

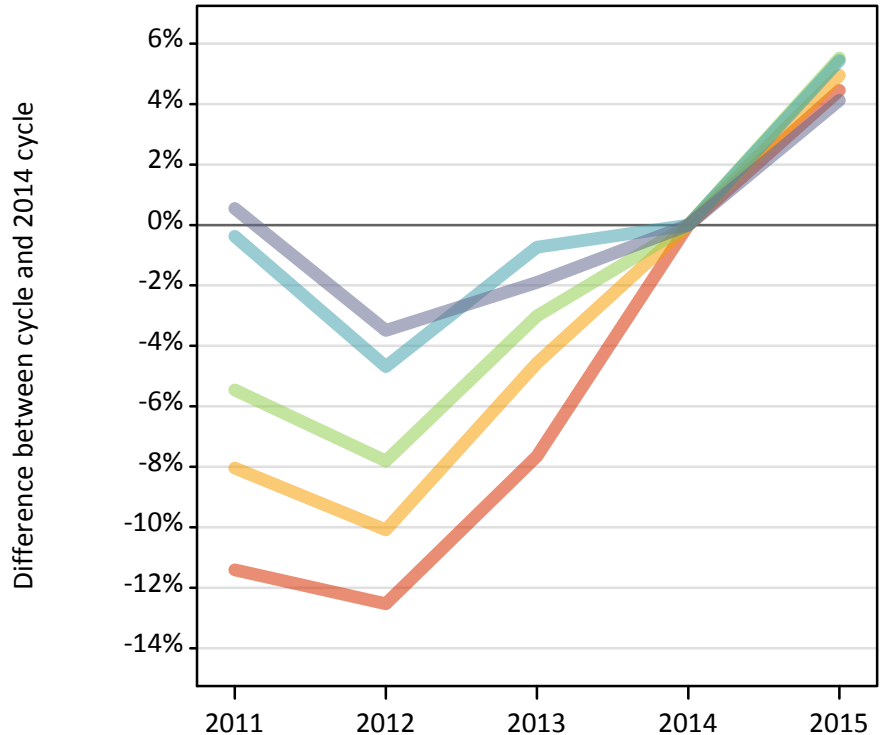
Daily Clearing Analysis: POLAR3

Analysis at 00:05 on Friday 21 August 2015 (8 days after A level results day)

P.1 Placed 18 year old applicants from England by POLAR3 quintile: 8 days after A level results day

Placed 18 year old applicants: change relative to 2014 cycle totals

- Quintile 1
- Quintile 2
- Quintile 3
- Quintile 4
- Quintile 5



P.2 Placed 18 year old applicants from England by POLAR3 quintile: 8 days after A level results day

Applicant Status	POLAR3	2011	2012	2013	2014	2015
Placed	Quintile 1	18,410	18,170	19,190	20,780	21,700
	Quintile 2	26,900	26,300	27,910	29,250	30,690
	Quintile 3	35,040	34,170	35,950	37,070	39,110
	Quintile 4	43,220	41,350	43,070	43,390	45,740
	Quintile 5	58,330	55,990	56,910	58,010	60,410

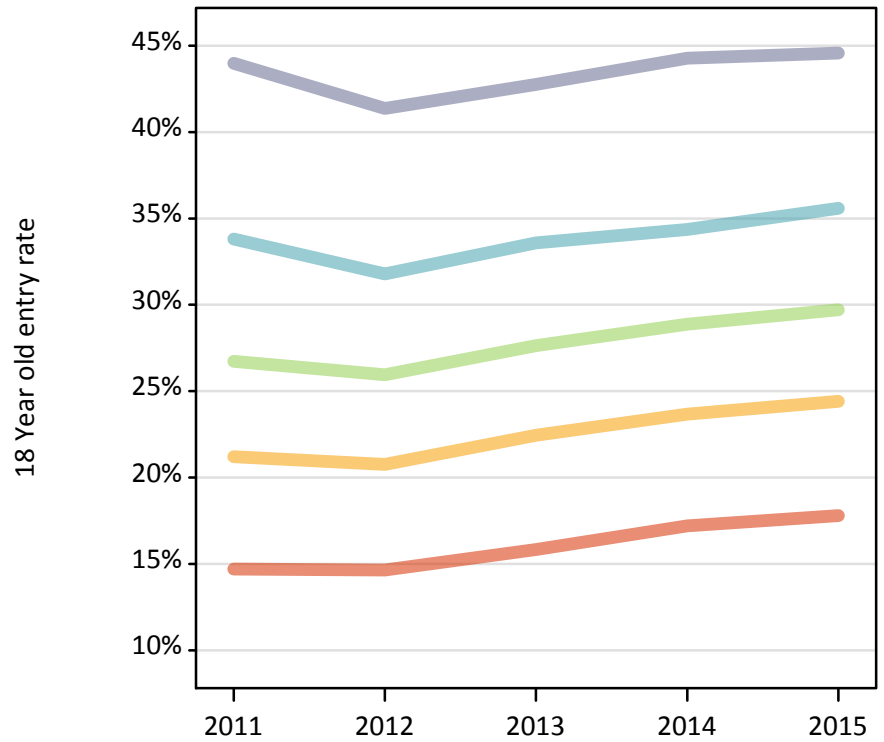
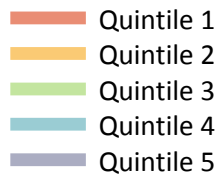
P.3 Placed 18 year old applicants from England by POLAR3 quintile: 8 days after A level results day

Placed 18 year old applicants: change relative to 2014 cycle totals

Applicant Status	POLAR3	2011	2012	2013	2014	2015
Placed	Quintile 1	-11%	-13%	-8%	0%	4%
	Quintile 2	-8%	-10%	-5%	0%	5%
	Quintile 3	-5%	-8%	-3%	0%	6%
	Quintile 4	-0%	-5%	-1%	0%	5%
	Quintile 5	1%	-3%	-2%	0%	4%

P.4 Placed 18 year old applicants from England by POLAR3 quintile: 8 days after A level results day

Placed 18 year old applicants: entry rate



P.5 Placed 18 year old applicants from England by POLAR3 quintile: 8 days after A level results day

Placed 18 year old applicants: entry rate

Applicant Status	POLAR3	2011	2012	2013	2014	2015
Placed	Quintile 1	14.7%	14.7%	15.8%	17.2%	17.8%
	Quintile 2	21.2%	20.8%	22.4%	23.7%	24.4%
	Quintile 3	26.7%	25.9%	27.6%	28.9%	29.7%
	Quintile 4	33.8%	31.8%	33.6%	34.4%	35.6%
	Quintile 5	44.0%	41.4%	42.8%	44.3%	44.6%

P.6 Placed 18 year old applicants from England by POLAR3 quintile: 8 days after A level results day

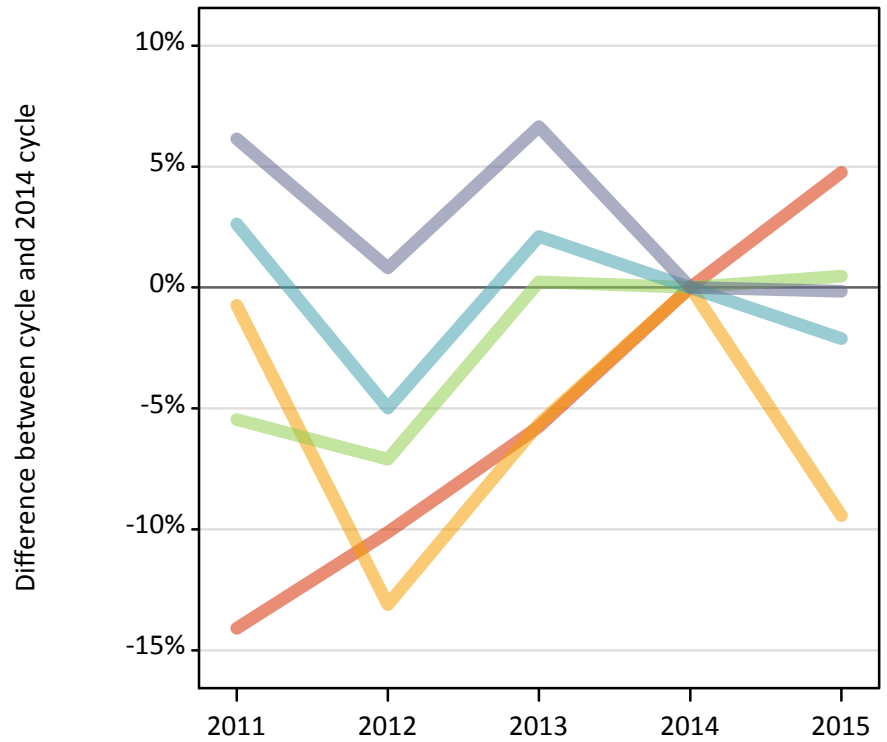
Placed 18 year old applicants: entry rate (indexed to 100 = Quintile 1)

Applicant Status	POLAR3	2011	2012	2013	2014	2015
Placed	Quintile 1	100	100	100	100	100
	Quintile 2	144	142	142	138	137
	Quintile 3	182	177	175	168	167
	Quintile 4	230	217	212	200	200
	Quintile 5	299	282	270	257	250

P.7 Placed 18 year old applicants from Northern Ireland by POLAR3 quintile: 8 days after A level results day

Placed 18 year old applicants: change relative to 2014 cycle totals

- Quintile 1
- Quintile 2
- Quintile 3
- Quintile 4
- Quintile 5



P.8 Placed 18 year old applicants from Northern Ireland by POLAR3 quintile: 8 days after A level results day

Applicant Status	POLAR3	2011	2012	2013	2014	2015
Placed	Quintile 1	430	450	480	500	530
	Quintile 2	810	710	770	820	740
	Quintile 3	1,210	1,190	1,280	1,280	1,290
	Quintile 4	2,580	2,380	2,560	2,510	2,460
	Quintile 5	3,420	3,250	3,430	3,220	3,220

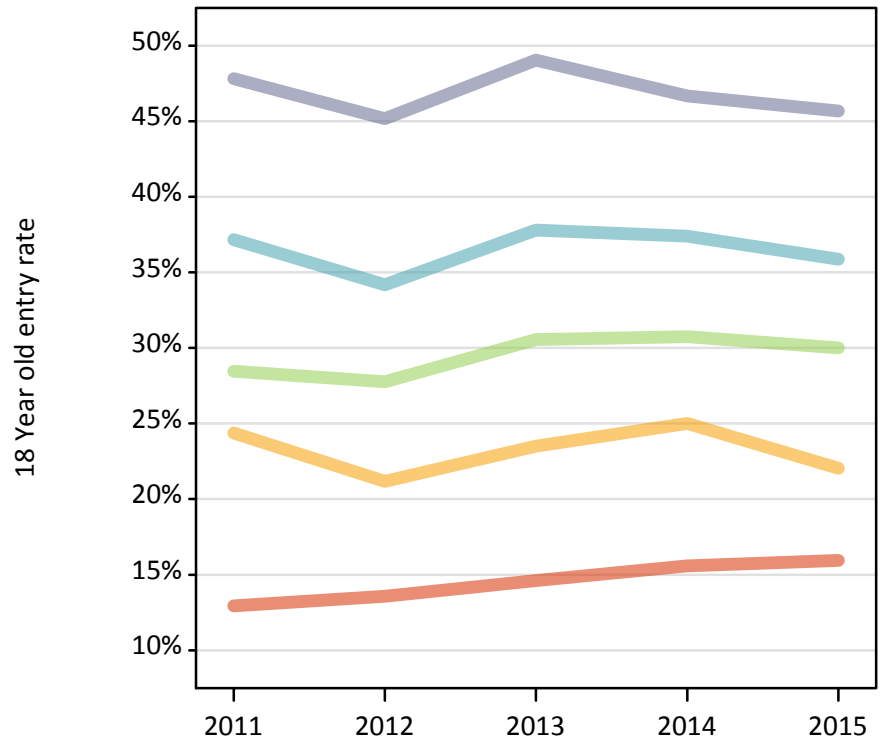
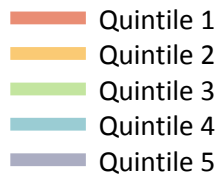
P.9 Placed 18 year old applicants from Northern Ireland by POLAR3 quintile: 8 days after A level results day

Placed 18 year old applicants: change relative to 2014 cycle totals

Applicant Status	POLAR3	2011	2012	2013	2014	2015
Placed	Quintile 1	-14%	-10%	-6%	0%	5%
	Quintile 2	-1%	-13%	-6%	0%	-9%
	Quintile 3	-5%	-7%	0%	0%	0%
	Quintile 4	3%	-5%	2%	0%	-2%
	Quintile 5	6%	1%	7%	0%	-0%

P.10 Placed 18 year old applicants from Northern Ireland by POLAR3 quintile: 8 days after A level results day

Placed 18 year old applicants: entry rate



P.11 Placed 18 year old applicants from Northern Ireland by POLAR3 quintile: 8 days after A level results day

Placed 18 year old applicants: entry rate

Applicant Status	POLAR3	2011	2012	2013	2014	2015
Placed	Quintile 1	12.9%	13.6%	14.6%	15.6%	15.9%
	Quintile 2	24.4%	21.2%	23.5%	25.0%	22.1%
	Quintile 3	28.5%	27.8%	30.5%	30.7%	30.0%
	Quintile 4	37.2%	34.2%	37.8%	37.4%	35.9%
	Quintile 5	47.8%	45.2%	49.0%	46.7%	45.7%

P.12 Placed 18 year old applicants from Northern Ireland by POLAR3 quintile: 8 days after A level results day

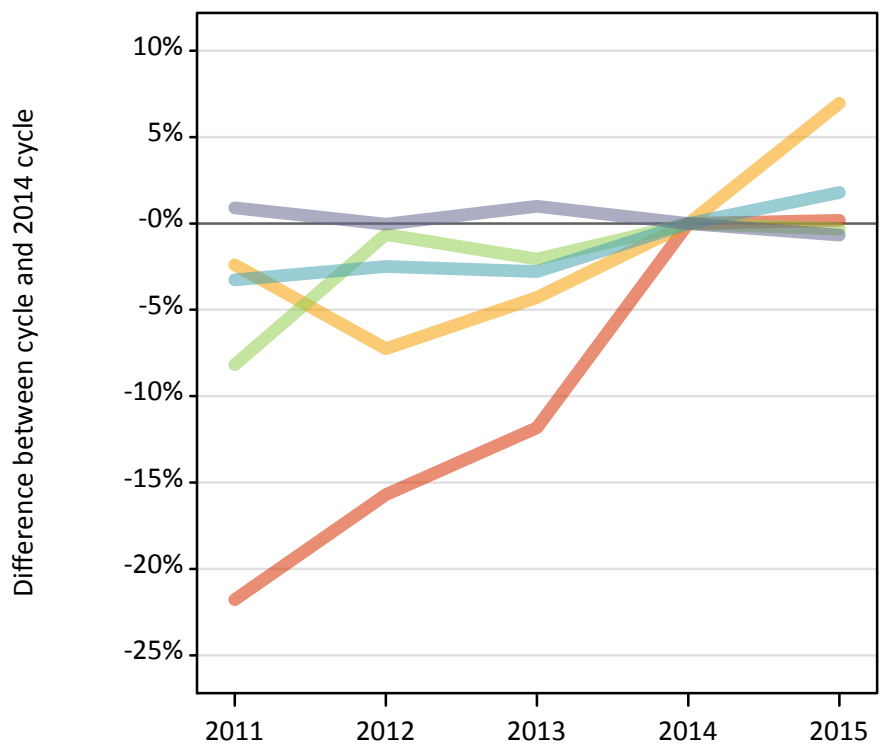
Placed 18 year old applicants: entry rate (indexed to 100 = Quintile 1)

Applicant Status	POLAR3	2011	2012	2013	2014	2015
Placed	Quintile 1	100	100	100	100	100
	Quintile 2	188	156	161	160	138
	Quintile 3	220	205	209	197	188
	Quintile 4	287	252	259	240	225
	Quintile 5	370	333	336	299	287

P.13 Placed 18 year old applicants from Scotland by POLAR3 quintile: 8 days after A level results day

Placed 18 year old applicants: change relative to 2014 cycle totals

- Quintile 1
- Quintile 2
- Quintile 3
- Quintile 4
- Quintile 5



P.14 Placed 18 year old applicants from Scotland by POLAR3 quintile: 8 days after A level results day

Applicant Status	POLAR3	2011	2012	2013	2014	2015
Placed	Quintile 1	460	500	520	590	590
	Quintile 2	1,350	1,280	1,320	1,380	1,470
	Quintile 3	2,010	2,170	2,140	2,190	2,180
	Quintile 4	3,260	3,290	3,280	3,370	3,430
	Quintile 5	6,790	6,730	6,800	6,730	6,690

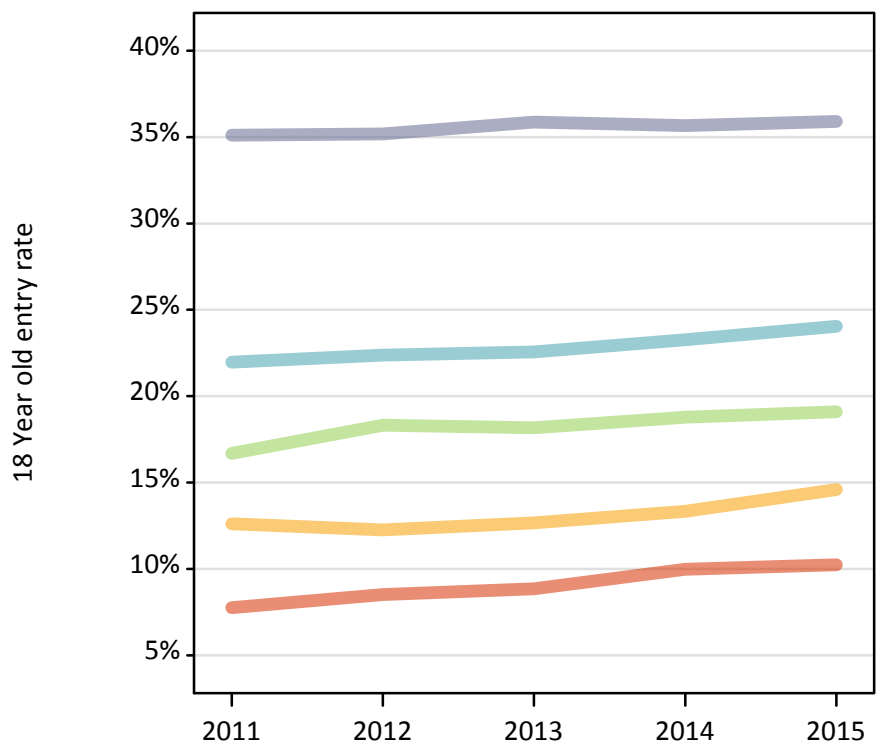
P.15 Placed 18 year old applicants from Scotland by POLAR3 quintile: 8 days after A level results day

Placed 18 year old applicants: change relative to 2014 cycle totals

Applicant Status	POLAR3	2011	2012	2013	2014	2015
Placed	Quintile 1	-22%	-16%	-12%	0%	0%
	Quintile 2	-2%	-7%	-4%	0%	7%
	Quintile 3	-8%	-1%	-2%	0%	-0%
	Quintile 4	-3%	-2%	-3%	0%	2%
	Quintile 5	1%	-0%	1%	0%	-1%

P.16 Placed 18 year old applicants from Scotland by POLAR3 quintile: 8 days after A level results day

Placed 18 year old applicants: entry rate



P.17 Placed 18 year old applicants from Scotland by POLAR3 quintile: 8 days after A level results day

Placed 18 year old applicants: entry rate

Applicant Status	POLAR3	2011	2012	2013	2014	2015
Placed	Quintile 1	7.8%	8.5%	8.8%	10.0%	10.2%
	Quintile 2	12.6%	12.3%	12.7%	13.3%	14.6%
	Quintile 3	16.7%	18.3%	18.2%	18.8%	19.1%
	Quintile 4	22.0%	22.4%	22.6%	23.3%	24.0%
	Quintile 5	35.1%	35.2%	35.9%	35.7%	35.9%

P.18 Placed 18 year old applicants from Scotland by POLAR3 quintile: 8 days after A level results day

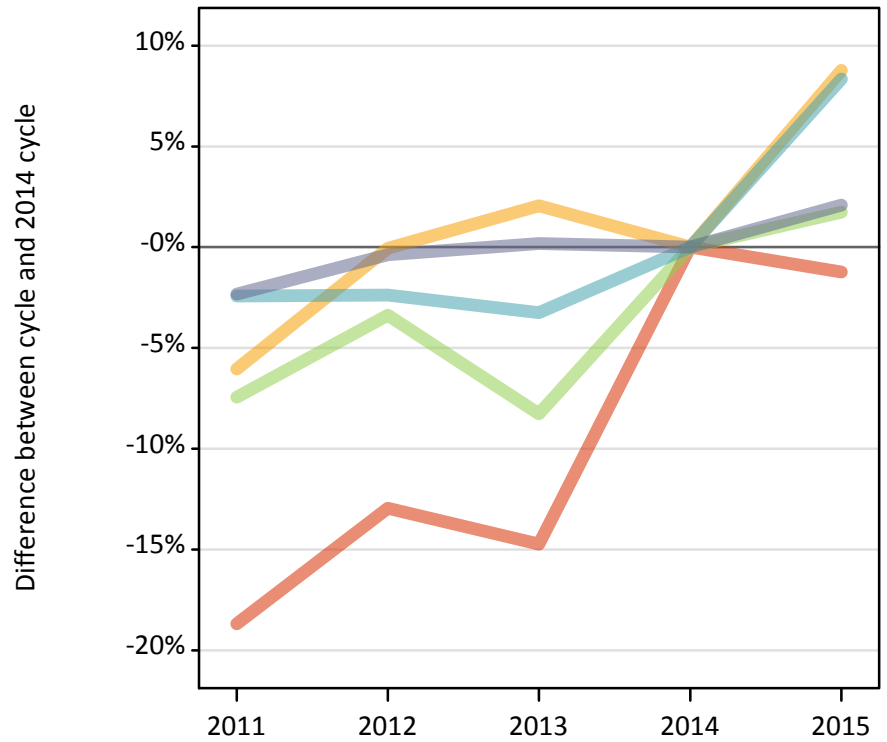
Placed 18 year old applicants: entry rate (indexed to 100 = Quintile 1)

Applicant Status	POLAR3	2011	2012	2013	2014	2015
Placed	Quintile 1	100	100	100	100	100
	Quintile 2	163	144	143	134	143
	Quintile 3	215	215	205	188	186
	Quintile 4	283	263	255	233	235
	Quintile 5	453	413	405	357	350

P.19 Placed 18 year old applicants from Wales by POLAR3 quintile: 8 days after A level results day

Placed 18 year old applicants: change relative to 2014 cycle totals

- Quintile 1
- Quintile 2
- Quintile 3
- Quintile 4
- Quintile 5



P.20 Placed 18 year old applicants from Wales by POLAR3 quintile: 8 days after A level results day

Applicant Status	POLAR3	2011	2012	2013	2014	2015
Placed	Quintile 1	1,190	1,280	1,250	1,470	1,450
	Quintile 2	1,820	1,940	1,980	1,940	2,110
	Quintile 3	1,590	1,660	1,580	1,720	1,750
	Quintile 4	2,140	2,140	2,120	2,190	2,370
	Quintile 5	2,560	2,620	2,630	2,630	2,680

P.21 Placed 18 year old applicants from Wales by POLAR3 quintile: 8 days after A level results day

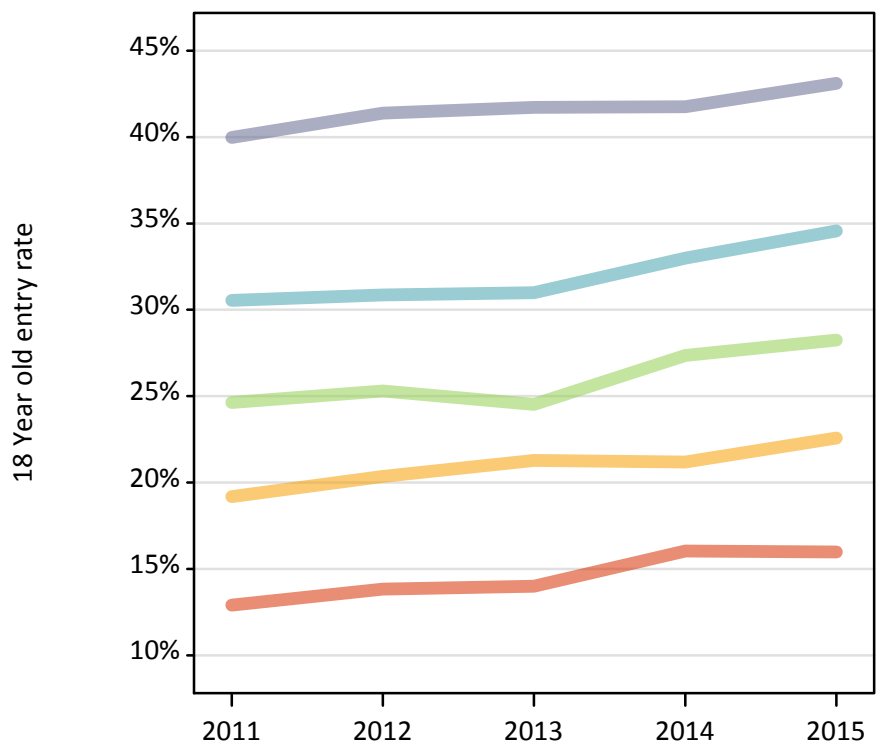
Placed 18 year old applicants: change relative to 2014 cycle totals

Applicant Status	POLAR3	2011	2012	2013	2014	2015
Placed	Quintile 1	-19%	-13%	-15%	0%	-1%
	Quintile 2	-6%	-0%	2%	0%	9%
	Quintile 3	-7%	-3%	-8%	0%	2%
	Quintile 4	-2%	-2%	-3%	0%	8%
	Quintile 5	-2%	-0%	0%	0%	2%

P.22 Placed 18 year old applicants from Wales by POLAR3 quintile: 8 days after A level results day

Placed 18 year old applicants: entry rate

- Quintile 1
- Quintile 2
- Quintile 3
- Quintile 4
- Quintile 5



P.23 Placed 18 year old applicants from Wales by POLAR3 quintile: 8 days after A level results day

Placed 18 year old applicants: entry rate

Applicant Status	POLAR3	2011	2012	2013	2014	2015
Placed	Quintile 1	12.9%	13.8%	14.0%	16.0%	16.0%
	Quintile 2	19.2%	20.4%	21.3%	21.2%	22.6%
	Quintile 3	24.6%	25.3%	24.5%	27.4%	28.3%
	Quintile 4	30.5%	30.9%	31.0%	33.0%	34.6%
	Quintile 5	40.0%	41.4%	41.7%	41.8%	43.1%

P.24 Placed 18 year old applicants from Wales by POLAR3 quintile: 8 days after A level results day

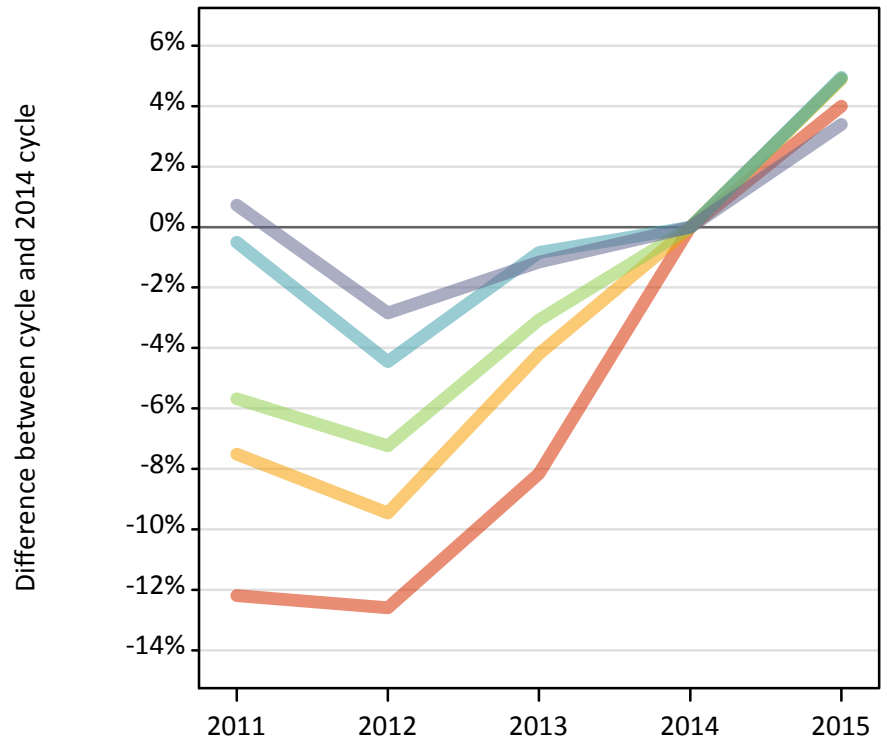
Placed 18 year old applicants: entry rate (indexed to 100 = Quintile 1)

Applicant Status	POLAR3	2011	2012	2013	2014	2015
Placed	Quintile 1	100	100	100	100	100
	Quintile 2	149	147	152	132	141
	Quintile 3	191	183	175	171	177
	Quintile 4	237	223	221	206	216
	Quintile 5	310	299	298	260	270

P.25 Placed 18 year old applicants from the UK by POLAR3 quintile: 8 days after A level results day

Placed 18 year old applicants: change relative to 2014 cycle totals

- Quintile 1
- Quintile 2
- Quintile 3
- Quintile 4
- Quintile 5



P.26 Placed 18 year old applicants from the UK by POLAR3 quintile: 8 days after A level results day

Applicant Status	POLAR3	2011	2012	2013	2014	2015
Placed	Quintile 1	20,500	20,400	21,440	23,340	24,270
	Quintile 2	30,870	30,220	31,980	33,380	35,020
	Quintile 3	39,850	39,200	40,950	42,250	44,330
	Quintile 4	51,200	49,160	51,020	51,450	54,000
	Quintile 5	71,100	68,580	69,770	70,590	72,990

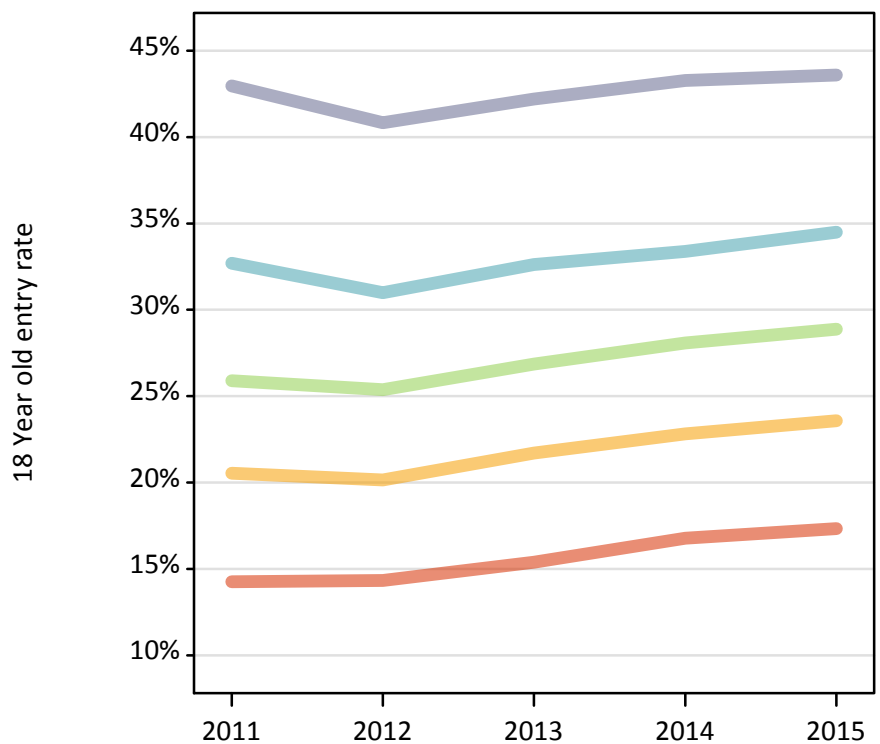
P.27 Placed 18 year old applicants from the UK by POLAR3 quintile: 8 days after A level results day

Placed 18 year old applicants: change relative to 2014 cycle totals

Applicant Status	POLAR3	2011	2012	2013	2014	2015
Placed	Quintile 1	-12%	-13%	-8%	0%	4%
	Quintile 2	-8%	-9%	-4%	0%	5%
	Quintile 3	-6%	-7%	-3%	0%	5%
	Quintile 4	-1%	-4%	-1%	0%	5%
	Quintile 5	1%	-3%	-1%	0%	3%

P.28 Placed 18 year old applicants from the UK by POLAR3 quintile: 8 days after A level results day

Placed 18 year old applicants: entry rate



P.29 Placed 18 year old applicants from the UK by POLAR3 quintile: 8 days after A level results day

Placed 18 year old applicants: entry rate

Applicant Status	POLAR3	2011	2012	2013	2014	2015
Placed	Quintile 1	14.3%	14.3%	15.4%	16.8%	17.3%
	Quintile 2	20.5%	20.2%	21.7%	22.8%	23.6%
	Quintile 3	25.9%	25.4%	26.9%	28.1%	28.9%
	Quintile 4	32.7%	31.0%	32.6%	33.4%	34.5%
	Quintile 5	43.0%	40.8%	42.2%	43.3%	43.6%

P.30 Placed 18 year old applicants from the UK by POLAR3 quintile: 8 days after A level results day

Placed 18 year old applicants: entry rate (indexed to 100 = Quintile 1)

Applicant Status	POLAR3	2011	2012	2013	2014	2015
Placed	Quintile 1	100	100	100	100	100
	Quintile 2	144	141	141	136	136
	Quintile 3	182	177	175	167	167
	Quintile 4	229	216	212	199	199
	Quintile 5	301	285	274	258	252