

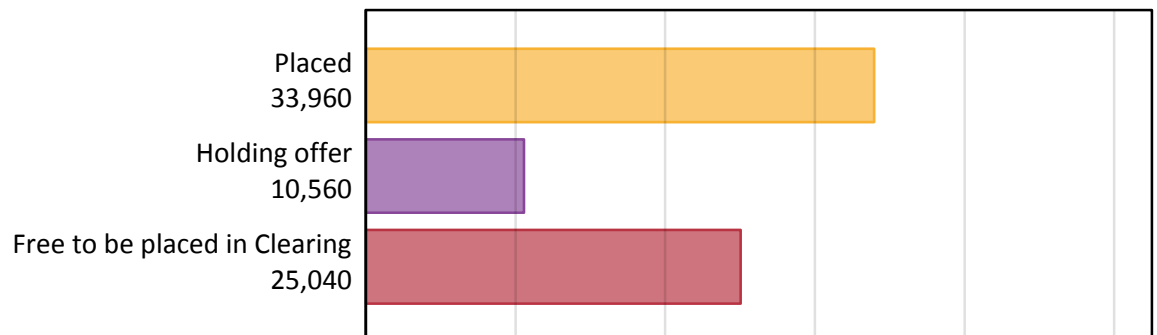
# Daily Clearing Analysis: Overview

Analysis at 00:05 on Monday 24 August 2015 (11 days after A level results day)

## A.1 Applicants by type and status from outside the EU, 2015 cycle

Applicant type	Status	2015
Main scheme	Placed (Clearing)	2,420
	Placed (Adjustment)	70
	Placed (Firm)	25,920
	Placed (Insurance)	3,350
	Placed (Other)	1,810
	Holding offer	10,560
	Free to be placed in Clearing	25,040
Direct to Clearing	Placed (Direct to Clearing)	380
	Other (Direct to Clearing)	820
All applicants	Placed	33,960

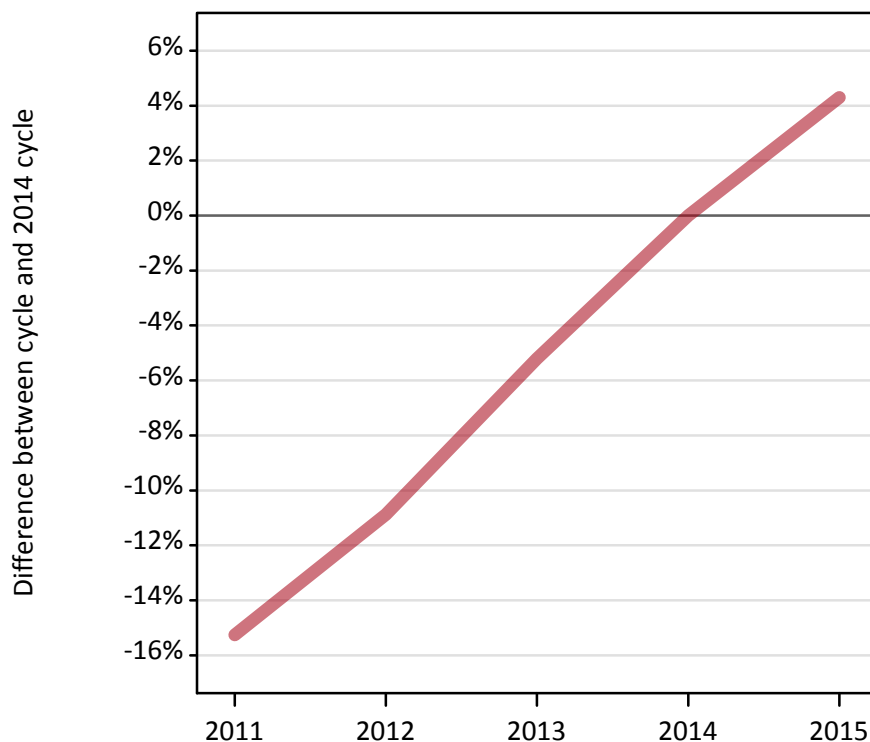
## A.2 Summary of applicants who are placed, holding offers or free to be placed in Clearing ( outside the EU )



### A.3 All placed applicants from outside the EU: 11 days after A level results day

All placed applicants: difference between cycle and 2014 cycle

Placed



### A.4 All placed applicants from outside the EU: 11 days after A level results day

All placed applicants: applicants at 11 days after A level results day

Applicant type	Status	2011	2012	2013	2014	2015
All applicants	Placed	27,590	29,020	30,860	32,560	33,960

### A.5 All placed applicants from outside the EU: 11 days after A level results day

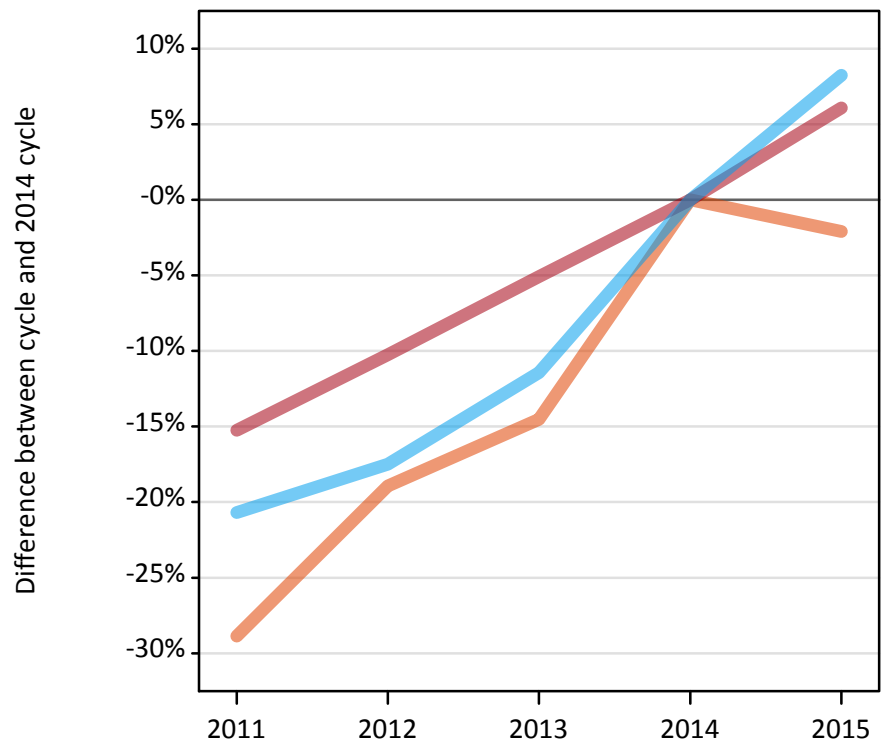
All placed applicants: difference between cycle and 2014 cycle

Applicant type	Status	2011	2012	2013	2014	2015
All applicants	Placed	-15%	-11%	-5%	0%	4%

### A.6 Placed main scheme applicants from outside the EU: 11 days after A level results day

Selected placed routes: difference between cycle and 2014 cycle

- Placed (Clearing)
- Placed (Firm)
- Placed (Insurance)



### A.7 Placed main scheme applicants from outside the EU: 11 days after A level results day

All Main scheme placed routes (excluding Adjustment): applicants at 11 days after A level results day

Applicant type	Status	2011	2012	2013	2014	2015
Main scheme	Placed (Clearing)	1,760	2,010	2,110	2,470	2,420
	Placed (Firm)	20,710	21,930	23,190	24,430	25,920
	Placed (Insurance)	2,460	2,560	2,740	3,100	3,350
	Placed (Other)	2,370	2,120	2,380	2,120	1,810

### A.8 Placed main scheme applicants from outside the EU: 11 days after A level results day

Selected placed routes: difference between cycle and 2014 cycle

Applicant type	Status	2011	2012	2013	2014	2015
Main scheme	Placed (Clearing)	-29%	-19%	-15%	0%	-2%
	Placed (Firm)	-15%	-10%	-5%	0%	6%
	Placed (Insurance)	-21%	-17%	-11%	0%	8%

### A.9 Main scheme applicants placed through adjustment: 11 days after A level results day

Placed through adjustment: difference between cycle and 2014 cycle

Placed (Adjustment)



### A.10 Main scheme applicants placed through adjustment: 11 days after A level results day

Placed through adjustment: applicants at 11 days after A level results day

Applicant type	Status	2011	2012	2013	2014	2015
Main scheme	Placed (Adjustment)	40	70	60	90	70

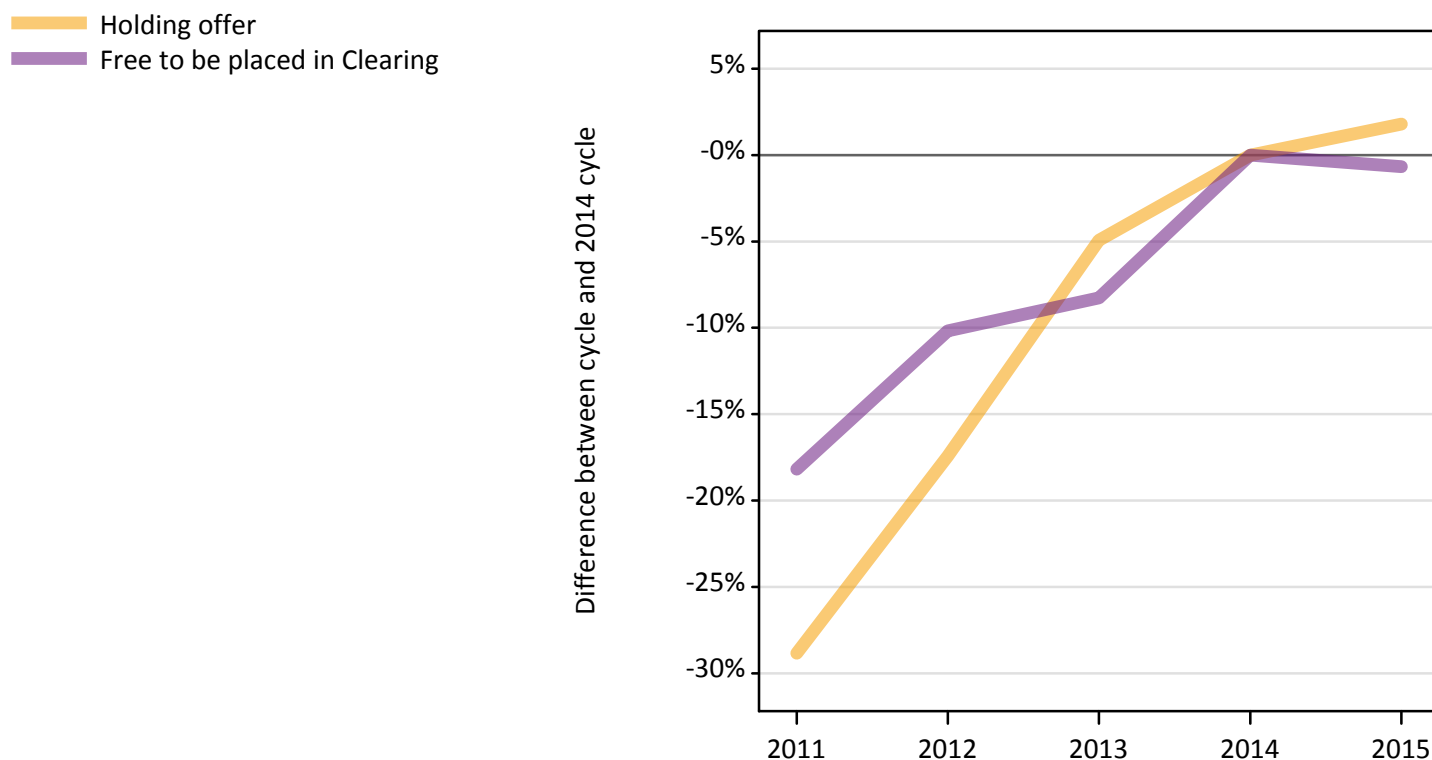
### A.11 Main scheme applicants placed through adjustment: 11 days after A level results day

Placed through adjustment: difference between cycle and 2014 cycle

Applicant type	Status	2011	2012	2013	2014	2015
Main scheme	Placed (Adjustment)	-55%	-24%	-34%	0%	-19%

### A.12 Main scheme applicants not currently placed from outside the EU: 11 days after A level results day

Applicants in unplaced states: difference between cycle and 2014 cycle



### A.13 Main scheme applicants not currently placed from outside the EU: 11 days after A level results day

Applicants in unplaced states: applicants at 11 days after A level results day

Applicant type	Status	2011	2012	2013	2014	2015
Main scheme	Holding offer	7,380	8,560	9,860	10,370	10,560
	Free to be placed in Clearing	20,630	22,650	23,130	25,210	25,040

### A.14 Main scheme applicants not currently placed from outside the EU: 11 days after A level results day

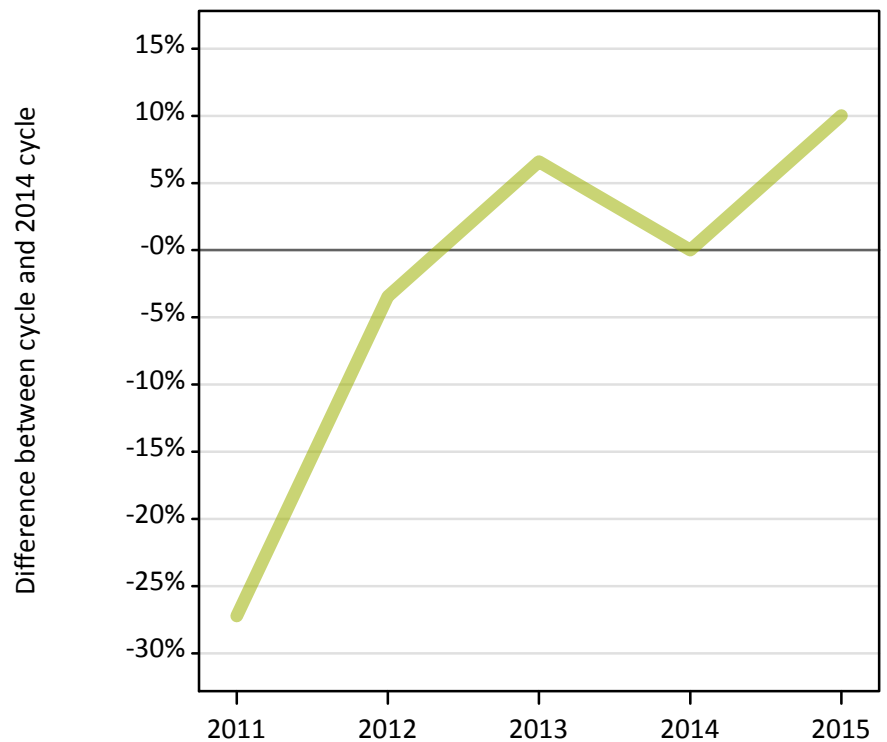
Applicants in unplaced states: difference between cycle and 2014 cycle

Applicant type	Status	2011	2012	2013	2014	2015
Main scheme	Holding offer	-29%	-17%	-5%	0%	2%
	Free to be placed in Clearing	-18%	-10%	-8%	0%	-1%

### A.15 Direct to Clearing applicants from outside the EU: 11 days after A level results day

Placed (Direct to Clearing): difference between cycle and 2014 cycle

Placed (Direct to Clearing)



### A.16 Direct to Clearing applicants from outside the EU: 11 days after A level results day

Direct to Clearing 11 days after A level results day

Applicant type	Status	2011	2012	2013	2014	2015
Direct to Clearing	Placed (Direct to Clearing)	250	340	370	350	380
	Other (Direct to Clearing)	770	750	860	710	820

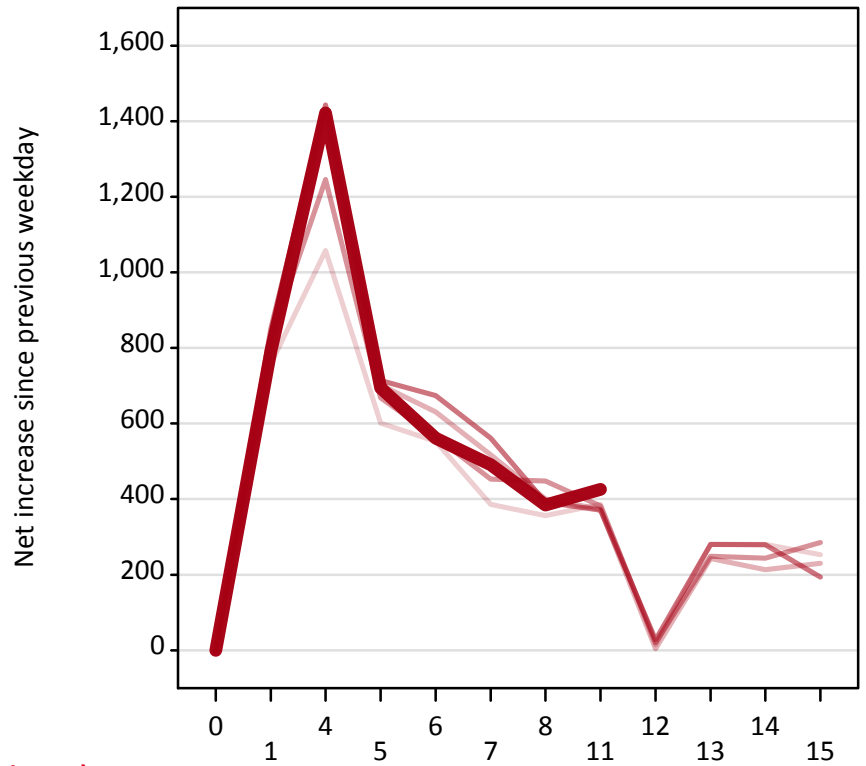
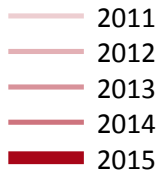
### A.17 Direct to Clearing applicants from outside the EU: 11 days after A level results day

Placed (Direct to Clearing): difference between cycle and 2014 cycle

Applicant type	Status	2011	2012	2013	2014	2015
Direct to Clearing	Placed (Direct to Clearing)	-27%	-3%	7%	0%	10%

### A.18 All Placed: Daily net change (from outside the EU)

Net increase since previous weekday (2015 cycle up to 11 days after A level results day)



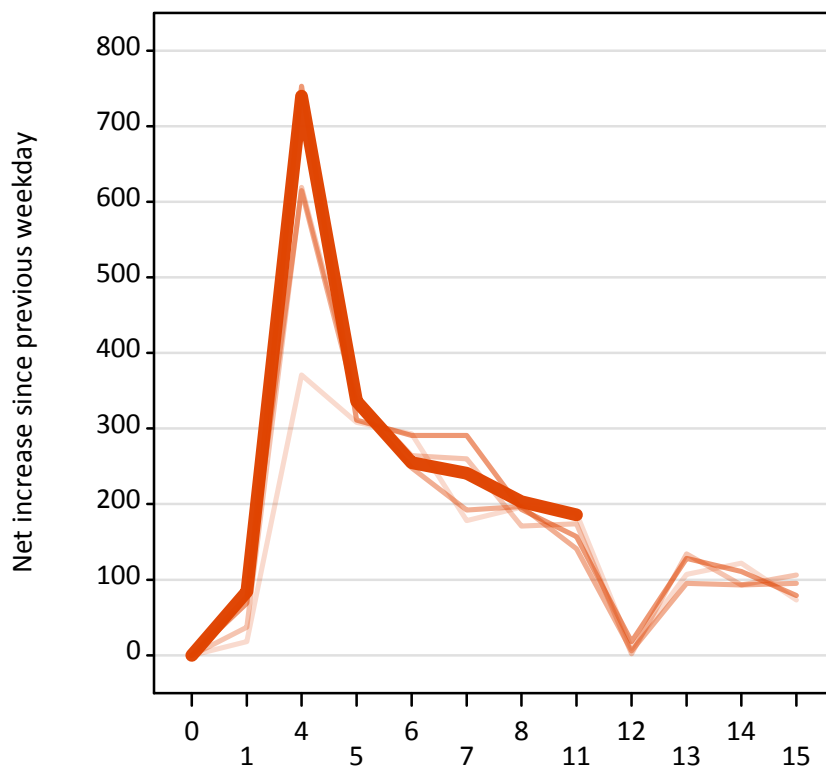
### A.19 All Placed: Daily net change (from outside the EU)

Net increase since previous weekday (2015 cycle up to 11 days after A level results day)

Applicant status, days since A level results day		2011	2012	2013	2014	2015
All Placed	0	0	0	0	0	0
	1	760	790	820	850	790
	4	1,060	1,430	1,250	1,440	1,420
	5	600	700	670	710	690
	6	550	630	570	670	560
	7	390	520	450	560	490
	8	360	400	450	390	380
	11	390	370	380	370	430
	12	10	0	20	30	
	13	280	240	250	280	
	14	280	210	240	280	
	15	250	230	290	190	

### A.20 Placed through Clearing only: Daily net change (from outside the EU)

Net increase since previous weekday (2015 cycle up to 11 days after A level results day)



### A.21 Placed through Clearing only: Daily net change (from outside the EU)

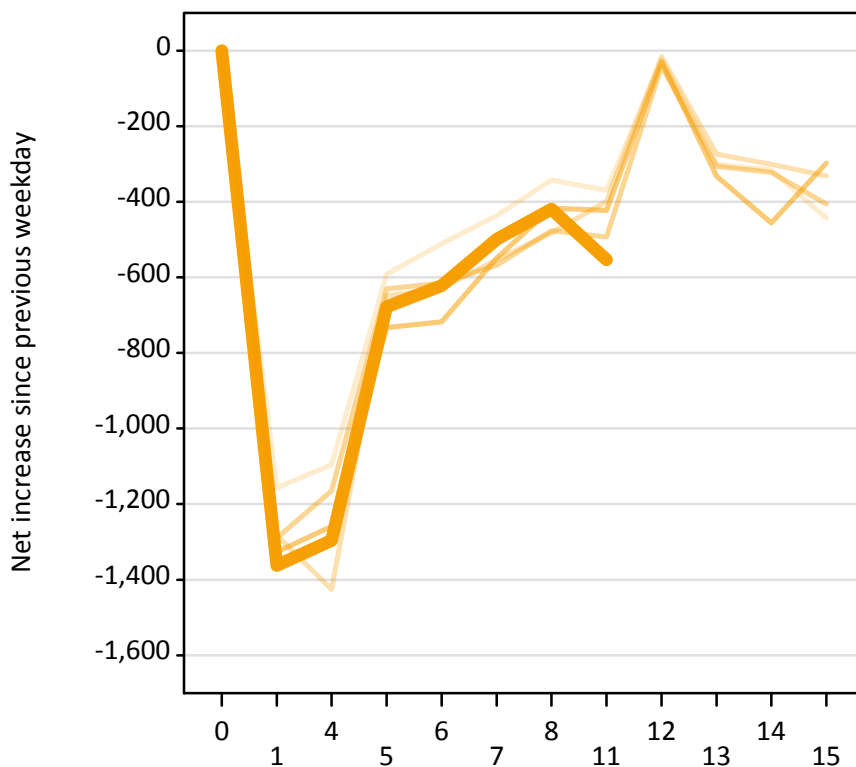
Net increase since previous weekday (2015 cycle up to 11 days after A level results day)

Applicant status, days since A level results day		2011	2012	2013	2014	2015
Placed through Clearing only	0	0	0	0	0	0
	1	20	40	80	70	80
	4	370	620	620	750	740
	5	310	340	330	310	340
	6	290	260	250	290	260
	7	180	260	190	290	240
	8	200	170	200	190	200
	11	190	170	140	160	190
	12	10	0	10	20	0
	13	110	130	100	130	0
	14	120	90	90	110	0
	15	70	110	100	80	0



### A.22 Holding Offer: Daily net change (from outside the EU)

Net increase since previous weekday (2015 cycle up to 11 days after A level results day)



### A.23 Holding Offer: Daily net change (from outside the EU)

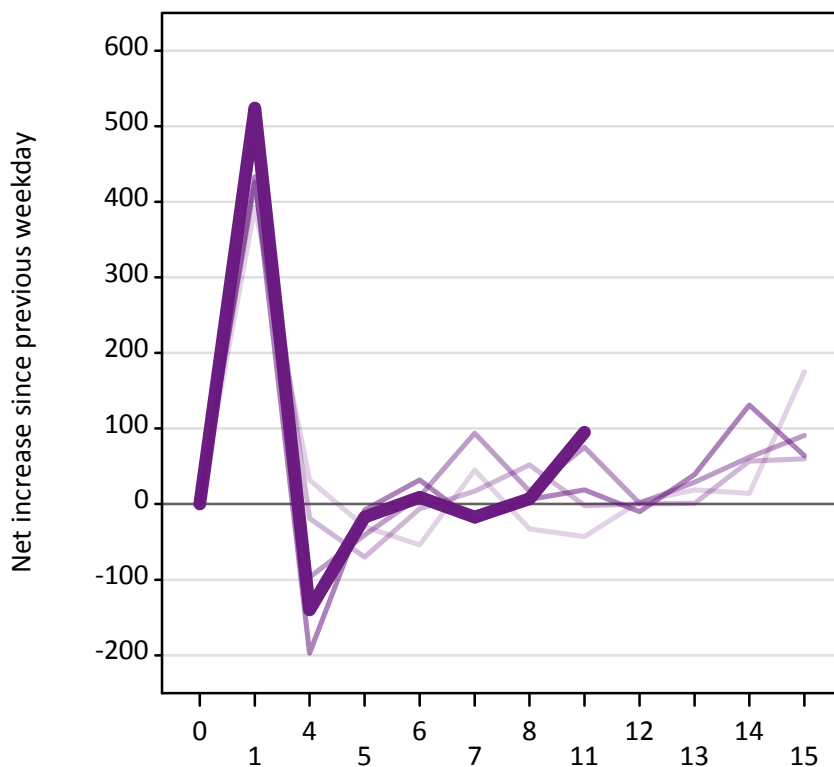
Net increase since previous weekday (2015 cycle up to 11 days after A level results day)

Applicant status, days since A level results day		2011	2012	2013	2014	2015
Holding Offer	0	0	0	0	0	0
	1	-1,160	-1,280	-1,290	-1,330	-1,360
	4	-1,100	-1,430	-1,170	-1,260	-1,300
	5	-590	-650	-630	-730	-680
	6	-510	-630	-620	-720	-620
	7	-440	-550	-570	-550	-500
	8	-340	-480	-480	-420	-420
	11	-370	-400	-490	-420	-550
	12	-20	-20	-40	-30	
	13	-300	-270	-310	-330	
	14	-320	-300	-320	-460	
	15	-440	-330	-410	-300	

### A.24 Free to be placed in Clearing: Daily net change (from outside the EU)

Net increase since previous weekday (2015 cycle up to 11 days after A level results day)

- 2011
- 2012
- 2013
- 2014
- 2015



### A.25 Free to be placed in Clearing: Daily net change (from outside the EU)

Net increase since previous weekday (2015 cycle up to 11 days after A level results day)

Applicant status, days since A level results day		2011	2012	2013	2014	2015
Free to be placed in Clearing	0	0	0	0	0	0
	1	390	490	430	430	520
	4	30	-20	-100	-200	-140
	5	-30	-70	-40	-10	-20
	6	-50	-10	10	30	10
	7	50	20	90	-20	-20
	8	-30	50	20	10	10
	11	-40	0	80	20	100
	12	0	0	0	-10	
	13	20	0	30	40	
	14	10	60	60	130	
	15	180	60	90	60	