

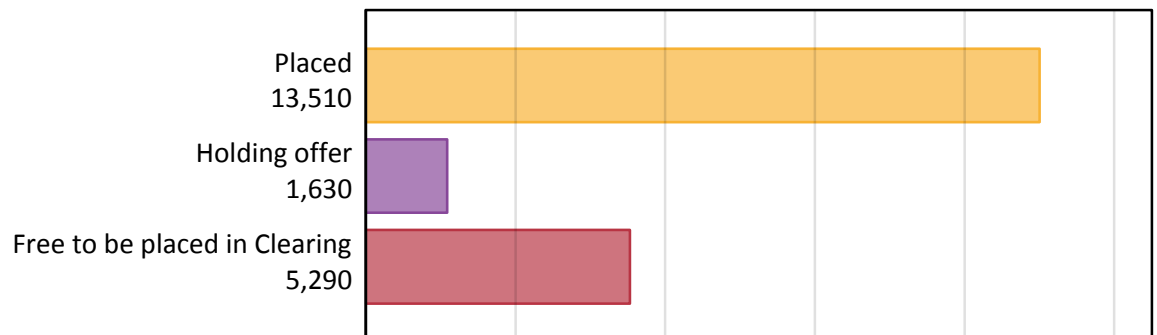
# Daily Clearing Analysis: Overview

Analysis at 00:05 on Monday 24 August 2015 (11 days after A level results day - No Scot.X1)

## AX.1 Applicants by type and status from Northern Ireland, 2015 cycle

Applicant type	Status	2015
Main scheme	Placed (Clearing)	640
	Placed (Adjustment)	40
	Placed (Firm)	11,430
	Placed (Insurance)	1,230
	Placed (Other)	110
	Holding offer	1,630
	Free to be placed in Clearing	5,290
Direct to Clearing	Placed (Direct to Clearing)	60
	Other (Direct to Clearing)	70
All applicants	Placed	13,510

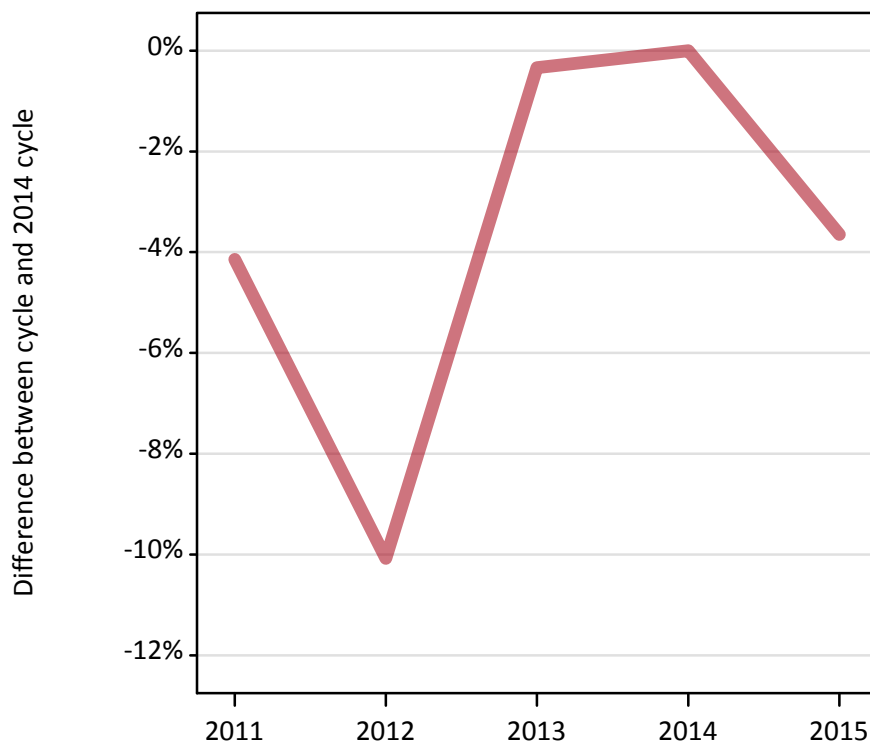
## AX.2 Summary of applicants who are placed, holding offers or free to be placed in Clearing ( Northern Ireland )



### AX.3 All placed applicants from Northern Ireland: 11 days after A level results day

All placed applicants: difference between cycle and 2014 cycle

Placed



### AX.4 All placed applicants from Northern Ireland: 11 days after A level results day

All placed applicants: applicants at 11 days after A level results day

Applicant type	Status	2011	2012	2013	2014	2015
All applicants	Placed	13,440	12,600	13,970	14,020	13,510

### AX.5 All placed applicants from Northern Ireland: 11 days after A level results day

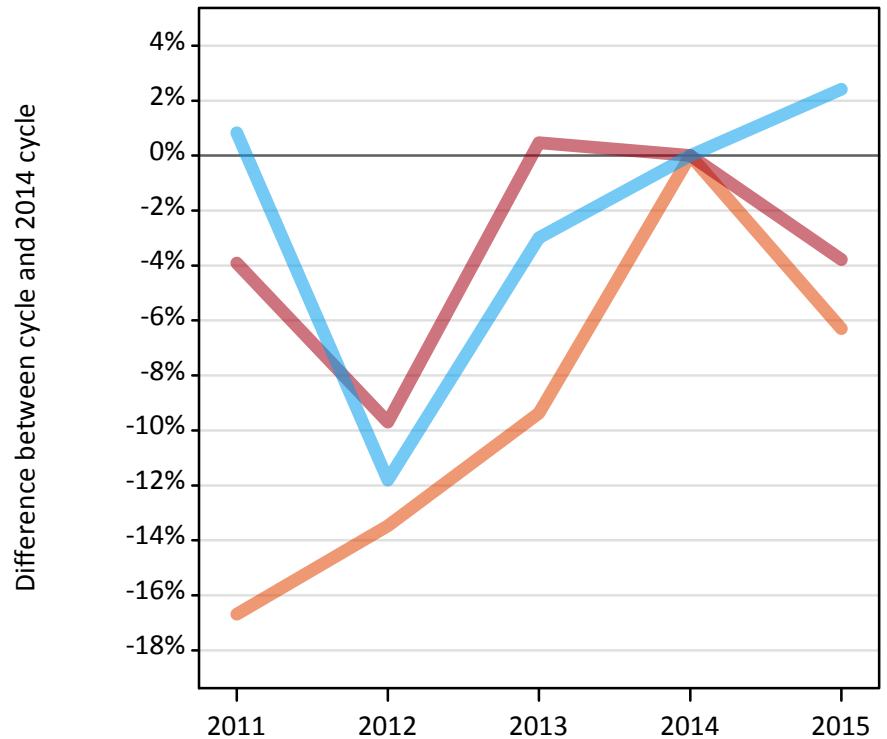
All placed applicants: difference between cycle and 2014 cycle

Applicant type	Status	2011	2012	2013	2014	2015
All applicants	Placed	-4%	-10%	-0%	0%	-4%

### AX.6 Placed main scheme applicants from Northern Ireland: 11 days after A level results day

Selected placed routes: difference between cycle and 2014 cycle

- Placed (Clearing)
- Placed (Firm)
- Placed (Insurance)



### AX.7 Placed main scheme applicants from Northern Ireland: 11 days after A level results day

All Main scheme placed routes (excluding Adjustment): applicants at 11 days after A level results day

Applicant type	Status	2011	2012	2013	2014	2015
Main scheme	Placed (Clearing)	570	590	620	680	640
	Placed (Firm)	11,420	10,730	11,940	11,880	11,430
	Placed (Insurance)	1,210	1,060	1,170	1,200	1,230
	Placed (Other)	180	150	150	150	110

### AX.8 Placed main scheme applicants from Northern Ireland: 11 days after A level results day

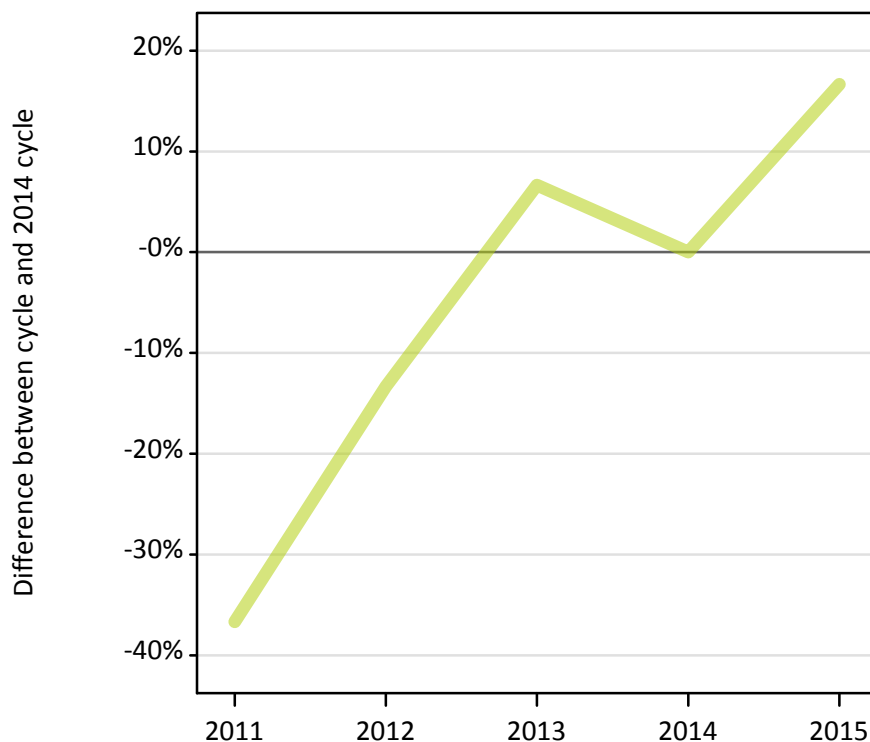
Selected placed routes: difference between cycle and 2014 cycle

Applicant type	Status	2011	2012	2013	2014	2015
Main scheme	Placed (Clearing)	-17%	-13%	-9%	0%	-6%
	Placed (Firm)	-4%	-10%	0%	0%	-4%
	Placed (Insurance)	1%	-12%	-3%	0%	2%

### AX.9 Main scheme applicants placed through adjustment: 11 days after A level results day

Placed through adjustment: difference between cycle and 2014 cycle

Placed (Adjustment)



### AX.10 Main scheme applicants placed through adjustment: 11 days after A level results day

Placed through adjustment: applicants at 11 days after A level results day

Applicant type	Status	2011	2012	2013	2014	2015
Main scheme	Placed (Adjustment)	20	30	30	30	40

### AX.11 Main scheme applicants placed through adjustment: 11 days after A level results day

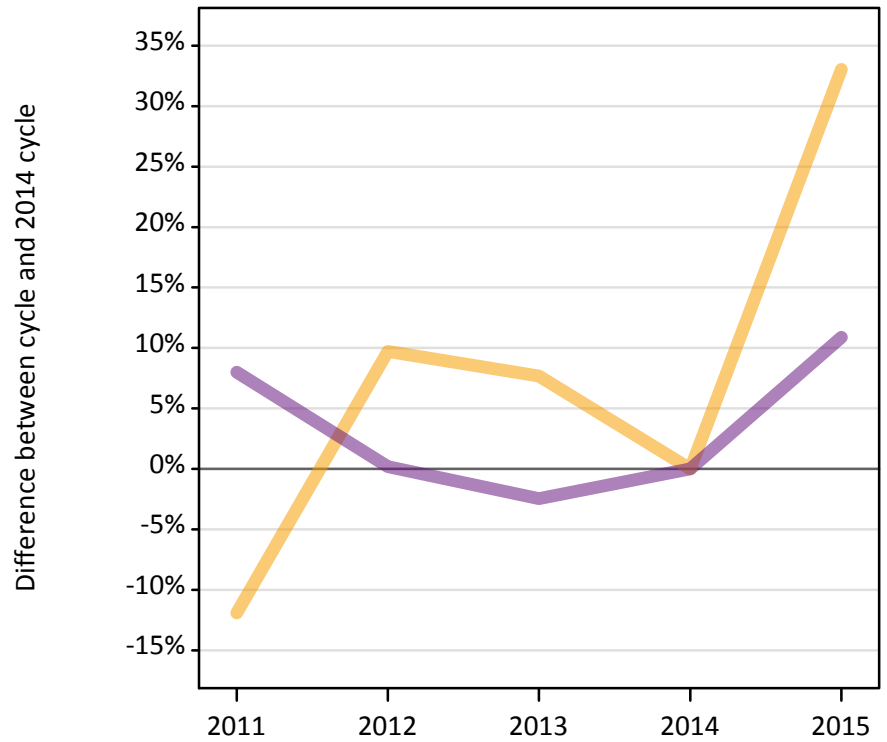
Placed through adjustment: difference between cycle and 2014 cycle

Applicant type	Status	2011	2012	2013	2014	2015
Main scheme	Placed (Adjustment)	-37%	-13%	7%	0%	17%

**AX.12 Main scheme applicants not currently placed from Northern Ireland: 11 days after A level results day**

Applicants in unplaced states: difference between cycle and 2014 cycle

— Holding offer  
— Free to be placed in Clearing



**AX.13 Main scheme applicants not currently placed from Northern Ireland: 11 days after A level results day**

Applicants in unplaced states: applicants at 11 days after A level results day

Applicant type	Status	2011	2012	2013	2014	2015
Main scheme	Holding offer	1,080	1,350	1,320	1,230	1,630
	Free to be placed in Clearing	5,160	4,780	4,660	4,770	5,290

**AX.14 Main scheme applicants not currently placed from Northern Ireland: 11 days after A level results day**

Applicants in unplaced states: difference between cycle and 2014 cycle

Applicant type	Status	2011	2012	2013	2014	2015
Main scheme	Holding offer	-12%	10%	8%	0%	33%
	Free to be placed in Clearing	8%	0%	-2%	0%	11%

**AX.15 Direct to Clearing applicants from Northern Ireland: 11 days after A level results day**

Placed (Direct to Clearing): difference between cycle and 2014 cycle

Placed (Direct to Clearing)

**AX.16 Direct to Clearing applicants from Northern Ireland: 11 days after A level results day**

Direct to Clearing 11 days after A level results day

Applicant type	Status	2011	2012	2013	2014	2015
Direct to Clearing	Placed (Direct to Clearing)	40	50	70	70	60
	Other (Direct to Clearing)	80	80	80	90	70

**AX.17 Direct to Clearing applicants from Northern Ireland: 11 days after A level results day**

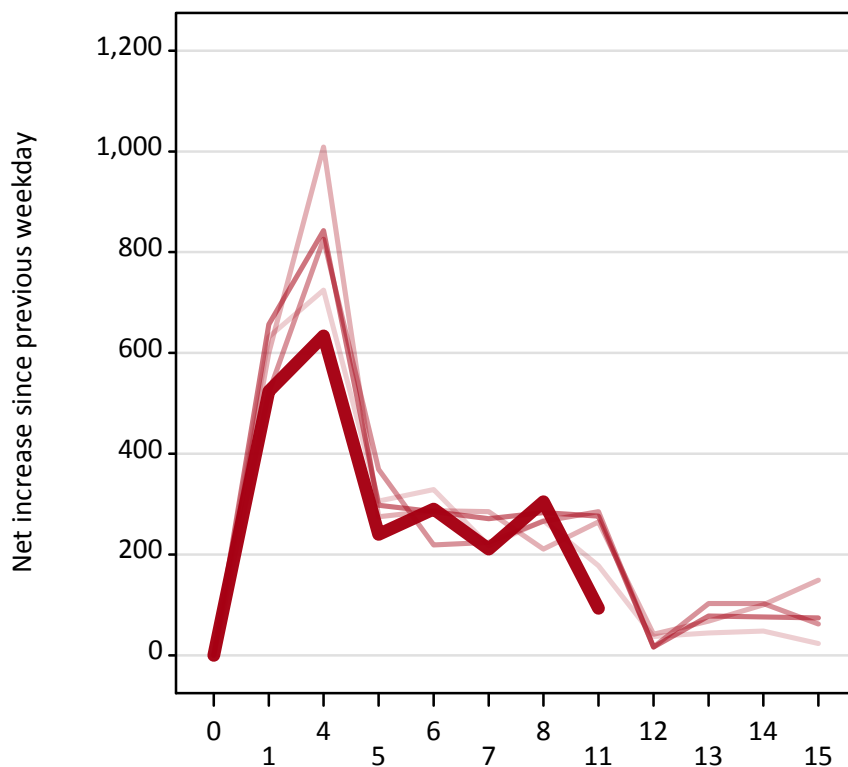
Placed (Direct to Clearing): difference between cycle and 2014 cycle

Applicant type	Status	2011	2012	2013	2014	2015
Direct to Clearing	Placed (Direct to Clearing)	-47%	-29%	-8%	0%	-22%

### AX.18 All Placed: Daily net change (from Northern Ireland)

Net increase since previous weekday (2015 cycle up to 11 days after A level results day)

- 2011
- 2012
- 2013
- 2014
- 2015



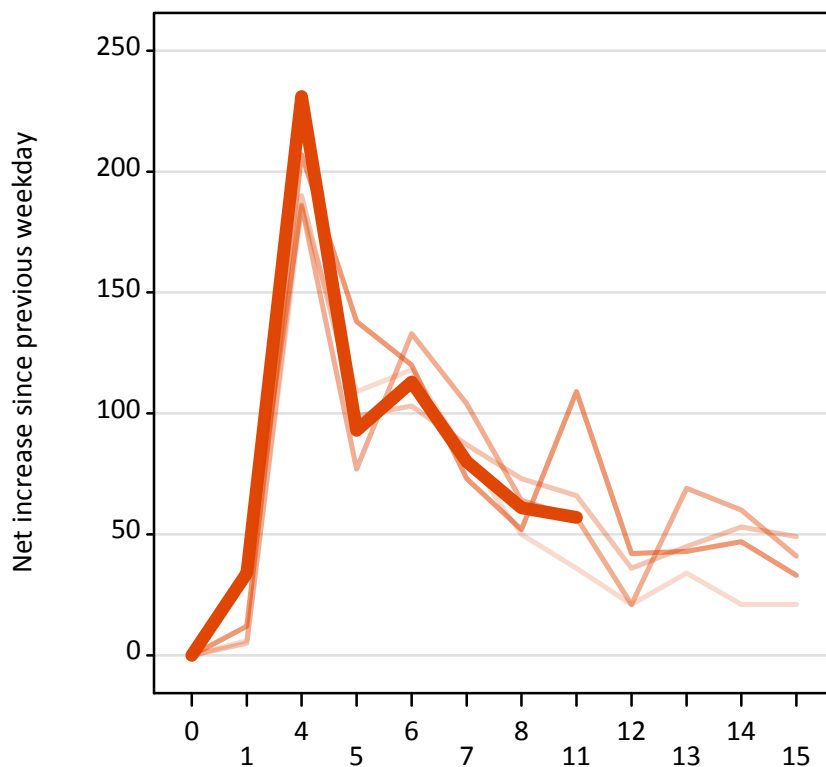
### AX.19 All Placed: Daily net change (from Northern Ireland)

Net increase since previous weekday (2015 cycle up to 11 days after A level results day)

Applicant status, days since A level results day		2011	2012	2013	2014	2015
All Placed	0	0	0	0	0	0
	1	630	600	520	660	520
	4	730	1,010	830	840	630
	5	310	280	370	300	240
	6	330	290	220	290	290
	7	220	290	220	270	210
	8	270	210	270	280	310
	11	180	270	290	280	90
	12	40	40	20	20	
	13	40	70	100	80	
	14	50	100	100	80	
	15	20	150	60	70	

### AX.20 Placed through Clearing only: Daily net change (from Northern Ireland)

Net increase since previous weekday (2015 cycle up to 11 days after A level results day)



### AX.21 Placed through Clearing only: Daily net change (from Northern Ireland)

Net increase since previous weekday (2015 cycle up to 11 days after A level results day)

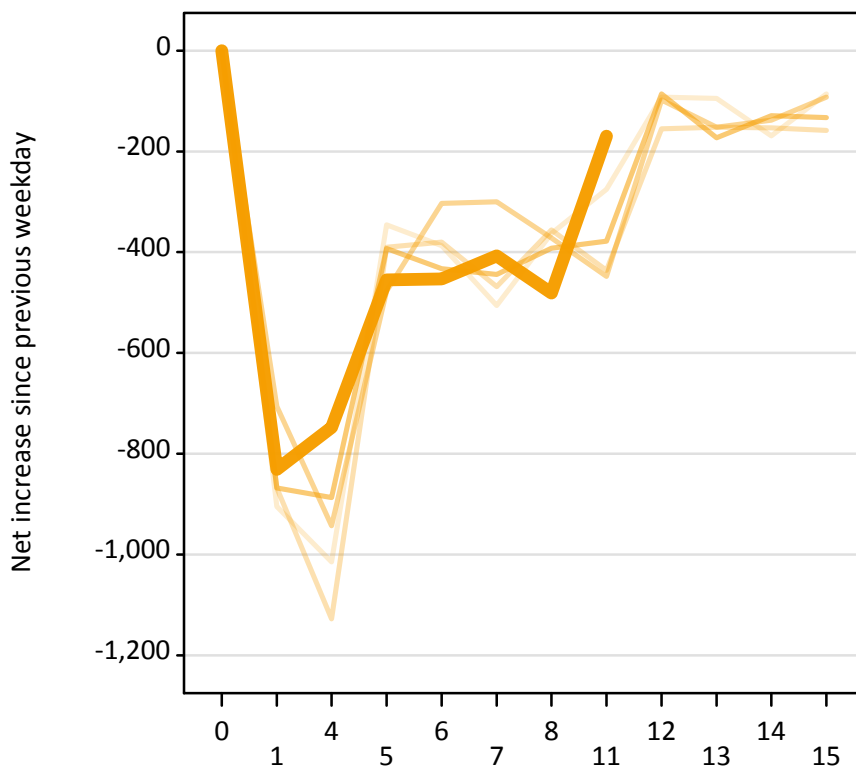
Applicant status, days since A level results day		2011	2012	2013	2014	2015
Placed through Clearing only	0	0	0	0	0	0
	1	10	10	30	10	30
	4	190	190	190	210	230
	5	110	100	80	140	90
	6	120	100	130	120	110
	7	80	90	100	70	80
	8	50	70	60	50	60
	11	40	70	60	110	60
	12	20	40	20	40	
	13	30	50	70	40	
	14	20	50	60	50	
	15	20	50	40	30	



### AX.22 Holding Offer: Daily net change (from Northern Ireland)

Net increase since previous weekday (2015 cycle up to 11 days after A level results day)

- 2011
- 2012
- 2013
- 2014
- 2015



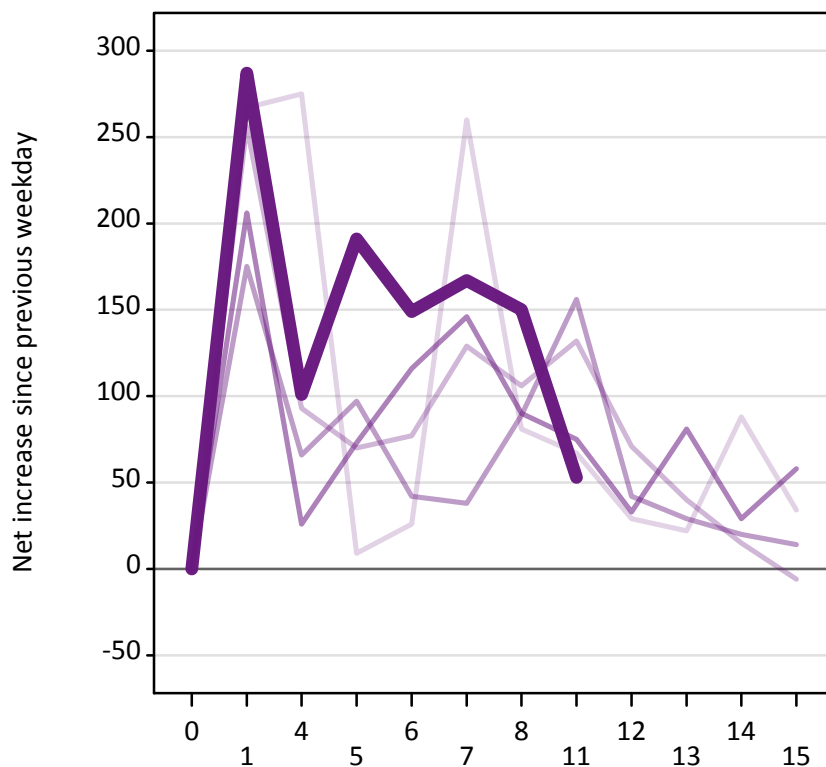
### AX.23 Holding Offer: Daily net change (from Northern Ireland)

Net increase since previous weekday (2015 cycle up to 11 days after A level results day)

Applicant status, days since A level results day		2011	2012	2013	2014	2015
Holding Offer	0	0	0	0	0	0
	1	-910	-870	-710	-870	-830
	4	-1,020	-1,130	-940	-890	-750
	5	-350	-390	-480	-390	-460
	6	-390	-380	-300	-430	-450
	7	-510	-470	-300	-440	-410
	8	-360	-360	-370	-390	-480
	11	-280	-440	-450	-380	-170
	12	-90	-160	-100	-90	
	13	-100	-150	-150	-170	
	14	-170	-150	-140	-130	
	15	-90	-160	-90	-130	

### AX.24 Free to be placed in Clearing: Daily net change (from Northern Ireland)

Net increase since previous weekday (2015 cycle up to 11 days after A level results day)



### AX.25 Free to be placed in Clearing: Daily net change (from Northern Ireland)

Net increase since previous weekday (2015 cycle up to 11 days after A level results day)

Applicant status, days since A level results day		2011	2012	2013	2014	2015
Free to be placed in Clearing	0	0	0	0	0	0
	1	270	260	180	210	290
	4	280	90	70	30	100
	5	10	70	100	70	190
	6	30	80	40	120	150
	7	260	130	40	150	170
	8	80	110	90	90	150
	11	70	130	160	80	50
	12	30	70	40	30	
	13	20	40	30	80	
	14	90	20	20	30	
	15	30	-10	10	60	