

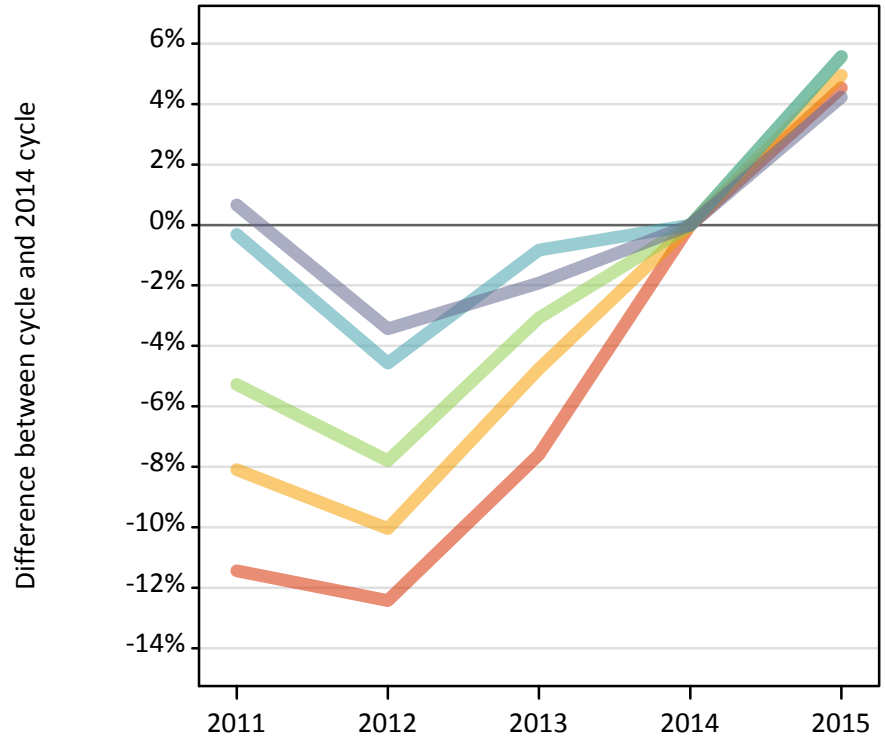
# Daily Clearing Analysis: POLAR3

**Analysis at 00:05 on Monday 24 August 2015 (11 days after A level results day - No Scot.X1)**

**PX.1 Placed 18 year old applicants from England by POLAR3 quintile: 11 days after A level results day**

Placed 18 year old applicants: change relative to 2014 cycle totals

- Quintile 1
- Quintile 2
- Quintile 3
- Quintile 4
- Quintile 5



**PX.2 Placed 18 year old applicants from England by POLAR3 quintile: 11 days after A level results day**

Applicant Status	POLAR3	2011	2012	2013	2014	2015
Placed	Quintile 1	18,520	18,310	19,320	20,910	21,850
	Quintile 2	27,040	26,460	28,020	29,420	30,870
	Quintile 3	35,290	34,350	36,110	37,250	39,330
	Quintile 4	43,420	41,560	43,190	43,550	45,980
	Quintile 5	58,530	56,150	57,020	58,140	60,600

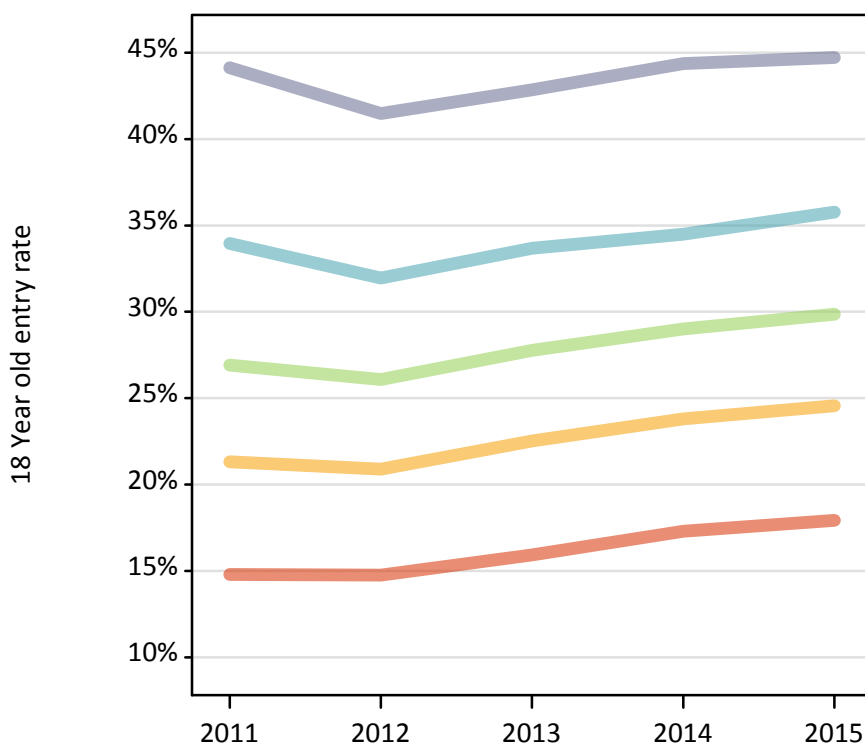
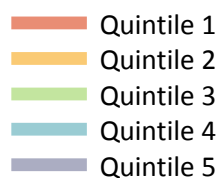
**PX.3 Placed 18 year old applicants from England by POLAR3 quintile: 11 days after A level results day**

Placed 18 year old applicants: change relative to 2014 cycle totals

Applicant Status	POLAR3	2011	2012	2013	2014	2015
Placed	Quintile 1	-11%	-12%	-8%	0%	5%
	Quintile 2	-8%	-10%	-5%	0%	5%
	Quintile 3	-5%	-8%	-3%	0%	6%
	Quintile 4	-0%	-5%	-1%	0%	6%
	Quintile 5	1%	-3%	-2%	0%	4%

**PX.4 Placed 18 year old applicants from England by POLAR3 quintile: 11 days after A level results day**

Placed 18 year old applicants: entry rate



**PX.5 Placed 18 year old applicants from England by POLAR3 quintile: 11 days after A level results day**

Placed 18 year old applicants: entry rate

Applicant Status	POLAR3	2011	2012	2013	2014	2015
Placed	Quintile 1	14.8%	14.8%	15.9%	17.3%	17.9%
	Quintile 2	21.3%	20.9%	22.5%	23.8%	24.6%
	Quintile 3	26.9%	26.1%	27.8%	29.0%	29.9%
	Quintile 4	34.0%	31.9%	33.7%	34.5%	35.8%
	Quintile 5	44.1%	41.5%	42.8%	44.4%	44.7%

**PX.6 Placed 18 year old applicants from England by POLAR3 quintile: 11 days after A level results day**

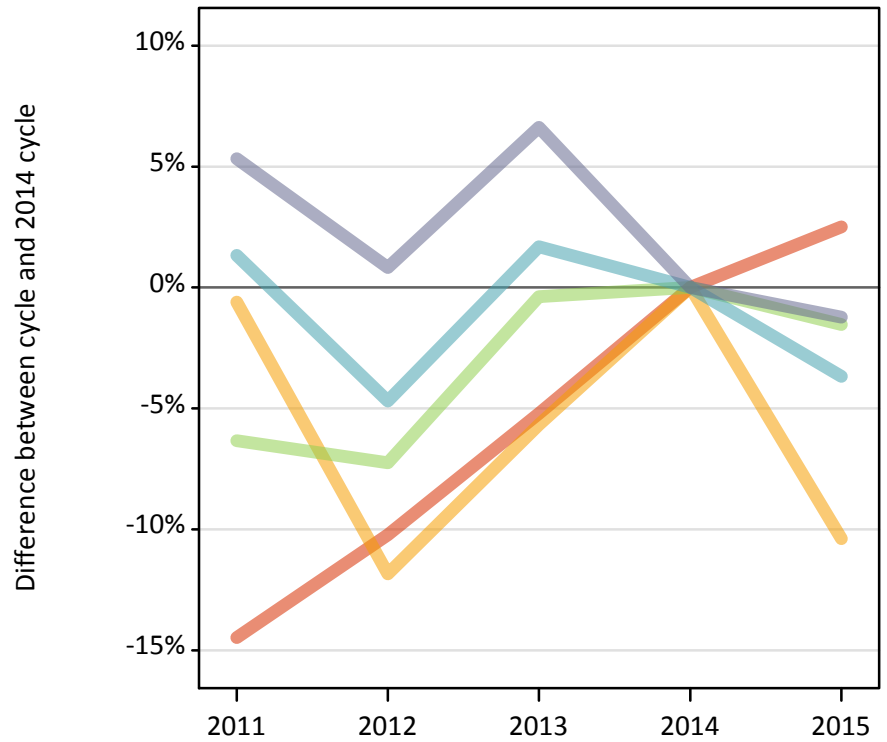
Placed 18 year old applicants: entry rate (indexed to 100 = Quintile 1)

Applicant Status	POLAR3	2011	2012	2013	2014	2015
Placed	Quintile 1	100	100	100	100	100
	Quintile 2	144	142	141	138	137
	Quintile 3	182	177	174	168	167
	Quintile 4	230	216	211	199	200
	Quintile 5	298	281	269	256	249

**PX.7 Placed 18 year old applicants from Northern Ireland by POLAR3 quintile: 11 days after A level results day**

Placed 18 year old applicants: change relative to 2014 cycle totals

- Quintile 1
- Quintile 2
- Quintile 3
- Quintile 4
- Quintile 5



**PX.8 Placed 18 year old applicants from Northern Ireland by POLAR3 quintile: 11 days after A level results day**

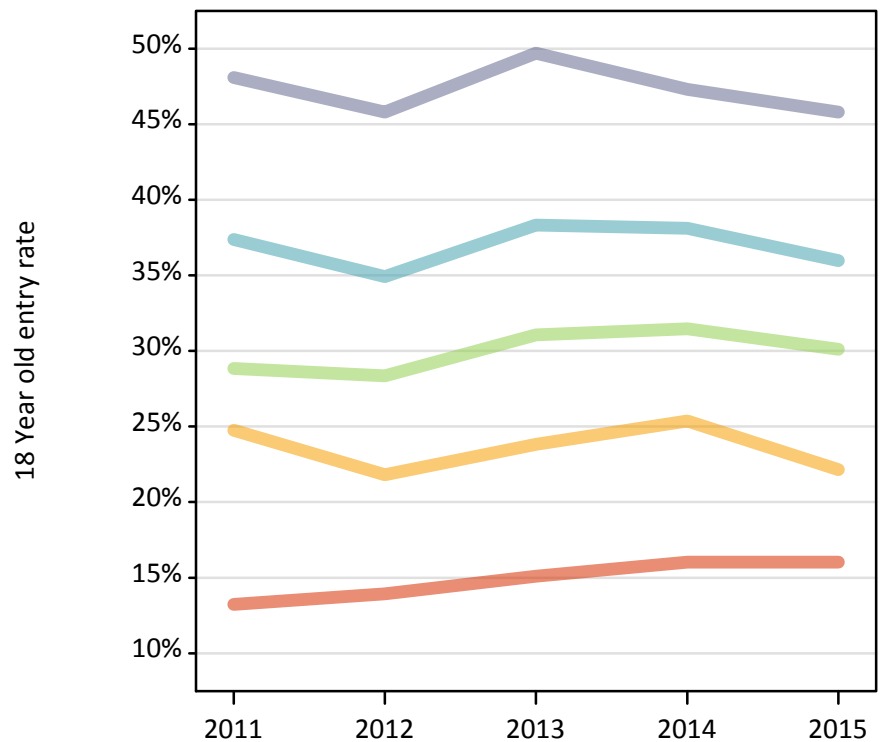
Applicant Status	POLAR3	2011	2012	2013	2014	2015
Placed	Quintile 1	440	470	490	520	530
	Quintile 2	820	730	780	830	740
	Quintile 3	1,230	1,220	1,310	1,310	1,290
	Quintile 4	2,590	2,440	2,600	2,560	2,460
	Quintile 5	3,440	3,290	3,480	3,260	3,220

**PX.9 Placed 18 year old applicants from Northern Ireland by POLAR3 quintile: 11 days after A level results day**

Placed 18 year old applicants: change relative to 2014 cycle totals

Applicant Status	POLAR3	2011	2012	2013	2014	2015
Placed	Quintile 1	-14%	-10%	-5%	0%	3%
	Quintile 2	-1%	-12%	-6%	0%	-10%
	Quintile 3	-6%	-7%	-0%	0%	-2%
	Quintile 4	1%	-5%	2%	0%	-4%
	Quintile 5	5%	1%	7%	0%	-1%

**PX.10 Placed 18 year old applicants from Northern Ireland by POLAR3 quintile: 11 days after A level results day**  
Placed 18 year old applicants: entry rate



**PX.11 Placed 18 year old applicants from Northern Ireland by POLAR3 quintile: 11 days after A level results day**  
Placed 18 year old applicants: entry rate

Applicant Status	POLAR3	2011	2012	2013	2014	2015
Placed	Quintile 1	13.2%	13.9%	15.1%	16.0%	16.0%
	Quintile 2	24.8%	21.8%	23.8%	25.4%	22.1%
	Quintile 3	28.9%	28.4%	31.1%	31.5%	30.1%
	Quintile 4	37.4%	34.9%	38.3%	38.1%	36.0%
	Quintile 5	48.1%	45.8%	49.7%	47.3%	45.8%

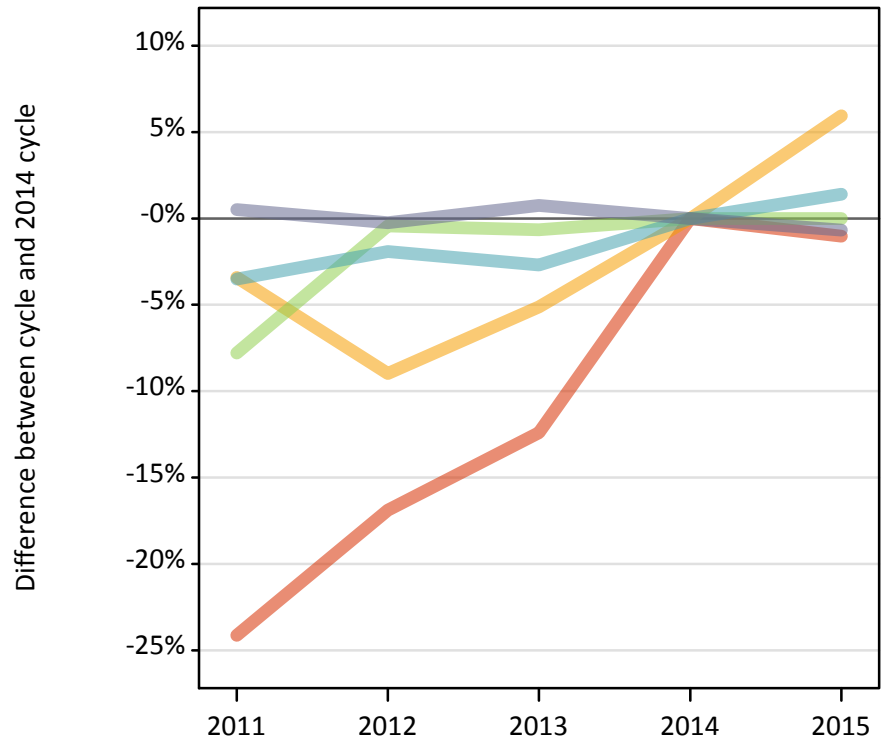
**PX.12 Placed 18 year old applicants from Northern Ireland by POLAR3 quintile: 11 days after A level results day**  
Placed 18 year old applicants: entry rate (indexed to 100 = Quintile 1)

Applicant Status	POLAR3	2011	2012	2013	2014	2015
Placed	Quintile 1	100	100	100	100	100
	Quintile 2	187	157	158	158	138
	Quintile 3	218	204	206	196	188
	Quintile 4	282	251	254	238	224
	Quintile 5	363	329	329	295	286

**PX.13 Placed 18 year old applicants from Scotland by POLAR3 quintile: 11 days after A level results day**

Placed 18 year old applicants: change relative to 2014 cycle totals

- Quintile 1
- Quintile 2
- Quintile 3
- Quintile 4
- Quintile 5



**PX.14 Placed 18 year old applicants from Scotland by POLAR3 quintile: 11 days after A level results day**

Applicant Status	POLAR3	2011	2012	2013	2014	2015
Placed	Quintile 1	440	480	510	580	570
	Quintile 2	1,300	1,230	1,280	1,350	1,430
	Quintile 3	1,950	2,110	2,100	2,120	2,120
	Quintile 4	3,160	3,210	3,190	3,280	3,320
	Quintile 5	6,620	6,570	6,630	6,580	6,540

**PX.15 Placed 18 year old applicants from Scotland by POLAR3 quintile: 11 days after A level results day**

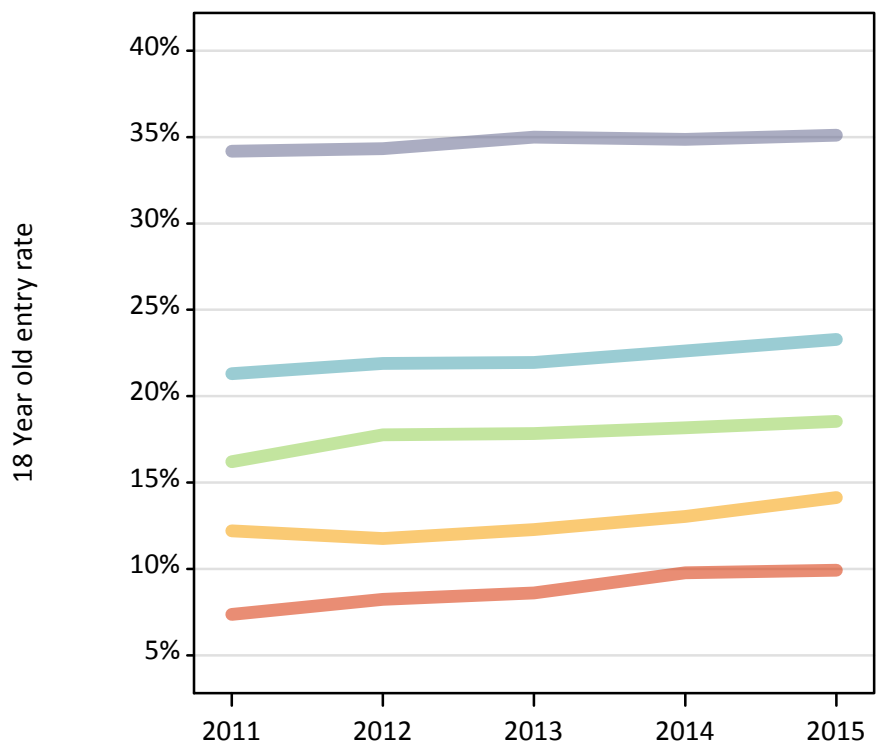
Placed 18 year old applicants: change relative to 2014 cycle totals

Applicant Status	POLAR3	2011	2012	2013	2014	2015
Placed	Quintile 1	-24%	-17%	-12%	0%	-1%
	Quintile 2	-3%	-9%	-5%	0%	6%
	Quintile 3	-8%	-0%	-1%	0%	0%
	Quintile 4	-4%	-2%	-3%	0%	1%
	Quintile 5	1%	-0%	1%	0%	-1%

**PX.16 Placed 18 year old applicants from Scotland by POLAR3 quintile: 11 days after A level results day**

Placed 18 year old applicants: entry rate

- Quintile 1
- Quintile 2
- Quintile 3
- Quintile 4
- Quintile 5



**PX.17 Placed 18 year old applicants from Scotland by POLAR3 quintile: 11 days after A level results day**

Placed 18 year old applicants: entry rate

Applicant Status	POLAR3	2011	2012	2013	2014	2015
Placed	Quintile 1	7.4%	8.2%	8.6%	9.8%	9.9%
	Quintile 2	12.2%	11.8%	12.3%	13.0%	14.1%
	Quintile 3	16.2%	17.8%	17.8%	18.2%	18.5%
	Quintile 4	21.3%	21.9%	21.9%	22.6%	23.3%
	Quintile 5	34.2%	34.3%	35.0%	34.9%	35.1%

**PX.18 Placed 18 year old applicants from Scotland by POLAR3 quintile: 11 days after A level results day**

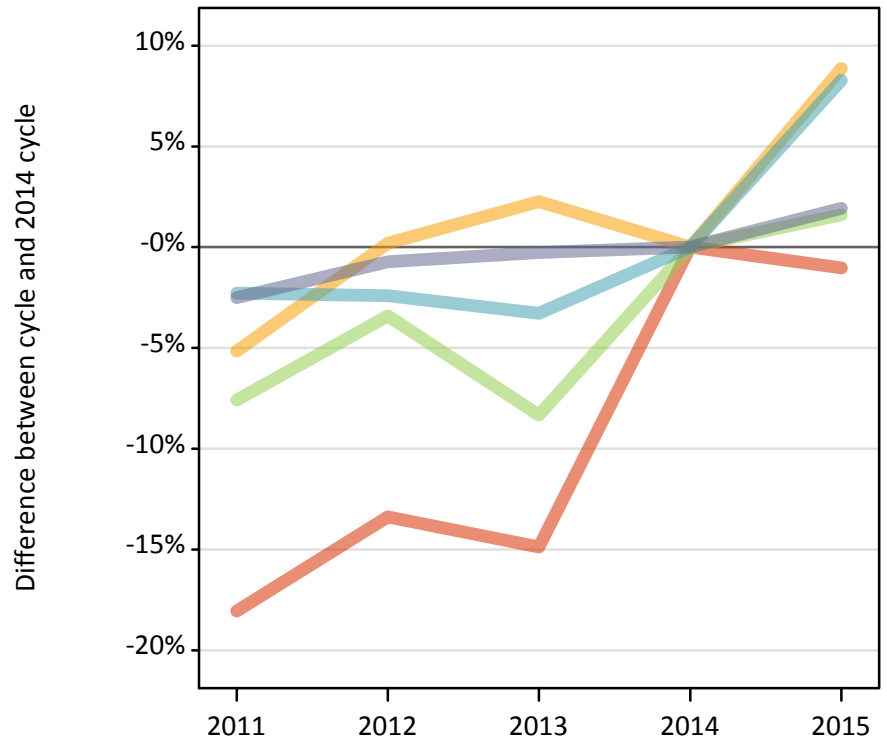
Placed 18 year old applicants: entry rate (indexed to 100 = Quintile 1)

Applicant Status	POLAR3	2011	2012	2013	2014	2015
Placed	Quintile 1	100	100	100	100	100
	Quintile 2	166	143	142	133	143
	Quintile 3	220	216	207	186	187
	Quintile 4	289	266	255	231	235
	Quintile 5	464	417	406	357	354

**PX.19 Placed 18 year old applicants from Wales by POLAR3 quintile: 11 days after A level results day**

Placed 18 year old applicants: change relative to 2014 cycle totals

- Quintile 1
- Quintile 2
- Quintile 3
- Quintile 4
- Quintile 5



**PX.20 Placed 18 year old applicants from Wales by POLAR3 quintile: 11 days after A level results day**

Applicant Status	POLAR3	2011	2012	2013	2014	2015
Placed	Quintile 1	1,210	1,280	1,250	1,470	1,460
	Quintile 2	1,840	1,940	1,980	1,940	2,110
	Quintile 3	1,600	1,670	1,590	1,730	1,760
	Quintile 4	2,150	2,150	2,130	2,200	2,380
	Quintile 5	2,570	2,620	2,630	2,640	2,690

**PX.21 Placed 18 year old applicants from Wales by POLAR3 quintile: 11 days after A level results day**

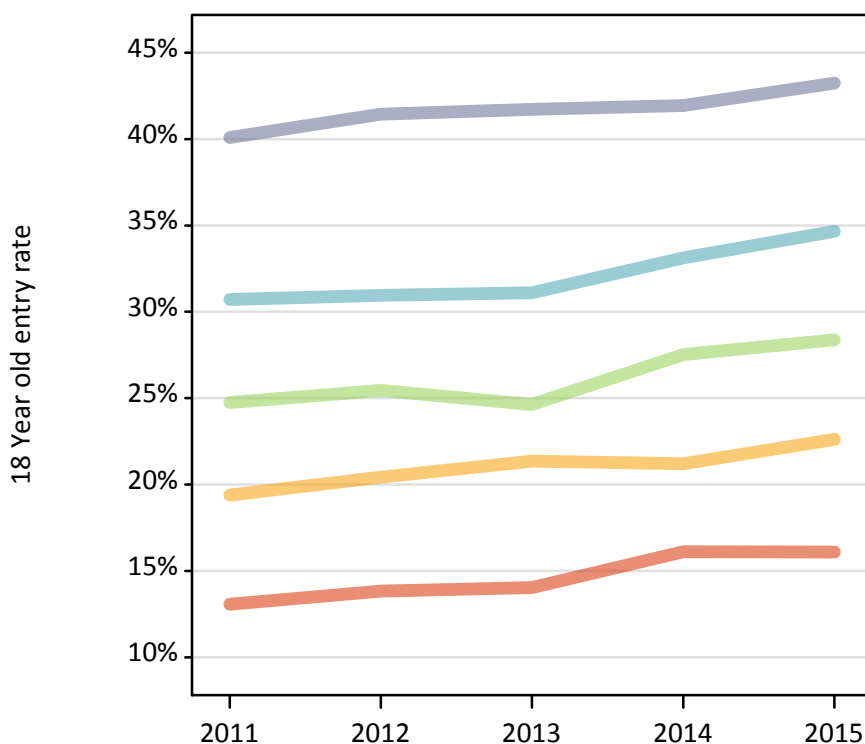
Placed 18 year old applicants: change relative to 2014 cycle totals

Applicant Status	POLAR3	2011	2012	2013	2014	2015
Placed	Quintile 1	-18%	-13%	-15%	0%	-1%
	Quintile 2	-5%	0%	2%	0%	9%
	Quintile 3	-8%	-3%	-8%	0%	2%
	Quintile 4	-2%	-2%	-3%	0%	8%
	Quintile 5	-3%	-1%	-0%	0%	2%

**PX.22 Placed 18 year old applicants from Wales by POLAR3 quintile: 11 days after A level results day**

Placed 18 year old applicants: entry rate

- Quintile 1
- Quintile 2
- Quintile 3
- Quintile 4
- Quintile 5



**PX.23 Placed 18 year old applicants from Wales by POLAR3 quintile: 11 days after A level results day**

Placed 18 year old applicants: entry rate

Applicant Status	POLAR3	2011	2012	2013	2014	2015
Placed	Quintile 1	13.1%	13.8%	14.0%	16.1%	16.1%
	Quintile 2	19.4%	20.4%	21.3%	21.2%	22.6%
	Quintile 3	24.8%	25.4%	24.6%	27.5%	28.4%
	Quintile 4	30.7%	31.0%	31.1%	33.1%	34.7%
	Quintile 5	40.1%	41.4%	41.7%	41.9%	43.2%

**PX.24 Placed 18 year old applicants from Wales by POLAR3 quintile: 11 days after A level results day**

Placed 18 year old applicants: entry rate (indexed to 100 = Quintile 1)

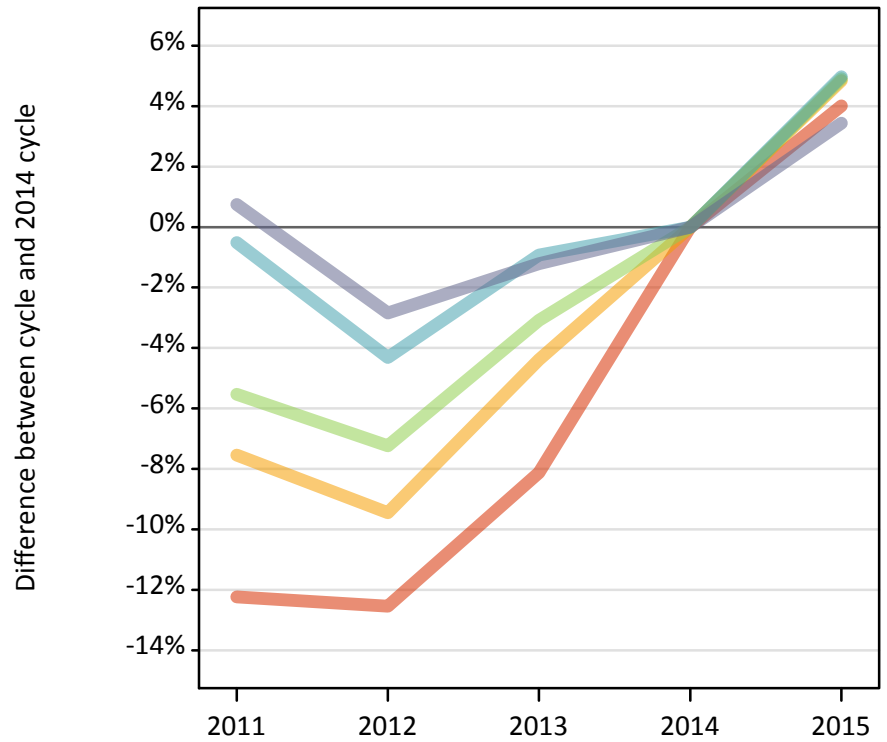
Applicant Status	POLAR3	2011	2012	2013	2014	2015
Placed	Quintile 1	100	100	100	100	100
	Quintile 2	148	148	152	132	141
	Quintile 3	189	184	175	171	176
	Quintile 4	235	224	221	205	216
	Quintile 5	307	300	297	260	269



**PX.25 Placed 18 year old applicants from the UK by POLAR3 quintile: 11 days after A level results day**

Placed 18 year old applicants: change relative to 2014 cycle totals

- Quintile 1
- Quintile 2
- Quintile 3
- Quintile 4
- Quintile 5



**PX.26 Placed 18 year old applicants from the UK by POLAR3 quintile: 11 days after A level results day**

Applicant Status	POLAR3	2011	2012	2013	2014	2015
Placed	Quintile 1	20,610	20,530	21,570	23,480	24,420
	Quintile 2	31,000	30,360	32,060	33,530	35,150
	Quintile 3	40,060	39,340	41,100	42,410	44,490
	Quintile 4	51,320	49,360	51,110	51,580	54,150
	Quintile 5	71,150	68,620	69,770	70,620	73,050

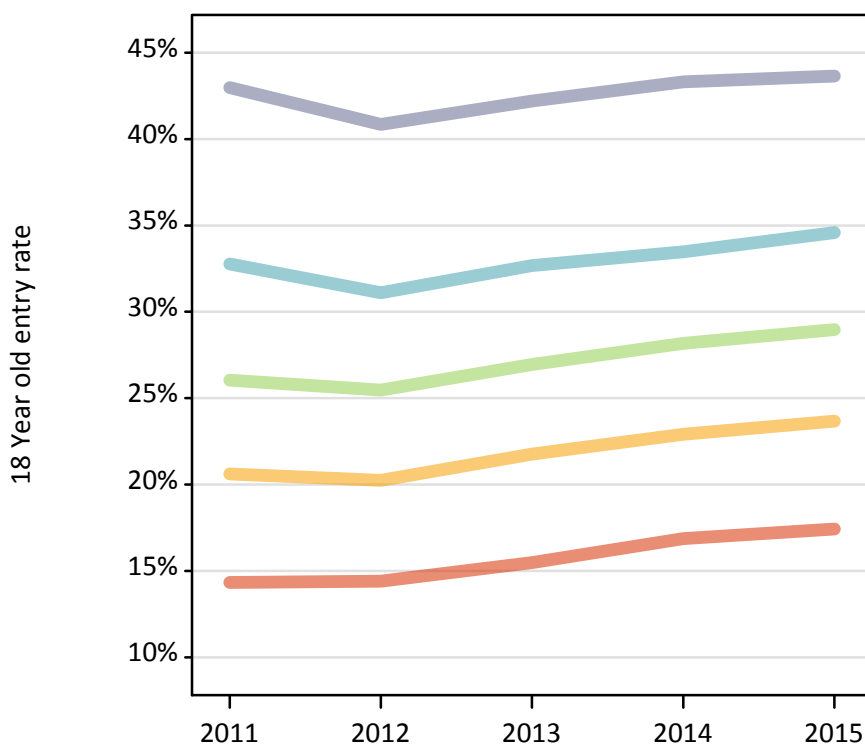
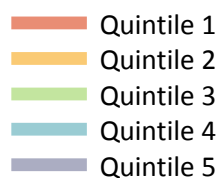
**PX.27 Placed 18 year old applicants from the UK by POLAR3 quintile: 11 days after A level results day**

Placed 18 year old applicants: change relative to 2014 cycle totals

Applicant Status	POLAR3	2011	2012	2013	2014	2015
Placed	Quintile 1	-12%	-13%	-8%	0%	4%
	Quintile 2	-8%	-9%	-4%	0%	5%
	Quintile 3	-6%	-7%	-3%	0%	5%
	Quintile 4	-1%	-4%	-1%	0%	5%
	Quintile 5	1%	-3%	-1%	0%	3%

**PX.28 Placed 18 year old applicants from the UK by POLAR3 quintile: 11 days after A level results day**

Placed 18 year old applicants: entry rate



**PX.29 Placed 18 year old applicants from the UK by POLAR3 quintile: 11 days after A level results day**

Placed 18 year old applicants: entry rate

Applicant Status	POLAR3	2011	2012	2013	2014	2015
Placed	Quintile 1	14.3%	14.4%	15.5%	16.9%	17.4%
	Quintile 2	20.6%	20.3%	21.8%	22.9%	23.7%
	Quintile 3	26.0%	25.5%	27.0%	28.2%	29.0%
	Quintile 4	32.8%	31.1%	32.7%	33.5%	34.6%
	Quintile 5	43.0%	40.8%	42.2%	43.3%	43.6%

**PX.30 Placed 18 year old applicants from the UK by POLAR3 quintile: 11 days after A level results day**

Placed 18 year old applicants: entry rate (indexed to 100 = Quintile 1)

Applicant Status	POLAR3	2011	2012	2013	2014	2015
Placed	Quintile 1	100	100	100	100	100
	Quintile 2	144	141	141	136	136
	Quintile 3	182	177	174	167	166
	Quintile 4	229	216	211	198	198
	Quintile 5	300	283	273	257	250