

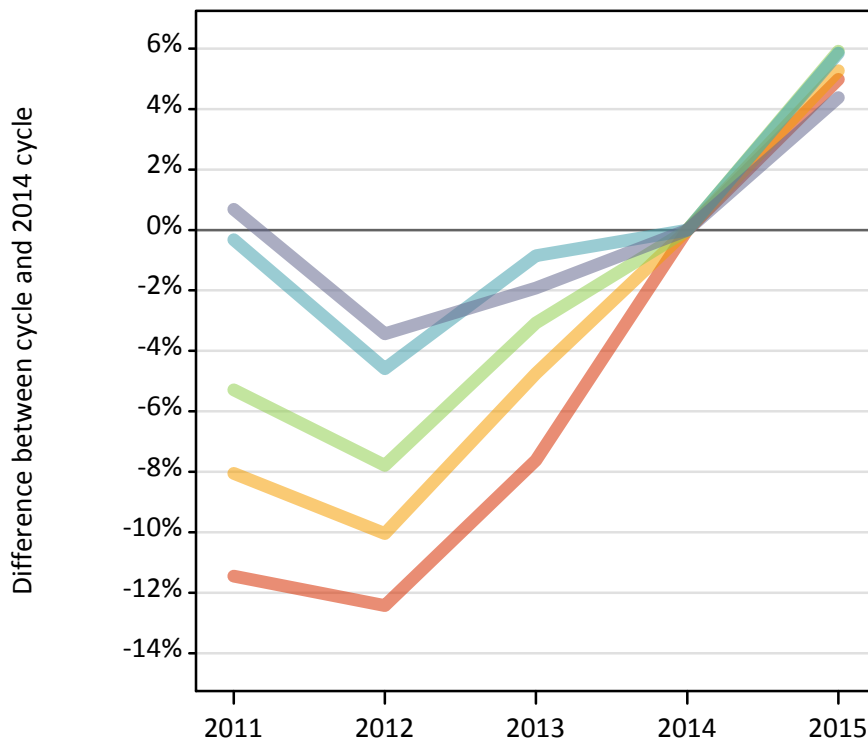
Daily Clearing Analysis: POLAR3

Analysis at 00:05 on Tuesday 25 August 2015 (12 days after A level results day)

P.1 Placed 18 year old applicants from England by POLAR3 quintile: 12 days after A level results day

Placed 18 year old applicants: change relative to 2014 cycle totals

- Quintile 1
- Quintile 2
- Quintile 3
- Quintile 4
- Quintile 5



P.2 Placed 18 year old applicants from England by POLAR3 quintile: 12 days after A level results day

Applicant Status	POLAR3	2011	2012	2013	2014	2015
Placed	Quintile 1	18,510	18,310	19,320	20,910	21,950
	Quintile 2	27,050	26,460	28,020	29,420	30,970
	Quintile 3	35,290	34,360	36,110	37,260	39,460
	Quintile 4	43,420	41,570	43,200	43,570	46,120
	Quintile 5	58,540	56,140	57,020	58,140	60,690

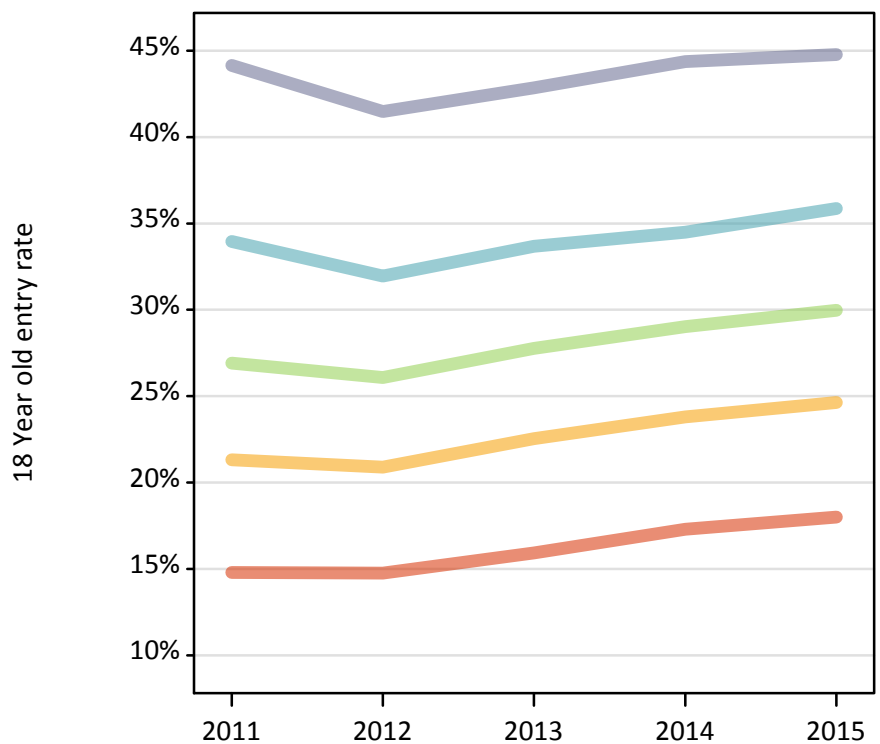
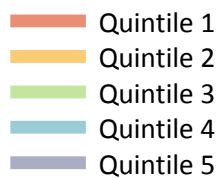
P.3 Placed 18 year old applicants from England by POLAR3 quintile: 12 days after A level results day

Placed 18 year old applicants: change relative to 2014 cycle totals

Applicant Status	POLAR3	2011	2012	2013	2014	2015
Placed	Quintile 1	-11%	-12%	-8%	0%	5%
	Quintile 2	-8%	-10%	-5%	0%	5%
	Quintile 3	-5%	-8%	-3%	0%	6%
	Quintile 4	-0%	-5%	-1%	0%	6%
	Quintile 5	1%	-3%	-2%	0%	4%

P.4 Placed 18 year old applicants from England by POLAR3 quintile: 12 days after A level results day

Placed 18 year old applicants: entry rate



P.5 Placed 18 year old applicants from England by POLAR3 quintile: 12 days after A level results day

Placed 18 year old applicants: entry rate

Applicant Status	POLAR3	2011	2012	2013	2014	2015
Placed	Quintile 1	14.8%	14.8%	15.9%	17.3%	18.0%
	Quintile 2	21.3%	20.9%	22.5%	23.8%	24.6%
	Quintile 3	26.9%	26.1%	27.8%	29.0%	30.0%
	Quintile 4	34.0%	31.9%	33.7%	34.5%	35.9%
	Quintile 5	44.1%	41.5%	42.8%	44.4%	44.8%

P.6 Placed 18 year old applicants from England by POLAR3 quintile: 12 days after A level results day

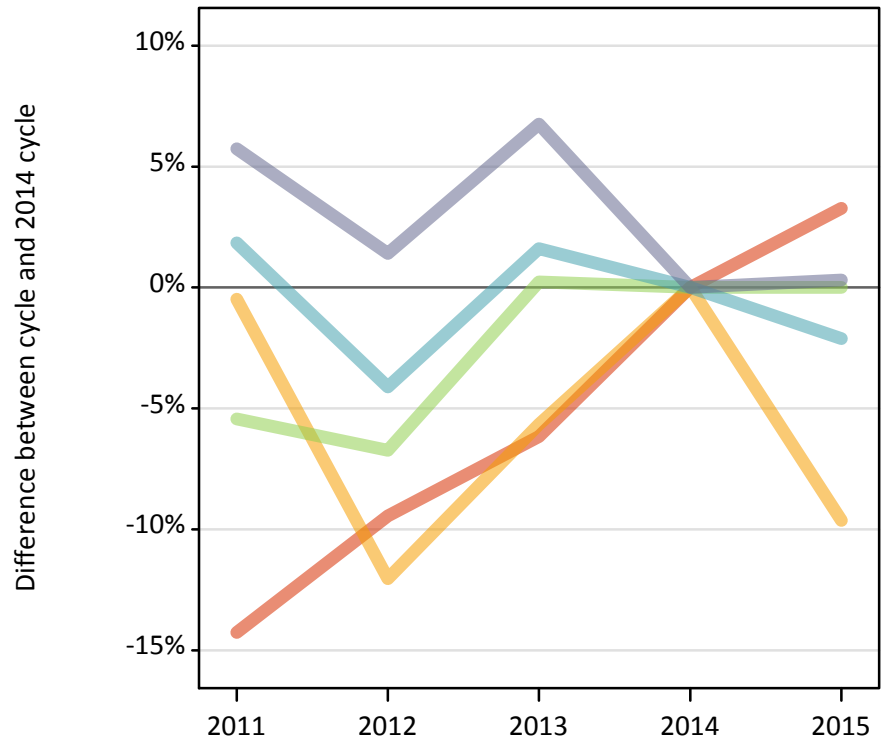
Placed 18 year old applicants: entry rate (indexed to 100 = Quintile 1)

Applicant Status	POLAR3	2011	2012	2013	2014	2015
Placed	Quintile 1	100	100	100	100	100
	Quintile 2	144	142	141	138	137
	Quintile 3	182	177	174	168	167
	Quintile 4	230	216	211	199	199
	Quintile 5	298	281	269	256	249

P.7 Placed 18 year old applicants from Northern Ireland by POLAR3 quintile: 12 days after A level results day

Placed 18 year old applicants: change relative to 2014 cycle totals

- Quintile 1
- Quintile 2
- Quintile 3
- Quintile 4
- Quintile 5



P.8 Placed 18 year old applicants from Northern Ireland by POLAR3 quintile: 12 days after A level results day

Applicant Status	POLAR3	2011	2012	2013	2014	2015
Placed	Quintile 1	450	470	490	520	540
	Quintile 2	830	730	780	830	750
	Quintile 3	1,240	1,220	1,310	1,310	1,310
	Quintile 4	2,600	2,450	2,600	2,550	2,500
	Quintile 5	3,450	3,300	3,480	3,260	3,270

P.9 Placed 18 year old applicants from Northern Ireland by POLAR3 quintile: 12 days after A level results day

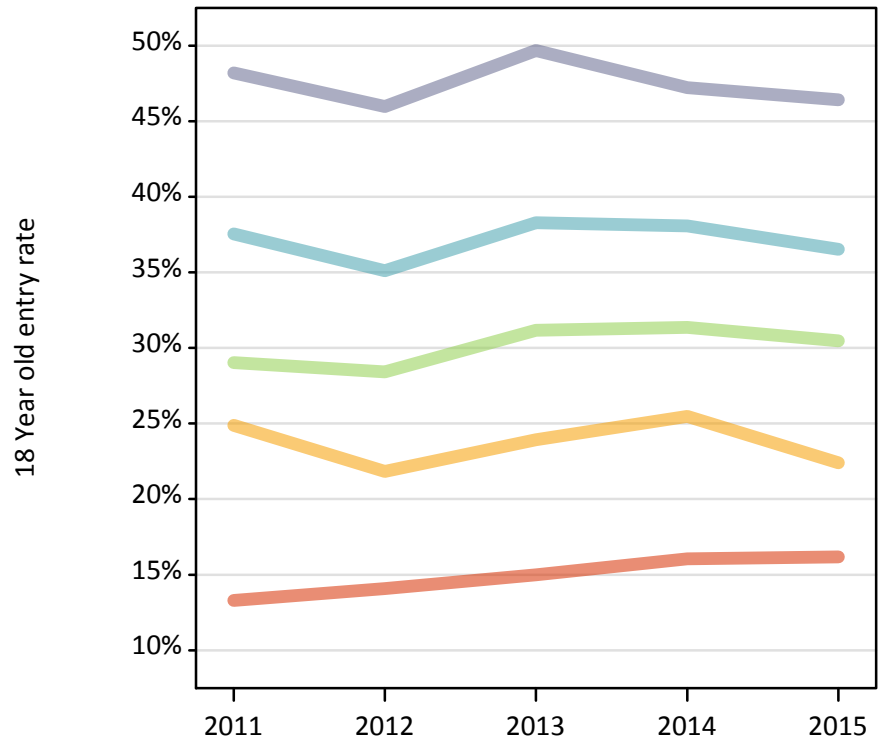
Placed 18 year old applicants: change relative to 2014 cycle totals

Applicant Status	POLAR3	2011	2012	2013	2014	2015
Placed	Quintile 1	-14%	-9%	-6%	0%	3%
	Quintile 2	-0%	-12%	-6%	0%	-10%
	Quintile 3	-5%	-7%	0%	0%	0%
	Quintile 4	2%	-4%	2%	0%	-2%
	Quintile 5	6%	1%	7%	0%	0%

P.10 Placed 18 year old applicants from Northern Ireland by POLAR3 quintile: 12 days after A level results day

Placed 18 year old applicants: entry rate

- Quintile 1
- Quintile 2
- Quintile 3
- Quintile 4
- Quintile 5



P.11 Placed 18 year old applicants from Northern Ireland by POLAR3 quintile: 12 days after A level results day

Placed 18 year old applicants: entry rate

Applicant Status	POLAR3	2011	2012	2013	2014	2015
Placed	Quintile 1	13.3%	14.1%	15.0%	16.1%	16.2%
	Quintile 2	24.9%	21.8%	23.9%	25.5%	22.4%
	Quintile 3	29.0%	28.4%	31.2%	31.4%	30.5%
	Quintile 4	37.5%	35.1%	38.3%	38.1%	36.5%
	Quintile 5	48.2%	46.0%	49.7%	47.2%	46.4%

P.12 Placed 18 year old applicants from Northern Ireland by POLAR3 quintile: 12 days after A level results day

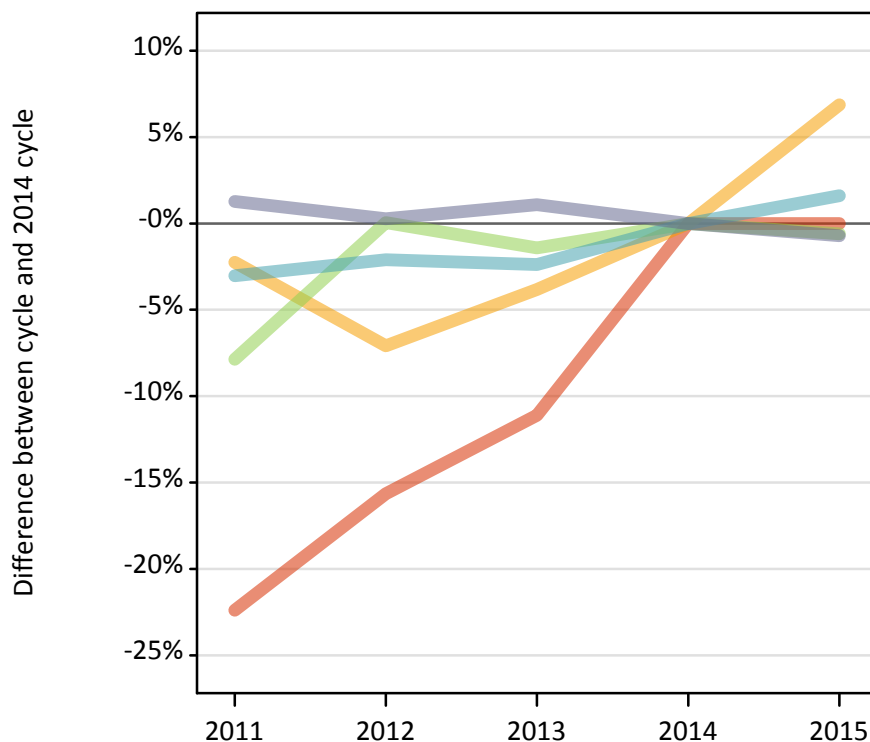
Placed 18 year old applicants: entry rate (indexed to 100 = Quintile 1)

Applicant Status	POLAR3	2011	2012	2013	2014	2015
Placed	Quintile 1	100	100	100	100	100
	Quintile 2	187	155	160	159	139
	Quintile 3	218	202	208	195	188
	Quintile 4	282	249	256	237	226
	Quintile 5	362	327	332	294	287

P.13 Placed 18 year old applicants from Scotland by POLAR3 quintile: 12 days after A level results day

Placed 18 year old applicants: change relative to 2014 cycle totals

- Quintile 1
- Quintile 2
- Quintile 3
- Quintile 4
- Quintile 5



P.14 Placed 18 year old applicants from Scotland by POLAR3 quintile: 12 days after A level results day

Applicant Status	POLAR3	2011	2012	2013	2014	2015
Placed	Quintile 1	460	500	530	590	590
	Quintile 2	1,350	1,290	1,330	1,380	1,480
	Quintile 3	2,020	2,190	2,160	2,190	2,180
	Quintile 4	3,270	3,300	3,290	3,370	3,430
	Quintile 5	6,820	6,750	6,810	6,730	6,690

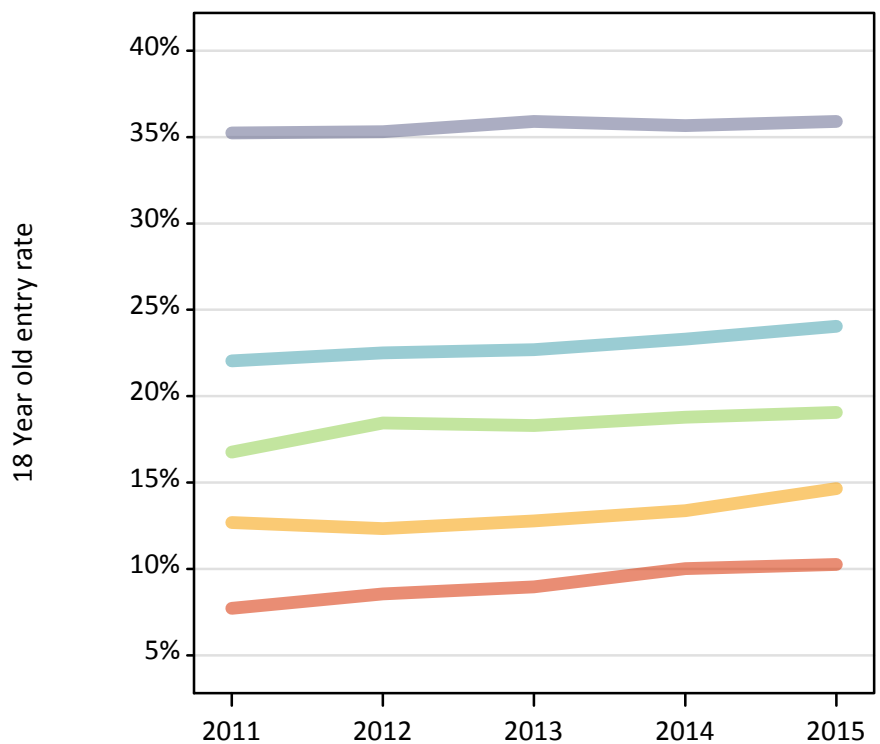
P.15 Placed 18 year old applicants from Scotland by POLAR3 quintile: 12 days after A level results day

Placed 18 year old applicants: change relative to 2014 cycle totals

Applicant Status	POLAR3	2011	2012	2013	2014	2015
Placed	Quintile 1	-22%	-16%	-11%	0%	0%
	Quintile 2	-2%	-7%	-4%	0%	7%
	Quintile 3	-8%	0%	-1%	0%	-1%
	Quintile 4	-3%	-2%	-2%	0%	2%
	Quintile 5	1%	0%	1%	0%	-1%

P.16 Placed 18 year old applicants from Scotland by POLAR3 quintile: 12 days after A level results day

Placed 18 year old applicants: entry rate



P.17 Placed 18 year old applicants from Scotland by POLAR3 quintile: 12 days after A level results day

Placed 18 year old applicants: entry rate

Applicant Status	POLAR3	2011	2012	2013	2014	2015
Placed	Quintile 1	7.7%	8.6%	9.0%	10.0%	10.3%
	Quintile 2	12.7%	12.3%	12.8%	13.4%	14.6%
	Quintile 3	16.8%	18.5%	18.3%	18.8%	19.1%
	Quintile 4	22.0%	22.5%	22.7%	23.3%	24.0%
	Quintile 5	35.2%	35.3%	35.9%	35.7%	35.9%

P.18 Placed 18 year old applicants from Scotland by POLAR3 quintile: 12 days after A level results day

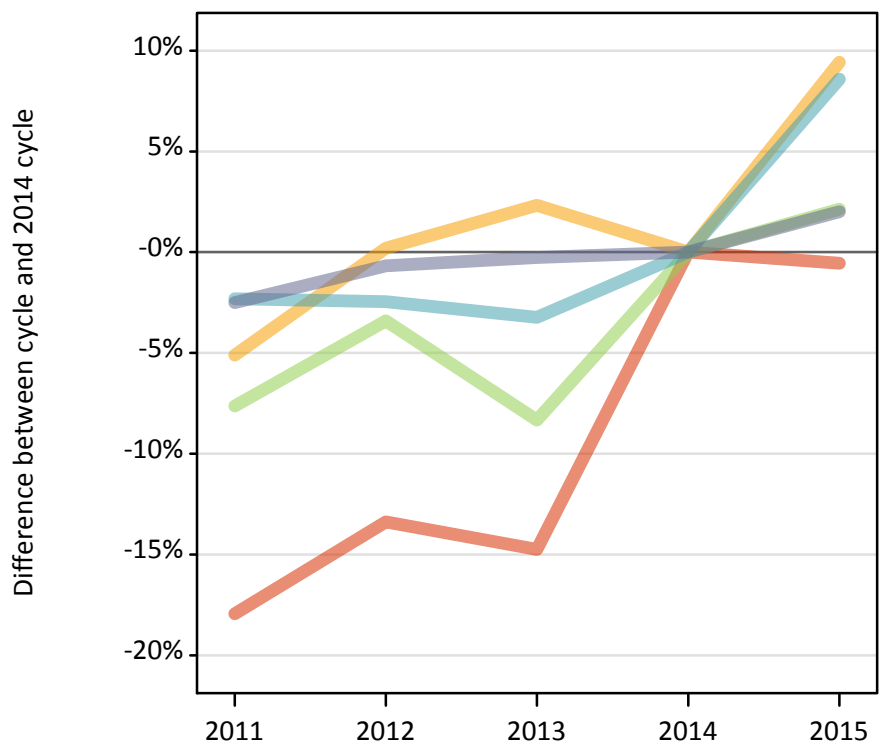
Placed 18 year old applicants: entry rate (indexed to 100 = Quintile 1)

Applicant Status	POLAR3	2011	2012	2013	2014	2015
Placed	Quintile 1	100	100	100	100	100
	Quintile 2	164	144	143	134	143
	Quintile 3	217	216	204	188	186
	Quintile 4	286	263	253	233	234
	Quintile 5	456	413	401	356	350

P.19 Placed 18 year old applicants from Wales by POLAR3 quintile: 12 days after A level results day

Placed 18 year old applicants: change relative to 2014 cycle totals

- Quintile 1
- Quintile 2
- Quintile 3
- Quintile 4
- Quintile 5



P.20 Placed 18 year old applicants from Wales by POLAR3 quintile: 12 days after A level results day

Applicant Status	POLAR3	2011	2012	2013	2014	2015
Placed	Quintile 1	1,210	1,280	1,260	1,470	1,460
	Quintile 2	1,840	1,940	1,990	1,940	2,120
	Quintile 3	1,600	1,670	1,590	1,730	1,770
	Quintile 4	2,150	2,150	2,130	2,200	2,390
	Quintile 5	2,570	2,620	2,630	2,640	2,690

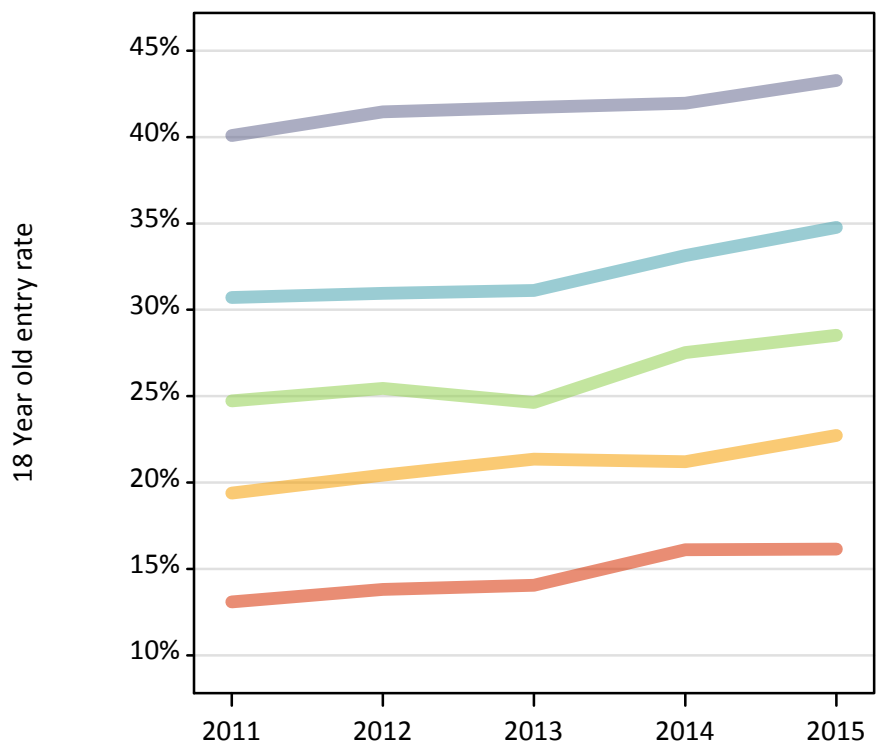
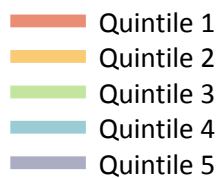
P.21 Placed 18 year old applicants from Wales by POLAR3 quintile: 12 days after A level results day

Placed 18 year old applicants: change relative to 2014 cycle totals

Applicant Status	POLAR3	2011	2012	2013	2014	2015
Placed	Quintile 1	-18%	-13%	-15%	0%	-1%
	Quintile 2	-5%	0%	2%	0%	9%
	Quintile 3	-8%	-3%	-8%	0%	2%
	Quintile 4	-2%	-2%	-3%	0%	9%
	Quintile 5	-3%	-1%	-0%	0%	2%

P.22 Placed 18 year old applicants from Wales by POLAR3 quintile: 12 days after A level results day

Placed 18 year old applicants: entry rate



P.23 Placed 18 year old applicants from Wales by POLAR3 quintile: 12 days after A level results day

Placed 18 year old applicants: entry rate

Applicant Status	POLAR3	2011	2012	2013	2014	2015
Placed	Quintile 1	13.1%	13.8%	14.1%	16.1%	16.1%
	Quintile 2	19.4%	20.4%	21.4%	21.2%	22.7%
	Quintile 3	24.7%	25.4%	24.6%	27.5%	28.5%
	Quintile 4	30.7%	31.0%	31.1%	33.1%	34.8%
	Quintile 5	40.1%	41.5%	41.7%	42.0%	43.3%

P.24 Placed 18 year old applicants from Wales by POLAR3 quintile: 12 days after A level results day

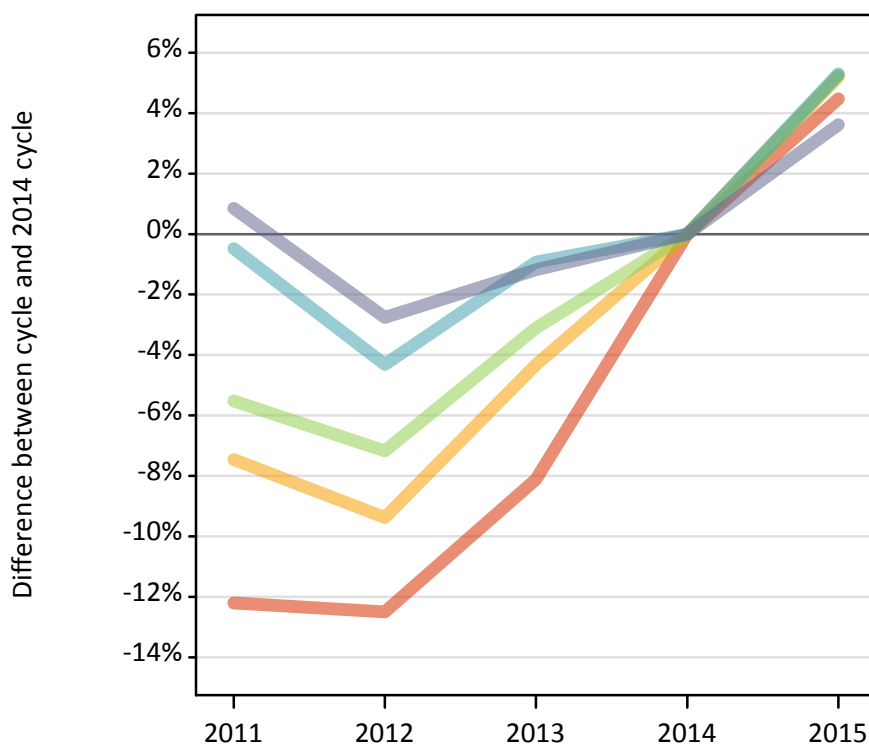
Placed 18 year old applicants: entry rate (indexed to 100 = Quintile 1)

Applicant Status	POLAR3	2011	2012	2013	2014	2015
Placed	Quintile 1	100	100	100	100	100
	Quintile 2	148	148	152	132	141
	Quintile 3	189	184	175	171	177
	Quintile 4	235	224	221	206	215
	Quintile 5	306	300	297	260	268

P.25 Placed 18 year old applicants from the UK by POLAR3 quintile: 12 days after A level results day

Placed 18 year old applicants: change relative to 2014 cycle totals

- Quintile 1
- Quintile 2
- Quintile 3
- Quintile 4
- Quintile 5



P.26 Placed 18 year old applicants from the UK by POLAR3 quintile: 12 days after A level results day

Applicant Status	POLAR3	2011	2012	2013	2014	2015
Placed	Quintile 1	20,630	20,560	21,590	23,490	24,540
	Quintile 2	31,070	30,420	32,120	33,570	35,320
	Quintile 3	40,140	39,440	41,160	42,480	44,710
	Quintile 4	51,450	49,460	51,220	51,690	54,430
	Quintile 5	71,370	68,820	69,940	70,770	73,330

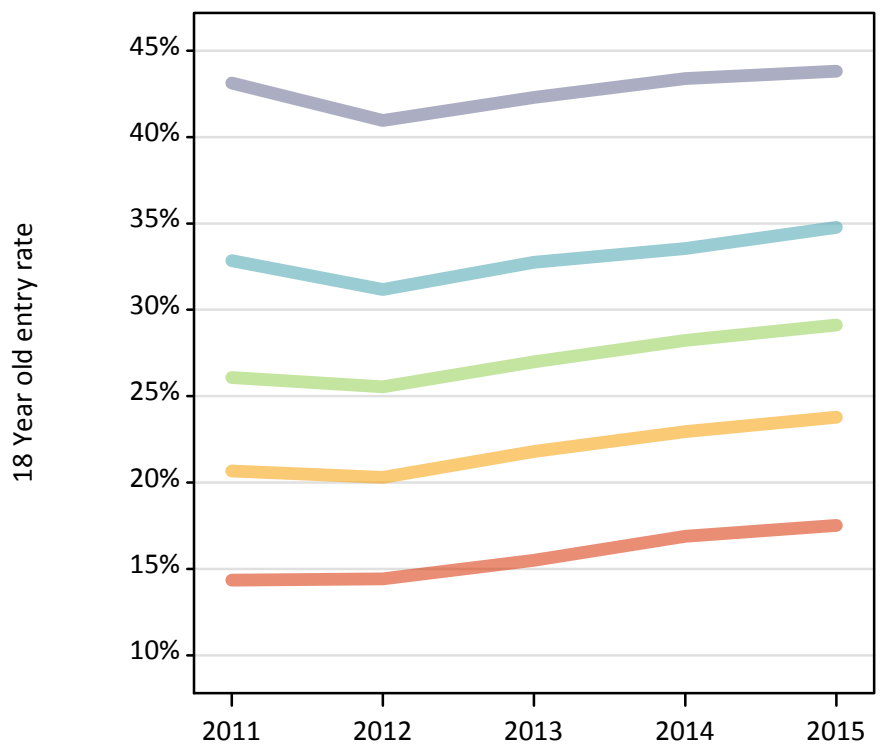
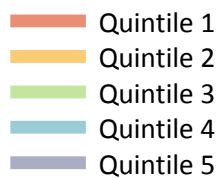
P.27 Placed 18 year old applicants from the UK by POLAR3 quintile: 12 days after A level results day

Placed 18 year old applicants: change relative to 2014 cycle totals

Applicant Status	POLAR3	2011	2012	2013	2014	2015
Placed	Quintile 1	-12%	-13%	-8%	0%	4%
	Quintile 2	-7%	-9%	-4%	0%	5%
	Quintile 3	-6%	-7%	-3%	0%	5%
	Quintile 4	-0%	-4%	-1%	0%	5%
	Quintile 5	1%	-3%	-1%	0%	4%

P.28 Placed 18 year old applicants from the UK by POLAR3 quintile: 12 days after A level results day

Placed 18 year old applicants: entry rate



P.29 Placed 18 year old applicants from the UK by POLAR3 quintile: 12 days after A level results day

Placed 18 year old applicants: entry rate

Applicant Status	POLAR3	2011	2012	2013	2014	2015
Placed	Quintile 1	14.4%	14.4%	15.5%	16.9%	17.5%
	Quintile 2	20.7%	20.3%	21.8%	22.9%	23.8%
	Quintile 3	26.1%	25.5%	27.0%	28.2%	29.1%
	Quintile 4	32.8%	31.2%	32.7%	33.5%	34.8%
	Quintile 5	43.1%	41.0%	42.3%	43.4%	43.8%

P.30 Placed 18 year old applicants from the UK by POLAR3 quintile: 12 days after A level results day

Placed 18 year old applicants: entry rate (indexed to 100 = Quintile 1)

Applicant Status	POLAR3	2011	2012	2013	2014	2015
Placed	Quintile 1	100	100	100	100	100
	Quintile 2	144	141	141	136	136
	Quintile 3	182	177	174	167	166
	Quintile 4	229	216	211	199	198
	Quintile 5	300	284	273	257	250