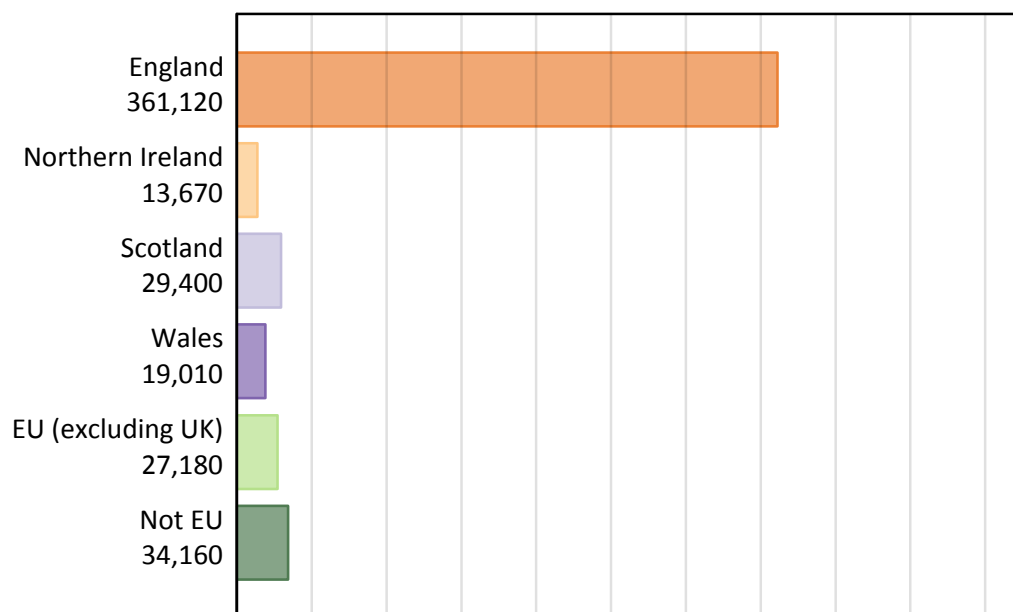


# Daily Clearing Analysis: Country

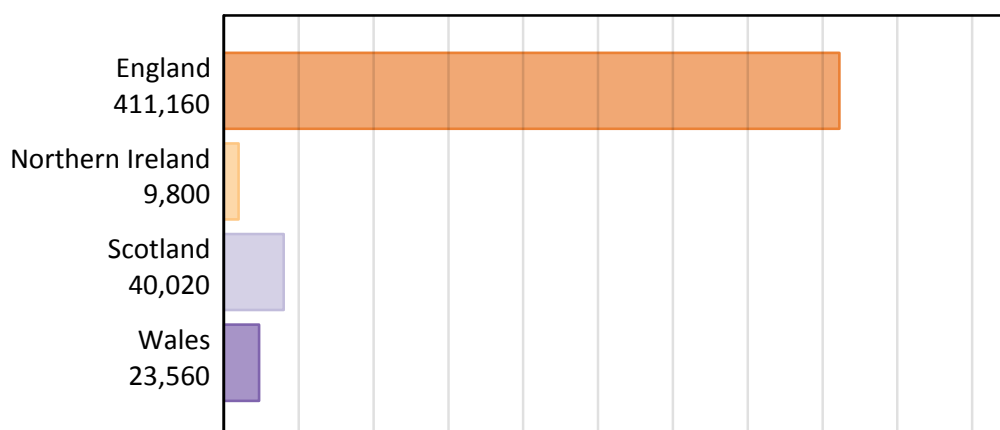
**Analysis at 00:05 on Tuesday 25 August 2015 (12 days after A level results day - No Scot.X1)**  
**BX.1 Placed applicants by country of provider and domicile, 2015 cycle**

Domicile of applicant	Country of provider				
	England	Northern Ireland	Scotland	Wales	UK
England	345,690	570	4,550	10,310	361,120
Northern Ireland	3,860	8,620	1,030	170	13,670
Scotland	1,600	20	27,740	50	29,400
Wales	8,180	10	120	10,700	19,010
EU (excluding UK)	21,620	420	3,950	1,200	27,180
Not EU	30,220	170	2,640	1,130	34,160
All	411,160	9,800	40,020	23,560	484,540

## BX.2 Placed applicants by domicile group

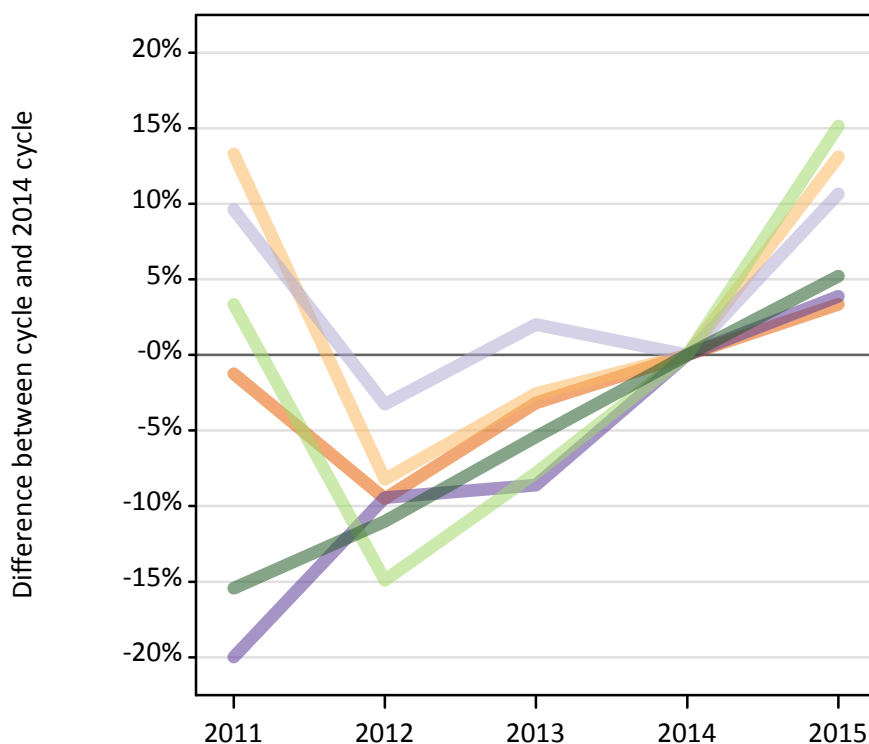
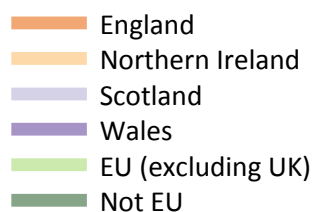


## BX.3 Placed applicants by country of provider



#### BX.4 Placed applicants at 12 days after A level results day: providers in England

Selected applicant domiciles: difference between cycle and 2014 cycle (at 12 days after A level results day)



#### BX.5 Placed applicants at 12 days after A level results day: providers in England

Placed applicants by domicile (at 12 days after A level results day)

Domicile of applicant	2011	2012	2013	2014	2015
England	330,370	302,680	323,920	334,490	345,690
Northern Ireland	3,860	3,130	3,320	3,410	3,860
Scotland	1,580	1,400	1,470	1,440	1,600
Wales	6,300	7,130	7,200	7,880	8,180
EU (excluding UK)	19,400	15,980	17,310	18,770	21,620
Not EU	24,290	25,560	27,170	28,720	30,220

#### BX.6 Placed applicants at 12 days after A level results day: providers in England

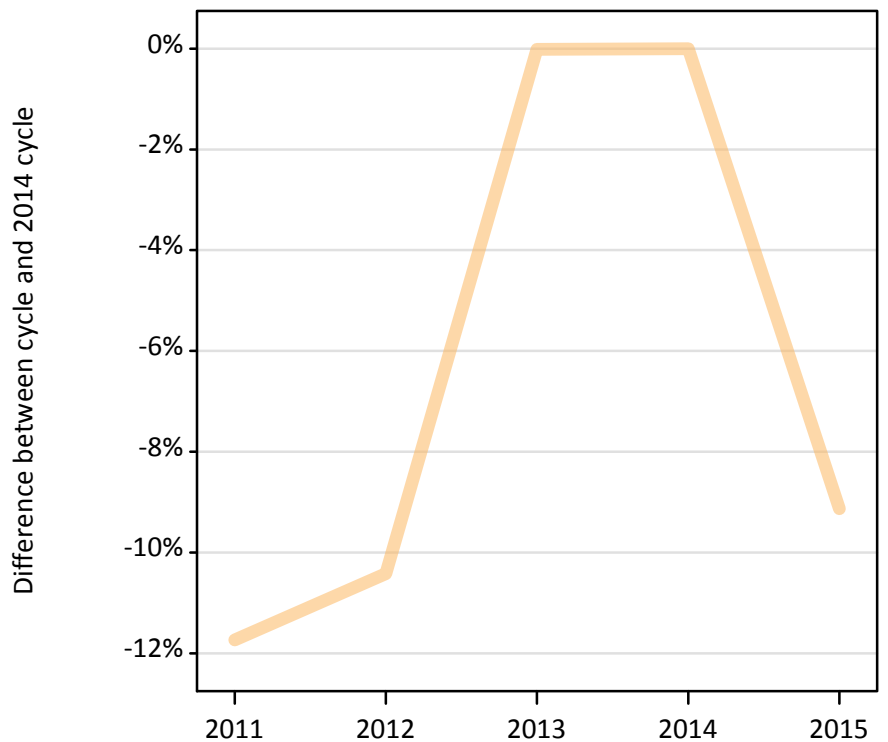
Selected applicant domiciles: difference between cycle and 2014 cycle (at 12 days after A level results day)

Domicile of applicant	2011	2012	2013	2014	2015
England	-1%	-10%	-3%	0%	3%
Northern Ireland	13%	-8%	-3%	0%	13%
Scotland	10%	-3%	2%	0%	11%
Wales	-20%	-9%	-9%	0%	4%
EU (excluding UK)	3%	-15%	-8%	0%	15%
Not EU	-15%	-11%	-5%	0%	5%

### BX.7 Placed applicants at 12 days after A level results day: providers in Northern Ireland

Selected applicant domiciles: difference between cycle and 2014 cycle (at 12 days after A level results day)

— Northern Ireland



### BX.8 Placed applicants at 12 days after A level results day: providers in Northern Ireland

Placed applicants by domicile (at 12 days after A level results day)

Domicile of applicant	2011	2012	2013	2014	2015
England	240	250	260	440	570
Northern Ireland	8,370	8,500	9,480	9,480	8,620
Scotland	20	30	10	20	20
Wales	10	0	10	10	10
EU (excluding UK)	450	430	450	470	420
Not EU	110	170	180	180	170

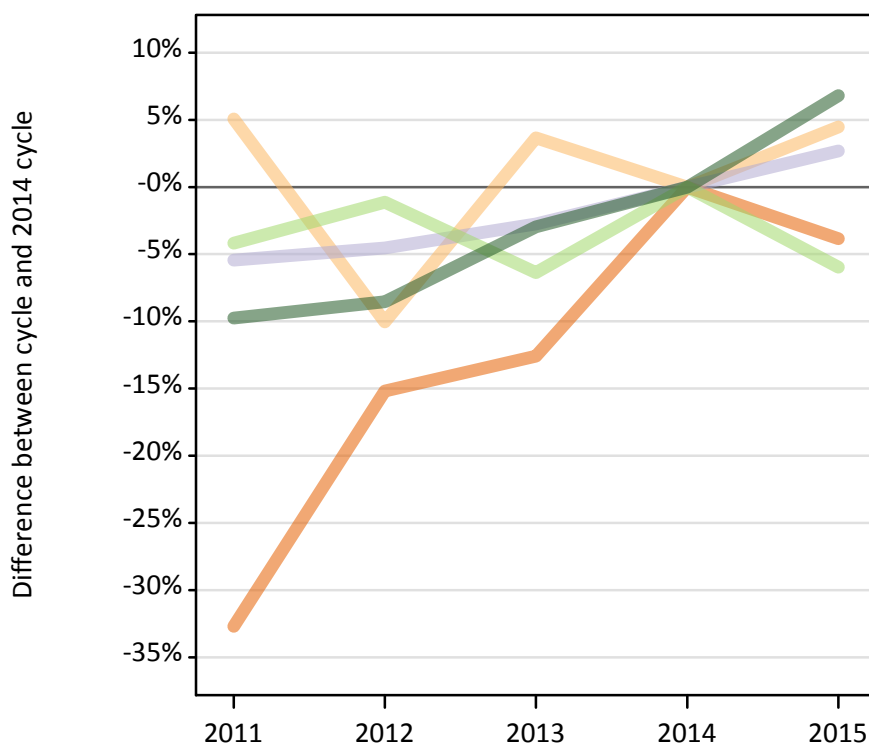
### BX.9 Placed applicants at 12 days after A level results day: providers in Northern Ireland

Selected applicant domiciles: difference between cycle and 2014 cycle (at 12 days after A level results day)

Domicile of applicant	2011	2012	2013	2014	2015
Northern Ireland	-12%	-10%	-0%	0%	-9%

### BX.10 Placed applicants at 12 days after A level results day: providers in Scotland

Selected applicant domiciles: difference between cycle and 2014 cycle (at 12 days after A level results day)



### BX.11 Placed applicants at 12 days after A level results day: providers in Scotland

Placed applicants by domicile (at 12 days after A level results day)

Domicile of applicant	2011	2012	2013	2014	2015
England	3,190	4,010	4,140	4,730	4,550
Northern Ireland	1,040	890	1,020	990	1,030
Scotland	25,550	25,790	26,270	27,010	27,740
Wales	90	110	110	110	120
EU (excluding UK)	4,030	4,160	3,940	4,200	3,950
Not EU	2,230	2,260	2,400	2,470	2,640

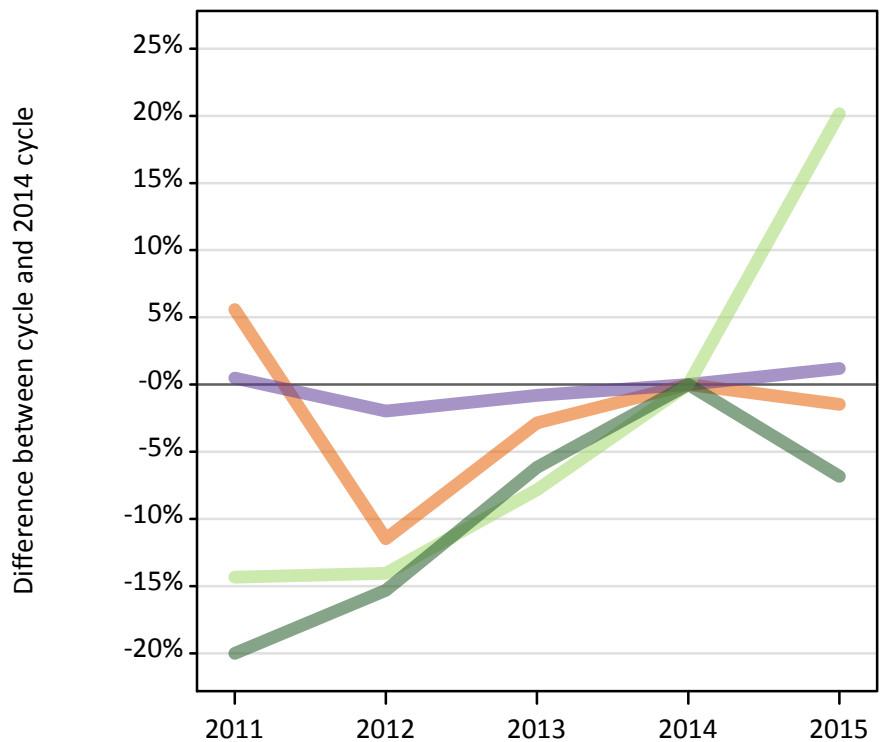
### BX.12 Placed applicants at 12 days after A level results day: providers in Scotland

Selected applicant domiciles: difference between cycle and 2014 cycle (at 12 days after A level results day)

Domicile of applicant	2011	2012	2013	2014	2015
England	-33%	-15%	-13%	0%	-4%
Northern Ireland	5%	-10%	4%	0%	4%
Scotland	-5%	-5%	-3%	0%	3%
EU (excluding UK)	-4%	-1%	-6%	0%	-6%
Not EU	-10%	-9%	-3%	0%	7%

### BX.13 Placed applicants at 12 days after A level results day: providers in Wales

Selected applicant domiciles: difference between cycle and 2014 cycle (at 12 days after A level results day)



### BX.14 Placed applicants at 12 days after A level results day: providers in Wales

Placed applicants by domicile (at 12 days after A level results day)

Domicile of applicant	2011	2012	2013	2014	2015
England	11,050	9,270	10,170	10,470	10,310
Northern Ireland	200	140	160	150	170
Scotland	70	50	60	60	50
Wales	10,630	10,370	10,490	10,580	10,700
EU (excluding UK)	850	860	920	1,000	1,200
Not EU	970	1,030	1,140	1,220	1,130

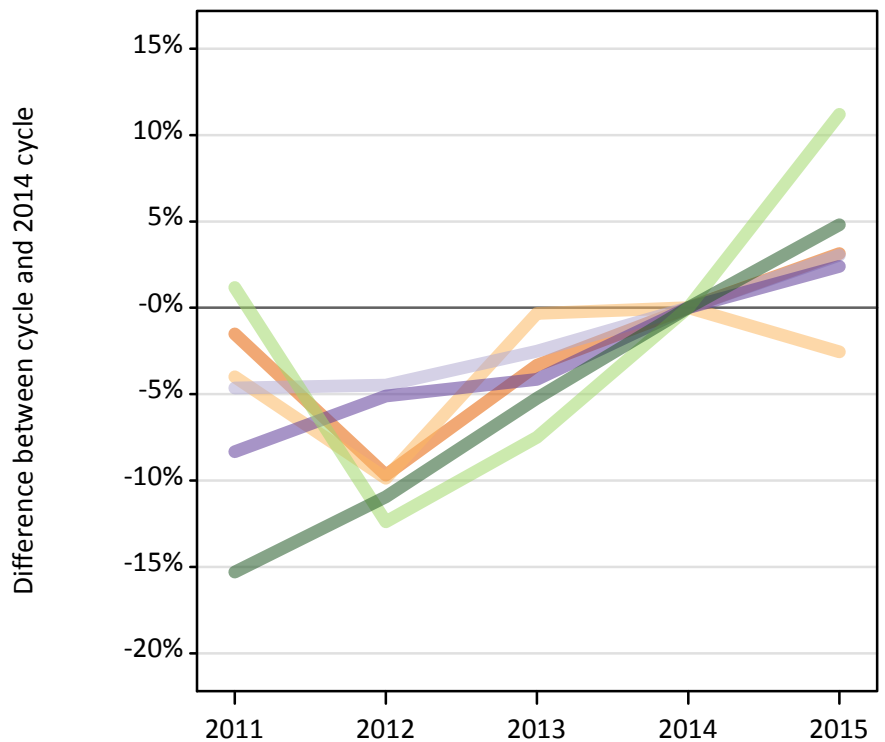
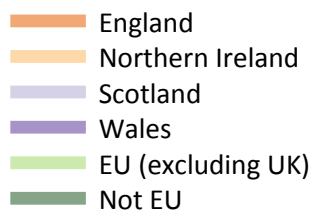
### BX.15 Placed applicants at 12 days after A level results day: providers in Wales

Selected applicant domiciles: difference between cycle and 2014 cycle (at 12 days after A level results day)

Domicile of applicant	2011	2012	2013	2014	2015
England	6%	-11%	-3%	0%	-1%
Wales	0%	-2%	-1%	0%	1%
EU (excluding UK)	-14%	-14%	-8%	0%	20%
Not EU	-20%	-15%	-6%	0%	-7%

### BX.16 Placed applicants at 12 days after A level results day: providers in the UK

Selected applicant domiciles: difference between cycle and 2014 cycle (at 12 days after A level results day)



### BX.17 Placed applicants at 12 days after A level results day: providers in the UK

Placed applicants by domicile (at 12 days after A level results day)

Domicile of applicant	2011	2012	2013	2014	2015
England	344,850	316,210	338,480	350,130	361,120
Northern Ireland	13,470	12,650	13,990	14,030	13,670
Scotland	27,210	27,260	27,820	28,540	29,400
Wales	17,020	17,620	17,800	18,570	19,010
EU (excluding UK)	24,730	21,420	22,610	24,450	27,180
Not EU	27,600	29,020	30,880	32,590	34,160

### BX.18 Placed applicants at 12 days after A level results day: providers in the UK

Selected applicant domiciles: difference between cycle and 2014 cycle (at 12 days after A level results day)

Domicile of applicant	2011	2012	2013	2014	2015
England	-2%	-10%	-3%	0%	3%
Northern Ireland	-4%	-10%	-0%	0%	-3%
Scotland	-5%	-4%	-3%	0%	3%
Wales	-8%	-5%	-4%	0%	2%
EU (excluding UK)	1%	-12%	-7%	0%	11%
Not EU	-15%	-11%	-5%	0%	5%