

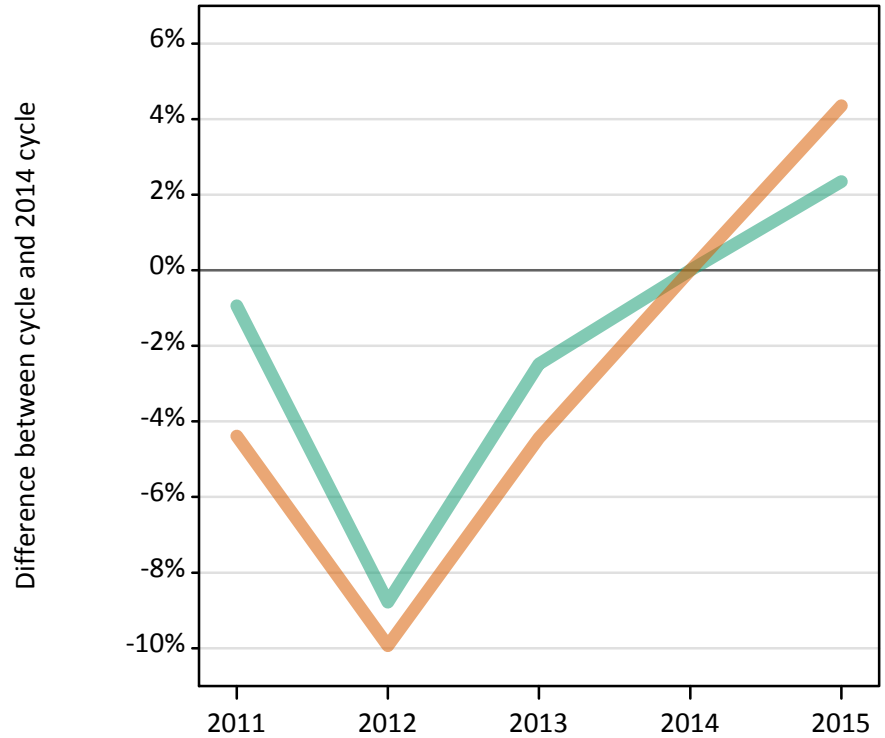
# Daily Clearing Analysis: Sex

Analysis at 00:05 on Tuesday 25 August 2015 (12 days after A level results day - No Scot.X1)

SX.1 Placed applicants from all domiciles by sex: 12 days after A level results day

Placed applicants: change relative to 2014 cycle totals

Men  
Women



SX.2 Placed applicants from all domiciles by sex: 12 days after A level results day

| Applicant Status | Sex   | 2011    | 2012    | 2013    | 2014    | 2015    |
|------------------|-------|---------|---------|---------|---------|---------|
| Placed           | Men   | 204,980 | 188,750 | 201,790 | 206,920 | 211,790 |
|                  | Women | 249,910 | 235,420 | 249,790 | 261,380 | 272,760 |
|                  | All   | 454,890 | 424,170 | 451,580 | 468,300 | 484,540 |

SX.3 Placed applicants from all domiciles by sex: 12 days after A level results day

Placed applicants: change relative to 2014 cycle totals

| Applicant Status | Sex   | 2011 | 2012 | 2013 | 2014 | 2015 |
|------------------|-------|------|------|------|------|------|
| Placed           | Men   | -1%  | -9%  | -2%  | 0%   | 2%   |
|                  | Women | -4%  | -10% | -4%  | 0%   | 4%   |
|                  | All   | -3%  | -9%  | -4%  | 0%   | 3%   |

SX.4 Placed applicants from all domiciles by sex: 12 days after A level results day

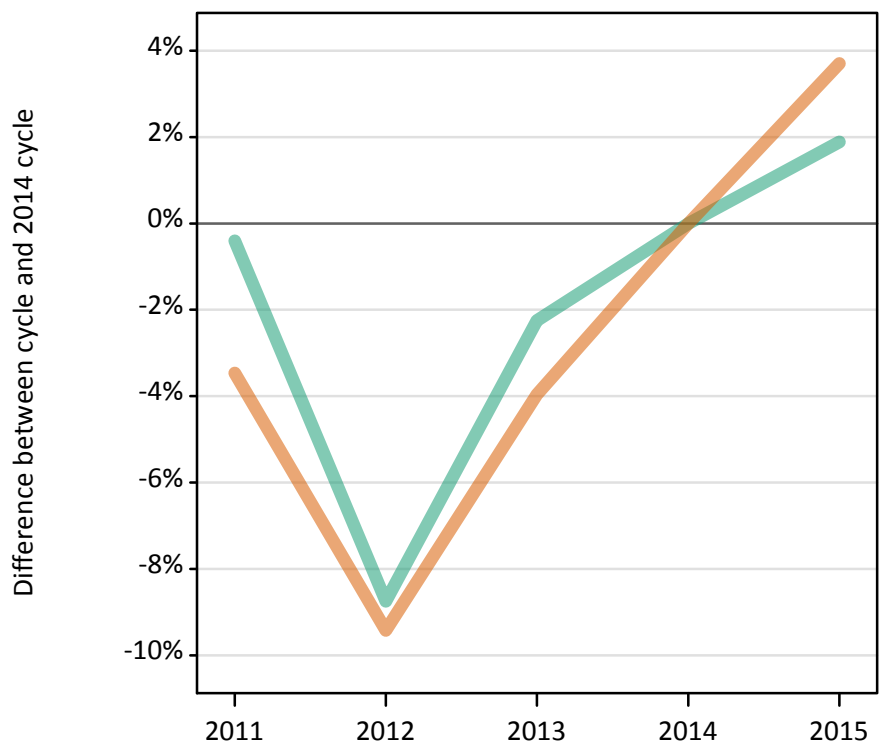
Placed applicants: absolute change relative to 2014 cycle totals

| Applicant Status | Sex   | 2011    | 2012    | 2013    | 2014 | 2015   |
|------------------|-------|---------|---------|---------|------|--------|
| Placed           | Men   | -1,950  | -18,170 | -5,130  | 0    | 4,870  |
|                  | Women | -11,470 | -25,960 | -11,590 | 0    | 11,380 |
|                  | All   | -13,410 | -44,140 | -16,720 | 0    | 16,240 |

### SX.5 Placed applicants from the UK by sex: 12 days after A level results day

Placed applicants: change relative to 2014 cycle totals

Men  
Women



### SX.6 Placed applicants from the UK by sex: 12 days after A level results day

| Applicant Status | Sex   | 2011    | 2012    | 2013    | 2014    | 2015    |
|------------------|-------|---------|---------|---------|---------|---------|
| Placed           | Men   | 180,460 | 165,350 | 177,120 | 181,200 | 184,620 |
|                  | Women | 222,090 | 208,380 | 220,960 | 230,070 | 238,590 |
|                  | All   | 402,550 | 373,730 | 398,080 | 411,270 | 423,210 |

### SX.7 Placed applicants from the UK by sex: 12 days after A level results day

Placed applicants: change relative to 2014 cycle totals

| Applicant Status | Sex   | 2011 | 2012 | 2013 | 2014 | 2015 |
|------------------|-------|------|------|------|------|------|
| Placed           | Men   | -0%  | -9%  | -2%  | 0%   | 2%   |
|                  | Women | -3%  | -9%  | -4%  | 0%   | 4%   |
|                  | All   | -2%  | -9%  | -3%  | 0%   | 3%   |

### SX.8 Placed applicants from the UK by sex: 12 days after A level results day

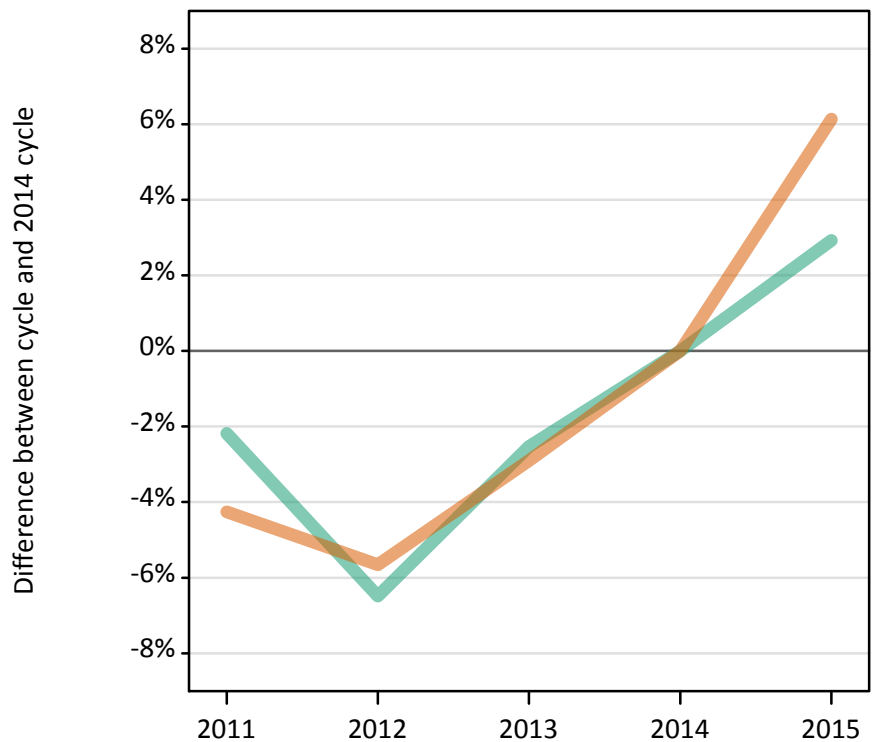
Placed applicants: absolute change relative to 2014 cycle totals

| Applicant Status | Sex   | 2011   | 2012    | 2013    | 2014 | 2015   |
|------------------|-------|--------|---------|---------|------|--------|
| Placed           | Men   | -740   | -15,850 | -4,080  | 0    | 3,420  |
|                  | Women | -7,980 | -21,690 | -9,110  | 0    | 8,520  |
|                  | All   | -8,720 | -37,540 | -13,190 | 0    | 11,940 |

### SX.9 Placed 18 year old applicants from the UK by sex: 12 days after A level results day

Placed 18 year old applicants: change relative to 2014 cycle totals

Men  
Women



### SX.10 Placed 18 year old applicants from the UK by sex: 12 days after A level results day

| Applicant Status | Sex   | 2011    | 2012    | 2013    | 2014    | 2015    |
|------------------|-------|---------|---------|---------|---------|---------|
| Placed           | Men   | 96,630  | 92,380  | 96,290  | 98,790  | 101,680 |
|                  | Women | 117,990 | 116,260 | 119,650 | 123,230 | 130,790 |
|                  | All   | 214,620 | 208,640 | 215,940 | 222,020 | 232,470 |

### SX.11 Placed 18 year old applicants from the UK by sex: 12 days after A level results day

Placed 18 year old applicants: change relative to 2014 cycle totals

| Applicant Status | Sex   | 2011 | 2012 | 2013 | 2014 | 2015 |
|------------------|-------|------|------|------|------|------|
| Placed           | Men   | -2%  | -6%  | -3%  | 0%   | 3%   |
|                  | Women | -4%  | -6%  | -3%  | 0%   | 6%   |
|                  | All   | -3%  | -6%  | -3%  | 0%   | 5%   |

### SX.12 Placed 18 year old applicants from the UK by sex: 12 days after A level results day

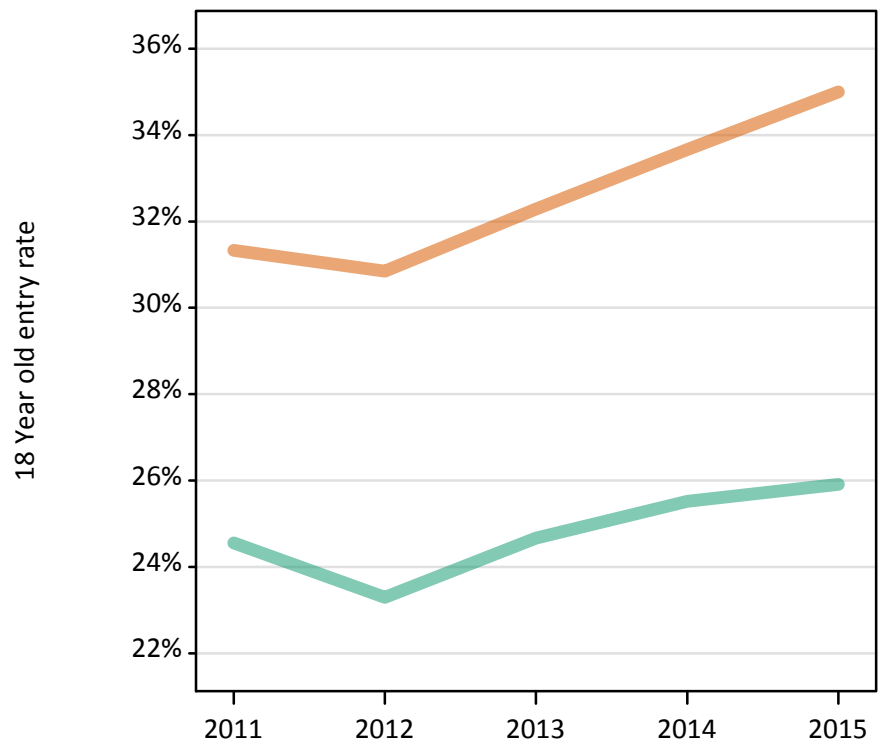
Placed 18 year old applicants: absolute change relative to 2014 cycle totals

| Applicant Status | Sex   | 2011   | 2012    | 2013   | 2014 | 2015   |
|------------------|-------|--------|---------|--------|------|--------|
| Placed           | Men   | -2,160 | -6,410  | -2,500 | 0    | 2,890  |
|                  | Women | -5,240 | -6,970  | -3,580 | 0    | 7,560  |
|                  | All   | -7,400 | -13,380 | -6,080 | 0    | 10,450 |

**SX.13 Placed 18 year old applicants from the UK by sex: 12 days after A level results day**

Placed 18 year old applicants: entry rate

Men  
Women



**SX.14 Placed 18 year old applicants from the UK by sex: 12 days after A level results day**

Placed 18 year old applicants: entry rate

| Applicant Status | Sex   | 2011  | 2012  | 2013  | 2014  | 2015  |
|------------------|-------|-------|-------|-------|-------|-------|
| Placed           | Men   | 24.6% | 23.3% | 24.7% | 25.5% | 25.9% |
|                  | Women | 31.3% | 30.8% | 32.3% | 33.7% | 35.0% |
|                  | All   | 27.9% | 27.0% | 28.4% | 29.5% | 30.3% |

**SX.15 Placed 18 year old applicants from the UK by sex: 12 days after A level results day**

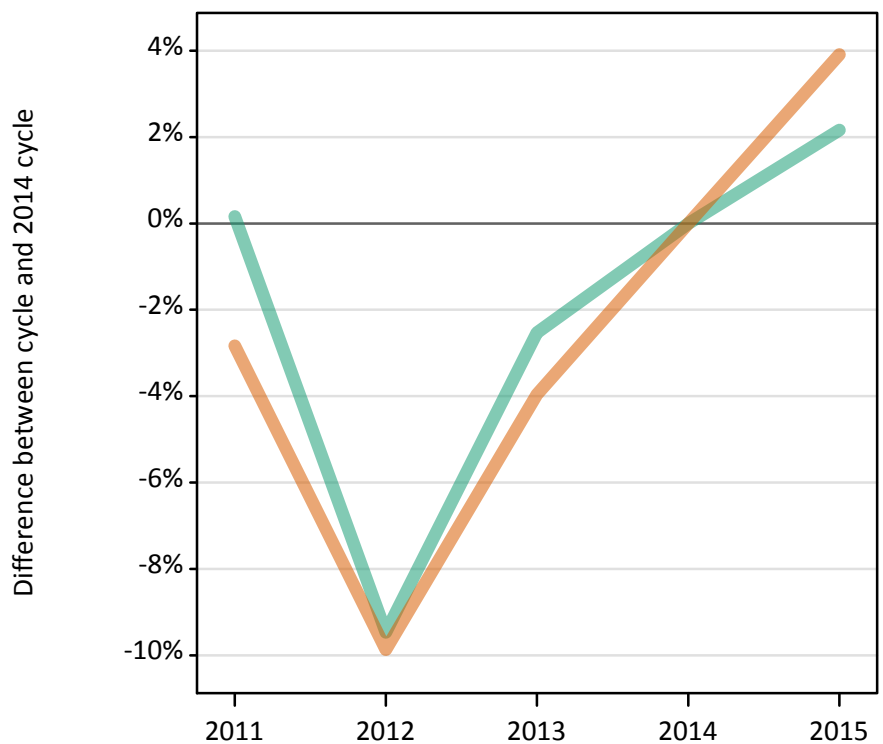
Placed 18 year old applicants: entry rate (indexed to 100 = Men)

| Applicant Status | Sex   | 2011 | 2012 | 2013 | 2014 | 2015 |
|------------------|-------|------|------|------|------|------|
| Placed           | Men   | 100  | 100  | 100  | 100  | 100  |
|                  | Women | 128  | 132  | 131  | 132  | 135  |

### SX.16 Placed applicants from England by sex: 12 days after A level results day

Placed applicants: change relative to 2014 cycle totals

Men  
Women



### SX.17 Placed applicants from England by sex: 12 days after A level results day

| Applicant Status | Sex   | 2011    | 2012    | 2013    | 2014    | 2015    |
|------------------|-------|---------|---------|---------|---------|---------|
| Placed           | Men   | 155,190 | 140,280 | 151,020 | 154,950 | 158,300 |
|                  | Women | 189,650 | 175,930 | 187,460 | 195,180 | 202,820 |
|                  | All   | 344,850 | 316,210 | 338,480 | 350,130 | 361,120 |

### SX.18 Placed applicants from England by sex: 12 days after A level results day

Placed applicants: change relative to 2014 cycle totals

| Applicant Status | Sex   | 2011 | 2012 | 2013 | 2014 | 2015 |
|------------------|-------|------|------|------|------|------|
| Placed           | Men   | 0%   | -9%  | -3%  | 0%   | 2%   |
|                  | Women | -3%  | -10% | -4%  | 0%   | 4%   |
|                  | All   | -2%  | -10% | -3%  | 0%   | 3%   |

### SX.19 Placed applicants from England by sex: 12 days after A level results day

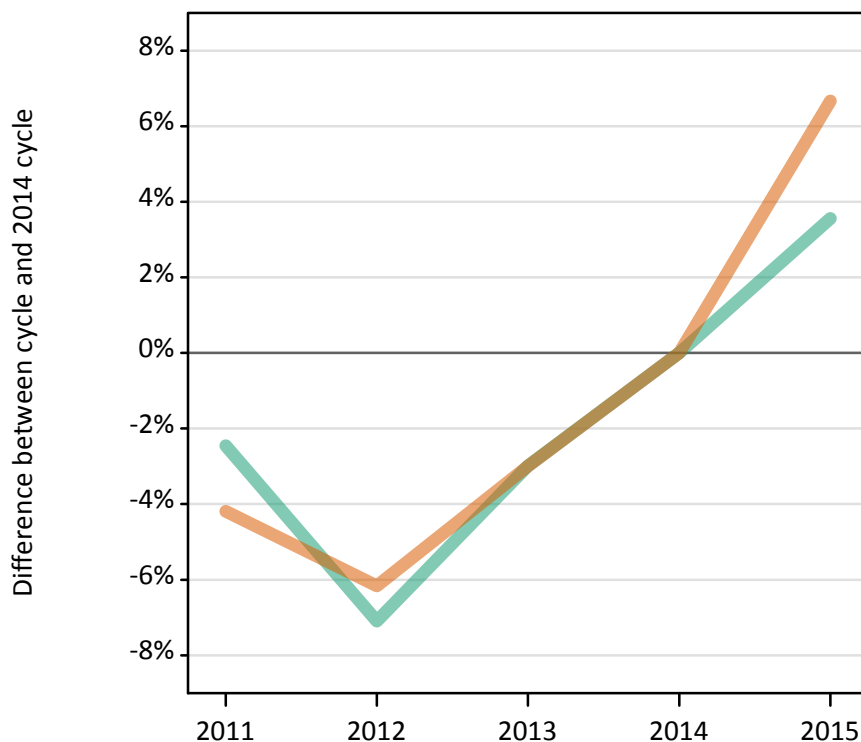
Placed applicants: absolute change relative to 2014 cycle totals

| Applicant Status | Sex   | 2011   | 2012    | 2013    | 2014 | 2015   |
|------------------|-------|--------|---------|---------|------|--------|
| Placed           | Men   | 240    | -14,670 | -3,930  | 0    | 3,350  |
|                  | Women | -5,530 | -19,260 | -7,730  | 0    | 7,630  |
|                  | All   | -5,290 | -33,930 | -11,650 | 0    | 10,980 |

### SX.20 Placed 18 year old applicants from England by sex: 12 days after A level results day

Placed 18 year old applicants: change relative to 2014 cycle totals

Men  
Women



### SX.21 Placed 18 year old applicants from England by sex: 12 days after A level results day

| Applicant Status | Sex   | 2011    | 2012    | 2013    | 2014    | 2015    |
|------------------|-------|---------|---------|---------|---------|---------|
| Placed           | Men   | 82,720  | 78,790  | 82,270  | 84,800  | 87,820  |
|                  | Women | 100,420 | 98,360  | 101,680 | 104,820 | 111,810 |
|                  | All   | 183,140 | 177,140 | 183,950 | 189,620 | 199,630 |

### SX.22 Placed 18 year old applicants from England by sex: 12 days after A level results day

Placed 18 year old applicants: change relative to 2014 cycle totals

| Applicant Status | Sex   | 2011 | 2012 | 2013 | 2014 | 2015 |
|------------------|-------|------|------|------|------|------|
| Placed           | Men   | -2%  | -7%  | -3%  | 0%   | 4%   |
|                  | Women | -4%  | -6%  | -3%  | 0%   | 7%   |
|                  | All   | -3%  | -7%  | -3%  | 0%   | 5%   |

### SX.23 Placed 18 year old applicants from England by sex: 12 days after A level results day

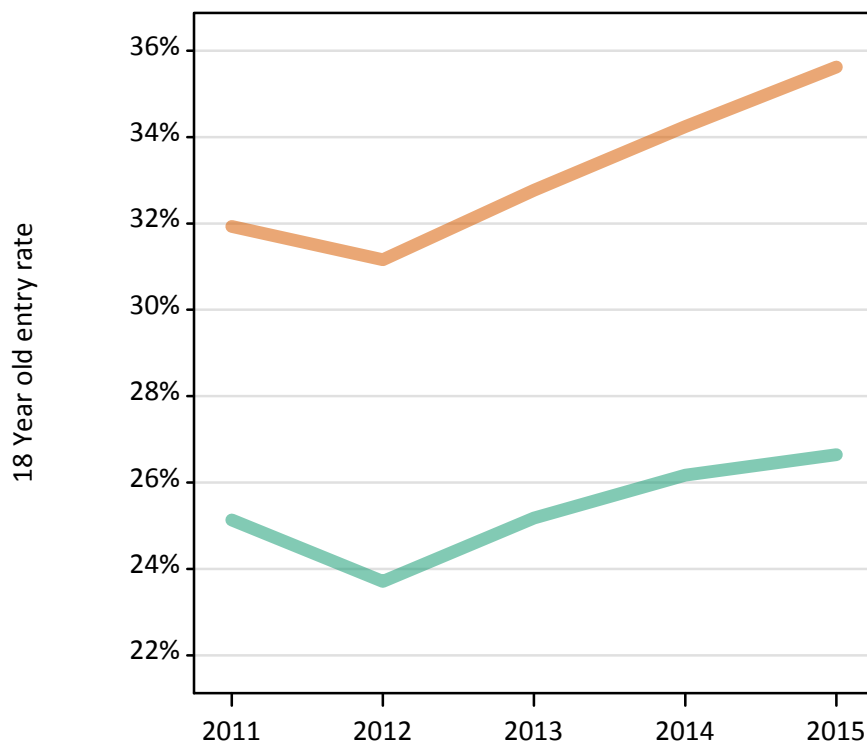
Placed 18 year old applicants: absolute change relative to 2014 cycle totals

| Applicant Status | Sex   | 2011   | 2012    | 2013   | 2014 | 2015   |
|------------------|-------|--------|---------|--------|------|--------|
| Placed           | Men   | -2,080 | -6,020  | -2,530 | 0    | 3,020  |
|                  | Women | -4,400 | -6,460  | -3,140 | 0    | 6,990  |
|                  | All   | -6,480 | -12,480 | -5,670 | 0    | 10,010 |

**SX.24 Placed 18 year old applicants from England by sex: 12 days after A level results day**

Placed 18 year old applicants: entry rate

Men  
Women



**SX.25 Placed 18 year old applicants from England by sex: 12 days after A level results day**

Placed 18 year old applicants: entry rate

| Applicant Status | Sex   | 2011  | 2012  | 2013  | 2014  | 2015  |
|------------------|-------|-------|-------|-------|-------|-------|
| Placed           | Men   | 25.1% | 23.7% | 25.2% | 26.2% | 26.6% |
|                  | Women | 31.9% | 31.2% | 32.8% | 34.2% | 35.6% |
|                  | All   | 28.5% | 27.3% | 28.9% | 30.1% | 31.0% |

**SX.26 Placed 18 year old applicants from England by sex: 12 days after A level results day**

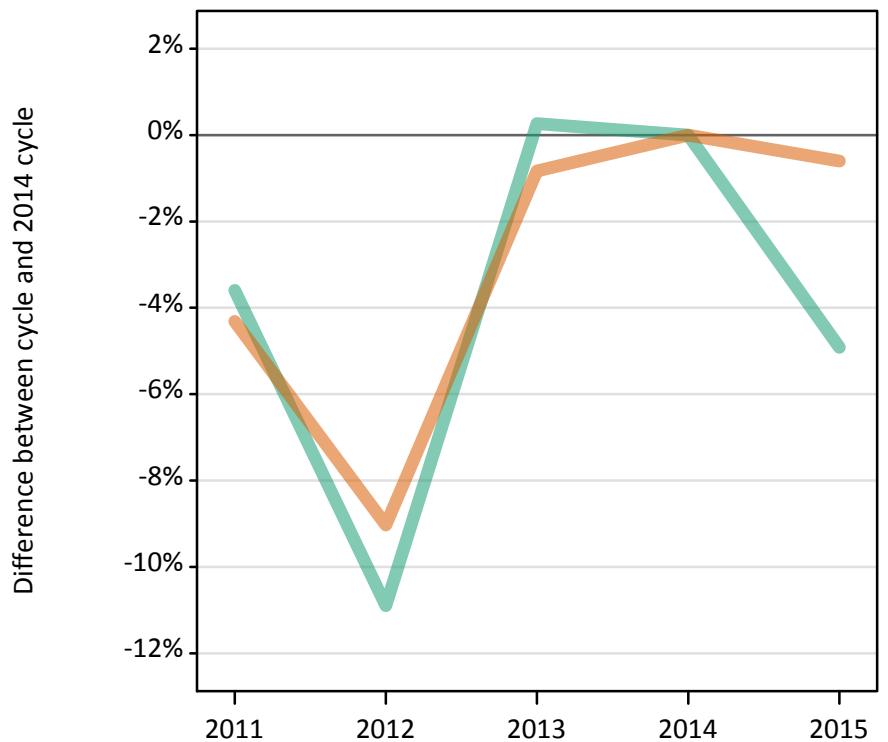
Placed 18 year old applicants: entry rate (indexed to 100 = Men)

| Applicant Status | Sex   | 2011 | 2012 | 2013 | 2014 | 2015 |
|------------------|-------|------|------|------|------|------|
| Placed           | Men   | 100  | 100  | 100  | 100  | 100  |
|                  | Women | 127  | 131  | 130  | 131  | 134  |

### SX.27 Placed applicants from Northern Ireland by sex: 12 days after A level results day

Placed applicants: change relative to 2014 cycle totals

Men  
Women



### SX.28 Placed applicants from Northern Ireland by sex: 12 days after A level results day

| Applicant Status | Sex   | 2011   | 2012   | 2013   | 2014   | 2015   |
|------------------|-------|--------|--------|--------|--------|--------|
| Placed           | Men   | 6,140  | 5,670  | 6,380  | 6,370  | 6,050  |
|                  | Women | 7,340  | 6,970  | 7,600  | 7,670  | 7,620  |
|                  | All   | 13,470 | 12,650 | 13,990 | 14,030 | 13,670 |

### SX.29 Placed applicants from Northern Ireland by sex: 12 days after A level results day

Placed applicants: change relative to 2014 cycle totals

| Applicant Status | Sex   | 2011 | 2012 | 2013 | 2014 | 2015 |
|------------------|-------|------|------|------|------|------|
| Placed           | Men   | -4%  | -11% | 0%   | 0%   | -5%  |
|                  | Women | -4%  | -9%  | -1%  | 0%   | -1%  |
|                  | All   | -4%  | -10% | -0%  | 0%   | -3%  |

### SX.30 Placed applicants from Northern Ireland by sex: 12 days after A level results day

Placed applicants: absolute change relative to 2014 cycle totals

| Applicant Status | Sex   | 2011 | 2012   | 2013 | 2014 | 2015 |
|------------------|-------|------|--------|------|------|------|
| Placed           | Men   | -230 | -690   | 20   | 0    | -310 |
|                  | Women | -330 | -690   | -60  | 0    | -50  |
|                  | All   | -560 | -1,390 | -50  | 0    | -360 |



**SX.31 Placed 18 year old applicants from Northern Ireland by sex: 12 days after A level results day**

Placed 18 year old applicants: change relative to 2014 cycle totals

Men  
Women



**SX.32 Placed 18 year old applicants from Northern Ireland by sex: 12 days after A level results day**

| Applicant Status | Sex   | 2011  | 2012  | 2013  | 2014  | 2015  |
|------------------|-------|-------|-------|-------|-------|-------|
| Placed           | Men   | 3,780 | 3,540 | 3,870 | 3,720 | 3,570 |
|                  | Women | 4,760 | 4,630 | 4,790 | 4,750 | 4,800 |
|                  | All   | 8,550 | 8,170 | 8,660 | 8,470 | 8,370 |

**SX.33 Placed 18 year old applicants from Northern Ireland by sex: 12 days after A level results day**

Placed 18 year old applicants: change relative to 2014 cycle totals

| Applicant Status | Sex   | 2011 | 2012 | 2013 | 2014 | 2015 |
|------------------|-------|------|------|------|------|------|
| Placed           | Men   | 2%   | -5%  | 4%   | 0%   | -4%  |
|                  | Women | 0%   | -3%  | 1%   | 0%   | 1%   |
|                  | All   | 1%   | -4%  | 2%   | 0%   | -1%  |

**SX.34 Placed 18 year old applicants from Northern Ireland by sex: 12 days after A level results day**

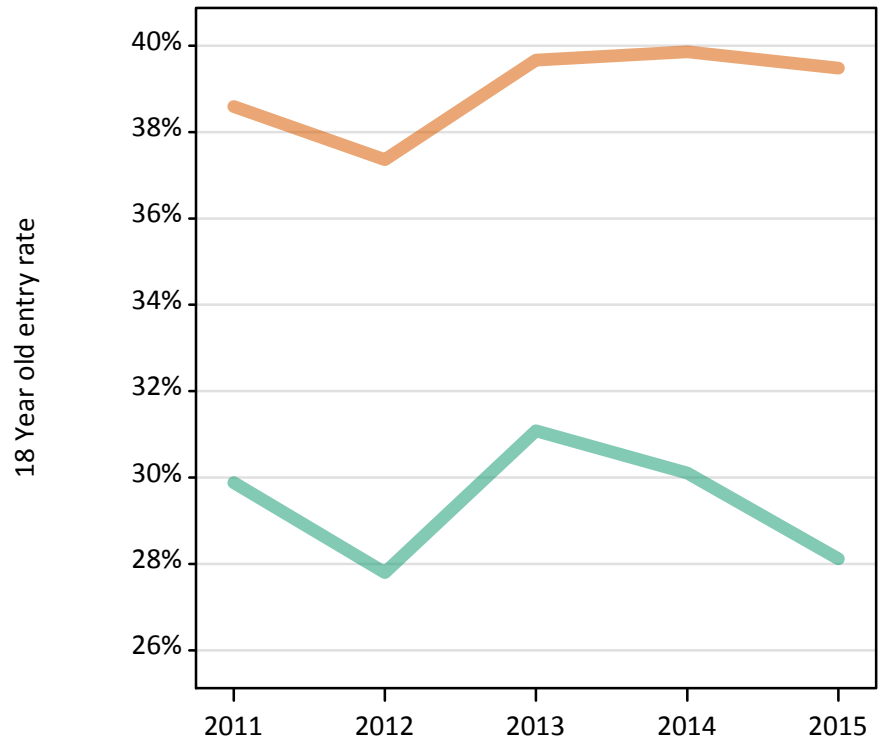
Placed 18 year old applicants: absolute change relative to 2014 cycle totals

| Applicant Status | Sex   | 2011 | 2012 | 2013 | 2014 | 2015 |
|------------------|-------|------|------|------|------|------|
| Placed           | Men   | 70   | -170 | 150  | 0    | -150 |
|                  | Women | 10   | -130 | 40   | 0    | 50   |
|                  | All   | 80   | -300 | 190  | 0    | -100 |

**SX.35 Placed 18 year old applicants from Northern Ireland by sex: 12 days after A level results day**

Placed 18 year old applicants: entry rate

Men  
Women



**SX.36 Placed 18 year old applicants from Northern Ireland by sex: 12 days after A level results day**

Placed 18 year old applicants: entry rate

| Applicant Status | Sex   | 2011  | 2012  | 2013  | 2014  | 2015  |
|------------------|-------|-------|-------|-------|-------|-------|
| Placed           | Men   | 29.9% | 27.8% | 31.1% | 30.1% | 28.1% |
|                  | Women | 38.6% | 37.4% | 39.7% | 39.9% | 39.5% |
|                  | All   | 34.2% | 32.5% | 35.3% | 34.9% | 33.7% |

**SX.37 Placed 18 year old applicants from Northern Ireland by sex: 12 days after A level results day**

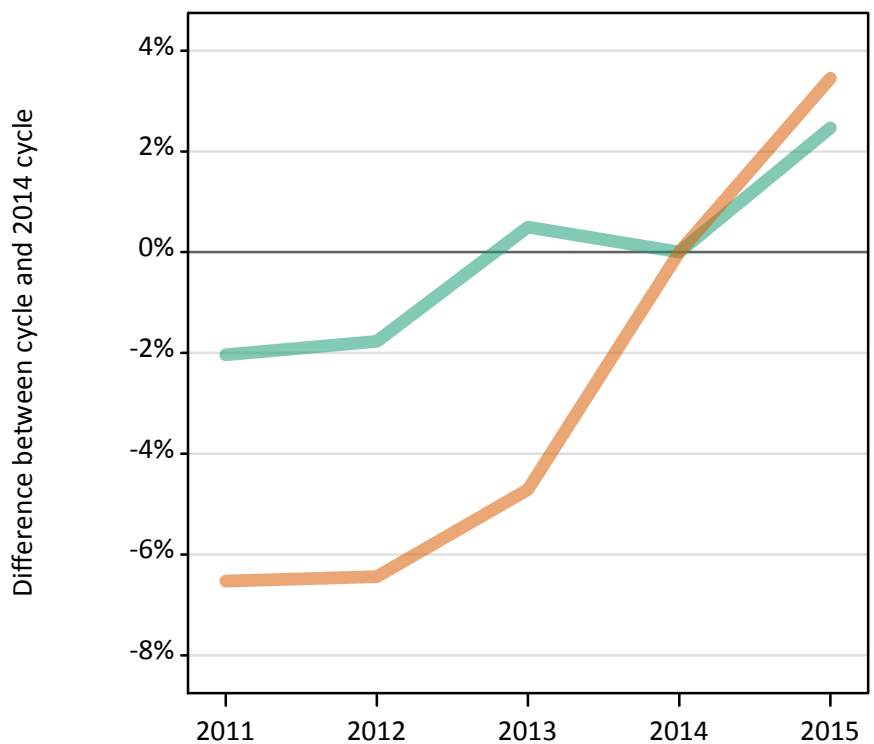
Placed 18 year old applicants: entry rate (indexed to 100 = Men)

| Applicant Status | Sex   | 2011 | 2012 | 2013 | 2014 | 2015 |
|------------------|-------|------|------|------|------|------|
| Placed           | Men   | 100  | 100  | 100  | 100  | 100  |
|                  | Women | 129  | 134  | 128  | 132  | 140  |

### SX.38 Placed applicants from Scotland by sex: 12 days after A level results day

Placed applicants: change relative to 2014 cycle totals

Men  
Women



### SX.39 Placed applicants from Scotland by sex: 12 days after A level results day

| Applicant Status | Sex   | 2011   | 2012   | 2013   | 2014   | 2015   |
|------------------|-------|--------|--------|--------|--------|--------|
| Placed           | Men   | 11,770 | 11,810 | 12,080 | 12,020 | 12,320 |
|                  | Women | 15,440 | 15,460 | 15,740 | 16,520 | 17,090 |
|                  | All   | 27,210 | 27,260 | 27,820 | 28,540 | 29,400 |

### SX.40 Placed applicants from Scotland by sex: 12 days after A level results day

Placed applicants: change relative to 2014 cycle totals

| Applicant Status | Sex   | 2011 | 2012 | 2013 | 2014 | 2015 |
|------------------|-------|------|------|------|------|------|
| Placed           | Men   | -2%  | -2%  | 0%   | 0%   | 2%   |
|                  | Women | -7%  | -6%  | -5%  | 0%   | 3%   |
|                  | All   | -5%  | -4%  | -3%  | 0%   | 3%   |

### SX.41 Placed applicants from Scotland by sex: 12 days after A level results day

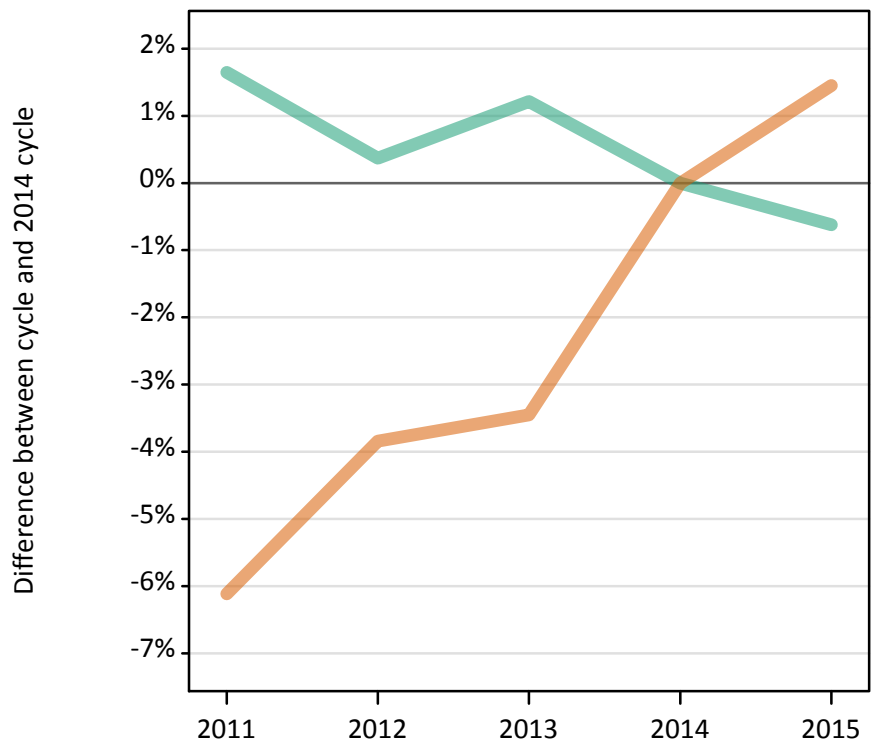
Placed applicants: absolute change relative to 2014 cycle totals

| Applicant Status | Sex   | 2011   | 2012   | 2013 | 2014 | 2015 |
|------------------|-------|--------|--------|------|------|------|
| Placed           | Men   | -250   | -210   | 60   | 0    | 300  |
|                  | Women | -1,080 | -1,060 | -780 | 0    | 570  |
|                  | All   | -1,320 | -1,280 | -720 | 0    | 870  |

### SX.42 Placed 18 year old applicants from Scotland by sex: 12 days after A level results day

Placed 18 year old applicants: change relative to 2014 cycle totals

Men  
Women



### SX.43 Placed 18 year old applicants from Scotland by sex: 12 days after A level results day

| Applicant Status | Sex   | 2011   | 2012   | 2013   | 2014   | 2015   |
|------------------|-------|--------|--------|--------|--------|--------|
| Placed           | Men   | 6,040  | 5,960  | 6,010  | 5,940  | 5,910  |
|                  | Women | 7,510  | 7,690  | 7,720  | 7,990  | 8,110  |
|                  | All   | 13,550 | 13,650 | 13,730 | 13,940 | 14,020 |

### SX.44 Placed 18 year old applicants from Scotland by sex: 12 days after A level results day

Placed 18 year old applicants: change relative to 2014 cycle totals

| Applicant Status | Sex   | 2011 | 2012 | 2013 | 2014 | 2015 |
|------------------|-------|------|------|------|------|------|
| Placed           | Men   | 2%   | 0%   | 1%   | 0%   | -1%  |
|                  | Women | -6%  | -4%  | -3%  | 0%   | 1%   |
|                  | All   | -3%  | -2%  | -1%  | 0%   | 1%   |

### SX.45 Placed 18 year old applicants from Scotland by sex: 12 days after A level results day

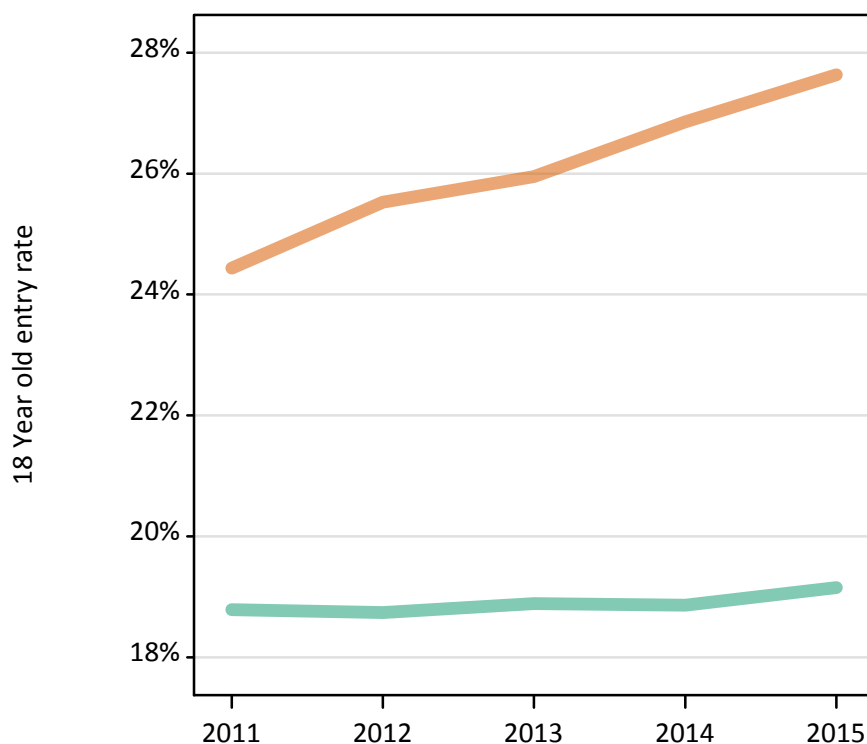
Placed 18 year old applicants: absolute change relative to 2014 cycle totals

| Applicant Status | Sex   | 2011 | 2012 | 2013 | 2014 | 2015 |
|------------------|-------|------|------|------|------|------|
| Placed           | Men   | 100  | 20   | 70   | 0    | -40  |
|                  | Women | -490 | -310 | -280 | 0    | 120  |
|                  | All   | -390 | -290 | -200 | 0    | 80   |

**SX.46 Placed 18 year old applicants from Scotland by sex: 12 days after A level results day**

Placed 18 year old applicants: entry rate

Men  
Women



**SX.47 Placed 18 year old applicants from Scotland by sex: 12 days after A level results day**

Placed 18 year old applicants: entry rate

| Applicant Status | Sex   | 2011  | 2012  | 2013  | 2014  | 2015  |
|------------------|-------|-------|-------|-------|-------|-------|
| Placed           | Men   | 18.8% | 18.7% | 18.9% | 18.9% | 19.2% |
|                  | Women | 24.4% | 25.5% | 26.0% | 26.9% | 27.6% |
|                  | All   | 21.5% | 22.0% | 22.3% | 22.7% | 23.3% |

**SX.48 Placed 18 year old applicants from Scotland by sex: 12 days after A level results day**

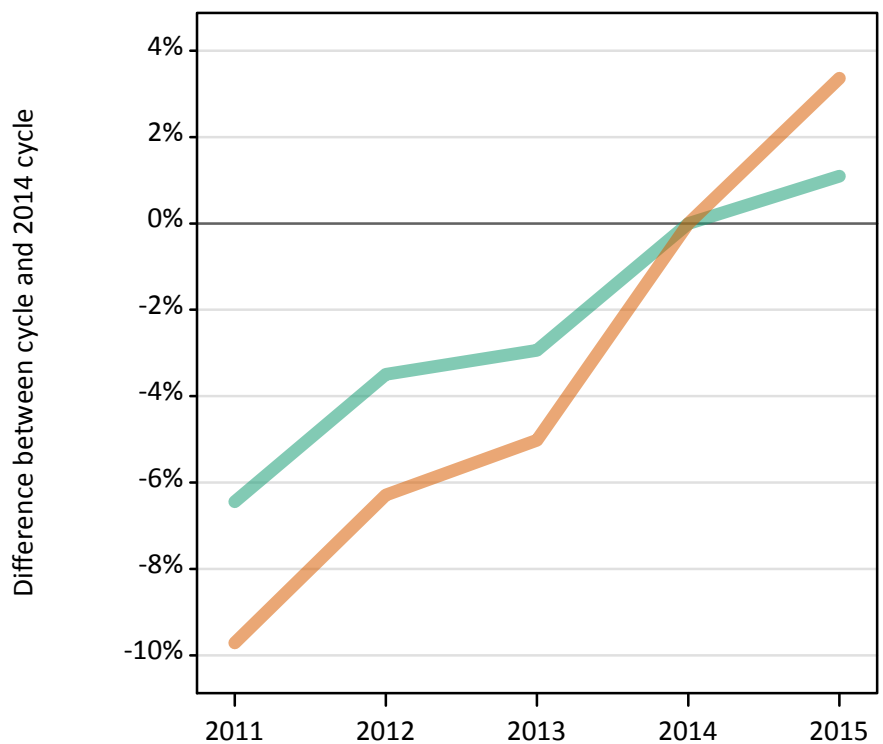
Placed 18 year old applicants: entry rate (indexed to 100 = Men)

| Applicant Status | Sex   | 2011 | 2012 | 2013 | 2014 | 2015 |
|------------------|-------|------|------|------|------|------|
| Placed           | Men   | 100  | 100  | 100  | 100  | 100  |
|                  | Women | 130  | 136  | 137  | 142  | 144  |

### SX.49 Placed applicants from Wales by sex: 12 days after A level results day

Placed applicants: change relative to 2014 cycle totals

Men  
Women



### SX.50 Placed applicants from Wales by sex: 12 days after A level results day

| Applicant Status | Sex   | 2011   | 2012   | 2013   | 2014   | 2015   |
|------------------|-------|--------|--------|--------|--------|--------|
| Placed           | Men   | 7,360  | 7,590  | 7,640  | 7,870  | 7,950  |
|                  | Women | 9,660  | 10,030 | 10,160 | 10,700 | 11,060 |
|                  | All   | 17,020 | 17,620 | 17,800 | 18,570 | 19,010 |

### SX.51 Placed applicants from Wales by sex: 12 days after A level results day

Placed applicants: change relative to 2014 cycle totals

| Applicant Status | Sex   | 2011 | 2012 | 2013 | 2014 | 2015 |
|------------------|-------|------|------|------|------|------|
| Placed           | Men   | -6%  | -3%  | -3%  | 0%   | 1%   |
|                  | Women | -10% | -6%  | -5%  | 0%   | 3%   |
|                  | All   | -8%  | -5%  | -4%  | 0%   | 2%   |

### SX.52 Placed applicants from Wales by sex: 12 days after A level results day

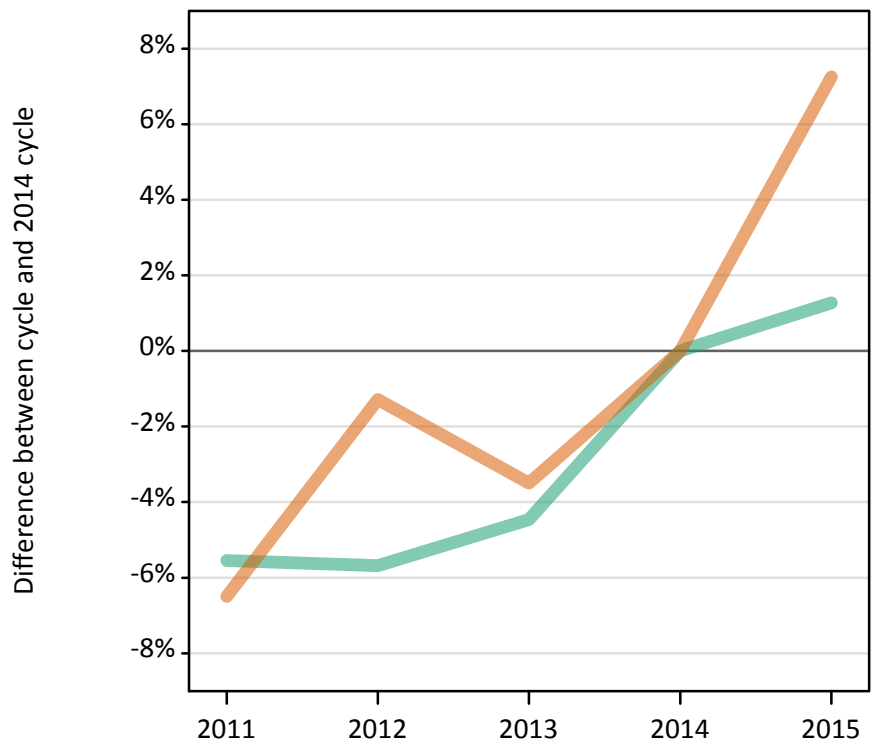
Placed applicants: absolute change relative to 2014 cycle totals

| Applicant Status | Sex   | 2011   | 2012 | 2013 | 2014 | 2015 |
|------------------|-------|--------|------|------|------|------|
| Placed           | Men   | -510   | -280 | -230 | 0    | 90   |
|                  | Women | -1,040 | -670 | -540 | 0    | 360  |
|                  | All   | -1,550 | -950 | -770 | 0    | 450  |

### SX.53 Placed 18 year old applicants from Wales by sex: 12 days after A level results day

Placed 18 year old applicants: change relative to 2014 cycle totals

Men  
Women



### SX.54 Placed 18 year old applicants from Wales by sex: 12 days after A level results day

| Applicant Status | Sex   | 2011  | 2012  | 2013  | 2014  | 2015   |
|------------------|-------|-------|-------|-------|-------|--------|
| Placed           | Men   | 4,090 | 4,080 | 4,140 | 4,330 | 4,380  |
|                  | Women | 5,300 | 5,590 | 5,470 | 5,660 | 6,080  |
|                  | All   | 9,380 | 9,670 | 9,600 | 9,990 | 10,460 |

### SX.55 Placed 18 year old applicants from Wales by sex: 12 days after A level results day

Placed 18 year old applicants: change relative to 2014 cycle totals

| Applicant Status | Sex   | 2011 | 2012 | 2013 | 2014 | 2015 |
|------------------|-------|------|------|------|------|------|
| Placed           | Men   | -6%  | -6%  | -4%  | 0%   | 1%   |
|                  | Women | -6%  | -1%  | -3%  | 0%   | 7%   |
|                  | All   | -6%  | -3%  | -4%  | 0%   | 5%   |

### SX.56 Placed 18 year old applicants from Wales by sex: 12 days after A level results day

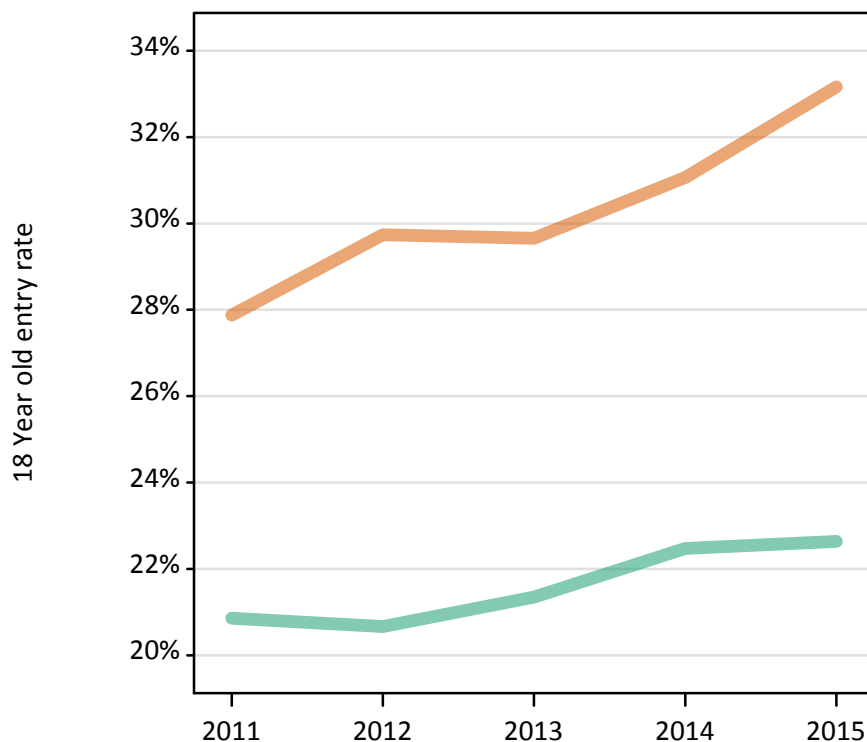
Placed 18 year old applicants: absolute change relative to 2014 cycle totals

| Applicant Status | Sex   | 2011 | 2012 | 2013 | 2014 | 2015 |
|------------------|-------|------|------|------|------|------|
| Placed           | Men   | -240 | -250 | -190 | 0    | 60   |
|                  | Women | -370 | -70  | -200 | 0    | 410  |
|                  | All   | -610 | -320 | -390 | 0    | 470  |

**SX.57 Placed 18 year old applicants from Wales by sex: 12 days after A level results day**

Placed 18 year old applicants: entry rate

Men  
Women



**SX.58 Placed 18 year old applicants from Wales by sex: 12 days after A level results day**

Placed 18 year old applicants: entry rate

| Applicant Status | Sex   | 2011  | 2012  | 2013  | 2014  | 2015  |
|------------------|-------|-------|-------|-------|-------|-------|
| Placed           | Men   | 20.9% | 20.7% | 21.3% | 22.5% | 22.6% |
|                  | Women | 27.9% | 29.7% | 29.7% | 31.1% | 33.2% |
|                  | All   | 24.3% | 25.1% | 25.4% | 26.6% | 27.8% |

**SX.59 Placed 18 year old applicants from Wales by sex: 12 days after A level results day**

Placed 18 year old applicants: entry rate (indexed to 100 = Men)

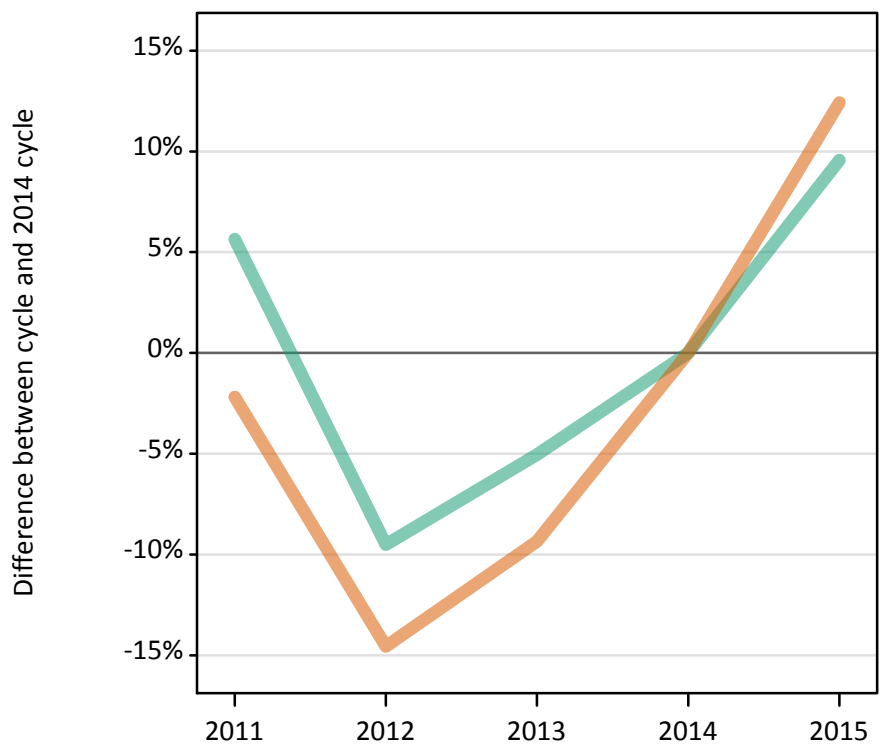
| Applicant Status | Sex   | 2011 | 2012 | 2013 | 2014 | 2015 |
|------------------|-------|------|------|------|------|------|
| Placed           | Men   | 100  | 100  | 100  | 100  | 100  |
|                  | Women | 134  | 144  | 139  | 138  | 147  |



### SX.60 Placed applicants from the EU (excluding the UK) by sex: 12 days after A level results day

Placed applicants: change relative to 2014 cycle totals

Men  
Women



### SX.61 Placed applicants from the EU (excluding the UK) by sex: 12 days after A level results day

| Applicant Status | Sex   | 2011   | 2012   | 2013   | 2014   | 2015   |
|------------------|-------|--------|--------|--------|--------|--------|
| Placed           | Men   | 11,090 | 9,500  | 9,970  | 10,500 | 11,500 |
|                  | Women | 13,640 | 11,920 | 12,640 | 13,950 | 15,680 |
|                  | All   | 24,730 | 21,420 | 22,610 | 24,450 | 27,180 |

### SX.62 Placed applicants from the EU (excluding the UK) by sex: 12 days after A level results day

Placed applicants: change relative to 2014 cycle totals

| Applicant Status | Sex   | 2011 | 2012 | 2013 | 2014 | 2015 |
|------------------|-------|------|------|------|------|------|
| Placed           | Men   | 6%   | -10% | -5%  | 0%   | 10%  |
|                  | Women | -2%  | -15% | -9%  | 0%   | 12%  |
|                  | All   | 1%   | -12% | -7%  | 0%   | 11%  |

### SX.63 Placed applicants from the EU (excluding the UK) by sex: 12 days after A level results day

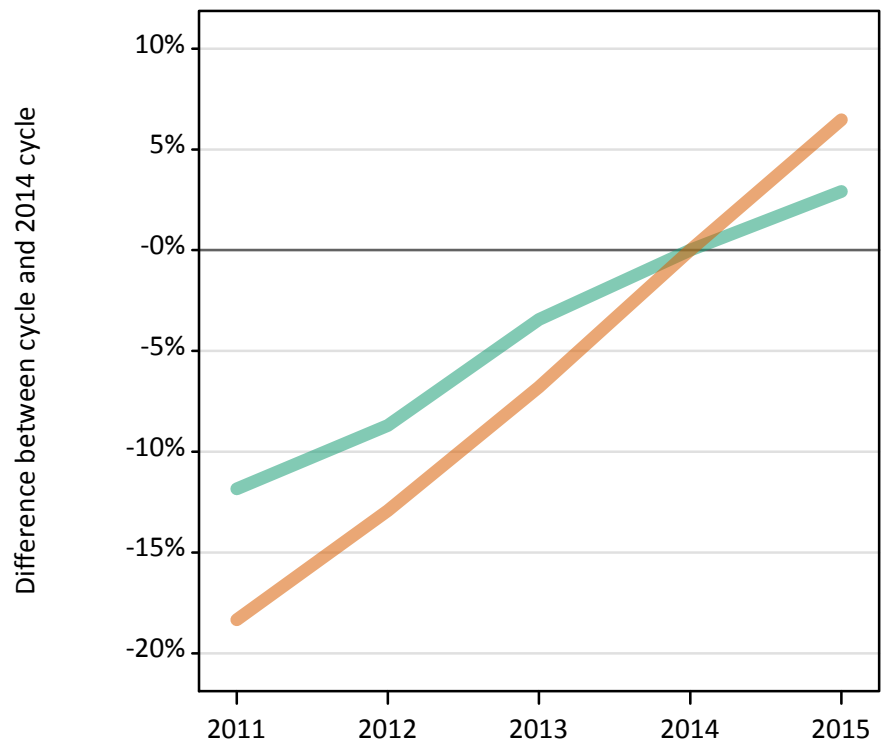
Placed applicants: absolute change relative to 2014 cycle totals

| Applicant Status | Sex   | 2011 | 2012   | 2013   | 2014 | 2015  |
|------------------|-------|------|--------|--------|------|-------|
| Placed           | Men   | 590  | -1,000 | -530   | 0    | 1,000 |
|                  | Women | -310 | -2,030 | -1,300 | 0    | 1,730 |
|                  | All   | 290  | -3,030 | -1,830 | 0    | 2,740 |

### SX.64 Placed applicants from overseas (not EU) by sex: 12 days after A level results day

Placed applicants: change relative to 2014 cycle totals

Men  
Women



### SX.65 Placed applicants from overseas (not EU) by sex: 12 days after A level results day

| Applicant Status | Sex   | 2011   | 2012   | 2013   | 2014   | 2015   |
|------------------|-------|--------|--------|--------|--------|--------|
| Placed           | Men   | 13,420 | 13,900 | 14,700 | 15,220 | 15,670 |
|                  | Women | 14,180 | 15,120 | 16,180 | 17,360 | 18,490 |
|                  | All   | 27,600 | 29,020 | 30,880 | 32,590 | 34,160 |

### SX.66 Placed applicants from overseas (not EU) by sex: 12 days after A level results day

Placed applicants: change relative to 2014 cycle totals

| Applicant Status | Sex   | 2011 | 2012 | 2013 | 2014 | 2015 |
|------------------|-------|------|------|------|------|------|
| Placed           | Men   | -12% | -9%  | -3%  | 0%   | 3%   |
|                  | Women | -18% | -13% | -7%  | 0%   | 6%   |
|                  | All   | -15% | -11% | -5%  | 0%   | 5%   |

### SX.67 Placed applicants from overseas (not EU) by sex: 12 days after A level results day

Placed applicants: absolute change relative to 2014 cycle totals

| Applicant Status | Sex   | 2011   | 2012   | 2013   | 2014 | 2015  |
|------------------|-------|--------|--------|--------|------|-------|
| Placed           | Men   | -1,800 | -1,330 | -520   | 0    | 440   |
|                  | Women | -3,180 | -2,240 | -1,180 | 0    | 1,120 |
|                  | All   | -4,990 | -3,570 | -1,700 | 0    | 1,570 |