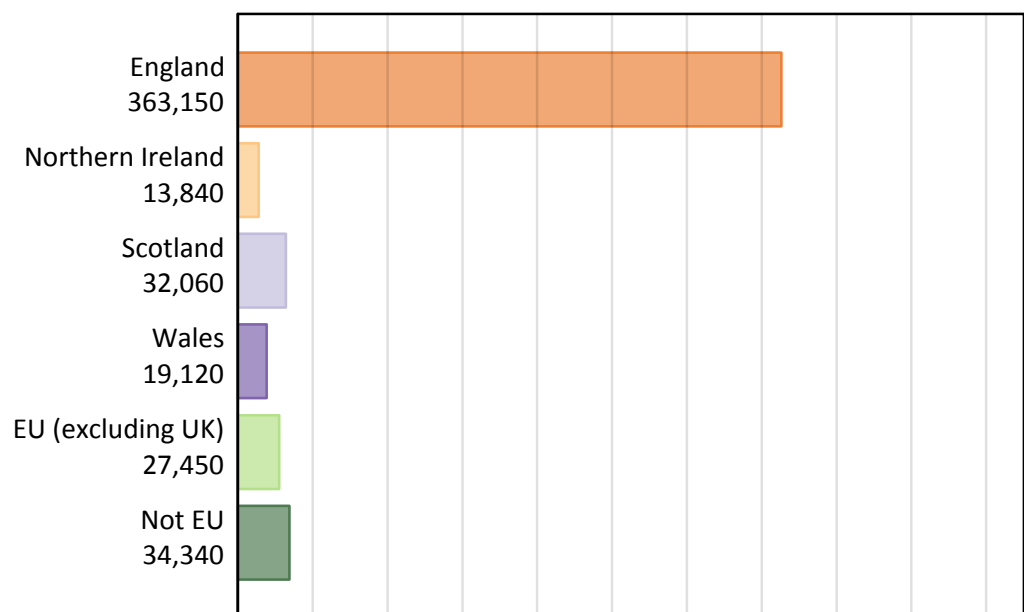


Analysis at 00:05 on Wednesday 26 August 2015 (13 days after A level results day)

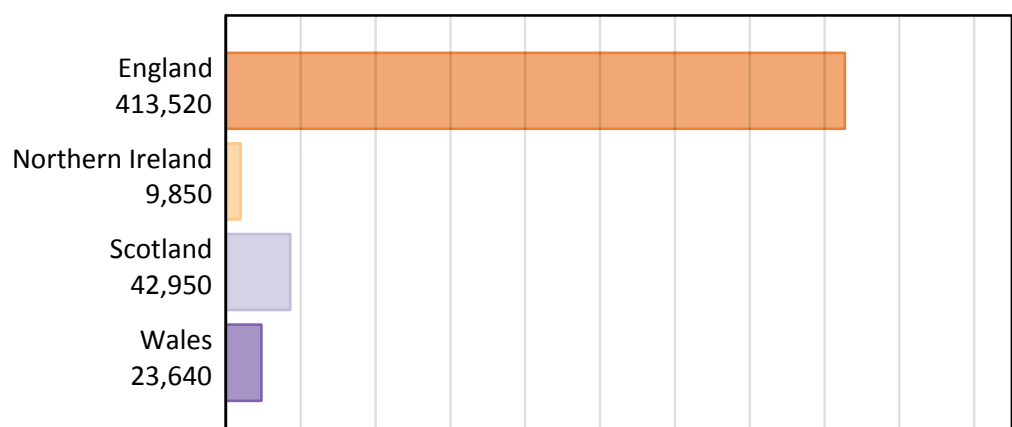
## B.1 Placed applicants by country of provider and domicile, 2015 cycle

Domicile of applicant	Country of provider				
	England	Northern Ireland	Scotland	Wales	UK
England	347,660	570	4,590	10,330	363,150
Northern Ireland	3,890	8,680	1,100	170	13,840
Scotland	1,600	20	30,390	50	32,060
Wales	8,230	10	120	10,770	19,120
EU (excluding UK)	21,770	410	4,080	1,200	27,450
Not EU	30,370	170	2,680	1,140	34,340
All	413,520	9,850	42,950	23,640	489,960

## B.2 Placed applicants by domicile group

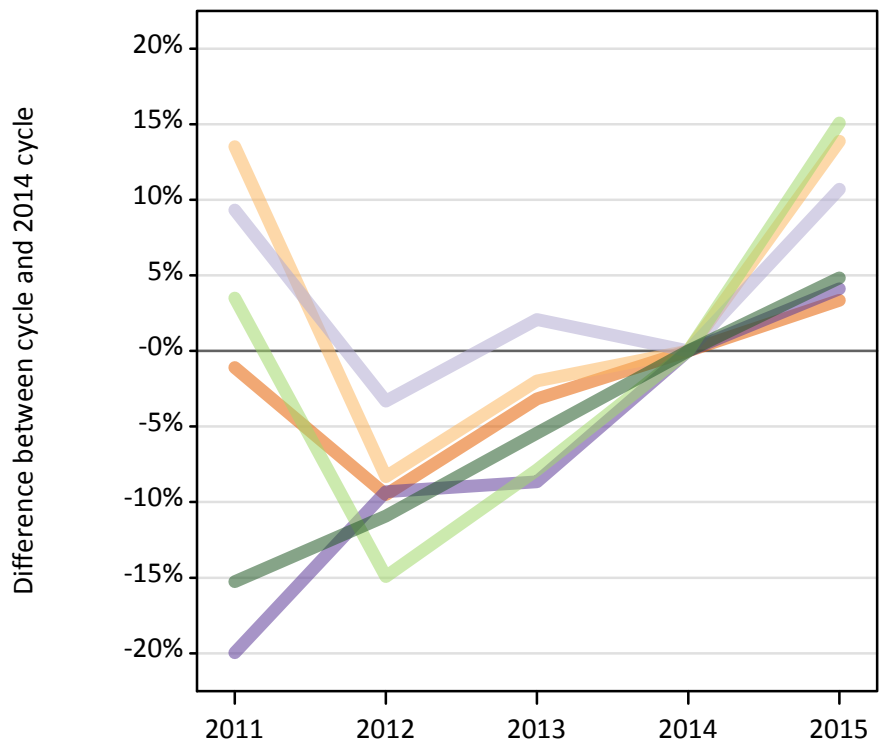
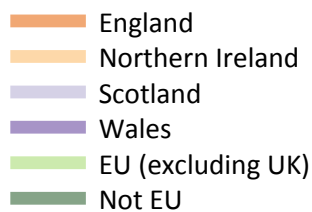


## B.3 Placed applicants by country of provider



#### B.4 Placed applicants at 13 days after A level results day: providers in England

Selected applicant domiciles: difference between cycle and 2014 cycle (at 13 days after A level results day)



#### B.5 Placed applicants at 13 days after A level results day: providers in England

Placed applicants by domicile (at 13 days after A level results day)

Domicile of applicant	2011	2012	2013	2014	2015
England	332,750	304,460	325,750	336,400	347,660
Northern Ireland	3,880	3,130	3,350	3,420	3,890
Scotland	1,580	1,400	1,480	1,450	1,600
Wales	6,320	7,170	7,220	7,900	8,230
EU (excluding UK)	19,580	16,090	17,430	18,920	21,770
Not EU	24,540	25,800	27,390	28,970	30,370

#### B.6 Placed applicants at 13 days after A level results day: providers in England

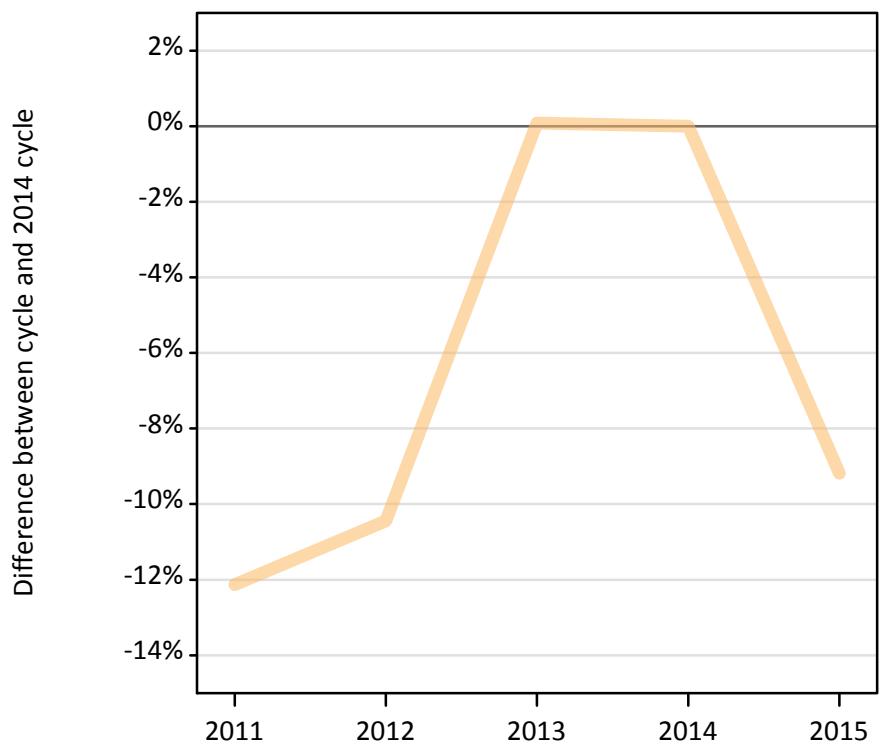
Selected applicant domiciles: difference between cycle and 2014 cycle (at 13 days after A level results day)

Domicile of applicant	2011	2012	2013	2014	2015
England	-1%	-9%	-3%	0%	3%
Northern Ireland	14%	-8%	-2%	0%	14%
Scotland	9%	-3%	2%	0%	11%
Wales	-20%	-9%	-9%	0%	4%
EU (excluding UK)	4%	-15%	-8%	0%	15%
Not EU	-15%	-11%	-5%	0%	5%

### B.7 Placed applicants at 13 days after A level results day: providers in Northern Ireland

Selected applicant domiciles: difference between cycle and 2014 cycle (at 13 days after A level results day)

— Northern Ireland



### B.8 Placed applicants at 13 days after A level results day: providers in Northern Ireland

Placed applicants by domicile (at 13 days after A level results day)

Domicile of applicant	2011	2012	2013	2014	2015
England	240	250	260	440	570
Northern Ireland	8,390	8,550	9,560	9,550	8,680
Scotland	20	30	10	20	20
Wales	10	0	10	10	10
EU (excluding UK)	440	420	450	470	410
Not EU	110	170	180	180	170

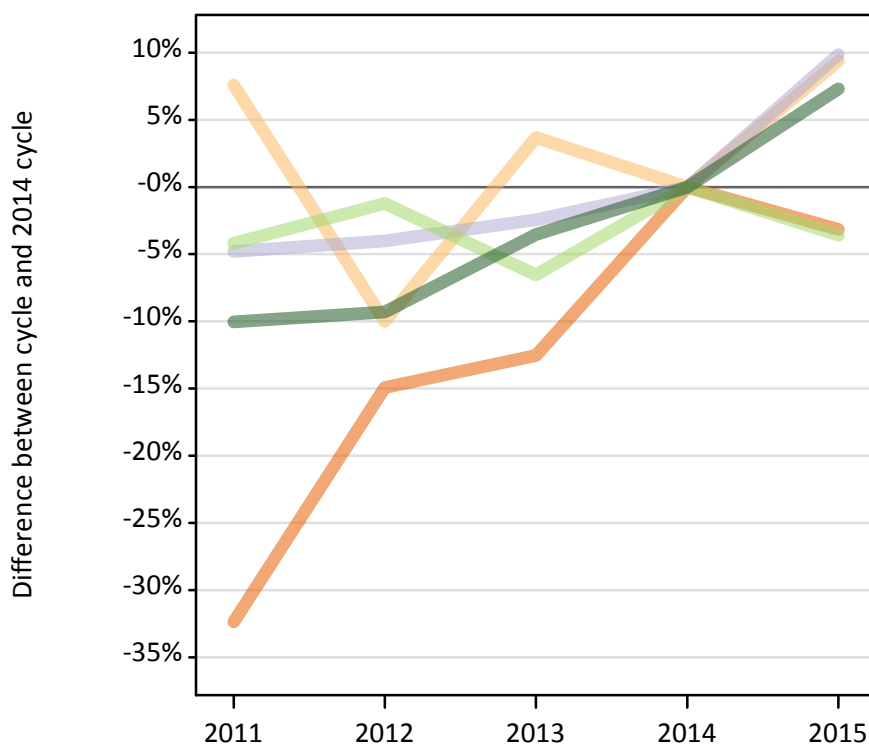
### B.9 Placed applicants at 13 days after A level results day: providers in Northern Ireland

Selected applicant domiciles: difference between cycle and 2014 cycle (at 13 days after A level results day)

Domicile of applicant	2011	2012	2013	2014	2015
Northern Ireland	-12%	-10%	0%	0%	-9%

### B.10 Placed applicants at 13 days after A level results day: providers in Scotland

Selected applicant domiciles: difference between cycle and 2014 cycle (at 13 days after A level results day)



### B.11 Placed applicants at 13 days after A level results day: providers in Scotland

Placed applicants by domicile (at 13 days after A level results day)

Domicile of applicant	2011	2012	2013	2014	2015
England	3,210	4,030	4,150	4,740	4,590
Northern Ireland	1,080	900	1,040	1,000	1,100
Scotland	26,340	26,550	26,990	27,670	30,390
Wales	90	120	110	110	120
EU (excluding UK)	4,050	4,180	3,950	4,230	4,080
Not EU	2,240	2,260	2,410	2,490	2,680

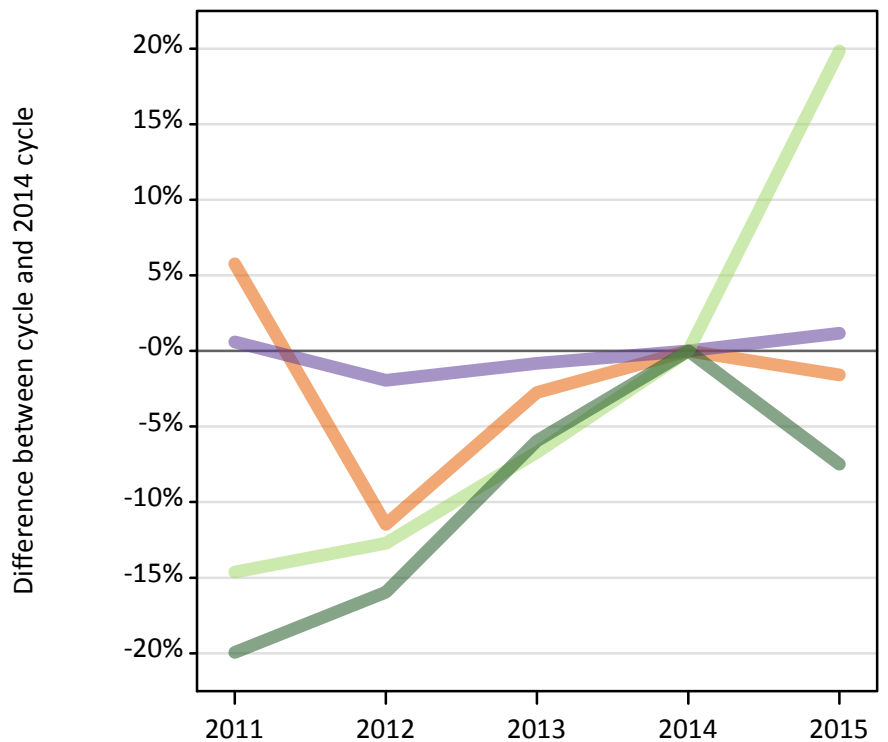
### B.12 Placed applicants at 13 days after A level results day: providers in Scotland

Selected applicant domiciles: difference between cycle and 2014 cycle (at 13 days after A level results day)

Domicile of applicant	2011	2012	2013	2014	2015
England	-32%	-15%	-13%	0%	-3%
Northern Ireland	8%	-10%	4%	0%	9%
Scotland	-5%	-4%	-2%	0%	10%
EU (excluding UK)	-4%	-1%	-7%	0%	-4%
Not EU	-10%	-9%	-4%	0%	7%

### B.13 Placed applicants at 13 days after A level results day: providers in Wales

Selected applicant domiciles: difference between cycle and 2014 cycle (at 13 days after A level results day)



### B.14 Placed applicants at 13 days after A level results day: providers in Wales

Placed applicants by domicile (at 13 days after A level results day)

Domicile of applicant	2011	2012	2013	2014	2015
England	11,100	9,290	10,210	10,490	10,330
Northern Ireland	200	140	160	150	170
Scotland	70	50	60	60	50
Wales	10,700	10,430	10,550	10,640	10,770
EU (excluding UK)	850	870	930	1,000	1,200
Not EU	980	1,030	1,160	1,230	1,140

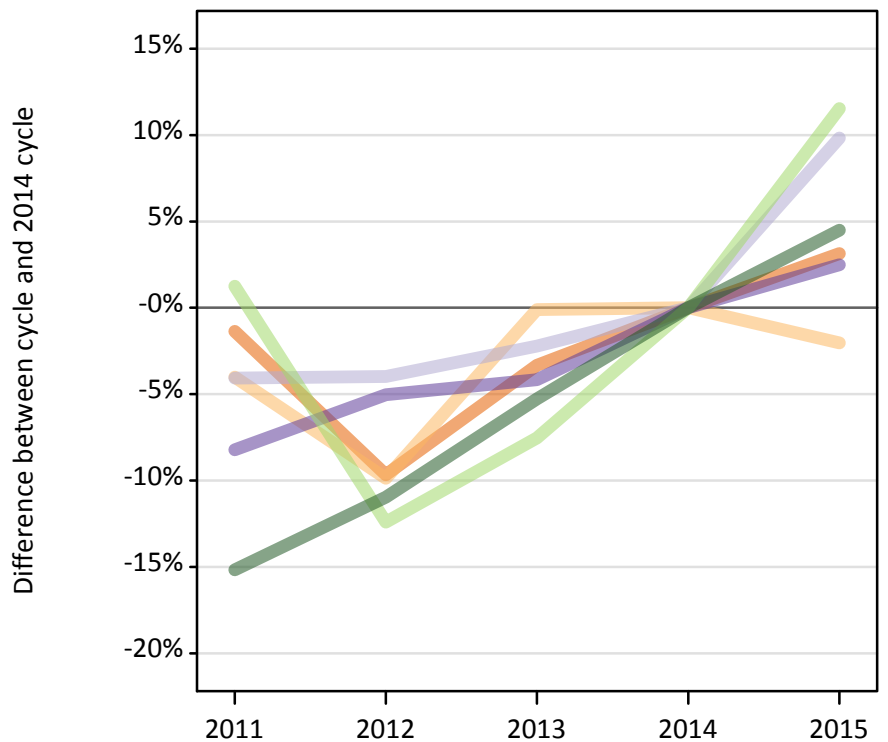
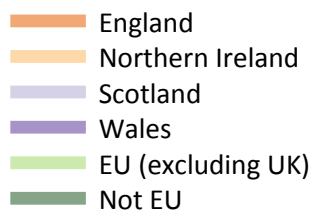
### B.15 Placed applicants at 13 days after A level results day: providers in Wales

Selected applicant domiciles: difference between cycle and 2014 cycle (at 13 days after A level results day)

Domicile of applicant	2011	2012	2013	2014	2015
England	6%	-11%	-3%	0%	-2%
Wales	1%	-2%	-1%	0%	1%
EU (excluding UK)	-15%	-13%	-7%	0%	20%
Not EU	-20%	-16%	-6%	0%	-7%

### B.16 Placed applicants at 13 days after A level results day: providers in the UK

Selected applicant domiciles: difference between cycle and 2014 cycle (at 13 days after A level results day)



### B.17 Placed applicants at 13 days after A level results day: providers in the UK

Placed applicants by domicile (at 13 days after A level results day)

Domicile of applicant	2011	2012	2013	2014	2015
England	347,300	318,040	340,360	352,080	363,150
Northern Ireland	13,550	12,730	14,110	14,120	13,840
Scotland	28,000	28,030	28,550	29,190	32,060
Wales	17,120	17,720	17,880	18,660	19,120
EU (excluding UK)	24,920	21,560	22,760	24,610	27,450
Not EU	27,880	29,260	31,130	32,870	34,340

### B.18 Placed applicants at 13 days after A level results day: providers in the UK

Selected applicant domiciles: difference between cycle and 2014 cycle (at 13 days after A level results day)

Domicile of applicant	2011	2012	2013	2014	2015
England	-1%	-10%	-3%	0%	3%
Northern Ireland	-4%	-10%	-0%	0%	-2%
Scotland	-4%	-4%	-2%	0%	10%
Wales	-8%	-5%	-4%	0%	2%
EU (excluding UK)	1%	-12%	-8%	0%	12%
Not EU	-15%	-11%	-5%	0%	4%