

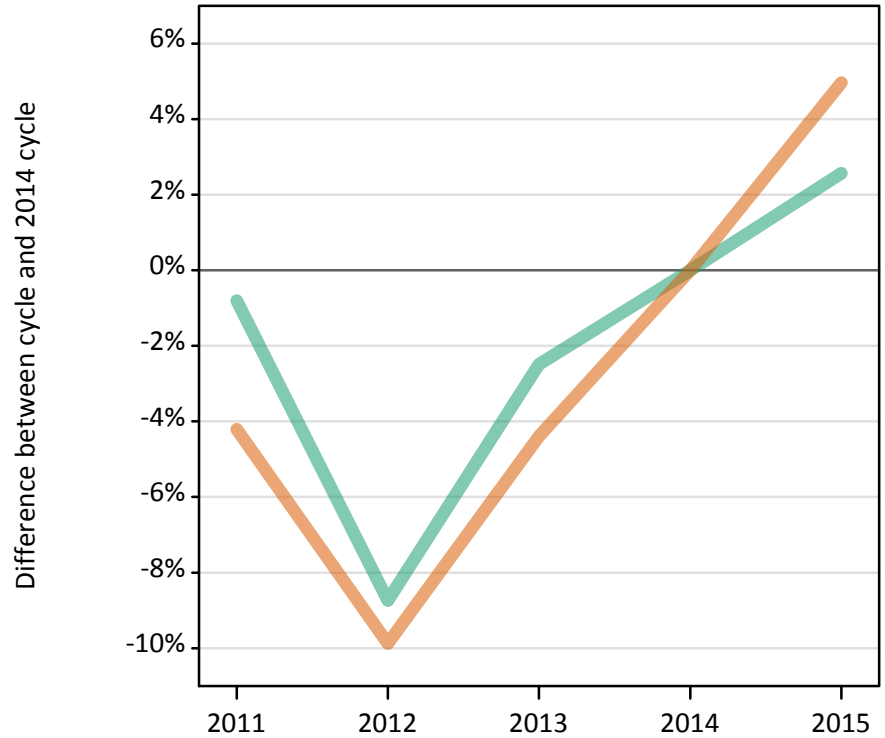
Daily Clearing Analysis: Sex

Analysis at 00:05 on Wednesday 26 August 2015 (13 days after A level results day)

S.1 Placed applicants from all domiciles by sex: 13 days after A level results day

Placed applicants: change relative to 2014 cycle totals

Men
Women



S.2 Placed applicants from all domiciles by sex: 13 days after A level results day

Applicant Status	Sex	2011	2012	2013	2014	2015
Placed	Men	206,500	189,960	202,990	208,160	213,500
	Women	252,290	237,370	251,800	263,370	276,450
	All	458,780	427,330	454,790	471,530	489,960

S.3 Placed applicants from all domiciles by sex: 13 days after A level results day

Placed applicants: change relative to 2014 cycle totals

Applicant Status	Sex	2011	2012	2013	2014	2015
Placed	Men	-1%	-9%	-2%	0%	3%
	Women	-4%	-10%	-4%	0%	5%
	All	-3%	-9%	-4%	0%	4%

S.4 Placed applicants from all domiciles by sex: 13 days after A level results day

Placed applicants: absolute change relative to 2014 cycle totals

Applicant Status	Sex	2011	2012	2013	2014	2015
Placed	Men	-1,670	-18,200	-5,170	0	5,340
	Women	-11,080	-26,000	-11,570	0	13,080
	All	-12,750	-44,200	-16,740	0	18,420

S.5 Placed applicants from the UK by sex: 13 days after A level results day

Placed applicants: change relative to 2014 cycle totals

Men
Women



S.6 Placed applicants from the UK by sex: 13 days after A level results day

Applicant Status	Sex	2011	2012	2013	2014	2015
Placed	Men	181,740	166,350	178,110	182,230	186,150
	Women	224,240	210,160	222,790	231,820	242,010
	All	405,980	376,510	400,900	414,050	428,160

S.7 Placed applicants from the UK by sex: 13 days after A level results day

Placed applicants: change relative to 2014 cycle totals

Applicant Status	Sex	2011	2012	2013	2014	2015
Placed	Men	-0%	-9%	-2%	0%	2%
	Women	-3%	-9%	-4%	0%	4%
	All	-2%	-9%	-3%	0%	3%

S.8 Placed applicants from the UK by sex: 13 days after A level results day

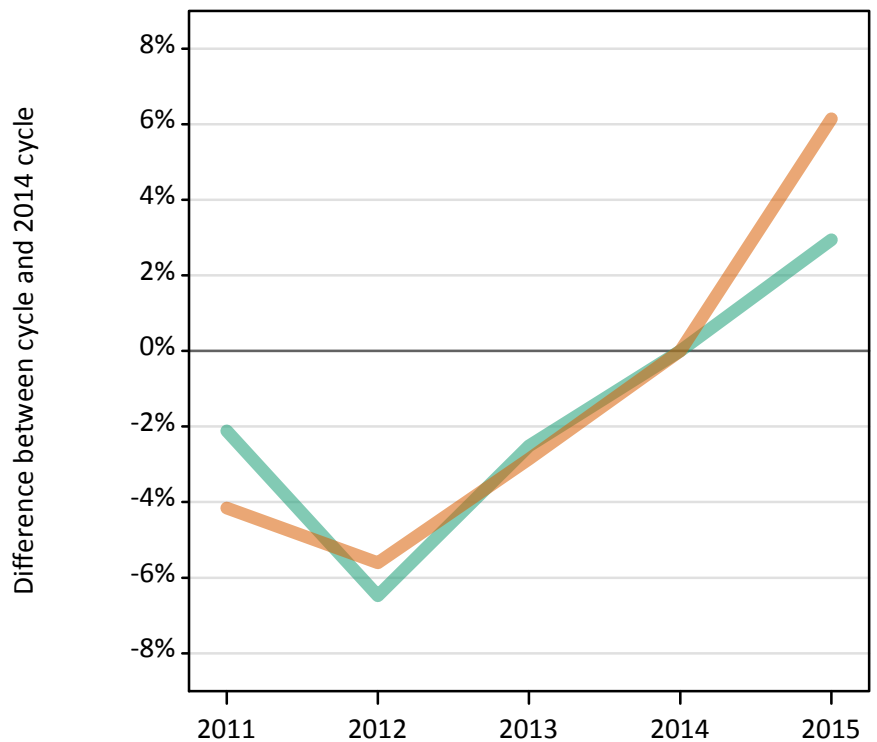
Placed applicants: absolute change relative to 2014 cycle totals

Applicant Status	Sex	2011	2012	2013	2014	2015
Placed	Men	-490	-15,880	-4,120	0	3,920
	Women	-7,580	-21,670	-9,030	0	10,190
	All	-8,070	-37,540	-13,150	0	14,110

S.9 Placed 18 year old applicants from the UK by sex: 13 days after A level results day

Placed 18 year old applicants: change relative to 2014 cycle totals

Men
Women



S.10 Placed 18 year old applicants from the UK by sex: 13 days after A level results day

Applicant Status	Sex	2011	2012	2013	2014	2015
Placed	Men	96,910	92,590	96,520	99,000	101,910
	Women	118,680	116,880	120,280	123,820	131,440
	All	215,590	209,470	216,800	222,830	233,350

S.11 Placed 18 year old applicants from the UK by sex: 13 days after A level results day

Placed 18 year old applicants: change relative to 2014 cycle totals

Applicant Status	Sex	2011	2012	2013	2014	2015
Placed	Men	-2%	-6%	-3%	0%	3%
	Women	-4%	-6%	-3%	0%	6%
	All	-3%	-6%	-3%	0%	5%

S.12 Placed 18 year old applicants from the UK by sex: 13 days after A level results day

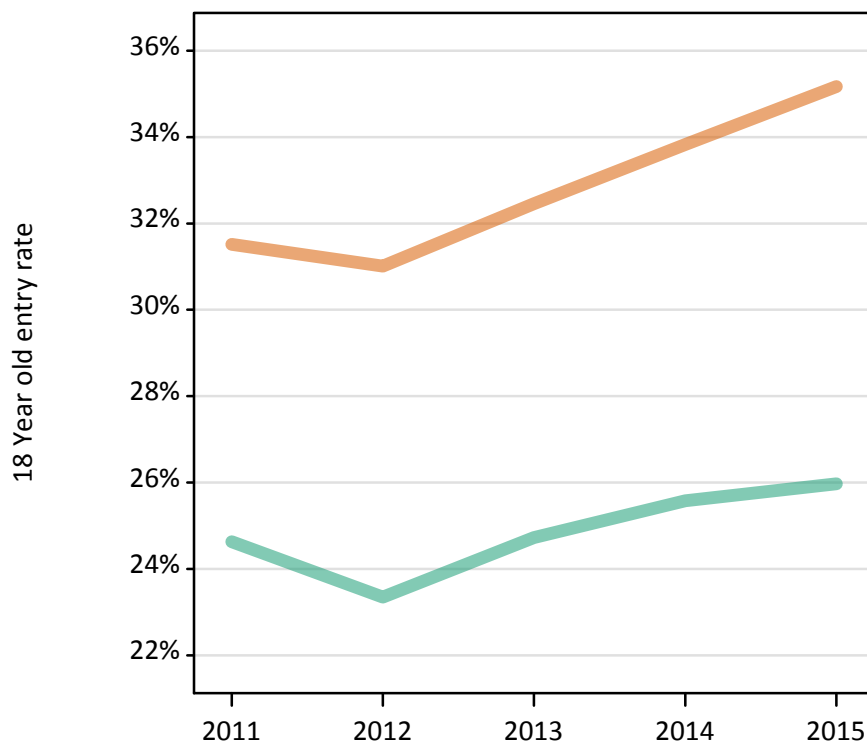
Placed 18 year old applicants: absolute change relative to 2014 cycle totals

Applicant Status	Sex	2011	2012	2013	2014	2015
Placed	Men	-2,100	-6,410	-2,490	0	2,910
	Women	-5,140	-6,940	-3,540	0	7,610
	All	-7,240	-13,350	-6,030	0	10,520

S.13 Placed 18 year old applicants from the UK by sex: 13 days after A level results day

Placed 18 year old applicants: entry rate

Men
Women



S.14 Placed 18 year old applicants from the UK by sex: 13 days after A level results day

Placed 18 year old applicants: entry rate

Applicant Status	Sex	2011	2012	2013	2014	2015
Placed	Men	24.6%	23.3%	24.7%	25.6%	26.0%
	Women	31.5%	31.0%	32.5%	33.8%	35.2%
	All	28.0%	27.1%	28.5%	29.6%	30.5%

S.15 Placed 18 year old applicants from the UK by sex: 13 days after A level results day

Placed 18 year old applicants: entry rate (indexed to 100 = Men)

Applicant Status	Sex	2011	2012	2013	2014	2015
Placed	Men	100	100	100	100	100
	Women	128	133	131	132	135

S.16 Placed applicants from England by sex: 13 days after A level results day

Placed applicants: change relative to 2014 cycle totals

Men
Women



S.17 Placed applicants from England by sex: 13 days after A level results day

Applicant Status	Sex	2011	2012	2013	2014	2015
Placed	Men	156,270	141,080	151,830	155,750	159,100
	Women	191,030	176,950	188,540	196,330	204,050
	All	347,300	318,040	340,360	352,080	363,150

S.18 Placed applicants from England by sex: 13 days after A level results day

Placed applicants: change relative to 2014 cycle totals

Applicant Status	Sex	2011	2012	2013	2014	2015
Placed	Men	0%	-9%	-3%	0%	2%
	Women	-3%	-10%	-4%	0%	4%
	All	-1%	-10%	-3%	0%	3%

S.19 Placed applicants from England by sex: 13 days after A level results day

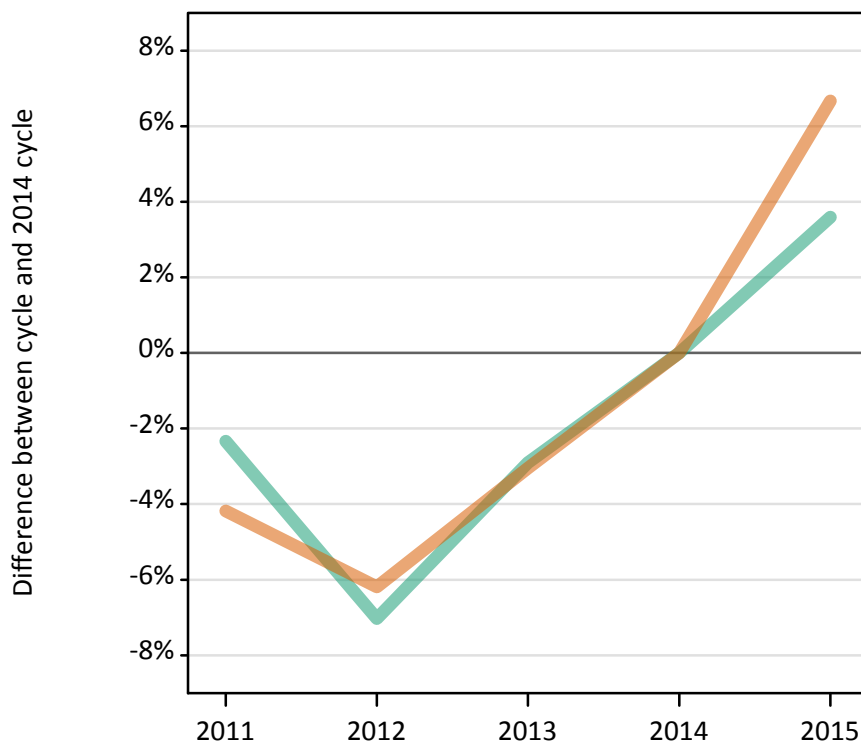
Placed applicants: absolute change relative to 2014 cycle totals

Applicant Status	Sex	2011	2012	2013	2014	2015
Placed	Men	520	-14,670	-3,920	0	3,350
	Women	-5,300	-19,380	-7,800	0	7,720
	All	-4,780	-34,050	-11,720	0	11,070

S.20 Placed 18 year old applicants from England by sex: 13 days after A level results day

Placed 18 year old applicants: change relative to 2014 cycle totals

Men
Women



S.21 Placed 18 year old applicants from England by sex: 13 days after A level results day

Applicant Status	Sex	2011	2012	2013	2014	2015
Placed	Men	82,920	78,940	82,440	84,910	87,960
	Women	100,680	98,570	101,870	105,070	112,080
	All	183,600	177,510	184,310	189,980	200,030

S.22 Placed 18 year old applicants from England by sex: 13 days after A level results day

Placed 18 year old applicants: change relative to 2014 cycle totals

Applicant Status	Sex	2011	2012	2013	2014	2015
Placed	Men	-2%	-7%	-3%	0%	4%
	Women	-4%	-6%	-3%	0%	7%
	All	-3%	-7%	-3%	0%	5%

S.23 Placed 18 year old applicants from England by sex: 13 days after A level results day

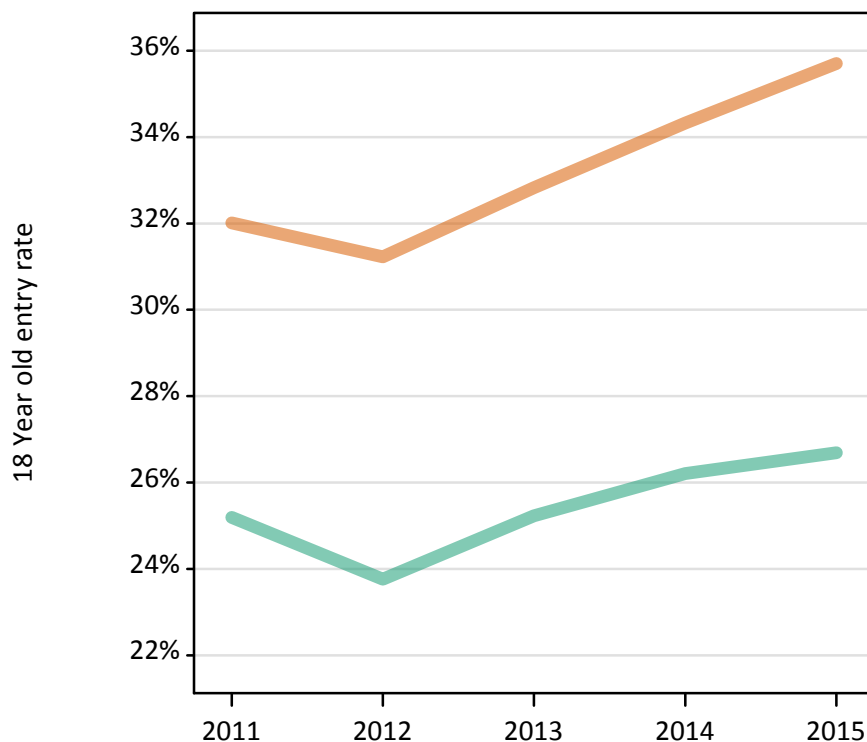
Placed 18 year old applicants: absolute change relative to 2014 cycle totals

Applicant Status	Sex	2011	2012	2013	2014	2015
Placed	Men	-1,990	-5,970	-2,470	0	3,050
	Women	-4,390	-6,510	-3,200	0	7,000
	All	-6,380	-12,470	-5,670	0	10,050

S.24 Placed 18 year old applicants from England by sex: 13 days after A level results day

Placed 18 year old applicants: entry rate

Men
Women



S.25 Placed 18 year old applicants from England by sex: 13 days after A level results day

Placed 18 year old applicants: entry rate

Applicant Status	Sex	2011	2012	2013	2014	2015
Placed	Men	25.2%	23.8%	25.2%	26.2%	26.7%
	Women	32.0%	31.2%	32.8%	34.3%	35.7%
	All	28.5%	27.4%	28.9%	30.1%	31.1%

S.26 Placed 18 year old applicants from England by sex: 13 days after A level results day

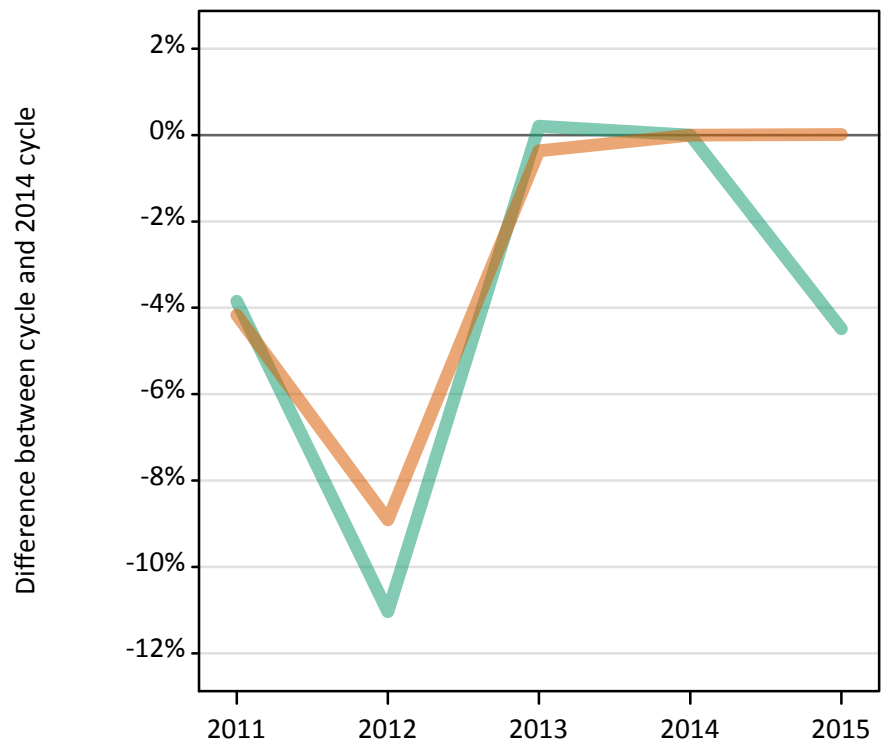
Placed 18 year old applicants: entry rate (indexed to 100 = Men)

Applicant Status	Sex	2011	2012	2013	2014	2015
Placed	Men	100	100	100	100	100
	Women	127	131	130	131	134

S.27 Placed applicants from Northern Ireland by sex: 13 days after A level results day

Placed applicants: change relative to 2014 cycle totals

Men
Women



S.28 Placed applicants from Northern Ireland by sex: 13 days after A level results day

Applicant Status	Sex	2011	2012	2013	2014	2015
Placed	Men	6,170	5,710	6,430	6,420	6,130
	Women	7,390	7,020	7,680	7,710	7,710
	All	13,550	12,730	14,110	14,120	13,840

S.29 Placed applicants from Northern Ireland by sex: 13 days after A level results day

Placed applicants: change relative to 2014 cycle totals

Applicant Status	Sex	2011	2012	2013	2014	2015
Placed	Men	-4%	-11%	0%	0%	-4%
	Women	-4%	-9%	-0%	0%	0%
	All	-4%	-10%	-0%	0%	-2%

S.30 Placed applicants from Northern Ireland by sex: 13 days after A level results day

Placed applicants: absolute change relative to 2014 cycle totals

Applicant Status	Sex	2011	2012	2013	2014	2015
Placed	Men	-250	-710	10	0	-290
	Women	-320	-690	-30	0	0
	All	-570	-1,400	-20	0	-290

S.31 Placed 18 year old applicants from Northern Ireland by sex: 13 days after A level results day

Placed 18 year old applicants: change relative to 2014 cycle totals

Men
Women



S.32 Placed 18 year old applicants from Northern Ireland by sex: 13 days after A level results day

Applicant Status	Sex	2011	2012	2013	2014	2015
Placed	Men	3,800	3,560	3,890	3,740	3,600
	Women	4,800	4,650	4,830	4,770	4,820
	All	8,590	8,200	8,710	8,510	8,420

S.33 Placed 18 year old applicants from Northern Ireland by sex: 13 days after A level results day

Placed 18 year old applicants: change relative to 2014 cycle totals

Applicant Status	Sex	2011	2012	2013	2014	2015
Placed	Men	1%	-5%	4%	0%	-4%
	Women	0%	-3%	1%	0%	1%
	All	1%	-4%	2%	0%	-1%

S.34 Placed 18 year old applicants from Northern Ireland by sex: 13 days after A level results day

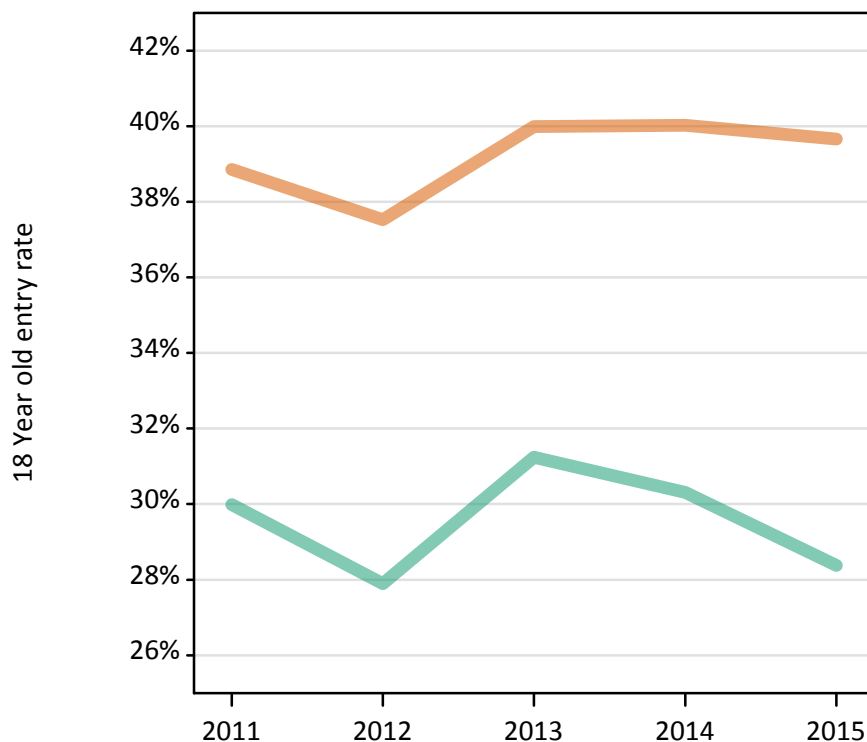
Placed 18 year old applicants: absolute change relative to 2014 cycle totals

Applicant Status	Sex	2011	2012	2013	2014	2015
Placed	Men	60	-190	140	0	-140
	Women	20	-130	60	0	50
	All	80	-310	200	0	-90

S.35 Placed 18 year old applicants from Northern Ireland by sex: 13 days after A level results day

Placed 18 year old applicants: entry rate

Men
Women



S.36 Placed 18 year old applicants from Northern Ireland by sex: 13 days after A level results day

Placed 18 year old applicants: entry rate

Applicant Status	Sex	2011	2012	2013	2014	2015
Placed	Men	30.0%	27.9%	31.2%	30.3%	28.4%
	Women	38.9%	37.5%	40.0%	40.0%	39.7%
	All	34.4%	32.6%	35.6%	35.1%	33.9%

S.37 Placed 18 year old applicants from Northern Ireland by sex: 13 days after A level results day

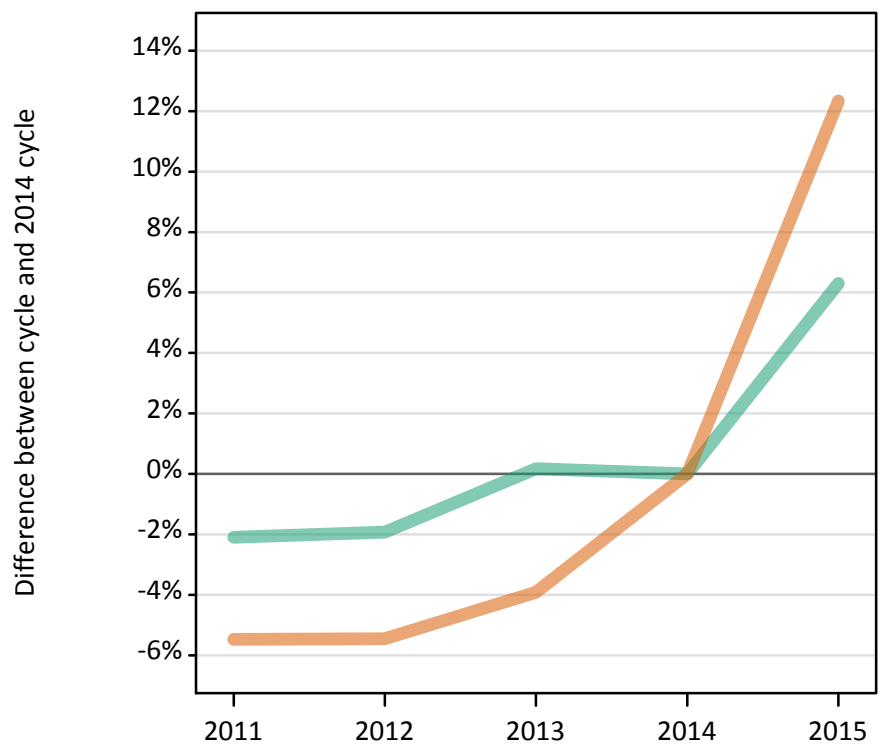
Placed 18 year old applicants: entry rate (indexed to 100 = Men)

Applicant Status	Sex	2011	2012	2013	2014	2015
Placed	Men	100	100	100	100	100
	Women	130	135	128	132	140

S.38 Placed applicants from Scotland by sex: 13 days after A level results day

Placed applicants: change relative to 2014 cycle totals

Men
Women



S.39 Placed applicants from Scotland by sex: 13 days after A level results day

Applicant Status	Sex	2011	2012	2013	2014	2015
Placed	Men	11,910	11,930	12,180	12,160	12,930
	Women	16,100	16,100	16,360	17,030	19,130
	All	28,000	28,030	28,550	29,190	32,060

S.40 Placed applicants from Scotland by sex: 13 days after A level results day

Placed applicants: change relative to 2014 cycle totals

Applicant Status	Sex	2011	2012	2013	2014	2015
Placed	Men	-2%	-2%	0%	0%	6%
	Women	-5%	-5%	-4%	0%	12%
	All	-4%	-4%	-2%	0%	10%

S.41 Placed applicants from Scotland by sex: 13 days after A level results day

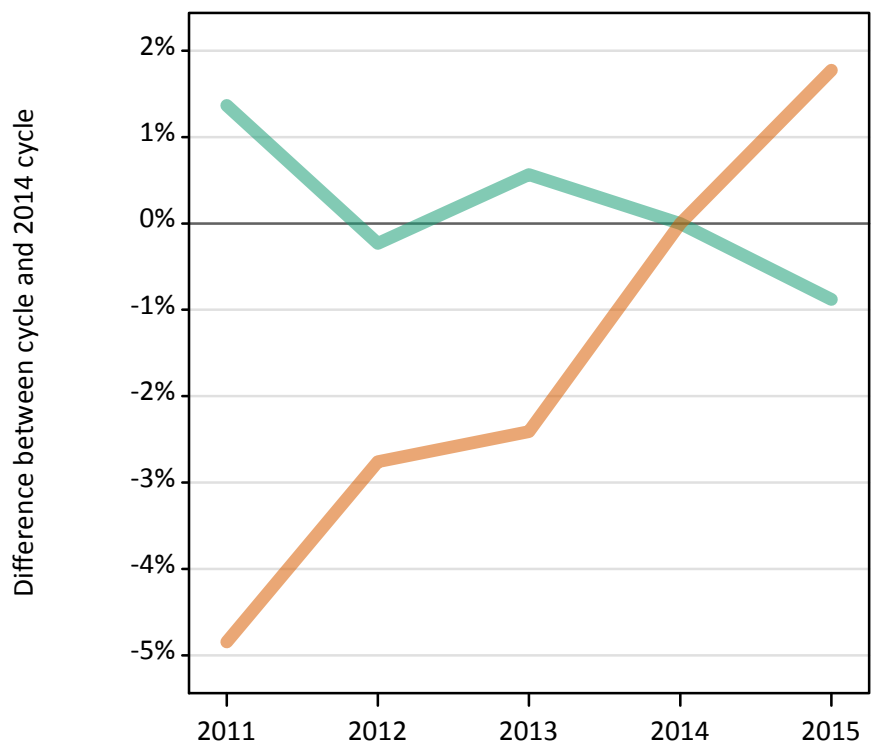
Placed applicants: absolute change relative to 2014 cycle totals

Applicant Status	Sex	2011	2012	2013	2014	2015
Placed	Men	-260	-230	20	0	770
	Women	-930	-930	-670	0	2,100
	All	-1,190	-1,160	-650	0	2,870

S.42 Placed 18 year old applicants from Scotland by sex: 13 days after A level results day

Placed 18 year old applicants: change relative to 2014 cycle totals

Men
Women



S.43 Placed 18 year old applicants from Scotland by sex: 13 days after A level results day

Applicant Status	Sex	2011	2012	2013	2014	2015
Placed	Men	6,090	6,000	6,050	6,010	5,960
	Women	7,890	8,070	8,100	8,300	8,440
	All	13,990	14,060	14,140	14,310	14,400

S.44 Placed 18 year old applicants from Scotland by sex: 13 days after A level results day

Placed 18 year old applicants: change relative to 2014 cycle totals

Applicant Status	Sex	2011	2012	2013	2014	2015
Placed	Men	1%	-0%	1%	0%	-1%
	Women	-5%	-3%	-2%	0%	2%
	All	-2%	-2%	-1%	0%	1%

S.45 Placed 18 year old applicants from Scotland by sex: 13 days after A level results day

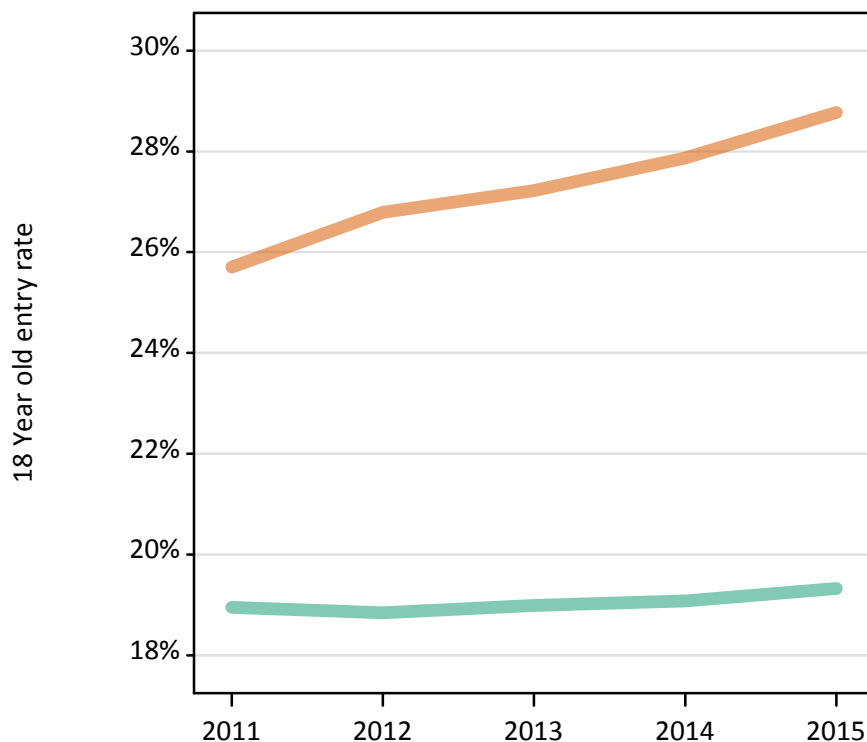
Placed 18 year old applicants: absolute change relative to 2014 cycle totals

Applicant Status	Sex	2011	2012	2013	2014	2015
Placed	Men	80	-10	30	0	-50
	Women	-400	-230	-200	0	150
	All	-320	-240	-170	0	90

S.46 Placed 18 year old applicants from Scotland by sex: 13 days after A level results day

Placed 18 year old applicants: entry rate

Men
Women



S.47 Placed 18 year old applicants from Scotland by sex: 13 days after A level results day

Placed 18 year old applicants: entry rate

Applicant Status	Sex	2011	2012	2013	2014	2015
Placed	Men	19.0%	18.8%	19.0%	19.1%	19.3%
	Women	25.7%	26.8%	27.2%	27.9%	28.8%
	All	22.3%	22.7%	23.0%	23.3%	23.9%

S.48 Placed 18 year old applicants from Scotland by sex: 13 days after A level results day

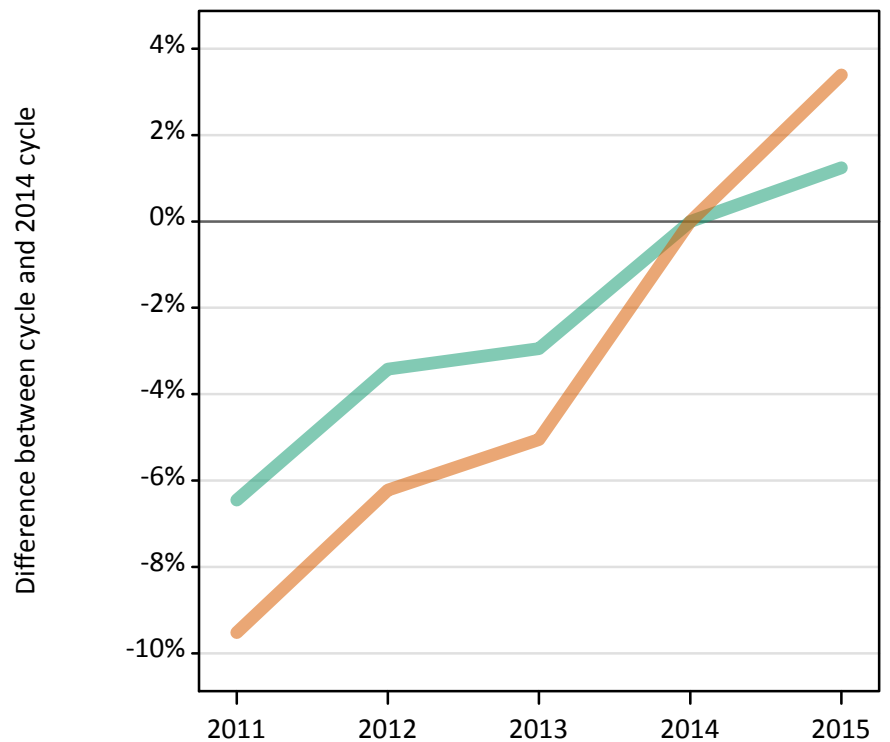
Placed 18 year old applicants: entry rate (indexed to 100 = Men)

Applicant Status	Sex	2011	2012	2013	2014	2015
Placed	Men	100	100	100	100	100
	Women	136	142	143	146	149

S.49 Placed applicants from Wales by sex: 13 days after A level results day

Placed applicants: change relative to 2014 cycle totals

Men
Women



S.50 Placed applicants from Wales by sex: 13 days after A level results day

Applicant Status	Sex	2011	2012	2013	2014	2015
Placed	Men	7,390	7,630	7,670	7,900	8,000
	Women	9,730	10,090	10,210	10,760	11,120
	All	17,120	17,720	17,880	18,660	19,120

S.51 Placed applicants from Wales by sex: 13 days after A level results day

Placed applicants: change relative to 2014 cycle totals

Applicant Status	Sex	2011	2012	2013	2014	2015
Placed	Men	-6%	-3%	-3%	0%	1%
	Women	-10%	-6%	-5%	0%	3%
	All	-8%	-5%	-4%	0%	2%

S.52 Placed applicants from Wales by sex: 13 days after A level results day

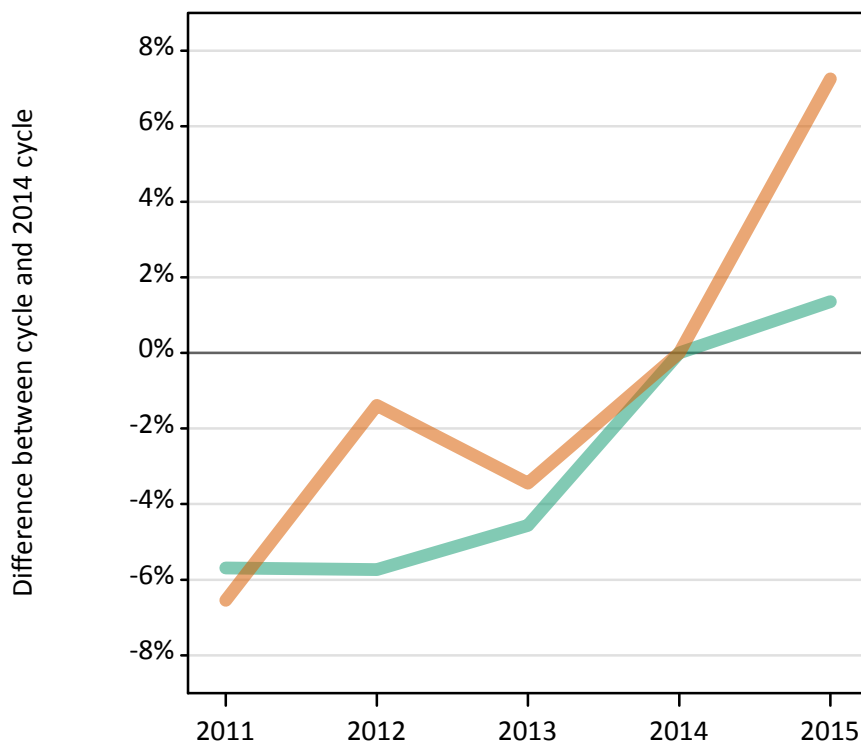
Placed applicants: absolute change relative to 2014 cycle totals

Applicant Status	Sex	2011	2012	2013	2014	2015
Placed	Men	-510	-270	-230	0	100
	Women	-1,020	-670	-540	0	370
	All	-1,530	-940	-780	0	460

S.53 Placed 18 year old applicants from Wales by sex: 13 days after A level results day

Placed 18 year old applicants: change relative to 2014 cycle totals

Men
Women



S.54 Placed 18 year old applicants from Wales by sex: 13 days after A level results day

Applicant Status	Sex	2011	2012	2013	2014	2015
Placed	Men	4,100	4,090	4,140	4,340	4,400
	Women	5,310	5,600	5,490	5,680	6,100
	All	9,410	9,700	9,630	10,030	10,500

S.55 Placed 18 year old applicants from Wales by sex: 13 days after A level results day

Placed 18 year old applicants: change relative to 2014 cycle totals

Applicant Status	Sex	2011	2012	2013	2014	2015
Placed	Men	-6%	-6%	-5%	0%	1%
	Women	-7%	-1%	-3%	0%	7%
	All	-6%	-3%	-4%	0%	5%

S.56 Placed 18 year old applicants from Wales by sex: 13 days after A level results day

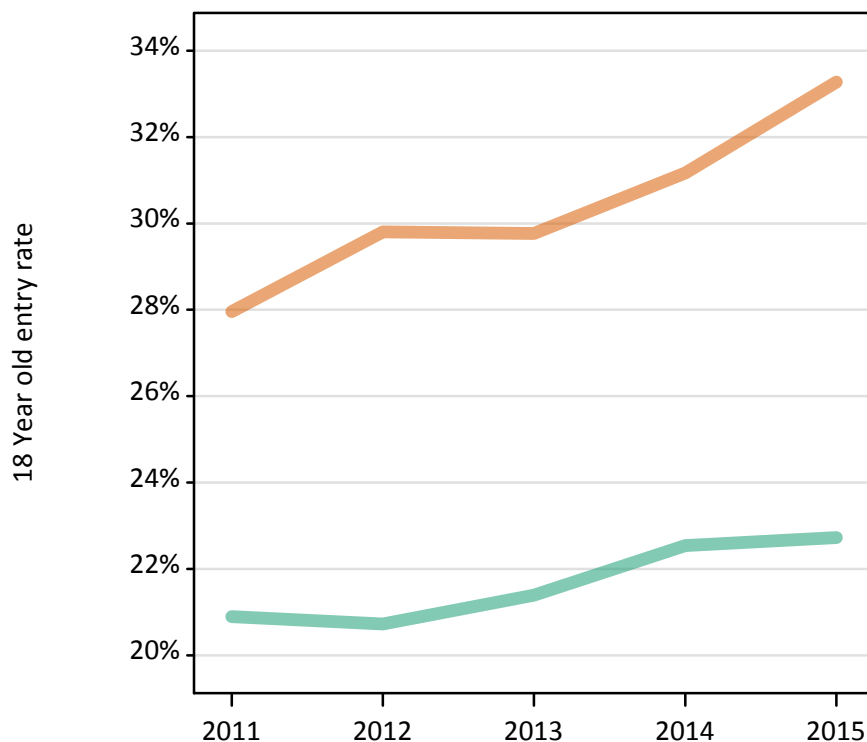
Placed 18 year old applicants: absolute change relative to 2014 cycle totals

Applicant Status	Sex	2011	2012	2013	2014	2015
Placed	Men	-250	-250	-200	0	60
	Women	-370	-80	-200	0	410
	All	-620	-330	-390	0	470

S.57 Placed 18 year old applicants from Wales by sex: 13 days after A level results day

Placed 18 year old applicants: entry rate

Men
Women



S.58 Placed 18 year old applicants from Wales by sex: 13 days after A level results day

Placed 18 year old applicants: entry rate

Applicant Status	Sex	2011	2012	2013	2014	2015
Placed	Men	20.9%	20.7%	21.4%	22.5%	22.7%
	Women	28.0%	29.8%	29.8%	31.2%	33.3%
	All	24.4%	25.2%	25.5%	26.7%	27.9%

S.59 Placed 18 year old applicants from Wales by sex: 13 days after A level results day

Placed 18 year old applicants: entry rate (indexed to 100 = Men)

Applicant Status	Sex	2011	2012	2013	2014	2015
Placed	Men	100	100	100	100	100
	Women	134	144	139	138	146

S.60 Placed applicants from the EU (excluding the UK) by sex: 13 days after A level results day

Placed applicants: change relative to 2014 cycle totals

Men
Women



S.61 Placed applicants from the EU (excluding the UK) by sex: 13 days after A level results day

Applicant Status	Sex	2011	2012	2013	2014	2015
Placed	Men	11,180	9,580	10,030	10,580	11,590
	Women	13,750	11,980	12,730	14,040	15,860
	All	24,920	21,560	22,760	24,610	27,450

S.62 Placed applicants from the EU (excluding the UK) by sex: 13 days after A level results day

Placed applicants: change relative to 2014 cycle totals

Applicant Status	Sex	2011	2012	2013	2014	2015
Placed	Men	6%	-9%	-5%	0%	10%
	Women	-2%	-15%	-9%	0%	13%
	All	1%	-12%	-8%	0%	12%

S.63 Placed applicants from the EU (excluding the UK) by sex: 13 days after A level results day

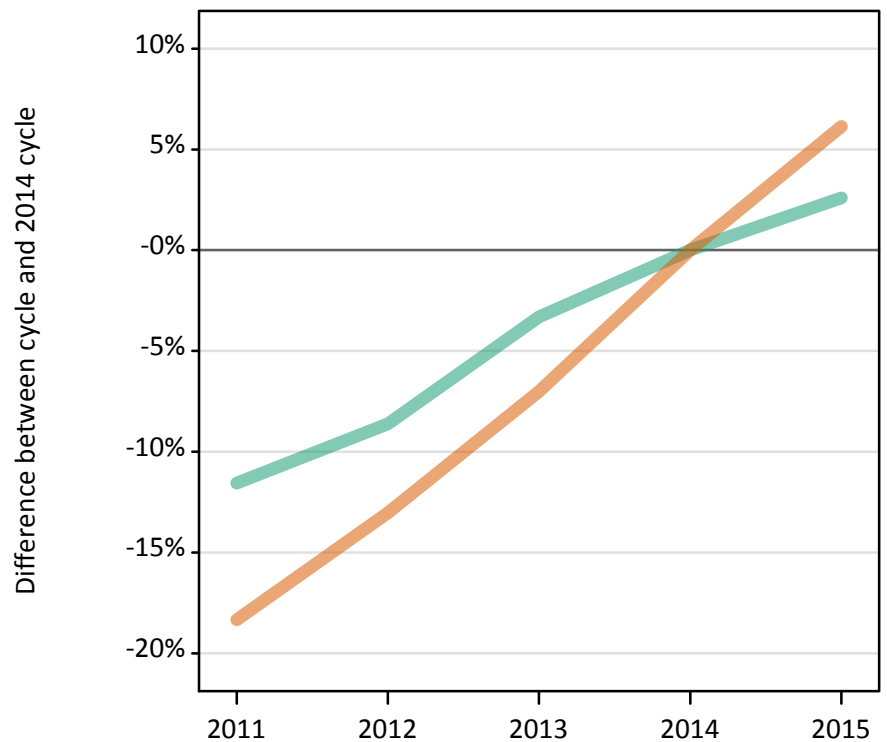
Placed applicants: absolute change relative to 2014 cycle totals

Applicant Status	Sex	2011	2012	2013	2014	2015
Placed	Men	600	-1,000	-550	0	1,020
	Women	-290	-2,060	-1,310	0	1,820
	All	310	-3,050	-1,850	0	2,840

S.64 Placed applicants from overseas (not EU) by sex: 13 days after A level results day

Placed applicants: change relative to 2014 cycle totals

Men
Women



S.65 Placed applicants from overseas (not EU) by sex: 13 days after A level results day

Applicant Status	Sex	2011	2012	2013	2014	2015
Placed	Men	13,580	14,030	14,850	15,360	15,760
	Women	14,300	15,230	16,280	17,510	18,590
	All	27,880	29,260	31,130	32,870	34,340

S.66 Placed applicants from overseas (not EU) by sex: 13 days after A level results day

Placed applicants: change relative to 2014 cycle totals

Applicant Status	Sex	2011	2012	2013	2014	2015
Placed	Men	-12%	-9%	-3%	0%	3%
	Women	-18%	-13%	-7%	0%	6%
	All	-15%	-11%	-5%	0%	4%

S.67 Placed applicants from overseas (not EU) by sex: 13 days after A level results day

Placed applicants: absolute change relative to 2014 cycle totals

Applicant Status	Sex	2011	2012	2013	2014	2015
Placed	Men	-1,770	-1,320	-510	0	400
	Women	-3,210	-2,280	-1,230	0	1,080
	All	-4,980	-3,610	-1,740	0	1,480