

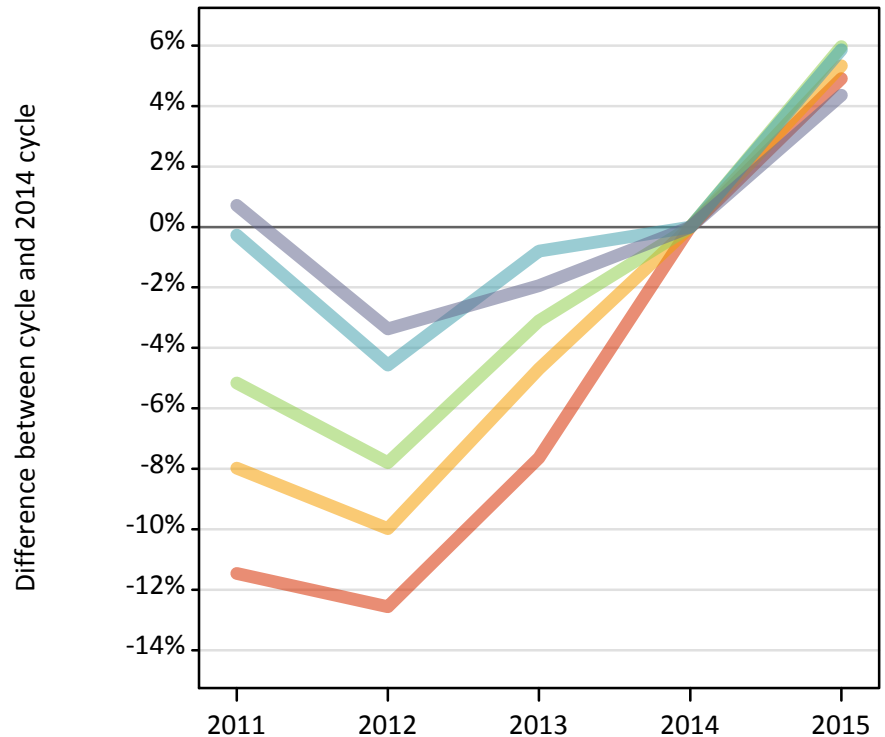
Daily Clearing Analysis: POLAR3

Analysis at 00:05 on Wednesday 26 August 2015 (13 days after A level results day)

P.1 Placed 18 year old applicants from England by POLAR3 quintile: 13 days after A level results day

Placed 18 year old applicants: change relative to 2014 cycle totals

- Quintile 1
- Quintile 2
- Quintile 3
- Quintile 4
- Quintile 5



P.2 Placed 18 year old applicants from England by POLAR3 quintile: 13 days after A level results day

Applicant Status	POLAR3	2011	2012	2013	2014	2015
Placed	Quintile 1	18,580	18,350	19,380	20,980	22,010
	Quintile 2	27,130	26,540	28,100	29,480	31,050
	Quintile 3	35,420	34,440	36,190	37,350	39,580
	Quintile 4	43,510	41,630	43,280	43,630	46,180
	Quintile 5	58,630	56,250	57,080	58,210	60,750

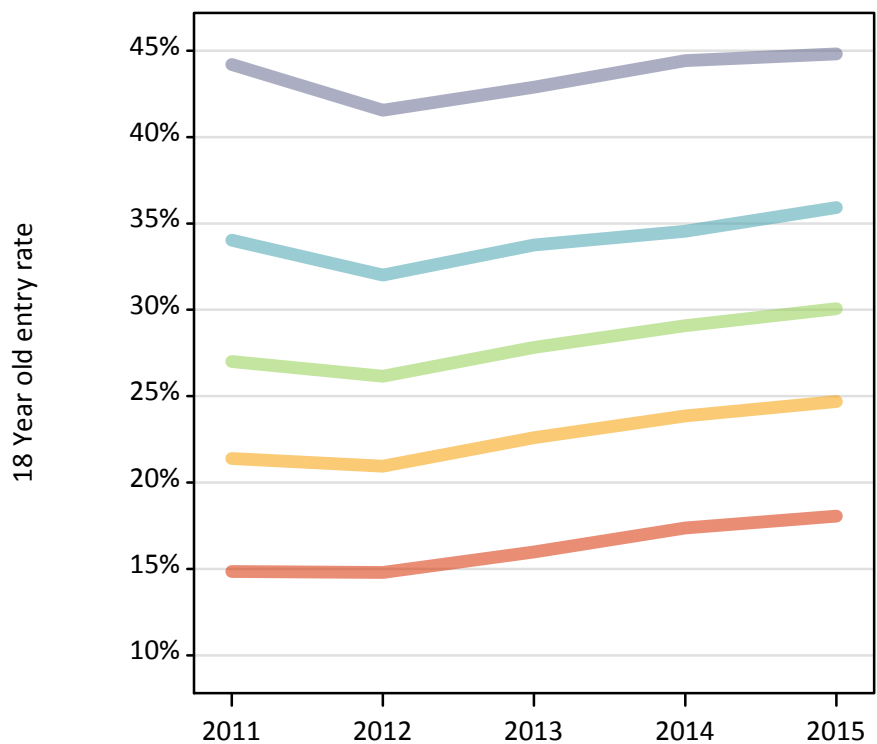
P.3 Placed 18 year old applicants from England by POLAR3 quintile: 13 days after A level results day

Placed 18 year old applicants: change relative to 2014 cycle totals

Applicant Status	POLAR3	2011	2012	2013	2014	2015
Placed	Quintile 1	-11%	-13%	-8%	0%	5%
	Quintile 2	-8%	-10%	-5%	0%	5%
	Quintile 3	-5%	-8%	-3%	0%	6%
	Quintile 4	-0%	-5%	-1%	0%	6%
	Quintile 5	1%	-3%	-2%	0%	4%

P.4 Placed 18 year old applicants from England by POLAR3 quintile: 13 days after A level results day

Placed 18 year old applicants: entry rate



P.5 Placed 18 year old applicants from England by POLAR3 quintile: 13 days after A level results day

Placed 18 year old applicants: entry rate

Applicant Status	POLAR3	2011	2012	2013	2014	2015
Placed	Quintile 1	14.8%	14.8%	16.0%	17.4%	18.1%
	Quintile 2	21.4%	21.0%	22.6%	23.9%	24.7%
	Quintile 3	27.0%	26.1%	27.8%	29.1%	30.1%
	Quintile 4	34.0%	32.0%	33.7%	34.5%	35.9%
	Quintile 5	44.2%	41.5%	42.9%	44.4%	44.8%

P.6 Placed 18 year old applicants from England by POLAR3 quintile: 13 days after A level results day

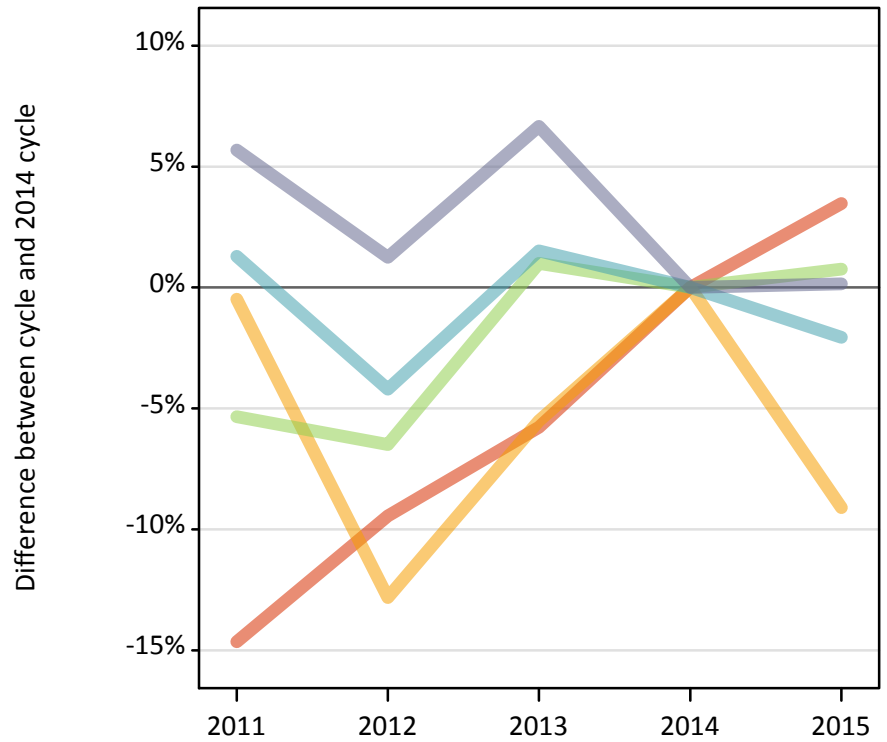
Placed 18 year old applicants: entry rate (indexed to 100 = Quintile 1)

Applicant Status	POLAR3	2011	2012	2013	2014	2015
Placed	Quintile 1	100	100	100	100	100
	Quintile 2	144	142	141	137	137
	Quintile 3	182	177	174	168	167
	Quintile 4	229	216	211	199	199
	Quintile 5	298	281	268	256	248

P.7 Placed 18 year old applicants from Northern Ireland by POLAR3 quintile: 13 days after A level results day

Placed 18 year old applicants: change relative to 2014 cycle totals

- Quintile 1
- Quintile 2
- Quintile 3
- Quintile 4
- Quintile 5



P.8 Placed 18 year old applicants from Northern Ireland by POLAR3 quintile: 13 days after A level results day

Applicant Status	POLAR3	2011	2012	2013	2014	2015
Placed	Quintile 1	440	470	490	520	540
	Quintile 2	830	730	790	840	760
	Quintile 3	1,240	1,230	1,320	1,310	1,320
	Quintile 4	2,600	2,460	2,610	2,570	2,510
	Quintile 5	3,460	3,310	3,490	3,270	3,280

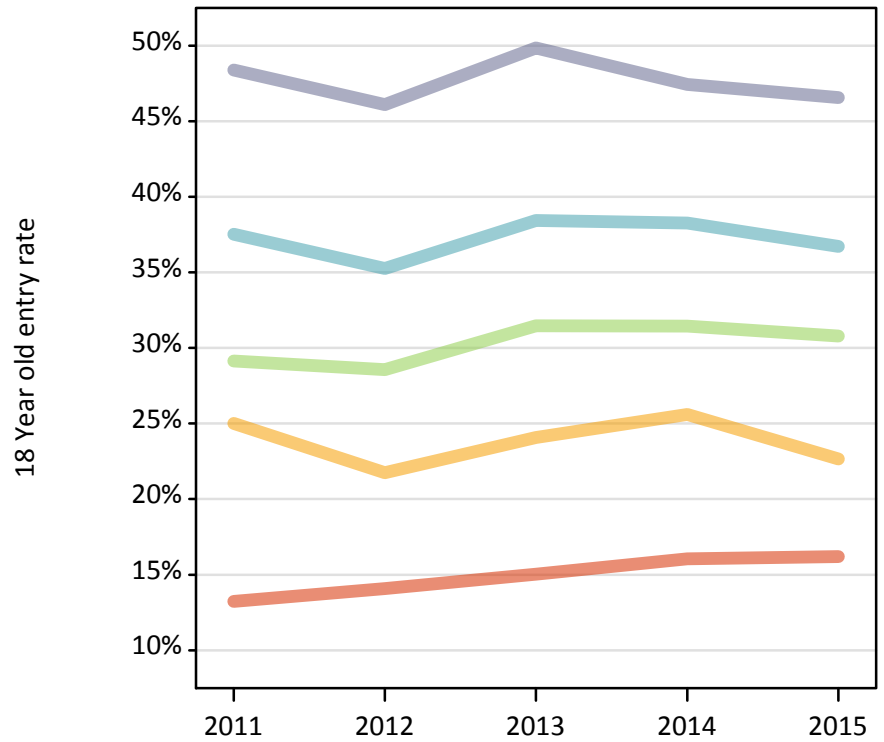
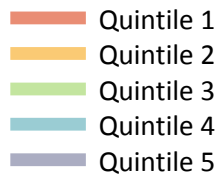
P.9 Placed 18 year old applicants from Northern Ireland by POLAR3 quintile: 13 days after A level results day

Placed 18 year old applicants: change relative to 2014 cycle totals

Applicant Status	POLAR3	2011	2012	2013	2014	2015
Placed	Quintile 1	-15%	-9%	-6%	0%	3%
	Quintile 2	-0%	-13%	-6%	0%	-9%
	Quintile 3	-5%	-6%	1%	0%	1%
	Quintile 4	1%	-4%	2%	0%	-2%
	Quintile 5	6%	1%	7%	0%	0%

P.10 Placed 18 year old applicants from Northern Ireland by POLAR3 quintile: 13 days after A level results day

Placed 18 year old applicants: entry rate



P.11 Placed 18 year old applicants from Northern Ireland by POLAR3 quintile: 13 days after A level results day

Placed 18 year old applicants: entry rate

Applicant Status	POLAR3	2011	2012	2013	2014	2015
Placed	Quintile 1	13.2%	14.1%	15.0%	16.1%	16.2%
	Quintile 2	25.0%	21.7%	24.1%	25.6%	22.6%
	Quintile 3	29.1%	28.6%	31.5%	31.4%	30.8%
	Quintile 4	37.5%	35.3%	38.4%	38.3%	36.7%
	Quintile 5	48.4%	46.1%	49.8%	47.4%	46.6%

P.12 Placed 18 year old applicants from Northern Ireland by POLAR3 quintile: 13 days after A level results day

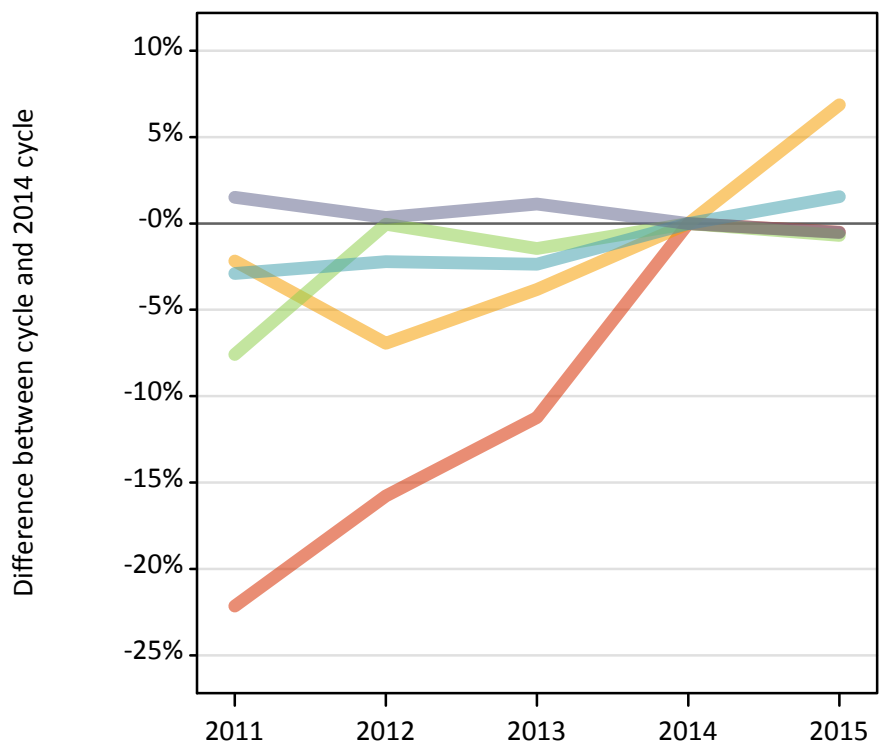
Placed 18 year old applicants: entry rate (indexed to 100 = Quintile 1)

Applicant Status	POLAR3	2011	2012	2013	2014	2015
Placed	Quintile 1	100	100	100	100	100
	Quintile 2	189	154	160	159	140
	Quintile 3	220	203	209	196	190
	Quintile 4	283	250	256	238	227
	Quintile 5	365	327	331	295	287

P.13 Placed 18 year old applicants from Scotland by POLAR3 quintile: 13 days after A level results day

Placed 18 year old applicants: change relative to 2014 cycle totals

- Quintile 1
- Quintile 2
- Quintile 3
- Quintile 4
- Quintile 5



P.14 Placed 18 year old applicants from Scotland by POLAR3 quintile: 13 days after A level results day

Applicant Status	POLAR3	2011	2012	2013	2014	2015
Placed	Quintile 1	460	500	530	600	590
	Quintile 2	1,350	1,290	1,330	1,380	1,480
	Quintile 3	2,020	2,190	2,160	2,190	2,180
	Quintile 4	3,280	3,300	3,300	3,380	3,430
	Quintile 5	6,830	6,750	6,800	6,730	6,690

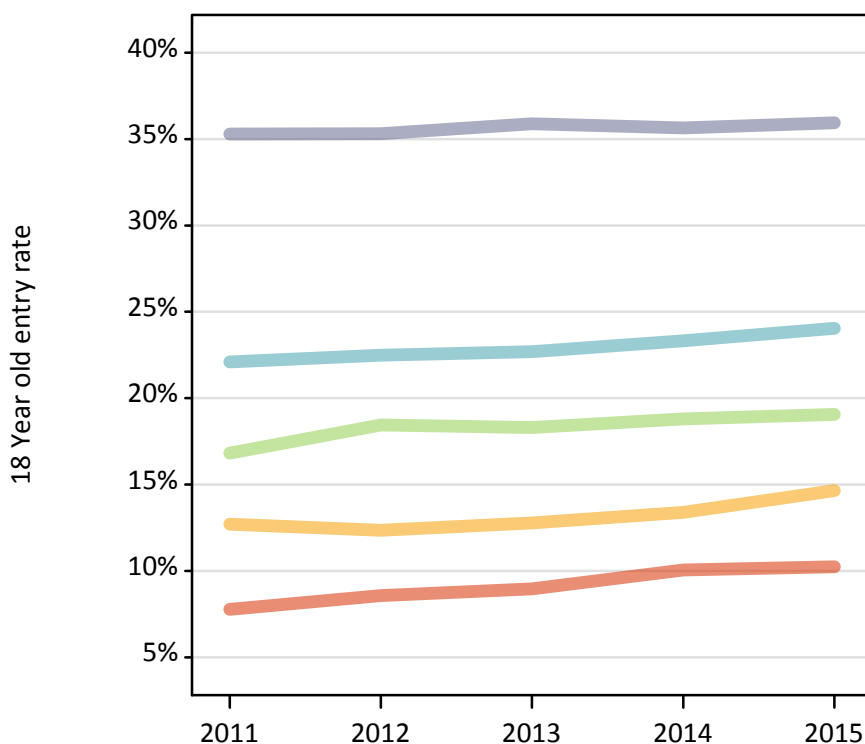
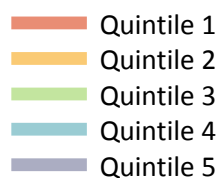
P.15 Placed 18 year old applicants from Scotland by POLAR3 quintile: 13 days after A level results day

Placed 18 year old applicants: change relative to 2014 cycle totals

Applicant Status	POLAR3	2011	2012	2013	2014	2015
Placed	Quintile 1	-22%	-16%	-11%	0%	-1%
	Quintile 2	-2%	-7%	-4%	0%	7%
	Quintile 3	-8%	-0%	-1%	0%	-1%
	Quintile 4	-3%	-2%	-2%	0%	2%
	Quintile 5	2%	0%	1%	0%	-1%

P.16 Placed 18 year old applicants from Scotland by POLAR3 quintile: 13 days after A level results day

Placed 18 year old applicants: entry rate



P.17 Placed 18 year old applicants from Scotland by POLAR3 quintile: 13 days after A level results day

Placed 18 year old applicants: entry rate

Applicant Status	POLAR3	2011	2012	2013	2014	2015
Placed	Quintile 1	7.8%	8.6%	9.0%	10.0%	10.2%
	Quintile 2	12.7%	12.4%	12.8%	13.4%	14.7%
	Quintile 3	16.8%	18.5%	18.3%	18.8%	19.1%
	Quintile 4	22.1%	22.5%	22.7%	23.3%	24.0%
	Quintile 5	35.3%	35.3%	35.9%	35.6%	35.9%

P.18 Placed 18 year old applicants from Scotland by POLAR3 quintile: 13 days after A level results day

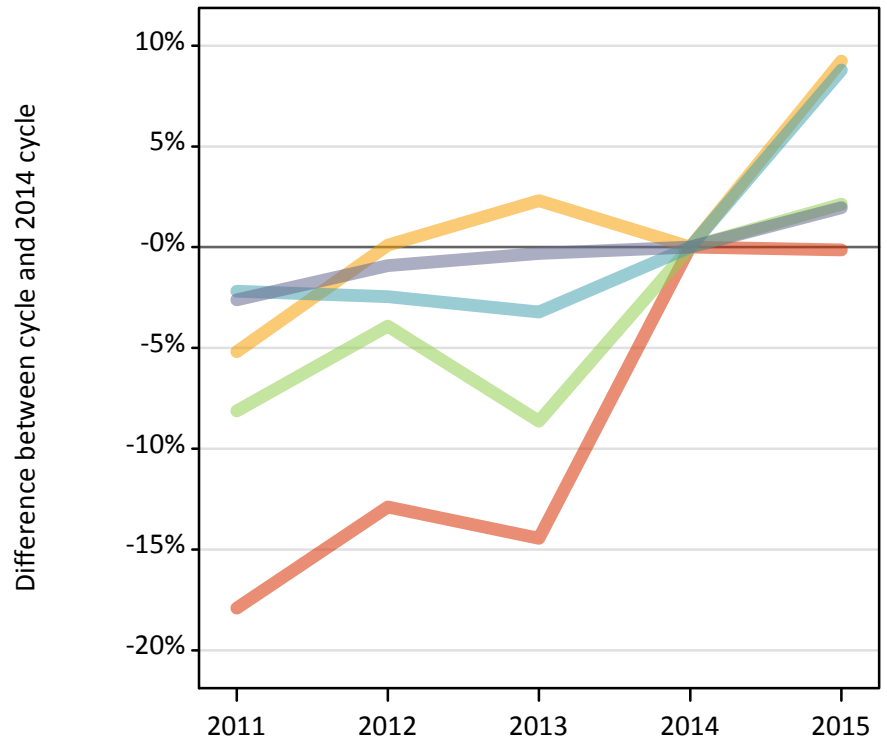
Placed 18 year old applicants: entry rate (indexed to 100 = Quintile 1)

Applicant Status	POLAR3	2011	2012	2013	2014	2015
Placed	Quintile 1	100	100	100	100	100
	Quintile 2	163	144	143	133	143
	Quintile 3	216	215	204	187	186
	Quintile 4	284	262	253	232	235
	Quintile 5	454	412	400	355	351

P.19 Placed 18 year old applicants from Wales by POLAR3 quintile: 13 days after A level results day

Placed 18 year old applicants: change relative to 2014 cycle totals

- Quintile 1
- Quintile 2
- Quintile 3
- Quintile 4
- Quintile 5



P.20 Placed 18 year old applicants from Wales by POLAR3 quintile: 13 days after A level results day

Applicant Status	POLAR3	2011	2012	2013	2014	2015
Placed	Quintile 1	1,210	1,280	1,260	1,470	1,470
	Quintile 2	1,850	1,950	2,000	1,950	2,130
	Quintile 3	1,600	1,670	1,590	1,740	1,770
	Quintile 4	2,160	2,150	2,130	2,210	2,400
	Quintile 5	2,580	2,620	2,640	2,650	2,700

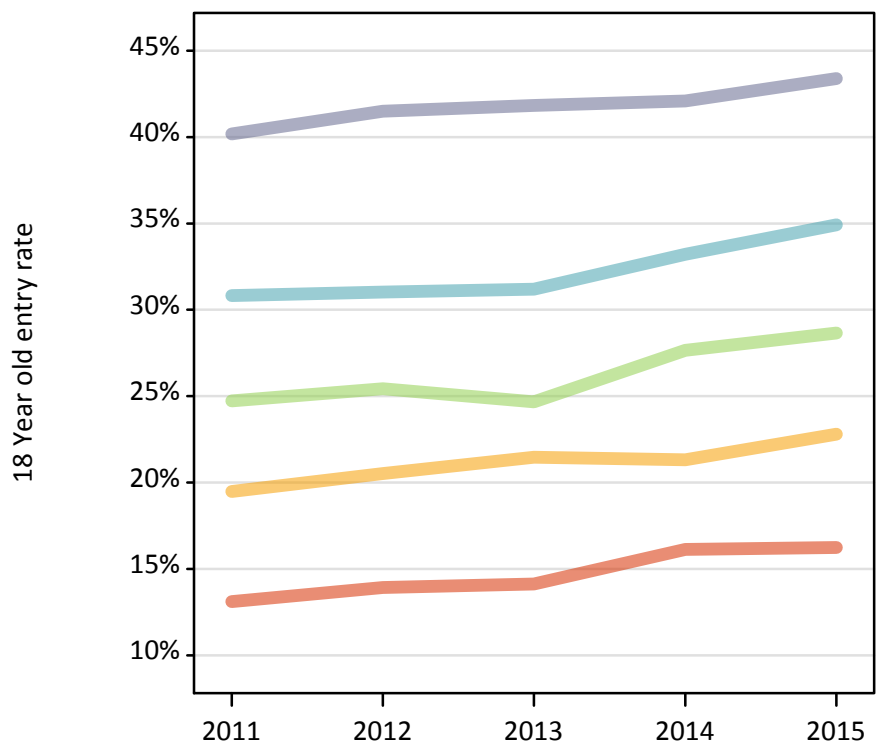
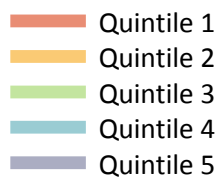
P.21 Placed 18 year old applicants from Wales by POLAR3 quintile: 13 days after A level results day

Placed 18 year old applicants: change relative to 2014 cycle totals

Applicant Status	POLAR3	2011	2012	2013	2014	2015
Placed	Quintile 1	-18%	-13%	-14%	0%	-0%
	Quintile 2	-5%	0%	2%	0%	9%
	Quintile 3	-8%	-4%	-9%	0%	2%
	Quintile 4	-2%	-2%	-3%	0%	9%
	Quintile 5	-3%	-1%	-0%	0%	2%

P.22 Placed 18 year old applicants from Wales by POLAR3 quintile: 13 days after A level results day

Placed 18 year old applicants: entry rate



P.23 Placed 18 year old applicants from Wales by POLAR3 quintile: 13 days after A level results day

Placed 18 year old applicants: entry rate

Applicant Status	POLAR3	2011	2012	2013	2014	2015
Placed	Quintile 1	13.1%	13.9%	14.1%	16.1%	16.2%
	Quintile 2	19.5%	20.5%	21.5%	21.3%	22.8%
	Quintile 3	24.7%	25.4%	24.7%	27.6%	28.7%
	Quintile 4	30.8%	31.0%	31.2%	33.2%	34.9%
	Quintile 5	40.2%	41.5%	41.8%	42.1%	43.4%

P.24 Placed 18 year old applicants from Wales by POLAR3 quintile: 13 days after A level results day

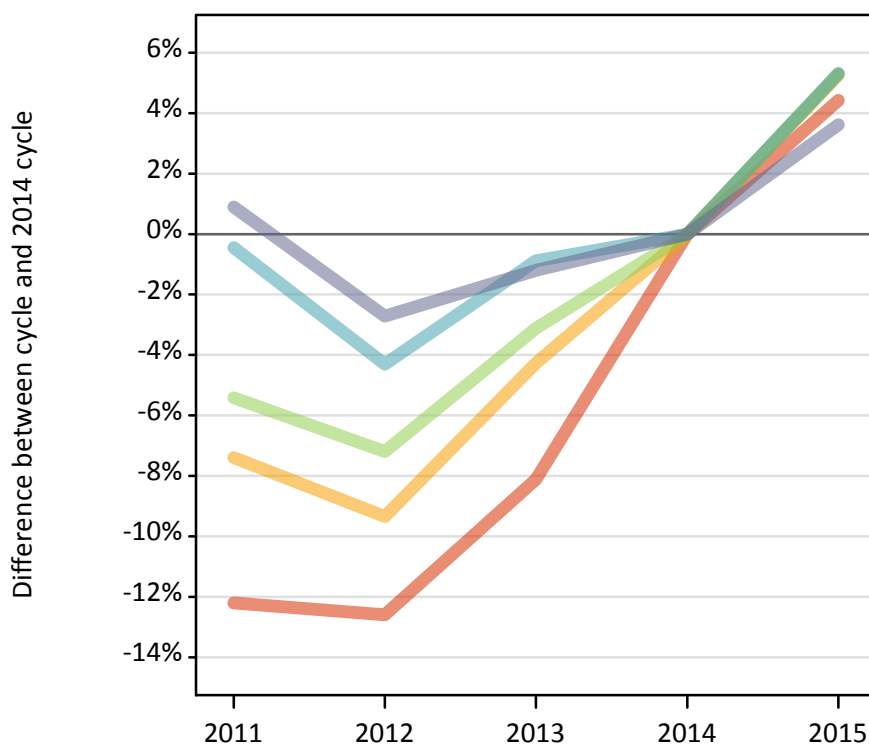
Placed 18 year old applicants: entry rate (indexed to 100 = Quintile 1)

Applicant Status	POLAR3	2011	2012	2013	2014	2015
Placed	Quintile 1	100	100	100	100	100
	Quintile 2	149	147	152	132	140
	Quintile 3	189	183	175	171	176
	Quintile 4	235	223	221	206	215
	Quintile 5	307	298	296	261	267

P.25 Placed 18 year old applicants from the UK by POLAR3 quintile: 13 days after A level results day

Placed 18 year old applicants: change relative to 2014 cycle totals

- Quintile 1
- Quintile 2
- Quintile 3
- Quintile 4
- Quintile 5



P.26 Placed 18 year old applicants from the UK by POLAR3 quintile: 13 days after A level results day

Applicant Status	POLAR3	2011	2012	2013	2014	2015
Placed	Quintile 1	20,700	20,600	21,660	23,570	24,620
	Quintile 2	31,160	30,510	32,210	33,650	35,420
	Quintile 3	40,280	39,520	41,260	42,580	44,850
	Quintile 4	51,540	49,540	51,320	51,770	54,520
	Quintile 5	71,490	68,930	70,010	70,850	73,410

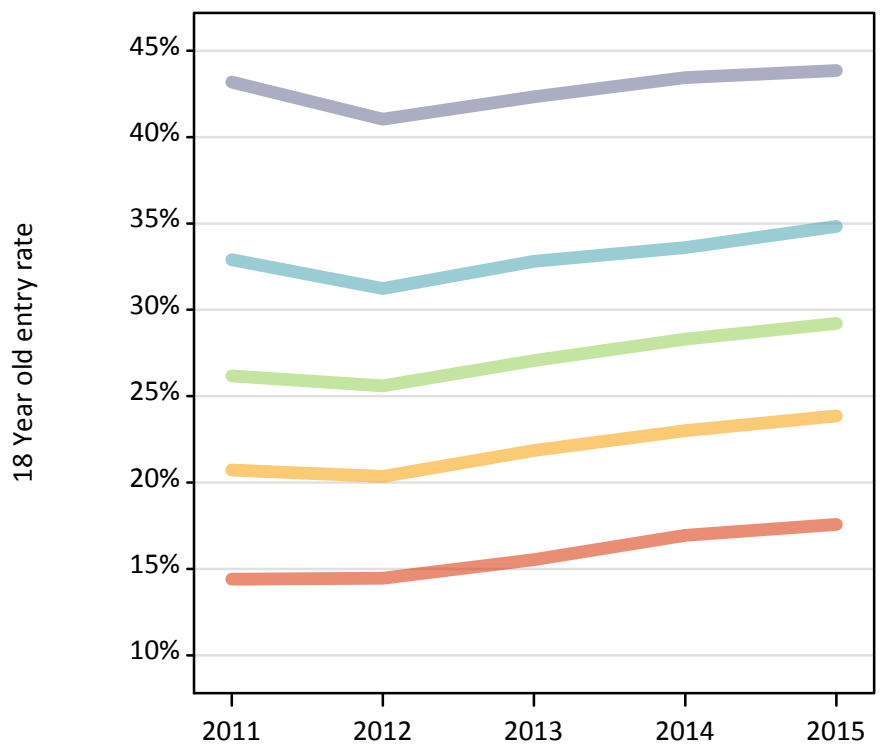
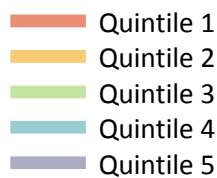
P.27 Placed 18 year old applicants from the UK by POLAR3 quintile: 13 days after A level results day

Placed 18 year old applicants: change relative to 2014 cycle totals

Applicant Status	POLAR3	2011	2012	2013	2014	2015
Placed	Quintile 1	-12%	-13%	-8%	0%	4%
	Quintile 2	-7%	-9%	-4%	0%	5%
	Quintile 3	-5%	-7%	-3%	0%	5%
	Quintile 4	-0%	-4%	-1%	0%	5%
	Quintile 5	1%	-3%	-1%	0%	4%

P.28 Placed 18 year old applicants from the UK by POLAR3 quintile: 13 days after A level results day

Placed 18 year old applicants: entry rate



P.29 Placed 18 year old applicants from the UK by POLAR3 quintile: 13 days after A level results day

Placed 18 year old applicants: entry rate

Applicant Status	POLAR3	2011	2012	2013	2014	2015
Placed	Quintile 1	14.4%	14.5%	15.5%	16.9%	17.6%
	Quintile 2	20.7%	20.3%	21.9%	23.0%	23.8%
	Quintile 3	26.2%	25.6%	27.1%	28.3%	29.2%
	Quintile 4	32.9%	31.2%	32.8%	33.6%	34.8%
	Quintile 5	43.2%	41.0%	42.3%	43.4%	43.9%

P.30 Placed 18 year old applicants from the UK by POLAR3 quintile: 13 days after A level results day

Placed 18 year old applicants: entry rate (indexed to 100 = Quintile 1)

Applicant Status	POLAR3	2011	2012	2013	2014	2015
Placed	Quintile 1	100	100	100	100	100
	Quintile 2	144	141	141	136	136
	Quintile 3	182	177	174	167	166
	Quintile 4	229	216	211	198	198
	Quintile 5	300	284	272	256	250