

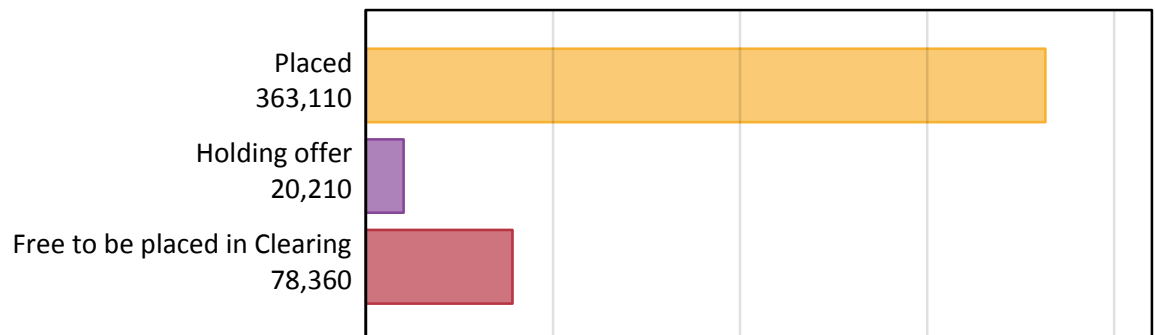
# Daily Clearing Analysis: Overview

Analysis at 00:05 on Wednesday 26 August 2015 (13 days after A level results day - No Scot.X1)

## AX.1 Applicants by type and status from England, 2015 cycle

Applicant type	Status	2015
Main scheme	Placed (Clearing)	33,080
	Placed (Adjustment)	980
	Placed (Firm)	284,510
	Placed (Insurance)	28,440
	Placed (Other)	9,310
	Holding offer	20,210
	Free to be placed in Clearing	78,360
Direct to Clearing	Placed (Direct to Clearing)	6,780
	Other (Direct to Clearing)	6,230
All applicants	Placed	363,110

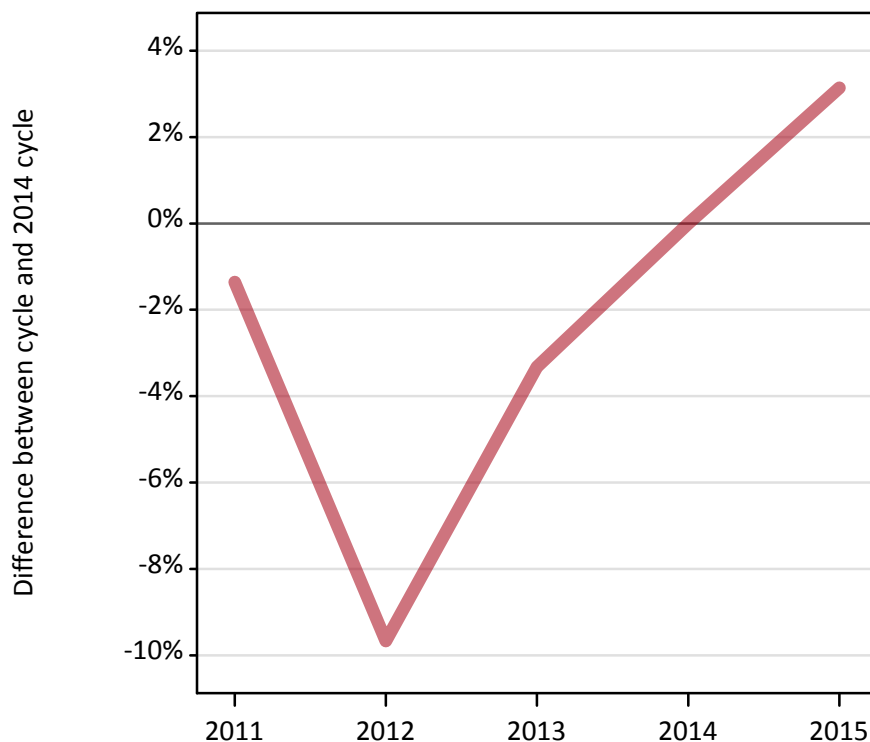
## AX.2 Summary of applicants who are placed, holding offers or free to be placed in Clearing ( England )



### AX.3 All placed applicants from England: 13 days after A level results day

All placed applicants: difference between cycle and 2014 cycle

Placed



### AX.4 All placed applicants from England: 13 days after A level results day

All placed applicants: applicants at 13 days after A level results day

Applicant type	Status	2011	2012	2013	2014	2015
All applicants	Placed	347,290	318,030	340,360	352,070	363,110

### AX.5 All placed applicants from England: 13 days after A level results day

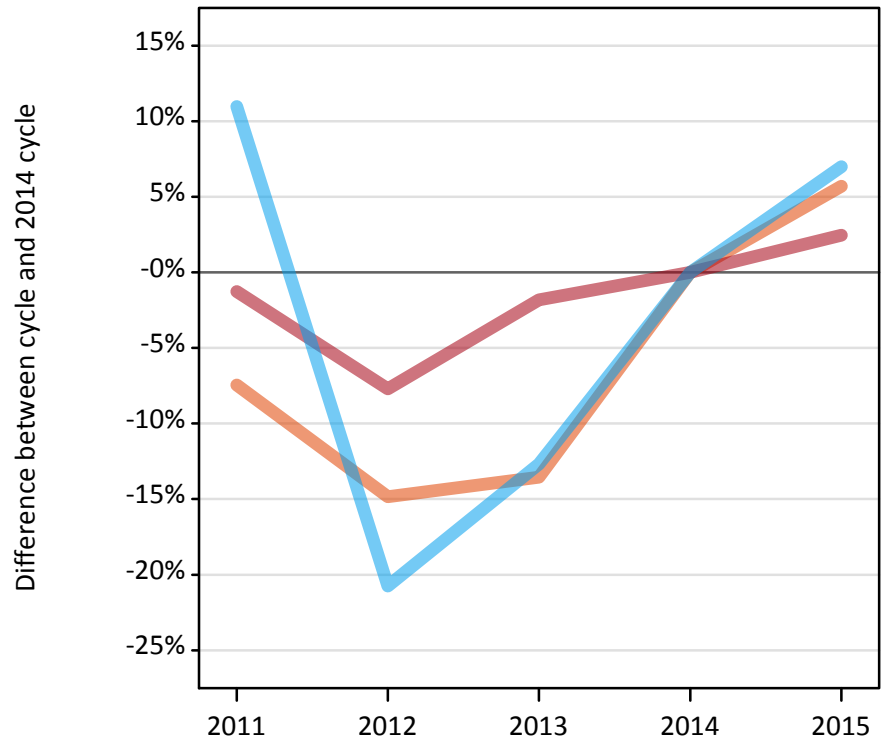
All placed applicants: difference between cycle and 2014 cycle

Applicant type	Status	2011	2012	2013	2014	2015
All applicants	Placed	-1%	-10%	-3%	0%	3%

### AX.6 Placed main scheme applicants from England: 13 days after A level results day

Selected placed routes: difference between cycle and 2014 cycle

- Placed (Clearing)
- Placed (Firm)
- Placed (Insurance)



### AX.7 Placed main scheme applicants from England: 13 days after A level results day

All Main scheme placed routes (excluding Adjustment): applicants at 13 days after A level results day

Applicant type	Status	2011	2012	2013	2014	2015
Main scheme	Placed (Clearing)	28,970	26,650	27,060	31,300	33,080
	Placed (Firm)	274,150	256,280	272,600	277,660	284,510
	Placed (Insurance)	29,490	21,060	23,200	26,580	28,440
	Placed (Other)	10,120	7,700	9,700	9,590	9,310

### AX.8 Placed main scheme applicants from England: 13 days after A level results day

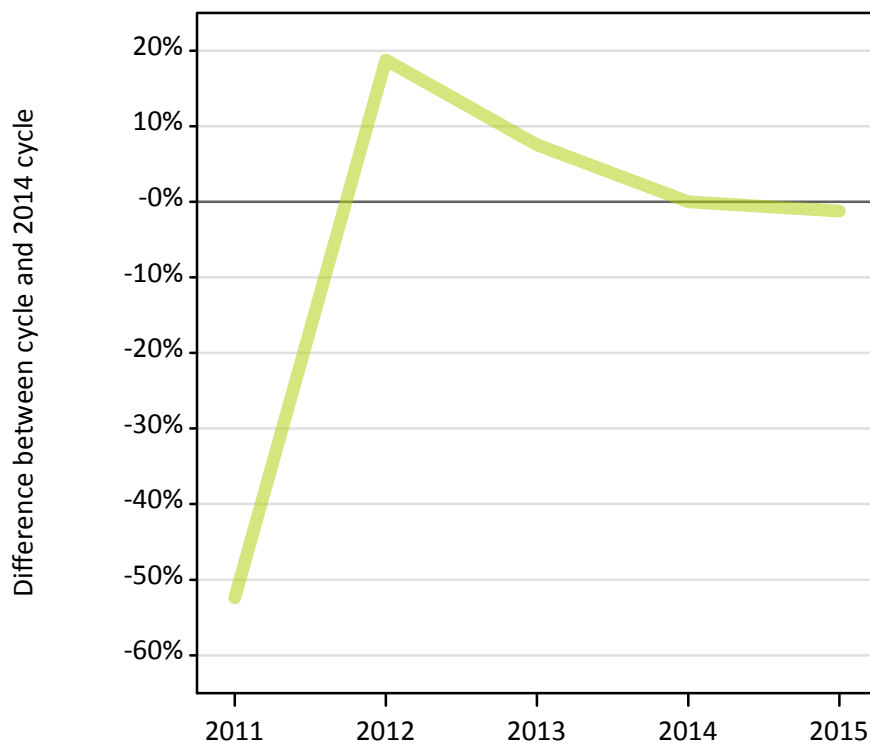
Selected placed routes: difference between cycle and 2014 cycle

Applicant type	Status	2011	2012	2013	2014	2015
Main scheme	Placed (Clearing)	-7%	-15%	-14%	0%	6%
	Placed (Firm)	-1%	-8%	-2%	0%	2%
	Placed (Insurance)	11%	-21%	-13%	0%	7%

### AX.9 Main scheme applicants placed through adjustment: 13 days after A level results day

Placed through adjustment: difference between cycle and 2014 cycle

Placed (Adjustment)



### AX.10 Main scheme applicants placed through adjustment: 13 days after A level results day

Placed through adjustment: applicants at 13 days after A level results day

Applicant type	Status	2011	2012	2013	2014	2015
Main scheme	Placed (Adjustment)	470	1,180	1,070	1,000	980

### AX.11 Main scheme applicants placed through adjustment: 13 days after A level results day

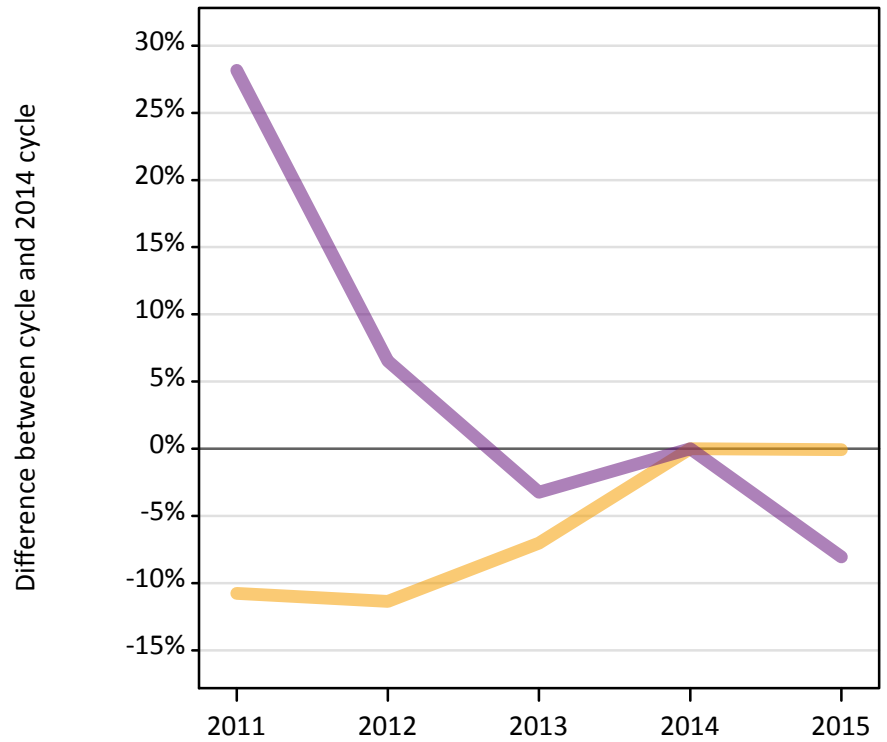
Placed through adjustment: difference between cycle and 2014 cycle

Applicant type	Status	2011	2012	2013	2014	2015
Main scheme	Placed (Adjustment)	-52%	19%	8%	0%	-1%

**AX.12 Main scheme applicants not currently placed from England: 13 days after A level results day**

Applicants in unplaced states: difference between cycle and 2014 cycle

— Holding offer  
— Free to be placed in Clearing



**AX.13 Main scheme applicants not currently placed from England: 13 days after A level results day**

Applicants in unplaced states: applicants at 13 days after A level results day

Applicant type	Status	2011	2012	2013	2014	2015
Main scheme	Holding offer	18,050	17,920	18,800	20,220	20,210
	Free to be placed in Clearing	109,230	90,790	82,450	85,220	78,360

**AX.14 Main scheme applicants not currently placed from England: 13 days after A level results day**

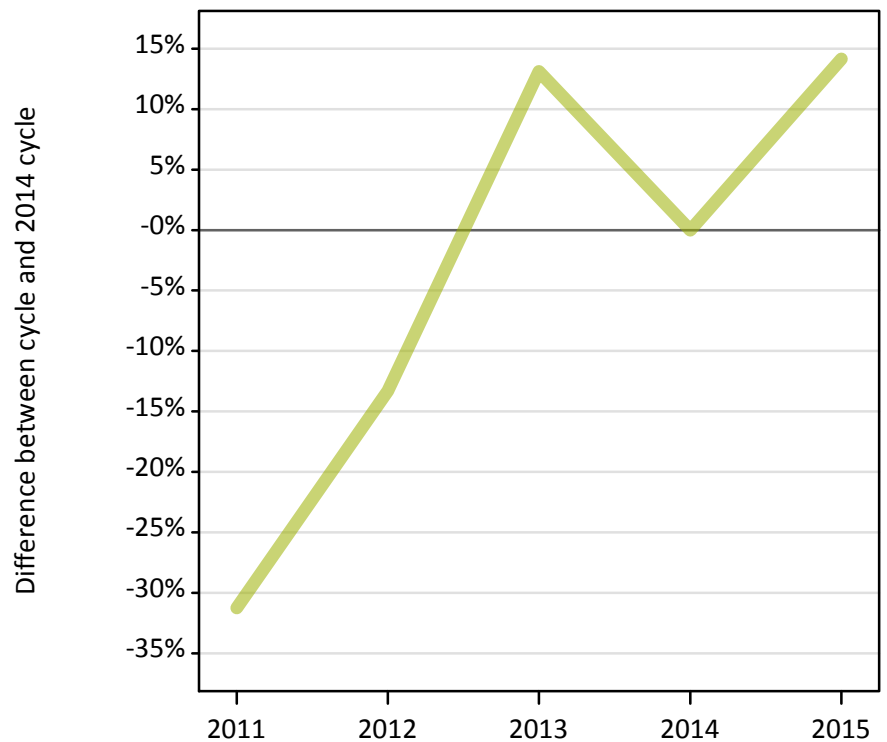
Applicants in unplaced states: difference between cycle and 2014 cycle

Applicant type	Status	2011	2012	2013	2014	2015
Main scheme	Holding offer	-11%	-11%	-7%	0%	-0%
	Free to be placed in Clearing	28%	7%	-3%	0%	-8%

**AX.15 Direct to Clearing applicants from England: 13 days after A level results day**

Placed (Direct to Clearing): difference between cycle and 2014 cycle

Placed (Direct to Clearing)

**AX.16 Direct to Clearing applicants from England: 13 days after A level results day**

Direct to Clearing 13 days after A level results day

Applicant type	Status	2011	2012	2013	2014	2015
Direct to Clearing	Placed (Direct to Clearing)	4,080	5,150	6,720	5,940	6,780
	Other (Direct to Clearing)	6,780	5,590	6,350	5,680	6,230

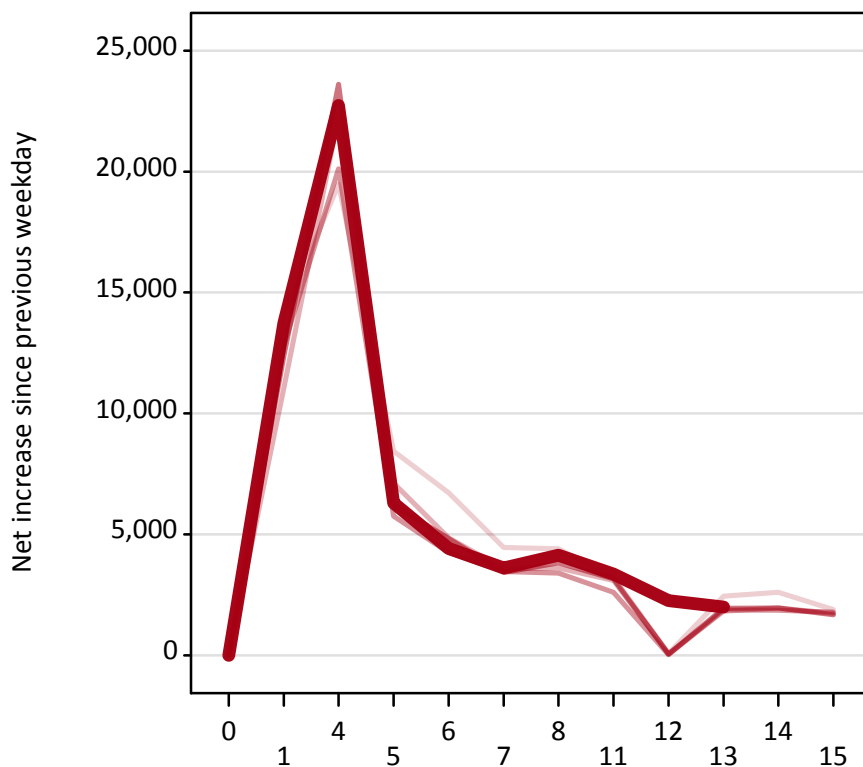
**AX.17 Direct to Clearing applicants from England: 13 days after A level results day**

Placed (Direct to Clearing): difference between cycle and 2014 cycle

Applicant type	Status	2011	2012	2013	2014	2015
Direct to Clearing	Placed (Direct to Clearing)	-31%	-13%	13%	0%	14%

### AX.18 All Placed: Daily net change (from England)

Net increase since previous weekday (2015 cycle up to 13 days after A level results day)



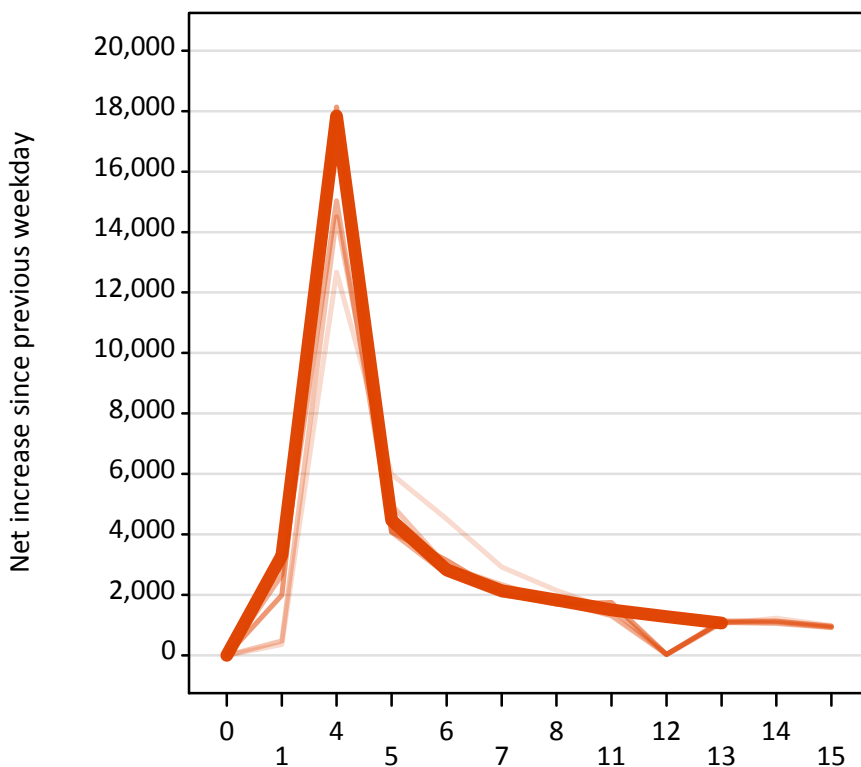
### AX.19 All Placed: Daily net change (from England)

Net increase since previous weekday (2015 cycle up to 13 days after A level results day)

Applicant status, days since A level results day		2011	2012	2013	2014	2015
All Placed	0	0	0	0	0	0
	1	14,070	11,050	12,810	12,380	13,730
	4	19,480	22,270	20,120	23,620	22,730
	5	8,440	7,120	5,750	6,220	6,300
	6	6,730	4,860	4,240	4,830	4,410
	7	4,460	3,580	3,470	3,420	3,600
	8	4,410	3,610	3,400	3,830	4,140
	11	3,230	3,090	2,610	3,160	3,360
	12	80	70	30	50	2,250
	13	2,440	1,820	1,880	1,940	2,000
	14	2,600	1,950	1,860	1,960	
	15	1,890	1,730	1,780	1,680	

### AX.20 Placed through Clearing only: Daily net change (from England)

Net increase since previous weekday (2015 cycle up to 13 days after A level results day)



### AX.21 Placed through Clearing only: Daily net change (from England)

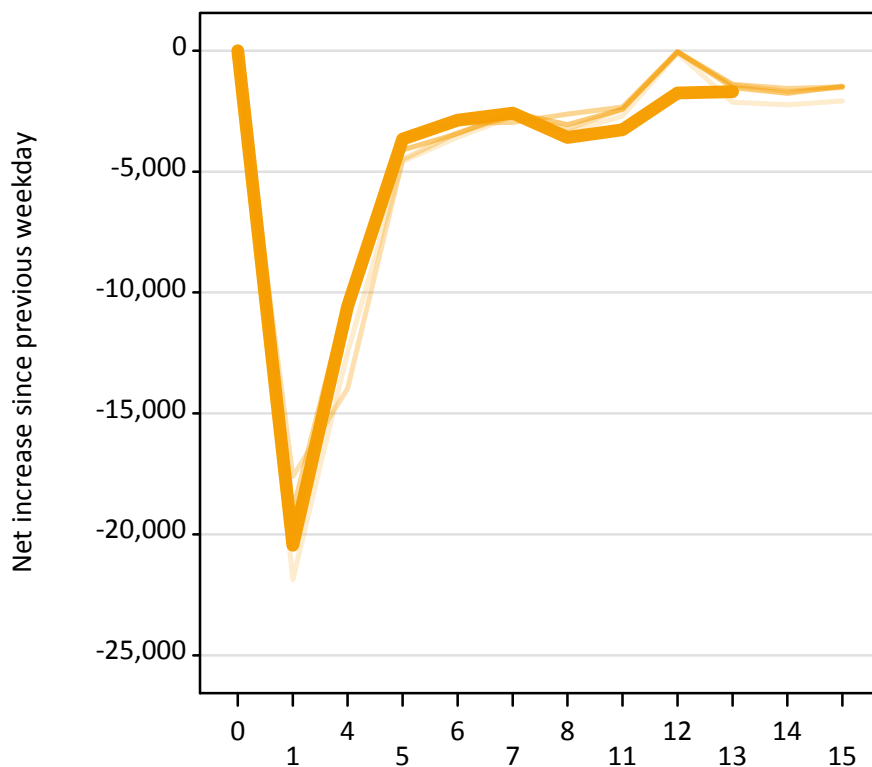
Net increase since previous weekday (2015 cycle up to 13 days after A level results day)

Applicant status, days since A level results day		2011	2012	2013	2014	2015
Placed through Clearing only	0	0	0	0	0	0
	1	360	480	2,650	1,990	3,300
	4	12,670	14,500	15,030	18,140	17,840
	5	5,990	4,980	4,070	4,080	4,470
	6	4,510	2,950	2,690	3,140	2,830
	7	2,920	2,330	1,980	2,060	2,140
	8	2,150	1,780	1,780	1,690	1,830
	11	1,500	1,570	1,310	1,740	1,510
	12	20	30	30	30	1,280
	13	1,050	1,100	1,090	1,130	1,060
	14	1,230	1,100	1,050	1,130	
	15	990	930	910	960	



### AX.22 Holding Offer: Daily net change (from England)

Net increase since previous weekday (2015 cycle up to 13 days after A level results day)



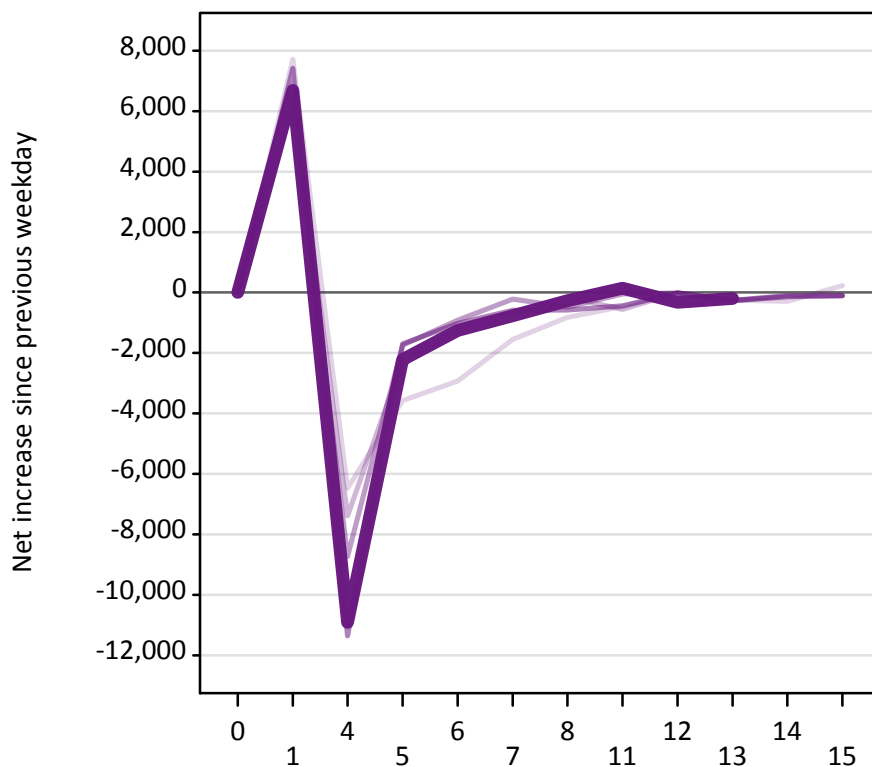
### AX.23 Holding Offer: Daily net change (from England)

Net increase since previous weekday (2015 cycle up to 13 days after A level results day)

Applicant status, days since A level results day		2011	2012	2013	2014	2015
Holding Offer	0	0	0	0	0	0
	1	-21,870	-17,600	-19,010	-19,850	-20,460
	4	-12,470	-13,980	-10,150	-11,010	-10,570
	5	-4,580	-4,500	-3,590	-4,110	-3,660
	6	-3,570	-3,390	-3,000	-3,430	-2,870
	7	-2,720	-2,690	-2,970	-2,570	-2,590
	8	-3,380	-3,250	-2,620	-3,060	-3,590
	11	-2,710	-2,410	-2,330	-2,430	-3,270
	12	-90	-90	-40	-50	-1,740
	13	-2,140	-1,410	-1,390	-1,530	-1,690
	14	-2,240	-1,680	-1,570	-1,760	
	15	-2,070	-1,520	-1,500	-1,470	

### AX.24 Free to be placed in Clearing: Daily net change (from England)

Net increase since previous weekday (2015 cycle up to 13 days after A level results day)



### AX.25 Free to be placed in Clearing: Daily net change (from England)

Net increase since previous weekday (2015 cycle up to 13 days after A level results day)

Applicant status, days since A level results day		2011	2012	2013	2014	2015
Free to be placed in Clearing	0	0	0	0	0	0
	1	7,720	6,450	6,240	7,420	6,680
	4	-6,480	-7,380	-8,730	-11,360	-10,920
	5	-3,570	-2,250	-1,750	-1,700	-2,220
	6	-2,930	-1,240	-910	-1,020	-1,260
	7	-1,560	-690	-220	-590	-770
	8	-820	-140	-480	-580	-270
	11	-470	-560	-50	-440	140
	12	-10	-10	-20	-10	-330
	13	-250	-270	-270	-260	-200
	14	-290	-150	-130	-100	
	15	220	-110	-100	-100	