

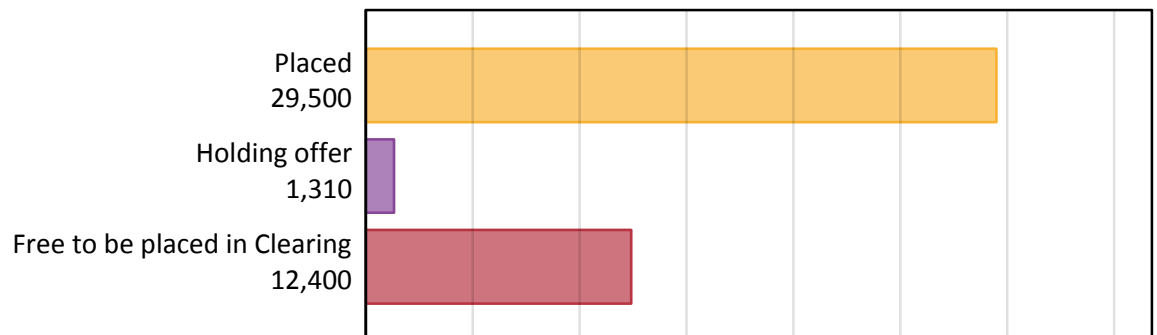
Daily Clearing Analysis: Overview

Analysis at 00:05 on Wednesday 26 August 2015 (13 days after A level results day - No Scot.X1)

AX.1 Applicants by type and status from Scotland, 2015 cycle

Applicant type	Status	2015
Main scheme	Placed (Clearing)	1,110
	Placed (Adjustment)	10
	Placed (Firm)	26,220
	Placed (Insurance)	1,480
	Placed (Other)	500
	Holding offer	1,310
	Free to be placed in Clearing	12,400
Direct to Clearing	Placed (Direct to Clearing)	180
	Other (Direct to Clearing)	360
All applicants	Placed	29,500

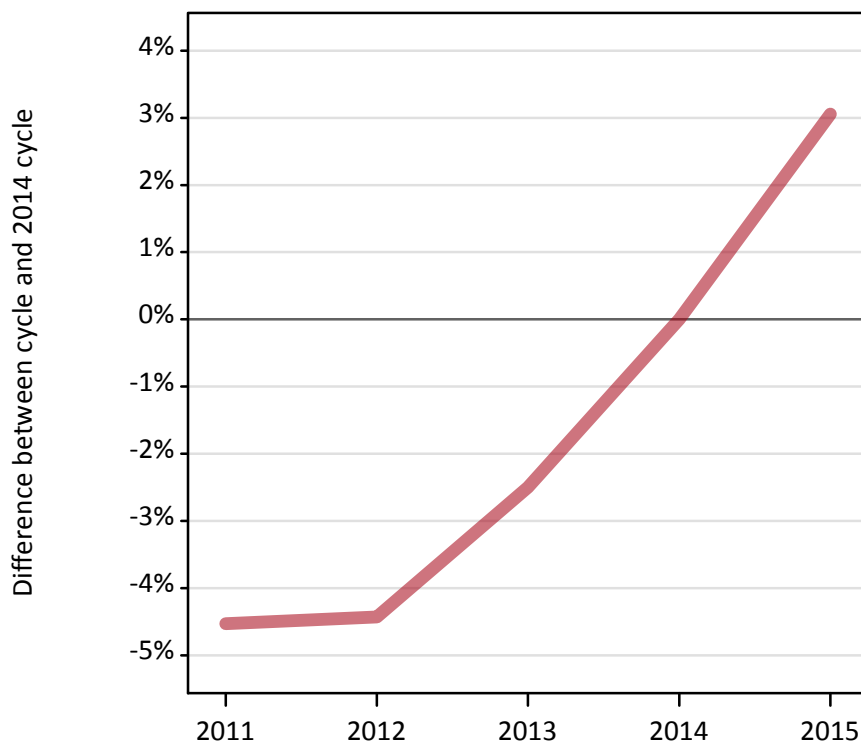
AX.2 Summary of applicants who are placed, holding offers or free to be placed in Clearing (Scotland)



AX.3 All placed applicants from Scotland: 13 days after A level results day

All placed applicants: difference between cycle and 2014 cycle

Placed



AX.4 All placed applicants from Scotland: 13 days after A level results day

All placed applicants: applicants at 13 days after A level results day

Applicant type	Status	2011	2012	2013	2014	2015
All applicants	Placed	27,330	27,350	27,910	28,620	29,500

AX.5 All placed applicants from Scotland: 13 days after A level results day

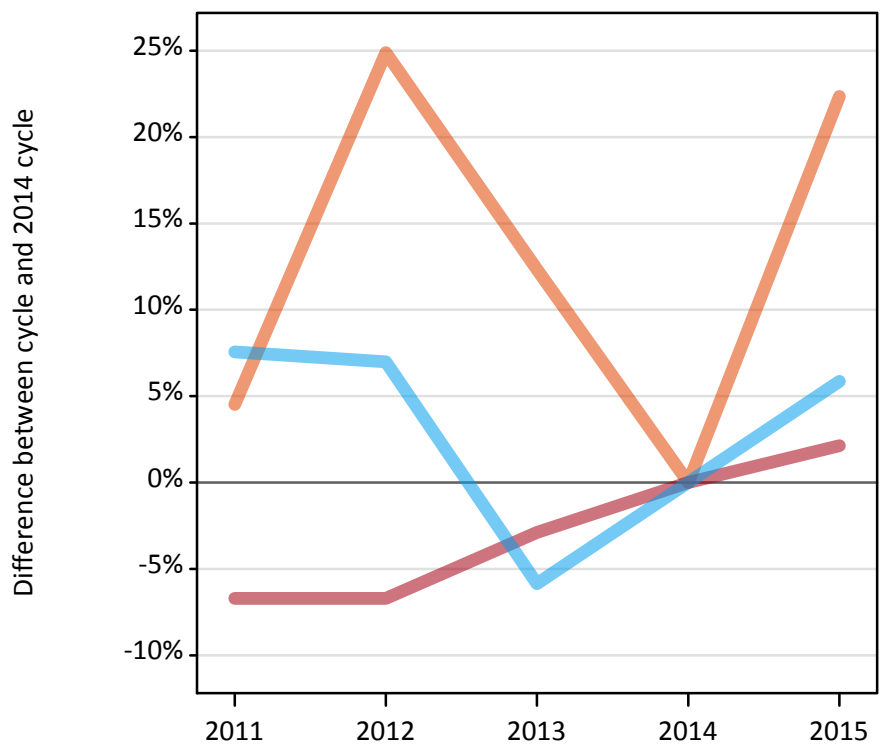
All placed applicants: difference between cycle and 2014 cycle

Applicant type	Status	2011	2012	2013	2014	2015
All applicants	Placed	-5%	-4%	-3%	0%	3%

AX.6 Placed main scheme applicants from Scotland: 13 days after A level results day

Selected placed routes: difference between cycle and 2014 cycle

- Placed (Clearing)
- Placed (Firm)
- Placed (Insurance)



AX.7 Placed main scheme applicants from Scotland: 13 days after A level results day

All Main scheme placed routes (excluding Adjustment): applicants at 13 days after A level results day

Applicant type	Status	2011	2012	2013	2014	2015
Main scheme	Placed (Clearing)	950	1,130	1,020	910	1,110
	Placed (Firm)	23,950	23,950	24,930	25,670	26,220
	Placed (Insurance)	1,510	1,500	1,320	1,400	1,480
	Placed (Other)	790	610	480	510	500

AX.8 Placed main scheme applicants from Scotland: 13 days after A level results day

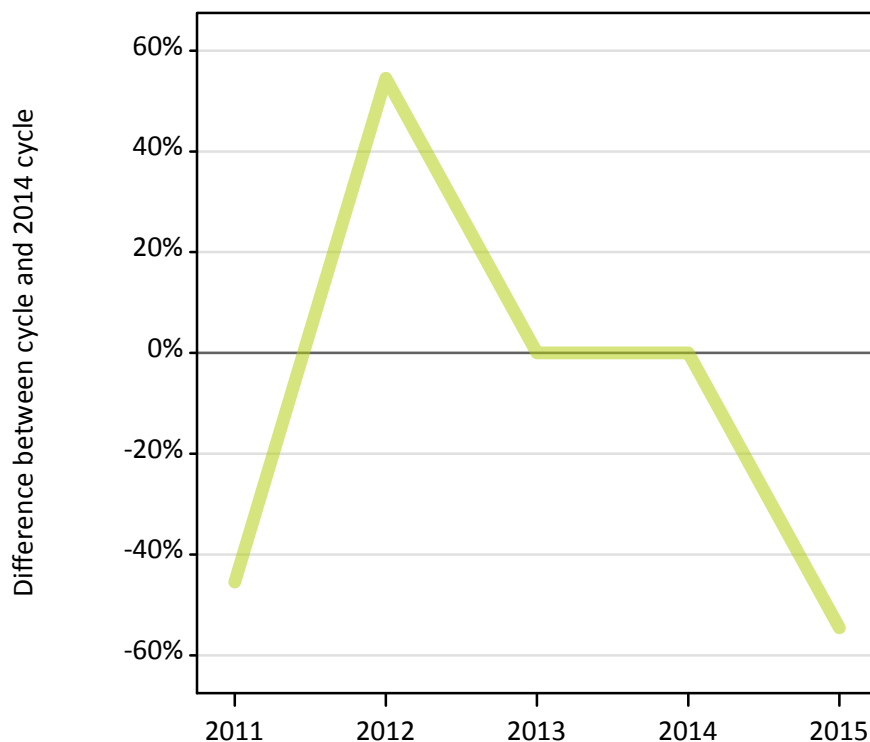
Selected placed routes: difference between cycle and 2014 cycle

Applicant type	Status	2011	2012	2013	2014	2015
Main scheme	Placed (Clearing)	5%	25%	12%	0%	22%
	Placed (Firm)	-7%	-7%	-3%	0%	2%
	Placed (Insurance)	8%	7%	-6%	0%	6%

AX.9 Main scheme applicants placed through adjustment: 13 days after A level results day

Placed through adjustment: difference between cycle and 2014 cycle

Placed (Adjustment)



AX.10 Main scheme applicants placed through adjustment: 13 days after A level results day

Placed through adjustment: applicants at 13 days after A level results day

Applicant type	Status	2011	2012	2013	2014	2015
Main scheme	Placed (Adjustment)	10	20	10	10	10

AX.11 Main scheme applicants placed through adjustment: 13 days after A level results day

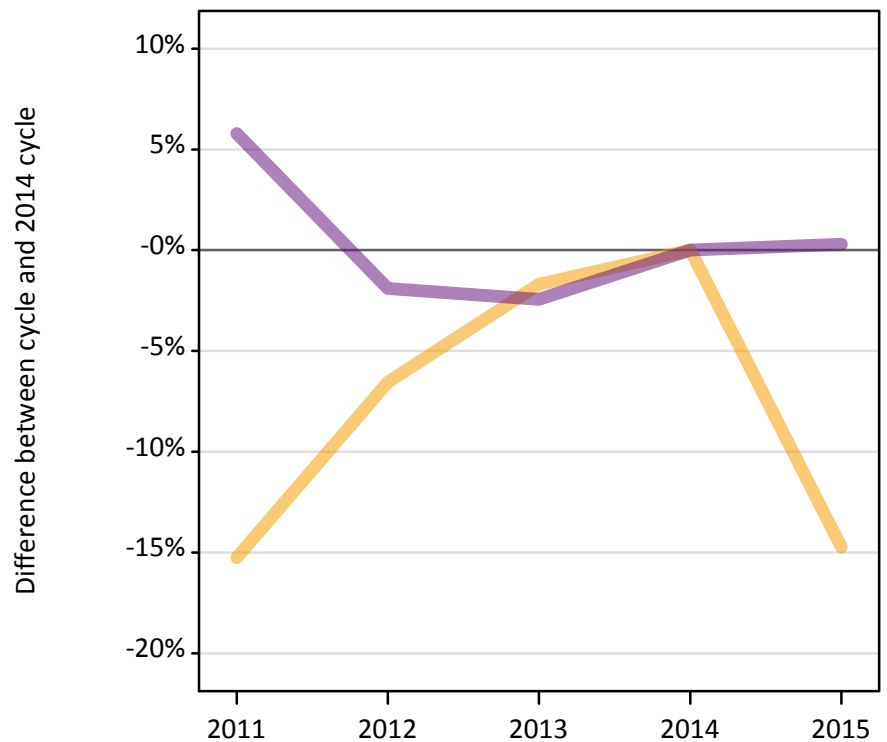
Placed through adjustment: difference between cycle and 2014 cycle

Applicant type	Status	2011	2012	2013	2014	2015
Main scheme	Placed (Adjustment)	-45%	55%	0%	0%	-55%

AX.12 Main scheme applicants not currently placed from Scotland: 13 days after A level results day

Applicants in unplaced states: difference between cycle and 2014 cycle

— Holding offer
— Free to be placed in Clearing



AX.13 Main scheme applicants not currently placed from Scotland: 13 days after A level results day

Applicants in unplaced states: applicants at 13 days after A level results day

Applicant type	Status	2011	2012	2013	2014	2015
Main scheme	Holding offer	1,310	1,440	1,520	1,540	1,310
	Free to be placed in Clearing	13,080	12,130	12,070	12,370	12,400

AX.14 Main scheme applicants not currently placed from Scotland: 13 days after A level results day

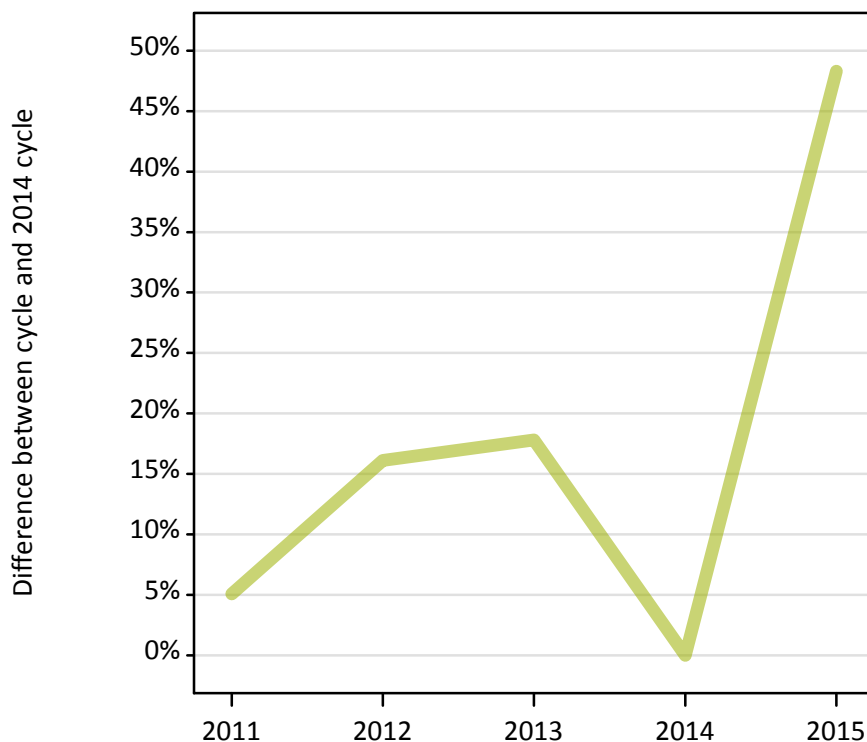
Applicants in unplaced states: difference between cycle and 2014 cycle

Applicant type	Status	2011	2012	2013	2014	2015
Main scheme	Holding offer	-15%	-7%	-2%	0%	-15%
	Free to be placed in Clearing	6%	-2%	-2%	0%	0%

AX.15 Direct to Clearing applicants from Scotland: 13 days after A level results day

Placed (Direct to Clearing): difference between cycle and 2014 cycle

Placed (Direct to Clearing)



AX.16 Direct to Clearing applicants from Scotland: 13 days after A level results day

Direct to Clearing 13 days after A level results day

Applicant type	Status	2011	2012	2013	2014	2015
Direct to Clearing	Placed (Direct to Clearing)	120	140	140	120	180
	Other (Direct to Clearing)	240	280	280	260	360

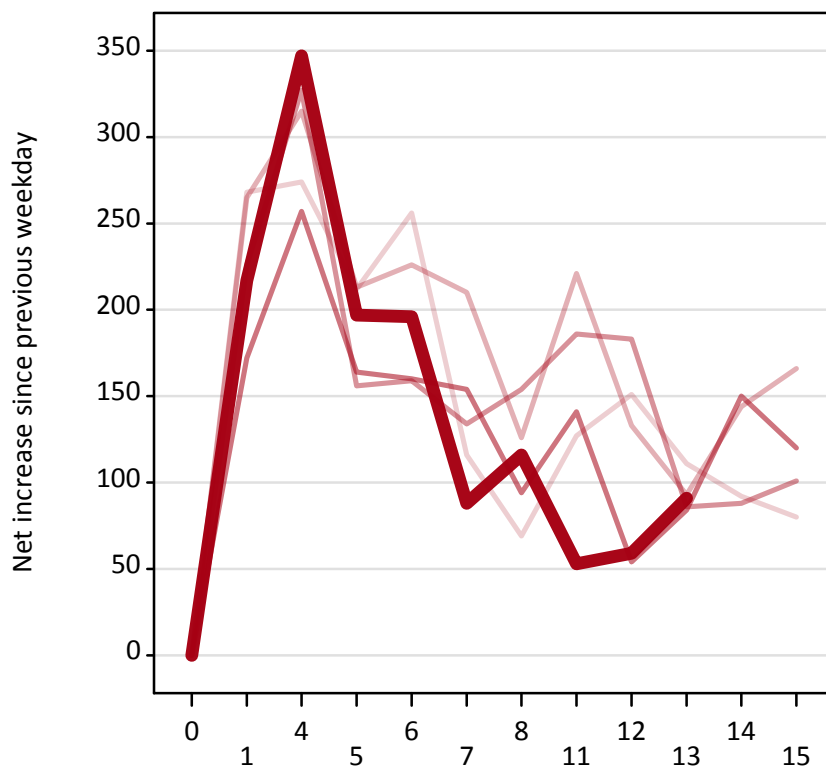
AX.17 Direct to Clearing applicants from Scotland: 13 days after A level results day

Placed (Direct to Clearing): difference between cycle and 2014 cycle

Applicant type	Status	2011	2012	2013	2014	2015
Direct to Clearing	Placed (Direct to Clearing)	5%	16%	18%	0%	48%

AX.18 All Placed: Daily net change (from Scotland)

Net increase since previous weekday (2015 cycle up to 13 days after A level results day)



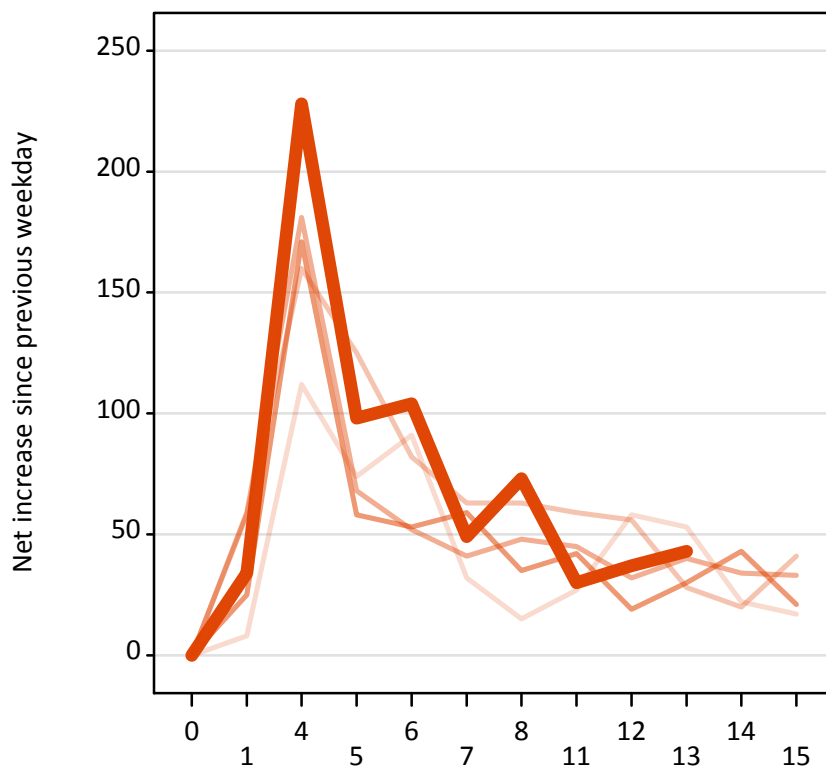
AX.19 All Placed: Daily net change (from Scotland)

Net increase since previous weekday (2015 cycle up to 13 days after A level results day)

Applicant status, days since A level results day		2011	2012	2013	2014	2015
All Placed	0	0	0	0	0	0
	1	270	270	230	170	220
	4	270	320	330	260	350
	5	210	210	160	160	200
	6	260	230	160	160	200
	7	120	210	130	150	90
	8	70	130	150	90	120
	11	130	220	190	140	50
	12	150	130	180	50	60
	13	110	90	90	80	90
	14	90	140	90	150	
	15	80	170	100	120	

AX.20 Placed through Clearing only: Daily net change (from Scotland)

Net increase since previous weekday (2015 cycle up to 13 days after A level results day)



AX.21 Placed through Clearing only: Daily net change (from Scotland)

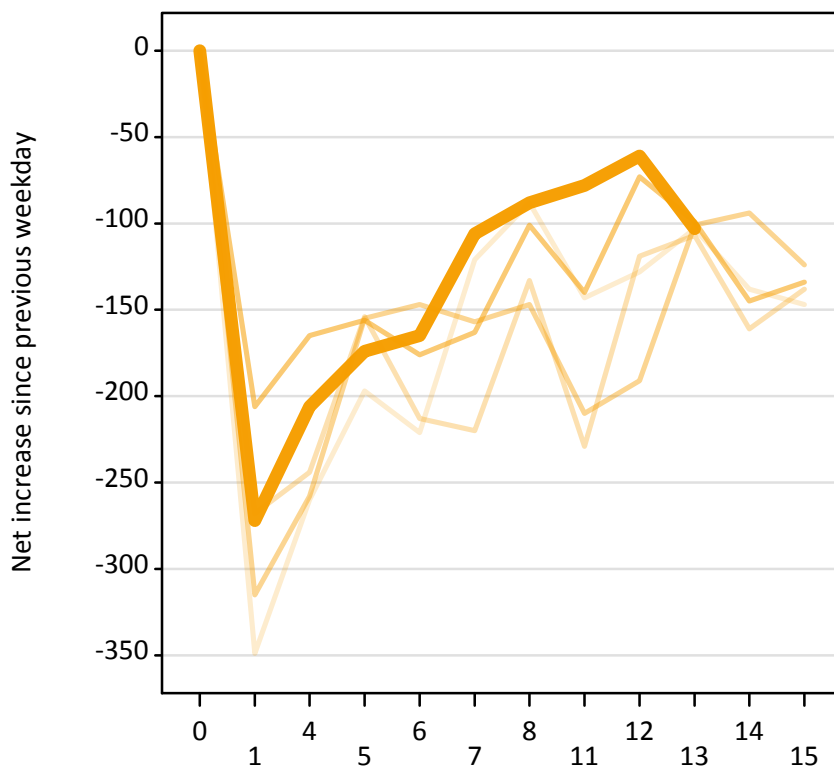
Net increase since previous weekday (2015 cycle up to 13 days after A level results day)

Applicant status, days since A level results day		2011	2012	2013	2014	2015
Placed through Clearing only	0	0	0	0	0	0
	1	10	60	60	30	30
	4	110	160	180	170	230
	5	70	130	70	60	100
	6	90	80	50	50	100
	7	30	60	40	60	50
	8	20	60	50	40	70
	11	30	60	50	40	30
	12	60	60	30	20	40
	13	50	30	40	30	40
	14	20	20	30	40	
	15	20	40	30	20	

AX.22 Holding Offer: Daily net change (from Scotland)

Net increase since previous weekday (2015 cycle up to 13 days after A level results day)

- 2011
- 2012
- 2013
- 2014
- 2015



AX.23 Holding Offer: Daily net change (from Scotland)

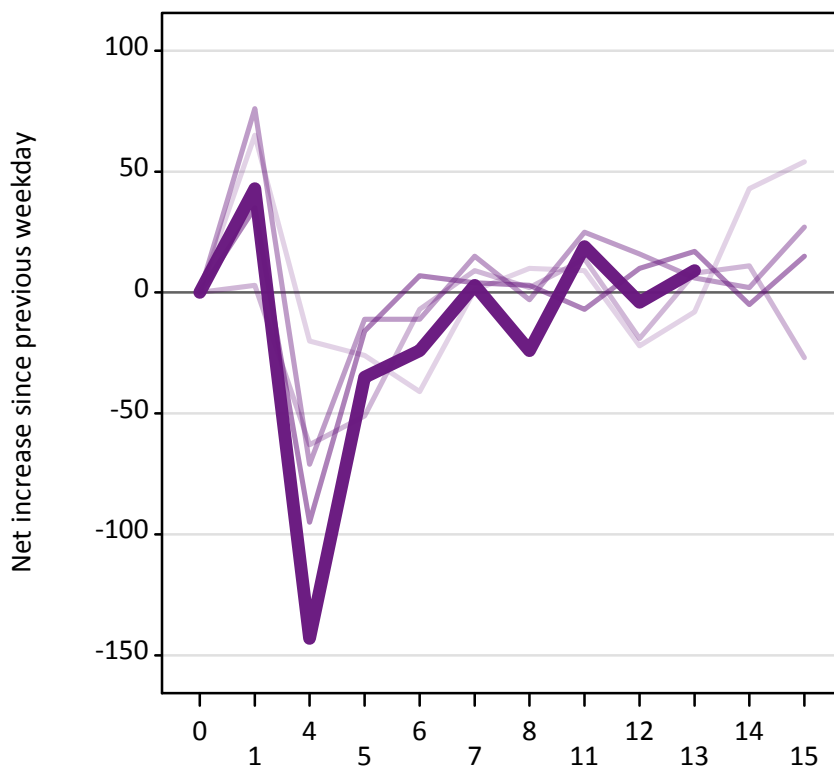
Net increase since previous weekday (2015 cycle up to 13 days after A level results day)

Applicant status, days since A level results day		2011	2012	2013	2014	2015
Holding Offer	0	0	0	0	0	0
	1	-350	-270	-320	-210	-270
	4	-260	-240	-260	-170	-210
	5	-200	-150	-160	-160	-170
	6	-220	-210	-150	-180	-170
	7	-120	-220	-160	-160	-110
	8	-90	-130	-150	-100	-90
	11	-140	-230	-210	-140	-80
	12	-130	-120	-190	-70	-60
	13	-100	-110	-100	-100	-100
	14	-140	-160	-90	-150	
	15	-150	-140	-120	-130	

AX.24 Free to be placed in Clearing: Daily net change (from Scotland)

Net increase since previous weekday (2015 cycle up to 13 days after A level results day)

- 2011
- 2012
- 2013
- 2014
- 2015



AX.25 Free to be placed in Clearing: Daily net change (from Scotland)

Net increase since previous weekday (2015 cycle up to 13 days after A level results day)

Applicant status, days since A level results day		2011	2012	2013	2014	2015
Free to be placed in Clearing	0	0	0	0	0	0
	1	70	0	80	40	40
	4	-20	-60	-70	-100	-140
	5	-30	-50	-10	-20	-40
	6	-40	-10	-10	10	-20
	7	0	10	20	0	0
	8	10	0	0	0	-20
	11	10	10	30	-10	20
	12	-20	-20	20	10	0
	13	-10	10	10	20	10
	14	40	10	0	-10	
	15	50	-30	30	20	