

# Daily Clearing Analysis: Region

Analysis at 00:05 on Thursday 27 August 2015 (14 days after A level results day)

R.1 Placed applicants by region of domicile: 14 days after A level results day

Placed applicants: change relative to 2014 cycle totals

- North East
- North West
- Yorkshire and The Humber
- East Midlands
- West Midlands
- East of England
- London
- South East
- South West



R.2 Placed applicants by region of domicile: 14 days after A level results day

Applicant Status	Domicile	2011	2012	2013	2014	2015
Placed	North East	15,670	14,080	15,450	15,230	15,910
	North West	48,900	44,370	46,520	48,050	48,480
	Yorkshire and The Humber	32,090	29,770	31,920	32,870	33,610
	East Midlands	27,080	24,910	26,670	27,800	27,590
	West Midlands	36,040	33,930	36,660	37,880	39,060
	East of England	36,460	33,240	35,660	36,620	37,660
	London	63,940	58,740	62,730	66,120	70,050
	South East	57,000	51,940	54,980	56,930	58,810
	South West	32,710	29,010	31,630	32,560	33,610
	(England total)	349,890	319,990	342,230	354,040	364,780
	Scotland	28,100	28,170	28,640	29,340	32,150
	Northern Ireland	13,600	12,830	14,210	14,200	13,870
	Wales	17,220	17,790	17,970	18,750	19,160
	UK	408,810	378,780	403,040	416,330	429,970

### R.3 Placed applicants by region of domicile: 14 days after A level results day

Placed applicants: change relative to 2014 cycle totals

Applicant Status	Domicile	2011	2012	2013	2014	2015
Placed	North East	3%	-8%	1%	0%	4%
	North West	2%	-8%	-3%	0%	1%
	Yorkshire and The Humber	-2%	-9%	-3%	0%	2%
	East Midlands	-3%	-10%	-4%	0%	-1%
	West Midlands	-5%	-10%	-3%	0%	3%
	East of England	-0%	-9%	-3%	0%	3%
	London	-3%	-11%	-5%	0%	6%
	South East	0%	-9%	-3%	0%	3%
	South West	0%	-11%	-3%	0%	3%
	(England total)	-1%	-10%	-3%	0%	3%
	Scotland	-4%	-4%	-2%	0%	10%
	Northern Ireland	-4%	-10%	0%	0%	-2%
	Wales	-8%	-5%	-4%	0%	2%
	UK	-2%	-9%	-3%	0%	3%

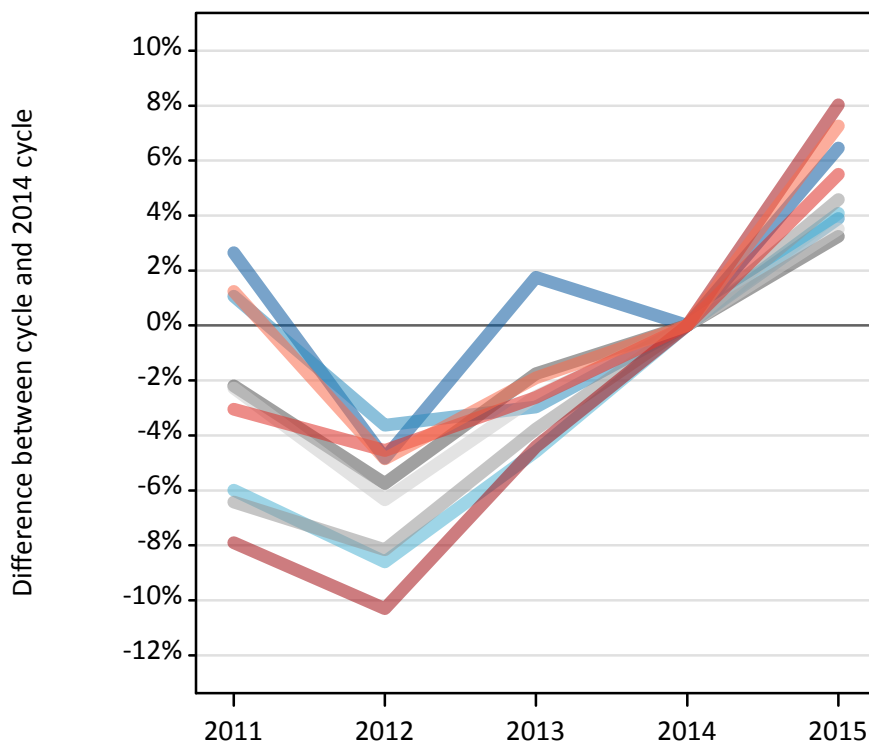
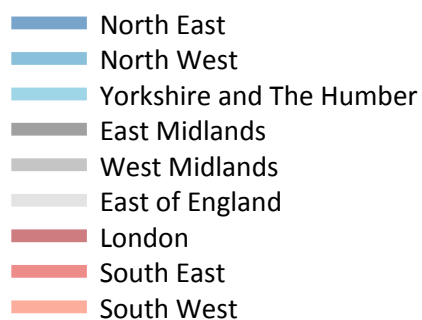
### R.4 Placed applicants by region of domicile: 14 days after A level results day

Placed applicants: absolute change relative to 2014 cycle totals

Applicant Status	Domicile	2011	2012	2013	2014	2015
Placed	North East	440	-1,140	230	0	680
	North West	860	-3,680	-1,530	0	440
	Yorkshire and The Humber	-790	-3,100	-950	0	740
	East Midlands	-710	-2,890	-1,120	0	-200
	West Midlands	-1,840	-3,950	-1,220	0	1,180
	East of England	-150	-3,380	-960	0	1,040
	London	-2,180	-7,380	-3,390	0	3,930
	South East	80	-4,980	-1,950	0	1,880
	South West	150	-3,550	-920	0	1,050
	(England total)	-4,150	-34,050	-11,820	0	10,740
	Scotland	-1,250	-1,170	-710	0	2,810
	Northern Ireland	-600	-1,370	10	0	-320
	Wales	-1,530	-960	-780	0	410
	UK	-7,520	-37,560	-13,290	0	13,640

### R.5 Placed 18 year old applicants by region of domicile: 14 days after A level results day

Placed 18 year old applicants: change relative to 2014 cycle totals



### R.6 Placed 18 year old applicants by region of domicile: 14 days after A level results day

Applicant Status	Domicile	2011	2012	2013	2014	2015
Placed	North East	8,170	7,570	8,090	7,960	8,470
	North West	26,500	25,270	25,450	26,220	27,250
	Yorkshire and The Humber	17,020	16,550	17,270	18,100	18,840
	East Midlands	14,750	14,220	14,820	15,080	15,570
	West Midlands	18,990	18,640	19,530	20,300	21,230
	East of England	20,970	20,100	20,910	21,460	22,220
	London	30,190	29,410	31,340	32,780	35,420
	South East	31,160	30,680	31,300	32,140	33,910
	South West	16,460	15,470	15,950	16,260	17,440
	(England total)	184,210	177,900	184,650	190,300	200,330
	Scotland	14,000	14,060	14,150	14,320	14,420
	Northern Ireland	8,600	8,260	8,760	8,530	8,410
	Wales	9,430	9,730	9,660	10,040	10,500
	UK	216,240	209,950	217,210	223,190	233,660

## R.7 Placed 18 year old applicants by region of domicile: 14 days after A level results day

Placed 18 year old applicants: change relative to 2014 cycle totals

Applicant Status	Domicile	2011	2012	2013	2014	2015
Placed	North East	3%	-5%	2%	0%	6%
	North West	1%	-4%	-3%	0%	4%
	Yorkshire and The Humber	-6%	-9%	-5%	0%	4%
	East Midlands	-2%	-6%	-2%	0%	3%
	West Midlands	-6%	-8%	-4%	0%	5%
	East of England	-2%	-6%	-3%	0%	4%
	London	-8%	-10%	-4%	0%	8%
	South East	-3%	-5%	-3%	0%	6%
	South West	1%	-5%	-2%	0%	7%
	(England total)	-3%	-7%	-3%	0%	5%
	Scotland	-2%	-2%	-1%	0%	1%
	Northern Ireland	1%	-3%	3%	0%	-1%
	Wales	-6%	-3%	-4%	0%	5%
	UK	-3%	-6%	-3%	0%	5%

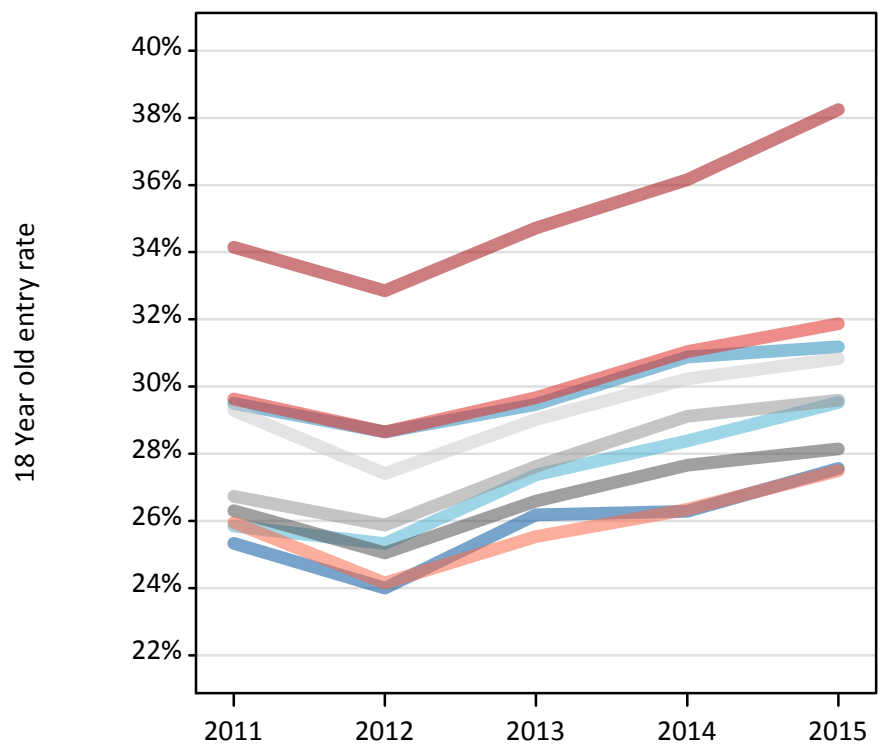
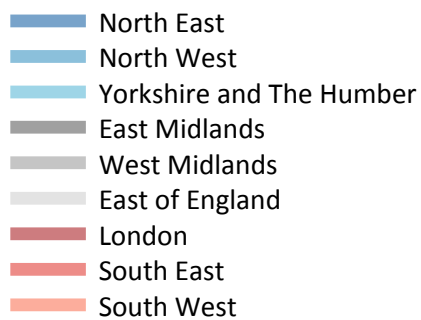
## R.8 Placed 18 year old applicants by region of domicile: 14 days after A level results day

Placed 18 year old applicants: absolute change relative to 2014 cycle totals

Applicant Status	Domicile	2011	2012	2013	2014	2015
Placed	North East	210	-380	140	0	510
	North West	280	-950	-780	0	1,020
	Yorkshire and The Humber	-1,090	-1,560	-830	0	740
	East Midlands	-330	-870	-260	0	490
	West Midlands	-1,300	-1,660	-770	0	930
	East of England	-490	-1,360	-550	0	750
	London	-2,590	-3,380	-1,450	0	2,630
	South East	-980	-1,460	-840	0	1,770
	South West	200	-790	-310	0	1,180
	(England total)	-6,090	-12,410	-5,650	0	10,030
	Scotland	-310	-250	-170	0	100
	Northern Ireland	70	-270	230	0	-120
	Wales	-620	-320	-390	0	460
	UK	-6,950	-13,250	-5,980	0	10,470

### R.9 Placed 18 year old applicants by region of domicile: 14 days after A level results day

Placed 18 year old applicants: entry rate



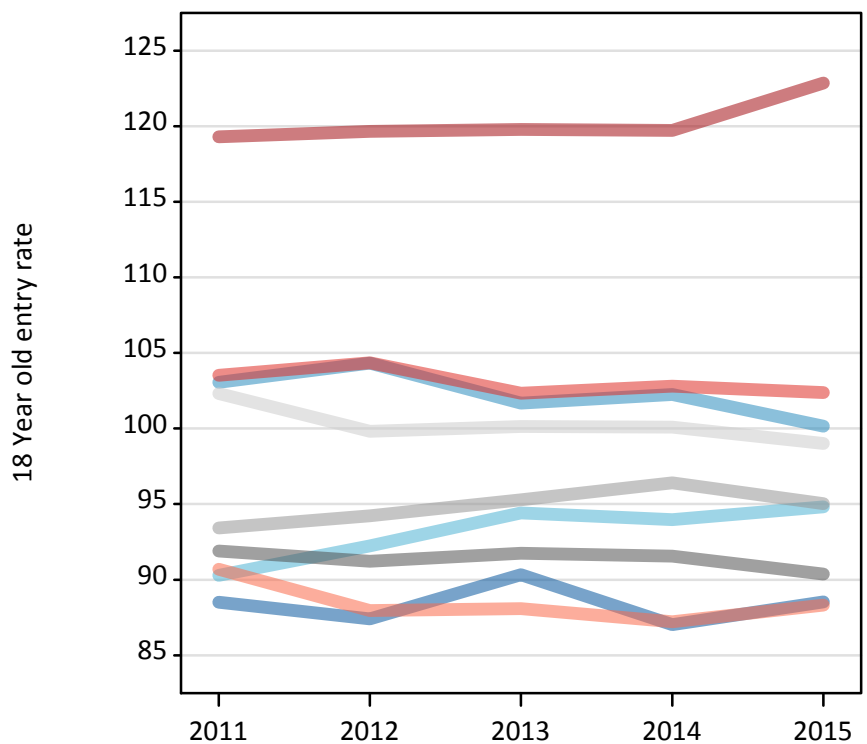
### R.10 Placed 18 year old applicants by region of domicile: 14 days after A level results day

Placed 18 year old applicants: entry rate

Applicant Status	Domicile	2011	2012	2013	2014	2015
Placed	North East	25.3%	24.0%	26.2%	26.3%	27.6%
	North West	29.5%	28.6%	29.5%	30.9%	31.2%
	Yorkshire and The Humber	25.8%	25.3%	27.4%	28.4%	29.5%
	East Midlands	26.3%	25.0%	26.6%	27.7%	28.1%
	West Midlands	26.7%	25.9%	27.6%	29.1%	29.6%
	East of England	29.3%	27.4%	29.0%	30.2%	30.8%
	London	34.1%	32.9%	34.7%	36.2%	38.2%
	South East	29.6%	28.7%	29.7%	31.0%	31.9%
	South West	26.0%	24.1%	25.5%	26.3%	27.5%
	(England total)	28.6%	27.5%	29.0%	30.2%	31.1%
	Scotland	22.3%	22.7%	23.0%	23.4%	24.0%
	Northern Ireland	34.4%	32.9%	35.7%	35.2%	33.9%
	Wales	24.4%	25.2%	25.5%	26.8%	27.9%
	UK	28.1%	27.1%	28.5%	29.6%	30.5%

### R.11 Placed 18 year old applicants by region of domicile: 14 days after A level results day

Placed 18 year old applicants: entry rates (indexed to 100 = England)



### R.12 Placed 18 year old applicants by region of domicile: 14 days after A level results day

Placed 18 year old applicants: entry rate (indexed to 100 = England)

Applicant Status	Domicile	2011	2012	2013	2014	2015
Placed	North East	89	87	90	87	89
	North West	103	104	102	102	100
	Yorkshire and The Humber	90	92	94	94	95
	East Midlands	92	91	92	92	90
	West Midlands	93	94	95	96	95
	East of England	102	100	100	100	99
	London	119	120	120	120	123
	South East	104	104	102	103	102
	South West	91	88	88	87	88
	(England total)	100	100	100	100	100