

Daily Clearing Analysis: Sex

Analysis at 00:05 on Friday 28 August 2015 (15 days after A level results day - No Scot.X1)

SX.1 Placed applicants from all domiciles by sex: 15 days after A level results day

Placed applicants: change relative to 2014 cycle totals

Men
Women



SX.2 Placed applicants from all domiciles by sex: 15 days after A level results day

Applicant Status	Sex	2011	2012	2013	2014	2015
Placed	Men	209,050	192,120	205,090	210,180	214,720
	Women	254,800	239,570	253,980	265,750	276,590
	All	463,840	431,690	459,080	475,930	491,310

SX.3 Placed applicants from all domiciles by sex: 15 days after A level results day

Placed applicants: change relative to 2014 cycle totals

Applicant Status	Sex	2011	2012	2013	2014	2015
Placed	Men	-1%	-9%	-2%	0%	2%
	Women	-4%	-10%	-4%	0%	4%
	All	-3%	-9%	-4%	0%	3%

SX.4 Placed applicants from all domiciles by sex: 15 days after A level results day

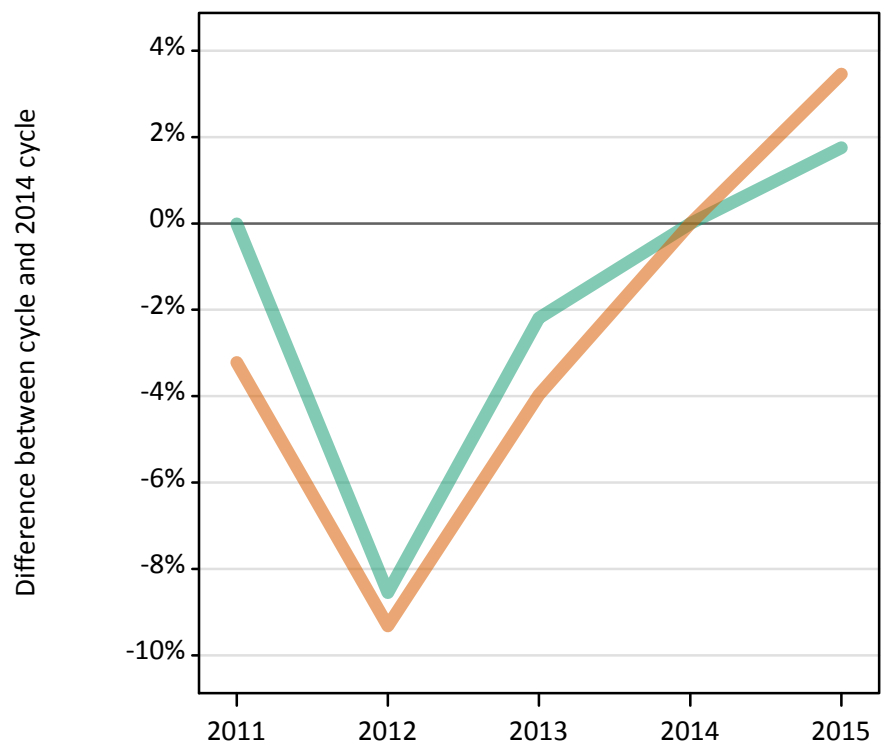
Placed applicants: absolute change relative to 2014 cycle totals

Applicant Status	Sex	2011	2012	2013	2014	2015
Placed	Men	-1,130	-18,060	-5,090	0	4,540
	Women	-10,960	-26,190	-11,770	0	10,830
	All	-12,090	-44,240	-16,860	0	15,380

SX.5 Placed applicants from the UK by sex: 15 days after A level results day

Placed applicants: change relative to 2014 cycle totals

Men
Women



SX.6 Placed applicants from the UK by sex: 15 days after A level results day

Applicant Status	Sex	2011	2012	2013	2014	2015
Placed	Men	183,850	168,140	179,840	183,870	187,090
	Women	226,290	212,030	224,540	233,820	241,900
	All	410,140	380,170	404,380	417,680	428,990

SX.7 Placed applicants from the UK by sex: 15 days after A level results day

Placed applicants: change relative to 2014 cycle totals

Applicant Status	Sex	2011	2012	2013	2014	2015
Placed	Men	-0%	-9%	-2%	0%	2%
	Women	-3%	-9%	-4%	0%	3%
	All	-2%	-9%	-3%	0%	3%

SX.8 Placed applicants from the UK by sex: 15 days after A level results day

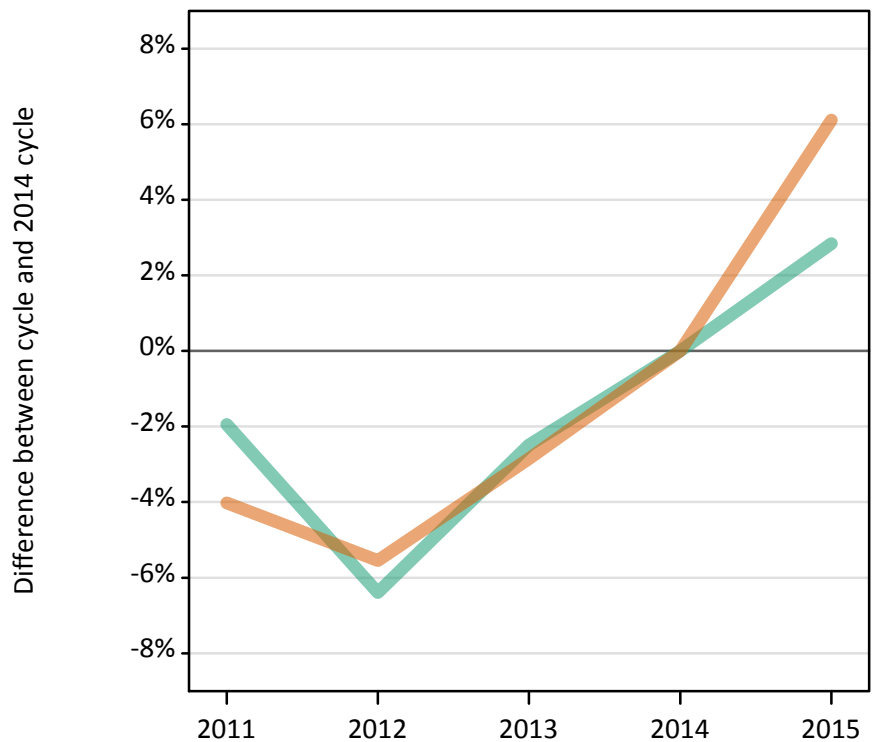
Placed applicants: absolute change relative to 2014 cycle totals

Applicant Status	Sex	2011	2012	2013	2014	2015
Placed	Men	-20	-15,730	-4,020	0	3,220
	Women	-7,520	-21,790	-9,270	0	8,080
	All	-7,540	-37,510	-13,300	0	11,310

SX.9 Placed 18 year old applicants from the UK by sex: 15 days after A level results day

Placed 18 year old applicants: change relative to 2014 cycle totals

Men
Women



SX.10 Placed 18 year old applicants from the UK by sex: 15 days after A level results day

Applicant Status	Sex	2011	2012	2013	2014	2015
Placed	Men	97,370	92,950	96,830	99,300	102,120
	Women	118,890	117,000	120,340	123,880	131,450
	All	216,260	209,950	217,160	223,170	233,560

SX.11 Placed 18 year old applicants from the UK by sex: 15 days after A level results day

Placed 18 year old applicants: change relative to 2014 cycle totals

Applicant Status	Sex	2011	2012	2013	2014	2015
Placed	Men	-2%	-6%	-2%	0%	3%
	Women	-4%	-6%	-3%	0%	6%
	All	-3%	-6%	-3%	0%	5%

SX.12 Placed 18 year old applicants from the UK by sex: 15 days after A level results day

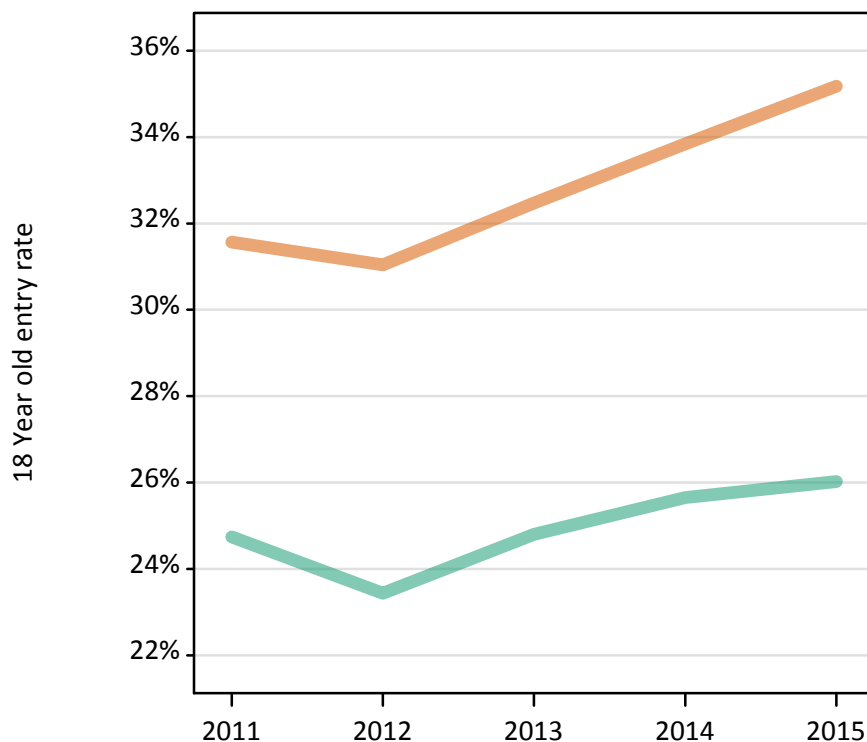
Placed 18 year old applicants: absolute change relative to 2014 cycle totals

Applicant Status	Sex	2011	2012	2013	2014	2015
Placed	Men	-1,930	-6,350	-2,470	0	2,820
	Women	-4,980	-6,870	-3,540	0	7,570
	All	-6,920	-13,220	-6,010	0	10,390

SX.13 Placed 18 year old applicants from the UK by sex: 15 days after A level results day

Placed 18 year old applicants: entry rate

Men
Women



SX.14 Placed 18 year old applicants from the UK by sex: 15 days after A level results day

Placed 18 year old applicants: entry rate

Applicant Status	Sex	2011	2012	2013	2014	2015
Placed	Men	24.7%	23.4%	24.8%	25.7%	26.0%
	Women	31.6%	31.0%	32.5%	33.8%	35.2%
	All	28.1%	27.1%	28.5%	29.6%	30.5%

SX.15 Placed 18 year old applicants from the UK by sex: 15 days after A level results day

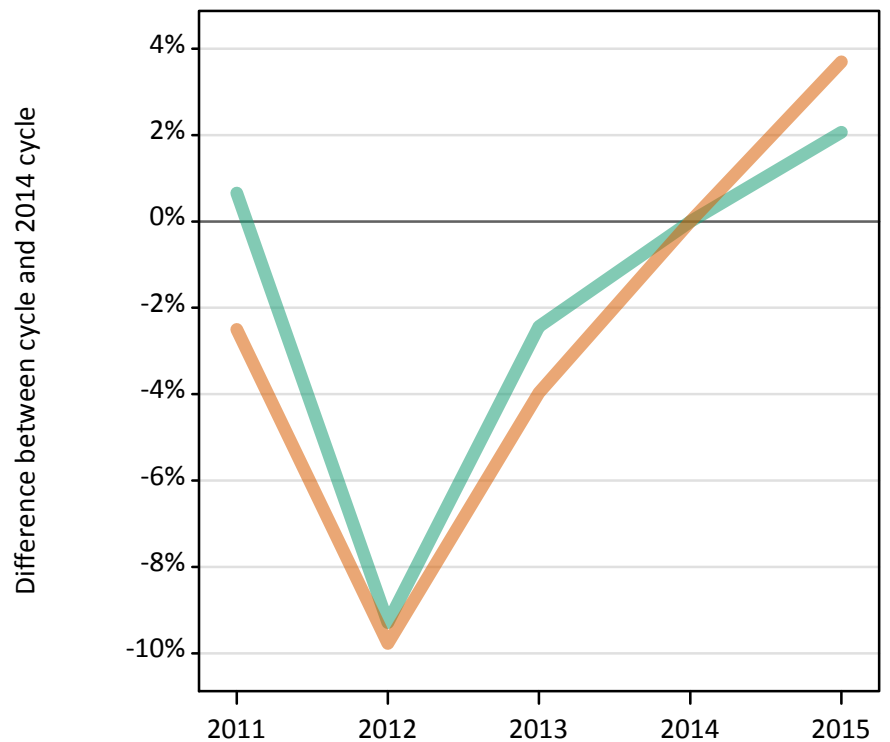
Placed 18 year old applicants: entry rate (indexed to 100 = Men)

Applicant Status	Sex	2011	2012	2013	2014	2015
Placed	Men	100	100	100	100	100
	Women	128	132	131	132	135

SX.16 Placed applicants from England by sex: 15 days after A level results day

Placed applicants: change relative to 2014 cycle totals

Men
Women



SX.17 Placed applicants from England by sex: 15 days after A level results day

Applicant Status	Sex	2011	2012	2013	2014	2015
Placed	Men	158,280	142,640	153,420	157,250	160,500
	Women	193,500	179,060	190,580	198,460	205,790
	All	351,780	321,700	344,000	355,710	366,290

SX.18 Placed applicants from England by sex: 15 days after A level results day

Placed applicants: change relative to 2014 cycle totals

Applicant Status	Sex	2011	2012	2013	2014	2015
Placed	Men	1%	-9%	-2%	0%	2%
	Women	-2%	-10%	-4%	0%	4%
	All	-1%	-10%	-3%	0%	3%

SX.19 Placed applicants from England by sex: 15 days after A level results day

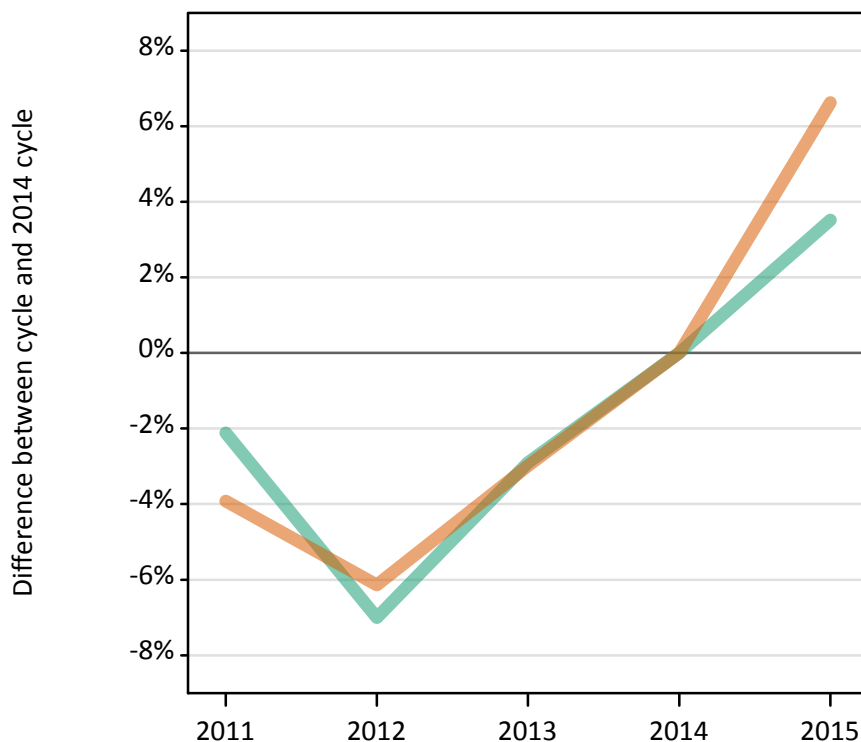
Placed applicants: absolute change relative to 2014 cycle totals

Applicant Status	Sex	2011	2012	2013	2014	2015
Placed	Men	1,030	-14,610	-3,830	0	3,250
	Women	-4,960	-19,400	-7,880	0	7,330
	All	-3,930	-34,010	-11,710	0	10,580

SX.20 Placed 18 year old applicants from England by sex: 15 days after A level results day

Placed 18 year old applicants: change relative to 2014 cycle totals

Men
Women



SX.21 Placed 18 year old applicants from England by sex: 15 days after A level results day

Applicant Status	Sex	2011	2012	2013	2014	2015
Placed	Men	83,390	79,230	82,720	85,200	88,200
	Women	101,260	98,930	102,240	105,390	112,380
	All	184,660	178,160	184,960	190,590	200,580

SX.22 Placed 18 year old applicants from England by sex: 15 days after A level results day

Placed 18 year old applicants: change relative to 2014 cycle totals

Applicant Status	Sex	2011	2012	2013	2014	2015
Placed	Men	-2%	-7%	-3%	0%	4%
	Women	-4%	-6%	-3%	0%	7%
	All	-3%	-7%	-3%	0%	5%

SX.23 Placed 18 year old applicants from England by sex: 15 days after A level results day

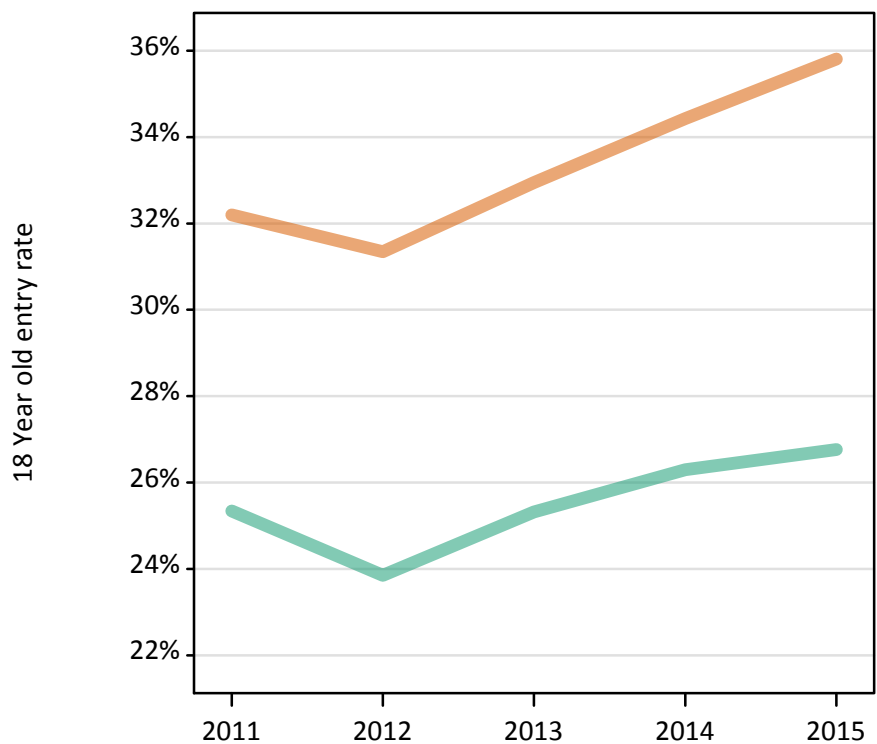
Placed 18 year old applicants: absolute change relative to 2014 cycle totals

Applicant Status	Sex	2011	2012	2013	2014	2015
Placed	Men	-1,810	-5,970	-2,480	0	3,000
	Women	-4,130	-6,470	-3,150	0	6,990
	All	-5,940	-12,430	-5,630	0	9,990

SX.24 Placed 18 year old applicants from England by sex: 15 days after A level results day

Placed 18 year old applicants: entry rate

Men
Women



SX.25 Placed 18 year old applicants from England by sex: 15 days after A level results day

Placed 18 year old applicants: entry rate

Applicant Status	Sex	2011	2012	2013	2014	2015
Placed	Men	25.3%	23.8%	25.3%	26.3%	26.8%
	Women	32.2%	31.3%	32.9%	34.4%	35.8%
	All	28.7%	27.5%	29.0%	30.2%	31.2%

SX.26 Placed 18 year old applicants from England by sex: 15 days after A level results day

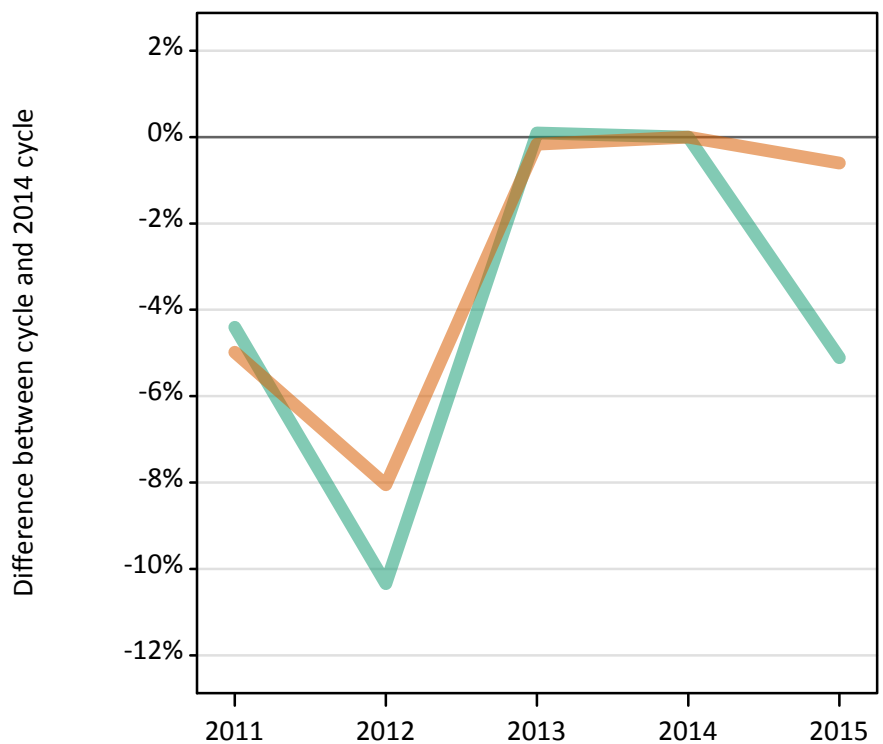
Placed 18 year old applicants: entry rate (indexed to 100 = Men)

Applicant Status	Sex	2011	2012	2013	2014	2015
Placed	Men	100	100	100	100	100
	Women	127	131	130	131	134

SX.27 Placed applicants from Northern Ireland by sex: 15 days after A level results day

Placed applicants: change relative to 2014 cycle totals

Men
Women



SX.28 Placed applicants from Northern Ireland by sex: 15 days after A level results day

Applicant Status	Sex	2011	2012	2013	2014	2015
Placed	Men	6,210	5,830	6,500	6,500	6,170
	Women	7,380	7,140	7,750	7,760	7,720
	All	13,590	12,960	14,250	14,260	13,880

SX.29 Placed applicants from Northern Ireland by sex: 15 days after A level results day

Placed applicants: change relative to 2014 cycle totals

Applicant Status	Sex	2011	2012	2013	2014	2015
Placed	Men	-4%	-10%	0%	0%	-5%
	Women	-5%	-8%	-0%	0%	-1%
	All	-5%	-9%	-0%	0%	-3%

SX.30 Placed applicants from Northern Ireland by sex: 15 days after A level results day

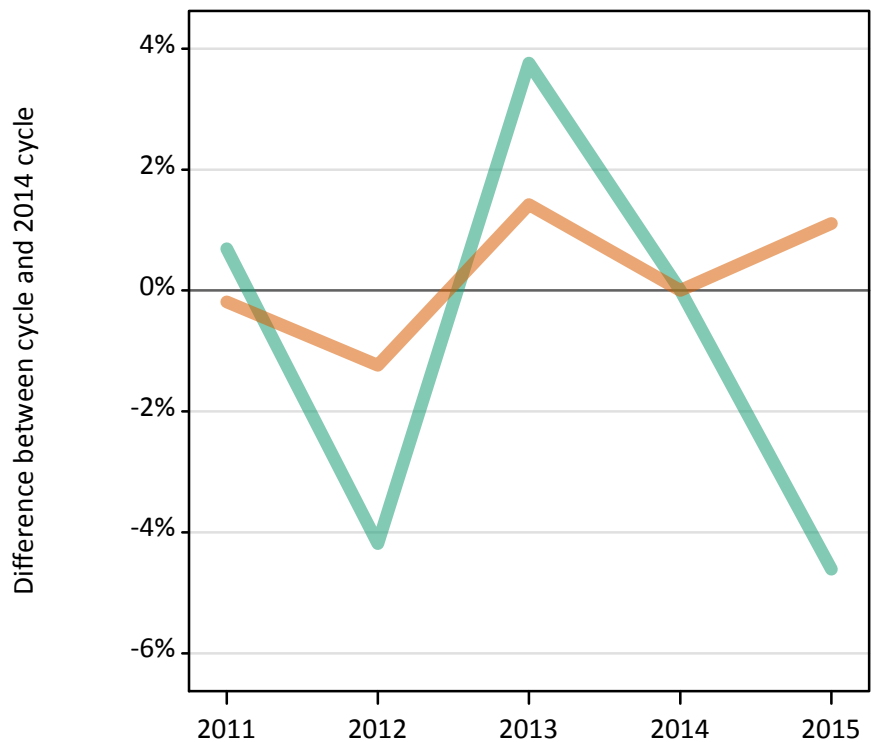
Placed applicants: absolute change relative to 2014 cycle totals

Applicant Status	Sex	2011	2012	2013	2014	2015
Placed	Men	-290	-670	10	0	-330
	Women	-390	-630	-10	0	-50
	All	-670	-1,300	-10	0	-380

SX.31 Placed 18 year old applicants from Northern Ireland by sex: 15 days after A level results day

Placed 18 year old applicants: change relative to 2014 cycle totals

Men
Women



SX.32 Placed 18 year old applicants from Northern Ireland by sex: 15 days after A level results day

Applicant Status	Sex	2011	2012	2013	2014	2015
Placed	Men	3,800	3,620	3,920	3,780	3,600
	Women	4,770	4,720	4,850	4,780	4,830
	All	8,570	8,340	8,770	8,560	8,430

SX.33 Placed 18 year old applicants from Northern Ireland by sex: 15 days after A level results day

Placed 18 year old applicants: change relative to 2014 cycle totals

Applicant Status	Sex	2011	2012	2013	2014	2015
Placed	Men	1%	-4%	4%	0%	-5%
	Women	-0%	-1%	1%	0%	1%
	All	0%	-3%	2%	0%	-1%

SX.34 Placed 18 year old applicants from Northern Ireland by sex: 15 days after A level results day

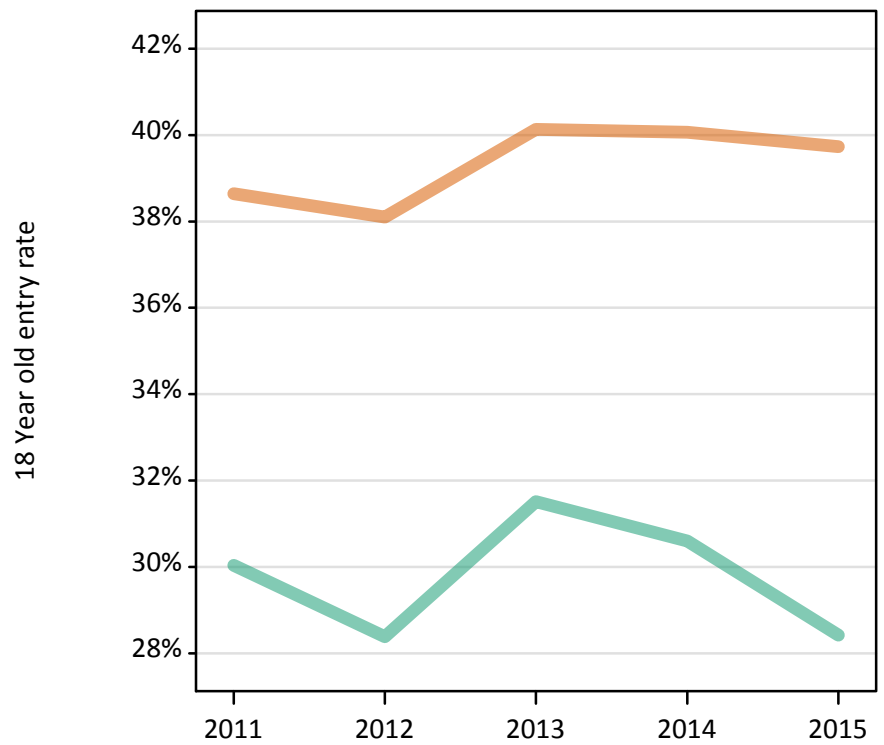
Placed 18 year old applicants: absolute change relative to 2014 cycle totals

Applicant Status	Sex	2011	2012	2013	2014	2015
Placed	Men	30	-160	140	0	-170
	Women	-10	-60	70	0	50
	All	20	-220	210	0	-120

SX.35 Placed 18 year old applicants from Northern Ireland by sex: 15 days after A level results day

Placed 18 year old applicants: entry rate

Men
Women



SX.36 Placed 18 year old applicants from Northern Ireland by sex: 15 days after A level results day

Placed 18 year old applicants: entry rate

Applicant Status	Sex	2011	2012	2013	2014	2015
Placed	Men	30.0%	28.4%	31.5%	30.6%	28.4%
	Women	38.6%	38.1%	40.1%	40.1%	39.7%
	All	34.3%	33.2%	35.8%	35.3%	34.0%

SX.37 Placed 18 year old applicants from Northern Ireland by sex: 15 days after A level results day

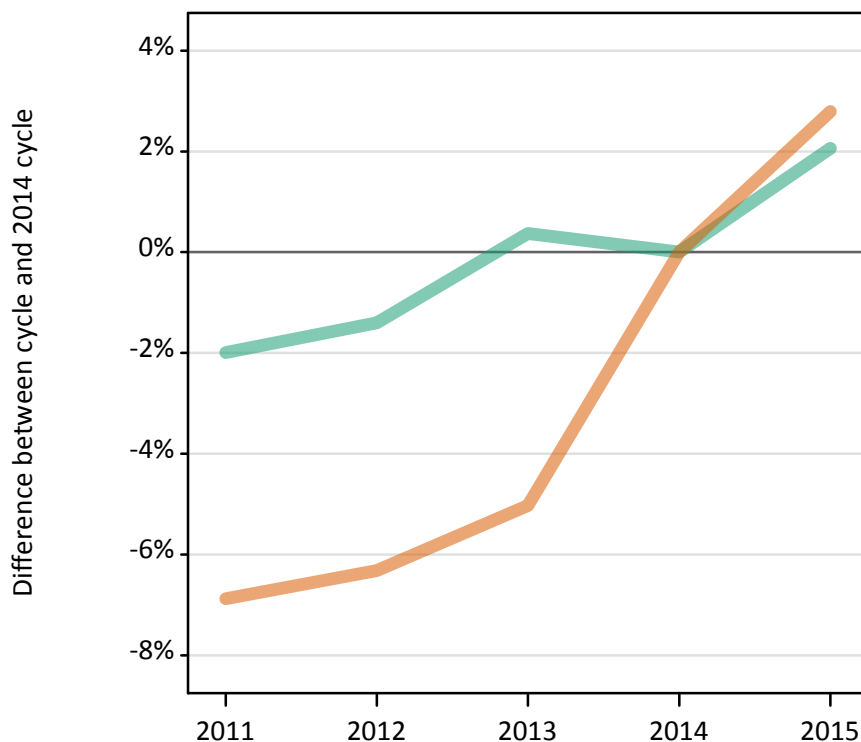
Placed 18 year old applicants: entry rate (indexed to 100 = Men)

Applicant Status	Sex	2011	2012	2013	2014	2015
Placed	Men	100	100	100	100	100
	Women	129	134	127	131	140

SX.38 Placed applicants from Scotland by sex: 15 days after A level results day

Placed applicants: change relative to 2014 cycle totals

Men
Women



SX.39 Placed applicants from Scotland by sex: 15 days after A level results day

Applicant Status	Sex	2011	2012	2013	2014	2015
Placed	Men	11,900	11,980	12,190	12,150	12,400
	Women	15,590	15,690	15,900	16,750	17,210
	All	27,500	27,660	28,090	28,890	29,610

SX.40 Placed applicants from Scotland by sex: 15 days after A level results day

Placed applicants: change relative to 2014 cycle totals

Applicant Status	Sex	2011	2012	2013	2014	2015
Placed	Men	-2%	-1%	0%	0%	2%
	Women	-7%	-6%	-5%	0%	3%
	All	-5%	-4%	-3%	0%	2%

SX.41 Placed applicants from Scotland by sex: 15 days after A level results day

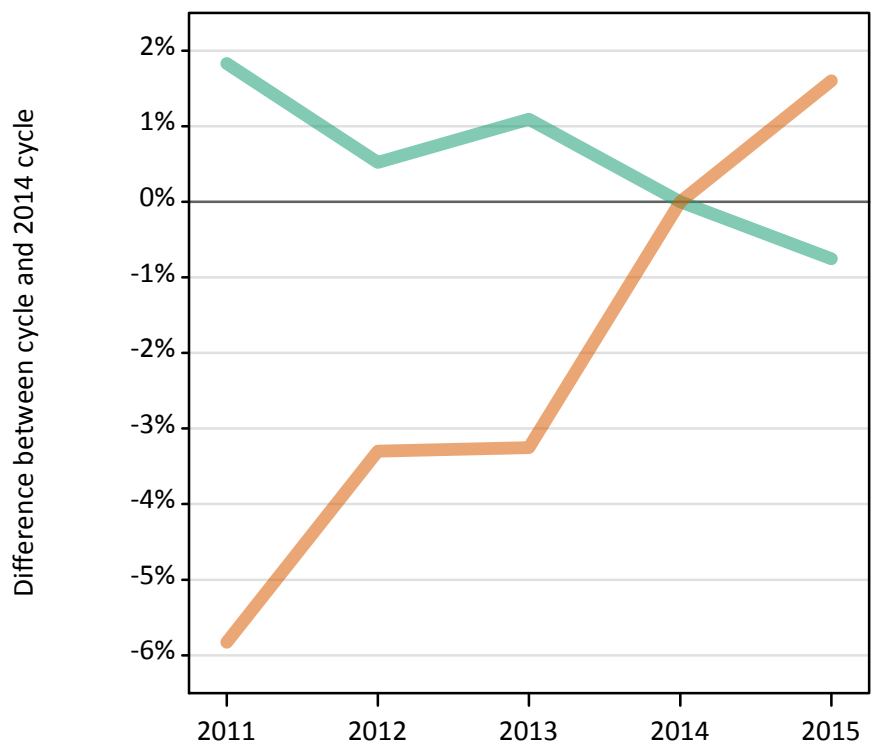
Placed applicants: absolute change relative to 2014 cycle totals

Applicant Status	Sex	2011	2012	2013	2014	2015
Placed	Men	-240	-170	50	0	250
	Women	-1,150	-1,060	-840	0	470
	All	-1,390	-1,230	-800	0	720

SX.42 Placed 18 year old applicants from Scotland by sex: 15 days after A level results day

Placed 18 year old applicants: change relative to 2014 cycle totals

Men
Women



SX.43 Placed 18 year old applicants from Scotland by sex: 15 days after A level results day

Applicant Status	Sex	2011	2012	2013	2014	2015
Placed	Men	6,070	5,990	6,020	5,960	5,910
	Women	7,530	7,740	7,740	8,000	8,130
	All	13,600	13,720	13,760	13,960	14,040

SX.44 Placed 18 year old applicants from Scotland by sex: 15 days after A level results day

Placed 18 year old applicants: change relative to 2014 cycle totals

Applicant Status	Sex	2011	2012	2013	2014	2015
Placed	Men	2%	1%	1%	0%	-1%
	Women	-6%	-3%	-3%	0%	2%
	All	-3%	-2%	-1%	0%	1%

SX.45 Placed 18 year old applicants from Scotland by sex: 15 days after A level results day

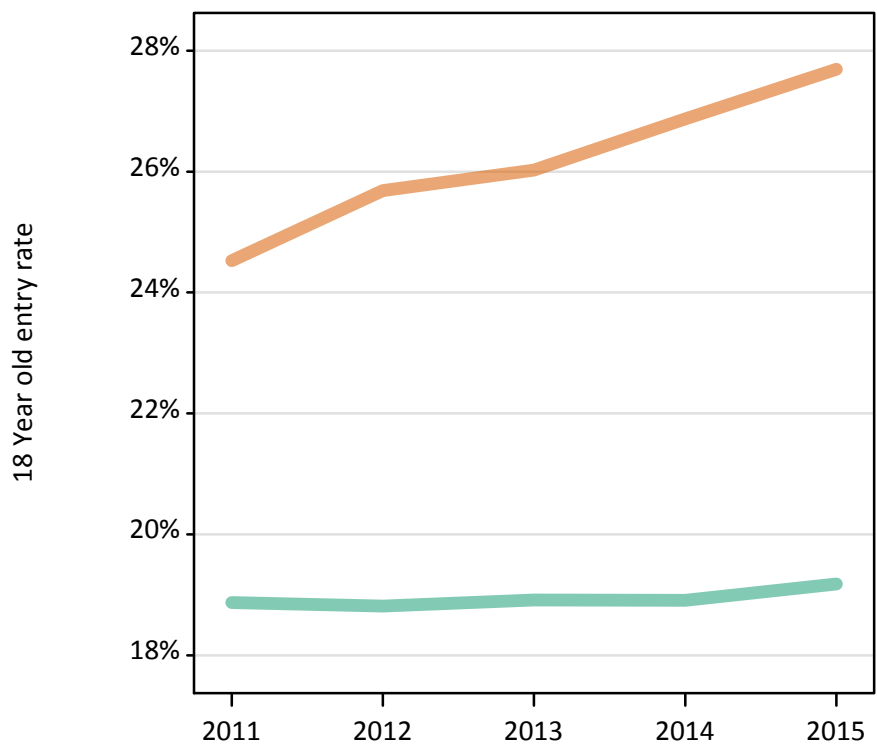
Placed 18 year old applicants: absolute change relative to 2014 cycle totals

Applicant Status	Sex	2011	2012	2013	2014	2015
Placed	Men	110	30	70	0	-50
	Women	-470	-260	-260	0	130
	All	-360	-230	-200	0	80

SX.46 Placed 18 year old applicants from Scotland by sex: 15 days after A level results day

Placed 18 year old applicants: entry rate

Men
Women



SX.47 Placed 18 year old applicants from Scotland by sex: 15 days after A level results day

Placed 18 year old applicants: entry rate

Applicant Status	Sex	2011	2012	2013	2014	2015
Placed	Men	18.9%	18.8%	18.9%	18.9%	19.2%
	Women	24.5%	25.7%	26.0%	26.9%	27.7%
	All	21.6%	22.2%	22.3%	22.8%	23.3%

SX.48 Placed 18 year old applicants from Scotland by sex: 15 days after A level results day

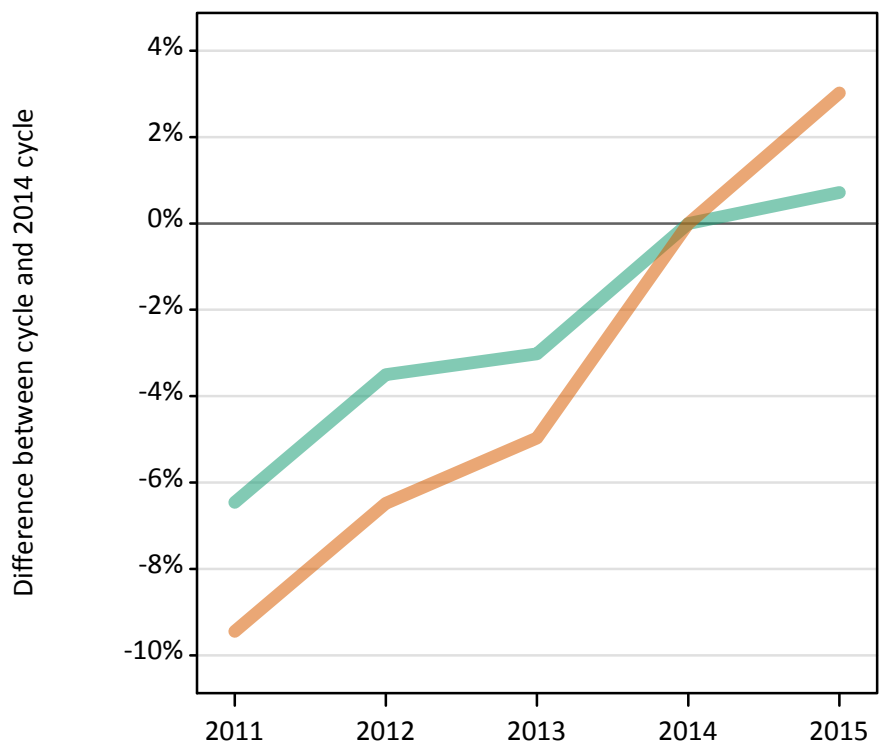
Placed 18 year old applicants: entry rate (indexed to 100 = Men)

Applicant Status	Sex	2011	2012	2013	2014	2015
Placed	Men	100	100	100	100	100
	Women	130	137	138	142	144

SX.49 Placed applicants from Wales by sex: 15 days after A level results day

Placed applicants: change relative to 2014 cycle totals

Men
Women



SX.50 Placed applicants from Wales by sex: 15 days after A level results day

Applicant Status	Sex	2011	2012	2013	2014	2015
Placed	Men	7,460	7,700	7,730	7,970	8,030
	Women	9,820	10,140	10,310	10,850	11,180
	All	17,280	17,840	18,040	18,820	19,210

SX.51 Placed applicants from Wales by sex: 15 days after A level results day

Placed applicants: change relative to 2014 cycle totals

Applicant Status	Sex	2011	2012	2013	2014	2015
Placed	Men	-6%	-3%	-3%	0%	1%
	Women	-9%	-6%	-5%	0%	3%
	All	-8%	-5%	-4%	0%	2%

SX.52 Placed applicants from Wales by sex: 15 days after A level results day

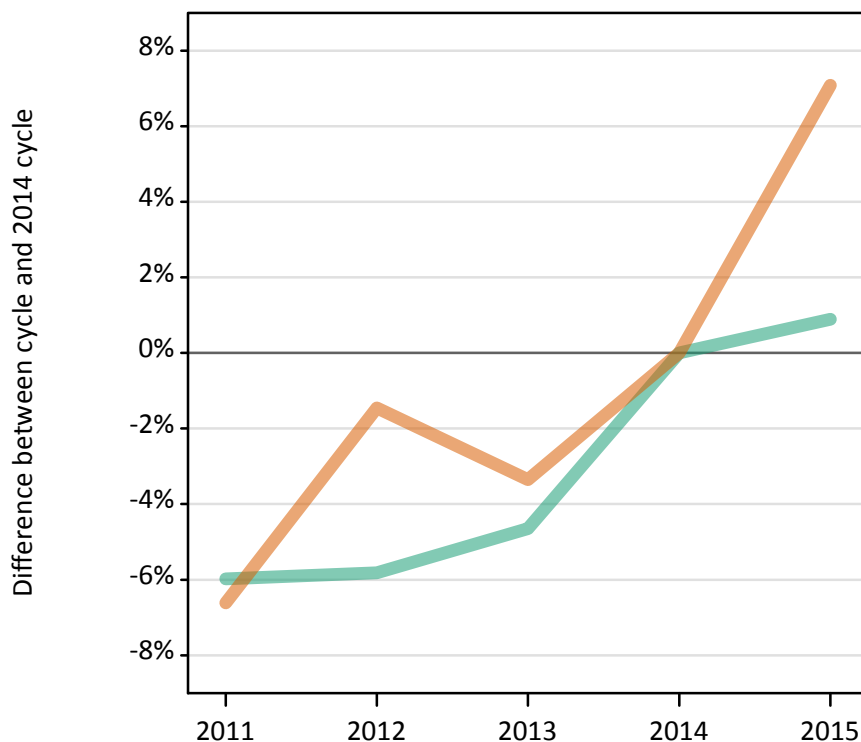
Placed applicants: absolute change relative to 2014 cycle totals

Applicant Status	Sex	2011	2012	2013	2014	2015
Placed	Men	-520	-280	-240	0	60
	Women	-1,030	-700	-540	0	330
	All	-1,540	-980	-780	0	390

SX.53 Placed 18 year old applicants from Wales by sex: 15 days after A level results day

Placed 18 year old applicants: change relative to 2014 cycle totals

Men
Women



SX.54 Placed 18 year old applicants from Wales by sex: 15 days after A level results day

Applicant Status	Sex	2011	2012	2013	2014	2015
Placed	Men	4,100	4,110	4,160	4,370	4,400
	Women	5,330	5,620	5,510	5,700	6,110
	All	9,430	9,730	9,680	10,070	10,510

SX.55 Placed 18 year old applicants from Wales by sex: 15 days after A level results day

Placed 18 year old applicants: change relative to 2014 cycle totals

Applicant Status	Sex	2011	2012	2013	2014	2015
Placed	Men	-6%	-6%	-5%	0%	1%
	Women	-7%	-1%	-3%	0%	7%
	All	-6%	-3%	-4%	0%	4%

SX.56 Placed 18 year old applicants from Wales by sex: 15 days after A level results day

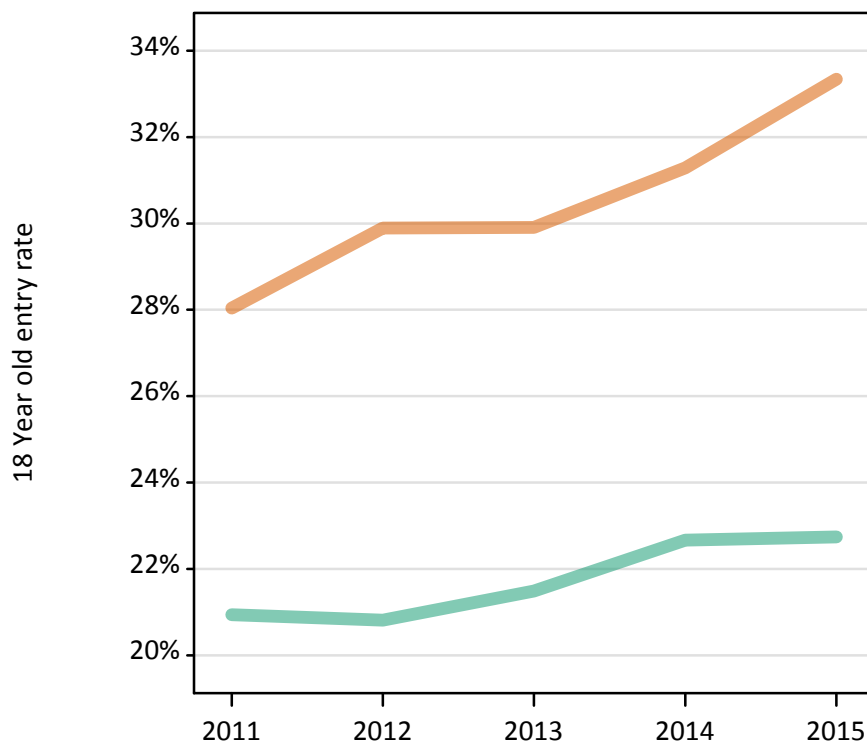
Placed 18 year old applicants: absolute change relative to 2014 cycle totals

Applicant Status	Sex	2011	2012	2013	2014	2015
Placed	Men	-260	-250	-200	0	40
	Women	-380	-80	-190	0	400
	All	-640	-340	-390	0	440

SX.57 Placed 18 year old applicants from Wales by sex: 15 days after A level results day

Placed 18 year old applicants: entry rate

Men
Women



SX.58 Placed 18 year old applicants from Wales by sex: 15 days after A level results day

Placed 18 year old applicants: entry rate

Applicant Status	Sex	2011	2012	2013	2014	2015
Placed	Men	20.9%	20.8%	21.5%	22.7%	22.7%
	Women	28.0%	29.9%	29.9%	31.3%	33.3%
	All	24.4%	25.2%	25.6%	26.9%	27.9%

SX.59 Placed 18 year old applicants from Wales by sex: 15 days after A level results day

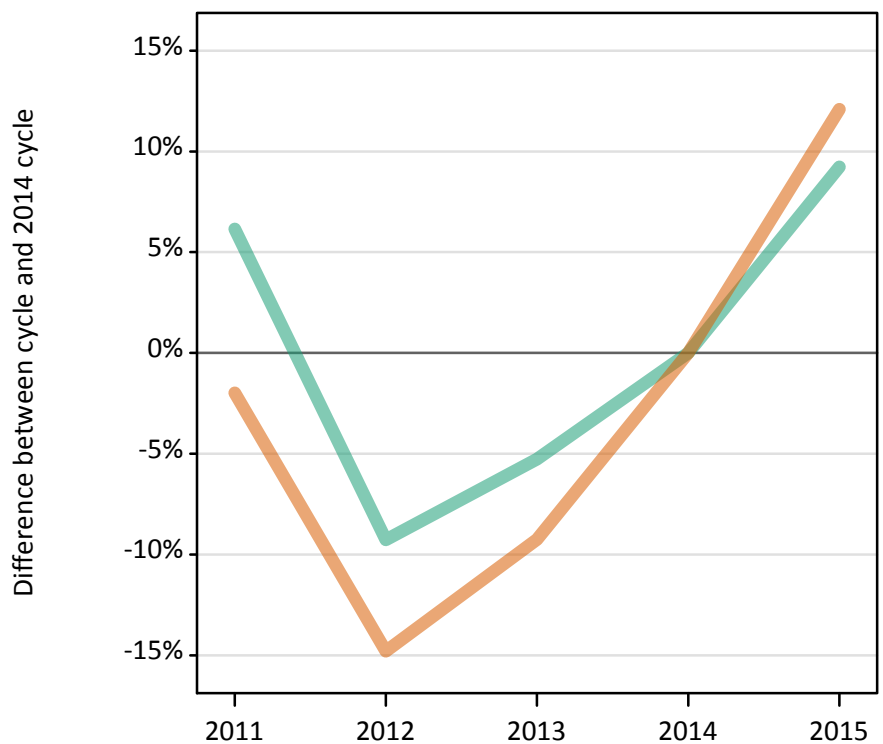
Placed 18 year old applicants: entry rate (indexed to 100 = Men)

Applicant Status	Sex	2011	2012	2013	2014	2015
Placed	Men	100	100	100	100	100
	Women	134	144	139	138	147

SX.60 Placed applicants from the EU (excluding the UK) by sex: 15 days after A level results day

Placed applicants: change relative to 2014 cycle totals

Men
Women



SX.61 Placed applicants from the EU (excluding the UK) by sex: 15 days after A level results day

Applicant Status	Sex	2011	2012	2013	2014	2015
Placed	Men	11,360	9,710	10,140	10,700	11,690
	Women	13,930	12,100	12,890	14,210	15,920
	All	25,290	21,820	23,030	24,910	27,620

SX.62 Placed applicants from the EU (excluding the UK) by sex: 15 days after A level results day

Placed applicants: change relative to 2014 cycle totals

Applicant Status	Sex	2011	2012	2013	2014	2015
Placed	Men	6%	-9%	-5%	0%	9%
	Women	-2%	-15%	-9%	0%	12%
	All	2%	-12%	-8%	0%	11%

SX.63 Placed applicants from the EU (excluding the UK) by sex: 15 days after A level results day

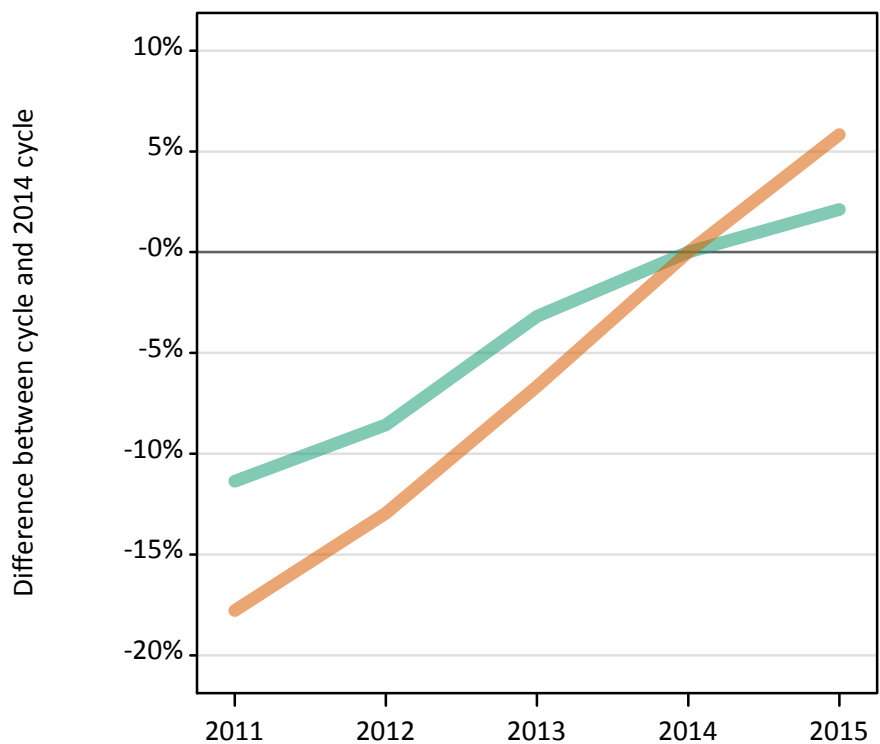
Placed applicants: absolute change relative to 2014 cycle totals

Applicant Status	Sex	2011	2012	2013	2014	2015
Placed	Men	660	-990	-560	0	990
	Women	-280	-2,100	-1,320	0	1,720
	All	380	-3,100	-1,880	0	2,710

SX.64 Placed applicants from overseas (not EU) by sex: 15 days after A level results day

Placed applicants: change relative to 2014 cycle totals

Men
Women



SX.65 Placed applicants from overseas (not EU) by sex: 15 days after A level results day

Applicant Status	Sex	2011	2012	2013	2014	2015
Placed	Men	13,840	14,270	15,110	15,610	15,940
	Women	14,580	15,430	16,550	17,730	18,770
	All	28,410	29,700	31,660	33,340	34,710

SX.66 Placed applicants from overseas (not EU) by sex: 15 days after A level results day

Placed applicants: change relative to 2014 cycle totals

Applicant Status	Sex	2011	2012	2013	2014	2015
Placed	Men	-11%	-9%	-3%	0%	2%
	Women	-18%	-13%	-7%	0%	6%
	All	-15%	-11%	-5%	0%	4%

SX.67 Placed applicants from overseas (not EU) by sex: 15 days after A level results day

Placed applicants: absolute change relative to 2014 cycle totals

Applicant Status	Sex	2011	2012	2013	2014	2015
Placed	Men	-1,770	-1,340	-500	0	330
	Women	-3,150	-2,300	-1,180	0	1,030
	All	-4,930	-3,640	-1,680	0	1,370