

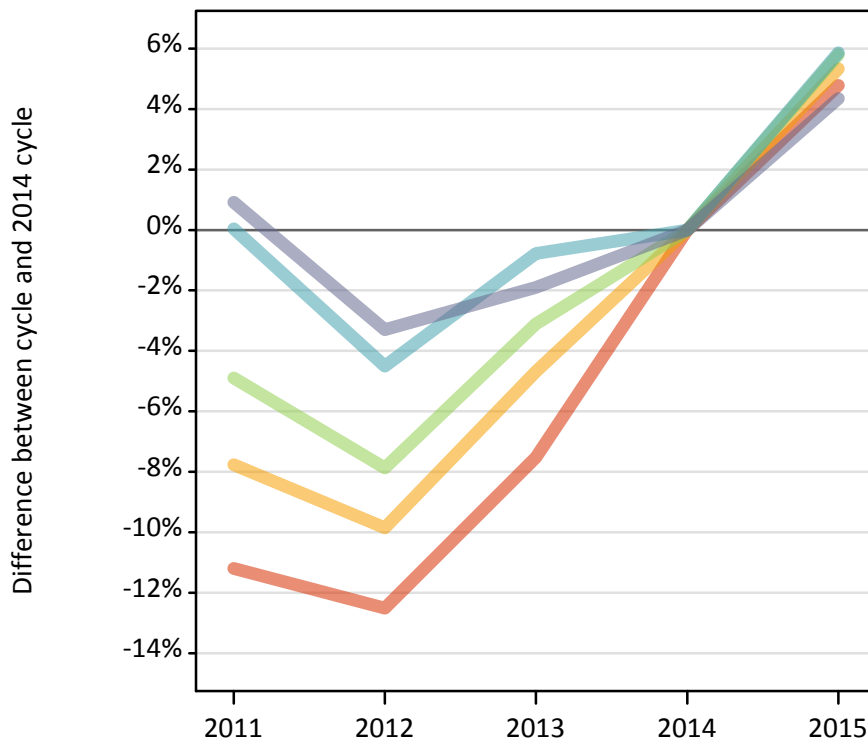
Daily Clearing Analysis: POLAR3

Analysis at 00:05 on Friday 28 August 2015 (15 days after A level results day - No Scot.X1)

PX.1 Placed 18 year old applicants from England by POLAR3 quintile: 15 days after A level results day

Placed 18 year old applicants: change relative to 2014 cycle totals

- Quintile 1
- Quintile 2
- Quintile 3
- Quintile 4
- Quintile 5



PX.2 Placed 18 year old applicants from England by POLAR3 quintile: 15 days after A level results day

Applicant Status	POLAR3	2011	2012	2013	2014	2015
Placed	Quintile 1	18,730	18,450	19,500	21,090	22,100
	Quintile 2	27,320	26,700	28,230	29,620	31,200
	Quintile 3	35,690	34,580	36,360	37,530	39,700
	Quintile 4	43,770	41,780	43,410	43,750	46,310
	Quintile 5	58,810	56,350	57,170	58,270	60,810

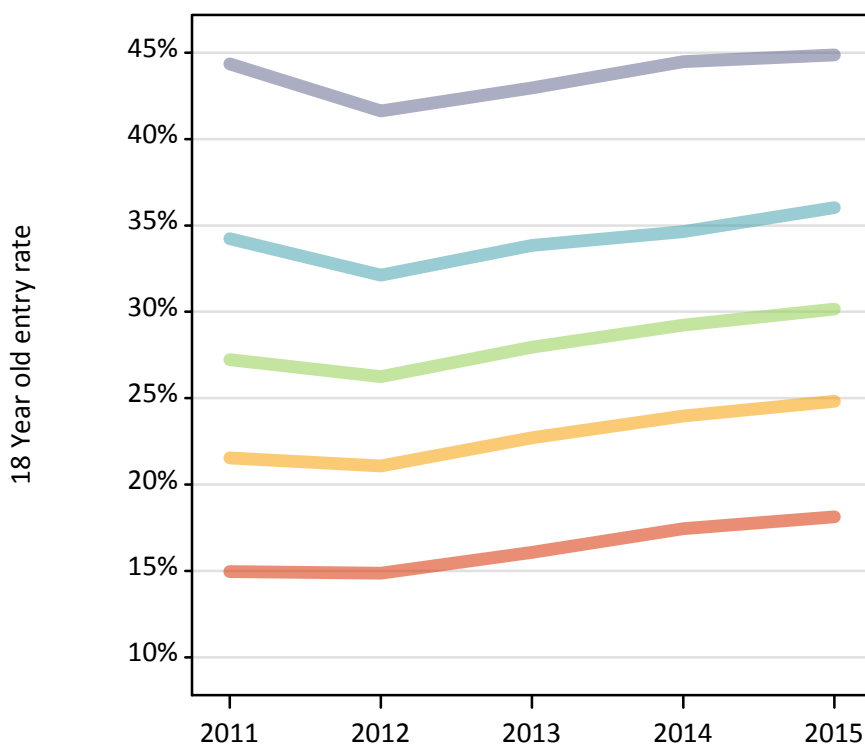
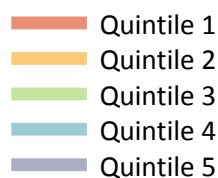
PX.3 Placed 18 year old applicants from England by POLAR3 quintile: 15 days after A level results day

Placed 18 year old applicants: change relative to 2014 cycle totals

Applicant Status	POLAR3	2011	2012	2013	2014	2015
Placed	Quintile 1	-11%	-13%	-8%	0%	5%
	Quintile 2	-8%	-10%	-5%	0%	5%
	Quintile 3	-5%	-8%	-3%	0%	6%
	Quintile 4	0%	-5%	-1%	0%	6%
	Quintile 5	1%	-3%	-2%	0%	4%

PX.4 Placed 18 year old applicants from England by POLAR3 quintile: 15 days after A level results day

Placed 18 year old applicants: entry rate



PX.5 Placed 18 year old applicants from England by POLAR3 quintile: 15 days after A level results day

Placed 18 year old applicants: entry rate

Applicant Status	POLAR3	2011	2012	2013	2014	2015
Placed	Quintile 1	15.0%	14.9%	16.1%	17.4%	18.1%
	Quintile 2	21.5%	21.1%	22.7%	24.0%	24.8%
	Quintile 3	27.2%	26.3%	28.0%	29.2%	30.2%
	Quintile 4	34.2%	32.1%	33.8%	34.6%	36.0%
	Quintile 5	44.3%	41.6%	43.0%	44.5%	44.9%

PX.6 Placed 18 year old applicants from England by POLAR3 quintile: 15 days after A level results day

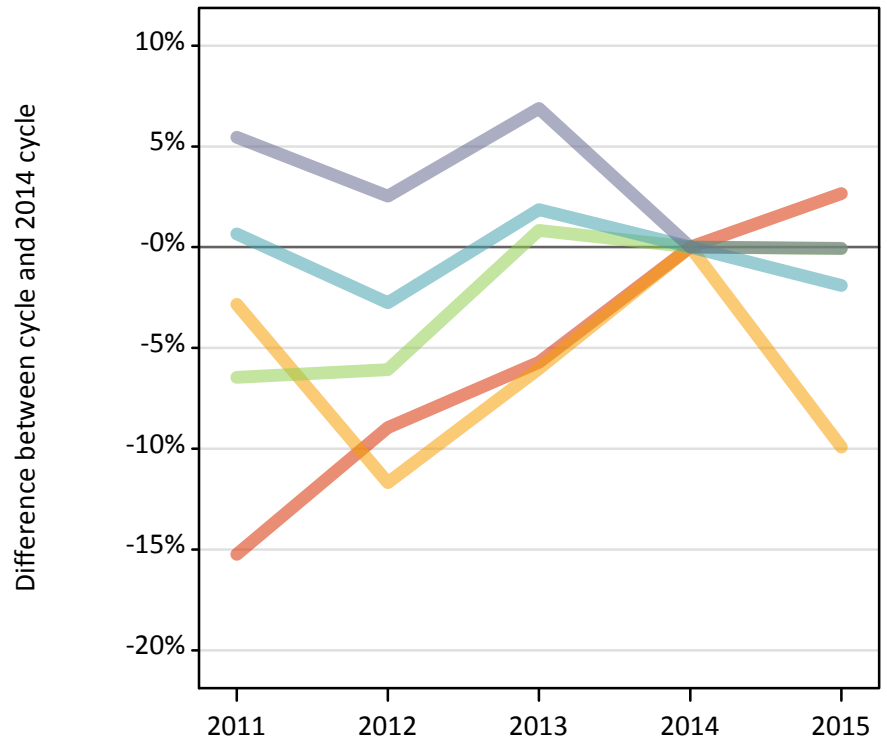
Placed 18 year old applicants: entry rate (indexed to 100 = Quintile 1)

Applicant Status	POLAR3	2011	2012	2013	2014	2015
Placed	Quintile 1	100	100	100	100	100
	Quintile 2	144	142	141	137	137
	Quintile 3	182	176	174	167	166
	Quintile 4	229	216	210	199	199
	Quintile 5	296	280	267	255	248

PX.7 Placed 18 year old applicants from Northern Ireland by POLAR3 quintile: 15 days after A level results day

Placed 18 year old applicants: change relative to 2014 cycle totals

- Quintile 1
- Quintile 2
- Quintile 3
- Quintile 4
- Quintile 5



PX.8 Placed 18 year old applicants from Northern Ireland by POLAR3 quintile: 15 days after A level results day

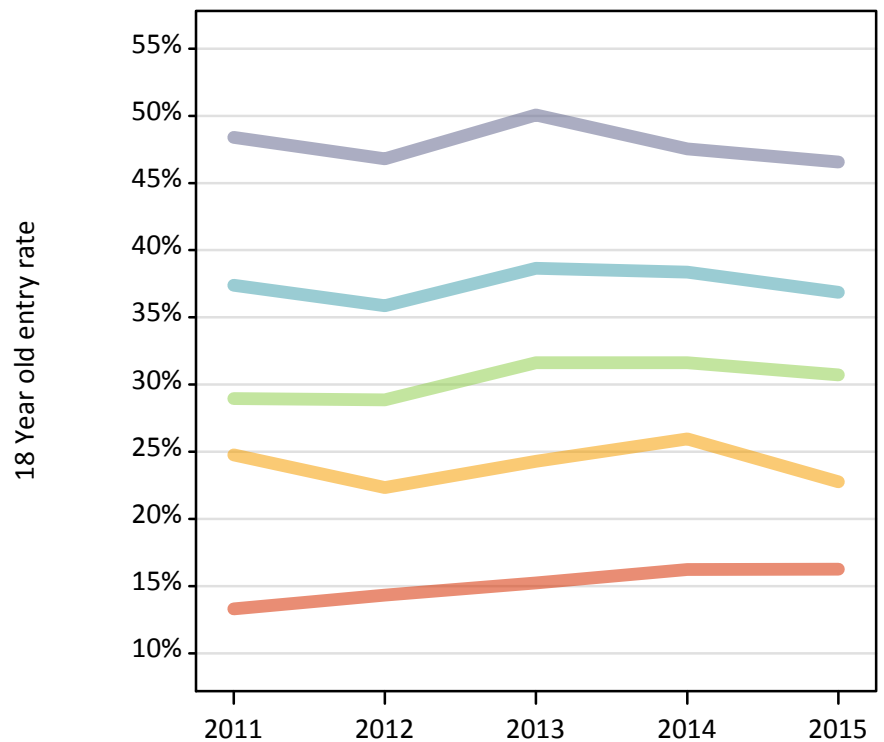
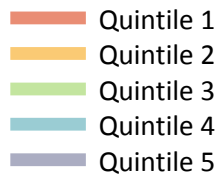
Applicant Status	POLAR3	2011	2012	2013	2014	2015
Placed	Quintile 1	450	480	500	530	540
	Quintile 2	820	750	800	850	760
	Quintile 3	1,230	1,240	1,330	1,320	1,320
	Quintile 4	2,590	2,500	2,620	2,570	2,520
	Quintile 5	3,460	3,360	3,510	3,280	3,280

PX.9 Placed 18 year old applicants from Northern Ireland by POLAR3 quintile: 15 days after A level results day

Placed 18 year old applicants: change relative to 2014 cycle totals

Applicant Status	POLAR3	2011	2012	2013	2014	2015
Placed	Quintile 1	-15%	-9%	-6%	0%	3%
	Quintile 2	-3%	-12%	-6%	0%	-10%
	Quintile 3	-6%	-6%	1%	0%	-0%
	Quintile 4	1%	-3%	2%	0%	-2%
	Quintile 5	5%	3%	7%	0%	-0%

PX.10 Placed 18 year old applicants from Northern Ireland by POLAR3 quintile: 15 days after A level results day
 Placed 18 year old applicants: entry rate



PX.11 Placed 18 year old applicants from Northern Ireland by POLAR3 quintile: 15 days after A level results day
 Placed 18 year old applicants: entry rate

Applicant Status	POLAR3	2011	2012	2013	2014	2015
Placed	Quintile 1	13.3%	14.3%	15.2%	16.2%	16.3%
	Quintile 2	24.8%	22.3%	24.3%	26.0%	22.8%
	Quintile 3	29.0%	28.9%	31.6%	31.6%	30.7%
	Quintile 4	37.4%	35.9%	38.7%	38.4%	36.9%
	Quintile 5	48.4%	46.8%	50.1%	47.5%	46.6%

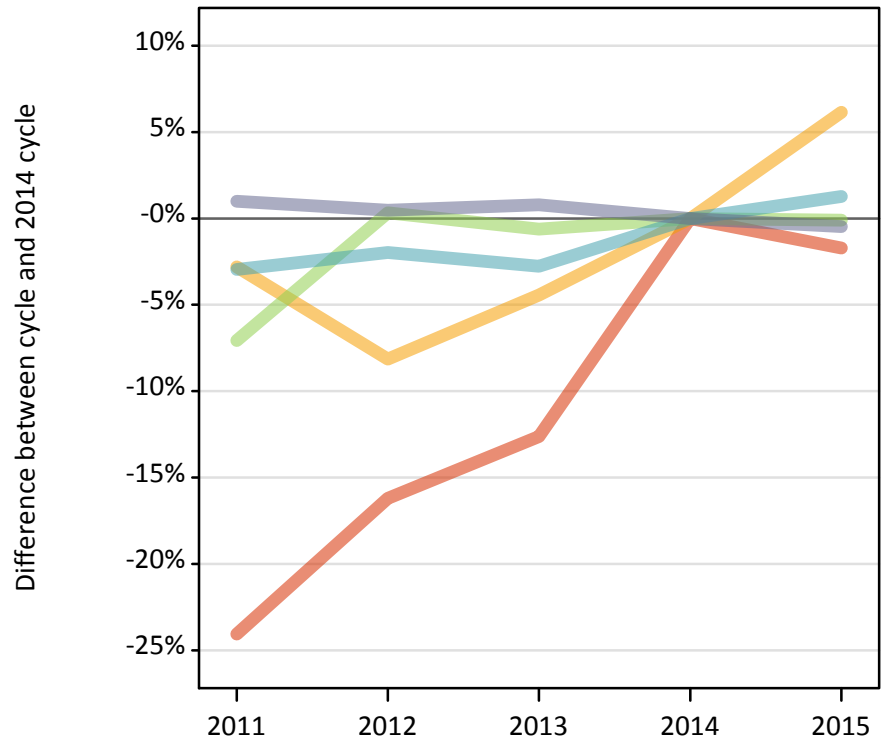
PX.12 Placed 18 year old applicants from Northern Ireland by POLAR3 quintile: 15 days after A level results day
 Placed 18 year old applicants: entry rate (indexed to 100 = Quintile 1)

Applicant Status	POLAR3	2011	2012	2013	2014	2015
Placed	Quintile 1	100	100	100	100	100
	Quintile 2	186	156	160	160	140
	Quintile 3	218	202	208	195	189
	Quintile 4	281	251	254	236	227
	Quintile 5	364	327	329	293	286

PX.13 Placed 18 year old applicants from Scotland by POLAR3 quintile: 15 days after A level results day

Placed 18 year old applicants: change relative to 2014 cycle totals

- Quintile 1
- Quintile 2
- Quintile 3
- Quintile 4
- Quintile 5



PX.14 Placed 18 year old applicants from Scotland by POLAR3 quintile: 15 days after A level results day

Applicant Status	POLAR3	2011	2012	2013	2014	2015
Placed	Quintile 1	450	490	510	590	580
	Quintile 2	1,310	1,240	1,290	1,350	1,430
	Quintile 3	1,970	2,130	2,110	2,120	2,120
	Quintile 4	3,190	3,220	3,200	3,290	3,330
	Quintile 5	6,640	6,610	6,630	6,580	6,550

PX.15 Placed 18 year old applicants from Scotland by POLAR3 quintile: 15 days after A level results day

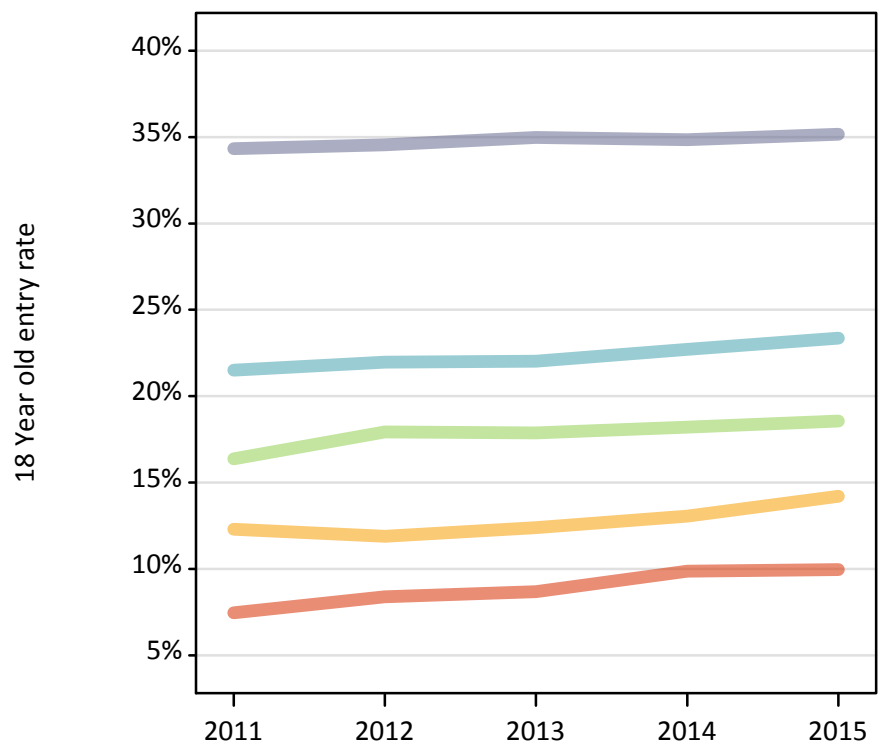
Placed 18 year old applicants: change relative to 2014 cycle totals

Applicant Status	POLAR3	2011	2012	2013	2014	2015
Placed	Quintile 1	-24%	-16%	-13%	0%	-2%
	Quintile 2	-3%	-8%	-4%	0%	6%
	Quintile 3	-7%	0%	-1%	0%	-0%
	Quintile 4	-3%	-2%	-3%	0%	1%
	Quintile 5	1%	0%	1%	0%	-0%

PX.16 Placed 18 year old applicants from Scotland by POLAR3 quintile: 15 days after A level results day

Placed 18 year old applicants: entry rate

- Quintile 1
- Quintile 2
- Quintile 3
- Quintile 4
- Quintile 5



PX.17 Placed 18 year old applicants from Scotland by POLAR3 quintile: 15 days after A level results day

Placed 18 year old applicants: entry rate

Applicant Status	POLAR3	2011	2012	2013	2014	2015
Placed	Quintile 1	7.5%	8.4%	8.7%	9.9%	10.0%
	Quintile 2	12.3%	11.9%	12.4%	13.1%	14.2%
	Quintile 3	16.4%	17.9%	17.9%	18.2%	18.6%
	Quintile 4	21.5%	22.0%	22.0%	22.7%	23.4%
	Quintile 5	34.3%	34.6%	35.0%	34.8%	35.2%

PX.18 Placed 18 year old applicants from Scotland by POLAR3 quintile: 15 days after A level results day

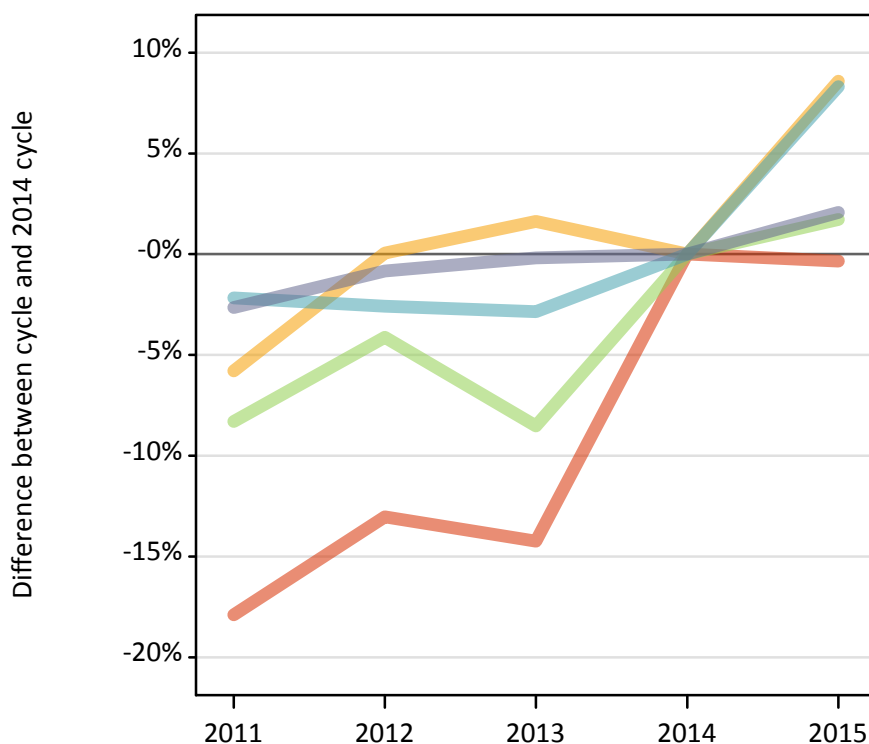
Placed 18 year old applicants: entry rate (indexed to 100 = Quintile 1)

Applicant Status	POLAR3	2011	2012	2013	2014	2015
Placed	Quintile 1	100	100	100	100	100
	Quintile 2	165	142	143	132	143
	Quintile 3	220	214	206	184	187
	Quintile 4	289	262	254	230	235
	Quintile 5	460	412	403	353	353

PX.19 Placed 18 year old applicants from Wales by POLAR3 quintile: 15 days after A level results day

Placed 18 year old applicants: change relative to 2014 cycle totals

- Quintile 1
- Quintile 2
- Quintile 3
- Quintile 4
- Quintile 5



PX.20 Placed 18 year old applicants from Wales by POLAR3 quintile: 15 days after A level results day

Applicant Status	POLAR3	2011	2012	2013	2014	2015
Placed	Quintile 1	1,220	1,290	1,270	1,480	1,480
	Quintile 2	1,850	1,970	2,000	1,970	2,140
	Quintile 3	1,600	1,680	1,600	1,750	1,780
	Quintile 4	2,170	2,160	2,150	2,210	2,400
	Quintile 5	2,580	2,630	2,640	2,650	2,700

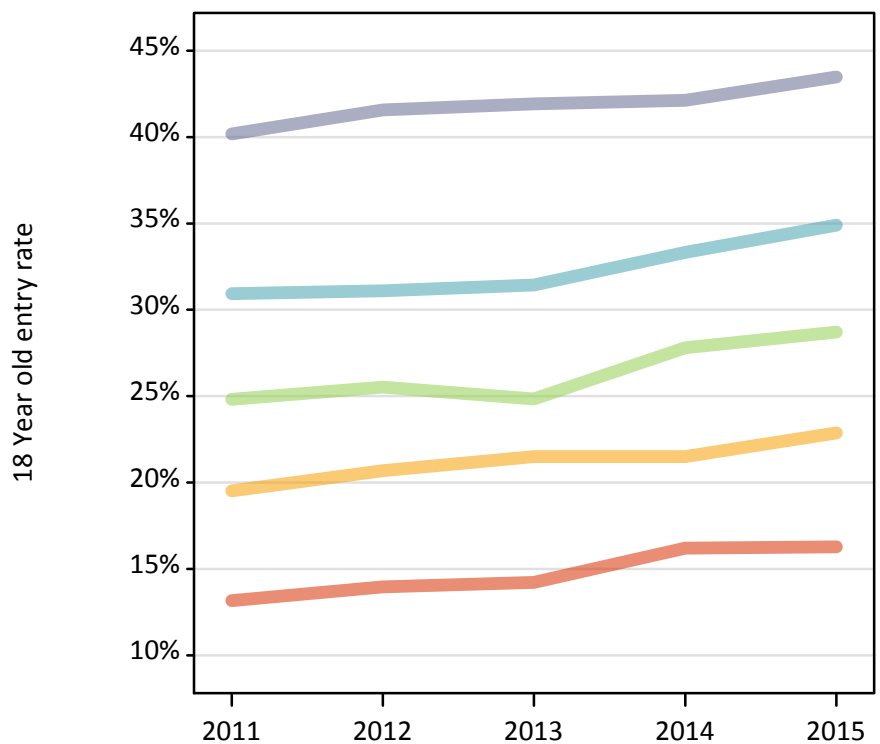
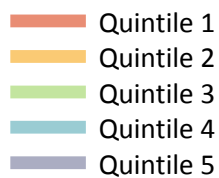
PX.21 Placed 18 year old applicants from Wales by POLAR3 quintile: 15 days after A level results day

Placed 18 year old applicants: change relative to 2014 cycle totals

Applicant Status	POLAR3	2011	2012	2013	2014	2015
Placed	Quintile 1	-18%	-13%	-14%	0%	-0%
	Quintile 2	-6%	0%	2%	0%	9%
	Quintile 3	-8%	-4%	-9%	0%	2%
	Quintile 4	-2%	-3%	-3%	0%	8%
	Quintile 5	-3%	-1%	-0%	0%	2%

PX.22 Placed 18 year old applicants from Wales by POLAR3 quintile: 15 days after A level results day

Placed 18 year old applicants: entry rate



PX.23 Placed 18 year old applicants from Wales by POLAR3 quintile: 15 days after A level results day

Placed 18 year old applicants: entry rate

Applicant Status	POLAR3	2011	2012	2013	2014	2015
Placed	Quintile 1	13.2%	14.0%	14.2%	16.2%	16.3%
	Quintile 2	19.5%	20.7%	21.5%	21.5%	22.9%
	Quintile 3	24.8%	25.5%	24.8%	27.8%	28.7%
	Quintile 4	30.9%	31.1%	31.4%	33.3%	34.9%
	Quintile 5	40.2%	41.6%	41.9%	42.1%	43.5%

PX.24 Placed 18 year old applicants from Wales by POLAR3 quintile: 15 days after A level results day

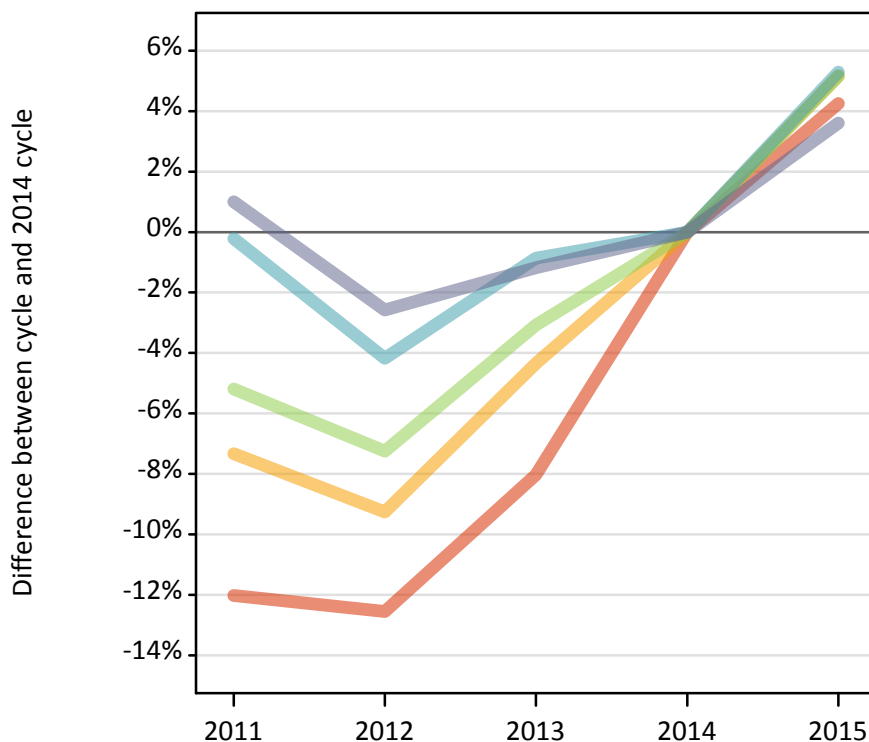
Placed 18 year old applicants: entry rate (indexed to 100 = Quintile 1)

Applicant Status	POLAR3	2011	2012	2013	2014	2015
Placed	Quintile 1	100	100	100	100	100
	Quintile 2	148	148	151	133	140
	Quintile 3	188	183	175	172	176
	Quintile 4	235	223	221	206	214
	Quintile 5	305	298	295	260	267

PX.25 Placed 18 year old applicants from the UK by POLAR3 quintile: 15 days after A level results day

Placed 18 year old applicants: change relative to 2014 cycle totals

- Quintile 1
- Quintile 2
- Quintile 3
- Quintile 4
- Quintile 5



PX.26 Placed 18 year old applicants from the UK by POLAR3 quintile: 15 days after A level results day

Applicant Status	POLAR3	2011	2012	2013	2014	2015
Placed	Quintile 1	20,830	20,710	21,780	23,680	24,690
	Quintile 2	31,310	30,660	32,320	33,780	35,530
	Quintile 3	40,500	39,620	41,400	42,710	44,920
	Quintile 4	51,710	49,660	51,380	51,820	54,560
	Quintile 5	71,490	68,950	69,950	70,780	73,330

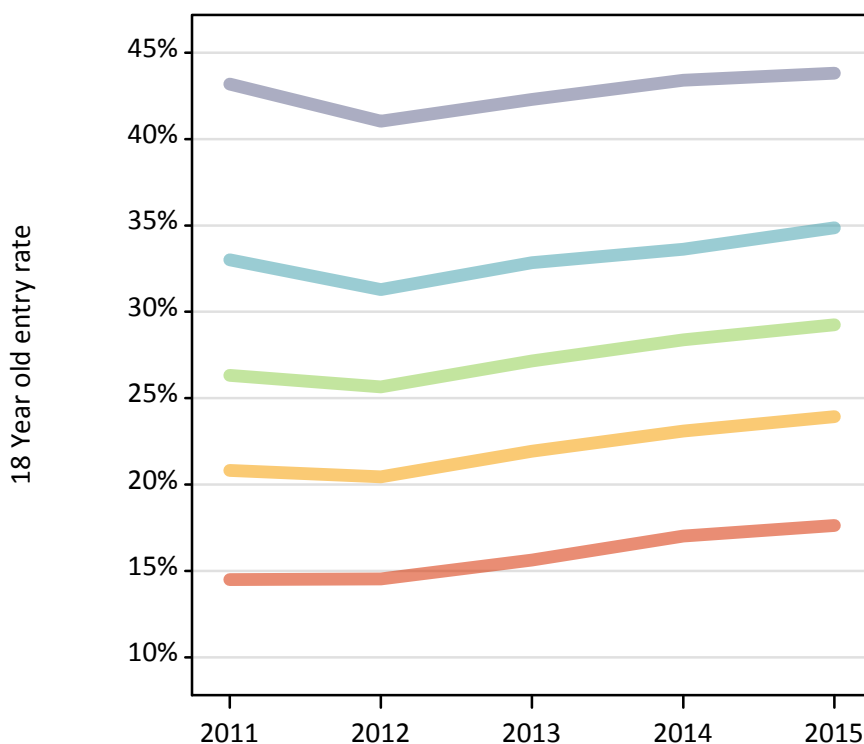
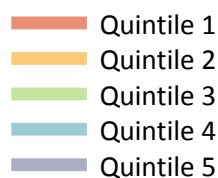
PX.27 Placed 18 year old applicants from the UK by POLAR3 quintile: 15 days after A level results day

Placed 18 year old applicants: change relative to 2014 cycle totals

Applicant Status	POLAR3	2011	2012	2013	2014	2015
Placed	Quintile 1	-12%	-13%	-8%	0%	4%
	Quintile 2	-7%	-9%	-4%	0%	5%
	Quintile 3	-5%	-7%	-3%	0%	5%
	Quintile 4	-0%	-4%	-1%	0%	5%
	Quintile 5	1%	-3%	-1%	0%	4%

PX.28 Placed 18 year old applicants from the UK by POLAR3 quintile: 15 days after A level results day

Placed 18 year old applicants: entry rate



PX.29 Placed 18 year old applicants from the UK by POLAR3 quintile: 15 days after A level results day

Placed 18 year old applicants: entry rate

Applicant Status	POLAR3	2011	2012	2013	2014	2015
Placed	Quintile 1	14.5%	14.5%	15.6%	17.0%	17.6%
	Quintile 2	20.8%	20.4%	21.9%	23.1%	23.9%
	Quintile 3	26.3%	25.7%	27.1%	28.4%	29.2%
	Quintile 4	33.0%	31.3%	32.9%	33.6%	34.9%
	Quintile 5	43.2%	41.0%	42.3%	43.4%	43.8%

PX.30 Placed 18 year old applicants from the UK by POLAR3 quintile: 15 days after A level results day

Placed 18 year old applicants: entry rate (indexed to 100 = Quintile 1)

Applicant Status	POLAR3	2011	2012	2013	2014	2015
Placed	Quintile 1	100	100	100	100	100
	Quintile 2	144	141	140	136	136
	Quintile 3	182	177	174	167	166
	Quintile 4	228	215	210	198	198
	Quintile 5	298	282	271	255	249