

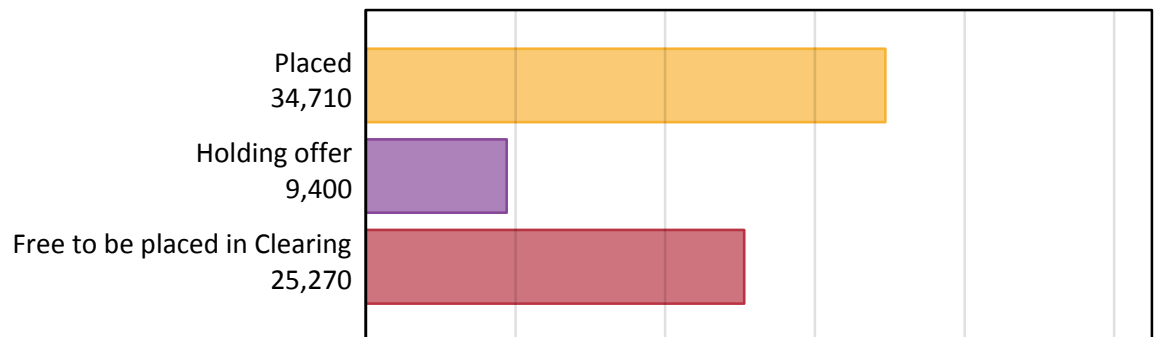
Daily Clearing Analysis: Overview

Analysis at 00:05 on Friday 28 August 2015 (15 days after A level results day - No Scot.X1)

AX.1 Applicants by type and status from outside the EU, 2015 cycle

Applicant type	Status	2015
Main scheme	Placed (Clearing)	2,710
	Placed (Adjustment)	70
	Placed (Firm)	26,110
	Placed (Insurance)	3,440
	Placed (Other)	1,890
	Holding offer	9,400
	Free to be placed in Clearing	25,270
Direct to Clearing	Placed (Direct to Clearing)	490
	Other (Direct to Clearing)	810
All applicants	Placed	34,710

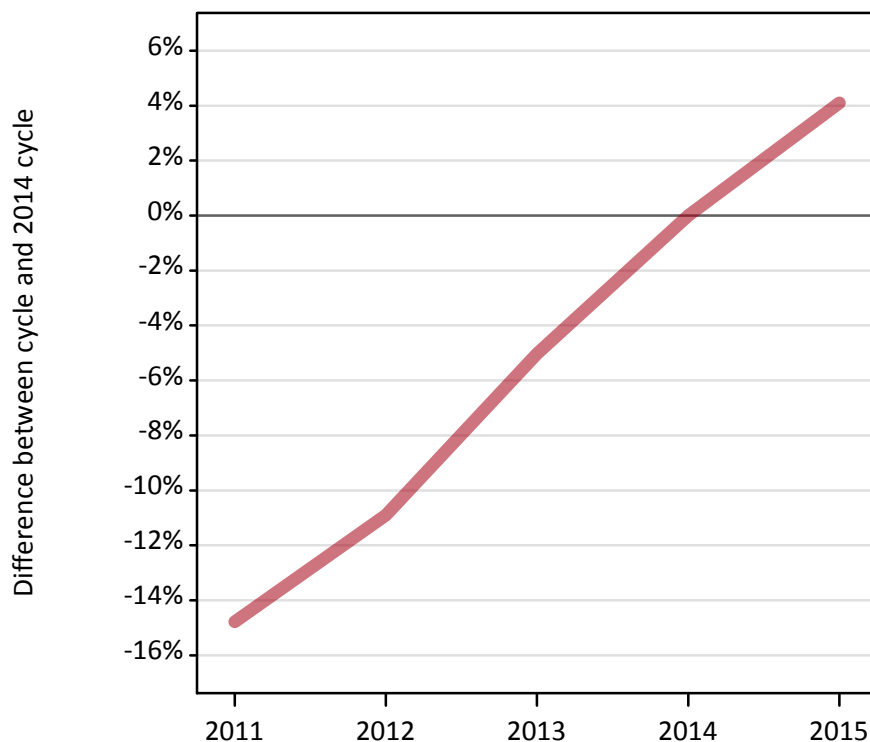
AX.2 Summary of applicants who are placed, holding offers or free to be placed in Clearing (outside the EU)



AX.3 All placed applicants from outside the EU: 15 days after A level results day

All placed applicants: difference between cycle and 2014 cycle

Placed



AX.4 All placed applicants from outside the EU: 15 days after A level results day

All placed applicants: applicants at 15 days after A level results day

Applicant type	Status	2011	2012	2013	2014	2015
All applicants	Placed	28,410	29,700	31,660	33,340	34,710

AX.5 All placed applicants from outside the EU: 15 days after A level results day

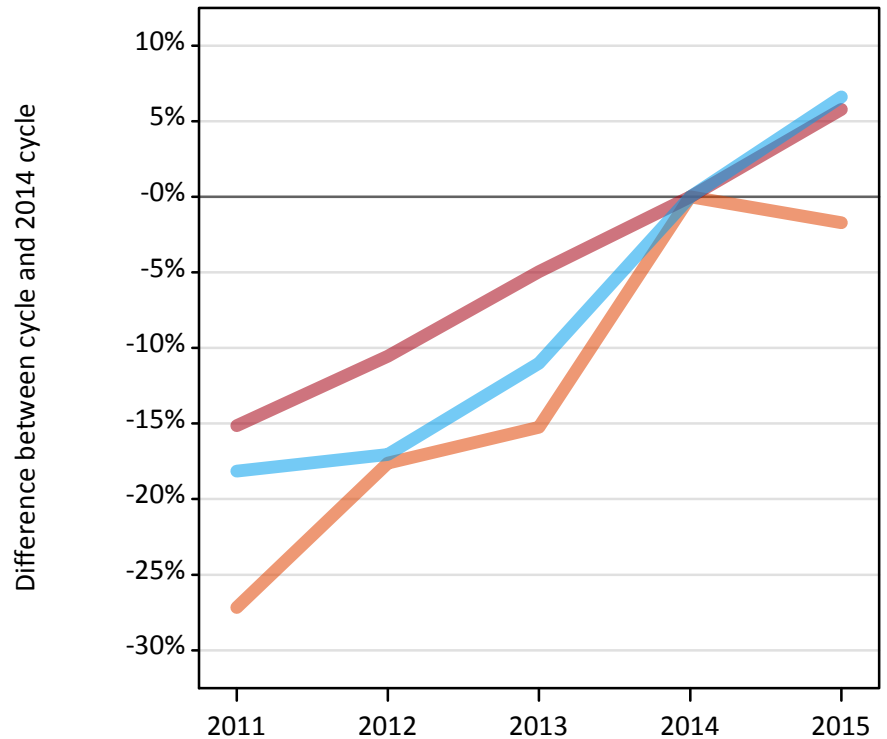
All placed applicants: difference between cycle and 2014 cycle

Applicant type	Status	2011	2012	2013	2014	2015
All applicants	Placed	-15%	-11%	-5%	0%	4%

AX.6 Placed main scheme applicants from outside the EU: 15 days after A level results day

Selected placed routes: difference between cycle and 2014 cycle

- Placed (Clearing)
- Placed (Firm)
- Placed (Insurance)



AX.7 Placed main scheme applicants from outside the EU: 15 days after A level results day

All Main scheme placed routes (excluding Adjustment): applicants at 15 days after A level results day

Applicant type	Status	2011	2012	2013	2014	2015
Main scheme	Placed (Clearing)	2,010	2,270	2,340	2,760	2,710
	Placed (Firm)	20,940	22,080	23,460	24,680	26,110
	Placed (Insurance)	2,640	2,670	2,870	3,220	3,440
	Placed (Other)	2,470	2,210	2,500	2,200	1,890

AX.8 Placed main scheme applicants from outside the EU: 15 days after A level results day

Selected placed routes: difference between cycle and 2014 cycle

Applicant type	Status	2011	2012	2013	2014	2015
Main scheme	Placed (Clearing)	-27%	-18%	-15%	0%	-2%
	Placed (Firm)	-15%	-11%	-5%	0%	6%
	Placed (Insurance)	-18%	-17%	-11%	0%	7%

AX.9 Main scheme applicants placed through adjustment: 15 days after A level results day

Placed through adjustment: difference between cycle and 2014 cycle

Placed (Adjustment)



AX.10 Main scheme applicants placed through adjustment: 15 days after A level results day

Placed through adjustment: applicants at 15 days after A level results day

Applicant type	Status	2011	2012	2013	2014	2015
Main scheme	Placed (Adjustment)	40	70	60	90	70

AX.11 Main scheme applicants placed through adjustment: 15 days after A level results day

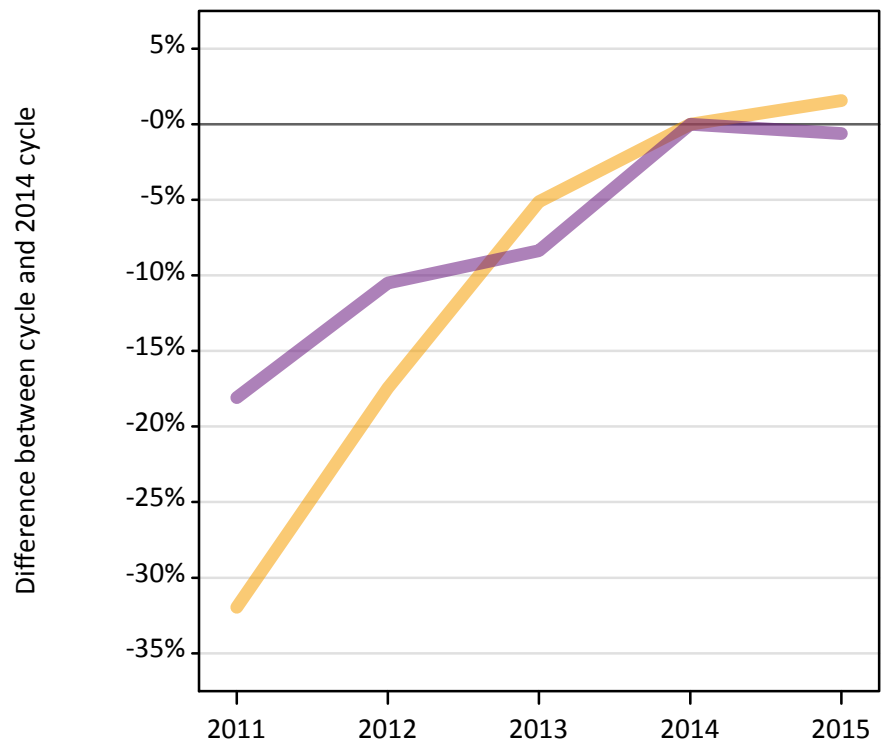
Placed through adjustment: difference between cycle and 2014 cycle

Applicant type	Status	2011	2012	2013	2014	2015
Main scheme	Placed (Adjustment)	-53%	-21%	-30%	0%	-16%

AX.12 Main scheme applicants not currently placed from outside the EU: 15 days after A level results day

Applicants in unplaced states: difference between cycle and 2014 cycle

— Holding offer
— Free to be placed in Clearing



AX.13 Main scheme applicants not currently placed from outside the EU: 15 days after A level results day

Applicants in unplaced states: applicants at 15 days after A level results day

Applicant type	Status	2011	2012	2013	2014	2015
Main scheme	Holding offer	6,300	7,640	8,780	9,260	9,400
	Free to be placed in Clearing	20,830	22,760	23,300	25,430	25,270

AX.14 Main scheme applicants not currently placed from outside the EU: 15 days after A level results day

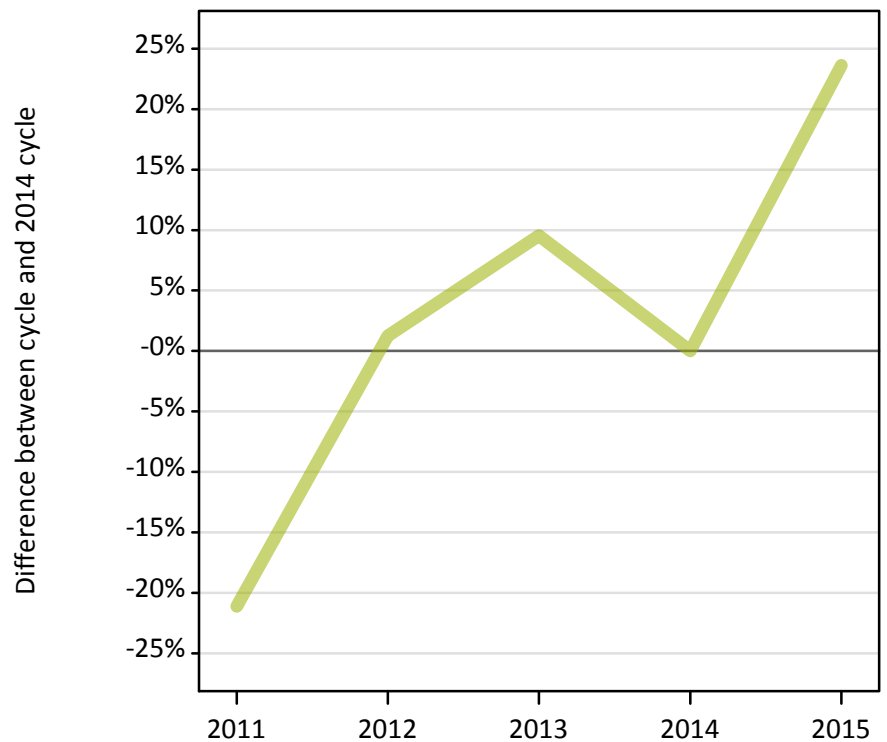
Applicants in unplaced states: difference between cycle and 2014 cycle

Applicant type	Status	2011	2012	2013	2014	2015
Main scheme	Holding offer	-32%	-17%	-5%	0%	2%
	Free to be placed in Clearing	-18%	-11%	-8%	0%	-1%

AX.15 Direct to Clearing applicants from outside the EU: 15 days after A level results day

Placed (Direct to Clearing): difference between cycle and 2014 cycle

Placed (Direct to Clearing)



AX.16 Direct to Clearing applicants from outside the EU: 15 days after A level results day

Direct to Clearing 15 days after A level results day

Applicant type	Status	2011	2012	2013	2014	2015
Direct to Clearing	Placed (Direct to Clearing)	310	400	440	400	490
	Other (Direct to Clearing)	770	780	850	720	810

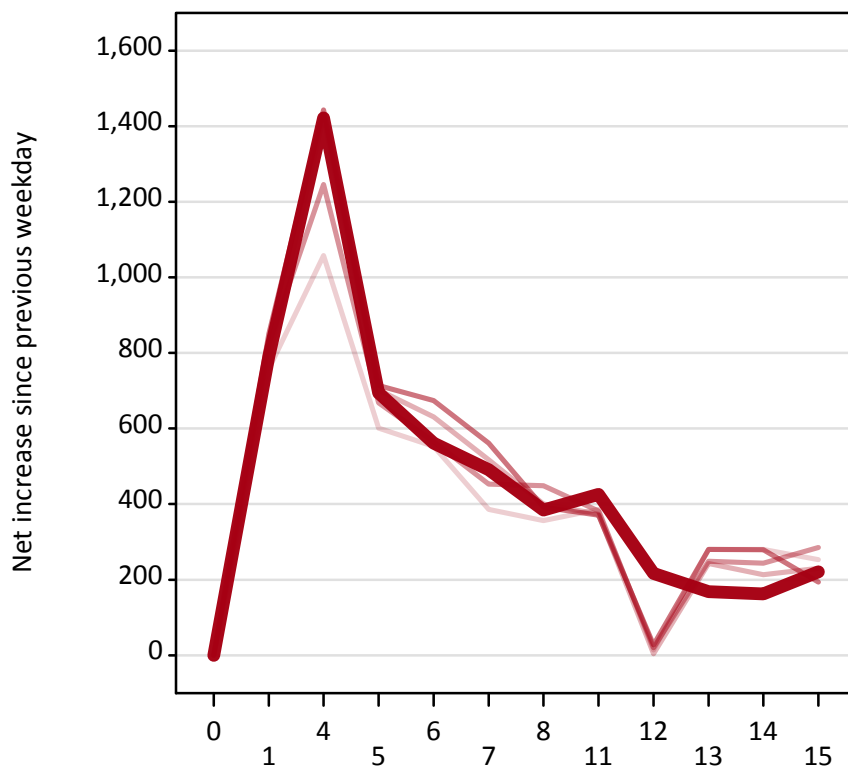
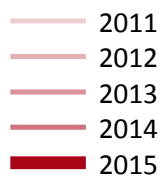
AX.17 Direct to Clearing applicants from outside the EU: 15 days after A level results day

Placed (Direct to Clearing): difference between cycle and 2014 cycle

Applicant type	Status	2011	2012	2013	2014	2015
Direct to Clearing	Placed (Direct to Clearing)	-21%	1%	10%	0%	24%

AX.18 All Placed: Daily net change (from outside the EU)

Net increase since previous weekday (2015 cycle up to 15 days after A level results day)



AX.19 All Placed: Daily net change (from outside the EU)

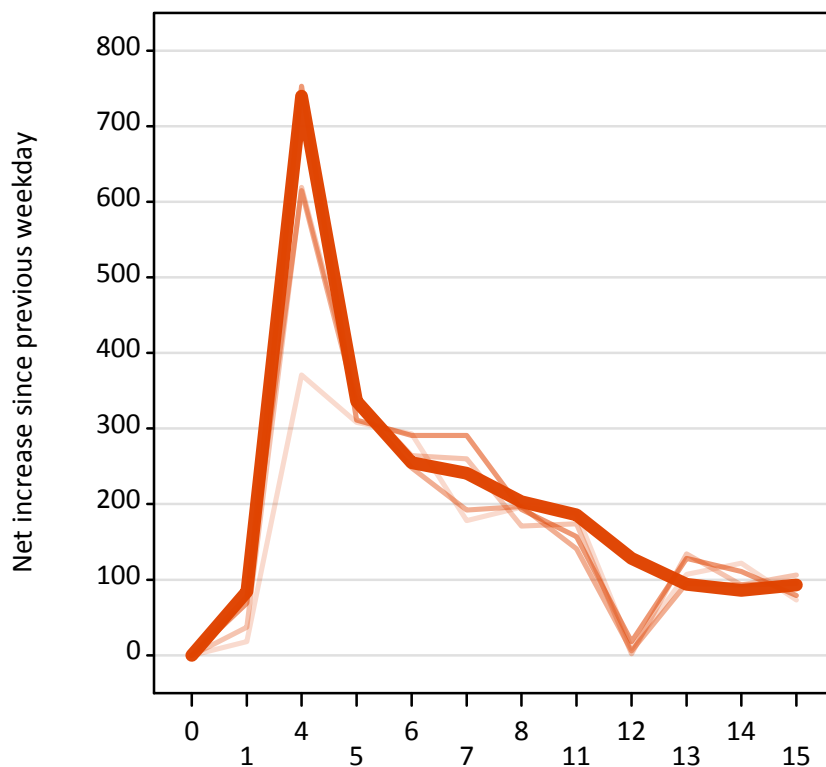
Net increase since previous weekday (2015 cycle up to 15 days after A level results day)

Applicant status, days since A level results day		2011	2012	2013	2014	2015
All Placed	0	0	0	0	0	0
	1	760	790	820	850	790
	4	1,060	1,430	1,250	1,440	1,420
	5	600	700	670	710	690
	6	550	630	570	670	560
	7	390	520	450	560	490
	8	360	400	450	390	380
	11	390	370	380	370	430
	12	10	0	20	30	220
	13	280	240	250	280	170
	14	280	210	240	280	160
	15	250	230	290	190	220

AX.20 Placed through Clearing only: Daily net change (from outside the EU)

Net increase since previous weekday (2015 cycle up to 15 days after A level results day)

- 2011
- 2012
- 2013
- 2014
- 2015



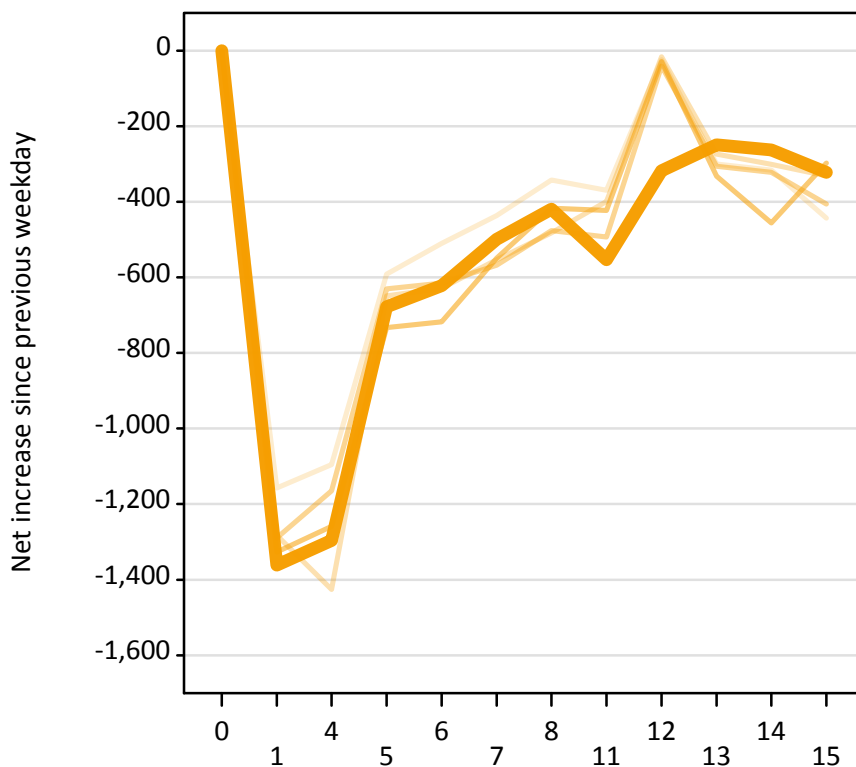
AX.21 Placed through Clearing only: Daily net change (from outside the EU)

Net increase since previous weekday (2015 cycle up to 15 days after A level results day)

Applicant status, days since A level results day		2011	2012	2013	2014	2015
Placed through Clearing only	0	0	0	0	0	0
	1	20	40	80	70	80
	4	370	620	620	750	740
	5	310	340	330	310	340
	6	290	260	250	290	260
	7	180	260	190	290	240
	8	200	170	200	190	200
	11	190	170	140	160	190
	12	10	0	10	20	130
	13	110	130	100	130	90
	14	120	90	90	110	90
	15	70	110	100	80	90

AX.22 Holding Offer: Daily net change (from outside the EU)

Net increase since previous weekday (2015 cycle up to 15 days after A level results day)



AX.23 Holding Offer: Daily net change (from outside the EU)

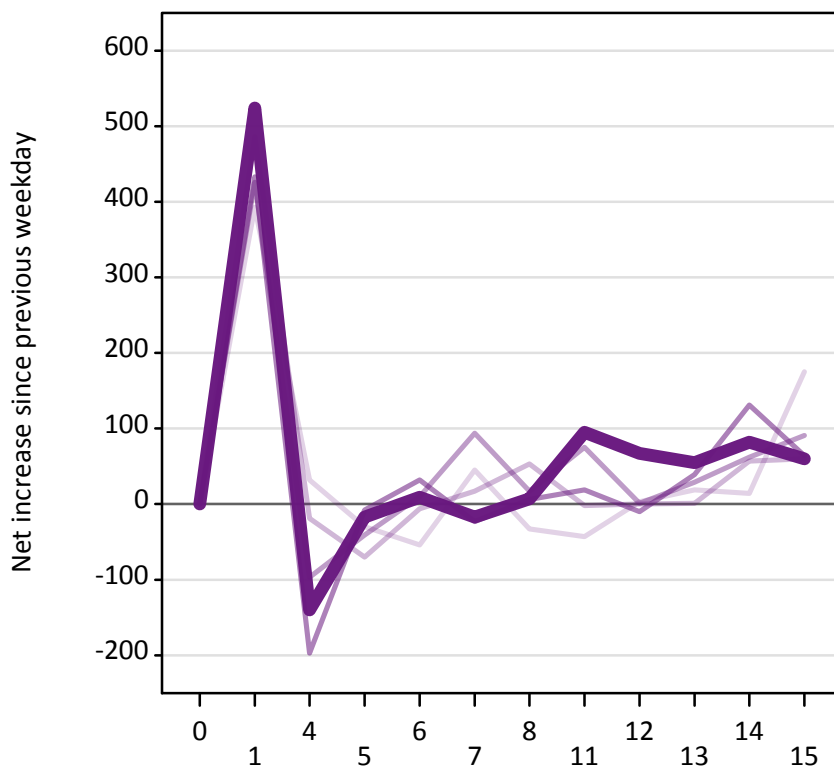
Net increase since previous weekday (2015 cycle up to 15 days after A level results day)

Applicant status, days since A level results day		2011	2012	2013	2014	2015
Holding Offer	0	0	0	0	0	0
	1	-1,160	-1,280	-1,290	-1,330	-1,360
	4	-1,100	-1,430	-1,170	-1,260	-1,300
	5	-590	-650	-630	-730	-680
	6	-510	-630	-620	-720	-620
	7	-440	-550	-570	-550	-500
	8	-340	-480	-480	-420	-420
	11	-370	-400	-490	-420	-550
	12	-20	-20	-40	-30	-320
	13	-300	-270	-310	-330	-250
	14	-320	-300	-320	-460	-260
	15	-440	-330	-410	-300	-320

AX.24 Free to be placed in Clearing: Daily net change (from outside the EU)

Net increase since previous weekday (2015 cycle up to 15 days after A level results day)

- 2011
- 2012
- 2013
- 2014
- 2015



AX.25 Free to be placed in Clearing: Daily net change (from outside the EU)

Net increase since previous weekday (2015 cycle up to 15 days after A level results day)

Applicant status, days since A level results day		2011	2012	2013	2014	2015
Free to be placed in Clearing	0	0	0	0	0	0
	1	390	490	430	430	520
	4	30	-20	-100	-200	-140
	5	-30	-70	-40	-10	-20
	6	-50	-10	10	30	10
	7	50	20	90	-20	-20
	8	-30	50	20	10	10
	11	-40	0	80	20	100
	12	0	0	0	-10	70
	13	20	0	30	40	60
	14	10	60	60	130	80
	15	180	60	90	60	60