

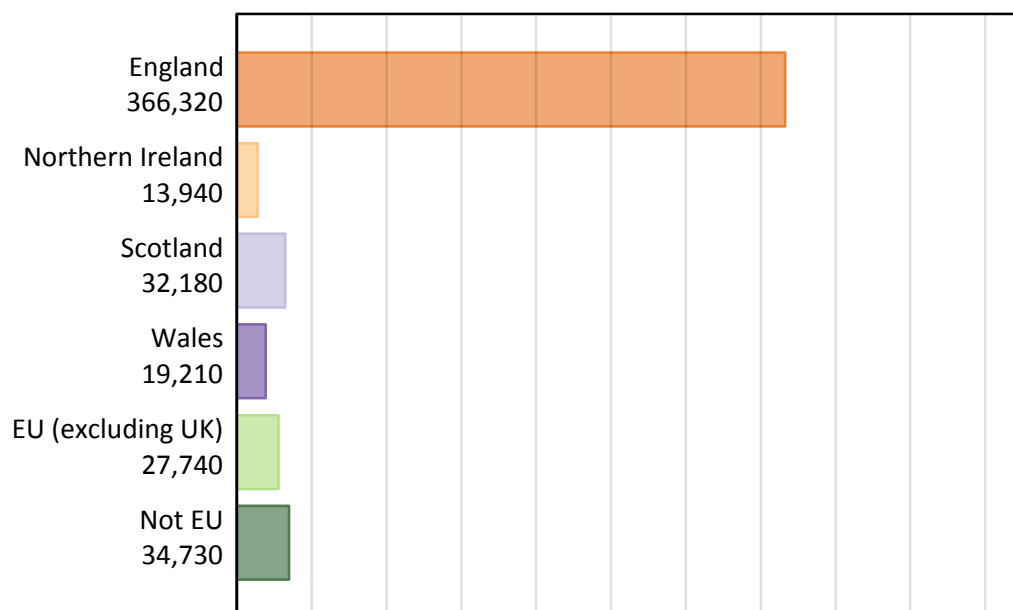
Daily Clearing Analysis: Country

Analysis at 00:05 on Friday 28 August 2015 (15 days after A level results day)

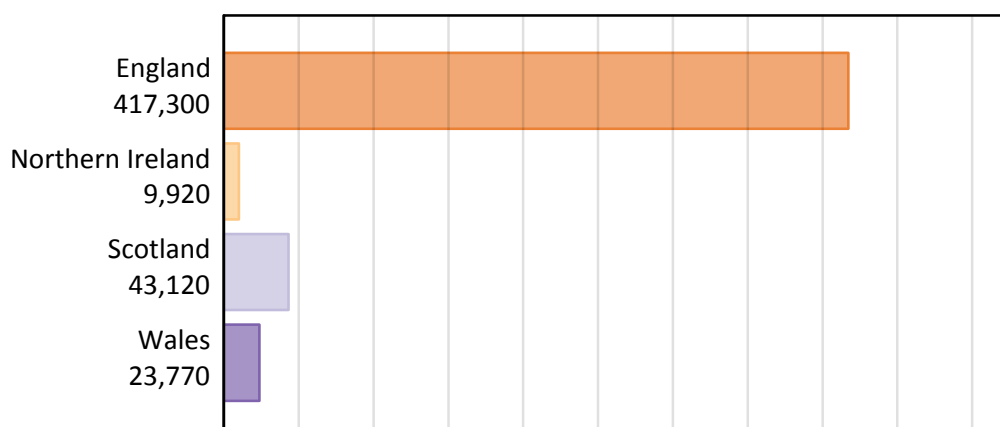
B.1 Placed applicants by country of provider and domicile, 2015 cycle

| Domicile of applicant | Country of provider | | | | |
|-----------------------|---------------------|------------------|----------|--------|---------|
| | England | Northern Ireland | Scotland | Wales | UK |
| England | 350,810 | 570 | 4,600 | 10,350 | 366,320 |
| Northern Ireland | 3,910 | 8,750 | 1,110 | 170 | 13,940 |
| Scotland | 1,610 | 20 | 30,510 | 50 | 32,180 |
| Wales | 8,250 | 10 | 120 | 10,830 | 19,210 |
| EU (excluding UK) | 22,050 | 400 | 4,080 | 1,210 | 27,740 |
| Not EU | 30,670 | 170 | 2,720 | 1,170 | 34,730 |
| All | 417,300 | 9,920 | 43,120 | 23,770 | 494,110 |

B.2 Placed applicants by domicile group

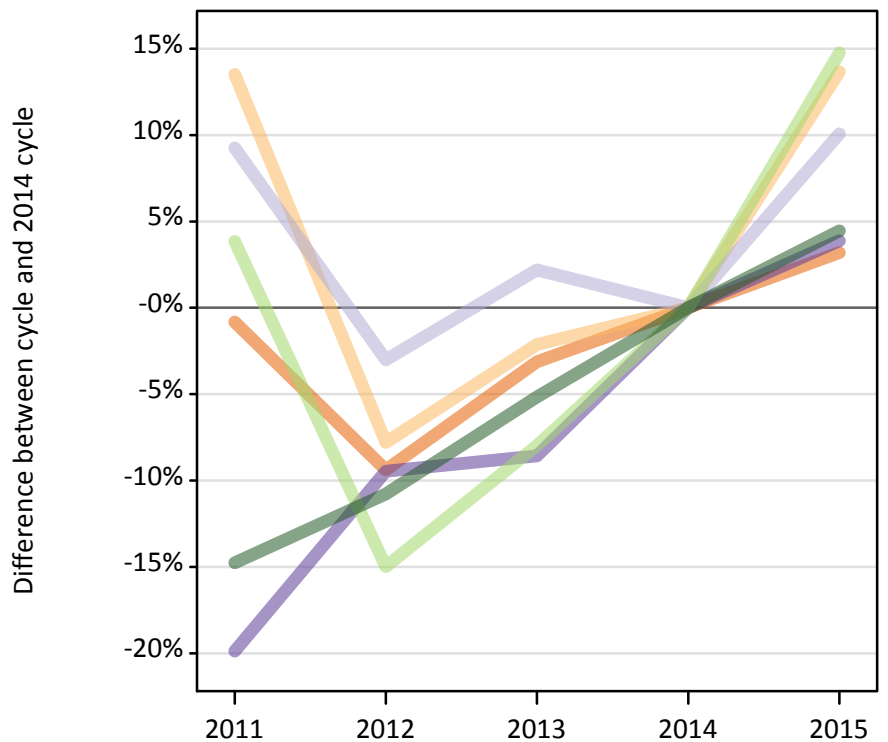
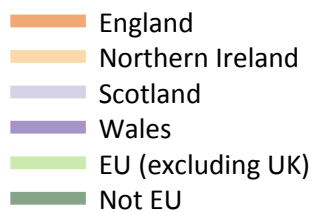


B.3 Placed applicants by country of provider



B.4 Placed applicants at 15 days after A level results day: providers in England

Selected applicant domiciles: difference between cycle and 2014 cycle (at 15 days after A level results day)



B.5 Placed applicants at 15 days after A level results day: providers in England

Placed applicants by domicile (at 15 days after A level results day)

| Domicile of applicant | 2011 | 2012 | 2013 | 2014 | 2015 |
|-----------------------|---------|---------|---------|---------|---------|
| England | 337,180 | 308,070 | 329,350 | 339,980 | 350,810 |
| Northern Ireland | 3,900 | 3,170 | 3,370 | 3,440 | 3,910 |
| Scotland | 1,600 | 1,420 | 1,490 | 1,460 | 1,610 |
| Wales | 6,370 | 7,190 | 7,260 | 7,950 | 8,250 |
| EU (excluding UK) | 19,950 | 16,330 | 17,680 | 19,210 | 22,050 |
| Not EU | 25,030 | 26,200 | 27,850 | 29,360 | 30,670 |

B.6 Placed applicants at 15 days after A level results day: providers in England

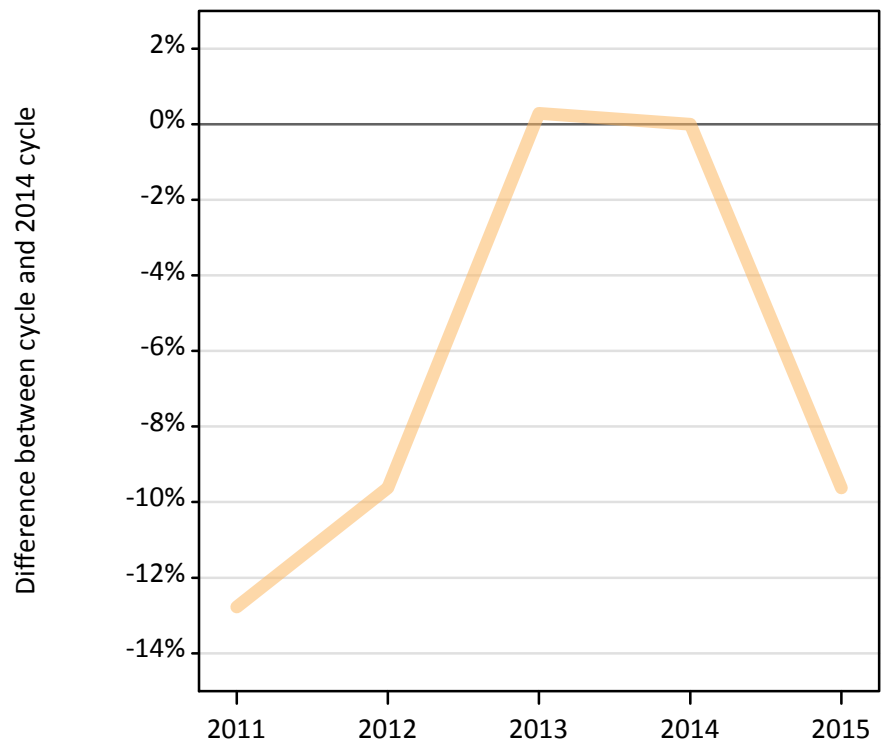
Selected applicant domiciles: difference between cycle and 2014 cycle (at 15 days after A level results day)

| Domicile of applicant | 2011 | 2012 | 2013 | 2014 | 2015 |
|-----------------------|------|------|------|------|------|
| England | -1% | -9% | -3% | 0% | 3% |
| Northern Ireland | 14% | -8% | -2% | 0% | 14% |
| Scotland | 9% | -3% | 2% | 0% | 10% |
| Wales | -20% | -9% | -9% | 0% | 4% |
| EU (excluding UK) | 4% | -15% | -8% | 0% | 15% |
| Not EU | -15% | -11% | -5% | 0% | 4% |

B.7 Placed applicants at 15 days after A level results day: providers in Northern Ireland

Selected applicant domiciles: difference between cycle and 2014 cycle (at 15 days after A level results day)

— Northern Ireland



B.8 Placed applicants at 15 days after A level results day: providers in Northern Ireland

Placed applicants by domicile (at 15 days after A level results day)

| Domicile of applicant | 2011 | 2012 | 2013 | 2014 | 2015 |
|-----------------------|-------|-------|-------|-------|-------|
| England | 240 | 260 | 260 | 440 | 570 |
| Northern Ireland | 8,440 | 8,750 | 9,710 | 9,680 | 8,750 |
| Scotland | 20 | 30 | 20 | 20 | 20 |
| Wales | 10 | 0 | 10 | 10 | 10 |
| EU (excluding UK) | 430 | 420 | 440 | 470 | 400 |
| Not EU | 110 | 170 | 180 | 200 | 170 |

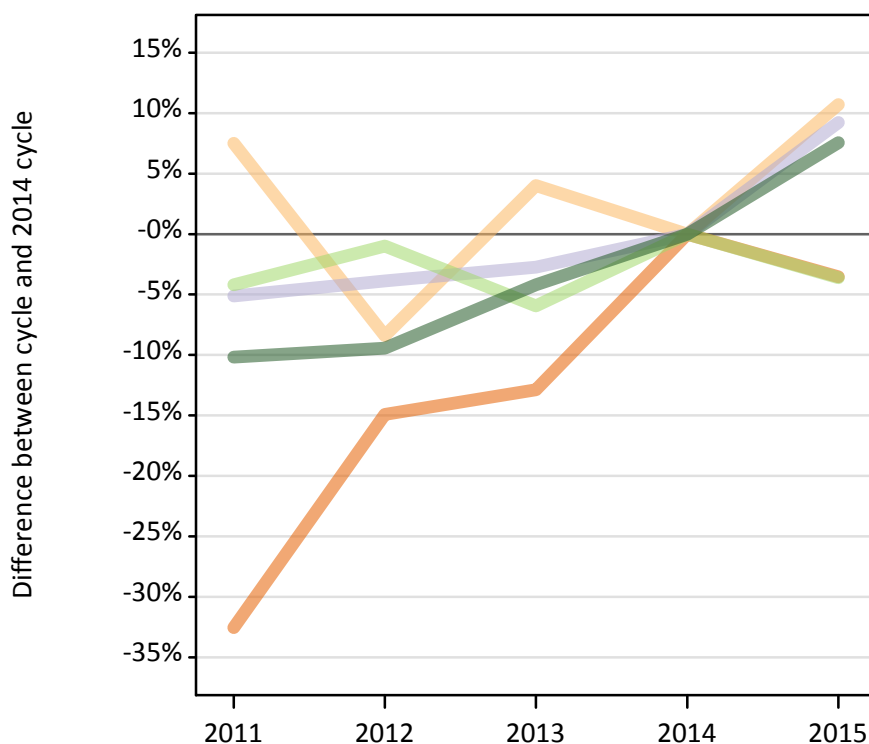
B.9 Placed applicants at 15 days after A level results day: providers in Northern Ireland

Selected applicant domiciles: difference between cycle and 2014 cycle (at 15 days after A level results day)

| Domicile of applicant | 2011 | 2012 | 2013 | 2014 | 2015 |
|-----------------------|------|------|------|------|------|
| Northern Ireland | -13% | -10% | 0% | 0% | -10% |

B.10 Placed applicants at 15 days after A level results day: providers in Scotland

Selected applicant domiciles: difference between cycle and 2014 cycle (at 15 days after A level results day)



B.11 Placed applicants at 15 days after A level results day: providers in Scotland

Placed applicants by domicile (at 15 days after A level results day)

| Domicile of applicant | 2011 | 2012 | 2013 | 2014 | 2015 |
|-----------------------|--------|--------|--------|--------|--------|
| England | 3,210 | 4,050 | 4,150 | 4,760 | 4,600 |
| Northern Ireland | 1,070 | 920 | 1,040 | 1,000 | 1,110 |
| Scotland | 26,500 | 26,850 | 27,170 | 27,930 | 30,510 |
| Wales | 90 | 120 | 110 | 110 | 120 |
| EU (excluding UK) | 4,060 | 4,190 | 3,980 | 4,230 | 4,080 |
| Not EU | 2,270 | 2,290 | 2,420 | 2,530 | 2,720 |

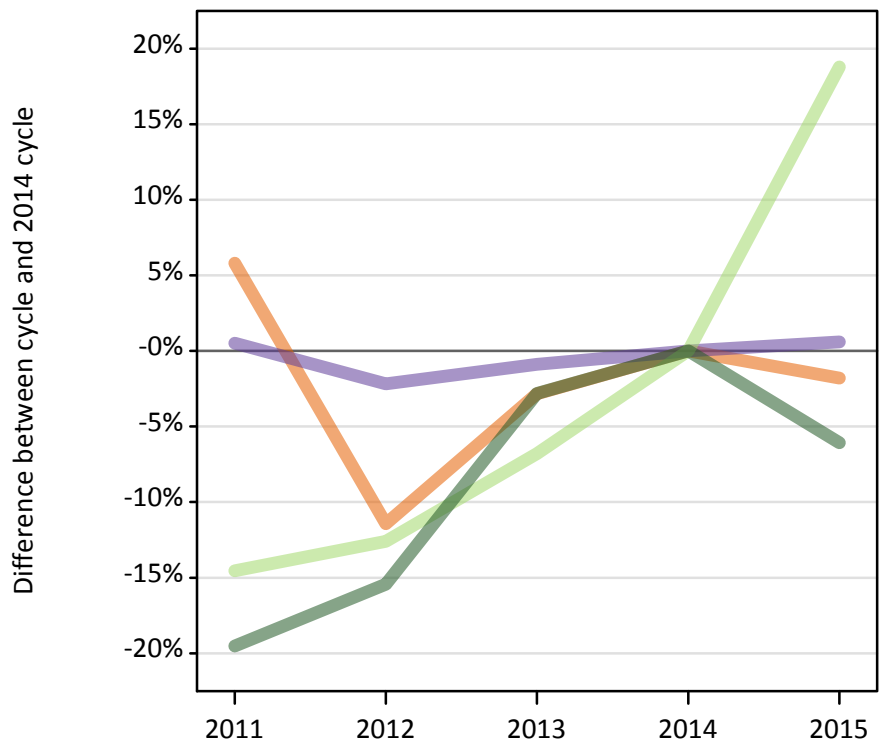
B.12 Placed applicants at 15 days after A level results day: providers in Scotland

Selected applicant domiciles: difference between cycle and 2014 cycle (at 15 days after A level results day)

| Domicile of applicant | 2011 | 2012 | 2013 | 2014 | 2015 |
|-----------------------|------|------|------|------|------|
| England | -33% | -15% | -13% | 0% | -4% |
| Northern Ireland | 8% | -8% | 4% | 0% | 11% |
| Scotland | -5% | -4% | -3% | 0% | 9% |
| EU (excluding UK) | -4% | -1% | -6% | 0% | -4% |
| Not EU | -10% | -9% | -4% | 0% | 8% |

B.13 Placed applicants at 15 days after A level results day: providers in Wales

Selected applicant domiciles: difference between cycle and 2014 cycle (at 15 days after A level results day)



B.14 Placed applicants at 15 days after A level results day: providers in Wales

Placed applicants by domicile (at 15 days after A level results day)

| Domicile of applicant | 2011 | 2012 | 2013 | 2014 | 2015 |
|-----------------------|--------|--------|--------|--------|--------|
| England | 11,150 | 9,330 | 10,240 | 10,540 | 10,350 |
| Northern Ireland | 200 | 140 | 160 | 150 | 170 |
| Scotland | 70 | 50 | 60 | 60 | 50 |
| Wales | 10,820 | 10,530 | 10,670 | 10,760 | 10,830 |
| EU (excluding UK) | 870 | 890 | 950 | 1,020 | 1,210 |
| Not EU | 1,010 | 1,060 | 1,220 | 1,250 | 1,170 |

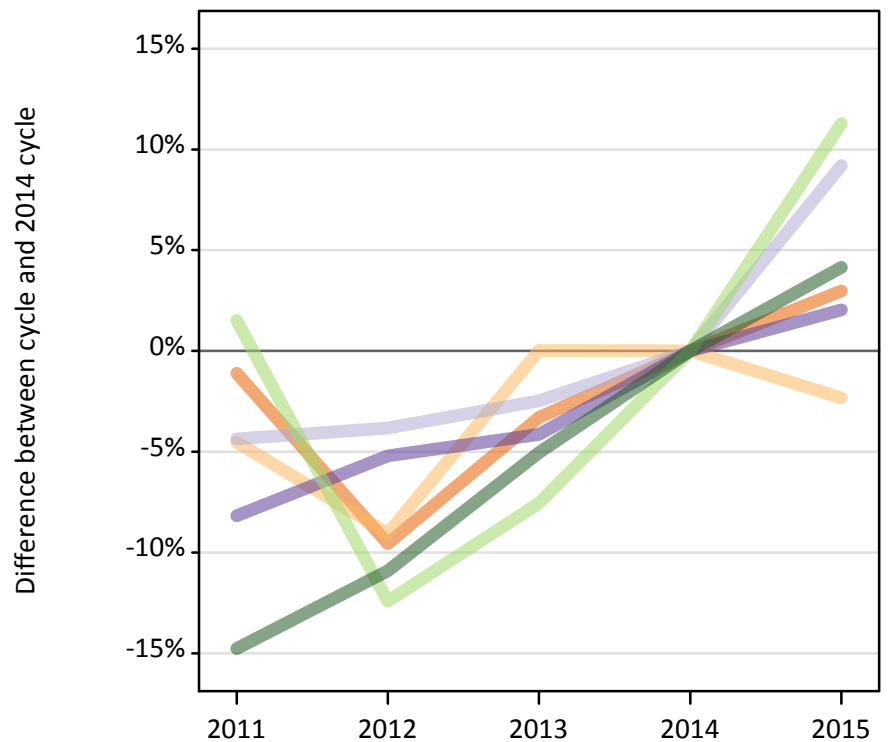
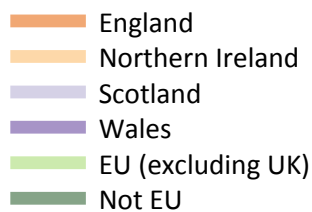
B.15 Placed applicants at 15 days after A level results day: providers in Wales

Selected applicant domiciles: difference between cycle and 2014 cycle (at 15 days after A level results day)

| Domicile of applicant | 2011 | 2012 | 2013 | 2014 | 2015 |
|-----------------------|------|------|------|------|------|
| England | 6% | -11% | -3% | 0% | -2% |
| Wales | 1% | -2% | -1% | 0% | 1% |
| EU (excluding UK) | -15% | -13% | -7% | 0% | 19% |
| Not EU | -20% | -15% | -3% | 0% | -6% |

B.16 Placed applicants at 15 days after A level results day: providers in the UK

Selected applicant domiciles: difference between cycle and 2014 cycle (at 15 days after A level results day)



B.17 Placed applicants at 15 days after A level results day: providers in the UK

Placed applicants by domicile (at 15 days after A level results day)

| Domicile of applicant | 2011 | 2012 | 2013 | 2014 | 2015 |
|-----------------------|---------|---------|---------|---------|---------|
| England | 351,790 | 321,710 | 344,000 | 355,720 | 366,320 |
| Northern Ireland | 13,630 | 12,980 | 14,270 | 14,270 | 13,940 |
| Scotland | 28,180 | 28,340 | 28,740 | 29,470 | 32,180 |
| Wales | 17,280 | 17,840 | 18,040 | 18,820 | 19,210 |
| EU (excluding UK) | 25,300 | 21,830 | 23,040 | 24,930 | 27,740 |
| Not EU | 28,420 | 29,710 | 31,660 | 33,340 | 34,730 |

B.18 Placed applicants at 15 days after A level results day: providers in the UK

Selected applicant domiciles: difference between cycle and 2014 cycle (at 15 days after A level results day)

| Domicile of applicant | 2011 | 2012 | 2013 | 2014 | 2015 |
|-----------------------|------|------|------|------|------|
| England | -1% | -10% | -3% | 0% | 3% |
| Northern Ireland | -5% | -9% | 0% | 0% | -2% |
| Scotland | -4% | -4% | -2% | 0% | 9% |
| Wales | -8% | -5% | -4% | 0% | 2% |
| EU (excluding UK) | 2% | -12% | -8% | 0% | 11% |
| Not EU | -15% | -11% | -5% | 0% | 4% |