

## Applicants by sex and age at the 30 June deadline

### I.2.1 Applicants by sex : All domiciles

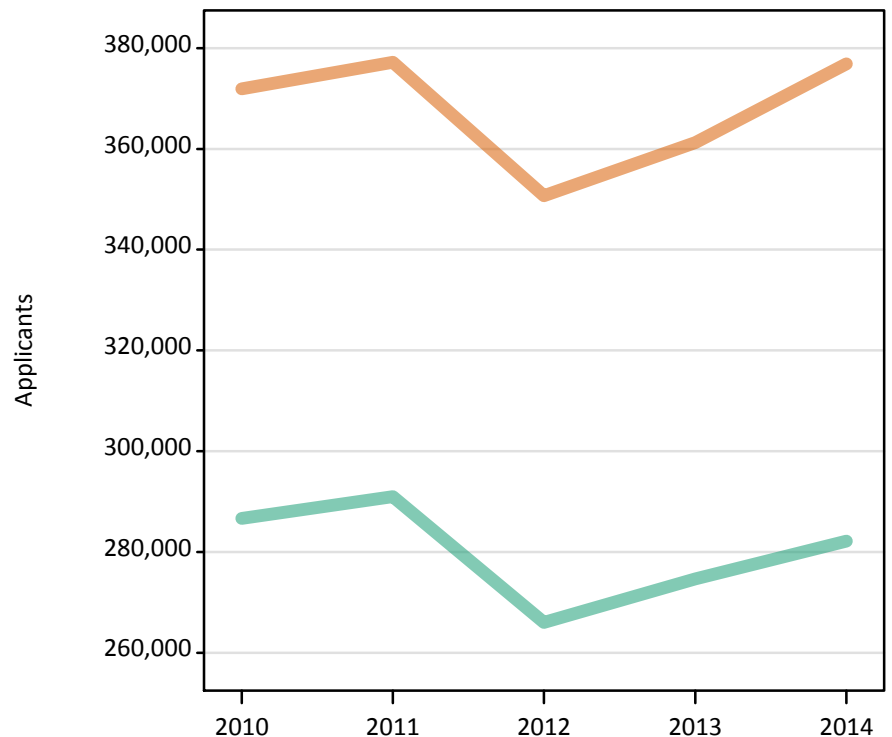
Difference between cycle and 2013 cycle

Men  
Women



### I.2.2 Applicants by sex : All domiciles

Men  
Women



### I.2.3 Applicants by age and sex : All domiciles

Age group and sex of applicant		2010	2011	2012	2013	2014
Under 18	Women	5,240	5,220	5,260	5,580	6,340
	Men	3,730	3,880	4,110	4,510	4,810
18	Women	164,510	165,370	161,980	164,560	169,690
	Men	131,880	132,200	127,310	129,790	133,980
19	Women	69,120	73,320	63,620	69,470	72,330
	Men	58,950	62,470	53,450	58,720	59,750
20-24	Women	74,590	75,790	68,440	70,460	74,180
	Men	61,680	63,100	55,530	56,390	57,620
25-29	Women	23,250	22,930	20,440	20,900	22,010
	Men	14,210	13,490	11,560	11,720	11,850
30-34	Women	13,020	13,180	12,110	12,090	12,500
	Men	6,700	6,720	5,770	5,550	5,620
35 and over	Women	22,170	21,360	18,840	18,220	19,810
	Men	9,510	9,110	8,290	7,960	8,540
All ages	Women	371,910	377,180	350,680	361,270	376,860
	Men	286,650	290,970	266,020	274,640	282,170

### I.2.4 Applicants by age and sex : All domiciles

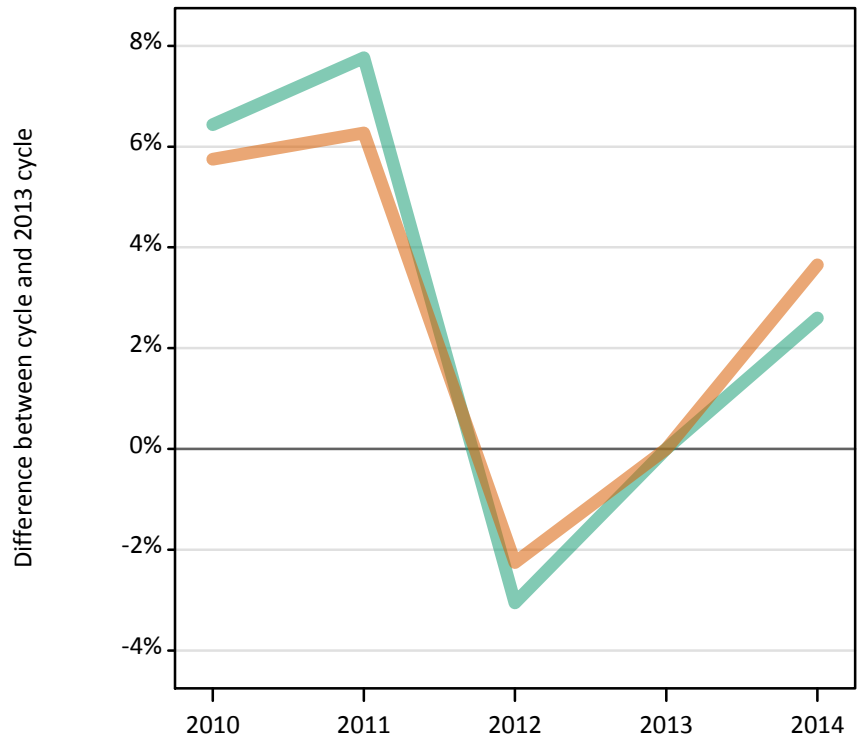
Difference between cycle and 2013 cycle

Age group and sex of applicant		2010	2011	2012	2013	2014
Under 18	Women	-6%	-6%	-6%	0%	14%
	Men	-17%	-14%	-9%	0%	7%
18	Women	-0%	0%	-2%	0%	3%
	Men	2%	2%	-2%	0%	3%
19	Women	-0%	6%	-8%	0%	4%
	Men	0%	6%	-9%	0%	2%
20-24	Women	6%	8%	-3%	0%	5%
	Men	9%	12%	-2%	0%	2%
25-29	Women	11%	10%	-2%	0%	5%
	Men	21%	15%	-1%	0%	1%
30-34	Women	8%	9%	0%	0%	3%
	Men	21%	21%	4%	0%	1%
35 and over	Women	22%	17%	3%	0%	9%
	Men	20%	14%	4%	0%	7%
All ages	Women	3%	4%	-3%	0%	4%
	Men	4%	6%	-3%	0%	3%

### I.2.5 Applicants by sex : UK

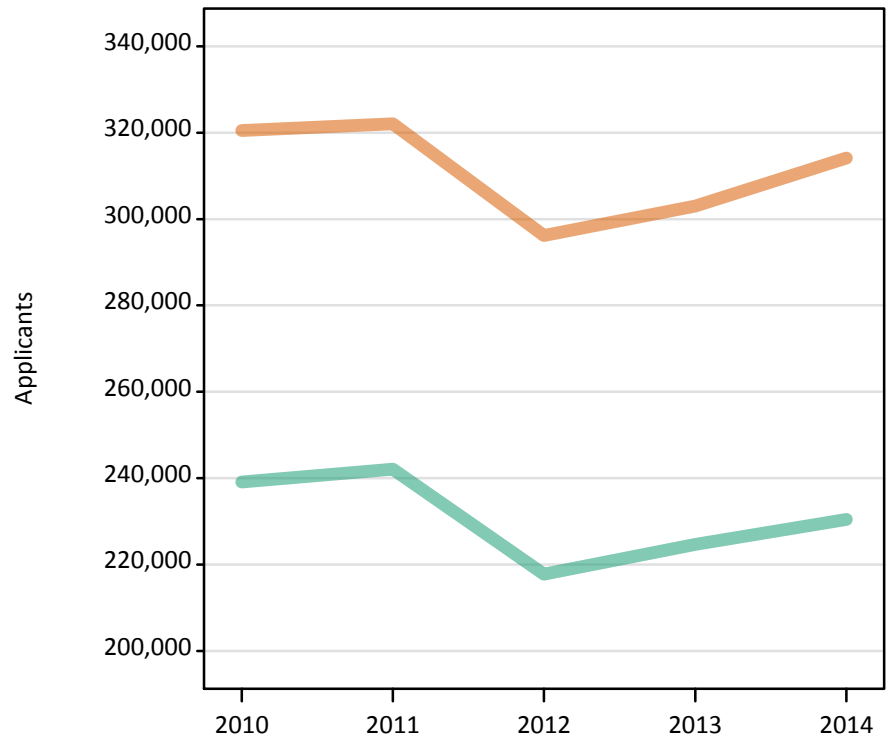
Difference between cycle and 2013 cycle

Men  
Women



### I.2.6 Applicants by sex : UK

Men  
Women



## I.2.7 Applicants by age and sex : UK

Age group and sex of applicant		2010	2011	2012	2013	2014
Under 18	Women	1,580	1,350	1,050	940	1,000
	Men	980	910	780	740	710
18	Women	149,030	148,350	144,270	144,900	148,460
	Men	119,420	119,030	113,150	114,490	117,510
19	Women	55,370	58,050	48,510	53,640	55,030
	Men	47,040	49,490	41,010	45,830	46,390
20-24	Women	59,260	59,930	53,680	55,020	58,040
	Men	45,360	46,900	40,450	41,350	42,630
25-29	Women	21,130	20,860	18,700	19,130	20,210
	Men	11,500	11,090	9,490	9,770	10,070
30-34	Women	12,410	12,580	11,570	11,560	12,000
	Men	5,850	5,990	5,100	4,930	5,040
35 and over	Women	21,690	20,940	18,420	17,850	19,390
	Men	8,950	8,650	7,810	7,520	8,130
All ages	Women	320,470	322,060	296,200	303,040	314,120
	Men	239,090	242,070	217,770	224,630	230,460

## I.2.8 Applicants by age and sex : UK

Difference between cycle and 2013 cycle

Age group and sex of applicant		2010	2011	2012	2013	2014
Under 18	Women	67%	43%	11%	0%	6%
	Men	32%	24%	5%	0%	-4%
18	Women	3%	2%	-0%	0%	2%
	Men	4%	4%	-1%	0%	3%
19	Women	3%	8%	-10%	0%	3%
	Men	3%	8%	-11%	0%	1%
20-24	Women	8%	9%	-2%	0%	5%
	Men	10%	13%	-2%	0%	3%
25-29	Women	10%	9%	-2%	0%	6%
	Men	18%	14%	-3%	0%	3%
30-34	Women	7%	9%	0%	0%	4%
	Men	19%	22%	3%	0%	2%
35 and over	Women	22%	17%	3%	0%	9%
	Men	19%	15%	4%	0%	8%
All ages	Women	6%	6%	-2%	0%	4%
	Men	6%	8%	-3%	0%	3%

### I.2.9 Applicants by sex : England

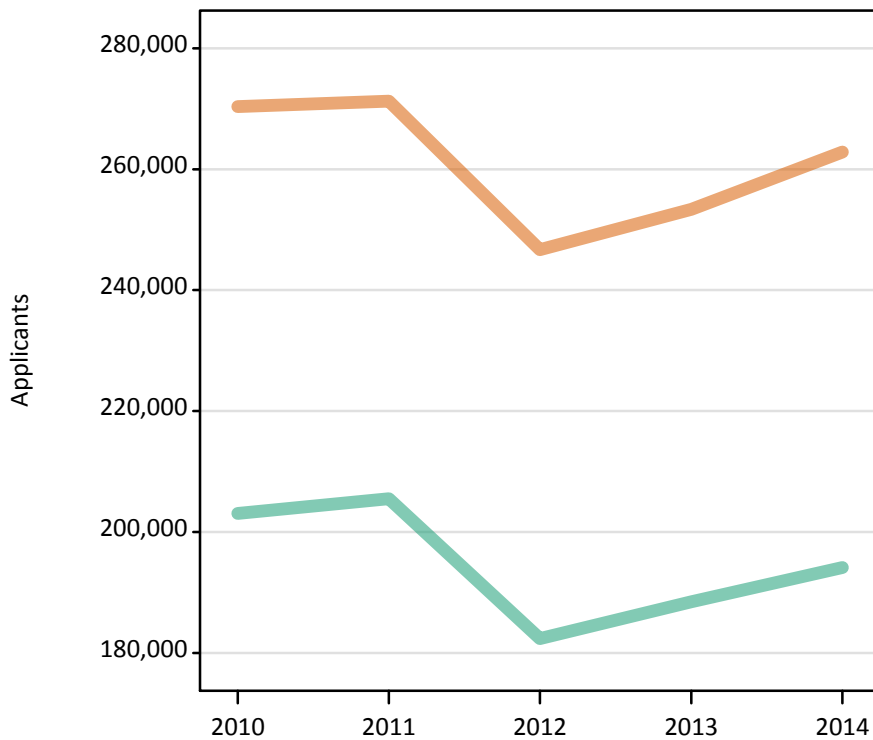
Difference between cycle and 2013 cycle

Men  
Women



### I.2.10 Applicants by sex : England

Men  
Women



### I.2.11 Applicants by age and sex : England

Age group and sex of applicant		2010	2011	2012	2013	2014
Under 18	Women	900	730	510	490	550
	Men	560	510	420	420	420
18	Women	124,040	124,000	119,920	121,030	124,140
	Men	100,610	100,450	95,260	96,510	99,420
19	Women	48,560	50,650	41,380	46,420	47,720
	Men	41,750	43,860	35,560	40,310	40,750
20-24	Women	49,580	49,540	43,650	44,560	47,100
	Men	38,090	39,240	32,710	33,070	34,480
25-29	Women	17,750	17,390	15,440	15,700	16,500
	Men	9,380	8,910	7,560	7,690	7,970
30-34	Women	10,700	10,730	9,870	9,770	10,080
	Men	4,930	5,030	4,150	4,010	4,090
35 and over	Women	18,840	18,240	15,940	15,390	16,740
	Men	7,720	7,510	6,720	6,440	6,960
All ages	Women	270,370	271,260	246,710	253,350	262,830
	Men	203,040	205,510	182,380	188,450	194,100

### I.2.12 Applicants by age and sex : England

Difference between cycle and 2013 cycle

Age group and sex of applicant		2010	2011	2012	2013	2014
Under 18	Women	82%	48%	4%	0%	12%
	Men	34%	21%	1%	0%	0%
18	Women	2%	2%	-1%	0%	3%
	Men	4%	4%	-1%	0%	3%
19	Women	5%	9%	-11%	0%	3%
	Men	4%	9%	-12%	0%	1%
20-24	Women	11%	11%	-2%	0%	6%
	Men	15%	19%	-1%	0%	4%
25-29	Women	13%	11%	-2%	0%	5%
	Men	22%	16%	-2%	0%	4%
30-34	Women	10%	10%	1%	0%	3%
	Men	23%	25%	3%	0%	2%
35 and over	Women	22%	19%	4%	0%	9%
	Men	20%	17%	4%	0%	8%
All ages	Women	7%	7%	-3%	0%	4%
	Men	8%	9%	-3%	0%	3%

### I.2.13 Applicants by sex : Northern Ireland

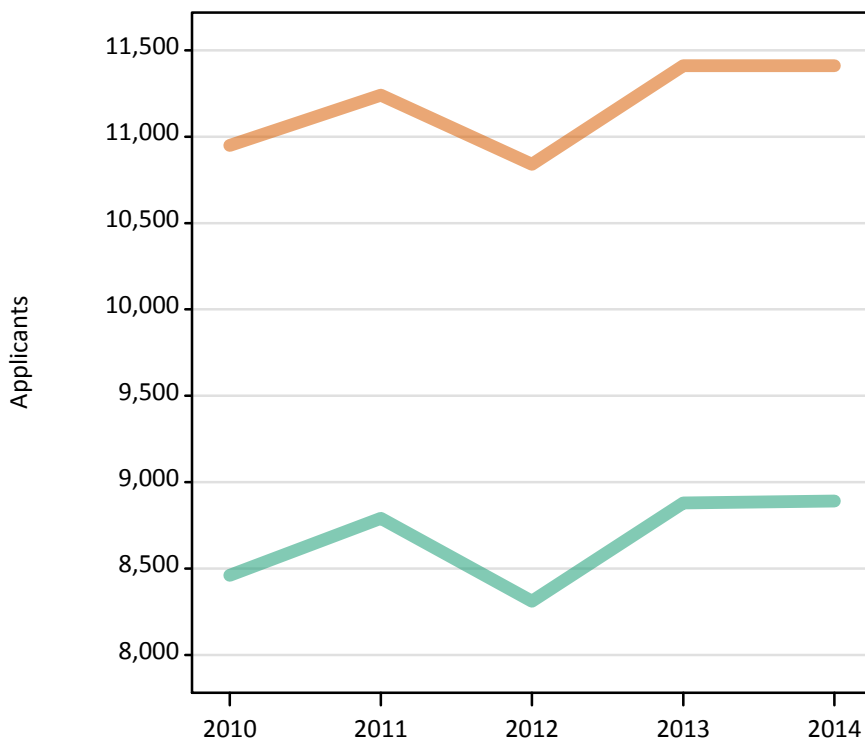
Difference between cycle and 2013 cycle

Men  
Women



### I.2.14 Applicants by sex : Northern Ireland

Men  
Women



### I.2.15 Applicants by age and sex : Northern Ireland

Age group and sex of applicant		2010	2011	2012	2013	2014
Under 18	Women	30	30	30	20	20
	Men	20	20	20	20	10
18	Women	6,850	6,740	6,710	6,540	6,410
	Men	5,230	5,220	5,000	5,170	5,090
19	Women	1,430	1,720	1,530	1,700	1,690
	Men	1,200	1,390	1,230	1,340	1,430
20-24	Women	1,710	1,830	1,740	2,010	2,110
	Men	1,500	1,590	1,570	1,810	1,810
25-29	Women	470	480	430	570	600
	Men	300	350	280	320	300
30-34	Women	180	180	180	260	270
	Men	100	110	110	110	120
35 and over	Women	290	270	220	320	320
	Men	120	110	120	130	130
All ages	Women	10,950	11,240	10,840	11,410	11,410
	Men	8,460	8,790	8,310	8,880	8,890

### I.2.16 Applicants by age and sex : Northern Ireland

Difference between cycle and 2013 cycle

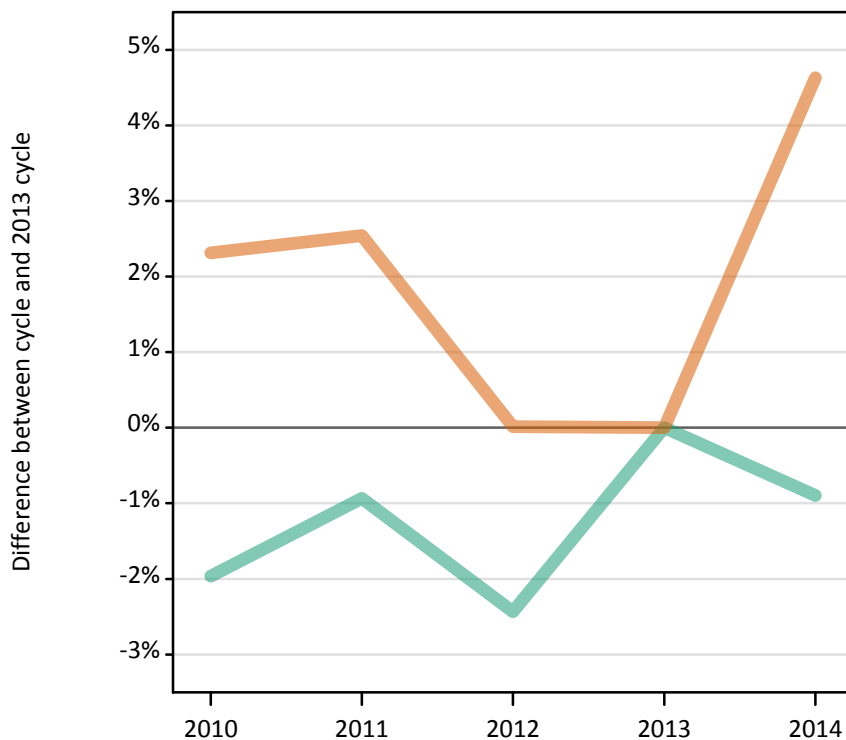
Age group and sex of applicant		2010	2011	2012	2013	2014
Under 18	Women	89%	44%	83%	0%	-6%
	Men	21%	16%	-11%	0%	-42%
18	Women	5%	3%	3%	0%	-2%
	Men	1%	1%	-3%	0%	-1%
19	Women	-16%	1%	-10%	0%	-1%
	Men	-11%	4%	-8%	0%	7%
20-24	Women	-15%	-9%	-13%	0%	5%
	Men	-17%	-12%	-13%	0%	0%
25-29	Women	-18%	-15%	-25%	0%	5%
	Men	-7%	9%	-12%	0%	-6%
30-34	Women	-32%	-31%	-31%	0%	2%
	Men	-6%	1%	-2%	0%	8%
35 and over	Women	-8%	-16%	-30%	0%	1%
	Men	-2%	-13%	-6%	0%	4%
All ages	Women	-4%	-2%	-5%	0%	-0%
	Men	-5%	-1%	-6%	0%	0%



### I.2.17 Applicants by sex : Scotland

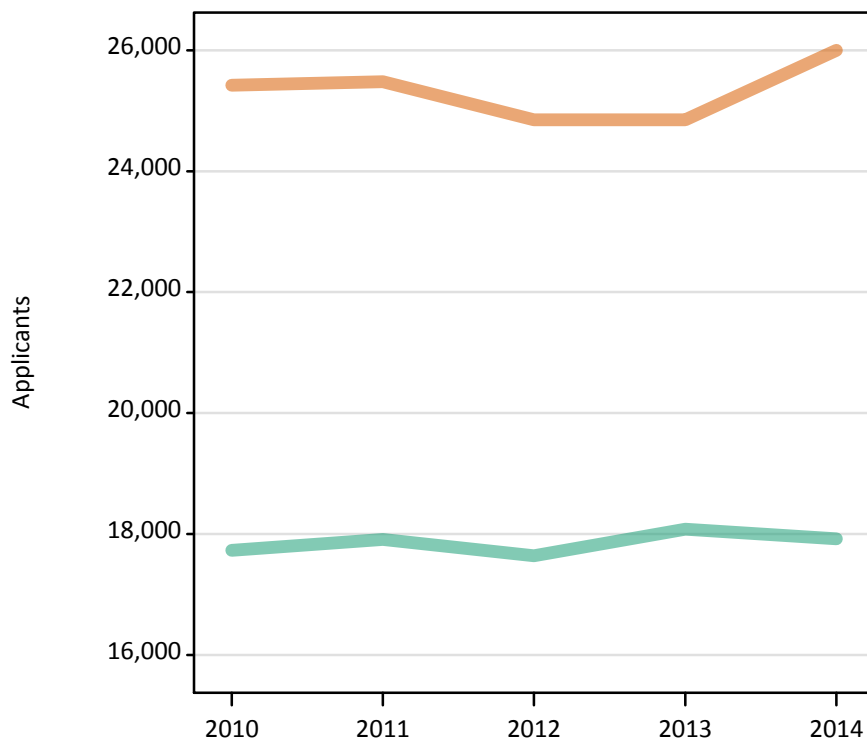
Difference between cycle and 2013 cycle

Men  
Women



### I.2.18 Applicants by sex : Scotland

Men  
Women



### I.2.19 Applicants by age and sex : Scotland

Age group and sex of applicant		2010	2011	2012	2013	2014
Under 18	Women	620	560	490	410	420
	Men	380	370	320	280	260
18	Women	11,320	11,010	11,030	10,920	11,320
	Men	8,430	8,350	8,070	8,110	8,040
19	Women	3,120	3,270	3,300	3,210	3,210
	Men	2,300	2,350	2,380	2,350	2,320
20-24	Women	5,570	5,920	5,670	5,960	6,270
	Men	3,910	4,200	4,320	4,710	4,570
25-29	Women	1,970	1,970	1,900	1,890	2,090
	Men	1,340	1,330	1,210	1,310	1,340
30-34	Women	1,030	1,120	980	1,020	1,110
	Men	600	620	610	620	630
35 and over	Women	1,790	1,640	1,470	1,440	1,580
	Men	770	710	720	690	750
All ages	Women	25,420	25,480	24,850	24,850	26,000
	Men	17,730	17,910	17,640	18,080	17,920

### I.2.20 Applicants by age and sex : Scotland

Difference between cycle and 2013 cycle

Age group and sex of applicant		2010	2011	2012	2013	2014
Under 18	Women	50%	37%	19%	0%	2%
	Men	33%	31%	15%	0%	-7%
18	Women	4%	1%	1%	0%	4%
	Men	4%	3%	-0%	0%	-1%
19	Women	-3%	2%	3%	0%	0%
	Men	-2%	-0%	1%	0%	-1%
20-24	Women	-7%	-1%	-5%	0%	5%
	Men	-17%	-11%	-8%	0%	-3%
25-29	Women	5%	4%	1%	0%	11%
	Men	2%	1%	-8%	0%	2%
30-34	Women	1%	9%	-4%	0%	8%
	Men	-4%	-0%	-2%	0%	1%
35 and over	Women	24%	14%	2%	0%	10%
	Men	11%	2%	3%	0%	9%
All ages	Women	2%	3%	0%	0%	5%
	Men	-2%	-1%	-2%	0%	-1%

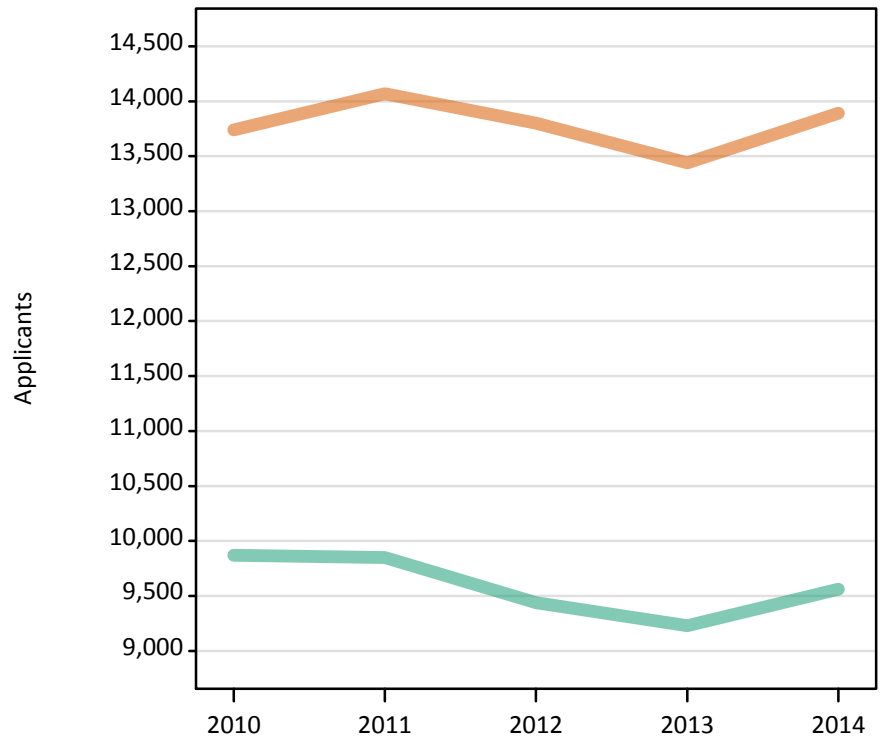
**I.2.21 Applicants by sex : Wales**  
Difference between cycle and 2013 cycle

Men  
Women



**I.2.22 Applicants by sex : Wales**

Men  
Women



### I.2.23 Applicants by age and sex : Wales

Age group and sex of applicant		2010	2011	2012	2013	2014
Under 18	Women	40	30	10	30	20
	Men	20	20	20	20	20
18	Women	6,820	6,610	6,610	6,410	6,590
	Men	5,150	5,020	4,810	4,710	4,950
19	Women	2,270	2,420	2,300	2,320	2,420
	Men	1,790	1,890	1,840	1,830	1,890
20-24	Women	2,410	2,640	2,610	2,490	2,550
	Men	1,880	1,870	1,840	1,770	1,760
25-29	Women	940	1,020	930	970	1,020
	Men	490	500	440	450	460
30-34	Women	500	550	540	510	550
	Men	220	230	230	190	200
35 and over	Women	780	800	790	710	740
	Men	340	320	260	260	290
All ages	Women	13,740	14,070	13,800	13,440	13,890
	Men	9,870	9,850	9,440	9,230	9,560

### I.2.24 Applicants by age and sex : Wales

Difference between cycle and 2013 cycle

Age group and sex of applicant		2010	2011	2012	2013	2014
Under 18	Women	44%	32%	-48%	0%	-40%
	Men	-10%	-10%	-25%	0%	-25%
18	Women	6%	3%	3%	0%	3%
	Men	9%	7%	2%	0%	5%
19	Women	-2%	4%	-1%	0%	4%
	Men	-2%	3%	0%	0%	3%
20-24	Women	-3%	6%	5%	0%	3%
	Men	6%	5%	4%	0%	-1%
25-29	Women	-4%	5%	-4%	0%	5%
	Men	9%	12%	-2%	0%	3%
30-34	Women	-3%	8%	5%	0%	8%
	Men	17%	22%	22%	0%	7%
35 and over	Women	9%	13%	12%	0%	5%
	Men	29%	21%	0%	0%	10%
All ages	Women	2%	5%	3%	0%	3%
	Men	7%	7%	2%	0%	4%

### I.2.25 Applicants by sex : EU (excluding UK)

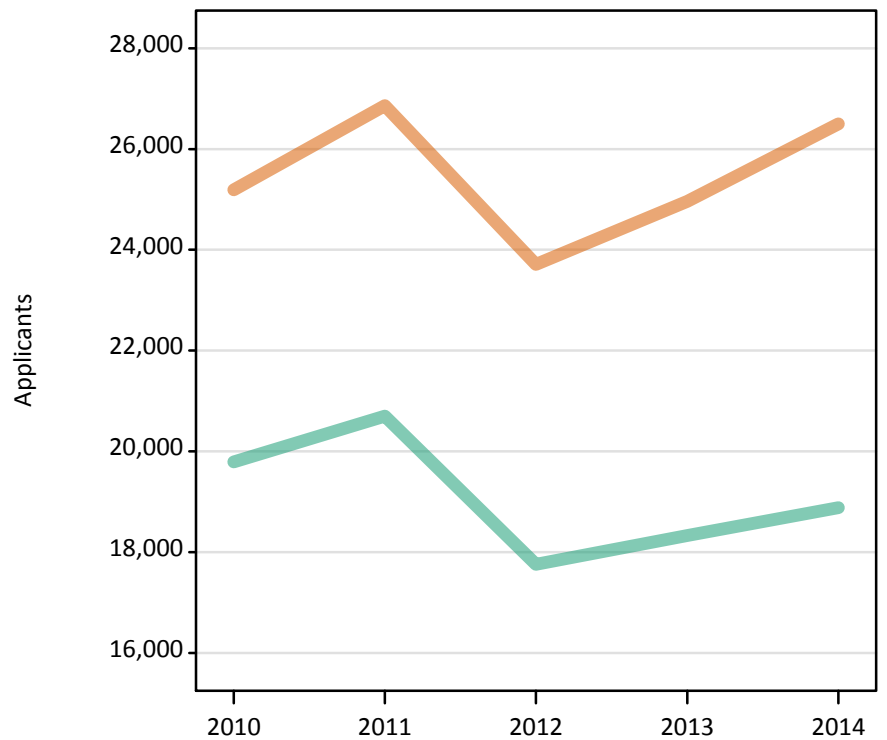
Difference between cycle and 2013 cycle

Men  
Women



### I.2.26 Applicants by sex : EU (excluding UK)

Men  
Women



### I.2.27 Applicants by age and sex : EU (excluding UK)

Age group and sex of applicant		2010	2011	2012	2013	2014
Under 18	Women	1,860	1,920	1,880	1,910	2,180
	Men	1,030	1,160	1,070	1,200	1,270
18	Women	7,780	8,350	7,880	8,340	8,890
	Men	5,180	5,400	5,360	5,530	5,980
19	Women	6,880	7,760	6,960	7,390	7,920
	Men	5,310	6,150	5,220	5,500	5,490
20-24	Women	7,220	7,410	5,860	6,200	6,360
	Men	6,770	6,620	5,070	5,100	5,250
25-29	Women	1,030	1,020	770	770	790
	Men	1,030	970	680	650	600
30-34	Women	240	250	210	200	190
	Men	270	240	200	190	170
35 and over	Women	180	160	160	140	180
	Men	190	160	150	160	140
All ages	Women	25,190	26,860	23,710	24,960	26,500
	Men	19,790	20,700	17,760	18,330	18,880

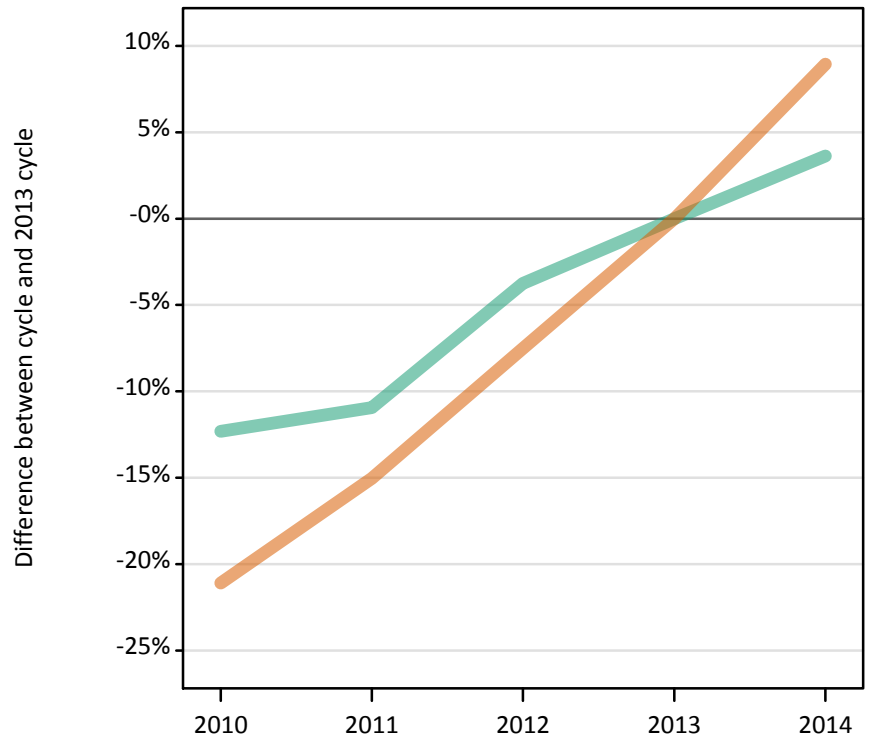
### I.2.28 Applicants by age and sex : EU (excluding UK)

Difference between cycle and 2013 cycle

Age group and sex of applicant		2010	2011	2012	2013	2014
Under 18	Women	-3%	0%	-2%	0%	14%
	Men	-14%	-4%	-11%	0%	6%
18	Women	-7%	0%	-6%	0%	6%
	Men	-6%	-2%	-3%	0%	8%
19	Women	-7%	5%	-6%	0%	7%
	Men	-3%	12%	-5%	0%	-0%
20-24	Women	17%	20%	-6%	0%	3%
	Men	33%	30%	-1%	0%	3%
25-29	Women	34%	31%	-1%	0%	2%
	Men	59%	50%	5%	0%	-8%
30-34	Women	19%	22%	1%	0%	-8%
	Men	43%	24%	7%	0%	-12%
35 and over	Women	26%	16%	16%	0%	26%
	Men	17%	-1%	-6%	0%	-16%
All ages	Women	1%	8%	-5%	0%	6%
	Men	8%	13%	-3%	0%	3%

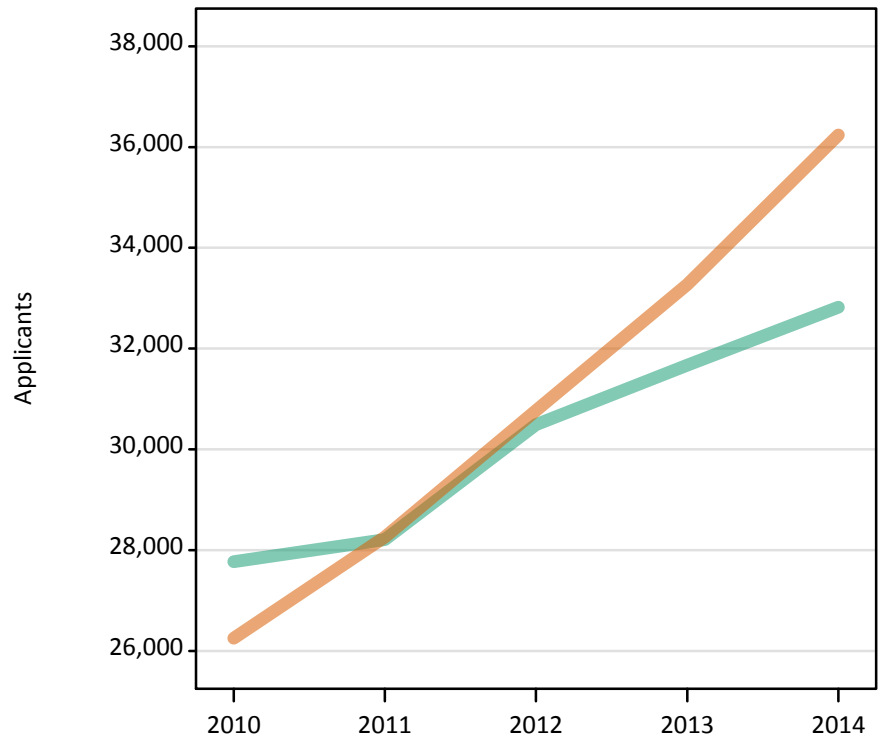
**I.2.29 Applicants by sex : Not EU**  
Difference between cycle and 2013 cycle

Men  
Women



**I.2.30 Applicants by sex : Not EU**

Men  
Women



### I.2.31 Applicants by age and sex : Not EU

Age group and sex of applicant		2010	2011	2012	2013	2014
Under 18	Women	1,810	1,960	2,340	2,720	3,150
	Men	1,720	1,800	2,260	2,570	2,820
18	Women	7,710	8,670	9,830	11,320	12,350
	Men	7,280	7,770	8,810	9,770	10,500
19	Women	6,870	7,510	8,140	8,430	9,380
	Men	6,600	6,830	7,220	7,400	7,870
20-24	Women	8,110	8,450	8,900	9,240	9,790
	Men	9,550	9,580	10,010	9,930	9,740
25-29	Women	1,090	1,060	970	1,000	1,020
	Men	1,680	1,440	1,390	1,310	1,190
30-34	Women	370	360	340	320	310
	Men	580	490	470	430	410
35 and over	Women	300	260	250	230	240
	Men	370	300	330	270	280
All ages	Women	26,250	28,260	30,770	33,270	36,240
	Men	27,770	28,210	30,490	31,670	32,820

### I.2.32 Applicants by age and sex : Not EU

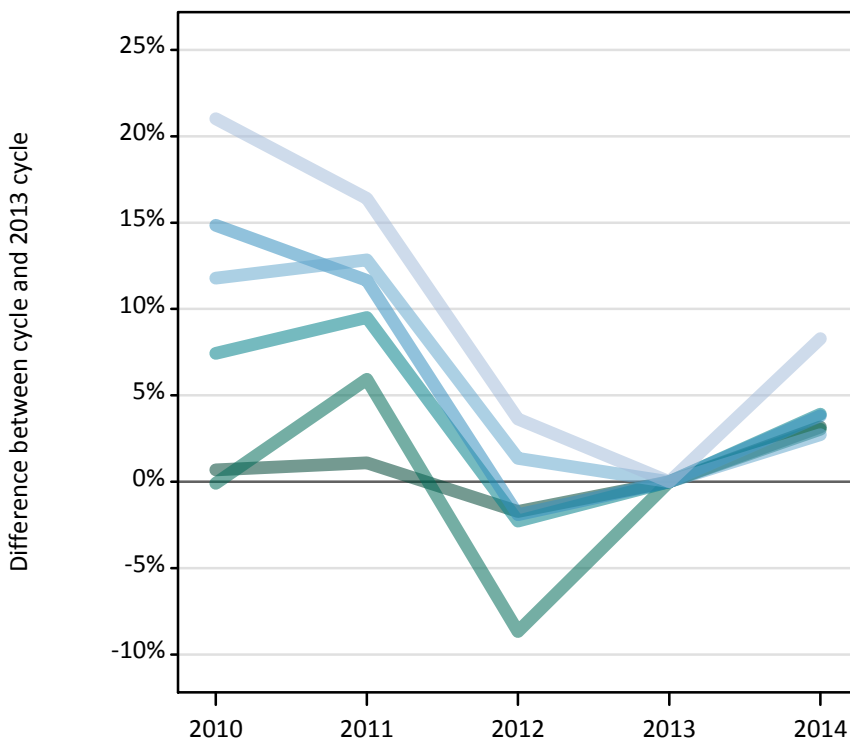
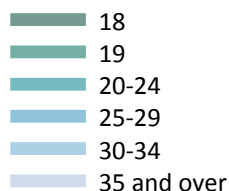
Difference between cycle and 2013 cycle

Age group and sex of applicant		2010	2011	2012	2013	2014
Under 18	Women	-34%	-28%	-14%	0%	16%
	Men	-33%	-30%	-12%	0%	10%
18	Women	-32%	-23%	-13%	0%	9%
	Men	-26%	-20%	-10%	0%	7%
19	Women	-19%	-11%	-3%	0%	11%
	Men	-11%	-8%	-2%	0%	6%
20-24	Women	-12%	-9%	-4%	0%	6%
	Men	-4%	-4%	1%	0%	-2%
25-29	Women	10%	6%	-2%	0%	2%
	Men	28%	10%	6%	0%	-9%
30-34	Women	14%	11%	4%	0%	-4%
	Men	35%	15%	10%	0%	-4%
35 and over	Women	29%	14%	9%	0%	5%
	Men	36%	10%	20%	0%	2%
All ages	Women	-21%	-15%	-8%	0%	9%
	Men	-12%	-11%	-4%	0%	4%



### I.2.33 Applicants by domicile and age : All domiciles

Difference between cycle and 2013 cycle



### I.2.34 Applicants by domicile and age : All domiciles

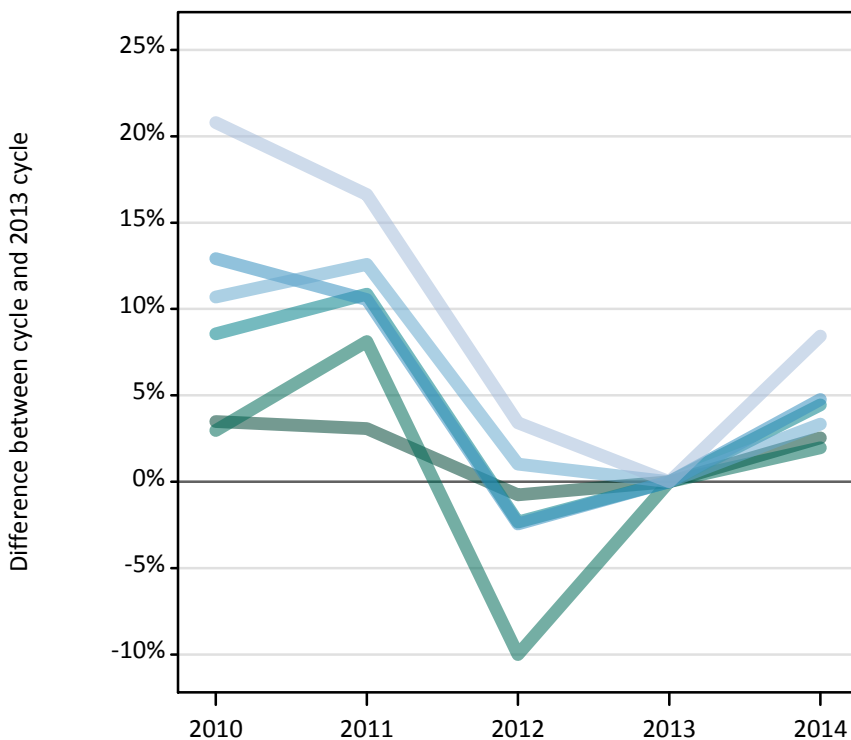
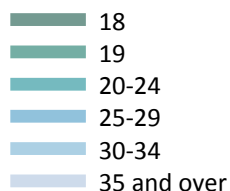
Domicile and age group		2010	2011	2012	2013	2014
All domiciles	Under 18	8,970	9,100	9,380	10,090	11,140
	18	296,390	297,570	289,300	294,360	303,670
	19	128,070	135,790	117,070	128,180	132,080
	20-24	136,280	138,890	123,960	126,840	131,800
	25-29	37,460	36,420	32,000	32,620	33,870
	30-34	19,720	19,900	17,880	17,640	18,120
	35 and over	31,680	30,470	27,130	26,180	28,350

### I.2.35 Applicants by domicile and age : All domiciles

Difference between cycle and 2013 cycle

Domicile and age group		2010	2011	2012	2013	2014
All domiciles	Under 18	-11%	-10%	-7%	0%	10%
	18	1%	1%	-2%	0%	3%
	19	-0%	6%	-9%	0%	3%
	20-24	7%	9%	-2%	0%	4%
	25-29	15%	12%	-2%	0%	4%
	30-34	12%	13%	1%	0%	3%
	35 and over	21%	16%	4%	0%	8%

**I.2.36 Applicants by domicile and age : UK**  
Difference between cycle and 2013 cycle



**I.2.37 Applicants by domicile and age : UK**

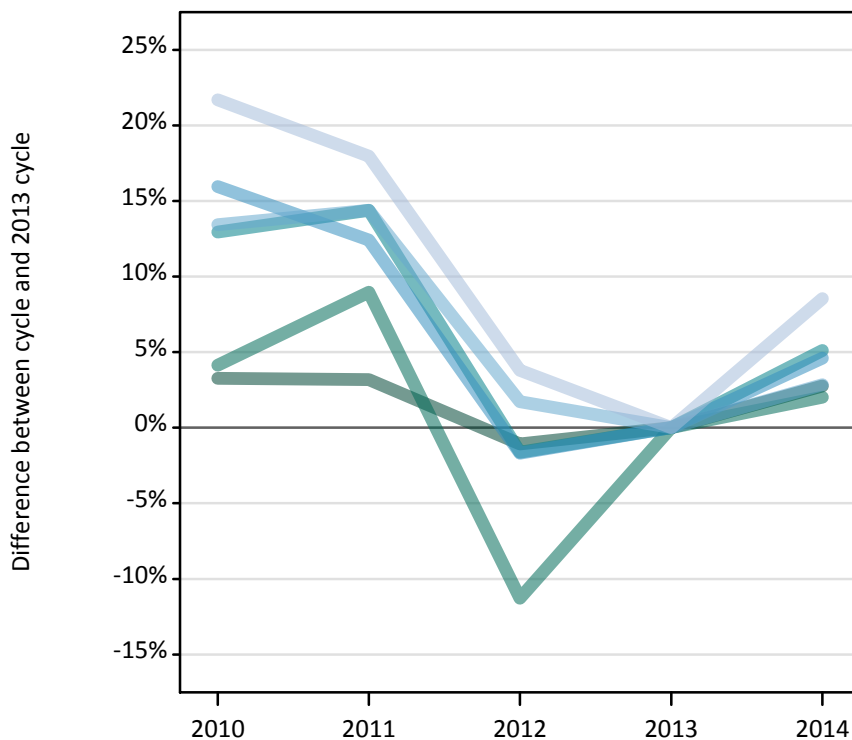
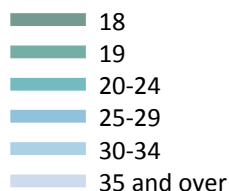
Domicile and age group		2010	2011	2012	2013	2014
UK	Under 18	2,560	2,260	1,830	1,680	1,710
	18	268,440	267,390	257,420	259,390	265,960
	19	102,410	107,540	89,520	99,470	101,420
	20-24	104,630	106,830	94,130	96,370	100,660
	25-29	32,630	31,940	28,190	28,900	30,270
	30-34	18,260	18,570	16,660	16,490	17,040
	35 and over	30,640	29,590	26,230	25,370	27,510

**I.2.38 Applicants by domicile and age : UK**  
Difference between cycle and 2013 cycle

Domicile and age group		2010	2011	2012	2013	2014
UK	Under 18	52%	34%	8%	0%	2%
	18	3%	3%	-1%	0%	3%
	19	3%	8%	-10%	0%	2%
	20-24	9%	11%	-2%	0%	4%
	25-29	13%	11%	-2%	0%	5%
	30-34	11%	13%	1%	0%	3%
	35 and over	21%	17%	3%	0%	8%

### I.2.39 Applicants by domicile and age : England

Difference between cycle and 2013 cycle



### I.2.40 Applicants by domicile and age : England

Domicile and age group		2010	2011	2012	2013	2014
England	Under 18	1,460	1,230	940	910	970
	18	224,650	224,440	215,180	217,540	223,560
	19	90,310	94,500	76,940	86,730	88,470
	20-24	87,670	88,790	76,360	77,620	81,580
	25-29	27,130	26,300	23,000	23,390	24,470
	30-34	15,630	15,760	14,020	13,780	14,170
	35 and over	26,560	25,750	22,660	21,830	23,690

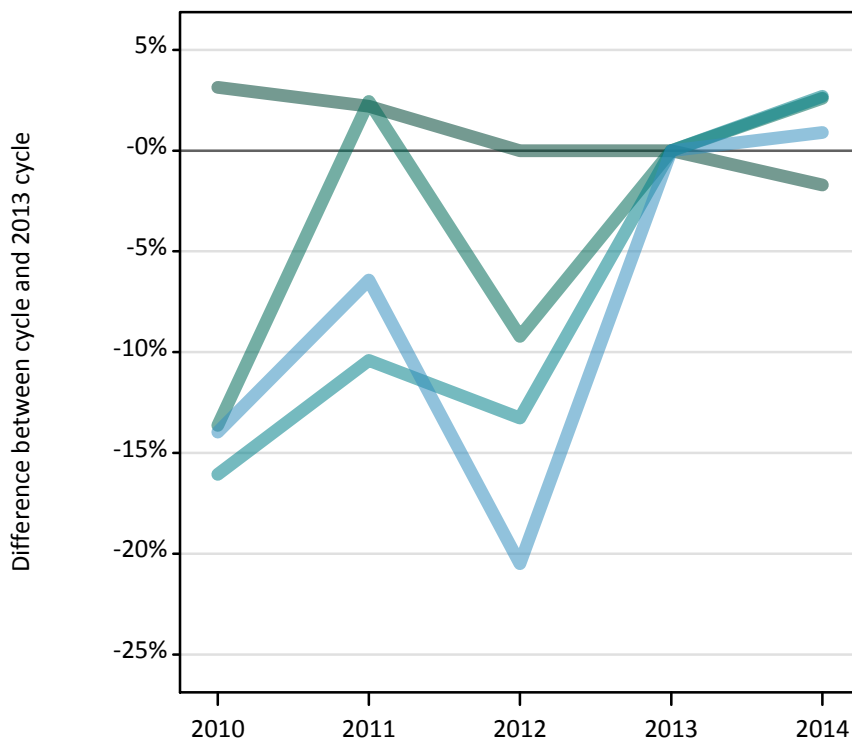
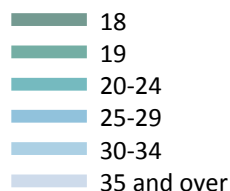
### I.2.41 Applicants by domicile and age : England

Difference between cycle and 2013 cycle

Domicile and age group		2010	2011	2012	2013	2014
England	Under 18	60%	35%	3%	0%	7%
	18	3%	3%	-1%	0%	3%
	19	4%	9%	-11%	0%	2%
	20-24	13%	14%	-2%	0%	5%
	25-29	16%	12%	-2%	0%	5%
	30-34	13%	14%	2%	0%	3%
	35 and over	22%	18%	4%	0%	9%

### I.2.42 Applicants by domicile and age : Northern Ireland

Difference between cycle and 2013 cycle



### I.2.43 Applicants by domicile and age : Northern Ireland

Domicile and age group		2010	2011	2012	2013	2014
Northern Ireland	Under 18	60	50	50	40	30
	18	12,070	11,960	11,700	11,700	11,500
	19	2,620	3,110	2,760	3,040	3,120
	20-24	3,200	3,420	3,310	3,820	3,920
	25-29	760	830	710	890	900
	30-34	280	290	290	370	390
	35 and over	410	380	340	440	450

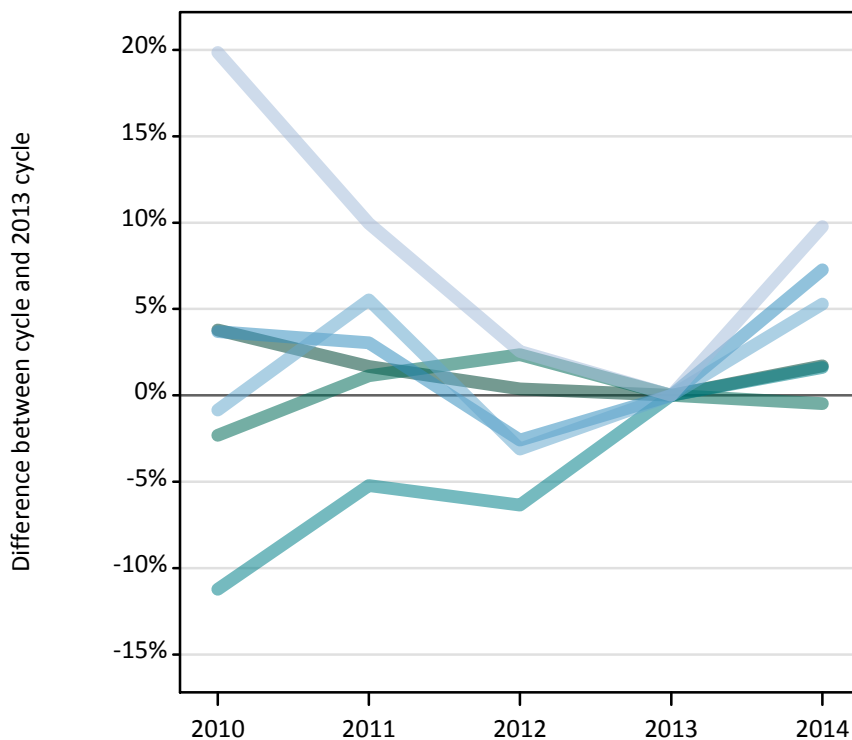
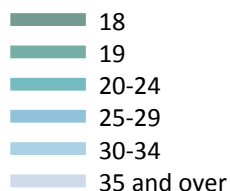
### I.2.44 Applicants by domicile and age : Northern Ireland

Difference between cycle and 2013 cycle

Domicile and age group		2010	2011	2012	2013	2014
Northern Ireland	Under 18	54%	30%	35%	0%	-24%
	18	3%	2%	-0%	0%	-2%
	19	-14%	2%	-9%	0%	3%
	20-24	-16%	-10%	-13%	0%	3%
	25-29	-14%	-6%	-20%	0%	1%
	30-34	-25%	-22%	-23%	0%	4%
	35 and over	-6%	-15%	-24%	0%	2%

### I.2.45 Applicants by domicile and age : Scotland

Difference between cycle and 2013 cycle



### I.2.46 Applicants by domicile and age : Scotland

Domicile and age group		2010	2011	2012	2013	2014
Scotland	Under 18	990	930	810	690	680
	18	19,760	19,350	19,100	19,030	19,360
	19	5,430	5,620	5,690	5,550	5,530
	20-24	9,480	10,120	10,000	10,680	10,850
	25-29	3,310	3,290	3,110	3,200	3,430
	30-34	1,630	1,740	1,590	1,650	1,730
	35 and over	2,550	2,340	2,180	2,130	2,340

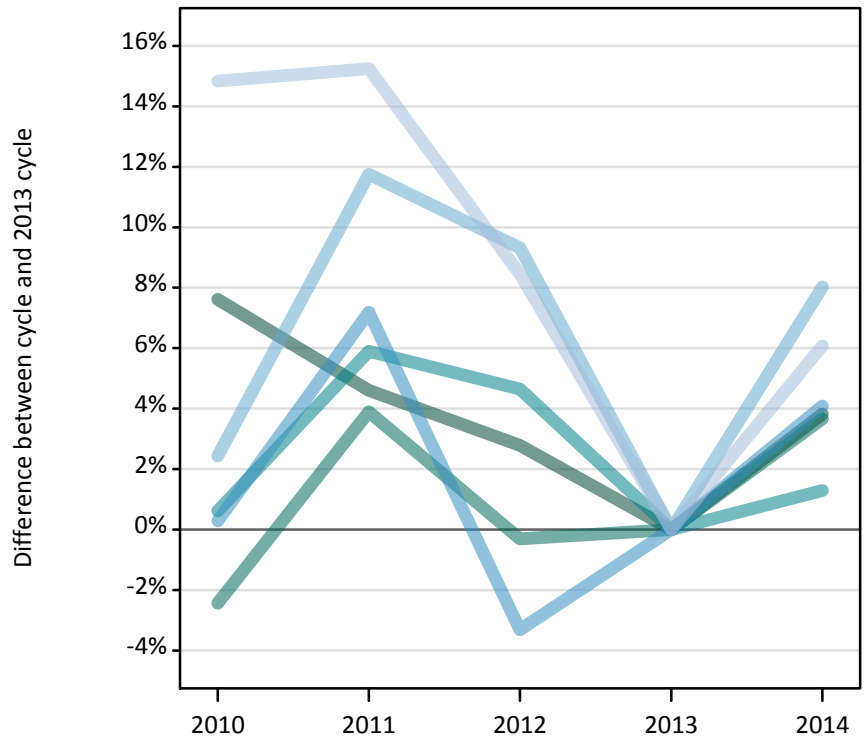
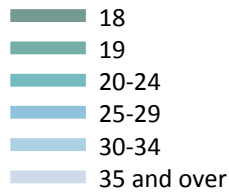
### I.2.47 Applicants by domicile and age : Scotland

Difference between cycle and 2013 cycle

Domicile and age group		2010	2011	2012	2013	2014
Scotland	Under 18	43%	35%	18%	0%	-1%
	18	4%	2%	0%	0%	2%
	19	-2%	1%	2%	0%	-0%
	20-24	-11%	-5%	-6%	0%	2%
	25-29	4%	3%	-3%	0%	7%
	30-34	-1%	6%	-3%	0%	5%
	35 and over	20%	10%	3%	0%	10%

### I.2.48 Applicants by domicile and age : Wales

Difference between cycle and 2013 cycle



### I.2.49 Applicants by domicile and age : Wales

Domicile and age group		2010	2011	2012	2013	2014
Wales	Under 18	50	50	30	50	30
	18	11,970	11,630	11,430	11,120	11,540
	19	4,050	4,320	4,140	4,150	4,310
	20-24	4,280	4,510	4,460	4,260	4,310
	25-29	1,420	1,520	1,370	1,420	1,480
	30-34	720	780	760	700	750
	35 and over	1,120	1,120	1,050	970	1,030

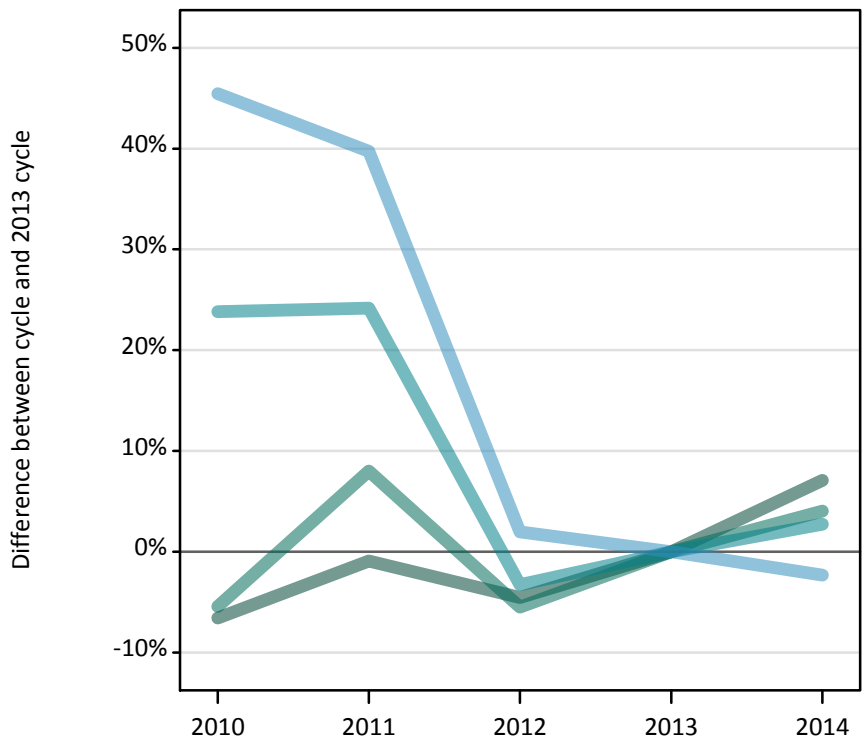
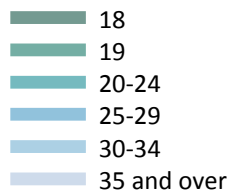
### I.2.50 Applicants by domicile and age : Wales

Difference between cycle and 2013 cycle

Domicile and age group		2010	2011	2012	2013	2014
Wales	Under 18	20%	13%	-38%	0%	-33%
	18	8%	5%	3%	0%	4%
	19	-2%	4%	-0%	0%	4%
	20-24	1%	6%	5%	0%	1%
	25-29	0%	7%	-3%	0%	4%
	30-34	2%	12%	9%	0%	8%
	35 and over	15%	15%	8%	0%	6%

### I.2.51 Applicants by domicile and age : EU (excluding UK)

Difference between cycle and 2013 cycle



### I.2.52 Applicants by domicile and age : EU (excluding UK)

Domicile and age group		2010	2011	2012	2013	2014
EU (excluding UK)	Under 18	2,890	3,080	2,950	3,120	3,460
	18	12,960	13,750	13,250	13,880	14,860
	19	12,190	13,920	12,180	12,890	13,410
	20-24	13,990	14,030	10,930	11,300	11,610
	25-29	2,060	1,980	1,450	1,420	1,390
	30-34	510	480	410	390	360
	35 and over	370	320	320	300	310

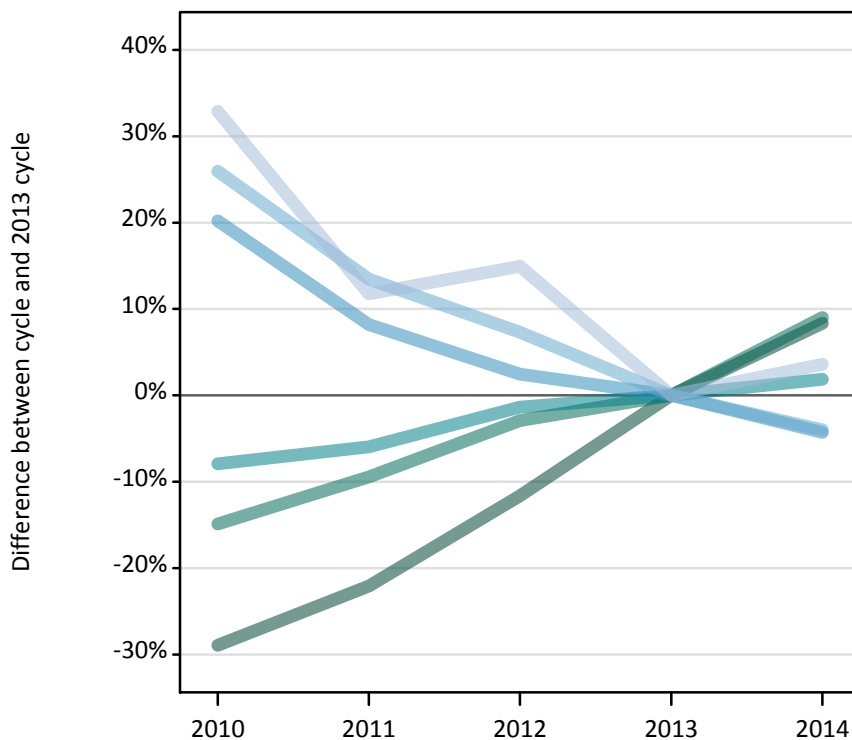
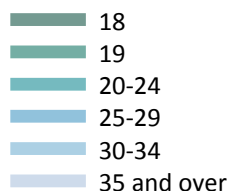
### I.2.53 Applicants by domicile and age : EU (excluding UK)

Difference between cycle and 2013 cycle

Domicile and age group		2010	2011	2012	2013	2014
EU (excluding UK)	Under 18	-7%	-1%	-5%	0%	11%
	18	-7%	-1%	-5%	0%	7%
	19	-5%	8%	-5%	0%	4%
	20-24	24%	24%	-3%	0%	3%
	25-29	45%	40%	2%	0%	-2%
	30-34	30%	23%	4%	0%	-10%
	35 and over	21%	7%	5%	0%	3%

### I.2.54 Applicants by domicile and age : Not EU

Difference between cycle and 2013 cycle



### I.2.55 Applicants by domicile and age : Not EU

Domicile and age group		2010	2011	2012	2013	2014
Not EU	Under 18	3,520	3,760	4,600	5,290	5,970
	18	14,980	16,430	18,630	21,090	22,850
	19	13,470	14,340	15,360	15,830	17,260
	20-24	17,660	18,030	18,910	19,170	19,530
	25-29	2,770	2,500	2,370	2,310	2,210
	30-34	950	850	810	750	720
	35 and over	670	560	580	500	520

### I.2.56 Applicants by domicile and age : Not EU

Difference between cycle and 2013 cycle

Domicile and age group		2010	2011	2012	2013	2014
Not EU	Under 18	-33%	-29%	-13%	0%	13%
	18	-29%	-22%	-12%	0%	8%
	19	-15%	-9%	-3%	0%	9%
	20-24	-8%	-6%	-1%	0%	2%
	25-29	20%	8%	2%	0%	-4%
	30-34	26%	13%	7%	0%	-4%
	35 and over	33%	12%	15%	0%	4%



## I.2.57 Technical notes and definitions

Applicants have been able to submit applications for all 2014 courses since early September.

Counts of the number of applicants reported have been rounded to the nearest 10 applicants, this may result in instances where totals do not equal the sum of the components. Proportional changes have been rounded to the nearest whole percentage point.

The Channel Islands and the Isle of Man are assigned as 'Not EU'. The previous June statistical release assigned the Channel Islands and Isle of Man in the 'UK' therefore the figures for earlier cycles may not match the previous June statistical release.

### Age

This statistical release uses country-specific age definitions which align with the cut off points for school/college cohorts within the different administrations of the UK. For England and Wales ages are defined on the 31 August, for Northern Ireland on the 1 July and for Scotland on the 28 February the following year. Defining ages in this way matches the assignment of children to school cohorts. For applicants outside of the UK the cohort cut off for England and Wales has been used.

### Applicant

A person who has made an application in the UCAS system during the cycle reported, this includes those who submit applications for deferred entry.

### Application

An application to a course at an institution made by an applicant. Applicants may make up to five applications.

### Country of institution

The UK country of the institution applied to.

### Domicile

Declared area of permanent residence. The Channel Islands and the Isle of Man have been assigned as 'Not EU'.

### First time applicant

An applicant that did not apply to the UCAS scheme in the previous cycle.

### Reapplicant

An applicant that applied to the UCAS scheme in the previous cycle.

### Subject group

The JACS3 classification used to classify courses into subject groups.

### Tariff group of institution

Institutions are grouped as higher, medium or lower tariff based on their average levels of attainment of their accepted applicants (summarised through UCAS Tariff points) in recent cycles. Each group of institutions accounted for around a third of all UK 18 year old acceptances in recent cycles.