

Applicants by sex and age at the 24 March deadline

F.2.1 Applicants by sex : All domiciles

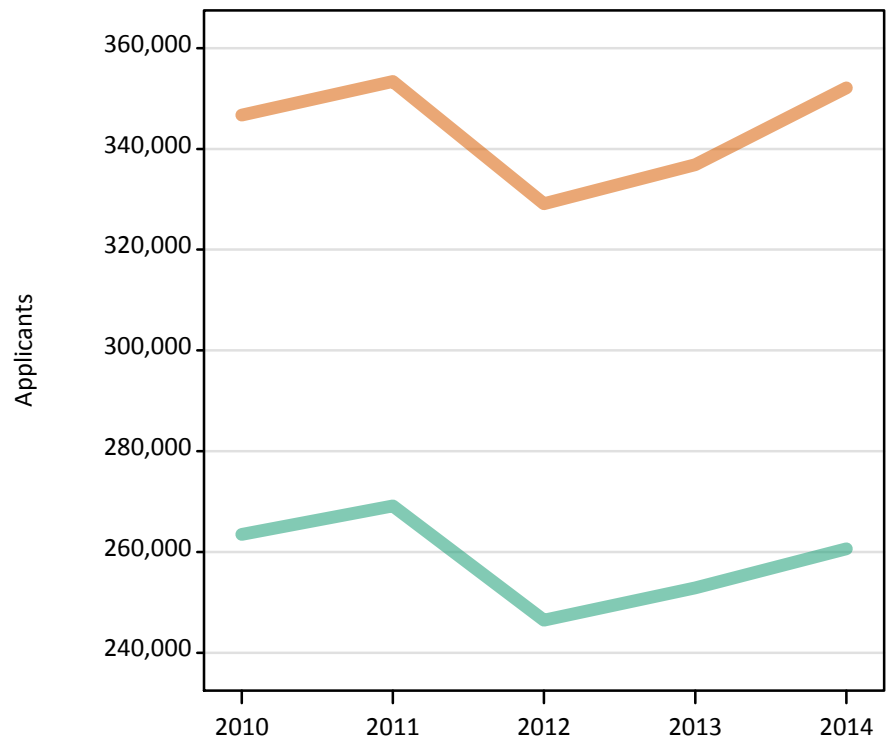
Difference between cycle and 2013 cycle

Men
Women



F.2.2 Applicants by sex : All domiciles

Men
Women



F.2.3 Applicants by age and sex : All domiciles

Age group and sex of applicant		2010	2011	2012	2013	2014
Under 18	Women	4,780	4,790	4,870	5,120	5,850
	Men	3,260	3,420	3,640	3,960	4,290
18	Women	162,420	163,120	159,800	162,050	167,340
	Men	129,710	129,880	125,100	127,160	131,380
19	Women	65,420	69,740	60,200	65,510	68,360
	Men	55,350	58,960	50,220	54,870	55,980
20-24	Women	64,890	66,580	60,130	61,100	64,810
	Men	51,370	53,330	46,930	47,120	48,450
25-29	Women	19,780	19,850	17,850	17,980	18,940
	Men	11,230	10,930	9,390	9,410	9,600
30-34	Women	11,020	11,370	10,440	10,230	10,580
	Men	5,220	5,410	4,650	4,350	4,440
35 and over	Women	18,430	17,950	15,860	14,880	16,220
	Men	7,360	7,240	6,550	6,000	6,520
All ages	Women	346,730	353,410	329,140	336,870	352,100
	Men	263,500	269,170	246,480	252,870	260,650

F.2.4 Applicants by age and sex : All domiciles

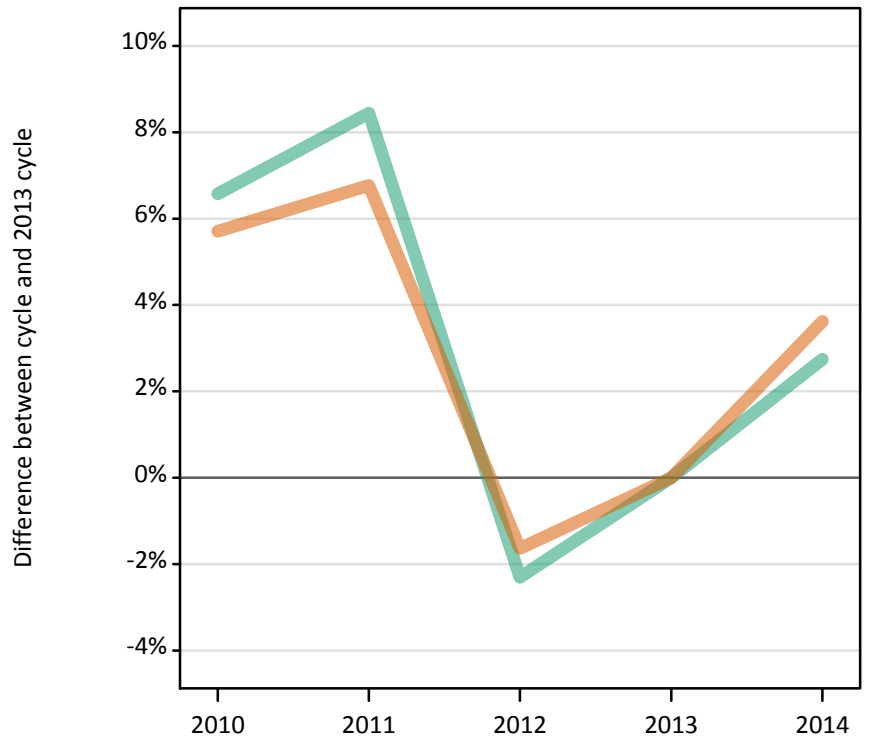
Difference between cycle and 2013 cycle

Age group and sex of applicant		2010	2011	2012	2013	2014
Under 18	Women	-7%	-6%	-5%	0%	14%
	Men	-18%	-14%	-8%	0%	8%
18	Women	0%	1%	-1%	0%	3%
	Men	2%	2%	-2%	0%	3%
19	Women	-0%	6%	-8%	0%	4%
	Men	1%	7%	-8%	0%	2%
20-24	Women	6%	9%	-2%	0%	6%
	Men	9%	13%	-0%	0%	3%
25-29	Women	10%	10%	-1%	0%	5%
	Men	19%	16%	-0%	0%	2%
30-34	Women	8%	11%	2%	0%	3%
	Men	20%	24%	7%	0%	2%
35 and over	Women	24%	21%	7%	0%	9%
	Men	23%	21%	9%	0%	9%
All ages	Women	3%	5%	-2%	0%	5%
	Men	4%	6%	-3%	0%	3%

F.2.5 Applicants by sex : UK

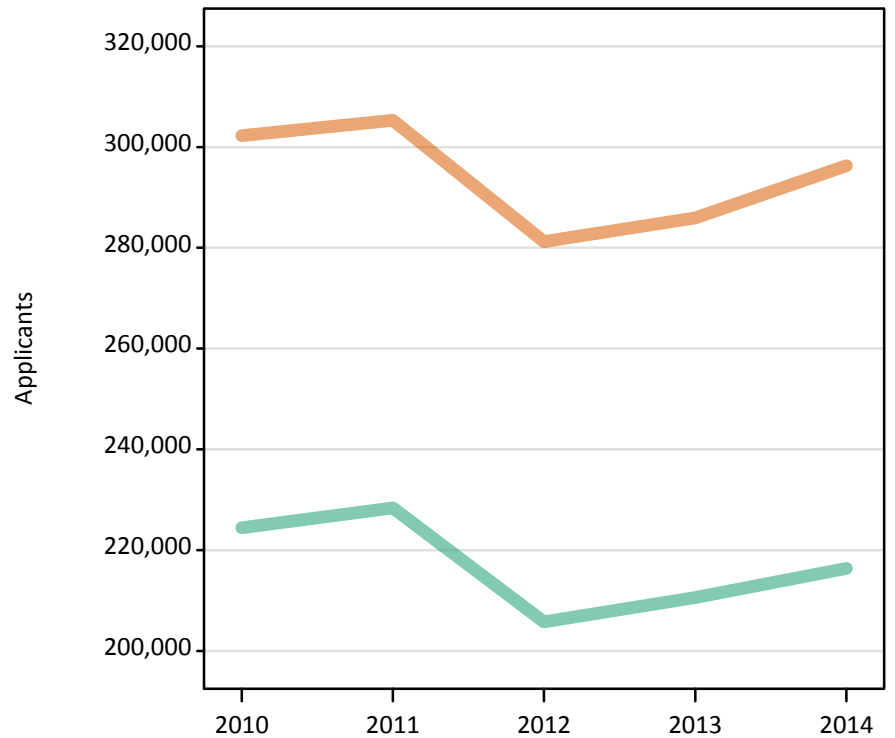
Difference between cycle and 2013 cycle

Men
Women



F.2.6 Applicants by sex : UK

Men
Women



F.2.7 Applicants by age and sex : UK

Age group and sex of applicant		2010	2011	2012	2013	2014
Under 18	Women	1,450	1,270	1,020	900	940
	Men	900	850	730	680	650
18	Women	147,990	147,270	143,230	143,700	147,350
	Men	118,370	117,860	112,060	113,170	116,220
19	Women	53,190	56,050	46,580	51,220	52,640
	Men	44,940	47,550	39,190	43,480	44,170
20-24	Women	52,900	53,970	48,390	49,040	51,710
	Men	39,350	41,150	35,490	35,670	36,800
25-29	Women	18,110	18,210	16,480	16,610	17,540
	Men	9,350	9,200	7,910	8,010	8,290
30-34	Women	10,550	10,900	10,010	9,850	10,200
	Men	4,610	4,870	4,190	3,910	4,020
35 and over	Women	18,070	17,640	15,540	14,610	15,900
	Men	6,940	6,910	6,200	5,680	6,220
All ages	Women	302,260	305,290	281,260	285,940	296,280
	Men	224,460	228,390	205,760	210,610	216,380

F.2.8 Applicants by age and sex : UK

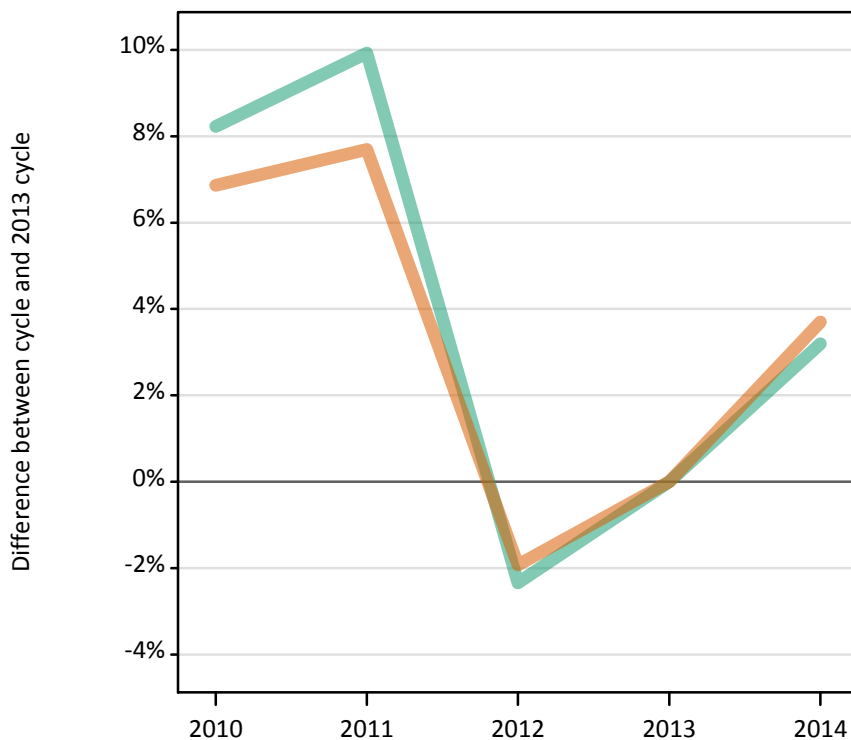
Difference between cycle and 2013 cycle

Age group and sex of applicant		2010	2011	2012	2013	2014
Under 18	Women	62%	41%	13%	0%	5%
	Men	32%	25%	7%	0%	-4%
18	Women	3%	2%	-0%	0%	3%
	Men	5%	4%	-1%	0%	3%
19	Women	4%	9%	-9%	0%	3%
	Men	3%	9%	-10%	0%	2%
20-24	Women	8%	10%	-1%	0%	5%
	Men	10%	15%	-1%	0%	3%
25-29	Women	9%	10%	-1%	0%	6%
	Men	17%	15%	-1%	0%	3%
30-34	Women	7%	11%	2%	0%	4%
	Men	18%	25%	7%	0%	3%
35 and over	Women	24%	21%	6%	0%	9%
	Men	22%	22%	9%	0%	9%
All ages	Women	6%	7%	-2%	0%	4%
	Men	7%	8%	-2%	0%	3%

F.2.9 Applicants by sex : England

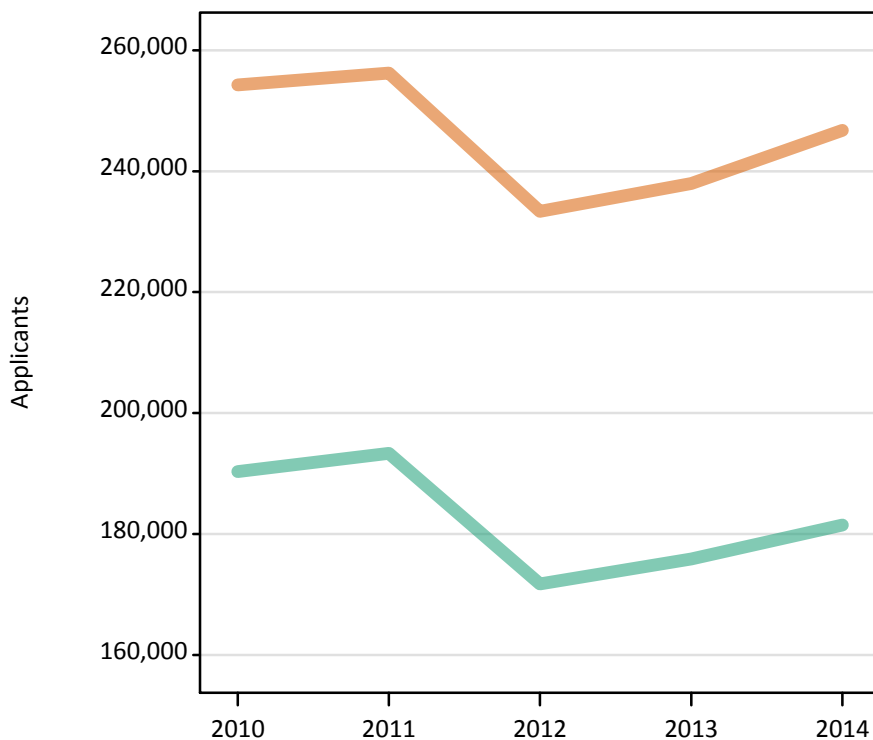
Difference between cycle and 2013 cycle

Men
Women



F.2.10 Applicants by sex : England

Men
Women



F.2.11 Applicants by age and sex : England

Age group and sex of applicant		2010	2011	2012	2013	2014
Under 18	Women	800	670	490	460	500
	Men	510	460	390	380	380
18	Women	123,120	122,990	118,960	119,910	123,130
	Men	99,670	99,390	94,270	95,270	98,240
19	Women	46,690	48,880	39,650	44,240	45,570
	Men	39,970	42,090	33,920	38,170	38,760
20-24	Women	43,990	44,250	38,990	39,200	41,440
	Men	32,900	34,140	28,370	27,990	29,260
25-29	Women	15,110	15,060	13,480	13,470	14,130
	Men	7,520	7,270	6,190	6,210	6,430
30-34	Women	9,040	9,220	8,470	8,230	8,440
	Men	3,840	4,040	3,350	3,100	3,190
35 and over	Women	15,550	15,200	13,320	12,440	13,560
	Men	5,920	5,930	5,270	4,750	5,230
All ages	Women	254,280	256,260	233,360	237,960	246,760
	Men	190,330	193,320	171,750	175,860	181,490

F.2.12 Applicants by age and sex : England

Difference between cycle and 2013 cycle

Age group and sex of applicant		2010	2011	2012	2013	2014
Under 18	Women	74%	45%	7%	0%	10%
	Men	34%	21%	3%	0%	1%
18	Women	3%	3%	-1%	0%	3%
	Men	5%	4%	-1%	0%	3%
19	Women	6%	10%	-10%	0%	3%
	Men	5%	10%	-11%	0%	2%
20-24	Women	12%	13%	-1%	0%	6%
	Men	18%	22%	1%	0%	5%
25-29	Women	12%	12%	0%	0%	5%
	Men	21%	17%	-0%	0%	4%
30-34	Women	10%	12%	3%	0%	3%
	Men	24%	30%	8%	0%	3%
35 and over	Women	25%	22%	7%	0%	9%
	Men	25%	25%	11%	0%	10%
All ages	Women	7%	8%	-2%	0%	4%
	Men	8%	10%	-2%	0%	3%

F.2.13 Applicants by sex : Northern Ireland

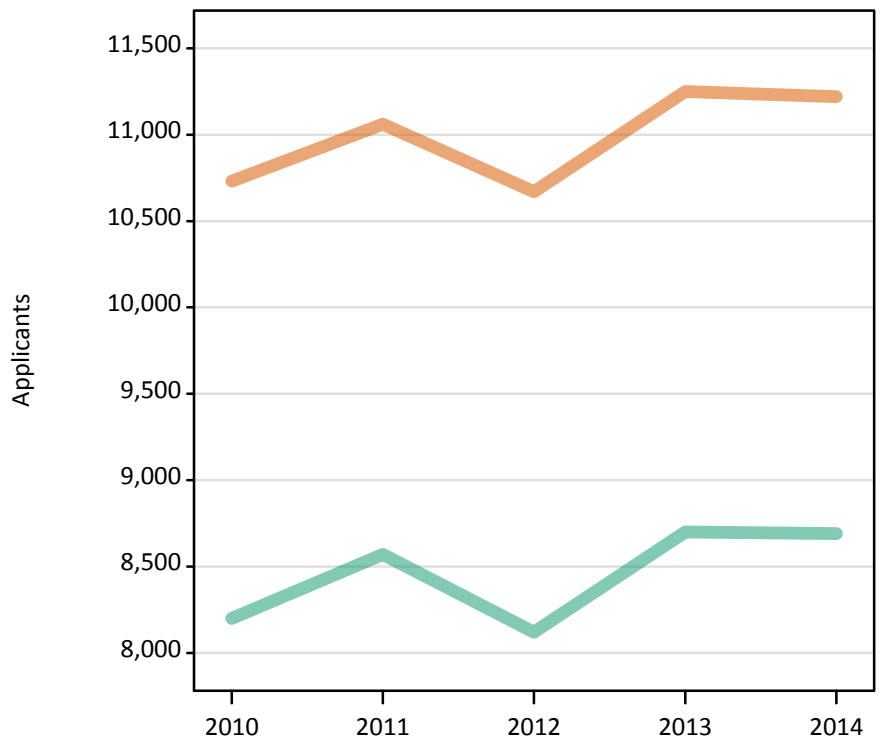
Difference between cycle and 2013 cycle

Men
Women



F.2.14 Applicants by sex : Northern Ireland

Men
Women



F.2.15 Applicants by age and sex : Northern Ireland

Age group and sex of applicant		2010	2011	2012	2013	2014
Under 18	Women	30	30	30	20	20
	Men	20	20	20	20	10
18	Women	6,840	6,740	6,700	6,530	6,400
	Men	5,220	5,200	4,990	5,160	5,080
19	Women	1,360	1,670	1,480	1,650	1,650
	Men	1,130	1,360	1,190	1,300	1,380
20-24	Women	1,610	1,740	1,660	1,950	2,030
	Men	1,350	1,480	1,460	1,710	1,720
25-29	Women	440	460	410	550	570
	Men	280	320	250	290	270
30-34	Women	170	180	170	260	260
	Men	100	100	100	110	110
35 and over	Women	280	260	210	300	300
	Men	110	100	110	120	120
All ages	Women	10,730	11,060	10,670	11,250	11,220
	Men	8,200	8,570	8,120	8,700	8,690

F.2.16 Applicants by age and sex : Northern Ireland

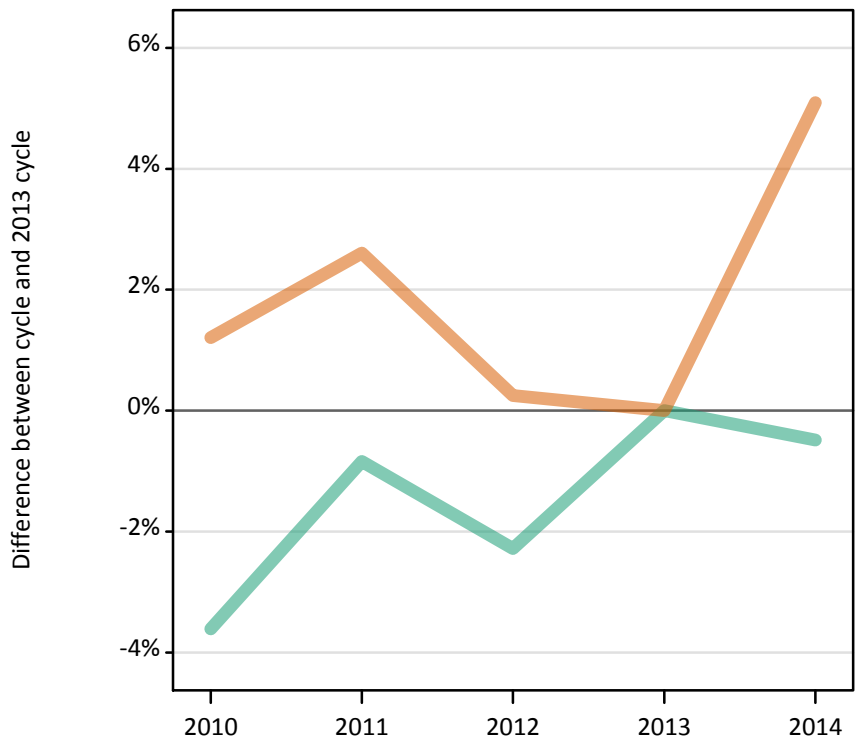
Difference between cycle and 2013 cycle

Age group and sex of applicant		2010	2011	2012	2013	2014
Under 18	Women	83%	39%	89%	0%	-6%
	Men	29%	29%	0%	0%	-35%
18	Women	5%	3%	3%	0%	-2%
	Men	1%	1%	-3%	0%	-1%
19	Women	-18%	1%	-10%	0%	-0%
	Men	-14%	4%	-9%	0%	6%
20-24	Women	-17%	-11%	-15%	0%	4%
	Men	-21%	-14%	-15%	0%	0%
25-29	Women	-19%	-15%	-25%	0%	4%
	Men	-6%	7%	-14%	0%	-8%
30-34	Women	-35%	-32%	-33%	0%	0%
	Men	-8%	-9%	-1%	0%	2%
35 and over	Women	-9%	-15%	-31%	0%	-0%
	Men	-5%	-10%	-5%	0%	0%
All ages	Women	-5%	-2%	-5%	0%	-0%
	Men	-6%	-2%	-7%	0%	-0%

F.2.17 Applicants by sex : Scotland

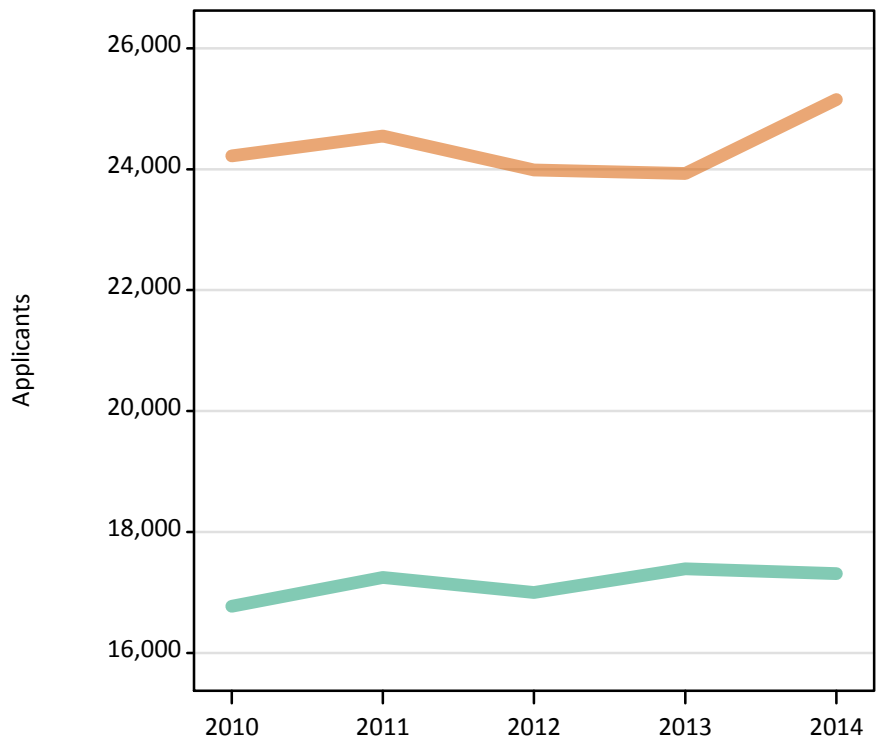
Difference between cycle and 2013 cycle

Men
Women



F.2.18 Applicants by sex : Scotland

Men
Women



F.2.19 Applicants by age and sex : Scotland

Age group and sex of applicant		2010	2011	2012	2013	2014
Under 18	Women	590	550	480	400	410
	Men	350	360	310	270	250
18	Women	11,270	10,970	11,000	10,900	11,290
	Men	8,390	8,310	8,040	8,090	8,010
19	Women	3,000	3,200	3,230	3,120	3,130
	Men	2,180	2,280	2,330	2,290	2,260
20-24	Women	5,140	5,560	5,360	5,660	5,960
	Men	3,540	3,930	4,060	4,450	4,330
25-29	Women	1,730	1,790	1,730	1,700	1,920
	Men	1,160	1,200	1,100	1,140	1,220
30-34	Women	910	1,010	870	900	1,000
	Men	500	550	540	550	570
35 and over	Women	1,570	1,480	1,310	1,260	1,430
	Men	650	620	620	610	660
All ages	Women	24,220	24,550	23,990	23,930	25,150
	Men	16,770	17,250	17,000	17,390	17,310

F.2.20 Applicants by age and sex : Scotland

Difference between cycle and 2013 cycle

Age group and sex of applicant		2010	2011	2012	2013	2014
Under 18	Women	49%	38%	22%	0%	3%
	Men	28%	30%	12%	0%	-8%
18	Women	3%	1%	1%	0%	4%
	Men	4%	3%	-1%	0%	-1%
19	Women	-4%	3%	4%	0%	0%
	Men	-5%	-0%	2%	0%	-1%
20-24	Women	-9%	-2%	-5%	0%	5%
	Men	-20%	-12%	-9%	0%	-3%
25-29	Women	2%	5%	1%	0%	13%
	Men	2%	6%	-4%	0%	7%
30-34	Women	1%	12%	-3%	0%	12%
	Men	-10%	-1%	-2%	0%	3%
35 and over	Women	25%	18%	4%	0%	14%
	Men	7%	2%	2%	0%	8%
All ages	Women	1%	3%	0%	0%	5%
	Men	-4%	-1%	-2%	0%	-0%

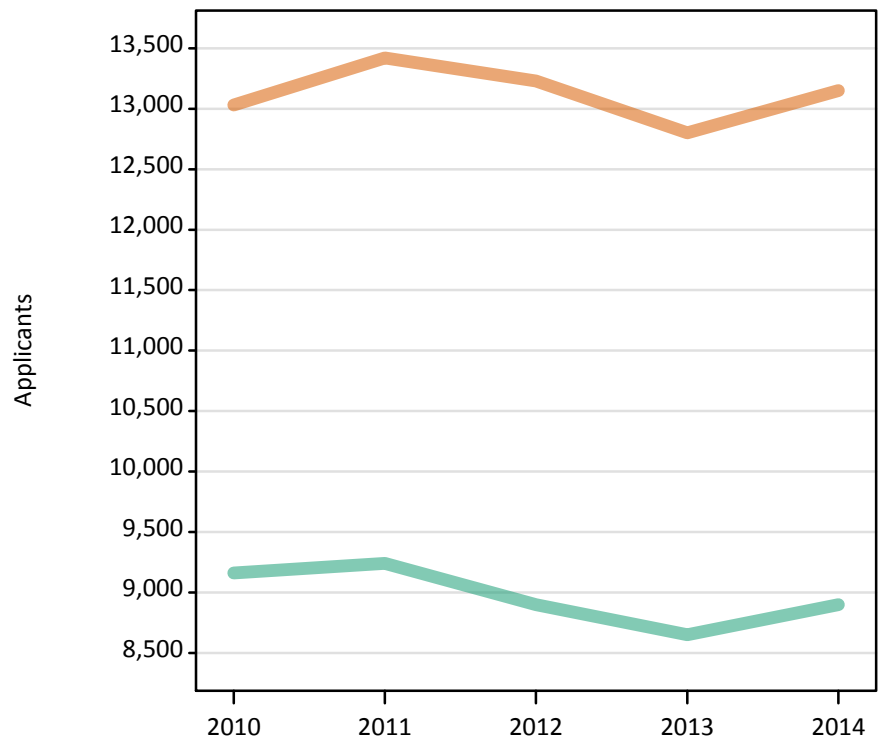
F.2.21 Applicants by sex : Wales Difference between cycle and 2013 cycle

Men
Women



F.2.22 Applicants by sex : Wales

Men
Women



F.2.23 Applicants by age and sex : Wales

Age group and sex of applicant		2010	2011	2012	2013	2014
Under 18	Women	30	30	10	30	20
	Men	20	20	20	10	10
18	Women	6,770	6,570	6,570	6,370	6,520
	Men	5,090	4,960	4,770	4,650	4,880
19	Women	2,140	2,310	2,210	2,210	2,300
	Men	1,660	1,810	1,760	1,720	1,770
20-24	Women	2,160	2,420	2,380	2,240	2,290
	Men	1,570	1,600	1,600	1,520	1,490
25-29	Women	820	910	860	890	920
	Men	390	410	360	370	370
30-34	Women	430	500	490	460	500
	Men	170	190	190	150	150
35 and over	Women	670	700	700	610	610
	Men	260	260	200	210	220
All ages	Women	13,030	13,420	13,230	12,800	13,150
	Men	9,160	9,240	8,900	8,650	8,900

F.2.24 Applicants by age and sex : Wales

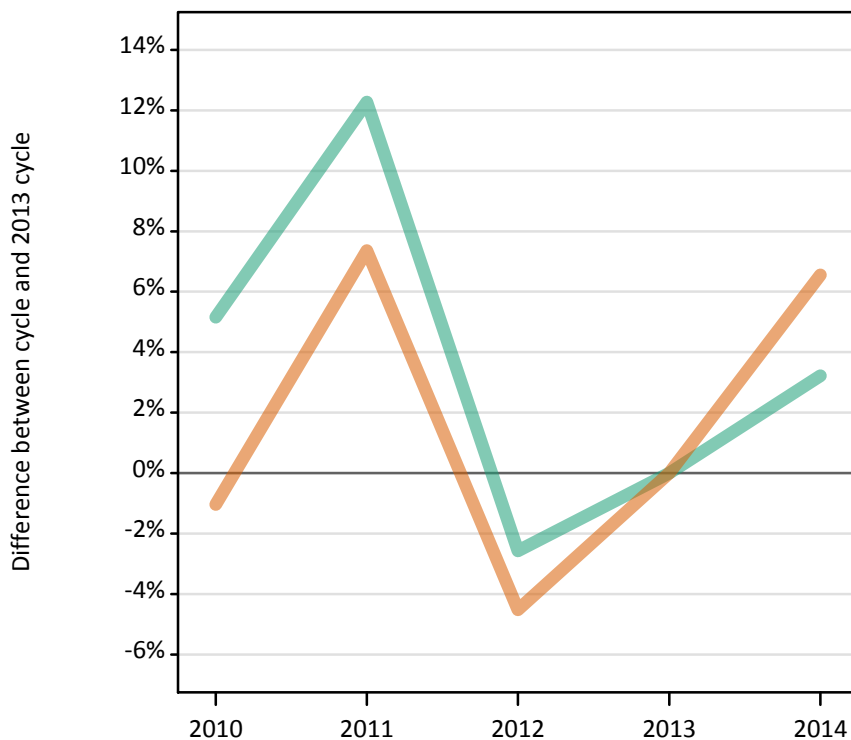
Difference between cycle and 2013 cycle

Age group and sex of applicant		2010	2011	2012	2013	2014
Under 18	Women	20%	16%	-56%	0%	-40%
	Men	38%	31%	15%	0%	0%
18	Women	6%	3%	3%	0%	2%
	Men	9%	7%	2%	0%	5%
19	Women	-3%	5%	0%	0%	4%
	Men	-3%	5%	2%	0%	3%
20-24	Women	-3%	8%	6%	0%	2%
	Men	3%	5%	5%	0%	-2%
25-29	Women	-8%	2%	-3%	0%	3%
	Men	5%	11%	-2%	0%	0%
30-34	Women	-7%	7%	6%	0%	7%
	Men	11%	21%	22%	0%	-1%
35 and over	Women	10%	14%	15%	0%	0%
	Men	23%	21%	-5%	0%	2%
All ages	Women	2%	5%	3%	0%	3%
	Men	6%	7%	3%	0%	3%

F.2.25 Applicants by sex : EU (excluding UK)

Difference between cycle and 2013 cycle

Men
Women



F.2.26 Applicants by sex : EU (excluding UK)

Men
Women



F.2.27 Applicants by age and sex : EU (excluding UK)

Age group and sex of applicant		2010	2011	2012	2013	2014
Under 18	Women	1,770	1,840	1,810	1,850	2,110
	Men	990	1,110	1,020	1,160	1,230
18	Women	7,490	8,050	7,650	8,040	8,620
	Men	4,970	5,170	5,180	5,320	5,760
19	Women	6,420	7,350	6,590	6,990	7,500
	Men	4,910	5,810	4,940	5,150	5,140
20-24	Women	6,100	6,510	5,160	5,420	5,570
	Men	5,600	5,670	4,400	4,370	4,490
25-29	Women	850	850	640	660	660
	Men	820	770	540	500	480
30-34	Women	200	210	180	160	150
	Men	220	210	170	160	130
35 and over	Women	150	130	140	120	150
	Men	150	130	130	140	110
All ages	Women	22,980	24,930	22,170	23,220	24,750
	Men	17,670	18,870	16,370	16,800	17,340

F.2.28 Applicants by age and sex : EU (excluding UK)

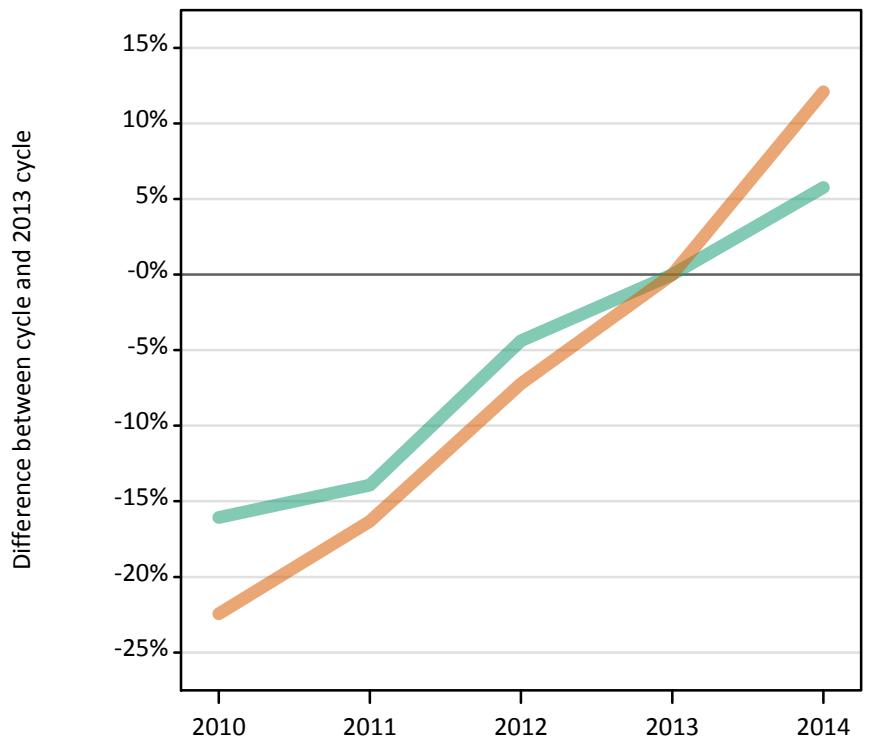
Difference between cycle and 2013 cycle

Age group and sex of applicant		2010	2011	2012	2013	2014
Under 18	Women	-4%	-0%	-2%	0%	14%
	Men	-15%	-4%	-12%	0%	6%
18	Women	-7%	0%	-5%	0%	7%
	Men	-7%	-3%	-3%	0%	8%
19	Women	-8%	5%	-6%	0%	7%
	Men	-5%	13%	-4%	0%	-0%
20-24	Women	13%	20%	-5%	0%	3%
	Men	28%	30%	1%	0%	3%
25-29	Women	30%	29%	-2%	0%	0%
	Men	64%	53%	8%	0%	-4%
30-34	Women	26%	29%	11%	0%	-7%
	Men	36%	29%	4%	0%	-20%
35 and over	Women	27%	14%	20%	0%	27%
	Men	10%	-3%	-7%	0%	-19%
All ages	Women	-1%	7%	-5%	0%	7%
	Men	5%	12%	-3%	0%	3%

F.2.29 Applicants by sex : Not EU

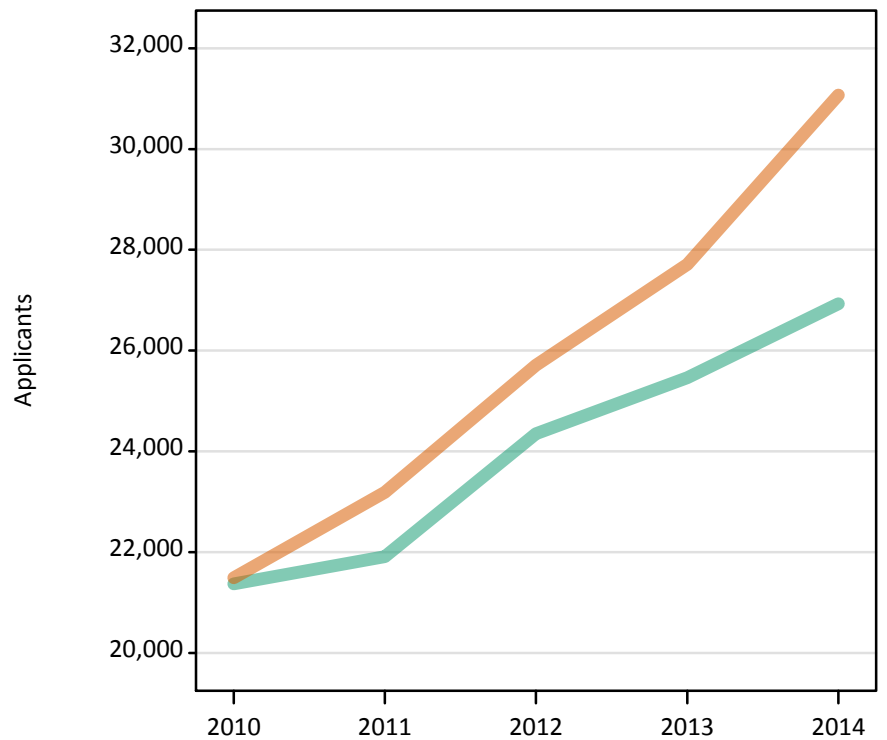
Difference between cycle and 2013 cycle

Men
Women



F.2.30 Applicants by sex : Not EU

Men
Women



F.2.31 Applicants by age and sex : Not EU

Age group and sex of applicant		2010	2011	2012	2013	2014
Under 18	Women	1,550	1,680	2,040	2,370	2,810
	Men	1,380	1,460	1,880	2,120	2,400
18	Women	6,940	7,810	8,920	10,310	11,370
	Men	6,370	6,850	7,850	8,670	9,410
19	Women	5,810	6,340	7,020	7,300	8,220
	Men	5,500	5,600	6,090	6,240	6,660
20-24	Women	5,890	6,110	6,570	6,640	7,530
	Men	6,410	6,510	7,050	7,080	7,160
25-29	Women	820	800	730	710	740
	Men	1,060	970	940	900	820
30-34	Women	270	270	250	220	230
	Men	390	330	300	280	290
35 and over	Women	220	190	180	160	170
	Men	270	200	230	190	190
All ages	Women	21,490	23,190	25,710	27,710	31,070
	Men	21,370	21,910	24,350	25,460	26,930

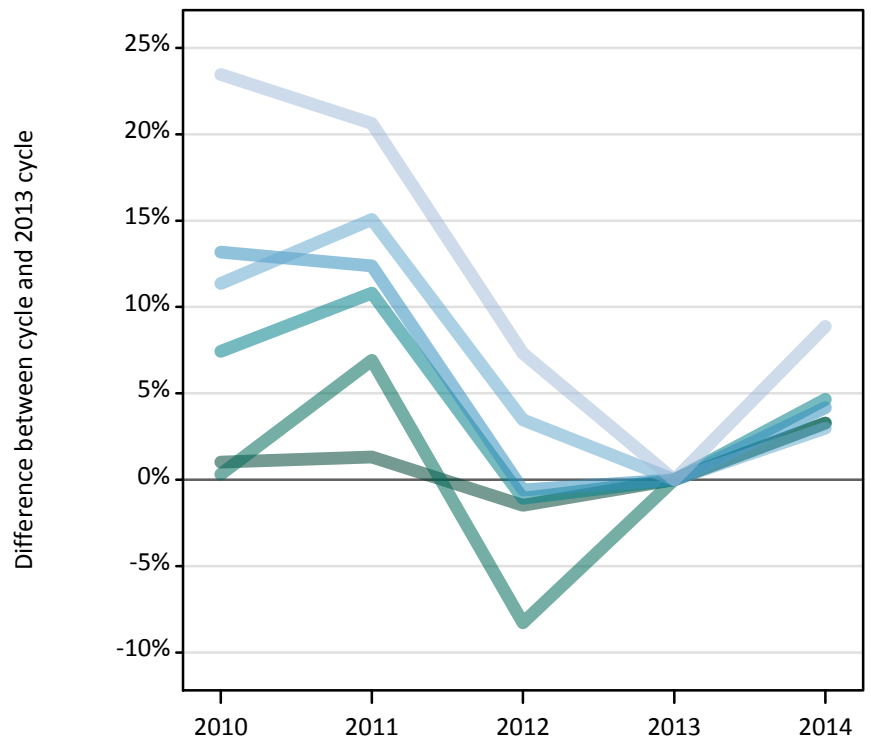
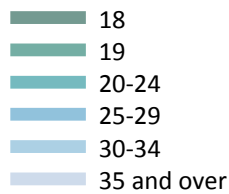
F.2.32 Applicants by age and sex : Not EU

Difference between cycle and 2013 cycle

Age group and sex of applicant		2010	2011	2012	2013	2014
Under 18	Women	-35%	-29%	-14%	0%	18%
	Men	-35%	-31%	-11%	0%	13%
18	Women	-33%	-24%	-14%	0%	10%
	Men	-26%	-21%	-9%	0%	9%
19	Women	-20%	-13%	-4%	0%	13%
	Men	-12%	-10%	-2%	0%	7%
20-24	Women	-11%	-8%	-1%	0%	13%
	Men	-9%	-8%	-0%	0%	1%
25-29	Women	14%	11%	2%	0%	4%
	Men	18%	8%	4%	0%	-8%
30-34	Women	24%	22%	13%	0%	4%
	Men	39%	19%	8%	0%	3%
35 and over	Women	39%	21%	16%	0%	9%
	Men	43%	8%	22%	0%	4%
All ages	Women	-22%	-16%	-7%	0%	12%
	Men	-16%	-14%	-4%	0%	6%

F.2.33 Applicants by domicile and age : All domiciles

Difference between cycle and 2013 cycle



F.2.34 Applicants by domicile and age : All domiciles

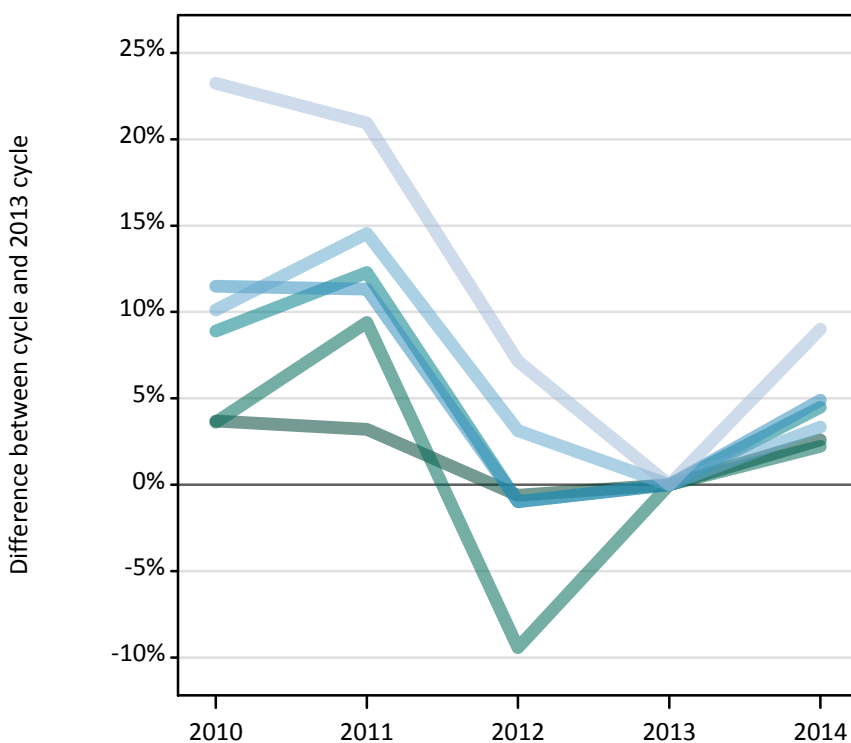
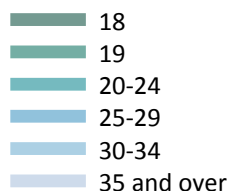
Domicile and age group		2010	2011	2012	2013	2014
All domiciles	Under 18	8,040	8,210	8,500	9,080	10,140
	18	292,130	293,000	284,900	289,210	298,720
	19	120,770	128,700	110,420	120,380	124,340
	20-24	116,260	119,910	107,060	108,220	113,260
	25-29	31,010	30,790	27,240	27,400	28,540
	30-34	16,240	16,780	15,090	14,580	15,020
	35 and over	25,790	25,190	22,410	20,880	22,740

F.2.35 Applicants by domicile and age : All domiciles

Difference between cycle and 2013 cycle

Domicile and age group		2010	2011	2012	2013	2014
All domiciles	Under 18	-11%	-10%	-6%	0%	12%
	18	1%	1%	-1%	0%	3%
	19	0%	7%	-8%	0%	3%
	20-24	7%	11%	-1%	0%	5%
	25-29	13%	12%	-1%	0%	4%
	30-34	11%	15%	3%	0%	3%
	35 and over	23%	21%	7%	0%	9%

F.2.36 Applicants by domicile and age : UK
Difference between cycle and 2013 cycle



F.2.37 Applicants by domicile and age : UK

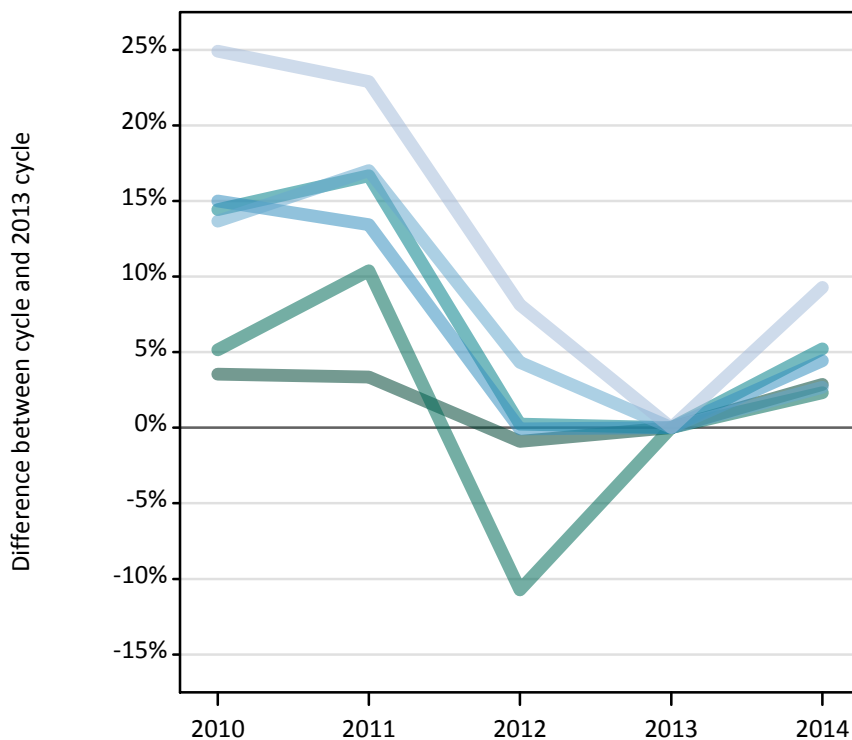
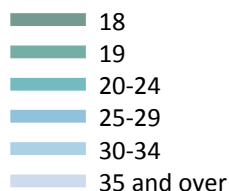
Domicile and age group		2010	2011	2012	2013	2014
UK	Under 18	2,350	2,120	1,750	1,580	1,590
	18	266,370	265,130	255,300	256,870	263,560
	19	98,130	103,600	85,770	94,700	96,820
	20-24	92,250	95,120	83,880	84,710	88,520
	25-29	27,450	27,410	24,390	24,630	25,830
	30-34	15,160	15,770	14,200	13,770	14,230
	35 and over	25,010	24,540	21,740	20,290	22,120

F.2.38 Applicants by domicile and age : UK
Difference between cycle and 2013 cycle

Domicile and age group		2010	2011	2012	2013	2014
UK	Under 18	49%	34%	11%	0%	1%
	18	4%	3%	-1%	0%	3%
	19	4%	9%	-9%	0%	2%
	20-24	9%	12%	-1%	0%	4%
	25-29	11%	11%	-1%	0%	5%
	30-34	10%	15%	3%	0%	3%
	35 and over	23%	21%	7%	0%	9%

F.2.39 Applicants by domicile and age : England

Difference between cycle and 2013 cycle



F.2.40 Applicants by domicile and age : England

Domicile and age group		2010	2011	2012	2013	2014
England	Under 18	1,300	1,120	880	830	880
	18	222,790	222,390	213,220	215,180	221,370
	19	86,650	90,970	73,570	82,410	84,320
	20-24	76,880	78,400	67,360	67,190	70,700
	25-29	22,640	22,330	19,670	19,680	20,560
	30-34	12,880	13,260	11,820	11,330	11,640
	35 and over	21,470	21,120	18,590	17,190	18,790

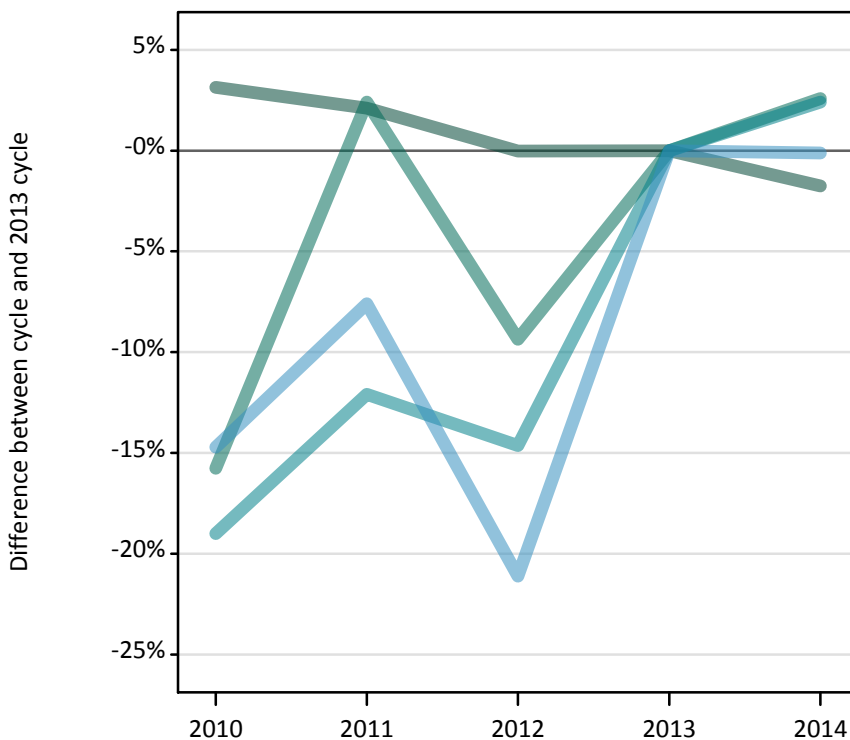
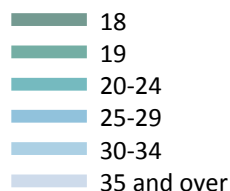
F.2.41 Applicants by domicile and age : England

Difference between cycle and 2013 cycle

Domicile and age group		2010	2011	2012	2013	2014
England	Under 18	56%	34%	5%	0%	6%
	18	4%	3%	-1%	0%	3%
	19	5%	10%	-11%	0%	2%
	20-24	14%	17%	0%	0%	5%
	25-29	15%	13%	-0%	0%	4%
	30-34	14%	17%	4%	0%	3%
	35 and over	25%	23%	8%	0%	9%

F.2.42 Applicants by domicile and age : Northern Ireland

Difference between cycle and 2013 cycle



F.2.43 Applicants by domicile and age : Northern Ireland

Domicile and age group		2010	2011	2012	2013	2014
Northern Ireland	Under 18	60	50	50	40	30
	18	12,060	11,940	11,690	11,690	11,490
	19	2,490	3,020	2,670	2,950	3,030
	20-24	2,960	3,220	3,120	3,660	3,750
	25-29	720	780	670	840	840
	30-34	270	270	280	360	370
	35 and over	380	360	320	420	420

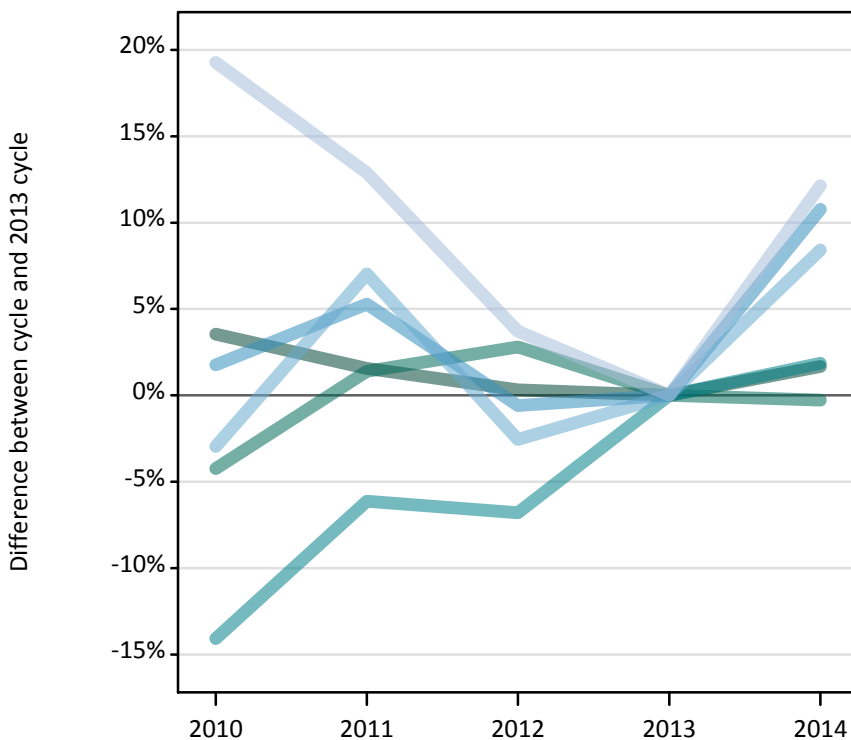
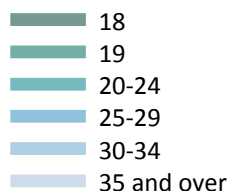
F.2.44 Applicants by domicile and age : Northern Ireland

Difference between cycle and 2013 cycle

Domicile and age group		2010	2011	2012	2013	2014
Northern Ireland	Under 18	57%	34%	46%	0%	-20%
	18	3%	2%	-0%	0%	-2%
	19	-16%	2%	-9%	0%	3%
	20-24	-19%	-12%	-15%	0%	2%
	25-29	-15%	-8%	-21%	0%	-0%
	30-34	-27%	-25%	-24%	0%	1%
	35 and over	-8%	-14%	-24%	0%	-0%

F.2.45 Applicants by domicile and age : Scotland

Difference between cycle and 2013 cycle



F.2.46 Applicants by domicile and age : Scotland

Domicile and age group		2010	2011	2012	2013	2014
Scotland	Under 18	940	900	790	670	660
	18	19,660	19,280	19,040	18,980	19,300
	19	5,180	5,490	5,560	5,410	5,400
	20-24	8,680	9,480	9,420	10,100	10,290
	25-29	2,890	2,990	2,830	2,840	3,150
	30-34	1,410	1,550	1,410	1,450	1,570
	35 and over	2,220	2,100	1,930	1,860	2,090

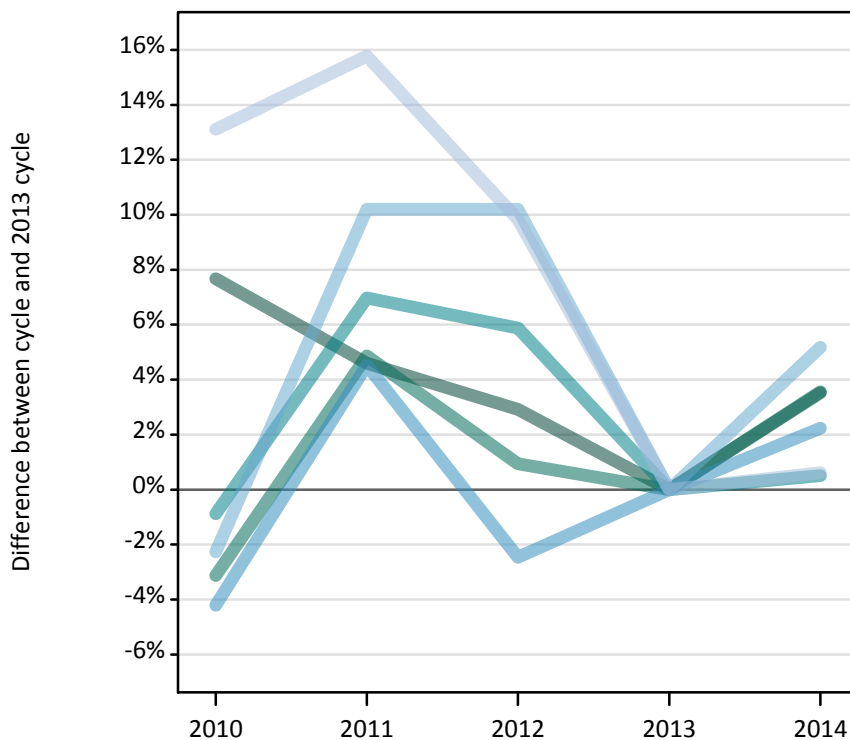
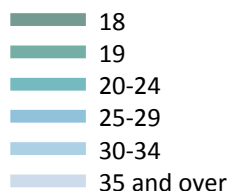
F.2.47 Applicants by domicile and age : Scotland

Difference between cycle and 2013 cycle

Domicile and age group		2010	2011	2012	2013	2014
Scotland	Under 18	41%	35%	18%	0%	-2%
	18	4%	2%	0%	0%	2%
	19	-4%	1%	3%	0%	-0%
	20-24	-14%	-6%	-7%	0%	2%
	25-29	2%	5%	-1%	0%	11%
	30-34	-3%	7%	-3%	0%	8%
	35 and over	19%	13%	4%	0%	12%

F.2.48 Applicants by domicile and age : Wales

Difference between cycle and 2013 cycle



F.2.49 Applicants by domicile and age : Wales

Domicile and age group		2010	2011	2012	2013	2014
Wales	Under 18	50	50	30	40	30
	18	11,870	11,530	11,340	11,020	11,410
	19	3,810	4,120	3,970	3,930	4,070
	20-24	3,730	4,020	3,980	3,760	3,780
	25-29	1,210	1,320	1,230	1,260	1,290
	30-34	600	680	680	620	650
	35 and over	930	950	910	820	830

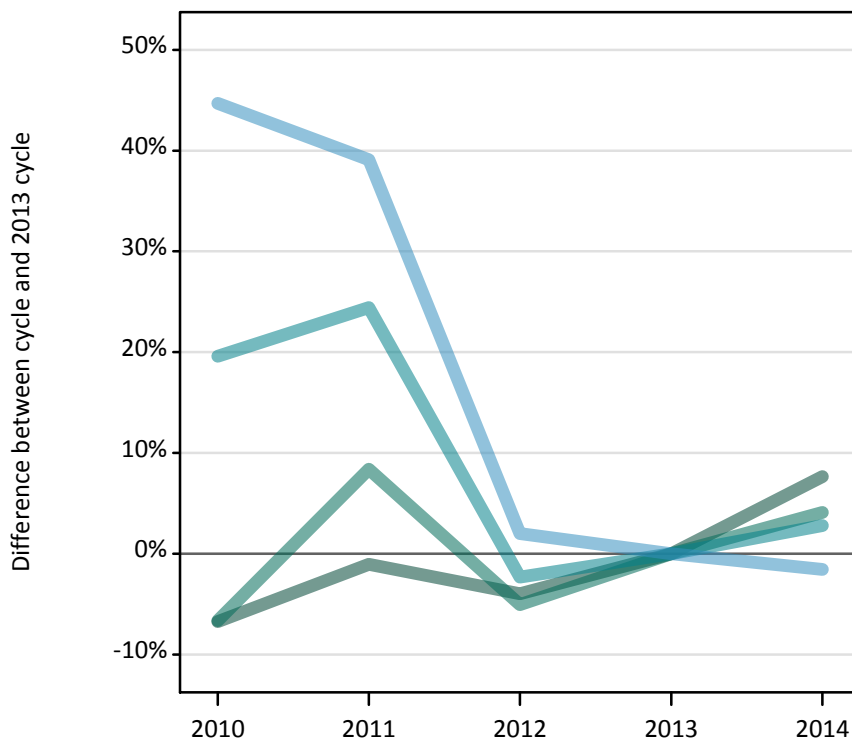
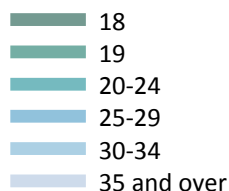
F.2.50 Applicants by domicile and age : Wales

Difference between cycle and 2013 cycle

Domicile and age group		2010	2011	2012	2013	2014
Wales	Under 18	26%	21%	-32%	0%	-26%
	18	8%	5%	3%	0%	4%
	19	-3%	5%	1%	0%	4%
	20-24	-1%	7%	6%	0%	1%
	25-29	-4%	5%	-2%	0%	2%
	30-34	-2%	10%	10%	0%	5%
	35 and over	13%	16%	10%	0%	1%

F.2.51 Applicants by domicile and age : EU (excluding UK)

Difference between cycle and 2013 cycle



F.2.52 Applicants by domicile and age : EU (excluding UK)

Domicile and age group		2010	2011	2012	2013	2014
EU (excluding UK)	Under 18	2,760	2,950	2,840	3,010	3,340
	18	12,460	13,220	12,830	13,360	14,380
	19	11,340	13,160	11,530	12,140	12,640
	20-24	11,700	12,180	9,560	9,790	10,060
	25-29	1,680	1,610	1,180	1,160	1,140
	30-34	420	410	350	320	280
	35 and over	300	260	270	250	260

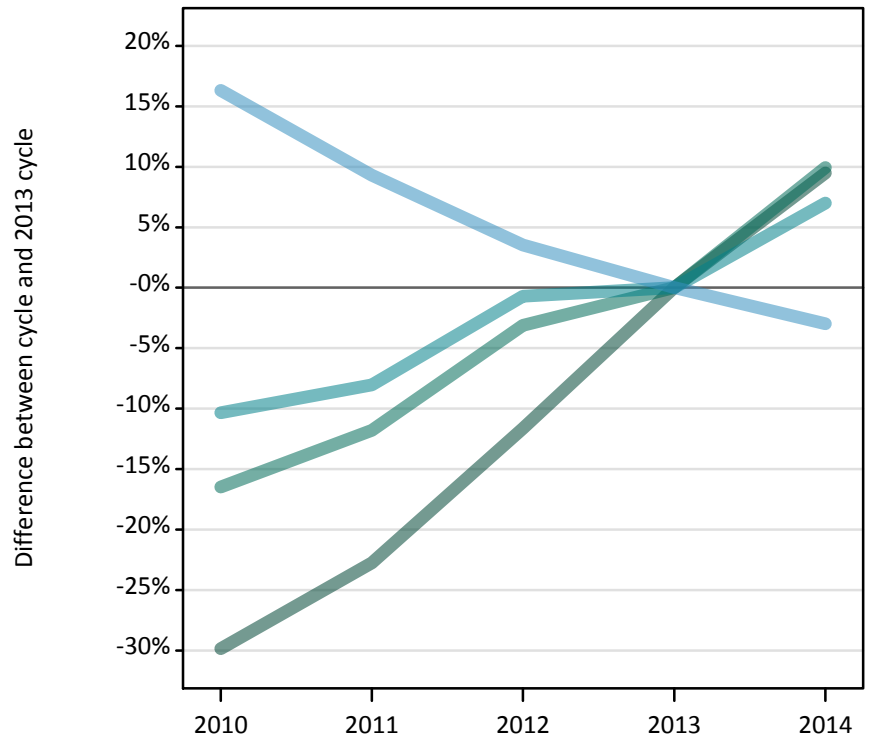
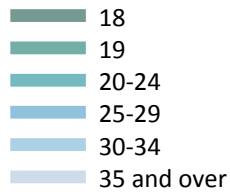
F.2.53 Applicants by domicile and age : EU (excluding UK)

Difference between cycle and 2013 cycle

Domicile and age group		2010	2011	2012	2013	2014
EU (excluding UK)	Under 18	-8%	-2%	-6%	0%	11%
	18	-7%	-1%	-4%	0%	8%
	19	-7%	8%	-5%	0%	4%
	20-24	20%	24%	-2%	0%	3%
	25-29	45%	39%	2%	0%	-2%
	30-34	31%	29%	8%	0%	-13%
	35 and over	18%	5%	6%	0%	2%

F.2.54 Applicants by domicile and age : Not EU

Difference between cycle and 2013 cycle



F.2.55 Applicants by domicile and age : Not EU

Domicile and age group		2010	2011	2012	2013	2014
Not EU	Under 18	2,930	3,140	3,920	4,490	5,210
	18	13,310	14,660	16,770	18,980	20,780
	19	11,310	11,940	13,120	13,540	14,880
	20-24	12,300	12,620	13,630	13,720	14,680
	25-29	1,880	1,760	1,670	1,610	1,570
	30-34	660	600	550	500	520
	35 and over	480	390	410	340	360

F.2.56 Applicants by domicile and age : Not EU

Difference between cycle and 2013 cycle

Domicile and age group		2010	2011	2012	2013	2014
Not EU	Under 18	-35%	-30%	-13%	0%	16%
	18	-30%	-23%	-12%	0%	10%
	19	-16%	-12%	-3%	0%	10%
	20-24	-10%	-8%	-1%	0%	7%
	25-29	16%	9%	4%	0%	-3%
	30-34	33%	20%	10%	0%	3%
	35 and over	41%	14%	19%	0%	6%

F.2.57 Technical notes and definitions

Applicants have been able to submit applications for all 2014 courses since early September.

Counts of the number of applicants reported have been rounded to the nearest 10 applicants, this may result in instances where totals do not equal the sum of the components. Proportional changes have been rounded to the nearest whole percentage point.

The Channel Islands and the Isle of Man are assigned as 'Not EU'. The previous March statistical release assigned the Channel Islands and Isle of Man in the 'UK' therefore the figures for earlier cycles may not match the previous March statistical release.

Age

This statistical release uses country-specific age definitions which align with the cut off points for school/college cohorts within the different administrations of the UK. For England and Wales ages are defined on the 31 August, for Northern Ireland on the 1 July and for Scotland on the 28 February the following year. Defining ages in this way matches the assignment of children to school cohorts. For applicants outside of the UK the cohort cut off for England and Wales has been used.

Applicant

A person who has made an application in the UCAS system during the cycle reported, this includes those who submit applications for deferred entry.

Application

An application to a course at an institution made by an applicant. Applicants may make up to five applications.

Country of institution

The UK country of the institution applied to.

Domicile

Declared area of permanent residence. The Channel Islands and the Isle of Man have been assigned as 'Not EU'.

First time applicant

An applicant that did not apply to the UCAS scheme in the previous cycle.

Reapplicant

An applicant that applied to the UCAS scheme in the previous cycle.

Subject group

The JACS3 classification used to classify courses into subject groups.

Tariff group of institution

Institutions are grouped as higher, medium or lower tariff based on their average levels of attainment of their accepted applicants (summarised through UCAS Tariff points) in recent cycles. Each group of institutions accounted for around a third of all UK 18 year old acceptances in recent cycles.