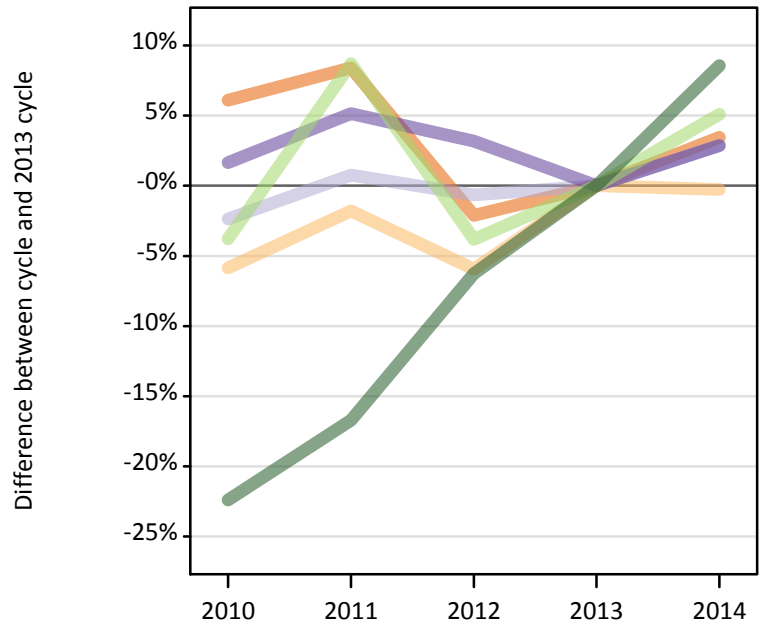
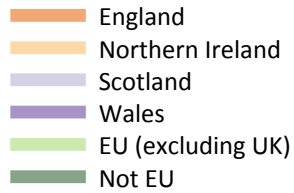


Applicants at the interim February comparison point (2014 cycle)

E.1 Applicants by domicile group at the February interim comparison point (third Monday in month)

Difference between cycle and 2013 cycle



E.2 Applicants by domicile group at the February interim comparison point (third Monday in month)

Domicile of applicant	2010	2011	2012	2013	2014
England	429,550	438,910	396,280	404,850	418,820
Northern Ireland	18,620	19,420	18,600	19,780	19,730
Scotland	39,730	41,000	40,420	40,690	41,860
Wales	21,290	22,020	21,610	20,940	21,540
--UK	509,180	521,350	476,910	486,260	501,940
EU (excluding UK)	37,470	42,330	37,450	38,940	40,920
Not EU	38,170	40,970	46,100	49,190	53,400
--All	584,820	604,650	560,460	574,380	596,260

E.3 Applicants by domicile group at the February interim comparison point (third Monday in month)

Difference between cycle and 2013 cycle

Domicile of applicant	2010	2011	2012	2013	2014
England	6%	8%	-2%	0%	3%
Northern Ireland	-6%	-2%	-6%	0%	0%
Scotland	-2%	1%	-1%	0%	3%
Wales	2%	5%	3%	0%	3%
--UK	5%	7%	-2%	0%	3%
EU (excluding UK)	-4%	9%	-4%	0%	5%
Not EU	-22%	-17%	-6%	0%	9%
--All	2%	5%	-2%	0%	4%

E.4 Technical notes and definitions

Applicants have been able to submit applications for all 2014 courses since early September.

This statistical release covers all applicants excluding RPAs (records of prior acceptance).

Applicant totals are those at the third Monday of the month for each cycle (the 'interim comparison point').

The date of the interim comparison point varies from cycle to cycle. For the February interim comparison point the dates for the 2010 to 2014 cycles are 15/02/2010, 21/02/2011, 20/02/2012, 18/02/2013 and 17/02/2014 respectively.

Counts of the number of applicants reported have been rounded to the nearest 10, this may result in instances where totals do not equal the sum of the components. Proportional changes are calculated from unrounded data and are presented rounded (to nearest 1 per cent).

Applicants

Individuals who have made an application through UCAS during the cycle reported (including applications for deferred entry). RPAs are excluded.

Domicile

Reported from the declared area of permanent residence. The Channel Islands and the Isle of Man are reported under 'Not EU'.