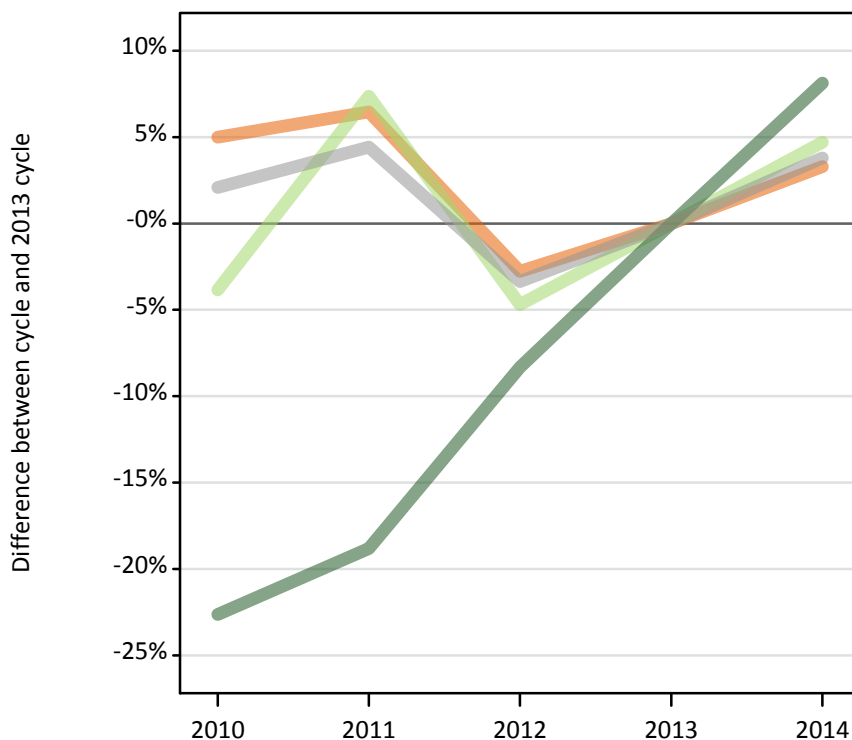


Applicants by domicile at the 15 January deadline

D.1.1 Applicants by domicile group

Difference between cycle and 2013 cycle



D.1.2 Applicants by domicile group

Domicile group of applicant	2010	2011	2012	2013	2014
UK	498,000	504,980	461,180	474,310	489,940
EU (excluding UK)	36,530	40,790	36,210	37,990	39,780
Not EU	35,980	37,760	42,640	46,510	50,290
All domiciles	570,510	583,530	540,020	558,820	580,000

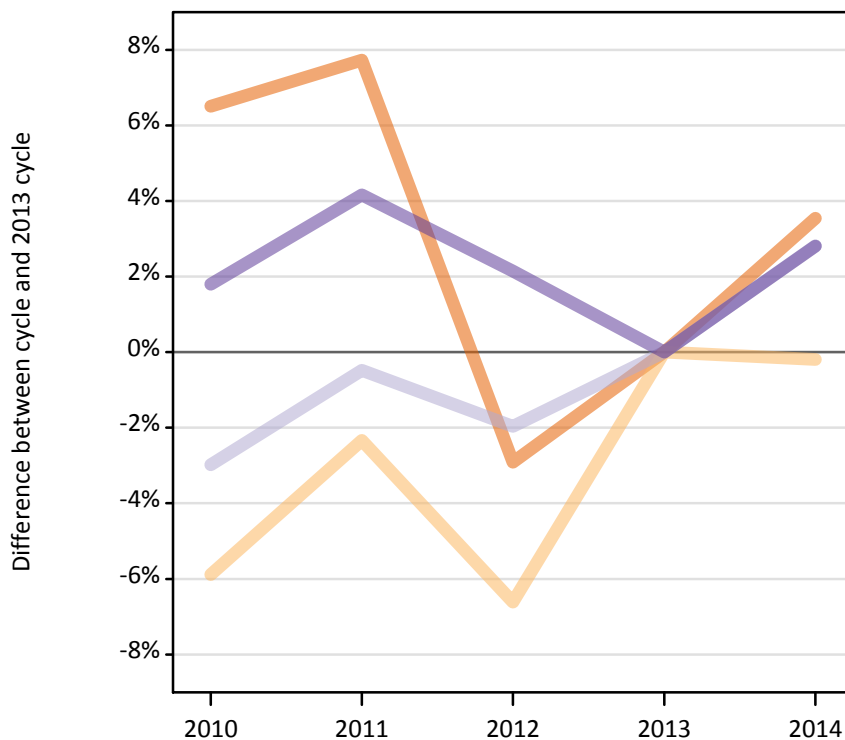
D.1.3 Applicants by domicile group

Difference between cycle and 2013 cycle

Domicile group of applicant	2010	2011	2012	2013	2014
UK	5%	6%	-3%	0%	3%
EU (excluding UK)	-4%	7%	-5%	0%	5%
Not EU	-23%	-19%	-8%	0%	8%
All domiciles	2%	4%	-3%	0%	4%

D.1.4 Applicants by UK country of domicile

Difference between cycle and 2013 cycle



D.1.5 Applicants by UK country of domicile

Domicile group of applicant	2010	2011	2012	2013	2014
England	419,990	424,800	382,840	394,330	408,300
Northern Ireland	18,440	19,130	18,290	19,590	19,550
Scotland	38,760	39,760	39,170	39,950	41,080
Wales	20,810	21,290	20,880	20,440	21,010
UK	498,000	504,980	461,180	474,310	489,940

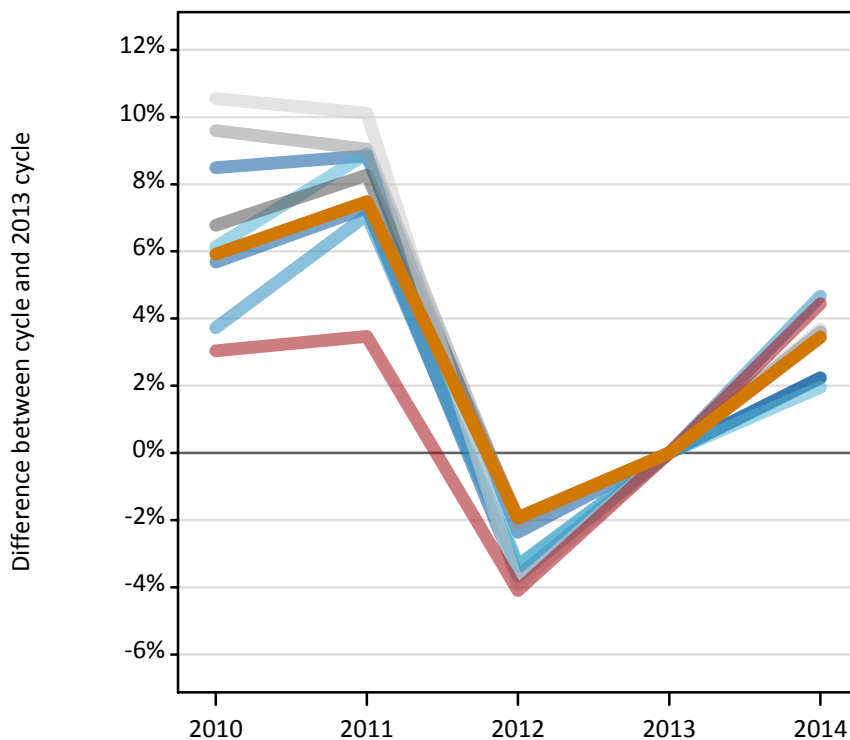
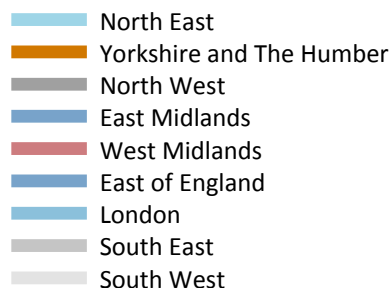
D.1.6 Applicants by UK country of domicile

Difference between cycle and 2013 cycle

Domicile group of applicant	2010	2011	2012	2013	2014
England	7%	8%	-3%	0%	4%
Northern Ireland	-6%	-2%	-7%	0%	-0%
Scotland	-3%	-0%	-2%	0%	3%
Wales	2%	4%	2%	0%	3%
UK	5%	6%	-3%	0%	3%

D.1.7 Applicants by English region of domicile

Difference between cycle and 2013 cycle



D.1.8 Applicants by English region of domicile

English region	2010	2011	2012	2013	2014
North East	18,540	19,030	16,890	17,470	17,810
Yorkshire and The Humber	38,350	38,920	35,510	36,210	37,460
North West	57,040	57,840	52,380	53,420	55,350
East Midlands	33,360	33,470	30,020	30,750	31,430
West Midlands	43,090	43,270	40,110	41,820	43,680
East of England	43,000	43,650	39,190	40,680	41,590
London	77,950	80,470	72,620	75,150	78,660
South East	69,170	68,820	61,800	63,110	65,280
South West	39,490	39,340	34,320	35,730	37,040

D.1.9 Applicants by English region of domicile

Difference between cycle and 2013 cycle

English region	2010	2011	2012	2013	2014
North East	6%	9%	-3%	0%	2%
Yorkshire and The Humber	6%	7%	-2%	0%	3%
North West	7%	8%	-2%	0%	4%
East Midlands	8%	9%	-2%	0%	2%
West Midlands	3%	3%	-4%	0%	4%
East of England	6%	7%	-4%	0%	2%
London	4%	7%	-3%	0%	5%
South East	10%	9%	-2%	0%	3%
South West	11%	10%	-4%	0%	4%

D.1.10 Applicants by declared country of domicile

Selected countries

Declared country of domicile	2010	2011	2012	2013	2014
Australia	310	320	400	450	480
Austria	420	490	500	520	540
Azerbaijan	150	110	140	150	190
Bahrain	210	210	240	280	280
Bangladesh	250	240	250	210	210
Belgium	860	900	790	860	920
Bermuda	270	200	170	150	170
Brazil	130	110	150	160	190
Brunei	590	460	460	550	650
Bulgaria	1,940	2,230	2,140	2,440	2,160
Canada	1,430	1,510	1,670	1,700	1,690
Cayman Islands	50	90	90	80	110
China	4,450	5,240	6,280	6,900	7,170
Croatia	30	30	30	60	120
Cyprus (European Union)	2,910	3,460	2,840	2,850	2,810
Czech Republic	370	420	400	410	520
Denmark	390	380	360	400	390
Egypt	150	170	240	380	470
Estonia	440	560	480	550	440
Finland	640	790	660	720	800
France	2,630	3,480	3,180	3,380	3,850
Germany	3,300	3,490	2,940	2,750	2,740
Ghana	180	140	150	140	190
Gibraltar	270	290	270	290	270
Greece	1,860	2,050	1,860	1,990	1,970
Guernsey	330	300	290	280	290
Hong Kong	3,140	3,640	5,000	5,050	5,460
Hungary	360	360	520	720	730
India	1,750	1,870	2,190	2,610	2,870
Indonesia	140	210	250	350	380
Iran	230	260	270	180	170
Ireland	7,320	6,710	5,430	5,450	5,230
Isle of Man	540	540	490	470	480
Israel	90	80	90	110	90
Italy	1,740	2,070	2,230	2,730	3,440
Japan	290	320	350	400	440
Jersey	570	570	540	510	480
Jordan	240	280	280	330	330
Kazakhstan	350	280	250	280	270
Kenya	490	470	490	500	510
Korea (South)	800	1,060	1,030	1,110	1,050
Kuwait	190	200	240	240	290

Declared country of domicile	2010	2011	2012	2013	2014
Latvia	960	890	640	480	460
Lebanon	80	110	140	160	180
Lithuania	2,150	2,940	2,160	1,860	1,680
Luxembourg	330	360	360	400	440
Macao	70	90	130	120	150
Malaysia	2,080	2,270	2,590	3,230	4,080
Malta	120	120	80	100	90
Mauritius	360	320	330	250	340
Mexico	110	90	100	110	110
Morocco	110	140	170	220	270
Netherlands	700	720	650	680	710
New Zealand	100	120	120	140	160
Nigeria	1,020	1,030	960	1,060	1,120
Norway	850	810	840	990	960
Oman	110	120	110	140	160
Pakistan	1,670	1,440	1,370	1,370	1,350
Philippines	80	80	80	100	100
Poland	1,700	1,740	1,630	1,880	2,160
Portugal	490	590	550	680	710
Qatar	130	150	180	270	230
Romania	1,420	2,250	2,210	2,110	2,340
Russia	530	560	630	820	1,000
Saudi Arabia	530	490	530	560	580
Serbia	60	60	80	120	100
Singapore	2,420	2,790	3,240	3,460	3,730
Slovakia	370	410	420	400	530
Slovenia	80	100	90	120	140
South Africa	190	170	190	220	250
Spain	1,140	1,430	1,380	1,770	2,140
Sri Lanka	310	310	260	250	240
Sweden	1,540	1,490	1,360	1,360	1,370
Switzerland	780	810	870	1,010	1,030
Taiwan	180	230	240	230	270
Tanzania	110	110	100	110	140
Thailand	450	520	580	550	630
Trinidad and Tobago	130	140	140	150	140
Turkey	290	320	380	450	490
Ukraine	160	160	180	250	270
United Arab Emirates	590	640	740	830	1,000
United States of America	2,260	2,150	2,370	2,710	2,930
Vietnam	450	470	530	520	460
Zimbabwe	250	190	230	220	240

D.1.11 Applicants by declared country of domicile

Selected countries, difference between cycle and 2013 cycle

Declared country of domicile	2010	2011	2012	2013	2014
Australia	-32%	-30%	-12%	0%	7%
Austria	-20%	-7%	-4%	0%	4%
Azerbaijan	6%	-21%	-1%	0%	33%
Bahrain	-23%	-23%	-12%	0%	1%
Bangladesh	19%	14%	21%	0%	2%
Belgium	0%	4%	-9%	0%	6%
Bermuda	77%	28%	8%	0%	8%
Brazil	-20%	-32%	-11%	0%	16%
Brunei	7%	-16%	-16%	0%	19%
Bulgaria	-20%	-9%	-12%	0%	-11%
Canada	-16%	-11%	-2%	0%	-0%
Cayman Islands	-37%	8%	5%	0%	27%
China	-35%	-24%	-9%	0%	4%
Croatia	-52%	-41%	-43%	0%	109%
Cyprus (European Union)	2%	21%	-0%	0%	-1%
Czech Republic	-10%	1%	-4%	0%	26%
Denmark	-3%	-4%	-9%	0%	-3%
Egypt	-62%	-55%	-38%	0%	24%
Estonia	-19%	3%	-12%	0%	-19%
Finland	-12%	9%	-9%	0%	11%
France	-22%	3%	-6%	0%	14%
Germany	20%	27%	7%	0%	-1%
Ghana	30%	4%	8%	0%	37%
Gibraltar	-8%	0%	-8%	0%	-7%
Greece	-7%	3%	-7%	0%	-1%
Guernsey	18%	5%	1%	0%	2%
Hong Kong	-38%	-28%	-1%	0%	8%
Hungary	-50%	-49%	-28%	0%	2%
India	-33%	-28%	-16%	0%	10%
Indonesia	-59%	-41%	-29%	0%	9%
Iran	33%	48%	54%	0%	-2%
Ireland	34%	23%	-0%	0%	-4%
Isle of Man	15%	14%	5%	0%	2%
Israel	-19%	-33%	-24%	0%	-23%
Italy	-36%	-24%	-18%	0%	26%
Japan	-28%	-21%	-12%	0%	10%
Jersey	11%	12%	5%	0%	-7%
Jordan	-26%	-13%	-14%	0%	2%
Kazakhstan	24%	0%	-10%	0%	-5%
Kenya	-4%	-6%	-3%	0%	1%
Korea (South)	-28%	-4%	-7%	0%	-5%
Kuwait	-20%	-16%	0%	0%	22%

Declared country of domicile	2010	2011	2012	2013	2014
Latvia	99%	86%	33%	0%	-5%
Lebanon	-48%	-30%	-11%	0%	15%
Lithuania	16%	59%	16%	0%	-10%
Luxembourg	-19%	-11%	-12%	0%	10%
Macao	-46%	-24%	6%	0%	28%
Malaysia	-36%	-30%	-20%	0%	26%
Malta	29%	22%	-13%	0%	-11%
Mauritius	42%	26%	29%	0%	37%
Mexico	-1%	-21%	-15%	0%	-1%
Morocco	-50%	-34%	-23%	0%	25%
Netherlands	3%	6%	-4%	0%	5%
New Zealand	-25%	-11%	-9%	0%	16%
Nigeria	-4%	-3%	-10%	0%	6%
Norway	-15%	-18%	-15%	0%	-3%
Oman	-26%	-19%	-21%	0%	13%
Pakistan	22%	5%	0%	0%	-1%
Philippines	-24%	-16%	-23%	0%	0%
Poland	-10%	-8%	-14%	0%	15%
Portugal	-28%	-14%	-20%	0%	4%
Qatar	-52%	-44%	-32%	0%	-15%
Romania	-33%	6%	5%	0%	11%
Russia	-35%	-31%	-22%	0%	23%
Saudi Arabia	-7%	-14%	-6%	0%	3%
Serbia	-48%	-50%	-33%	0%	-15%
Singapore	-30%	-19%	-6%	0%	8%
Slovakia	-9%	2%	4%	0%	30%
Slovenia	-28%	-17%	-18%	0%	23%
South Africa	-14%	-26%	-14%	0%	13%
Spain	-36%	-19%	-22%	0%	21%
Sri Lanka	23%	26%	4%	0%	-2%
Sweden	14%	10%	0%	0%	1%
Switzerland	-23%	-20%	-14%	0%	2%
Taiwan	-19%	2%	4%	0%	18%
Tanzania	-7%	-5%	-13%	0%	22%
Thailand	-18%	-6%	5%	0%	15%
Trinidad and Tobago	-14%	-3%	-7%	0%	-3%
Turkey	-35%	-30%	-14%	0%	9%
Ukraine	-35%	-38%	-28%	0%	5%
United Arab Emirates	-29%	-23%	-11%	0%	21%
United States of America	-17%	-21%	-13%	0%	8%
Vietnam	-14%	-10%	1%	0%	-13%
Zimbabwe	15%	-10%	8%	0%	13%

D.1.12 Technical notes and definitions

Applicants have been able to submit applications for all 2014 courses since early September.

Counts of the number of applicants reported have been rounded to the nearest 10 applicants, this may result in instances where totals do not equal the sum of the components. Proportional changes have been rounded to the nearest whole percentage point.

The Channel Islands and the Isle of Man are assigned as 'Not EU'. The previous January statistical release assigned the Channel Islands and Isle of Man in the 'UK' therefore the figures for earlier cycles may not match the previous January statistical release.

Age

This statistical release uses country-specific age definitions which align with the cut off points for school/college cohorts within the different administrations of the UK. For England and Wales ages are defined on the 31 August, for Northern Ireland on the 1 July and for Scotland on the 28 February the following year. Defining ages in this way matches the assignment of children to school cohorts. For applicants outside of the UK the cohort cut off for England and Wales has been used.

Applicant

A person who has made an application in the UCAS system during the cycle reported, this includes those who submit applications for deferred entry.

Application

An application to a course at an institution made by an applicant. Applicants may make up to five applications.

Country of institution

The UK country of the institution applied to.

Domicile

Declared area of permanent residence. The Channel Islands and the Isle of Man have been assigned as 'Not EU'.

First time applicant

An applicant that did not apply to the UCAS scheme in the previous cycle.

Reapplicant

An applicant that applied to the UCAS scheme in the previous cycle.

Subject group

The JACS3 classification used to classify courses into subject groups.

Tariff group of institution

Institutions are grouped as higher, medium or lower tariff based on their average levels of attainment of their accepted applicants (summarised through UCAS Tariff points) in recent cycles. Each group of institutions accounted for around a third of all UK 18 year old acceptances in recent cycles.