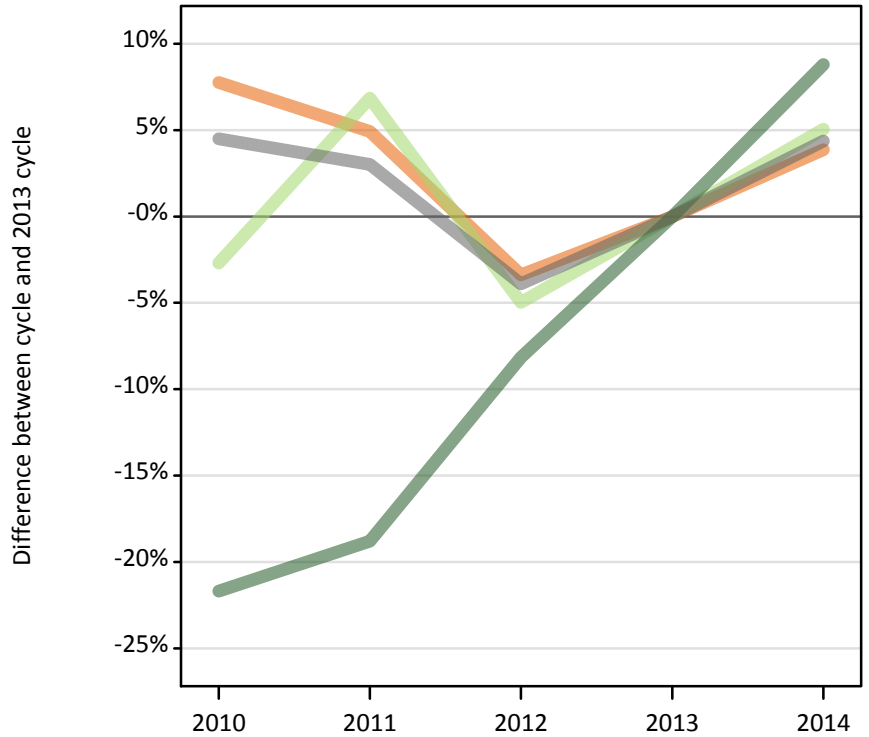


## Applicants by reapplication status at the 15 January deadline

### D.3.1 First-time applicants by domicile group

Difference between cycle and 2013 cycle

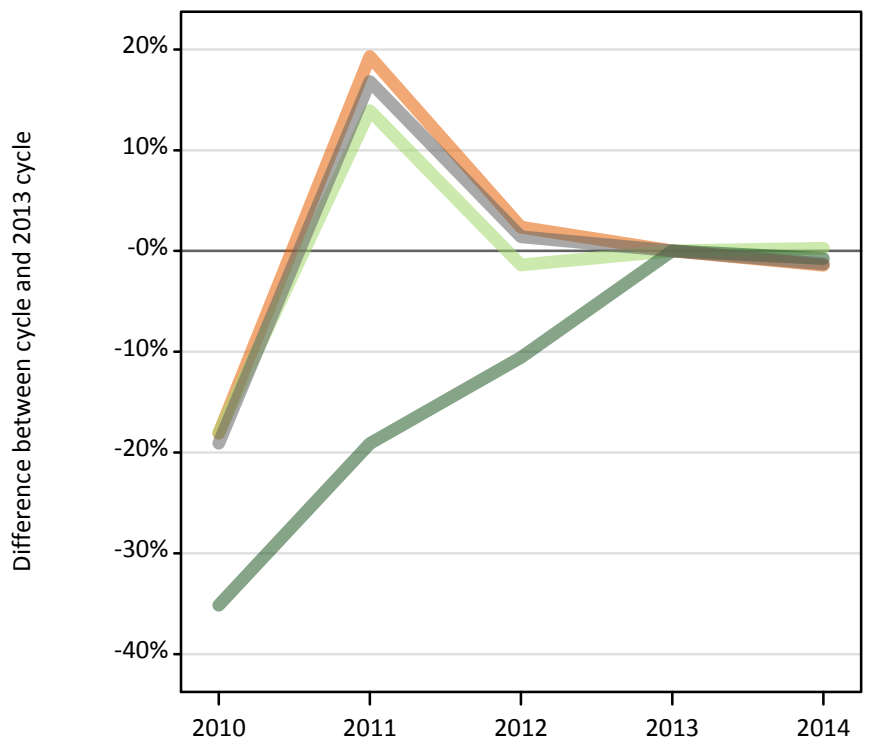
- UK
- EU (excluding UK)
- Not EU
- All domiciles



### D.3.2 Previously applied applicants by domicile group

Difference between cycle and 2013 cycle

- UK
- EU (excluding UK)
- Not EU
- All domiciles



### D.3.3 Applicants by whether previously applied and domicile group

Applicant status and domicile group		2010	2011	2012	2013	2014
First-time applicant	UK	456,430	444,440	409,240	423,570	439,910
	EU (excluding UK)	34,230	37,590	33,430	35,180	36,960
	Not EU	33,850	35,090	39,690	43,220	47,020
	All domiciles	524,510	517,120	482,360	501,970	523,890
Previously applied	UK	41,570	60,540	51,940	50,740	50,030
	EU (excluding UK)	2,310	3,200	2,770	2,810	2,820
	Not EU	2,140	2,660	2,950	3,290	3,270
	All domiciles	46,010	66,410	57,660	56,850	56,120
All	UK	498,000	504,980	461,180	474,310	489,940
	EU (excluding UK)	36,530	40,790	36,210	37,990	39,780
	Not EU	35,980	37,760	42,640	46,510	50,290
	All domiciles	570,510	583,530	540,020	558,820	580,000

### D.3.4 Applicants by whether previously applied and domicile group

Difference between cycle and 2013 cycle

Applicant status and domicile group		2010	2011	2012	2013	2014
First-time applicant	UK	8%	5%	-3%	0%	4%
	EU (excluding UK)	-3%	7%	-5%	0%	5%
	Not EU	-22%	-19%	-8%	0%	9%
	All domiciles	4%	3%	-4%	0%	4%
Previously applied	UK	-18%	19%	2%	0%	-1%
	EU (excluding UK)	-18%	14%	-1%	0%	0%
	Not EU	-35%	-19%	-11%	0%	-1%
	All domiciles	-19%	17%	1%	0%	-1%
All	UK	5%	6%	-3%	0%	3%
	EU (excluding UK)	-4%	7%	-5%	0%	5%
	Not EU	-23%	-19%	-8%	0%	8%
	All domiciles	2%	4%	-3%	0%	4%

### D.3.5 First-time applicants by UK country of domicile

Difference between cycle and 2013 cycle



### D.3.6 Previously applied applicants by UK country of domicile

Difference between cycle and 2013 cycle



### D.3.7 Applicants by first-time and previously applied and UK country of domicile

Applicant status and domicile group		2010	2011	2012	2013	2014
First-time applicant	England	384,130	374,040	340,650	353,130	367,650
	Northern Ireland	17,070	16,830	16,200	17,300	17,270
	Scotland	35,790	34,510	33,870	34,680	35,870
	Wales	19,440	19,060	18,510	18,460	19,120
	UK	456,430	444,440	409,240	423,570	439,910
Previously applied	England	35,860	50,760	42,200	41,200	40,650
	Northern Ireland	1,370	2,300	2,090	2,280	2,280
	Scotland	2,970	5,250	5,300	5,280	5,210
	Wales	1,360	2,230	2,360	1,980	1,890
	UK	41,570	60,540	51,940	50,740	50,030
All	England	419,990	424,800	382,840	394,330	408,300
	Northern Ireland	18,440	19,130	18,290	19,590	19,550
	Scotland	38,760	39,760	39,170	39,950	41,080
	Wales	20,810	21,290	20,880	20,440	21,010
	UK	498,000	504,980	461,180	474,310	489,940

### D.3.8 Applicants by first-time and previously applied and UK country of domicile

Difference between cycle and 2013 cycle

Applicant status and domicile group		2010	2011	2012	2013	2014
First-time applicant	England	9%	6%	-4%	0%	4%
	Northern Ireland	-1%	-3%	-6%	0%	-0%
	Scotland	3%	-0%	-2%	0%	3%
	Wales	5%	3%	0%	0%	4%
	UK	8%	5%	-3%	0%	4%
Previously applied	England	-13%	23%	2%	0%	-1%
	Northern Ireland	-40%	1%	-9%	0%	-0%
	Scotland	-44%	-1%	0%	0%	-1%
	Wales	-31%	12%	19%	0%	-5%
	UK	-18%	19%	2%	0%	-1%
All	England	7%	8%	-3%	0%	4%
	Northern Ireland	-6%	-2%	-7%	0%	-0%
	Scotland	-3%	-0%	-2%	0%	3%
	Wales	2%	4%	2%	0%	3%
	UK	5%	6%	-3%	0%	3%

### D.3.9 19 year old first-time applicants by UK country of domicile

Difference between cycle and 2013 cycle

- England
- Northern Ireland
- Scotland
- Wales



### D.3.10 19 year old previously applied applicants by UK country of domicile

Difference between cycle and 2013 cycle

- England
- Northern Ireland
- Scotland
- Wales



### D.3.11 19 year old applicants by first-time and previously applied and UK country of domicile

Applicant status and domicile group		2010	2011	2012	2013	2014
First-time applicant	England	61,680	57,700	48,090	56,030	59,480
	Northern Ireland	1,380	1,270	1,130	1,260	1,520
	Scotland	3,470	2,830	2,920	2,890	3,000
	Wales	2,690	2,600	2,480	2,740	2,870
	UK	69,220	64,410	54,630	62,920	66,870
Previously applied	England	20,570	29,040	21,510	22,930	21,420
	Northern Ireland	970	1,620	1,420	1,600	1,440
	Scotland	1,420	2,390	2,410	2,360	2,270
	Wales	780	1,250	1,260	1,000	980
	UK	23,740	34,300	26,590	27,890	26,100
All	England	82,250	86,740	69,600	78,950	80,900
	Northern Ireland	2,350	2,900	2,550	2,870	2,950
	Scotland	4,890	5,220	5,330	5,250	5,270
	Wales	3,480	3,850	3,740	3,740	3,850
	UK	92,970	98,700	81,220	90,810	92,970

### D.3.12 19 year old applicants by first-time and previously applied and UK country of domicile

Difference between cycle and 2013 cycle

Applicant status and domicile group		2010	2011	2012	2013	2014
First-time applicant	England	10%	3%	-14%	0%	6%
	Northern Ireland	9%	1%	-10%	0%	20%
	Scotland	20%	-2%	1%	0%	4%
	Wales	-2%	-5%	-9%	0%	5%
	UK	10%	2%	-13%	0%	6%
Previously applied	England	-10%	27%	-6%	0%	-7%
	Northern Ireland	-39%	1%	-12%	0%	-11%
	Scotland	-40%	1%	2%	0%	-4%
	Wales	-22%	25%	26%	0%	-2%
	UK	-15%	23%	-5%	0%	-6%
All	England	4%	10%	-12%	0%	2%
	Northern Ireland	-18%	1%	-11%	0%	3%
	Scotland	-7%	-1%	2%	0%	0%
	Wales	-7%	3%	0%	0%	3%
	UK	2%	9%	-11%	0%	2%

### D.3.13 Technical notes and definitions

Applicants have been able to submit applications for all 2014 courses since early September.

Counts of the number of applicants reported have been rounded to the nearest 10 applicants, this may result in instances where totals do not equal the sum of the components. Proportional changes have been rounded to the nearest whole percentage point.

The Channel Islands and the Isle of Man are assigned as 'Not EU'. The previous January statistical release assigned the Channel Islands and Isle of Man in the 'UK' therefore the figures for earlier cycles may not match the previous January statistical release.

#### Age

This statistical release uses country-specific age definitions which align with the cut off points for school/college cohorts within the different administrations of the UK. For England and Wales ages are defined on the 31 August, for Northern Ireland on the 1 July and for Scotland on the 28 February the following year. Defining ages in this way matches the assignment of children to school cohorts. For applicants outside of the UK the cohort cut off for England and Wales has been used.

#### Applicant

A person who has made an application in the UCAS system during the cycle reported, this includes those who submit applications for deferred entry.

#### Application

An application to a course at an institution made by an applicant. Applicants may make up to five applications.

#### Country of institution

The UK country of the institution applied to.

#### Domicile

Declared area of permanent residence. The Channel Islands and the Isle of Man have been assigned as 'Not EU'.

#### First time applicant

An applicant that did not apply to the UCAS scheme in the previous cycle.

#### Reapplicant

An applicant that applied to the UCAS scheme in the previous cycle.

#### Subject group

The JACS3 classification used to classify courses into subject groups.

#### Tariff group of institution

Institutions are grouped as higher, medium or lower tariff based on their average levels of attainment of their accepted applicants (summarised through UCAS Tariff points) in recent cycles. Each group of institutions accounted for around a third of all UK 18 year old acceptances in recent cycles.