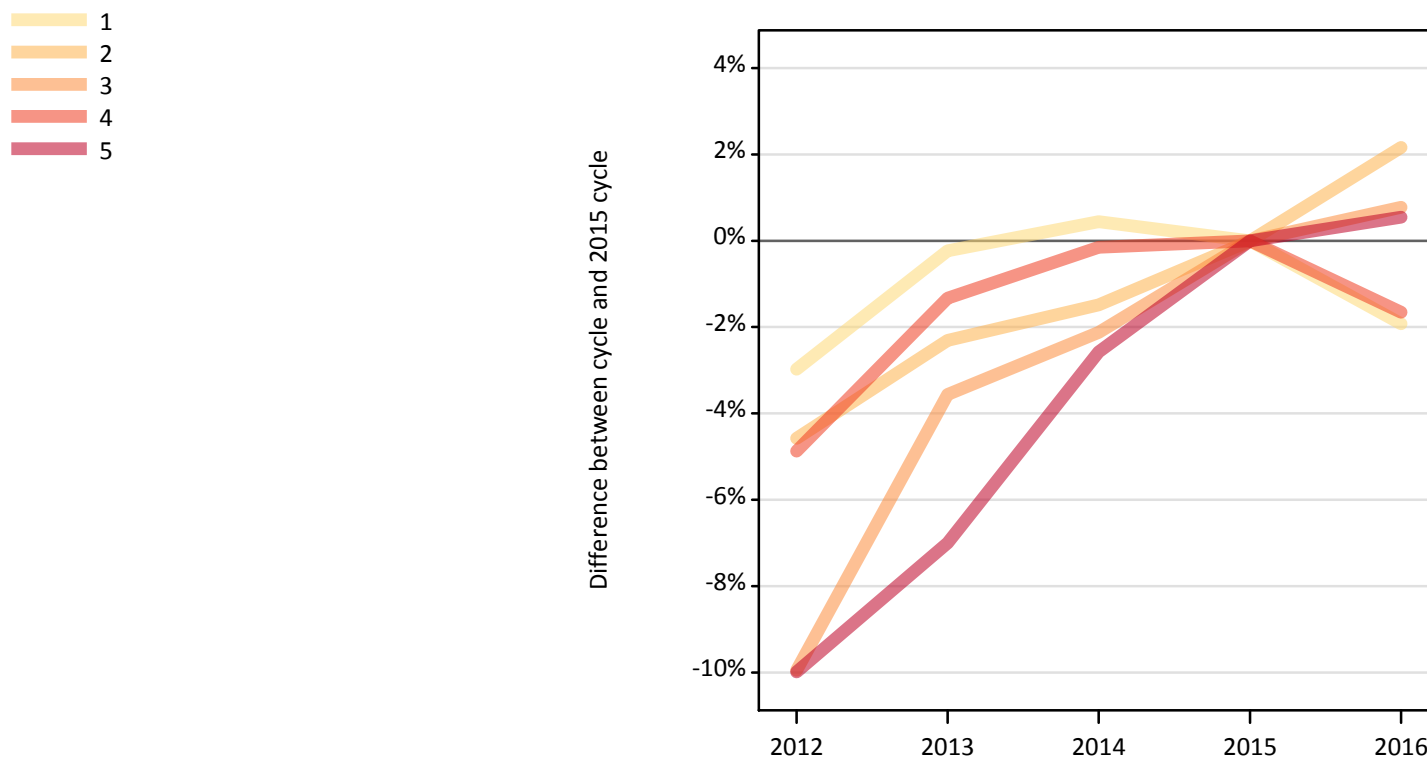


# January Deadline Analysis: Applications

## Applicants by number of applications at the 15 January deadline

### D.4.1 Applicants by domicile and number of applications made : All domiciles Difference between cycle and 2015 cycle



### D.4.2 Applicants by domicile and number of applications made : All domiciles

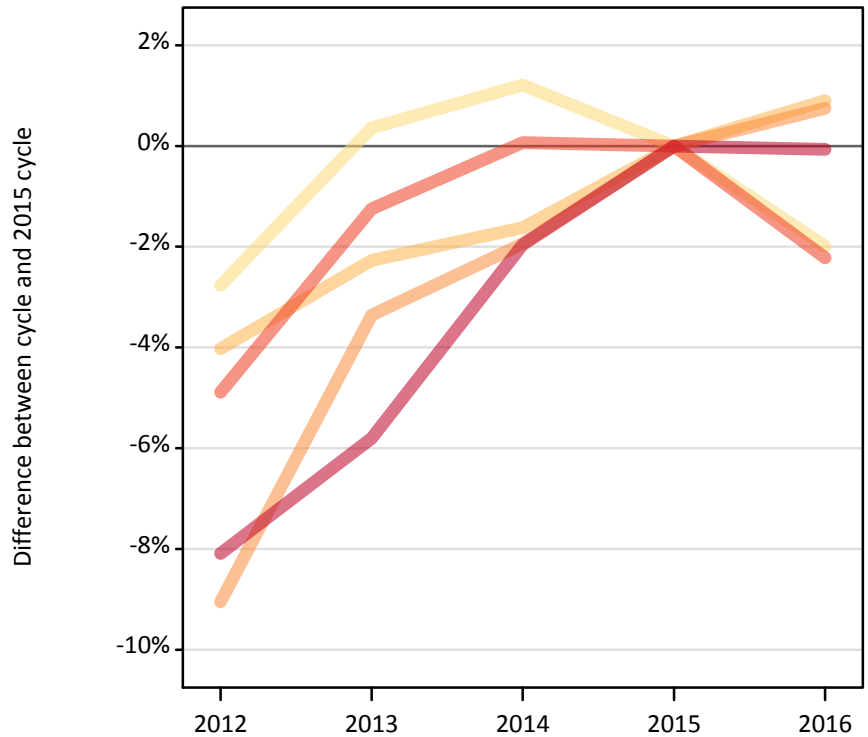
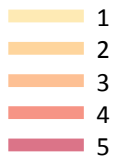
Domicile and number of applications made by applicant		2012	2013	2014	2015	2016
All domiciles	1	40,410	41,550	41,830	41,640	40,840
	2	20,640	21,130	21,310	21,630	22,090
	3	27,960	29,950	30,390	31,050	31,290
	4	52,090	54,020	54,670	54,750	53,850
	5	398,930	412,170	431,810	443,210	445,640
	All	540,020	558,820	580,000	592,290	593,720

### D.4.3 Applicants by domicile and number of applications made : All domiciles Difference between cycle and 2015 cycle

Domicile and number of applications made by applicant		2012	2013	2014	2015	2016
All domiciles	1	-3%	-0%	0%	0%	-2%
	2	-5%	-2%	-1%	0%	2%
	3	-10%	-4%	-2%	0%	1%
	4	-5%	-1%	-0%	0%	-2%
	5	-10%	-7%	-3%	0%	1%
	All	-9%	-6%	-2%	0%	0%

#### D.4.4 Applicants by domicile and number of applications made : UK

Difference between cycle and 2015 cycle



#### D.4.5 Applicants by domicile and number of applications made : UK

Domicile and number of applications made by applicant		2012	2013	2014	2015	2016
UK	1	34,030	35,130	35,430	35,000	34,310
	2	17,970	18,300	18,420	18,720	18,890
	3	24,380	25,910	26,290	26,810	27,010
	4	45,040	46,760	47,380	47,350	46,300
	5	339,760	348,220	362,420	369,670	369,430
	All	461,180	474,310	489,940	497,550	495,940

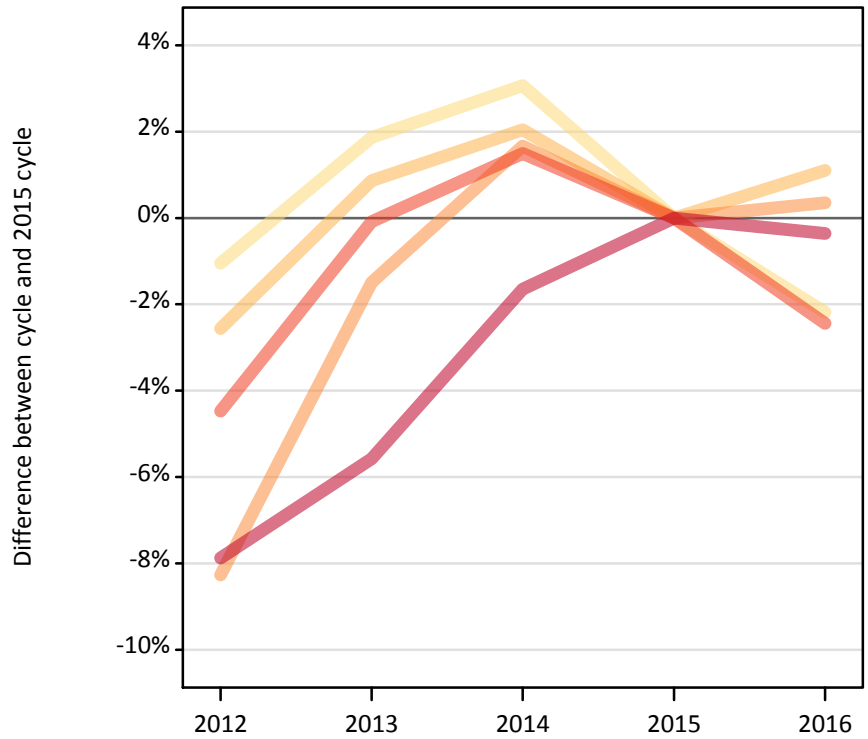
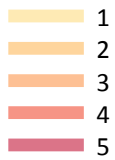
#### D.4.6 Applicants by domicile and number of applications made : UK

Difference between cycle and 2015 cycle

Domicile and number of applications made by applicant		2012	2013	2014	2015	2016
UK	1	-3%	0%	1%	0%	-2%
	2	-4%	-2%	-2%	0%	1%
	3	-9%	-3%	-2%	0%	1%
	4	-5%	-1%	0%	0%	-2%
	5	-8%	-6%	-2%	0%	-0%
	All	-7%	-5%	-2%	0%	-0%

#### D.4.7 Applicants by domicile and number of applications made : England

Difference between cycle and 2015 cycle



#### D.4.8 Applicants by domicile and number of applications made : England

Domicile and number of applications made by applicant		2012	2013	2014	2015	2016
England	1	27,350	28,160	28,490	27,640	27,040
	2	13,490	13,970	14,130	13,850	14,000
	3	18,550	19,920	20,560	20,220	20,290
	4	36,150	37,810	38,410	37,850	36,920
	5	287,300	294,480	306,710	311,870	310,730
	All	382,840	394,330	408,300	411,420	408,990

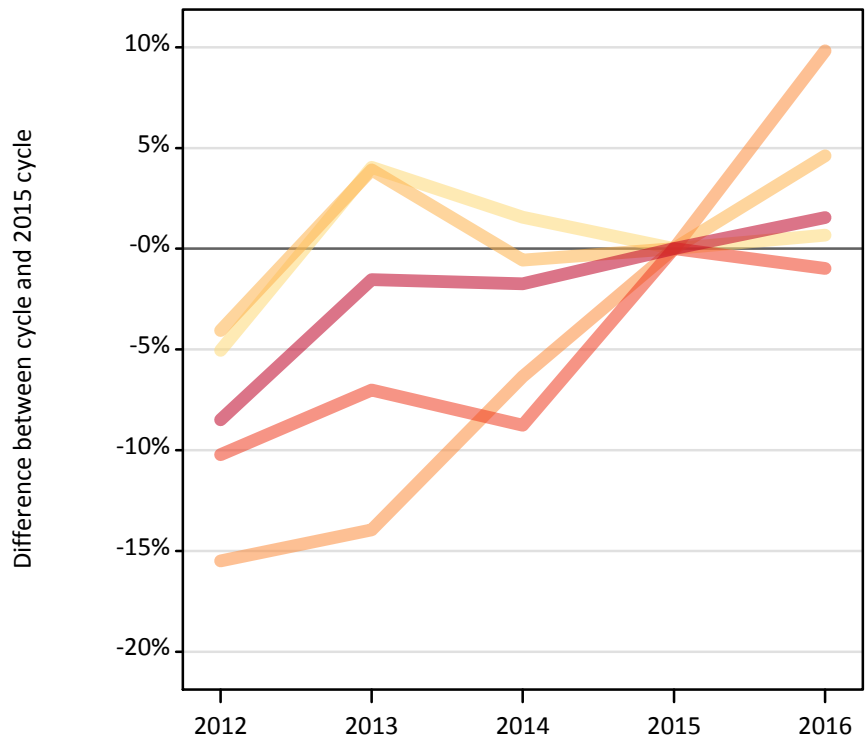
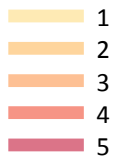
#### D.4.9 Applicants by domicile and number of applications made : England

Difference between cycle and 2015 cycle

Domicile and number of applications made by applicant		2012	2013	2014	2015	2016
England	1	-1%	2%	3%	0%	-2%
	2	-3%	1%	2%	0%	1%
	3	-8%	-1%	2%	0%	0%
	4	-4%	-0%	1%	0%	-2%
	5	-8%	-6%	-2%	0%	-0%
	All	-7%	-4%	-1%	0%	-1%

#### D.4.10 Applicants by domicile and number of applications made : Northern Ireland

Difference between cycle and 2015 cycle



#### D.4.11 Applicants by domicile and number of applications made : Northern Ireland

Domicile and number of applications made by applicant		2012	2013	2014	2015	2016
Northern Ireland	1	850	930	910	890	900
	2	690	740	710	710	750
	3	880	890	970	1,040	1,140
	4	1,650	1,710	1,680	1,840	1,820
	5	14,230	15,310	15,280	15,550	15,790
	All	18,290	19,590	19,550	20,040	20,400

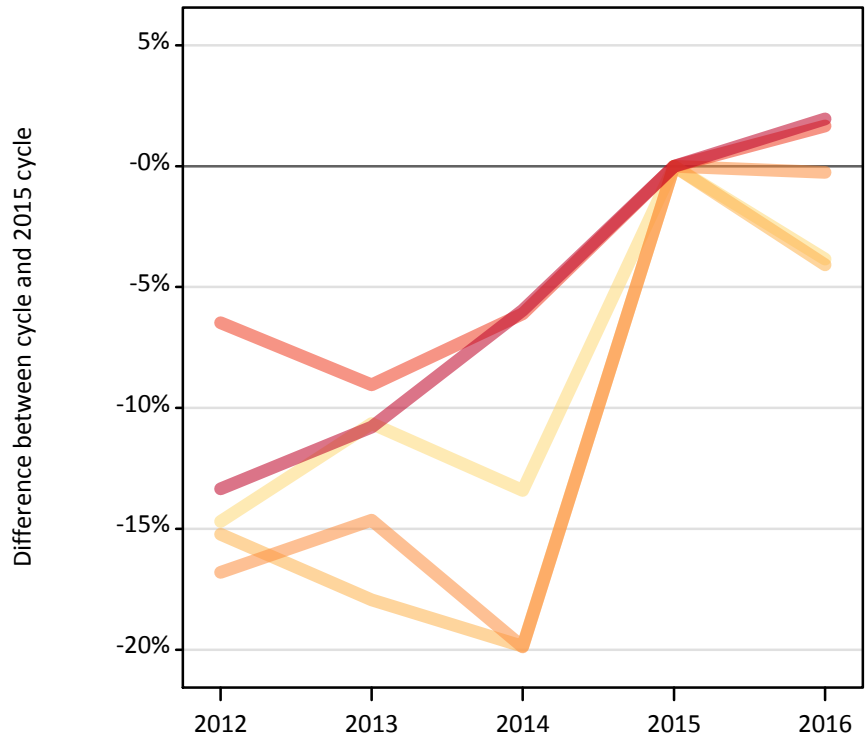
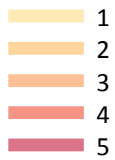
#### D.4.12 Applicants by domicile and number of applications made : Northern Ireland

Difference between cycle and 2015 cycle

Domicile and number of applications made by applicant		2012	2013	2014	2015	2016
Northern Ireland	1	-5%	4%	2%	0%	1%
	2	-4%	4%	-1%	0%	5%
	3	-15%	-14%	-6%	0%	10%
	4	-10%	-7%	-9%	0%	-1%
	5	-8%	-2%	-2%	0%	2%
	All	-9%	-2%	-2%	0%	2%

#### D.4.13 Applicants by domicile and number of applications made : Scotland

Difference between cycle and 2015 cycle



#### D.4.14 Applicants by domicile and number of applications made : Scotland

Domicile and number of applications made by applicant		2012	2013	2014	2015	2016
Scotland	1	3,980	4,170	4,040	4,660	4,480
	2	2,600	2,520	2,460	3,070	2,940
	3	3,290	3,380	3,170	3,960	3,950
	4	4,770	4,630	4,780	5,100	5,180
	5	24,540	25,260	26,630	28,320	28,870
	All	39,170	39,950	41,080	45,100	45,420

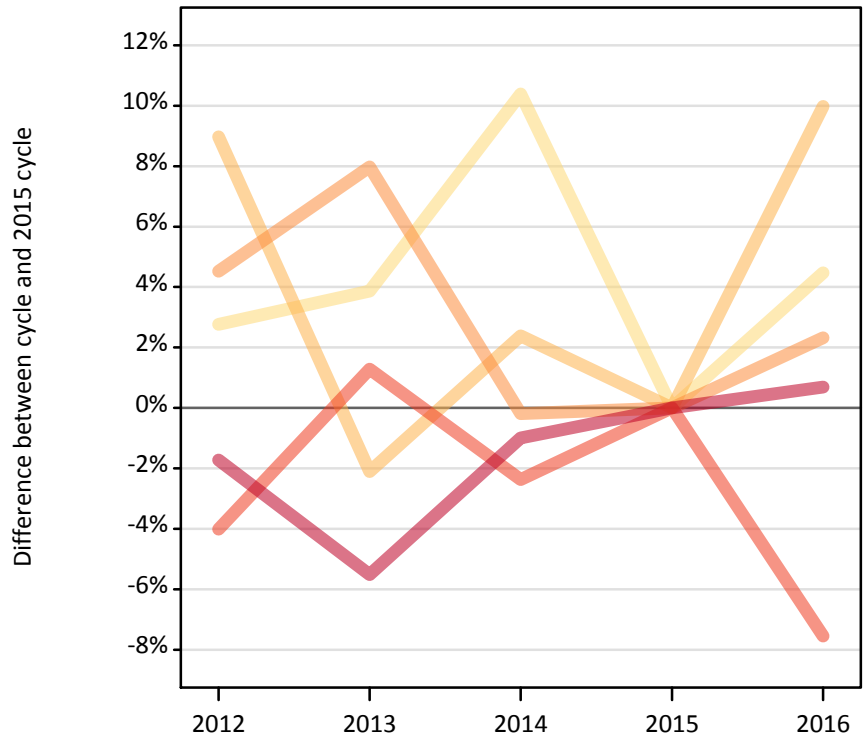
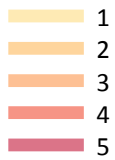
#### D.4.15 Applicants by domicile and number of applications made : Scotland

Difference between cycle and 2015 cycle

Domicile and number of applications made by applicant		2012	2013	2014	2015	2016
Scotland	1	-15%	-11%	-13%	0%	-4%
	2	-15%	-18%	-20%	0%	-4%
	3	-17%	-15%	-20%	0%	-0%
	4	-6%	-9%	-6%	0%	2%
	5	-13%	-11%	-6%	0%	2%
	All	-13%	-11%	-9%	0%	1%

#### D.4.16 Applicants by domicile and number of applications made : Wales

Difference between cycle and 2015 cycle



#### D.4.17 Applicants by domicile and number of applications made : Wales

Domicile and number of applications made by applicant		2012	2013	2014	2015	2016
Wales	1	1,860	1,880	2,000	1,810	1,890
	2	1,190	1,070	1,120	1,090	1,200
	3	1,660	1,720	1,590	1,590	1,630
	4	2,470	2,600	2,510	2,570	2,380
	5	13,700	13,170	13,800	13,940	14,030
	All	20,880	20,440	21,010	21,000	21,130

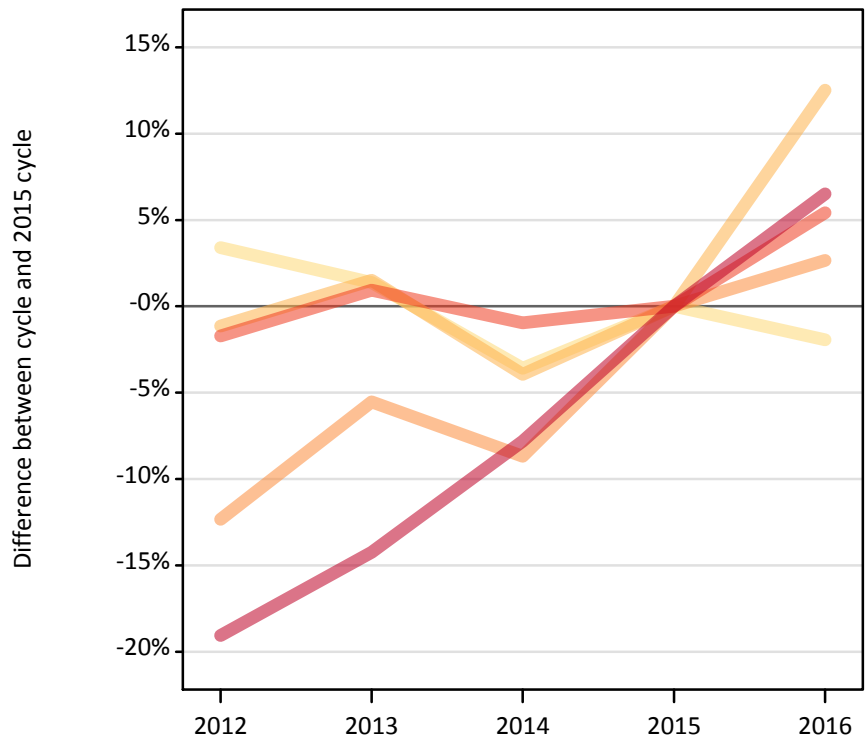
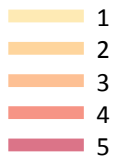
#### D.4.18 Applicants by domicile and number of applications made : Wales

Difference between cycle and 2015 cycle

Domicile and number of applications made by applicant		2012	2013	2014	2015	2016
Wales	1	3%	4%	10%	0%	4%
	2	9%	-2%	2%	0%	10%
	3	5%	8%	-0%	0%	2%
	4	-4%	1%	-2%	0%	-8%
	5	-2%	-6%	-1%	0%	1%
	All	-1%	-3%	0%	0%	1%

#### D.4.19 Applicants by domicile and number of applications made : EU (excluding UK)

Difference between cycle and 2015 cycle



#### D.4.20 Applicants by domicile and number of applications made : EU (excluding UK)

Domicile and number of applications made by applicant		2012	2013	2014	2015	2016
EU (excluding UK)	1	3,140	3,080	2,930	3,030	2,980
	2	1,380	1,420	1,340	1,400	1,570
	3	1,590	1,710	1,650	1,810	1,860
	4	3,270	3,360	3,290	3,330	3,510
	5	26,830	28,430	30,560	33,150	35,310
	All	36,210	37,990	39,780	42,720	45,220

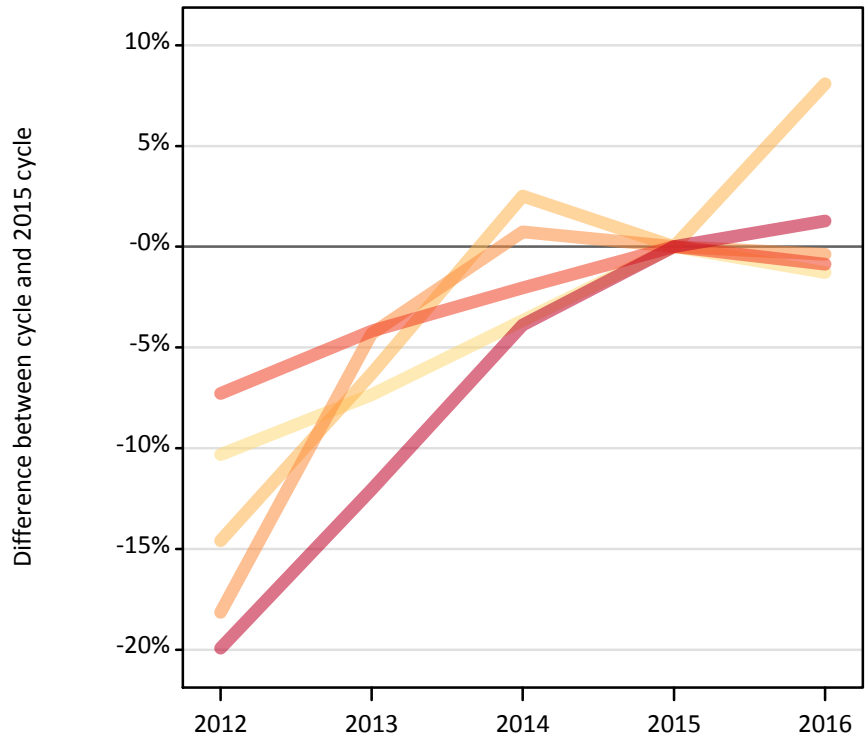
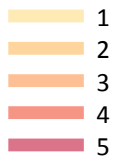
#### D.4.21 Applicants by domicile and number of applications made : EU (excluding UK)

Difference between cycle and 2015 cycle

Domicile and number of applications made by applicant		2012	2013	2014	2015	2016
EU (excluding UK)	1	3%	1%	-4%	0%	-2%
	2	-1%	2%	-4%	0%	13%
	3	-12%	-6%	-9%	0%	3%
	4	-2%	1%	-1%	0%	5%
	5	-19%	-14%	-8%	0%	7%
	All	-15%	-11%	-7%	0%	6%

#### D.4.22 Applicants by domicile and number of applications made : Not EU

Difference between cycle and 2015 cycle



#### D.4.23 Applicants by domicile and number of applications made : Not EU

Domicile and number of applications made by applicant		2012	2013	2014	2015	2016
Not EU	1	3,230	3,340	3,470	3,610	3,560
	2	1,290	1,410	1,550	1,510	1,630
	3	1,990	2,330	2,450	2,440	2,430
	4	3,780	3,910	4,000	4,080	4,040
	5	32,340	35,520	38,820	40,390	40,900
	All	42,640	46,510	50,290	52,020	52,560

#### D.4.24 Applicants by domicile and number of applications made : Not EU

Difference between cycle and 2015 cycle

Domicile and number of applications made by applicant		2012	2013	2014	2015	2016
Not EU	1	-10%	-7%	-4%	0%	-1%
	2	-15%	-6%	3%	0%	8%
	3	-18%	-4%	1%	0%	-0%
	4	-7%	-4%	-2%	0%	-1%
	5	-20%	-12%	-4%	0%	1%
	All	-18%	-11%	-3%	0%	1%



#### D.4.25 Technical notes and definitions

Applicants have been able to submit applications for all 2016 courses since early September.

Applicants who submit their applications to UCAS by the January deadline are considered as 'on time' applicants for the large majority of courses offered through UCAS.

This statistical release covers all Main Scheme applicants who submit their applications to UCAS by the January deadline, including those who have applied for courses with a 15 October deadline. Counts of RPAs (records of prior acceptance) are not included.

Counts of the number of applicants reported have been rounded to the nearest 10 applicants, this may result in instances where totals do not equal the sum of the components. Proportional changes have been rounded to the nearest whole percentage point.

The values reported against subject groups in the 2015 cycle have been restated from those which appeared in the equivalent report in 2015.

##### Age

This statistical release uses country-specific age definitions which align with the cut off points for school/college cohorts within the different administrations of the UK. For England and Wales ages are defined on the 31 August, for Northern Ireland on the 1 July and for Scotland on the 28 February the following year. Defining ages in this way matches the assignment of children to school cohorts. For applicants outside of the UK the cohort cut off for England and Wales has been used.

##### Applicant

A person who has made an application in the UCAS system during the cycle reported (including applications for deferred entry). Records of prior acceptance (RPAs) are excluded.

##### Application

An application to a course at a provider made by an applicant in the UCAS main scheme. Applicants may make up to five main scheme applications.

##### Country of provider

An applicant may be counted once for each provider country they have applied to in the main scheme. If an applicant has applied to providers in multiple countries then the applicant is counted once within each country of provider applied to.

This statistical release excludes a small number of applications to a provider based in the EU.

##### Domicile

Declared area of permanent residence. The Channel Islands and the Isle of Man have been assigned as 'Not EU'.

##### First time applicant

An applicant that did not apply to the UCAS scheme in the previous cycle.

##### Main scheme

The main UCAS application scheme through which up to five providers/courses can be applied to. This opens in September and closes to new applications on 30 June the following year.

##### Reapplicant

An applicant that applied to the UCAS scheme in the previous cycle.

#### **D.4.26 Technical notes and definitions: continued**

##### **Subject group**

The JACS3 classification used to classify courses into subject groups.

##### **Tariff group of provider**

Providers are grouped as higher, medium or lower tariff based on their average levels of attainment of their accepted applicants (summarised through UCAS Tariff points) in recent cycles. Each group of providers accounted for around a third of all UK 18 year old acceptances in recent cycles.