

## B06 Bangor University

**Cycle years:** 2010 - 2015

**Cycle Reference Point:** End of Cycle

**Applicant coverage:** UK domiciled

**Reporting groups:** Sex, POLAR3, ethnic group

**Applicant statistics:** June deadline applicants, placed June deadline applicants, all placed applicants, June deadline applicants per 10,000 population, placed June deadline applicants per 10,000 population, all placed applicants per 10,000 population

**Application statistics:** June deadline applications, offers, offer rate, average offer rate, percentage point difference between offer rate and average offer rate, contribution of group to the average offer rate

**Non-disclosure controls:** To avoid the disclosure of information about any individual the following measures are taken

- Applicants, placed applicants, applications and offers are rounded to the nearest 5.
- Applicants/placed applicants per 10,000 population figures are reported as 0 if the applicant/placed applicant figures are rounded to 0.
- All statistics related to the offer rate are not reported when the number of applications for a group is less than 10. The percentage point difference between the offer rate and the average offer rate is not reported when the number of applications for a group is less than 50.
- Offer rates are reported as 0% if there are fewer than 5 offers, and 100% if the number of offers is within 5 of the number of applications. When the offer rate is reported as 0% or 100%, it is reported in italics.

### Contents:

18 year old applicants:	P.1
18 year old applications:	P.2
18 year old applicants by sex:	P.3
18 year old applications by sex:	P.4
18 year old applicants by POLAR3 quintile:	P.7
18 year old applications by POLAR3 quintile:	P.8
18 year old applicants by ethnic group:	P.11
18 year old applications by ethnic group:	P.12
Applicants (all ages):	P.15
Applications (all ages):	P.16
Applicants (all ages) by sex:	P.17
Applications (all ages) by sex:	P.18
Applicants (all ages) by POLAR3 quintile:	P.19
Applications (all ages) by POLAR3 quintile:	P.20
Applicants (all ages) by ethnic group:	P.21
Applications (all ages) by ethnic group:	P.22

## P.1 18 year old applicants

Statistic	2010	2011	2012	2013	2014	2015
June deadline applicants	4,865	5,880	5,305	5,500	4,830	5,140
Placed June deadline applicants	1,190	1,165	1,215	1,145	1,100	1,225
All placed applicants	1,330	1,245	1,335	1,310	1,310	1,440
June deadline applicants per 10,000 population	61.6	76.4	68.6	72.3	64.1	67.1
Placed June deadline applicants per 10,000	15.0	15.1	15.7	15.0	14.6	16.0
All placed applicants per 10,000 population	16.8	16.2	17.3	17.2	17.4	18.8

## P.2 18 year old applications

Statistic	2010	2011	2012	2013	2014	2015
June deadline applications	5,550	6,570	5,930	6,105	5,375	5,685
Offers	5,080	5,640	5,125	5,265	5,070	5,355
Offer rate	91.5%	85.8%	86.4%	86.2%	94.3%	94.2%

### P.3 18 year old applicants by sex

Statistic	Sex	2010	2011	2012	2013	2014	2015
June deadline applicants	Men	2,025	2,485	2,165	2,320	1,945	2,050
	Women	2,840	3,400	3,140	3,185	2,885	3,090
Placed June deadline applicants	Men	490	500	535	495	470	490
	Women	700	665	680	650	630	735
All placed applicants	Men	560	530	600	575	565	590
	Women	770	715	740	735	750	850
June deadline applicants per 10,000 population	Men	50.4	63.1	54.6	59.4	50.3	52.3
	Women	73.2	90.2	83.3	85.9	78.8	82.7
Placed June deadline applicants per 10,000 population	Men	12.2	12.7	13.5	12.7	12.1	12.5
	Women	18.0	17.7	18.0	17.6	17.3	19.7
All placed applicants per 10,000 population	Men	13.9	13.4	15.1	14.7	14.5	15.1
	Women	19.8	19.0	19.6	19.9	20.4	22.7

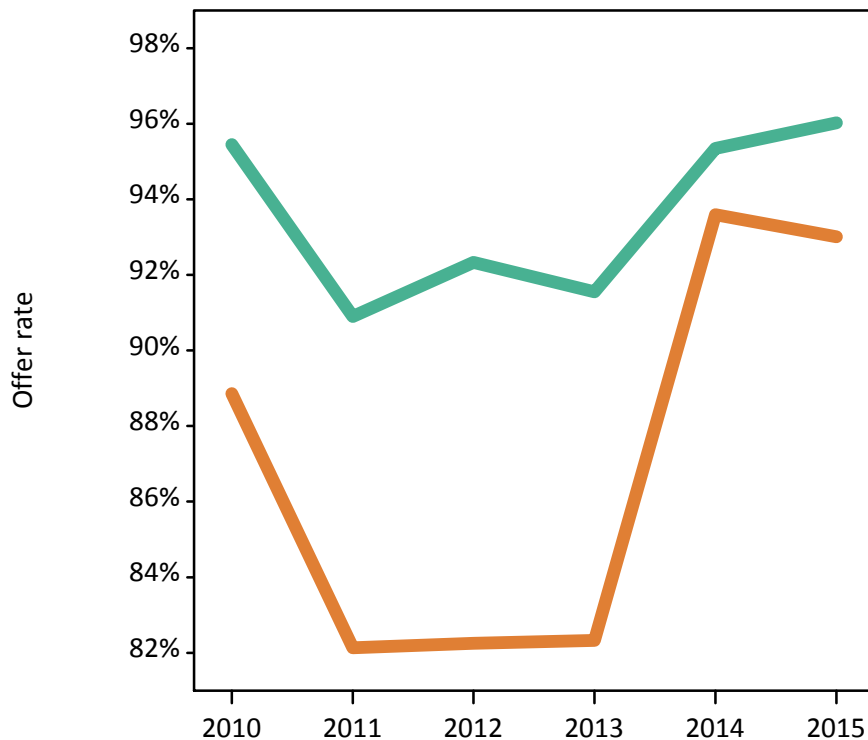
### P.4 18 year old applications by sex

Statistic	Sex	2010	2011	2012	2013	2014	2015
June deadline applications	Men	2,265	2,770	2,440	2,570	2,195	2,265
	Women	3,285	3,800	3,495	3,535	3,185	3,415
Offers	Men	2,160	2,515	2,250	2,350	2,090	2,175
	Women	2,920	3,120	2,875	2,910	2,980	3,180
Offer rate	Men	95.5%	90.9%	92.3%	91.6%	95.4%	96.0%
	Women	88.9%	82.1%	82.3%	82.3%	93.6%	93.0%
Average offer rate	Men	95.4%	91.2%	92.7%	91.9%	95.2%	96.1%
	Women	88.9%	81.9%	82.0%	82.1%	93.7%	93.0%
Percentage point difference between offer rate and average offer rate	Men	0.1	-0.3	-0.3	-0.4	0.1	-0.0
	Women	-0.0	0.2	0.2	0.3	-0.1	0.0
Contribution of group to the average offer rate	Men	0.594	0.589	0.580	0.609	0.599	0.590
	Women	0.720	0.700	0.707	0.716	0.724	0.728

### P.5 18 year old offer rate by sex

Note: The line for a group is not plotted when that group made fewer than 10 applications in any of the years from 2010-2015.

Men  
Women



### P.6 Percentage point difference between 18 year old offer rate and average offer rate by sex

Note: The line for a group is not plotted when that group made fewer than 50 applications in any of the years from 2010-2015.

Men  
Women



## P.7 18 year old applicants by POLAR3 quintile

Statistic	POLAR3 quintile	2010	2011	2012	2013	2014	2015
June deadline applicants	Quintile 1	595	710	655	740	705	755
	Quintile 2	815	980	955	935	785	865
	Quintile 3	935	1,165	1,030	1,060	905	1,060
	Quintile 4	1,260	1,470	1,300	1,330	1,200	1,245
	Quintile 5	1,250	1,545	1,360	1,435	1,230	1,200
Placed June deadline applicants	Quintile 1	135	120	160	160	160	185
	Quintile 2	185	210	185	200	170	205
	Quintile 3	230	240	230	220	225	250
	Quintile 4	315	295	320	270	255	310
	Quintile 5	310	300	320	295	290	275
All placed applicants	Quintile 1	150	130	175	180	190	215
	Quintile 2	200	215	205	220	195	225
	Quintile 3	260	255	245	260	275	300
	Quintile 4	360	315	350	305	300	360
	Quintile 5	350	325	360	345	345	340
June deadline applicants per 10,000 population	Quintile 1	40.1	49.5	46.0	53.0	50.8	53.9
	Quintile 2	53.1	65.3	63.6	63.5	53.6	58.3
	Quintile 3	58.9	75.8	66.6	69.4	60.1	69.2
	Quintile 4	79.1	93.9	81.8	85.0	78.0	79.6
	Quintile 5	73.8	93.3	81.0	86.8	75.5	71.8
Placed June deadline applicants per 10,000 population	Quintile 1	9.2	8.2	11.2	11.6	11.4	13.1
	Quintile 2	12.2	13.9	12.4	13.4	11.5	13.7
	Quintile 3	14.6	15.7	14.8	14.4	15.0	16.2
	Quintile 4	19.9	18.8	20.0	17.2	16.5	19.9
	Quintile 5	18.4	18.2	19.1	18.0	17.8	16.4
All placed applicants per 10,000 population	Quintile 1	10.1	9.0	12.4	13.1	13.7	15.4
	Quintile 2	13.1	14.3	13.7	14.8	13.4	15.0
	Quintile 3	16.4	16.7	15.7	17.1	18.4	19.5
	Quintile 4	22.6	20.2	21.9	19.6	19.6	22.9
	Quintile 5	20.7	19.7	21.4	20.8	21.0	20.3

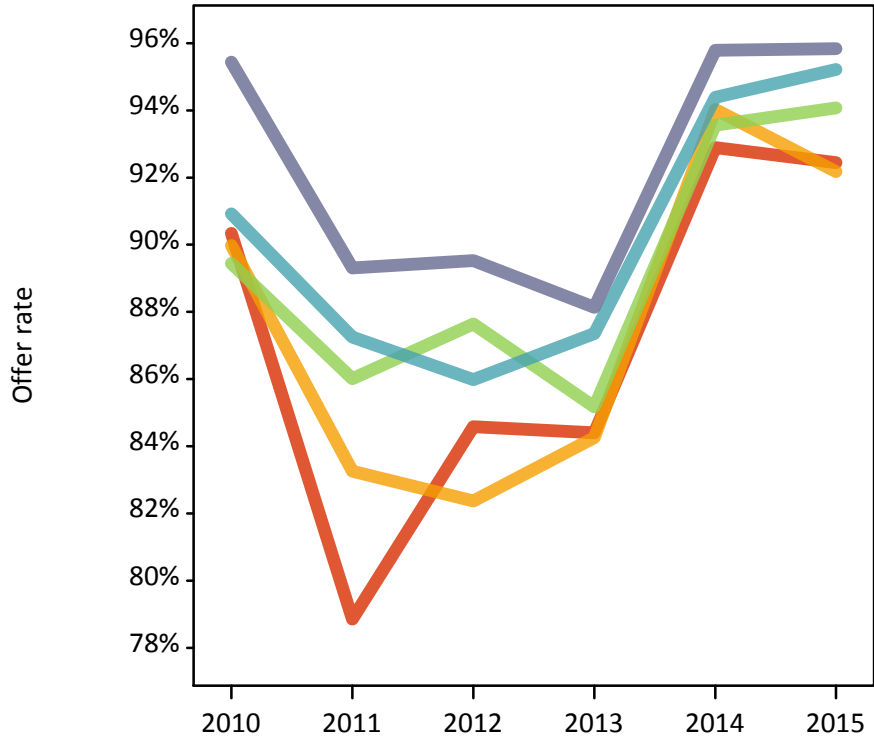
## P.8 18 year old applications by POLAR3 quintile

Statistic	POLAR3 quintile	2010	2011	2012	2013	2014	2015
June deadline applications	Quintile 1	675	820	735	825	790	835
	Quintile 2	920	1,085	1,055	1,040	870	960
	Quintile 3	1,100	1,310	1,150	1,160	1,025	1,180
	Quintile 4	1,465	1,665	1,485	1,495	1,335	1,400
	Quintile 5	1,380	1,685	1,500	1,575	1,355	1,295
Offers	Quintile 1	610	645	620	700	730	770
	Quintile 2	825	905	870	880	820	885
	Quintile 3	985	1,125	1,005	990	960	1,110
	Quintile 4	1,330	1,450	1,275	1,305	1,260	1,335
	Quintile 5	1,320	1,505	1,340	1,390	1,295	1,240
Offer rate	Quintile 1	90.3%	78.9%	84.6%	84.4%	92.9%	92.4%
	Quintile 2	90.0%	83.3%	82.4%	84.3%	94.0%	92.2%
	Quintile 3	89.4%	86.0%	87.6%	85.2%	93.6%	94.1%
	Quintile 4	90.9%	87.3%	86.0%	87.4%	94.4%	95.2%
	Quintile 5	95.4%	89.3%	89.5%	88.1%	95.8%	95.8%
Average offer rate	Quintile 1	89.3%	80.8%	84.6%	83.4%	93.4%	92.4%
	Quintile 2	91.1%	83.6%	84.3%	84.4%	94.0%	93.9%
	Quintile 3	90.2%	86.7%	86.7%	84.6%	93.7%	94.1%
	Quintile 4	90.8%	86.1%	85.8%	87.6%	94.3%	94.4%
	Quintile 5	94.7%	88.7%	89.0%	88.7%	95.5%	95.5%
Percentage point difference between offer rate and average offer rate	Quintile 1	1.0	-1.9	-0.1	1.0	-0.5	0.1
	Quintile 2	-1.1	-0.4	-2.0	-0.2	0.1	-1.7
	Quintile 3	-0.7	-0.6	0.9	0.6	-0.1	-0.0
	Quintile 4	0.1	1.1	0.2	-0.3	0.1	0.8
	Quintile 5	0.7	0.6	0.5	-0.6	0.3	0.3
Contribution of group to the average offer rate	Quintile 1	0.277	0.256	0.257	0.248	0.269	0.279
	Quintile 2	0.301	0.270	0.289	0.285	0.278	0.285
	Quintile 3	0.335	0.313	0.299	0.305	0.298	0.311
	Quintile 4	0.384	0.351	0.349	0.345	0.364	0.361
	Quintile 5	0.385	0.369	0.363	0.372	0.364	0.351

### P.9 18 year old offer rate by POLAR3 quintile

Note: The line for a group is not plotted when that group made fewer than 10 applications in any of the years from 2010-2015.

- Quintile 1
- Quintile 2
- Quintile 3
- Quintile 4
- Quintile 5



### P.10 Percentage point difference between 18 year old offer rate and average offer rate by POLAR3 quintile

Note: The line for a group is not plotted when that group made fewer than 50 applications in any of the years from 2010-2015.

- Quintile 1
- Quintile 2
- Quintile 3
- Quintile 4
- Quintile 5



## P.11 18 year old applicants by ethnic group

Statistic	Ethnic group	2010	2011	2012	2013	2014	2015
June deadline applicants	Asian	70	85	105	120	125	135
	Black	25	40	40	75	60	70
	Mixed	70	135	85	120	115	130
	White	4,675	5,590	5,055	5,165	4,500	4,765
	Other	10	10	10	15	20	20
Placed June deadline applicants	Asian	15	20	20	25	25	15
	Black	5	0	10	10	5	10
	Mixed	15	20	15	20	15	30
	White	1,145	1,115	1,165	1,085	1,055	1,160
	Other	0	0	0	0	0	5
All placed applicants	Asian	20	20	25	35	30	25
	Black	5	5	10	10	10	10
	Mixed	20	25	20	30	20	40
	White	1,270	1,190	1,275	1,235	1,250	1,355
	Other	0	5	0	0	0	5
June deadline applicants per 10,000 population	Asian	11.2	13.3	16.5	17.9	18.3	18.8
	Black	9.9	14.6	13.5	24.6	20.1	22.3
	Mixed	30.2	54.9	32.2	43.6	39.3	41.8
	White	69.7	86.3	78.3	82.1	72.9	76.5
	Other	13.0	13.6	13.6	15.4	20.4	19.7
Placed June deadline applicants per 10,000 population	Asian	2.7	2.9	2.9	3.6	3.4	2.4
	Black	2.7	0.0	2.8	3.0	1.0	2.5
	Mixed	6.9	9.1	6.5	7.4	5.9	9.7
	White	17.0	17.2	18.1	17.3	17.1	18.6
	Other	0.0	0.0	0.0	0.0	0.0	3.1
All placed applicants per 10,000 population	Asian	3.4	3.2	3.9	5.0	4.6	3.5
	Black	2.7	1.1	3.6	3.7	3.3	3.8
	Mixed	9.1	9.9	7.7	10.4	6.6	12.7
	White	18.9	18.4	19.8	19.6	20.2	21.7
	Other	0.0	3.7	0.0	0.0	0.0	4.2



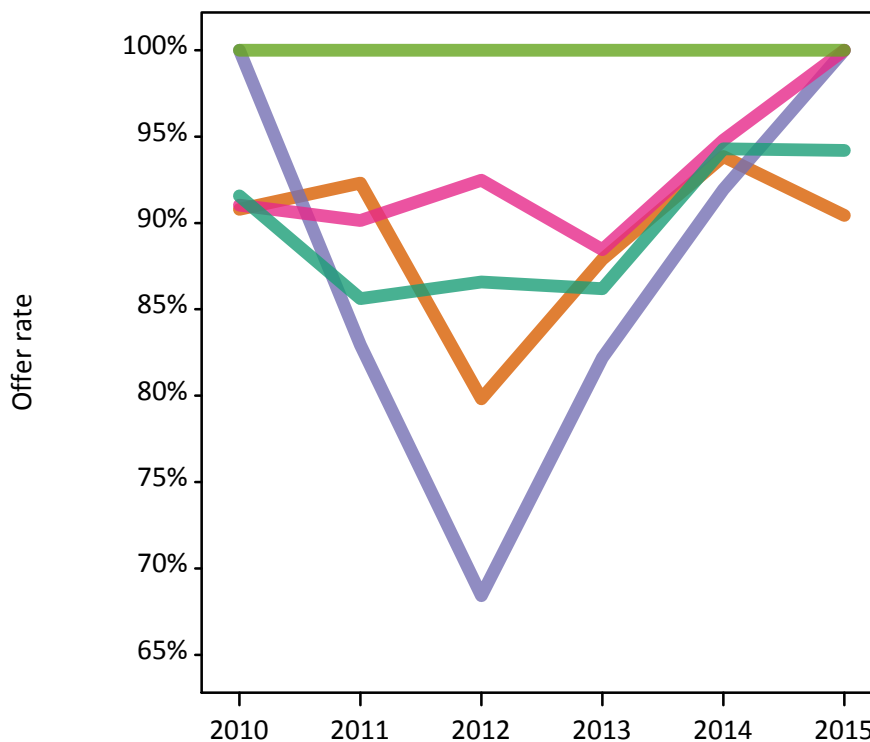
## P.12 18 year old applications by ethnic group

Statistic	Ethnic group	2010	2011	2012	2013	2014	2015
June deadline applications	Asian	75	90	115	125	130	135
	Black	25	40	40	75	60	70
	Mixed	80	140	95	130	115	135
	White	5,340	6,260	5,660	5,750	5,035	5,300
	Other	10	10	10	20	20	20
Offers	Asian	70	85	90	110	120	125
	Black	25	35	25	60	55	70
	Mixed	70	130	85	115	110	130
	White	4,890	5,360	4,900	4,955	4,745	4,995
	Other	10	10	10	15	20	20
Offer rate	Asian	90.8%	92.3%	79.8%	87.9%	93.8%	90.4%
	Black	100.0%	82.9%	68.4%	82.2%	91.9%	100.0%
	Mixed	91.0%	90.1%	92.5%	88.5%	94.8%	100.0%
	White	91.6%	85.6%	86.6%	86.2%	94.3%	94.2%
	Other	100.0%	100.0%	100.0%	100.0%	100.0%	100.0%
Average offer rate	Asian	90.1%	92.0%	83.1%	85.9%	94.1%	93.0%
	Black	87.3%	84.5%	76.4%	85.2%	93.9%	96.9%
	Mixed	90.2%	90.9%	90.5%	90.4%	95.0%	96.5%
	White	91.6%	85.6%	86.5%	86.1%	94.3%	94.1%
	Other	83.0%	94.3%	85.1%	88.8%	97.9%	96.9%
Percentage point difference between offer rate and average offer rate	Asian	0.7	0.3	-3.3	2.0	-0.2	-2.5
	Black	N/A	N/A	N/A	-3.0	-2.0	3.1
	Mixed	0.8	-0.8	1.9	-2.0	-0.2	3.5
	White	-0.0	0.1	0.1	0.1	0.0	0.1
	Other	N/A	N/A	N/A	N/A	N/A	N/A
Contribution of group to the average offer rate	Asian	0.224	0.249	0.161	0.230	0.166	0.201
	Black	0.195	0.168	0.124	0.185	0.170	0.212
	Mixed	0.194	0.142	0.146	0.213	0.159	0.165
	White	0.970	0.961	0.962	0.954	0.946	0.945
	Other	0.137	0.125	0.246	0.205	0.167	0.110

### P.13 18 year old offer rate by ethnic group

Note: The line for a group is not plotted when that group made fewer than 10 applications in any of the years from 2010-2015.

- Asian
- Black
- Mixed
- White
- Other



### P.14 Percentage point difference between 18 year old offer rate and average offer rate by ethnic group

Note: The line for a group is not plotted when that group made fewer than 50 applications in any of the years from 2010-2015.

- Asian
- Black
- Mixed
- White
- Other



### P.15 Applicants (all ages)

Statistic	2010	2011	2012	2013	2014	2015
June deadline applicants	7,660	9,210	8,270	8,815	8,105	8,335
Placed June deadline applicants	1,970	1,970	1,940	1,920	1,975	2,065
All placed applicants	2,235	2,140	2,225	2,265	2,380	2,465

### P.16 Applications (all ages)

Statistic	2010	2011	2012	2013	2014	2015
June deadline applications	8,935	10,600	9,520	10,100	9,290	9,510
Offers	7,450	8,175	7,375	7,735	8,045	8,285
Offer rate	83.4%	77.2%	77.5%	76.6%	86.6%	87.1%

### P.17 Applicants (all ages) by sex

Statistic	Sex	2010	2011	2012	2013	2014	2015
June deadline applicants	Men	3,300	3,985	3,365	3,720	3,320	3,370
	Women	4,360	5,220	4,900	5,090	4,785	4,965
Placed June deadline applicants	Men	870	875	870	835	830	845
	Women	1,100	1,095	1,070	1,085	1,145	1,220
All placed applicants	Men	1,010	945	1,010	1,005	1,010	1,030
	Women	1,225	1,195	1,215	1,260	1,370	1,435

### P.18 Applications (all ages) by sex

Statistic	Sex	2010	2011	2012	2013	2014	2015
June deadline applications	Men	3,765	4,555	3,865	4,245	3,830	3,815
	Women	5,165	6,040	5,655	5,850	5,465	5,695
Offers	Men	3,345	3,770	3,300	3,565	3,375	3,425
	Women	4,110	4,410	4,075	4,165	4,670	4,860
Offer rate	Men	88.8%	82.7%	85.4%	84.0%	88.1%	89.8%
	Women	79.5%	73.0%	72.0%	71.2%	85.5%	85.3%

### P.19 Applicants (all ages) by POLAR3 quintile

Statistic	POLAR3 quintile	2010	2011	2012	2013	2014	2015
June deadline applicants	Quintile 1	1,100	1,275	1,215	1,355	1,320	1,340
	Quintile 2	1,320	1,650	1,595	1,560	1,425	1,480
	Quintile 3	1,465	1,845	1,585	1,715	1,530	1,700
	Quintile 4	1,930	2,205	1,910	2,050	1,930	1,985
	Quintile 5	1,830	2,205	1,945	2,115	1,895	1,805
Placed June deadline applicants	Quintile 1	260	260	295	295	315	365
	Quintile 2	320	365	330	335	360	350
	Quintile 3	385	405	365	370	400	420
	Quintile 4	520	480	475	460	440	500
	Quintile 5	475	460	470	450	455	425
All placed applicants	Quintile 1	290	280	335	340	385	440
	Quintile 2	355	390	380	385	425	395
	Quintile 3	440	435	415	455	495	500
	Quintile 4	605	525	545	535	530	595
	Quintile 5	540	500	540	545	535	525

### P.20 Applications (all ages) by POLAR3 quintile

Statistic	POLAR3 quintile	2010	2011	2012	2013	2014	2015
June deadline applications	Quintile 1	1,295	1,530	1,420	1,590	1,520	1,560
	Quintile 2	1,530	1,885	1,820	1,795	1,625	1,690
	Quintile 3	1,760	2,150	1,845	1,955	1,775	1,965
	Quintile 4	2,275	2,545	2,230	2,370	2,220	2,265
	Quintile 5	2,050	2,455	2,180	2,375	2,140	2,005
Offers	Quintile 1	1,015	1,070	1,040	1,150	1,285	1,310
	Quintile 2	1,245	1,420	1,325	1,305	1,375	1,440
	Quintile 3	1,430	1,615	1,430	1,470	1,540	1,705
	Quintile 4	1,910	2,010	1,760	1,870	1,935	2,000
	Quintile 5	1,835	2,045	1,800	1,925	1,900	1,800
Offer rate	Quintile 1	78.3%	69.8%	73.2%	72.5%	84.5%	84.2%
	Quintile 2	81.4%	75.3%	73.0%	72.8%	84.7%	85.3%
	Quintile 3	81.4%	75.1%	77.4%	75.2%	86.7%	86.9%
	Quintile 4	83.8%	78.9%	78.9%	78.8%	87.2%	88.2%
	Quintile 5	89.5%	83.2%	82.7%	81.2%	88.8%	89.9%

## P.21 Applicants (all ages) by ethnic group

Statistic	Ethnic group	2010	2011	2012	2013	2014	2015
June deadline applicants	Asian	155	165	205	220	245	265
	Black	90	115	115	195	170	175
	Mixed	135	215	150	190	180	210
	White	7,220	8,655	7,745	8,150	7,435	7,595
	Other	20	20	30	30	45	50
Placed June deadline applicants	Asian	35	30	35	35	55	45
	Black	15	10	20	15	15	30
	Mixed	30	40	30	40	35	50
	White	1,870	1,875	1,845	1,820	1,860	1,920
	Other	0	5	5	5	5	10
All placed applicants	Asian	45	35	50	55	75	60
	Black	15	15	25	20	30	40
	Mixed	35	50	35	50	45	70
	White	2,100	2,025	2,085	2,125	2,210	2,265
	Other	5	5	10	5	10	10

## P.22 Applications (all ages) by ethnic group

Statistic	Ethnic group	2010	2011	2012	2013	2014	2015
June deadline applications	Asian	165	180	230	240	260	285
	Black	90	115	115	205	180	180
	Mixed	150	230	170	205	190	220
	White	8,460	10,005	8,945	9,380	8,580	8,730
	Other	25	20	35	35	50	55
Offers	Asian	140	140	150	175	215	240
	Black	55	60	60	110	130	135
	Mixed	125	185	145	165	170	200
	White	7,080	7,740	6,970	7,240	7,465	7,630
	Other	15	15	25	25	40	45
Offer rate	Asian	84.3%	76.7%	65.7%	72.4%	83.1%	84.1%
	Black	60.7%	51.7%	52.6%	53.4%	71.7%	74.4%
	Mixed	85.8%	80.8%	86.9%	81.1%	88.5%	90.4%
	White	83.7%	77.4%	77.9%	77.2%	87.0%	87.4%
	Other	68.0%	68.2%	70.6%	72.7%	74.5%	83.6%

## Technical Notes and Definitions

### UCAS undergraduate scheme

#### Adjustment

Adjustment allows applicants who have met and exceeded the terms of their conditional firm offer to seek and find a place at another provider whilst keeping their place at their original firm choice provider.

#### Clearing

Clearing is a route for applicants that are not placed and holding no offers to find a place on courses with vacancies.

#### Cycle year

The UCAS application cycle which runs from September to October the following year. For example the 2015 cycle runs from September 2014 through to October 2015.

#### End of cycle

The point in the cycle to which the numbers in this report refer, and the point at which the cycle is closed such that no more applications or offers can be made, and no more applicants can be placed. Numbers reported at the end of cycle exclude information on a small number of applicants who cancelled during the cycle.

#### Extra

Applicants who are unsuccessful in obtaining an offer or decline all offers may be eligible to apply through Extra, where they can apply to one further course at a time. Extra operates from 25 February until early July. It provides applicants who are eligible the possibility of obtaining an offer before exam results are published and Clearing starts.

#### June 30 deadline

The deadline for main scheme applications. Applicants who apply after this date will go directly into Clearing.

#### Record of Prior Acceptance (RPA)

RPA is an acceptance route used when a provider informs UCAS of applicants it has accepted outside of the normal application process (e.g. individuals who have applied directly to the provider).

### Reporting groups

#### Ethnic group

High level grouping of ethnic origin as declared by the applicant: 'White', 'Black', 'Asian', 'Mixed', 'Other', 'Unknown'. Applicants who declare themselves as 'Unknown' ethnic origin are not reported in these tables, but are included in the associated csv data file.

#### POLAR3 quintile

Developed by HEFCE, POLAR3 classifies small areas across the UK into five groups according to their level of young participation in Higher Education. Each of these groups represents around 20 per cent of young people and is ranked from Quintile 1 (areas with the lowest young participation rates, considered as the most disadvantaged) to Quintile 5 (highest young participation rates, considered most advantaged). POLAR3 is based on the participation rates of young people between 2005 and 2009 who entered Higher Education between 2005-06 and 2010-11, therefore is most suitable for applicants aged 19 and under. These groups are assigned using the postcode declared by the applicant at the time of their application. If a UK postcode is invalid, considered unsafe for measurement or there is no link to Census geography possible then the applicant is not assigned to a quintile. Applicants with no POLAR3 quintile are not reported.

#### Sex

Sex as declared by the applicant.

### **SIMD quintile**

Scottish index of multiple deprivation (SIMD) for 2012 identifies small area concentrations of multiple deprivation across all of Scotland, providing a relative measure of deprivation amongst 6505 small areas (data zones) based on 7 socio-economic domains. These small areas are classified into five groups ranked from Quintile 1 (considered the most deprived) to Quintile 5 (considered least deprived), with equal populations in each quintile. Quintiles are assigned using the postcode declared by the applicant, applicants declaring invalid postcodes are classified as 'Not assigned' and are not reported.

SIMD is only defined for applicants domiciled in Scotland, therefore any applicants domiciled outside of Scotland cannot be assigned to an SIMD quintile and so are not reported for this measure.

SIMD is only reported for providers in Scotland. Application and entry rates by SIMD are reported in the 2015 End of Cycle Report and the 2016 cycle January deadline application rate report.

### **Statistics reported in the tables**

#### **All placed applicants**

The number of applicants placed for entry into higher education at the provider through one of their choices, including any choices made through Extra, or via Adjustment, Clearing or RPA.

#### **All placed applicants per 10,000 population**

The number of total UK domiciled 18 year old placed applicants for entry into higher education at the provider divided by the number of UK 18 year olds in the population, multiplied by 10,000. This gives the number of 18 year olds, for every 10,000 in the population, that were placed at the provider through one of their choices, including any choices made through Extra, or via Adjustment, Clearing or RPA. It is an alternative way of expressing the entry rate to a provider. By referencing the underlying population this statistic shows how the number of placed applicants is changing in relation to the available pool of potential applicants and so gives the chance that somebody from the group will be placed at a provider.

This statistic is only reported for 18 year olds.

#### **Average offer rate**

The offer rate that you might expect if the predicted grades and subject choice of applicants were the only factors that influenced whether an applicant was made an offer by the provider. The average offer rate is calculated by dividing applicants according to their specific combination of grades (for A levels the best three predicted grades are used, for BTECs, International Baccalaureate and Scottish Highers and Advanced Highers, predicted grades along with any grades already achieved upon applying are used) and subject choice. For each combination the number of main scheme offers is divided by the number of main scheme applications, to give an overall offer rate. This is then multiplied by the number of applications made by the group for which the average offer rate is being calculated (for example POLAR3 quintile 1), to give an average number of offers for that group. These average number of offers are then added together across all combinations of predicted grade and subject and divided by the number of main scheme applications from the group to give the average offer rate.

The average offer rate does not attempt to control for any other factors that may play a part in the decision to make an offer, such as the subject of the qualifications studied, their relevance to a course, or the grade in each subject; higher numbers of A levels being studied; the exact profile of grades predicted; personal statements; teacher references; interviews; or any other criteria (such as work experience or portfolios) that may be part of the admissions decision.

This statistic is only reported for 18 year olds.



### Contribution of group to the average offer rate

The way in which the average offer rate is defined means that the pattern of application and offers of a group (for example POLAR3 quintile 1) will always contribute, in part, to the average offer rate for that group. When this contribution is large, the average offer rate will mainly reflect the patterns for the group, meaning that the value of the average offer rate will be similar to the offer rate, the percentage point difference statistic will be small, and any real difference between the offer rate and what might be expected given the predicted grades and subject choices of the applicants will be difficult to detect.

Values of the contribution of group to the average offer rate range between 0 and 1. The closer the value is to 1 the greater the contribution a group makes to its own average offer rate.

This statistic is only reported for 18 year olds.

### Placed June deadline applicants

An applicant who has been placed for entry into higher education at the provider through a June deadline application.

### Placed June deadline applicants per 10,000 population

The number of UK domiciled 18 year old placed June deadline applicants at the provider divided by the number of UK 18 year olds in the population, multiplied by 10,000. This gives the number of 18 year olds, for every 10,000 in the population, that were placed at the provider through one of their June deadline applications. It is an alternative way of expressing the entry rate to a provider, but for placed June deadline applicants only. By referencing the underlying population this statistic shows how the number of placed June deadline applicants is changing in relation to the available pool of potential 18 year old applicants and so gives the chance that somebody from the group will be placed at a provider through a June deadline application.

This statistic is only reported for 18 year olds.

### June deadline applications

An application (or choice) to a course in higher education to the provider that is made by the June 30 deadline. Each applicant can make up to five choices this way. The number of June deadline applications does not include choices made through the following routes: Clearing, Extra, Adjustment and RPAs. Applications made to October deadline courses received after the October deadline are not included in these statistics.

### June deadline applicants

The number of applicants that made at least one application to the provider by the June 30 deadline.

### June deadline applicants per 10,000 population

The number of UK domiciled 18 year old June deadline applicants to the provider divided by the number of UK 18 year olds in the population, multiplied by 10,000. This gives the number of 18 year olds, for every 10,000 in the population, who applied by the June 30 deadline. It is equivalent to the application rate. By referencing the underlying population this statistic shows how the number of June deadline applicants is changing in relation to the available pool of potential 18 year old applicants and so gives the chance that somebody from the group will apply to a provider by the June 30 deadline.

This statistic is only reported for 18 year olds.

### Offers

An offer is defined as a provider's decision in response to an application to offer a place to an applicant, often subject to the applicant satisfying academic and/or other criteria, via a June deadline application (i.e. does not cover choices made through the following routes: Clearing, Extra, Adjustment and RPAs).

### Offer rate

The number of offers made divided by the number of June deadline applications. This gives the proportion of all June deadline applications to the provider that received an offer.

### Percentage point difference between offer rate and average offer rate

The offer rate minus the average offer rate.

The percentage point difference can be compared to the expected range of statistical variation resulting from the calculation of the average offer rate using the Average Offer Rate Lookup Table. Where the value of the percentage point difference lies outside of this range, the percentage point difference may be considered to represent a real difference between the offer rate and the average offer rate.

### Other definitions

#### Age

This analysis uses country-specific age definitions that align with the cut off points for school and college cohorts within the different administrations of the UK. For England and Wales, ages are defined on the 31 August, for Northern Ireland on the 1 July and for Scotland on the 28 February the following year. Defining ages in this way matches the assignment of children to school cohorts. For applicants outside of the UK a cohort cut off of 31 August has been used.

#### Provider

A higher education provider - a university or college.

#### UK domiciled

Declared area of permanent residence within England, Northern Ireland, Scotland and Wales. Applicants from the Channel Islands and Isle of Man are not included.