

B50 Bournemouth University

Cycle years: 2010 - 2015

Cycle Reference Point: End of Cycle

Applicant coverage: UK domiciled

Reporting groups: Sex, POLAR3, ethnic group

Applicant statistics: June deadline applicants, placed June deadline applicants, all placed applicants, June deadline applicants per 10,000 population, placed June deadline applicants per 10,000 population, all placed applicants per 10,000 population

Application statistics: June deadline applications, offers, offer rate, average offer rate, percentage point difference between offer rate and average offer rate, contribution of group to the average offer rate

Non-disclosure controls: To avoid the disclosure of information about any individual the following measures are taken

- Applicants, placed applicants, applications and offers are rounded to the nearest 5.
- Applicants/placed applicants per 10,000 population figures are reported as 0 if the applicant/placed applicant figures are rounded to 0.
- All statistics related to the offer rate are not reported when the number of applications for a group is less than 10. The percentage point difference between the offer rate and the average offer rate is not reported when the number of applications for a group is less than 50.
- Offer rates are reported as 0% if there are fewer than 5 offers, and 100% if the number of offers is within 5 of the number of applications. When the offer rate is reported as 0% or 100%, it is reported in italics.

Contents:

18 year old applicants:	P.1
18 year old applications:	P.2
18 year old applicants by sex:	P.3
18 year old applications by sex:	P.4
18 year old applicants by POLAR3 quintile:	P.7
18 year old applications by POLAR3 quintile:	P.8
18 year old applicants by ethnic group:	P.11
18 year old applications by ethnic group:	P.12
Applicants (all ages):	P.15
Applications (all ages):	P.16
Applicants (all ages) by sex:	P.17
Applications (all ages) by sex:	P.18
Applicants (all ages) by POLAR3 quintile:	P.19
Applications (all ages) by POLAR3 quintile:	P.20
Applicants (all ages) by ethnic group:	P.21
Applications (all ages) by ethnic group:	P.22

P.1 18 year old applicants

Statistic	2010	2011	2012	2013	2014	2015
June deadline applicants	12,435	10,405	9,080	9,450	10,300	10,270
Placed June deadline applicants	1,730	1,570	1,560	1,820	1,965	1,975
All placed applicants	1,855	2,005	1,895	1,980	2,155	2,300
June deadline applicants per 10,000 population	157.5	135.1	117.4	124.2	136.8	134.0
Placed June deadline applicants per 10,000	21.9	20.4	20.2	23.9	26.1	25.8
All placed applicants per 10,000 population	23.5	26.0	24.5	26.0	28.6	30.0

P.2 18 year old applications

Statistic	2010	2011	2012	2013	2014	2015
June deadline applications	13,295	10,995	9,575	9,910	10,780	10,670
Offers	8,390	6,815	6,380	7,865	8,840	8,335
Offer rate	63.1%	62.0%	66.6%	79.4%	82.0%	78.1%

P.3 18 year old applicants by sex

Statistic	Sex	2010	2011	2012	2013	2014	2015
June deadline applicants	Men	5,465	4,455	3,945	4,220	4,680	4,560
	Women	6,970	5,950	5,135	5,230	5,620	5,710
Placed June deadline applicants	Men	770	705	735	860	890	910
	Women	960	865	825	960	1,075	1,060
All placed applicants	Men	835	880	895	920	975	1,065
	Women	1,020	1,125	995	1,055	1,180	1,235
June deadline applicants per 10,000 population	Men	136.0	113.2	99.5	108.0	120.9	116.2
	Women	179.7	158.0	136.2	141.2	153.6	152.8
Placed June deadline applicants per 10,000 population	Men	19.2	17.9	18.5	22.0	23.0	23.2
	Women	24.8	23.0	21.9	26.0	29.4	28.4
All placed applicants per 10,000 population	Men	20.7	22.4	22.6	23.6	25.2	27.1
	Women	26.3	29.9	26.4	28.5	32.2	33.0

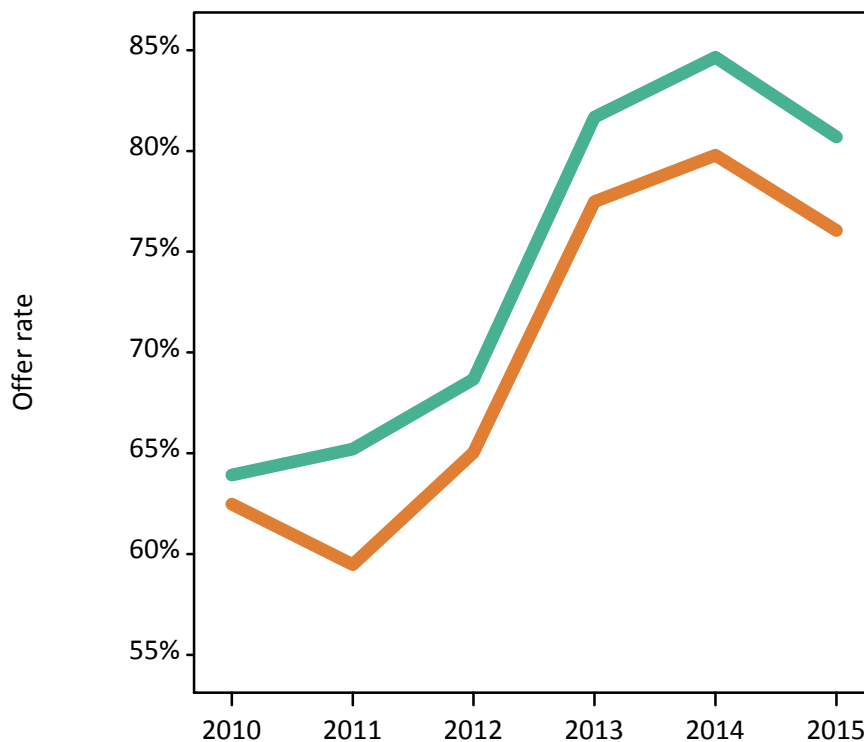
P.4 18 year old applications by sex

Statistic	Sex	2010	2011	2012	2013	2014	2015
June deadline applications	Men	5,905	4,775	4,205	4,505	4,950	4,805
	Women	7,390	6,220	5,370	5,405	5,830	5,860
Offers	Men	3,775	3,115	2,890	3,680	4,190	3,880
	Women	4,615	3,700	3,495	4,190	4,655	4,460
Offer rate	Men	63.9%	65.2%	68.7%	81.7%	84.6%	80.7%
	Women	62.5%	59.5%	65.0%	77.5%	79.8%	76.0%
Average offer rate	Men	64.7%	66.2%	69.5%	82.3%	85.2%	81.7%
	Women	61.9%	58.7%	64.4%	76.9%	79.3%	75.2%
Percentage point difference between offer rate and average offer rate	Men	-0.7	-1.0	-0.8	-0.7	-0.6	-1.0
	Women	0.6	0.7	0.7	0.6	0.5	0.8
Contribution of group to the average offer rate	Men	0.599	0.612	0.626	0.625	0.625	0.623
	Women	0.679	0.702	0.707	0.687	0.682	0.691

P.5 18 year old offer rate by sex

Note: The line for a group is not plotted when that group made fewer than 10 applications in any of the years from 2010-2015.

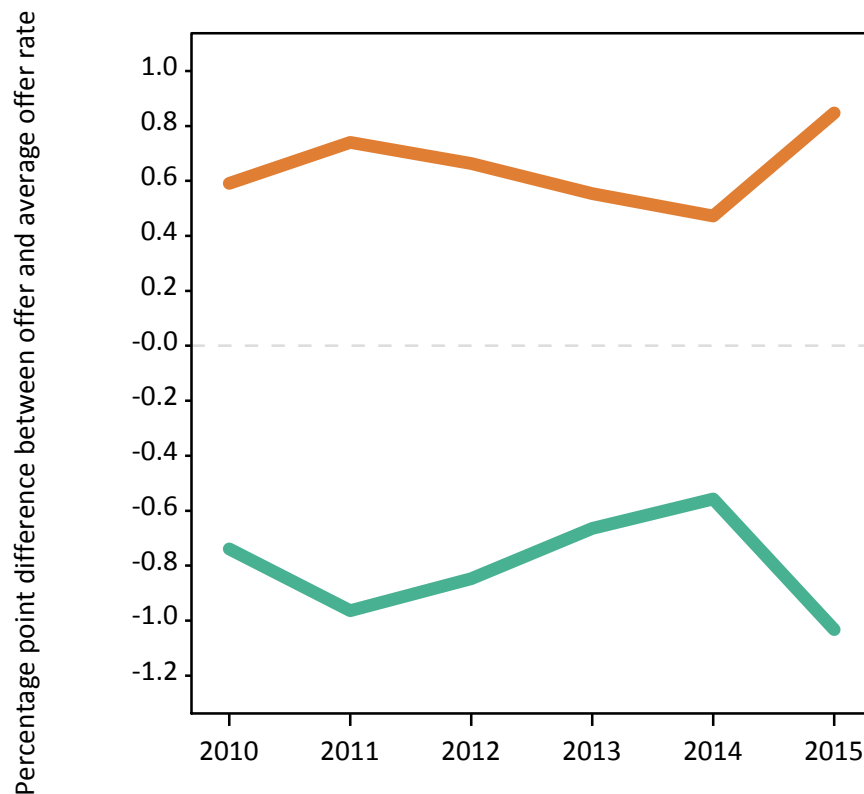
Men
Women



P.6 Percentage point difference between 18 year old offer rate and average offer rate by sex

Note: The line for a group is not plotted when that group made fewer than 50 applications in any of the years from 2010-2015.

Men
Women



P.7 18 year old applicants by POLAR3 quintile

Statistic	POLAR3 quintile	2010	2011	2012	2013	2014	2015
June deadline applicants	Quintile 1	1,210	1,080	935	955	1,110	1,150
	Quintile 2	1,810	1,465	1,330	1,420	1,595	1,560
	Quintile 3	2,455	2,105	1,875	1,845	2,055	2,055
	Quintile 4	3,135	2,595	2,270	2,345	2,480	2,505
	Quintile 5	3,805	3,140	2,655	2,865	3,045	2,975
Placed June deadline applicants	Quintile 1	160	140	160	170	210	225
	Quintile 2	220	210	210	260	290	305
	Quintile 3	370	320	330	350	390	360
	Quintile 4	445	400	380	420	485	475
	Quintile 5	530	495	480	615	585	605
All placed applicants	Quintile 1	175	165	180	185	220	255
	Quintile 2	235	250	255	285	310	350
	Quintile 3	395	395	400	375	425	420
	Quintile 4	465	525	470	475	535	550
	Quintile 5	580	670	590	660	660	720
June deadline applicants per 10,000 population	Quintile 1	81.6	75.1	65.7	68.7	79.6	82.2
	Quintile 2	117.8	97.4	88.8	96.3	109.1	105.1
	Quintile 3	154.5	136.9	121.4	121.1	136.7	133.7
	Quintile 4	196.7	165.8	143.1	150.0	161.0	159.9
	Quintile 5	224.5	189.8	158.0	173.2	186.6	177.8
Placed June deadline applicants per 10,000 population	Quintile 1	10.9	9.7	11.2	12.3	15.1	16.1
	Quintile 2	14.4	14.0	14.1	17.5	20.0	20.7
	Quintile 3	23.1	20.9	21.4	22.9	25.8	23.4
	Quintile 4	27.9	25.6	23.9	27.0	31.5	30.3
	Quintile 5	31.3	30.0	28.5	37.1	35.9	36.1
All placed applicants per 10,000 population	Quintile 1	11.7	11.5	12.6	13.1	16.0	18.1
	Quintile 2	15.2	16.6	16.9	19.2	21.1	23.4
	Quintile 3	25.0	25.6	25.9	24.6	28.3	27.4
	Quintile 4	29.3	33.5	29.6	30.2	34.6	35.1
	Quintile 5	34.2	40.6	35.0	39.8	40.3	43.1

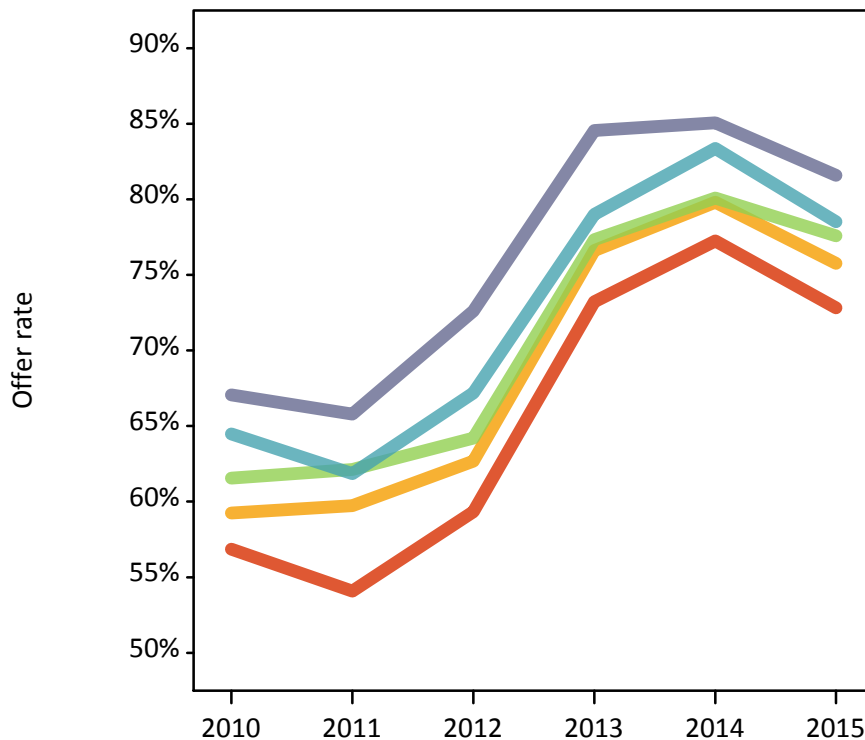
P.8 18 year old applications by POLAR3 quintile

Statistic	POLAR3 quintile	2010	2011	2012	2013	2014	2015
June deadline applications	Quintile 1	1,320	1,150	1,000	1,010	1,175	1,210
	Quintile 2	1,945	1,555	1,400	1,495	1,675	1,625
	Quintile 3	2,635	2,245	2,005	1,945	2,155	2,130
	Quintile 4	3,365	2,745	2,385	2,455	2,580	2,590
	Quintile 5	4,005	3,280	2,765	2,985	3,180	3,090
Offers	Quintile 1	750	625	595	740	905	880
	Quintile 2	1,155	930	880	1,145	1,335	1,230
	Quintile 3	1,625	1,395	1,290	1,505	1,725	1,650
	Quintile 4	2,170	1,695	1,605	1,940	2,150	2,030
	Quintile 5	2,685	2,155	2,005	2,520	2,705	2,520
Offer rate	Quintile 1	56.9%	54.1%	59.3%	73.2%	77.3%	72.8%
	Quintile 2	59.2%	59.7%	62.7%	76.6%	79.8%	75.8%
	Quintile 3	61.5%	62.1%	64.2%	77.3%	80.1%	77.6%
	Quintile 4	64.5%	61.8%	67.2%	79.0%	83.4%	78.5%
	Quintile 5	67.1%	65.8%	72.6%	84.5%	85.1%	81.6%
Average offer rate	Quintile 1	58.4%	55.0%	60.9%	74.9%	78.5%	74.1%
	Quintile 2	60.7%	60.4%	63.8%	76.3%	79.4%	75.5%
	Quintile 3	61.5%	61.9%	64.2%	78.0%	80.3%	77.0%
	Quintile 4	64.2%	61.4%	67.3%	79.0%	82.8%	78.6%
	Quintile 5	66.1%	65.6%	71.4%	83.7%	85.2%	81.6%
Percentage point difference between offer rate and average offer rate	Quintile 1	-1.6	-1.0	-1.6	-1.7	-1.2	-1.3
	Quintile 2	-1.5	-0.7	-1.1	0.3	0.4	0.2
	Quintile 3	0.1	0.2	0.1	-0.7	-0.2	0.6
	Quintile 4	0.2	0.5	-0.1	-0.0	0.6	-0.1
	Quintile 5	1.0	0.1	1.2	0.8	-0.1	0.0
Contribution of group to the average offer rate	Quintile 1	0.174	0.188	0.182	0.186	0.182	0.181
	Quintile 2	0.200	0.212	0.224	0.213	0.212	0.216
	Quintile 3	0.246	0.260	0.278	0.253	0.253	0.251
	Quintile 4	0.293	0.302	0.304	0.301	0.285	0.287
	Quintile 5	0.362	0.372	0.364	0.368	0.360	0.355

P.9 18 year old offer rate by POLAR3 quintile

Note: The line for a group is not plotted when that group made fewer than 10 applications in any of the years from 2010-2015.

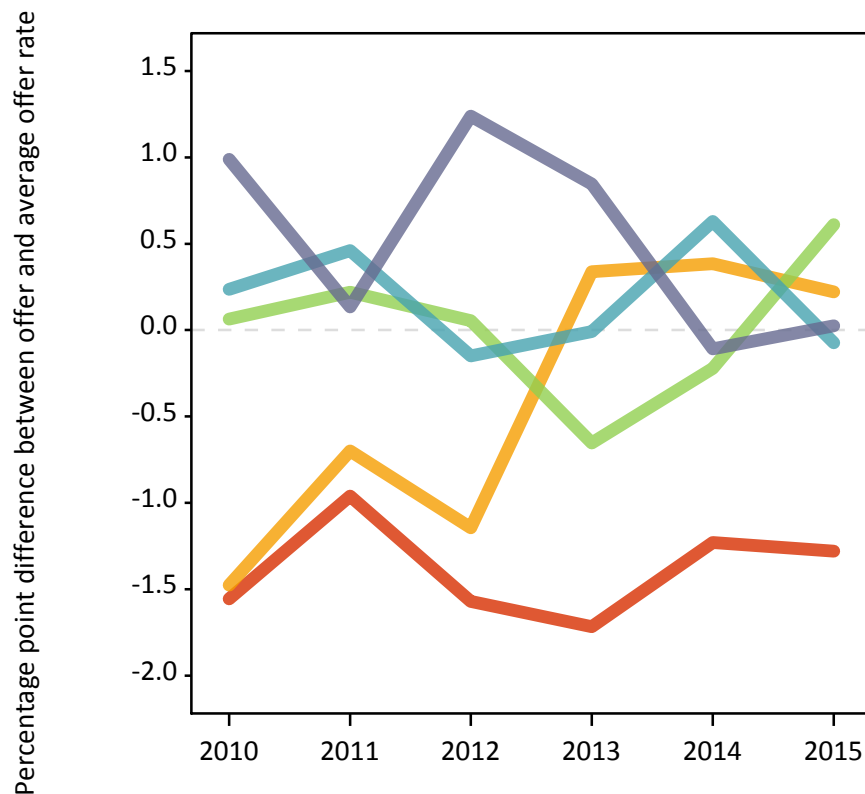
- Quintile 1
- Quintile 2
- Quintile 3
- Quintile 4
- Quintile 5



P.10 Percentage point difference between 18 year old offer rate and average offer rate by POLAR3 quintile

Note: The line for a group is not plotted when that group made fewer than 50 applications in any of the years from 2010-2015.

- Quintile 1
- Quintile 2
- Quintile 3
- Quintile 4
- Quintile 5



P.11 18 year old applicants by ethnic group

Statistic	Ethnic group	2010	2011	2012	2013	2014	2015
June deadline applicants	Asian	375	335	345	410	490	475
	Black	375	340	360	420	495	505
	Mixed	410	390	320	375	440	435
	White	11,170	9,245	7,970	8,160	8,785	8,720
	Other	60	60	70	65	70	100
Placed June deadline applicants	Asian	40	40	65	60	65	70
	Black	35	30	50	65	70	90
	Mixed	55	65	45	65	80	80
	White	1,590	1,425	1,390	1,615	1,735	1,710
	Other	5	5	10	10	15	20
All placed applicants	Asian	50	70	90	65	75	100
	Black	35	45	80	75	90	125
	Mixed	65	90	60	70	90	100
	White	1,695	1,780	1,650	1,750	1,880	1,945
	Other	5	10	15	10	20	20
June deadline applicants per 10,000 population	Asian	60.8	53.2	53.3	61.9	72.4	67.4
	Black	144.0	125.1	127.5	141.1	163.6	158.7
	Mixed	177.4	160.2	123.2	139.1	153.3	141.4
	White	166.6	142.8	123.4	129.7	142.4	139.9
	Other	75.3	76.5	78.0	73.9	77.4	101.8
Placed June deadline applicants per 10,000 population	Asian	6.5	6.5	10.0	8.9	9.6	10.0
	Black	13.0	10.2	18.1	22.6	23.1	28.9
	Mixed	24.2	27.2	17.3	23.7	28.5	25.6
	White	23.7	22.0	21.5	25.7	28.1	27.5
	Other	7.8	6.2	11.3	12.1	14.0	19.7
All placed applicants per 10,000 population	Asian	7.9	11.1	13.7	9.9	11.1	14.4
	Black	14.1	16.8	28.8	25.9	29.0	39.3
	Mixed	28.1	36.3	23.0	25.9	30.6	33.1
	White	25.2	27.5	25.5	27.8	30.5	31.2
	Other	7.8	13.6	14.7	13.2	19.3	22.8

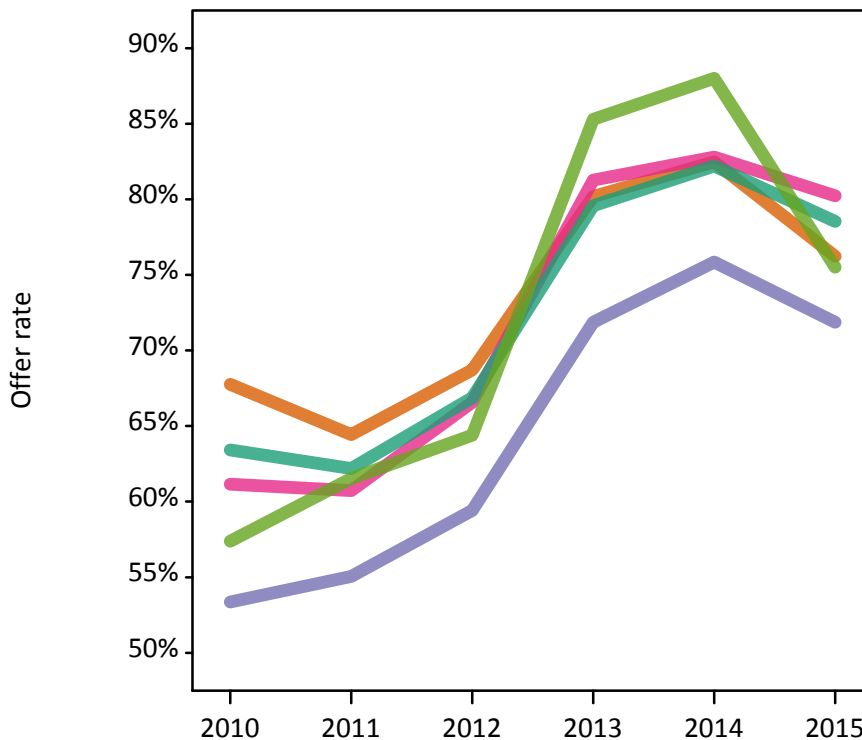
P.12 18 year old applications by ethnic group

Statistic	Ethnic group	2010	2011	2012	2013	2014	2015
June deadline applications	Asian	395	345	360	435	510	490
	Black	385	355	370	425	500	510
	Mixed	435	415	330	395	460	445
	White	11,975	9,780	8,425	8,570	9,220	9,090
	Other	60	65	75	70	75	100
Offers	Asian	265	220	245	350	420	370
	Black	205	195	220	305	380	370
	Mixed	265	250	220	320	380	355
	White	7,595	6,085	5,635	6,820	7,580	7,140
	Other	35	40	45	60	65	75
Offer rate	Asian	67.8%	64.4%	68.7%	80.2%	82.5%	76.2%
	Black	53.4%	55.1%	59.4%	71.9%	75.8%	71.9%
	Mixed	61.1%	60.7%	66.6%	81.3%	82.8%	80.2%
	White	63.4%	62.2%	66.9%	79.6%	82.2%	78.5%
	Other	57.4%	61.5%	64.4%	85.3%	88.0%	75.5%
Average offer rate	Asian	71.2%	64.9%	70.5%	82.0%	83.1%	78.5%
	Black	60.1%	59.6%	63.4%	77.5%	80.0%	74.8%
	Mixed	59.5%	64.8%	67.2%	82.3%	85.1%	79.6%
	White	63.1%	61.8%	66.6%	79.2%	81.9%	78.2%
	Other	63.7%	62.9%	66.3%	79.1%	86.1%	80.4%
Percentage point difference between offer rate and average offer rate	Asian	-3.4	-0.5	-1.7	-1.8	-0.6	-2.2
	Black	-6.7	-4.6	-4.0	-5.6	-4.1	-2.9
	Mixed	1.6	-4.1	-0.6	-1.0	-2.3	0.6
	White	0.3	0.4	0.3	0.4	0.4	0.3
	Other	-6.3	-1.4	-1.9	6.2	1.9	-4.9
Contribution of group to the average offer rate	Asian	0.092	0.120	0.156	0.128	0.132	0.113
	Black	0.090	0.118	0.127	0.140	0.122	0.119
	Mixed	0.094	0.111	0.109	0.118	0.109	0.101
	White	0.909	0.901	0.894	0.879	0.869	0.866
	Other	0.103	0.081	0.109	0.071	0.060	0.095

P.13 18 year old offer rate by ethnic group

Note: The line for a group is not plotted when that group made fewer than 10 applications in any of the years from 2010-2015.

- Asian
- Black
- Mixed
- White
- Other



P.14 Percentage point difference between 18 year old offer rate and average offer rate by ethnic group

Note: The line for a group is not plotted when that group made fewer than 50 applications in any of the years from 2010-2015.

- Asian
- Black
- Mixed
- White
- Other



P.15 Applicants (all ages)

Statistic	2010	2011	2012	2013	2014	2015
June deadline applicants	23,245	21,095	18,025	18,405	20,200	19,900
Placed June deadline applicants	3,590	3,350	3,035	3,580	3,830	3,815
All placed applicants	3,820	4,025	3,635	3,925	4,175	4,450

P.16 Applications (all ages)

Statistic	2010	2011	2012	2013	2014	2015
June deadline applications	25,395	22,955	19,395	19,545	21,490	21,045
Offers	13,475	11,735	10,415	13,025	14,750	13,785
Offer rate	53.1%	51.1%	53.7%	66.6%	68.6%	65.5%

P.17 Applicants (all ages) by sex

Statistic	Sex	2010	2011	2012	2013	2014	2015
June deadline applicants	Men	10,565	9,290	7,740	8,260	9,020	8,785
	Women	12,680	11,805	10,290	10,145	11,180	11,115
Placed June deadline applicants	Men	1,605	1,585	1,375	1,695	1,760	1,755
	Women	1,990	1,765	1,655	1,885	2,070	2,060
All placed applicants	Men	1,725	1,875	1,685	1,845	1,930	2,070
	Women	2,095	2,145	1,950	2,085	2,245	2,380

P.18 Applications (all ages) by sex

Statistic	Sex	2010	2011	2012	2013	2014	2015
June deadline applications	Men	11,660	10,170	8,325	8,885	9,690	9,390
	Women	13,730	12,785	11,065	10,660	11,800	11,650
Offers	Men	6,305	5,615	4,880	6,355	7,305	6,695
	Women	7,170	6,120	5,535	6,665	7,445	7,090
Offer rate	Men	54.1%	55.2%	58.6%	71.5%	75.4%	71.3%
	Women	52.2%	47.9%	50.0%	62.5%	63.1%	60.9%

P.19 Applicants (all ages) by POLAR3 quintile

Statistic	POLAR3 quintile	2010	2011	2012	2013	2014	2015
June deadline applicants	Quintile 1	2,730	2,685	2,390	2,300	2,630	2,640
	Quintile 2	3,675	3,340	2,980	2,980	3,385	3,255
	Quintile 3	4,725	4,325	3,830	3,750	4,215	4,080
	Quintile 4	5,715	5,140	4,250	4,460	4,735	4,760
	Quintile 5	6,340	5,550	4,530	4,875	5,200	5,105
Placed June deadline applicants	Quintile 1	440	390	390	425	500	510
	Quintile 2	570	520	450	545	600	620
	Quintile 3	765	725	675	735	780	765
	Quintile 4	900	850	700	845	920	900
	Quintile 5	910	865	810	1,020	1,025	1,005
All placed applicants	Quintile 1	465	440	445	460	530	575
	Quintile 2	600	590	540	600	640	715
	Quintile 3	815	845	805	805	850	900
	Quintile 4	940	1,030	850	945	1,010	1,055
	Quintile 5	985	1,105	985	1,110	1,130	1,195

P.20 Applications (all ages) by POLAR3 quintile

Statistic	POLAR3 quintile	2010	2011	2012	2013	2014	2015
June deadline applications	Quintile 1	3,050	2,980	2,620	2,455	2,840	2,810
	Quintile 2	4,075	3,680	3,185	3,205	3,600	3,475
	Quintile 3	5,180	4,760	4,180	3,990	4,500	4,295
	Quintile 4	6,255	5,570	4,585	4,735	5,035	5,020
	Quintile 5	6,765	5,895	4,775	5,120	5,490	5,380
Offers	Quintile 1	1,440	1,320	1,185	1,395	1,725	1,630
	Quintile 2	2,050	1,795	1,545	2,020	2,325	2,160
	Quintile 3	2,685	2,400	2,180	2,545	3,005	2,765
	Quintile 4	3,355	2,875	2,515	3,225	3,505	3,310
	Quintile 5	3,920	3,315	2,955	3,810	4,165	3,880
Offer rate	Quintile 1	47.2%	44.2%	45.2%	56.9%	60.9%	58.0%
	Quintile 2	50.3%	48.8%	48.5%	63.0%	64.6%	62.1%
	Quintile 3	51.8%	50.4%	52.1%	63.9%	66.8%	64.4%
	Quintile 4	53.6%	51.6%	54.9%	68.1%	69.7%	66.0%
	Quintile 5	58.0%	56.2%	61.9%	74.4%	75.8%	72.2%

P.21 Applicants (all ages) by ethnic group

Statistic	Ethnic group	2010	2011	2012	2013	2014	2015
June deadline applicants	Asian	855	855	845	900	1,090	1,115
	Black	1,035	1,050	1,140	1,085	1,275	1,310
	Mixed	785	840	680	720	885	835
	White	20,315	18,120	15,120	15,470	16,695	16,325
	Other	155	140	180	175	185	215
Placed June deadline applicants	Asian	85	110	130	135	140	155
	Black	75	100	115	135	155	185
	Mixed	95	140	100	145	155	150
	White	3,300	2,970	2,660	3,130	3,335	3,275
	Other	25	15	25	25	30	30
All placed applicants	Asian	100	155	185	155	160	220
	Black	90	135	180	155	185	250
	Mixed	105	175	125	150	175	190
	White	3,485	3,515	3,100	3,415	3,595	3,735
	Other	25	25	35	30	40	40

P.22 Applications (all ages) by ethnic group

Statistic	Ethnic group	2010	2011	2012	2013	2014	2015
June deadline applications	Asian	925	905	895	955	1,140	1,165
	Black	1,105	1,110	1,200	1,135	1,320	1,340
	Mixed	845	930	715	765	935	860
	White	22,240	19,760	16,335	16,440	17,830	17,335
	Other	175	155	185	185	190	235
Offers	Asian	495	465	515	650	780	715
	Black	410	420	440	585	735	675
	Mixed	410	445	385	540	650	585
	White	12,030	10,280	8,955	11,085	12,410	11,610
	Other	85	75	95	125	135	130
Offer rate	Asian	53.6%	51.2%	57.4%	67.9%	68.4%	61.3%
	Black	36.9%	37.7%	36.6%	51.3%	55.6%	50.3%
	Mixed	48.4%	48.1%	53.8%	70.5%	69.6%	67.9%
	White	54.1%	52.0%	54.8%	67.4%	69.6%	67.0%
	Other	49.2%	49.0%	50.5%	67.2%	69.6%	56.7%

Technical Notes and Definitions

UCAS undergraduate scheme

Adjustment

Adjustment allows applicants who have met and exceeded the terms of their conditional firm offer to seek and find a place at another provider whilst keeping their place at their original firm choice provider.

Clearing

Clearing is a route for applicants that are not placed and holding no offers to find a place on courses with vacancies.

Cycle year

The UCAS application cycle which runs from September to October the following year. For example the 2015 cycle runs from September 2014 through to October 2015.

End of cycle

The point in the cycle to which the numbers in this report refer, and the point at which the cycle is closed such that no more applications or offers can be made, and no more applicants can be placed. Numbers reported at the end of cycle exclude information on a small number of applicants who cancelled during the cycle.

Extra

Applicants who are unsuccessful in obtaining an offer or decline all offers may be eligible to apply through Extra, where they can apply to one further course at a time. Extra operates from 25 February until early July. It provides applicants who are eligible the possibility of obtaining an offer before exam results are published and Clearing starts.

June 30 deadline

The deadline for main scheme applications. Applicants who apply after this date will go directly into Clearing.

Record of Prior Acceptance (RPA)

RPA is an acceptance route used when a provider informs UCAS of applicants it has accepted outside of the normal application process (e.g. individuals who have applied directly to the provider).

Reporting groups

Ethnic group

High level grouping of ethnic origin as declared by the applicant: 'White', 'Black', 'Asian', 'Mixed', 'Other', 'Unknown'. Applicants who declare themselves as 'Unknown' ethnic origin are not reported in these tables, but are included in the associated csv data file.

POLAR3 quintile

Developed by HEFCE, POLAR3 classifies small areas across the UK into five groups according to their level of young participation in Higher Education. Each of these groups represents around 20 per cent of young people and is ranked from Quintile 1 (areas with the lowest young participation rates, considered as the most disadvantaged) to Quintile 5 (highest young participation rates, considered most advantaged). POLAR3 is based on the participation rates of young people between 2005 and 2009 who entered Higher Education between 2005-06 and 2010-11, therefore is most suitable for applicants aged 19 and under. These groups are assigned using the postcode declared by the applicant at the time of their application. If a UK postcode is invalid, considered unsafe for measurement or there is no link to Census geography possible then the applicant is not assigned to a quintile. Applicants with no POLAR3 quintile are not reported.

Sex

Sex as declared by the applicant.

SIMD quintile

Scottish index of multiple deprivation (SIMD) for 2012 identifies small area concentrations of multiple deprivation across all of Scotland, providing a relative measure of deprivation amongst 6505 small areas (data zones) based on 7 socio-economic domains. These small areas are classified into five groups ranked from Quintile 1 (considered the most deprived) to Quintile 5 (considered least deprived), with equal populations in each quintile. Quintiles are assigned using the postcode declared by the applicant, applicants declaring invalid postcodes are classified as 'Not assigned' and are not reported.

SIMD is only defined for applicants domiciled in Scotland, therefore any applicants domiciled outside of Scotland cannot be assigned to an SIMD quintile and so are not reported for this measure.

SIMD is only reported for providers in Scotland. Application and entry rates by SIMD are reported in the 2015 End of Cycle Report and the 2016 cycle January deadline application rate report.

Statistics reported in the tables

All placed applicants

The number of applicants placed for entry into higher education at the provider through one of their choices, including any choices made through Extra, or via Adjustment, Clearing or RPA.

All placed applicants per 10,000 population

The number of total UK domiciled 18 year old placed applicants for entry into higher education at the provider divided by the number of UK 18 year olds in the population, multiplied by 10,000. This gives the number of 18 year olds, for every 10,000 in the population, that were placed at the provider through one of their choices, including any choices made through Extra, or via Adjustment, Clearing or RPA. It is an alternative way of expressing the entry rate to a provider. By referencing the underlying population this statistic shows how the number of placed applicants is changing in relation to the available pool of potential applicants and so gives the chance that somebody from the group will be placed at a provider.

This statistic is only reported for 18 year olds.

Average offer rate

The offer rate that you might expect if the predicted grades and subject choice of applicants were the only factors that influenced whether an applicant was made an offer by the provider. The average offer rate is calculated by dividing applicants according to their specific combination of grades (for A levels the best three predicted grades are used, for BTECs, International Baccalaureate and Scottish Highers and Advanced Highers, predicted grades along with any grades already achieved upon applying are used) and subject choice. For each combination the number of main scheme offers is divided by the number of main scheme applications, to give an overall offer rate. This is then multiplied by the number of applications made by the group for which the average offer rate is being calculated (for example POLAR3 quintile 1), to give an average number of offers for that group. These average number of offers are then added together across all combinations of predicted grade and subject and divided by the number of main scheme applications from the group to give the average offer rate.

The average offer rate does not attempt to control for any other factors that may play a part in the decision to make an offer, such as the subject of the qualifications studied, their relevance to a course, or the grade in each subject; higher numbers of A levels being studied; the exact profile of grades predicted; personal statements; teacher references; interviews; or any other criteria (such as work experience or portfolios) that may be part of the admissions decision.

This statistic is only reported for 18 year olds.

Contribution of group to the average offer rate

The way in which the average offer rate is defined means that the pattern of application and offers of a group (for example POLAR3 quintile 1) will always contribute, in part, to the average offer rate for that group. When this contribution is large, the average offer rate will mainly reflect the patterns for the group, meaning that the value of the average offer rate will be similar to the offer rate, the percentage point difference statistic will be small, and any real difference between the offer rate and what might be expected given the predicted grades and subject choices of the applicants will be difficult to detect.

Values of the contribution of group to the average offer rate range between 0 and 1. The closer the value is to 1 the greater the contribution a group makes to its own average offer rate.

This statistic is only reported for 18 year olds.

Placed June deadline applicants

An applicant who has been placed for entry into higher education at the provider through a June deadline application.

Placed June deadline applicants per 10,000 population

The number of UK domiciled 18 year old placed June deadline applicants at the provider divided by the number of UK 18 year olds in the population, multiplied by 10,000. This gives the number of 18 year olds, for every 10,000 in the population, that were placed at the provider through one of their June deadline applications. It is an alternative way of expressing the entry rate to a provider, but for placed June deadline applicants only. By referencing the underlying population this statistic shows how the number of placed June deadline applicants is changing in relation to the available pool of potential 18 year old applicants and so gives the chance that somebody from the group will be placed at a provider through a June deadline application.

This statistic is only reported for 18 year olds.

June deadline applications

An application (or choice) to a course in higher education to the provider that is made by the June 30 deadline. Each applicant can make up to five choices this way. The number of June deadline applications does not include choices made through the following routes: Clearing, Extra, Adjustment and RPAs. Applications made to October deadline courses received after the October deadline are not included in these statistics.

June deadline applicants

The number of applicants that made at least one application to the provider by the June 30 deadline.

June deadline applicants per 10,000 population

The number of UK domiciled 18 year old June deadline applicants to the provider divided by the number of UK 18 year olds in the population, multiplied by 10,000. This gives the number of 18 year olds, for every 10,000 in the population, who applied by the June 30 deadline. It is equivalent to the application rate. By referencing the underlying population this statistic shows how the number of June deadline applicants is changing in relation to the available pool of potential 18 year old applicants and so gives the chance that somebody from the group will apply to a provider by the June 30 deadline.

This statistic is only reported for 18 year olds.

Offers

An offer is defined as a provider's decision in response to an application to offer a place to an applicant, often subject to the applicant satisfying academic and/or other criteria, via a June deadline application (i.e. does not cover choices made through the following routes: Clearing, Extra, Adjustment and RPAs).

Offer rate

The number of offers made divided by the number of June deadline applications. This gives the proportion of all June deadline applications to the provider that received an offer.

Percentage point difference between offer rate and average offer rate

The offer rate minus the average offer rate.

The percentage point difference can be compared to the expected range of statistical variation resulting from the calculation of the average offer rate using the Average Offer Rate Lookup Table. Where the value of the percentage point difference lies outside of this range, the percentage point difference may be considered to represent a real difference between the offer rate and the average offer rate.

Other definitions

Age

This analysis uses country-specific age definitions that align with the cut off points for school and college cohorts within the different administrations of the UK. For England and Wales, ages are defined on the 31 August, for Northern Ireland on the 1 July and for Scotland on the 28 February the following year. Defining ages in this way matches the assignment of children to school cohorts. For applicants outside of the UK a cohort cut off of 31 August has been used.

Provider

A higher education provider - a university or college.

UK domiciled

Declared area of permanent residence within England, Northern Ireland, Scotland and Wales. Applicants from the Channel Islands and Isle of Man are not included.