

B80 Bristol University of the West of England

Cycle years: 2010 - 2015

Cycle Reference Point: End of Cycle

Applicant coverage: UK domiciled

Reporting groups: Sex, POLAR3, ethnic group

Applicant statistics: June deadline applicants, placed June deadline applicants, all placed applicants, June deadline applicants per 10,000 population, placed June deadline applicants per 10,000 population, all placed applicants per 10,000 population

Application statistics: June deadline applications, offers, offer rate, average offer rate, percentage point difference between offer rate and average offer rate, contribution of group to the average offer rate

Non-disclosure controls: To avoid the disclosure of information about any individual the following measures are taken

- Applicants, placed applicants, applications and offers are rounded to the nearest 5.
- Applicants/placed applicants per 10,000 population figures are reported as 0 if the applicant/placed applicant figures are rounded to 0.
- All statistics related to the offer rate are not reported when the number of applications for a group is less than 10. The percentage point difference between the offer rate and the average offer rate is not reported when the number of applications for a group is less than 50.
- Offer rates are reported as 0% if there are fewer than 5 offers, and 100% if the number of offers is within 5 of the number of applications. When the offer rate is reported as 0% or 100%, it is reported in italics.

Contents:

18 year old applicants:	P.1
18 year old applications:	P.2
18 year old applicants by sex:	P.3
18 year old applications by sex:	P.4
18 year old applicants by POLAR3 quintile:	P.7
18 year old applications by POLAR3 quintile:	P.8
18 year old applicants by ethnic group:	P.11
18 year old applications by ethnic group:	P.12
Applicants (all ages):	P.15
Applications (all ages):	P.16
Applicants (all ages) by sex:	P.17
Applications (all ages) by sex:	P.18
Applicants (all ages) by POLAR3 quintile:	P.19
Applications (all ages) by POLAR3 quintile:	P.20
Applicants (all ages) by ethnic group:	P.21
Applications (all ages) by ethnic group:	P.22

P.1 18 year old applicants

Statistic	2010	2011	2012	2013	2014	2015
June deadline applicants	13,440	13,045	11,700	11,495	10,630	10,630
Placed June deadline applicants	2,615	2,535	2,330	2,380	2,155	2,020
All placed applicants	2,775	3,030	2,670	2,700	2,420	2,270
June deadline applicants per 10,000 population	170.2	169.4	151.3	151.0	141.1	138.7
Placed June deadline applicants per 10,000	33.1	32.9	30.1	31.2	28.6	26.3
All placed applicants per 10,000 population	35.1	39.3	34.5	35.5	32.1	29.6

P.2 18 year old applications

Statistic	2010	2011	2012	2013	2014	2015
June deadline applications	14,700	14,125	12,610	12,345	11,220	11,260
Offers	11,275	10,185	9,380	9,390	8,595	8,425
Offer rate	76.7%	72.1%	74.4%	76.1%	76.6%	74.8%

P.3 18 year old applicants by sex

Statistic	Sex	2010	2011	2012	2013	2014	2015
June deadline applicants	Men	6,260	5,980	5,210	5,060	4,715	4,645
	Women	7,180	7,070	6,490	6,435	5,915	5,985
Placed June deadline applicants	Men	1,310	1,290	1,110	1,190	1,040	995
	Women	1,310	1,245	1,220	1,185	1,115	1,020
All placed applicants	Men	1,380	1,510	1,275	1,315	1,170	1,095
	Women	1,390	1,520	1,400	1,385	1,250	1,170
June deadline applicants per 10,000 population	Men	155.8	151.9	131.4	129.6	121.7	118.4
	Women	185.2	187.7	172.2	173.6	161.6	160.1
Placed June deadline applicants per 10,000 population	Men	32.6	32.8	27.9	30.5	26.9	25.4
	Women	33.7	33.1	32.4	32.0	30.5	27.3
All placed applicants per 10,000 population	Men	34.4	38.4	32.1	33.7	30.2	28.0
	Women	35.9	40.3	37.1	37.3	34.2	31.4

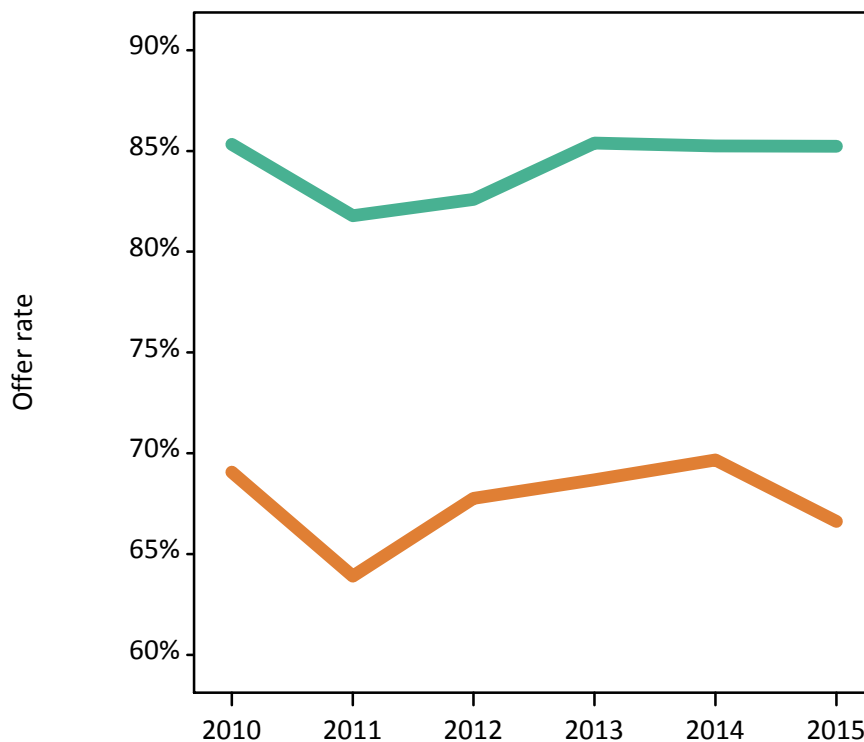
P.4 18 year old applications by sex

Statistic	Sex	2010	2011	2012	2013	2014	2015
June deadline applications	Men	6,905	6,485	5,625	5,455	5,010	4,960
	Women	7,790	7,640	6,985	6,890	6,205	6,295
Offers	Men	5,895	5,305	4,645	4,660	4,275	4,230
	Women	5,380	4,885	4,735	4,730	4,325	4,195
Offer rate	Men	85.3%	81.8%	82.6%	85.4%	85.3%	85.2%
	Women	69.1%	63.9%	67.8%	68.7%	69.7%	66.6%
Average offer rate	Men	85.9%	81.2%	83.0%	85.9%	85.9%	85.3%
	Women	68.6%	64.4%	67.5%	68.2%	69.2%	66.5%
Percentage point difference between offer rate and average offer rate	Men	-0.5	0.6	-0.4	-0.5	-0.6	-0.1
	Women	0.5	-0.5	0.3	0.4	0.5	0.1
Contribution of group to the average offer rate	Men	0.654	0.654	0.644	0.650	0.651	0.650
	Women	0.693	0.706	0.713	0.723	0.718	0.724

P.5 18 year old offer rate by sex

Note: The line for a group is not plotted when that group made fewer than 10 applications in any of the years from 2010-2015.

Men
Women



P.6 Percentage point difference between 18 year old offer rate and average offer rate by sex

Note: The line for a group is not plotted when that group made fewer than 50 applications in any of the years from 2010-2015.

Men
Women



P.7 18 year old applicants by POLAR3 quintile

Statistic	POLAR3 quintile	2010	2011	2012	2013	2014	2015
June deadline applicants	Quintile 1	1,475	1,500	1,325	1,345	1,340	1,390
	Quintile 2	2,070	2,025	1,785	1,880	1,725	1,745
	Quintile 3	2,595	2,455	2,280	2,225	2,030	2,015
	Quintile 4	3,350	3,170	2,880	2,790	2,495	2,525
	Quintile 5	3,920	3,875	3,405	3,235	3,015	2,925
Placed June deadline applicants	Quintile 1	305	325	310	295	280	280
	Quintile 2	390	360	320	360	355	320
	Quintile 3	520	485	455	430	425	385
	Quintile 4	640	610	550	580	485	490
	Quintile 5	760	745	685	705	610	540
All placed applicants	Quintile 1	320	380	345	340	320	315
	Quintile 2	415	420	380	405	390	365
	Quintile 3	545	575	505	485	470	435
	Quintile 4	680	720	640	670	540	545
	Quintile 5	810	925	795	795	695	600
June deadline applicants per 10,000 population	Quintile 1	99.7	104.5	92.9	96.5	96.4	99.1
	Quintile 2	134.6	134.6	119.1	127.7	117.8	117.6
	Quintile 3	163.2	159.5	147.8	146.0	135.0	131.2
	Quintile 4	210.5	202.3	181.5	178.5	162.0	161.2
	Quintile 5	231.2	234.2	202.8	195.6	185.0	174.8
Placed June deadline applicants per 10,000 population	Quintile 1	20.5	22.7	21.6	21.3	20.1	20.0
	Quintile 2	25.2	24.0	21.5	24.4	24.3	21.5
	Quintile 3	32.6	31.6	29.5	28.3	28.3	25.1
	Quintile 4	40.2	39.0	34.8	37.1	31.5	31.3
	Quintile 5	44.8	44.9	40.8	42.6	37.3	32.1
All placed applicants per 10,000 population	Quintile 1	21.6	26.3	24.3	24.3	22.9	22.6
	Quintile 2	26.9	28.1	25.3	27.4	26.7	24.6
	Quintile 3	34.1	37.5	32.8	31.9	31.4	28.3
	Quintile 4	42.7	46.0	40.3	42.9	35.1	34.9
	Quintile 5	47.7	55.8	47.3	48.1	42.7	36.0

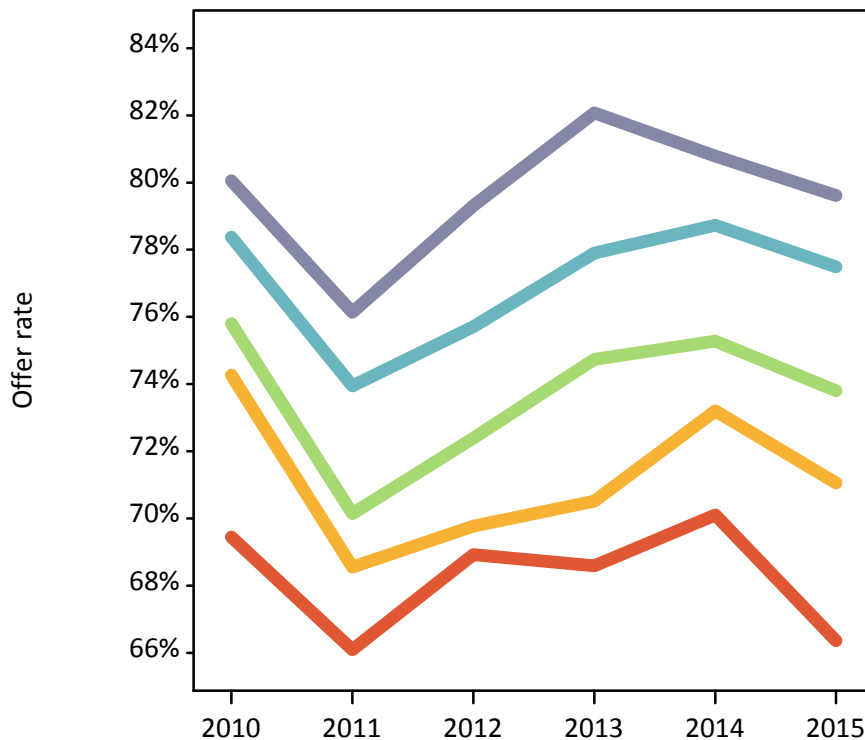
P.8 18 year old applications by POLAR3 quintile

Statistic	POLAR3 quintile	2010	2011	2012	2013	2014	2015
June deadline applications	Quintile 1	1,690	1,685	1,540	1,505	1,435	1,530
	Quintile 2	2,295	2,215	1,920	2,025	1,835	1,850
	Quintile 3	2,845	2,695	2,465	2,400	2,170	2,140
	Quintile 4	3,650	3,405	3,055	2,980	2,630	2,650
	Quintile 5	4,180	4,100	3,605	3,420	3,135	3,055
Offers	Quintile 1	1,175	1,115	1,060	1,035	1,005	1,015
	Quintile 2	1,705	1,520	1,340	1,430	1,345	1,315
	Quintile 3	2,160	1,890	1,785	1,795	1,630	1,580
	Quintile 4	2,860	2,515	2,310	2,320	2,070	2,055
	Quintile 5	3,350	3,120	2,860	2,805	2,530	2,435
Offer rate	Quintile 1	69.4%	66.1%	68.9%	68.6%	70.1%	66.4%
	Quintile 2	74.3%	68.5%	69.8%	70.5%	73.2%	71.1%
	Quintile 3	75.8%	70.1%	72.4%	74.7%	75.3%	73.8%
	Quintile 4	78.4%	73.9%	75.7%	77.9%	78.7%	77.5%
	Quintile 5	80.1%	76.1%	79.3%	82.1%	80.8%	79.6%
Average offer rate	Quintile 1	71.5%	66.4%	69.6%	70.4%	71.4%	69.5%
	Quintile 2	74.8%	69.7%	70.3%	71.5%	72.7%	72.1%
	Quintile 3	76.6%	69.8%	72.7%	75.4%	75.0%	73.5%
	Quintile 4	77.3%	73.6%	75.3%	77.1%	78.4%	76.2%
	Quintile 5	79.3%	75.9%	78.8%	80.9%	81.0%	78.8%
Percentage point difference between offer rate and average offer rate	Quintile 1	-2.1	-0.3	-0.7	-1.8	-1.3	-3.1
	Quintile 2	-0.5	-1.2	-0.6	-1.0	0.5	-1.0
	Quintile 3	-0.8	0.4	-0.3	-0.7	0.3	0.3
	Quintile 4	1.0	0.3	0.4	0.8	0.3	1.3
	Quintile 5	0.8	0.2	0.5	1.2	-0.2	0.9
Contribution of group to the average offer rate	Quintile 1	0.202	0.201	0.214	0.209	0.228	0.216
	Quintile 2	0.218	0.230	0.235	0.242	0.247	0.238
	Quintile 3	0.252	0.249	0.265	0.263	0.272	0.262
	Quintile 4	0.304	0.299	0.308	0.298	0.299	0.298
	Quintile 5	0.352	0.362	0.370	0.362	0.376	0.352

P.9 18 year old offer rate by POLAR3 quintile

Note: The line for a group is not plotted when that group made fewer than 10 applications in any of the years from 2010-2015.

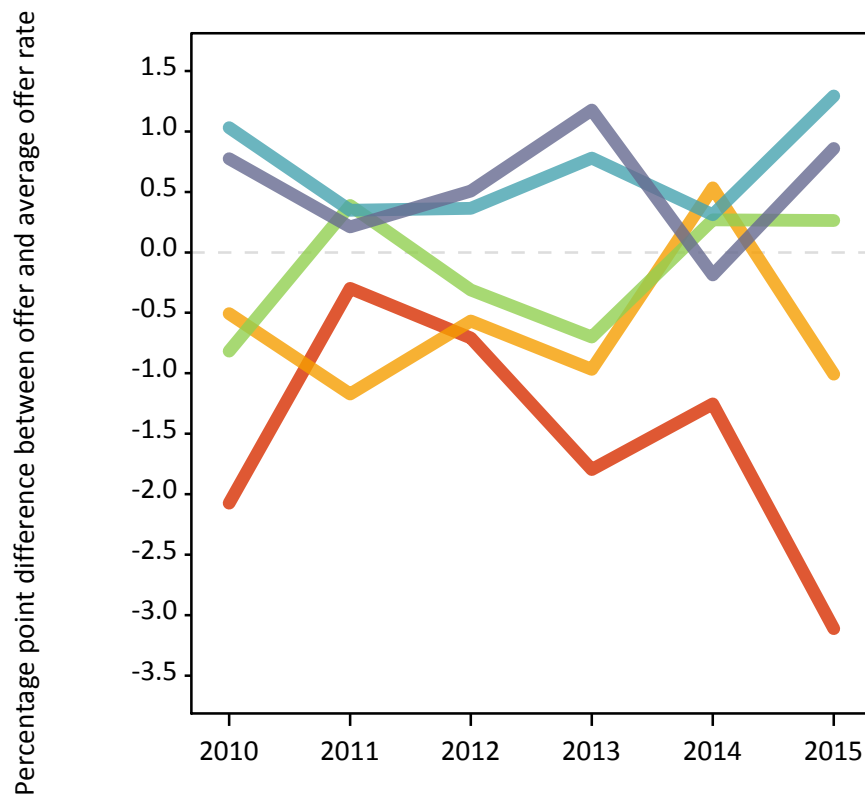
- Quintile 1
- Quintile 2
- Quintile 3
- Quintile 4
- Quintile 5



P.10 Percentage point difference between 18 year old offer rate and average offer rate by POLAR3 quintile

Note: The line for a group is not plotted when that group made fewer than 50 applications in any of the years from 2010-2015.

- Quintile 1
- Quintile 2
- Quintile 3
- Quintile 4
- Quintile 5



P.11 18 year old applicants by ethnic group

Statistic	Ethnic group	2010	2011	2012	2013	2014	2015
June deadline applicants	Asian	430	495	435	475	545	560
	Black	355	330	335	345	340	365
	Mixed	385	380	320	350	345	380
	White	12,170	11,755	10,530	10,225	9,330	9,210
	Other	45	50	50	65	50	75
Placed June deadline applicants	Asian	95	95	90	100	135	120
	Black	55	60	60	70	60	65
	Mixed	75	80	75	75	70	90
	White	2,375	2,285	2,090	2,110	1,875	1,715
	Other	5	10	15	15	15	20
All placed applicants	Asian	105	135	110	130	155	145
	Black	60	80	75	85	80	75
	Mixed	80	100	90	90	85	100
	White	2,510	2,695	2,380	2,370	2,075	1,915
	Other	5	10	15	20	15	20
June deadline applicants per 10,000 population	Asian	69.4	78.7	67.3	72.0	80.7	79.3
	Black	136.4	120.3	119.7	116.9	111.8	115.0
	Mixed	165.7	156.1	122.1	129.8	119.6	123.6
	White	181.4	181.6	163.1	162.5	151.2	147.8
	Other	61.0	59.3	58.8	70.6	52.6	75.8
Placed June deadline applicants per 10,000 population	Asian	15.2	14.8	13.9	15.0	19.6	17.1
	Black	20.2	21.2	20.6	23.9	19.1	20.4
	Mixed	32.4	33.9	28.8	27.7	24.7	29.2
	White	35.4	35.3	32.3	33.5	30.4	27.5
	Other	7.8	11.1	15.8	16.5	14.0	18.7
All placed applicants per 10,000 population	Asian	17.1	21.3	16.8	19.4	23.2	20.8
	Black	22.9	28.5	26.3	28.6	26.7	23.6
	Mixed	34.1	41.3	34.2	34.0	29.5	32.1
	White	37.4	41.6	36.8	37.7	33.6	30.7
	Other	9.1	12.3	18.1	19.9	15.0	21.8

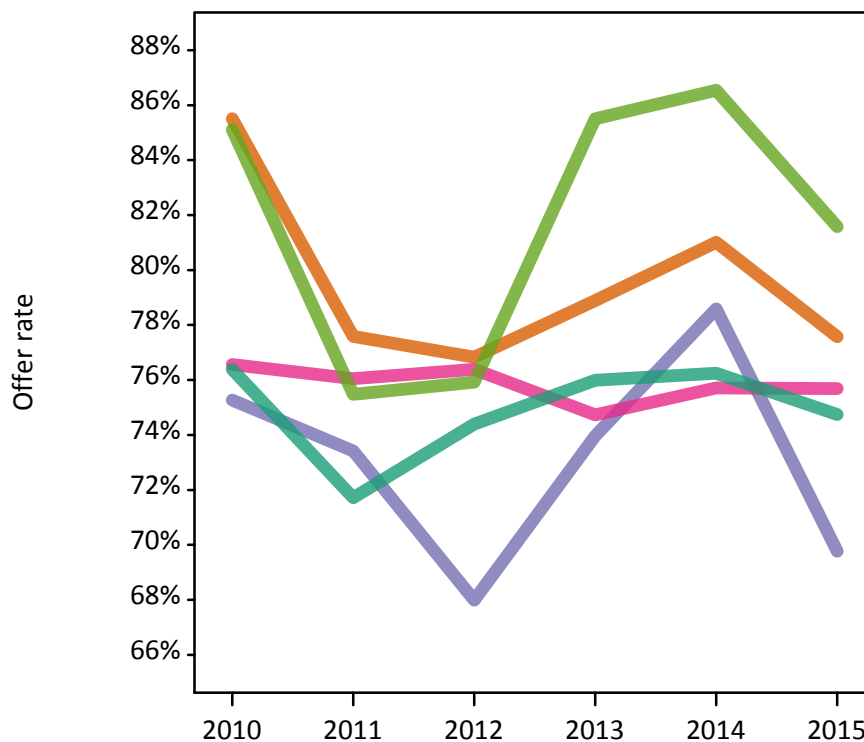
P.12 18 year old applications by ethnic group

Statistic	Ethnic group	2010	2011	2012	2013	2014	2015
June deadline applications	Asian	485	530	490	505	595	600
	Black	375	345	355	360	355	385
	Mixed	420	405	345	370	350	405
	White	13,315	12,745	11,340	11,000	9,845	9,750
	Other	45	55	55	70	50	75
Offers	Asian	415	410	380	400	480	465
	Black	285	255	240	265	280	270
	Mixed	320	310	260	280	265	305
	White	10,170	9,140	8,435	8,360	7,505	7,285
	Other	40	40	40	60	45	60
Offer rate	Asian	85.5%	77.6%	76.8%	78.9%	81.0%	77.6%
	Black	75.3%	73.4%	68.0%	74.0%	78.6%	69.8%
	Mixed	76.6%	76.0%	76.4%	74.7%	75.7%	75.7%
	White	76.4%	71.7%	74.4%	76.0%	76.2%	74.7%
	Other	85.1%	75.5%	75.9%	85.5%	86.5%	81.6%
Average offer rate	Asian	85.1%	76.5%	78.9%	80.2%	82.4%	80.7%
	Black	79.0%	76.2%	72.2%	77.2%	78.8%	73.0%
	Mixed	78.5%	75.7%	75.5%	76.1%	76.4%	75.9%
	White	76.2%	71.7%	74.2%	75.8%	76.1%	74.4%
	Other	85.5%	76.4%	80.7%	84.6%	90.0%	86.2%
Percentage point difference between offer rate and average offer rate	Asian	0.4	1.1	-2.0	-1.3	-1.4	-3.2
	Black	-3.7	-2.7	-4.2	-3.2	-0.2	-3.2
	Mixed	-1.9	0.4	0.9	-1.4	-0.6	-0.2
	White	0.1	0.0	0.2	0.2	0.1	0.4
	Other	N/A	-0.9	-4.8	0.9	-3.5	-4.7
Contribution of group to the average offer rate	Asian	0.142	0.143	0.163	0.159	0.178	0.165
	Black	0.132	0.130	0.141	0.123	0.156	0.139
	Mixed	0.104	0.104	0.108	0.118	0.114	0.122
	White	0.918	0.914	0.913	0.906	0.895	0.883
	Other	0.067	0.096	0.124	0.119	0.080	0.121

P.13 18 year old offer rate by ethnic group

Note: The line for a group is not plotted when that group made fewer than 10 applications in any of the years from 2010-2015.

- Asian
- Black
- Mixed
- White
- Other



P.14 Percentage point difference between 18 year old offer rate and average offer rate by ethnic group

Note: The line for a group is not plotted when that group made fewer than 50 applications in any of the years from 2010-2015.

- Asian
- Black
- Mixed
- White
- Other



P.15 Applicants (all ages)

Statistic	2010	2011	2012	2013	2014	2015
June deadline applicants	28,165	28,475	24,905	25,285	24,180	23,710
Placed June deadline applicants	6,265	5,890	5,210	5,445	5,250	4,970
All placed applicants	6,660	6,850	6,175	6,335	5,910	5,650

P.16 Applications (all ages)

Statistic	2010	2011	2012	2013	2014	2015
June deadline applications	31,775	31,855	27,660	27,795	26,295	25,790
Offers	20,365	18,825	16,705	17,455	16,670	16,255
Offer rate	64.1%	59.1%	60.4%	62.8%	63.4%	63.0%

P.17 Applicants (all ages) by sex

Statistic	Sex	2010	2011	2012	2013	2014	2015
June deadline applicants	Men	12,725	12,765	10,815	10,860	10,280	10,005
	Women	15,445	15,710	14,090	14,425	13,900	13,705
Placed June deadline applicants	Men	2,870	2,775	2,435	2,625	2,385	2,315
	Women	3,400	3,115	2,780	2,820	2,865	2,655
All placed applicants	Men	3,030	3,210	2,870	3,005	2,710	2,615
	Women	3,625	3,645	3,305	3,335	3,200	3,030

P.18 Applications (all ages) by sex

Statistic	Sex	2010	2011	2012	2013	2014	2015
June deadline applications	Men	14,430	14,305	12,065	11,945	11,260	10,980
	Women	17,345	17,550	15,595	15,850	15,040	14,810
Offers	Men	10,585	9,700	8,420	8,805	8,275	8,185
	Women	9,780	9,130	8,285	8,650	8,395	8,070
Offer rate	Men	73.3%	67.8%	69.8%	73.7%	73.5%	74.5%
	Women	56.4%	52.0%	53.1%	54.6%	55.8%	54.5%

P.19 Applicants (all ages) by POLAR3 quintile

Statistic	POLAR3 quintile	2010	2011	2012	2013	2014	2015
June deadline applicants	Quintile 1	3,635	3,955	3,585	3,670	3,700	3,675
	Quintile 2	4,575	4,720	4,195	4,290	4,165	4,215
	Quintile 3	5,490	5,475	4,795	4,955	4,765	4,505
	Quintile 4	6,605	6,570	5,695	5,805	5,345	5,310
	Quintile 5	7,765	7,675	6,555	6,500	6,150	5,935
Placed June deadline applicants	Quintile 1	890	875	840	875	835	800
	Quintile 2	980	945	810	890	890	850
	Quintile 3	1,265	1,170	1,040	1,040	1,060	965
	Quintile 4	1,380	1,320	1,150	1,215	1,110	1,100
	Quintile 5	1,725	1,555	1,355	1,410	1,340	1,240
All placed applicants	Quintile 1	950	1,000	985	1,010	945	930
	Quintile 2	1,035	1,075	960	1,010	985	955
	Quintile 3	1,355	1,350	1,230	1,235	1,190	1,105
	Quintile 4	1,455	1,545	1,365	1,420	1,250	1,235
	Quintile 5	1,835	1,855	1,615	1,640	1,525	1,405

P.20 Applications (all ages) by POLAR3 quintile

Statistic	POLAR3 quintile	2010	2011	2012	2013	2014	2015
June deadline applications	Quintile 1	4,335	4,710	4,275	4,200	4,210	4,185
	Quintile 2	5,235	5,320	4,645	4,765	4,545	4,550
	Quintile 3	6,300	6,185	5,355	5,500	5,220	4,940
	Quintile 4	7,285	7,190	6,185	6,275	5,730	5,710
	Quintile 5	8,500	8,350	7,110	6,975	6,530	6,310
Offers	Quintile 1	2,485	2,425	2,310	2,305	2,370	2,285
	Quintile 2	3,190	2,970	2,575	2,800	2,680	2,660
	Quintile 3	3,930	3,580	3,175	3,345	3,250	3,105
	Quintile 4	4,845	4,410	3,890	4,085	3,755	3,775
	Quintile 5	5,845	5,390	4,705	4,880	4,580	4,380
Offer rate	Quintile 1	57.3%	51.4%	54.0%	54.9%	56.3%	54.5%
	Quintile 2	60.9%	55.8%	55.4%	58.8%	59.0%	58.5%
	Quintile 3	62.4%	57.8%	59.3%	60.8%	62.3%	62.8%
	Quintile 4	66.5%	61.3%	62.9%	65.1%	65.5%	66.1%
	Quintile 5	68.8%	64.5%	66.2%	69.9%	70.2%	69.4%

P.21 Applicants (all ages) by ethnic group

Statistic	Ethnic group	2010	2011	2012	2013	2014	2015
June deadline applicants	Asian	1,030	1,140	1,040	1,110	1,280	1,300
	Black	1,175	1,285	1,255	1,205	1,230	1,245
	Mixed	855	940	755	825	820	890
	White	24,825	24,835	21,595	21,860	20,605	19,950
	Other	130	140	155	180	145	195
Placed June deadline applicants	Asian	240	215	190	245	275	245
	Black	225	235	215	240	240	220
	Mixed	185	205	175	200	175	215
	White	5,560	5,175	4,580	4,695	4,500	4,235
	Other	20	25	30	40	30	35
All placed applicants	Asian	275	285	250	315	335	310
	Black	260	290	295	315	315	290
	Mixed	195	245	215	240	205	255
	White	5,860	5,960	5,355	5,390	4,985	4,705
	Other	20	35	35	50	40	40

P.22 Applications (all ages) by ethnic group

Statistic	Ethnic group	2010	2011	2012	2013	2014	2015
June deadline applications	Asian	1,190	1,305	1,205	1,235	1,440	1,445
	Black	1,405	1,495	1,435	1,340	1,390	1,400
	Mixed	960	1,040	855	895	875	975
	White	27,915	27,695	23,880	24,010	22,330	21,610
	Other	135	160	170	195	155	205
Offers	Asian	865	810	745	825	995	960
	Black	710	660	650	650	730	675
	Mixed	625	640	540	560	560	630
	White	17,960	16,530	14,610	15,215	14,210	13,765
	Other	90	95	90	130	105	130
Offer rate	Asian	72.6%	62.0%	62.1%	66.8%	69.1%	66.6%
	Black	50.6%	44.3%	45.3%	48.7%	52.6%	48.3%
	Mixed	65.4%	61.2%	63.0%	62.8%	63.9%	64.6%
	White	64.3%	59.7%	61.2%	63.4%	63.6%	63.7%
	Other	66.4%	58.8%	54.8%	68.0%	68.6%	62.3%

Technical Notes and Definitions

UCAS undergraduate scheme

Adjustment

Adjustment allows applicants who have met and exceeded the terms of their conditional firm offer to seek and find a place at another provider whilst keeping their place at their original firm choice provider.

Clearing

Clearing is a route for applicants that are not placed and holding no offers to find a place on courses with vacancies.

Cycle year

The UCAS application cycle which runs from September to October the following year. For example the 2015 cycle runs from September 2014 through to October 2015.

End of cycle

The point in the cycle to which the numbers in this report refer, and the point at which the cycle is closed such that no more applications or offers can be made, and no more applicants can be placed. Numbers reported at the end of cycle exclude information on a small number of applicants who cancelled during the cycle.

Extra

Applicants who are unsuccessful in obtaining an offer or decline all offers may be eligible to apply through Extra, where they can apply to one further course at a time. Extra operates from 25 February until early July. It provides applicants who are eligible the possibility of obtaining an offer before exam results are published and Clearing starts.

June 30 deadline

The deadline for main scheme applications. Applicants who apply after this date will go directly into Clearing.

Record of Prior Acceptance (RPA)

RPA is an acceptance route used when a provider informs UCAS of applicants it has accepted outside of the normal application process (e.g. individuals who have applied directly to the provider).

Reporting groups

Ethnic group

High level grouping of ethnic origin as declared by the applicant: 'White', 'Black', 'Asian', 'Mixed', 'Other', 'Unknown'. Applicants who declare themselves as 'Unknown' ethnic origin are not reported in these tables, but are included in the associated csv data file.

POLAR3 quintile

Developed by HEFCE, POLAR3 classifies small areas across the UK into five groups according to their level of young participation in Higher Education. Each of these groups represents around 20 per cent of young people and is ranked from Quintile 1 (areas with the lowest young participation rates, considered as the most disadvantaged) to Quintile 5 (highest young participation rates, considered most advantaged). POLAR3 is based on the participation rates of young people between 2005 and 2009 who entered Higher Education between 2005-06 and 2010-11, therefore is most suitable for applicants aged 19 and under. These groups are assigned using the postcode declared by the applicant at the time of their application. If a UK postcode is invalid, considered unsafe for measurement or there is no link to Census geography possible then the applicant is not assigned to a quintile. Applicants with no POLAR3 quintile are not reported.

Sex

Sex as declared by the applicant.

SIMD quintile

Scottish index of multiple deprivation (SIMD) for 2012 identifies small area concentrations of multiple deprivation across all of Scotland, providing a relative measure of deprivation amongst 6505 small areas (data zones) based on 7 socio-economic domains. These small areas are classified into five groups ranked from Quintile 1 (considered the most deprived) to Quintile 5 (considered least deprived), with equal populations in each quintile. Quintiles are assigned using the postcode declared by the applicant, applicants declaring invalid postcodes are classified as 'Not assigned' and are not reported.

SIMD is only defined for applicants domiciled in Scotland, therefore any applicants domiciled outside of Scotland cannot be assigned to an SIMD quintile and so are not reported for this measure.

SIMD is only reported for providers in Scotland. Application and entry rates by SIMD are reported in the 2015 End of Cycle Report and the 2016 cycle January deadline application rate report.

Statistics reported in the tables

All placed applicants

The number of applicants placed for entry into higher education at the provider through one of their choices, including any choices made through Extra, or via Adjustment, Clearing or RPA.

All placed applicants per 10,000 population

The number of total UK domiciled 18 year old placed applicants for entry into higher education at the provider divided by the number of UK 18 year olds in the population, multiplied by 10,000. This gives the number of 18 year olds, for every 10,000 in the population, that were placed at the provider through one of their choices, including any choices made through Extra, or via Adjustment, Clearing or RPA. It is an alternative way of expressing the entry rate to a provider. By referencing the underlying population this statistic shows how the number of placed applicants is changing in relation to the available pool of potential applicants and so gives the chance that somebody from the group will be placed at a provider.

This statistic is only reported for 18 year olds.

Average offer rate

The offer rate that you might expect if the predicted grades and subject choice of applicants were the only factors that influenced whether an applicant was made an offer by the provider. The average offer rate is calculated by dividing applicants according to their specific combination of grades (for A levels the best three predicted grades are used, for BTECs, International Baccalaureate and Scottish Highers and Advanced Highers, predicted grades along with any grades already achieved upon applying are used) and subject choice. For each combination the number of main scheme offers is divided by the number of main scheme applications, to give an overall offer rate. This is then multiplied by the number of applications made by the group for which the average offer rate is being calculated (for example POLAR3 quintile 1), to give an average number of offers for that group. These average number of offers are then added together across all combinations of predicted grade and subject and divided by the number of main scheme applications from the group to give the average offer rate.

The average offer rate does not attempt to control for any other factors that may play a part in the decision to make an offer, such as the subject of the qualifications studied, their relevance to a course, or the grade in each subject; higher numbers of A levels being studied; the exact profile of grades predicted; personal statements; teacher references; interviews; or any other criteria (such as work experience or portfolios) that may be part of the admissions decision.

This statistic is only reported for 18 year olds.

Contribution of group to the average offer rate

The way in which the average offer rate is defined means that the pattern of application and offers of a group (for example POLAR3 quintile 1) will always contribute, in part, to the average offer rate for that group. When this contribution is large, the average offer rate will mainly reflect the patterns for the group, meaning that the value of the average offer rate will be similar to the offer rate, the percentage point difference statistic will be small, and any real difference between the offer rate and what might be expected given the predicted grades and subject choices of the applicants will be difficult to detect.

Values of the contribution of group to the average offer rate range between 0 and 1. The closer the value is to 1 the greater the contribution a group makes to its own average offer rate.

This statistic is only reported for 18 year olds.

Placed June deadline applicants

An applicant who has been placed for entry into higher education at the provider through a June deadline application.

Placed June deadline applicants per 10,000 population

The number of UK domiciled 18 year old placed June deadline applicants at the provider divided by the number of UK 18 year olds in the population, multiplied by 10,000. This gives the number of 18 year olds, for every 10,000 in the population, that were placed at the provider through one of their June deadline applications. It is an alternative way of expressing the entry rate to a provider, but for placed June deadline applicants only. By referencing the underlying population this statistic shows how the number of placed June deadline applicants is changing in relation to the available pool of potential 18 year old applicants and so gives the chance that somebody from the group will be placed at a provider through a June deadline application.

This statistic is only reported for 18 year olds.

June deadline applications

An application (or choice) to a course in higher education to the provider that is made by the June 30 deadline. Each applicant can make up to five choices this way. The number of June deadline applications does not include choices made through the following routes: Clearing, Extra, Adjustment and RPAs. Applications made to October deadline courses received after the October deadline are not included in these statistics.

June deadline applicants

The number of applicants that made at least one application to the provider by the June 30 deadline.

June deadline applicants per 10,000 population

The number of UK domiciled 18 year old June deadline applicants to the provider divided by the number of UK 18 year olds in the population, multiplied by 10,000. This gives the number of 18 year olds, for every 10,000 in the population, who applied by the June 30 deadline. It is equivalent to the application rate. By referencing the underlying population this statistic shows how the number of June deadline applicants is changing in relation to the available pool of potential 18 year old applicants and so gives the chance that somebody from the group will apply to a provider by the June 30 deadline.

This statistic is only reported for 18 year olds.

Offers

An offer is defined as a provider's decision in response to an application to offer a place to an applicant, often subject to the applicant satisfying academic and/or other criteria, via a June deadline application (i.e. does not cover choices made through the following routes: Clearing, Extra, Adjustment and RPAs).

Offer rate

The number of offers made divided by the number of June deadline applications. This gives the proportion of all June deadline applications to the provider that received an offer.

Percentage point difference between offer rate and average offer rate

The offer rate minus the average offer rate.

The percentage point difference can be compared to the expected range of statistical variation resulting from the calculation of the average offer rate using the Average Offer Rate Lookup Table. Where the value of the percentage point difference lies outside of this range, the percentage point difference may be considered to represent a real difference between the offer rate and the average offer rate.

Other definitions

Age

This analysis uses country-specific age definitions that align with the cut off points for school and college cohorts within the different administrations of the UK. For England and Wales, ages are defined on the 31 August, for Northern Ireland on the 1 July and for Scotland on the 28 February the following year. Defining ages in this way matches the assignment of children to school cohorts. For applicants outside of the UK a cohort cut off of 31 August has been used.

Provider

A higher education provider - a university or college.

UK domiciled

Declared area of permanent residence within England, Northern Ireland, Scotland and Wales. Applicants from the Channel Islands and Isle of Man are not included.