

## B56 The University of Bradford

**Cycle years:** 2010 - 2015

**Cycle Reference Point:** End of Cycle

**Applicant coverage:** UK domiciled

**Reporting groups:** Sex, POLAR3, ethnic group

**Applicant statistics:** June deadline applicants, placed June deadline applicants, all placed applicants, June deadline applicants per 10,000 population, placed June deadline applicants per 10,000 population, all placed applicants per 10,000 population

**Application statistics:** June deadline applications, offers, offer rate, average offer rate, percentage point difference between offer rate and average offer rate, contribution of group to the average offer rate

**Non-disclosure controls:** To avoid the disclosure of information about any individual the following measures are taken

- Applicants, placed applicants, applications and offers are rounded to the nearest 5.
- Applicants/placed applicants per 10,000 population figures are reported as 0 if the applicant/placed applicant figures are rounded to 0.
- All statistics related to the offer rate are not reported when the number of applications for a group is less than 10. The percentage point difference between the offer rate and the average offer rate is not reported when the number of applications for a group is less than 50.
- Offer rates are reported as 0% if there are fewer than 5 offers, and 100% if the number of offers is within 5 of the number of applications. When the offer rate is reported as 0% or 100%, it is reported in italics.

### Contents:

18 year old applicants:	P.1
18 year old applications:	P.2
18 year old applicants by sex:	P.3
18 year old applications by sex:	P.4
18 year old applicants by POLAR3 quintile:	P.7
18 year old applications by POLAR3 quintile:	P.8
18 year old applicants by ethnic group:	P.11
18 year old applications by ethnic group:	P.12
Applicants (all ages):	P.15
Applications (all ages):	P.16
Applicants (all ages) by sex:	P.17
Applications (all ages) by sex:	P.18
Applicants (all ages) by POLAR3 quintile:	P.19
Applications (all ages) by POLAR3 quintile:	P.20
Applicants (all ages) by ethnic group:	P.21
Applications (all ages) by ethnic group:	P.22

## P.1 18 year old applicants

Statistic	2010	2011	2012	2013	2014	2015
June deadline applicants	3,945	4,665	5,070	4,275	4,630	4,460
Placed June deadline applicants	835	880	710	810	755	745
All placed applicants	1,330	1,290	1,040	1,065	965	1,005
June deadline applicants per 10,000 population	50.0	60.6	65.6	56.2	61.4	58.2
Placed June deadline applicants per 10,000	10.6	11.4	9.2	10.6	10.0	9.8
All placed applicants per 10,000 population	16.8	16.8	13.4	14.0	12.8	13.1

## P.2 18 year old applications

Statistic	2010	2011	2012	2013	2014	2015
June deadline applications	4,850	5,575	5,895	5,050	5,375	5,090
Offers	3,595	4,115	3,720	4,235	4,590	4,105
Offer rate	74.1%	73.8%	63.1%	83.8%	85.3%	80.6%

### P.3 18 year old applicants by sex

Statistic	Sex	2010	2011	2012	2013	2014	2015
June deadline applicants	Men	1,800	2,255	2,295	2,045	2,055	1,945
	Women	2,145	2,415	2,775	2,230	2,575	2,520
Placed June deadline applicants	Men	375	395	330	380	340	315
	Women	460	485	380	430	415	430
All placed applicants	Men	625	605	470	505	430	445
	Women	705	690	570	560	535	560
June deadline applicants per 10,000 population	Men	44.8	57.3	57.8	52.3	53.1	49.5
	Women	55.4	64.1	73.7	60.2	70.3	67.4
Placed June deadline applicants per 10,000 population	Men	9.3	10.0	8.4	9.7	8.7	8.1
	Women	11.9	12.9	10.1	11.6	11.3	11.5
All placed applicants per 10,000 population	Men	15.5	15.3	11.8	13.0	11.1	11.3
	Women	18.2	18.3	15.2	15.1	14.6	15.0

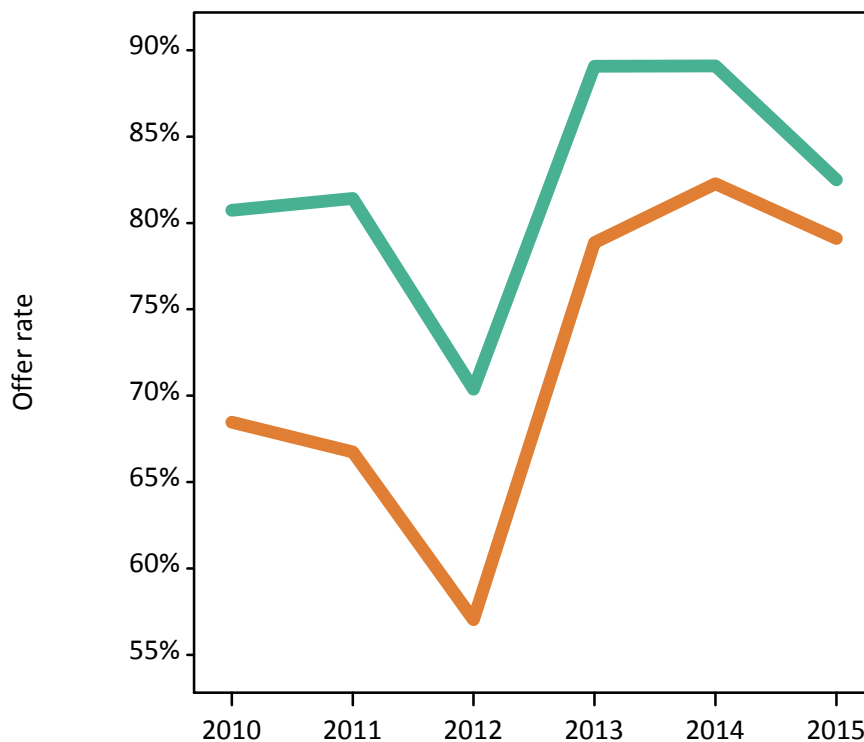
### P.4 18 year old applications by sex

Statistic	Sex	2010	2011	2012	2013	2014	2015
June deadline applications	Men	2,210	2,670	2,690	2,445	2,430	2,235
	Women	2,640	2,910	3,200	2,605	2,950	2,860
Offers	Men	1,785	2,175	1,895	2,180	2,165	1,840
	Women	1,810	1,940	1,825	2,055	2,425	2,260
Offer rate	Men	80.7%	81.4%	70.4%	89.1%	89.1%	82.5%
	Women	68.5%	66.7%	57.0%	78.9%	82.3%	79.1%
Average offer rate	Men	81.5%	82.3%	71.3%	89.9%	90.5%	83.2%
	Women	67.8%	65.9%	56.2%	78.1%	81.1%	78.6%
Percentage point difference between offer rate and average offer rate	Men	-0.8	-0.9	-1.0	-0.8	-1.4	-0.7
	Women	0.7	0.8	0.8	0.7	1.1	0.5
Contribution of group to the average offer rate	Men	0.654	0.665	0.655	0.687	0.655	0.654
	Women	0.710	0.692	0.710	0.706	0.716	0.730

### P.5 18 year old offer rate by sex

Note: The line for a group is not plotted when that group made fewer than 10 applications in any of the years from 2010-2015.

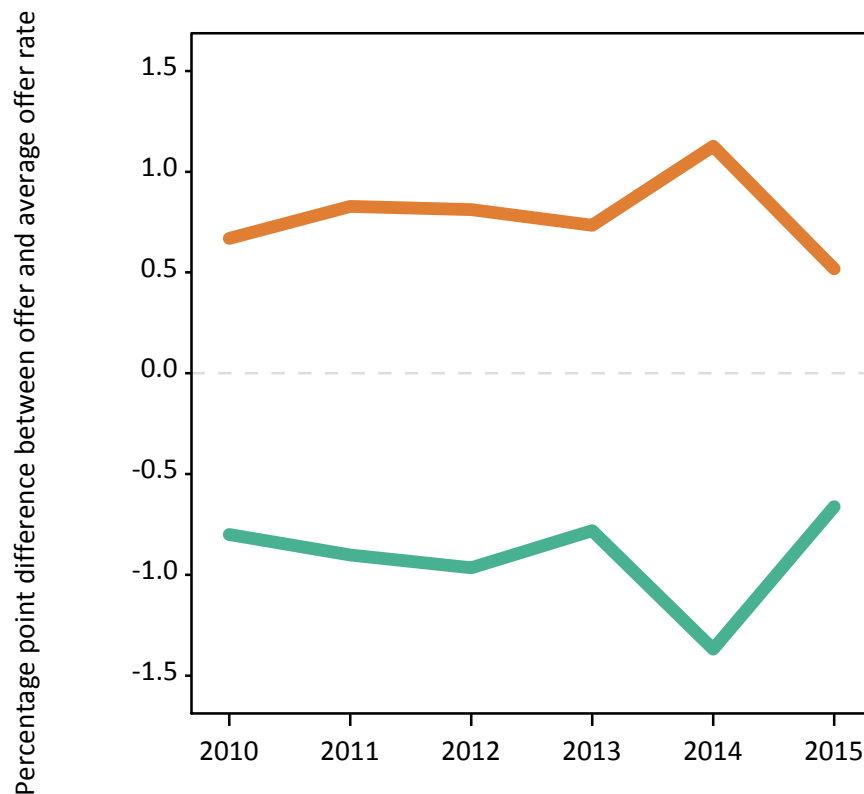
Men  
Women



### P.6 Percentage point difference between 18 year old offer rate and average offer rate by sex

Note: The line for a group is not plotted when that group made fewer than 50 applications in any of the years from 2010-2015.

Men  
Women



## P.7 18 year old applicants by POLAR3 quintile

Statistic	POLAR3 quintile	2010	2011	2012	2013	2014	2015
June deadline applicants	Quintile 1	540	655	780	615	750	665
	Quintile 2	905	1,065	1,260	1,060	1,145	1,170
	Quintile 3	1,100	1,335	1,400	1,205	1,305	1,315
	Quintile 4	760	860	870	765	780	735
	Quintile 5	635	745	755	620	640	565
Placed June deadline applicants	Quintile 1	95	115	100	115	95	90
	Quintile 2	215	215	205	210	210	210
	Quintile 3	300	285	250	285	270	285
	Quintile 4	130	155	85	120	100	95
	Quintile 5	90	110	70	80	80	60
All placed applicants	Quintile 1	160	150	140	145	130	130
	Quintile 2	310	295	275	275	255	270
	Quintile 3	435	415	365	375	330	390
	Quintile 4	220	235	130	155	130	125
	Quintile 5	205	190	125	120	120	90
June deadline applicants per 10,000 population	Quintile 1	36.5	45.6	54.7	44.3	53.9	47.4
	Quintile 2	59.0	70.9	83.9	71.9	78.3	78.8
	Quintile 3	69.2	86.7	90.7	79.1	86.7	85.8
	Quintile 4	47.7	54.8	54.8	49.0	50.6	47.0
	Quintile 5	37.5	44.9	44.9	37.5	39.2	33.9
Placed June deadline applicants per 10,000 population	Quintile 1	6.5	8.1	7.0	8.3	6.8	6.5
	Quintile 2	14.0	14.2	13.6	14.3	14.3	14.2
	Quintile 3	18.9	18.4	16.3	18.6	17.8	18.7
	Quintile 4	8.3	10.0	5.5	7.7	6.6	6.1
	Quintile 5	5.3	6.5	4.1	4.8	4.8	3.6
All placed applicants per 10,000 population	Quintile 1	10.7	10.4	10.0	10.3	9.3	9.2
	Quintile 2	20.0	19.7	18.4	18.5	17.6	18.0
	Quintile 3	27.4	27.0	23.8	24.5	21.9	25.5
	Quintile 4	13.9	15.1	8.1	9.9	8.5	8.0
	Quintile 5	12.0	11.5	7.4	7.2	7.2	5.4

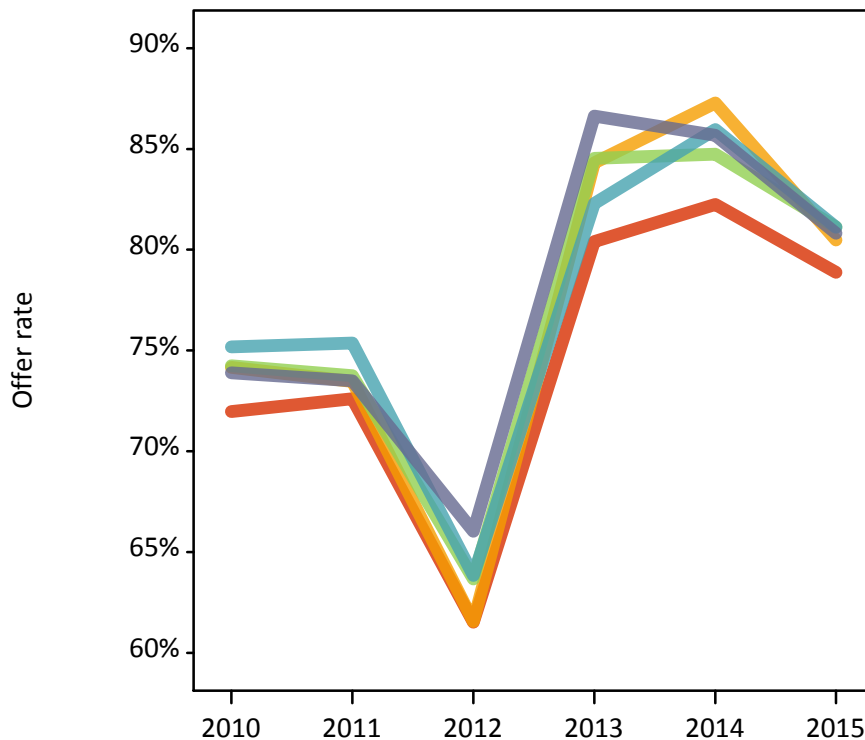
## P.8 18 year old applications by POLAR3 quintile

Statistic	POLAR3 quintile	2010	2011	2012	2013	2014	2015
June deadline applications	Quintile 1	610	750	855	680	835	715
	Quintile 2	1,140	1,320	1,500	1,320	1,400	1,355
	Quintile 3	1,565	1,770	1,795	1,560	1,620	1,640
	Quintile 4	855	950	955	835	835	785
	Quintile 5	680	775	775	650	685	590
Offers	Quintile 1	440	545	525	545	685	565
	Quintile 2	845	970	920	1,115	1,220	1,090
	Quintile 3	1,160	1,305	1,145	1,315	1,370	1,330
	Quintile 4	640	715	610	690	715	635
	Quintile 5	505	570	515	565	585	475
Offer rate	Quintile 1	72.0%	72.6%	61.5%	80.4%	82.3%	78.9%
	Quintile 2	74.2%	73.5%	61.5%	84.3%	87.3%	80.5%
	Quintile 3	74.2%	73.7%	63.7%	84.5%	84.7%	81.1%
	Quintile 4	75.2%	75.4%	63.8%	82.3%	86.0%	81.1%
	Quintile 5	73.9%	73.5%	66.0%	86.6%	85.7%	80.8%
Average offer rate	Quintile 1	70.9%	73.0%	63.0%	80.2%	83.8%	79.3%
	Quintile 2	74.6%	72.9%	61.4%	83.9%	86.2%	79.9%
	Quintile 3	73.9%	74.0%	63.1%	84.5%	85.1%	81.6%
	Quintile 4	74.7%	75.4%	65.0%	82.9%	84.8%	81.3%
	Quintile 5	75.8%	73.3%	64.5%	87.0%	86.5%	80.2%
Percentage point difference between offer rate and average offer rate	Quintile 1	1.1	-0.4	-1.5	0.2	-1.6	-0.4
	Quintile 2	-0.4	0.5	0.1	0.4	1.1	0.6
	Quintile 3	0.4	-0.3	0.5	0.0	-0.4	-0.5
	Quintile 4	0.5	-0.1	-1.2	-0.6	1.2	-0.2
	Quintile 5	-1.9	0.1	1.5	-0.4	-0.8	0.6
Contribution of group to the average offer rate	Quintile 1	0.252	0.250	0.246	0.269	0.257	0.237
	Quintile 2	0.340	0.331	0.333	0.359	0.347	0.349
	Quintile 3	0.432	0.416	0.402	0.406	0.391	0.415
	Quintile 4	0.308	0.289	0.279	0.290	0.265	0.271
	Quintile 5	0.301	0.302	0.268	0.292	0.269	0.277

### P.9 18 year old offer rate by POLAR3 quintile

Note: The line for a group is not plotted when that group made fewer than 10 applications in any of the years from 2010-2015.

- Quintile 1
- Quintile 2
- Quintile 3
- Quintile 4
- Quintile 5



### P.10 Percentage point difference between 18 year old offer rate and average offer rate by POLAR3 quintile

Note: The line for a group is not plotted when that group made fewer than 50 applications in any of the years from 2010-2015.

- Quintile 1
- Quintile 2
- Quintile 3
- Quintile 4
- Quintile 5



## P.11 18 year old applicants by ethnic group

Statistic	Ethnic group	2010	2011	2012	2013	2014	2015
June deadline applicants	Asian	1,750	2,040	2,205	2,010	2,160	2,095
	Black	220	305	365	290	295	320
	Mixed	95	130	155	110	115	130
	White	1,815	2,110	2,225	1,755	1,945	1,775
	Other	35	50	95	75	90	90
Placed June deadline applicants	Asian	525	515	420	510	470	470
	Black	30	40	30	40	35	40
	Mixed	15	20	20	15	15	20
	White	245	280	225	230	215	205
	Other	10	15	10	10	15	10
All placed applicants	Asian	730	710	635	665	610	655
	Black	95	90	60	60	55	55
	Mixed	25	25	35	20	20	25
	White	440	430	290	285	250	245
	Other	15	20	15	20	20	15
June deadline applicants per 10,000 population	Asian	283.2	323.9	340.3	304.8	318.7	296.4
	Black	83.7	111.6	128.9	97.3	97.3	100.6
	Mixed	40.6	54.1	59.9	41.1	39.6	42.8
	White	27.1	32.6	34.4	27.9	31.5	28.5
	Other	46.8	64.2	105.1	80.5	96.7	95.5
Placed June deadline applicants per 10,000 population	Asian	84.9	82.0	65.0	77.0	69.6	66.1
	Black	12.2	14.6	11.0	14.1	10.9	12.9
	Mixed	6.9	7.4	8.4	4.8	5.2	6.2
	White	3.7	4.3	3.5	3.6	3.5	3.3
	Other	10.4	18.5	12.4	11.0	16.1	8.3
All placed applicants per 10,000 population	Asian	118.4	112.7	97.9	101.0	90.1	92.9
	Black	36.7	33.3	21.0	20.5	17.8	17.3
	Mixed	9.9	10.7	12.7	7.0	7.6	8.1
	White	6.6	6.6	4.5	4.5	4.1	3.9
	Other	22.1	25.9	18.1	23.2	23.6	16.6



## P.12 18 year old applications by ethnic group

Statistic	Ethnic group	2010	2011	2012	2013	2014	2015
June deadline applications	Asian	2,485	2,780	2,865	2,650	2,740	2,605
	Black	235	315	370	305	300	325
	Mixed	100	145	165	120	120	150
	White	1,950	2,250	2,350	1,855	2,090	1,865
	Other	40	55	100	80	100	95
Offers	Asian	1,840	2,025	1,815	2,230	2,350	2,150
	Black	170	230	210	260	250	250
	Mixed	75	100	105	105	105	120
	White	1,440	1,685	1,500	1,530	1,780	1,470
	Other	35	45	65	75	85	80
Offer rate	Asian	74.1%	72.8%	63.4%	84.2%	85.7%	82.5%
	Black	72.8%	73.2%	56.3%	85.6%	82.4%	75.8%
	Mixed	73.0%	70.8%	63.5%	85.8%	85.8%	79.9%
	White	73.9%	74.9%	63.8%	82.3%	85.3%	78.8%
	Other	85.4%	80.4%	64.7%	91.3%	84.8%	81.4%
Average offer rate	Asian	74.4%	73.9%	63.6%	85.1%	86.5%	82.7%
	Black	72.2%	73.1%	59.3%	86.6%	85.5%	79.9%
	Mixed	70.9%	73.4%	64.7%	82.1%	85.7%	82.5%
	White	73.8%	73.5%	62.9%	81.3%	83.7%	77.5%
	Other	80.0%	77.0%	66.4%	87.8%	86.6%	82.3%
Percentage point difference between offer rate and average offer rate	Asian	-0.3	-1.1	-0.2	-0.9	-0.8	-0.2
	Black	0.6	0.2	-3.0	-1.0	-3.1	-4.1
	Mixed	2.1	-2.6	-1.2	3.7	0.1	-2.6
	White	0.1	1.3	1.0	1.0	1.7	1.4
	Other	N/A	3.3	-1.7	3.4	-1.8	-0.9
Contribution of group to the average offer rate	Asian	0.659	0.648	0.628	0.653	0.628	0.628
	Black	0.176	0.195	0.180	0.194	0.160	0.194
	Mixed	0.171	0.172	0.153	0.175	0.135	0.153
	White	0.596	0.596	0.572	0.545	0.549	0.527
	Other	0.129	0.128	0.150	0.156	0.141	0.150

**P.13 18 year old offer rate by ethnic group**

Note: The line for a group is not plotted when that group made fewer than 10 applications in any of the years from 2010-2015.

- Asian
- Black
- Mixed
- White
- Other



**P.14 Percentage point difference between 18 year old offer rate and average offer rate by ethnic group**

Note: The line for a group is not plotted when that group made fewer than 50 applications in any of the years from 2010-2015.

- Asian
- Black
- Mixed
- White
- Other



### P.15 Applicants (all ages)

Statistic	2010	2011	2012	2013	2014	2015
June deadline applicants	9,615	11,060	11,390	10,170	10,740	10,375
Placed June deadline applicants	1,885	1,930	1,520	1,815	1,675	1,655
All placed applicants	2,780	2,805	2,320	2,495	2,200	2,215

### P.16 Applications (all ages)

Statistic	2010	2011	2012	2013	2014	2015
June deadline applications	11,730	13,285	13,245	11,830	12,315	11,695
Offers	6,960	7,935	6,710	8,525	8,970	8,205
Offer rate	59.3%	59.7%	50.6%	72.1%	72.8%	70.2%

### P.17 Applicants (all ages) by sex

Statistic	Sex	2010	2011	2012	2013	2014	2015
June deadline applicants	Men	4,150	5,020	4,910	4,410	4,410	4,135
	Women	5,470	6,040	6,480	5,760	6,330	6,240
Placed June deadline applicants	Men	790	830	660	770	680	640
	Women	1,095	1,105	860	1,040	1,000	1,015
All placed applicants	Men	1,275	1,260	990	1,080	905	910
	Women	1,505	1,545	1,330	1,415	1,295	1,305

### P.18 Applications (all ages) by sex

Statistic	Sex	2010	2011	2012	2013	2014	2015
June deadline applications	Men	5,135	6,070	5,815	5,220	5,210	4,725
	Women	6,595	7,215	7,425	6,610	7,105	6,970
Offers	Men	3,495	4,165	3,395	4,070	4,060	3,400
	Women	3,465	3,770	3,310	4,460	4,910	4,805
Offer rate	Men	68.1%	68.7%	58.4%	77.9%	77.9%	72.0%
	Women	52.5%	52.2%	44.6%	67.5%	69.1%	68.9%

### P.19 Applicants (all ages) by POLAR3 quintile

Statistic	POLAR3 quintile	2010	2011	2012	2013	2014	2015
June deadline applicants	Quintile 1	1,735	1,970	2,070	1,890	2,070	1,925
	Quintile 2	2,320	2,705	2,795	2,565	2,745	2,755
	Quintile 3	2,575	3,030	3,085	2,715	2,870	2,775
	Quintile 4	1,660	1,830	1,885	1,675	1,745	1,645
	Quintile 5	1,305	1,495	1,525	1,300	1,290	1,255
Placed June deadline applicants	Quintile 1	325	305	235	295	275	265
	Quintile 2	470	525	415	495	455	475
	Quintile 3	635	600	495	585	580	540
	Quintile 4	285	295	220	255	220	230
	Quintile 5	170	200	145	175	155	145
All placed applicants	Quintile 1	455	440	380	395	365	355
	Quintile 2	660	710	600	680	590	615
	Quintile 3	890	850	770	795	735	745
	Quintile 4	425	455	315	355	290	300
	Quintile 5	345	345	250	255	220	195

### P.20 Applications (all ages) by POLAR3 quintile

Statistic	POLAR3 quintile	2010	2011	2012	2013	2014	2015
June deadline applications	Quintile 1	2,040	2,255	2,320	2,075	2,270	2,090
	Quintile 2	2,860	3,360	3,310	3,105	3,265	3,145
	Quintile 3	3,510	4,020	3,930	3,410	3,510	3,365
	Quintile 4	1,880	2,050	2,060	1,850	1,885	1,775
	Quintile 5	1,420	1,570	1,590	1,370	1,365	1,300
Offers	Quintile 1	1,075	1,215	1,055	1,340	1,505	1,380
	Quintile 2	1,670	2,015	1,625	2,220	2,390	2,235
	Quintile 3	2,210	2,495	2,060	2,555	2,640	2,410
	Quintile 4	1,140	1,240	1,085	1,340	1,400	1,265
	Quintile 5	855	955	865	1,055	1,020	910
Offer rate	Quintile 1	52.6%	53.8%	45.4%	64.7%	66.3%	66.0%
	Quintile 2	58.3%	59.9%	49.1%	71.6%	73.1%	71.0%
	Quintile 3	63.0%	62.0%	52.5%	74.8%	75.2%	71.6%
	Quintile 4	60.5%	60.6%	52.6%	72.4%	74.5%	71.2%
	Quintile 5	60.3%	61.0%	54.5%	77.1%	74.5%	69.8%

## P.21 Applicants (all ages) by ethnic group

Statistic	Ethnic group	2010	2011	2012	2013	2014	2015
June deadline applicants	Asian	3,715	4,360	4,465	4,120	4,330	4,170
	Black	1,275	1,460	1,505	1,330	1,275	1,330
	Mixed	270	310	345	285	310	345
	White	4,145	4,680	4,725	4,140	4,530	4,205
	Other	115	150	245	195	215	210
Placed June deadline applicants	Asian	935	955	740	950	855	880
	Black	175	175	140	175	165	145
	Mixed	50	50	45	45	45	50
	White	690	710	555	595	575	540
	Other	15	25	30	25	25	25
All placed applicants	Asian	1,350	1,345	1,170	1,315	1,155	1,240
	Black	310	325	270	255	225	195
	Mixed	70	70	70	70	60	65
	White	975	980	715	750	680	640
	Other	30	40	50	45	50	40

## P.22 Applications (all ages) by ethnic group

Statistic	Ethnic group	2010	2011	2012	2013	2014	2015
June deadline applications	Asian	5,135	5,975	5,775	5,280	5,470	5,080
	Black	1,405	1,590	1,600	1,440	1,335	1,380
	Mixed	310	350	375	330	340	385
	White	4,620	5,085	5,095	4,445	4,840	4,485
	Other	130	165	270	215	235	230
Offers	Asian	3,320	3,890	3,160	4,085	4,255	3,845
	Black	590	660	565	805	780	780
	Mixed	175	195	185	240	250	255
	White	2,735	3,025	2,595	3,150	3,455	3,100
	Other	70	95	135	165	175	150
Offer rate	Asian	64.6%	65.1%	54.7%	77.3%	77.8%	75.7%
	Black	42.0%	41.6%	35.4%	56.1%	58.5%	56.5%
	Mixed	55.8%	56.3%	49.6%	72.6%	72.8%	66.2%
	White	59.2%	59.5%	51.0%	70.8%	71.4%	69.1%
	Other	53.0%	56.9%	51.1%	76.9%	73.3%	65.4%

## Technical Notes and Definitions

### UCAS undergraduate scheme

#### Adjustment

Adjustment allows applicants who have met and exceeded the terms of their conditional firm offer to seek and find a place at another provider whilst keeping their place at their original firm choice provider.

#### Clearing

Clearing is a route for applicants that are not placed and holding no offers to find a place on courses with vacancies.

#### Cycle year

The UCAS application cycle which runs from September to October the following year. For example the 2015 cycle runs from September 2014 through to October 2015.

#### End of cycle

The point in the cycle to which the numbers in this report refer, and the point at which the cycle is closed such that no more applications or offers can be made, and no more applicants can be placed. Numbers reported at the end of cycle exclude information on a small number of applicants who cancelled during the cycle.

#### Extra

Applicants who are unsuccessful in obtaining an offer or decline all offers may be eligible to apply through Extra, where they can apply to one further course at a time. Extra operates from 25 February until early July. It provides applicants who are eligible the possibility of obtaining an offer before exam results are published and Clearing starts.

#### June 30 deadline

The deadline for main scheme applications. Applicants who apply after this date will go directly into Clearing.

#### Record of Prior Acceptance (RPA)

RPA is an acceptance route used when a provider informs UCAS of applicants it has accepted outside of the normal application process (e.g. individuals who have applied directly to the provider).

### Reporting groups

#### Ethnic group

High level grouping of ethnic origin as declared by the applicant: 'White', 'Black', 'Asian', 'Mixed', 'Other', 'Unknown'. Applicants who declare themselves as 'Unknown' ethnic origin are not reported in these tables, but are included in the associated csv data file.

#### POLAR3 quintile

Developed by HEFCE, POLAR3 classifies small areas across the UK into five groups according to their level of young participation in Higher Education. Each of these groups represents around 20 per cent of young people and is ranked from Quintile 1 (areas with the lowest young participation rates, considered as the most disadvantaged) to Quintile 5 (highest young participation rates, considered most advantaged). POLAR3 is based on the participation rates of young people between 2005 and 2009 who entered Higher Education between 2005-06 and 2010-11, therefore is most suitable for applicants aged 19 and under. These groups are assigned using the postcode declared by the applicant at the time of their application. If a UK postcode is invalid, considered unsafe for measurement or there is no link to Census geography possible then the applicant is not assigned to a quintile. Applicants with no POLAR3 quintile are not reported.

#### Sex

Sex as declared by the applicant.

### **SIMD quintile**

Scottish index of multiple deprivation (SIMD) for 2012 identifies small area concentrations of multiple deprivation across all of Scotland, providing a relative measure of deprivation amongst 6505 small areas (data zones) based on 7 socio-economic domains. These small areas are classified into five groups ranked from Quintile 1 (considered the most deprived) to Quintile 5 (considered least deprived), with equal populations in each quintile. Quintiles are assigned using the postcode declared by the applicant, applicants declaring invalid postcodes are classified as 'Not assigned' and are not reported.

SIMD is only defined for applicants domiciled in Scotland, therefore any applicants domiciled outside of Scotland cannot be assigned to an SIMD quintile and so are not reported for this measure.

SIMD is only reported for providers in Scotland. Application and entry rates by SIMD are reported in the 2015 End of Cycle Report and the 2016 cycle January deadline application rate report.

### **Statistics reported in the tables**

#### **All placed applicants**

The number of applicants placed for entry into higher education at the provider through one of their choices, including any choices made through Extra, or via Adjustment, Clearing or RPA.

#### **All placed applicants per 10,000 population**

The number of total UK domiciled 18 year old placed applicants for entry into higher education at the provider divided by the number of UK 18 year olds in the population, multiplied by 10,000. This gives the number of 18 year olds, for every 10,000 in the population, that were placed at the provider through one of their choices, including any choices made through Extra, or via Adjustment, Clearing or RPA. It is an alternative way of expressing the entry rate to a provider. By referencing the underlying population this statistic shows how the number of placed applicants is changing in relation to the available pool of potential applicants and so gives the chance that somebody from the group will be placed at a provider.

This statistic is only reported for 18 year olds.

#### **Average offer rate**

The offer rate that you might expect if the predicted grades and subject choice of applicants were the only factors that influenced whether an applicant was made an offer by the provider. The average offer rate is calculated by dividing applicants according to their specific combination of grades (for A levels the best three predicted grades are used, for BTECs, International Baccalaureate and Scottish Highers and Advanced Highers, predicted grades along with any grades already achieved upon applying are used) and subject choice. For each combination the number of main scheme offers is divided by the number of main scheme applications, to give an overall offer rate. This is then multiplied by the number of applications made by the group for which the average offer rate is being calculated (for example POLAR3 quintile 1), to give an average number of offers for that group. These average number of offers are then added together across all combinations of predicted grade and subject and divided by the number of main scheme applications from the group to give the average offer rate.

The average offer rate does not attempt to control for any other factors that may play a part in the decision to make an offer, such as the subject of the qualifications studied, their relevance to a course, or the grade in each subject; higher numbers of A levels being studied; the exact profile of grades predicted; personal statements; teacher references; interviews; or any other criteria (such as work experience or portfolios) that may be part of the admissions decision.

This statistic is only reported for 18 year olds.



### Contribution of group to the average offer rate

The way in which the average offer rate is defined means that the pattern of application and offers of a group (for example POLAR3 quintile 1) will always contribute, in part, to the average offer rate for that group. When this contribution is large, the average offer rate will mainly reflect the patterns for the group, meaning that the value of the average offer rate will be similar to the offer rate, the percentage point difference statistic will be small, and any real difference between the offer rate and what might be expected given the predicted grades and subject choices of the applicants will be difficult to detect.

Values of the contribution of group to the average offer rate range between 0 and 1. The closer the value is to 1 the greater the contribution a group makes to its own average offer rate.

This statistic is only reported for 18 year olds.

### Placed June deadline applicants

An applicant who has been placed for entry into higher education at the provider through a June deadline application.

### Placed June deadline applicants per 10,000 population

The number of UK domiciled 18 year old placed June deadline applicants at the provider divided by the number of UK 18 year olds in the population, multiplied by 10,000. This gives the number of 18 year olds, for every 10,000 in the population, that were placed at the provider through one of their June deadline applications. It is an alternative way of expressing the entry rate to a provider, but for placed June deadline applicants only. By referencing the underlying population this statistic shows how the number of placed June deadline applicants is changing in relation to the available pool of potential 18 year old applicants and so gives the chance that somebody from the group will be placed at a provider through a June deadline application.

This statistic is only reported for 18 year olds.

### June deadline applications

An application (or choice) to a course in higher education to the provider that is made by the June 30 deadline. Each applicant can make up to five choices this way. The number of June deadline applications does not include choices made through the following routes: Clearing, Extra, Adjustment and RPAs. Applications made to October deadline courses received after the October deadline are not included in these statistics.

### June deadline applicants

The number of applicants that made at least one application to the provider by the June 30 deadline.

### June deadline applicants per 10,000 population

The number of UK domiciled 18 year old June deadline applicants to the provider divided by the number of UK 18 year olds in the population, multiplied by 10,000. This gives the number of 18 year olds, for every 10,000 in the population, who applied by the June 30 deadline. It is equivalent to the application rate. By referencing the underlying population this statistic shows how the number of June deadline applicants is changing in relation to the available pool of potential 18 year old applicants and so gives the chance that somebody from the group will apply to a provider by the June 30 deadline.

This statistic is only reported for 18 year olds.

### Offers

An offer is defined as a provider's decision in response to an application to offer a place to an applicant, often subject to the applicant satisfying academic and/or other criteria, via a June deadline application (i.e. does not cover choices made through the following routes: Clearing, Extra, Adjustment and RPAs).

### Offer rate

The number of offers made divided by the number of June deadline applications. This gives the proportion of all June deadline applications to the provider that received an offer.

### Percentage point difference between offer rate and average offer rate

The offer rate minus the average offer rate.

The percentage point difference can be compared to the expected range of statistical variation resulting from the calculation of the average offer rate using the Average Offer Rate Lookup Table. Where the value of the percentage point difference lies outside of this range, the percentage point difference may be considered to represent a real difference between the offer rate and the average offer rate.

### Other definitions

#### Age

This analysis uses country-specific age definitions that align with the cut off points for school and college cohorts within the different administrations of the UK. For England and Wales, ages are defined on the 31 August, for Northern Ireland on the 1 July and for Scotland on the 28 February the following year. Defining ages in this way matches the assignment of children to school cohorts. For applicants outside of the UK a cohort cut off of 31 August has been used.

#### Provider

A higher education provider - a university or college.

#### UK domiciled

Declared area of permanent residence within England, Northern Ireland, Scotland and Wales. Applicants from the Channel Islands and Isle of Man are not included.