

C85 Coventry University

Cycle years: 2010 - 2015

Cycle Reference Point: End of Cycle

Applicant coverage: UK domiciled

Reporting groups: Sex, POLAR3, ethnic group

Applicant statistics: June deadline applicants, placed June deadline applicants, all placed applicants, June deadline applicants per 10,000 population, placed June deadline applicants per 10,000 population, all placed applicants per 10,000 population

Application statistics: June deadline applications, offers, offer rate, average offer rate, percentage point difference between offer rate and average offer rate, contribution of group to the average offer rate

Non-disclosure controls: To avoid the disclosure of information about any individual the following measures are taken

- Applicants, placed applicants, applications and offers are rounded to the nearest 5.
- Applicants/placed applicants per 10,000 population figures are reported as 0 if the applicant/placed applicant figures are rounded to 0.
- All statistics related to the offer rate are not reported when the number of applications for a group is less than 10. The percentage point difference between the offer rate and the average offer rate is not reported when the number of applications for a group is less than 50.
- Offer rates are reported as 0% if there are fewer than 5 offers, and 100% if the number of offers is within 5 of the number of applications. When the offer rate is reported as 0% or 100%, it is reported in italics.

Contents:

18 year old applicants:	P.1
18 year old applications:	P.2
18 year old applicants by sex:	P.3
18 year old applications by sex:	P.4
18 year old applicants by POLAR3 quintile:	P.7
18 year old applications by POLAR3 quintile:	P.8
18 year old applicants by ethnic group:	P.11
18 year old applications by ethnic group:	P.12
Applicants (all ages):	P.15
Applications (all ages):	P.16
Applicants (all ages) by sex:	P.17
Applications (all ages) by sex:	P.18
Applicants (all ages) by POLAR3 quintile:	P.19
Applications (all ages) by POLAR3 quintile:	P.20
Applicants (all ages) by ethnic group:	P.21
Applications (all ages) by ethnic group:	P.22

P.1 18 year old applicants

Statistic	2010	2011	2012	2013	2014	2015
June deadline applicants	10,810	11,140	11,540	13,410	14,855	15,260
Placed June deadline applicants	1,615	1,545	1,800	2,085	2,290	2,375
All placed applicants	2,385	2,490	2,450	2,620	2,835	3,195
June deadline applicants per 10,000 population	136.9	144.7	149.2	176.2	197.2	199.2
Placed June deadline applicants per 10,000	20.4	20.0	23.2	27.4	30.4	31.0
All placed applicants per 10,000 population	30.2	32.3	31.6	34.4	37.7	41.7

P.2 18 year old applications

Statistic	2010	2011	2012	2013	2014	2015
June deadline applications	11,525	11,790	12,075	13,980	15,500	15,875
Offers	8,880	8,295	9,315	10,940	12,390	12,710
Offer rate	77.0%	70.3%	77.1%	78.2%	79.9%	80.1%

P.3 18 year old applicants by sex

Statistic	Sex	2010	2011	2012	2013	2014	2015
June deadline applicants	Men	5,015	5,185	5,010	6,155	7,000	7,300
	Women	5,795	5,960	6,530	7,255	7,855	7,960
Placed June deadline applicants	Men	810	730	825	1,025	1,200	1,275
	Women	805	815	970	1,060	1,090	1,100
All placed applicants	Men	1,175	1,230	1,135	1,235	1,470	1,670
	Women	1,210	1,260	1,315	1,385	1,365	1,525
June deadline applicants per 10,000 population	Men	124.8	131.7	126.3	157.7	180.8	186.0
	Women	149.5	158.2	173.3	195.8	214.6	213.0
Placed June deadline applicants per 10,000 population	Men	20.1	18.5	20.8	26.2	30.9	32.5
	Women	20.8	21.6	25.8	28.7	29.8	29.5
All placed applicants per 10,000 population	Men	29.3	31.2	28.6	31.6	38.0	42.5
	Women	31.2	33.5	34.9	37.4	37.3	40.8

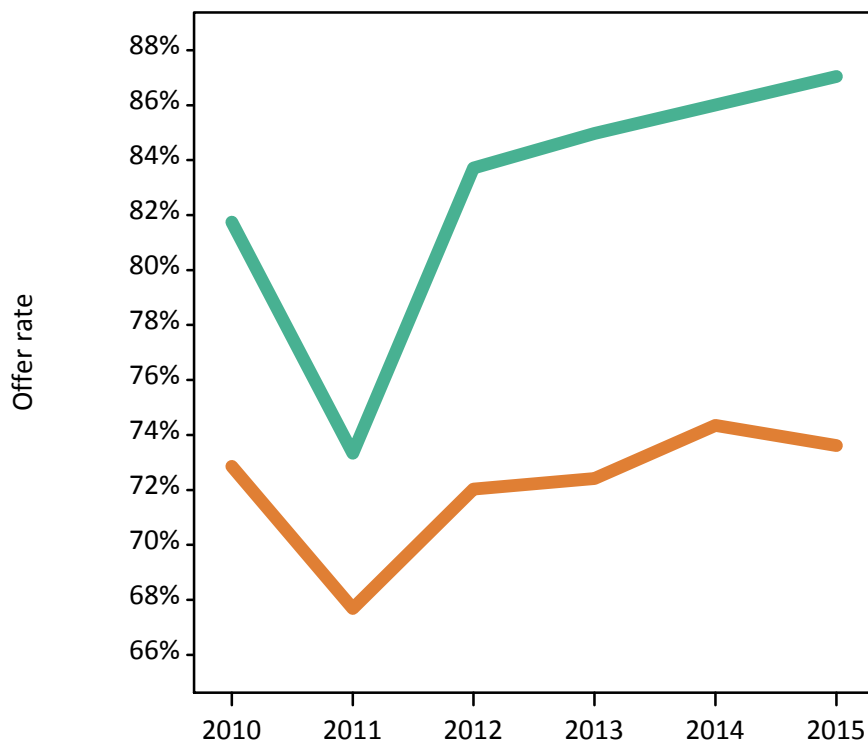
P.4 18 year old applications by sex

Statistic	Sex	2010	2011	2012	2013	2014	2015
June deadline applications	Men	5,430	5,565	5,285	6,475	7,405	7,635
	Women	6,095	6,225	6,790	7,510	8,095	8,240
Offers	Men	4,435	4,080	4,425	5,500	6,370	6,645
	Women	4,440	4,215	4,890	5,435	6,020	6,065
Offer rate	Men	81.7%	73.3%	83.7%	85.0%	86.0%	87.0%
	Women	72.9%	67.7%	72.0%	72.4%	74.3%	73.6%
Average offer rate	Men	81.7%	73.7%	84.0%	85.0%	86.4%	87.3%
	Women	72.9%	67.3%	71.8%	72.4%	74.0%	73.4%
Percentage point difference between offer rate and average offer rate	Men	0.0	-0.4	-0.3	-0.1	-0.4	-0.2
	Women	-0.0	0.4	0.2	0.1	0.3	0.2
Contribution of group to the average offer rate	Men	0.656	0.640	0.623	0.647	0.657	0.655
	Women	0.694	0.678	0.707	0.696	0.687	0.681

P.5 18 year old offer rate by sex

Note: The line for a group is not plotted when that group made fewer than 10 applications in any of the years from 2010-2015.

Men
Women



P.6 Percentage point difference between 18 year old offer rate and average offer rate by sex

Note: The line for a group is not plotted when that group made fewer than 50 applications in any of the years from 2010-2015.

Men
Women



P.7 18 year old applicants by POLAR3 quintile

Statistic	POLAR3 quintile	2010	2011	2012	2013	2014	2015
June deadline applicants	Quintile 1	1,270	1,305	1,350	1,515	1,695	1,810
	Quintile 2	2,245	2,370	2,375	2,755	3,230	3,260
	Quintile 3	2,465	2,575	2,815	3,320	3,610	3,670
	Quintile 4	2,290	2,390	2,360	2,895	3,075	3,160
	Quintile 5	2,530	2,500	2,620	2,905	3,225	3,315
Placed June deadline applicants	Quintile 1	160	180	205	210	250	270
	Quintile 2	360	340	375	480	570	535
	Quintile 3	385	375	465	550	550	550
	Quintile 4	310	330	365	405	450	530
	Quintile 5	395	315	385	445	470	490
All placed applicants	Quintile 1	225	250	260	255	305	345
	Quintile 2	505	500	515	600	700	695
	Quintile 3	565	590	645	685	675	750
	Quintile 4	500	540	480	510	560	690
	Quintile 5	590	610	545	570	590	710
June deadline applicants per 10,000 population	Quintile 1	85.8	90.7	94.8	108.8	121.9	129.2
	Quintile 2	146.1	157.6	158.5	187.0	220.8	219.5
	Quintile 3	155.0	167.2	182.4	217.6	239.7	238.9
	Quintile 4	143.7	152.5	148.6	185.2	199.5	202.0
	Quintile 5	149.3	151.0	156.0	175.7	197.7	198.1
Placed June deadline applicants per 10,000 population	Quintile 1	10.9	12.7	14.5	14.9	18.0	19.2
	Quintile 2	23.3	22.6	24.9	32.4	39.0	36.1
	Quintile 3	24.3	24.3	30.1	35.9	36.4	35.7
	Quintile 4	19.5	21.2	22.9	25.9	29.1	33.9
	Quintile 5	23.4	19.0	23.0	26.8	28.8	29.3
All placed applicants per 10,000 population	Quintile 1	15.1	17.4	18.1	18.2	21.8	24.5
	Quintile 2	32.8	33.3	34.5	40.9	48.0	46.9
	Quintile 3	35.7	38.4	41.8	44.8	44.9	49.0
	Quintile 4	31.5	34.5	30.3	32.5	36.4	44.0
	Quintile 5	34.8	36.7	32.4	34.5	36.2	42.4

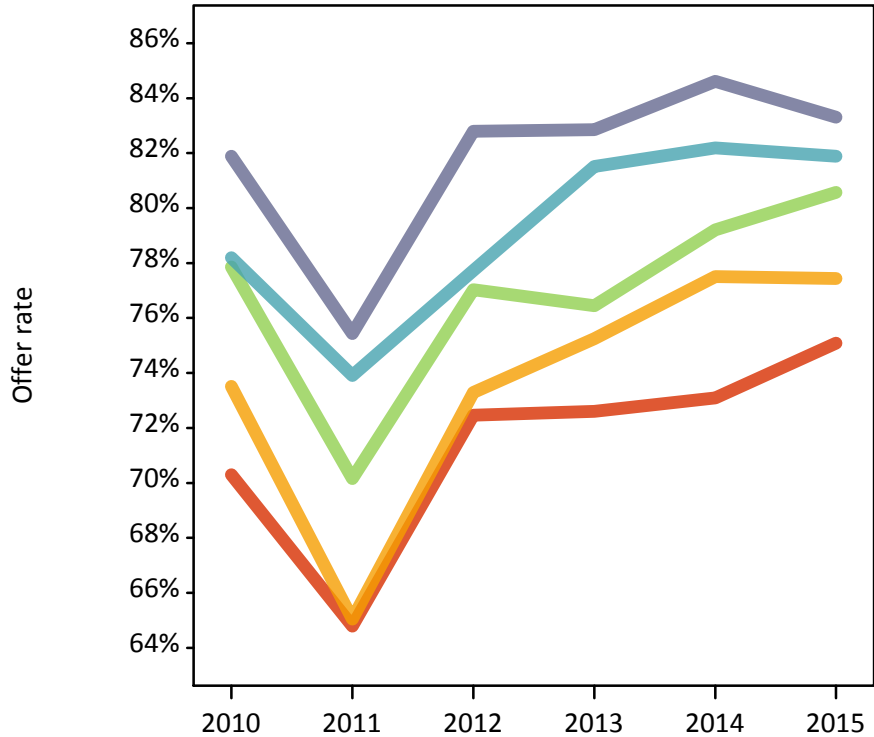
P.8 18 year old applications by POLAR3 quintile

Statistic	POLAR3 quintile	2010	2011	2012	2013	2014	2015
June deadline applications	Quintile 1	1,350	1,365	1,410	1,565	1,745	1,870
	Quintile 2	2,475	2,590	2,510	2,950	3,440	3,470
	Quintile 3	2,615	2,720	2,965	3,465	3,790	3,830
	Quintile 4	2,410	2,490	2,450	2,990	3,175	3,250
	Quintile 5	2,665	2,615	2,720	2,990	3,335	3,410
Offers	Quintile 1	950	885	1,020	1,135	1,275	1,405
	Quintile 2	1,820	1,685	1,840	2,220	2,670	2,685
	Quintile 3	2,035	1,905	2,285	2,650	3,000	3,085
	Quintile 4	1,885	1,840	1,905	2,440	2,610	2,665
	Quintile 5	2,185	1,970	2,250	2,480	2,820	2,840
Offer rate	Quintile 1	70.3%	64.8%	72.5%	72.6%	73.1%	75.1%
	Quintile 2	73.5%	65.0%	73.3%	75.2%	77.5%	77.4%
	Quintile 3	77.9%	70.2%	77.0%	76.5%	79.2%	80.6%
	Quintile 4	78.2%	73.9%	77.7%	81.5%	82.2%	81.9%
	Quintile 5	81.9%	75.4%	82.8%	82.9%	84.6%	83.3%
Average offer rate	Quintile 1	72.7%	65.8%	73.3%	74.5%	75.4%	76.5%
	Quintile 2	74.5%	65.9%	73.7%	75.0%	78.1%	77.5%
	Quintile 3	77.8%	70.4%	77.2%	77.3%	79.9%	80.8%
	Quintile 4	77.9%	73.7%	78.0%	80.7%	81.2%	81.5%
	Quintile 5	80.1%	74.0%	81.5%	82.0%	83.0%	82.5%
Percentage point difference between offer rate and average offer rate	Quintile 1	-2.4	-1.0	-0.9	-1.9	-2.3	-1.4
	Quintile 2	-1.0	-0.9	-0.4	0.2	-0.6	-0.1
	Quintile 3	0.0	-0.3	-0.2	-0.8	-0.7	-0.2
	Quintile 4	0.3	0.2	-0.3	0.8	1.0	0.4
	Quintile 5	1.8	1.5	1.3	0.9	1.6	0.8
Contribution of group to the average offer rate	Quintile 1	0.202	0.203	0.190	0.179	0.174	0.180
	Quintile 2	0.291	0.299	0.285	0.276	0.286	0.281
	Quintile 3	0.294	0.299	0.307	0.300	0.296	0.290
	Quintile 4	0.281	0.281	0.265	0.277	0.262	0.265
	Quintile 5	0.312	0.302	0.309	0.291	0.287	0.285

P.9 18 year old offer rate by POLAR3 quintile

Note: The line for a group is not plotted when that group made fewer than 10 applications in any of the years from 2010-2015.

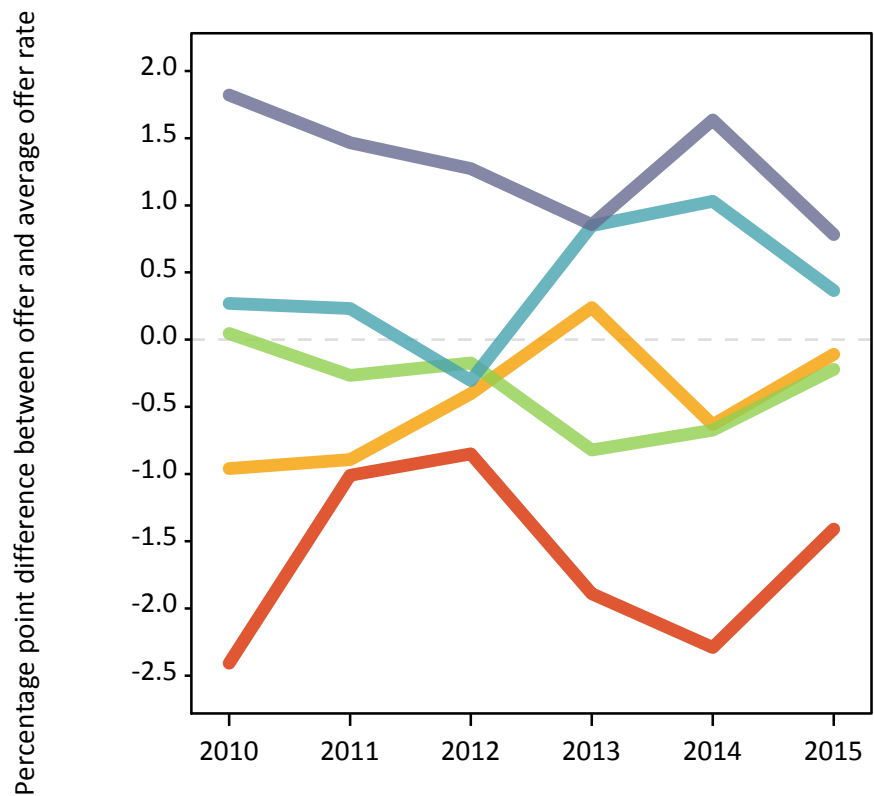
- Quintile 1
- Quintile 2
- Quintile 3
- Quintile 4
- Quintile 5



P.10 Percentage point difference between 18 year old offer rate and average offer rate by POLAR3 quintile

Note: The line for a group is not plotted when that group made fewer than 50 applications in any of the years from 2010-2015.

- Quintile 1
- Quintile 2
- Quintile 3
- Quintile 4
- Quintile 5



P.11 18 year old applicants by ethnic group

Statistic	Ethnic group	2010	2011	2012	2013	2014	2015
June deadline applicants	Asian	1,660	1,775	2,035	2,495	2,930	2,975
	Black	975	1,185	1,460	2,180	2,395	2,355
	Mixed	390	415	415	580	665	730
	White	7,660	7,625	7,465	7,915	8,555	8,835
	Other	80	100	125	195	230	290
Placed June deadline applicants	Asian	255	225	340	405	465	465
	Black	135	160	260	420	405	370
	Mixed	60	55	70	85	100	110
	White	1,140	1,085	1,100	1,140	1,265	1,355
	Other	15	10	20	25	40	55
All placed applicants	Asian	450	470	525	550	630	700
	Black	285	365	450	585	570	590
	Mixed	90	105	95	115	120	150
	White	1,525	1,515	1,330	1,315	1,445	1,660
	Other	30	25	30	40	55	75
June deadline applicants per 10,000 population	Asian	268.8	282.0	314.1	378.1	432.4	420.2
	Black	373.2	433.1	518.8	734.6	790.8	740.7
	Mixed	168.8	170.5	160.1	214.1	231.5	236.8
	White	114.2	117.7	115.6	125.8	138.7	141.8
	Other	106.5	122.2	141.3	217.3	247.1	299.1
Placed June deadline applicants per 10,000 population	Asian	41.1	35.7	52.5	61.6	68.7	65.7
	Black	52.3	58.2	92.3	141.5	133.3	116.9
	Mixed	26.8	23.1	27.6	30.7	34.4	36.3
	White	17.0	16.7	17.1	18.1	20.5	21.8
	Other	18.2	14.8	21.5	29.8	44.0	56.1
All placed applicants per 10,000 population	Asian	73.0	74.7	81.2	83.4	92.8	98.8
	Black	108.9	132.8	160.2	197.7	188.0	185.1
	Mixed	38.4	42.5	36.9	42.5	41.4	49.0
	White	22.7	23.4	20.6	20.9	23.4	26.6
	Other	37.7	29.6	35.0	44.1	56.9	75.8

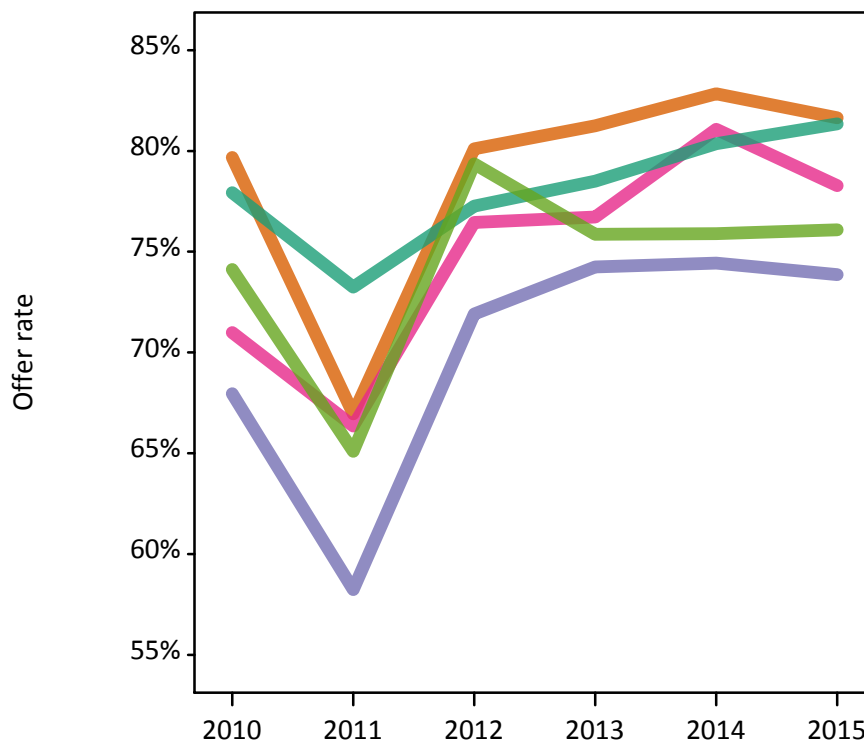
P.12 18 year old applications by ethnic group

Statistic	Ethnic group	2010	2011	2012	2013	2014	2015
June deadline applications	Asian	1,830	1,930	2,185	2,655	3,130	3,150
	Black	1,010	1,200	1,490	2,225	2,455	2,420
	Mixed	415	430	430	595	685	755
	White	8,140	8,070	7,805	8,250	8,900	9,170
	Other	85	105	125	205	250	295
Offers	Asian	1,460	1,295	1,750	2,160	2,590	2,570
	Black	685	700	1,070	1,650	1,830	1,785
	Mixed	295	285	330	455	555	590
	White	6,345	5,910	6,030	6,480	7,155	7,460
	Other	65	70	100	155	190	225
Offer rate	Asian	79.7%	67.0%	80.1%	81.3%	82.8%	81.7%
	Black	68.0%	58.2%	71.9%	74.2%	74.4%	73.9%
	Mixed	71.0%	66.4%	76.5%	76.7%	81.1%	78.3%
	White	77.9%	73.2%	77.3%	78.5%	80.4%	81.3%
	Other	74.1%	65.1%	79.4%	75.9%	75.9%	76.1%
Average offer rate	Asian	80.4%	68.4%	80.4%	79.8%	83.0%	82.1%
	Black	73.0%	63.7%	76.9%	77.5%	78.8%	78.5%
	Mixed	73.9%	70.5%	77.3%	77.5%	79.9%	79.1%
	White	76.9%	71.8%	76.1%	78.0%	79.1%	79.8%
	Other	79.2%	68.4%	82.7%	77.8%	80.9%	81.2%
Percentage point difference between offer rate and average offer rate	Asian	-0.7	-1.4	-0.3	1.5	-0.2	-0.4
	Black	-5.0	-5.5	-5.0	-3.3	-4.4	-4.6
	Mixed	-2.9	-4.2	-0.8	-0.8	1.2	-0.8
	White	1.0	1.4	1.1	0.5	1.3	1.6
	Other	-5.1	-3.3	-3.4	-1.9	-5.0	-5.1
Contribution of group to the average offer rate	Asian	0.280	0.292	0.303	0.294	0.292	0.302
	Black	0.194	0.195	0.215	0.251	0.241	0.240
	Mixed	0.122	0.125	0.109	0.102	0.112	0.107
	White	0.758	0.740	0.710	0.661	0.644	0.657
	Other	0.117	0.087	0.105	0.080	0.087	0.087

P.13 18 year old offer rate by ethnic group

Note: The line for a group is not plotted when that group made fewer than 10 applications in any of the years from 2010-2015.

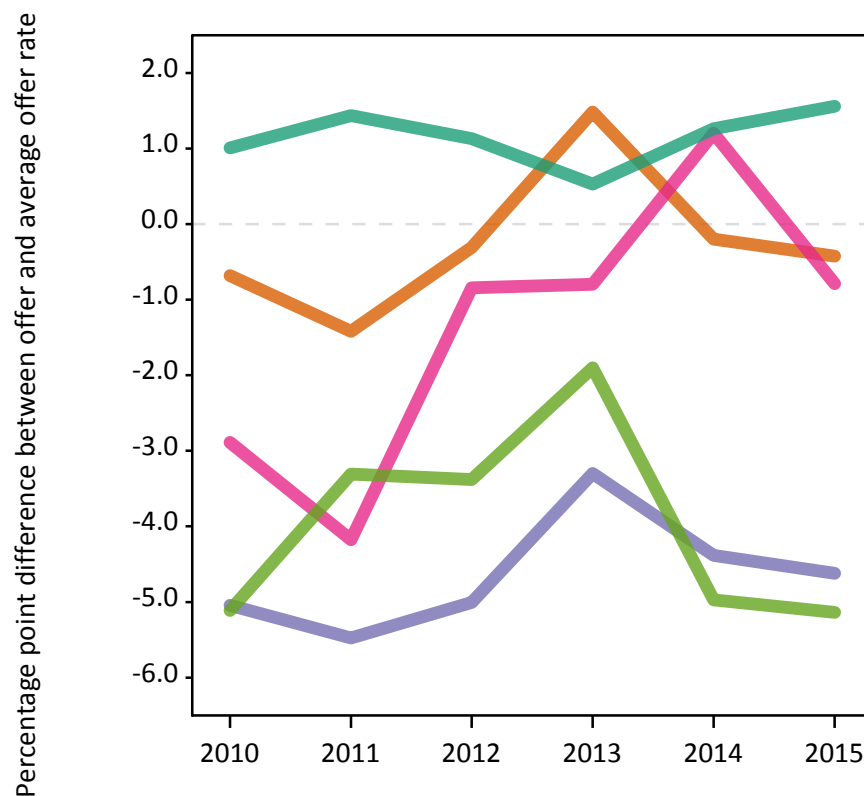
- Asian
- Black
- Mixed
- White
- Other



P.14 Percentage point difference between 18 year old offer rate and average offer rate by ethnic group

Note: The line for a group is not plotted when that group made fewer than 50 applications in any of the years from 2010-2015.

- Asian
- Black
- Mixed
- White
- Other



P.15 Applicants (all ages)

Statistic	2010	2011	2012	2013	2014	2015
June deadline applicants	21,580	22,745	23,170	26,805	29,630	30,125
Placed June deadline applicants	3,325	2,995	3,370	4,055	4,440	4,645
All placed applicants	4,780	4,565	4,900	5,215	5,635	6,440

P.16 Applications (all ages)

Statistic	2010	2011	2012	2013	2014	2015
June deadline applications	23,735	24,685	24,800	28,550	31,705	32,015
Offers	14,510	13,480	15,330	18,090	20,830	21,280
Offer rate	61.1%	54.6%	61.8%	63.4%	65.7%	66.5%

P.17 Applicants (all ages) by sex

Statistic	Sex	2010	2011	2012	2013	2014	2015
June deadline applicants	Men	9,840	10,405	9,930	11,985	13,295	13,870
	Women	11,740	12,345	13,240	14,820	16,335	16,255
Placed June deadline applicants	Men	1,520	1,380	1,545	1,980	2,215	2,460
	Women	1,805	1,620	1,820	2,075	2,225	2,190
All placed applicants	Men	2,250	2,220	2,300	2,485	2,790	3,410
	Women	2,535	2,345	2,600	2,730	2,845	3,030

P.18 Applications (all ages) by sex

Statistic	Sex	2010	2011	2012	2013	2014	2015
June deadline applications	Men	10,910	11,395	10,720	12,915	14,405	14,860
	Women	12,820	13,290	14,080	15,635	17,300	17,155
Offers	Men	7,305	6,680	7,550	9,345	10,760	11,305
	Women	7,205	6,800	7,780	8,745	10,070	9,975
Offer rate	Men	67.0%	58.7%	70.4%	72.4%	74.7%	76.1%
	Women	56.2%	51.2%	55.3%	55.9%	58.2%	58.1%

P.19 Applicants (all ages) by POLAR3 quintile

Statistic	POLAR3 quintile	2010	2011	2012	2013	2014	2015
June deadline applicants	Quintile 1	2,825	3,070	3,185	3,495	3,930	4,080
	Quintile 2	5,155	5,440	5,500	6,300	7,090	7,125
	Quintile 3	5,070	5,235	5,590	6,565	7,275	7,230
	Quintile 4	4,100	4,335	4,230	5,150	5,620	5,680
	Quintile 5	4,405	4,630	4,615	5,245	5,660	5,925
Placed June deadline applicants	Quintile 1	395	350	405	460	510	565
	Quintile 2	870	785	865	1,040	1,195	1,170
	Quintile 3	825	700	870	1,025	1,095	1,130
	Quintile 4	565	560	595	725	795	855
	Quintile 5	675	600	630	795	835	915
All placed applicants	Quintile 1	520	475	555	565	635	720
	Quintile 2	1,230	1,070	1,260	1,345	1,515	1,600
	Quintile 3	1,160	1,070	1,290	1,335	1,370	1,560
	Quintile 4	865	905	840	920	1,015	1,185
	Quintile 5	1,005	1,040	945	1,045	1,085	1,355

P.20 Applications (all ages) by POLAR3 quintile

Statistic	POLAR3 quintile	2010	2011	2012	2013	2014	2015
June deadline applications	Quintile 1	3,105	3,300	3,385	3,675	4,135	4,290
	Quintile 2	5,965	6,190	6,075	6,975	7,905	7,825
	Quintile 3	5,555	5,685	5,995	6,985	7,800	7,700
	Quintile 4	4,370	4,560	4,440	5,370	5,855	5,905
	Quintile 5	4,710	4,910	4,860	5,495	5,945	6,205
Offers	Quintile 1	1,655	1,510	1,790	1,995	2,260	2,470
	Quintile 2	3,325	3,020	3,485	4,025	4,845	4,865
	Quintile 3	3,405	3,080	3,765	4,445	5,135	5,135
	Quintile 4	2,835	2,770	2,885	3,720	4,165	4,200
	Quintile 5	3,280	3,080	3,380	3,870	4,380	4,555
Offer rate	Quintile 1	53.3%	45.7%	52.9%	54.3%	54.7%	57.6%
	Quintile 2	55.7%	48.8%	57.3%	57.8%	61.3%	62.2%
	Quintile 3	61.3%	54.2%	62.9%	63.7%	65.8%	66.7%
	Quintile 4	64.9%	60.8%	65.0%	69.3%	71.2%	71.2%
	Quintile 5	69.6%	62.8%	69.6%	70.5%	73.6%	73.4%

P.21 Applicants (all ages) by ethnic group

Statistic	Ethnic group	2010	2011	2012	2013	2014	2015
June deadline applicants	Asian	3,595	3,780	4,195	5,150	5,850	5,990
	Black	3,515	3,985	4,540	5,620	6,205	6,210
	Mixed	855	885	880	1,195	1,370	1,480
	White	13,280	13,725	13,065	14,215	15,460	15,605
	Other	190	245	365	460	545	610
Placed June deadline applicants	Asian	520	440	645	825	925	885
	Black	400	385	595	820	835	835
	Mixed	120	100	130	150	215	240
	White	2,240	2,035	1,925	2,165	2,350	2,560
	Other	25	25	55	70	90	90
All placed applicants	Asian	905	885	1,065	1,140	1,250	1,420
	Black	715	720	1,100	1,205	1,200	1,305
	Mixed	170	170	180	220	275	315
	White	2,885	2,650	2,390	2,505	2,735	3,110
	Other	60	45	110	105	120	150

P.22 Applications (all ages) by ethnic group

Statistic	Ethnic group	2010	2011	2012	2013	2014	2015
June deadline applications	Asian	4,055	4,165	4,575	5,585	6,375	6,445
	Black	3,905	4,330	4,860	5,965	6,555	6,590
	Mixed	920	935	940	1,270	1,480	1,555
	White	14,475	14,835	13,885	15,060	16,475	16,525
	Other	210	265	385	490	595	650
Offers	Asian	2,655	2,250	3,210	3,940	4,630	4,620
	Black	1,555	1,425	2,285	3,000	3,490	3,460
	Mixed	520	495	570	770	985	995
	White	9,575	9,110	8,950	9,975	11,195	11,620
	Other	120	125	240	315	385	430
Offer rate	Asian	65.5%	54.0%	70.1%	70.5%	72.6%	71.7%
	Black	39.9%	32.9%	47.0%	50.3%	53.2%	52.5%
	Mixed	56.7%	52.9%	60.6%	60.7%	66.7%	64.1%
	White	66.1%	61.4%	64.5%	66.2%	67.9%	70.3%
	Other	56.6%	47.6%	61.8%	64.1%	64.8%	66.6%

Technical Notes and Definitions

UCAS undergraduate scheme

Adjustment

Adjustment allows applicants who have met and exceeded the terms of their conditional firm offer to seek and find a place at another provider whilst keeping their place at their original firm choice provider.

Clearing

Clearing is a route for applicants that are not placed and holding no offers to find a place on courses with vacancies.

Cycle year

The UCAS application cycle which runs from September to October the following year. For example the 2015 cycle runs from September 2014 through to October 2015.

End of cycle

The point in the cycle to which the numbers in this report refer, and the point at which the cycle is closed such that no more applications or offers can be made, and no more applicants can be placed. Numbers reported at the end of cycle exclude information on a small number of applicants who cancelled during the cycle.

Extra

Applicants who are unsuccessful in obtaining an offer or decline all offers may be eligible to apply through Extra, where they can apply to one further course at a time. Extra operates from 25 February until early July. It provides applicants who are eligible the possibility of obtaining an offer before exam results are published and Clearing starts.

June 30 deadline

The deadline for main scheme applications. Applicants who apply after this date will go directly into Clearing.

Record of Prior Acceptance (RPA)

RPA is an acceptance route used when a provider informs UCAS of applicants it has accepted outside of the normal application process (e.g. individuals who have applied directly to the provider).

Reporting groups

Ethnic group

High level grouping of ethnic origin as declared by the applicant: 'White', 'Black', 'Asian', 'Mixed', 'Other', 'Unknown'. Applicants who declare themselves as 'Unknown' ethnic origin are not reported in these tables, but are included in the associated csv data file.

POLAR3 quintile

Developed by HEFCE, POLAR3 classifies small areas across the UK into five groups according to their level of young participation in Higher Education. Each of these groups represents around 20 per cent of young people and is ranked from Quintile 1 (areas with the lowest young participation rates, considered as the most disadvantaged) to Quintile 5 (highest young participation rates, considered most advantaged). POLAR3 is based on the participation rates of young people between 2005 and 2009 who entered Higher Education between 2005-06 and 2010-11, therefore is most suitable for applicants aged 19 and under. These groups are assigned using the postcode declared by the applicant at the time of their application. If a UK postcode is invalid, considered unsafe for measurement or there is no link to Census geography possible then the applicant is not assigned to a quintile. Applicants with no POLAR3 quintile are not reported.

Sex

Sex as declared by the applicant.

SIMD quintile

Scottish index of multiple deprivation (SIMD) for 2012 identifies small area concentrations of multiple deprivation across all of Scotland, providing a relative measure of deprivation amongst 6505 small areas (data zones) based on 7 socio-economic domains. These small areas are classified into five groups ranked from Quintile 1 (considered the most deprived) to Quintile 5 (considered least deprived), with equal populations in each quintile. Quintiles are assigned using the postcode declared by the applicant, applicants declaring invalid postcodes are classified as 'Not assigned' and are not reported.

SIMD is only defined for applicants domiciled in Scotland, therefore any applicants domiciled outside of Scotland cannot be assigned to an SIMD quintile and so are not reported for this measure.

SIMD is only reported for providers in Scotland. Application and entry rates by SIMD are reported in the 2015 End of Cycle Report and the 2016 cycle January deadline application rate report.

Statistics reported in the tables

All placed applicants

The number of applicants placed for entry into higher education at the provider through one of their choices, including any choices made through Extra, or via Adjustment, Clearing or RPA.

All placed applicants per 10,000 population

The number of total UK domiciled 18 year old placed applicants for entry into higher education at the provider divided by the number of UK 18 year olds in the population, multiplied by 10,000. This gives the number of 18 year olds, for every 10,000 in the population, that were placed at the provider through one of their choices, including any choices made through Extra, or via Adjustment, Clearing or RPA. It is an alternative way of expressing the entry rate to a provider. By referencing the underlying population this statistic shows how the number of placed applicants is changing in relation to the available pool of potential applicants and so gives the chance that somebody from the group will be placed at a provider.

This statistic is only reported for 18 year olds.

Average offer rate

The offer rate that you might expect if the predicted grades and subject choice of applicants were the only factors that influenced whether an applicant was made an offer by the provider. The average offer rate is calculated by dividing applicants according to their specific combination of grades (for A levels the best three predicted grades are used, for BTECs, International Baccalaureate and Scottish Highers and Advanced Highers, predicted grades along with any grades already achieved upon applying are used) and subject choice. For each combination the number of main scheme offers is divided by the number of main scheme applications, to give an overall offer rate. This is then multiplied by the number of applications made by the group for which the average offer rate is being calculated (for example POLAR3 quintile 1), to give an average number of offers for that group. These average number of offers are then added together across all combinations of predicted grade and subject and divided by the number of main scheme applications from the group to give the average offer rate.

The average offer rate does not attempt to control for any other factors that may play a part in the decision to make an offer, such as the subject of the qualifications studied, their relevance to a course, or the grade in each subject; higher numbers of A levels being studied; the exact profile of grades predicted; personal statements; teacher references; interviews; or any other criteria (such as work experience or portfolios) that may be part of the admissions decision.

This statistic is only reported for 18 year olds.

Contribution of group to the average offer rate

The way in which the average offer rate is defined means that the pattern of application and offers of a group (for example POLAR3 quintile 1) will always contribute, in part, to the average offer rate for that group. When this contribution is large, the average offer rate will mainly reflect the patterns for the group, meaning that the value of the average offer rate will be similar to the offer rate, the percentage point difference statistic will be small, and any real difference between the offer rate and what might be expected given the predicted grades and subject choices of the applicants will be difficult to detect.

Values of the contribution of group to the average offer rate range between 0 and 1. The closer the value is to 1 the greater the contribution a group makes to its own average offer rate.

This statistic is only reported for 18 year olds.

Placed June deadline applicants

An applicant who has been placed for entry into higher education at the provider through a June deadline application.

Placed June deadline applicants per 10,000 population

The number of UK domiciled 18 year old placed June deadline applicants at the provider divided by the number of UK 18 year olds in the population, multiplied by 10,000. This gives the number of 18 year olds, for every 10,000 in the population, that were placed at the provider through one of their June deadline applications. It is an alternative way of expressing the entry rate to a provider, but for placed June deadline applicants only. By referencing the underlying population this statistic shows how the number of placed June deadline applicants is changing in relation to the available pool of potential 18 year old applicants and so gives the chance that somebody from the group will be placed at a provider through a June deadline application.

This statistic is only reported for 18 year olds.

June deadline applications

An application (or choice) to a course in higher education to the provider that is made by the June 30 deadline. Each applicant can make up to five choices this way. The number of June deadline applications does not include choices made through the following routes: Clearing, Extra, Adjustment and RPAs. Applications made to October deadline courses received after the October deadline are not included in these statistics.

June deadline applicants

The number of applicants that made at least one application to the provider by the June 30 deadline.

June deadline applicants per 10,000 population

The number of UK domiciled 18 year old June deadline applicants to the provider divided by the number of UK 18 year olds in the population, multiplied by 10,000. This gives the number of 18 year olds, for every 10,000 in the population, who applied by the June 30 deadline. It is equivalent to the application rate. By referencing the underlying population this statistic shows how the number of June deadline applicants is changing in relation to the available pool of potential 18 year old applicants and so gives the chance that somebody from the group will apply to a provider by the June 30 deadline.

This statistic is only reported for 18 year olds.

Offers

An offer is defined as a provider's decision in response to an application to offer a place to an applicant, often subject to the applicant satisfying academic and/or other criteria, via a June deadline application (i.e. does not cover choices made through the following routes: Clearing, Extra, Adjustment and RPAs).

Offer rate

The number of offers made divided by the number of June deadline applications. This gives the proportion of all June deadline applications to the provider that received an offer.

Percentage point difference between offer rate and average offer rate

The offer rate minus the average offer rate.

The percentage point difference can be compared to the expected range of statistical variation resulting from the calculation of the average offer rate using the Average Offer Rate Lookup Table. Where the value of the percentage point difference lies outside of this range, the percentage point difference may be considered to represent a real difference between the offer rate and the average offer rate.

Other definitions

Age

This analysis uses country-specific age definitions that align with the cut off points for school and college cohorts within the different administrations of the UK. For England and Wales, ages are defined on the 31 August, for Northern Ireland on the 1 July and for Scotland on the 28 February the following year. Defining ages in this way matches the assignment of children to school cohorts. For applicants outside of the UK a cohort cut off of 31 August has been used.

Provider

A higher education provider - a university or college.

UK domiciled

Declared area of permanent residence within England, Northern Ireland, Scotland and Wales. Applicants from the Channel Islands and Isle of Man are not included.