

C58 University of Chichester

Cycle years: 2010 - 2015

Cycle Reference Point: End of Cycle

Applicant coverage: UK domiciled

Reporting groups: Sex, POLAR3, ethnic group

Applicant statistics: June deadline applicants, placed June deadline applicants, all placed applicants, June deadline applicants per 10,000 population, placed June deadline applicants per 10,000 population, all placed applicants per 10,000 population

Application statistics: June deadline applications, offers, offer rate, average offer rate, percentage point difference between offer rate and average offer rate, contribution of group to the average offer rate

Non-disclosure controls: To avoid the disclosure of information about any individual the following measures are taken

- Applicants, placed applicants, applications and offers are rounded to the nearest 5.
- Applicants/placed applicants per 10,000 population figures are reported as 0 if the applicant/placed applicant figures are rounded to 0.
- All statistics related to the offer rate are not reported when the number of applications for a group is less than 10. The percentage point difference between the offer rate and the average offer rate is not reported when the number of applications for a group is less than 50.
- Offer rates are reported as 0% if there are fewer than 5 offers, and 100% if the number of offers is within 5 of the number of applications. When the offer rate is reported as 0% or 100%, it is reported in italics.

Contents:

18 year old applicants:	P.1
18 year old applications:	P.2
18 year old applicants by sex:	P.3
18 year old applications by sex:	P.4
18 year old applicants by POLAR3 quintile:	P.7
18 year old applications by POLAR3 quintile:	P.8
18 year old applicants by ethnic group:	P.11
18 year old applications by ethnic group:	P.12
Applicants (all ages):	P.15
Applications (all ages):	P.16
Applicants (all ages) by sex:	P.17
Applications (all ages) by sex:	P.18
Applicants (all ages) by POLAR3 quintile:	P.19
Applications (all ages) by POLAR3 quintile:	P.20
Applicants (all ages) by ethnic group:	P.21
Applications (all ages) by ethnic group:	P.22

P.1 18 year old applicants

Statistic	2010	2011	2012	2013	2014	2015
June deadline applicants	4,230	4,770	3,965	4,190	3,905	4,100
Placed June deadline applicants	805	800	890	805	790	805
All placed applicants	815	825	960	865	865	865
June deadline applicants per 10,000 population	53.6	61.9	51.3	55.0	51.8	53.5
Placed June deadline applicants per 10,000	10.2	10.4	11.5	10.6	10.5	10.5
All placed applicants per 10,000 population	10.3	10.7	12.4	11.4	11.5	11.3

P.2 18 year old applications

Statistic	2010	2011	2012	2013	2014	2015
June deadline applications	4,480	5,035	4,160	4,380	4,120	4,320
Offers	3,235	3,400	3,290	3,320	2,950	3,035
Offer rate	72.2%	67.6%	79.1%	75.9%	71.6%	70.3%

P.3 18 year old applicants by sex

Statistic	Sex	2010	2011	2012	2013	2014	2015
June deadline applicants	Men	1,615	1,825	1,400	1,445	1,420	1,340
	Women	2,615	2,945	2,570	2,740	2,485	2,765
Placed June deadline applicants	Men	305	320	340	315	275	285
	Women	495	475	550	490	515	520
All placed applicants	Men	310	335	370	340	310	310
	Women	505	495	590	525	555	555
June deadline applicants per 10,000 population	Men	40.2	46.4	35.3	37.0	36.6	34.1
	Women	67.4	78.2	68.1	74.0	67.9	73.9
Placed June deadline applicants per 10,000 population	Men	7.6	8.2	8.6	8.0	7.1	7.3
	Women	12.8	12.7	14.6	13.3	14.0	13.9
All placed applicants per 10,000 population	Men	7.7	8.5	9.3	8.7	8.0	7.9
	Women	13.0	13.1	15.6	14.1	15.2	14.9

P.4 18 year old applications by sex

Statistic	Sex	2010	2011	2012	2013	2014	2015
June deadline applications	Men	1,725	1,945	1,475	1,525	1,515	1,425
	Women	2,755	3,090	2,685	2,855	2,610	2,895
Offers	Men	1,325	1,420	1,265	1,280	1,155	1,065
	Women	1,910	1,980	2,025	2,045	1,795	1,970
Offer rate	Men	76.7%	73.0%	85.8%	83.9%	76.3%	74.7%
	Women	69.3%	64.2%	75.5%	71.6%	68.9%	68.1%
Average offer rate	Men	76.8%	72.7%	86.1%	83.9%	77.9%	74.9%
	Women	69.3%	64.3%	75.3%	71.5%	67.9%	68.0%
Percentage point difference between offer rate and average offer rate	Men	-0.1	0.3	-0.2	-0.0	-1.6	-0.2
	Women	0.1	-0.2	0.1	0.0	0.9	0.1
Contribution of group to the average offer rate	Men	0.573	0.558	0.537	0.537	0.563	0.529
	Women	0.732	0.721	0.746	0.753	0.746	0.768

P.5 18 year old offer rate by sex

Note: The line for a group is not plotted when that group made fewer than 10 applications in any of the years from 2010-2015.

Men
Women



P.6 Percentage point difference between 18 year old offer rate and average offer rate by sex

Note: The line for a group is not plotted when that group made fewer than 50 applications in any of the years from 2010-2015.

Men
Women



P.7 18 year old applicants by POLAR3 quintile

Statistic	POLAR3 quintile	2010	2011	2012	2013	2014	2015
June deadline applicants	Quintile 1	545	615	505	535	555	585
	Quintile 2	745	810	665	785	755	735
	Quintile 3	870	940	840	840	805	865
	Quintile 4	1,055	1,210	970	1,040	910	950
	Quintile 5	1,005	1,190	980	985	880	955
Placed June deadline applicants	Quintile 1	110	100	110	115	135	110
	Quintile 2	160	150	145	160	150	130
	Quintile 3	150	170	195	150	160	185
	Quintile 4	195	190	210	195	200	190
	Quintile 5	190	185	225	180	145	185
All placed applicants	Quintile 1	115	100	115	125	140	120
	Quintile 2	160	160	155	175	160	145
	Quintile 3	150	180	215	165	180	195
	Quintile 4	200	195	230	210	215	200
	Quintile 5	190	190	245	190	170	205
June deadline applicants per 10,000 population	Quintile 1	36.8	42.8	35.6	38.2	39.7	41.9
	Quintile 2	48.5	53.8	44.3	53.3	51.5	49.4
	Quintile 3	54.8	61.1	54.4	55.1	53.4	56.3
	Quintile 4	66.2	77.1	61.1	66.5	58.9	60.8
	Quintile 5	59.4	72.0	58.5	59.6	54.0	57.0
Placed June deadline applicants per 10,000 population	Quintile 1	7.5	6.8	7.7	8.4	9.6	8.0
	Quintile 2	10.3	10.1	9.6	10.9	10.3	8.9
	Quintile 3	9.4	11.1	12.7	10.0	10.7	12.0
	Quintile 4	12.2	12.3	13.3	12.6	12.8	12.0
	Quintile 5	11.2	11.1	13.5	10.8	8.8	11.1
All placed applicants per 10,000 population	Quintile 1	7.7	7.0	8.0	8.9	10.0	8.6
	Quintile 2	10.3	10.5	10.4	11.7	10.8	9.8
	Quintile 3	9.5	11.8	13.8	10.9	12.0	12.6
	Quintile 4	12.5	12.4	14.4	13.4	14.1	12.8
	Quintile 5	11.2	11.5	14.6	11.6	10.5	12.2

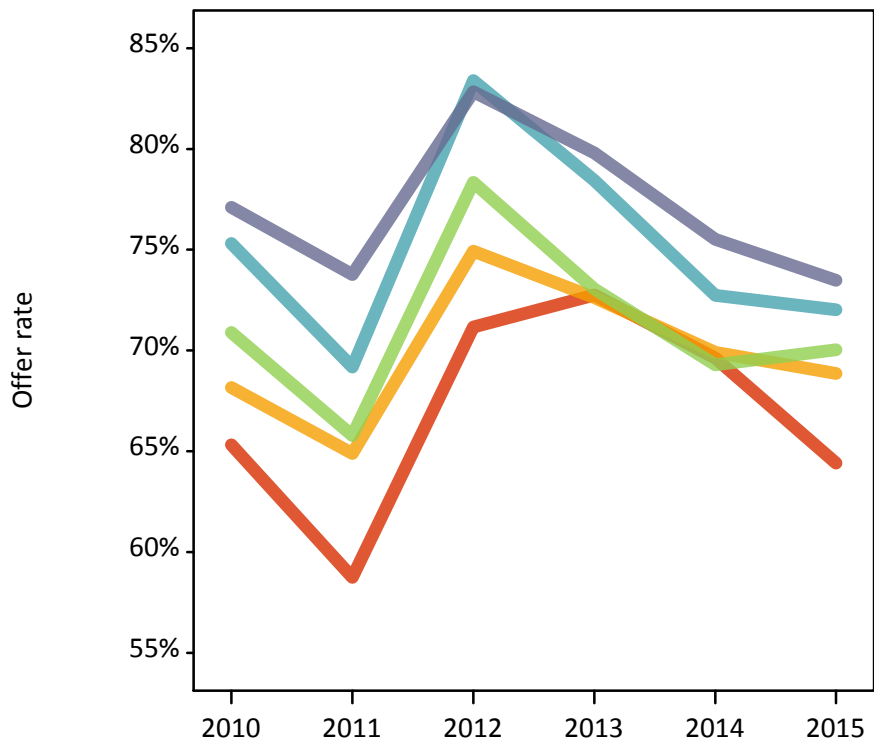
P.8 18 year old applications by POLAR3 quintile

Statistic	POLAR3 quintile	2010	2011	2012	2013	2014	2015
June deadline applications	Quintile 1	590	670	540	570	600	620
	Quintile 2	805	865	700	830	790	775
	Quintile 3	920	985	895	870	855	910
	Quintile 4	1,110	1,270	1,010	1,085	960	1,015
	Quintile 5	1,050	1,240	1,010	1,020	910	990
Offers	Quintile 1	385	395	385	415	415	400
	Quintile 2	550	560	525	600	555	535
	Quintile 3	655	650	700	635	590	640
	Quintile 4	835	880	845	850	700	730
	Quintile 5	810	915	835	815	690	725
Offer rate	Quintile 1	65.3%	58.7%	71.2%	72.8%	69.6%	64.4%
	Quintile 2	68.2%	64.9%	74.9%	72.6%	69.9%	68.9%
	Quintile 3	70.9%	65.8%	78.3%	73.1%	69.3%	70.0%
	Quintile 4	75.3%	69.2%	83.4%	78.4%	72.7%	72.0%
	Quintile 5	77.1%	73.8%	82.8%	79.8%	75.5%	73.5%
Average offer rate	Quintile 1	67.3%	62.4%	75.7%	71.6%	70.6%	66.2%
	Quintile 2	69.8%	65.1%	76.1%	74.1%	69.3%	69.1%
	Quintile 3	71.1%	65.7%	79.0%	74.8%	71.5%	70.5%
	Quintile 4	74.4%	68.7%	81.5%	77.0%	71.3%	71.5%
	Quintile 5	75.4%	72.2%	80.8%	79.2%	74.9%	72.3%
Percentage point difference between offer rate and average offer rate	Quintile 1	-2.0	-3.7	-4.6	1.1	-0.9	-1.8
	Quintile 2	-1.7	-0.2	-1.2	-1.4	0.6	-0.2
	Quintile 3	-0.2	0.1	-0.7	-1.8	-2.2	-0.4
	Quintile 4	0.9	0.5	1.9	1.4	1.4	0.5
	Quintile 5	1.7	1.6	2.0	0.6	0.6	1.1
Contribution of group to the average offer rate	Quintile 1	0.224	0.213	0.211	0.227	0.227	0.229
	Quintile 2	0.255	0.243	0.249	0.269	0.264	0.254
	Quintile 3	0.268	0.261	0.291	0.262	0.274	0.278
	Quintile 4	0.314	0.312	0.308	0.311	0.299	0.303
	Quintile 5	0.317	0.331	0.310	0.313	0.304	0.312

P.9 18 year old offer rate by POLAR3 quintile

Note: The line for a group is not plotted when that group made fewer than 10 applications in any of the years from 2010-2015.

- Quintile 1
- Quintile 2
- Quintile 3
- Quintile 4
- Quintile 5



P.10 Percentage point difference between 18 year old offer rate and average offer rate by POLAR3 quintile

Note: The line for a group is not plotted when that group made fewer than 50 applications in any of the years from 2010-2015.

- Quintile 1
- Quintile 2
- Quintile 3
- Quintile 4
- Quintile 5



P.11 18 year old applicants by ethnic group

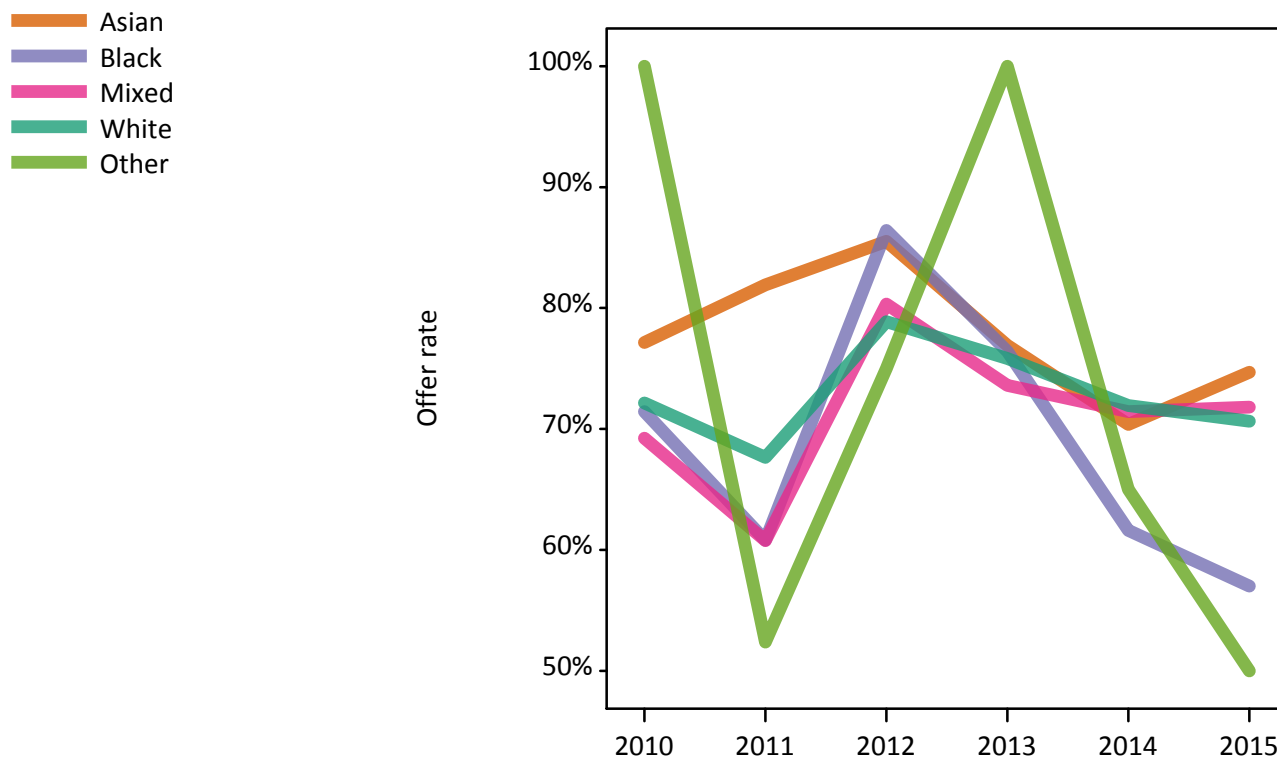
Statistic	Ethnic group	2010	2011	2012	2013	2014	2015
June deadline applicants	Asian	70	100	75	75	75	75
	Black	85	100	80	120	105	100
	Mixed	100	150	120	120	120	140
	White	3,955	4,390	3,660	3,850	3,575	3,755
	Other	10	20	20	15	20	15
Placed June deadline applicants	Asian	10	10	15	5	10	15
	Black	5	10	10	15	15	10
	Mixed	20	25	25	20	20	30
	White	765	755	835	760	740	750
	Other	0	0	5	0	0	0
All placed applicants	Asian	10	10	20	10	15	20
	Black	5	10	15	20	20	15
	Mixed	20	25	25	20	25	30
	White	775	780	895	810	805	800
	Other	0	0	5	0	0	0
June deadline applicants per 10,000 population	Asian	11.0	16.0	11.4	11.7	11.4	10.9
	Black	31.7	36.9	28.4	40.1	35.0	32.1
	Mixed	42.7	61.1	46.1	44.8	42.4	45.7
	White	59.0	67.8	56.7	61.2	57.9	60.2
	Other	13.0	23.5	24.9	15.4	19.3	16.6
Placed June deadline applicants per 10,000 population	Asian	1.5	1.3	2.2	1.1	1.8	1.8
	Black	2.3	2.9	3.9	5.1	4.3	3.5
	Mixed	7.8	9.9	8.8	8.1	7.0	9.1
	White	11.4	11.7	12.9	12.1	12.0	12.0
	Other	0.0	0.0	5.7	0.0	0.0	0.0
All placed applicants per 10,000 population	Asian	1.5	1.4	2.8	1.8	2.2	2.5
	Black	2.3	2.9	5.3	6.7	5.9	5.0
	Mixed	7.8	10.7	9.2	8.1	9.0	9.4
	White	11.6	12.1	13.8	12.8	13.1	12.8
	Other	0.0	0.0	6.8	0.0	0.0	0.0

P.12 18 year old applications by ethnic group

Statistic	Ethnic group	2010	2011	2012	2013	2014	2015
June deadline applications	Asian	70	105	75	80	80	80
	Black	85	100	80	125	110	105
	Mixed	105	160	120	125	125	150
	White	4,200	4,640	3,845	4,030	3,775	3,960
	Other	10	20	25	15	20	15
Offers	Asian	55	85	65	60	55	60
	Black	60	60	70	95	70	60
	Mixed	70	95	100	90	90	105
	White	3,030	3,140	3,035	3,055	2,715	2,795
	Other	10	10	20	10	15	10
Offer rate	Asian	77.1%	81.9%	85.5%	76.9%	70.4%	74.7%
	Black	71.4%	60.8%	86.4%	76.4%	61.6%	57.0%
	Mixed	69.2%	60.8%	80.3%	73.6%	71.4%	71.8%
	White	72.2%	67.7%	78.9%	75.8%	71.9%	70.6%
	Other	100.0%	52.4%	75.0%	100.0%	65.0%	50.0%
Average offer rate	Asian	82.2%	80.6%	84.5%	80.3%	78.1%	75.8%
	Black	80.2%	70.6%	86.5%	76.6%	68.3%	66.5%
	Mixed	73.8%	63.7%	82.8%	75.5%	71.3%	70.0%
	White	71.8%	67.3%	78.7%	75.7%	71.5%	70.3%
	Other	77.7%	63.2%	84.9%	86.0%	71.9%	67.9%
Percentage point difference between offer rate and average offer rate	Asian	-5.1	1.3	1.0	-3.4	-7.7	-1.1
	Black	-8.8	-9.8	-0.1	-0.2	-6.7	-9.5
	Mixed	-4.6	-2.9	-2.5	-1.9	0.2	1.8
	White	0.4	0.3	0.2	0.1	0.4	0.4
	Other	N/A	N/A	N/A	N/A	N/A	N/A
Contribution of group to the average offer rate	Asian	0.143	0.152	0.146	0.152	0.148	0.123
	Black	0.130	0.132	0.140	0.153	0.121	0.119
	Mixed	0.109	0.106	0.111	0.114	0.112	0.126
	White	0.944	0.931	0.934	0.931	0.925	0.925
	Other	0.120	0.072	0.143	0.058	0.144	0.065

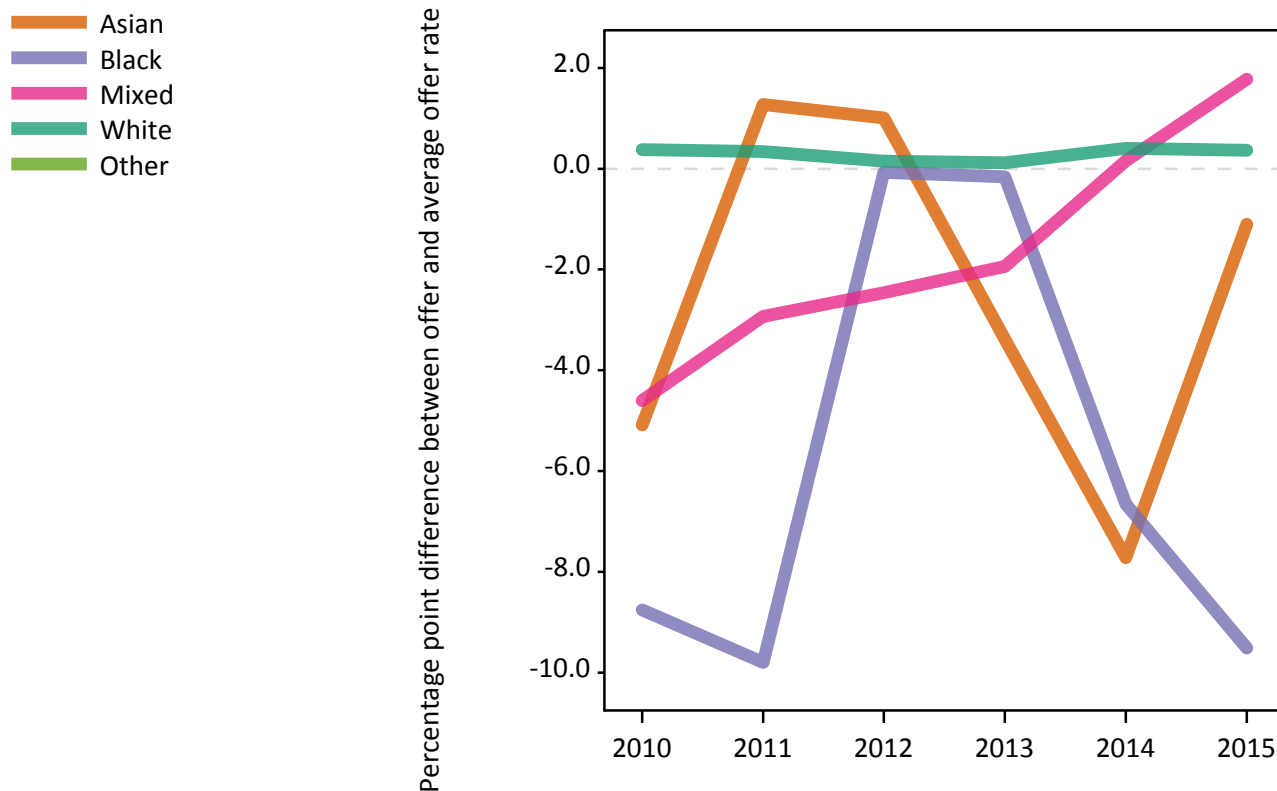
P.13 18 year old offer rate by ethnic group

Note: The line for a group is not plotted when that group made fewer than 10 applications in any of the years from 2010-2015.



P.14 Percentage point difference between 18 year old offer rate and average offer rate by ethnic group

Note: The line for a group is not plotted when that group made fewer than 50 applications in any of the years from 2010-2015.



P.15 Applicants (all ages)

Statistic	2010	2011	2012	2013	2014	2015
June deadline applicants	7,150	7,830	6,195	6,595	6,385	6,520
Placed June deadline applicants	1,470	1,390	1,410	1,340	1,380	1,380
All placed applicants	1,510	1,450	1,535	1,480	1,540	1,515

P.16 Applications (all ages)

Statistic	2010	2011	2012	2013	2014	2015
June deadline applications	7,745	8,405	6,595	6,980	6,860	6,975
Offers	5,060	5,050	4,785	4,945	4,580	4,650
Offer rate	65.4%	60.1%	72.5%	70.8%	66.7%	66.7%

P.17 Applicants (all ages) by sex

Statistic	Sex	2010	2011	2012	2013	2014	2015
June deadline applicants	Men	2,875	3,130	2,340	2,465	2,465	2,355
	Women	4,275	4,700	3,855	4,135	3,925	4,170
Placed June deadline applicants	Men	590	580	575	540	535	530
	Women	880	810	835	795	845	845
All placed applicants	Men	605	610	630	600	600	595
	Women	905	840	905	880	940	915

P.18 Applications (all ages) by sex

Statistic	Sex	2010	2011	2012	2013	2014	2015
June deadline applications	Men	3,130	3,380	2,500	2,620	2,655	2,550
	Women	4,615	5,025	4,095	4,360	4,205	4,425
Offers	Men	2,150	2,195	1,990	2,025	1,900	1,780
	Women	2,910	2,855	2,795	2,920	2,680	2,870
Offer rate	Men	68.8%	65.0%	79.5%	77.3%	71.6%	69.8%
	Women	63.1%	56.8%	68.3%	66.9%	63.7%	64.9%

P.19 Applicants (all ages) by POLAR3 quintile

Statistic	POLAR3 quintile	2010	2011	2012	2013	2014	2015
June deadline applicants	Quintile 1	1,040	1,135	965	980	1,000	1,025
	Quintile 2	1,330	1,390	1,105	1,245	1,250	1,245
	Quintile 3	1,450	1,590	1,280	1,315	1,320	1,380
	Quintile 4	1,745	1,875	1,470	1,585	1,445	1,480
	Quintile 5	1,565	1,820	1,370	1,465	1,355	1,380
Placed June deadline applicants	Quintile 1	225	200	195	230	245	230
	Quintile 2	315	255	265	260	290	255
	Quintile 3	285	295	305	255	290	305
	Quintile 4	350	330	335	315	310	320
	Quintile 5	290	305	310	280	240	265
All placed applicants	Quintile 1	235	205	205	250	265	245
	Quintile 2	325	265	290	285	310	280
	Quintile 3	290	310	325	290	330	330
	Quintile 4	360	345	370	345	345	355
	Quintile 5	300	320	340	305	290	300

P.20 Applications (all ages) by POLAR3 quintile

Statistic	POLAR3 quintile	2010	2011	2012	2013	2014	2015
June deadline applications	Quintile 1	1,140	1,255	1,055	1,050	1,120	1,115
	Quintile 2	1,480	1,515	1,180	1,340	1,350	1,345
	Quintile 3	1,575	1,710	1,385	1,385	1,420	1,475
	Quintile 4	1,885	2,000	1,555	1,680	1,540	1,590
	Quintile 5	1,645	1,910	1,415	1,515	1,420	1,440
Offers	Quintile 1	670	650	650	690	725	690
	Quintile 2	935	860	820	900	870	860
	Quintile 3	1,020	985	1,020	975	920	990
	Quintile 4	1,290	1,265	1,175	1,235	1,055	1,100
	Quintile 5	1,140	1,280	1,120	1,140	1,005	1,000
Offer rate	Quintile 1	58.9%	51.8%	61.5%	65.7%	64.7%	61.8%
	Quintile 2	63.1%	56.8%	69.6%	67.3%	64.2%	64.1%
	Quintile 3	64.7%	57.6%	73.6%	70.3%	64.9%	67.1%
	Quintile 4	68.4%	63.3%	75.7%	73.3%	68.6%	69.3%
	Quintile 5	69.3%	66.9%	79.0%	75.2%	70.9%	69.5%

P.21 Applicants (all ages) by ethnic group

Statistic	Ethnic group	2010	2011	2012	2013	2014	2015
June deadline applicants	Asian	140	195	155	150	155	135
	Black	205	260	200	235	250	250
	Mixed	190	245	195	225	210	235
	White	6,565	7,080	5,600	5,935	5,725	5,845
	Other	30	30	35	30	40	35
Placed June deadline applicants	Asian	15	15	25	15	20	25
	Black	25	25	25	30	35	30
	Mixed	35	40	45	45	35	45
	White	1,385	1,300	1,305	1,245	1,280	1,270
	Other	5	5	10	5	5	5
All placed applicants	Asian	15	15	35	25	30	30
	Black	25	30	35	40	50	50
	Mixed	35	45	45	45	45	50
	White	1,420	1,355	1,410	1,360	1,410	1,370
	Other	5	5	10	10	5	10

P.22 Applications (all ages) by ethnic group

Statistic	Ethnic group	2010	2011	2012	2013	2014	2015
June deadline applications	Asian	145	205	160	155	170	140
	Black	210	270	205	245	260	255
	Mixed	200	260	205	235	220	245
	White	7,135	7,605	5,975	6,295	6,160	6,270
	Other	30	35	40	30	45	40
Offers	Asian	95	135	125	115	110	100
	Black	120	110	140	165	140	130
	Mixed	120	155	155	165	145	160
	White	4,690	4,620	4,335	4,455	4,145	4,225
	Other	20	15	25	25	30	20
Offer rate	Asian	65.3%	65.4%	78.1%	74.4%	66.1%	71.8%
	Black	56.9%	40.2%	69.0%	67.9%	54.3%	50.6%
	Mixed	61.0%	58.4%	74.8%	70.6%	65.6%	66.0%
	White	65.7%	60.8%	72.5%	70.8%	67.3%	67.4%
	Other	64.5%	47.2%	68.4%	83.9%	65.1%	56.4%

Technical Notes and Definitions

UCAS undergraduate scheme

Adjustment

Adjustment allows applicants who have met and exceeded the terms of their conditional firm offer to seek and find a place at another provider whilst keeping their place at their original firm choice provider.

Clearing

Clearing is a route for applicants that are not placed and holding no offers to find a place on courses with vacancies.

Cycle year

The UCAS application cycle which runs from September to October the following year. For example the 2015 cycle runs from September 2014 through to October 2015.

End of cycle

The point in the cycle to which the numbers in this report refer, and the point at which the cycle is closed such that no more applications or offers can be made, and no more applicants can be placed. Numbers reported at the end of cycle exclude information on a small number of applicants who cancelled during the cycle.

Extra

Applicants who are unsuccessful in obtaining an offer or decline all offers may be eligible to apply through Extra, where they can apply to one further course at a time. Extra operates from 25 February until early July. It provides applicants who are eligible the possibility of obtaining an offer before exam results are published and Clearing starts.

June 30 deadline

The deadline for main scheme applications. Applicants who apply after this date will go directly into Clearing.

Record of Prior Acceptance (RPA)

RPA is an acceptance route used when a provider informs UCAS of applicants it has accepted outside of the normal application process (e.g. individuals who have applied directly to the provider).

Reporting groups

Ethnic group

High level grouping of ethnic origin as declared by the applicant: 'White', 'Black', 'Asian', 'Mixed', 'Other', 'Unknown'. Applicants who declare themselves as 'Unknown' ethnic origin are not reported in these tables, but are included in the associated csv data file.

POLAR3 quintile

Developed by HEFCE, POLAR3 classifies small areas across the UK into five groups according to their level of young participation in Higher Education. Each of these groups represents around 20 per cent of young people and is ranked from Quintile 1 (areas with the lowest young participation rates, considered as the most disadvantaged) to Quintile 5 (highest young participation rates, considered most advantaged). POLAR3 is based on the participation rates of young people between 2005 and 2009 who entered Higher Education between 2005-06 and 2010-11, therefore is most suitable for applicants aged 19 and under. These groups are assigned using the postcode declared by the applicant at the time of their application. If a UK postcode is invalid, considered unsafe for measurement or there is no link to Census geography possible then the applicant is not assigned to a quintile. Applicants with no POLAR3 quintile are not reported.

Sex

Sex as declared by the applicant.

SIMD quintile

Scottish index of multiple deprivation (SIMD) for 2012 identifies small area concentrations of multiple deprivation across all of Scotland, providing a relative measure of deprivation amongst 6505 small areas (data zones) based on 7 socio-economic domains. These small areas are classified into five groups ranked from Quintile 1 (considered the most deprived) to Quintile 5 (considered least deprived), with equal populations in each quintile. Quintiles are assigned using the postcode declared by the applicant, applicants declaring invalid postcodes are classified as 'Not assigned' and are not reported.

SIMD is only defined for applicants domiciled in Scotland, therefore any applicants domiciled outside of Scotland cannot be assigned to an SIMD quintile and so are not reported for this measure.

SIMD is only reported for providers in Scotland. Application and entry rates by SIMD are reported in the 2015 End of Cycle Report and the 2016 cycle January deadline application rate report.

Statistics reported in the tables

All placed applicants

The number of applicants placed for entry into higher education at the provider through one of their choices, including any choices made through Extra, or via Adjustment, Clearing or RPA.

All placed applicants per 10,000 population

The number of total UK domiciled 18 year old placed applicants for entry into higher education at the provider divided by the number of UK 18 year olds in the population, multiplied by 10,000. This gives the number of 18 year olds, for every 10,000 in the population, that were placed at the provider through one of their choices, including any choices made through Extra, or via Adjustment, Clearing or RPA. It is an alternative way of expressing the entry rate to a provider. By referencing the underlying population this statistic shows how the number of placed applicants is changing in relation to the available pool of potential applicants and so gives the chance that somebody from the group will be placed at a provider.

This statistic is only reported for 18 year olds.

Average offer rate

The offer rate that you might expect if the predicted grades and subject choice of applicants were the only factors that influenced whether an applicant was made an offer by the provider. The average offer rate is calculated by dividing applicants according to their specific combination of grades (for A levels the best three predicted grades are used, for BTECs, International Baccalaureate and Scottish Highers and Advanced Highers, predicted grades along with any grades already achieved upon applying are used) and subject choice. For each combination the number of main scheme offers is divided by the number of main scheme applications, to give an overall offer rate. This is then multiplied by the number of applications made by the group for which the average offer rate is being calculated (for example POLAR3 quintile 1), to give an average number of offers for that group. These average number of offers are then added together across all combinations of predicted grade and subject and divided by the number of main scheme applications from the group to give the average offer rate.

The average offer rate does not attempt to control for any other factors that may play a part in the decision to make an offer, such as the subject of the qualifications studied, their relevance to a course, or the grade in each subject; higher numbers of A levels being studied; the exact profile of grades predicted; personal statements; teacher references; interviews; or any other criteria (such as work experience or portfolios) that may be part of the admissions decision.

This statistic is only reported for 18 year olds.

Contribution of group to the average offer rate

The way in which the average offer rate is defined means that the pattern of application and offers of a group (for example POLAR3 quintile 1) will always contribute, in part, to the average offer rate for that group. When this contribution is large, the average offer rate will mainly reflect the patterns for the group, meaning that the value of the average offer rate will be similar to the offer rate, the percentage point difference statistic will be small, and any real difference between the offer rate and what might be expected given the predicted grades and subject choices of the applicants will be difficult to detect.

Values of the contribution of group to the average offer rate range between 0 and 1. The closer the value is to 1 the greater the contribution a group makes to its own average offer rate.

This statistic is only reported for 18 year olds.

Placed June deadline applicants

An applicant who has been placed for entry into higher education at the provider through a June deadline application.

Placed June deadline applicants per 10,000 population

The number of UK domiciled 18 year old placed June deadline applicants at the provider divided by the number of UK 18 year olds in the population, multiplied by 10,000. This gives the number of 18 year olds, for every 10,000 in the population, that were placed at the provider through one of their June deadline applications. It is an alternative way of expressing the entry rate to a provider, but for placed June deadline applicants only. By referencing the underlying population this statistic shows how the number of placed June deadline applicants is changing in relation to the available pool of potential 18 year old applicants and so gives the chance that somebody from the group will be placed at a provider through a June deadline application.

This statistic is only reported for 18 year olds.

June deadline applications

An application (or choice) to a course in higher education to the provider that is made by the June 30 deadline. Each applicant can make up to five choices this way. The number of June deadline applications does not include choices made through the following routes: Clearing, Extra, Adjustment and RPAs. Applications made to October deadline courses received after the October deadline are not included in these statistics.

June deadline applicants

The number of applicants that made at least one application to the provider by the June 30 deadline.

June deadline applicants per 10,000 population

The number of UK domiciled 18 year old June deadline applicants to the provider divided by the number of UK 18 year olds in the population, multiplied by 10,000. This gives the number of 18 year olds, for every 10,000 in the population, who applied by the June 30 deadline. It is equivalent to the application rate. By referencing the underlying population this statistic shows how the number of June deadline applicants is changing in relation to the available pool of potential 18 year old applicants and so gives the chance that somebody from the group will apply to a provider by the June 30 deadline.

This statistic is only reported for 18 year olds.

Offers

An offer is defined as a provider's decision in response to an application to offer a place to an applicant, often subject to the applicant satisfying academic and/or other criteria, via a June deadline application (i.e. does not cover choices made through the following routes: Clearing, Extra, Adjustment and RPAs).

Offer rate

The number of offers made divided by the number of June deadline applications. This gives the proportion of all June deadline applications to the provider that received an offer.

Percentage point difference between offer rate and average offer rate

The offer rate minus the average offer rate.

The percentage point difference can be compared to the expected range of statistical variation resulting from the calculation of the average offer rate using the Average Offer Rate Lookup Table. Where the value of the percentage point difference lies outside of this range, the percentage point difference may be considered to represent a real difference between the offer rate and the average offer rate.

Other definitions

Age

This analysis uses country-specific age definitions that align with the cut off points for school and college cohorts within the different administrations of the UK. For England and Wales, ages are defined on the 31 August, for Northern Ireland on the 1 July and for Scotland on the 28 February the following year. Defining ages in this way matches the assignment of children to school cohorts. For applicants outside of the UK a cohort cut off of 31 August has been used.

Provider

A higher education provider - a university or college.

UK domiciled

Declared area of permanent residence within England, Northern Ireland, Scotland and Wales. Applicants from the Channel Islands and Isle of Man are not included.