

D65 University of Dundee

Cycle years: 2010 - 2015

Cycle Reference Point: End of Cycle

Applicant coverage: UK domiciled

Reporting groups: Sex, POLAR3, SIMD, ethnic group

Applicant statistics: June deadline applicants, placed June deadline applicants, all placed applicants, June deadline applicants per 10,000 population, placed June deadline applicants per 10,000 population, all placed applicants per 10,000 population

Application statistics: June deadline applications, offers, offer rate, average offer rate, percentage point difference between offer rate and average offer rate, contribution of group to the average offer rate

Non-disclosure controls: To avoid the disclosure of information about any individual the following measures are taken

- Applicants, placed applicants, applications and offers are rounded to the nearest 5.
- Applicants/placed applicants per 10,000 population figures are reported as 0 if the applicant/placed applicant figures are rounded to 0.
- All statistics related to the offer rate are not reported when the number of applications for a group is less than 10. The percentage point difference between the offer rate and the average offer rate is not reported when the number of applications for a group is less than 50.
- Offer rates are reported as 0% if there are fewer than 5 offers, and 100% if the number of offers is within 5 of the number of applications. When the offer rate is reported as 0% or 100%, it is reported in italics.

Contents:

18 year old applicants:	P.1
18 year old applications:	P.2
18 year old applicants by sex:	P.3
18 year old applications by sex:	P.4
18 year old applicants by POLAR3 quintile:	P.7
18 year old applications by POLAR3 quintile:	P.8
18 year old, Scotland domiciled applicants by SIMD quintile:	P.11
18 year old, Scotland domiciled applications by SIMD quintile:	P.12
18 year old applicants by ethnic group:	P.15
18 year old applications by ethnic group:	P.16
Applicants (all ages):	P.19
Applications (all ages):	P.20
Applicants (all ages) by sex:	P.21
Applications (all ages) by sex:	P.22
Applicants (all ages) by POLAR3 quintile:	P.23
Applications (all ages) by POLAR3 quintile:	P.24
Scotland domiciled applicants (all ages) by SIMD quintile:	P.25
Scotland domiciled applications (all ages) by SIMD quintile:	P.26
Applicants (all ages) by ethnic group:	P.27
Applications (all ages) by ethnic group:	P.28

P.1 18 year old applicants

Statistic	2010	2011	2012	2013	2014	2015
June deadline applicants	7,025	7,780	7,530	6,880	6,975	7,330
Placed June deadline applicants	1,110	1,050	830	865	965	1,055
All placed applicants	1,145	1,085	900	960	1,075	1,175
June deadline applicants per 10,000 population	89.0	101.0	97.4	90.4	92.6	95.6
Placed June deadline applicants per 10,000	14.1	13.6	10.8	11.4	12.8	13.8
All placed applicants per 10,000 population	14.5	14.1	11.6	12.6	14.3	15.3

P.2 18 year old applications

Statistic	2010	2011	2012	2013	2014	2015
June deadline applications	7,995	8,740	8,380	7,505	7,730	8,165
Offers	5,480	5,375	3,760	4,050	4,155	4,540
Offer rate	68.6%	61.5%	44.8%	53.9%	53.8%	55.6%

P.3 18 year old applicants by sex

Statistic	Sex	2010	2011	2012	2013	2014	2015
June deadline applicants	Men	2,715	3,140	2,875	2,460	2,480	2,670
	Women	4,310	4,640	4,660	4,420	4,495	4,655
Placed June deadline applicants	Men	425	405	270	275	335	390
	Women	685	645	560	585	630	665
All placed applicants	Men	430	415	310	315	385	440
	Women	715	675	590	645	685	735
June deadline applicants per 10,000 population	Men	67.6	79.8	72.4	63.0	64.1	68.1
	Women	111.1	123.2	123.6	119.3	122.8	124.6
Placed June deadline applicants per 10,000 population	Men	10.6	10.3	6.9	7.1	8.6	9.9
	Women	17.7	17.1	14.9	15.8	17.3	17.8
All placed applicants per 10,000 population	Men	10.8	10.5	7.8	8.1	10.0	11.2
	Women	18.4	17.9	15.7	17.5	18.8	19.6

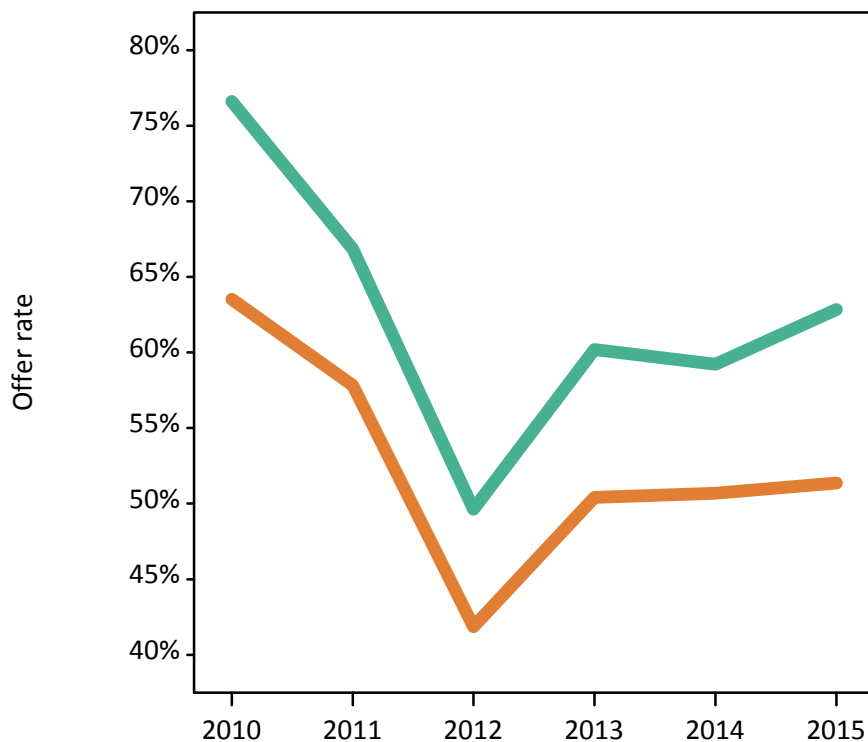
P.4 18 year old applications by sex

Statistic	Sex	2010	2011	2012	2013	2014	2015
June deadline applications	Men	3,080	3,525	3,225	2,715	2,795	3,005
	Women	4,915	5,215	5,155	4,790	4,935	5,160
Offers	Men	2,360	2,355	1,600	1,635	1,655	1,890
	Women	3,120	3,015	2,160	2,415	2,500	2,650
Offer rate	Men	76.6%	66.8%	49.6%	60.2%	59.2%	62.8%
	Women	63.5%	57.8%	41.9%	50.4%	50.7%	51.4%
Average offer rate	Men	77.2%	67.9%	51.1%	62.5%	62.4%	64.3%
	Women	63.1%	57.1%	40.9%	49.1%	48.9%	50.5%
Percentage point difference between offer rate and average offer rate	Men	-0.6	-1.1	-1.5	-2.3	-3.2	-1.4
	Women	0.4	0.7	0.9	1.3	1.8	0.8
Contribution of group to the average offer rate	Men	0.546	0.565	0.555	0.530	0.541	0.555
	Women	0.715	0.706	0.722	0.734	0.740	0.741

P.5 18 year old offer rate by sex

Note: The line for a group is not plotted when that group made fewer than 10 applications in any of the years from 2010-2015.

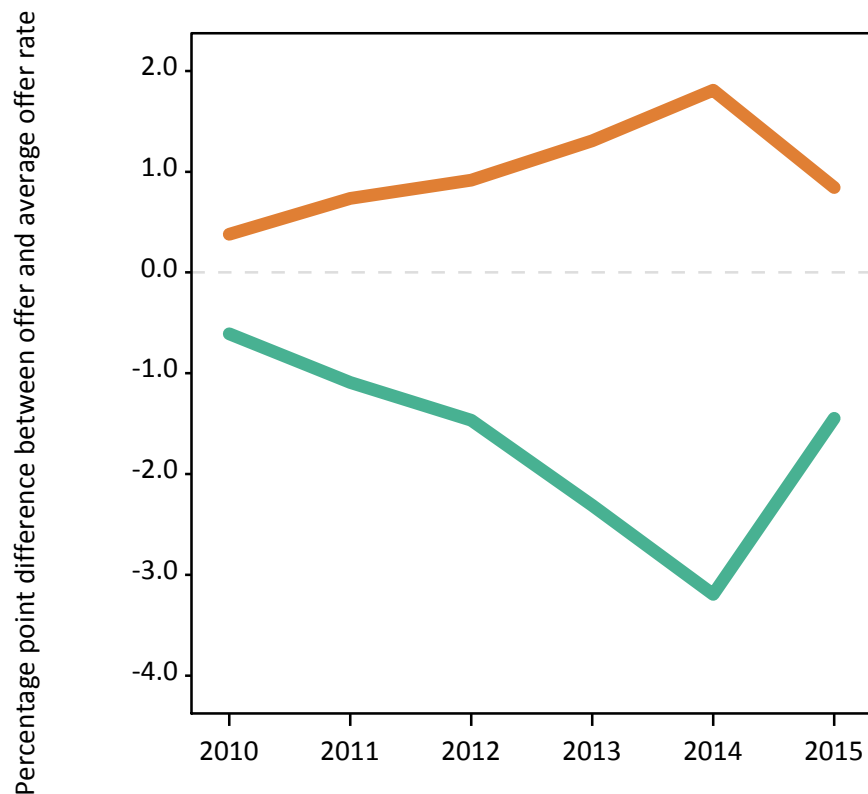
Men
Women



P.6 Percentage point difference between 18 year old offer rate and average offer rate by sex

Note: The line for a group is not plotted when that group made fewer than 50 applications in any of the years from 2010-2015.

Men
Women



P.7 18 year old applicants by POLAR3 quintile

Statistic	POLAR3 quintile	2010	2011	2012	2013	2014	2015
June deadline applicants	Quintile 1	350	375	360	305	325	450
	Quintile 2	690	810	720	710	690	840
	Quintile 3	1,010	1,060	1,115	990	1,005	1,060
	Quintile 4	1,775	1,970	1,870	1,670	1,750	1,820
	Quintile 5	3,180	3,545	3,455	3,185	3,185	3,145
Placed June deadline applicants	Quintile 1	45	55	35	45	55	65
	Quintile 2	105	100	70	100	105	170
	Quintile 3	140	110	110	125	125	140
	Quintile 4	300	270	205	220	245	270
	Quintile 5	520	510	415	370	435	410
All placed applicants	Quintile 1	45	55	40	55	65	70
	Quintile 2	110	110	75	110	120	180
	Quintile 3	145	110	120	140	130	165
	Quintile 4	310	275	220	250	280	305
	Quintile 5	530	535	450	410	480	455
June deadline applicants per 10,000 population	Quintile 1	23.7	26.0	25.1	21.8	23.4	32.3
	Quintile 2	44.7	53.8	48.1	48.1	47.2	56.6
	Quintile 3	63.6	68.8	72.1	65.0	66.9	69.0
	Quintile 4	111.4	125.7	117.8	106.8	113.6	116.2
	Quintile 5	187.7	214.2	205.6	192.6	195.3	187.9
Placed June deadline applicants per 10,000 population	Quintile 1	3.0	3.8	2.3	3.2	4.0	4.6
	Quintile 2	7.0	6.8	4.5	6.7	7.3	11.4
	Quintile 3	8.7	7.1	7.2	8.3	8.2	9.1
	Quintile 4	18.7	17.2	12.8	14.2	16.0	17.3
	Quintile 5	30.6	30.9	24.7	22.4	26.5	24.6
All placed applicants per 10,000 population	Quintile 1	3.2	4.0	2.7	3.8	4.7	4.9
	Quintile 2	7.2	7.3	4.9	7.5	8.1	12.1
	Quintile 3	9.1	7.2	7.6	9.0	8.6	10.7
	Quintile 4	19.5	17.4	13.8	15.9	18.2	19.4
	Quintile 5	31.3	32.3	26.7	24.7	29.4	27.2

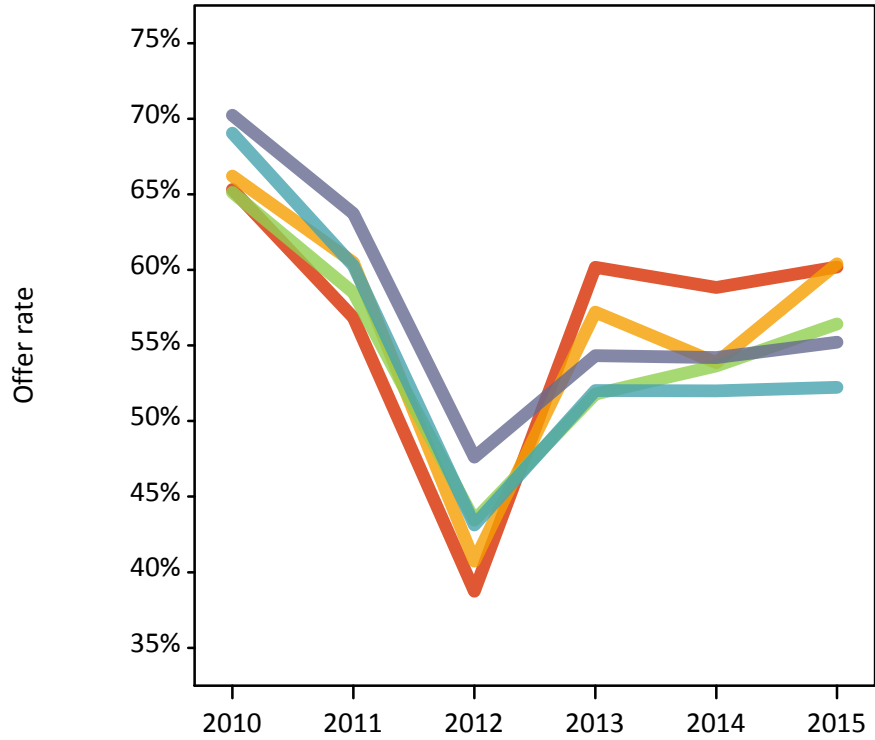
P.8 18 year old applications by POLAR3 quintile

Statistic	POLAR3 quintile	2010	2011	2012	2013	2014	2015
June deadline applications	Quintile 1	395	430	395	335	380	510
	Quintile 2	800	925	810	790	780	945
	Quintile 3	1,130	1,175	1,210	1,070	1,085	1,180
	Quintile 4	2,025	2,235	2,105	1,855	1,930	2,020
	Quintile 5	3,625	3,955	3,840	3,435	3,545	3,490
Offers	Quintile 1	260	245	155	200	225	305
	Quintile 2	530	560	330	450	420	570
	Quintile 3	735	690	525	555	580	665
	Quintile 4	1,395	1,345	910	965	1,005	1,055
	Quintile 5	2,545	2,520	1,830	1,865	1,920	1,930
Offer rate	Quintile 1	65.3%	56.8%	38.7%	60.2%	58.8%	60.2%
	Quintile 2	66.2%	60.5%	40.7%	57.2%	53.9%	60.4%
	Quintile 3	65.1%	58.5%	43.4%	51.8%	53.6%	56.4%
	Quintile 4	69.1%	60.3%	43.1%	52.0%	52.0%	52.2%
	Quintile 5	70.2%	63.7%	47.6%	54.3%	54.2%	55.2%
Average offer rate	Quintile 1	67.3%	59.7%	42.2%	57.4%	51.4%	56.8%
	Quintile 2	68.7%	61.3%	44.2%	53.4%	50.2%	54.6%
	Quintile 3	67.6%	61.3%	44.8%	52.3%	53.2%	55.7%
	Quintile 4	68.6%	60.4%	44.5%	53.1%	53.3%	54.8%
	Quintile 5	68.9%	62.3%	45.4%	54.8%	55.2%	56.0%
Percentage point difference between offer rate and average offer rate	Quintile 1	-2.0	-2.8	-3.5	2.8	7.4	3.4
	Quintile 2	-2.5	-0.8	-3.4	3.9	3.7	5.8
	Quintile 3	-2.4	-2.8	-1.3	-0.6	0.4	0.7
	Quintile 4	0.4	-0.1	-1.3	-1.0	-1.3	-2.6
	Quintile 5	1.3	1.4	2.2	-0.4	-1.0	-0.8
Contribution of group to the average offer rate	Quintile 1	0.204	0.165	0.169	0.167	0.148	0.190
	Quintile 2	0.206	0.202	0.183	0.189	0.185	0.189
	Quintile 3	0.217	0.209	0.207	0.221	0.212	0.217
	Quintile 4	0.322	0.322	0.312	0.309	0.309	0.301
	Quintile 5	0.522	0.515	0.514	0.518	0.515	0.483

P.9 18 year old offer rate by POLAR3 quintile

Note: The line for a group is not plotted when that group made fewer than 10 applications in any of the years from 2010-2015.

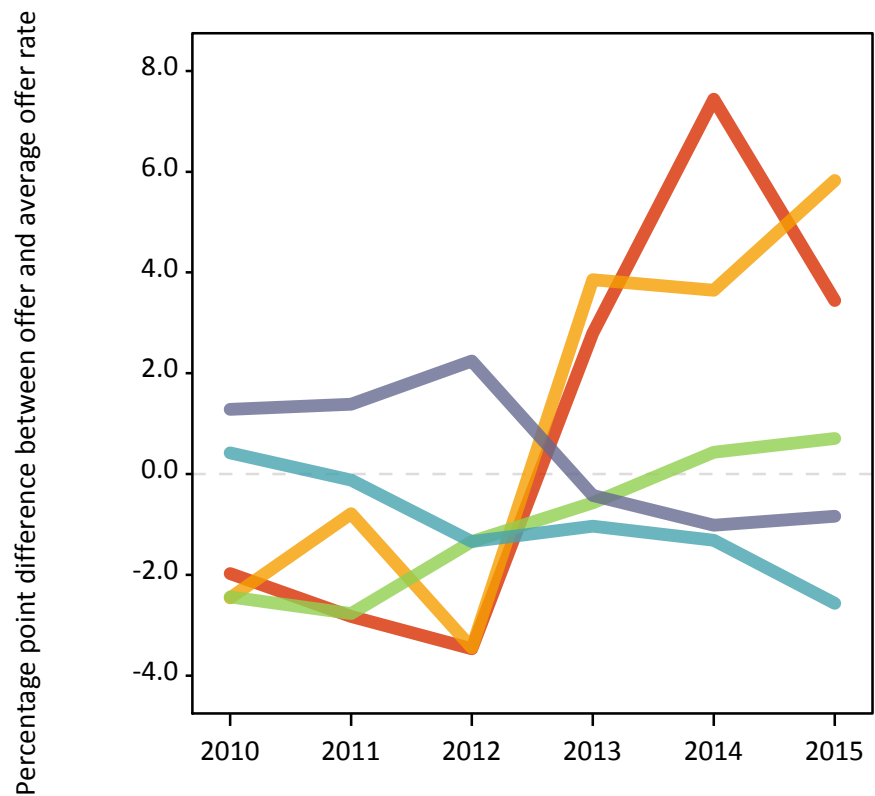
- Quintile 1
- Quintile 2
- Quintile 3
- Quintile 4
- Quintile 5



P.10 Percentage point difference between 18 year old offer rate and average offer rate by POLAR3 quintile

Note: The line for a group is not plotted when that group made fewer than 50 applications in any of the years from 2010-2015.

- Quintile 1
- Quintile 2
- Quintile 3
- Quintile 4
- Quintile 5



P.11 18 year old, Scotland domiciled applicants by SIMD quintile

Statistic	SIMD quintile	2010	2011	2012	2013	2014	2015
June deadline applicants	Quintile 1	320	365	350	350	435	485
	Quintile 2	560	565	595	585	650	735
	Quintile 3	885	910	875	865	990	1,030
	Quintile 4	1,295	1,410	1,385	1,310	1,360	1,435
	Quintile 5	1,755	1,995	1,930	1,870	1,860	1,905
Placed June deadline applicants	Quintile 1	50	50	30	85	100	110
	Quintile 2	85	75	55	115	145	160
	Quintile 3	160	130	105	95	120	135
	Quintile 4	230	215	175	165	195	205
	Quintile 5	320	310	250	270	240	265
All placed applicants	Quintile 1	50	50	35	100	100	110
	Quintile 2	90	75	60	125	150	165
	Quintile 3	160	135	110	110	125	145
	Quintile 4	240	220	185	185	210	220
	Quintile 5	335	325	265	290	250	275
June deadline applicants per 10,000 population	Quintile 1	234.0	274.2	266.4	268.5	331.1	381.8
	Quintile 2	449.0	471.2	503.9	497.7	559.2	647.5
	Quintile 3	713.4	741.3	723.3	725.4	838.2	888.2
	Quintile 4	1,034.7	1,128.9	1,114.4	1,059.8	1,099.8	1,168.9
	Quintile 5	1,355.2	1,566.5	1,532.2	1,502.1	1,502.4	1,561.6
Placed June deadline applicants per 10,000 population	Quintile 1	38.3	38.2	24.5	64.1	74.8	84.7
	Quintile 2	70.0	62.4	47.6	98.2	124.9	142.7
	Quintile 3	128.0	107.5	86.9	81.4	100.8	117.3
	Quintile 4	185.5	172.3	142.4	132.5	158.4	168.0
	Quintile 5	248.9	242.5	200.1	215.0	192.3	216.2
All placed applicants per 10,000 population	Quintile 1	38.3	39.0	28.3	75.5	77.8	87.8
	Quintile 2	72.4	64.1	49.3	105.0	127.5	145.4
	Quintile 3	130.4	111.6	91.0	93.2	107.5	124.2
	Quintile 4	191.1	177.1	149.7	147.8	168.9	178.6
	Quintile 5	259.0	253.5	210.4	234.3	203.7	223.6

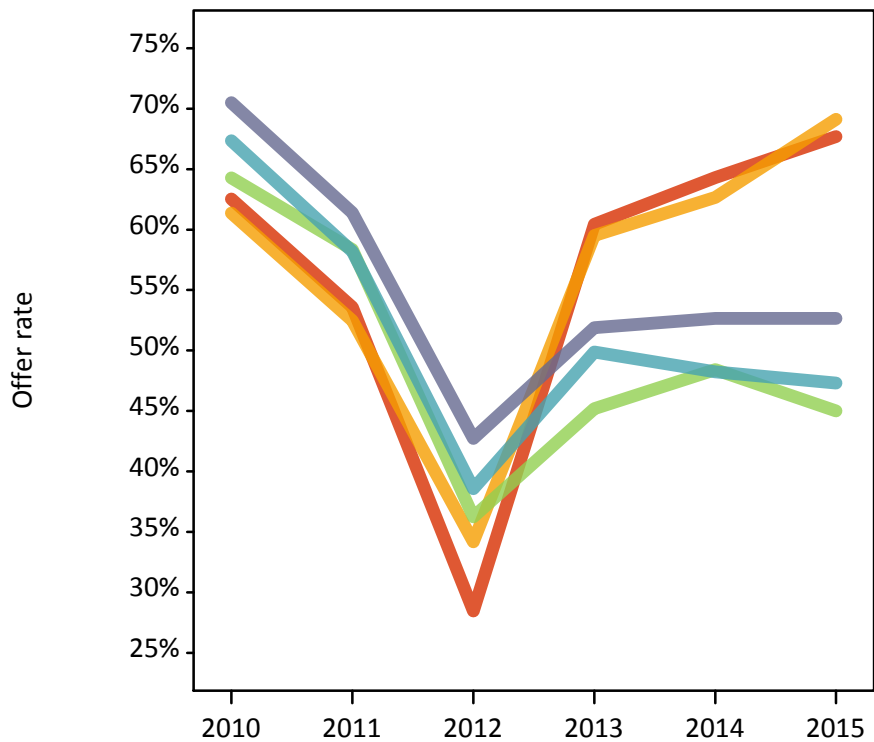
P.12 18 year old, Scotland domiciled applications by SIMD quintile

Statistic	SIMD quintile	2010	2011	2012	2013	2014	2015
June deadline applications	Quintile 1	395	450	420	400	510	585
	Quintile 2	665	670	675	665	725	825
	Quintile 3	1,060	1,070	980	960	1,105	1,160
	Quintile 4	1,545	1,680	1,595	1,460	1,530	1,670
	Quintile 5	2,045	2,245	2,205	2,060	2,120	2,140
Offers	Quintile 1	245	240	120	245	330	395
	Quintile 2	410	350	230	395	455	570
	Quintile 3	680	625	355	435	535	520
	Quintile 4	1,040	975	615	730	735	790
	Quintile 5	1,445	1,380	940	1,070	1,115	1,125
Offer rate	Quintile 1	62.5%	53.6%	28.5%	60.4%	64.3%	67.7%
	Quintile 2	61.4%	52.5%	34.2%	59.5%	62.7%	69.1%
	Quintile 3	64.3%	58.4%	36.3%	45.2%	48.4%	45.0%
	Quintile 4	67.3%	58.2%	38.6%	49.9%	48.2%	47.3%
	Quintile 5	70.5%	61.4%	42.7%	51.9%	52.6%	52.7%
Average offer rate	Quintile 1	67.4%	56.0%	35.8%	49.0%	48.6%	51.4%
	Quintile 2	64.6%	54.8%	36.1%	50.9%	49.8%	51.2%
	Quintile 3	65.8%	58.9%	36.4%	50.3%	52.2%	52.0%
	Quintile 4	66.7%	58.4%	38.9%	51.9%	53.3%	53.9%
	Quintile 5	68.2%	59.8%	40.4%	53.1%	55.3%	55.1%
Percentage point difference between offer rate and average offer rate	Quintile 1	-4.8	-2.5	-7.3	11.4	15.8	16.3
	Quintile 2	-3.2	-2.3	-1.9	8.7	12.9	17.9
	Quintile 3	-1.5	-0.6	-0.2	-5.1	-3.8	-7.0
	Quintile 4	0.6	-0.2	-0.4	-2.0	-5.0	-6.6
	Quintile 5	2.3	1.6	2.3	-1.2	-2.6	-2.4
Contribution of group to the average offer rate	Quintile 1	0.114	0.113	0.119	0.108	0.133	0.135
	Quintile 2	0.149	0.146	0.152	0.167	0.152	0.157
	Quintile 3	0.218	0.203	0.195	0.213	0.210	0.214
	Quintile 4	0.298	0.300	0.296	0.289	0.282	0.286
	Quintile 5	0.400	0.404	0.402	0.412	0.393	0.374

P.13 18 year old, Scotland domiciled offer rate by SIMD quintile

Note: The line for a group is not plotted when that group made fewer than 10 applications in any of the years from 2010-2015.

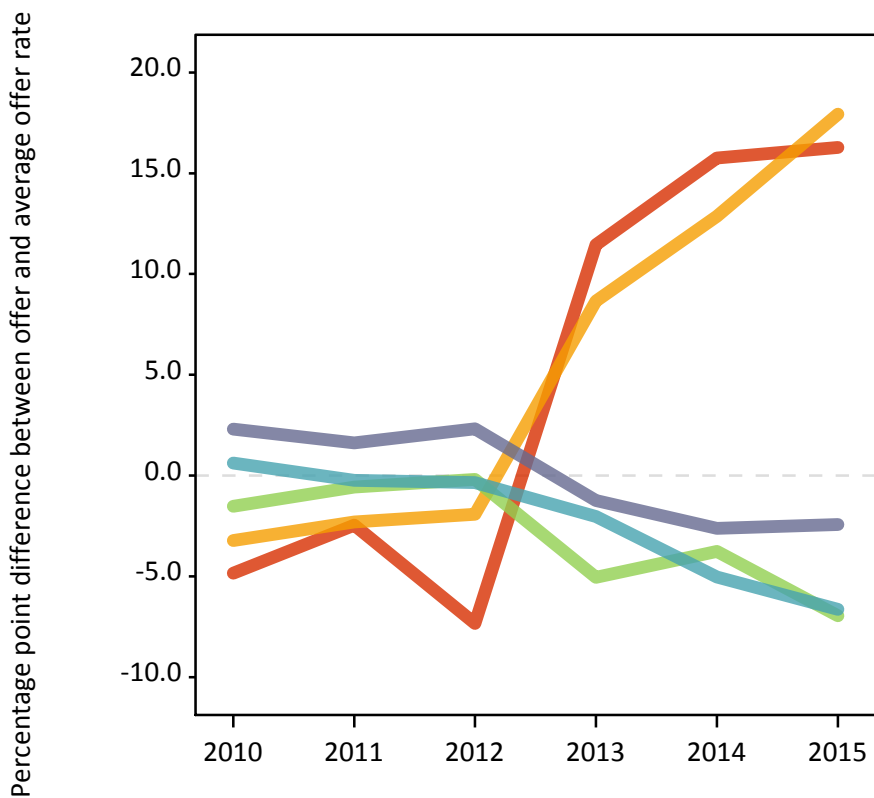
- Quintile 1
- Quintile 2
- Quintile 3
- Quintile 4
- Quintile 5



P.14 Percentage point difference between 18 year old, Scotland domiciled offer rate and average offer rate by SIMD quintile

Note: The line for a group is not plotted when that group made fewer than 50 applications in any of the years from 2010-2015.

- Quintile 1
- Quintile 2
- Quintile 3
- Quintile 4
- Quintile 5



P.15 18 year old applicants by ethnic group

Statistic	Ethnic group	2010	2011	2012	2013	2014	2015
June deadline applicants	Asian	230	285	340	275	330	380
	Black	50	75	70	75	90	90
	Mixed	100	160	130	130	140	155
	White	6,605	7,195	6,935	6,340	6,355	6,620
	Other	15	30	30	35	45	45
Placed June deadline applicants	Asian	20	25	25	20	35	45
	Black	5	5	5	5	10	5
	Mixed	20	30	15	10	20	20
	White	1,060	985	780	820	900	970
	Other	0	5	5	0	5	5
All placed applicants	Asian	25	25	30	30	40	60
	Black	5	5	5	10	20	10
	Mixed	20	30	15	10	25	25
	White	1,095	1,020	835	905	985	1,065
	Other	0	5	5	5	5	5
June deadline applicants per 10,000 population	Asian	36.9	45.1	52.5	42.0	48.8	53.6
	Black	19.9	26.7	24.9	25.9	29.4	28.6
	Mixed	42.7	65.6	49.9	48.1	48.3	50.6
	White	98.5	111.1	107.4	100.7	103.0	106.3
	Other	22.1	38.3	36.2	36.4	48.3	47.8
Placed June deadline applicants per 10,000 population	Asian	3.6	4.1	3.6	3.3	4.9	6.4
	Black	1.1	1.5	2.1	2.4	3.3	2.2
	Mixed	8.2	12.0	6.5	3.3	6.3	6.2
	White	15.8	15.2	12.0	13.0	14.6	15.6
	Other	0.0	3.7	3.4	0.0	3.2	6.2
All placed applicants per 10,000 population	Asian	3.9	4.3	4.5	4.2	6.2	8.2
	Black	1.5	1.5	2.5	3.0	5.9	3.8
	Mixed	8.6	12.0	6.5	3.3	8.3	8.8
	White	16.3	15.8	13.0	14.4	15.9	17.1
	Other	0.0	3.7	4.5	5.5	4.3	7.3

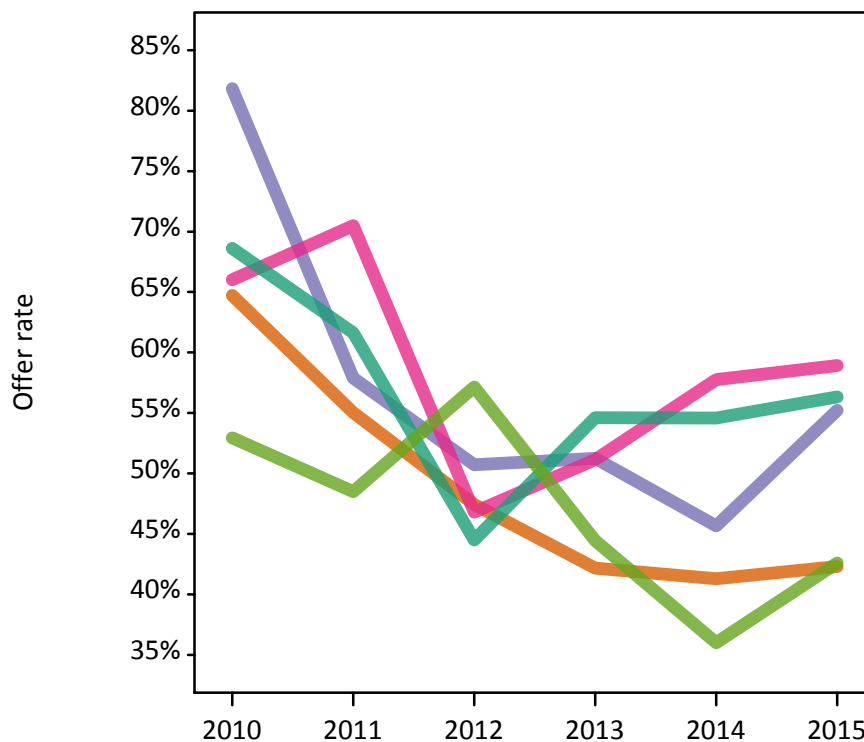
P.16 18 year old applications by ethnic group

Statistic	Ethnic group	2010	2011	2012	2013	2014	2015
June deadline applications	Asian	260	320	370	295	370	415
	Black	55	75	70	80	90	95
	Mixed	105	165	140	135	140	170
	White	7,530	8,110	7,735	6,930	7,060	7,390
	Other	15	35	35	35	50	55
Offers	Asian	165	175	175	125	150	175
	Black	45	45	35	40	40	55
	Mixed	70	115	65	70	80	100
	White	5,165	5,000	3,440	3,785	3,855	4,165
	Other	10	15	20	15	20	25
Offer rate	Asian	64.7%	55.0%	47.4%	42.2%	41.3%	42.3%
	Black	81.8%	57.9%	50.7%	51.3%	45.7%	55.2%
	Mixed	66.0%	70.5%	46.8%	51.1%	57.7%	58.9%
	White	68.6%	61.6%	44.5%	54.6%	54.6%	56.3%
	Other	52.9%	48.5%	57.1%	44.4%	36.0%	42.6%
Average offer rate	Asian	69.8%	61.1%	50.5%	49.4%	45.0%	48.9%
	Black	84.3%	67.6%	50.5%	55.3%	47.4%	59.3%
	Mixed	64.8%	61.7%	47.6%	54.0%	56.2%	60.6%
	White	68.4%	61.5%	44.3%	54.1%	54.3%	55.9%
	Other	51.8%	54.8%	57.4%	47.0%	45.4%	47.2%
Percentage point difference between offer rate and average offer rate	Asian	-5.0	-6.1	-3.1	-7.2	-3.7	-6.6
	Black	-2.5	-9.7	0.2	-4.0	-1.7	-4.1
	Mixed	1.2	8.8	-0.8	-2.8	1.6	-1.7
	White	0.2	0.1	0.2	0.5	0.2	0.5
	Other	N/A	N/A	N/A	N/A	-9.4	-4.6
Contribution of group to the average offer rate	Asian	0.155	0.134	0.160	0.158	0.187	0.208
	Black	0.216	0.200	0.189	0.218	0.192	0.167
	Mixed	0.163	0.124	0.133	0.167	0.118	0.136
	White	0.951	0.938	0.934	0.935	0.929	0.923
	Other	0.077	0.045	0.063	0.163	0.092	0.150

P.17 18 year old offer rate by ethnic group

Note: The line for a group is not plotted when that group made fewer than 10 applications in any of the years from 2010-2015.

- Asian
- Black
- Mixed
- White
- Other



P.18 Percentage point difference between 18 year old offer rate and average offer rate by ethnic group

Note: The line for a group is not plotted when that group made fewer than 50 applications in any of the years from 2010-2015.

- Asian
- Black
- Mixed
- White
- Other



P.19 Applicants (all ages)

Statistic	2010	2011	2012	2013	2014	2015
June deadline applicants	12,065	13,665	13,265	12,465	12,685	14,155
Placed June deadline applicants	2,095	2,065	1,665	1,780	1,985	2,220
All placed applicants	2,305	2,210	1,810	1,995	2,185	2,460

P.20 Applications (all ages)

Statistic	2010	2011	2012	2013	2014	2015
June deadline applications	13,985	15,800	15,260	14,135	14,540	16,240
Offers	8,240	8,220	5,870	6,680	6,815	7,565
Offer rate	58.9%	52.0%	38.5%	47.3%	46.9%	46.6%

P.21 Applicants (all ages) by sex

Statistic	Sex	2010	2011	2012	2013	2014	2015
June deadline applicants	Men	4,600	5,340	5,085	4,500	4,550	5,030
	Women	7,465	8,325	8,175	7,965	8,135	9,125
Placed June deadline applicants	Men	770	755	560	590	680	740
	Women	1,325	1,310	1,105	1,195	1,305	1,480
All placed applicants	Men	830	795	635	680	770	845
	Women	1,475	1,415	1,180	1,315	1,410	1,615

P.22 Applications (all ages) by sex

Statistic	Sex	2010	2011	2012	2013	2014	2015
June deadline applications	Men	5,325	6,170	5,910	5,165	5,300	5,875
	Women	8,655	9,630	9,350	8,965	9,245	10,365
Offers	Men	3,560	3,625	2,490	2,735	2,750	3,115
	Women	4,680	4,600	3,380	3,945	4,065	4,450
Offer rate	Men	66.9%	58.7%	42.1%	52.9%	51.9%	53.0%
	Women	54.1%	47.7%	36.1%	44.0%	44.0%	42.9%

P.23 Applicants (all ages) by POLAR3 quintile

Statistic	POLAR3 quintile	2010	2011	2012	2013	2014	2015
June deadline applicants	Quintile 1	745	845	820	755	790	985
	Quintile 2	1,330	1,595	1,445	1,425	1,465	1,695
	Quintile 3	1,750	1,995	1,985	1,820	1,860	2,145
	Quintile 4	3,080	3,480	3,320	3,085	3,135	3,495
	Quintile 5	5,125	5,710	5,660	5,335	5,405	5,795
Placed June deadline applicants	Quintile 1	115	130	110	140	165	165
	Quintile 2	235	230	180	225	240	330
	Quintile 3	275	235	200	255	255	300
	Quintile 4	555	550	425	455	510	580
	Quintile 5	910	915	750	700	810	845
All placed applicants	Quintile 1	130	140	125	160	185	175
	Quintile 2	260	250	190	255	270	350
	Quintile 3	300	255	215	285	275	345
	Quintile 4	620	580	465	505	560	645
	Quintile 5	990	975	815	785	895	935

P.24 Applications (all ages) by POLAR3 quintile

Statistic	POLAR3 quintile	2010	2011	2012	2013	2014	2015
June deadline applications	Quintile 1	880	1,015	955	905	950	1,160
	Quintile 2	1,555	1,900	1,710	1,655	1,725	1,990
	Quintile 3	1,985	2,270	2,200	2,015	2,075	2,430
	Quintile 4	3,580	4,035	3,895	3,545	3,570	4,000
	Quintile 5	5,945	6,535	6,465	5,965	6,190	6,615
Offers	Quintile 1	465	455	320	465	490	595
	Quintile 2	870	925	595	815	810	985
	Quintile 3	1,105	1,105	815	900	935	1,110
	Quintile 4	2,100	2,070	1,455	1,610	1,635	1,800
	Quintile 5	3,675	3,640	2,670	2,865	2,935	3,055
Offer rate	Quintile 1	52.9%	44.9%	33.8%	51.2%	51.5%	51.1%
	Quintile 2	56.0%	48.8%	34.7%	49.3%	46.8%	49.6%
	Quintile 3	55.7%	48.7%	37.0%	44.7%	45.1%	45.6%
	Quintile 4	58.7%	51.3%	37.4%	45.5%	45.8%	45.0%
	Quintile 5	61.8%	55.7%	41.3%	48.0%	47.4%	46.2%

P.25 Scotland domiciled applicants (all ages) by SIMD quintile

Statistic	SIMD quintile	2010	2011	2012	2013	2014	2015
June deadline applicants	Quintile 1	880	1,005	1,010	1,010	1,125	1,320
	Quintile 2	1,260	1,315	1,340	1,305	1,400	1,710
	Quintile 3	1,590	1,695	1,720	1,660	1,865	2,055
	Quintile 4	2,200	2,465	2,430	2,410	2,435	2,765
	Quintile 5	2,730	3,115	3,085	2,995	3,030	3,380
Placed June deadline applicants	Quintile 1	185	185	130	240	255	305
	Quintile 2	235	220	180	280	340	390
	Quintile 3	310	300	240	225	290	295
	Quintile 4	440	410	365	375	405	450
	Quintile 5	540	515	435	425	415	500
All placed applicants	Quintile 1	205	195	145	275	275	325
	Quintile 2	275	235	190	325	360	415
	Quintile 3	345	325	255	250	305	315
	Quintile 4	485	440	395	415	430	480
	Quintile 5	585	555	460	470	445	530

P.26 Scotland domiciled applications (all ages) by SIMD quintile

Statistic	SIMD quintile	2010	2011	2012	2013	2014	2015
June deadline applications	Quintile 1	1,115	1,290	1,250	1,240	1,365	1,625
	Quintile 2	1,535	1,600	1,645	1,585	1,705	2,035
	Quintile 3	1,895	2,025	2,010	1,915	2,165	2,360
	Quintile 4	2,675	3,020	2,930	2,810	2,865	3,295
	Quintile 5	3,225	3,600	3,565	3,390	3,505	3,905
Offers	Quintile 1	550	545	345	660	730	865
	Quintile 2	780	720	505	830	925	1,135
	Quintile 3	1,060	985	665	750	905	900
	Quintile 4	1,570	1,525	1,020	1,240	1,240	1,370
	Quintile 5	2,050	1,960	1,355	1,585	1,660	1,730
Offer rate	Quintile 1	49.6%	42.3%	27.7%	53.3%	53.5%	53.3%
	Quintile 2	50.8%	45.0%	30.7%	52.4%	54.2%	55.7%
	Quintile 3	55.9%	48.7%	33.0%	39.3%	41.8%	38.1%
	Quintile 4	58.7%	50.5%	34.8%	44.2%	43.3%	41.6%
	Quintile 5	63.6%	54.4%	38.0%	46.7%	47.3%	44.2%

P.27 Applicants (all ages) by ethnic group

Statistic	Ethnic group	2010	2011	2012	2013	2014	2015
June deadline applicants	Asian	495	610	665	600	670	820
	Black	210	265	245	230	295	295
	Mixed	195	275	250	245	265	305
	White	11,065	12,370	11,955	11,235	11,290	12,560
	Other	45	65	85	80	100	90
Placed June deadline applicants	Asian	55	50	50	55	65	90
	Black	10	20	15	20	25	30
	Mixed	30	40	35	20	30	40
	White	1,985	1,940	1,555	1,675	1,845	2,035
	Other	0	5	5	5	10	10
All placed applicants	Asian	60	50	55	65	80	120
	Black	15	25	20	25	30	40
	Mixed	35	40	35	25	40	55
	White	2,115	2,055	1,685	1,840	2,000	2,220
	Other	5	5	5	10	20	10

P.28 Applications (all ages) by ethnic group

Statistic	Ethnic group	2010	2011	2012	2013	2014	2015
June deadline applications	Asian	560	675	750	665	745	925
	Black	220	280	260	250	320	315
	Mixed	225	300	275	260	280	345
	White	12,860	14,390	13,810	12,790	13,005	14,455
	Other	45	75	90	85	110	105
Offers	Asian	285	305	295	275	260	335
	Black	100	100	80	85	90	115
	Mixed	125	175	115	110	135	170
	White	7,670	7,575	5,320	6,155	6,255	6,865
	Other	15	30	35	30	40	40
Offer rate	Asian	51.3%	45.0%	39.0%	41.2%	34.8%	36.5%
	Black	45.9%	35.4%	31.0%	34.5%	28.0%	36.5%
	Mixed	55.5%	58.0%	41.2%	42.1%	48.9%	49.7%
	White	59.6%	52.6%	38.5%	48.1%	48.1%	47.5%
	Other	31.9%	37.8%	38.0%	32.6%	34.5%	39.4%

Technical Notes and Definitions

UCAS undergraduate scheme

Adjustment

Adjustment allows applicants who have met and exceeded the terms of their conditional firm offer to seek and find a place at another provider whilst keeping their place at their original firm choice provider.

Clearing

Clearing is a route for applicants that are not placed and holding no offers to find a place on courses with vacancies.

Cycle year

The UCAS application cycle which runs from September to October the following year. For example the 2015 cycle runs from September 2014 through to October 2015.

End of cycle

The point in the cycle to which the numbers in this report refer, and the point at which the cycle is closed such that no more applications or offers can be made, and no more applicants can be placed. Numbers reported at the end of cycle exclude information on a small number of applicants who cancelled during the cycle.

Extra

Applicants who are unsuccessful in obtaining an offer or decline all offers may be eligible to apply through Extra, where they can apply to one further course at a time. Extra operates from 25 February until early July. It provides applicants who are eligible the possibility of obtaining an offer before exam results are published and Clearing starts.

June 30 deadline

The deadline for main scheme applications. Applicants who apply after this date will go directly into Clearing.

Record of Prior Acceptance (RPA)

RPA is an acceptance route used when a provider informs UCAS of applicants it has accepted outside of the normal application process (e.g. individuals who have applied directly to the provider).

Reporting groups

Ethnic group

High level grouping of ethnic origin as declared by the applicant: 'White', 'Black', 'Asian', 'Mixed', 'Other', 'Unknown'. Applicants who declare themselves as 'Unknown' ethnic origin are not reported in these tables, but are included in the associated csv data file.

POLAR3 quintile

Developed by HEFCE, POLAR3 classifies small areas across the UK into five groups according to their level of young participation in Higher Education. Each of these groups represents around 20 per cent of young people and is ranked from Quintile 1 (areas with the lowest young participation rates, considered as the most disadvantaged) to Quintile 5 (highest young participation rates, considered most advantaged). POLAR3 is based on the participation rates of young people between 2005 and 2009 who entered Higher Education between 2005-06 and 2010-11, therefore is most suitable for applicants aged 19 and under. These groups are assigned using the postcode declared by the applicant at the time of their application. If a UK postcode is invalid, considered unsafe for measurement or there is no link to Census geography possible then the applicant is not assigned to a quintile. Applicants with no POLAR3 quintile are not reported.

Sex

Sex as declared by the applicant.

SIMD quintile

Scottish index of multiple deprivation (SIMD) for 2012 identifies small area concentrations of multiple deprivation across all of Scotland, providing a relative measure of deprivation amongst 6505 small areas (data zones) based on 7 socio-economic domains. These small areas are classified into five groups ranked from Quintile 1 (considered the most deprived) to Quintile 5 (considered least deprived), with equal populations in each quintile. Quintiles are assigned using the postcode declared by the applicant, applicants declaring invalid postcodes are classified as 'Not assigned' and are not reported.

SIMD is only defined for applicants domiciled in Scotland, therefore any applicants domiciled outside of Scotland cannot be assigned to an SIMD quintile and so are not reported for this measure.

SIMD is only reported for providers in Scotland. Application and entry rates by SIMD are reported in the 2015 End of Cycle Report and the 2016 cycle January deadline application rate report.

Statistics reported in the tables

All placed applicants

The number of applicants placed for entry into higher education at the provider through one of their choices, including any choices made through Extra, or via Adjustment, Clearing or RPA.

All placed applicants per 10,000 population

The number of total UK domiciled 18 year old placed applicants for entry into higher education at the provider divided by the number of UK 18 year olds in the population, multiplied by 10,000. This gives the number of 18 year olds, for every 10,000 in the population, that were placed at the provider through one of their choices, including any choices made through Extra, or via Adjustment, Clearing or RPA. It is an alternative way of expressing the entry rate to a provider. By referencing the underlying population this statistic shows how the number of placed applicants is changing in relation to the available pool of potential applicants and so gives the chance that somebody from the group will be placed at a provider.

This statistic is only reported for 18 year olds.

Average offer rate

The offer rate that you might expect if the predicted grades and subject choice of applicants were the only factors that influenced whether an applicant was made an offer by the provider. The average offer rate is calculated by dividing applicants according to their specific combination of grades (for A levels the best three predicted grades are used, for BTECs, International Baccalaureate and Scottish Highers and Advanced Highers, predicted grades along with any grades already achieved upon applying are used) and subject choice. For each combination the number of main scheme offers is divided by the number of main scheme applications, to give an overall offer rate. This is then multiplied by the number of applications made by the group for which the average offer rate is being calculated (for example POLAR3 quintile 1), to give an average number of offers for that group. These average number of offers are then added together across all combinations of predicted grade and subject and divided by the number of main scheme applications from the group to give the average offer rate.

The average offer rate does not attempt to control for any other factors that may play a part in the decision to make an offer, such as the subject of the qualifications studied, their relevance to a course, or the grade in each subject; higher numbers of A levels being studied; the exact profile of grades predicted; personal statements; teacher references; interviews; or any other criteria (such as work experience or portfolios) that may be part of the admissions decision.

This statistic is only reported for 18 year olds.

Contribution of group to the average offer rate

The way in which the average offer rate is defined means that the pattern of application and offers of a group (for example POLAR3 quintile 1) will always contribute, in part, to the average offer rate for that group. When this contribution is large, the average offer rate will mainly reflect the patterns for the group, meaning that the value of the average offer rate will be similar to the offer rate, the percentage point difference statistic will be small, and any real difference between the offer rate and what might be expected given the predicted grades and subject choices of the applicants will be difficult to detect.

Values of the contribution of group to the average offer rate range between 0 and 1. The closer the value is to 1 the greater the contribution a group makes to its own average offer rate.

This statistic is only reported for 18 year olds.

Placed June deadline applicants

An applicant who has been placed for entry into higher education at the provider through a June deadline application.

Placed June deadline applicants per 10,000 population

The number of UK domiciled 18 year old placed June deadline applicants at the provider divided by the number of UK 18 year olds in the population, multiplied by 10,000. This gives the number of 18 year olds, for every 10,000 in the population, that were placed at the provider through one of their June deadline applications. It is an alternative way of expressing the entry rate to a provider, but for placed June deadline applicants only. By referencing the underlying population this statistic shows how the number of placed June deadline applicants is changing in relation to the available pool of potential 18 year old applicants and so gives the chance that somebody from the group will be placed at a provider through a June deadline application.

This statistic is only reported for 18 year olds.

June deadline applications

An application (or choice) to a course in higher education to the provider that is made by the June 30 deadline. Each applicant can make up to five choices this way. The number of June deadline applications does not include choices made through the following routes: Clearing, Extra, Adjustment and RPAs. Applications made to October deadline courses received after the October deadline are not included in these statistics.

June deadline applicants

The number of applicants that made at least one application to the provider by the June 30 deadline.

June deadline applicants per 10,000 population

The number of UK domiciled 18 year old June deadline applicants to the provider divided by the number of UK 18 year olds in the population, multiplied by 10,000. This gives the number of 18 year olds, for every 10,000 in the population, who applied by the June 30 deadline. It is equivalent to the application rate. By referencing the underlying population this statistic shows how the number of June deadline applicants is changing in relation to the available pool of potential 18 year old applicants and so gives the chance that somebody from the group will apply to a provider by the June 30 deadline.

This statistic is only reported for 18 year olds.

Offers

An offer is defined as a provider's decision in response to an application to offer a place to an applicant, often subject to the applicant satisfying academic and/or other criteria, via a June deadline application (i.e. does not cover choices made through the following routes: Clearing, Extra, Adjustment and RPAs).

Offer rate

The number of offers made divided by the number of June deadline applications. This gives the proportion of all June deadline applications to the provider that received an offer.

Percentage point difference between offer rate and average offer rate

The offer rate minus the average offer rate.

The percentage point difference can be compared to the expected range of statistical variation resulting from the calculation of the average offer rate using the Average Offer Rate Lookup Table. Where the value of the percentage point difference lies outside of this range, the percentage point difference may be considered to represent a real difference between the offer rate and the average offer rate.

Other definitions

Age

This analysis uses country-specific age definitions that align with the cut off points for school and college cohorts within the different administrations of the UK. For England and Wales, ages are defined on the 31 August, for Northern Ireland on the 1 July and for Scotland on the 28 February the following year. Defining ages in this way matches the assignment of children to school cohorts. For applicants outside of the UK a cohort cut off of 31 August has been used.

Provider

A higher education provider - a university or college.

UK domiciled

Declared area of permanent residence within England, Northern Ireland, Scotland and Wales. Applicants from the Channel Islands and Isle of Man are not included.