

E42 Edge Hill University

Cycle years: 2010 - 2015

Cycle Reference Point: End of Cycle

Applicant coverage: UK domiciled

Reporting groups: Sex, POLAR3, ethnic group

Applicant statistics: June deadline applicants, placed June deadline applicants, all placed applicants, June deadline applicants per 10,000 population, placed June deadline applicants per 10,000 population, all placed applicants per 10,000 population

Application statistics: June deadline applications, offers, offer rate, average offer rate, percentage point difference between offer rate and average offer rate, contribution of group to the average offer rate

Non-disclosure controls: To avoid the disclosure of information about any individual the following measures are taken

- Applicants, placed applicants, applications and offers are rounded to the nearest 5.
- Applicants/placed applicants per 10,000 population figures are reported as 0 if the applicant/placed applicant figures are rounded to 0.
- All statistics related to the offer rate are not reported when the number of applications for a group is less than 10. The percentage point difference between the offer rate and the average offer rate is not reported when the number of applications for a group is less than 50.
- Offer rates are reported as 0% if there are fewer than 5 offers, and 100% if the number of offers is within 5 of the number of applications. When the offer rate is reported as 0% or 100%, it is reported in italics.

Contents:

18 year old applicants:	P.1
18 year old applications:	P.2
18 year old applicants by sex:	P.3
18 year old applications by sex:	P.4
18 year old applicants by POLAR3 quintile:	P.7
18 year old applications by POLAR3 quintile:	P.8
18 year old applicants by ethnic group:	P.11
18 year old applications by ethnic group:	P.12
Applicants (all ages):	P.15
Applications (all ages):	P.16
Applicants (all ages) by sex:	P.17
Applications (all ages) by sex:	P.18
Applicants (all ages) by POLAR3 quintile:	P.19
Applications (all ages) by POLAR3 quintile:	P.20
Applicants (all ages) by ethnic group:	P.21
Applications (all ages) by ethnic group:	P.22

P.1 18 year old applicants

Statistic	2010	2011	2012	2013	2014	2015
June deadline applicants	7,275	7,370	8,720	8,520	8,195	8,965
Placed June deadline applicants	1,315	1,495	1,710	1,615	1,740	1,880
All placed applicants	1,700	1,905	1,980	1,825	1,935	2,090
June deadline applicants per 10,000 population	92.1	95.7	112.7	112.0	108.8	117.0
Placed June deadline applicants per 10,000	16.7	19.4	22.1	21.2	23.1	24.6
All placed applicants per 10,000 population	21.5	24.7	25.6	24.0	25.7	27.3

P.2 18 year old applications

Statistic	2010	2011	2012	2013	2014	2015
June deadline applications	8,100	8,185	9,605	9,390	9,045	9,820
Offers	5,570	5,715	6,380	6,680	6,500	7,200
Offer rate	68.8%	69.8%	66.4%	71.1%	71.9%	73.3%

P.3 18 year old applicants by sex

Statistic	Sex	2010	2011	2012	2013	2014	2015
June deadline applicants	Men	2,325	2,335	2,605	2,600	2,380	2,730
	Women	4,950	5,035	6,110	5,920	5,815	6,235
Placed June deadline applicants	Men	485	525	575	555	590	665
	Women	830	975	1,135	1,060	1,145	1,215
All placed applicants	Men	610	675	670	620	640	735
	Women	1,090	1,230	1,310	1,205	1,295	1,355
June deadline applicants per 10,000 population	Men	57.9	59.3	65.7	66.6	61.5	69.6
	Women	127.6	133.7	162.1	159.7	158.9	166.8
Placed June deadline applicants per 10,000 population	Men	12.1	13.3	14.5	14.2	15.3	17.0
	Women	21.4	25.8	30.1	28.6	31.3	32.5
All placed applicants per 10,000 population	Men	15.2	17.2	16.9	15.9	16.6	18.8
	Women	28.2	32.6	34.7	32.5	35.4	36.3

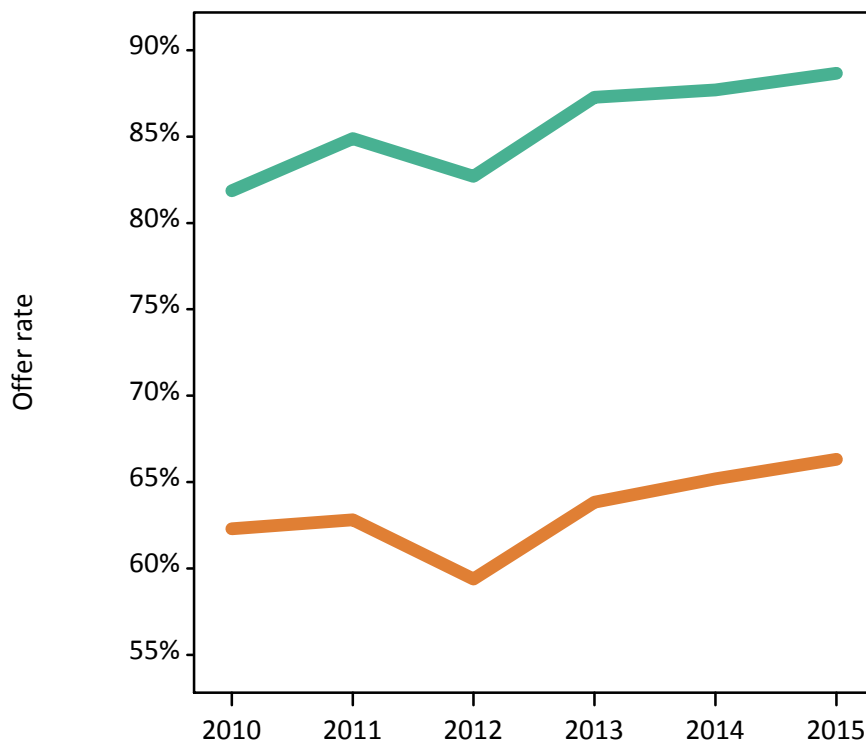
P.4 18 year old applications by sex

Statistic	Sex	2010	2011	2012	2013	2014	2015
June deadline applications	Men	2,675	2,595	2,910	2,925	2,685	3,080
	Women	5,425	5,590	6,690	6,465	6,360	6,745
Offers	Men	2,190	2,200	2,410	2,550	2,355	2,730
	Women	3,380	3,510	3,975	4,130	4,145	4,470
Offer rate	Men	81.9%	84.9%	82.7%	87.3%	87.7%	88.7%
	Women	62.3%	62.8%	59.4%	63.8%	65.2%	66.3%
Average offer rate	Men	80.6%	83.9%	82.2%	86.9%	85.7%	86.1%
	Women	62.9%	63.3%	59.6%	64.0%	66.0%	67.5%
Percentage point difference between offer rate and average offer rate	Men	1.3	1.0	0.5	0.4	2.0	2.6
	Women	-0.6	-0.4	-0.2	-0.2	-0.9	-1.2
Contribution of group to the average offer rate	Men	0.522	0.519	0.502	0.537	0.524	0.543
	Women	0.764	0.777	0.783	0.790	0.799	0.791

P.5 18 year old offer rate by sex

Note: The line for a group is not plotted when that group made fewer than 10 applications in any of the years from 2010-2015.

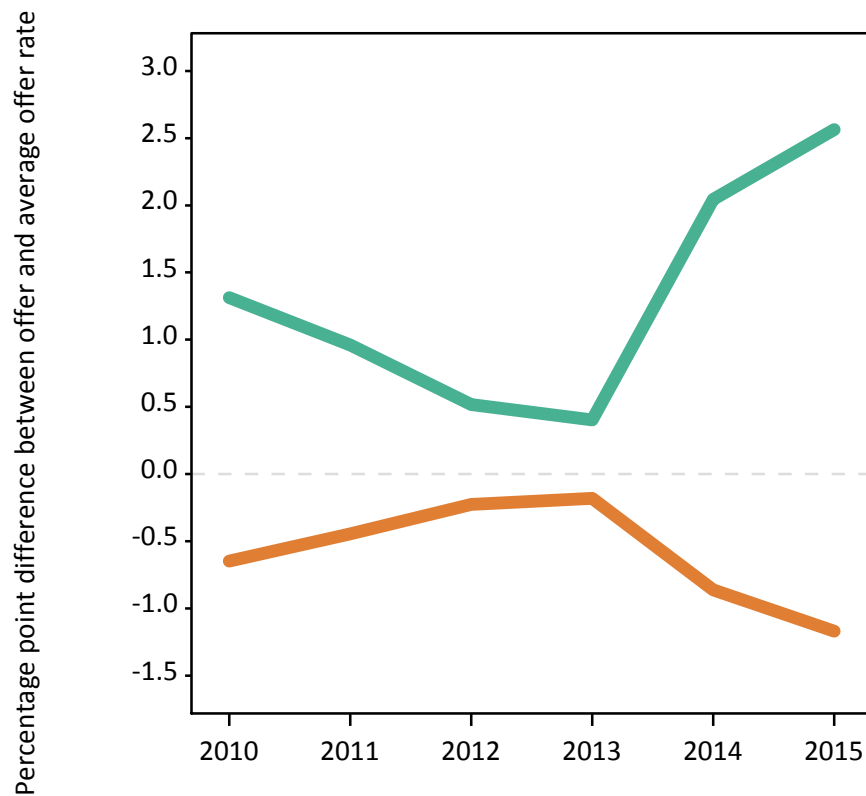
Men
Women



P.6 Percentage point difference between 18 year old offer rate and average offer rate by sex

Note: The line for a group is not plotted when that group made fewer than 50 applications in any of the years from 2010-2015.

Men
Women



P.7 18 year old applicants by POLAR3 quintile

Statistic	POLAR3 quintile	2010	2011	2012	2013	2014	2015
June deadline applicants	Quintile 1	1,445	1,470	1,705	1,690	1,745	1,850
	Quintile 2	1,460	1,515	1,840	1,865	1,780	1,925
	Quintile 3	1,485	1,510	1,745	1,760	1,645	1,840
	Quintile 4	1,630	1,695	1,930	1,840	1,760	1,890
	Quintile 5	1,245	1,170	1,490	1,355	1,260	1,455
Placed June deadline applicants	Quintile 1	280	330	345	330	345	370
	Quintile 2	260	305	345	330	360	380
	Quintile 3	275	295	365	325	360	400
	Quintile 4	280	345	390	365	400	410
	Quintile 5	225	220	265	260	270	315
All placed applicants	Quintile 1	340	400	400	370	385	410
	Quintile 2	340	375	400	385	400	425
	Quintile 3	355	385	415	365	400	450
	Quintile 4	365	445	460	410	445	455
	Quintile 5	300	300	300	285	310	345
June deadline applicants per 10,000 population	Quintile 1	97.7	102.2	119.7	121.1	125.5	132.0
	Quintile 2	95.0	100.8	122.7	126.6	121.6	129.5
	Quintile 3	93.4	98.3	113.1	115.5	109.4	120.0
	Quintile 4	102.4	108.3	121.6	117.6	114.1	120.6
	Quintile 5	73.3	70.6	88.6	82.1	77.1	86.8
Placed June deadline applicants per 10,000 population	Quintile 1	18.8	22.9	24.1	23.8	24.8	26.6
	Quintile 2	16.9	20.4	23.1	22.3	24.7	25.7
	Quintile 3	17.3	19.2	23.7	21.4	24.1	26.2
	Quintile 4	17.6	22.0	24.5	23.3	25.8	26.3
	Quintile 5	13.2	13.2	15.7	15.8	16.7	18.7
All placed applicants per 10,000 population	Quintile 1	23.0	27.7	28.1	26.5	27.6	29.4
	Quintile 2	22.1	24.8	26.6	26.3	27.3	28.5
	Quintile 3	22.3	25.0	27.0	23.9	26.4	29.4
	Quintile 4	22.8	28.5	29.0	26.2	28.9	29.1
	Quintile 5	17.8	18.2	17.9	17.4	18.9	20.7

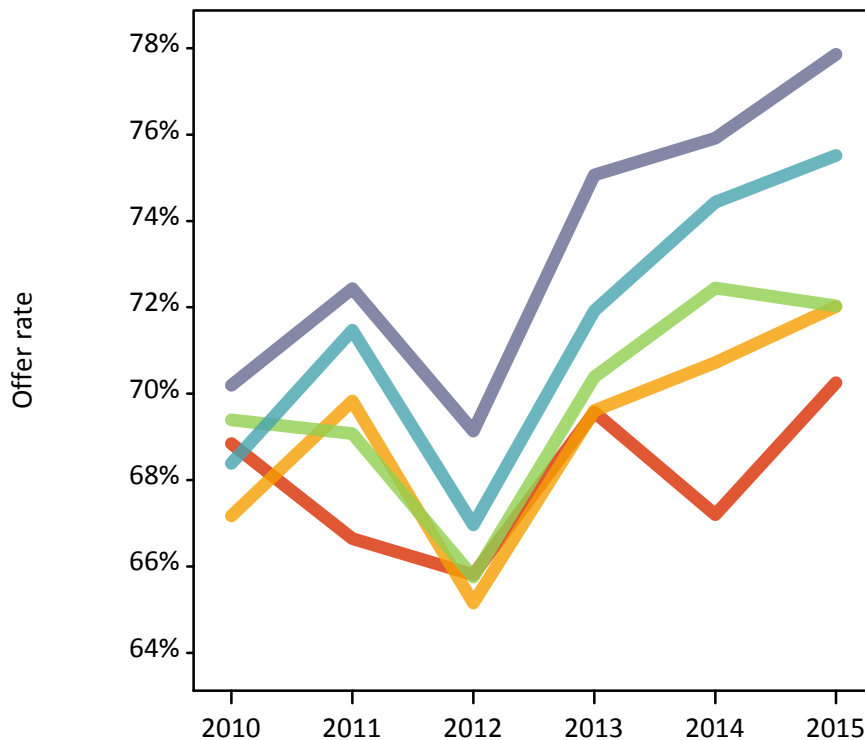
P.8 18 year old applications by POLAR3 quintile

Statistic	POLAR3 quintile	2010	2011	2012	2013	2014	2015
June deadline applications	Quintile 1	1,640	1,680	1,930	1,885	1,950	2,045
	Quintile 2	1,650	1,695	2,045	2,075	1,975	2,130
	Quintile 3	1,625	1,660	1,895	1,900	1,810	2,000
	Quintile 4	1,825	1,880	2,130	2,050	1,935	2,070
	Quintile 5	1,350	1,255	1,595	1,475	1,365	1,565
Offers	Quintile 1	1,130	1,120	1,270	1,310	1,310	1,435
	Quintile 2	1,110	1,185	1,335	1,445	1,395	1,535
	Quintile 3	1,125	1,150	1,245	1,335	1,310	1,440
	Quintile 4	1,250	1,345	1,425	1,475	1,440	1,565
	Quintile 5	950	910	1,100	1,110	1,035	1,220
Offer rate	Quintile 1	68.8%	66.6%	65.8%	69.6%	67.2%	70.3%
	Quintile 2	67.2%	69.8%	65.2%	69.6%	70.7%	72.0%
	Quintile 3	69.4%	69.1%	65.8%	70.4%	72.4%	72.0%
	Quintile 4	68.4%	71.5%	67.0%	71.9%	74.4%	75.5%
	Quintile 5	70.2%	72.4%	69.1%	75.1%	75.9%	77.9%
Average offer rate	Quintile 1	69.3%	68.2%	66.6%	71.0%	69.8%	71.1%
	Quintile 2	67.9%	70.2%	65.9%	69.5%	72.0%	72.4%
	Quintile 3	68.2%	69.6%	65.9%	71.3%	72.3%	72.4%
	Quintile 4	68.7%	70.7%	66.8%	71.0%	72.7%	75.2%
	Quintile 5	69.7%	70.3%	67.2%	73.4%	73.1%	76.0%
Percentage point difference between offer rate and average offer rate	Quintile 1	-0.5	-1.5	-0.8	-1.5	-2.6	-0.9
	Quintile 2	-0.8	-0.4	-0.7	0.1	-1.3	-0.4
	Quintile 3	1.2	-0.5	-0.2	-0.9	0.2	-0.4
	Quintile 4	-0.3	0.8	0.2	0.9	1.7	0.3
	Quintile 5	0.5	2.1	1.9	1.6	2.9	1.8
Contribution of group to the average offer rate	Quintile 1	0.276	0.273	0.261	0.255	0.277	0.272
	Quintile 2	0.266	0.262	0.261	0.270	0.267	0.267
	Quintile 3	0.258	0.258	0.248	0.254	0.251	0.257
	Quintile 4	0.283	0.282	0.280	0.269	0.277	0.261
	Quintile 5	0.234	0.235	0.224	0.231	0.220	0.231

P.9 18 year old offer rate by POLAR3 quintile

Note: The line for a group is not plotted when that group made fewer than 10 applications in any of the years from 2010-2015.

- Quintile 1
- Quintile 2
- Quintile 3
- Quintile 4
- Quintile 5



P.10 Percentage point difference between 18 year old offer rate and average offer rate by POLAR3 quintile

Note: The line for a group is not plotted when that group made fewer than 50 applications in any of the years from 2010-2015.

- Quintile 1
- Quintile 2
- Quintile 3
- Quintile 4
- Quintile 5



P.11 18 year old applicants by ethnic group

Statistic	Ethnic group	2010	2011	2012	2013	2014	2015
June deadline applicants	Asian	220	255	330	360	310	390
	Black	80	80	130	165	140	145
	Mixed	150	140	185	165	185	210
	White	6,800	6,880	8,045	7,790	7,530	8,170
	Other	10	5	20	25	25	30
Placed June deadline applicants	Asian	20	30	40	20	25	45
	Black	10	20	15	15	20	25
	Mixed	25	25	40	20	30	30
	White	1,260	1,420	1,610	1,550	1,660	1,775
	Other	0	0	0	5	0	5
All placed applicants	Asian	35	45	50	30	35	50
	Black	20	30	15	20	25	30
	Mixed	35	40	45	25	30	35
	White	1,595	1,785	1,855	1,730	1,840	1,960
	Other	0	0	0	5	0	5
June deadline applicants per 10,000 population	Asian	35.3	40.5	51.1	54.9	45.7	55.4
	Black	31.3	28.9	46.5	55.9	46.2	45.6
	Mixed	64.3	57.8	70.3	61.4	63.6	68.8
	White	101.4	106.3	124.6	123.8	122.0	131.1
	Other	15.6	8.6	22.6	27.6	27.9	33.2
Placed June deadline applicants per 10,000 population	Asian	3.4	4.4	6.5	3.3	3.8	6.2
	Black	3.1	6.9	4.6	4.4	6.3	7.2
	Mixed	10.4	11.1	15.4	7.4	10.1	10.1
	White	18.8	21.9	25.0	24.7	26.9	28.5
	Other	0.0	0.0	0.0	7.7	0.0	3.1
All placed applicants per 10,000 population	Asian	5.7	7.1	7.9	4.4	5.2	6.9
	Black	7.3	11.0	6.0	6.7	7.9	8.8
	Mixed	16.0	16.1	17.7	9.2	10.4	11.7
	White	23.8	27.6	28.7	27.5	29.8	31.5
	Other	0.0	0.0	0.0	7.7	0.0	5.2

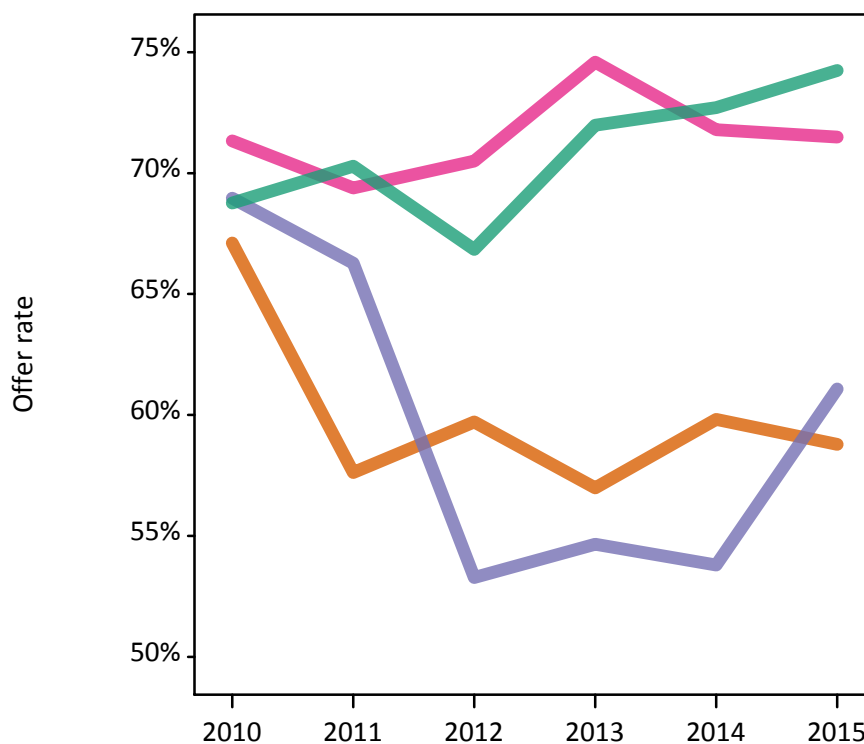
P.12 18 year old applications by ethnic group

Statistic	Ethnic group	2010	2011	2012	2013	2014	2015
June deadline applications	Asian	230	270	350	370	320	410
	Black	85	85	135	170	145	150
	Mixed	155	145	200	180	195	220
	White	7,605	7,665	8,885	8,625	8,350	8,995
	Other	10	5	20	25	25	35
Offers	Asian	155	155	210	210	190	240
	Black	60	55	75	95	80	90
	Mixed	110	100	140	135	140	160
	White	5,230	5,390	5,940	6,210	6,070	6,680
	Other	10	5	10	20	10	20
Offer rate	Asian	67.1%	57.6%	59.7%	57.0%	59.8%	58.8%
	Black	69.0%	66.3%	53.3%	54.7%	53.8%	61.1%
	Mixed	71.3%	69.4%	70.5%	74.6%	71.8%	71.5%
	White	68.8%	70.3%	66.9%	72.0%	72.7%	74.2%
	Other	100.0%	N/A	45.5%	70.4%	46.2%	63.6%
Average offer rate	Asian	72.2%	67.0%	66.1%	66.3%	65.6%	66.9%
	Black	70.8%	77.6%	66.1%	70.7%	67.9%	70.9%
	Mixed	73.1%	75.3%	71.5%	76.2%	75.7%	76.2%
	White	68.5%	69.7%	66.3%	71.2%	72.1%	73.6%
	Other	77.1%	N/A	73.5%	79.2%	67.7%	77.9%
Percentage point difference between offer rate and average offer rate	Asian	-5.1	-9.3	-6.4	-9.3	-5.8	-8.1
	Black	-1.8	-11.3	-12.9	-16.0	-14.1	-9.8
	Mixed	-1.8	-5.9	-1.0	-1.6	-3.9	-4.7
	White	0.2	0.6	0.5	0.8	0.6	0.7
	Other	N/A	N/A	N/A	N/A	N/A	N/A
Contribution of group to the average offer rate	Asian	0.122	0.112	0.123	0.128	0.114	0.119
	Black	0.075	0.128	0.066	0.094	0.126	0.080
	Mixed	0.090	0.096	0.095	0.080	0.084	0.093
	White	0.944	0.943	0.931	0.926	0.930	0.922
	Other	0.091	N/A	0.117	0.077	0.049	0.048

P.13 18 year old offer rate by ethnic group

Note: The line for a group is not plotted when that group made fewer than 10 applications in any of the years from 2010-2015.

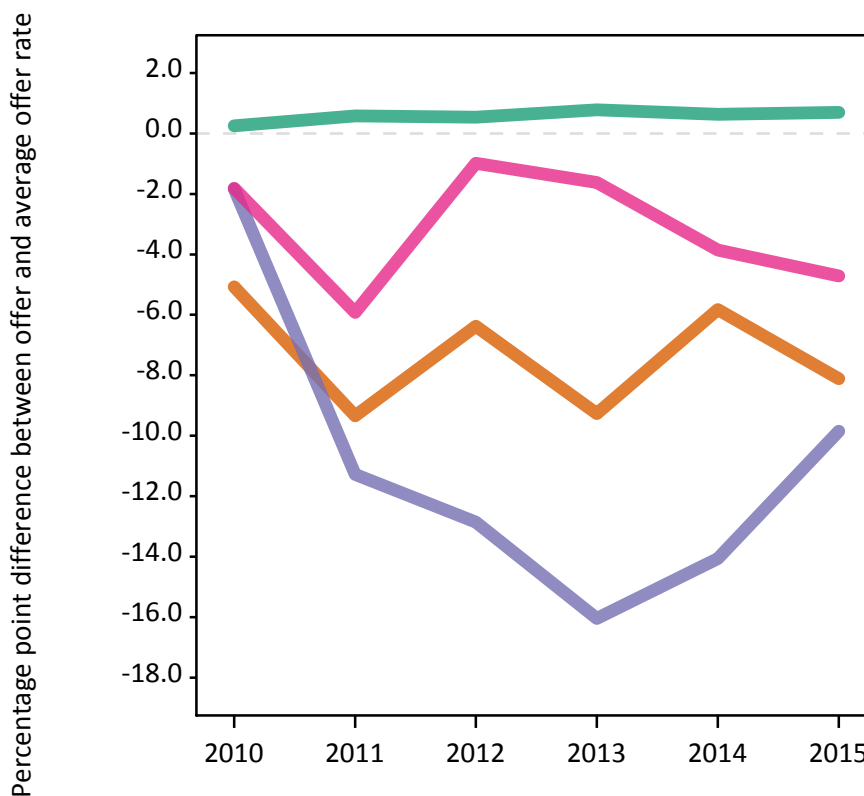
- Asian
- Black
- Mixed
- White
- Other



P.14 Percentage point difference between 18 year old offer rate and average offer rate by ethnic group

Note: The line for a group is not plotted when that group made fewer than 50 applications in any of the years from 2010-2015.

- Asian
- Black
- Mixed
- White
- Other



P.15 Applicants (all ages)

Statistic	2010	2011	2012	2013	2014	2015
June deadline applicants	13,670	14,845	16,160	16,670	16,440	16,800
Placed June deadline applicants	2,535	2,950	2,855	2,925	3,090	3,285
All placed applicants	3,545	3,835	3,485	3,525	3,770	3,970

P.16 Applications (all ages)

Statistic	2010	2011	2012	2013	2014	2015
June deadline applications	15,610	17,010	18,125	18,620	18,360	18,605
Offers	8,735	9,545	9,605	10,515	10,230	11,010
Offer rate	56.0%	56.1%	53.0%	56.5%	55.7%	59.2%

P.17 Applicants (all ages) by sex

Statistic	Sex	2010	2011	2012	2013	2014	2015
June deadline applicants	Men	4,415	4,805	4,915	5,100	4,730	5,015
	Women	9,255	10,045	11,245	11,570	11,710	11,785
Placed June deadline applicants	Men	940	1,030	1,010	1,010	1,040	1,120
	Women	1,595	1,915	1,845	1,920	2,050	2,170
All placed applicants	Men	1,285	1,370	1,270	1,230	1,275	1,365
	Women	2,255	2,465	2,215	2,295	2,495	2,605

P.18 Applications (all ages) by sex

Statistic	Sex	2010	2011	2012	2013	2014	2015
June deadline applications	Men	5,150	5,535	5,585	5,800	5,355	5,675
	Women	10,460	11,480	12,540	12,820	13,010	12,930
Offers	Men	3,565	3,835	3,835	4,245	3,825	4,280
	Women	5,170	5,705	5,770	6,270	6,405	6,730
Offer rate	Men	69.2%	69.3%	68.6%	73.2%	71.4%	75.4%
	Women	49.4%	49.7%	46.0%	48.9%	49.2%	52.0%

P.19 Applicants (all ages) by POLAR3 quintile

Statistic	POLAR3 quintile	2010	2011	2012	2013	2014	2015
June deadline applicants	Quintile 1	3,000	3,265	3,585	3,700	3,850	3,825
	Quintile 2	2,910	3,160	3,545	3,580	3,565	3,665
	Quintile 3	2,705	2,985	3,140	3,355	3,240	3,320
	Quintile 4	2,860	3,115	3,315	3,495	3,395	3,395
	Quintile 5	2,175	2,295	2,550	2,515	2,365	2,575
Placed June deadline applicants	Quintile 1	540	685	630	640	695	720
	Quintile 2	525	620	580	560	630	640
	Quintile 3	515	570	575	590	615	655
	Quintile 4	550	625	635	675	685	740
	Quintile 5	405	445	430	455	465	520
All placed applicants	Quintile 1	755	880	775	785	870	890
	Quintile 2	735	785	715	685	755	790
	Quintile 3	700	735	695	705	735	785
	Quintile 4	785	815	780	795	830	870
	Quintile 5	560	620	520	545	570	630

P.20 Applications (all ages) by POLAR3 quintile

Statistic	POLAR3 quintile	2010	2011	2012	2013	2014	2015
June deadline applications	Quintile 1	3,460	3,835	4,115	4,180	4,345	4,300
	Quintile 2	3,330	3,640	3,990	4,035	4,010	4,070
	Quintile 3	3,055	3,360	3,470	3,680	3,600	3,640
	Quintile 4	3,310	3,600	3,755	3,920	3,790	3,770
	Quintile 5	2,425	2,550	2,770	2,775	2,600	2,800
Offers	Quintile 1	1,875	2,035	2,095	2,205	2,260	2,360
	Quintile 2	1,805	2,010	2,050	2,215	2,180	2,315
	Quintile 3	1,720	1,860	1,820	2,090	2,025	2,160
	Quintile 4	1,910	2,145	2,075	2,305	2,225	2,375
	Quintile 5	1,410	1,485	1,555	1,680	1,530	1,785
Offer rate	Quintile 1	54.1%	53.0%	50.9%	52.7%	52.0%	54.9%
	Quintile 2	54.1%	55.2%	51.4%	54.9%	54.4%	56.8%
	Quintile 3	56.3%	55.3%	52.5%	56.7%	56.3%	59.3%
	Quintile 4	57.7%	59.6%	55.2%	58.8%	58.6%	63.1%
	Quintile 5	58.2%	58.3%	56.2%	60.6%	58.8%	63.8%

P.21 Applicants (all ages) by ethnic group

Statistic	Ethnic group	2010	2011	2012	2013	2014	2015
June deadline applicants	Asian	455	545	665	745	675	770
	Black	375	455	605	670	605	645
	Mixed	305	310	360	360	380	415
	White	12,465	13,470	14,440	14,780	14,675	14,850
	Other	35	30	55	80	65	80
Placed June deadline applicants	Asian	50	50	75	55	65	75
	Black	35	60	50	50	50	70
	Mixed	50	60	65	50	60	55
	White	2,385	2,765	2,660	2,750	2,900	3,070
	Other	5	5	5	15	5	5
All placed applicants	Asian	80	85	95	80	85	90
	Black	70	90	70	70	65	90
	Mixed	70	85	80	60	70	75
	White	3,125	3,490	3,195	3,190	3,350	3,480
	Other	10	10	5	15	10	15

P.22 Applications (all ages) by ethnic group

Statistic	Ethnic group	2010	2011	2012	2013	2014	2015
June deadline applications	Asian	495	590	710	780	715	820
	Black	415	495	645	705	635	680
	Mixed	335	335	395	395	420	445
	White	14,280	15,515	16,275	16,605	16,480	16,530
	Other	40	35	60	90	70	85
Offers	Asian	275	275	350	375	335	375
	Black	150	160	185	225	165	200
	Mixed	190	195	225	225	250	250
	White	8,085	8,890	8,800	9,620	9,440	10,125
	Other	20	20	25	40	25	35
Offer rate	Asian	55.4%	46.2%	49.2%	48.3%	46.6%	45.7%
	Black	36.3%	31.8%	28.7%	31.6%	26.2%	29.4%
	Mixed	56.7%	58.0%	56.9%	56.9%	58.8%	56.5%
	White	56.6%	57.3%	54.1%	57.9%	57.3%	61.3%
	Other	50.0%	54.1%	44.1%	46.6%	38.0%	42.4%

Technical Notes and Definitions

UCAS undergraduate scheme

Adjustment

Adjustment allows applicants who have met and exceeded the terms of their conditional firm offer to seek and find a place at another provider whilst keeping their place at their original firm choice provider.

Clearing

Clearing is a route for applicants that are not placed and holding no offers to find a place on courses with vacancies.

Cycle year

The UCAS application cycle which runs from September to October the following year. For example the 2015 cycle runs from September 2014 through to October 2015.

End of cycle

The point in the cycle to which the numbers in this report refer, and the point at which the cycle is closed such that no more applications or offers can be made, and no more applicants can be placed. Numbers reported at the end of cycle exclude information on a small number of applicants who cancelled during the cycle.

Extra

Applicants who are unsuccessful in obtaining an offer or decline all offers may be eligible to apply through Extra, where they can apply to one further course at a time. Extra operates from 25 February until early July. It provides applicants who are eligible the possibility of obtaining an offer before exam results are published and Clearing starts.

June 30 deadline

The deadline for main scheme applications. Applicants who apply after this date will go directly into Clearing.

Record of Prior Acceptance (RPA)

RPA is an acceptance route used when a provider informs UCAS of applicants it has accepted outside of the normal application process (e.g. individuals who have applied directly to the provider).

Reporting groups

Ethnic group

High level grouping of ethnic origin as declared by the applicant: 'White', 'Black', 'Asian', 'Mixed', 'Other', 'Unknown'. Applicants who declare themselves as 'Unknown' ethnic origin are not reported in these tables, but are included in the associated csv data file.

POLAR3 quintile

Developed by HEFCE, POLAR3 classifies small areas across the UK into five groups according to their level of young participation in Higher Education. Each of these groups represents around 20 per cent of young people and is ranked from Quintile 1 (areas with the lowest young participation rates, considered as the most disadvantaged) to Quintile 5 (highest young participation rates, considered most advantaged). POLAR3 is based on the participation rates of young people between 2005 and 2009 who entered Higher Education between 2005-06 and 2010-11, therefore is most suitable for applicants aged 19 and under. These groups are assigned using the postcode declared by the applicant at the time of their application. If a UK postcode is invalid, considered unsafe for measurement or there is no link to Census geography possible then the applicant is not assigned to a quintile. Applicants with no POLAR3 quintile are not reported.

Sex

Sex as declared by the applicant.

SIMD quintile

Scottish index of multiple deprivation (SIMD) for 2012 identifies small area concentrations of multiple deprivation across all of Scotland, providing a relative measure of deprivation amongst 6505 small areas (data zones) based on 7 socio-economic domains. These small areas are classified into five groups ranked from Quintile 1 (considered the most deprived) to Quintile 5 (considered least deprived), with equal populations in each quintile. Quintiles are assigned using the postcode declared by the applicant, applicants declaring invalid postcodes are classified as 'Not assigned' and are not reported.

SIMD is only defined for applicants domiciled in Scotland, therefore any applicants domiciled outside of Scotland cannot be assigned to an SIMD quintile and so are not reported for this measure.

SIMD is only reported for providers in Scotland. Application and entry rates by SIMD are reported in the 2015 End of Cycle Report and the 2016 cycle January deadline application rate report.

Statistics reported in the tables

All placed applicants

The number of applicants placed for entry into higher education at the provider through one of their choices, including any choices made through Extra, or via Adjustment, Clearing or RPA.

All placed applicants per 10,000 population

The number of total UK domiciled 18 year old placed applicants for entry into higher education at the provider divided by the number of UK 18 year olds in the population, multiplied by 10,000. This gives the number of 18 year olds, for every 10,000 in the population, that were placed at the provider through one of their choices, including any choices made through Extra, or via Adjustment, Clearing or RPA. It is an alternative way of expressing the entry rate to a provider. By referencing the underlying population this statistic shows how the number of placed applicants is changing in relation to the available pool of potential applicants and so gives the chance that somebody from the group will be placed at a provider.

This statistic is only reported for 18 year olds.

Average offer rate

The offer rate that you might expect if the predicted grades and subject choice of applicants were the only factors that influenced whether an applicant was made an offer by the provider. The average offer rate is calculated by dividing applicants according to their specific combination of grades (for A levels the best three predicted grades are used, for BTECs, International Baccalaureate and Scottish Highers and Advanced Highers, predicted grades along with any grades already achieved upon applying are used) and subject choice. For each combination the number of main scheme offers is divided by the number of main scheme applications, to give an overall offer rate. This is then multiplied by the number of applications made by the group for which the average offer rate is being calculated (for example POLAR3 quintile 1), to give an average number of offers for that group. These average number of offers are then added together across all combinations of predicted grade and subject and divided by the number of main scheme applications from the group to give the average offer rate.

The average offer rate does not attempt to control for any other factors that may play a part in the decision to make an offer, such as the subject of the qualifications studied, their relevance to a course, or the grade in each subject; higher numbers of A levels being studied; the exact profile of grades predicted; personal statements; teacher references; interviews; or any other criteria (such as work experience or portfolios) that may be part of the admissions decision.

This statistic is only reported for 18 year olds.

Contribution of group to the average offer rate

The way in which the average offer rate is defined means that the pattern of application and offers of a group (for example POLAR3 quintile 1) will always contribute, in part, to the average offer rate for that group. When this contribution is large, the average offer rate will mainly reflect the patterns for the group, meaning that the value of the average offer rate will be similar to the offer rate, the percentage point difference statistic will be small, and any real difference between the offer rate and what might be expected given the predicted grades and subject choices of the applicants will be difficult to detect.

Values of the contribution of group to the average offer rate range between 0 and 1. The closer the value is to 1 the greater the contribution a group makes to its own average offer rate.

This statistic is only reported for 18 year olds.

Placed June deadline applicants

An applicant who has been placed for entry into higher education at the provider through a June deadline application.

Placed June deadline applicants per 10,000 population

The number of UK domiciled 18 year old placed June deadline applicants at the provider divided by the number of UK 18 year olds in the population, multiplied by 10,000. This gives the number of 18 year olds, for every 10,000 in the population, that were placed at the provider through one of their June deadline applications. It is an alternative way of expressing the entry rate to a provider, but for placed June deadline applicants only. By referencing the underlying population this statistic shows how the number of placed June deadline applicants is changing in relation to the available pool of potential 18 year old applicants and so gives the chance that somebody from the group will be placed at a provider through a June deadline application.

This statistic is only reported for 18 year olds.

June deadline applications

An application (or choice) to a course in higher education to the provider that is made by the June 30 deadline. Each applicant can make up to five choices this way. The number of June deadline applications does not include choices made through the following routes: Clearing, Extra, Adjustment and RPAs. Applications made to October deadline courses received after the October deadline are not included in these statistics.

June deadline applicants

The number of applicants that made at least one application to the provider by the June 30 deadline.

June deadline applicants per 10,000 population

The number of UK domiciled 18 year old June deadline applicants to the provider divided by the number of UK 18 year olds in the population, multiplied by 10,000. This gives the number of 18 year olds, for every 10,000 in the population, who applied by the June 30 deadline. It is equivalent to the application rate. By referencing the underlying population this statistic shows how the number of June deadline applicants is changing in relation to the available pool of potential 18 year old applicants and so gives the chance that somebody from the group will apply to a provider by the June 30 deadline.

This statistic is only reported for 18 year olds.

Offers

An offer is defined as a provider's decision in response to an application to offer a place to an applicant, often subject to the applicant satisfying academic and/or other criteria, via a June deadline application (i.e. does not cover choices made through the following routes: Clearing, Extra, Adjustment and RPAs).

Offer rate

The number of offers made divided by the number of June deadline applications. This gives the proportion of all June deadline applications to the provider that received an offer.

Percentage point difference between offer rate and average offer rate

The offer rate minus the average offer rate.

The percentage point difference can be compared to the expected range of statistical variation resulting from the calculation of the average offer rate using the Average Offer Rate Lookup Table. Where the value of the percentage point difference lies outside of this range, the percentage point difference may be considered to represent a real difference between the offer rate and the average offer rate.

Other definitions

Age

This analysis uses country-specific age definitions that align with the cut off points for school and college cohorts within the different administrations of the UK. For England and Wales, ages are defined on the 31 August, for Northern Ireland on the 1 July and for Scotland on the 28 February the following year. Defining ages in this way matches the assignment of children to school cohorts. For applicants outside of the UK a cohort cut off of 31 August has been used.

Provider

A higher education provider - a university or college.

UK domiciled

Declared area of permanent residence within England, Northern Ireland, Scotland and Wales. Applicants from the Channel Islands and Isle of Man are not included.