

G42 Glasgow Caledonian University

Cycle years: 2010 - 2015

Cycle Reference Point: End of Cycle

Applicant coverage: UK domiciled

Reporting groups: Sex, POLAR3, SIMD, ethnic group

Applicant statistics: June deadline applicants, placed June deadline applicants, all placed applicants, June deadline applicants per 10,000 population, placed June deadline applicants per 10,000 population, all placed applicants per 10,000 population

Application statistics: June deadline applications, offers, offer rate, average offer rate, percentage point difference between offer rate and average offer rate, contribution of group to the average offer rate

Non-disclosure controls: To avoid the disclosure of information about any individual the following measures are taken

- Applicants, placed applicants, applications and offers are rounded to the nearest 5.
- Applicants/placed applicants per 10,000 population figures are reported as 0 if the applicant/placed applicant figures are rounded to 0.
- All statistics related to the offer rate are not reported when the number of applications for a group is less than 10. The percentage point difference between the offer rate and the average offer rate is not reported when the number of applications for a group is less than 50.
- Offer rates are reported as 0% if there are fewer than 5 offers, and 100% if the number of offers is within 5 of the number of applications. When the offer rate is reported as 0% or 100%, it is reported in italics.

Contents:

18 year old applicants:	P.1
18 year old applications:	P.2
18 year old applicants by sex:	P.3
18 year old applications by sex:	P.4
18 year old applicants by POLAR3 quintile:	P.7
18 year old applications by POLAR3 quintile:	P.8
18 year old, Scotland domiciled applicants by SIMD quintile:	P.11
18 year old, Scotland domiciled applications by SIMD quintile:	P.12
18 year old applicants by ethnic group:	P.15
18 year old applications by ethnic group:	P.16
Applicants (all ages):	P.19
Applications (all ages):	P.20
Applicants (all ages) by sex:	P.21
Applications (all ages) by sex:	P.22
Applicants (all ages) by POLAR3 quintile:	P.23
Applications (all ages) by POLAR3 quintile:	P.24
Scotland domiciled applicants (all ages) by SIMD quintile:	P.25
Scotland domiciled applications (all ages) by SIMD quintile:	P.26
Applicants (all ages) by ethnic group:	P.27
Applications (all ages) by ethnic group:	P.28

P.1 18 year old applicants

Statistic	2010	2011	2012	2013	2014	2015
June deadline applicants	6,120	6,315	5,980	5,730	6,250	6,165
Placed June deadline applicants	1,325	1,435	1,260	1,305	1,360	1,035
All placed applicants	1,350	1,460	1,355	1,345	1,380	1,050
June deadline applicants per 10,000 population	77.5	82.0	77.3	75.3	83.0	80.5
Placed June deadline applicants per 10,000	16.8	18.6	16.3	17.1	18.0	13.5
All placed applicants per 10,000 population	17.1	19.0	17.5	17.7	18.3	13.7

P.2 18 year old applications

Statistic	2010	2011	2012	2013	2014	2015
June deadline applications	8,915	9,160	8,470	7,840	8,480	8,390
Offers	5,585	6,175	5,555	5,220	5,915	4,950
Offer rate	62.7%	67.4%	65.6%	66.6%	69.8%	59.0%

P.3 18 year old applicants by sex

Statistic	Sex	2010	2011	2012	2013	2014	2015
June deadline applicants	Men	2,095	2,245	2,050	2,015	2,250	2,185
	Women	4,025	4,070	3,935	3,715	4,000	3,980
Placed June deadline applicants	Men	485	555	490	505	505	405
	Women	840	880	775	800	850	630
All placed applicants	Men	500	565	525	520	515	410
	Women	850	895	830	825	865	640
June deadline applicants per 10,000 population	Men	52.1	57.0	51.7	51.7	58.1	55.7
	Women	103.8	108.1	104.3	100.2	109.3	106.5
Placed June deadline applicants per 10,000 population	Men	12.1	14.1	12.3	12.9	13.1	10.3
	Women	21.6	23.3	20.5	21.6	23.3	16.9
All placed applicants per 10,000 population	Men	12.4	14.4	13.2	13.3	13.3	10.4
	Women	22.0	23.7	22.0	22.2	23.6	17.1

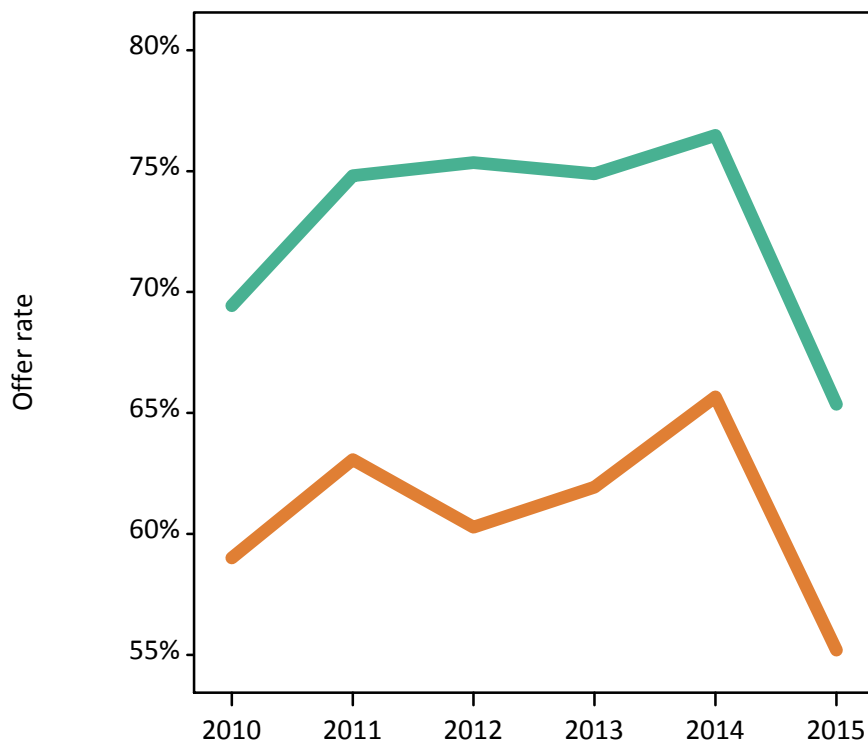
P.4 18 year old applications by sex

Statistic	Sex	2010	2011	2012	2013	2014	2015
June deadline applications	Men	3,110	3,380	2,985	2,805	3,210	3,125
	Women	5,805	5,780	5,485	5,040	5,270	5,265
Offers	Men	2,160	2,530	2,250	2,100	2,455	2,040
	Women	3,425	3,645	3,305	3,120	3,460	2,905
Offer rate	Men	69.4%	74.8%	75.4%	74.9%	76.5%	65.4%
	Women	59.0%	63.1%	60.3%	61.9%	65.7%	55.2%
Average offer rate	Men	71.0%	76.1%	75.7%	75.6%	78.3%	65.7%
	Women	58.2%	62.3%	60.1%	61.5%	64.6%	55.0%
Percentage point difference between offer rate and average offer rate	Men	-1.6	-1.2	-0.4	-0.8	-1.8	-0.4
	Women	0.8	0.7	0.2	0.4	1.1	0.2
Contribution of group to the average offer rate	Men	0.565	0.558	0.553	0.550	0.564	0.578
	Women	0.767	0.742	0.757	0.749	0.734	0.750

P.5 18 year old offer rate by sex

Note: The line for a group is not plotted when that group made fewer than 10 applications in any of the years from 2010-2015.

Men
Women



P.6 Percentage point difference between 18 year old offer rate and average offer rate by sex

Note: The line for a group is not plotted when that group made fewer than 50 applications in any of the years from 2010-2015.

Men
Women



P.7 18 year old applicants by POLAR3 quintile

Statistic	POLAR3 quintile	2010	2011	2012	2013	2014	2015
June deadline applicants	Quintile 1	320	295	295	310	365	380
	Quintile 2	805	795	740	740	835	835
	Quintile 3	1,070	1,110	1,100	1,025	1,105	1,070
	Quintile 4	1,525	1,560	1,455	1,410	1,535	1,535
	Quintile 5	2,390	2,550	2,385	2,240	2,390	2,335
Placed June deadline applicants	Quintile 1	55	60	55	60	60	40
	Quintile 2	160	180	165	145	180	130
	Quintile 3	215	225	220	215	250	160
	Quintile 4	310	315	280	310	335	245
	Quintile 5	580	655	545	565	525	460
All placed applicants	Quintile 1	55	60	55	65	60	45
	Quintile 2	165	180	180	150	185	130
	Quintile 3	225	230	240	220	255	160
	Quintile 4	315	320	295	320	335	245
	Quintile 5	590	670	585	585	540	465
June deadline applicants per 10,000 population	Quintile 1	21.8	20.6	20.7	22.2	26.4	27.1
	Quintile 2	52.4	53.0	49.2	50.1	57.1	56.1
	Quintile 3	67.2	72.0	71.3	67.3	73.5	69.7
	Quintile 4	95.6	99.6	91.7	90.2	99.6	98.1
	Quintile 5	141.0	153.9	141.9	135.5	146.7	139.6
Placed June deadline applicants per 10,000 population	Quintile 1	3.6	4.1	3.9	4.4	4.3	2.9
	Quintile 2	10.5	11.9	10.9	10.0	12.4	8.7
	Quintile 3	13.6	14.5	14.2	14.1	16.7	10.5
	Quintile 4	19.5	20.2	17.5	19.9	21.8	15.6
	Quintile 5	34.2	39.7	32.3	34.3	32.3	27.5
All placed applicants per 10,000 population	Quintile 1	3.7	4.1	4.0	4.7	4.4	3.1
	Quintile 2	10.7	12.0	12.1	10.2	12.6	8.8
	Quintile 3	14.1	14.8	15.5	14.6	16.9	10.5
	Quintile 4	19.9	20.6	18.6	20.6	21.9	15.7
	Quintile 5	34.7	40.5	34.7	35.3	33.0	27.9

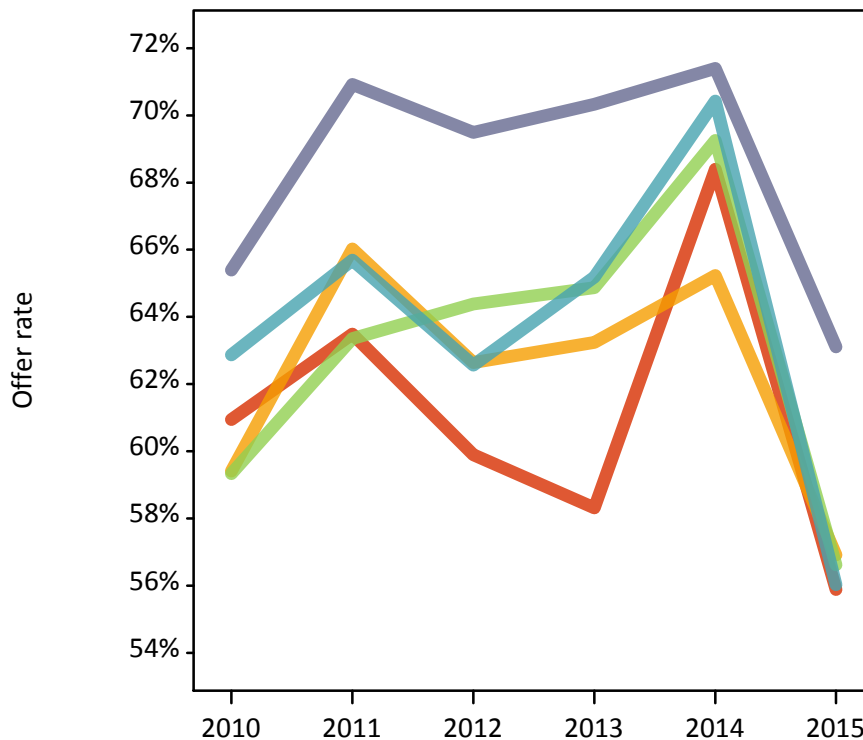
P.8 18 year old applications by POLAR3 quintile

Statistic	POLAR3 quintile	2010	2011	2012	2013	2014	2015
June deadline applications	Quintile 1	445	420	400	405	500	475
	Quintile 2	1,190	1,135	1,050	1,025	1,140	1,100
	Quintile 3	1,600	1,590	1,550	1,395	1,495	1,480
	Quintile 4	2,140	2,220	2,020	1,915	2,085	2,105
	Quintile 5	3,525	3,790	3,435	3,100	3,240	3,215
Offers	Quintile 1	270	265	240	235	340	265
	Quintile 2	705	750	660	645	745	625
	Quintile 3	950	1,010	1,000	905	1,035	840
	Quintile 4	1,345	1,455	1,265	1,245	1,465	1,180
	Quintile 5	2,305	2,690	2,385	2,180	2,315	2,030
Offer rate	Quintile 1	60.9%	63.5%	59.9%	58.3%	68.4%	55.9%
	Quintile 2	59.4%	66.0%	62.6%	63.2%	65.2%	56.9%
	Quintile 3	59.3%	63.4%	64.4%	64.9%	69.3%	56.6%
	Quintile 4	62.9%	65.7%	62.6%	65.2%	70.4%	56.0%
	Quintile 5	65.4%	70.9%	69.5%	70.3%	71.4%	63.1%
Average offer rate	Quintile 1	62.0%	63.4%	60.6%	60.4%	67.2%	56.4%
	Quintile 2	59.5%	65.0%	64.4%	64.1%	66.1%	58.9%
	Quintile 3	61.5%	64.9%	64.5%	65.8%	69.3%	57.3%
	Quintile 4	62.4%	66.5%	62.4%	65.3%	70.0%	57.7%
	Quintile 5	64.5%	70.1%	68.9%	69.3%	71.6%	61.0%
Percentage point difference between offer rate and average offer rate	Quintile 1	-1.0	0.1	-0.7	-2.1	1.2	-0.5
	Quintile 2	-0.1	1.0	-1.8	-0.8	-0.9	-2.0
	Quintile 3	-2.2	-1.5	-0.1	-1.0	-0.0	-0.7
	Quintile 4	0.5	-0.8	0.1	-0.1	0.5	-1.7
	Quintile 5	0.9	0.8	0.6	1.0	-0.2	2.2
Contribution of group to the average offer rate	Quintile 1	0.127	0.113	0.105	0.120	0.113	0.114
	Quintile 2	0.177	0.161	0.160	0.174	0.171	0.173
	Quintile 3	0.216	0.211	0.220	0.209	0.208	0.216
	Quintile 4	0.274	0.277	0.277	0.278	0.278	0.287
	Quintile 5	0.428	0.450	0.440	0.429	0.411	0.421

P.9 18 year old offer rate by POLAR3 quintile

Note: The line for a group is not plotted when that group made fewer than 10 applications in any of the years from 2010-2015.

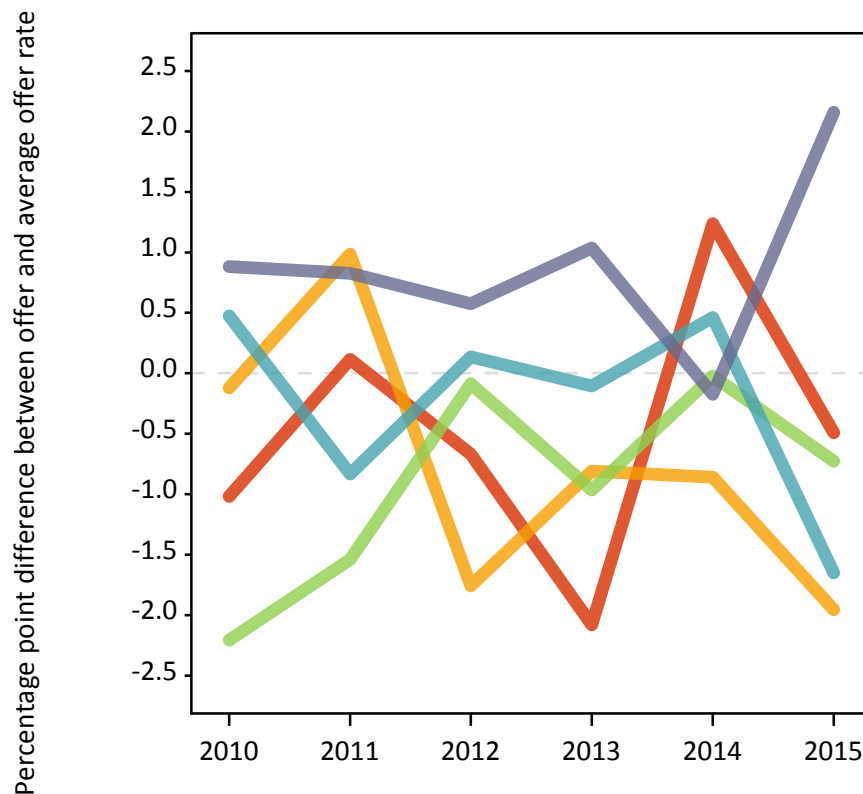
- Quintile 1
- Quintile 2
- Quintile 3
- Quintile 4
- Quintile 5



P.10 Percentage point difference between 18 year old offer rate and average offer rate by POLAR3 quintile

Note: The line for a group is not plotted when that group made fewer than 50 applications in any of the years from 2010-2015.

- Quintile 1
- Quintile 2
- Quintile 3
- Quintile 4
- Quintile 5



P.11 18 year old, Scotland domiciled applicants by SIMD quintile

Statistic	SIMD quintile	2010	2011	2012	2013	2014	2015
June deadline applicants	Quintile 1	690	725	720	665	885	800
	Quintile 2	940	935	865	840	895	915
	Quintile 3	1,050	1,100	1,075	1,015	1,050	1,075
	Quintile 4	1,225	1,255	1,165	1,140	1,205	1,230
	Quintile 5	1,470	1,590	1,510	1,330	1,495	1,450
Placed June deadline applicants	Quintile 1	145	175	175	165	170	115
	Quintile 2	230	205	180	185	225	160
	Quintile 3	225	265	240	255	285	195
	Quintile 4	295	300	250	310	265	245
	Quintile 5	365	435	375	360	375	290
All placed applicants	Quintile 1	150	175	190	170	175	120
	Quintile 2	235	205	195	190	230	160
	Quintile 3	230	270	255	265	285	195
	Quintile 4	295	305	275	315	270	245
	Quintile 5	375	445	395	375	380	295
June deadline applicants per 10,000 population	Quintile 1	509.1	543.1	552.6	506.4	675.9	625.6
	Quintile 2	755.6	780.1	735.9	718.8	770.3	807.0
	Quintile 3	844.6	897.7	890.5	851.3	890.7	926.1
	Quintile 4	977.9	1,005.5	936.5	922.5	975.4	1,003.3
	Quintile 5	1,136.4	1,248.7	1,199.6	1,068.0	1,206.6	1,187.4
Placed June deadline applicants per 10,000 population	Quintile 1	108.2	131.1	134.7	124.3	131.2	90.2
	Quintile 2	183.5	169.0	151.3	157.1	193.9	141.0
	Quintile 3	182.8	216.7	200.3	214.9	239.6	169.0
	Quintile 4	234.3	242.0	200.3	248.8	215.8	198.2
	Quintile 5	282.9	340.6	296.1	290.5	302.2	239.1
All placed applicants per 10,000 population	Quintile 1	111.1	131.9	143.9	128.9	132.7	92.5
	Quintile 2	188.3	172.3	166.5	160.5	198.2	141.0
	Quintile 3	186.8	221.6	210.2	222.5	241.3	169.0
	Quintile 4	237.5	246.0	221.3	255.3	218.2	201.5
	Quintile 5	288.3	347.7	314.4	299.3	307.9	240.8

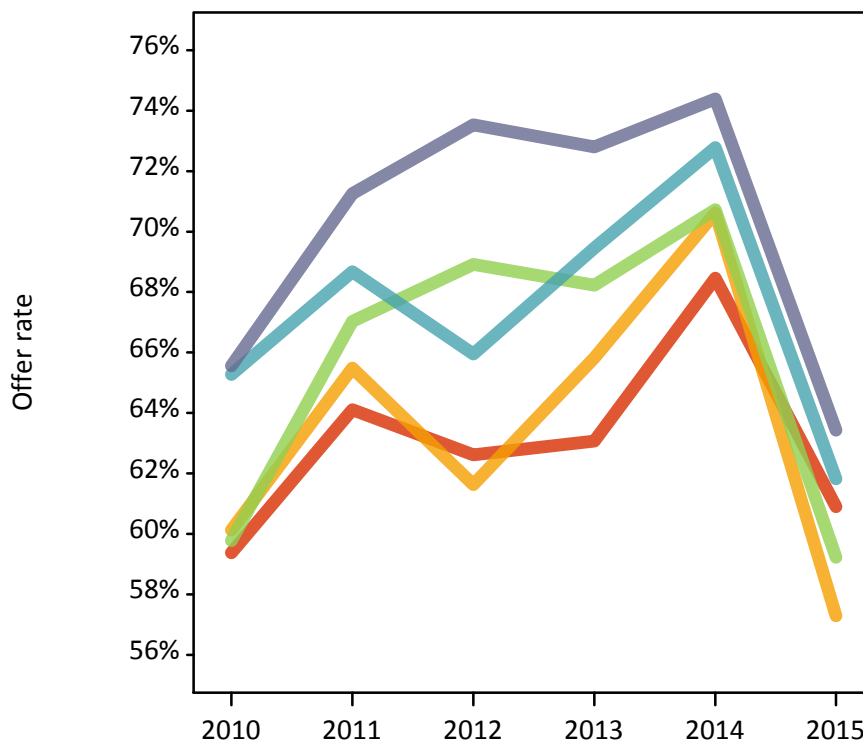
P.12 18 year old, Scotland domiciled applications by SIMD quintile

Statistic	SIMD quintile	2010	2011	2012	2013	2014	2015
June deadline applications	Quintile 1	1,080	1,110	1,080	985	1,280	1,090
	Quintile 2	1,475	1,415	1,265	1,190	1,255	1,295
	Quintile 3	1,590	1,630	1,585	1,430	1,455	1,495
	Quintile 4	1,765	1,830	1,640	1,575	1,655	1,735
	Quintile 5	2,220	2,420	2,225	1,890	2,085	2,035
Offers	Quintile 1	640	710	675	620	875	665
	Quintile 2	890	925	780	780	885	745
	Quintile 3	950	1,095	1,090	975	1,030	885
	Quintile 4	1,150	1,255	1,080	1,095	1,205	1,070
	Quintile 5	1,455	1,725	1,635	1,375	1,550	1,290
Offer rate	Quintile 1	59.4%	64.1%	62.6%	63.1%	68.5%	60.9%
	Quintile 2	60.1%	65.5%	61.6%	65.8%	70.6%	57.3%
	Quintile 3	59.8%	67.0%	68.9%	68.2%	70.7%	59.2%
	Quintile 4	65.3%	68.7%	66.0%	69.5%	72.8%	61.8%
	Quintile 5	65.6%	71.3%	73.5%	72.8%	74.4%	63.4%
Average offer rate	Quintile 1	61.0%	65.2%	63.9%	64.8%	70.1%	61.8%
	Quintile 2	61.8%	66.5%	64.9%	67.8%	70.8%	59.6%
	Quintile 3	61.9%	67.2%	67.7%	67.9%	70.7%	59.9%
	Quintile 4	62.8%	68.2%	66.7%	68.5%	72.5%	60.4%
	Quintile 5	64.1%	70.4%	71.4%	71.7%	73.5%	62.2%
Percentage point difference between offer rate and average offer rate	Quintile 1	-1.6	-1.1	-1.2	-1.7	-1.7	-0.9
	Quintile 2	-1.7	-1.0	-3.2	-2.0	-0.2	-2.3
	Quintile 3	-2.1	-0.2	1.2	0.3	0.0	-0.6
	Quintile 4	2.5	0.5	-0.7	1.0	0.3	1.4
	Quintile 5	1.5	0.8	2.1	1.1	0.9	1.3
Contribution of group to the average offer rate	Quintile 1	0.152	0.153	0.161	0.157	0.190	0.165
	Quintile 2	0.194	0.183	0.180	0.185	0.178	0.192
	Quintile 3	0.210	0.207	0.220	0.217	0.203	0.214
	Quintile 4	0.232	0.232	0.222	0.237	0.226	0.242
	Quintile 5	0.293	0.308	0.312	0.289	0.289	0.287

P.13 18 year old, Scotland domiciled offer rate by SIMD quintile

Note: The line for a group is not plotted when that group made fewer than 10 applications in any of the years from 2010-2015.

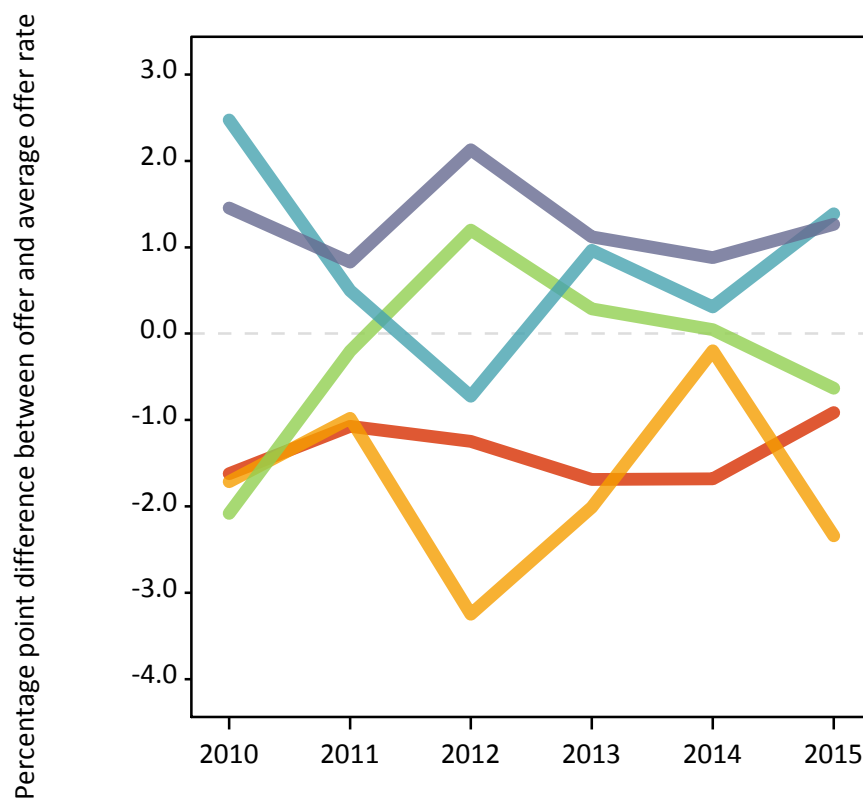
- Quintile 1
- Quintile 2
- Quintile 3
- Quintile 4
- Quintile 5



P.14 Percentage point difference between 18 year old, Scotland domiciled offer rate and average offer rate by SIMD quintile

Note: The line for a group is not plotted when that group made fewer than 50 applications in any of the years from 2010-2015.

- Quintile 1
- Quintile 2
- Quintile 3
- Quintile 4
- Quintile 5



P.15 18 year old applicants by ethnic group

Statistic	Ethnic group	2010	2011	2012	2013	2014	2015
June deadline applicants	Asian	285	310	315	320	375	380
	Black	45	45	40	40	55	65
	Mixed	60	85	65	85	80	65
	White	5,705	5,860	5,540	5,250	5,710	5,605
	Other	5	10	15	20	20	30
Placed June deadline applicants	Asian	40	70	70	75	95	70
	Black	5	5	5	5	10	5
	Mixed	10	20	5	15	15	10
	White	1,260	1,340	1,175	1,200	1,235	945
	Other	0	0	5	5	0	5
All placed applicants	Asian	45	70	80	75	95	70
	Black	5	5	5	5	10	5
	Mixed	10	20	10	15	15	10
	White	1,280	1,365	1,255	1,240	1,255	955
	Other	0	0	5	5	0	5
June deadline applicants per 10,000 population	Asian	45.9	48.9	48.5	48.8	55.0	53.6
	Black	16.4	15.7	13.8	14.1	18.5	21.1
	Mixed	25.5	34.3	24.2	31.1	27.1	21.7
	White	85.1	90.5	85.8	83.4	92.6	90.0
	Other	5.2	12.3	14.7	24.3	23.6	33.2
Placed June deadline applicants per 10,000 population	Asian	6.6	10.8	11.1	11.2	13.7	9.9
	Black	1.9	1.5	2.1	2.4	3.3	0.9
	Mixed	5.2	7.4	2.3	5.5	5.6	3.2
	White	18.8	20.7	18.2	19.1	20.1	15.2
	Other	0.0	0.0	3.4	3.3	0.0	5.2
All placed applicants per 10,000 population	Asian	7.1	10.8	12.5	11.7	14.2	10.0
	Black	2.3	1.5	2.1	2.4	3.3	1.3
	Mixed	5.2	7.4	3.1	5.5	5.6	3.2
	White	19.1	21.1	19.5	19.7	20.3	15.3
	Other	0.0	0.0	3.4	3.3	0.0	5.2

P.16 18 year old applications by ethnic group

Statistic	Ethnic group	2010	2011	2012	2013	2014	2015
June deadline applications	Asian	460	510	505	435	550	555
	Black	45	65	50	50	75	80
	Mixed	90	115	90	100	100	90
	White	8,285	8,450	7,795	7,200	7,710	7,600
	Other	5	10	20	30	30	45
Offers	Asian	300	375	335	295	415	335
	Black	30	35	30	35	45	40
	Mixed	60	85	55	65	65	60
	White	5,170	5,655	5,115	4,800	5,355	4,470
	Other	5	10	15	15	25	25
Offer rate	Asian	65.4%	74.0%	66.9%	67.0%	75.5%	60.5%
	Black	66.0%	58.7%	60.0%	63.5%	62.2%	48.8%
	Mixed	68.2%	75.4%	58.9%	65.3%	63.7%	65.9%
	White	62.4%	66.9%	65.7%	66.7%	69.4%	58.8%
	Other	N/A	100.0%	75.0%	55.2%	83.9%	59.1%
Average offer rate	Asian	71.7%	76.5%	69.2%	72.0%	74.3%	63.6%
	Black	64.6%	61.7%	67.0%	72.6%	65.3%	50.9%
	Mixed	61.9%	70.0%	60.4%	67.8%	66.9%	61.9%
	White	62.1%	66.8%	65.4%	66.2%	69.5%	58.6%
	Other	N/A	79.0%	72.3%	69.5%	77.7%	65.9%
Percentage point difference between offer rate and average offer rate	Asian	-6.2	-2.4	-2.4	-4.9	1.2	-3.1
	Black	N/A	-3.0	-7.0	-9.2	-3.1	-2.1
	Mixed	6.3	5.4	-1.6	-2.5	-3.1	4.0
	White	0.3	0.1	0.3	0.5	-0.0	0.2
	Other	N/A	N/A	N/A	N/A	N/A	N/A
Contribution of group to the average offer rate	Asian	0.178	0.163	0.154	0.170	0.190	0.192
	Black	0.140	0.115	0.070	0.116	0.120	0.095
	Mixed	0.050	0.060	0.103	0.106	0.063	0.058
	White	0.938	0.931	0.928	0.928	0.922	0.919
	Other	N/A	0.008	0.043	0.133	0.080	0.095

P.17 18 year old offer rate by ethnic group

Note: The line for a group is not plotted when that group made fewer than 10 applications in any of the years from 2010-2015.

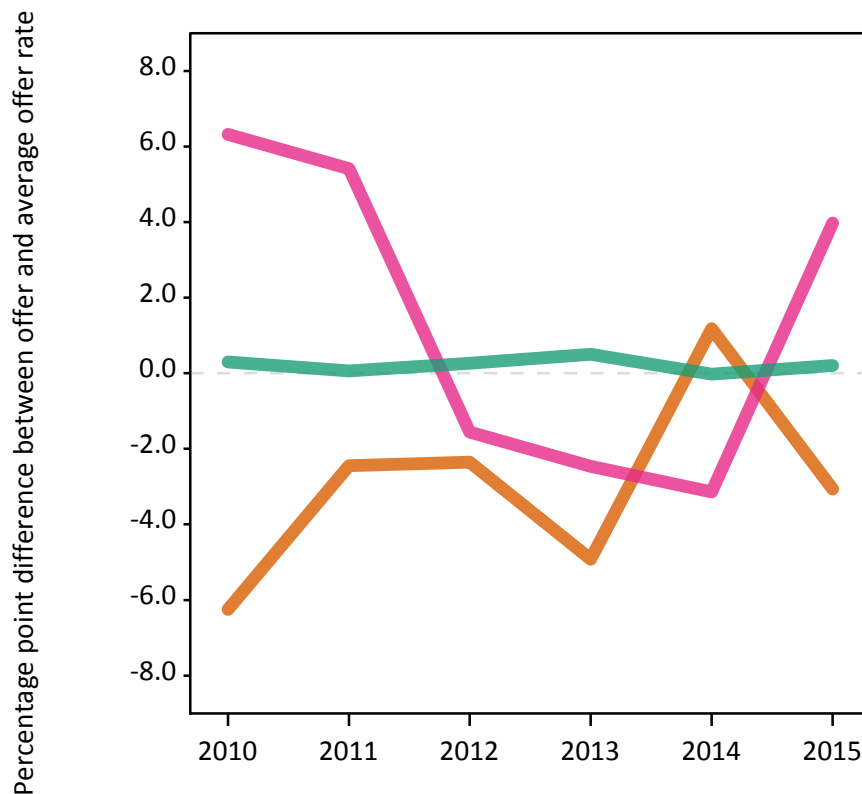
- Asian
- Black
- Mixed
- White
- Other



P.18 Percentage point difference between 18 year old offer rate and average offer rate by ethnic group

Note: The line for a group is not plotted when that group made fewer than 50 applications in any of the years from 2010-2015.

- Asian
- Black
- Mixed
- White
- Other



P.19 Applicants (all ages)

Statistic	2010	2011	2012	2013	2014	2015
June deadline applicants	14,005	14,515	13,810	14,255	15,390	15,320
Placed June deadline applicants	3,000	3,245	3,080	3,305	3,415	2,980
All placed applicants	3,120	3,300	3,305	3,465	3,500	3,010

P.20 Applications (all ages)

Statistic	2010	2011	2012	2013	2014	2015
June deadline applications	19,980	20,500	19,425	19,745	21,495	21,800
Offers	9,530	10,790	10,410	10,525	11,455	9,945
Offer rate	47.7%	52.6%	53.6%	53.3%	53.3%	45.6%

P.21 Applicants (all ages) by sex

Statistic	Sex	2010	2011	2012	2013	2014	2015
June deadline applicants	Men	4,955	5,240	4,965	5,320	5,660	5,595
	Women	9,050	9,275	8,845	8,935	9,730	9,725
Placed June deadline applicants	Men	1,085	1,265	1,185	1,295	1,295	1,160
	Women	1,915	1,980	1,895	2,015	2,120	1,820
All placed applicants	Men	1,125	1,290	1,265	1,360	1,345	1,165
	Women	1,995	2,015	2,040	2,105	2,155	1,840

P.22 Applications (all ages) by sex

Statistic	Sex	2010	2011	2012	2013	2014	2015
June deadline applications	Men	7,225	7,665	7,260	7,625	8,280	8,460
	Women	12,755	12,830	12,165	12,120	13,215	13,340
Offers	Men	3,835	4,505	4,370	4,525	4,850	4,280
	Women	5,695	6,285	6,040	6,000	6,605	5,665
Offer rate	Men	53.1%	58.7%	60.2%	59.3%	58.6%	50.6%
	Women	44.7%	49.0%	49.7%	49.5%	50.0%	42.5%

P.23 Applicants (all ages) by POLAR3 quintile

Statistic	POLAR3 quintile	2010	2011	2012	2013	2014	2015
June deadline applicants	Quintile 1	1,010	1,030	960	1,050	1,215	1,260
	Quintile 2	2,180	2,150	2,080	2,105	2,395	2,420
	Quintile 3	2,490	2,630	2,530	2,630	2,835	2,855
	Quintile 4	3,270	3,350	3,240	3,340	3,665	3,530
	Quintile 5	5,015	5,325	4,955	5,090	5,250	5,225
Placed June deadline applicants	Quintile 1	185	220	220	255	220	225
	Quintile 2	450	495	490	500	550	455
	Quintile 3	500	540	545	560	630	505
	Quintile 4	680	705	650	715	830	655
	Quintile 5	1,175	1,280	1,175	1,265	1,185	1,130
All placed applicants	Quintile 1	195	220	230	265	225	230
	Quintile 2	475	505	525	525	565	465
	Quintile 3	520	550	580	585	645	510
	Quintile 4	700	715	695	755	840	660
	Quintile 5	1,225	1,305	1,270	1,320	1,215	1,140

P.24 Applications (all ages) by POLAR3 quintile

Statistic	POLAR3 quintile	2010	2011	2012	2013	2014	2015
June deadline applications	Quintile 1	1,370	1,415	1,335	1,405	1,690	1,765
	Quintile 2	3,140	3,015	2,950	2,970	3,400	3,440
	Quintile 3	3,520	3,685	3,530	3,585	3,910	4,010
	Quintile 4	4,560	4,635	4,510	4,580	5,070	5,020
	Quintile 5	7,340	7,715	7,050	7,135	7,390	7,520
Offers	Quintile 1	580	655	645	675	795	710
	Quintile 2	1,390	1,490	1,470	1,535	1,700	1,475
	Quintile 3	1,620	1,825	1,880	1,815	2,055	1,755
	Quintile 4	2,200	2,440	2,305	2,405	2,750	2,295
	Quintile 5	3,710	4,355	4,085	4,060	4,135	3,690
Offer rate	Quintile 1	42.5%	46.4%	48.4%	48.2%	47.0%	40.3%
	Quintile 2	44.2%	49.5%	49.8%	51.7%	50.1%	42.9%
	Quintile 3	46.1%	49.6%	53.2%	50.6%	52.6%	43.8%
	Quintile 4	48.3%	52.6%	51.1%	52.5%	54.3%	45.7%
	Quintile 5	50.5%	56.5%	58.0%	56.9%	55.9%	49.0%

P.25 Scotland domiciled applicants (all ages) by SIMD quintile

Statistic	SIMD quintile	2010	2011	2012	2013	2014	2015
June deadline applicants	Quintile 1	2,610	2,635	2,600	2,640	3,110	3,125
	Quintile 2	2,355	2,410	2,340	2,425	2,650	2,670
	Quintile 3	2,370	2,500	2,445	2,500	2,625	2,645
	Quintile 4	2,485	2,535	2,360	2,500	2,610	2,635
	Quintile 5	2,750	2,955	2,845	2,720	2,900	2,825
Placed June deadline applicants	Quintile 1	600	650	695	755	720	660
	Quintile 2	520	555	550	560	670	560
	Quintile 3	525	585	535	600	625	545
	Quintile 4	560	570	515	615	610	545
	Quintile 5	675	770	710	690	700	595
All placed applicants	Quintile 1	625	660	735	795	745	670
	Quintile 2	545	560	590	585	685	565
	Quintile 3	545	595	570	630	635	550
	Quintile 4	585	580	565	640	625	550
	Quintile 5	695	785	760	715	720	600

P.26 Scotland domiciled applications (all ages) by SIMD quintile

Statistic	SIMD quintile	2010	2011	2012	2013	2014	2015
June deadline applications	Quintile 1	3,830	3,835	3,840	3,855	4,575	4,720
	Quintile 2	3,475	3,530	3,390	3,485	3,865	3,950
	Quintile 3	3,495	3,610	3,480	3,555	3,700	3,795
	Quintile 4	3,545	3,545	3,290	3,430	3,645	3,810
	Quintile 5	4,090	4,375	4,120	3,850	4,125	4,030
Offers	Quintile 1	1,645	1,810	1,935	1,970	2,230	1,980
	Quintile 2	1,560	1,790	1,715	1,785	2,010	1,745
	Quintile 3	1,645	1,860	1,925	1,895	2,000	1,770
	Quintile 4	1,780	1,980	1,830	1,970	2,100	1,880
	Quintile 5	2,155	2,625	2,560	2,295	2,500	2,075
Offer rate	Quintile 1	42.9%	47.2%	50.4%	51.1%	48.7%	41.9%
	Quintile 2	45.0%	50.7%	50.7%	51.2%	52.1%	44.1%
	Quintile 3	47.2%	51.5%	55.4%	53.4%	54.1%	46.7%
	Quintile 4	50.2%	55.9%	55.7%	57.4%	57.6%	49.3%
	Quintile 5	52.7%	60.0%	62.2%	59.6%	60.7%	51.5%

P.27 Applicants (all ages) by ethnic group

Statistic	Ethnic group	2010	2011	2012	2013	2014	2015
June deadline applicants	Asian	770	855	805	905	955	1,030
	Black	375	400	410	395	430	495
	Mixed	160	195	180	215	200	210
	White	12,610	12,980	12,310	12,615	13,670	13,395
	Other	35	40	55	75	85	110
Placed June deadline applicants	Asian	130	180	165	195	210	170
	Black	50	55	85	70	55	55
	Mixed	30	30	30	35	40	35
	White	2,775	2,970	2,780	2,990	3,085	2,685
	Other	5	5	15	10	10	20
All placed applicants	Asian	140	180	175	205	220	170
	Black	55	55	90	75	55	60
	Mixed	30	30	30	35	40	35
	White	2,845	3,015	2,970	3,115	3,155	2,710
	Other	10	5	15	15	15	20

P.28 Applications (all ages) by ethnic group

Statistic	Ethnic group	2010	2011	2012	2013	2014	2015
June deadline applications	Asian	1,220	1,335	1,255	1,315	1,465	1,605
	Black	480	500	560	510	575	685
	Mixed	225	260	230	270	270	285
	White	17,930	18,280	17,240	17,465	18,980	18,945
	Other	55	50	70	95	130	165
Offers	Asian	590	715	655	705	840	685
	Black	160	170	195	175	190	170
	Mixed	100	135	125	145	140	120
	White	8,625	9,715	9,370	9,420	10,185	8,840
	Other	20	25	30	45	65	70
Offer rate	Asian	48.5%	53.5%	52.2%	53.6%	57.4%	42.8%
	Black	33.5%	34.3%	34.7%	34.4%	33.0%	25.1%
	Mixed	43.6%	52.7%	55.2%	53.9%	51.1%	41.6%
	White	48.1%	53.1%	54.4%	53.9%	53.7%	46.7%
	Other	35.7%	47.1%	46.4%	46.8%	51.5%	41.7%

Technical Notes and Definitions

UCAS undergraduate scheme

Adjustment

Adjustment allows applicants who have met and exceeded the terms of their conditional firm offer to seek and find a place at another provider whilst keeping their place at their original firm choice provider.

Clearing

Clearing is a route for applicants that are not placed and holding no offers to find a place on courses with vacancies.

Cycle year

The UCAS application cycle which runs from September to October the following year. For example the 2015 cycle runs from September 2014 through to October 2015.

End of cycle

The point in the cycle to which the numbers in this report refer, and the point at which the cycle is closed such that no more applications or offers can be made, and no more applicants can be placed. Numbers reported at the end of cycle exclude information on a small number of applicants who cancelled during the cycle.

Extra

Applicants who are unsuccessful in obtaining an offer or decline all offers may be eligible to apply through Extra, where they can apply to one further course at a time. Extra operates from 25 February until early July. It provides applicants who are eligible the possibility of obtaining an offer before exam results are published and Clearing starts.

June 30 deadline

The deadline for main scheme applications. Applicants who apply after this date will go directly into Clearing.

Record of Prior Acceptance (RPA)

RPA is an acceptance route used when a provider informs UCAS of applicants it has accepted outside of the normal application process (e.g. individuals who have applied directly to the provider).

Reporting groups

Ethnic group

High level grouping of ethnic origin as declared by the applicant: 'White', 'Black', 'Asian', 'Mixed', 'Other', 'Unknown'. Applicants who declare themselves as 'Unknown' ethnic origin are not reported in these tables, but are included in the associated csv data file.

POLAR3 quintile

Developed by HEFCE, POLAR3 classifies small areas across the UK into five groups according to their level of young participation in Higher Education. Each of these groups represents around 20 per cent of young people and is ranked from Quintile 1 (areas with the lowest young participation rates, considered as the most disadvantaged) to Quintile 5 (highest young participation rates, considered most advantaged). POLAR3 is based on the participation rates of young people between 2005 and 2009 who entered Higher Education between 2005-06 and 2010-11, therefore is most suitable for applicants aged 19 and under. These groups are assigned using the postcode declared by the applicant at the time of their application. If a UK postcode is invalid, considered unsafe for measurement or there is no link to Census geography possible then the applicant is not assigned to a quintile. Applicants with no POLAR3 quintile are not reported.

Sex

Sex as declared by the applicant.

SIMD quintile

Scottish index of multiple deprivation (SIMD) for 2012 identifies small area concentrations of multiple deprivation across all of Scotland, providing a relative measure of deprivation amongst 6505 small areas (data zones) based on 7 socio-economic domains. These small areas are classified into five groups ranked from Quintile 1 (considered the most deprived) to Quintile 5 (considered least deprived), with equal populations in each quintile. Quintiles are assigned using the postcode declared by the applicant, applicants declaring invalid postcodes are classified as 'Not assigned' and are not reported.

SIMD is only defined for applicants domiciled in Scotland, therefore any applicants domiciled outside of Scotland cannot be assigned to an SIMD quintile and so are not reported for this measure.

SIMD is only reported for providers in Scotland. Application and entry rates by SIMD are reported in the 2015 End of Cycle Report and the 2016 cycle January deadline application rate report.

Statistics reported in the tables

All placed applicants

The number of applicants placed for entry into higher education at the provider through one of their choices, including any choices made through Extra, or via Adjustment, Clearing or RPA.

All placed applicants per 10,000 population

The number of total UK domiciled 18 year old placed applicants for entry into higher education at the provider divided by the number of UK 18 year olds in the population, multiplied by 10,000. This gives the number of 18 year olds, for every 10,000 in the population, that were placed at the provider through one of their choices, including any choices made through Extra, or via Adjustment, Clearing or RPA. It is an alternative way of expressing the entry rate to a provider. By referencing the underlying population this statistic shows how the number of placed applicants is changing in relation to the available pool of potential applicants and so gives the chance that somebody from the group will be placed at a provider.

This statistic is only reported for 18 year olds.

Average offer rate

The offer rate that you might expect if the predicted grades and subject choice of applicants were the only factors that influenced whether an applicant was made an offer by the provider. The average offer rate is calculated by dividing applicants according to their specific combination of grades (for A levels the best three predicted grades are used, for BTECs, International Baccalaureate and Scottish Highers and Advanced Highers, predicted grades along with any grades already achieved upon applying are used) and subject choice. For each combination the number of main scheme offers is divided by the number of main scheme applications, to give an overall offer rate. This is then multiplied by the number of applications made by the group for which the average offer rate is being calculated (for example POLAR3 quintile 1), to give an average number of offers for that group. These average number of offers are then added together across all combinations of predicted grade and subject and divided by the number of main scheme applications from the group to give the average offer rate.

The average offer rate does not attempt to control for any other factors that may play a part in the decision to make an offer, such as the subject of the qualifications studied, their relevance to a course, or the grade in each subject; higher numbers of A levels being studied; the exact profile of grades predicted; personal statements; teacher references; interviews; or any other criteria (such as work experience or portfolios) that may be part of the admissions decision.

This statistic is only reported for 18 year olds.

Contribution of group to the average offer rate

The way in which the average offer rate is defined means that the pattern of application and offers of a group (for example POLAR3 quintile 1) will always contribute, in part, to the average offer rate for that group. When this contribution is large, the average offer rate will mainly reflect the patterns for the group, meaning that the value of the average offer rate will be similar to the offer rate, the percentage point difference statistic will be small, and any real difference between the offer rate and what might be expected given the predicted grades and subject choices of the applicants will be difficult to detect.

Values of the contribution of group to the average offer rate range between 0 and 1. The closer the value is to 1 the greater the contribution a group makes to its own average offer rate.

This statistic is only reported for 18 year olds.

Placed June deadline applicants

An applicant who has been placed for entry into higher education at the provider through a June deadline application.

Placed June deadline applicants per 10,000 population

The number of UK domiciled 18 year old placed June deadline applicants at the provider divided by the number of UK 18 year olds in the population, multiplied by 10,000. This gives the number of 18 year olds, for every 10,000 in the population, that were placed at the provider through one of their June deadline applications. It is an alternative way of expressing the entry rate to a provider, but for placed June deadline applicants only. By referencing the underlying population this statistic shows how the number of placed June deadline applicants is changing in relation to the available pool of potential 18 year old applicants and so gives the chance that somebody from the group will be placed at a provider through a June deadline application.

This statistic is only reported for 18 year olds.

June deadline applications

An application (or choice) to a course in higher education to the provider that is made by the June 30 deadline. Each applicant can make up to five choices this way. The number of June deadline applications does not include choices made through the following routes: Clearing, Extra, Adjustment and RPAs. Applications made to October deadline courses received after the October deadline are not included in these statistics.

June deadline applicants

The number of applicants that made at least one application to the provider by the June 30 deadline.

June deadline applicants per 10,000 population

The number of UK domiciled 18 year old June deadline applicants to the provider divided by the number of UK 18 year olds in the population, multiplied by 10,000. This gives the number of 18 year olds, for every 10,000 in the population, who applied by the June 30 deadline. It is equivalent to the application rate. By referencing the underlying population this statistic shows how the number of June deadline applicants is changing in relation to the available pool of potential 18 year old applicants and so gives the chance that somebody from the group will apply to a provider by the June 30 deadline.

This statistic is only reported for 18 year olds.

Offers

An offer is defined as a provider's decision in response to an application to offer a place to an applicant, often subject to the applicant satisfying academic and/or other criteria, via a June deadline application (i.e. does not cover choices made through the following routes: Clearing, Extra, Adjustment and RPAs).

Offer rate

The number of offers made divided by the number of June deadline applications. This gives the proportion of all June deadline applications to the provider that received an offer.

Percentage point difference between offer rate and average offer rate

The offer rate minus the average offer rate.

The percentage point difference can be compared to the expected range of statistical variation resulting from the calculation of the average offer rate using the Average Offer Rate Lookup Table. Where the value of the percentage point difference lies outside of this range, the percentage point difference may be considered to represent a real difference between the offer rate and the average offer rate.

Other definitions

Age

This analysis uses country-specific age definitions that align with the cut off points for school and college cohorts within the different administrations of the UK. For England and Wales, ages are defined on the 31 August, for Northern Ireland on the 1 July and for Scotland on the 28 February the following year. Defining ages in this way matches the assignment of children to school cohorts. For applicants outside of the UK a cohort cut off of 31 August has been used.

Provider

A higher education provider - a university or college.

UK domiciled

Declared area of permanent residence within England, Northern Ireland, Scotland and Wales. Applicants from the Channel Islands and Isle of Man are not included.