

## G70 University of Greenwich

**Cycle years:** 2010 - 2015

**Cycle Reference Point:** End of Cycle

**Applicant coverage:** UK domiciled

**Reporting groups:** Sex, POLAR3, ethnic group

**Applicant statistics:** June deadline applicants, placed June deadline applicants, all placed applicants, June deadline applicants per 10,000 population, placed June deadline applicants per 10,000 population, all placed applicants per 10,000 population

**Application statistics:** June deadline applications, offers, offer rate, average offer rate, percentage point difference between offer rate and average offer rate, contribution of group to the average offer rate

**Non-disclosure controls:** To avoid the disclosure of information about any individual the following measures are taken

- Applicants, placed applicants, applications and offers are rounded to the nearest 5.
- Applicants/placed applicants per 10,000 population figures are reported as 0 if the applicant/placed applicant figures are rounded to 0.
- All statistics related to the offer rate are not reported when the number of applications for a group is less than 10. The percentage point difference between the offer rate and the average offer rate is not reported when the number of applications for a group is less than 50.
- Offer rates are reported as 0% if there are fewer than 5 offers, and 100% if the number of offers is within 5 of the number of applications. When the offer rate is reported as 0% or 100%, it is reported in italics.

### Contents:

18 year old applicants:	P.1
18 year old applications:	P.2
18 year old applicants by sex:	P.3
18 year old applications by sex:	P.4
18 year old applicants by POLAR3 quintile:	P.7
18 year old applications by POLAR3 quintile:	P.8
18 year old applicants by ethnic group:	P.11
18 year old applications by ethnic group:	P.12
Applicants (all ages):	P.15
Applications (all ages):	P.16
Applicants (all ages) by sex:	P.17
Applications (all ages) by sex:	P.18
Applicants (all ages) by POLAR3 quintile:	P.19
Applications (all ages) by POLAR3 quintile:	P.20
Applicants (all ages) by ethnic group:	P.21
Applications (all ages) by ethnic group:	P.22

## P.1 18 year old applicants

Statistic	2010	2011	2012	2013	2014	2015
June deadline applicants	8,035	9,590	9,295	9,470	10,485	10,175
Placed June deadline applicants	1,390	1,295	1,090	1,225	1,330	1,230
All placed applicants	1,870	1,895	1,360	1,560	1,585	1,440
June deadline applicants per 10,000 population	101.8	124.5	120.1	124.4	139.2	132.8
Placed June deadline applicants per 10,000	17.6	16.8	14.1	16.1	17.7	16.0
All placed applicants per 10,000 population	23.7	24.6	17.6	20.5	21.0	18.8

## P.2 18 year old applications

Statistic	2010	2011	2012	2013	2014	2015
June deadline applications	8,565	10,205	9,820	9,910	10,960	10,505
Offers	6,715	7,475	7,475	7,230	7,895	7,800
Offer rate	78.4%	73.3%	76.1%	73.0%	72.0%	74.3%

### P.3 18 year old applicants by sex

Statistic	Sex	2010	2011	2012	2013	2014	2015
June deadline applicants	Men	3,335	4,020	3,950	3,850	3,985	3,795
	Women	4,700	5,570	5,345	5,620	6,500	6,380
Placed June deadline applicants	Men	610	630	485	505	570	530
	Women	780	665	610	725	760	700
All placed applicants	Men	835	890	615	650	680	610
	Women	1,035	1,005	745	910	905	825
June deadline applicants per 10,000 population	Men	83.1	102.1	99.6	98.6	103.0	96.7
	Women	121.1	147.9	141.8	151.6	177.5	170.7
Placed June deadline applicants per 10,000 population	Men	15.2	16.0	12.2	12.9	14.8	13.5
	Women	20.1	17.7	16.2	19.5	20.7	18.7
All placed applicants per 10,000 population	Men	20.8	22.6	15.5	16.7	17.5	15.6
	Women	26.6	26.7	19.7	24.5	24.7	22.1

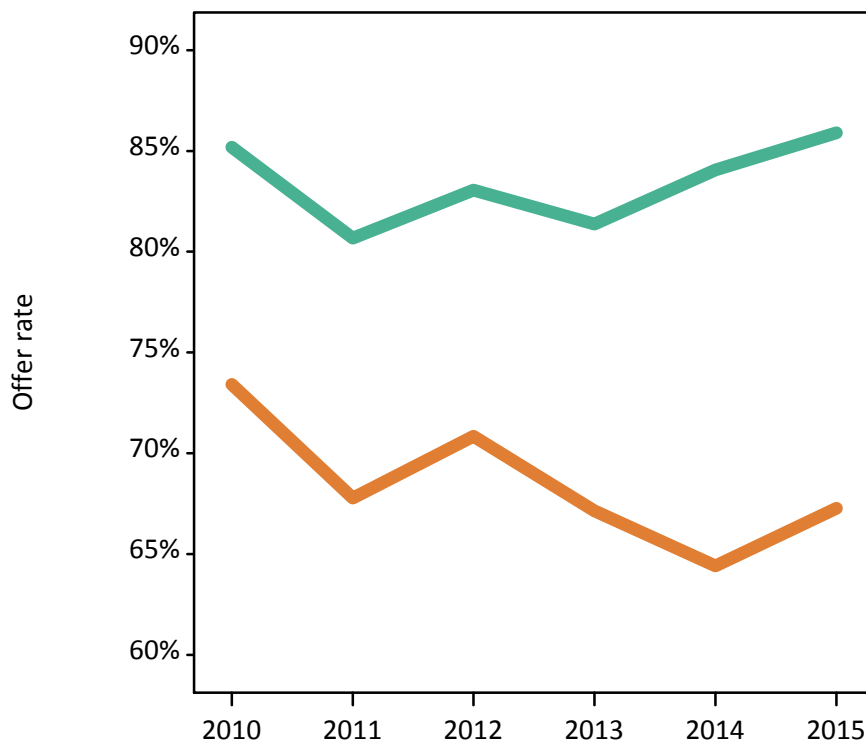
### P.4 18 year old applications by sex

Statistic	Sex	2010	2011	2012	2013	2014	2015
June deadline applications	Men	3,630	4,335	4,235	4,070	4,250	3,950
	Women	4,935	5,870	5,585	5,840	6,710	6,555
Offers	Men	3,095	3,500	3,515	3,310	3,575	3,395
	Women	3,625	3,980	3,955	3,920	4,325	4,410
Offer rate	Men	85.2%	80.7%	83.1%	81.4%	84.1%	85.9%
	Women	73.4%	67.8%	70.8%	67.1%	64.4%	67.3%
Average offer rate	Men	85.2%	80.3%	83.0%	81.4%	83.9%	85.4%
	Women	73.4%	68.1%	70.9%	67.1%	64.5%	67.6%
Percentage point difference between offer rate and average offer rate	Men	-0.0	0.4	0.1	-0.1	0.1	0.5
	Women	0.0	-0.3	-0.1	0.1	-0.1	-0.3
Contribution of group to the average offer rate	Men	0.643	0.625	0.635	0.631	0.612	0.596
	Women	0.737	0.723	0.724	0.743	0.754	0.756

### P.5 18 year old offer rate by sex

Note: The line for a group is not plotted when that group made fewer than 10 applications in any of the years from 2010-2015.

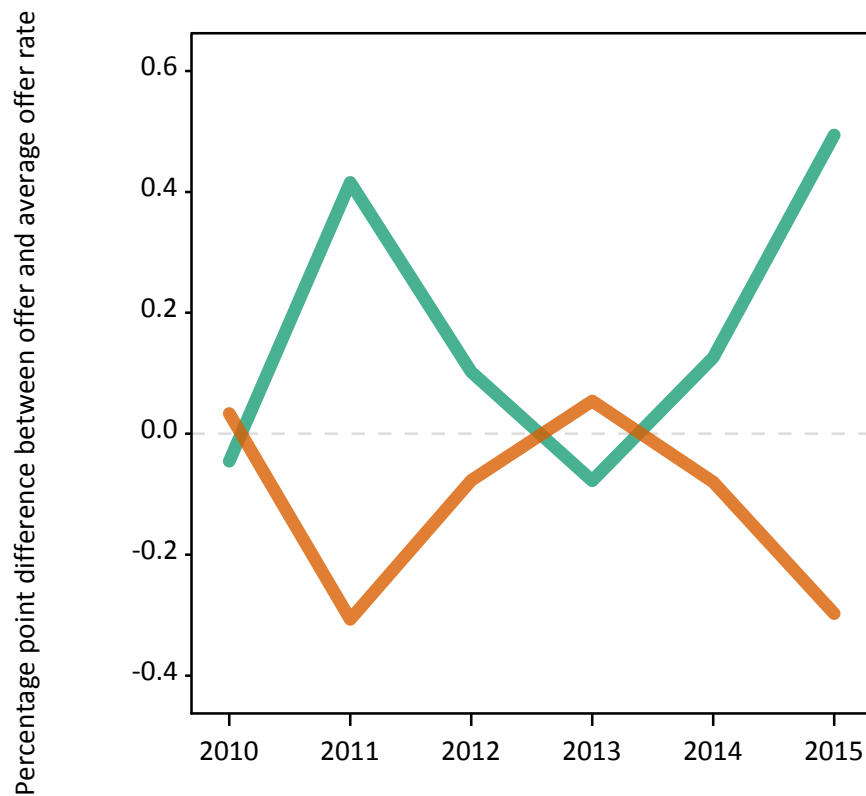
Men  
Women



### P.6 Percentage point difference between 18 year old offer rate and average offer rate by sex

Note: The line for a group is not plotted when that group made fewer than 50 applications in any of the years from 2010-2015.

Men  
Women



## P.7 18 year old applicants by POLAR3 quintile

Statistic	POLAR3 quintile	2010	2011	2012	2013	2014	2015
June deadline applicants	Quintile 1	695	815	745	780	980	890
	Quintile 2	1,245	1,505	1,410	1,395	1,595	1,630
	Quintile 3	2,235	2,605	2,565	2,570	2,765	2,680
	Quintile 4	2,120	2,520	2,500	2,610	2,745	2,680
	Quintile 5	1,725	2,130	2,060	2,100	2,375	2,255
Placed June deadline applicants	Quintile 1	125	100	115	110	150	140
	Quintile 2	240	235	210	210	225	205
	Quintile 3	395	365	285	335	370	350
	Quintile 4	365	340	275	345	330	295
	Quintile 5	265	255	205	225	250	230
All placed applicants	Quintile 1	150	150	130	130	165	160
	Quintile 2	290	320	260	250	260	240
	Quintile 3	530	525	365	430	445	405
	Quintile 4	495	500	340	445	400	365
	Quintile 5	395	400	260	305	310	270
June deadline applicants per 10,000 population	Quintile 1	47.1	56.8	52.4	56.1	70.5	63.7
	Quintile 2	80.8	100.0	94.0	94.6	109.1	109.9
	Quintile 3	140.5	169.2	166.0	168.6	183.9	174.5
	Quintile 4	133.1	161.0	157.5	166.8	178.1	171.2
	Quintile 5	101.9	128.6	122.6	127.0	145.5	134.8
Placed June deadline applicants per 10,000 population	Quintile 1	8.3	7.1	8.1	8.0	10.9	10.1
	Quintile 2	15.7	15.5	14.1	14.2	15.4	13.9
	Quintile 3	24.8	23.6	18.4	22.1	24.6	22.7
	Quintile 4	22.9	21.7	17.3	22.1	21.5	19.0
	Quintile 5	15.7	15.3	12.2	13.5	15.4	13.7
All placed applicants per 10,000 population	Quintile 1	10.2	10.4	9.1	9.2	11.7	11.3
	Quintile 2	18.9	21.3	17.5	17.0	17.8	16.2
	Quintile 3	33.4	34.1	23.7	28.2	29.7	26.2
	Quintile 4	31.2	32.0	21.5	28.4	26.0	23.3
	Quintile 5	23.4	24.0	15.5	18.5	18.9	16.0

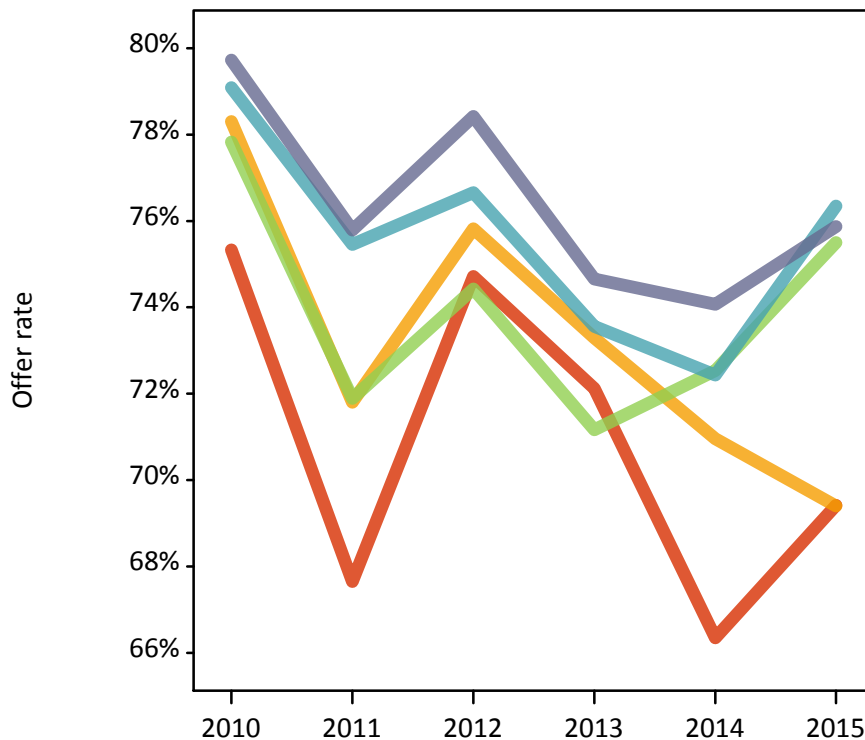
## P.8 18 year old applications by POLAR3 quintile

Statistic	POLAR3 quintile	2010	2011	2012	2013	2014	2015
June deadline applications	Quintile 1	755	885	780	825	1,030	935
	Quintile 2	1,365	1,635	1,520	1,480	1,695	1,710
	Quintile 3	2,370	2,770	2,715	2,675	2,900	2,760
	Quintile 4	2,255	2,680	2,620	2,725	2,870	2,750
	Quintile 5	1,805	2,220	2,170	2,185	2,450	2,315
Offers	Quintile 1	570	600	580	595	680	650
	Quintile 2	1,070	1,175	1,155	1,085	1,200	1,185
	Quintile 3	1,845	1,990	2,020	1,905	2,100	2,085
	Quintile 4	1,785	2,025	2,010	2,005	2,080	2,100
	Quintile 5	1,440	1,685	1,700	1,630	1,815	1,760
Offer rate	Quintile 1	75.3%	67.6%	74.7%	72.1%	66.3%	69.4%
	Quintile 2	78.3%	71.8%	75.8%	73.3%	71.0%	69.4%
	Quintile 3	77.8%	71.9%	74.4%	71.2%	72.5%	75.5%
	Quintile 4	79.1%	75.5%	76.7%	73.6%	72.4%	76.3%
	Quintile 5	79.7%	75.8%	78.4%	74.7%	74.1%	75.9%
Average offer rate	Quintile 1	74.2%	69.2%	73.7%	72.2%	66.8%	69.8%
	Quintile 2	78.2%	71.5%	75.2%	71.6%	70.5%	70.9%
	Quintile 3	77.9%	72.0%	75.2%	71.8%	72.4%	74.9%
	Quintile 4	79.3%	74.5%	76.2%	73.3%	73.3%	75.7%
	Quintile 5	79.9%	76.4%	78.7%	75.3%	73.3%	76.0%
Percentage point difference between offer rate and average offer rate	Quintile 1	1.1	-1.5	1.1	-0.1	-0.4	-0.4
	Quintile 2	0.1	0.3	0.6	1.7	0.4	-1.5
	Quintile 3	-0.1	-0.1	-0.8	-0.6	0.2	0.6
	Quintile 4	-0.2	1.0	0.4	0.2	-0.9	0.6
	Quintile 5	-0.1	-0.6	-0.3	-0.6	0.8	-0.1
Contribution of group to the average offer rate	Quintile 1	0.199	0.160	0.153	0.163	0.167	0.164
	Quintile 2	0.250	0.239	0.232	0.219	0.222	0.233
	Quintile 3	0.353	0.340	0.342	0.334	0.323	0.329
	Quintile 4	0.336	0.330	0.335	0.331	0.323	0.317
	Quintile 5	0.304	0.298	0.304	0.300	0.307	0.300

### P.9 18 year old offer rate by POLAR3 quintile

Note: The line for a group is not plotted when that group made fewer than 10 applications in any of the years from 2010-2015.

- Quintile 1
- Quintile 2
- Quintile 3
- Quintile 4
- Quintile 5



### P.10 Percentage point difference between 18 year old offer rate and average offer rate by POLAR3 quintile

Note: The line for a group is not plotted when that group made fewer than 50 applications in any of the years from 2010-2015.

- Quintile 1
- Quintile 2
- Quintile 3
- Quintile 4
- Quintile 5



## P.11 18 year old applicants by ethnic group

Statistic	Ethnic group	2010	2011	2012	2013	2014	2015
June deadline applicants	Asian	1,865	2,285	2,275	2,565	2,535	2,580
	Black	960	1,270	1,225	1,230	1,240	1,180
	Mixed	420	480	450	460	500	515
	White	4,450	5,140	4,910	4,790	5,730	5,405
	Other	270	350	380	365	425	420
Placed June deadline applicants	Asian	320	265	220	285	275	250
	Black	115	145	85	105	105	110
	Mixed	75	65	50	60	70	70
	White	830	770	695	735	825	725
	Other	35	35	40	40	45	60
All placed applicants	Asian	490	445	300	400	360	310
	Black	200	250	120	160	140	140
	Mixed	100	100	60	75	85	80
	White	1,010	1,020	820	865	930	830
	Other	55	65	55	60	55	70
June deadline applicants per 10,000 population	Asian	301.4	362.6	351.1	388.7	373.8	364.5
	Black	366.4	463.8	435.7	414.6	409.1	370.8
	Mixed	180.4	199.0	173.1	169.8	174.5	167.4
	White	66.4	79.4	76.0	76.1	92.9	86.8
	Other	352.0	433.3	428.3	400.3	457.7	438.2
Placed June deadline applicants per 10,000 population	Asian	52.1	42.2	34.1	43.4	40.7	35.3
	Black	44.3	52.3	29.8	35.4	35.0	35.2
	Mixed	32.4	26.4	19.2	22.2	24.7	22.4
	White	12.4	11.9	10.8	11.7	13.4	11.7
	Other	46.8	45.7	42.9	43.0	46.2	61.3
All placed applicants per 10,000 population	Asian	79.3	70.8	46.3	60.6	52.8	43.5
	Black	76.8	91.1	42.6	53.6	45.5	43.4
	Mixed	42.7	41.7	23.0	27.0	29.5	26.6
	White	15.1	15.7	12.7	13.7	15.1	13.3
	Other	68.8	79.0	59.9	64.0	59.1	72.7



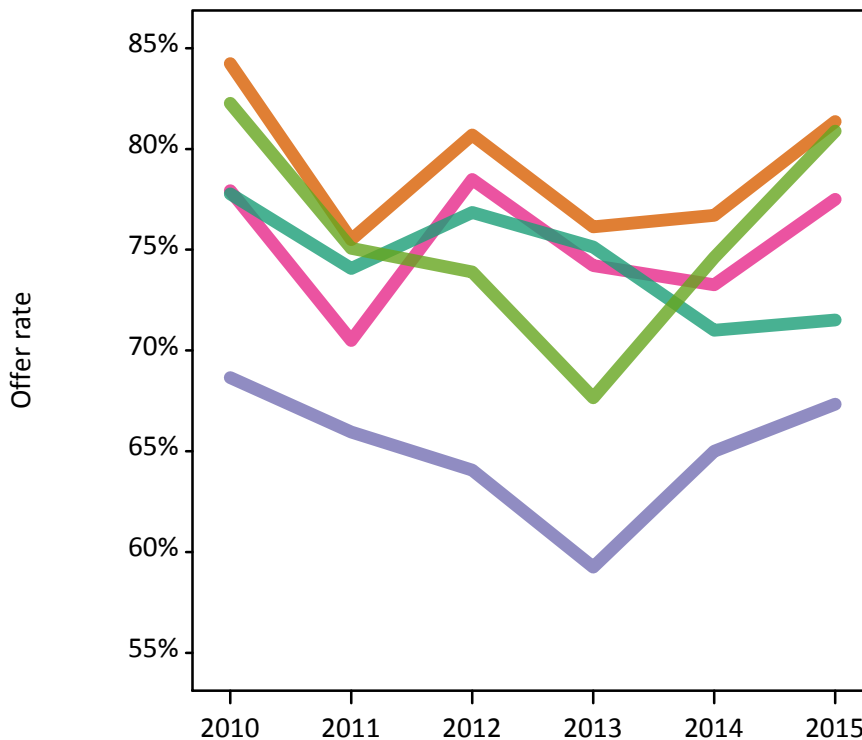
## P.12 18 year old applications by ethnic group

Statistic	Ethnic group	2010	2011	2012	2013	2014	2015
June deadline applications	Asian	1,960	2,415	2,390	2,660	2,625	2,645
	Black	990	1,300	1,255	1,255	1,265	1,195
	Mixed	445	505	475	480	530	530
	White	4,815	5,545	5,260	5,075	6,045	5,630
	Other	280	375	385	370	440	430
Offers	Asian	1,650	1,825	1,925	2,025	2,015	2,150
	Black	680	855	805	745	820	805
	Mixed	345	355	370	355	390	410
	White	3,745	4,110	4,045	3,815	4,290	4,030
	Other	230	280	285	250	330	345
Offer rate	Asian	84.2%	75.5%	80.7%	76.1%	76.7%	81.4%
	Black	68.6%	65.9%	64.1%	59.3%	65.0%	67.3%
	Mixed	77.9%	70.5%	78.5%	74.2%	73.3%	77.5%
	White	77.8%	74.1%	76.9%	75.1%	71.0%	71.5%
	Other	82.3%	75.1%	73.9%	67.7%	74.6%	80.9%
Average offer rate	Asian	83.0%	76.7%	80.3%	76.2%	77.3%	81.2%
	Black	70.9%	67.1%	68.8%	62.7%	67.6%	69.1%
	Mixed	79.4%	73.9%	75.2%	74.7%	72.6%	77.0%
	White	77.7%	72.8%	76.0%	73.8%	70.2%	71.3%
	Other	80.7%	77.3%	75.2%	72.0%	76.4%	80.3%
Percentage point difference between offer rate and average offer rate	Asian	1.2	-1.2	0.4	-0.0	-0.6	0.1
	Black	-2.3	-1.2	-4.8	-3.5	-2.5	-1.8
	Mixed	-1.4	-3.4	3.3	-0.4	0.7	0.5
	White	0.1	1.3	0.8	1.3	0.8	0.2
	Other	1.6	-2.3	-1.3	-4.3	-1.8	0.6
Contribution of group to the average offer rate	Asian	0.369	0.367	0.372	0.375	0.365	0.370
	Black	0.239	0.225	0.223	0.233	0.210	0.210
	Mixed	0.149	0.147	0.127	0.125	0.134	0.122
	White	0.657	0.635	0.628	0.598	0.643	0.631
	Other	0.141	0.127	0.135	0.123	0.124	0.127

**P.13 18 year old offer rate by ethnic group**

Note: The line for a group is not plotted when that group made fewer than 10 applications in any of the years from 2010-2015.

- Asian
- Black
- Mixed
- White
- Other



**P.14 Percentage point difference between 18 year old offer rate and average offer rate by ethnic group**

Note: The line for a group is not plotted when that group made fewer than 50 applications in any of the years from 2010-2015.

- Asian
- Black
- Mixed
- White
- Other



### P.15 Applicants (all ages)

Statistic	2010	2011	2012	2013	2014	2015
June deadline applicants	25,175	29,265	26,420	26,475	28,820	27,030
Placed June deadline applicants	4,150	3,420	2,780	3,380	3,525	3,320
All placed applicants	5,445	4,835	3,695	4,455	4,400	4,215

### P.16 Applications (all ages)

Statistic	2010	2011	2012	2013	2014	2015
June deadline applications	27,550	31,880	28,490	28,340	30,680	28,610
Offers	15,565	15,015	14,155	15,035	15,995	15,765
Offer rate	56.5%	47.1%	49.7%	53.1%	52.1%	55.1%

### P.17 Applicants (all ages) by sex

Statistic	Sex	2010	2011	2012	2013	2014	2015
June deadline applicants	Men	9,905	11,695	10,300	10,085	10,495	9,640
	Women	15,270	17,570	16,125	16,390	18,330	17,390
Placed June deadline applicants	Men	1,790	1,605	1,235	1,395	1,485	1,365
	Women	2,365	1,815	1,540	1,980	2,040	1,960
All placed applicants	Men	2,430	2,280	1,675	1,880	1,860	1,775
	Women	3,015	2,555	2,015	2,575	2,535	2,440

### P.18 Applications (all ages) by sex

Statistic	Sex	2010	2011	2012	2013	2014	2015
June deadline applications	Men	11,045	12,910	11,220	10,915	11,335	10,250
	Women	16,510	18,970	17,270	17,425	19,345	18,355
Offers	Men	7,305	7,225	6,840	7,065	7,520	7,065
	Women	8,265	7,790	7,315	7,970	8,470	8,700
Offer rate	Men	66.1%	56.0%	61.0%	64.7%	66.4%	68.9%
	Women	50.1%	41.1%	42.4%	45.7%	43.8%	47.4%

### P.19 Applicants (all ages) by POLAR3 quintile

Statistic	POLAR3 quintile	2010	2011	2012	2013	2014	2015
June deadline applicants	Quintile 1	1,975	2,425	2,180	2,215	2,630	2,360
	Quintile 2	3,730	4,355	3,830	3,835	4,385	4,130
	Quintile 3	7,785	8,910	8,095	7,960	8,425	7,945
	Quintile 4	6,605	7,590	6,935	6,975	7,390	6,975
	Quintile 5	5,000	5,900	5,300	5,430	5,935	5,520
Placed June deadline applicants	Quintile 1	330	275	290	315	345	320
	Quintile 2	755	600	490	590	595	575
	Quintile 3	1,260	1,055	795	960	1,005	995
	Quintile 4	1,050	840	690	885	880	800
	Quintile 5	745	640	505	630	695	620
All placed applicants	Quintile 1	415	365	355	365	415	380
	Quintile 2	920	795	645	740	720	705
	Quintile 3	1,650	1,470	1,090	1,300	1,295	1,260
	Quintile 4	1,400	1,230	915	1,175	1,095	1,055
	Quintile 5	1,035	960	680	870	860	805

### P.20 Applications (all ages) by POLAR3 quintile

Statistic	POLAR3 quintile	2010	2011	2012	2013	2014	2015
June deadline applications	Quintile 1	2,190	2,670	2,365	2,385	2,805	2,520
	Quintile 2	4,250	4,875	4,235	4,200	4,760	4,450
	Quintile 3	8,550	9,725	8,795	8,545	9,005	8,425
	Quintile 4	7,140	8,190	7,380	7,425	7,805	7,335
	Quintile 5	5,330	6,325	5,625	5,720	6,235	5,770
Offers	Quintile 1	1,200	1,195	1,160	1,210	1,370	1,310
	Quintile 2	2,385	2,280	2,075	2,205	2,400	2,310
	Quintile 3	4,510	4,255	4,005	4,170	4,425	4,405
	Quintile 4	4,140	3,925	3,750	4,080	4,165	4,195
	Quintile 5	3,270	3,335	3,140	3,345	3,600	3,500
Offer rate	Quintile 1	54.8%	44.6%	49.0%	50.8%	48.9%	51.9%
	Quintile 2	56.1%	46.7%	49.0%	52.5%	50.4%	51.9%
	Quintile 3	52.8%	43.8%	45.5%	48.8%	49.1%	52.3%
	Quintile 4	58.0%	47.9%	50.8%	54.9%	53.3%	57.2%
	Quintile 5	61.4%	52.7%	55.8%	58.4%	57.8%	60.7%

## P.21 Applicants (all ages) by ethnic group

Statistic	Ethnic group	2010	2011	2012	2013	2014	2015
June deadline applicants	Asian	4,540	5,540	5,150	5,485	5,660	5,575
	Black	7,355	8,575	7,975	7,355	7,590	7,070
	Mixed	1,305	1,505	1,345	1,370	1,500	1,425
	White	10,875	12,370	10,690	11,030	12,695	11,670
	Other	815	965	1,010	975	1,110	1,035
Placed June deadline applicants	Asian	755	595	465	610	645	560
	Black	900	660	470	650	570	570
	Mixed	220	195	140	175	190	185
	White	2,115	1,830	1,580	1,815	1,985	1,835
	Other	110	100	95	100	105	140
All placed applicants	Asian	1,145	980	680	900	850	780
	Black	1,285	1,030	760	955	815	825
	Mixed	290	275	180	230	250	240
	White	2,515	2,345	1,895	2,165	2,290	2,130
	Other	145	145	135	160	145	190

## P.22 Applications (all ages) by ethnic group

Statistic	Ethnic group	2010	2011	2012	2013	2014	2015
June deadline applications	Asian	4,880	5,965	5,500	5,795	5,915	5,775
	Black	7,965	9,180	8,500	7,820	8,010	7,440
	Mixed	1,425	1,620	1,450	1,470	1,580	1,515
	White	12,085	13,755	11,710	11,975	13,735	12,520
	Other	875	1,030	1,055	1,005	1,160	1,080
Offers	Asian	3,425	3,400	3,495	3,715	3,820	4,000
	Black	2,975	2,480	2,230	2,420	2,435	2,405
	Mixed	830	825	780	795	880	875
	White	7,605	7,620	6,940	7,395	8,010	7,615
	Other	545	550	580	585	715	720
Offer rate	Asian	70.2%	57.0%	63.5%	64.1%	64.6%	69.3%
	Black	37.4%	27.0%	26.3%	30.9%	30.4%	32.3%
	Mixed	58.3%	50.9%	53.7%	54.0%	55.5%	57.7%
	White	62.9%	55.4%	59.3%	61.7%	58.3%	60.8%
	Other	62.0%	53.5%	55.1%	58.0%	61.5%	66.6%

## Technical Notes and Definitions

### UCAS undergraduate scheme

#### Adjustment

Adjustment allows applicants who have met and exceeded the terms of their conditional firm offer to seek and find a place at another provider whilst keeping their place at their original firm choice provider.

#### Clearing

Clearing is a route for applicants that are not placed and holding no offers to find a place on courses with vacancies.

#### Cycle year

The UCAS application cycle which runs from September to October the following year. For example the 2015 cycle runs from September 2014 through to October 2015.

#### End of cycle

The point in the cycle to which the numbers in this report refer, and the point at which the cycle is closed such that no more applications or offers can be made, and no more applicants can be placed. Numbers reported at the end of cycle exclude information on a small number of applicants who cancelled during the cycle.

#### Extra

Applicants who are unsuccessful in obtaining an offer or decline all offers may be eligible to apply through Extra, where they can apply to one further course at a time. Extra operates from 25 February until early July. It provides applicants who are eligible the possibility of obtaining an offer before exam results are published and Clearing starts.

#### June 30 deadline

The deadline for main scheme applications. Applicants who apply after this date will go directly into Clearing.

#### Record of Prior Acceptance (RPA)

RPA is an acceptance route used when a provider informs UCAS of applicants it has accepted outside of the normal application process (e.g. individuals who have applied directly to the provider).

### Reporting groups

#### Ethnic group

High level grouping of ethnic origin as declared by the applicant: 'White', 'Black', 'Asian', 'Mixed', 'Other', 'Unknown'. Applicants who declare themselves as 'Unknown' ethnic origin are not reported in these tables, but are included in the associated csv data file.

#### POLAR3 quintile

Developed by HEFCE, POLAR3 classifies small areas across the UK into five groups according to their level of young participation in Higher Education. Each of these groups represents around 20 per cent of young people and is ranked from Quintile 1 (areas with the lowest young participation rates, considered as the most disadvantaged) to Quintile 5 (highest young participation rates, considered most advantaged). POLAR3 is based on the participation rates of young people between 2005 and 2009 who entered Higher Education between 2005-06 and 2010-11, therefore is most suitable for applicants aged 19 and under. These groups are assigned using the postcode declared by the applicant at the time of their application. If a UK postcode is invalid, considered unsafe for measurement or there is no link to Census geography possible then the applicant is not assigned to a quintile. Applicants with no POLAR3 quintile are not reported.

#### Sex

Sex as declared by the applicant.

### **SIMD quintile**

Scottish index of multiple deprivation (SIMD) for 2012 identifies small area concentrations of multiple deprivation across all of Scotland, providing a relative measure of deprivation amongst 6505 small areas (data zones) based on 7 socio-economic domains. These small areas are classified into five groups ranked from Quintile 1 (considered the most deprived) to Quintile 5 (considered least deprived), with equal populations in each quintile. Quintiles are assigned using the postcode declared by the applicant, applicants declaring invalid postcodes are classified as 'Not assigned' and are not reported.

SIMD is only defined for applicants domiciled in Scotland, therefore any applicants domiciled outside of Scotland cannot be assigned to an SIMD quintile and so are not reported for this measure.

SIMD is only reported for providers in Scotland. Application and entry rates by SIMD are reported in the 2015 End of Cycle Report and the 2016 cycle January deadline application rate report.

### **Statistics reported in the tables**

#### **All placed applicants**

The number of applicants placed for entry into higher education at the provider through one of their choices, including any choices made through Extra, or via Adjustment, Clearing or RPA.

#### **All placed applicants per 10,000 population**

The number of total UK domiciled 18 year old placed applicants for entry into higher education at the provider divided by the number of UK 18 year olds in the population, multiplied by 10,000. This gives the number of 18 year olds, for every 10,000 in the population, that were placed at the provider through one of their choices, including any choices made through Extra, or via Adjustment, Clearing or RPA. It is an alternative way of expressing the entry rate to a provider. By referencing the underlying population this statistic shows how the number of placed applicants is changing in relation to the available pool of potential applicants and so gives the chance that somebody from the group will be placed at a provider.

This statistic is only reported for 18 year olds.

#### **Average offer rate**

The offer rate that you might expect if the predicted grades and subject choice of applicants were the only factors that influenced whether an applicant was made an offer by the provider. The average offer rate is calculated by dividing applicants according to their specific combination of grades (for A levels the best three predicted grades are used, for BTECs, International Baccalaureate and Scottish Highers and Advanced Highers, predicted grades along with any grades already achieved upon applying are used) and subject choice. For each combination the number of main scheme offers is divided by the number of main scheme applications, to give an overall offer rate. This is then multiplied by the number of applications made by the group for which the average offer rate is being calculated (for example POLAR3 quintile 1), to give an average number of offers for that group. These average number of offers are then added together across all combinations of predicted grade and subject and divided by the number of main scheme applications from the group to give the average offer rate.

The average offer rate does not attempt to control for any other factors that may play a part in the decision to make an offer, such as the subject of the qualifications studied, their relevance to a course, or the grade in each subject; higher numbers of A levels being studied; the exact profile of grades predicted; personal statements; teacher references; interviews; or any other criteria (such as work experience or portfolios) that may be part of the admissions decision.

This statistic is only reported for 18 year olds.



### Contribution of group to the average offer rate

The way in which the average offer rate is defined means that the pattern of application and offers of a group (for example POLAR3 quintile 1) will always contribute, in part, to the average offer rate for that group. When this contribution is large, the average offer rate will mainly reflect the patterns for the group, meaning that the value of the average offer rate will be similar to the offer rate, the percentage point difference statistic will be small, and any real difference between the offer rate and what might be expected given the predicted grades and subject choices of the applicants will be difficult to detect.

Values of the contribution of group to the average offer rate range between 0 and 1. The closer the value is to 1 the greater the contribution a group makes to its own average offer rate.

This statistic is only reported for 18 year olds.

### Placed June deadline applicants

An applicant who has been placed for entry into higher education at the provider through a June deadline application.

### Placed June deadline applicants per 10,000 population

The number of UK domiciled 18 year old placed June deadline applicants at the provider divided by the number of UK 18 year olds in the population, multiplied by 10,000. This gives the number of 18 year olds, for every 10,000 in the population, that were placed at the provider through one of their June deadline applications. It is an alternative way of expressing the entry rate to a provider, but for placed June deadline applicants only. By referencing the underlying population this statistic shows how the number of placed June deadline applicants is changing in relation to the available pool of potential 18 year old applicants and so gives the chance that somebody from the group will be placed at a provider through a June deadline application.

This statistic is only reported for 18 year olds.

### June deadline applications

An application (or choice) to a course in higher education to the provider that is made by the June 30 deadline. Each applicant can make up to five choices this way. The number of June deadline applications does not include choices made through the following routes: Clearing, Extra, Adjustment and RPAs. Applications made to October deadline courses received after the October deadline are not included in these statistics.

### June deadline applicants

The number of applicants that made at least one application to the provider by the June 30 deadline.

### June deadline applicants per 10,000 population

The number of UK domiciled 18 year old June deadline applicants to the provider divided by the number of UK 18 year olds in the population, multiplied by 10,000. This gives the number of 18 year olds, for every 10,000 in the population, who applied by the June 30 deadline. It is equivalent to the application rate. By referencing the underlying population this statistic shows how the number of June deadline applicants is changing in relation to the available pool of potential 18 year old applicants and so gives the chance that somebody from the group will apply to a provider by the June 30 deadline.

This statistic is only reported for 18 year olds.

### Offers

An offer is defined as a provider's decision in response to an application to offer a place to an applicant, often subject to the applicant satisfying academic and/or other criteria, via a June deadline application (i.e. does not cover choices made through the following routes: Clearing, Extra, Adjustment and RPAs).

### Offer rate

The number of offers made divided by the number of June deadline applications. This gives the proportion of all June deadline applications to the provider that received an offer.

### Percentage point difference between offer rate and average offer rate

The offer rate minus the average offer rate.

The percentage point difference can be compared to the expected range of statistical variation resulting from the calculation of the average offer rate using the Average Offer Rate Lookup Table. Where the value of the percentage point difference lies outside of this range, the percentage point difference may be considered to represent a real difference between the offer rate and the average offer rate.

### Other definitions

#### Age

This analysis uses country-specific age definitions that align with the cut off points for school and college cohorts within the different administrations of the UK. For England and Wales, ages are defined on the 31 August, for Northern Ireland on the 1 July and for Scotland on the 28 February the following year. Defining ages in this way matches the assignment of children to school cohorts. For applicants outside of the UK a cohort cut off of 31 August has been used.

#### Provider

A higher education provider - a university or college.

#### UK domiciled

Declared area of permanent residence within England, Northern Ireland, Scotland and Wales. Applicants from the Channel Islands and Isle of Man are not included.