

H24 Heriot-Watt University Edinburgh

Cycle years: 2010 - 2015

Cycle Reference Point: End of Cycle

Applicant coverage: UK domiciled

Reporting groups: Sex, POLAR3, SIMD, ethnic group

Applicant statistics: June deadline applicants, placed June deadline applicants, all placed applicants, June deadline applicants per 10,000 population, placed June deadline applicants per 10,000 population, all placed applicants per 10,000 population

Application statistics: June deadline applications, offers, offer rate, average offer rate, percentage point difference between offer rate and average offer rate, contribution of group to the average offer rate

Non-disclosure controls: To avoid the disclosure of information about any individual the following measures are taken

- Applicants, placed applicants, applications and offers are rounded to the nearest 5.
- Applicants/placed applicants per 10,000 population figures are reported as 0 if the applicant/placed applicant figures are rounded to 0.
- All statistics related to the offer rate are not reported when the number of applications for a group is less than 10. The percentage point difference between the offer rate and the average offer rate is not reported when the number of applications for a group is less than 50.
- Offer rates are reported as 0% if there are fewer than 5 offers, and 100% if the number of offers is within 5 of the number of applications. When the offer rate is reported as 0% or 100%, it is reported in italics.

Contents:

18 year old applicants:	P.1
18 year old applications:	P.2
18 year old applicants by sex:	P.3
18 year old applications by sex:	P.4
18 year old applicants by POLAR3 quintile:	P.7
18 year old applications by POLAR3 quintile:	P.8
18 year old, Scotland domiciled applicants by SIMD quintile:	P.11
18 year old, Scotland domiciled applications by SIMD quintile:	P.12
18 year old applicants by ethnic group:	P.15
18 year old applications by ethnic group:	P.16
Applicants (all ages):	P.19
Applications (all ages):	P.20
Applicants (all ages) by sex:	P.21
Applications (all ages) by sex:	P.22
Applicants (all ages) by POLAR3 quintile:	P.23
Applications (all ages) by POLAR3 quintile:	P.24
Scotland domiciled applicants (all ages) by SIMD quintile:	P.25
Scotland domiciled applications (all ages) by SIMD quintile:	P.26
Applicants (all ages) by ethnic group:	P.27
Applications (all ages) by ethnic group:	P.28

P.1 18 year old applicants

Statistic	2010	2011	2012	2013	2014	2015
June deadline applicants	3,895	3,725	4,555	5,040	5,200	5,515
Placed June deadline applicants	620	695	815	930	800	830
All placed applicants	635	780	885	1,015	920	920
June deadline applicants per 10,000 population	49.3	48.4	58.9	66.2	69.0	72.0
Placed June deadline applicants per 10,000	7.8	9.0	10.5	12.2	10.6	10.8
All placed applicants per 10,000 population	8.0	10.1	11.4	13.4	12.2	12.0

P.2 18 year old applications

Statistic	2010	2011	2012	2013	2014	2015
June deadline applications	4,705	4,375	5,310	5,820	6,080	6,295
Offers	3,915	3,350	4,380	4,815	4,845	5,155
Offer rate	83.2%	76.5%	82.5%	82.7%	79.6%	81.9%

P.3 18 year old applicants by sex

Statistic	Sex	2010	2011	2012	2013	2014	2015
June deadline applicants	Men	2,265	2,045	2,555	2,935	3,170	3,310
	Women	1,630	1,680	2,000	2,105	2,025	2,200
Placed June deadline applicants	Men	375	395	460	525	495	490
	Women	245	295	355	400	310	340
All placed applicants	Men	385	435	500	570	560	550
	Women	250	340	385	445	355	370
June deadline applicants per 10,000 population	Men	56.4	51.9	64.4	75.1	81.9	84.4
	Women	42.0	44.6	53.1	56.8	55.4	58.9
Placed June deadline applicants per 10,000 population	Men	9.4	10.1	11.5	13.5	12.7	12.4
	Women	6.3	7.9	9.5	10.8	8.4	9.1
All placed applicants per 10,000 population	Men	9.6	11.1	12.6	14.6	14.5	14.0
	Women	6.4	9.1	10.2	12.1	9.7	9.9

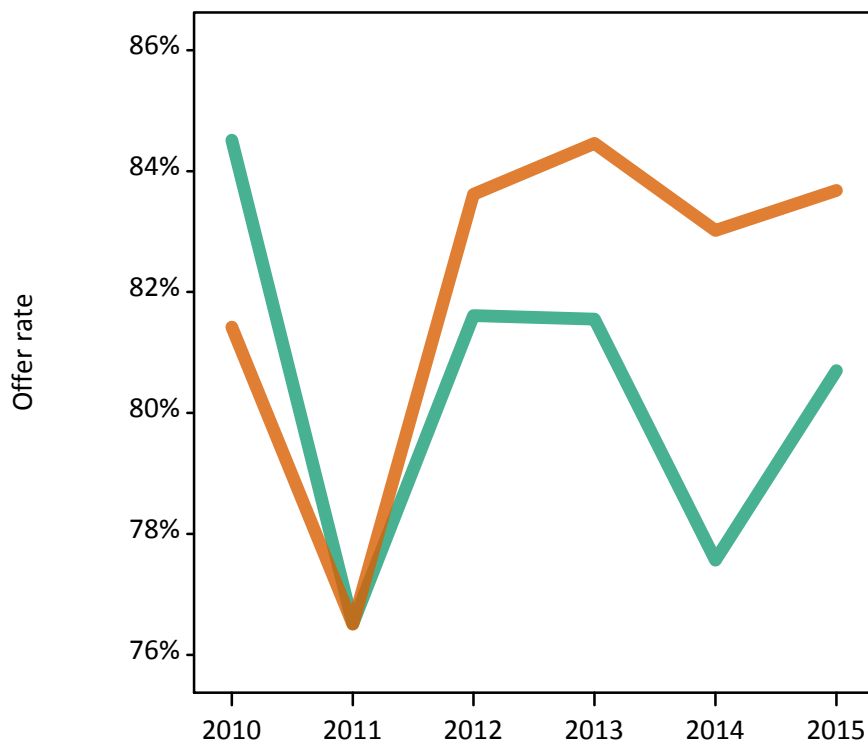
P.4 18 year old applications by sex

Statistic	Sex	2010	2011	2012	2013	2014	2015
June deadline applications	Men	2,775	2,435	3,030	3,420	3,760	3,835
	Women	1,925	1,940	2,285	2,400	2,320	2,465
Offers	Men	2,345	1,865	2,470	2,790	2,920	3,095
	Women	1,570	1,485	1,910	2,025	1,925	2,060
Offer rate	Men	84.5%	76.5%	81.6%	81.5%	77.6%	80.7%
	Women	81.4%	76.5%	83.6%	84.5%	83.0%	83.7%
Average offer rate	Men	85.0%	76.8%	81.8%	81.7%	77.7%	81.5%
	Women	80.7%	76.2%	83.3%	84.2%	82.7%	82.4%
Percentage point difference between offer rate and average offer rate	Men	-0.5	-0.2	-0.2	-0.2	-0.2	-0.8
	Women	0.8	0.3	0.3	0.3	0.3	1.3
Contribution of group to the average offer rate	Men	0.753	0.719	0.730	0.725	0.753	0.734
	Women	0.644	0.648	0.642	0.609	0.600	0.587

P.5 18 year old offer rate by sex

Note: The line for a group is not plotted when that group made fewer than 10 applications in any of the years from 2010-2015.

Men
Women



P.6 Percentage point difference between 18 year old offer rate and average offer rate by sex

Note: The line for a group is not plotted when that group made fewer than 50 applications in any of the years from 2010-2015.

Men
Women



P.7 18 year old applicants by POLAR3 quintile

Statistic	POLAR3 quintile	2010	2011	2012	2013	2014	2015
June deadline applicants	Quintile 1	210	185	215	260	295	330
	Quintile 2	425	375	475	520	535	580
	Quintile 3	650	595	765	805	860	900
	Quintile 4	1,025	925	1,095	1,235	1,280	1,325
	Quintile 5	1,570	1,630	1,990	2,205	2,210	2,360
Placed June deadline applicants	Quintile 1	35	35	30	40	40	45
	Quintile 2	70	45	90	95	100	85
	Quintile 3	105	125	125	150	135	145
	Quintile 4	170	190	185	230	185	200
	Quintile 5	235	300	390	415	340	355
All placed applicants	Quintile 1	35	40	35	45	55	55
	Quintile 2	75	50	100	105	110	95
	Quintile 3	105	140	130	165	160	165
	Quintile 4	175	210	205	255	210	215
	Quintile 5	245	335	415	450	385	390
June deadline applicants per 10,000 population	Quintile 1	14.2	12.9	15.2	18.8	21.3	23.5
	Quintile 2	27.5	25.1	31.6	35.2	36.7	39.1
	Quintile 3	40.7	38.7	49.5	52.7	57.2	58.7
	Quintile 4	64.3	59.0	68.9	79.0	83.2	84.6
	Quintile 5	92.6	98.6	118.4	133.4	135.6	141.1
Placed June deadline applicants per 10,000 population	Quintile 1	2.2	2.4	2.0	2.7	2.9	3.2
	Quintile 2	4.6	2.9	5.9	6.3	6.7	5.8
	Quintile 3	6.5	8.0	8.0	10.0	9.0	9.4
	Quintile 4	10.8	12.1	11.7	14.8	12.0	12.8
	Quintile 5	14.0	18.1	23.1	25.0	20.8	21.1
All placed applicants per 10,000 population	Quintile 1	2.2	2.8	2.4	3.2	3.8	3.9
	Quintile 2	4.7	3.5	6.5	7.3	7.4	6.3
	Quintile 3	6.6	9.0	8.3	10.8	10.6	10.7
	Quintile 4	11.0	13.3	13.0	16.2	13.5	13.9
	Quintile 5	14.4	20.3	24.7	27.1	23.6	23.2

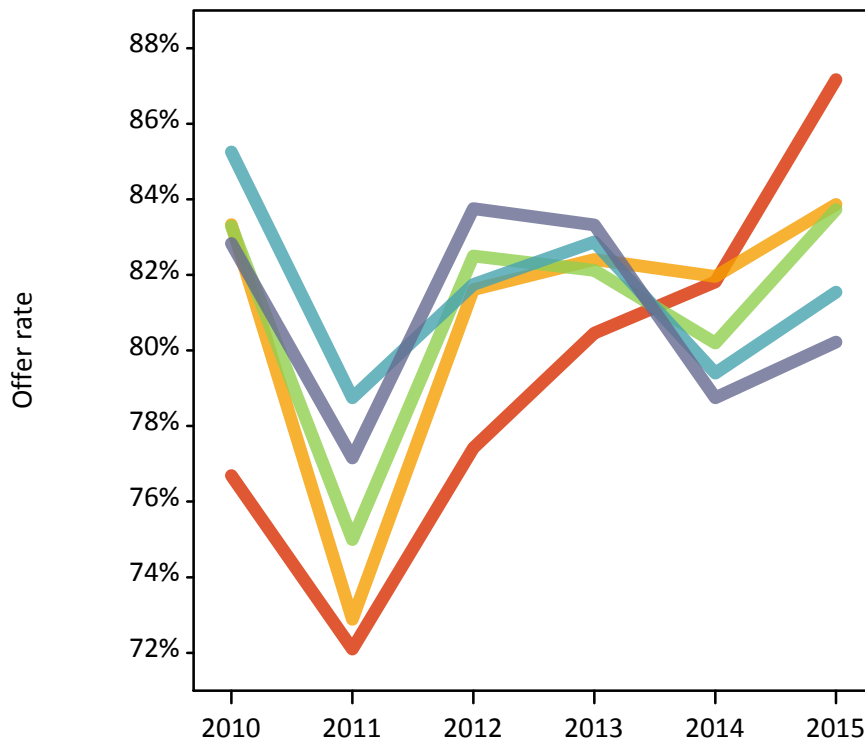
P.8 18 year old applications by POLAR3 quintile

Statistic	POLAR3 quintile	2010	2011	2012	2013	2014	2015
June deadline applications	Quintile 1	265	235	250	305	340	375
	Quintile 2	515	450	570	595	655	655
	Quintile 3	810	710	905	925	1,010	1,045
	Quintile 4	1,240	1,085	1,295	1,440	1,495	1,540
	Quintile 5	1,850	1,885	2,280	2,535	2,570	2,665
Offers	Quintile 1	205	170	190	245	280	325
	Quintile 2	430	330	465	490	535	550
	Quintile 3	675	530	745	760	810	875
	Quintile 4	1,060	855	1,055	1,195	1,185	1,255
	Quintile 5	1,535	1,455	1,910	2,115	2,025	2,140
Offer rate	Quintile 1	76.7%	72.1%	77.4%	80.5%	81.8%	87.2%
	Quintile 2	83.3%	72.9%	81.6%	82.4%	82.0%	83.9%
	Quintile 3	83.3%	75.0%	82.5%	82.1%	80.2%	83.7%
	Quintile 4	85.3%	78.7%	81.7%	82.9%	79.4%	81.5%
	Quintile 5	82.8%	77.2%	83.8%	83.3%	78.7%	80.2%
Average offer rate	Quintile 1	78.0%	71.2%	79.1%	81.6%	81.3%	84.2%
	Quintile 2	84.7%	74.9%	82.9%	81.0%	79.8%	80.2%
	Quintile 3	84.1%	75.7%	82.8%	82.3%	79.9%	81.5%
	Quintile 4	83.3%	78.4%	82.3%	83.8%	80.3%	82.7%
	Quintile 5	83.2%	76.7%	82.8%	82.9%	79.0%	81.8%
Percentage point difference between offer rate and average offer rate	Quintile 1	-1.3	0.9	-1.7	-1.1	0.5	3.0
	Quintile 2	-1.4	-2.0	-1.3	1.4	2.2	3.7
	Quintile 3	-0.8	-0.7	-0.3	-0.1	0.3	2.2
	Quintile 4	2.0	0.3	-0.6	-0.9	-0.9	-1.1
	Quintile 5	-0.4	0.4	1.0	0.4	-0.2	-1.5
Contribution of group to the average offer rate	Quintile 1	0.165	0.185	0.154	0.155	0.161	0.170
	Quintile 2	0.202	0.198	0.193	0.186	0.182	0.182
	Quintile 3	0.247	0.236	0.232	0.221	0.230	0.233
	Quintile 4	0.341	0.327	0.306	0.319	0.308	0.310
	Quintile 5	0.460	0.496	0.489	0.489	0.478	0.477

P.9 18 year old offer rate by POLAR3 quintile

Note: The line for a group is not plotted when that group made fewer than 10 applications in any of the years from 2010-2015.

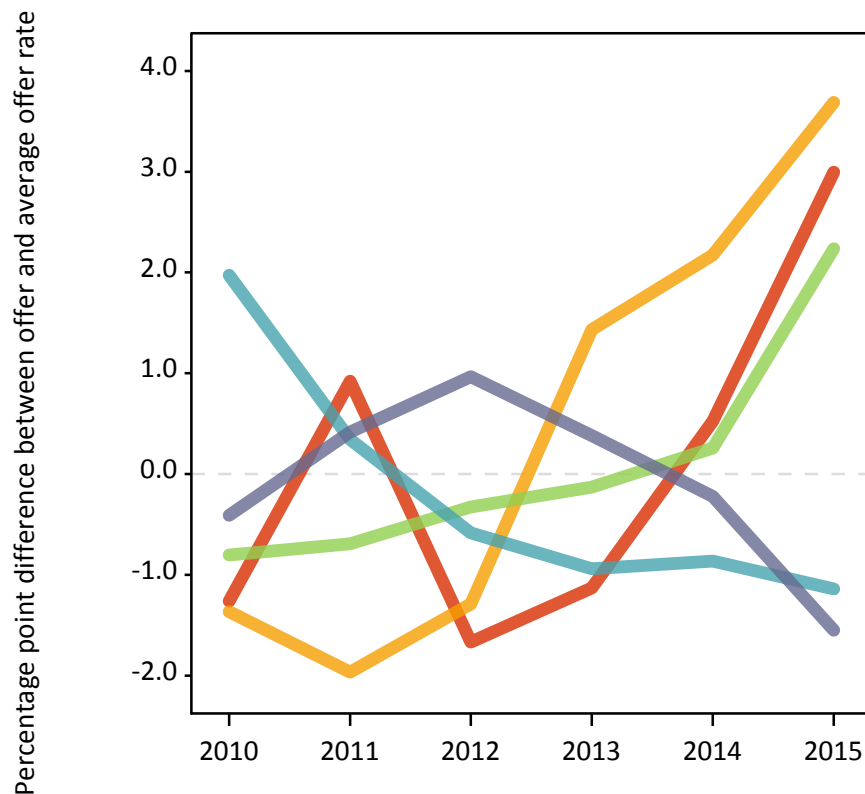
- Quintile 1
- Quintile 2
- Quintile 3
- Quintile 4
- Quintile 5



P.10 Percentage point difference between 18 year old offer rate and average offer rate by POLAR3 quintile

Note: The line for a group is not plotted when that group made fewer than 50 applications in any of the years from 2010-2015.

- Quintile 1
- Quintile 2
- Quintile 3
- Quintile 4
- Quintile 5



P.11 18 year old, Scotland domiciled applicants by SIMD quintile

Statistic	SIMD quintile	2010	2011	2012	2013	2014	2015
June deadline applicants	Quintile 1	165	165	210	250	265	295
	Quintile 2	365	310	380	390	420	450
	Quintile 3	515	455	595	600	660	655
	Quintile 4	690	690	795	845	870	910
	Quintile 5	980	935	1,150	1,175	1,130	1,240
Placed June deadline applicants	Quintile 1	25	35	30	35	45	50
	Quintile 2	70	65	65	80	75	75
	Quintile 3	85	105	115	140	95	105
	Quintile 4	115	135	175	205	150	150
	Quintile 5	175	205	245	255	205	220
All placed applicants	Quintile 1	25	40	30	45	60	55
	Quintile 2	70	75	65	90	95	80
	Quintile 3	90	120	115	140	95	105
	Quintile 4	120	145	180	205	150	155
	Quintile 5	180	235	250	265	210	230
June deadline applicants per 10,000 population	Quintile 1	122.9	124.4	162.3	189.9	203.7	232.1
	Quintile 2	292.1	258.9	324.6	331.2	361.9	395.6
	Quintile 3	413.9	369.8	491.6	502.1	559.7	565.7
	Quintile 4	550.9	552.0	639.7	683.4	703.0	741.5
	Quintile 5	758.4	732.3	912.2	942.8	914.0	1,013.8
Placed June deadline applicants per 10,000 population	Quintile 1	19.1	25.5	21.4	26.7	35.9	39.2
	Quintile 2	56.3	54.9	53.5	70.0	65.5	67.0
	Quintile 3	68.4	85.5	95.2	115.9	79.6	90.5
	Quintile 4	93.6	109.0	141.6	165.6	122.0	124.0
	Quintile 5	136.8	161.7	193.7	204.6	164.9	181.8
All placed applicants per 10,000 population	Quintile 1	19.1	28.5	22.2	35.1	47.3	43.9
	Quintile 2	56.3	62.4	55.2	78.5	80.1	69.6
	Quintile 3	72.5	99.4	96.8	119.2	81.3	91.4
	Quintile 4	95.2	117.8	144.0	166.4	122.8	128.1
	Quintile 5	138.4	183.7	197.7	212.6	171.3	189.2

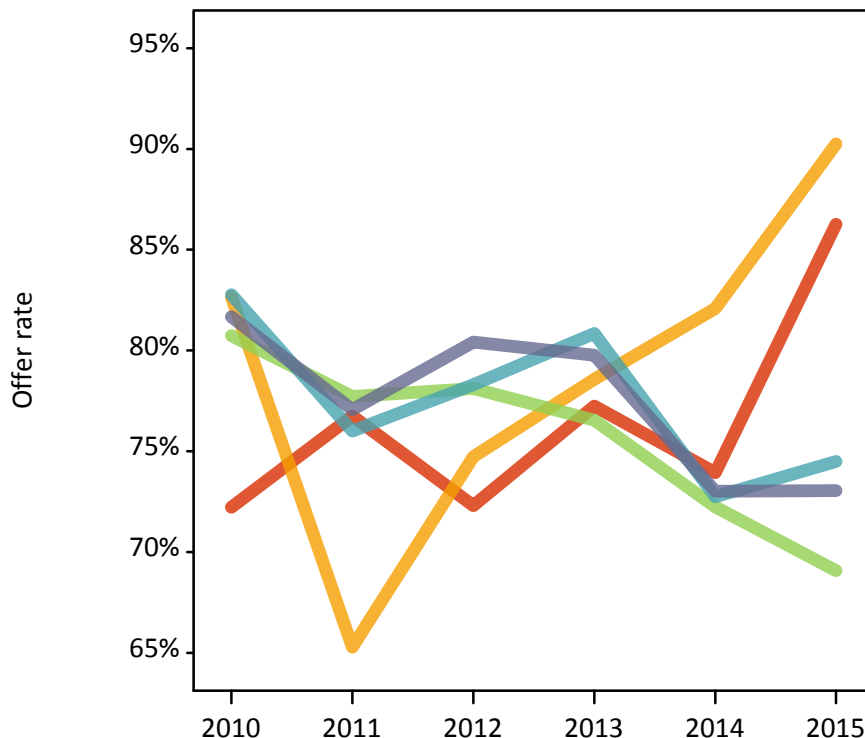
P.12 18 year old, Scotland domiciled applications by SIMD quintile

Statistic	SIMD quintile	2010	2011	2012	2013	2014	2015
June deadline applications	Quintile 1	215	215	260	290	330	340
	Quintile 2	475	385	470	460	520	535
	Quintile 3	655	550	730	715	825	785
	Quintile 4	860	840	960	1,040	1,075	1,095
	Quintile 5	1,255	1,135	1,405	1,445	1,390	1,475
Offers	Quintile 1	155	165	190	225	245	295
	Quintile 2	390	250	350	365	425	480
	Quintile 3	530	430	570	550	595	545
	Quintile 4	710	640	750	840	780	815
	Quintile 5	1,025	875	1,130	1,150	1,015	1,080
Offer rate	Quintile 1	72.2%	76.7%	72.3%	77.2%	73.9%	86.3%
	Quintile 2	82.7%	65.3%	74.7%	78.6%	82.1%	90.2%
	Quintile 3	80.7%	77.7%	78.1%	76.5%	72.2%	69.1%
	Quintile 4	82.8%	76.0%	78.3%	80.8%	72.7%	74.5%
	Quintile 5	81.7%	77.1%	80.4%	79.8%	73.0%	73.1%
Average offer rate	Quintile 1	77.7%	77.6%	77.1%	78.2%	74.2%	75.1%
	Quintile 2	83.4%	71.2%	76.2%	78.5%	71.2%	77.8%
	Quintile 3	80.4%	77.2%	77.9%	78.6%	74.1%	74.9%
	Quintile 4	82.1%	75.8%	78.3%	80.3%	75.5%	77.0%
	Quintile 5	81.1%	75.3%	79.1%	79.0%	73.8%	75.2%
Percentage point difference between offer rate and average offer rate	Quintile 1	-5.5	-0.9	-4.8	-1.0	-0.3	11.1
	Quintile 2	-0.8	-5.9	-1.5	0.1	10.9	12.5
	Quintile 3	0.3	0.6	0.2	-2.1	-1.8	-5.8
	Quintile 4	0.7	0.2	-0.0	0.5	-2.8	-2.5
	Quintile 5	0.6	1.8	1.3	0.8	-0.8	-2.1
Contribution of group to the average offer rate	Quintile 1	0.105	0.107	0.099	0.116	0.115	0.126
	Quintile 2	0.180	0.174	0.166	0.143	0.166	0.164
	Quintile 3	0.222	0.217	0.233	0.210	0.234	0.211
	Quintile 4	0.275	0.297	0.277	0.294	0.292	0.287
	Quintile 5	0.394	0.407	0.397	0.399	0.364	0.380

P.13 18 year old, Scotland domiciled offer rate by SIMD quintile

Note: The line for a group is not plotted when that group made fewer than 10 applications in any of the years from 2010-2015.

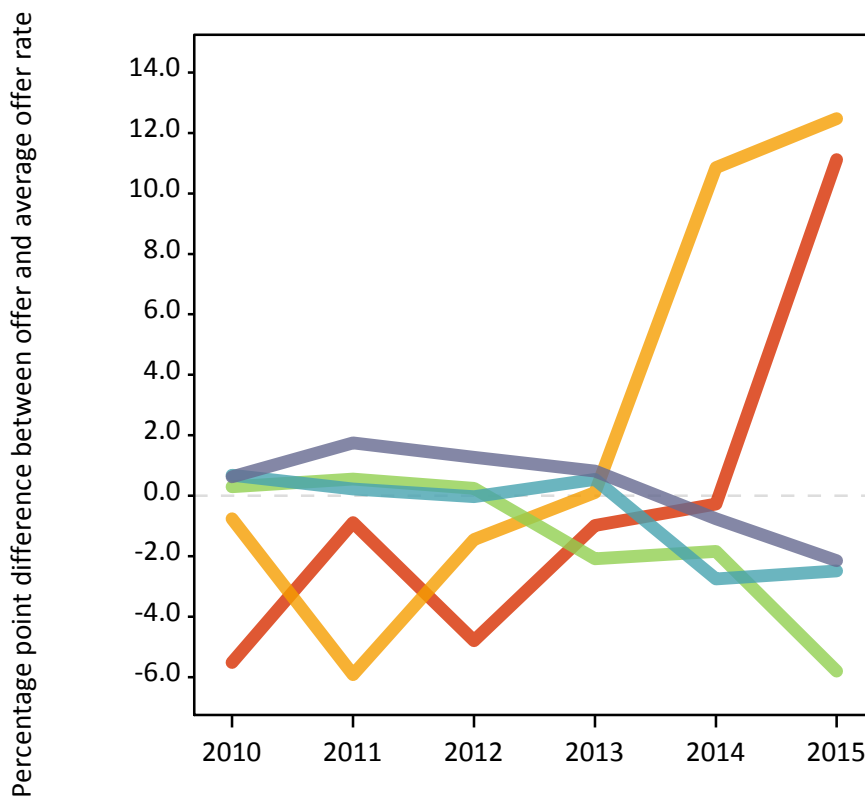
- Quintile 1
- Quintile 2
- Quintile 3
- Quintile 4
- Quintile 5



P.14 Percentage point difference between 18 year old, Scotland domiciled offer rate and average offer rate by SIMD quintile

Note: The line for a group is not plotted when that group made fewer than 50 applications in any of the years from 2010-2015.

- Quintile 1
- Quintile 2
- Quintile 3
- Quintile 4
- Quintile 5



P.15 18 year old applicants by ethnic group

Statistic	Ethnic group	2010	2011	2012	2013	2014	2015
June deadline applicants	Asian	165	140	240	270	280	345
	Black	30	40	45	80	90	100
	Mixed	70	80	85	135	115	140
	White	3,610	3,440	4,150	4,510	4,670	4,855
	Other	5	10	25	25	25	50
Placed June deadline applicants	Asian	25	30	35	40	35	35
	Black	0	5	5	15	15	15
	Mixed	10	15	10	20	20	20
	White	585	640	760	845	725	755
	Other	0	5	0	5	5	5
All placed applicants	Asian	25	35	40	50	50	45
	Black	0	5	10	20	15	15
	Mixed	10	15	15	20	25	20
	White	595	715	815	915	815	825
	Other	0	5	5	5	5	5
June deadline applicants per 10,000 population	Asian	26.9	21.9	37.2	40.8	41.1	49.0
	Black	12.2	14.6	16.0	27.3	29.4	31.4
	Mixed	30.2	33.0	33.0	49.2	39.6	45.4
	White	53.8	53.1	64.2	71.7	75.7	77.9
	Other	7.8	13.6	26.0	27.6	29.0	51.9
Placed June deadline applicants per 10,000 population	Asian	3.7	4.4	5.7	5.8	5.0	4.9
	Black	0.0	1.1	2.1	5.1	4.3	4.1
	Mixed	3.9	6.2	4.2	7.0	6.3	5.8
	White	8.7	9.9	11.8	13.5	11.8	12.1
	Other	0.0	3.7	0.0	4.4	4.3	5.2
All placed applicants per 10,000 population	Asian	4.2	5.7	6.3	7.3	7.4	6.2
	Black	0.0	1.8	3.9	7.1	5.6	5.0
	Mixed	4.3	6.6	5.4	8.1	8.0	6.8
	White	8.9	11.0	12.6	14.5	13.2	13.3
	Other	0.0	3.7	3.4	6.6	7.5	6.2

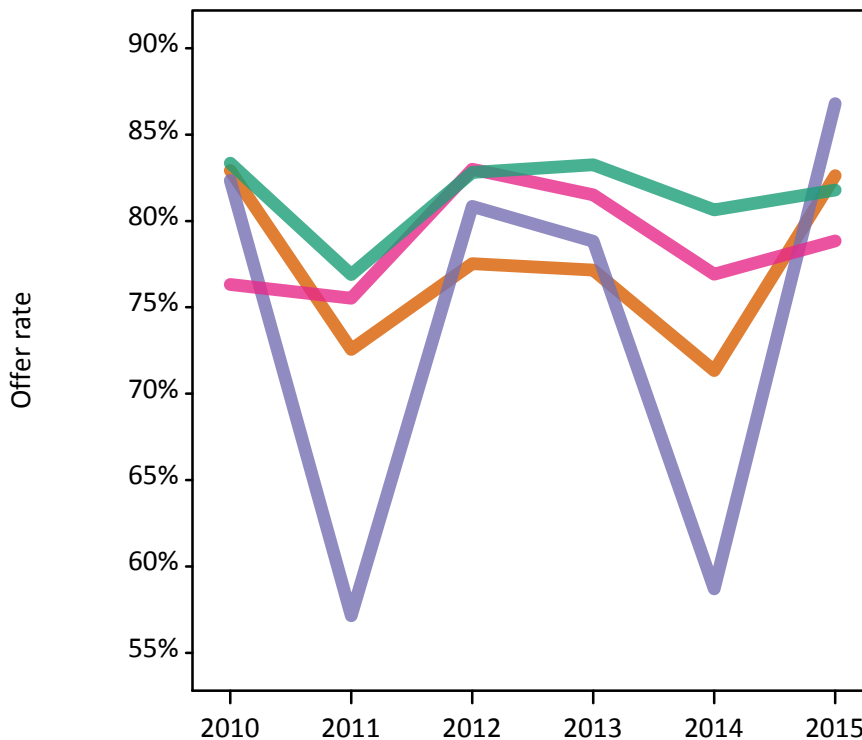
P.16 18 year old applications by ethnic group

Statistic	Ethnic group	2010	2011	2012	2013	2014	2015
June deadline applications	Asian	205	165	265	300	320	380
	Black	35	40	45	85	90	105
	Mixed	75	95	100	145	130	155
	White	4,370	4,045	4,860	5,230	5,490	5,560
	Other	5	15	25	30	30	65
Offers	Asian	170	120	205	235	230	315
	Black	30	25	40	65	55	90
	Mixed	60	70	85	120	100	125
	White	3,645	3,110	4,025	4,355	4,430	4,550
	Other	5	10	20	20	20	50
Offer rate	Asian	82.9%	72.6%	77.5%	77.2%	71.3%	82.6%
	Black	82.4%	57.1%	80.9%	78.8%	58.7%	86.8%
	Mixed	76.3%	75.5%	83.0%	81.5%	76.9%	78.8%
	White	83.3%	76.9%	82.8%	83.3%	80.6%	81.8%
	Other	N/A	100.0%	75.0%	61.3%	75.0%	77.3%
Average offer rate	Asian	83.4%	73.9%	82.1%	78.9%	75.2%	81.5%
	Black	83.9%	64.9%	86.2%	79.8%	71.7%	84.6%
	Mixed	76.6%	73.7%	81.6%	85.3%	79.4%	81.3%
	White	83.3%	76.9%	82.5%	83.0%	80.1%	81.9%
	Other	N/A	71.1%	83.8%	74.0%	79.7%	80.9%
Percentage point difference between offer rate and average offer rate	Asian	-0.5	-1.4	-4.6	-1.7	-3.8	1.1
	Black	N/A	N/A	N/A	-1.0	-13.1	2.2
	Mixed	-0.3	1.8	1.4	-3.8	-2.4	-2.5
	White	0.0	0.0	0.3	0.3	0.6	-0.1
	Other	N/A	N/A	N/A	N/A	N/A	-3.7
Contribution of group to the average offer rate	Asian	0.153	0.127	0.148	0.134	0.144	0.158
	Black	0.149	0.209	0.152	0.149	0.190	0.182
	Mixed	0.127	0.138	0.160	0.124	0.125	0.111
	White	0.939	0.934	0.926	0.911	0.916	0.899
	Other	N/A	0.136	0.125	0.166	0.106	0.094

P.17 18 year old offer rate by ethnic group

Note: The line for a group is not plotted when that group made fewer than 10 applications in any of the years from 2010-2015.

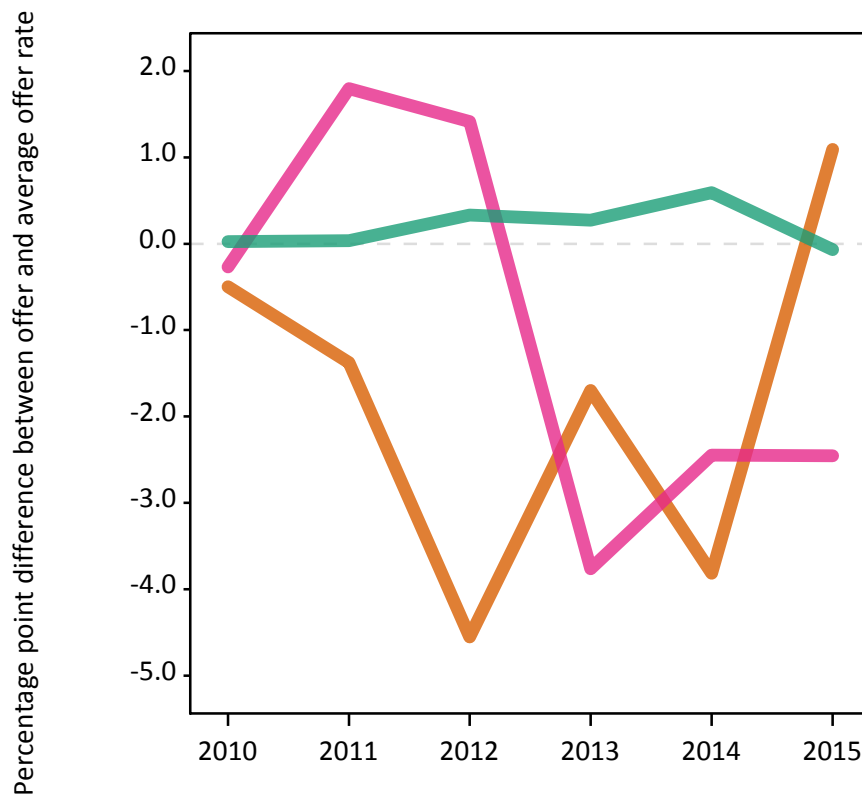
- Asian
- Black
- Mixed
- White
- Other



P.18 Percentage point difference between 18 year old offer rate and average offer rate by ethnic group

Note: The line for a group is not plotted when that group made fewer than 50 applications in any of the years from 2010-2015.

- Asian
- Black
- Mixed
- White
- Other



P.19 Applicants (all ages)

Statistic	2010	2011	2012	2013	2014	2015
June deadline applicants	6,095	6,155	7,240	7,895	8,220	8,600
Placed June deadline applicants	1,040	1,170	1,255	1,570	1,340	1,415
All placed applicants	1,080	1,345	1,375	1,730	1,535	1,585

P.20 Applications (all ages)

Statistic	2010	2011	2012	2013	2014	2015
June deadline applications	7,575	7,535	8,705	9,450	9,845	10,065
Offers	5,530	5,045	6,060	6,945	6,850	7,405
Offer rate	73.0%	66.9%	69.6%	73.5%	69.6%	73.5%

P.21 Applicants (all ages) by sex

Statistic	Sex	2010	2011	2012	2013	2014	2015
June deadline applicants	Men	3,510	3,375	4,045	4,585	4,935	5,185
	Women	2,585	2,780	3,195	3,310	3,285	3,415
Placed June deadline applicants	Men	600	630	685	880	785	815
	Women	445	540	570	690	555	600
All placed applicants	Men	625	715	750	965	910	920
	Women	455	625	620	765	625	665

P.22 Applications (all ages) by sex

Statistic	Sex	2010	2011	2012	2013	2014	2015
June deadline applications	Men	4,395	4,165	4,915	5,530	5,980	6,145
	Women	3,180	3,370	3,790	3,920	3,865	3,920
Offers	Men	3,280	2,770	3,450	4,015	4,105	4,465
	Women	2,250	2,275	2,610	2,930	2,745	2,940
Offer rate	Men	74.7%	66.5%	70.3%	72.6%	68.7%	72.7%
	Women	70.8%	67.5%	68.8%	74.7%	71.0%	74.9%

P.23 Applicants (all ages) by POLAR3 quintile

Statistic	POLAR3 quintile	2010	2011	2012	2013	2014	2015
June deadline applicants	Quintile 1	400	410	440	495	545	600
	Quintile 2	665	675	770	850	895	920
	Quintile 3	1,050	1,025	1,265	1,320	1,385	1,450
	Quintile 4	1,565	1,515	1,705	1,905	2,000	2,050
	Quintile 5	2,380	2,510	3,025	3,300	3,380	3,550
Placed June deadline applicants	Quintile 1	65	70	70	90	90	80
	Quintile 2	120	100	135	160	160	150
	Quintile 3	180	200	210	260	225	235
	Quintile 4	280	320	270	390	320	355
	Quintile 5	395	475	565	670	540	595
All placed applicants	Quintile 1	65	80	80	110	110	90
	Quintile 2	125	120	150	185	185	175
	Quintile 3	180	230	225	290	260	275
	Quintile 4	285	360	305	425	365	385
	Quintile 5	415	550	610	720	610	655

P.24 Applications (all ages) by POLAR3 quintile

Statistic	POLAR3 quintile	2010	2011	2012	2013	2014	2015
June deadline applications	Quintile 1	530	545	545	615	660	725
	Quintile 2	820	830	940	1,035	1,105	1,040
	Quintile 3	1,360	1,260	1,540	1,580	1,675	1,705
	Quintile 4	1,960	1,860	2,070	2,300	2,395	2,460
	Quintile 5	2,870	3,015	3,560	3,890	3,990	4,100
Offers	Quintile 1	325	320	325	410	460	500
	Quintile 2	620	510	645	735	780	805
	Quintile 3	960	815	1,065	1,130	1,125	1,275
	Quintile 4	1,445	1,290	1,420	1,695	1,660	1,795
	Quintile 5	2,160	2,095	2,580	2,955	2,810	3,015
Offer rate	Quintile 1	61.4%	58.9%	59.6%	67.2%	69.7%	69.3%
	Quintile 2	75.4%	61.6%	68.8%	71.3%	70.8%	77.3%
	Quintile 3	70.4%	64.5%	69.2%	71.5%	67.1%	74.7%
	Quintile 4	73.6%	69.2%	68.6%	73.7%	69.4%	73.0%
	Quintile 5	75.3%	69.5%	72.5%	75.9%	70.4%	73.5%

P.25 Scotland domiciled applicants (all ages) by SIMD quintile

Statistic	SIMD quintile	2010	2011	2012	2013	2014	2015
June deadline applicants	Quintile 1	385	420	495	555	535	620
	Quintile 2	660	640	750	725	775	825
	Quintile 3	830	820	970	1,030	1,145	1,110
	Quintile 4	1,090	1,110	1,295	1,320	1,375	1,445
	Quintile 5	1,495	1,500	1,805	1,840	1,795	1,910
Placed June deadline applicants	Quintile 1	65	85	85	105	100	110
	Quintile 2	130	135	120	165	150	165
	Quintile 3	155	175	170	240	165	200
	Quintile 4	200	240	260	325	260	255
	Quintile 5	290	325	365	435	335	370
All placed applicants	Quintile 1	65	100	90	125	130	125
	Quintile 2	130	150	130	190	190	175
	Quintile 3	165	210	175	250	170	215
	Quintile 4	205	270	270	335	265	270
	Quintile 5	305	375	380	455	350	385

P.26 Scotland domiciled applications (all ages) by SIMD quintile

Statistic	SIMD quintile	2010	2011	2012	2013	2014	2015
June deadline applications	Quintile 1	510	570	640	695	675	750
	Quintile 2	875	845	970	920	995	1,010
	Quintile 3	1,095	1,045	1,215	1,285	1,480	1,365
	Quintile 4	1,395	1,405	1,605	1,640	1,705	1,760
	Quintile 5	1,945	1,885	2,245	2,345	2,265	2,345
Offers	Quintile 1	295	330	350	420	430	540
	Quintile 2	600	480	565	605	665	760
	Quintile 3	785	690	790	860	860	850
	Quintile 4	1,000	945	1,050	1,185	1,095	1,170
	Quintile 5	1,440	1,300	1,540	1,690	1,465	1,575
Offer rate	Quintile 1	57.2%	57.9%	54.5%	60.5%	63.6%	72.0%
	Quintile 2	68.2%	56.7%	58.0%	65.7%	66.8%	75.5%
	Quintile 3	71.6%	66.2%	65.0%	66.8%	58.1%	62.4%
	Quintile 4	71.8%	67.5%	65.5%	72.1%	64.4%	66.6%
	Quintile 5	74.0%	68.9%	68.5%	72.2%	64.8%	67.1%

P.27 Applicants (all ages) by ethnic group

Statistic	Ethnic group	2010	2011	2012	2013	2014	2015
June deadline applicants	Asian	330	335	465	500	530	610
	Black	125	145	135	175	205	225
	Mixed	120	150	165	190	200	215
	White	5,470	5,475	6,395	6,930	7,180	7,400
	Other	25	25	50	55	65	100
Placed June deadline applicants	Asian	50	65	60	75	65	85
	Black	5	15	15	25	20	25
	Mixed	25	35	25	30	35	25
	White	955	1,045	1,140	1,420	1,200	1,255
	Other	0	5	10	10	5	10
All placed applicants	Asian	50	80	70	90	90	100
	Black	5	15	20	35	30	30
	Mixed	25	35	30	35	40	35
	White	975	1,185	1,225	1,525	1,345	1,385
	Other	5	5	15	10	15	15

P.28 Applications (all ages) by ethnic group

Statistic	Ethnic group	2010	2011	2012	2013	2014	2015
June deadline applications	Asian	410	420	545	600	625	690
	Black	145	170	150	190	220	250
	Mixed	135	175	200	230	235	240
	White	6,825	6,700	7,720	8,310	8,635	8,690
	Other	25	35	60	65	75	125
Offers	Asian	275	245	335	390	370	515
	Black	80	70	90	110	110	160
	Mixed	95	125	130	165	160	165
	White	5,050	4,565	5,445	6,195	6,150	6,440
	Other	15	20	35	35	40	80
Offer rate	Asian	66.5%	58.3%	61.5%	65.1%	58.9%	74.2%
	Black	55.8%	40.6%	58.6%	58.9%	49.3%	62.7%
	Mixed	69.1%	70.6%	66.2%	71.7%	67.1%	69.5%
	White	74.0%	68.1%	70.6%	74.6%	71.2%	74.1%
	Other	55.6%	52.8%	61.0%	54.7%	49.4%	62.7%

Technical Notes and Definitions

UCAS undergraduate scheme

Adjustment

Adjustment allows applicants who have met and exceeded the terms of their conditional firm offer to seek and find a place at another provider whilst keeping their place at their original firm choice provider.

Clearing

Clearing is a route for applicants that are not placed and holding no offers to find a place on courses with vacancies.

Cycle year

The UCAS application cycle which runs from September to October the following year. For example the 2015 cycle runs from September 2014 through to October 2015.

End of cycle

The point in the cycle to which the numbers in this report refer, and the point at which the cycle is closed such that no more applications or offers can be made, and no more applicants can be placed. Numbers reported at the end of cycle exclude information on a small number of applicants who cancelled during the cycle.

Extra

Applicants who are unsuccessful in obtaining an offer or decline all offers may be eligible to apply through Extra, where they can apply to one further course at a time. Extra operates from 25 February until early July. It provides applicants who are eligible the possibility of obtaining an offer before exam results are published and Clearing starts.

June 30 deadline

The deadline for main scheme applications. Applicants who apply after this date will go directly into Clearing.

Record of Prior Acceptance (RPA)

RPA is an acceptance route used when a provider informs UCAS of applicants it has accepted outside of the normal application process (e.g. individuals who have applied directly to the provider).

Reporting groups

Ethnic group

High level grouping of ethnic origin as declared by the applicant: 'White', 'Black', 'Asian', 'Mixed', 'Other', 'Unknown'. Applicants who declare themselves as 'Unknown' ethnic origin are not reported in these tables, but are included in the associated csv data file.

POLAR3 quintile

Developed by HEFCE, POLAR3 classifies small areas across the UK into five groups according to their level of young participation in Higher Education. Each of these groups represents around 20 per cent of young people and is ranked from Quintile 1 (areas with the lowest young participation rates, considered as the most disadvantaged) to Quintile 5 (highest young participation rates, considered most advantaged). POLAR3 is based on the participation rates of young people between 2005 and 2009 who entered Higher Education between 2005-06 and 2010-11, therefore is most suitable for applicants aged 19 and under. These groups are assigned using the postcode declared by the applicant at the time of their application. If a UK postcode is invalid, considered unsafe for measurement or there is no link to Census geography possible then the applicant is not assigned to a quintile. Applicants with no POLAR3 quintile are not reported.

Sex

Sex as declared by the applicant.

SIMD quintile

Scottish index of multiple deprivation (SIMD) for 2012 identifies small area concentrations of multiple deprivation across all of Scotland, providing a relative measure of deprivation amongst 6505 small areas (data zones) based on 7 socio-economic domains. These small areas are classified into five groups ranked from Quintile 1 (considered the most deprived) to Quintile 5 (considered least deprived), with equal populations in each quintile. Quintiles are assigned using the postcode declared by the applicant, applicants declaring invalid postcodes are classified as 'Not assigned' and are not reported.

SIMD is only defined for applicants domiciled in Scotland, therefore any applicants domiciled outside of Scotland cannot be assigned to an SIMD quintile and so are not reported for this measure.

SIMD is only reported for providers in Scotland. Application and entry rates by SIMD are reported in the 2015 End of Cycle Report and the 2016 cycle January deadline application rate report.

Statistics reported in the tables

All placed applicants

The number of applicants placed for entry into higher education at the provider through one of their choices, including any choices made through Extra, or via Adjustment, Clearing or RPA.

All placed applicants per 10,000 population

The number of total UK domiciled 18 year old placed applicants for entry into higher education at the provider divided by the number of UK 18 year olds in the population, multiplied by 10,000. This gives the number of 18 year olds, for every 10,000 in the population, that were placed at the provider through one of their choices, including any choices made through Extra, or via Adjustment, Clearing or RPA. It is an alternative way of expressing the entry rate to a provider. By referencing the underlying population this statistic shows how the number of placed applicants is changing in relation to the available pool of potential applicants and so gives the chance that somebody from the group will be placed at a provider.

This statistic is only reported for 18 year olds.

Average offer rate

The offer rate that you might expect if the predicted grades and subject choice of applicants were the only factors that influenced whether an applicant was made an offer by the provider. The average offer rate is calculated by dividing applicants according to their specific combination of grades (for A levels the best three predicted grades are used, for BTECs, International Baccalaureate and Scottish Highers and Advanced Highers, predicted grades along with any grades already achieved upon applying are used) and subject choice. For each combination the number of main scheme offers is divided by the number of main scheme applications, to give an overall offer rate. This is then multiplied by the number of applications made by the group for which the average offer rate is being calculated (for example POLAR3 quintile 1), to give an average number of offers for that group. These average number of offers are then added together across all combinations of predicted grade and subject and divided by the number of main scheme applications from the group to give the average offer rate.

The average offer rate does not attempt to control for any other factors that may play a part in the decision to make an offer, such as the subject of the qualifications studied, their relevance to a course, or the grade in each subject; higher numbers of A levels being studied; the exact profile of grades predicted; personal statements; teacher references; interviews; or any other criteria (such as work experience or portfolios) that may be part of the admissions decision.

This statistic is only reported for 18 year olds.

Contribution of group to the average offer rate

The way in which the average offer rate is defined means that the pattern of application and offers of a group (for example POLAR3 quintile 1) will always contribute, in part, to the average offer rate for that group. When this contribution is large, the average offer rate will mainly reflect the patterns for the group, meaning that the value of the average offer rate will be similar to the offer rate, the percentage point difference statistic will be small, and any real difference between the offer rate and what might be expected given the predicted grades and subject choices of the applicants will be difficult to detect.

Values of the contribution of group to the average offer rate range between 0 and 1. The closer the value is to 1 the greater the contribution a group makes to its own average offer rate.

This statistic is only reported for 18 year olds.

Placed June deadline applicants

An applicant who has been placed for entry into higher education at the provider through a June deadline application.

Placed June deadline applicants per 10,000 population

The number of UK domiciled 18 year old placed June deadline applicants at the provider divided by the number of UK 18 year olds in the population, multiplied by 10,000. This gives the number of 18 year olds, for every 10,000 in the population, that were placed at the provider through one of their June deadline applications. It is an alternative way of expressing the entry rate to a provider, but for placed June deadline applicants only. By referencing the underlying population this statistic shows how the number of placed June deadline applicants is changing in relation to the available pool of potential 18 year old applicants and so gives the chance that somebody from the group will be placed at a provider through a June deadline application.

This statistic is only reported for 18 year olds.

June deadline applications

An application (or choice) to a course in higher education to the provider that is made by the June 30 deadline. Each applicant can make up to five choices this way. The number of June deadline applications does not include choices made through the following routes: Clearing, Extra, Adjustment and RPAs. Applications made to October deadline courses received after the October deadline are not included in these statistics.

June deadline applicants

The number of applicants that made at least one application to the provider by the June 30 deadline.

June deadline applicants per 10,000 population

The number of UK domiciled 18 year old June deadline applicants to the provider divided by the number of UK 18 year olds in the population, multiplied by 10,000. This gives the number of 18 year olds, for every 10,000 in the population, who applied by the June 30 deadline. It is equivalent to the application rate. By referencing the underlying population this statistic shows how the number of June deadline applicants is changing in relation to the available pool of potential 18 year old applicants and so gives the chance that somebody from the group will apply to a provider by the June 30 deadline.

This statistic is only reported for 18 year olds.

Offers

An offer is defined as a provider's decision in response to an application to offer a place to an applicant, often subject to the applicant satisfying academic and/or other criteria, via a June deadline application (i.e. does not cover choices made through the following routes: Clearing, Extra, Adjustment and RPAs).

Offer rate

The number of offers made divided by the number of June deadline applications. This gives the proportion of all June deadline applications to the provider that received an offer.

Percentage point difference between offer rate and average offer rate

The offer rate minus the average offer rate.

The percentage point difference can be compared to the expected range of statistical variation resulting from the calculation of the average offer rate using the Average Offer Rate Lookup Table. Where the value of the percentage point difference lies outside of this range, the percentage point difference may be considered to represent a real difference between the offer rate and the average offer rate.

Other definitions

Age

This analysis uses country-specific age definitions that align with the cut off points for school and college cohorts within the different administrations of the UK. For England and Wales, ages are defined on the 31 August, for Northern Ireland on the 1 July and for Scotland on the 28 February the following year. Defining ages in this way matches the assignment of children to school cohorts. For applicants outside of the UK a cohort cut off of 31 August has been used.

Provider

A higher education provider - a university or college.

UK domiciled

Declared area of permanent residence within England, Northern Ireland, Scotland and Wales. Applicants from the Channel Islands and Isle of Man are not included.