

H60 The University of Huddersfield

Cycle years: 2010 - 2015

Cycle Reference Point: End of Cycle

Applicant coverage: UK domiciled

Reporting groups: Sex, POLAR3, ethnic group

Applicant statistics: June deadline applicants, placed June deadline applicants, all placed applicants, June deadline applicants per 10,000 population, placed June deadline applicants per 10,000 population, all placed applicants per 10,000 population

Application statistics: June deadline applications, offers, offer rate, average offer rate, percentage point difference between offer rate and average offer rate, contribution of group to the average offer rate

Non-disclosure controls: To avoid the disclosure of information about any individual the following measures are taken

- Applicants, placed applicants, applications and offers are rounded to the nearest 5.
- Applicants/placed applicants per 10,000 population figures are reported as 0 if the applicant/placed applicant figures are rounded to 0.
- All statistics related to the offer rate are not reported when the number of applications for a group is less than 10. The percentage point difference between the offer rate and the average offer rate is not reported when the number of applications for a group is less than 50.
- Offer rates are reported as 0% if there are fewer than 5 offers, and 100% if the number of offers is within 5 of the number of applications. When the offer rate is reported as 0% or 100%, it is reported in italics.

Contents:

18 year old applicants:	P.1
18 year old applications:	P.2
18 year old applicants by sex:	P.3
18 year old applications by sex:	P.4
18 year old applicants by POLAR3 quintile:	P.7
18 year old applications by POLAR3 quintile:	P.8
18 year old applicants by ethnic group:	P.11
18 year old applications by ethnic group:	P.12
Applicants (all ages):	P.15
Applications (all ages):	P.16
Applicants (all ages) by sex:	P.17
Applications (all ages) by sex:	P.18
Applicants (all ages) by POLAR3 quintile:	P.19
Applications (all ages) by POLAR3 quintile:	P.20
Applicants (all ages) by ethnic group:	P.21
Applications (all ages) by ethnic group:	P.22

P.1 18 year old applicants

Statistic	2010	2011	2012	2013	2014	2015
June deadline applicants	8,045	9,090	9,110	8,010	8,435	9,285
Placed June deadline applicants	1,545	1,865	1,895	1,635	1,775	1,795
All placed applicants	1,755	2,115	2,125	1,895	2,110	2,045
June deadline applicants per 10,000 population	101.9	118.0	117.8	105.3	112.0	121.2
Placed June deadline applicants per 10,000	19.6	24.2	24.5	21.5	23.6	23.4
All placed applicants per 10,000 population	22.2	27.5	27.5	24.9	28.0	26.7

P.2 18 year old applications

Statistic	2010	2011	2012	2013	2014	2015
June deadline applications	9,215	10,185	10,050	8,770	9,205	10,085
Offers	6,545	7,745	7,800	7,225	7,495	8,375
Offer rate	71.0%	76.0%	77.6%	82.4%	81.4%	83.1%

P.3 18 year old applicants by sex

Statistic	Sex	2010	2011	2012	2013	2014	2015
June deadline applicants	Men	3,320	3,775	3,780	3,420	3,500	3,625
	Women	4,720	5,315	5,330	4,590	4,940	5,660
Placed June deadline applicants	Men	700	825	875	700	790	775
	Women	850	1,035	1,020	935	985	1,020
All placed applicants	Men	795	920	970	810	925	855
	Women	960	1,195	1,160	1,085	1,180	1,190
June deadline applicants per 10,000 population	Men	82.7	95.9	95.3	87.6	90.4	92.3
	Women	121.7	141.1	141.4	123.8	134.9	151.5
Placed June deadline applicants per 10,000 population	Men	17.4	21.0	22.1	17.9	20.4	19.7
	Women	21.9	27.5	27.1	25.2	27.0	27.3
All placed applicants per 10,000 population	Men	19.8	23.4	24.4	20.8	23.9	21.8
	Women	24.8	31.8	30.7	29.3	32.3	31.8

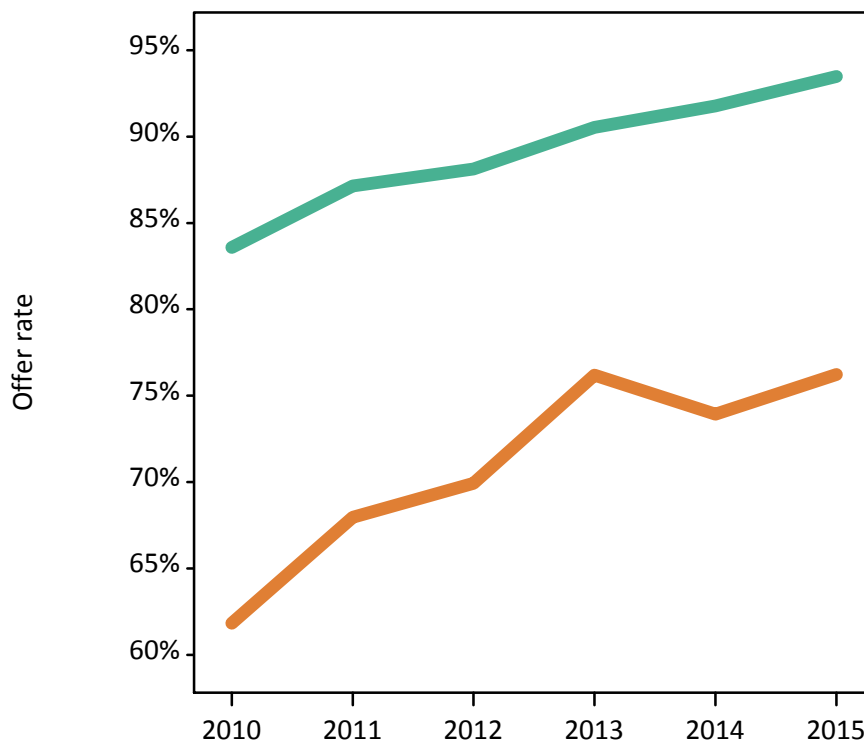
P.4 18 year old applications by sex

Statistic	Sex	2010	2011	2012	2013	2014	2015
June deadline applications	Men	3,900	4,290	4,255	3,780	3,865	3,990
	Women	5,315	5,900	5,795	4,990	5,340	6,095
Offers	Men	3,260	3,735	3,750	3,420	3,545	3,730
	Women	3,285	4,010	4,055	3,800	3,950	4,645
Offer rate	Men	83.6%	87.2%	88.1%	90.5%	91.8%	93.5%
	Women	61.8%	68.0%	69.9%	76.2%	73.9%	76.2%
Average offer rate	Men	83.2%	86.9%	87.9%	90.8%	92.2%	93.4%
	Women	62.1%	68.1%	70.1%	76.0%	73.6%	76.3%
Percentage point difference between offer rate and average offer rate	Men	0.4	0.3	0.3	-0.3	-0.4	0.1
	Women	-0.3	-0.2	-0.2	0.2	0.3	-0.1
Contribution of group to the average offer rate	Men	0.657	0.652	0.638	0.656	0.669	0.636
	Women	0.748	0.747	0.734	0.739	0.760	0.762

P.5 18 year old offer rate by sex

Note: The line for a group is not plotted when that group made fewer than 10 applications in any of the years from 2010-2015.

Men
Women



P.6 Percentage point difference between 18 year old offer rate and average offer rate by sex

Note: The line for a group is not plotted when that group made fewer than 50 applications in any of the years from 2010-2015.

Men
Women



P.7 18 year old applicants by POLAR3 quintile

Statistic	POLAR3 quintile	2010	2011	2012	2013	2014	2015
June deadline applicants	Quintile 1	1,325	1,555	1,590	1,390	1,585	1,710
	Quintile 2	1,960	2,160	2,255	1,915	2,165	2,325
	Quintile 3	2,080	2,210	2,265	2,005	2,085	2,430
	Quintile 4	1,515	1,735	1,660	1,535	1,465	1,645
	Quintile 5	1,155	1,415	1,330	1,160	1,125	1,165
Placed June deadline applicants	Quintile 1	245	330	320	260	310	310
	Quintile 2	405	460	525	440	555	500
	Quintile 3	415	450	475	415	425	475
	Quintile 4	290	370	340	320	305	305
	Quintile 5	185	250	235	195	180	205
All placed applicants	Quintile 1	280	370	355	300	360	350
	Quintile 2	450	525	580	500	635	570
	Quintile 3	480	520	540	490	525	545
	Quintile 4	320	410	375	375	360	350
	Quintile 5	225	290	270	230	230	230
June deadline applicants per 10,000 population	Quintile 1	89.4	108.2	111.7	99.6	114.0	121.9
	Quintile 2	127.5	143.8	150.3	130.0	148.0	156.5
	Quintile 3	130.7	143.8	146.6	131.5	138.5	158.1
	Quintile 4	95.3	110.6	104.5	98.1	95.0	105.0
	Quintile 5	68.1	85.4	79.2	70.1	68.9	69.7
Placed June deadline applicants per 10,000 population	Quintile 1	16.7	23.1	22.5	18.6	22.3	22.1
	Quintile 2	26.4	30.7	34.9	29.9	38.0	33.7
	Quintile 3	26.2	29.3	30.8	27.3	28.2	30.9
	Quintile 4	18.3	23.6	21.3	20.5	19.7	19.4
	Quintile 5	10.9	15.0	14.0	11.8	10.9	12.2
All placed applicants per 10,000 population	Quintile 1	18.8	25.6	25.0	21.6	25.7	24.8
	Quintile 2	29.3	35.1	38.7	33.8	43.3	38.4
	Quintile 3	30.1	33.7	35.0	32.1	34.8	35.4
	Quintile 4	20.2	26.2	23.7	24.0	23.4	22.2
	Quintile 5	13.2	17.5	16.0	13.9	14.0	13.7

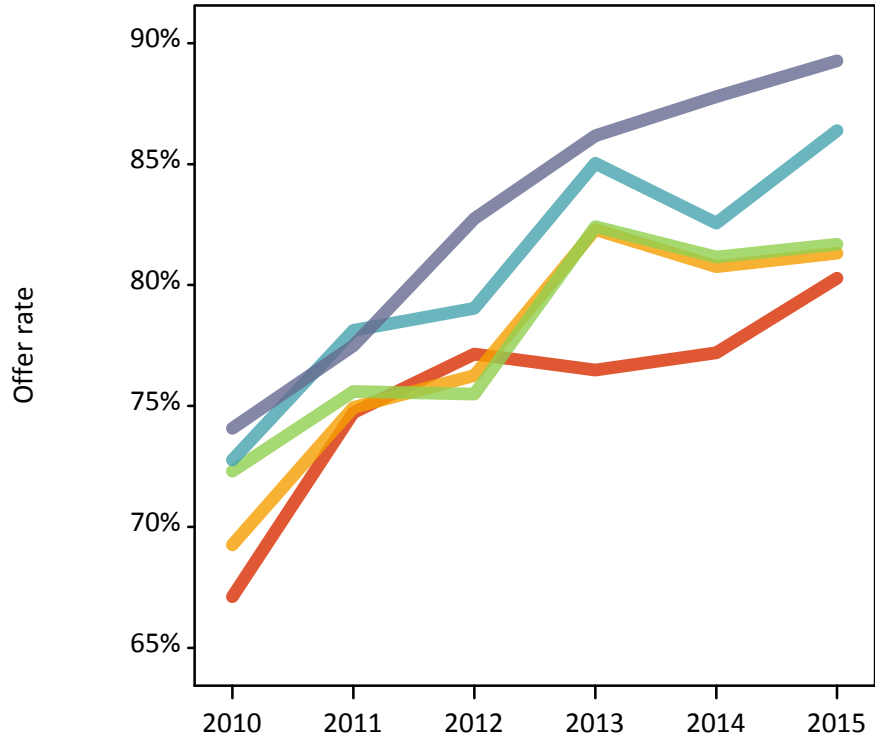
P.8 18 year old applications by POLAR3 quintile

Statistic	POLAR3 quintile	2010	2011	2012	2013	2014	2015
June deadline applications	Quintile 1	1,490	1,745	1,720	1,525	1,685	1,820
	Quintile 2	2,295	2,480	2,555	2,125	2,435	2,590
	Quintile 3	2,440	2,495	2,560	2,240	2,310	2,660
	Quintile 4	1,725	1,930	1,800	1,655	1,585	1,770
	Quintile 5	1,245	1,520	1,400	1,210	1,180	1,230
Offers	Quintile 1	1,000	1,305	1,325	1,170	1,300	1,460
	Quintile 2	1,590	1,860	1,945	1,750	1,970	2,105
	Quintile 3	1,765	1,885	1,935	1,845	1,875	2,175
	Quintile 4	1,255	1,505	1,420	1,410	1,305	1,530
	Quintile 5	925	1,175	1,160	1,040	1,035	1,100
Offer rate	Quintile 1	67.1%	74.7%	77.2%	76.5%	77.2%	80.3%
	Quintile 2	69.3%	74.9%	76.3%	82.3%	80.8%	81.3%
	Quintile 3	72.3%	75.6%	75.5%	82.4%	81.2%	81.7%
	Quintile 4	72.8%	78.1%	79.0%	85.0%	82.6%	86.4%
	Quintile 5	74.1%	77.5%	82.7%	86.2%	87.8%	89.3%
Average offer rate	Quintile 1	68.5%	74.6%	76.5%	78.0%	78.0%	80.7%
	Quintile 2	70.5%	75.0%	76.1%	82.1%	80.4%	81.6%
	Quintile 3	71.2%	75.5%	76.6%	82.5%	81.0%	82.3%
	Quintile 4	72.1%	77.3%	79.1%	84.5%	82.9%	85.2%
	Quintile 5	73.3%	78.7%	81.6%	85.2%	87.3%	88.5%
Percentage point difference between offer rate and average offer rate	Quintile 1	-1.4	0.2	0.6	-1.5	-0.8	-0.4
	Quintile 2	-1.2	-0.1	0.2	0.2	0.4	-0.3
	Quintile 3	1.1	0.1	-1.1	-0.1	0.2	-0.6
	Quintile 4	0.6	0.8	-0.1	0.6	-0.4	1.2
	Quintile 5	0.8	-1.2	1.1	1.0	0.5	0.8
Contribution of group to the average offer rate	Quintile 1	0.242	0.255	0.250	0.258	0.264	0.252
	Quintile 2	0.329	0.318	0.317	0.314	0.332	0.320
	Quintile 3	0.335	0.317	0.319	0.324	0.319	0.323
	Quintile 4	0.265	0.271	0.255	0.272	0.258	0.260
	Quintile 5	0.253	0.252	0.240	0.240	0.252	0.220

P.9 18 year old offer rate by POLAR3 quintile

Note: The line for a group is not plotted when that group made fewer than 10 applications in any of the years from 2010-2015.

- Quintile 1
- Quintile 2
- Quintile 3
- Quintile 4
- Quintile 5



P.10 Percentage point difference between 18 year old offer rate and average offer rate by POLAR3 quintile

Note: The line for a group is not plotted when that group made fewer than 50 applications in any of the years from 2010-2015.

- Quintile 1
- Quintile 2
- Quintile 3
- Quintile 4
- Quintile 5



P.11 18 year old applicants by ethnic group

Statistic	Ethnic group	2010	2011	2012	2013	2014	2015
June deadline applicants	Asian	1,210	1,470	1,545	1,470	1,610	1,835
	Black	180	220	265	270	270	325
	Mixed	175	250	250	205	250	275
	White	6,415	7,090	6,950	5,985	6,225	6,740
	Other	30	35	65	45	65	70
Placed June deadline applicants	Asian	200	235	305	305	345	365
	Black	25	30	40	40	40	50
	Mixed	30	55	45	35	55	50
	White	1,280	1,530	1,485	1,245	1,330	1,305
	Other	5	10	10	5	5	15
All placed applicants	Asian	250	290	380	390	460	460
	Black	30	40	55	55	70	60
	Mixed	40	60	50	40	65	55
	White	1,415	1,710	1,620	1,395	1,500	1,440
	Other	10	10	10	5	10	20
June deadline applicants per 10,000 population	Asian	195.6	233.4	238.7	222.9	237.1	259.6
	Black	68.4	80.5	94.8	91.6	89.4	102.8
	Mixed	75.1	102.4	96.7	75.4	86.2	89.8
	White	95.7	109.5	107.7	95.1	100.9	108.2
	Other	36.4	43.2	73.5	51.8	72.0	73.7
Placed June deadline applicants per 10,000 population	Asian	32.5	37.6	47.4	45.9	50.7	51.6
	Black	9.6	11.0	14.6	13.8	12.9	15.1
	Mixed	12.5	22.3	17.3	12.2	19.5	16.2
	White	19.1	23.7	23.0	19.8	21.5	21.0
	Other	9.1	9.9	10.2	4.4	6.4	17.7
All placed applicants per 10,000 population	Asian	40.8	46.2	58.8	59.1	67.7	65.2
	Black	12.2	15.4	19.2	18.9	23.4	18.5
	Mixed	16.4	24.8	20.0	14.8	22.2	17.8
	White	21.1	26.4	25.1	22.2	24.3	23.1
	Other	10.4	9.9	12.4	7.7	9.7	19.7

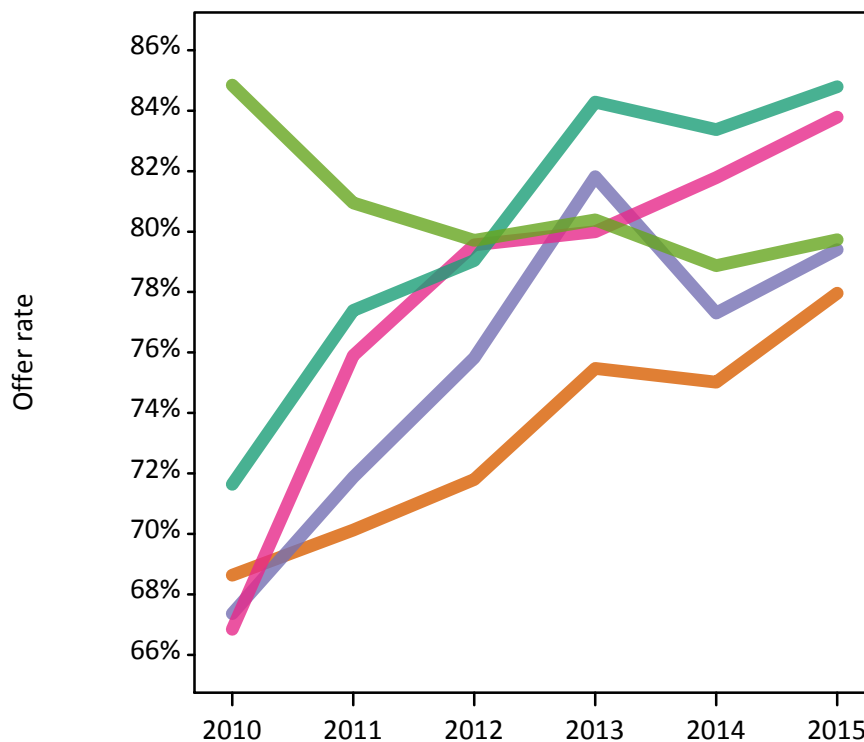
P.12 18 year old applications by ethnic group

Statistic	Ethnic group	2010	2011	2012	2013	2014	2015
June deadline applications	Asian	1,475	1,715	1,850	1,690	1,850	2,115
	Black	195	225	275	275	280	335
	Mixed	195	280	275	215	270	295
	White	7,275	7,895	7,550	6,500	6,715	7,225
	Other	35	40	70	50	70	75
Offers	Asian	1,015	1,205	1,330	1,275	1,385	1,650
	Black	130	160	205	225	220	265
	Mixed	130	210	220	170	220	250
	White	5,210	6,110	5,965	5,480	5,600	6,125
	Other	30	35	55	40	55	60
Offer rate	Asian	68.6%	70.1%	71.8%	75.5%	75.0%	78.0%
	Black	67.4%	71.9%	75.8%	81.8%	77.3%	79.4%
	Mixed	66.8%	75.9%	79.6%	80.0%	81.8%	83.8%
	White	71.6%	77.4%	79.0%	84.3%	83.4%	84.8%
	Other	84.8%	81.0%	79.7%	80.4%	78.9%	79.7%
Average offer rate	Asian	71.2%	72.4%	75.2%	78.1%	77.3%	81.4%
	Black	70.1%	73.0%	79.5%	79.6%	80.6%	79.9%
	Mixed	66.9%	73.1%	77.3%	80.1%	82.4%	84.3%
	White	71.0%	77.0%	78.1%	83.7%	82.5%	83.7%
	Other	85.0%	76.2%	82.3%	85.3%	82.3%	82.3%
Percentage point difference between offer rate and average offer rate	Asian	-2.5	-2.3	-3.4	-2.7	-2.3	-3.4
	Black	-2.8	-1.1	-3.7	2.2	-3.3	-0.5
	Mixed	-0.1	2.8	2.2	-0.1	-0.6	-0.5
	White	0.6	0.4	0.9	0.6	0.8	1.1
	Other	N/A	N/A	-2.6	-4.9	-3.4	-2.5
Contribution of group to the average offer rate	Asian	0.393	0.398	0.392	0.387	0.386	0.370
	Black	0.099	0.122	0.124	0.131	0.136	0.123
	Mixed	0.110	0.109	0.105	0.109	0.103	0.107
	White	0.843	0.835	0.812	0.802	0.790	0.772
	Other	0.078	0.104	0.080	0.105	0.128	0.090

P.13 18 year old offer rate by ethnic group

Note: The line for a group is not plotted when that group made fewer than 10 applications in any of the years from 2010-2015.

- Asian
- Black
- Mixed
- White
- Other



P.14 Percentage point difference between 18 year old offer rate and average offer rate by ethnic group

Note: The line for a group is not plotted when that group made fewer than 50 applications in any of the years from 2010-2015.

- Asian
- Black
- Mixed
- White
- Other



P.15 Applicants (all ages)

Statistic	2010	2011	2012	2013	2014	2015
June deadline applicants	17,110	19,445	18,670	16,820	16,965	17,670
Placed June deadline applicants	3,535	3,950	3,805	3,310	3,390	3,320
All placed applicants	4,230	4,530	4,500	4,015	4,160	3,935

P.16 Applications (all ages)

Statistic	2010	2011	2012	2013	2014	2015
June deadline applications	19,835	22,275	21,100	18,685	18,795	19,395
Offers	11,735	13,720	13,345	12,630	12,725	13,415
Offer rate	59.2%	61.6%	63.2%	67.6%	67.7%	69.2%

P.17 Applicants (all ages) by sex

Statistic	Sex	2010	2011	2012	2013	2014	2015
June deadline applicants	Men	6,870	7,750	7,395	6,770	6,680	6,660
	Women	10,240	11,700	11,275	10,050	10,285	11,010
Placed June deadline applicants	Men	1,565	1,740	1,740	1,480	1,475	1,460
	Women	1,970	2,205	2,065	1,830	1,915	1,860
All placed applicants	Men	1,875	1,990	2,030	1,795	1,815	1,680
	Women	2,355	2,540	2,470	2,220	2,345	2,255

P.18 Applications (all ages) by sex

Statistic	Sex	2010	2011	2012	2013	2014	2015
June deadline applications	Men	8,100	8,980	8,520	7,630	7,500	7,455
	Women	11,740	13,295	12,580	11,055	11,295	11,940
Offers	Men	5,865	6,710	6,580	6,060	5,985	6,165
	Women	5,870	7,010	6,770	6,570	6,735	7,250
Offer rate	Men	72.4%	74.7%	77.2%	79.4%	79.8%	82.7%
	Women	50.0%	52.7%	53.8%	59.4%	59.7%	60.7%

P.19 Applicants (all ages) by POLAR3 quintile

Statistic	POLAR3 quintile	2010	2011	2012	2013	2014	2015
June deadline applicants	Quintile 1	3,260	3,910	3,875	3,460	3,550	3,695
	Quintile 2	4,375	4,835	4,775	4,235	4,500	4,605
	Quintile 3	4,250	4,705	4,545	4,085	4,050	4,350
	Quintile 4	3,040	3,340	3,070	2,925	2,780	2,925
	Quintile 5	2,160	2,615	2,370	2,085	2,060	2,065
Placed June deadline applicants	Quintile 1	640	750	710	590	595	625
	Quintile 2	955	1,025	1,035	920	1,045	955
	Quintile 3	935	945	985	825	790	825
	Quintile 4	655	735	640	615	595	570
	Quintile 5	345	485	430	355	360	340
All placed applicants	Quintile 1	800	860	870	710	720	730
	Quintile 2	1,145	1,165	1,210	1,105	1,245	1,140
	Quintile 3	1,110	1,085	1,165	995	1,005	990
	Quintile 4	740	840	745	760	730	670
	Quintile 5	430	575	495	435	455	395

P.20 Applications (all ages) by POLAR3 quintile

Statistic	POLAR3 quintile	2010	2011	2012	2013	2014	2015
June deadline applications	Quintile 1	3,685	4,435	4,305	3,765	3,805	3,960
	Quintile 2	5,180	5,710	5,550	4,815	5,150	5,205
	Quintile 3	5,055	5,435	5,220	4,595	4,520	4,810
	Quintile 4	3,525	3,795	3,420	3,250	3,110	3,205
	Quintile 5	2,360	2,850	2,570	2,215	2,180	2,185
Offers	Quintile 1	1,990	2,465	2,475	2,265	2,320	2,500
	Quintile 2	2,980	3,435	3,405	3,145	3,470	3,505
	Quintile 3	3,060	3,355	3,355	3,195	3,100	3,400
	Quintile 4	2,175	2,515	2,275	2,350	2,160	2,350
	Quintile 5	1,515	1,935	1,815	1,640	1,650	1,645
Offer rate	Quintile 1	53.9%	55.5%	57.5%	60.1%	61.0%	63.1%
	Quintile 2	57.5%	60.1%	61.3%	65.4%	67.3%	67.3%
	Quintile 3	60.6%	61.7%	64.3%	69.5%	68.5%	70.7%
	Quintile 4	61.7%	66.2%	66.6%	72.4%	69.5%	73.4%
	Quintile 5	64.2%	67.9%	70.7%	74.1%	75.7%	75.3%

P.21 Applicants (all ages) by ethnic group

Statistic	Ethnic group	2010	2011	2012	2013	2014	2015
June deadline applicants	Asian	2,695	3,250	3,315	3,095	3,175	3,440
	Black	1,250	1,515	1,550	1,435	1,305	1,320
	Mixed	480	585	570	495	550	570
	White	12,490	13,870	12,925	11,540	11,690	12,045
	Other	95	130	215	170	185	190
Placed June deadline applicants	Asian	475	530	675	585	615	650
	Black	165	195	195	160	165	150
	Mixed	90	130	120	105	125	105
	White	2,770	3,060	2,760	2,410	2,450	2,355
	Other	10	20	35	25	25	40
All placed applicants	Asian	625	660	850	785	845	865
	Black	245	265	295	230	250	210
	Mixed	120	145	150	130	150	120
	White	3,155	3,400	3,120	2,800	2,850	2,650
	Other	25	25	50	35	45	50

P.22 Applications (all ages) by ethnic group

Statistic	Ethnic group	2010	2011	2012	2013	2014	2015
June deadline applications	Asian	3,315	3,850	4,010	3,580	3,670	3,970
	Black	1,410	1,705	1,695	1,570	1,405	1,405
	Mixed	545	690	645	555	605	635
	White	14,350	15,770	14,400	12,690	12,845	13,050
	Other	105	150	250	195	200	210
Offers	Asian	1,965	2,335	2,595	2,415	2,440	2,775
	Black	460	585	660	655	565	610
	Mixed	295	435	415	375	410	435
	White	8,880	10,200	9,470	9,000	9,140	9,375
	Other	60	95	150	120	130	150
Offer rate	Asian	59.4%	60.6%	64.8%	67.5%	66.5%	69.9%
	Black	32.7%	34.4%	39.0%	41.9%	40.3%	43.3%
	Mixed	54.5%	63.1%	64.3%	67.7%	67.3%	69.0%
	White	61.9%	64.7%	65.8%	70.9%	71.2%	71.8%
	Other	55.8%	61.8%	59.2%	61.1%	64.0%	71.4%

Technical Notes and Definitions

UCAS undergraduate scheme

Adjustment

Adjustment allows applicants who have met and exceeded the terms of their conditional firm offer to seek and find a place at another provider whilst keeping their place at their original firm choice provider.

Clearing

Clearing is a route for applicants that are not placed and holding no offers to find a place on courses with vacancies.

Cycle year

The UCAS application cycle which runs from September to October the following year. For example the 2015 cycle runs from September 2014 through to October 2015.

End of cycle

The point in the cycle to which the numbers in this report refer, and the point at which the cycle is closed such that no more applications or offers can be made, and no more applicants can be placed. Numbers reported at the end of cycle exclude information on a small number of applicants who cancelled during the cycle.

Extra

Applicants who are unsuccessful in obtaining an offer or decline all offers may be eligible to apply through Extra, where they can apply to one further course at a time. Extra operates from 25 February until early July. It provides applicants who are eligible the possibility of obtaining an offer before exam results are published and Clearing starts.

June 30 deadline

The deadline for main scheme applications. Applicants who apply after this date will go directly into Clearing.

Record of Prior Acceptance (RPA)

RPA is an acceptance route used when a provider informs UCAS of applicants it has accepted outside of the normal application process (e.g. individuals who have applied directly to the provider).

Reporting groups

Ethnic group

High level grouping of ethnic origin as declared by the applicant: 'White', 'Black', 'Asian', 'Mixed', 'Other', 'Unknown'. Applicants who declare themselves as 'Unknown' ethnic origin are not reported in these tables, but are included in the associated csv data file.

POLAR3 quintile

Developed by HEFCE, POLAR3 classifies small areas across the UK into five groups according to their level of young participation in Higher Education. Each of these groups represents around 20 per cent of young people and is ranked from Quintile 1 (areas with the lowest young participation rates, considered as the most disadvantaged) to Quintile 5 (highest young participation rates, considered most advantaged). POLAR3 is based on the participation rates of young people between 2005 and 2009 who entered Higher Education between 2005-06 and 2010-11, therefore is most suitable for applicants aged 19 and under. These groups are assigned using the postcode declared by the applicant at the time of their application. If a UK postcode is invalid, considered unsafe for measurement or there is no link to Census geography possible then the applicant is not assigned to a quintile. Applicants with no POLAR3 quintile are not reported.

Sex

Sex as declared by the applicant.

SIMD quintile

Scottish index of multiple deprivation (SIMD) for 2012 identifies small area concentrations of multiple deprivation across all of Scotland, providing a relative measure of deprivation amongst 6505 small areas (data zones) based on 7 socio-economic domains. These small areas are classified into five groups ranked from Quintile 1 (considered the most deprived) to Quintile 5 (considered least deprived), with equal populations in each quintile. Quintiles are assigned using the postcode declared by the applicant, applicants declaring invalid postcodes are classified as 'Not assigned' and are not reported.

SIMD is only defined for applicants domiciled in Scotland, therefore any applicants domiciled outside of Scotland cannot be assigned to an SIMD quintile and so are not reported for this measure.

SIMD is only reported for providers in Scotland. Application and entry rates by SIMD are reported in the 2015 End of Cycle Report and the 2016 cycle January deadline application rate report.

Statistics reported in the tables

All placed applicants

The number of applicants placed for entry into higher education at the provider through one of their choices, including any choices made through Extra, or via Adjustment, Clearing or RPA.

All placed applicants per 10,000 population

The number of total UK domiciled 18 year old placed applicants for entry into higher education at the provider divided by the number of UK 18 year olds in the population, multiplied by 10,000. This gives the number of 18 year olds, for every 10,000 in the population, that were placed at the provider through one of their choices, including any choices made through Extra, or via Adjustment, Clearing or RPA. It is an alternative way of expressing the entry rate to a provider. By referencing the underlying population this statistic shows how the number of placed applicants is changing in relation to the available pool of potential applicants and so gives the chance that somebody from the group will be placed at a provider.

This statistic is only reported for 18 year olds.

Average offer rate

The offer rate that you might expect if the predicted grades and subject choice of applicants were the only factors that influenced whether an applicant was made an offer by the provider. The average offer rate is calculated by dividing applicants according to their specific combination of grades (for A levels the best three predicted grades are used, for BTECs, International Baccalaureate and Scottish Highers and Advanced Highers, predicted grades along with any grades already achieved upon applying are used) and subject choice. For each combination the number of main scheme offers is divided by the number of main scheme applications, to give an overall offer rate. This is then multiplied by the number of applications made by the group for which the average offer rate is being calculated (for example POLAR3 quintile 1), to give an average number of offers for that group. These average number of offers are then added together across all combinations of predicted grade and subject and divided by the number of main scheme applications from the group to give the average offer rate.

The average offer rate does not attempt to control for any other factors that may play a part in the decision to make an offer, such as the subject of the qualifications studied, their relevance to a course, or the grade in each subject; higher numbers of A levels being studied; the exact profile of grades predicted; personal statements; teacher references; interviews; or any other criteria (such as work experience or portfolios) that may be part of the admissions decision.

This statistic is only reported for 18 year olds.

Contribution of group to the average offer rate

The way in which the average offer rate is defined means that the pattern of application and offers of a group (for example POLAR3 quintile 1) will always contribute, in part, to the average offer rate for that group. When this contribution is large, the average offer rate will mainly reflect the patterns for the group, meaning that the value of the average offer rate will be similar to the offer rate, the percentage point difference statistic will be small, and any real difference between the offer rate and what might be expected given the predicted grades and subject choices of the applicants will be difficult to detect.

Values of the contribution of group to the average offer rate range between 0 and 1. The closer the value is to 1 the greater the contribution a group makes to its own average offer rate.

This statistic is only reported for 18 year olds.

Placed June deadline applicants

An applicant who has been placed for entry into higher education at the provider through a June deadline application.

Placed June deadline applicants per 10,000 population

The number of UK domiciled 18 year old placed June deadline applicants at the provider divided by the number of UK 18 year olds in the population, multiplied by 10,000. This gives the number of 18 year olds, for every 10,000 in the population, that were placed at the provider through one of their June deadline applications. It is an alternative way of expressing the entry rate to a provider, but for placed June deadline applicants only. By referencing the underlying population this statistic shows how the number of placed June deadline applicants is changing in relation to the available pool of potential 18 year old applicants and so gives the chance that somebody from the group will be placed at a provider through a June deadline application.

This statistic is only reported for 18 year olds.

June deadline applications

An application (or choice) to a course in higher education to the provider that is made by the June 30 deadline. Each applicant can make up to five choices this way. The number of June deadline applications does not include choices made through the following routes: Clearing, Extra, Adjustment and RPAs. Applications made to October deadline courses received after the October deadline are not included in these statistics.

June deadline applicants

The number of applicants that made at least one application to the provider by the June 30 deadline.

June deadline applicants per 10,000 population

The number of UK domiciled 18 year old June deadline applicants to the provider divided by the number of UK 18 year olds in the population, multiplied by 10,000. This gives the number of 18 year olds, for every 10,000 in the population, who applied by the June 30 deadline. It is equivalent to the application rate. By referencing the underlying population this statistic shows how the number of June deadline applicants is changing in relation to the available pool of potential 18 year old applicants and so gives the chance that somebody from the group will apply to a provider by the June 30 deadline.

This statistic is only reported for 18 year olds.

Offers

An offer is defined as a provider's decision in response to an application to offer a place to an applicant, often subject to the applicant satisfying academic and/or other criteria, via a June deadline application (i.e. does not cover choices made through the following routes: Clearing, Extra, Adjustment and RPAs).

Offer rate

The number of offers made divided by the number of June deadline applications. This gives the proportion of all June deadline applications to the provider that received an offer.

Percentage point difference between offer rate and average offer rate

The offer rate minus the average offer rate.

The percentage point difference can be compared to the expected range of statistical variation resulting from the calculation of the average offer rate using the Average Offer Rate Lookup Table. Where the value of the percentage point difference lies outside of this range, the percentage point difference may be considered to represent a real difference between the offer rate and the average offer rate.

Other definitions

Age

This analysis uses country-specific age definitions that align with the cut off points for school and college cohorts within the different administrations of the UK. For England and Wales, ages are defined on the 31 August, for Northern Ireland on the 1 July and for Scotland on the 28 February the following year. Defining ages in this way matches the assignment of children to school cohorts. For applicants outside of the UK a cohort cut off of 31 August has been used.

Provider

A higher education provider - a university or college.

UK domiciled

Declared area of permanent residence within England, Northern Ireland, Scotland and Wales. Applicants from the Channel Islands and Isle of Man are not included.