

H72 The University of Hull

Cycle years: 2010 - 2015

Cycle Reference Point: End of Cycle

Applicant coverage: UK domiciled

Reporting groups: Sex, POLAR3, ethnic group

Applicant statistics: June deadline applicants, placed June deadline applicants, all placed applicants, June deadline applicants per 10,000 population, placed June deadline applicants per 10,000 population, all placed applicants per 10,000 population

Application statistics: June deadline applications, offers, offer rate, average offer rate, percentage point difference between offer rate and average offer rate, contribution of group to the average offer rate

Non-disclosure controls: To avoid the disclosure of information about any individual the following measures are taken

- Applicants, placed applicants, applications and offers are rounded to the nearest 5.
- Applicants/placed applicants per 10,000 population figures are reported as 0 if the applicant/placed applicant figures are rounded to 0.
- All statistics related to the offer rate are not reported when the number of applications for a group is less than 10. The percentage point difference between the offer rate and the average offer rate is not reported when the number of applications for a group is less than 50.
- Offer rates are reported as 0% if there are fewer than 5 offers, and 100% if the number of offers is within 5 of the number of applications. When the offer rate is reported as 0% or 100%, it is reported in italics.

Contents:

18 year old applicants:	P.1
18 year old applications:	P.2
18 year old applicants by sex:	P.3
18 year old applications by sex:	P.4
18 year old applicants by POLAR3 quintile:	P.7
18 year old applications by POLAR3 quintile:	P.8
18 year old applicants by ethnic group:	P.11
18 year old applications by ethnic group:	P.12
Applicants (all ages):	P.15
Applications (all ages):	P.16
Applicants (all ages) by sex:	P.17
Applications (all ages) by sex:	P.18
Applicants (all ages) by POLAR3 quintile:	P.19
Applications (all ages) by POLAR3 quintile:	P.20
Applicants (all ages) by ethnic group:	P.21
Applications (all ages) by ethnic group:	P.22

P.1 18 year old applicants

Statistic	2010	2011	2012	2013	2014	2015
June deadline applicants	9,610	9,330	8,060	7,830	8,265	7,000
Placed June deadline applicants	1,815	1,660	1,450	1,260	1,270	1,415
All placed applicants	2,135	2,130	1,860	1,685	1,675	1,935
June deadline applicants per 10,000 population	121.7	121.2	104.2	102.9	109.8	91.4
Placed June deadline applicants per 10,000	23.0	21.6	18.7	16.5	16.9	18.5
All placed applicants per 10,000 population	27.0	27.7	24.0	22.1	22.3	25.3

P.2 18 year old applications

Statistic	2010	2011	2012	2013	2014	2015
June deadline applications	10,475	10,215	8,635	8,340	8,800	7,435
Offers	9,610	8,920	7,750	7,310	7,905	6,455
Offer rate	91.7%	87.3%	89.8%	87.7%	89.8%	86.9%

P.3 18 year old applicants by sex

Statistic	Sex	2010	2011	2012	2013	2014	2015
June deadline applicants	Men	4,790	4,560	3,865	3,745	4,185	3,455
	Women	4,820	4,770	4,195	4,085	4,080	3,545
Placed June deadline applicants	Men	910	810	735	620	615	680
	Women	905	850	715	635	655	735
All placed applicants	Men	1,085	1,035	950	845	840	970
	Women	1,050	1,095	910	840	840	965
June deadline applicants per 10,000 population	Men	119.2	115.9	97.5	95.9	108.1	88.1
	Women	124.3	126.7	111.3	110.3	111.5	94.8
Placed June deadline applicants per 10,000 population	Men	22.7	20.5	18.6	15.9	15.9	17.3
	Women	23.3	22.6	18.9	17.2	17.9	19.7
All placed applicants per 10,000 population	Men	27.0	26.3	23.9	21.6	21.7	24.7
	Women	27.0	29.1	24.2	22.7	22.9	25.9

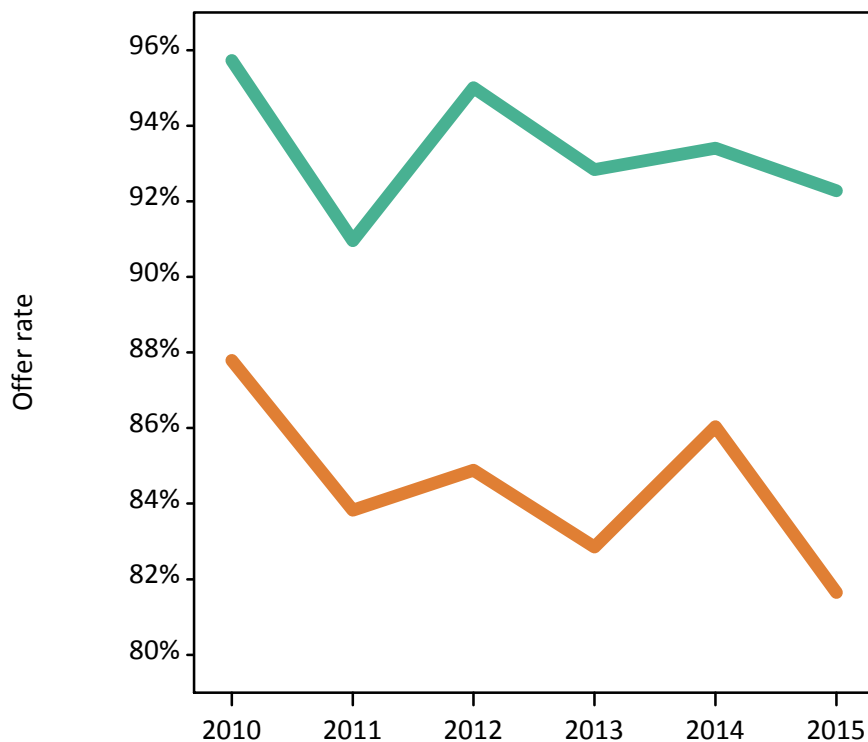
P.4 18 year old applications by sex

Statistic	Sex	2010	2011	2012	2013	2014	2015
June deadline applications	Men	5,220	5,010	4,170	4,010	4,475	3,650
	Women	5,260	5,205	4,465	4,330	4,325	3,780
Offers	Men	4,995	4,560	3,960	3,725	4,180	3,370
	Women	4,615	4,365	3,790	3,590	3,720	3,085
Offer rate	Men	95.7%	91.0%	95.0%	92.8%	93.4%	92.3%
	Women	87.8%	83.8%	84.9%	82.8%	86.0%	81.6%
Average offer rate	Men	95.8%	90.9%	94.7%	92.8%	93.6%	92.3%
	Women	87.7%	83.9%	85.2%	82.9%	85.8%	81.6%
Percentage point difference between offer rate and average offer rate	Men	-0.1	0.0	0.3	0.1	-0.2	-0.1
	Women	0.1	-0.0	-0.3	-0.1	0.2	0.1
Contribution of group to the average offer rate	Men	0.650	0.648	0.663	0.658	0.683	0.681
	Women	0.653	0.661	0.686	0.684	0.672	0.692

P.5 18 year old offer rate by sex

Note: The line for a group is not plotted when that group made fewer than 10 applications in any of the years from 2010-2015.

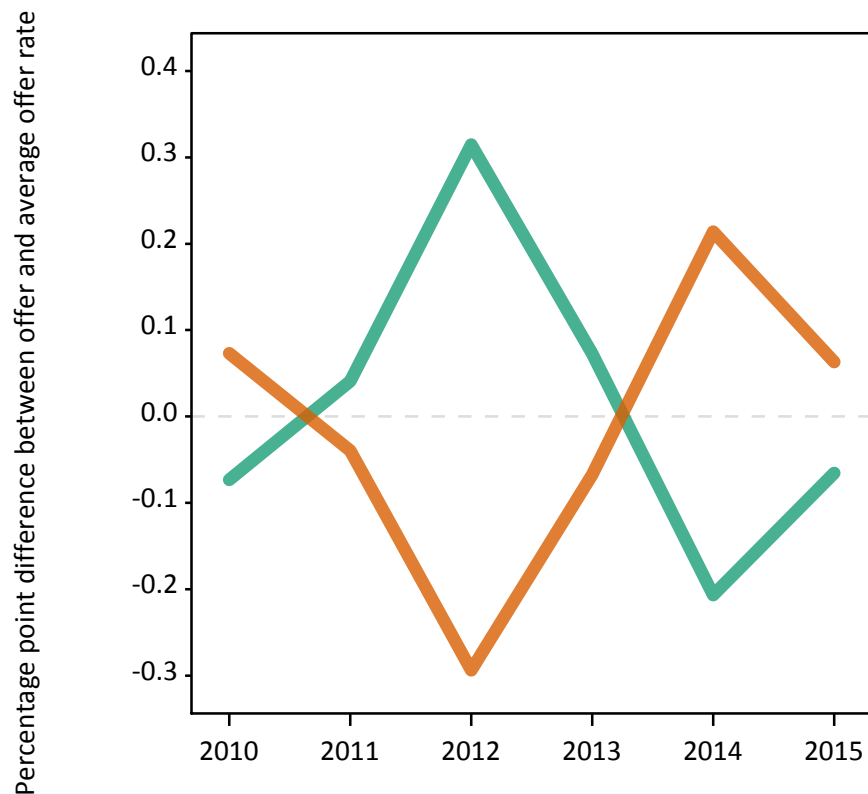
Men
Women



P.6 Percentage point difference between 18 year old offer rate and average offer rate by sex

Note: The line for a group is not plotted when that group made fewer than 50 applications in any of the years from 2010-2015.

Men
Women



P.7 18 year old applicants by POLAR3 quintile

Statistic	POLAR3 quintile	2010	2011	2012	2013	2014	2015
June deadline applicants	Quintile 1	1,415	1,400	1,165	1,245	1,410	1,280
	Quintile 2	1,660	1,660	1,470	1,400	1,530	1,350
	Quintile 3	1,955	1,815	1,665	1,605	1,690	1,465
	Quintile 4	2,150	2,045	1,800	1,750	1,730	1,370
	Quintile 5	2,410	2,395	1,950	1,815	1,895	1,515
Placed June deadline applicants	Quintile 1	290	260	260	215	240	295
	Quintile 2	325	315	270	225	250	270
	Quintile 3	365	320	290	270	270	305
	Quintile 4	405	380	300	275	255	290
	Quintile 5	425	385	330	270	260	260
All placed applicants	Quintile 1	315	305	310	265	285	360
	Quintile 2	365	370	335	295	310	355
	Quintile 3	420	400	365	355	350	410
	Quintile 4	480	485	400	380	355	400
	Quintile 5	555	570	445	380	375	410
June deadline applicants per 10,000 population	Quintile 1	95.6	97.3	81.9	89.3	101.3	91.4
	Quintile 2	108.0	110.3	97.9	95.0	104.7	91.0
	Quintile 3	122.9	118.1	107.7	105.2	112.4	95.5
	Quintile 4	135.1	130.6	113.4	111.8	112.1	87.6
	Quintile 5	142.1	144.8	116.2	109.9	116.1	90.4
Placed June deadline applicants per 10,000 population	Quintile 1	19.7	18.2	18.2	15.4	17.3	20.9
	Quintile 2	21.2	20.8	18.1	15.4	16.9	18.0
	Quintile 3	23.0	20.7	18.8	17.7	17.8	19.9
	Quintile 4	25.5	24.2	18.9	17.6	16.5	18.5
	Quintile 5	25.0	23.3	19.5	16.2	15.9	15.4
All placed applicants per 10,000 population	Quintile 1	21.3	21.1	21.8	18.9	20.5	25.8
	Quintile 2	23.6	24.7	22.3	20.2	21.2	23.8
	Quintile 3	26.3	26.1	23.6	23.4	23.2	26.8
	Quintile 4	30.1	30.8	25.3	24.4	23.1	25.4
	Quintile 5	32.7	34.3	26.5	23.0	22.9	24.4

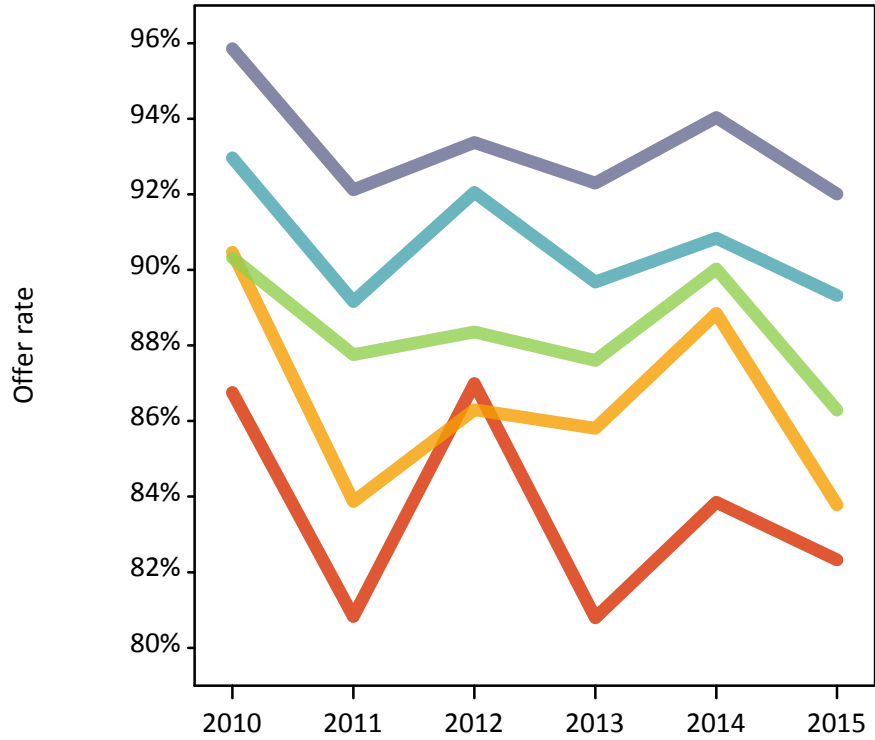
P.8 18 year old applications by POLAR3 quintile

Statistic	POLAR3 quintile	2010	2011	2012	2013	2014	2015
June deadline applications	Quintile 1	1,630	1,610	1,330	1,390	1,535	1,390
	Quintile 2	1,815	1,885	1,570	1,510	1,660	1,435
	Quintile 3	2,150	1,975	1,780	1,710	1,805	1,570
	Quintile 4	2,300	2,185	1,910	1,830	1,810	1,445
	Quintile 5	2,560	2,540	2,035	1,880	1,975	1,575
Offers	Quintile 1	1,415	1,305	1,155	1,125	1,290	1,145
	Quintile 2	1,640	1,580	1,355	1,295	1,475	1,205
	Quintile 3	1,940	1,735	1,570	1,500	1,625	1,355
	Quintile 4	2,140	1,950	1,760	1,640	1,645	1,290
	Quintile 5	2,455	2,340	1,900	1,735	1,860	1,450
Offer rate	Quintile 1	86.8%	80.8%	87.0%	80.8%	83.9%	82.3%
	Quintile 2	90.5%	83.9%	86.3%	85.8%	88.8%	83.8%
	Quintile 3	90.3%	87.8%	88.4%	87.6%	90.0%	86.3%
	Quintile 4	93.0%	89.2%	92.1%	89.7%	90.8%	89.3%
	Quintile 5	95.9%	92.1%	93.4%	92.3%	94.0%	92.0%
Average offer rate	Quintile 1	87.4%	81.7%	86.9%	82.2%	84.8%	81.9%
	Quintile 2	89.9%	85.1%	87.3%	86.0%	89.2%	85.1%
	Quintile 3	91.3%	87.1%	89.2%	87.7%	89.8%	86.5%
	Quintile 4	93.1%	88.9%	91.2%	89.2%	90.7%	89.2%
	Quintile 5	94.9%	91.4%	92.7%	91.5%	93.4%	91.1%
Percentage point difference between offer rate and average offer rate	Quintile 1	-0.6	-0.8	0.1	-1.4	-0.9	0.4
	Quintile 2	0.5	-1.2	-1.0	-0.2	-0.4	-1.3
	Quintile 3	-1.0	0.7	-0.9	-0.1	0.2	-0.2
	Quintile 4	-0.2	0.2	0.9	0.5	0.2	0.2
	Quintile 5	1.0	0.7	0.7	0.8	0.6	0.9
Contribution of group to the average offer rate	Quintile 1	0.258	0.266	0.269	0.286	0.287	0.305
	Quintile 2	0.254	0.270	0.275	0.275	0.282	0.284
	Quintile 3	0.280	0.259	0.295	0.293	0.286	0.301
	Quintile 4	0.292	0.293	0.309	0.309	0.294	0.296
	Quintile 5	0.333	0.342	0.339	0.333	0.333	0.333

P.9 18 year old offer rate by POLAR3 quintile

Note: The line for a group is not plotted when that group made fewer than 10 applications in any of the years from 2010-2015.

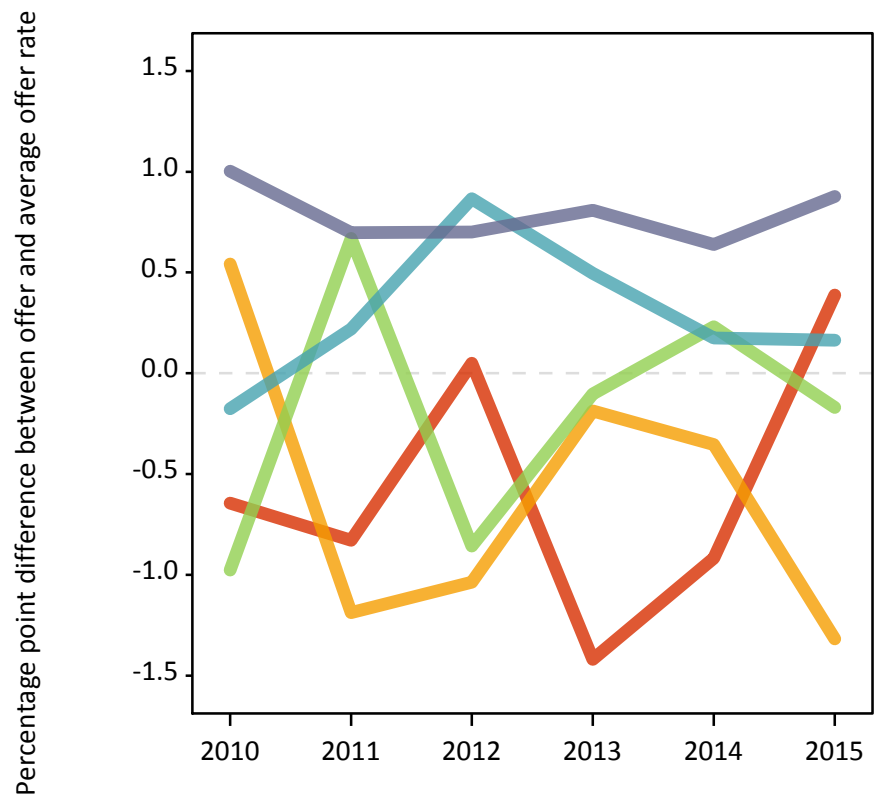
- Quintile 1
- Quintile 2
- Quintile 3
- Quintile 4
- Quintile 5



P.10 Percentage point difference between 18 year old offer rate and average offer rate by POLAR3 quintile

Note: The line for a group is not plotted when that group made fewer than 50 applications in any of the years from 2010-2015.

- Quintile 1
- Quintile 2
- Quintile 3
- Quintile 4
- Quintile 5



P.11 18 year old applicants by ethnic group

Statistic	Ethnic group	2010	2011	2012	2013	2014	2015
June deadline applicants	Asian	395	410	385	390	500	400
	Black	335	320	300	360	435	280
	Mixed	220	250	220	225	240	210
	White	8,575	8,280	7,095	6,790	7,015	6,025
	Other	35	30	35	50	55	50
Placed June deadline applicants	Asian	40	50	40	30	40	40
	Black	40	30	45	25	60	45
	Mixed	35	35	35	35	25	30
	White	1,685	1,535	1,320	1,160	1,140	1,295
	Other	5	5	5	5	5	5
All placed applicants	Asian	55	85	85	75	85	90
	Black	55	50	80	80	105	105
	Mixed	40	55	55	50	35	45
	White	1,960	1,925	1,630	1,460	1,440	1,680
	Other	10	10	10	10	5	10
June deadline applicants per 10,000 population	Asian	64.2	65.1	59.1	59.0	73.4	56.7
	Black	127.6	116.7	106.9	120.6	144.2	88.6
	Mixed	94.1	103.2	84.5	82.5	84.1	67.8
	White	127.9	127.9	109.9	107.9	113.7	96.7
	Other	48.1	38.3	41.8	52.9	58.0	51.9
Placed June deadline applicants per 10,000 population	Asian	6.5	7.8	6.0	4.9	6.2	5.7
	Black	15.3	11.0	16.7	9.1	19.1	13.8
	Mixed	14.2	14.9	13.8	12.2	8.3	9.1
	White	25.1	23.7	20.4	18.4	18.5	20.8
	Other	9.1	3.7	6.8	7.7	4.3	4.2
All placed applicants per 10,000 population	Asian	9.2	13.5	12.8	11.4	12.2	12.7
	Black	21.4	18.3	27.7	27.6	35.0	33.6
	Mixed	17.3	22.3	20.3	18.5	12.2	14.3
	White	29.2	29.7	25.2	23.2	23.3	26.9
	Other	10.4	9.9	13.6	13.2	7.5	11.4

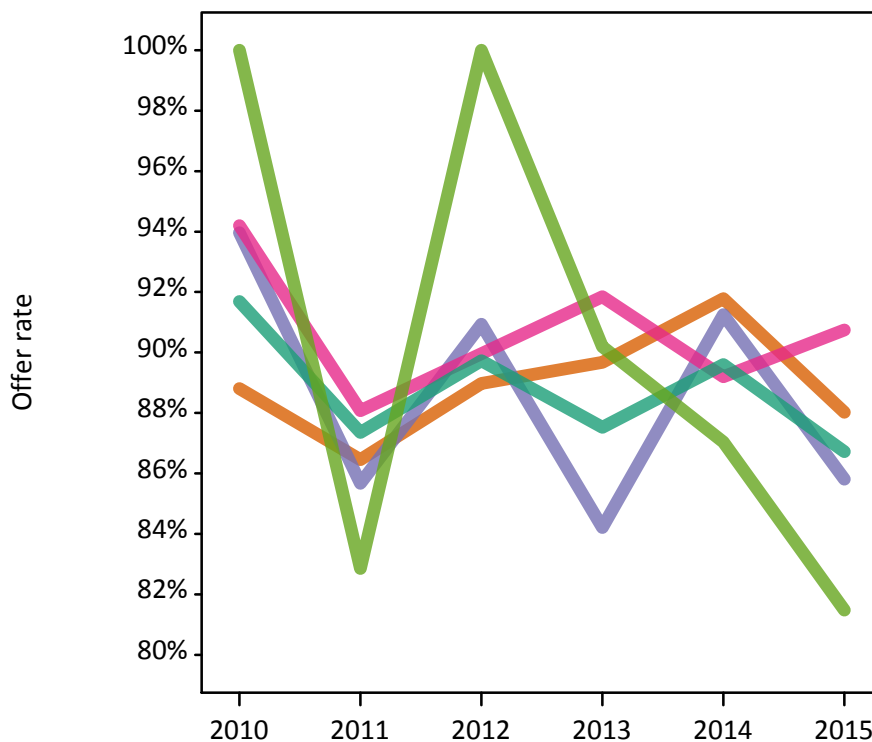
P.12 18 year old applications by ethnic group

Statistic	Ethnic group	2010	2011	2012	2013	2014	2015
June deadline applications	Asian	420	420	400	395	510	410
	Black	350	320	310	360	445	290
	Mixed	225	260	230	235	250	215
	White	9,395	9,135	7,635	7,275	7,515	6,430
	Other	40	35	40	50	55	55
Offers	Asian	375	365	355	355	470	360
	Black	325	275	280	305	405	250
	Mixed	210	230	205	215	225	195
	White	8,615	7,980	6,850	6,365	6,735	5,575
	Other	35	30	40	45	45	45
Offer rate	Asian	88.8%	86.5%	89.0%	89.7%	91.8%	88.0%
	Black	94.0%	85.7%	90.9%	84.2%	91.3%	85.8%
	Mixed	94.2%	88.1%	90.0%	91.8%	89.2%	90.7%
	White	91.7%	87.4%	89.7%	87.5%	89.6%	86.7%
	Other	100.0%	82.9%	100.0%	90.2%	87.0%	81.5%
Average offer rate	Asian	92.0%	89.1%	92.1%	90.9%	93.2%	88.9%
	Black	93.5%	88.6%	93.0%	89.8%	92.6%	88.0%
	Mixed	95.1%	90.3%	91.3%	91.7%	91.5%	91.0%
	White	91.6%	87.1%	89.4%	87.2%	89.3%	86.5%
	Other	93.7%	86.7%	97.8%	93.5%	91.6%	84.5%
Percentage point difference between offer rate and average offer rate	Asian	-3.2	-2.6	-3.1	-1.2	-1.4	-0.9
	Black	0.4	-2.9	-2.1	-5.6	-1.3	-2.2
	Mixed	-0.9	-2.2	-1.3	0.1	-2.3	-0.2
	White	0.1	0.3	0.3	0.4	0.3	0.2
	Other	N/A	N/A	N/A	-3.3	-4.6	-3.1
Contribution of group to the average offer rate	Asian	0.138	0.166	0.160	0.187	0.178	0.180
	Black	0.156	0.156	0.184	0.188	0.201	0.192
	Mixed	0.108	0.113	0.132	0.154	0.127	0.150
	White	0.911	0.910	0.902	0.894	0.880	0.889
	Other	0.095	0.150	0.181	0.147	0.171	0.139

P.13 18 year old offer rate by ethnic group

Note: The line for a group is not plotted when that group made fewer than 10 applications in any of the years from 2010-2015.

- Asian
- Black
- Mixed
- White
- Other



P.14 Percentage point difference between 18 year old offer rate and average offer rate by ethnic group

Note: The line for a group is not plotted when that group made fewer than 50 applications in any of the years from 2010-2015.

- Asian
- Black
- Mixed
- White
- Other



P.15 Applicants (all ages)

Statistic	2010	2011	2012	2013	2014	2015
June deadline applicants	15,335	15,490	12,980	13,245	13,820	12,290
Placed June deadline applicants	3,240	3,025	2,680	2,580	2,670	2,875
All placed applicants	3,735	3,915	3,600	3,590	3,555	3,990

P.16 Applications (all ages)

Statistic	2010	2011	2012	2013	2014	2015
June deadline applications	17,255	17,625	14,430	14,490	15,180	13,495
Offers	14,080	13,490	11,535	11,260	12,180	10,525
Offer rate	81.6%	76.5%	79.9%	77.7%	80.2%	78.0%

P.17 Applicants (all ages) by sex

Statistic	Sex	2010	2011	2012	2013	2014	2015
June deadline applicants	Men	7,525	7,490	6,095	6,210	6,795	5,790
	Women	7,805	8,000	6,880	7,035	7,025	6,495
Placed June deadline applicants	Men	1,545	1,390	1,275	1,160	1,170	1,255
	Women	1,695	1,635	1,400	1,420	1,500	1,620
All placed applicants	Men	1,835	1,770	1,700	1,650	1,610	1,850
	Women	1,900	2,150	1,900	1,935	1,945	2,140

P.18 Applications (all ages) by sex

Statistic	Sex	2010	2011	2012	2013	2014	2015
June deadline applications	Men	8,435	8,480	6,825	6,830	7,420	6,345
	Women	8,820	9,150	7,610	7,665	7,760	7,150
Offers	Men	7,365	6,935	5,950	5,775	6,390	5,440
	Women	6,715	6,555	5,585	5,490	5,790	5,085
Offer rate	Men	87.3%	81.8%	87.2%	84.6%	86.1%	85.8%
	Women	76.1%	71.6%	73.4%	71.6%	74.7%	71.1%

P.19 Applicants (all ages) by POLAR3 quintile

Statistic	POLAR3 quintile	2010	2011	2012	2013	2014	2015
June deadline applicants	Quintile 1	2,745	2,860	2,465	2,665	2,830	2,715
	Quintile 2	2,740	2,820	2,415	2,455	2,590	2,385
	Quintile 3	3,050	2,990	2,645	2,625	2,790	2,485
	Quintile 4	3,320	3,230	2,715	2,760	2,795	2,325
	Quintile 5	3,440	3,550	2,715	2,715	2,790	2,360
Placed June deadline applicants	Quintile 1	675	635	635	635	675	740
	Quintile 2	595	585	520	505	505	580
	Quintile 3	625	575	505	500	525	565
	Quintile 4	680	625	525	495	515	540
	Quintile 5	650	600	485	440	450	440
All placed applicants	Quintile 1	730	770	835	825	850	955
	Quintile 2	665	730	685	690	665	770
	Quintile 3	700	735	680	695	685	805
	Quintile 4	805	805	720	720	705	765
	Quintile 5	820	860	675	645	640	680

P.20 Applications (all ages) by POLAR3 quintile

Statistic	POLAR3 quintile	2010	2011	2012	2013	2014	2015
June deadline applications	Quintile 1	3,285	3,495	2,975	3,085	3,245	3,110
	Quintile 2	3,100	3,330	2,710	2,715	2,885	2,625
	Quintile 3	3,460	3,360	2,900	2,855	3,035	2,715
	Quintile 4	3,645	3,570	2,950	2,945	3,015	2,535
	Quintile 5	3,725	3,835	2,875	2,855	2,970	2,475
Offers	Quintile 1	2,385	2,365	2,155	2,150	2,340	2,220
	Quintile 2	2,480	2,420	2,085	2,025	2,275	1,980
	Quintile 3	2,790	2,595	2,295	2,235	2,460	2,155
	Quintile 4	3,090	2,850	2,455	2,400	2,485	2,035
	Quintile 5	3,300	3,235	2,525	2,425	2,600	2,115
Offer rate	Quintile 1	72.7%	67.6%	72.4%	69.7%	72.1%	71.3%
	Quintile 2	79.9%	72.7%	77.0%	74.5%	78.8%	75.4%
	Quintile 3	80.6%	77.1%	79.1%	78.4%	81.1%	79.3%
	Quintile 4	84.8%	79.8%	83.2%	81.4%	82.4%	80.3%
	Quintile 5	88.7%	84.3%	87.8%	84.8%	87.6%	85.3%

P.21 Applicants (all ages) by ethnic group

Statistic	Ethnic group	2010	2011	2012	2013	2014	2015
June deadline applicants	Asian	730	760	645	735	835	735
	Black	840	920	770	790	925	815
	Mixed	390	420	345	400	415	390
	White	13,190	13,230	11,075	11,165	11,475	10,160
	Other	90	85	90	105	115	120
Placed June deadline applicants	Asian	85	90	80	80	85	90
	Black	115	105	120	75	120	130
	Mixed	70	65	60	70	55	60
	White	2,925	2,735	2,390	2,335	2,385	2,560
	Other	15	15	25	10	15	15
All placed applicants	Asian	120	140	155	175	175	210
	Black	145	165	190	190	215	255
	Mixed	85	90	85	100	85	95
	White	3,335	3,455	3,120	3,075	3,040	3,345
	Other	20	30	35	30	25	35

P.22 Applications (all ages) by ethnic group

Statistic	Ethnic group	2010	2011	2012	2013	2014	2015
June deadline applications	Asian	805	815	690	765	870	775
	Black	890	985	830	825	965	855
	Mixed	425	470	370	425	440	405
	White	14,935	15,170	12,370	12,290	12,715	11,235
	Other	100	100	115	120	125	145
Offers	Asian	670	615	570	625	730	635
	Black	625	570	545	530	690	555
	Mixed	345	350	305	350	360	335
	White	12,275	11,800	9,975	9,610	10,260	8,825
	Other	80	75	100	95	95	105
Offer rate	Asian	82.9%	75.6%	82.2%	81.6%	83.7%	82.2%
	Black	70.4%	57.9%	65.7%	64.2%	71.5%	64.7%
	Mixed	80.7%	74.8%	82.5%	81.7%	81.6%	82.5%
	White	82.2%	77.8%	80.6%	78.2%	80.7%	78.6%
	Other	78.0%	74.7%	88.5%	79.3%	76.0%	71.0%

Technical Notes and Definitions

UCAS undergraduate scheme

Adjustment

Adjustment allows applicants who have met and exceeded the terms of their conditional firm offer to seek and find a place at another provider whilst keeping their place at their original firm choice provider.

Clearing

Clearing is a route for applicants that are not placed and holding no offers to find a place on courses with vacancies.

Cycle year

The UCAS application cycle which runs from September to October the following year. For example the 2015 cycle runs from September 2014 through to October 2015.

End of cycle

The point in the cycle to which the numbers in this report refer, and the point at which the cycle is closed such that no more applications or offers can be made, and no more applicants can be placed. Numbers reported at the end of cycle exclude information on a small number of applicants who cancelled during the cycle.

Extra

Applicants who are unsuccessful in obtaining an offer or decline all offers may be eligible to apply through Extra, where they can apply to one further course at a time. Extra operates from 25 February until early July. It provides applicants who are eligible the possibility of obtaining an offer before exam results are published and Clearing starts.

June 30 deadline

The deadline for main scheme applications. Applicants who apply after this date will go directly into Clearing.

Record of Prior Acceptance (RPA)

RPA is an acceptance route used when a provider informs UCAS of applicants it has accepted outside of the normal application process (e.g. individuals who have applied directly to the provider).

Reporting groups

Ethnic group

High level grouping of ethnic origin as declared by the applicant: 'White', 'Black', 'Asian', 'Mixed', 'Other', 'Unknown'. Applicants who declare themselves as 'Unknown' ethnic origin are not reported in these tables, but are included in the associated csv data file.

POLAR3 quintile

Developed by HEFCE, POLAR3 classifies small areas across the UK into five groups according to their level of young participation in Higher Education. Each of these groups represents around 20 per cent of young people and is ranked from Quintile 1 (areas with the lowest young participation rates, considered as the most disadvantaged) to Quintile 5 (highest young participation rates, considered most advantaged). POLAR3 is based on the participation rates of young people between 2005 and 2009 who entered Higher Education between 2005-06 and 2010-11, therefore is most suitable for applicants aged 19 and under. These groups are assigned using the postcode declared by the applicant at the time of their application. If a UK postcode is invalid, considered unsafe for measurement or there is no link to Census geography possible then the applicant is not assigned to a quintile. Applicants with no POLAR3 quintile are not reported.

Sex

Sex as declared by the applicant.

SIMD quintile

Scottish index of multiple deprivation (SIMD) for 2012 identifies small area concentrations of multiple deprivation across all of Scotland, providing a relative measure of deprivation amongst 6505 small areas (data zones) based on 7 socio-economic domains. These small areas are classified into five groups ranked from Quintile 1 (considered the most deprived) to Quintile 5 (considered least deprived), with equal populations in each quintile. Quintiles are assigned using the postcode declared by the applicant, applicants declaring invalid postcodes are classified as 'Not assigned' and are not reported.

SIMD is only defined for applicants domiciled in Scotland, therefore any applicants domiciled outside of Scotland cannot be assigned to an SIMD quintile and so are not reported for this measure.

SIMD is only reported for providers in Scotland. Application and entry rates by SIMD are reported in the 2015 End of Cycle Report and the 2016 cycle January deadline application rate report.

Statistics reported in the tables

All placed applicants

The number of applicants placed for entry into higher education at the provider through one of their choices, including any choices made through Extra, or via Adjustment, Clearing or RPA.

All placed applicants per 10,000 population

The number of total UK domiciled 18 year old placed applicants for entry into higher education at the provider divided by the number of UK 18 year olds in the population, multiplied by 10,000. This gives the number of 18 year olds, for every 10,000 in the population, that were placed at the provider through one of their choices, including any choices made through Extra, or via Adjustment, Clearing or RPA. It is an alternative way of expressing the entry rate to a provider. By referencing the underlying population this statistic shows how the number of placed applicants is changing in relation to the available pool of potential applicants and so gives the chance that somebody from the group will be placed at a provider.

This statistic is only reported for 18 year olds.

Average offer rate

The offer rate that you might expect if the predicted grades and subject choice of applicants were the only factors that influenced whether an applicant was made an offer by the provider. The average offer rate is calculated by dividing applicants according to their specific combination of grades (for A levels the best three predicted grades are used, for BTECs, International Baccalaureate and Scottish Highers and Advanced Highers, predicted grades along with any grades already achieved upon applying are used) and subject choice. For each combination the number of main scheme offers is divided by the number of main scheme applications, to give an overall offer rate. This is then multiplied by the number of applications made by the group for which the average offer rate is being calculated (for example POLAR3 quintile 1), to give an average number of offers for that group. These average number of offers are then added together across all combinations of predicted grade and subject and divided by the number of main scheme applications from the group to give the average offer rate.

The average offer rate does not attempt to control for any other factors that may play a part in the decision to make an offer, such as the subject of the qualifications studied, their relevance to a course, or the grade in each subject; higher numbers of A levels being studied; the exact profile of grades predicted; personal statements; teacher references; interviews; or any other criteria (such as work experience or portfolios) that may be part of the admissions decision.

This statistic is only reported for 18 year olds.

Contribution of group to the average offer rate

The way in which the average offer rate is defined means that the pattern of application and offers of a group (for example POLAR3 quintile 1) will always contribute, in part, to the average offer rate for that group. When this contribution is large, the average offer rate will mainly reflect the patterns for the group, meaning that the value of the average offer rate will be similar to the offer rate, the percentage point difference statistic will be small, and any real difference between the offer rate and what might be expected given the predicted grades and subject choices of the applicants will be difficult to detect.

Values of the contribution of group to the average offer rate range between 0 and 1. The closer the value is to 1 the greater the contribution a group makes to its own average offer rate.

This statistic is only reported for 18 year olds.

Placed June deadline applicants

An applicant who has been placed for entry into higher education at the provider through a June deadline application.

Placed June deadline applicants per 10,000 population

The number of UK domiciled 18 year old placed June deadline applicants at the provider divided by the number of UK 18 year olds in the population, multiplied by 10,000. This gives the number of 18 year olds, for every 10,000 in the population, that were placed at the provider through one of their June deadline applications. It is an alternative way of expressing the entry rate to a provider, but for placed June deadline applicants only. By referencing the underlying population this statistic shows how the number of placed June deadline applicants is changing in relation to the available pool of potential 18 year old applicants and so gives the chance that somebody from the group will be placed at a provider through a June deadline application.

This statistic is only reported for 18 year olds.

June deadline applications

An application (or choice) to a course in higher education to the provider that is made by the June 30 deadline. Each applicant can make up to five choices this way. The number of June deadline applications does not include choices made through the following routes: Clearing, Extra, Adjustment and RPAs. Applications made to October deadline courses received after the October deadline are not included in these statistics.

June deadline applicants

The number of applicants that made at least one application to the provider by the June 30 deadline.

June deadline applicants per 10,000 population

The number of UK domiciled 18 year old June deadline applicants to the provider divided by the number of UK 18 year olds in the population, multiplied by 10,000. This gives the number of 18 year olds, for every 10,000 in the population, who applied by the June 30 deadline. It is equivalent to the application rate. By referencing the underlying population this statistic shows how the number of June deadline applicants is changing in relation to the available pool of potential 18 year old applicants and so gives the chance that somebody from the group will apply to a provider by the June 30 deadline.

This statistic is only reported for 18 year olds.

Offers

An offer is defined as a provider's decision in response to an application to offer a place to an applicant, often subject to the applicant satisfying academic and/or other criteria, via a June deadline application (i.e. does not cover choices made through the following routes: Clearing, Extra, Adjustment and RPAs).

Offer rate

The number of offers made divided by the number of June deadline applications. This gives the proportion of all June deadline applications to the provider that received an offer.

Percentage point difference between offer rate and average offer rate

The offer rate minus the average offer rate.

The percentage point difference can be compared to the expected range of statistical variation resulting from the calculation of the average offer rate using the Average Offer Rate Lookup Table. Where the value of the percentage point difference lies outside of this range, the percentage point difference may be considered to represent a real difference between the offer rate and the average offer rate.

Other definitions

Age

This analysis uses country-specific age definitions that align with the cut off points for school and college cohorts within the different administrations of the UK. For England and Wales, ages are defined on the 31 August, for Northern Ireland on the 1 July and for Scotland on the 28 February the following year. Defining ages in this way matches the assignment of children to school cohorts. For applicants outside of the UK a cohort cut off of 31 August has been used.

Provider

A higher education provider - a university or college.

UK domiciled

Declared area of permanent residence within England, Northern Ireland, Scotland and Wales. Applicants from the Channel Islands and Isle of Man are not included.