

L28 Leeds College of Art

Cycle years: 2010 - 2015

Cycle Reference Point: End of Cycle

Applicant coverage: UK domiciled

Reporting groups: Sex, POLAR3, ethnic group

Applicant statistics: June deadline applicants, placed June deadline applicants, all placed applicants, June deadline applicants per 10,000 population, placed June deadline applicants per 10,000 population, all placed applicants per 10,000 population

Application statistics: June deadline applications, offers, offer rate, average offer rate, percentage point difference between offer rate and average offer rate, contribution of group to the average offer rate

Non-disclosure controls: To avoid the disclosure of information about any individual the following measures are taken

- Applicants, placed applicants, applications and offers are rounded to the nearest 5.
- Applicants/placed applicants per 10,000 population figures are reported as 0 if the applicant/placed applicant figures are rounded to 0.
- All statistics related to the offer rate are not reported when the number of applications for a group is less than 10. The percentage point difference between the offer rate and the average offer rate is not reported when the number of applications for a group is less than 50.
- Offer rates are reported as 0% if there are fewer than 5 offers, and 100% if the number of offers is within 5 of the number of applications. When the offer rate is reported as 0% or 100%, it is reported in italics.

Contents:

18 year old applicants:	P.1
18 year old applications:	P.2
18 year old applicants by sex:	P.3
18 year old applications by sex:	P.4
18 year old applicants by POLAR3 quintile:	P.7
18 year old applications by POLAR3 quintile:	P.8
18 year old applicants by ethnic group:	P.11
18 year old applications by ethnic group:	P.12
Applicants (all ages):	P.15
Applications (all ages):	P.16
Applicants (all ages) by sex:	P.17
Applications (all ages) by sex:	P.18
Applicants (all ages) by POLAR3 quintile:	P.19
Applications (all ages) by POLAR3 quintile:	P.20
Applicants (all ages) by ethnic group:	P.21
Applications (all ages) by ethnic group:	P.22

P.1 18 year old applicants

Statistic	2010	2011	2012	2013	2014	2015
June deadline applicants	1,005	1,025	915	925	870	1,075
Placed June deadline applicants	95	105	100	130	125	180
All placed applicants	105	110	110	130	140	190
June deadline applicants per 10,000 population	12.7	13.3	11.8	12.1	11.5	14.0
Placed June deadline applicants per 10,000	1.2	1.4	1.3	1.7	1.7	2.4
All placed applicants per 10,000 population	1.3	1.4	1.4	1.7	1.9	2.5

P.2 18 year old applications

Statistic	2010	2011	2012	2013	2014	2015
June deadline applications	1,050	1,070	950	955	895	1,120
Offers	170	200	215	250	270	370
Offer rate	16.3%	18.6%	22.8%	26.2%	30.3%	33.2%

P.3 18 year old applicants by sex

Statistic	Sex	2010	2011	2012	2013	2014	2015
June deadline applicants	Men	240	275	240	205	215	230
	Women	765	755	675	720	655	850
Placed June deadline applicants	Men	25	35	15	25	30	40
	Women	70	75	85	100	95	140
All placed applicants	Men	30	35	20	30	40	40
	Women	75	75	90	105	105	145
June deadline applicants per 10,000 population	Men	6.0	6.9	6.0	5.3	5.6	5.8
	Women	19.7	20.0	17.9	19.4	17.9	22.7
Placed June deadline applicants per 10,000 population	Men	0.6	0.8	0.4	0.7	0.8	1.0
	Women	1.8	1.9	2.3	2.8	2.5	3.7
All placed applicants per 10,000 population	Men	0.7	0.9	0.5	0.7	1.0	1.1
	Women	2.0	2.0	2.4	2.8	2.8	3.9

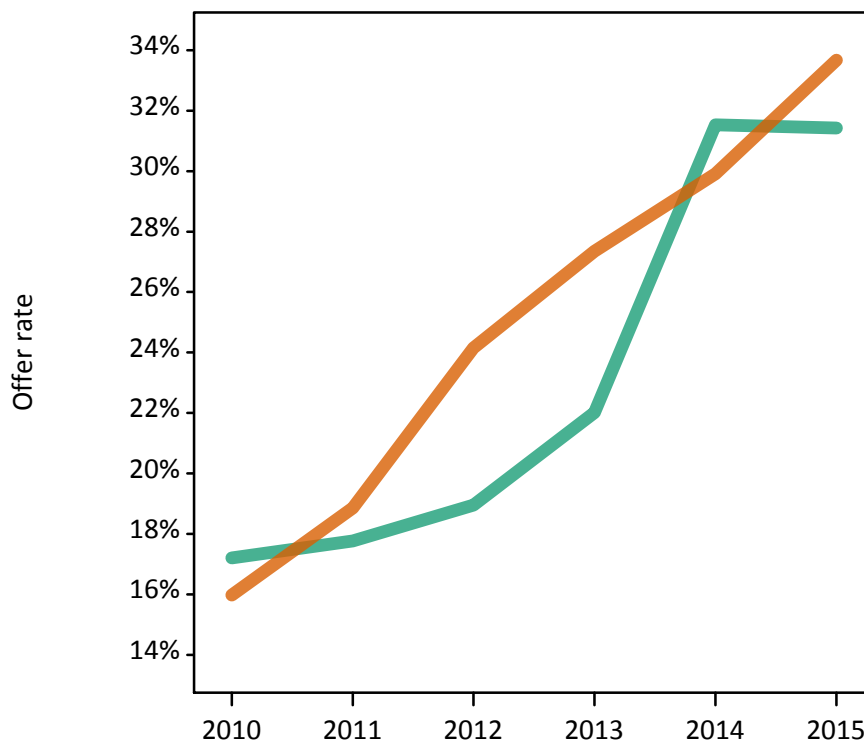
P.4 18 year old applications by sex

Statistic	Sex	2010	2011	2012	2013	2014	2015
June deadline applications	Men	250	285	250	210	220	245
	Women	800	785	705	745	670	875
Offers	Men	45	50	45	45	70	75
	Women	130	150	170	205	200	295
Offer rate	Men	17.2%	17.8%	19.0%	22.0%	31.5%	31.4%
	Women	16.0%	18.9%	24.1%	27.3%	29.9%	33.7%
Average offer rate	Men	18.4%	19.7%	23.2%	24.0%	29.1%	33.4%
	Women	15.6%	18.1%	22.7%	26.8%	30.7%	33.1%
Percentage point difference between offer rate and average offer rate	Men	-1.2	-1.9	-4.2	-2.0	2.4	-1.9
	Women	0.4	0.7	1.5	0.6	-0.8	0.5
Contribution of group to the average offer rate	Men	0.351	0.362	0.351	0.272	0.313	0.267
	Women	0.797	0.767	0.772	0.796	0.773	0.795

P.5 18 year old offer rate by sex

Note: The line for a group is not plotted when that group made fewer than 10 applications in any of the years from 2010-2015.

Men
Women



P.6 Percentage point difference between 18 year old offer rate and average offer rate by sex

Note: The line for a group is not plotted when that group made fewer than 50 applications in any of the years from 2010-2015.

Men
Women



P.7 18 year old applicants by POLAR3 quintile

Statistic	POLAR3 quintile	2010	2011	2012	2013	2014	2015
June deadline applicants	Quintile 1	140	150	150	135	160	160
	Quintile 2	185	180	165	185	160	210
	Quintile 3	195	205	180	185	185	220
	Quintile 4	210	225	180	195	170	235
	Quintile 5	270	265	230	220	190	250
Placed June deadline applicants	Quintile 1	10	10	15	20	20	20
	Quintile 2	5	15	20	25	20	30
	Quintile 3	20	25	15	25	30	45
	Quintile 4	20	20	20	30	15	40
	Quintile 5	35	35	30	25	35	45
All placed applicants	Quintile 1	15	10	15	20	25	20
	Quintile 2	10	15	20	30	25	30
	Quintile 3	20	25	20	25	40	50
	Quintile 4	25	20	20	30	15	40
	Quintile 5	35	35	30	25	40	45
June deadline applicants per 10,000 population	Quintile 1	9.5	10.4	10.5	9.8	11.5	11.5
	Quintile 2	12.0	11.8	11.1	12.6	10.9	14.0
	Quintile 3	12.4	13.4	11.6	12.1	12.4	14.3
	Quintile 4	13.3	14.2	11.4	12.6	10.9	14.9
	Quintile 5	15.8	16.0	13.8	13.3	11.8	15.1
Placed June deadline applicants per 10,000 population	Quintile 1	0.8	0.8	1.1	1.4	1.6	1.4
	Quintile 2	0.5	1.0	1.3	1.8	1.4	2.0
	Quintile 3	1.3	1.6	1.0	1.6	2.1	3.0
	Quintile 4	1.3	1.4	1.2	2.0	1.0	2.5
	Quintile 5	2.0	2.0	1.8	1.5	2.1	2.7
All placed applicants per 10,000 population	Quintile 1	0.9	0.8	1.2	1.4	1.7	1.6
	Quintile 2	0.6	1.1	1.4	1.9	1.7	2.0
	Quintile 3	1.4	1.7	1.3	1.7	2.5	3.1
	Quintile 4	1.4	1.4	1.3	2.0	1.1	2.6
	Quintile 5	2.1	2.1	1.8	1.5	2.3	2.7

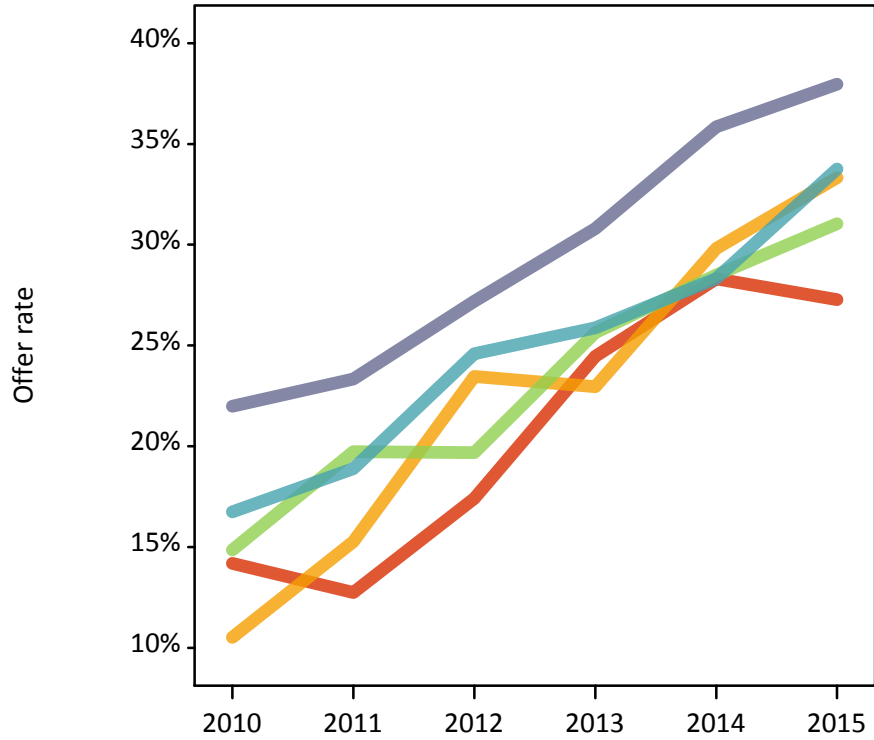
P.8 18 year old applications by POLAR3 quintile

Statistic	POLAR3 quintile	2010	2011	2012	2013	2014	2015
June deadline applications	Quintile 1	150	155	155	140	165	165
	Quintile 2	190	190	180	195	160	215
	Quintile 3	200	220	190	195	195	230
	Quintile 4	225	235	185	200	175	240
	Quintile 5	280	270	240	225	200	265
Offers	Quintile 1	20	20	25	35	45	45
	Quintile 2	20	30	40	45	50	70
	Quintile 3	30	45	35	50	55	70
	Quintile 4	40	45	45	50	50	80
	Quintile 5	60	65	65	70	70	100
Offer rate	Quintile 1	14.2%	12.7%	17.4%	24.5%	28.3%	27.3%
	Quintile 2	10.5%	15.3%	23.5%	23.0%	29.8%	33.3%
	Quintile 3	14.9%	19.7%	19.7%	25.6%	28.5%	31.0%
	Quintile 4	16.7%	18.9%	24.6%	25.9%	28.3%	33.8%
	Quintile 5	22.0%	23.3%	27.2%	30.8%	35.9%	38.0%
Average offer rate	Quintile 1	15.5%	16.4%	20.1%	22.5%	29.2%	31.4%
	Quintile 2	14.6%	16.3%	24.0%	24.7%	29.9%	31.6%
	Quintile 3	16.3%	19.0%	22.4%	26.2%	28.5%	33.0%
	Quintile 4	17.1%	19.5%	24.6%	26.9%	31.3%	34.7%
	Quintile 5	17.2%	20.4%	22.8%	29.2%	32.4%	34.3%
Percentage point difference between offer rate and average offer rate	Quintile 1	-1.3	-3.7	-2.7	2.0	-0.8	-4.1
	Quintile 2	-4.1	-1.1	-0.6	-1.7	-0.1	1.7
	Quintile 3	-1.4	0.7	-2.8	-0.5	-0.0	-1.9
	Quintile 4	-0.4	-0.6	-0.0	-1.0	-3.0	-0.9
	Quintile 5	4.8	2.9	4.4	1.6	3.5	3.7
Contribution of group to the average offer rate	Quintile 1	0.228	0.223	0.239	0.209	0.242	0.194
	Quintile 2	0.261	0.253	0.266	0.263	0.222	0.234
	Quintile 3	0.256	0.278	0.263	0.247	0.280	0.253
	Quintile 4	0.308	0.289	0.266	0.268	0.252	0.267
	Quintile 5	0.357	0.348	0.330	0.304	0.296	0.299

P.9 18 year old offer rate by POLAR3 quintile

Note: The line for a group is not plotted when that group made fewer than 10 applications in any of the years from 2010-2015.

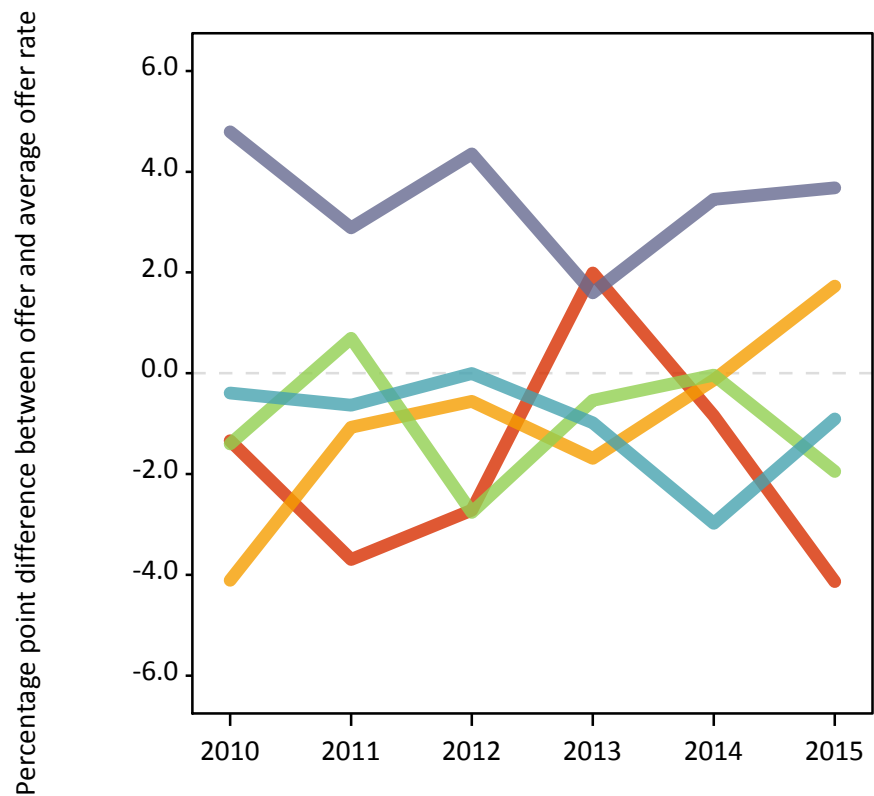
- Quintile 1
- Quintile 2
- Quintile 3
- Quintile 4
- Quintile 5



P.10 Percentage point difference between 18 year old offer rate and average offer rate by POLAR3 quintile

Note: The line for a group is not plotted when that group made fewer than 50 applications in any of the years from 2010-2015.

- Quintile 1
- Quintile 2
- Quintile 3
- Quintile 4
- Quintile 5



P.11 18 year old applicants by ethnic group

Statistic	Ethnic group	2010	2011	2012	2013	2014	2015
June deadline applicants	Asian	35	30	35	40	35	35
	Black	5	15	10	10	15	15
	Mixed	40	40	30	25	30	35
	White	920	935	835	845	785	975
	Other	0	5	5	5	5	10
Placed June deadline applicants	Asian	0	5	5	0	0	10
	Black	5	0	0	0	0	0
	Mixed	5	5	0	5	5	5
	White	85	95	95	125	115	165
	Other	0	0	0	0	0	0
All placed applicants	Asian	0	5	5	0	0	10
	Black	5	0	0	0	0	0
	Mixed	5	5	0	5	5	5
	White	95	100	100	125	130	170
	Other	0	0	0	0	0	0
June deadline applicants per 10,000 population	Asian	5.8	5.1	5.4	6.1	5.5	5.2
	Black	2.3	4.8	3.2	3.7	4.3	5.0
	Mixed	17.3	16.9	11.9	8.5	10.8	11.4
	White	13.7	14.4	12.9	13.4	12.7	15.6
	Other	0.0	3.7	3.4	4.4	3.2	9.3
Placed June deadline applicants per 10,000 population	Asian	0.0	0.5	0.6	0.0	0.0	1.4
	Black	1.1	0.0	0.0	0.0	0.0	0.0
	Mixed	2.2	1.7	0.0	1.1	1.7	1.0
	White	1.3	1.5	1.5	2.0	1.9	2.6
	Other	0.0	0.0	0.0	0.0	0.0	0.0
All placed applicants per 10,000 population	Asian	0.0	0.5	0.6	0.0	0.0	1.4
	Black	1.1	0.0	0.0	0.0	0.0	0.0
	Mixed	2.6	2.1	0.0	1.5	2.4	1.0
	White	1.4	1.5	1.6	2.0	2.1	2.8
	Other	0.0	0.0	0.0	0.0	0.0	0.0

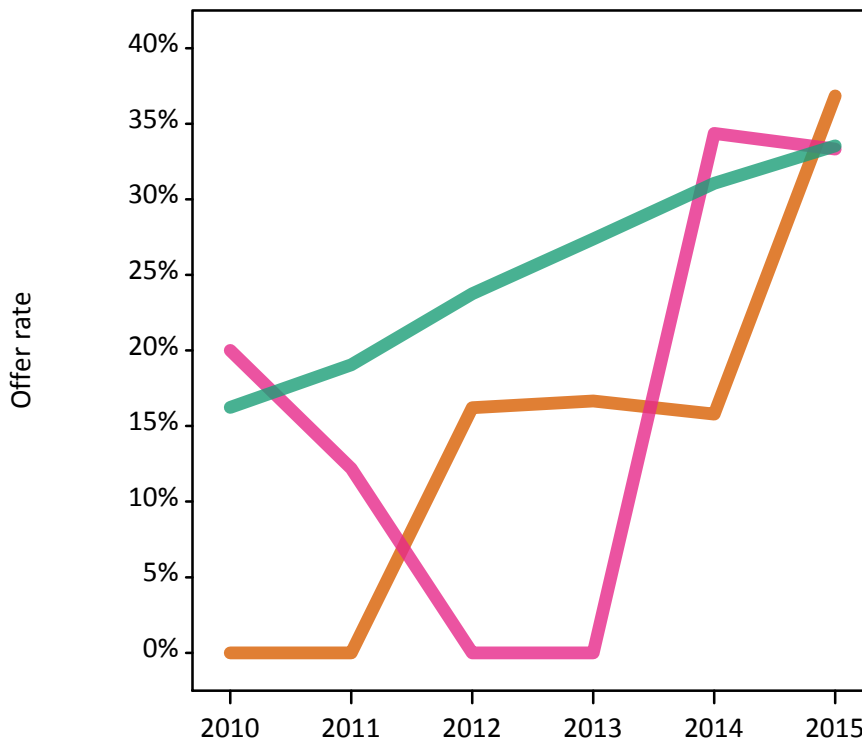
P.12 18 year old applications by ethnic group

Statistic	Ethnic group	2010	2011	2012	2013	2014	2015
June deadline applications	Asian	35	35	35	40	40	40
	Black	5	15	10	15	15	15
	Mixed	40	40	35	25	30	35
	White	965	975	865	875	810	1,015
	Other	0	5	5	5	5	10
Offers	Asian	5	5	5	5	5	15
	Black	5	5	0	0	5	0
	Mixed	10	5	5	5	10	10
	White	155	185	205	240	250	340
	Other	0	0	0	0	0	5
Offer rate	Asian	0.0%	0.0%	16.2%	16.7%	15.8%	36.8%
	Black	N/A	0.0%	0.0%	0.0%	0.0%	0.0%
	Mixed	20.0%	12.2%	0.0%	0.0%	34.4%	33.3%
	White	16.2%	19.1%	23.8%	27.4%	31.1%	33.5%
	Other	N/A	N/A	N/A	N/A	N/A	N/A
Average offer rate	Asian	14.2%	17.9%	20.4%	19.3%	24.1%	30.0%
	Black	N/A	22.9%	21.1%	13.0%	25.3%	29.9%
	Mixed	15.1%	18.2%	22.0%	23.9%	30.4%	36.6%
	White	16.4%	18.6%	22.9%	26.8%	30.7%	33.2%
	Other	N/A	N/A	N/A	N/A	N/A	N/A
Percentage point difference between offer rate and average offer rate	Asian	N/A	N/A	N/A	N/A	N/A	N/A
	Black	N/A	N/A	N/A	N/A	N/A	N/A
	Mixed	N/A	N/A	N/A	N/A	N/A	N/A
	White	-0.1	0.5	0.8	0.6	0.4	0.3
	Other	N/A	N/A	N/A	N/A	N/A	N/A
Contribution of group to the average offer rate	Asian	0.090	0.130	0.175	0.115	0.139	0.063
	Black	N/A	0.131	0.123	0.065	0.095	0.052
	Mixed	0.140	0.152	0.105	0.097	0.136	0.085
	White	0.926	0.920	0.920	0.922	0.912	0.912
	Other	N/A	N/A	N/A	N/A	N/A	N/A

P.13 18 year old offer rate by ethnic group

Note: The line for a group is not plotted when that group made fewer than 10 applications in any of the years from 2010-2015.

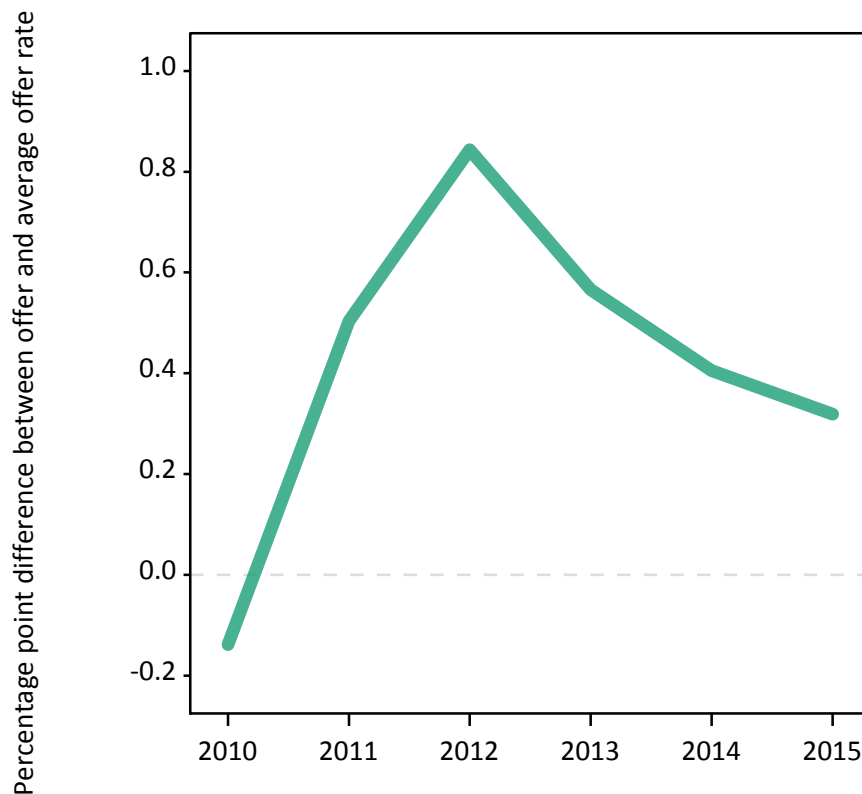
- Asian
- Black
- Mixed
- White
- Other



P.14 Percentage point difference between 18 year old offer rate and average offer rate by ethnic group

Note: The line for a group is not plotted when that group made fewer than 50 applications in any of the years from 2010-2015.

- Asian
- Black
- Mixed
- White
- Other



P.15 Applicants (all ages)

Statistic	2010	2011	2012	2013	2014	2015
June deadline applicants	2,740	2,820	2,275	2,470	2,375	2,765
Placed June deadline applicants	340	365	355	400	395	505
All placed applicants	370	390	390	410	430	525

P.16 Applications (all ages)

Statistic	2010	2011	2012	2013	2014	2015
June deadline applications	2,880	2,955	2,375	2,570	2,455	2,870
Offers	560	635	650	735	855	1,085
Offer rate	19.5%	21.5%	27.4%	28.6%	34.7%	37.8%

P.17 Applicants (all ages) by sex

Statistic	Sex	2010	2011	2012	2013	2014	2015
June deadline applicants	Men	810	840	635	680	645	670
	Women	1,930	1,980	1,640	1,790	1,730	2,095
Placed June deadline applicants	Men	110	115	90	115	90	120
	Women	230	255	270	290	300	380
All placed applicants	Men	125	125	100	115	110	130
	Women	245	265	290	295	320	395

P.18 Applications (all ages) by sex

Statistic	Sex	2010	2011	2012	2013	2014	2015
June deadline applications	Men	855	900	675	705	665	695
	Women	2,025	2,055	1,700	1,865	1,790	2,175
Offers	Men	155	170	165	175	220	235
	Women	405	470	485	560	635	850
Offer rate	Men	18.3%	18.7%	24.5%	24.8%	32.8%	34.1%
	Women	19.9%	22.8%	28.6%	30.1%	35.4%	39.0%

P.19 Applicants (all ages) by POLAR3 quintile

Statistic	POLAR3 quintile	2010	2011	2012	2013	2014	2015
June deadline applicants	Quintile 1	355	420	375	385	415	395
	Quintile 2	475	475	395	450	420	490
	Quintile 3	525	535	425	500	460	550
	Quintile 4	615	610	465	535	475	640
	Quintile 5	765	770	605	595	595	685
Placed June deadline applicants	Quintile 1	35	45	50	65	60	55
	Quintile 2	55	55	60	60	65	80
	Quintile 3	65	65	50	85	80	105
	Quintile 4	70	80	80	90	80	110
	Quintile 5	115	125	110	100	110	150
All placed applicants	Quintile 1	40	45	55	65	65	55
	Quintile 2	60	60	65	65	75	85
	Quintile 3	70	70	60	90	90	110
	Quintile 4	75	85	90	90	80	115
	Quintile 5	130	130	120	100	120	160

P.20 Applications (all ages) by POLAR3 quintile

Statistic	POLAR3 quintile	2010	2011	2012	2013	2014	2015
June deadline applications	Quintile 1	380	435	395	400	430	405
	Quintile 2	495	505	420	475	430	505
	Quintile 3	545	565	440	525	480	575
	Quintile 4	645	635	480	550	495	670
	Quintile 5	810	805	630	615	615	710
Offers	Quintile 1	55	65	80	100	130	115
	Quintile 2	85	85	110	105	135	180
	Quintile 3	100	120	95	145	155	200
	Quintile 4	120	140	160	165	180	255
	Quintile 5	195	225	205	215	250	330
Offer rate	Quintile 1	14.6%	15.4%	20.3%	25.5%	30.7%	29.0%
	Quintile 2	17.6%	16.7%	25.9%	22.2%	31.4%	35.2%
	Quintile 3	18.8%	21.0%	21.3%	28.1%	32.5%	34.8%
	Quintile 4	18.9%	22.2%	33.1%	30.1%	36.1%	38.0%
	Quintile 5	23.9%	28.0%	32.9%	35.0%	40.7%	46.7%

P.21 Applicants (all ages) by ethnic group

Statistic	Ethnic group	2010	2011	2012	2013	2014	2015
June deadline applicants	Asian	95	105	95	100	85	95
	Black	35	45	35	35	40	60
	Mixed	105	125	85	70	95	115
	White	2,480	2,530	2,040	2,245	2,140	2,455
	Other	10	10	20	10	5	15
Placed June deadline applicants	Asian	5	10	15	15	10	20
	Black	5	5	5	5	5	10
	Mixed	15	15	10	10	15	10
	White	315	335	325	370	360	455
	Other	0	0	0	0	0	5
All placed applicants	Asian	5	10	15	15	15	20
	Black	5	10	5	5	10	10
	Mixed	15	15	10	10	15	15
	White	340	350	355	375	390	475
	Other	0	0	0	0	0	5

P.22 Applications (all ages) by ethnic group

Statistic	Ethnic group	2010	2011	2012	2013	2014	2015
June deadline applications	Asian	100	115	95	105	90	100
	Black	40	45	35	40	40	60
	Mixed	110	130	90	75	100	120
	White	2,610	2,645	2,130	2,330	2,210	2,550
	Other	10	10	20	10	10	15
Offers	Asian	15	15	20	30	25	40
	Black	5	10	5	5	10	15
	Mixed	20	20	20	15	35	45
	White	520	585	605	680	780	975
	Other	0	5	5	5	0	5
Offer rate	Asian	13.1%	12.3%	19.6%	28.2%	28.1%	37.6%
	Black	0.0%	18.6%	16.7%	0.0%	26.8%	23.0%
	Mixed	18.3%	17.2%	21.6%	19.5%	35.0%	36.9%
	White	19.9%	22.2%	28.3%	29.2%	35.2%	38.3%
	Other	0.0%	0.0%	0.0%	0.0%	N/A	35.3%

Technical Notes and Definitions

UCAS undergraduate scheme

Adjustment

Adjustment allows applicants who have met and exceeded the terms of their conditional firm offer to seek and find a place at another provider whilst keeping their place at their original firm choice provider.

Clearing

Clearing is a route for applicants that are not placed and holding no offers to find a place on courses with vacancies.

Cycle year

The UCAS application cycle which runs from September to October the following year. For example the 2015 cycle runs from September 2014 through to October 2015.

End of cycle

The point in the cycle to which the numbers in this report refer, and the point at which the cycle is closed such that no more applications or offers can be made, and no more applicants can be placed. Numbers reported at the end of cycle exclude information on a small number of applicants who cancelled during the cycle.

Extra

Applicants who are unsuccessful in obtaining an offer or decline all offers may be eligible to apply through Extra, where they can apply to one further course at a time. Extra operates from 25 February until early July. It provides applicants who are eligible the possibility of obtaining an offer before exam results are published and Clearing starts.

June 30 deadline

The deadline for main scheme applications. Applicants who apply after this date will go directly into Clearing.

Record of Prior Acceptance (RPA)

RPA is an acceptance route used when a provider informs UCAS of applicants it has accepted outside of the normal application process (e.g. individuals who have applied directly to the provider).

Reporting groups

Ethnic group

High level grouping of ethnic origin as declared by the applicant: 'White', 'Black', 'Asian', 'Mixed', 'Other', 'Unknown'. Applicants who declare themselves as 'Unknown' ethnic origin are not reported in these tables, but are included in the associated csv data file.

POLAR3 quintile

Developed by HEFCE, POLAR3 classifies small areas across the UK into five groups according to their level of young participation in Higher Education. Each of these groups represents around 20 per cent of young people and is ranked from Quintile 1 (areas with the lowest young participation rates, considered as the most disadvantaged) to Quintile 5 (highest young participation rates, considered most advantaged). POLAR3 is based on the participation rates of young people between 2005 and 2009 who entered Higher Education between 2005-06 and 2010-11, therefore is most suitable for applicants aged 19 and under. These groups are assigned using the postcode declared by the applicant at the time of their application. If a UK postcode is invalid, considered unsafe for measurement or there is no link to Census geography possible then the applicant is not assigned to a quintile. Applicants with no POLAR3 quintile are not reported.

Sex

Sex as declared by the applicant.

SIMD quintile

Scottish index of multiple deprivation (SIMD) for 2012 identifies small area concentrations of multiple deprivation across all of Scotland, providing a relative measure of deprivation amongst 6505 small areas (data zones) based on 7 socio-economic domains. These small areas are classified into five groups ranked from Quintile 1 (considered the most deprived) to Quintile 5 (considered least deprived), with equal populations in each quintile. Quintiles are assigned using the postcode declared by the applicant, applicants declaring invalid postcodes are classified as 'Not assigned' and are not reported.

SIMD is only defined for applicants domiciled in Scotland, therefore any applicants domiciled outside of Scotland cannot be assigned to an SIMD quintile and so are not reported for this measure.

SIMD is only reported for providers in Scotland. Application and entry rates by SIMD are reported in the 2015 End of Cycle Report and the 2016 cycle January deadline application rate report.

Statistics reported in the tables

All placed applicants

The number of applicants placed for entry into higher education at the provider through one of their choices, including any choices made through Extra, or via Adjustment, Clearing or RPA.

All placed applicants per 10,000 population

The number of total UK domiciled 18 year old placed applicants for entry into higher education at the provider divided by the number of UK 18 year olds in the population, multiplied by 10,000. This gives the number of 18 year olds, for every 10,000 in the population, that were placed at the provider through one of their choices, including any choices made through Extra, or via Adjustment, Clearing or RPA. It is an alternative way of expressing the entry rate to a provider. By referencing the underlying population this statistic shows how the number of placed applicants is changing in relation to the available pool of potential applicants and so gives the chance that somebody from the group will be placed at a provider.

This statistic is only reported for 18 year olds.

Average offer rate

The offer rate that you might expect if the predicted grades and subject choice of applicants were the only factors that influenced whether an applicant was made an offer by the provider. The average offer rate is calculated by dividing applicants according to their specific combination of grades (for A levels the best three predicted grades are used, for BTECs, International Baccalaureate and Scottish Highers and Advanced Highers, predicted grades along with any grades already achieved upon applying are used) and subject choice. For each combination the number of main scheme offers is divided by the number of main scheme applications, to give an overall offer rate. This is then multiplied by the number of applications made by the group for which the average offer rate is being calculated (for example POLAR3 quintile 1), to give an average number of offers for that group. These average number of offers are then added together across all combinations of predicted grade and subject and divided by the number of main scheme applications from the group to give the average offer rate.

The average offer rate does not attempt to control for any other factors that may play a part in the decision to make an offer, such as the subject of the qualifications studied, their relevance to a course, or the grade in each subject; higher numbers of A levels being studied; the exact profile of grades predicted; personal statements; teacher references; interviews; or any other criteria (such as work experience or portfolios) that may be part of the admissions decision.

This statistic is only reported for 18 year olds.

Contribution of group to the average offer rate

The way in which the average offer rate is defined means that the pattern of application and offers of a group (for example POLAR3 quintile 1) will always contribute, in part, to the average offer rate for that group. When this contribution is large, the average offer rate will mainly reflect the patterns for the group, meaning that the value of the average offer rate will be similar to the offer rate, the percentage point difference statistic will be small, and any real difference between the offer rate and what might be expected given the predicted grades and subject choices of the applicants will be difficult to detect.

Values of the contribution of group to the average offer rate range between 0 and 1. The closer the value is to 1 the greater the contribution a group makes to its own average offer rate.

This statistic is only reported for 18 year olds.

Placed June deadline applicants

An applicant who has been placed for entry into higher education at the provider through a June deadline application.

Placed June deadline applicants per 10,000 population

The number of UK domiciled 18 year old placed June deadline applicants at the provider divided by the number of UK 18 year olds in the population, multiplied by 10,000. This gives the number of 18 year olds, for every 10,000 in the population, that were placed at the provider through one of their June deadline applications. It is an alternative way of expressing the entry rate to a provider, but for placed June deadline applicants only. By referencing the underlying population this statistic shows how the number of placed June deadline applicants is changing in relation to the available pool of potential 18 year old applicants and so gives the chance that somebody from the group will be placed at a provider through a June deadline application.

This statistic is only reported for 18 year olds.

June deadline applications

An application (or choice) to a course in higher education to the provider that is made by the June 30 deadline. Each applicant can make up to five choices this way. The number of June deadline applications does not include choices made through the following routes: Clearing, Extra, Adjustment and RPAs. Applications made to October deadline courses received after the October deadline are not included in these statistics.

June deadline applicants

The number of applicants that made at least one application to the provider by the June 30 deadline.

June deadline applicants per 10,000 population

The number of UK domiciled 18 year old June deadline applicants to the provider divided by the number of UK 18 year olds in the population, multiplied by 10,000. This gives the number of 18 year olds, for every 10,000 in the population, who applied by the June 30 deadline. It is equivalent to the application rate. By referencing the underlying population this statistic shows how the number of June deadline applicants is changing in relation to the available pool of potential 18 year old applicants and so gives the chance that somebody from the group will apply to a provider by the June 30 deadline.

This statistic is only reported for 18 year olds.

Offers

An offer is defined as a provider's decision in response to an application to offer a place to an applicant, often subject to the applicant satisfying academic and/or other criteria, via a June deadline application (i.e. does not cover choices made through the following routes: Clearing, Extra, Adjustment and RPAs).

Offer rate

The number of offers made divided by the number of June deadline applications. This gives the proportion of all June deadline applications to the provider that received an offer.

Percentage point difference between offer rate and average offer rate

The offer rate minus the average offer rate.

The percentage point difference can be compared to the expected range of statistical variation resulting from the calculation of the average offer rate using the Average Offer Rate Lookup Table. Where the value of the percentage point difference lies outside of this range, the percentage point difference may be considered to represent a real difference between the offer rate and the average offer rate.

Other definitions

Age

This analysis uses country-specific age definitions that align with the cut off points for school and college cohorts within the different administrations of the UK. For England and Wales, ages are defined on the 31 August, for Northern Ireland on the 1 July and for Scotland on the 28 February the following year. Defining ages in this way matches the assignment of children to school cohorts. For applicants outside of the UK a cohort cut off of 31 August has been used.

Provider

A higher education provider - a university or college.

UK domiciled

Declared area of permanent residence within England, Northern Ireland, Scotland and Wales. Applicants from the Channel Islands and Isle of Man are not included.