

L41 The University of Liverpool

Cycle years: 2010 - 2015

Cycle Reference Point: End of Cycle

Applicant coverage: UK domiciled

Reporting groups: Sex, POLAR3, ethnic group

Applicant statistics: June deadline applicants, placed June deadline applicants, all placed applicants, June deadline applicants per 10,000 population, placed June deadline applicants per 10,000 population, all placed applicants per 10,000 population

Application statistics: June deadline applications, offers, offer rate, average offer rate, percentage point difference between offer rate and average offer rate, contribution of group to the average offer rate

Non-disclosure controls: To avoid the disclosure of information about any individual the following measures are taken

- Applicants, placed applicants, applications and offers are rounded to the nearest 5.
- Applicants/placed applicants per 10,000 population figures are reported as 0 if the applicant/placed applicant figures are rounded to 0.
- All statistics related to the offer rate are not reported when the number of applications for a group is less than 10. The percentage point difference between the offer rate and the average offer rate is not reported when the number of applications for a group is less than 50.
- Offer rates are reported as 0% if there are fewer than 5 offers, and 100% if the number of offers is within 5 of the number of applications. When the offer rate is reported as 0% or 100%, it is reported in italics.

Contents:

18 year old applicants: P.1
18 year old applications: P.2
18 year old applicants by sex: P.3
18 year old applications by sex: P.4
18 year old applicants by POLAR3 quintile: P.7
18 year old applications by POLAR3 quintile: P.8
18 year old applicants by ethnic group: P.11
18 year old applications by ethnic group: P.12
Applicants (all ages): P.15
Applications (all ages): P.16
Applicants (all ages) by sex: P.17
Applications (all ages) by sex: P.18
Applicants (all ages) by POLAR3 quintile: P.19
Applications (all ages) by POLAR3 quintile: P.20
Applicants (all ages) by ethnic group: P.21
Applications (all ages) by ethnic group: P.22

P.1 18 year old applicants

Statistic	2010	2011	2012	2013	2014	2015
June deadline applicants	15,770	17,055	15,570	17,520	18,330	22,840
Placed June deadline applicants	2,165	2,220	1,990	2,310	2,615	3,165
All placed applicants	2,530	2,410	2,355	2,500	2,840	3,465
June deadline applicants per 10,000 population	199.7	221.5	201.3	230.3	243.4	298.1
Placed June deadline applicants per 10,000	27.4	28.8	25.7	30.3	34.7	41.3
All placed applicants per 10,000 population	32.0	31.3	30.4	32.8	37.7	45.2

P.2 18 year old applications

Statistic	2010	2011	2012	2013	2014	2015
June deadline applications	16,900	18,305	16,575	18,360	19,225	23,845
Offers	13,020	13,935	12,135	14,890	15,990	19,810
Offer rate	77.0%	76.1%	73.2%	81.1%	83.2%	83.1%

P.3 18 year old applicants by sex

Statistic	Sex	2010	2011	2012	2013	2014	2015
June deadline applicants	Men	7,300	7,815	6,960	7,890	7,590	9,600
	Women	8,470	9,240	8,615	9,630	10,740	13,240
Placed June deadline applicants	Men	980	945	860	1,060	1,020	1,275
	Women	1,185	1,275	1,130	1,250	1,595	1,885
All placed applicants	Men	1,145	1,020	1,005	1,135	1,110	1,395
	Women	1,385	1,390	1,350	1,365	1,730	2,070
June deadline applicants per 10,000 population	Men	181.7	198.6	175.5	202.1	196.0	244.6
	Women	218.4	245.4	228.5	259.9	293.4	354.3
Placed June deadline applicants per 10,000 population	Men	24.4	24.1	21.7	27.1	26.3	32.5
	Women	30.5	33.8	29.9	33.7	43.5	50.5
All placed applicants per 10,000 population	Men	28.5	25.9	25.4	29.0	28.6	35.5
	Women	35.7	36.9	35.8	36.8	47.3	55.4

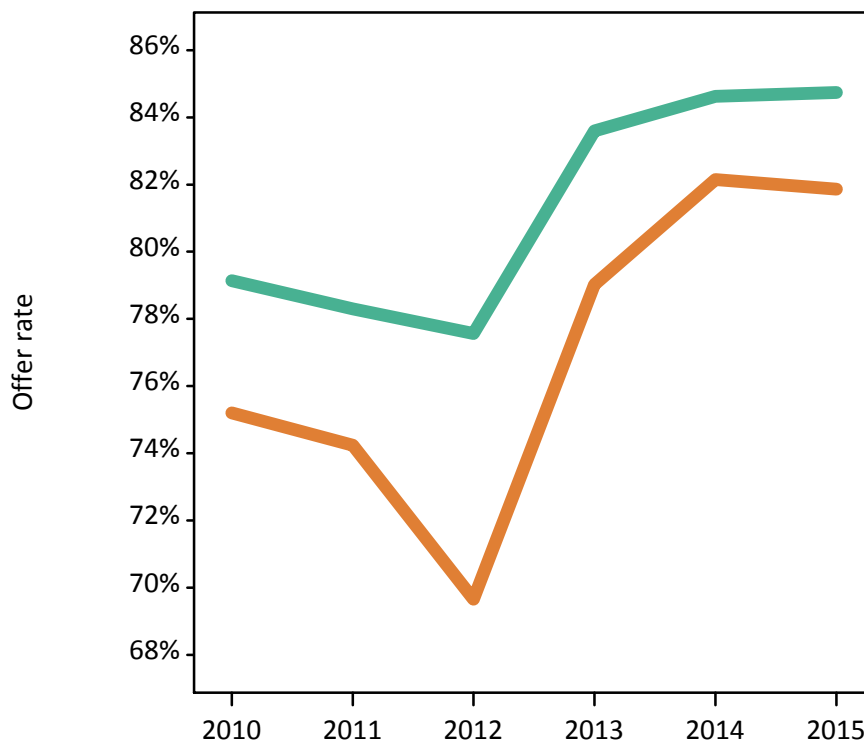
P.4 18 year old applications by sex

Statistic	Sex	2010	2011	2012	2013	2014	2015
June deadline applications	Men	7,930	8,445	7,460	8,360	8,040	10,105
	Women	8,970	9,860	9,115	10,000	11,185	13,740
Offers	Men	6,275	6,610	5,785	6,990	6,805	8,560
	Women	6,745	7,320	6,350	7,905	9,185	11,250
Offer rate	Men	79.1%	78.3%	77.6%	83.6%	84.6%	84.7%
	Women	75.2%	74.2%	69.7%	79.0%	82.2%	81.9%
Average offer rate	Men	79.7%	79.3%	78.3%	84.3%	85.5%	85.2%
	Women	74.7%	73.4%	69.1%	78.5%	81.5%	81.6%
Percentage point difference between offer rate and average offer rate	Men	-0.5	-1.0	-0.7	-0.7	-0.8	-0.4
	Women	0.5	0.9	0.6	0.6	0.6	0.3
Contribution of group to the average offer rate	Men	0.594	0.587	0.589	0.584	0.552	0.544
	Women	0.641	0.647	0.663	0.652	0.678	0.665

P.5 18 year old offer rate by sex

Note: The line for a group is not plotted when that group made fewer than 10 applications in any of the years from 2010-2015.

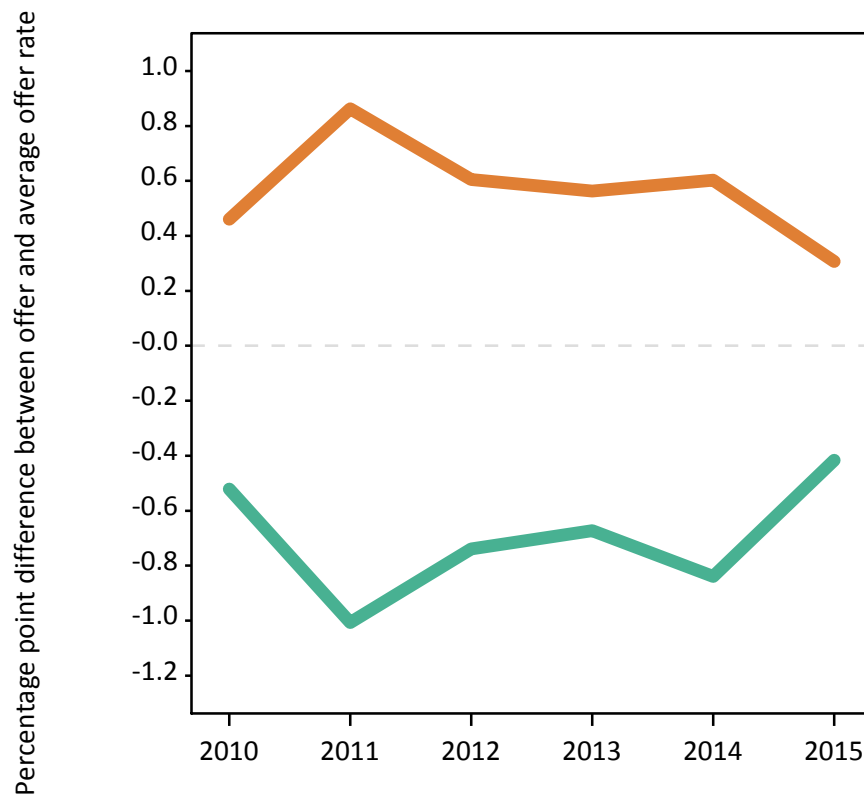
Men
Women



P.6 Percentage point difference between 18 year old offer rate and average offer rate by sex

Note: The line for a group is not plotted when that group made fewer than 50 applications in any of the years from 2010-2015.

Men
Women



P.7 18 year old applicants by POLAR3 quintile

Statistic	POLAR3 quintile	2010	2011	2012	2013	2014	2015
June deadline applicants	Quintile 1	1,390	1,470	1,360	1,550	1,730	2,170
	Quintile 2	2,070	2,175	2,055	2,435	2,480	3,180
	Quintile 3	2,660	2,860	2,615	2,990	3,195	3,930
	Quintile 4	3,990	4,205	3,860	4,280	4,385	5,495
	Quintile 5	5,645	6,315	5,660	6,250	6,520	8,020
Placed June deadline applicants	Quintile 1	210	195	175	205	255	275
	Quintile 2	290	285	265	350	360	450
	Quintile 3	340	360	310	355	460	530
	Quintile 4	575	555	510	610	640	820
	Quintile 5	750	820	725	790	895	1,080
All placed applicants	Quintile 1	230	205	200	215	275	310
	Quintile 2	330	300	310	380	390	480
	Quintile 3	390	390	360	390	495	585
	Quintile 4	670	600	605	655	695	895
	Quintile 5	915	905	875	860	980	1,195
June deadline applicants per 10,000 population	Quintile 1	93.8	102.3	95.3	111.1	124.3	155.0
	Quintile 2	134.8	144.7	137.1	165.3	169.4	214.2
	Quintile 3	167.1	185.8	169.4	196.0	212.3	256.1
	Quintile 4	250.5	268.4	243.2	273.7	284.5	351.0
	Quintile 5	333.0	381.5	336.8	377.9	399.7	479.2
Placed June deadline applicants per 10,000 population	Quintile 1	14.3	13.6	12.4	14.6	18.4	19.7
	Quintile 2	18.9	18.9	17.6	23.9	24.7	30.3
	Quintile 3	21.3	23.5	20.1	23.2	30.6	34.6
	Quintile 4	36.2	35.6	32.1	39.1	41.6	52.5
	Quintile 5	44.3	49.5	43.1	47.7	54.9	64.5
All placed applicants per 10,000 population	Quintile 1	15.5	14.3	14.2	15.4	19.8	22.1
	Quintile 2	21.4	20.1	20.7	25.8	26.6	32.3
	Quintile 3	24.4	25.4	23.2	25.5	33.0	38.0
	Quintile 4	42.0	38.4	38.3	41.9	45.1	57.2
	Quintile 5	53.9	54.6	52.0	51.9	60.2	71.4

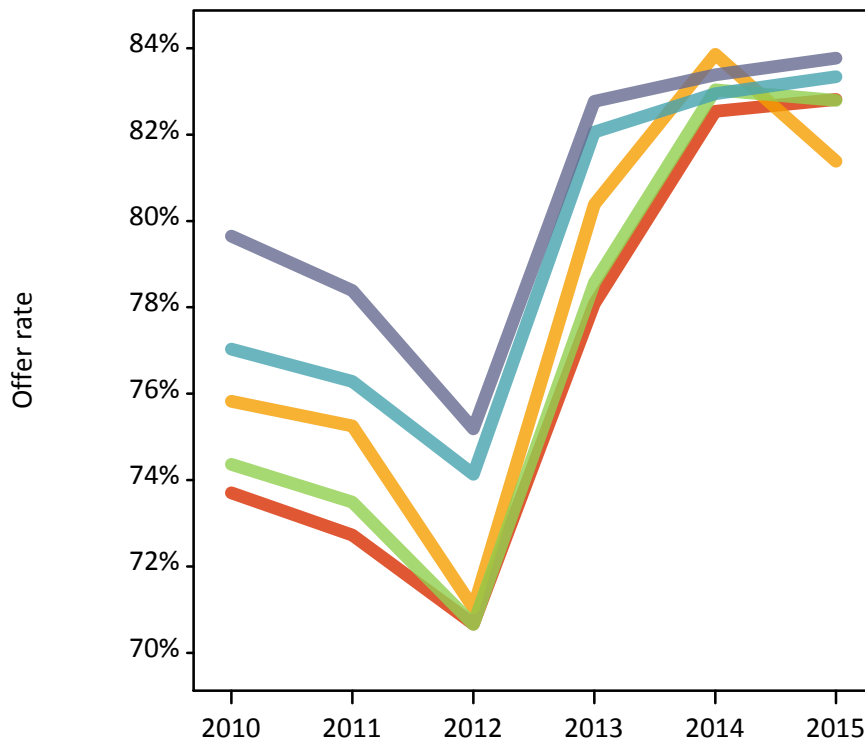
P.8 18 year old applications by POLAR3 quintile

Statistic	POLAR3 quintile	2010	2011	2012	2013	2014	2015
June deadline applications	Quintile 1	1,525	1,635	1,475	1,695	1,845	2,325
	Quintile 2	2,265	2,355	2,240	2,575	2,620	3,355
	Quintile 3	2,830	3,070	2,770	3,095	3,330	4,095
	Quintile 4	4,290	4,535	4,100	4,495	4,635	5,735
	Quintile 5	5,975	6,675	5,960	6,490	6,770	8,285
Offers	Quintile 1	1,125	1,190	1,045	1,320	1,520	1,925
	Quintile 2	1,720	1,775	1,590	2,070	2,195	2,730
	Quintile 3	2,105	2,255	1,960	2,430	2,765	3,390
	Quintile 4	3,305	3,460	3,040	3,685	3,845	4,780
	Quintile 5	4,760	5,230	4,480	5,370	5,645	6,940
Offer rate	Quintile 1	73.7%	72.7%	70.7%	78.1%	82.5%	82.8%
	Quintile 2	75.8%	75.3%	71.0%	80.4%	83.9%	81.4%
	Quintile 3	74.4%	73.5%	70.7%	78.6%	83.0%	82.8%
	Quintile 4	77.0%	76.3%	74.1%	82.1%	82.9%	83.3%
	Quintile 5	79.6%	78.4%	75.2%	82.8%	83.4%	83.8%
Average offer rate	Quintile 1	75.3%	74.7%	72.7%	80.3%	83.4%	83.2%
	Quintile 2	75.9%	74.7%	71.9%	81.2%	83.1%	81.8%
	Quintile 3	75.6%	74.4%	71.4%	79.4%	83.4%	83.1%
	Quintile 4	77.5%	76.0%	74.0%	81.4%	83.1%	83.0%
	Quintile 5	78.3%	77.9%	74.1%	81.9%	83.2%	83.6%
Percentage point difference between offer rate and average offer rate	Quintile 1	-1.6	-1.9	-2.1	-2.2	-0.8	-0.4
	Quintile 2	-0.1	0.6	-0.9	-0.8	0.7	-0.4
	Quintile 3	-1.2	-0.9	-0.7	-0.9	-0.3	-0.3
	Quintile 4	-0.4	0.3	0.2	0.7	-0.1	0.4
	Quintile 5	1.4	0.5	1.1	0.8	0.2	0.2
Contribution of group to the average offer rate	Quintile 1	0.180	0.166	0.178	0.173	0.166	0.166
	Quintile 2	0.200	0.193	0.203	0.205	0.193	0.191
	Quintile 3	0.221	0.222	0.219	0.218	0.223	0.211
	Quintile 4	0.300	0.294	0.296	0.285	0.285	0.277
	Quintile 5	0.410	0.420	0.416	0.404	0.401	0.396

P.9 18 year old offer rate by POLAR3 quintile

Note: The line for a group is not plotted when that group made fewer than 10 applications in any of the years from 2010-2015.

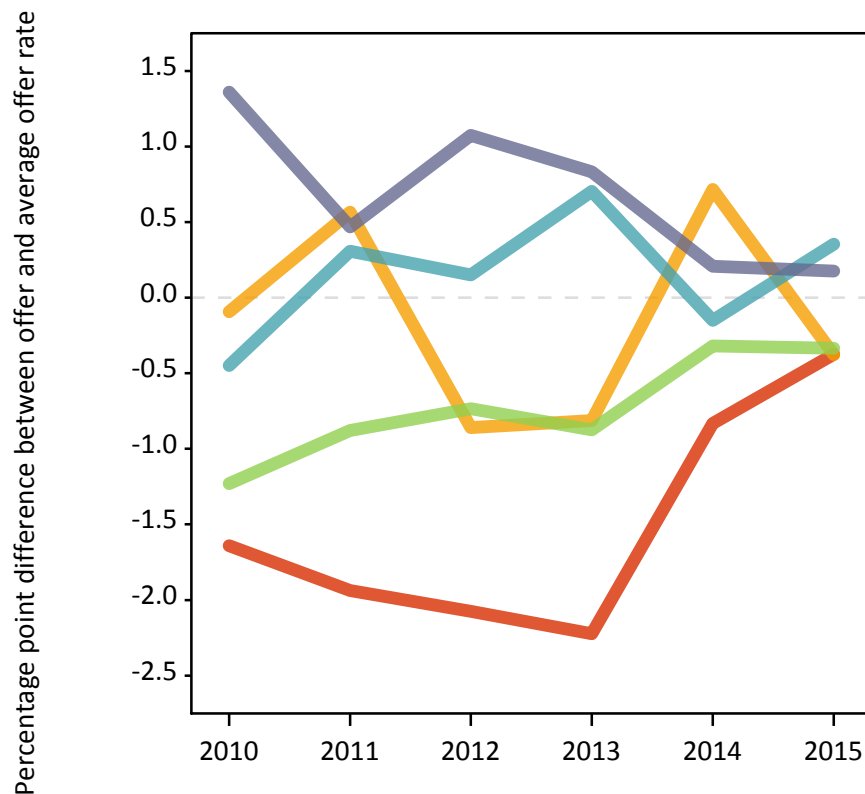
- Quintile 1
- Quintile 2
- Quintile 3
- Quintile 4
- Quintile 5



P.10 Percentage point difference between 18 year old offer rate and average offer rate by POLAR3 quintile

Note: The line for a group is not plotted when that group made fewer than 50 applications in any of the years from 2010-2015.

- Quintile 1
- Quintile 2
- Quintile 3
- Quintile 4
- Quintile 5



P.11 18 year old applicants by ethnic group

Statistic	Ethnic group	2010	2011	2012	2013	2014	2015
June deadline applicants	Asian	1,220	1,520	1,490	1,705	1,640	2,235
	Black	260	305	325	575	640	830
	Mixed	430	515	485	595	610	955
	White	13,670	14,485	13,060	14,435	15,210	18,480
	Other	115	150	150	150	180	225
Placed June deadline applicants	Asian	125	115	110	155	155	180
	Black	30	30	25	45	65	65
	Mixed	55	50	55	80	75	125
	White	1,935	1,995	1,780	2,000	2,300	2,770
	Other	10	15	15	20	15	15
All placed applicants	Asian	145	130	135	180	180	210
	Black	35	35	40	50	75	80
	Mixed	60	55	70	90	75	130
	White	2,265	2,160	2,080	2,150	2,485	3,010
	Other	15	15	15	25	20	20
June deadline applicants per 10,000 population	Asian	197.7	241.2	229.9	258.4	241.8	315.7
	Black	99.3	112.3	114.7	193.0	211.1	261.2
	Mixed	184.7	213.5	186.6	220.4	211.3	310.1
	White	203.9	223.7	202.3	229.4	246.5	296.6
	Other	146.8	185.2	169.5	166.5	194.5	235.7
Placed June deadline applicants per 10,000 population	Asian	20.1	18.2	17.0	23.5	23.0	25.4
	Black	11.1	11.0	9.6	15.2	21.4	19.8
	Mixed	24.2	21.5	20.3	30.0	25.4	40.2
	White	28.9	30.8	27.6	31.8	37.2	44.4
	Other	15.6	21.0	17.0	23.2	18.3	15.6
All placed applicants per 10,000 population	Asian	23.5	20.6	21.2	27.1	26.2	29.4
	Black	13.0	12.4	14.9	16.2	24.1	25.8
	Mixed	26.8	23.1	27.6	32.9	26.8	42.8
	White	33.8	33.4	32.2	34.2	40.3	48.3
	Other	19.5	21.0	19.2	25.4	22.6	19.7

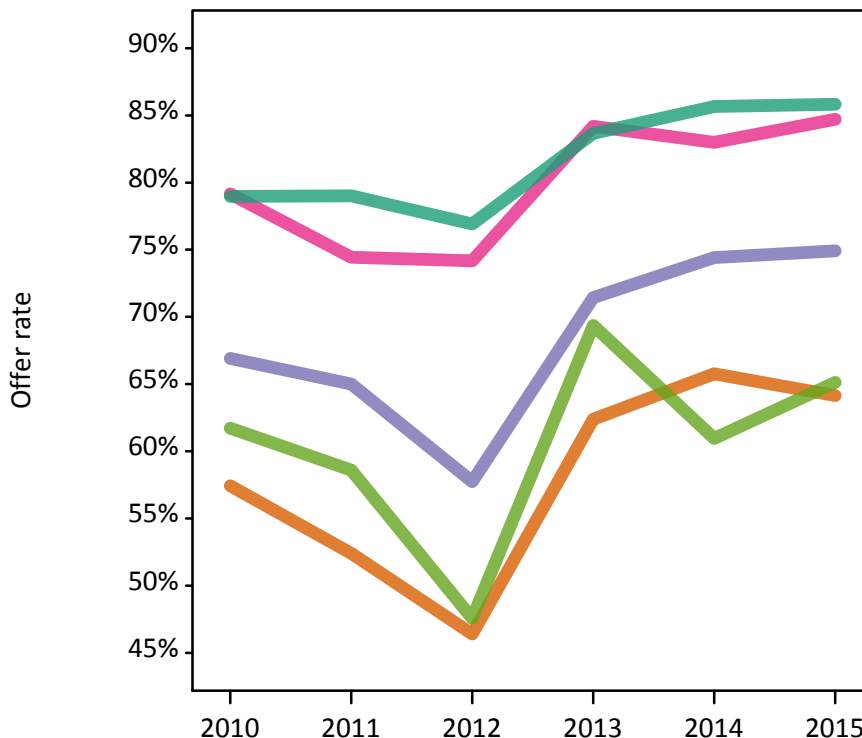
P.12 18 year old applications by ethnic group

Statistic	Ethnic group	2010	2011	2012	2013	2014	2015
June deadline applications	Asian	1,280	1,600	1,580	1,750	1,685	2,285
	Black	270	320	335	580	650	845
	Mixed	455	540	510	615	625	985
	White	14,690	15,605	13,920	15,190	16,030	19,375
	Other	130	155	165	160	185	240
Offers	Asian	735	840	735	1,090	1,110	1,465
	Black	180	210	195	415	485	635
	Mixed	360	400	380	515	515	835
	White	11,600	12,330	10,705	12,710	13,730	16,630
	Other	80	90	80	110	115	155
Offer rate	Asian	57.4%	52.4%	46.4%	62.4%	65.8%	64.1%
	Black	66.9%	65.0%	57.7%	71.4%	74.4%	74.9%
	Mixed	79.2%	74.4%	74.2%	84.2%	83.0%	84.7%
	White	79.0%	79.0%	76.9%	83.7%	85.7%	85.8%
	Other	61.7%	58.6%	47.6%	69.4%	61.0%	65.1%
Average offer rate	Asian	59.4%	55.4%	49.9%	63.9%	68.5%	66.3%
	Black	68.5%	64.9%	62.0%	77.0%	77.9%	76.8%
	Mixed	77.4%	76.1%	75.0%	83.1%	84.5%	84.7%
	White	78.8%	78.6%	76.3%	83.3%	85.1%	85.5%
	Other	63.2%	58.9%	51.6%	68.2%	66.4%	65.7%
Percentage point difference between offer rate and average offer rate	Asian	-2.0	-2.9	-3.5	-1.6	-2.7	-2.1
	Black	-1.5	0.1	-4.3	-5.5	-3.4	-1.9
	Mixed	1.8	-1.7	-0.8	1.1	-1.5	-0.0
	White	0.2	0.4	0.6	0.3	0.5	0.3
	Other	-1.5	-0.3	-4.1	1.2	-5.5	-0.6
Contribution of group to the average offer rate	Asian	0.236	0.251	0.260	0.248	0.208	0.220
	Black	0.119	0.118	0.117	0.115	0.122	0.092
	Mixed	0.104	0.094	0.094	0.095	0.088	0.081
	White	0.891	0.878	0.869	0.857	0.858	0.837
	Other	0.072	0.062	0.079	0.085	0.069	0.077

P.13 18 year old offer rate by ethnic group

Note: The line for a group is not plotted when that group made fewer than 10 applications in any of the years from 2010-2015.

- Asian
- Black
- Mixed
- White
- Other



P.14 Percentage point difference between 18 year old offer rate and average offer rate by ethnic group

Note: The line for a group is not plotted when that group made fewer than 50 applications in any of the years from 2010-2015.

- Asian
- Black
- Mixed
- White
- Other



P.15 Applicants (all ages)

Statistic	2010	2011	2012	2013	2014	2015
June deadline applicants	24,165	26,790	23,830	26,720	27,495	33,295
Placed June deadline applicants	3,460	3,610	3,025	3,525	3,930	4,565
All placed applicants	3,945	3,875	3,530	3,800	4,300	5,030

P.16 Applications (all ages)

Statistic	2010	2011	2012	2013	2014	2015
June deadline applications	26,325	29,195	25,785	28,425	29,290	35,155
Offers	17,580	19,185	16,180	20,150	21,365	26,155
Offer rate	66.8%	65.7%	62.7%	70.9%	72.9%	74.4%

P.17 Applicants (all ages) by sex

Statistic	Sex	2010	2011	2012	2013	2014	2015
June deadline applicants	Men	11,355	12,540	10,895	12,395	11,945	14,575
	Women	12,815	14,255	12,940	14,325	15,550	18,720
Placed June deadline applicants	Men	1,610	1,655	1,365	1,655	1,665	1,945
	Women	1,850	1,955	1,655	1,870	2,265	2,615
All placed applicants	Men	1,840	1,765	1,590	1,770	1,815	2,150
	Women	2,105	2,110	1,940	2,030	2,485	2,880

P.18 Applications (all ages) by sex

Statistic	Sex	2010	2011	2012	2013	2014	2015
June deadline applications	Men	12,560	13,805	11,890	13,330	12,900	15,515
	Women	13,765	15,390	13,900	15,095	16,390	19,640
Offers	Men	8,650	9,450	7,990	9,820	9,605	11,825
	Women	8,930	9,735	8,190	10,335	11,760	14,330
Offer rate	Men	68.9%	68.5%	67.2%	73.7%	74.5%	76.2%
	Women	64.9%	63.2%	58.9%	68.5%	71.7%	73.0%

P.19 Applicants (all ages) by POLAR3 quintile

Statistic	POLAR3 quintile	2010	2011	2012	2013	2014	2015
June deadline applicants	Quintile 1	2,510	2,735	2,550	2,835	3,065	3,605
	Quintile 2	3,380	3,745	3,370	3,855	3,975	4,820
	Quintile 3	4,125	4,520	4,060	4,655	4,840	5,785
	Quintile 4	5,885	6,440	5,690	6,355	6,415	7,810
	Quintile 5	8,210	9,275	8,110	8,970	9,165	11,215
Placed June deadline applicants	Quintile 1	350	345	335	365	440	445
	Quintile 2	465	470	420	520	570	655
	Quintile 3	545	580	480	555	690	775
	Quintile 4	880	895	750	905	930	1,150
	Quintile 5	1,210	1,305	1,035	1,180	1,295	1,525
All placed applicants	Quintile 1	380	360	375	390	480	495
	Quintile 2	515	500	480	565	615	710
	Quintile 3	610	625	555	595	750	860
	Quintile 4	1,010	955	880	970	1,020	1,260
	Quintile 5	1,420	1,425	1,230	1,275	1,435	1,695

P.20 Applications (all ages) by POLAR3 quintile

Statistic	POLAR3 quintile	2010	2011	2012	2013	2014	2015
June deadline applications	Quintile 1	2,845	3,085	2,850	3,165	3,380	3,945
	Quintile 2	3,740	4,140	3,725	4,180	4,315	5,140
	Quintile 3	4,485	4,900	4,375	4,890	5,120	6,105
	Quintile 4	6,400	7,025	6,145	6,720	6,830	8,230
	Quintile 5	8,800	9,960	8,640	9,420	9,605	11,665
Offers	Quintile 1	1,645	1,770	1,600	2,020	2,275	2,705
	Quintile 2	2,370	2,570	2,190	2,870	3,045	3,705
	Quintile 3	2,845	3,065	2,595	3,315	3,700	4,470
	Quintile 4	4,365	4,715	3,990	4,880	5,025	6,220
	Quintile 5	6,325	7,015	5,770	7,035	7,285	9,010
Offer rate	Quintile 1	57.9%	57.3%	56.1%	63.8%	67.3%	68.6%
	Quintile 2	63.4%	62.1%	58.8%	68.6%	70.6%	72.0%
	Quintile 3	63.5%	62.5%	59.3%	67.8%	72.3%	73.2%
	Quintile 4	68.2%	67.2%	64.9%	72.6%	73.6%	75.6%
	Quintile 5	71.9%	70.5%	66.8%	74.7%	75.9%	77.2%

P.21 Applicants (all ages) by ethnic group

Statistic	Ethnic group	2010	2011	2012	2013	2014	2015
June deadline applicants	Asian	2,255	2,825	2,795	3,010	2,830	3,595
	Black	805	930	935	1,130	1,265	1,535
	Mixed	755	855	795	960	955	1,425
	White	19,920	21,675	18,800	21,085	21,920	26,050
	Other	255	325	350	360	385	445
Placed June deadline applicants	Asian	240	225	220	270	255	280
	Black	70	70	60	80	115	105
	Mixed	95	105	90	130	125	180
	White	3,005	3,150	2,615	2,990	3,380	3,940
	Other	25	35	30	45	35	35
All placed applicants	Asian	270	245	265	305	300	330
	Black	75	80	85	85	125	130
	Mixed	105	110	115	140	135	200
	White	3,435	3,380	3,010	3,205	3,675	4,295
	Other	30	35	35	45	45	40

P.22 Applications (all ages) by ethnic group

Statistic	Ethnic group	2010	2011	2012	2013	2014	2015
June deadline applications	Asian	2,420	3,035	3,015	3,105	2,935	3,700
	Black	880	990	995	1,175	1,315	1,575
	Mixed	830	925	855	1,020	995	1,495
	White	21,720	23,680	20,365	22,565	23,475	27,645
	Other	280	355	390	380	420	475
Offers	Asian	1,150	1,275	1,165	1,620	1,640	2,110
	Black	345	380	355	635	745	940
	Mixed	525	590	540	745	735	1,140
	White	15,310	16,680	13,885	16,860	17,950	21,545
	Other	135	155	145	200	200	255
Offer rate	Asian	47.5%	42.1%	38.6%	52.1%	55.9%	57.1%
	Black	39.1%	38.3%	36.0%	54.0%	56.7%	59.7%
	Mixed	63.0%	63.9%	63.3%	72.9%	73.9%	76.1%
	White	70.5%	70.4%	68.2%	74.7%	76.5%	77.9%
	Other	47.5%	43.9%	37.6%	53.3%	48.0%	53.9%

Technical Notes and Definitions

UCAS undergraduate scheme

Adjustment

Adjustment allows applicants who have met and exceeded the terms of their conditional firm offer to seek and find a place at another provider whilst keeping their place at their original firm choice provider.

Clearing

Clearing is a route for applicants that are not placed and holding no offers to find a place on courses with vacancies.

Cycle year

The UCAS application cycle which runs from September to October the following year. For example the 2015 cycle runs from September 2014 through to October 2015.

End of cycle

The point in the cycle to which the numbers in this report refer, and the point at which the cycle is closed such that no more applications or offers can be made, and no more applicants can be placed. Numbers reported at the end of cycle exclude information on a small number of applicants who cancelled during the cycle.

Extra

Applicants who are unsuccessful in obtaining an offer or decline all offers may be eligible to apply through Extra, where they can apply to one further course at a time. Extra operates from 25 February until early July. It provides applicants who are eligible the possibility of obtaining an offer before exam results are published and Clearing starts.

June 30 deadline

The deadline for main scheme applications. Applicants who apply after this date will go directly into Clearing.

Record of Prior Acceptance (RPA)

RPA is an acceptance route used when a provider informs UCAS of applicants it has accepted outside of the normal application process (e.g. individuals who have applied directly to the provider).

Reporting groups

Ethnic group

High level grouping of ethnic origin as declared by the applicant: 'White', 'Black', 'Asian', 'Mixed', 'Other', 'Unknown'. Applicants who declare themselves as 'Unknown' ethnic origin are not reported in these tables, but are included in the associated csv data file.

POLAR3 quintile

Developed by HEFCE, POLAR3 classifies small areas across the UK into five groups according to their level of young participation in Higher Education. Each of these groups represents around 20 per cent of young people and is ranked from Quintile 1 (areas with the lowest young participation rates, considered as the most disadvantaged) to Quintile 5 (highest young participation rates, considered most advantaged). POLAR3 is based on the participation rates of young people between 2005 and 2009 who entered Higher Education between 2005-06 and 2010-11, therefore is most suitable for applicants aged 19 and under. These groups are assigned using the postcode declared by the applicant at the time of their application. If a UK postcode is invalid, considered unsafe for measurement or there is no link to Census geography possible then the applicant is not assigned to a quintile. Applicants with no POLAR3 quintile are not reported.

Sex

Sex as declared by the applicant.

SIMD quintile

Scottish index of multiple deprivation (SIMD) for 2012 identifies small area concentrations of multiple deprivation across all of Scotland, providing a relative measure of deprivation amongst 6505 small areas (data zones) based on 7 socio-economic domains. These small areas are classified into five groups ranked from Quintile 1 (considered the most deprived) to Quintile 5 (considered least deprived), with equal populations in each quintile. Quintiles are assigned using the postcode declared by the applicant, applicants declaring invalid postcodes are classified as 'Not assigned' and are not reported.

SIMD is only defined for applicants domiciled in Scotland, therefore any applicants domiciled outside of Scotland cannot be assigned to an SIMD quintile and so are not reported for this measure.

SIMD is only reported for providers in Scotland. Application and entry rates by SIMD are reported in the 2015 End of Cycle Report and the 2016 cycle January deadline application rate report.

Statistics reported in the tables

All placed applicants

The number of applicants placed for entry into higher education at the provider through one of their choices, including any choices made through Extra, or via Adjustment, Clearing or RPA.

All placed applicants per 10,000 population

The number of total UK domiciled 18 year old placed applicants for entry into higher education at the provider divided by the number of UK 18 year olds in the population, multiplied by 10,000. This gives the number of 18 year olds, for every 10,000 in the population, that were placed at the provider through one of their choices, including any choices made through Extra, or via Adjustment, Clearing or RPA. It is an alternative way of expressing the entry rate to a provider. By referencing the underlying population this statistic shows how the number of placed applicants is changing in relation to the available pool of potential applicants and so gives the chance that somebody from the group will be placed at a provider.

This statistic is only reported for 18 year olds.

Average offer rate

The offer rate that you might expect if the predicted grades and subject choice of applicants were the only factors that influenced whether an applicant was made an offer by the provider. The average offer rate is calculated by dividing applicants according to their specific combination of grades (for A levels the best three predicted grades are used, for BTECs, International Baccalaureate and Scottish Highers and Advanced Highers, predicted grades along with any grades already achieved upon applying are used) and subject choice. For each combination the number of main scheme offers is divided by the number of main scheme applications, to give an overall offer rate. This is then multiplied by the number of applications made by the group for which the average offer rate is being calculated (for example POLAR3 quintile 1), to give an average number of offers for that group. These average number of offers are then added together across all combinations of predicted grade and subject and divided by the number of main scheme applications from the group to give the average offer rate.

The average offer rate does not attempt to control for any other factors that may play a part in the decision to make an offer, such as the subject of the qualifications studied, their relevance to a course, or the grade in each subject; higher numbers of A levels being studied; the exact profile of grades predicted; personal statements; teacher references; interviews; or any other criteria (such as work experience or portfolios) that may be part of the admissions decision.

This statistic is only reported for 18 year olds.

Contribution of group to the average offer rate

The way in which the average offer rate is defined means that the pattern of application and offers of a group (for example POLAR3 quintile 1) will always contribute, in part, to the average offer rate for that group. When this contribution is large, the average offer rate will mainly reflect the patterns for the group, meaning that the value of the average offer rate will be similar to the offer rate, the percentage point difference statistic will be small, and any real difference between the offer rate and what might be expected given the predicted grades and subject choices of the applicants will be difficult to detect.

Values of the contribution of group to the average offer rate range between 0 and 1. The closer the value is to 1 the greater the contribution a group makes to its own average offer rate.

This statistic is only reported for 18 year olds.

Placed June deadline applicants

An applicant who has been placed for entry into higher education at the provider through a June deadline application.

Placed June deadline applicants per 10,000 population

The number of UK domiciled 18 year old placed June deadline applicants at the provider divided by the number of UK 18 year olds in the population, multiplied by 10,000. This gives the number of 18 year olds, for every 10,000 in the population, that were placed at the provider through one of their June deadline applications. It is an alternative way of expressing the entry rate to a provider, but for placed June deadline applicants only. By referencing the underlying population this statistic shows how the number of placed June deadline applicants is changing in relation to the available pool of potential 18 year old applicants and so gives the chance that somebody from the group will be placed at a provider through a June deadline application.

This statistic is only reported for 18 year olds.

June deadline applications

An application (or choice) to a course in higher education to the provider that is made by the June 30 deadline. Each applicant can make up to five choices this way. The number of June deadline applications does not include choices made through the following routes: Clearing, Extra, Adjustment and RPAs. Applications made to October deadline courses received after the October deadline are not included in these statistics.

June deadline applicants

The number of applicants that made at least one application to the provider by the June 30 deadline.

June deadline applicants per 10,000 population

The number of UK domiciled 18 year old June deadline applicants to the provider divided by the number of UK 18 year olds in the population, multiplied by 10,000. This gives the number of 18 year olds, for every 10,000 in the population, who applied by the June 30 deadline. It is equivalent to the application rate. By referencing the underlying population this statistic shows how the number of June deadline applicants is changing in relation to the available pool of potential 18 year old applicants and so gives the chance that somebody from the group will apply to a provider by the June 30 deadline.

This statistic is only reported for 18 year olds.

Offers

An offer is defined as a provider's decision in response to an application to offer a place to an applicant, often subject to the applicant satisfying academic and/or other criteria, via a June deadline application (i.e. does not cover choices made through the following routes: Clearing, Extra, Adjustment and RPAs).

Offer rate

The number of offers made divided by the number of June deadline applications. This gives the proportion of all June deadline applications to the provider that received an offer.

Percentage point difference between offer rate and average offer rate

The offer rate minus the average offer rate.

The percentage point difference can be compared to the expected range of statistical variation resulting from the calculation of the average offer rate using the Average Offer Rate Lookup Table. Where the value of the percentage point difference lies outside of this range, the percentage point difference may be considered to represent a real difference between the offer rate and the average offer rate.

Other definitions

Age

This analysis uses country-specific age definitions that align with the cut off points for school and college cohorts within the different administrations of the UK. For England and Wales, ages are defined on the 31 August, for Northern Ireland on the 1 July and for Scotland on the 28 February the following year. Defining ages in this way matches the assignment of children to school cohorts. For applicants outside of the UK a cohort cut off of 31 August has been used.

Provider

A higher education provider - a university or college.

UK domiciled

Declared area of permanent residence within England, Northern Ireland, Scotland and Wales. Applicants from the Channel Islands and Isle of Man are not included.