

M80 Middlesex University

Cycle years: 2010 - 2015

Cycle Reference Point: End of Cycle

Applicant coverage: UK domiciled

Reporting groups: Sex, POLAR3, ethnic group

Applicant statistics: June deadline applicants, placed June deadline applicants, all placed applicants, June deadline applicants per 10,000 population, placed June deadline applicants per 10,000 population, all placed applicants per 10,000 population

Application statistics: June deadline applications, offers, offer rate, average offer rate, percentage point difference between offer rate and average offer rate, contribution of group to the average offer rate

Non-disclosure controls: To avoid the disclosure of information about any individual the following measures are taken

- Applicants, placed applicants, applications and offers are rounded to the nearest 5.
- Applicants/placed applicants per 10,000 population figures are reported as 0 if the applicant/placed applicant figures are rounded to 0.
- All statistics related to the offer rate are not reported when the number of applications for a group is less than 10. The percentage point difference between the offer rate and the average offer rate is not reported when the number of applications for a group is less than 50.
- Offer rates are reported as 0% if there are fewer than 5 offers, and 100% if the number of offers is within 5 of the number of applications. When the offer rate is reported as 0% or 100%, it is reported in italics.

Contents:

18 year old applicants:	P.1
18 year old applications:	P.2
18 year old applicants by sex:	P.3
18 year old applications by sex:	P.4
18 year old applicants by POLAR3 quintile:	P.7
18 year old applications by POLAR3 quintile:	P.8
18 year old applicants by ethnic group:	P.11
18 year old applications by ethnic group:	P.12
Applicants (all ages):	P.15
Applications (all ages):	P.16
Applicants (all ages) by sex:	P.17
Applications (all ages) by sex:	P.18
Applicants (all ages) by POLAR3 quintile:	P.19
Applications (all ages) by POLAR3 quintile:	P.20
Applicants (all ages) by ethnic group:	P.21
Applications (all ages) by ethnic group:	P.22

P.1 18 year old applicants

Statistic	2010	2011	2012	2013	2014	2015
June deadline applicants	7,110	7,990	8,465	7,535	7,470	7,150
Placed June deadline applicants	1,070	985	935	980	775	1,055
All placed applicants	1,370	1,160	1,120	1,255	995	1,525
June deadline applicants per 10,000 population	90.0	103.8	109.4	99.0	99.2	93.3
Placed June deadline applicants per 10,000	13.5	12.8	12.1	12.9	10.3	13.8
All placed applicants per 10,000 population	17.3	15.1	14.5	16.5	13.2	19.9

P.2 18 year old applications

Statistic	2010	2011	2012	2013	2014	2015
June deadline applications	7,400	8,280	8,755	7,690	7,670	7,290
Offers	5,625	5,835	6,005	5,150	5,090	5,365
Offer rate	76.0%	70.5%	68.6%	66.9%	66.4%	73.6%

P.3 18 year old applicants by sex

Statistic	Sex	2010	2011	2012	2013	2014	2015
June deadline applicants	Men	2,275	2,740	2,920	2,345	2,435	2,305
	Women	4,835	5,250	5,545	5,190	5,040	4,845
Placed June deadline applicants	Men	330	365	350	335	275	380
	Women	740	620	585	645	500	675
All placed applicants	Men	435	445	430	430	370	560
	Women	935	715	690	825	630	960
June deadline applicants per 10,000 population	Men	56.6	69.7	73.6	60.1	62.9	58.8
	Women	124.6	139.4	147.1	140.1	137.6	129.6
Placed June deadline applicants per 10,000 population	Men	8.2	9.2	8.8	8.6	7.1	9.6
	Women	19.0	16.5	15.5	17.4	13.6	18.1
All placed applicants per 10,000 population	Men	10.8	11.3	10.8	11.0	9.5	14.3
	Women	24.1	19.0	18.4	22.3	17.2	25.7

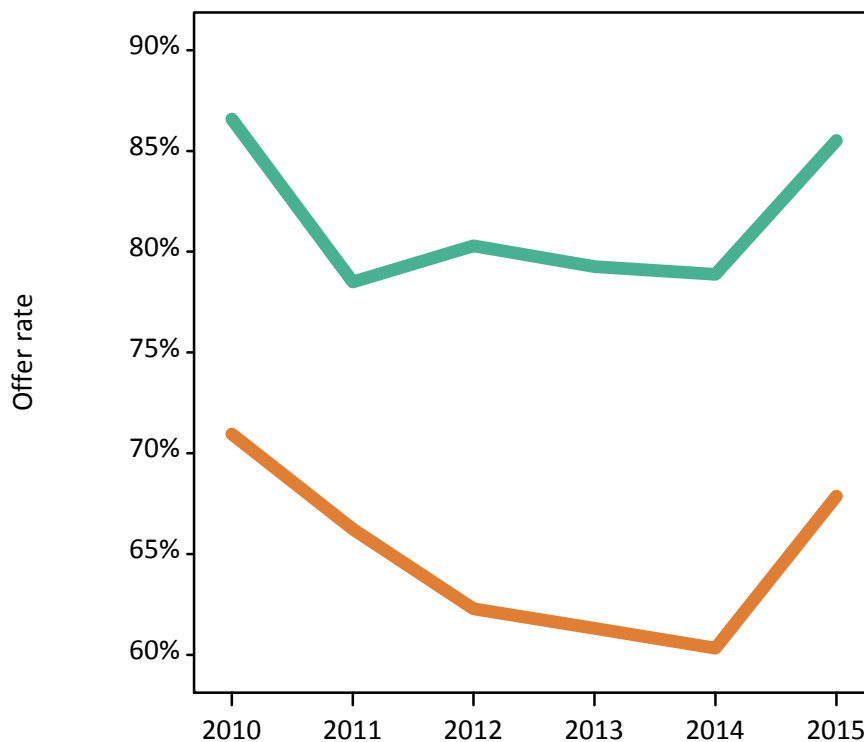
P.4 18 year old applications by sex

Statistic	Sex	2010	2011	2012	2013	2014	2015
June deadline applications	Men	2,395	2,870	3,060	2,405	2,510	2,360
	Women	5,010	5,410	5,695	5,285	5,160	4,930
Offers	Men	2,070	2,255	2,460	1,905	1,980	2,020
	Women	3,555	3,585	3,545	3,240	3,110	3,345
Offer rate	Men	86.6%	78.5%	80.3%	79.3%	78.9%	85.5%
	Women	71.0%	66.2%	62.3%	61.3%	60.3%	67.9%
Average offer rate	Men	86.4%	78.2%	80.2%	79.0%	78.8%	86.1%
	Women	71.0%	66.4%	62.3%	61.4%	60.4%	67.6%
Percentage point difference between offer rate and average offer rate	Men	0.2	0.3	0.1	0.2	0.1	-0.6
	Women	-0.1	-0.2	-0.1	-0.1	-0.0	0.3
Contribution of group to the average offer rate	Men	0.531	0.555	0.560	0.560	0.583	0.600
	Women	0.776	0.764	0.764	0.800	0.797	0.808

P.5 18 year old offer rate by sex

Note: The line for a group is not plotted when that group made fewer than 10 applications in any of the years from 2010-2015.

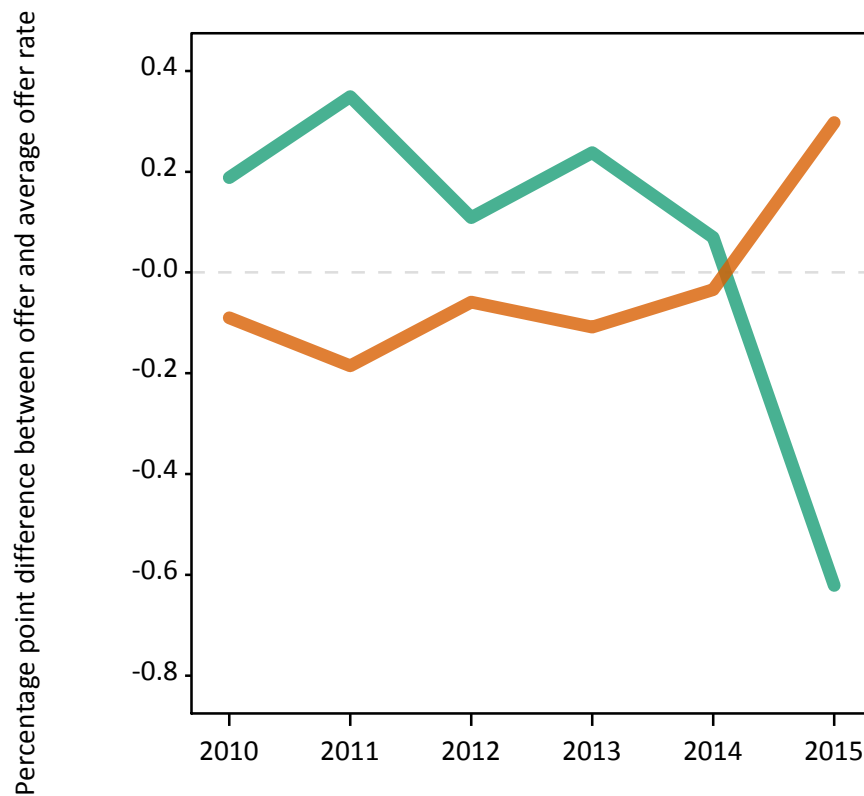
Men
Women



P.6 Percentage point difference between 18 year old offer rate and average offer rate by sex

Note: The line for a group is not plotted when that group made fewer than 50 applications in any of the years from 2010-2015.

Men
Women



P.7 18 year old applicants by POLAR3 quintile

Statistic	POLAR3 quintile	2010	2011	2012	2013	2014	2015
June deadline applicants	Quintile 1	530	620	650	600	635	605
	Quintile 2	950	1,075	1,165	940	1,060	980
	Quintile 3	1,825	2,030	2,220	2,045	1,995	1,855
	Quintile 4	1,930	2,190	2,295	2,030	2,010	1,940
	Quintile 5	1,855	2,065	2,125	1,905	1,760	1,745
Placed June deadline applicants	Quintile 1	70	75	65	80	65	70
	Quintile 2	125	130	105	105	100	135
	Quintile 3	305	245	240	285	225	275
	Quintile 4	285	245	275	255	185	270
	Quintile 5	280	285	245	255	200	300
All placed applicants	Quintile 1	95	80	80	90	70	85
	Quintile 2	150	150	120	125	115	175
	Quintile 3	380	290	295	365	275	410
	Quintile 4	380	290	320	340	265	420
	Quintile 5	360	350	305	330	265	425
June deadline applicants per 10,000 population	Quintile 1	35.8	43.2	45.8	43.1	45.6	43.1
	Quintile 2	61.7	71.4	77.6	63.7	72.6	66.1
	Quintile 3	114.9	131.9	143.6	134.1	132.4	120.7
	Quintile 4	121.1	139.9	144.5	129.8	130.6	124.1
	Quintile 5	109.6	124.6	126.4	115.3	107.8	104.2
Placed June deadline applicants per 10,000 population	Quintile 1	4.9	5.2	4.7	5.9	4.5	4.9
	Quintile 2	8.2	8.7	6.9	7.0	6.7	9.0
	Quintile 3	19.1	16.1	15.5	18.6	15.0	18.0
	Quintile 4	18.0	15.5	17.4	16.3	12.1	17.2
	Quintile 5	16.4	17.3	14.7	15.3	12.3	18.0
All placed applicants per 10,000 population	Quintile 1	6.4	5.6	5.5	6.6	5.1	6.1
	Quintile 2	9.8	9.8	8.0	8.3	7.9	11.9
	Quintile 3	24.0	18.7	19.2	24.0	18.4	26.8
	Quintile 4	23.9	18.5	20.2	21.7	17.3	26.9
	Quintile 5	21.1	21.2	18.1	20.0	16.3	25.4

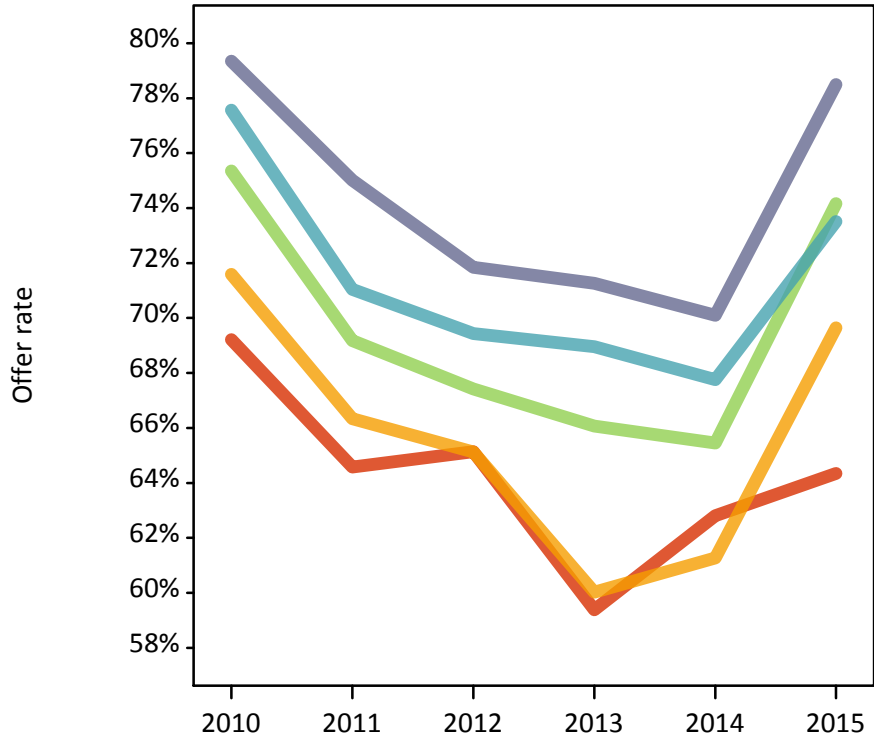
P.8 18 year old applications by POLAR3 quintile

Statistic	POLAR3 quintile	2010	2011	2012	2013	2014	2015
June deadline applications	Quintile 1	550	640	675	615	650	615
	Quintile 2	980	1,100	1,195	960	1,085	1,000
	Quintile 3	1,910	2,105	2,305	2,075	2,050	1,885
	Quintile 4	2,005	2,270	2,370	2,070	2,060	1,975
	Quintile 5	1,935	2,155	2,195	1,965	1,805	1,790
Offers	Quintile 1	380	410	440	365	405	395
	Quintile 2	705	730	775	575	665	695
	Quintile 3	1,440	1,455	1,555	1,370	1,345	1,400
	Quintile 4	1,555	1,615	1,645	1,425	1,395	1,450
	Quintile 5	1,535	1,615	1,575	1,400	1,265	1,405
Offer rate	Quintile 1	69.2%	64.6%	65.1%	59.4%	62.8%	64.3%
	Quintile 2	71.6%	66.3%	65.1%	60.0%	61.3%	69.6%
	Quintile 3	75.4%	69.2%	67.4%	66.1%	65.4%	74.2%
	Quintile 4	77.6%	71.0%	69.4%	69.0%	67.8%	73.5%
	Quintile 5	79.3%	75.0%	71.8%	71.3%	70.1%	78.5%
Average offer rate	Quintile 1	73.4%	64.5%	66.1%	59.9%	62.9%	66.3%
	Quintile 2	71.6%	66.2%	65.5%	62.1%	61.2%	69.6%
	Quintile 3	76.0%	70.6%	68.5%	66.8%	65.6%	73.2%
	Quintile 4	76.6%	71.5%	68.8%	67.7%	68.9%	75.1%
	Quintile 5	78.5%	73.3%	70.9%	70.7%	68.6%	77.1%
Percentage point difference between offer rate and average offer rate	Quintile 1	-4.2	0.1	-1.0	-0.5	-0.0	-1.9
	Quintile 2	-0.0	0.2	-0.3	-2.1	0.1	0.1
	Quintile 3	-0.6	-1.4	-1.0	-0.7	-0.2	0.9
	Quintile 4	0.9	-0.5	0.6	1.3	-1.1	-1.6
	Quintile 5	0.9	1.7	0.9	0.6	1.5	1.4
Contribution of group to the average offer rate	Quintile 1	0.179	0.171	0.158	0.166	0.162	0.183
	Quintile 2	0.214	0.202	0.202	0.200	0.211	0.234
	Quintile 3	0.328	0.319	0.320	0.330	0.328	0.328
	Quintile 4	0.344	0.342	0.326	0.332	0.332	0.341
	Quintile 5	0.346	0.334	0.314	0.330	0.319	0.331

P.9 18 year old offer rate by POLAR3 quintile

Note: The line for a group is not plotted when that group made fewer than 10 applications in any of the years from 2010-2015.

- Quintile 1
- Quintile 2
- Quintile 3
- Quintile 4
- Quintile 5



P.10 Percentage point difference between 18 year old offer rate and average offer rate by POLAR3 quintile

Note: The line for a group is not plotted when that group made fewer than 50 applications in any of the years from 2010-2015.

- Quintile 1
- Quintile 2
- Quintile 3
- Quintile 4
- Quintile 5



P.11 18 year old applicants by ethnic group

Statistic	Ethnic group	2010	2011	2012	2013	2014	2015
June deadline applicants	Asian	1,490	1,820	2,015	1,850	1,870	1,800
	Black	1,205	1,405	1,610	1,450	1,330	1,275
	Mixed	410	470	490	440	405	450
	White	3,715	3,940	3,880	3,395	3,425	3,140
	Other	235	300	415	355	385	410
Placed June deadline applicants	Asian	185	210	215	255	175	300
	Black	225	180	185	210	145	205
	Mixed	80	70	60	60	45	90
	White	525	465	400	380	350	370
	Other	50	55	70	70	50	75
All placed applicants	Asian	300	265	280	360	260	465
	Black	305	220	240	295	210	340
	Mixed	100	90	70	75	65	115
	White	590	505	440	425	390	440
	Other	65	70	80	90	70	120
June deadline applicants per 10,000 population	Asian	240.9	288.6	311.0	280.6	275.9	254.7
	Black	460.3	513.2	571.4	488.7	438.8	401.3
	Mixed	177.4	194.5	188.9	162.0	141.5	146.6
	White	55.4	60.8	60.1	54.0	55.5	50.4
	Other	306.5	372.8	470.1	389.3	415.8	423.7
Placed June deadline applicants per 10,000 population	Asian	29.9	33.0	32.9	38.7	25.8	42.1
	Black	85.2	65.5	66.1	70.1	48.5	64.4
	Mixed	33.7	29.3	23.8	22.2	16.3	28.5
	White	7.9	7.2	6.2	6.1	5.7	6.0
	Other	63.6	69.1	79.1	77.2	52.6	75.8
All placed applicants per 10,000 population	Asian	48.4	42.2	43.5	54.7	38.0	65.7
	Black	115.8	80.8	84.9	99.4	69.9	106.9
	Mixed	43.6	37.2	27.3	27.4	21.9	37.0
	White	8.8	7.8	6.8	6.8	6.3	7.0
	Other	84.4	86.4	90.4	101.5	73.1	125.6

P.12 18 year old applications by ethnic group

Statistic	Ethnic group	2010	2011	2012	2013	2014	2015
June deadline applications	Asian	1,540	1,880	2,100	1,890	1,920	1,830
	Black	1,245	1,440	1,665	1,475	1,350	1,290
	Mixed	430	490	510	445	425	465
	White	3,885	4,085	3,995	3,475	3,520	3,210
	Other	245	320	430	365	400	420
Offers	Asian	1,320	1,480	1,595	1,415	1,435	1,465
	Black	920	975	1,085	890	845	875
	Mixed	335	325	340	310	280	360
	White	2,805	2,755	2,625	2,220	2,190	2,265
	Other	205	255	320	275	300	340
Offer rate	Asian	85.5%	78.8%	76.0%	75.0%	74.8%	80.1%
	Black	74.1%	67.8%	65.3%	60.3%	62.4%	67.7%
	Mixed	78.0%	66.6%	67.1%	70.0%	66.4%	77.4%
	White	72.1%	67.4%	65.7%	64.0%	62.2%	70.6%
	Other	83.5%	79.3%	74.6%	75.2%	75.4%	81.3%
Average offer rate	Asian	85.5%	79.1%	75.4%	74.5%	74.7%	80.0%
	Black	75.9%	69.7%	67.4%	62.7%	64.4%	69.5%
	Mixed	77.8%	67.8%	67.2%	70.7%	65.9%	75.8%
	White	71.7%	66.4%	64.9%	63.4%	61.3%	70.0%
	Other	81.0%	78.6%	75.2%	73.1%	76.5%	82.1%
Percentage point difference between offer rate and average offer rate	Asian	-0.1	-0.2	0.6	0.6	0.1	0.1
	Black	-1.8	-1.9	-2.0	-2.4	-2.1	-1.8
	Mixed	0.2	-1.2	-0.2	-0.6	0.5	1.6
	White	0.5	1.0	0.7	0.6	0.8	0.6
	Other	2.5	0.7	-0.6	2.1	-1.2	-0.8
Contribution of group to the average offer rate	Asian	0.383	0.377	0.375	0.382	0.400	0.399
	Black	0.294	0.282	0.288	0.288	0.280	0.286
	Mixed	0.167	0.144	0.125	0.139	0.130	0.165
	White	0.662	0.629	0.591	0.580	0.595	0.584
	Other	0.142	0.127	0.136	0.132	0.143	0.153

P.13 18 year old offer rate by ethnic group

Note: The line for a group is not plotted when that group made fewer than 10 applications in any of the years from 2010-2015.

- Asian
- Black
- Mixed
- White
- Other



P.14 Percentage point difference between 18 year old offer rate and average offer rate by ethnic group

Note: The line for a group is not plotted when that group made fewer than 50 applications in any of the years from 2010-2015.

- Asian
- Black
- Mixed
- White
- Other



P.15 Applicants (all ages)

Statistic	2010	2011	2012	2013	2014	2015
June deadline applicants	23,125	25,935	25,380	22,910	23,585	21,725
Placed June deadline applicants	3,600	3,545	2,950	2,940	2,530	3,165
All placed applicants	4,260	4,140	3,715	3,965	3,505	4,725

P.16 Applications (all ages)

Statistic	2010	2011	2012	2013	2014	2015
June deadline applications	24,550	27,520	26,590	23,760	24,580	22,595
Offers	14,155	14,130	13,215	11,380	11,670	12,395
Offer rate	57.6%	51.3%	49.7%	47.9%	47.5%	54.9%

P.17 Applicants (all ages) by sex

Statistic	Sex	2010	2011	2012	2013	2014	2015
June deadline applicants	Men	7,590	8,835	8,365	7,045	7,415	6,875
	Women	15,535	17,105	17,015	15,865	16,170	14,850
Placed June deadline applicants	Men	1,245	1,310	1,180	1,065	960	1,190
	Women	2,355	2,240	1,775	1,875	1,570	1,975
All placed applicants	Men	1,520	1,585	1,505	1,490	1,390	1,885
	Women	2,740	2,555	2,210	2,475	2,115	2,840

P.18 Applications (all ages) by sex

Statistic	Sex	2010	2011	2012	2013	2014	2015
June deadline applications	Men	8,140	9,460	8,905	7,370	7,840	7,220
	Women	16,410	18,060	17,685	16,390	16,740	15,375
Offers	Men	5,650	5,810	5,765	4,525	4,785	4,930
	Women	8,505	8,320	7,450	6,855	6,880	7,465
Offer rate	Men	69.4%	61.4%	64.7%	61.4%	61.1%	68.3%
	Women	51.8%	46.1%	42.1%	41.8%	41.1%	48.5%

P.19 Applicants (all ages) by POLAR3 quintile

Statistic	POLAR3 quintile	2010	2011	2012	2013	2014	2015
June deadline applicants	Quintile 1	1,515	1,760	1,775	1,710	1,845	1,680
	Quintile 2	2,735	3,050	3,130	2,775	2,980	2,770
	Quintile 3	6,565	7,380	7,300	6,670	6,800	6,215
	Quintile 4	6,135	6,900	6,750	5,975	6,200	5,670
	Quintile 5	6,095	6,770	6,350	5,705	5,695	5,290
Placed June deadline applicants	Quintile 1	215	210	190	215	170	185
	Quintile 2	360	375	290	315	280	355
	Quintile 3	1,020	1,000	830	840	715	870
	Quintile 4	910	890	780	775	640	830
	Quintile 5	1,075	1,055	845	790	720	910
All placed applicants	Quintile 1	255	230	230	255	210	250
	Quintile 2	420	425	360	395	365	500
	Quintile 3	1,195	1,180	1,060	1,135	970	1,335
	Quintile 4	1,090	1,035	970	1,050	940	1,265
	Quintile 5	1,280	1,260	1,075	1,120	1,010	1,355

P.20 Applications (all ages) by POLAR3 quintile

Statistic	POLAR3 quintile	2010	2011	2012	2013	2014	2015
June deadline applications	Quintile 1	1,580	1,830	1,835	1,750	1,895	1,715
	Quintile 2	2,860	3,160	3,245	2,855	3,075	2,835
	Quintile 3	6,970	7,860	7,645	6,905	7,060	6,460
	Quintile 4	6,465	7,290	7,060	6,175	6,450	5,870
	Quintile 5	6,590	7,300	6,720	6,000	6,025	5,615
Offers	Quintile 1	845	900	870	765	875	860
	Quintile 2	1,575	1,600	1,555	1,260	1,350	1,460
	Quintile 3	3,890	3,760	3,610	3,100	3,145	3,350
	Quintile 4	3,790	3,785	3,550	3,080	3,165	3,310
	Quintile 5	4,015	4,050	3,595	3,140	3,100	3,365
Offer rate	Quintile 1	53.7%	49.3%	47.5%	43.7%	46.0%	50.0%
	Quintile 2	55.0%	50.7%	48.0%	44.2%	43.8%	51.4%
	Quintile 3	55.8%	47.8%	47.2%	44.9%	44.5%	51.9%
	Quintile 4	58.6%	51.9%	50.3%	49.8%	49.1%	56.4%
	Quintile 5	60.9%	55.5%	53.5%	52.4%	51.4%	59.9%

P.21 Applicants (all ages) by ethnic group

Statistic	Ethnic group	2010	2011	2012	2013	2014	2015
June deadline applicants	Asian	4,170	4,900	5,085	4,560	4,750	4,515
	Black	7,225	8,295	8,375	7,475	7,485	6,790
	Mixed	1,360	1,560	1,480	1,350	1,380	1,275
	White	9,275	9,925	8,980	8,260	8,570	7,715
	Other	815	925	1,210	1,015	1,145	1,130
Placed June deadline applicants	Asian	580	680	585	625	520	750
	Black	965	980	770	815	650	795
	Mixed	250	250	215	190	165	230
	White	1,615	1,420	1,145	1,105	990	1,100
	Other	145	155	200	170	175	240
All placed applicants	Asian	810	850	785	910	800	1,165
	Black	1,160	1,175	1,045	1,225	1,015	1,245
	Mixed	305	290	255	235	220	315
	White	1,760	1,565	1,310	1,300	1,165	1,290
	Other	180	195	250	245	255	415

P.22 Applications (all ages) by ethnic group

Statistic	Ethnic group	2010	2011	2012	2013	2014	2015
June deadline applications	Asian	4,405	5,195	5,360	4,740	4,945	4,670
	Black	7,585	8,715	8,740	7,695	7,775	7,000
	Mixed	1,485	1,670	1,565	1,400	1,465	1,335
	White	9,895	10,580	9,360	8,595	8,915	8,070
	Other	880	995	1,290	1,070	1,210	1,195
Offers	Asian	3,150	3,365	3,400	2,920	2,975	3,185
	Black	3,345	3,235	2,995	2,485	2,485	2,570
	Mixed	880	890	805	700	725	815
	White	6,025	5,860	5,085	4,525	4,640	4,865
	Other	585	595	795	625	720	800
Offer rate	Asian	71.5%	64.8%	63.5%	61.6%	60.2%	68.2%
	Black	44.1%	37.2%	34.2%	32.3%	31.9%	36.7%
	Mixed	59.2%	53.2%	51.4%	50.0%	49.6%	61.2%
	White	60.9%	55.4%	54.3%	52.7%	52.1%	60.3%
	Other	66.6%	59.7%	61.7%	58.2%	59.6%	67.1%

Technical Notes and Definitions

UCAS undergraduate scheme

Adjustment

Adjustment allows applicants who have met and exceeded the terms of their conditional firm offer to seek and find a place at another provider whilst keeping their place at their original firm choice provider.

Clearing

Clearing is a route for applicants that are not placed and holding no offers to find a place on courses with vacancies.

Cycle year

The UCAS application cycle which runs from September to October the following year. For example the 2015 cycle runs from September 2014 through to October 2015.

End of cycle

The point in the cycle to which the numbers in this report refer, and the point at which the cycle is closed such that no more applications or offers can be made, and no more applicants can be placed. Numbers reported at the end of cycle exclude information on a small number of applicants who cancelled during the cycle.

Extra

Applicants who are unsuccessful in obtaining an offer or decline all offers may be eligible to apply through Extra, where they can apply to one further course at a time. Extra operates from 25 February until early July. It provides applicants who are eligible the possibility of obtaining an offer before exam results are published and Clearing starts.

June 30 deadline

The deadline for main scheme applications. Applicants who apply after this date will go directly into Clearing.

Record of Prior Acceptance (RPA)

RPA is an acceptance route used when a provider informs UCAS of applicants it has accepted outside of the normal application process (e.g. individuals who have applied directly to the provider).

Reporting groups

Ethnic group

High level grouping of ethnic origin as declared by the applicant: 'White', 'Black', 'Asian', 'Mixed', 'Other', 'Unknown'. Applicants who declare themselves as 'Unknown' ethnic origin are not reported in these tables, but are included in the associated csv data file.

POLAR3 quintile

Developed by HEFCE, POLAR3 classifies small areas across the UK into five groups according to their level of young participation in Higher Education. Each of these groups represents around 20 per cent of young people and is ranked from Quintile 1 (areas with the lowest young participation rates, considered as the most disadvantaged) to Quintile 5 (highest young participation rates, considered most advantaged). POLAR3 is based on the participation rates of young people between 2005 and 2009 who entered Higher Education between 2005-06 and 2010-11, therefore is most suitable for applicants aged 19 and under. These groups are assigned using the postcode declared by the applicant at the time of their application. If a UK postcode is invalid, considered unsafe for measurement or there is no link to Census geography possible then the applicant is not assigned to a quintile. Applicants with no POLAR3 quintile are not reported.

Sex

Sex as declared by the applicant.

SIMD quintile

Scottish index of multiple deprivation (SIMD) for 2012 identifies small area concentrations of multiple deprivation across all of Scotland, providing a relative measure of deprivation amongst 6505 small areas (data zones) based on 7 socio-economic domains. These small areas are classified into five groups ranked from Quintile 1 (considered the most deprived) to Quintile 5 (considered least deprived), with equal populations in each quintile. Quintiles are assigned using the postcode declared by the applicant, applicants declaring invalid postcodes are classified as 'Not assigned' and are not reported.

SIMD is only defined for applicants domiciled in Scotland, therefore any applicants domiciled outside of Scotland cannot be assigned to an SIMD quintile and so are not reported for this measure.

SIMD is only reported for providers in Scotland. Application and entry rates by SIMD are reported in the 2015 End of Cycle Report and the 2016 cycle January deadline application rate report.

Statistics reported in the tables

All placed applicants

The number of applicants placed for entry into higher education at the provider through one of their choices, including any choices made through Extra, or via Adjustment, Clearing or RPA.

All placed applicants per 10,000 population

The number of total UK domiciled 18 year old placed applicants for entry into higher education at the provider divided by the number of UK 18 year olds in the population, multiplied by 10,000. This gives the number of 18 year olds, for every 10,000 in the population, that were placed at the provider through one of their choices, including any choices made through Extra, or via Adjustment, Clearing or RPA. It is an alternative way of expressing the entry rate to a provider. By referencing the underlying population this statistic shows how the number of placed applicants is changing in relation to the available pool of potential applicants and so gives the chance that somebody from the group will be placed at a provider.

This statistic is only reported for 18 year olds.

Average offer rate

The offer rate that you might expect if the predicted grades and subject choice of applicants were the only factors that influenced whether an applicant was made an offer by the provider. The average offer rate is calculated by dividing applicants according to their specific combination of grades (for A levels the best three predicted grades are used, for BTECs, International Baccalaureate and Scottish Highers and Advanced Highers, predicted grades along with any grades already achieved upon applying are used) and subject choice. For each combination the number of main scheme offers is divided by the number of main scheme applications, to give an overall offer rate. This is then multiplied by the number of applications made by the group for which the average offer rate is being calculated (for example POLAR3 quintile 1), to give an average number of offers for that group. These average number of offers are then added together across all combinations of predicted grade and subject and divided by the number of main scheme applications from the group to give the average offer rate.

The average offer rate does not attempt to control for any other factors that may play a part in the decision to make an offer, such as the subject of the qualifications studied, their relevance to a course, or the grade in each subject; higher numbers of A levels being studied; the exact profile of grades predicted; personal statements; teacher references; interviews; or any other criteria (such as work experience or portfolios) that may be part of the admissions decision.

This statistic is only reported for 18 year olds.

Contribution of group to the average offer rate

The way in which the average offer rate is defined means that the pattern of application and offers of a group (for example POLAR3 quintile 1) will always contribute, in part, to the average offer rate for that group. When this contribution is large, the average offer rate will mainly reflect the patterns for the group, meaning that the value of the average offer rate will be similar to the offer rate, the percentage point difference statistic will be small, and any real difference between the offer rate and what might be expected given the predicted grades and subject choices of the applicants will be difficult to detect.

Values of the contribution of group to the average offer rate range between 0 and 1. The closer the value is to 1 the greater the contribution a group makes to its own average offer rate.

This statistic is only reported for 18 year olds.

Placed June deadline applicants

An applicant who has been placed for entry into higher education at the provider through a June deadline application.

Placed June deadline applicants per 10,000 population

The number of UK domiciled 18 year old placed June deadline applicants at the provider divided by the number of UK 18 year olds in the population, multiplied by 10,000. This gives the number of 18 year olds, for every 10,000 in the population, that were placed at the provider through one of their June deadline applications. It is an alternative way of expressing the entry rate to a provider, but for placed June deadline applicants only. By referencing the underlying population this statistic shows how the number of placed June deadline applicants is changing in relation to the available pool of potential 18 year old applicants and so gives the chance that somebody from the group will be placed at a provider through a June deadline application.

This statistic is only reported for 18 year olds.

June deadline applications

An application (or choice) to a course in higher education to the provider that is made by the June 30 deadline. Each applicant can make up to five choices this way. The number of June deadline applications does not include choices made through the following routes: Clearing, Extra, Adjustment and RPAs. Applications made to October deadline courses received after the October deadline are not included in these statistics.

June deadline applicants

The number of applicants that made at least one application to the provider by the June 30 deadline.

June deadline applicants per 10,000 population

The number of UK domiciled 18 year old June deadline applicants to the provider divided by the number of UK 18 year olds in the population, multiplied by 10,000. This gives the number of 18 year olds, for every 10,000 in the population, who applied by the June 30 deadline. It is equivalent to the application rate. By referencing the underlying population this statistic shows how the number of June deadline applicants is changing in relation to the available pool of potential 18 year old applicants and so gives the chance that somebody from the group will apply to a provider by the June 30 deadline.

This statistic is only reported for 18 year olds.

Offers

An offer is defined as a provider's decision in response to an application to offer a place to an applicant, often subject to the applicant satisfying academic and/or other criteria, via a June deadline application (i.e. does not cover choices made through the following routes: Clearing, Extra, Adjustment and RPAs).

Offer rate

The number of offers made divided by the number of June deadline applications. This gives the proportion of all June deadline applications to the provider that received an offer.

Percentage point difference between offer rate and average offer rate

The offer rate minus the average offer rate.

The percentage point difference can be compared to the expected range of statistical variation resulting from the calculation of the average offer rate using the Average Offer Rate Lookup Table. Where the value of the percentage point difference lies outside of this range, the percentage point difference may be considered to represent a real difference between the offer rate and the average offer rate.

Other definitions

Age

This analysis uses country-specific age definitions that align with the cut off points for school and college cohorts within the different administrations of the UK. For England and Wales, ages are defined on the 31 August, for Northern Ireland on the 1 July and for Scotland on the 28 February the following year. Defining ages in this way matches the assignment of children to school cohorts. For applicants outside of the UK a cohort cut off of 31 August has been used.

Provider

A higher education provider - a university or college.

UK domiciled

Declared area of permanent residence within England, Northern Ireland, Scotland and Wales. Applicants from the Channel Islands and Isle of Man are not included.