

M20 The University of Manchester

Cycle years: 2010 - 2015

Cycle Reference Point: End of Cycle

Applicant coverage: UK domiciled

Reporting groups: Sex, POLAR3, ethnic group

Applicant statistics: June deadline applicants, placed June deadline applicants, all placed applicants, June deadline applicants per 10,000 population, placed June deadline applicants per 10,000 population, all placed applicants per 10,000 population

Application statistics: June deadline applications, offers, offer rate, average offer rate, percentage point difference between offer rate and average offer rate, contribution of group to the average offer rate

Non-disclosure controls: To avoid the disclosure of information about any individual the following measures are taken

- Applicants, placed applicants, applications and offers are rounded to the nearest 5.
- Applicants/placed applicants per 10,000 population figures are reported as 0 if the applicant/placed applicant figures are rounded to 0.
- All statistics related to the offer rate are not reported when the number of applications for a group is less than 10. The percentage point difference between the offer rate and the average offer rate is not reported when the number of applications for a group is less than 50.
- Offer rates are reported as 0% if there are fewer than 5 offers, and 100% if the number of offers is within 5 of the number of applications. When the offer rate is reported as 0% or 100%, it is reported in italics.

Contents:

18 year old applicants:	P.1
18 year old applications:	P.2
18 year old applicants by sex:	P.3
18 year old applications by sex:	P.4
18 year old applicants by POLAR3 quintile:	P.7
18 year old applications by POLAR3 quintile:	P.8
18 year old applicants by ethnic group:	P.11
18 year old applications by ethnic group:	P.12
Applicants (all ages):	P.15
Applications (all ages):	P.16
Applicants (all ages) by sex:	P.17
Applications (all ages) by sex:	P.18
Applicants (all ages) by POLAR3 quintile:	P.19
Applications (all ages) by POLAR3 quintile:	P.20
Applicants (all ages) by ethnic group:	P.21
Applications (all ages) by ethnic group:	P.22

P.1 18 year old applicants

Statistic	2010	2011	2012	2013	2014	2015
June deadline applicants	25,970	25,550	23,640	24,295	26,540	28,095
Placed June deadline applicants	4,240	3,730	3,595	3,855	3,955	3,965
All placed applicants	4,460	3,850	3,960	4,245	4,415	4,455
June deadline applicants per 10,000 population	328.9	331.8	305.6	319.3	352.4	366.7
Placed June deadline applicants per 10,000	53.7	48.4	46.5	50.7	52.5	51.7
All placed applicants per 10,000 population	56.5	50.0	51.2	55.8	58.6	58.2

P.2 18 year old applications

Statistic	2010	2011	2012	2013	2014	2015
June deadline applications	27,355	26,740	24,610	25,220	27,525	29,155
Offers	19,250	18,360	16,955	18,320	19,985	21,395
Offer rate	70.4%	68.7%	68.9%	72.6%	72.6%	73.4%

P.3 18 year old applicants by sex

Statistic	Sex	2010	2011	2012	2013	2014	2015
June deadline applicants	Men	11,745	11,475	10,495	11,255	12,075	12,735
	Women	14,225	14,070	13,145	13,040	14,460	15,360
Placed June deadline applicants	Men	1,965	1,705	1,660	1,815	1,820	1,785
	Women	2,280	2,025	1,935	2,040	2,140	2,180
All placed applicants	Men	2,075	1,755	1,810	1,985	2,025	1,990
	Women	2,385	2,095	2,150	2,260	2,390	2,465
June deadline applicants per 10,000 population	Men	292.4	291.7	264.7	288.3	311.9	324.5
	Women	366.7	373.7	348.8	351.9	395.1	411.0
Placed June deadline applicants per 10,000 population	Men	48.9	43.4	41.8	46.5	47.0	45.4
	Women	58.7	53.7	51.3	55.1	58.4	58.3
All placed applicants per 10,000 population	Men	51.7	44.6	45.6	50.9	52.3	50.8
	Women	61.5	55.6	57.1	61.0	65.3	66.0

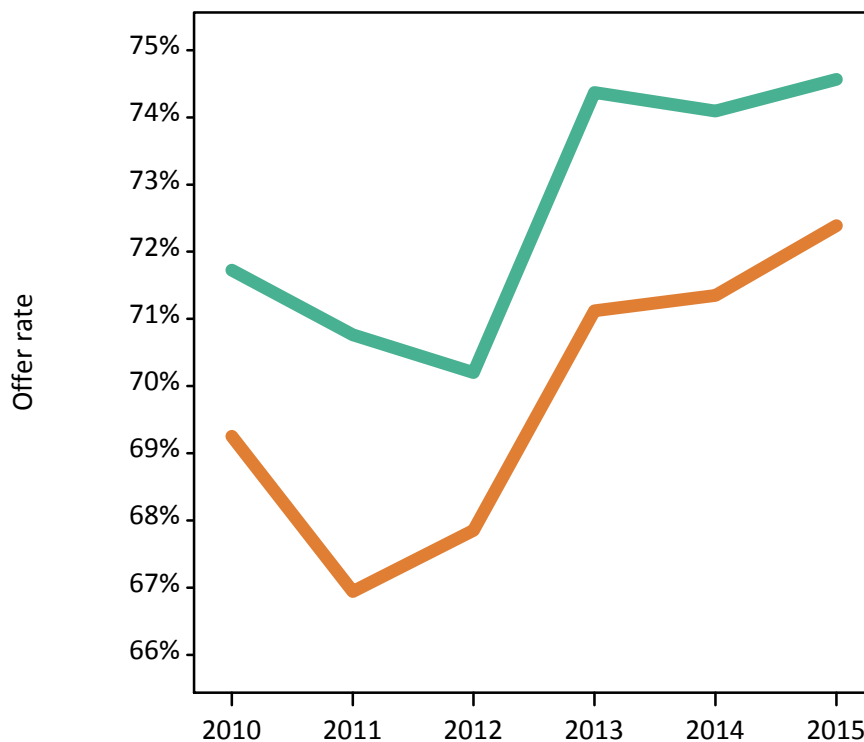
P.4 18 year old applications by sex

Statistic	Sex	2010	2011	2012	2013	2014	2015
June deadline applications	Men	12,380	12,085	10,955	11,740	12,565	13,260
	Women	14,975	14,655	13,650	13,480	14,960	15,895
Offers	Men	8,880	8,550	7,690	8,730	9,310	9,885
	Women	10,370	9,810	9,265	9,585	10,675	11,505
Offer rate	Men	71.7%	70.8%	70.2%	74.4%	74.1%	74.6%
	Women	69.3%	66.9%	67.9%	71.1%	71.4%	72.4%
Average offer rate	Men	72.3%	71.3%	71.0%	74.9%	75.0%	75.2%
	Women	68.8%	66.5%	67.2%	70.6%	70.6%	71.9%
Percentage point difference between offer rate and average offer rate	Men	-0.5	-0.5	-0.8	-0.5	-0.9	-0.6
	Women	0.4	0.4	0.7	0.5	0.8	0.5
Contribution of group to the average offer rate	Men	0.589	0.593	0.584	0.598	0.596	0.599
	Women	0.661	0.665	0.667	0.650	0.661	0.666

P.5 18 year old offer rate by sex

Note: The line for a group is not plotted when that group made fewer than 10 applications in any of the years from 2010-2015.

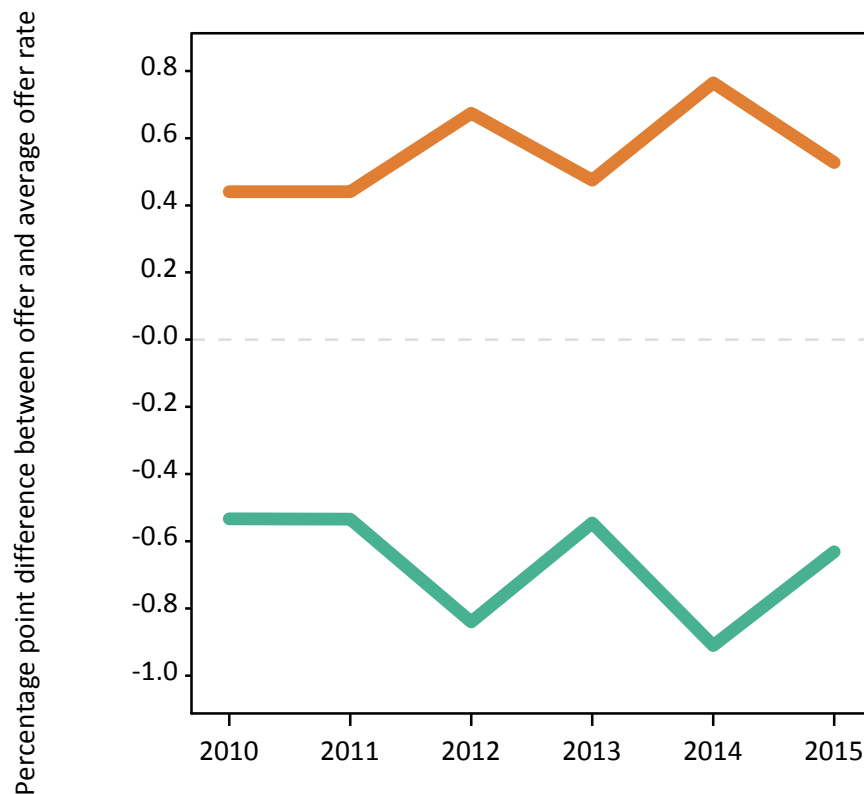
Men
Women



P.6 Percentage point difference between 18 year old offer rate and average offer rate by sex

Note: The line for a group is not plotted when that group made fewer than 50 applications in any of the years from 2010-2015.

Men
Women



P.7 18 year old applicants by POLAR3 quintile

Statistic	POLAR3 quintile	2010	2011	2012	2013	2014	2015
June deadline applicants	Quintile 1	2,065	1,990	1,905	2,095	2,390	2,435
	Quintile 2	3,235	3,215	3,015	3,195	3,490	3,730
	Quintile 3	4,465	4,315	4,075	4,285	4,730	5,130
	Quintile 4	6,055	5,825	5,440	5,575	6,045	6,495
	Quintile 5	10,100	10,140	9,160	9,110	9,840	10,240
Placed June deadline applicants	Quintile 1	320	235	280	315	340	315
	Quintile 2	515	450	450	475	485	495
	Quintile 3	700	640	615	695	670	700
	Quintile 4	995	870	815	905	915	960
	Quintile 5	1,700	1,530	1,435	1,460	1,540	1,485
All placed applicants	Quintile 1	325	245	305	345	370	340
	Quintile 2	545	465	490	520	535	555
	Quintile 3	735	660	685	755	750	795
	Quintile 4	1,040	890	895	1,005	1,015	1,070
	Quintile 5	1,800	1,575	1,585	1,615	1,735	1,685
June deadline applicants per 10,000 population	Quintile 1	139.4	138.4	133.9	150.3	171.9	173.9
	Quintile 2	210.5	214.0	201.2	216.9	238.5	251.3
	Quintile 3	280.9	280.5	264.0	281.0	314.2	334.1
	Quintile 4	380.2	372.0	342.8	356.5	392.3	414.8
	Quintile 5	596.0	612.5	545.3	550.8	603.3	611.7
Placed June deadline applicants per 10,000 population	Quintile 1	21.6	16.3	19.5	22.5	24.4	22.3
	Quintile 2	33.4	29.9	30.1	32.2	33.3	33.3
	Quintile 3	44.1	41.6	39.7	45.6	44.5	45.6
	Quintile 4	62.5	55.4	51.4	57.9	59.4	61.5
	Quintile 5	100.4	92.4	85.3	88.4	94.4	88.6
All placed applicants per 10,000 population	Quintile 1	22.1	17.2	21.5	24.9	26.7	24.4
	Quintile 2	35.4	31.0	32.7	35.2	36.6	37.4
	Quintile 3	46.3	43.0	44.2	49.4	49.8	51.6
	Quintile 4	65.4	56.9	56.3	64.3	65.9	68.2
	Quintile 5	106.3	95.1	94.3	97.8	106.5	100.8

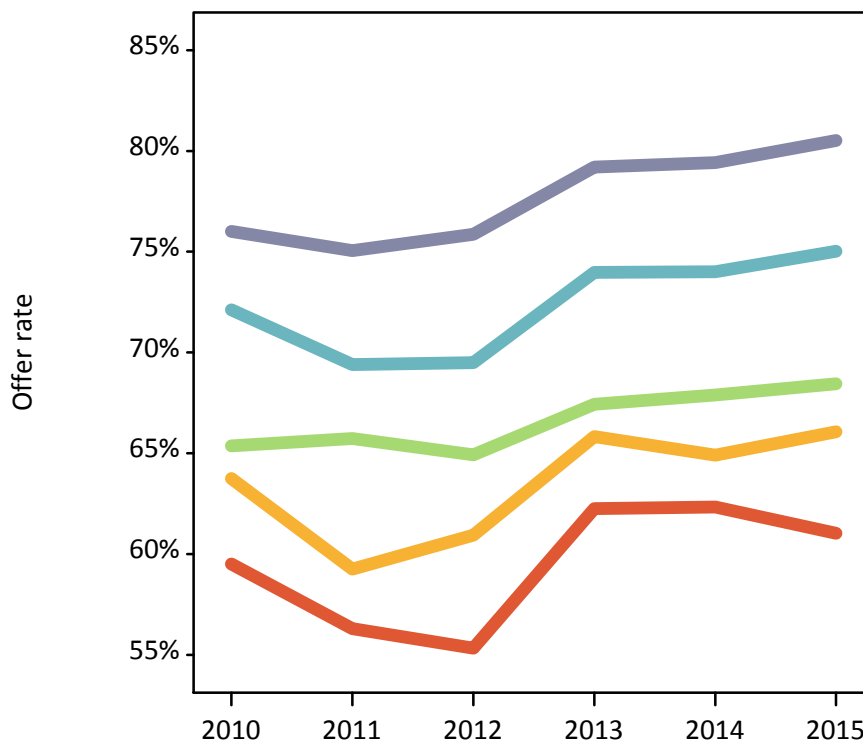
P.8 18 year old applications by POLAR3 quintile

Statistic	POLAR3 quintile	2010	2011	2012	2013	2014	2015
June deadline applications	Quintile 1	2,215	2,080	2,010	2,200	2,525	2,555
	Quintile 2	3,465	3,420	3,170	3,370	3,660	3,900
	Quintile 3	4,770	4,570	4,285	4,480	4,930	5,330
	Quintile 4	6,340	6,100	5,660	5,765	6,250	6,730
	Quintile 5	10,520	10,505	9,445	9,375	10,110	10,575
Offers	Quintile 1	1,315	1,170	1,110	1,370	1,575	1,560
	Quintile 2	2,210	2,025	1,930	2,215	2,375	2,575
	Quintile 3	3,115	3,005	2,780	3,020	3,345	3,650
	Quintile 4	4,570	4,235	3,935	4,265	4,625	5,050
	Quintile 5	7,995	7,885	7,165	7,425	8,030	8,515
Offer rate	Quintile 1	59.5%	56.3%	55.3%	62.3%	62.3%	61.0%
	Quintile 2	63.8%	59.3%	60.9%	65.8%	64.9%	66.1%
	Quintile 3	65.4%	65.7%	64.9%	67.4%	67.9%	68.5%
	Quintile 4	72.1%	69.4%	69.5%	74.0%	74.0%	75.0%
	Quintile 5	76.0%	75.1%	75.9%	79.2%	79.4%	80.5%
Average offer rate	Quintile 1	61.9%	59.3%	57.9%	63.2%	63.2%	64.3%
	Quintile 2	65.1%	61.2%	61.9%	66.8%	66.5%	66.9%
	Quintile 3	66.4%	65.6%	66.0%	68.6%	69.0%	69.7%
	Quintile 4	71.6%	69.3%	70.1%	73.8%	73.9%	74.9%
	Quintile 5	74.9%	74.0%	74.1%	78.2%	78.2%	78.9%
Percentage point difference between offer rate and average offer rate	Quintile 1	-2.4	-3.0	-2.6	-1.0	-0.9	-3.2
	Quintile 2	-1.4	-1.9	-1.0	-1.0	-1.6	-0.8
	Quintile 3	-1.0	0.1	-1.1	-1.2	-1.1	-1.2
	Quintile 4	0.6	0.1	-0.6	0.2	0.1	0.2
	Quintile 5	1.1	1.1	1.8	1.0	1.3	1.6
Contribution of group to the average offer rate	Quintile 1	0.152	0.152	0.165	0.165	0.164	0.156
	Quintile 2	0.186	0.200	0.199	0.198	0.191	0.189
	Quintile 3	0.226	0.221	0.227	0.229	0.225	0.227
	Quintile 4	0.273	0.271	0.275	0.267	0.269	0.269
	Quintile 5	0.444	0.451	0.447	0.429	0.424	0.420

P.9 18 year old offer rate by POLAR3 quintile

Note: The line for a group is not plotted when that group made fewer than 10 applications in any of the years from 2010-2015.

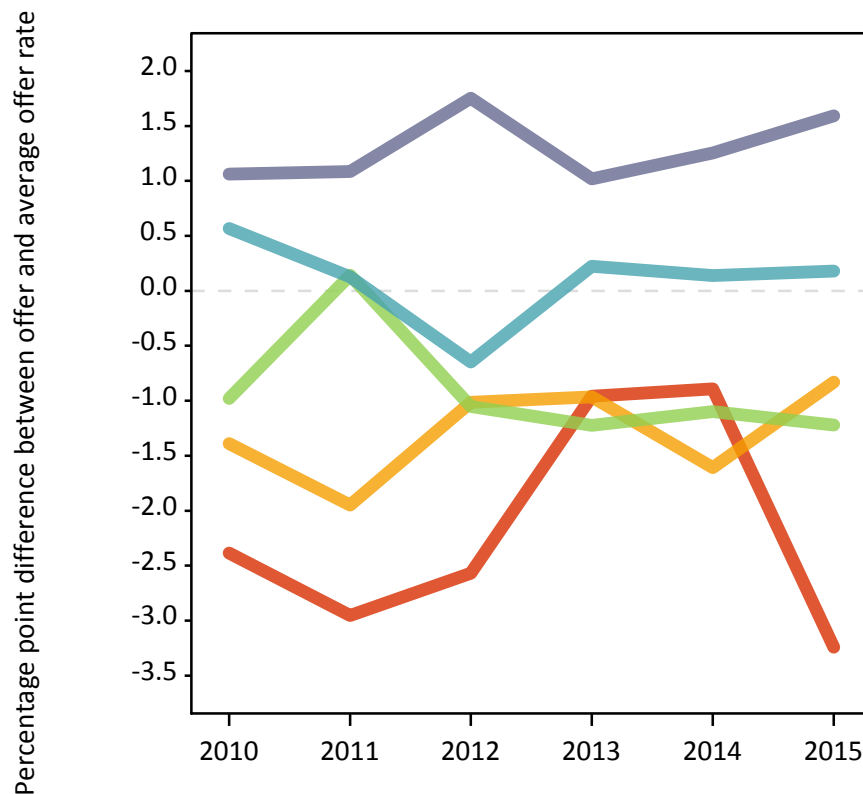
- Quintile 1
- Quintile 2
- Quintile 3
- Quintile 4
- Quintile 5



P.10 Percentage point difference between 18 year old offer rate and average offer rate by POLAR3 quintile

Note: The line for a group is not plotted when that group made fewer than 50 applications in any of the years from 2010-2015.

- Quintile 1
- Quintile 2
- Quintile 3
- Quintile 4
- Quintile 5



P.11 18 year old applicants by ethnic group

Statistic	Ethnic group	2010	2011	2012	2013	2014	2015
June deadline applicants	Asian	3,595	3,410	3,320	3,550	3,995	4,085
	Black	780	755	790	930	1,170	1,330
	Mixed	935	975	955	1,030	1,145	1,285
	White	20,255	20,030	18,130	18,370	19,695	20,780
	Other	200	215	275	285	405	420
Placed June deadline applicants	Asian	525	420	450	485	515	525
	Black	85	65	95	105	115	160
	Mixed	165	150	160	160	180	205
	White	3,385	3,040	2,810	3,040	3,055	2,990
	Other	40	35	45	50	65	55
All placed applicants	Asian	565	435	530	560	605	620
	Black	90	70	115	130	135	190
	Mixed	170	160	180	175	210	245
	White	3,550	3,120	3,045	3,305	3,355	3,295
	Other	45	40	55	55	75	60
June deadline applicants per 10,000 population	Asian	581.7	541.4	512.8	537.9	588.8	577.3
	Black	297.2	276.9	280.2	312.9	385.7	417.3
	Mixed	403.1	403.0	366.6	380.6	398.3	416.8
	White	302.0	309.4	280.8	291.9	319.3	333.5
	Other	259.8	267.9	311.9	313.2	433.0	436.1
Placed June deadline applicants per 10,000 population	Asian	84.8	66.5	69.5	73.4	76.1	73.9
	Black	31.7	23.0	33.7	36.0	38.6	49.7
	Mixed	72.1	61.9	61.8	58.8	62.2	66.2
	White	50.5	47.0	43.5	48.3	49.5	48.0
	Other	52.0	44.4	50.9	52.9	70.9	55.0
All placed applicants per 10,000 population	Asian	91.1	69.2	81.7	84.8	89.5	87.9
	Black	34.4	26.3	41.5	43.5	44.9	60.3
	Mixed	73.8	65.6	69.1	65.1	73.0	80.1
	White	53.0	48.2	47.1	52.5	54.4	52.9
	Other	55.9	49.4	61.0	61.8	82.7	64.4

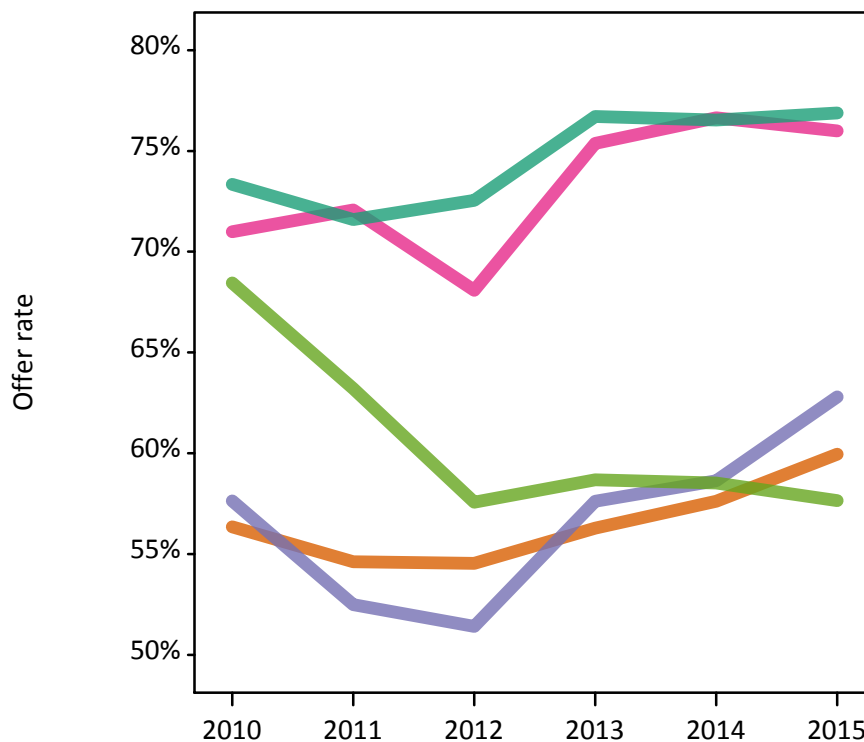
P.12 18 year old applications by ethnic group

Statistic	Ethnic group	2010	2011	2012	2013	2014	2015
June deadline applications	Asian	3,900	3,640	3,560	3,765	4,220	4,315
	Black	805	785	815	960	1,200	1,365
	Mixed	980	1,010	985	1,060	1,185	1,325
	White	21,225	20,910	18,770	18,990	20,345	21,505
	Other	225	230	295	305	435	445
Offers	Asian	2,200	1,990	1,940	2,120	2,435	2,590
	Black	465	410	420	550	705	855
	Mixed	695	730	670	800	910	1,005
	White	15,570	14,970	13,620	14,565	15,570	16,530
	Other	155	145	170	180	255	255
Offer rate	Asian	56.3%	54.6%	54.5%	56.3%	57.6%	59.9%
	Black	57.6%	52.5%	51.4%	57.6%	58.6%	62.8%
	Mixed	71.0%	72.1%	68.1%	75.4%	76.6%	76.0%
	White	73.3%	71.6%	72.5%	76.7%	76.5%	76.9%
	Other	68.4%	63.2%	57.6%	58.7%	58.5%	57.7%
Average offer rate	Asian	59.0%	56.6%	56.3%	57.5%	59.9%	61.6%
	Black	59.9%	56.4%	57.2%	61.0%	62.2%	64.4%
	Mixed	71.1%	71.7%	68.8%	75.2%	76.0%	75.9%
	White	72.8%	71.1%	71.9%	76.3%	75.9%	76.4%
	Other	66.2%	65.4%	60.8%	61.5%	62.1%	62.6%
Percentage point difference between offer rate and average offer rate	Asian	-2.6	-2.0	-1.7	-1.2	-2.3	-1.7
	Black	-2.2	-3.9	-5.8	-3.4	-3.5	-1.6
	Mixed	-0.1	0.4	-0.7	0.1	0.6	0.1
	White	0.5	0.5	0.7	0.4	0.7	0.5
	Other	2.2	-2.2	-3.2	-2.8	-3.6	-5.0
Contribution of group to the average offer rate	Asian	0.331	0.330	0.330	0.330	0.309	0.305
	Black	0.108	0.115	0.117	0.129	0.117	0.119
	Mixed	0.098	0.101	0.109	0.103	0.094	0.091
	White	0.820	0.826	0.811	0.804	0.788	0.784
	Other	0.081	0.072	0.102	0.080	0.081	0.077

P.13 18 year old offer rate by ethnic group

Note: The line for a group is not plotted when that group made fewer than 10 applications in any of the years from 2010-2015.

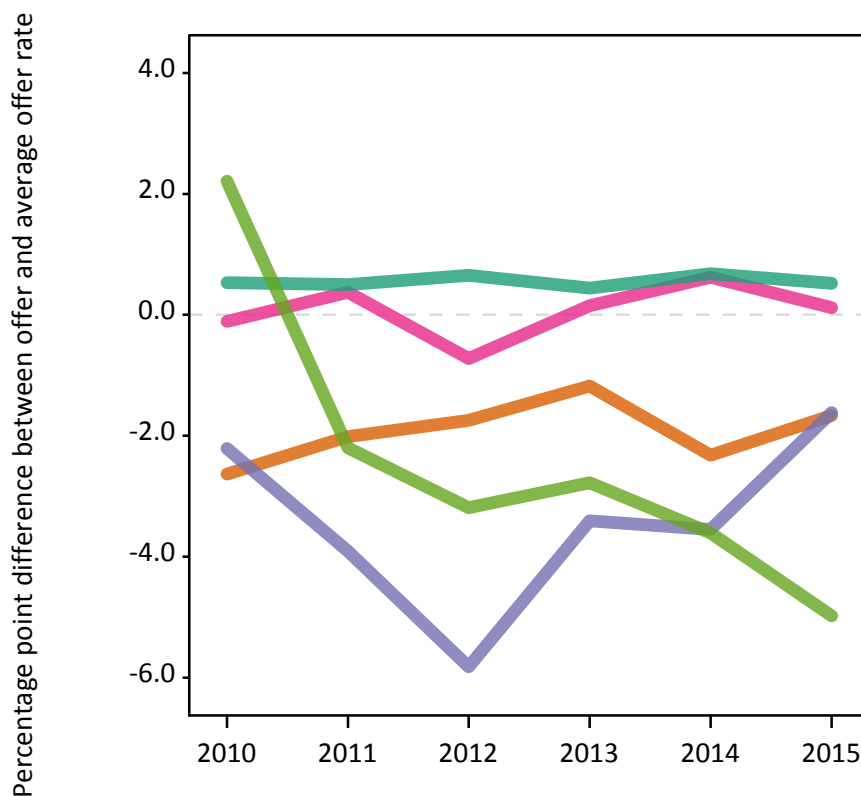
- Asian
- Black
- Mixed
- White
- Other



P.14 Percentage point difference between 18 year old offer rate and average offer rate by ethnic group

Note: The line for a group is not plotted when that group made fewer than 50 applications in any of the years from 2010-2015.

- Asian
- Black
- Mixed
- White
- Other



P.15 Applicants (all ages)

Statistic	2010	2011	2012	2013	2014	2015
June deadline applicants	41,370	40,620	36,460	38,365	41,315	42,935
Placed June deadline applicants	6,500	5,585	5,085	5,640	5,770	5,755
All placed applicants	6,870	5,830	5,690	6,295	6,500	6,565

P.16 Applications (all ages)

Statistic	2010	2011	2012	2013	2014	2015
June deadline applications	44,140	42,915	38,345	40,195	43,275	44,845
Offers	25,735	24,020	21,490	23,950	25,940	27,545
Offer rate	58.3%	56.0%	56.0%	59.6%	59.9%	61.4%

P.17 Applicants (all ages) by sex

Statistic	Sex	2010	2011	2012	2013	2014	2015
June deadline applicants	Men	18,270	17,910	15,955	17,285	18,350	19,220
	Women	23,100	22,710	20,505	21,080	22,970	23,715
Placed June deadline applicants	Men	2,945	2,550	2,345	2,620	2,595	2,575
	Women	3,555	3,040	2,740	3,020	3,170	3,180
All placed applicants	Men	3,120	2,640	2,620	2,905	2,935	2,950
	Women	3,750	3,190	3,070	3,390	3,565	3,620

P.18 Applications (all ages) by sex

Statistic	Sex	2010	2011	2012	2013	2014	2015
June deadline applications	Men	19,535	19,080	16,870	18,235	19,320	20,170
	Women	24,605	23,835	21,475	21,960	23,955	24,670
Offers	Men	11,850	11,345	9,920	11,495	12,175	12,875
	Women	13,885	12,675	11,570	12,455	13,765	14,670
Offer rate	Men	60.7%	59.5%	58.8%	63.0%	63.0%	63.8%
	Women	56.4%	53.2%	53.9%	56.7%	57.5%	59.5%

P.19 Applicants (all ages) by POLAR3 quintile

Statistic	POLAR3 quintile	2010	2011	2012	2013	2014	2015
June deadline applicants	Quintile 1	4,325	4,220	3,970	4,240	4,585	4,615
	Quintile 2	5,830	5,665	5,265	5,535	6,145	6,210
	Quintile 3	7,480	7,260	6,625	7,030	7,715	8,190
	Quintile 4	9,145	8,925	8,035	8,560	9,060	9,510
	Quintile 5	14,460	14,415	12,465	12,920	13,730	14,285
Placed June deadline applicants	Quintile 1	535	410	445	485	555	500
	Quintile 2	830	705	670	715	750	765
	Quintile 3	1,100	960	895	1,040	995	1,035
	Quintile 4	1,510	1,275	1,170	1,325	1,320	1,335
	Quintile 5	2,505	2,225	1,890	2,070	2,145	2,105
All placed applicants	Quintile 1	555	440	510	540	605	550
	Quintile 2	880	730	750	790	830	880
	Quintile 3	1,160	1,015	1,020	1,135	1,115	1,190
	Quintile 4	1,585	1,325	1,295	1,500	1,480	1,510
	Quintile 5	2,665	2,305	2,110	2,320	2,455	2,415

P.20 Applications (all ages) by POLAR3 quintile

Statistic	POLAR3 quintile	2010	2011	2012	2013	2014	2015
June deadline applications	Quintile 1	4,705	4,505	4,255	4,500	4,870	4,885
	Quintile 2	6,300	6,080	5,575	5,875	6,510	6,525
	Quintile 3	8,085	7,745	7,050	7,425	8,140	8,590
	Quintile 4	9,700	9,405	8,445	8,925	9,475	9,910
	Quintile 5	15,215	15,035	12,920	13,380	14,205	14,810
Offers	Quintile 1	1,950	1,670	1,555	1,905	2,160	2,160
	Quintile 2	3,045	2,760	2,510	2,900	3,230	3,370
	Quintile 3	4,240	3,955	3,570	4,015	4,420	4,790
	Quintile 4	6,020	5,505	4,975	5,570	6,010	6,405
	Quintile 5	10,415	10,060	8,825	9,525	10,075	10,745
Offer rate	Quintile 1	41.5%	37.0%	36.6%	42.3%	44.4%	44.2%
	Quintile 2	48.4%	45.4%	45.0%	49.3%	49.6%	51.7%
	Quintile 3	52.4%	51.0%	50.7%	54.1%	54.3%	55.8%
	Quintile 4	62.1%	58.5%	58.9%	62.4%	63.4%	64.6%
	Quintile 5	68.4%	66.9%	68.3%	71.2%	70.9%	72.6%

P.21 Applicants (all ages) by ethnic group

Statistic	Ethnic group	2010	2011	2012	2013	2014	2015
June deadline applicants	Asian	5,960	5,880	5,470	6,030	6,605	6,795
	Black	2,435	2,290	2,275	2,275	2,635	2,870
	Mixed	1,580	1,565	1,500	1,675	1,865	2,045
	White	30,580	30,095	26,300	27,440	29,190	30,025
	Other	420	430	600	640	725	815
Placed June deadline applicants	Asian	775	650	675	740	770	785
	Black	200	150	165	175	195	245
	Mixed	255	230	225	235	280	310
	White	5,140	4,440	3,900	4,365	4,380	4,265
	Other	65	70	70	80	95	90
All placed applicants	Asian	845	685	790	860	930	955
	Black	215	165	200	215	230	305
	Mixed	265	250	255	275	330	360
	White	5,390	4,600	4,285	4,790	4,835	4,755
	Other	75	75	95	95	115	105

P.22 Applications (all ages) by ethnic group

Statistic	Ethnic group	2010	2011	2012	2013	2014	2015
June deadline applications	Asian	6,470	6,315	5,880	6,425	7,040	7,195
	Black	2,600	2,420	2,430	2,380	2,745	2,975
	Mixed	1,685	1,655	1,575	1,745	1,950	2,130
	White	32,485	31,675	27,455	28,640	30,445	31,260
	Other	465	480	665	685	775	875
Offers	Asian	3,030	2,815	2,650	3,025	3,380	3,605
	Black	780	675	645	795	1,020	1,250
	Mixed	980	975	895	1,100	1,255	1,350
	White	20,465	19,130	16,850	18,560	19,735	20,705
	Other	230	225	260	290	365	395
Offer rate	Asian	46.8%	44.6%	45.1%	47.1%	48.0%	50.1%
	Black	30.0%	27.9%	26.5%	33.3%	37.3%	42.0%
	Mixed	58.0%	58.9%	56.8%	63.2%	64.2%	63.5%
	White	63.0%	60.4%	61.4%	64.8%	64.8%	66.2%
	Other	49.7%	46.6%	39.0%	42.1%	47.0%	45.4%

Technical Notes and Definitions

UCAS undergraduate scheme

Adjustment

Adjustment allows applicants who have met and exceeded the terms of their conditional firm offer to seek and find a place at another provider whilst keeping their place at their original firm choice provider.

Clearing

Clearing is a route for applicants that are not placed and holding no offers to find a place on courses with vacancies.

Cycle year

The UCAS application cycle which runs from September to October the following year. For example the 2015 cycle runs from September 2014 through to October 2015.

End of cycle

The point in the cycle to which the numbers in this report refer, and the point at which the cycle is closed such that no more applications or offers can be made, and no more applicants can be placed. Numbers reported at the end of cycle exclude information on a small number of applicants who cancelled during the cycle.

Extra

Applicants who are unsuccessful in obtaining an offer or decline all offers may be eligible to apply through Extra, where they can apply to one further course at a time. Extra operates from 25 February until early July. It provides applicants who are eligible the possibility of obtaining an offer before exam results are published and Clearing starts.

June 30 deadline

The deadline for main scheme applications. Applicants who apply after this date will go directly into Clearing.

Record of Prior Acceptance (RPA)

RPA is an acceptance route used when a provider informs UCAS of applicants it has accepted outside of the normal application process (e.g. individuals who have applied directly to the provider).

Reporting groups

Ethnic group

High level grouping of ethnic origin as declared by the applicant: 'White', 'Black', 'Asian', 'Mixed', 'Other', 'Unknown'. Applicants who declare themselves as 'Unknown' ethnic origin are not reported in these tables, but are included in the associated csv data file.

POLAR3 quintile

Developed by HEFCE, POLAR3 classifies small areas across the UK into five groups according to their level of young participation in Higher Education. Each of these groups represents around 20 per cent of young people and is ranked from Quintile 1 (areas with the lowest young participation rates, considered as the most disadvantaged) to Quintile 5 (highest young participation rates, considered most advantaged). POLAR3 is based on the participation rates of young people between 2005 and 2009 who entered Higher Education between 2005-06 and 2010-11, therefore is most suitable for applicants aged 19 and under. These groups are assigned using the postcode declared by the applicant at the time of their application. If a UK postcode is invalid, considered unsafe for measurement or there is no link to Census geography possible then the applicant is not assigned to a quintile. Applicants with no POLAR3 quintile are not reported.

Sex

Sex as declared by the applicant.

SIMD quintile

Scottish index of multiple deprivation (SIMD) for 2012 identifies small area concentrations of multiple deprivation across all of Scotland, providing a relative measure of deprivation amongst 6505 small areas (data zones) based on 7 socio-economic domains. These small areas are classified into five groups ranked from Quintile 1 (considered the most deprived) to Quintile 5 (considered least deprived), with equal populations in each quintile. Quintiles are assigned using the postcode declared by the applicant, applicants declaring invalid postcodes are classified as 'Not assigned' and are not reported.

SIMD is only defined for applicants domiciled in Scotland, therefore any applicants domiciled outside of Scotland cannot be assigned to an SIMD quintile and so are not reported for this measure.

SIMD is only reported for providers in Scotland. Application and entry rates by SIMD are reported in the 2015 End of Cycle Report and the 2016 cycle January deadline application rate report.

Statistics reported in the tables

All placed applicants

The number of applicants placed for entry into higher education at the provider through one of their choices, including any choices made through Extra, or via Adjustment, Clearing or RPA.

All placed applicants per 10,000 population

The number of total UK domiciled 18 year old placed applicants for entry into higher education at the provider divided by the number of UK 18 year olds in the population, multiplied by 10,000. This gives the number of 18 year olds, for every 10,000 in the population, that were placed at the provider through one of their choices, including any choices made through Extra, or via Adjustment, Clearing or RPA. It is an alternative way of expressing the entry rate to a provider. By referencing the underlying population this statistic shows how the number of placed applicants is changing in relation to the available pool of potential applicants and so gives the chance that somebody from the group will be placed at a provider.

This statistic is only reported for 18 year olds.

Average offer rate

The offer rate that you might expect if the predicted grades and subject choice of applicants were the only factors that influenced whether an applicant was made an offer by the provider. The average offer rate is calculated by dividing applicants according to their specific combination of grades (for A levels the best three predicted grades are used, for BTECs, International Baccalaureate and Scottish Highers and Advanced Highers, predicted grades along with any grades already achieved upon applying are used) and subject choice. For each combination the number of main scheme offers is divided by the number of main scheme applications, to give an overall offer rate. This is then multiplied by the number of applications made by the group for which the average offer rate is being calculated (for example POLAR3 quintile 1), to give an average number of offers for that group. These average number of offers are then added together across all combinations of predicted grade and subject and divided by the number of main scheme applications from the group to give the average offer rate.

The average offer rate does not attempt to control for any other factors that may play a part in the decision to make an offer, such as the subject of the qualifications studied, their relevance to a course, or the grade in each subject; higher numbers of A levels being studied; the exact profile of grades predicted; personal statements; teacher references; interviews; or any other criteria (such as work experience or portfolios) that may be part of the admissions decision.

This statistic is only reported for 18 year olds.

Contribution of group to the average offer rate

The way in which the average offer rate is defined means that the pattern of application and offers of a group (for example POLAR3 quintile 1) will always contribute, in part, to the average offer rate for that group. When this contribution is large, the average offer rate will mainly reflect the patterns for the group, meaning that the value of the average offer rate will be similar to the offer rate, the percentage point difference statistic will be small, and any real difference between the offer rate and what might be expected given the predicted grades and subject choices of the applicants will be difficult to detect.

Values of the contribution of group to the average offer rate range between 0 and 1. The closer the value is to 1 the greater the contribution a group makes to its own average offer rate.

This statistic is only reported for 18 year olds.

Placed June deadline applicants

An applicant who has been placed for entry into higher education at the provider through a June deadline application.

Placed June deadline applicants per 10,000 population

The number of UK domiciled 18 year old placed June deadline applicants at the provider divided by the number of UK 18 year olds in the population, multiplied by 10,000. This gives the number of 18 year olds, for every 10,000 in the population, that were placed at the provider through one of their June deadline applications. It is an alternative way of expressing the entry rate to a provider, but for placed June deadline applicants only. By referencing the underlying population this statistic shows how the number of placed June deadline applicants is changing in relation to the available pool of potential 18 year old applicants and so gives the chance that somebody from the group will be placed at a provider through a June deadline application.

This statistic is only reported for 18 year olds.

June deadline applications

An application (or choice) to a course in higher education to the provider that is made by the June 30 deadline. Each applicant can make up to five choices this way. The number of June deadline applications does not include choices made through the following routes: Clearing, Extra, Adjustment and RPAs. Applications made to October deadline courses received after the October deadline are not included in these statistics.

June deadline applicants

The number of applicants that made at least one application to the provider by the June 30 deadline.

June deadline applicants per 10,000 population

The number of UK domiciled 18 year old June deadline applicants to the provider divided by the number of UK 18 year olds in the population, multiplied by 10,000. This gives the number of 18 year olds, for every 10,000 in the population, who applied by the June 30 deadline. It is equivalent to the application rate. By referencing the underlying population this statistic shows how the number of June deadline applicants is changing in relation to the available pool of potential 18 year old applicants and so gives the chance that somebody from the group will apply to a provider by the June 30 deadline.

This statistic is only reported for 18 year olds.

Offers

An offer is defined as a provider's decision in response to an application to offer a place to an applicant, often subject to the applicant satisfying academic and/or other criteria, via a June deadline application (i.e. does not cover choices made through the following routes: Clearing, Extra, Adjustment and RPAs).

Offer rate

The number of offers made divided by the number of June deadline applications. This gives the proportion of all June deadline applications to the provider that received an offer.

Percentage point difference between offer rate and average offer rate

The offer rate minus the average offer rate.

The percentage point difference can be compared to the expected range of statistical variation resulting from the calculation of the average offer rate using the Average Offer Rate Lookup Table. Where the value of the percentage point difference lies outside of this range, the percentage point difference may be considered to represent a real difference between the offer rate and the average offer rate.

Other definitions

Age

This analysis uses country-specific age definitions that align with the cut off points for school and college cohorts within the different administrations of the UK. For England and Wales, ages are defined on the 31 August, for Northern Ireland on the 1 July and for Scotland on the 28 February the following year. Defining ages in this way matches the assignment of children to school cohorts. For applicants outside of the UK a cohort cut off of 31 August has been used.

Provider

A higher education provider - a university or college.

UK domiciled

Declared area of permanent residence within England, Northern Ireland, Scotland and Wales. Applicants from the Channel Islands and Isle of Man are not included.