

P80 University of Portsmouth

Cycle years: 2010 - 2015

Cycle Reference Point: End of Cycle

Applicant coverage: UK domiciled

Reporting groups: Sex, POLAR3, ethnic group

Applicant statistics: June deadline applicants, placed June deadline applicants, all placed applicants, June deadline applicants per 10,000 population, placed June deadline applicants per 10,000 population, all placed applicants per 10,000 population

Application statistics: June deadline applications, offers, offer rate, average offer rate, percentage point difference between offer rate and average offer rate, contribution of group to the average offer rate

Non-disclosure controls: To avoid the disclosure of information about any individual the following measures are taken

- Applicants, placed applicants, applications and offers are rounded to the nearest 5.
- Applicants/placed applicants per 10,000 population figures are reported as 0 if the applicant/placed applicant figures are rounded to 0.
- All statistics related to the offer rate are not reported when the number of applications for a group is less than 10. The percentage point difference between the offer rate and the average offer rate is not reported when the number of applications for a group is less than 50.
- Offer rates are reported as 0% if there are fewer than 5 offers, and 100% if the number of offers is within 5 of the number of applications. When the offer rate is reported as 0% or 100%, it is reported in italics.

Contents:

18 year old applicants:	P.1
18 year old applications:	P.2
18 year old applicants by sex:	P.3
18 year old applications by sex:	P.4
18 year old applicants by POLAR3 quintile:	P.7
18 year old applications by POLAR3 quintile:	P.8
18 year old applicants by ethnic group:	P.11
18 year old applications by ethnic group:	P.12
Applicants (all ages):	P.15
Applications (all ages):	P.16
Applicants (all ages) by sex:	P.17
Applications (all ages) by sex:	P.18
Applicants (all ages) by POLAR3 quintile:	P.19
Applications (all ages) by POLAR3 quintile:	P.20
Applicants (all ages) by ethnic group:	P.21
Applications (all ages) by ethnic group:	P.22

P.1 18 year old applicants

Statistic	2010	2011	2012	2013	2014	2015
June deadline applicants	15,495	14,995	14,365	14,785	16,840	15,550
Placed June deadline applicants	2,910	2,520	2,490	2,375	2,730	2,590
All placed applicants	3,125	2,655	2,650	2,470	2,850	2,735
June deadline applicants per 10,000 population	196.3	194.7	185.7	194.3	223.6	203.0
Placed June deadline applicants per 10,000	36.9	32.7	32.2	31.2	36.3	33.8
All placed applicants per 10,000 population	39.6	34.4	34.3	32.5	37.8	35.7

P.2 18 year old applications

Statistic	2010	2011	2012	2013	2014	2015
June deadline applications	16,285	15,730	15,090	15,410	17,470	16,135
Offers	14,170	13,680	14,135	14,735	16,860	15,355
Offer rate	87.0%	87.0%	93.7%	95.6%	96.5%	95.2%

P.3 18 year old applicants by sex

Statistic	Sex	2010	2011	2012	2013	2014	2015
June deadline applicants	Men	8,265	7,850	7,230	7,535	8,680	7,650
	Women	7,230	7,145	7,130	7,250	8,160	7,900
Placed June deadline applicants	Men	1,595	1,370	1,305	1,270	1,550	1,370
	Women	1,320	1,145	1,185	1,105	1,180	1,220
All placed applicants	Men	1,700	1,435	1,395	1,315	1,615	1,440
	Women	1,425	1,215	1,255	1,155	1,235	1,295
June deadline applicants per 10,000 population	Men	205.8	199.5	182.4	193.0	224.2	194.9
	Women	186.4	189.7	189.2	195.6	222.9	211.4
Placed June deadline applicants per 10,000 population	Men	39.7	34.9	32.9	32.5	40.0	34.9
	Women	34.0	30.5	31.5	29.8	32.3	32.6
All placed applicants per 10,000 population	Men	42.3	36.5	35.2	33.6	41.7	36.6
	Women	36.7	32.3	33.3	31.2	33.7	34.7

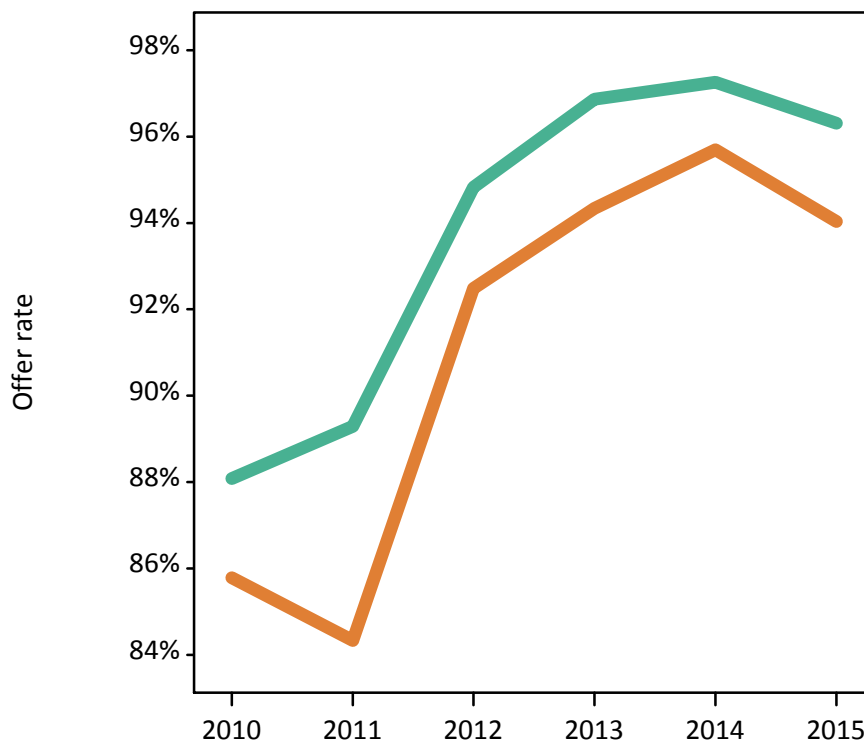
P.4 18 year old applications by sex

Statistic	Sex	2010	2011	2012	2013	2014	2015
June deadline applications	Men	8,725	8,345	7,675	7,905	9,055	7,970
	Women	7,560	7,385	7,415	7,505	8,410	8,165
Offers	Men	7,685	7,455	7,275	7,660	8,810	7,675
	Women	6,485	6,225	6,860	7,080	8,050	7,680
Offer rate	Men	88.1%	89.3%	94.8%	96.9%	97.3%	96.3%
	Women	85.8%	84.3%	92.5%	94.3%	95.7%	94.0%
Average offer rate	Men	88.2%	89.0%	94.6%	96.7%	97.2%	96.3%
	Women	85.7%	84.6%	92.7%	94.5%	95.7%	94.1%
Percentage point difference between offer rate and average offer rate	Men	-0.1	0.3	0.2	0.2	0.0	0.1
	Women	0.1	-0.3	-0.2	-0.2	-0.0	-0.1
Contribution of group to the average offer rate	Men	0.652	0.653	0.641	0.646	0.653	0.634
	Women	0.599	0.608	0.629	0.627	0.627	0.642

P.5 18 year old offer rate by sex

Note: The line for a group is not plotted when that group made fewer than 10 applications in any of the years from 2010-2015.

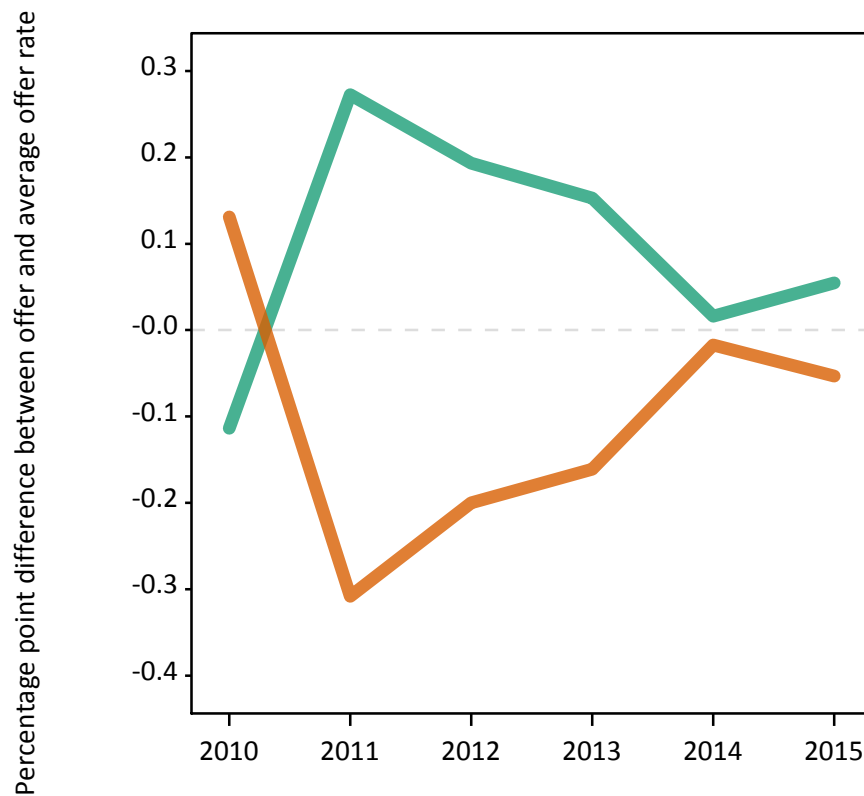
Men
Women



P.6 Percentage point difference between 18 year old offer rate and average offer rate by sex

Note: The line for a group is not plotted when that group made fewer than 50 applications in any of the years from 2010-2015.

Men
Women



P.7 18 year old applicants by POLAR3 quintile

Statistic	POLAR3 quintile	2010	2011	2012	2013	2014	2015
June deadline applicants	Quintile 1	1,355	1,330	1,325	1,455	1,740	1,620
	Quintile 2	2,170	2,085	2,030	2,095	2,495	2,410
	Quintile 3	3,045	3,010	2,930	3,105	3,490	3,260
	Quintile 4	4,005	3,875	3,680	3,815	4,290	3,865
	Quintile 5	4,895	4,675	4,365	4,290	4,795	4,355
Placed June deadline applicants	Quintile 1	230	220	245	260	305	275
	Quintile 2	435	345	385	355	425	440
	Quintile 3	560	500	515	495	560	545
	Quintile 4	765	625	635	580	680	660
	Quintile 5	910	825	705	680	760	660
All placed applicants	Quintile 1	245	230	260	275	320	290
	Quintile 2	460	365	405	370	440	460
	Quintile 3	605	530	550	525	585	575
	Quintile 4	815	655	680	600	710	695
	Quintile 5	995	870	750	700	790	705
June deadline applicants per 10,000 population	Quintile 1	91.5	92.5	93.0	104.3	125.1	115.6
	Quintile 2	141.0	138.7	135.5	142.1	170.5	162.4
	Quintile 3	191.5	195.7	189.8	203.7	232.0	212.4
	Quintile 4	251.6	247.3	231.9	244.0	278.4	246.9
	Quintile 5	288.7	282.3	259.9	259.6	293.9	260.2
Placed June deadline applicants per 10,000 population	Quintile 1	15.5	15.4	17.2	18.8	22.1	19.7
	Quintile 2	28.4	22.8	25.5	24.0	29.0	29.6
	Quintile 3	35.3	32.6	33.5	32.6	37.1	35.6
	Quintile 4	48.2	40.0	40.1	37.0	44.3	42.2
	Quintile 5	53.8	49.8	41.8	41.2	46.5	39.5
All placed applicants per 10,000 population	Quintile 1	16.6	15.9	18.2	19.6	23.1	20.8
	Quintile 2	29.9	24.2	27.1	25.1	30.2	31.1
	Quintile 3	38.0	34.5	35.6	34.4	38.8	37.4
	Quintile 4	51.1	41.9	42.9	38.3	46.1	44.5
	Quintile 5	58.8	52.6	44.6	42.3	48.4	42.1

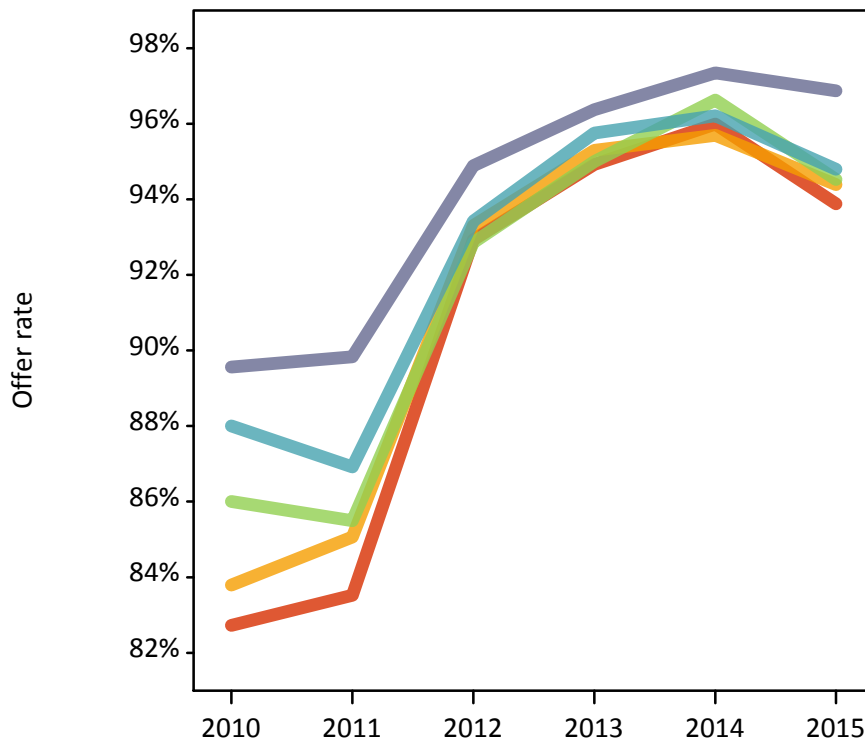
P.8 18 year old applications by POLAR3 quintile

Statistic	POLAR3 quintile	2010	2011	2012	2013	2014	2015
June deadline applications	Quintile 1	1,460	1,425	1,430	1,555	1,820	1,700
	Quintile 2	2,310	2,230	2,165	2,190	2,625	2,530
	Quintile 3	3,215	3,160	3,080	3,220	3,620	3,395
	Quintile 4	4,220	4,045	3,860	3,980	4,435	3,995
	Quintile 5	5,060	4,850	4,520	4,440	4,935	4,475
Offers	Quintile 1	1,205	1,190	1,330	1,475	1,750	1,595
	Quintile 2	1,935	1,895	2,020	2,090	2,510	2,390
	Quintile 3	2,765	2,700	2,860	3,060	3,500	3,210
	Quintile 4	3,715	3,515	3,605	3,810	4,270	3,790
	Quintile 5	4,530	4,360	4,290	4,280	4,805	4,335
Offer rate	Quintile 1	82.7%	83.5%	92.9%	94.9%	96.0%	93.9%
	Quintile 2	83.8%	85.1%	93.3%	95.3%	95.7%	94.4%
	Quintile 3	86.0%	85.5%	92.9%	95.0%	96.6%	94.5%
	Quintile 4	88.0%	86.9%	93.4%	95.8%	96.2%	94.8%
	Quintile 5	89.6%	89.8%	94.9%	96.4%	97.3%	96.9%
Average offer rate	Quintile 1	83.9%	84.1%	92.2%	94.6%	95.7%	94.6%
	Quintile 2	85.5%	85.4%	93.0%	95.1%	96.0%	94.2%
	Quintile 3	85.8%	86.1%	93.5%	95.2%	96.4%	95.0%
	Quintile 4	87.4%	87.2%	93.7%	95.7%	96.4%	95.1%
	Quintile 5	89.0%	88.9%	94.6%	96.5%	97.3%	96.0%
Percentage point difference between offer rate and average offer rate	Quintile 1	-1.1	-0.6	0.7	0.3	0.3	-0.7
	Quintile 2	-1.7	-0.3	0.3	0.2	-0.3	0.1
	Quintile 3	0.2	-0.6	-0.7	-0.2	0.2	-0.5
	Quintile 4	0.6	-0.3	-0.3	0.1	-0.2	-0.3
	Quintile 5	0.5	1.0	0.3	-0.1	0.0	0.8
Contribution of group to the average offer rate	Quintile 1	0.161	0.170	0.168	0.172	0.166	0.169
	Quintile 2	0.203	0.210	0.209	0.202	0.203	0.209
	Quintile 3	0.254	0.256	0.265	0.265	0.256	0.261
	Quintile 4	0.309	0.312	0.310	0.307	0.298	0.293
	Quintile 5	0.367	0.369	0.356	0.350	0.334	0.332

P.9 18 year old offer rate by POLAR3 quintile

Note: The line for a group is not plotted when that group made fewer than 10 applications in any of the years from 2010-2015.

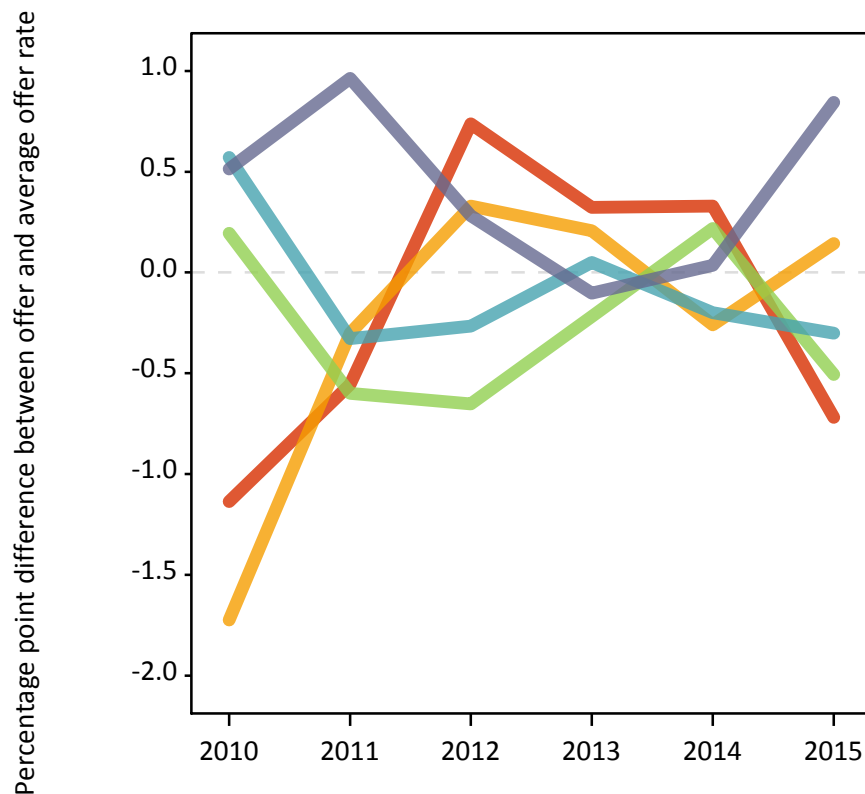
- Quintile 1
- Quintile 2
- Quintile 3
- Quintile 4
- Quintile 5



P.10 Percentage point difference between 18 year old offer rate and average offer rate by POLAR3 quintile

Note: The line for a group is not plotted when that group made fewer than 50 applications in any of the years from 2010-2015.

- Quintile 1
- Quintile 2
- Quintile 3
- Quintile 4
- Quintile 5



P.11 18 year old applicants by ethnic group

Statistic	Ethnic group	2010	2011	2012	2013	2014	2015
June deadline applicants	Asian	920	1,010	995	1,080	1,465	1,310
	Black	750	830	835	1,140	1,525	1,430
	Mixed	505	540	520	580	725	745
	White	13,135	12,445	11,815	11,760	12,835	11,760
	Other	115	115	150	180	240	255
Placed June deadline applicants	Asian	155	170	130	145	210	210
	Black	115	120	125	190	260	240
	Mixed	95	85	100	90	115	130
	White	2,515	2,120	2,105	1,920	2,115	1,965
	Other	20	20	20	25	25	35
All placed applicants	Asian	200	185	150	160	230	235
	Black	135	125	140	205	285	260
	Mixed	105	90	110	95	125	135
	White	2,645	2,225	2,215	1,975	2,175	2,060
	Other	20	25	25	30	25	40
June deadline applicants per 10,000 population	Asian	149.0	159.9	154.0	163.6	215.7	185.3
	Black	287.3	303.2	296.5	384.0	503.1	448.8
	Mixed	217.5	223.8	198.9	214.5	252.7	242.0
	White	195.9	192.2	183.0	186.9	208.0	188.7
	Other	152.0	139.5	168.4	196.3	257.9	263.8
Placed June deadline applicants per 10,000 population	Asian	24.9	26.7	20.2	22.0	30.7	29.4
	Black	44.3	43.2	45.1	63.7	86.1	75.7
	Mixed	41.0	35.1	38.0	32.9	40.7	41.8
	White	37.5	32.8	32.6	30.5	34.3	31.6
	Other	23.4	25.9	22.6	28.7	25.8	38.4
All placed applicants per 10,000 population	Asian	32.4	29.7	23.5	24.4	33.6	32.9
	Black	51.2	45.4	50.1	69.7	94.7	81.1
	Mixed	45.8	37.2	41.5	34.4	43.8	43.8
	White	39.5	34.4	34.3	31.4	35.2	33.0
	Other	27.3	28.4	27.1	30.9	27.9	41.5

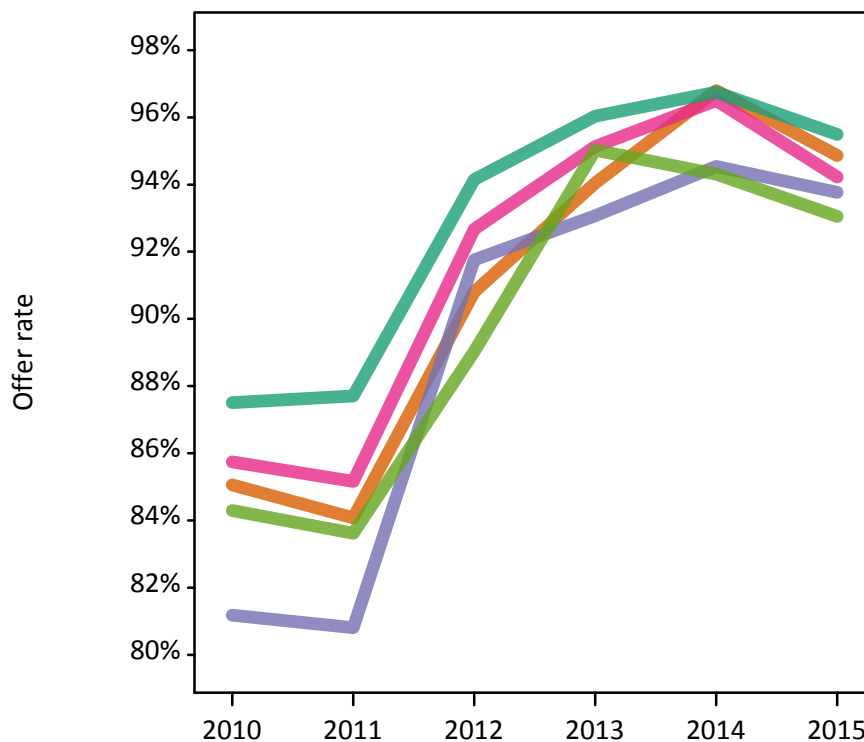
P.12 18 year old applications by ethnic group

Statistic	Ethnic group	2010	2011	2012	2013	2014	2015
June deadline applications	Asian	950	1,060	1,035	1,110	1,500	1,365
	Black	765	845	850	1,155	1,540	1,445
	Mixed	520	565	530	595	745	760
	White	13,865	13,085	12,465	12,325	13,395	12,250
	Other	120	115	155	180	245	260
Offers	Asian	810	890	940	1,045	1,450	1,295
	Black	620	680	780	1,075	1,455	1,355
	Mixed	445	480	495	565	720	720
	White	12,135	11,475	11,735	11,835	12,960	11,700
	Other	100	95	140	170	230	240
Offer rate	Asian	85.1%	84.1%	90.8%	94.0%	96.8%	94.9%
	Black	81.2%	80.8%	91.8%	93.1%	94.5%	93.8%
	Mixed	85.7%	85.2%	92.7%	95.1%	96.5%	94.2%
	White	87.5%	87.7%	94.1%	96.0%	96.8%	95.5%
	Other	84.3%	83.6%	89.0%	95.0%	94.3%	93.1%
Average offer rate	Asian	85.3%	84.0%	91.7%	94.6%	97.0%	95.5%
	Black	83.0%	81.3%	92.3%	94.6%	95.6%	94.5%
	Mixed	85.5%	85.9%	92.8%	96.1%	95.9%	94.3%
	White	87.4%	87.7%	94.0%	95.8%	96.6%	95.3%
	Other	85.3%	83.5%	90.3%	94.8%	95.9%	91.7%
Percentage point difference between offer rate and average offer rate	Asian	-0.3	0.1	-0.9	-0.6	-0.2	-0.6
	Black	-1.8	-0.5	-0.5	-1.5	-1.0	-0.8
	Mixed	0.3	-0.7	-0.1	-1.0	0.6	-0.0
	White	0.1	0.0	0.1	0.2	0.1	0.2
	Other	-1.0	0.1	-1.2	0.2	-1.6	1.4
Contribution of group to the average offer rate	Asian	0.204	0.195	0.196	0.198	0.179	0.187
	Black	0.155	0.168	0.160	0.172	0.178	0.182
	Mixed	0.109	0.107	0.106	0.102	0.099	0.107
	White	0.875	0.858	0.854	0.831	0.800	0.794
	Other	0.101	0.086	0.119	0.080	0.081	0.098

P.13 18 year old offer rate by ethnic group

Note: The line for a group is not plotted when that group made fewer than 10 applications in any of the years from 2010-2015.

- Asian
- Black
- Mixed
- White
- Other



P.14 Percentage point difference between 18 year old offer rate and average offer rate by ethnic group

Note: The line for a group is not plotted when that group made fewer than 50 applications in any of the years from 2010-2015.

- Asian
- Black
- Mixed
- White
- Other



P.15 Applicants (all ages)

Statistic	2010	2011	2012	2013	2014	2015
June deadline applicants	25,555	26,065	23,625	24,990	28,020	26,125
Placed June deadline applicants	4,870	4,600	4,435	4,490	4,965	4,765
All placed applicants	5,270	4,885	4,830	4,775	5,285	5,140

P.16 Applications (all ages)

Statistic	2010	2011	2012	2013	2014	2015
June deadline applications	27,420	27,795	25,125	26,385	29,465	27,465
Offers	21,320	21,380	21,720	23,405	26,870	24,410
Offer rate	77.8%	76.9%	86.4%	88.7%	91.2%	88.9%

P.17 Applicants (all ages) by sex

Statistic	Sex	2010	2011	2012	2013	2014	2015
June deadline applicants	Men	13,870	13,840	12,430	13,240	14,860	13,495
	Women	11,685	12,225	11,190	11,745	13,160	12,630
Placed June deadline applicants	Men	2,660	2,540	2,480	2,470	2,870	2,645
	Women	2,210	2,065	1,955	2,020	2,100	2,120
All placed applicants	Men	2,870	2,660	2,685	2,615	3,035	2,825
	Women	2,400	2,230	2,145	2,160	2,250	2,315

P.18 Applications (all ages) by sex

Statistic	Sex	2010	2011	2012	2013	2014	2015
June deadline applications	Men	14,940	14,900	13,315	14,030	15,725	14,235
	Women	12,480	12,895	11,810	12,350	13,745	13,230
Offers	Men	11,845	11,970	11,775	12,760	14,555	12,910
	Women	9,480	9,410	9,945	10,645	12,315	11,495
Offer rate	Men	79.3%	80.3%	88.4%	90.9%	92.6%	90.7%
	Women	76.0%	73.0%	84.2%	86.2%	89.6%	86.9%

P.19 Applicants (all ages) by POLAR3 quintile

Statistic	POLAR3 quintile	2010	2011	2012	2013	2014	2015
June deadline applicants	Quintile 1	2,600	2,870	2,725	2,880	3,300	3,115
	Quintile 2	3,865	3,980	3,590	3,785	4,295	4,195
	Quintile 3	5,115	5,170	4,925	5,255	5,975	5,605
	Quintile 4	6,405	6,520	5,720	6,150	6,915	6,335
	Quintile 5	7,510	7,465	6,610	6,870	7,480	6,805
Placed June deadline applicants	Quintile 1	525	535	595	620	660	635
	Quintile 2	770	730	730	760	795	855
	Quintile 3	965	870	920	910	1,030	1,010
	Quintile 4	1,210	1,140	1,055	1,045	1,220	1,125
	Quintile 5	1,385	1,305	1,120	1,145	1,260	1,125
All placed applicants	Quintile 1	560	565	650	670	705	680
	Quintile 2	825	780	795	810	840	925
	Quintile 3	1,045	935	1,000	975	1,100	1,095
	Quintile 4	1,300	1,205	1,150	1,095	1,290	1,210
	Quintile 5	1,520	1,390	1,215	1,210	1,340	1,215

P.20 Applications (all ages) by POLAR3 quintile

Statistic	POLAR3 quintile	2010	2011	2012	2013	2014	2015
June deadline applications	Quintile 1	2,905	3,160	2,995	3,145	3,545	3,390
	Quintile 2	4,215	4,330	3,905	4,055	4,610	4,465
	Quintile 3	5,485	5,500	5,235	5,525	6,270	5,880
	Quintile 4	6,850	6,900	6,045	6,455	7,235	6,610
	Quintile 5	7,885	7,835	6,880	7,155	7,755	7,040
Offers	Quintile 1	2,105	2,205	2,505	2,705	3,120	2,875
	Quintile 2	3,115	3,210	3,310	3,535	4,125	3,900
	Quintile 3	4,175	4,135	4,460	4,850	5,720	5,170
	Quintile 4	5,415	5,385	5,255	5,760	6,635	5,910
	Quintile 5	6,460	6,395	6,135	6,510	7,230	6,485
Offer rate	Quintile 1	72.5%	69.8%	83.5%	86.0%	88.0%	84.8%
	Quintile 2	73.9%	74.2%	84.8%	87.2%	89.5%	87.4%
	Quintile 3	76.1%	75.1%	85.2%	87.8%	91.2%	87.9%
	Quintile 4	79.1%	78.0%	86.9%	89.2%	91.7%	89.4%
	Quintile 5	82.0%	81.6%	89.1%	91.0%	93.3%	92.1%

P.21 Applicants (all ages) by ethnic group

Statistic	Ethnic group	2010	2011	2012	2013	2014	2015
June deadline applicants	Asian	1,880	2,070	2,060	2,215	2,890	2,660
	Black	1,780	2,085	2,010	2,410	2,970	2,930
	Mixed	900	990	865	1,040	1,235	1,215
	White	20,575	20,525	18,205	18,815	20,295	18,625
	Other	285	245	360	400	520	525
Placed June deadline applicants	Asian	295	345	320	335	430	425
	Black	265	290	325	405	505	490
	Mixed	160	150	165	175	215	230
	White	4,085	3,760	3,540	3,495	3,725	3,505
	Other	40	40	60	60	70	80
All placed applicants	Asian	370	380	385	380	485	480
	Black	310	325	380	450	560	555
	Mixed	180	155	190	185	240	255
	White	4,330	3,955	3,780	3,670	3,905	3,730
	Other	45	45	70	70	75	85

P.22 Applications (all ages) by ethnic group

Statistic	Ethnic group	2010	2011	2012	2013	2014	2015
June deadline applications	Asian	1,980	2,185	2,175	2,295	3,000	2,760
	Black	1,855	2,175	2,080	2,470	3,035	3,005
	Mixed	950	1,050	905	1,085	1,285	1,255
	White	22,180	21,960	19,465	20,005	21,500	19,730
	Other	305	265	370	415	535	540
Offers	Asian	1,465	1,625	1,795	2,010	2,725	2,370
	Black	1,165	1,330	1,560	1,955	2,560	2,475
	Mixed	720	805	790	960	1,170	1,110
	White	17,655	17,320	17,180	18,030	19,855	17,855
	Other	210	180	295	350	460	455
Offer rate	Asian	73.9%	74.4%	82.5%	87.6%	90.9%	85.9%
	Black	62.8%	61.3%	75.0%	79.2%	84.4%	82.4%
	Mixed	75.7%	76.6%	87.6%	88.8%	91.0%	88.4%
	White	79.6%	78.9%	88.2%	90.1%	92.4%	90.5%
	Other	69.2%	68.6%	79.0%	84.4%	85.7%	84.3%

Technical Notes and Definitions

UCAS undergraduate scheme

Adjustment

Adjustment allows applicants who have met and exceeded the terms of their conditional firm offer to seek and find a place at another provider whilst keeping their place at their original firm choice provider.

Clearing

Clearing is a route for applicants that are not placed and holding no offers to find a place on courses with vacancies.

Cycle year

The UCAS application cycle which runs from September to October the following year. For example the 2015 cycle runs from September 2014 through to October 2015.

End of cycle

The point in the cycle to which the numbers in this report refer, and the point at which the cycle is closed such that no more applications or offers can be made, and no more applicants can be placed. Numbers reported at the end of cycle exclude information on a small number of applicants who cancelled during the cycle.

Extra

Applicants who are unsuccessful in obtaining an offer or decline all offers may be eligible to apply through Extra, where they can apply to one further course at a time. Extra operates from 25 February until early July. It provides applicants who are eligible the possibility of obtaining an offer before exam results are published and Clearing starts.

June 30 deadline

The deadline for main scheme applications. Applicants who apply after this date will go directly into Clearing.

Record of Prior Acceptance (RPA)

RPA is an acceptance route used when a provider informs UCAS of applicants it has accepted outside of the normal application process (e.g. individuals who have applied directly to the provider).

Reporting groups

Ethnic group

High level grouping of ethnic origin as declared by the applicant: 'White', 'Black', 'Asian', 'Mixed', 'Other', 'Unknown'. Applicants who declare themselves as 'Unknown' ethnic origin are not reported in these tables, but are included in the associated csv data file.

POLAR3 quintile

Developed by HEFCE, POLAR3 classifies small areas across the UK into five groups according to their level of young participation in Higher Education. Each of these groups represents around 20 per cent of young people and is ranked from Quintile 1 (areas with the lowest young participation rates, considered as the most disadvantaged) to Quintile 5 (highest young participation rates, considered most advantaged). POLAR3 is based on the participation rates of young people between 2005 and 2009 who entered Higher Education between 2005-06 and 2010-11, therefore is most suitable for applicants aged 19 and under. These groups are assigned using the postcode declared by the applicant at the time of their application. If a UK postcode is invalid, considered unsafe for measurement or there is no link to Census geography possible then the applicant is not assigned to a quintile. Applicants with no POLAR3 quintile are not reported.

Sex

Sex as declared by the applicant.

SIMD quintile

Scottish index of multiple deprivation (SIMD) for 2012 identifies small area concentrations of multiple deprivation across all of Scotland, providing a relative measure of deprivation amongst 6505 small areas (data zones) based on 7 socio-economic domains. These small areas are classified into five groups ranked from Quintile 1 (considered the most deprived) to Quintile 5 (considered least deprived), with equal populations in each quintile. Quintiles are assigned using the postcode declared by the applicant, applicants declaring invalid postcodes are classified as 'Not assigned' and are not reported.

SIMD is only defined for applicants domiciled in Scotland, therefore any applicants domiciled outside of Scotland cannot be assigned to an SIMD quintile and so are not reported for this measure.

SIMD is only reported for providers in Scotland. Application and entry rates by SIMD are reported in the 2015 End of Cycle Report and the 2016 cycle January deadline application rate report.

Statistics reported in the tables

All placed applicants

The number of applicants placed for entry into higher education at the provider through one of their choices, including any choices made through Extra, or via Adjustment, Clearing or RPA.

All placed applicants per 10,000 population

The number of total UK domiciled 18 year old placed applicants for entry into higher education at the provider divided by the number of UK 18 year olds in the population, multiplied by 10,000. This gives the number of 18 year olds, for every 10,000 in the population, that were placed at the provider through one of their choices, including any choices made through Extra, or via Adjustment, Clearing or RPA. It is an alternative way of expressing the entry rate to a provider. By referencing the underlying population this statistic shows how the number of placed applicants is changing in relation to the available pool of potential applicants and so gives the chance that somebody from the group will be placed at a provider.

This statistic is only reported for 18 year olds.

Average offer rate

The offer rate that you might expect if the predicted grades and subject choice of applicants were the only factors that influenced whether an applicant was made an offer by the provider. The average offer rate is calculated by dividing applicants according to their specific combination of grades (for A levels the best three predicted grades are used, for BTECs, International Baccalaureate and Scottish Highers and Advanced Highers, predicted grades along with any grades already achieved upon applying are used) and subject choice. For each combination the number of main scheme offers is divided by the number of main scheme applications, to give an overall offer rate. This is then multiplied by the number of applications made by the group for which the average offer rate is being calculated (for example POLAR3 quintile 1), to give an average number of offers for that group. These average number of offers are then added together across all combinations of predicted grade and subject and divided by the number of main scheme applications from the group to give the average offer rate.

The average offer rate does not attempt to control for any other factors that may play a part in the decision to make an offer, such as the subject of the qualifications studied, their relevance to a course, or the grade in each subject; higher numbers of A levels being studied; the exact profile of grades predicted; personal statements; teacher references; interviews; or any other criteria (such as work experience or portfolios) that may be part of the admissions decision.

This statistic is only reported for 18 year olds.

Contribution of group to the average offer rate

The way in which the average offer rate is defined means that the pattern of application and offers of a group (for example POLAR3 quintile 1) will always contribute, in part, to the average offer rate for that group. When this contribution is large, the average offer rate will mainly reflect the patterns for the group, meaning that the value of the average offer rate will be similar to the offer rate, the percentage point difference statistic will be small, and any real difference between the offer rate and what might be expected given the predicted grades and subject choices of the applicants will be difficult to detect.

Values of the contribution of group to the average offer rate range between 0 and 1. The closer the value is to 1 the greater the contribution a group makes to its own average offer rate.

This statistic is only reported for 18 year olds.

Placed June deadline applicants

An applicant who has been placed for entry into higher education at the provider through a June deadline application.

Placed June deadline applicants per 10,000 population

The number of UK domiciled 18 year old placed June deadline applicants at the provider divided by the number of UK 18 year olds in the population, multiplied by 10,000. This gives the number of 18 year olds, for every 10,000 in the population, that were placed at the provider through one of their June deadline applications. It is an alternative way of expressing the entry rate to a provider, but for placed June deadline applicants only. By referencing the underlying population this statistic shows how the number of placed June deadline applicants is changing in relation to the available pool of potential 18 year old applicants and so gives the chance that somebody from the group will be placed at a provider through a June deadline application.

This statistic is only reported for 18 year olds.

June deadline applications

An application (or choice) to a course in higher education to the provider that is made by the June 30 deadline. Each applicant can make up to five choices this way. The number of June deadline applications does not include choices made through the following routes: Clearing, Extra, Adjustment and RPAs. Applications made to October deadline courses received after the October deadline are not included in these statistics.

June deadline applicants

The number of applicants that made at least one application to the provider by the June 30 deadline.

June deadline applicants per 10,000 population

The number of UK domiciled 18 year old June deadline applicants to the provider divided by the number of UK 18 year olds in the population, multiplied by 10,000. This gives the number of 18 year olds, for every 10,000 in the population, who applied by the June 30 deadline. It is equivalent to the application rate. By referencing the underlying population this statistic shows how the number of June deadline applicants is changing in relation to the available pool of potential 18 year old applicants and so gives the chance that somebody from the group will apply to a provider by the June 30 deadline.

This statistic is only reported for 18 year olds.

Offers

An offer is defined as a provider's decision in response to an application to offer a place to an applicant, often subject to the applicant satisfying academic and/or other criteria, via a June deadline application (i.e. does not cover choices made through the following routes: Clearing, Extra, Adjustment and RPAs).

Offer rate

The number of offers made divided by the number of June deadline applications. This gives the proportion of all June deadline applications to the provider that received an offer.

Percentage point difference between offer rate and average offer rate

The offer rate minus the average offer rate.

The percentage point difference can be compared to the expected range of statistical variation resulting from the calculation of the average offer rate using the Average Offer Rate Lookup Table. Where the value of the percentage point difference lies outside of this range, the percentage point difference may be considered to represent a real difference between the offer rate and the average offer rate.

Other definitions

Age

This analysis uses country-specific age definitions that align with the cut off points for school and college cohorts within the different administrations of the UK. For England and Wales, ages are defined on the 31 August, for Northern Ireland on the 1 July and for Scotland on the 28 February the following year. Defining ages in this way matches the assignment of children to school cohorts. For applicants outside of the UK a cohort cut off of 31 August has been used.

Provider

A higher education provider - a university or college.

UK domiciled

Declared area of permanent residence within England, Northern Ireland, Scotland and Wales. Applicants from the Channel Islands and Isle of Man are not included.