

S64 St Marys University Twickenham London

Cycle years: 2010 - 2015

Cycle Reference Point: End of Cycle

Applicant coverage: UK domiciled

Reporting groups: Sex, POLAR3, ethnic group

Applicant statistics: June deadline applicants, placed June deadline applicants, all placed applicants, June deadline applicants per 10,000 population, placed June deadline applicants per 10,000 population, all placed applicants per 10,000 population

Application statistics: June deadline applications, offers, offer rate, average offer rate, percentage point difference between offer rate and average offer rate, contribution of group to the average offer rate

Non-disclosure controls: To avoid the disclosure of information about any individual the following measures are taken

- Applicants, placed applicants, applications and offers are rounded to the nearest 5.
- Applicants/placed applicants per 10,000 population figures are reported as 0 if the applicant/placed applicant figures are rounded to 0.
- All statistics related to the offer rate are not reported when the number of applications for a group is less than 10. The percentage point difference between the offer rate and the average offer rate is not reported when the number of applications for a group is less than 50.
- Offer rates are reported as 0% if there are fewer than 5 offers, and 100% if the number of offers is within 5 of the number of applications. When the offer rate is reported as 0% or 100%, it is reported in italics.

Contents:

18 year old applicants:	P.1
18 year old applications:	P.2
18 year old applicants by sex:	P.3
18 year old applications by sex:	P.4
18 year old applicants by POLAR3 quintile:	P.7
18 year old applications by POLAR3 quintile:	P.8
18 year old applicants by ethnic group:	P.11
18 year old applications by ethnic group:	P.12
Applicants (all ages):	P.15
Applications (all ages):	P.16
Applicants (all ages) by sex:	P.17
Applications (all ages) by sex:	P.18
Applicants (all ages) by POLAR3 quintile:	P.19
Applications (all ages) by POLAR3 quintile:	P.20
Applicants (all ages) by ethnic group:	P.21
Applications (all ages) by ethnic group:	P.22

P.1 18 year old applicants

Statistic	2010	2011	2012	2013	2014	2015
June deadline applicants	2,960	3,345	3,180	2,645	2,870	3,300
Placed June deadline applicants	570	625	655	570	650	715
All placed applicants	580	650	680	640	705	785
June deadline applicants per 10,000 population	37.5	43.4	41.1	34.7	38.1	43.1
Placed June deadline applicants per 10,000	7.2	8.1	8.5	7.5	8.6	9.3
All placed applicants per 10,000 population	7.3	8.4	8.8	8.4	9.4	10.3

P.2 18 year old applications

Statistic	2010	2011	2012	2013	2014	2015
June deadline applications	3,135	3,565	3,315	2,750	3,010	3,420
Offers	2,560	2,725	2,820	2,475	2,730	3,080
Offer rate	81.6%	76.4%	85.0%	90.0%	90.7%	90.1%

P.3 18 year old applicants by sex

Statistic	Sex	2010	2011	2012	2013	2014	2015
June deadline applicants	Men	1,090	1,215	1,120	955	1,100	1,295
	Women	1,870	2,130	2,060	1,690	1,775	2,005
Placed June deadline applicants	Men	190	235	260	240	260	280
	Women	380	385	395	335	390	435
All placed applicants	Men	200	245	265	270	280	310
	Women	380	405	410	370	425	475
June deadline applicants per 10,000 population	Men	27.2	30.9	28.2	24.5	28.4	33.0
	Women	48.2	56.5	54.7	45.6	48.5	53.7
Placed June deadline applicants per 10,000 population	Men	4.7	6.0	6.5	6.1	6.7	7.1
	Women	9.7	10.3	10.5	9.0	10.7	11.6
All placed applicants per 10,000 population	Men	5.0	6.3	6.7	7.0	7.3	7.9
	Women	9.8	10.7	10.9	10.0	11.6	12.8

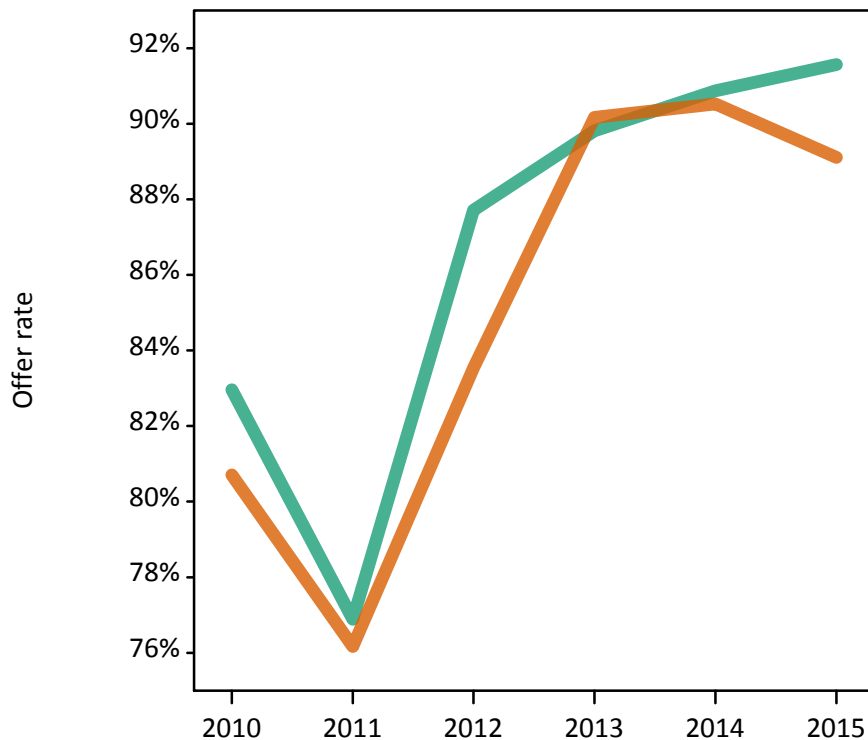
P.4 18 year old applications by sex

Statistic	Sex	2010	2011	2012	2013	2014	2015
June deadline applications	Men	1,205	1,340	1,195	1,010	1,185	1,365
	Women	1,935	2,225	2,120	1,740	1,825	2,055
Offers	Men	1,000	1,030	1,050	910	1,075	1,250
	Women	1,560	1,695	1,770	1,570	1,655	1,835
Offer rate	Men	83.0%	76.9%	87.7%	89.8%	90.9%	91.6%
	Women	80.7%	76.2%	83.5%	90.2%	90.5%	89.1%
Average offer rate	Men	84.0%	77.9%	88.0%	91.7%	91.6%	92.7%
	Women	80.1%	75.6%	83.3%	89.1%	90.1%	88.4%
Percentage point difference between offer rate and average offer rate	Men	-1.0	-1.0	-0.3	-1.9	-0.7	-1.1
	Women	0.6	0.6	0.2	1.1	0.5	0.7
Contribution of group to the average offer rate	Men	0.592	0.567	0.579	0.580	0.605	0.598
	Women	0.746	0.739	0.762	0.756	0.744	0.734

P.5 18 year old offer rate by sex

Note: The line for a group is not plotted when that group made fewer than 10 applications in any of the years from 2010-2015.

Men
Women



P.6 Percentage point difference between 18 year old offer rate and average offer rate by sex

Note: The line for a group is not plotted when that group made fewer than 50 applications in any of the years from 2010-2015.

Men
Women



P.7 18 year old applicants by POLAR3 quintile

Statistic	POLAR3 quintile	2010	2011	2012	2013	2014	2015
June deadline applicants	Quintile 1	190	230	200	170	245	260
	Quintile 2	380	430	415	345	375	455
	Quintile 3	655	710	685	560	645	765
	Quintile 4	780	945	880	745	780	865
	Quintile 5	955	1,020	995	820	820	950
Placed June deadline applicants	Quintile 1	35	45	50	30	45	50
	Quintile 2	60	80	75	75	85	95
	Quintile 3	130	125	135	115	145	150
	Quintile 4	155	160	165	175	190	200
	Quintile 5	185	220	230	170	185	220
All placed applicants	Quintile 1	35	45	50	30	50	55
	Quintile 2	60	80	75	85	95	100
	Quintile 3	135	130	145	125	160	170
	Quintile 4	160	165	170	200	205	215
	Quintile 5	190	225	240	200	200	245
June deadline applicants per 10,000 population	Quintile 1	12.8	16.1	14.1	12.1	17.6	18.6
	Quintile 2	24.6	28.5	27.6	23.5	25.7	30.5
	Quintile 3	41.1	46.1	44.5	36.7	42.9	49.8
	Quintile 4	48.9	60.5	55.4	47.6	50.7	55.3
	Quintile 5	56.2	61.7	59.3	49.7	50.3	56.7
Placed June deadline applicants per 10,000 population	Quintile 1	2.4	3.0	3.6	2.1	3.4	3.6
	Quintile 2	3.8	5.3	4.9	5.2	5.7	6.3
	Quintile 3	8.2	8.1	8.7	7.7	9.8	9.8
	Quintile 4	9.8	10.2	10.3	11.3	12.3	12.6
	Quintile 5	10.9	13.2	13.8	10.3	11.2	13.1
All placed applicants per 10,000 population	Quintile 1	2.4	3.1	3.7	2.2	3.4	3.9
	Quintile 2	4.0	5.4	5.0	5.8	6.4	6.7
	Quintile 3	8.4	8.4	9.3	8.3	10.5	11.0
	Quintile 4	9.9	10.7	10.6	12.8	13.2	13.7
	Quintile 5	11.1	13.7	14.3	12.0	12.3	14.7

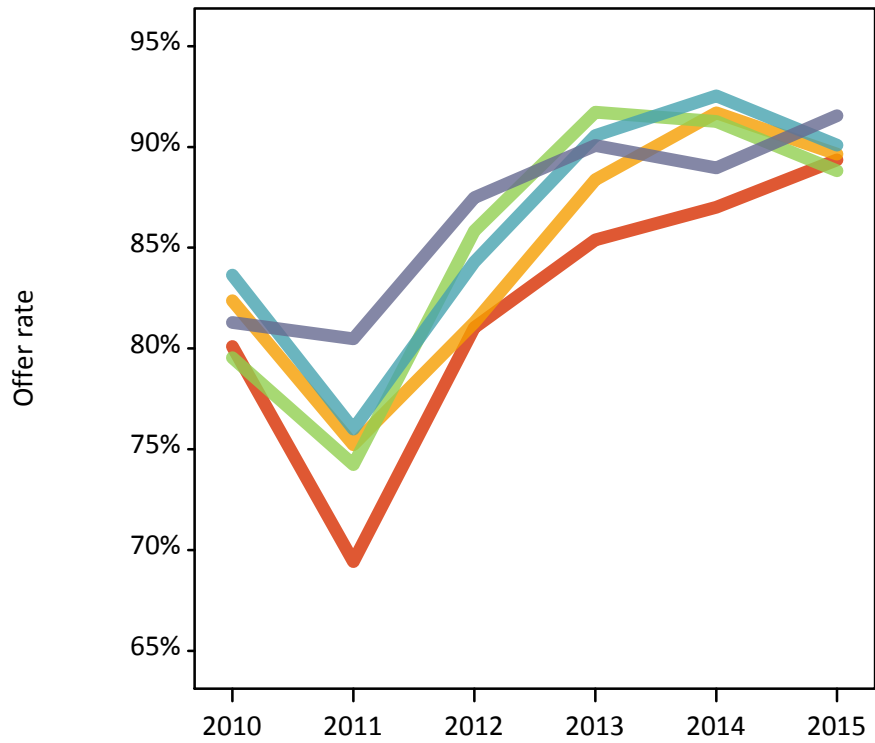
P.8 18 year old applications by POLAR3 quintile

Statistic	POLAR3 quintile	2010	2011	2012	2013	2014	2015
June deadline applications	Quintile 1	200	240	210	180	255	265
	Quintile 2	395	455	435	370	395	475
	Quintile 3	700	755	705	570	675	785
	Quintile 4	820	1,000	910	775	815	910
	Quintile 5	1,010	1,105	1,055	855	860	985
Offers	Quintile 1	160	170	170	150	220	235
	Quintile 2	325	345	350	325	365	425
	Quintile 3	555	560	605	520	615	700
	Quintile 4	685	760	765	700	755	820
	Quintile 5	820	890	925	770	765	900
Offer rate	Quintile 1	80.1%	69.4%	81.0%	85.4%	87.0%	89.4%
	Quintile 2	82.4%	75.2%	81.3%	88.4%	91.7%	89.6%
	Quintile 3	79.5%	74.2%	85.8%	91.7%	91.3%	88.8%
	Quintile 4	83.6%	76.0%	84.3%	90.6%	92.5%	90.1%
	Quintile 5	81.3%	80.5%	87.5%	90.1%	89.0%	91.6%
Average offer rate	Quintile 1	79.4%	71.8%	82.1%	88.9%	89.0%	90.0%
	Quintile 2	81.9%	73.5%	82.0%	89.7%	90.4%	89.5%
	Quintile 3	81.3%	75.5%	86.4%	90.3%	91.3%	89.9%
	Quintile 4	81.9%	76.7%	85.0%	90.7%	91.0%	90.3%
	Quintile 5	81.7%	79.2%	86.0%	89.6%	90.4%	90.4%
Percentage point difference between offer rate and average offer rate	Quintile 1	0.7	-2.3	-1.1	-3.5	-2.0	-0.7
	Quintile 2	0.4	1.7	-0.7	-1.3	1.3	0.2
	Quintile 3	-1.8	-1.3	-0.5	1.4	-0.0	-1.1
	Quintile 4	1.7	-0.7	-0.7	-0.2	1.6	-0.2
	Quintile 5	-0.5	1.3	1.5	0.5	-1.5	1.2
Contribution of group to the average offer rate	Quintile 1	0.172	0.173	0.164	0.208	0.209	0.166
	Quintile 2	0.231	0.236	0.230	0.269	0.231	0.224
	Quintile 3	0.306	0.293	0.314	0.316	0.332	0.316
	Quintile 4	0.359	0.367	0.360	0.391	0.368	0.353
	Quintile 5	0.403	0.402	0.406	0.417	0.386	0.382

P.9 18 year old offer rate by POLAR3 quintile

Note: The line for a group is not plotted when that group made fewer than 10 applications in any of the years from 2010-2015.

- Quintile 1
- Quintile 2
- Quintile 3
- Quintile 4
- Quintile 5



P.10 Percentage point difference between 18 year old offer rate and average offer rate by POLAR3 quintile

Note: The line for a group is not plotted when that group made fewer than 50 applications in any of the years from 2010-2015.

- Quintile 1
- Quintile 2
- Quintile 3
- Quintile 4
- Quintile 5



P.11 18 year old applicants by ethnic group

Statistic	Ethnic group	2010	2011	2012	2013	2014	2015
June deadline applicants	Asian	200	245	295	230	290	355
	Black	200	215	265	245	290	300
	Mixed	170	180	140	150	170	185
	White	2,330	2,635	2,385	1,945	2,030	2,355
	Other	50	55	75	65	80	85
Placed June deadline applicants	Asian	25	25	40	25	55	65
	Black	30	30	45	50	55	55
	Mixed	25	35	25	35	35	45
	White	480	525	525	445	480	535
	Other	5	5	10	15	20	15
All placed applicants	Asian	25	25	40	40	60	75
	Black	30	30	50	60	65	65
	Mixed	25	40	30	40	40	50
	White	490	545	540	485	515	580
	Other	5	10	10	15	20	15
June deadline applicants per 10,000 population	Asian	32.5	38.9	45.2	34.9	42.8	49.9
	Black	76.0	79.4	93.8	82.5	96.0	94.9
	Mixed	74.2	73.9	54.5	55.8	59.1	60.0
	White	34.7	40.7	36.9	30.9	32.9	37.8
	Other	67.5	69.1	85.9	72.8	86.0	88.3
Placed June deadline applicants per 10,000 population	Asian	3.9	3.8	6.0	3.9	8.0	9.5
	Black	10.7	11.3	16.7	16.5	18.5	16.7
	Mixed	11.7	15.3	10.4	13.3	12.5	13.9
	White	7.2	8.1	8.1	7.1	7.8	8.6
	Other	7.8	8.6	12.4	15.4	21.5	13.5
All placed applicants per 10,000 population	Asian	3.9	3.8	6.3	5.8	9.0	10.9
	Black	11.5	11.3	17.8	19.9	21.1	20.7
	Mixed	11.7	16.5	11.1	14.8	13.9	15.9
	White	7.3	8.4	8.4	7.7	8.3	9.3
	Other	7.8	9.9	13.6	18.7	22.6	13.5

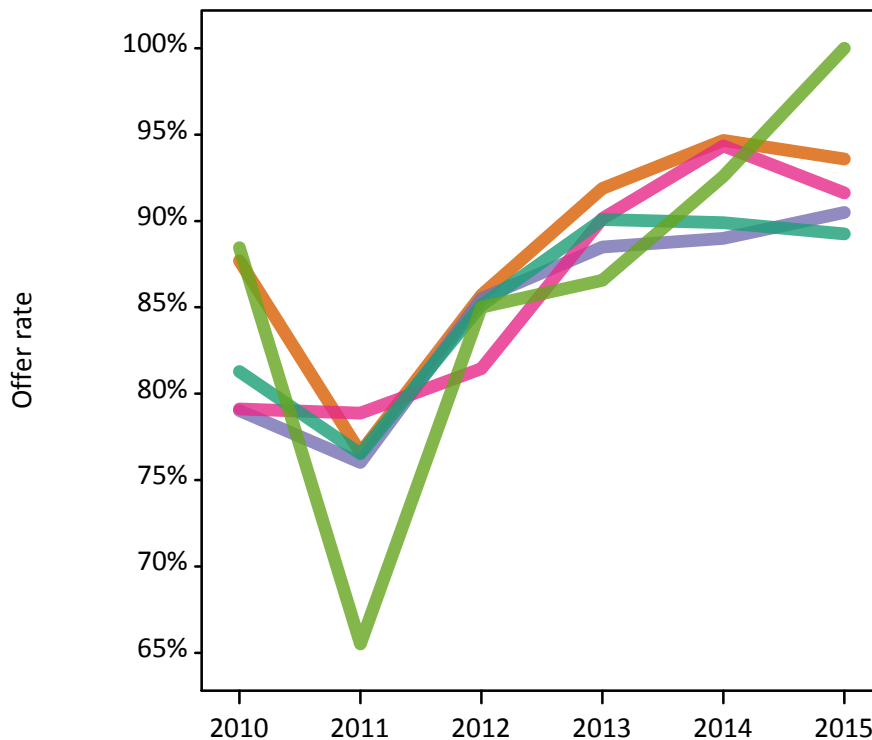
P.12 18 year old applications by ethnic group

Statistic	Ethnic group	2010	2011	2012	2013	2014	2015
June deadline applications	Asian	205	250	300	235	300	360
	Black	205	220	270	250	300	305
	Mixed	180	195	150	150	175	190
	White	2,485	2,825	2,495	2,040	2,140	2,465
	Other	50	60	80	65	80	85
Offers	Asian	180	195	260	215	285	335
	Black	160	170	230	225	265	275
	Mixed	145	155	125	135	165	175
	White	2,020	2,165	2,125	1,835	1,925	2,200
	Other	45	40	70	60	75	80
Offer rate	Asian	87.7%	76.6%	85.7%	91.9%	94.7%	93.6%
	Black	79.0%	76.0%	85.5%	88.5%	89.0%	90.5%
	Mixed	79.1%	78.9%	81.5%	90.1%	94.4%	91.6%
	White	81.3%	76.5%	85.1%	90.1%	89.9%	89.2%
	Other	88.5%	65.5%	85.0%	86.6%	92.6%	100.0%
Average offer rate	Asian	87.8%	79.8%	87.2%	91.5%	94.8%	93.2%
	Black	83.5%	75.9%	86.0%	89.2%	90.0%	92.2%
	Mixed	83.9%	77.1%	85.2%	90.5%	93.4%	91.3%
	White	80.6%	76.2%	84.5%	89.9%	89.9%	89.2%
	Other	87.0%	73.0%	87.3%	91.2%	90.9%	91.7%
Percentage point difference between offer rate and average offer rate	Asian	-0.1	-3.2	-1.5	0.4	-0.2	0.4
	Black	-4.5	0.2	-0.5	-0.7	-1.0	-1.7
	Mixed	-4.8	1.8	-3.7	-0.4	0.9	0.4
	White	0.7	0.3	0.6	0.2	0.0	0.1
	Other	1.4	-7.5	-2.3	-4.7	1.7	8.3
Contribution of group to the average offer rate	Asian	0.278	0.249	0.253	0.259	0.277	0.249
	Black	0.192	0.196	0.211	0.231	0.267	0.215
	Mixed	0.191	0.191	0.153	0.186	0.172	0.131
	White	0.832	0.836	0.801	0.796	0.768	0.765
	Other	0.131	0.140	0.176	0.155	0.191	0.160

P.13 18 year old offer rate by ethnic group

Note: The line for a group is not plotted when that group made fewer than 10 applications in any of the years from 2010-2015.

- Asian
- Black
- Mixed
- White
- Other



P.14 Percentage point difference between 18 year old offer rate and average offer rate by ethnic group

Note: The line for a group is not plotted when that group made fewer than 50 applications in any of the years from 2010-2015.

- Asian
- Black
- Mixed
- White
- Other



P.15 Applicants (all ages)

Statistic	2010	2011	2012	2013	2014	2015
June deadline applicants	5,500	5,985	5,405	4,920	5,110	5,675
Placed June deadline applicants	1,155	1,105	1,140	1,090	1,200	1,265
All placed applicants	1,190	1,155	1,185	1,265	1,380	1,495

P.16 Applications (all ages)

Statistic	2010	2011	2012	2013	2014	2015
June deadline applications	5,940	6,455	5,740	5,195	5,410	5,955
Offers	4,405	4,380	4,520	4,310	4,675	5,180
Offer rate	74.2%	67.8%	78.8%	82.9%	86.4%	87.0%

P.17 Applicants (all ages) by sex

Statistic	Sex	2010	2011	2012	2013	2014	2015
June deadline applicants	Men	2,175	2,340	2,035	1,935	2,105	2,450
	Women	3,325	3,650	3,375	2,985	3,010	3,220
Placed June deadline applicants	Men	460	435	490	490	520	565
	Women	695	670	650	600	675	700
All placed applicants	Men	480	455	505	570	610	680
	Women	710	700	680	695	770	815

P.18 Applications (all ages) by sex

Statistic	Sex	2010	2011	2012	2013	2014	2015
June deadline applications	Men	2,435	2,600	2,210	2,100	2,290	2,630
	Women	3,510	3,860	3,530	3,100	3,120	3,325
Offers	Men	1,805	1,750	1,800	1,735	1,950	2,285
	Women	2,605	2,625	2,720	2,575	2,725	2,895
Offer rate	Men	74.1%	67.4%	81.5%	82.7%	85.2%	86.9%
	Women	74.2%	68.0%	77.1%	83.1%	87.3%	87.0%

P.19 Applicants (all ages) by POLAR3 quintile

Statistic	POLAR3 quintile	2010	2011	2012	2013	2014	2015
June deadline applicants	Quintile 1	340	415	365	325	420	420
	Quintile 2	640	700	660	605	635	750
	Quintile 3	1,235	1,285	1,230	1,085	1,145	1,290
	Quintile 4	1,430	1,660	1,445	1,360	1,395	1,490
	Quintile 5	1,840	1,910	1,700	1,540	1,505	1,710
Placed June deadline applicants	Quintile 1	60	85	85	65	90	90
	Quintile 2	120	120	125	135	145	165
	Quintile 3	255	210	245	230	265	260
	Quintile 4	295	290	295	315	330	345
	Quintile 5	420	405	385	345	365	400
All placed applicants	Quintile 1	65	85	90	70	95	100
	Quintile 2	125	125	130	155	165	190
	Quintile 3	265	220	255	260	305	310
	Quintile 4	300	305	305	370	370	405
	Quintile 5	430	420	400	410	435	485

P.20 Applications (all ages) by POLAR3 quintile

Statistic	POLAR3 quintile	2010	2011	2012	2013	2014	2015
June deadline applications	Quintile 1	365	440	390	340	445	430
	Quintile 2	690	745	700	645	670	785
	Quintile 3	1,335	1,385	1,300	1,125	1,215	1,355
	Quintile 4	1,535	1,775	1,520	1,435	1,480	1,580
	Quintile 5	2,000	2,095	1,825	1,635	1,590	1,790
Offers	Quintile 1	270	280	300	280	370	375
	Quintile 2	515	505	545	545	590	680
	Quintile 3	945	905	1,025	920	1,055	1,150
	Quintile 4	1,155	1,185	1,185	1,190	1,280	1,380
	Quintile 5	1,500	1,490	1,465	1,365	1,365	1,580
Offer rate	Quintile 1	74.7%	63.3%	76.6%	82.1%	84.0%	87.7%
	Quintile 2	74.9%	67.9%	77.7%	84.1%	87.6%	86.8%
	Quintile 3	70.9%	65.5%	78.8%	81.5%	87.1%	84.7%
	Quintile 4	75.4%	66.8%	78.0%	83.0%	86.7%	87.4%
	Quintile 5	75.0%	71.3%	80.4%	83.5%	85.7%	88.2%

P.21 Applicants (all ages) by ethnic group

Statistic	Ethnic group	2010	2011	2012	2013	2014	2015
June deadline applicants	Asian	430	480	535	460	515	640
	Black	575	595	615	625	640	675
	Mixed	340	360	305	305	360	375
	White	3,990	4,385	3,745	3,355	3,410	3,775
	Other	125	120	165	145	150	165
Placed June deadline applicants	Asian	55	50	75	65	85	115
	Black	95	85	105	120	125	120
	Mixed	60	75	60	75	85	80
	White	920	880	860	800	865	905
	Other	20	20	25	25	30	25
All placed applicants	Asian	60	50	80	90	110	150
	Black	95	85	110	150	160	185
	Mixed	65	80	65	90	100	95
	White	940	915	895	895	955	1,010
	Other	20	20	25	35	35	35

P.22 Applications (all ages) by ethnic group

Statistic	Ethnic group	2010	2011	2012	2013	2014	2015
June deadline applications	Asian	445	505	555	475	535	645
	Black	600	625	635	650	665	705
	Mixed	365	395	335	320	385	395
	White	4,365	4,760	4,000	3,565	3,635	3,990
	Other	125	125	175	150	160	170
Offers	Asian	335	330	440	400	475	585
	Black	365	365	465	505	545	575
	Mixed	255	260	240	255	325	340
	White	3,320	3,310	3,215	3,005	3,160	3,485
	Other	105	85	135	120	140	150
Offer rate	Asian	76.1%	65.4%	79.2%	84.2%	89.3%	90.3%
	Black	60.3%	58.4%	72.8%	77.4%	82.0%	81.7%
	Mixed	69.7%	65.8%	71.4%	79.8%	84.3%	87.0%
	White	76.1%	69.5%	80.4%	84.3%	86.9%	87.2%
	Other	82.4%	68.3%	76.7%	78.7%	88.7%	89.9%

Technical Notes and Definitions

UCAS undergraduate scheme

Adjustment

Adjustment allows applicants who have met and exceeded the terms of their conditional firm offer to seek and find a place at another provider whilst keeping their place at their original firm choice provider.

Clearing

Clearing is a route for applicants that are not placed and holding no offers to find a place on courses with vacancies.

Cycle year

The UCAS application cycle which runs from September to October the following year. For example the 2015 cycle runs from September 2014 through to October 2015.

End of cycle

The point in the cycle to which the numbers in this report refer, and the point at which the cycle is closed such that no more applications or offers can be made, and no more applicants can be placed. Numbers reported at the end of cycle exclude information on a small number of applicants who cancelled during the cycle.

Extra

Applicants who are unsuccessful in obtaining an offer or decline all offers may be eligible to apply through Extra, where they can apply to one further course at a time. Extra operates from 25 February until early July. It provides applicants who are eligible the possibility of obtaining an offer before exam results are published and Clearing starts.

June 30 deadline

The deadline for main scheme applications. Applicants who apply after this date will go directly into Clearing.

Record of Prior Acceptance (RPA)

RPA is an acceptance route used when a provider informs UCAS of applicants it has accepted outside of the normal application process (e.g. individuals who have applied directly to the provider).

Reporting groups

Ethnic group

High level grouping of ethnic origin as declared by the applicant: 'White', 'Black', 'Asian', 'Mixed', 'Other', 'Unknown'. Applicants who declare themselves as 'Unknown' ethnic origin are not reported in these tables, but are included in the associated csv data file.

POLAR3 quintile

Developed by HEFCE, POLAR3 classifies small areas across the UK into five groups according to their level of young participation in Higher Education. Each of these groups represents around 20 per cent of young people and is ranked from Quintile 1 (areas with the lowest young participation rates, considered as the most disadvantaged) to Quintile 5 (highest young participation rates, considered most advantaged). POLAR3 is based on the participation rates of young people between 2005 and 2009 who entered Higher Education between 2005-06 and 2010-11, therefore is most suitable for applicants aged 19 and under. These groups are assigned using the postcode declared by the applicant at the time of their application. If a UK postcode is invalid, considered unsafe for measurement or there is no link to Census geography possible then the applicant is not assigned to a quintile. Applicants with no POLAR3 quintile are not reported.

Sex

Sex as declared by the applicant.

SIMD quintile

Scottish index of multiple deprivation (SIMD) for 2012 identifies small area concentrations of multiple deprivation across all of Scotland, providing a relative measure of deprivation amongst 6505 small areas (data zones) based on 7 socio-economic domains. These small areas are classified into five groups ranked from Quintile 1 (considered the most deprived) to Quintile 5 (considered least deprived), with equal populations in each quintile. Quintiles are assigned using the postcode declared by the applicant, applicants declaring invalid postcodes are classified as 'Not assigned' and are not reported.

SIMD is only defined for applicants domiciled in Scotland, therefore any applicants domiciled outside of Scotland cannot be assigned to an SIMD quintile and so are not reported for this measure.

SIMD is only reported for providers in Scotland. Application and entry rates by SIMD are reported in the 2015 End of Cycle Report and the 2016 cycle January deadline application rate report.

Statistics reported in the tables

All placed applicants

The number of applicants placed for entry into higher education at the provider through one of their choices, including any choices made through Extra, or via Adjustment, Clearing or RPA.

All placed applicants per 10,000 population

The number of total UK domiciled 18 year old placed applicants for entry into higher education at the provider divided by the number of UK 18 year olds in the population, multiplied by 10,000. This gives the number of 18 year olds, for every 10,000 in the population, that were placed at the provider through one of their choices, including any choices made through Extra, or via Adjustment, Clearing or RPA. It is an alternative way of expressing the entry rate to a provider. By referencing the underlying population this statistic shows how the number of placed applicants is changing in relation to the available pool of potential applicants and so gives the chance that somebody from the group will be placed at a provider.

This statistic is only reported for 18 year olds.

Average offer rate

The offer rate that you might expect if the predicted grades and subject choice of applicants were the only factors that influenced whether an applicant was made an offer by the provider. The average offer rate is calculated by dividing applicants according to their specific combination of grades (for A levels the best three predicted grades are used, for BTECs, International Baccalaureate and Scottish Highers and Advanced Highers, predicted grades along with any grades already achieved upon applying are used) and subject choice. For each combination the number of main scheme offers is divided by the number of main scheme applications, to give an overall offer rate. This is then multiplied by the number of applications made by the group for which the average offer rate is being calculated (for example POLAR3 quintile 1), to give an average number of offers for that group. These average number of offers are then added together across all combinations of predicted grade and subject and divided by the number of main scheme applications from the group to give the average offer rate.

The average offer rate does not attempt to control for any other factors that may play a part in the decision to make an offer, such as the subject of the qualifications studied, their relevance to a course, or the grade in each subject; higher numbers of A levels being studied; the exact profile of grades predicted; personal statements; teacher references; interviews; or any other criteria (such as work experience or portfolios) that may be part of the admissions decision.

This statistic is only reported for 18 year olds.

Contribution of group to the average offer rate

The way in which the average offer rate is defined means that the pattern of application and offers of a group (for example POLAR3 quintile 1) will always contribute, in part, to the average offer rate for that group. When this contribution is large, the average offer rate will mainly reflect the patterns for the group, meaning that the value of the average offer rate will be similar to the offer rate, the percentage point difference statistic will be small, and any real difference between the offer rate and what might be expected given the predicted grades and subject choices of the applicants will be difficult to detect.

Values of the contribution of group to the average offer rate range between 0 and 1. The closer the value is to 1 the greater the contribution a group makes to its own average offer rate.

This statistic is only reported for 18 year olds.

Placed June deadline applicants

An applicant who has been placed for entry into higher education at the provider through a June deadline application.

Placed June deadline applicants per 10,000 population

The number of UK domiciled 18 year old placed June deadline applicants at the provider divided by the number of UK 18 year olds in the population, multiplied by 10,000. This gives the number of 18 year olds, for every 10,000 in the population, that were placed at the provider through one of their June deadline applications. It is an alternative way of expressing the entry rate to a provider, but for placed June deadline applicants only. By referencing the underlying population this statistic shows how the number of placed June deadline applicants is changing in relation to the available pool of potential 18 year old applicants and so gives the chance that somebody from the group will be placed at a provider through a June deadline application.

This statistic is only reported for 18 year olds.

June deadline applications

An application (or choice) to a course in higher education to the provider that is made by the June 30 deadline. Each applicant can make up to five choices this way. The number of June deadline applications does not include choices made through the following routes: Clearing, Extra, Adjustment and RPAs. Applications made to October deadline courses received after the October deadline are not included in these statistics.

June deadline applicants

The number of applicants that made at least one application to the provider by the June 30 deadline.

June deadline applicants per 10,000 population

The number of UK domiciled 18 year old June deadline applicants to the provider divided by the number of UK 18 year olds in the population, multiplied by 10,000. This gives the number of 18 year olds, for every 10,000 in the population, who applied by the June 30 deadline. It is equivalent to the application rate. By referencing the underlying population this statistic shows how the number of June deadline applicants is changing in relation to the available pool of potential 18 year old applicants and so gives the chance that somebody from the group will apply to a provider by the June 30 deadline.

This statistic is only reported for 18 year olds.

Offers

An offer is defined as a provider's decision in response to an application to offer a place to an applicant, often subject to the applicant satisfying academic and/or other criteria, via a June deadline application (i.e. does not cover choices made through the following routes: Clearing, Extra, Adjustment and RPAs).

Offer rate

The number of offers made divided by the number of June deadline applications. This gives the proportion of all June deadline applications to the provider that received an offer.

Percentage point difference between offer rate and average offer rate

The offer rate minus the average offer rate.

The percentage point difference can be compared to the expected range of statistical variation resulting from the calculation of the average offer rate using the Average Offer Rate Lookup Table. Where the value of the percentage point difference lies outside of this range, the percentage point difference may be considered to represent a real difference between the offer rate and the average offer rate.

Other definitions

Age

This analysis uses country-specific age definitions that align with the cut off points for school and college cohorts within the different administrations of the UK. For England and Wales, ages are defined on the 31 August, for Northern Ireland on the 1 July and for Scotland on the 28 February the following year. Defining ages in this way matches the assignment of children to school cohorts. For applicants outside of the UK a cohort cut off of 31 August has been used.

Provider

A higher education provider - a university or college.

UK domiciled

Declared area of permanent residence within England, Northern Ireland, Scotland and Wales. Applicants from the Channel Islands and Isle of Man are not included.