

## S84 University of Sunderland

**Cycle years:** 2010 - 2015

**Cycle Reference Point:** End of Cycle

**Applicant coverage:** UK domiciled

**Reporting groups:** Sex, POLAR3, ethnic group

**Applicant statistics:** June deadline applicants, placed June deadline applicants, all placed applicants, June deadline applicants per 10,000 population, placed June deadline applicants per 10,000 population, all placed applicants per 10,000 population

**Application statistics:** June deadline applications, offers, offer rate, average offer rate, percentage point difference between offer rate and average offer rate, contribution of group to the average offer rate

**Non-disclosure controls:** To avoid the disclosure of information about any individual the following measures are taken

- Applicants, placed applicants, applications and offers are rounded to the nearest 5.
- Applicants/placed applicants per 10,000 population figures are reported as 0 if the applicant/placed applicant figures are rounded to 0.
- All statistics related to the offer rate are not reported when the number of applications for a group is less than 10. The percentage point difference between the offer rate and the average offer rate is not reported when the number of applications for a group is less than 50.
- Offer rates are reported as 0% if there are fewer than 5 offers, and 100% if the number of offers is within 5 of the number of applications. When the offer rate is reported as 0% or 100%, it is reported in italics.

### Contents:

18 year old applicants:	P.1
18 year old applications:	P.2
18 year old applicants by sex:	P.3
18 year old applications by sex:	P.4
18 year old applicants by POLAR3 quintile:	P.7
18 year old applications by POLAR3 quintile:	P.8
18 year old applicants by ethnic group:	P.11
18 year old applications by ethnic group:	P.12
Applicants (all ages):	P.15
Applications (all ages):	P.16
Applicants (all ages) by sex:	P.17
Applications (all ages) by sex:	P.18
Applicants (all ages) by POLAR3 quintile:	P.19
Applications (all ages) by POLAR3 quintile:	P.20
Applicants (all ages) by ethnic group:	P.21
Applications (all ages) by ethnic group:	P.22

## P.1 18 year old applicants

Statistic	2010	2011	2012	2013	2014	2015
June deadline applicants	5,490	6,355	5,525	5,420	4,505	4,160
Placed June deadline applicants	1,165	1,220	995	1,070	975	880
All placed applicants	1,210	1,305	1,165	1,310	1,190	1,080
June deadline applicants per 10,000 population	69.5	82.5	71.5	71.2	59.8	54.3
Placed June deadline applicants per 10,000	14.8	15.9	12.9	14.1	13.0	11.5
All placed applicants per 10,000 population	15.4	16.9	15.0	17.2	15.8	14.1

## P.2 18 year old applications

Statistic	2010	2011	2012	2013	2014	2015
June deadline applications	6,705	7,725	6,680	6,415	5,275	4,900
Offers	5,740	6,090	4,820	5,435	4,620	4,305
Offer rate	85.6%	78.8%	72.1%	84.8%	87.6%	87.9%

### P.3 18 year old applicants by sex

Statistic	Sex	2010	2011	2012	2013	2014	2015
June deadline applicants	Men	2,325	2,800	2,395	2,370	1,860	1,740
	Women	3,165	3,550	3,130	3,045	2,640	2,420
Placed June deadline applicants	Men	515	550	380	425	365	350
	Women	650	670	615	645	615	525
All placed applicants	Men	525	585	450	525	440	420
	Women	685	720	715	785	750	660
June deadline applicants per 10,000 population	Men	57.9	71.2	60.4	60.8	48.1	44.3
	Women	81.6	94.3	83.1	82.2	72.1	64.8
Placed June deadline applicants per 10,000 population	Men	12.8	14.0	9.6	10.9	9.4	8.9
	Women	16.8	17.8	16.3	17.4	16.7	14.1
All placed applicants per 10,000 population	Men	13.1	14.8	11.3	13.4	11.3	10.7
	Women	17.7	19.1	19.0	21.2	20.5	17.7

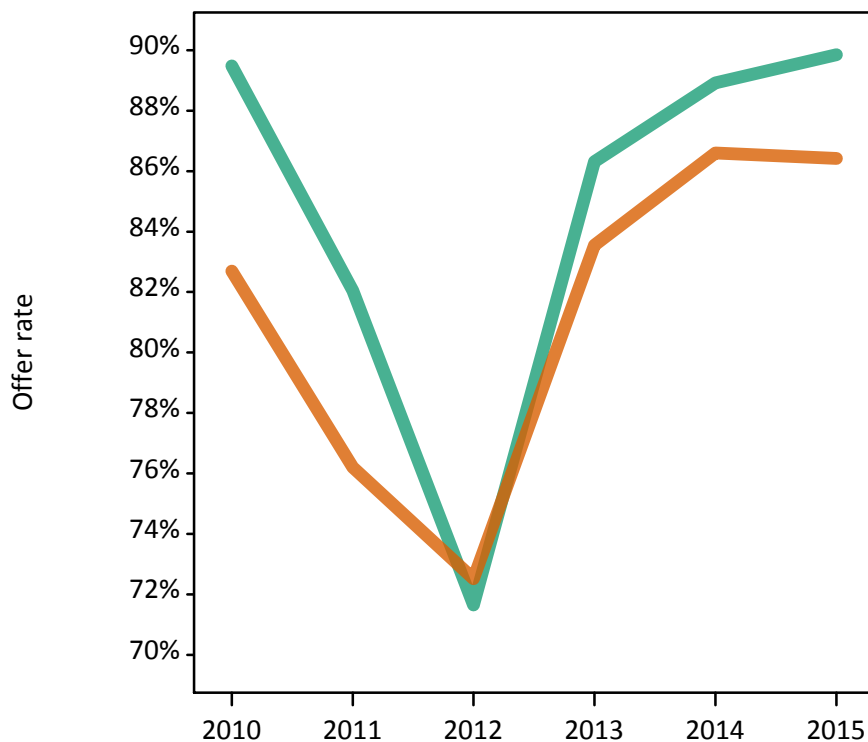
### P.4 18 year old applications by sex

Statistic	Sex	2010	2011	2012	2013	2014	2015
June deadline applications	Men	2,910	3,470	2,920	2,815	2,220	2,060
	Women	3,795	4,255	3,760	3,600	3,055	2,840
Offers	Men	2,605	2,850	2,095	2,430	1,975	1,850
	Women	3,140	3,240	2,725	3,005	2,645	2,455
Offer rate	Men	89.5%	82.1%	71.7%	86.3%	88.9%	89.9%
	Women	82.7%	76.2%	72.5%	83.6%	86.6%	86.4%
Average offer rate	Men	89.5%	81.6%	72.1%	86.5%	89.3%	89.8%
	Women	82.7%	76.6%	72.1%	83.4%	86.3%	86.5%
Percentage point difference between offer rate and average offer rate	Men	-0.0	0.5	-0.5	-0.1	-0.4	0.1
	Women	0.0	-0.4	0.4	0.1	0.3	-0.1
Contribution of group to the average offer rate	Men	0.603	0.600	0.611	0.600	0.625	0.634
	Women	0.696	0.673	0.698	0.687	0.727	0.735

### P.5 18 year old offer rate by sex

Note: The line for a group is not plotted when that group made fewer than 10 applications in any of the years from 2010-2015.

Men  
Women



### P.6 Percentage point difference between 18 year old offer rate and average offer rate by sex

Note: The line for a group is not plotted when that group made fewer than 50 applications in any of the years from 2010-2015.

Men  
Women



## P.7 18 year old applicants by POLAR3 quintile

Statistic	POLAR3 quintile	2010	2011	2012	2013	2014	2015
June deadline applicants	Quintile 1	1,230	1,305	1,225	1,225	1,110	1,085
	Quintile 2	1,210	1,385	1,220	1,200	1,070	1,025
	Quintile 3	1,115	1,300	1,135	1,130	925	835
	Quintile 4	1,015	1,185	975	970	700	610
	Quintile 5	920	1,170	965	885	685	595
Placed June deadline applicants	Quintile 1	305	290	275	295	305	270
	Quintile 2	300	335	255	295	260	250
	Quintile 3	225	255	200	230	185	185
	Quintile 4	175	175	135	140	125	85
	Quintile 5	160	160	125	115	100	85
All placed applicants	Quintile 1	315	310	305	350	370	330
	Quintile 2	310	350	315	350	320	310
	Quintile 3	235	275	240	280	220	225
	Quintile 4	185	190	165	170	155	105
	Quintile 5	165	175	140	155	120	110
June deadline applicants per 10,000 population	Quintile 1	83.0	90.8	86.1	88.0	79.8	77.3
	Quintile 2	78.8	92.2	81.2	81.4	73.2	69.0
	Quintile 3	70.0	84.4	73.6	74.0	61.5	54.2
	Quintile 4	63.6	75.8	61.4	62.1	45.4	39.0
	Quintile 5	54.2	70.6	57.6	53.5	41.9	35.6
Placed June deadline applicants per 10,000 population	Quintile 1	20.5	20.2	19.4	21.0	21.8	19.3
	Quintile 2	19.4	22.3	17.1	19.9	17.8	17.0
	Quintile 3	14.1	16.6	13.0	15.0	12.3	11.9
	Quintile 4	11.1	11.2	8.5	8.8	8.1	5.4
	Quintile 5	9.6	9.8	7.4	7.0	6.1	5.1
All placed applicants per 10,000 population	Quintile 1	21.4	21.5	21.3	25.1	26.5	23.7
	Quintile 2	20.2	23.4	21.0	23.8	22.0	20.9
	Quintile 3	14.7	17.9	15.5	18.3	14.8	14.5
	Quintile 4	11.7	12.3	10.5	10.9	9.9	6.6
	Quintile 5	9.7	10.6	8.2	9.5	7.3	6.5

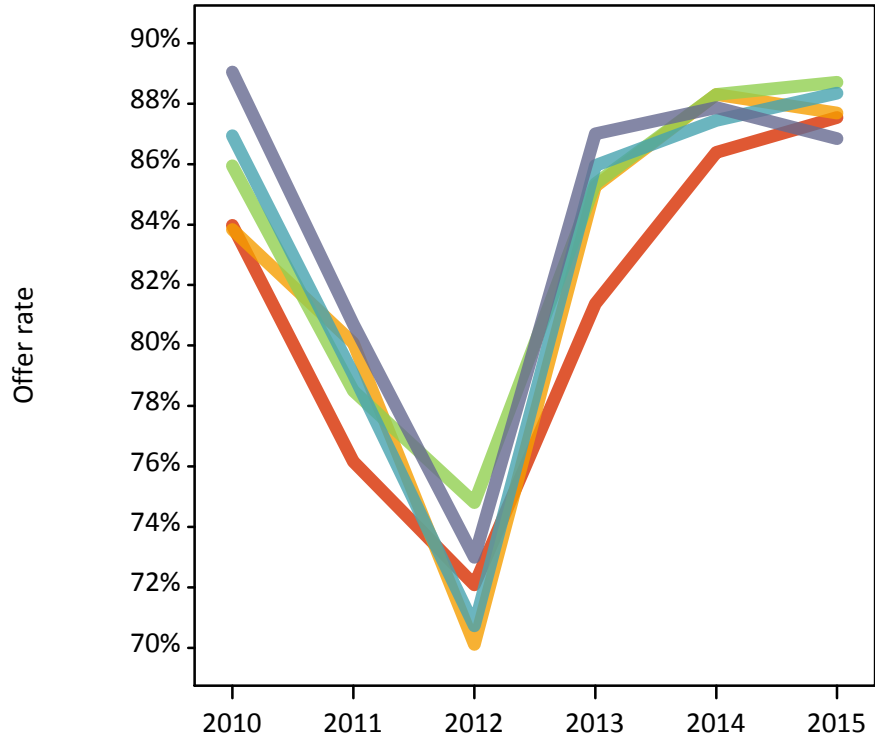
## P.8 18 year old applications by POLAR3 quintile

Statistic	POLAR3 quintile	2010	2011	2012	2013	2014	2015
June deadline applications	Quintile 1	1,585	1,680	1,560	1,505	1,365	1,325
	Quintile 2	1,540	1,805	1,530	1,480	1,290	1,260
	Quintile 3	1,375	1,560	1,405	1,325	1,085	985
	Quintile 4	1,150	1,355	1,105	1,095	765	680
	Quintile 5	1,050	1,315	1,070	1,000	750	645
Offers	Quintile 1	1,330	1,280	1,125	1,225	1,180	1,160
	Quintile 2	1,290	1,445	1,070	1,260	1,140	1,105
	Quintile 3	1,180	1,225	1,050	1,130	960	870
	Quintile 4	1,000	1,070	785	940	670	600
	Quintile 5	935	1,060	780	870	660	560
Offer rate	Quintile 1	84.0%	76.2%	72.1%	81.4%	86.4%	87.5%
	Quintile 2	83.8%	80.1%	70.1%	85.3%	88.3%	87.7%
	Quintile 3	85.9%	78.5%	74.8%	85.3%	88.3%	88.7%
	Quintile 4	86.9%	79.0%	70.7%	85.9%	87.5%	88.3%
	Quintile 5	89.0%	80.7%	73.0%	87.0%	87.9%	86.8%
Average offer rate	Quintile 1	84.9%	78.0%	71.0%	83.3%	86.6%	87.0%
	Quintile 2	84.3%	79.3%	70.9%	84.7%	87.8%	87.6%
	Quintile 3	86.1%	78.1%	72.9%	84.5%	88.9%	87.9%
	Quintile 4	86.1%	79.1%	72.8%	86.1%	87.8%	89.0%
	Quintile 5	87.7%	79.8%	73.8%	85.9%	87.3%	88.8%
Percentage point difference between offer rate and average offer rate	Quintile 1	-0.9	-1.8	1.1	-1.9	-0.2	0.5
	Quintile 2	-0.5	0.8	-0.8	0.5	0.6	0.1
	Quintile 3	-0.2	0.4	1.9	0.9	-0.6	0.8
	Quintile 4	0.9	-0.1	-2.0	-0.1	-0.3	-0.6
	Quintile 5	1.4	0.9	-0.8	1.1	0.6	-2.0
Contribution of group to the average offer rate	Quintile 1	0.329	0.304	0.324	0.323	0.356	0.369
	Quintile 2	0.312	0.315	0.314	0.310	0.346	0.344
	Quintile 3	0.291	0.281	0.299	0.292	0.298	0.296
	Quintile 4	0.277	0.262	0.266	0.267	0.266	0.248
	Quintile 5	0.272	0.263	0.275	0.277	0.266	0.254

### P.9 18 year old offer rate by POLAR3 quintile

Note: The line for a group is not plotted when that group made fewer than 10 applications in any of the years from 2010-2015.

- Quintile 1
- Quintile 2
- Quintile 3
- Quintile 4
- Quintile 5



### P.10 Percentage point difference between 18 year old offer rate and average offer rate by POLAR3 quintile

Note: The line for a group is not plotted when that group made fewer than 50 applications in any of the years from 2010-2015.

- Quintile 1
- Quintile 2
- Quintile 3
- Quintile 4
- Quintile 5



## P.11 18 year old applicants by ethnic group

Statistic	Ethnic group	2010	2011	2012	2013	2014	2015
June deadline applicants	Asian	170	275	295	300	260	245
	Black	75	145	115	130	100	110
	Mixed	80	125	100	110	75	95
	White	5,140	5,770	4,975	4,835	4,040	3,670
	Other	10	20	30	35	15	25
Placed June deadline applicants	Asian	35	35	50	50	50	50
	Black	15	10	10	10	10	15
	Mixed	10	25	5	15	10	10
	White	1,100	1,150	920	990	905	800
	Other	0	0	5	5	5	5
All placed applicants	Asian	40	45	65	70	60	70
	Black	15	10	10	15	10	15
	Mixed	10	25	10	20	10	15
	White	1,140	1,220	1,070	1,195	1,100	970
	Other	0	5	5	5	5	5
June deadline applicants per 10,000 population	Asian	27.8	43.5	45.4	45.3	38.6	34.5
	Black	29.0	53.8	41.2	43.1	33.3	33.9
	Mixed	34.1	51.6	38.4	41.1	26.8	31.5
	White	76.7	89.1	77.0	76.9	65.5	58.9
	Other	15.6	23.5	33.9	36.4	17.2	28.0
Placed June deadline applicants per 10,000 population	Asian	5.8	5.9	7.7	7.3	7.1	6.9
	Black	5.3	2.9	3.2	3.0	3.0	4.1
	Mixed	4.7	9.9	2.3	6.3	3.1	3.9
	White	16.4	17.7	14.3	15.8	14.7	12.8
	Other	0.0	0.0	5.7	3.3	4.3	3.1
All placed applicants per 10,000 population	Asian	6.6	7.0	9.7	10.8	9.1	9.9
	Black	5.3	2.9	3.9	5.1	3.6	4.7
	Mixed	5.2	10.7	3.1	7.4	3.5	4.9
	White	17.0	18.9	16.6	19.0	17.8	15.6
	Other	0.0	3.7	6.8	4.4	4.3	4.2



## P.12 18 year old applications by ethnic group

Statistic	Ethnic group	2010	2011	2012	2013	2014	2015
June deadline applications	Asian	225	325	345	330	305	300
	Black	80	150	120	135	110	110
	Mixed	85	140	105	125	80	105
	White	6,285	7,060	6,060	5,780	4,750	4,335
	Other	15	20	35	35	20	25
Offers	Asian	205	265	250	305	275	270
	Black	75	115	75	120	100	95
	Mixed	70	110	65	105	70	85
	White	5,365	5,565	4,395	4,870	4,150	3,820
	Other	15	15	25	30	20	25
Offer rate	Asian	92.4%	80.7%	72.5%	91.6%	89.3%	88.7%
	Black	91.4%	75.7%	61.7%	88.8%	90.8%	85.6%
	Mixed	81.2%	78.0%	62.3%	84.6%	87.5%	81.6%
	White	85.4%	78.8%	72.5%	84.3%	87.3%	88.1%
	Other	100.0%	77.3%	72.7%	85.7%	100.0%	100.0%
Average offer rate	Asian	91.5%	79.7%	72.6%	90.4%	91.8%	88.8%
	Black	87.8%	81.3%	66.1%	89.9%	90.2%	91.0%
	Mixed	87.9%	78.8%	70.3%	89.2%	88.0%	89.2%
	White	85.4%	78.7%	72.2%	84.2%	87.2%	87.7%
	Other	84.2%	83.3%	77.8%	89.6%	97.9%	89.1%
Percentage point difference between offer rate and average offer rate	Asian	0.9	1.0	-0.0	1.2	-2.6	-0.1
	Black	3.5	-5.6	-4.4	-1.1	0.7	-5.4
	Mixed	-6.7	-0.8	-8.0	-4.6	-0.5	-7.7
	White	0.0	0.1	0.2	0.1	0.2	0.3
	Other	N/A	N/A	N/A	N/A	N/A	N/A
Contribution of group to the average offer rate	Asian	0.254	0.234	0.261	0.286	0.282	0.246
	Black	0.133	0.121	0.136	0.145	0.157	0.175
	Mixed	0.112	0.121	0.109	0.118	0.124	0.171
	White	0.949	0.929	0.926	0.927	0.925	0.910
	Other	0.061	0.106	0.142	0.122	0.186	0.139

**P.13 18 year old offer rate by ethnic group**

Note: The line for a group is not plotted when that group made fewer than 10 applications in any of the years from 2010-2015.

- Asian
- Black
- Mixed
- White
- Other



**P.14 Percentage point difference between 18 year old offer rate and average offer rate by ethnic group**

Note: The line for a group is not plotted when that group made fewer than 50 applications in any of the years from 2010-2015.

- Asian
- Black
- Mixed
- White
- Other



### P.15 Applicants (all ages)

Statistic	2010	2011	2012	2013	2014	2015
June deadline applicants	9,715	11,570	9,660	9,400	8,220	7,640
Placed June deadline applicants	2,260	2,375	1,875	2,070	2,015	1,745
All placed applicants	2,385	2,560	2,270	2,550	2,470	2,245

### P.16 Applications (all ages)

Statistic	2010	2011	2012	2013	2014	2015
June deadline applications	12,130	14,365	11,875	11,280	9,885	9,160
Offers	9,195	10,090	7,770	8,900	8,085	7,455
Offer rate	75.8%	70.3%	65.4%	78.9%	81.8%	81.4%

### P.17 Applicants (all ages) by sex

Statistic	Sex	2010	2011	2012	2013	2014	2015
June deadline applicants	Men	4,285	5,345	4,400	4,260	3,545	3,275
	Women	5,425	6,225	5,260	5,140	4,675	4,365
Placed June deadline applicants	Men	1,005	1,110	795	870	815	680
	Women	1,250	1,270	1,075	1,200	1,200	1,065
All placed applicants	Men	1,045	1,185	960	1,085	1,000	895
	Women	1,335	1,375	1,310	1,465	1,470	1,350

### P.18 Applications (all ages) by sex

Statistic	Sex	2010	2011	2012	2013	2014	2015
June deadline applications	Men	5,455	6,725	5,390	5,110	4,290	3,915
	Women	6,675	7,640	6,485	6,165	5,595	5,245
Offers	Men	4,320	4,920	3,525	4,095	3,590	3,250
	Women	4,870	5,170	4,245	4,805	4,495	4,205
Offer rate	Men	79.2%	73.2%	65.4%	80.1%	83.7%	83.0%
	Women	73.0%	67.7%	65.4%	78.0%	80.3%	80.1%

### P.19 Applicants (all ages) by POLAR3 quintile

Statistic	POLAR3 quintile	2010	2011	2012	2013	2014	2015
June deadline applicants	Quintile 1	2,370	2,720	2,370	2,315	2,175	2,075
	Quintile 2	2,195	2,595	2,165	2,125	1,920	1,830
	Quintile 3	1,955	2,300	1,925	1,900	1,665	1,480
	Quintile 4	1,650	1,975	1,600	1,600	1,250	1,150
	Quintile 5	1,530	1,945	1,585	1,450	1,190	1,070
Placed June deadline applicants	Quintile 1	625	625	570	630	650	545
	Quintile 2	580	640	490	540	510	495
	Quintile 3	445	465	365	440	385	345
	Quintile 4	315	335	230	265	255	200
	Quintile 5	285	300	220	190	210	165
All placed applicants	Quintile 1	670	670	670	750	790	690
	Quintile 2	605	675	600	665	640	605
	Quintile 3	470	510	445	535	470	460
	Quintile 4	335	370	280	325	305	255
	Quintile 5	300	325	265	275	255	230

### P.20 Applications (all ages) by POLAR3 quintile

Statistic	POLAR3 quintile	2010	2011	2012	2013	2014	2015
June deadline applications	Quintile 1	3,115	3,555	3,060	2,925	2,765	2,620
	Quintile 2	2,885	3,400	2,795	2,635	2,360	2,270
	Quintile 3	2,450	2,835	2,395	2,285	1,990	1,780
	Quintile 4	1,890	2,320	1,815	1,790	1,410	1,290
	Quintile 5	1,765	2,215	1,795	1,630	1,330	1,170
Offers	Quintile 1	2,300	2,400	1,935	2,230	2,215	2,125
	Quintile 2	2,140	2,395	1,805	2,090	1,945	1,875
	Quintile 3	1,875	1,975	1,605	1,825	1,660	1,445
	Quintile 4	1,470	1,675	1,195	1,430	1,150	1,035
	Quintile 5	1,390	1,620	1,210	1,315	1,095	950
Offer rate	Quintile 1	73.8%	67.5%	63.3%	76.3%	80.0%	81.1%
	Quintile 2	74.2%	70.4%	64.7%	79.2%	82.4%	82.7%
	Quintile 3	76.5%	69.7%	67.0%	79.9%	83.4%	81.1%
	Quintile 4	77.7%	72.2%	65.9%	80.0%	81.8%	80.2%
	Quintile 5	78.9%	73.2%	67.5%	80.8%	82.3%	81.2%

## P.21 Applicants (all ages) by ethnic group

Statistic	Ethnic group	2010	2011	2012	2013	2014	2015
June deadline applicants	Asian	425	640	655	660	595	505
	Black	325	435	375	370	300	365
	Mixed	170	245	200	205	160	175
	White	8,720	10,130	8,325	8,045	7,075	6,500
	Other	40	65	75	80	70	65
Placed June deadline applicants	Asian	90	100	110	105	110	90
	Black	50	45	45	60	45	40
	Mixed	35	50	20	35	30	30
	White	2,070	2,155	1,680	1,850	1,815	1,570
	Other	10	15	15	10	15	10
All placed applicants	Asian	105	120	140	150	160	155
	Black	50	60	65	80	65	90
	Mixed	35	55	20	45	35	40
	White	2,175	2,300	1,995	2,240	2,170	1,945
	Other	10	15	25	15	20	10

## P.22 Applications (all ages) by ethnic group

Statistic	Ethnic group	2010	2011	2012	2013	2014	2015
June deadline applications	Asian	550	790	790	750	700	605
	Black	370	480	420	395	320	385
	Mixed	190	285	225	230	175	200
	White	10,930	12,665	10,315	9,760	8,580	7,860
	Other	50	80	90	95	80	65
Offers	Asian	430	585	535	630	595	515
	Black	225	285	220	280	245	250
	Mixed	140	185	130	175	135	150
	White	8,335	8,930	6,800	7,705	7,015	6,460
	Other	35	60	60	70	65	50
Offer rate	Asian	78.8%	73.7%	67.7%	84.2%	85.2%	84.9%
	Black	61.4%	59.1%	52.5%	71.0%	76.4%	64.8%
	Mixed	72.9%	65.3%	58.7%	77.0%	78.3%	75.9%
	White	76.3%	70.5%	65.9%	79.0%	81.8%	82.2%
	Other	68.6%	75.6%	65.9%	74.2%	81.5%	77.3%

## Technical Notes and Definitions

### UCAS undergraduate scheme

#### Adjustment

Adjustment allows applicants who have met and exceeded the terms of their conditional firm offer to seek and find a place at another provider whilst keeping their place at their original firm choice provider.

#### Clearing

Clearing is a route for applicants that are not placed and holding no offers to find a place on courses with vacancies.

#### Cycle year

The UCAS application cycle which runs from September to October the following year. For example the 2015 cycle runs from September 2014 through to October 2015.

#### End of cycle

The point in the cycle to which the numbers in this report refer, and the point at which the cycle is closed such that no more applications or offers can be made, and no more applicants can be placed. Numbers reported at the end of cycle exclude information on a small number of applicants who cancelled during the cycle.

#### Extra

Applicants who are unsuccessful in obtaining an offer or decline all offers may be eligible to apply through Extra, where they can apply to one further course at a time. Extra operates from 25 February until early July. It provides applicants who are eligible the possibility of obtaining an offer before exam results are published and Clearing starts.

#### June 30 deadline

The deadline for main scheme applications. Applicants who apply after this date will go directly into Clearing.

#### Record of Prior Acceptance (RPA)

RPA is an acceptance route used when a provider informs UCAS of applicants it has accepted outside of the normal application process (e.g. individuals who have applied directly to the provider).

### Reporting groups

#### Ethnic group

High level grouping of ethnic origin as declared by the applicant: 'White', 'Black', 'Asian', 'Mixed', 'Other', 'Unknown'. Applicants who declare themselves as 'Unknown' ethnic origin are not reported in these tables, but are included in the associated csv data file.

#### POLAR3 quintile

Developed by HEFCE, POLAR3 classifies small areas across the UK into five groups according to their level of young participation in Higher Education. Each of these groups represents around 20 per cent of young people and is ranked from Quintile 1 (areas with the lowest young participation rates, considered as the most disadvantaged) to Quintile 5 (highest young participation rates, considered most advantaged). POLAR3 is based on the participation rates of young people between 2005 and 2009 who entered Higher Education between 2005-06 and 2010-11, therefore is most suitable for applicants aged 19 and under. These groups are assigned using the postcode declared by the applicant at the time of their application. If a UK postcode is invalid, considered unsafe for measurement or there is no link to Census geography possible then the applicant is not assigned to a quintile. Applicants with no POLAR3 quintile are not reported.

#### Sex

Sex as declared by the applicant.

### **SIMD quintile**

Scottish index of multiple deprivation (SIMD) for 2012 identifies small area concentrations of multiple deprivation across all of Scotland, providing a relative measure of deprivation amongst 6505 small areas (data zones) based on 7 socio-economic domains. These small areas are classified into five groups ranked from Quintile 1 (considered the most deprived) to Quintile 5 (considered least deprived), with equal populations in each quintile. Quintiles are assigned using the postcode declared by the applicant, applicants declaring invalid postcodes are classified as 'Not assigned' and are not reported.

SIMD is only defined for applicants domiciled in Scotland, therefore any applicants domiciled outside of Scotland cannot be assigned to an SIMD quintile and so are not reported for this measure.

SIMD is only reported for providers in Scotland. Application and entry rates by SIMD are reported in the 2015 End of Cycle Report and the 2016 cycle January deadline application rate report.

### **Statistics reported in the tables**

#### **All placed applicants**

The number of applicants placed for entry into higher education at the provider through one of their choices, including any choices made through Extra, or via Adjustment, Clearing or RPA.

#### **All placed applicants per 10,000 population**

The number of total UK domiciled 18 year old placed applicants for entry into higher education at the provider divided by the number of UK 18 year olds in the population, multiplied by 10,000. This gives the number of 18 year olds, for every 10,000 in the population, that were placed at the provider through one of their choices, including any choices made through Extra, or via Adjustment, Clearing or RPA. It is an alternative way of expressing the entry rate to a provider. By referencing the underlying population this statistic shows how the number of placed applicants is changing in relation to the available pool of potential applicants and so gives the chance that somebody from the group will be placed at a provider.

This statistic is only reported for 18 year olds.

#### **Average offer rate**

The offer rate that you might expect if the predicted grades and subject choice of applicants were the only factors that influenced whether an applicant was made an offer by the provider. The average offer rate is calculated by dividing applicants according to their specific combination of grades (for A levels the best three predicted grades are used, for BTECs, International Baccalaureate and Scottish Highers and Advanced Highers, predicted grades along with any grades already achieved upon applying are used) and subject choice. For each combination the number of main scheme offers is divided by the number of main scheme applications, to give an overall offer rate. This is then multiplied by the number of applications made by the group for which the average offer rate is being calculated (for example POLAR3 quintile 1), to give an average number of offers for that group. These average number of offers are then added together across all combinations of predicted grade and subject and divided by the number of main scheme applications from the group to give the average offer rate.

The average offer rate does not attempt to control for any other factors that may play a part in the decision to make an offer, such as the subject of the qualifications studied, their relevance to a course, or the grade in each subject; higher numbers of A levels being studied; the exact profile of grades predicted; personal statements; teacher references; interviews; or any other criteria (such as work experience or portfolios) that may be part of the admissions decision.

This statistic is only reported for 18 year olds.



### Contribution of group to the average offer rate

The way in which the average offer rate is defined means that the pattern of application and offers of a group (for example POLAR3 quintile 1) will always contribute, in part, to the average offer rate for that group. When this contribution is large, the average offer rate will mainly reflect the patterns for the group, meaning that the value of the average offer rate will be similar to the offer rate, the percentage point difference statistic will be small, and any real difference between the offer rate and what might be expected given the predicted grades and subject choices of the applicants will be difficult to detect.

Values of the contribution of group to the average offer rate range between 0 and 1. The closer the value is to 1 the greater the contribution a group makes to its own average offer rate.

This statistic is only reported for 18 year olds.

### Placed June deadline applicants

An applicant who has been placed for entry into higher education at the provider through a June deadline application.

### Placed June deadline applicants per 10,000 population

The number of UK domiciled 18 year old placed June deadline applicants at the provider divided by the number of UK 18 year olds in the population, multiplied by 10,000. This gives the number of 18 year olds, for every 10,000 in the population, that were placed at the provider through one of their June deadline applications. It is an alternative way of expressing the entry rate to a provider, but for placed June deadline applicants only. By referencing the underlying population this statistic shows how the number of placed June deadline applicants is changing in relation to the available pool of potential 18 year old applicants and so gives the chance that somebody from the group will be placed at a provider through a June deadline application.

This statistic is only reported for 18 year olds.

### June deadline applications

An application (or choice) to a course in higher education to the provider that is made by the June 30 deadline. Each applicant can make up to five choices this way. The number of June deadline applications does not include choices made through the following routes: Clearing, Extra, Adjustment and RPAs. Applications made to October deadline courses received after the October deadline are not included in these statistics.

### June deadline applicants

The number of applicants that made at least one application to the provider by the June 30 deadline.

### June deadline applicants per 10,000 population

The number of UK domiciled 18 year old June deadline applicants to the provider divided by the number of UK 18 year olds in the population, multiplied by 10,000. This gives the number of 18 year olds, for every 10,000 in the population, who applied by the June 30 deadline. It is equivalent to the application rate. By referencing the underlying population this statistic shows how the number of June deadline applicants is changing in relation to the available pool of potential 18 year old applicants and so gives the chance that somebody from the group will apply to a provider by the June 30 deadline.

This statistic is only reported for 18 year olds.

### Offers

An offer is defined as a provider's decision in response to an application to offer a place to an applicant, often subject to the applicant satisfying academic and/or other criteria, via a June deadline application (i.e. does not cover choices made through the following routes: Clearing, Extra, Adjustment and RPAs).

### Offer rate

The number of offers made divided by the number of June deadline applications. This gives the proportion of all June deadline applications to the provider that received an offer.

### Percentage point difference between offer rate and average offer rate

The offer rate minus the average offer rate.

The percentage point difference can be compared to the expected range of statistical variation resulting from the calculation of the average offer rate using the Average Offer Rate Lookup Table. Where the value of the percentage point difference lies outside of this range, the percentage point difference may be considered to represent a real difference between the offer rate and the average offer rate.

### Other definitions

#### Age

This analysis uses country-specific age definitions that align with the cut off points for school and college cohorts within the different administrations of the UK. For England and Wales, ages are defined on the 31 August, for Northern Ireland on the 1 July and for Scotland on the 28 February the following year. Defining ages in this way matches the assignment of children to school cohorts. For applicants outside of the UK a cohort cut off of 31 August has been used.

#### Provider

A higher education provider - a university or college.

#### UK domiciled

Declared area of permanent residence within England, Northern Ireland, Scotland and Wales. Applicants from the Channel Islands and Isle of Man are not included.