

U80 UCL (University College London)

Cycle years: 2010 - 2015

Cycle Reference Point: End of Cycle

Applicant coverage: UK domiciled

Reporting groups: Sex, POLAR3, ethnic group

Applicant statistics: June deadline applicants, placed June deadline applicants, all placed applicants, June deadline applicants per 10,000 population, placed June deadline applicants per 10,000 population, all placed applicants per 10,000 population

Application statistics: June deadline applications, offers, offer rate, average offer rate, percentage point difference between offer rate and average offer rate, contribution of group to the average offer rate

Non-disclosure controls: To avoid the disclosure of information about any individual the following measures are taken

- Applicants, placed applicants, applications and offers are rounded to the nearest 5.
- Applicants/placed applicants per 10,000 population figures are reported as 0 if the applicant/placed applicant figures are rounded to 0.
- All statistics related to the offer rate are not reported when the number of applications for a group is less than 10. The percentage point difference between the offer rate and the average offer rate is not reported when the number of applications for a group is less than 50.
- Offer rates are reported as 0% if there are fewer than 5 offers, and 100% if the number of offers is within 5 of the number of applications. When the offer rate is reported as 0% or 100%, it is reported in italics.

Contents:

18 year old applicants:	P.1
18 year old applications:	P.2
18 year old applicants by sex:	P.3
18 year old applications by sex:	P.4
18 year old applicants by POLAR3 quintile:	P.7
18 year old applications by POLAR3 quintile:	P.8
18 year old applicants by ethnic group:	P.11
18 year old applications by ethnic group:	P.12
Applicants (all ages):	P.15
Applications (all ages):	P.16
Applicants (all ages) by sex:	P.17
Applications (all ages) by sex:	P.18
Applicants (all ages) by POLAR3 quintile:	P.19
Applications (all ages) by POLAR3 quintile:	P.20
Applicants (all ages) by ethnic group:	P.21
Applications (all ages) by ethnic group:	P.22

P.1 18 year old applicants

Statistic	2010	2011	2012	2013	2014	2015
June deadline applicants	12,055	11,240	11,620	11,600	12,085	12,290
Placed June deadline applicants	1,655	1,420	1,810	1,910	1,925	1,870
All placed applicants	1,660	1,425	1,825	1,945	1,970	1,920
June deadline applicants per 10,000 population	152.7	146.0	150.2	152.4	160.4	160.4
Placed June deadline applicants per 10,000	21.0	18.4	23.4	25.1	25.5	24.4
All placed applicants per 10,000 population	21.0	18.5	23.6	25.6	26.2	25.0

P.2 18 year old applications

Statistic	2010	2011	2012	2013	2014	2015
June deadline applications	12,365	11,525	11,925	11,895	12,425	12,635
Offers	5,100	4,205	5,170	6,610	7,045	7,800
Offer rate	41.3%	36.5%	43.4%	55.6%	56.7%	61.7%

P.3 18 year old applicants by sex

Statistic	Sex	2010	2011	2012	2013	2014	2015
June deadline applicants	Men	5,910	5,710	5,890	5,805	6,125	6,165
	Women	6,145	5,530	5,730	5,795	5,960	6,125
Placed June deadline applicants	Men	825	735	880	910	925	910
	Women	830	685	930	1,005	1,000	960
All placed applicants	Men	825	740	890	925	950	930
	Women	835	685	935	1,020	1,025	990
June deadline applicants per 10,000 population	Men	147.1	145.1	148.5	148.7	158.2	157.1
	Women	158.5	146.9	152.0	156.4	162.8	163.9
Placed June deadline applicants per 10,000 population	Men	20.5	18.7	22.2	23.3	23.9	23.2
	Women	21.4	18.2	24.7	27.1	27.3	25.7
All placed applicants per 10,000 population	Men	20.6	18.8	22.5	23.7	24.5	23.7
	Women	21.5	18.2	24.8	27.6	27.9	26.5

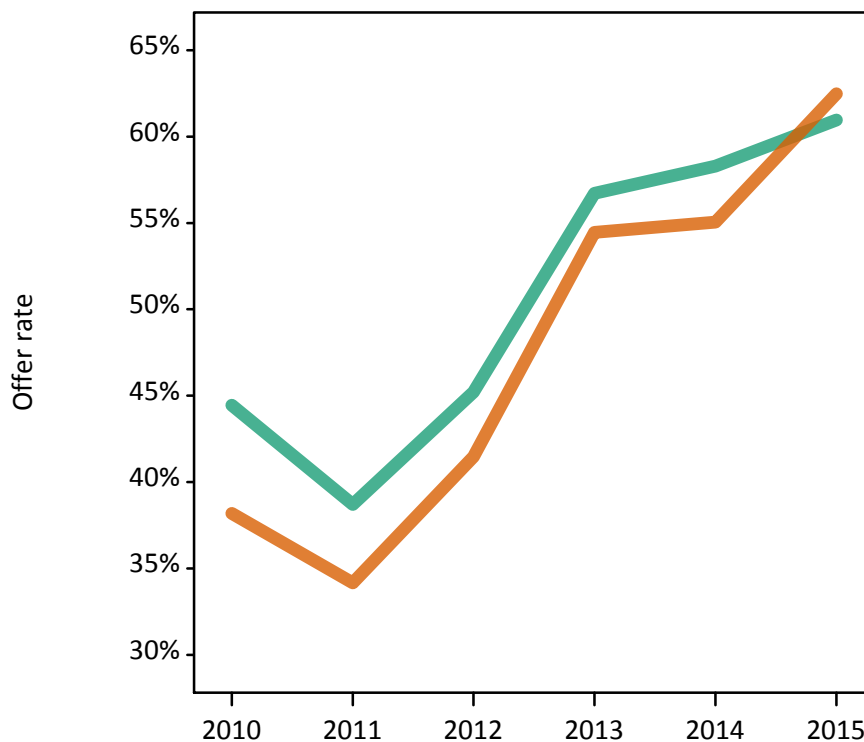
P.4 18 year old applications by sex

Statistic	Sex	2010	2011	2012	2013	2014	2015
June deadline applications	Men	6,060	5,875	6,055	5,955	6,285	6,310
	Women	6,305	5,655	5,870	5,935	6,140	6,330
Offers	Men	2,695	2,275	2,740	3,380	3,665	3,845
	Women	2,405	1,930	2,435	3,235	3,380	3,955
Offer rate	Men	44.4%	38.7%	45.2%	56.7%	58.3%	61.0%
	Women	38.2%	34.2%	41.5%	54.5%	55.0%	62.5%
Average offer rate	Men	44.9%	39.2%	45.8%	57.4%	58.3%	61.9%
	Women	37.7%	33.7%	40.9%	53.8%	55.0%	61.5%
Percentage point difference between offer rate and average offer rate	Men	-0.5	-0.5	-0.5	-0.7	-0.0	-0.9
	Women	0.5	0.5	0.6	0.7	0.0	0.9
Contribution of group to the average offer rate	Men	0.582	0.606	0.598	0.602	0.604	0.607
	Women	0.598	0.590	0.585	0.601	0.595	0.608

P.5 18 year old offer rate by sex

Note: The line for a group is not plotted when that group made fewer than 10 applications in any of the years from 2010-2015.

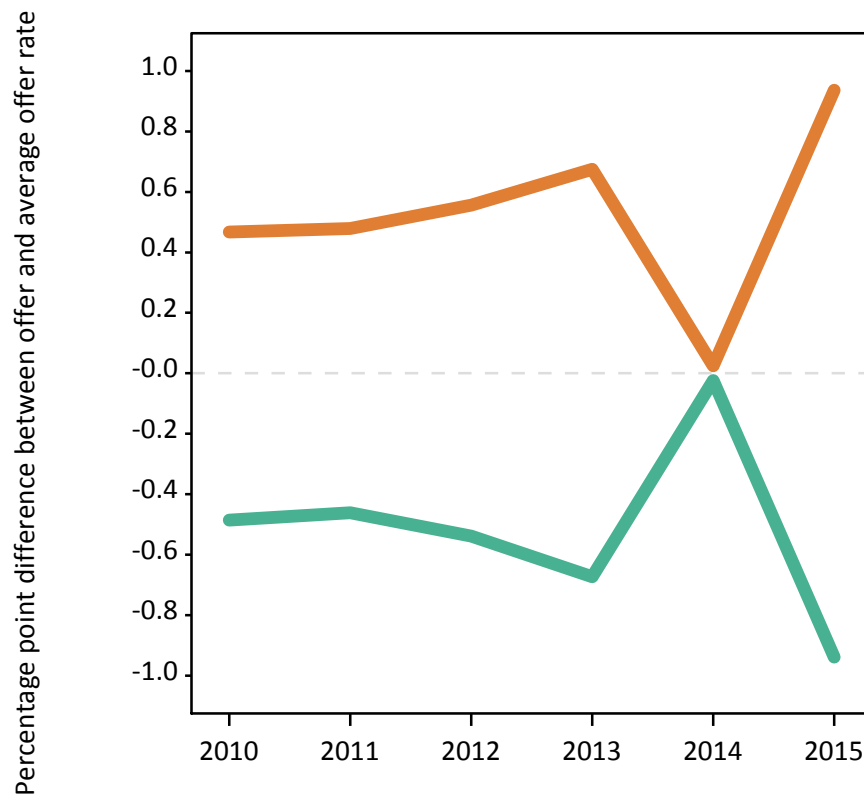
Men
Women



P.6 Percentage point difference between 18 year old offer rate and average offer rate by sex

Note: The line for a group is not plotted when that group made fewer than 50 applications in any of the years from 2010-2015.

Men
Women



P.7 18 year old applicants by POLAR3 quintile

Statistic	POLAR3 quintile	2010	2011	2012	2013	2014	2015
June deadline applicants	Quintile 1	485	460	470	510	515	525
	Quintile 2	1,005	940	960	975	1,010	1,085
	Quintile 3	1,895	1,725	1,780	1,835	1,980	1,985
	Quintile 4	2,905	2,690	2,825	2,765	2,830	2,930
	Quintile 5	5,720	5,385	5,530	5,485	5,720	5,705
Placed June deadline applicants	Quintile 1	70	40	75	90	75	60
	Quintile 2	120	115	125	140	160	150
	Quintile 3	250	195	260	295	295	285
	Quintile 4	355	335	435	465	420	440
	Quintile 5	855	730	910	920	965	925
All placed applicants	Quintile 1	70	40	75	90	75	60
	Quintile 2	120	115	125	140	165	150
	Quintile 3	250	200	260	300	305	300
	Quintile 4	355	335	440	475	435	455
	Quintile 5	860	730	920	935	985	940
June deadline applicants per 10,000 population	Quintile 1	32.7	32.0	33.0	36.6	36.9	37.6
	Quintile 2	65.3	62.6	64.1	66.1	68.9	73.0
	Quintile 3	119.3	112.2	115.3	120.5	131.5	129.3
	Quintile 4	182.4	171.9	178.1	176.8	183.6	187.3
	Quintile 5	337.6	325.4	329.2	331.7	350.7	340.8
Placed June deadline applicants per 10,000 population	Quintile 1	4.7	2.9	5.1	6.5	5.4	4.3
	Quintile 2	7.9	7.6	8.4	9.6	11.0	10.0
	Quintile 3	15.7	12.7	16.8	19.3	19.7	18.5
	Quintile 4	22.2	21.3	27.4	29.6	27.3	28.2
	Quintile 5	50.6	44.0	54.2	55.7	59.2	55.4
All placed applicants per 10,000 population	Quintile 1	4.7	2.9	5.1	6.5	5.4	4.4
	Quintile 2	7.9	7.6	8.5	9.6	11.1	10.2
	Quintile 3	15.7	12.9	16.9	19.8	20.3	19.4
	Quintile 4	22.2	21.5	27.8	30.2	28.2	29.2
	Quintile 5	50.7	44.1	54.6	56.6	60.5	56.2

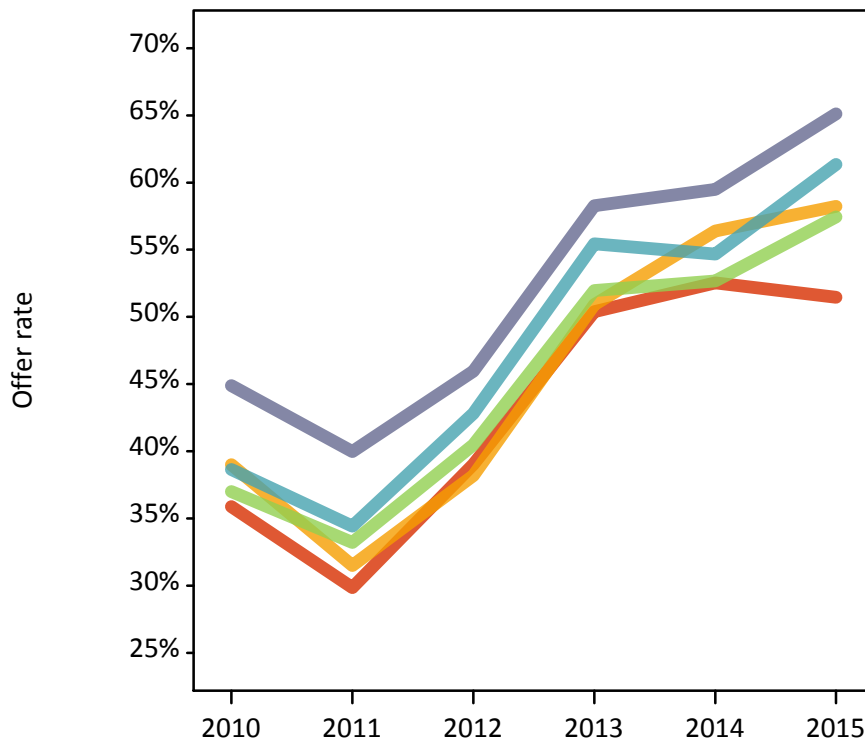
P.8 18 year old applications by POLAR3 quintile

Statistic	POLAR3 quintile	2010	2011	2012	2013	2014	2015
June deadline applications	Quintile 1	495	470	485	520	530	545
	Quintile 2	1,030	970	985	990	1,040	1,110
	Quintile 3	1,955	1,770	1,815	1,890	2,045	2,040
	Quintile 4	2,985	2,755	2,900	2,830	2,895	3,010
	Quintile 5	5,860	5,530	5,680	5,630	5,880	5,875
Offers	Quintile 1	180	140	190	265	280	280
	Quintile 2	400	305	375	505	585	645
	Quintile 3	725	585	735	985	1,075	1,170
	Quintile 4	1,155	950	1,240	1,570	1,585	1,845
	Quintile 5	2,630	2,210	2,610	3,280	3,495	3,825
Offer rate	Quintile 1	35.9%	29.9%	39.0%	50.4%	52.5%	51.5%
	Quintile 2	39.0%	31.5%	38.2%	50.9%	56.4%	58.2%
	Quintile 3	37.0%	33.2%	40.5%	52.0%	52.7%	57.4%
	Quintile 4	38.6%	34.4%	42.8%	55.4%	54.7%	61.3%
	Quintile 5	44.9%	40.0%	46.0%	58.3%	59.5%	65.1%
Average offer rate	Quintile 1	37.6%	31.9%	40.4%	50.8%	51.9%	53.8%
	Quintile 2	39.3%	32.2%	40.0%	52.9%	54.4%	58.3%
	Quintile 3	38.3%	33.8%	40.2%	52.8%	53.8%	58.5%
	Quintile 4	40.6%	35.2%	43.1%	55.4%	55.9%	61.9%
	Quintile 5	43.2%	39.1%	45.5%	57.6%	58.9%	64.2%
Percentage point difference between offer rate and average offer rate	Quintile 1	-1.8	-2.0	-1.4	-0.4	0.7	-2.3
	Quintile 2	-0.3	-0.7	-1.8	-2.0	1.9	-0.1
	Quintile 3	-1.3	-0.6	0.3	-0.9	-1.2	-1.1
	Quintile 4	-2.0	-0.7	-0.3	0.0	-1.2	-0.6
	Quintile 5	1.7	0.8	0.5	0.7	0.6	0.9
Contribution of group to the average offer rate	Quintile 1	0.114	0.111	0.104	0.120	0.102	0.115
	Quintile 2	0.153	0.157	0.146	0.143	0.137	0.146
	Quintile 3	0.223	0.216	0.211	0.215	0.227	0.221
	Quintile 4	0.293	0.293	0.285	0.278	0.281	0.279
	Quintile 5	0.522	0.530	0.515	0.513	0.515	0.509

P.9 18 year old offer rate by POLAR3 quintile

Note: The line for a group is not plotted when that group made fewer than 10 applications in any of the years from 2010-2015.

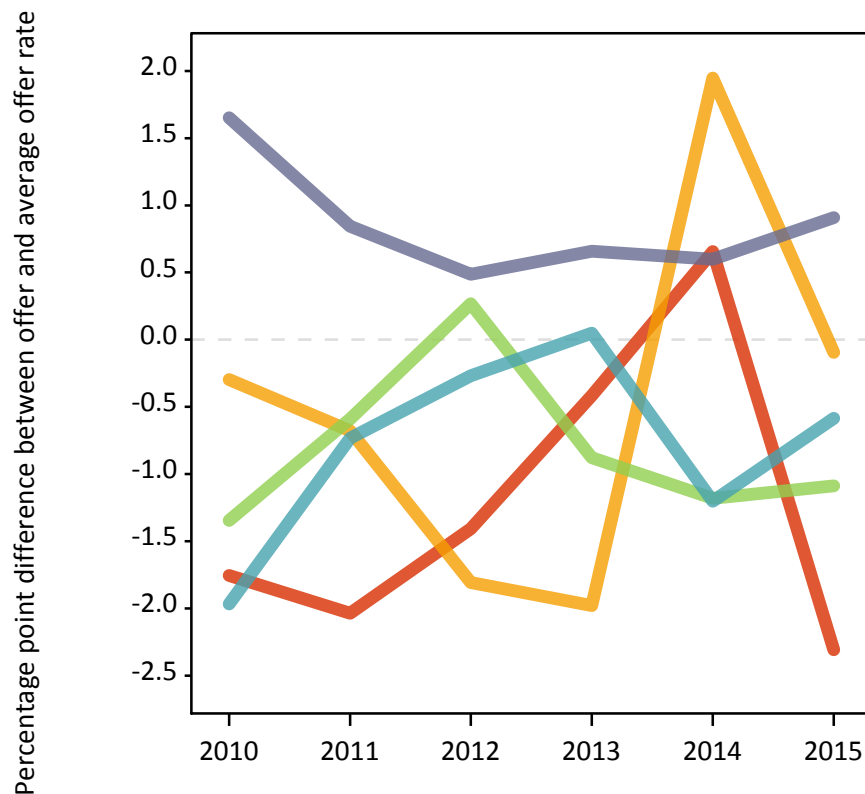
- Quintile 1
- Quintile 2
- Quintile 3
- Quintile 4
- Quintile 5



P.10 Percentage point difference between 18 year old offer rate and average offer rate by POLAR3 quintile

Note: The line for a group is not plotted when that group made fewer than 50 applications in any of the years from 2010-2015.

- Quintile 1
- Quintile 2
- Quintile 3
- Quintile 4
- Quintile 5



P.11 18 year old applicants by ethnic group

Statistic	Ethnic group	2010	2011	2012	2013	2014	2015
June deadline applicants	Asian	2,965	2,675	2,815	2,985	3,190	3,370
	Black	620	585	585	610	665	700
	Mixed	665	770	840	750	845	865
	White	7,330	6,795	6,870	6,760	6,820	6,730
	Other	285	250	360	345	425	425
Placed June deadline applicants	Asian	380	315	465	485	525	525
	Black	50	50	55	65	75	80
	Mixed	90	100	150	135	120	150
	White	1,085	900	1,075	1,145	1,120	1,020
	Other	25	30	55	55	65	65
All placed applicants	Asian	385	325	475	505	545	545
	Black	50	50	60	65	75	85
	Mixed	90	100	150	135	125	155
	White	1,085	905	1,080	1,155	1,140	1,035
	Other	25	30	55	55	65	65
June deadline applicants per 10,000 population	Asian	479.8	424.8	435.0	452.7	470.6	476.4
	Black	236.9	214.7	207.7	205.8	218.7	220.0
	Mixed	287.0	318.3	322.9	277.8	294.0	279.9
	White	109.3	105.0	106.4	107.4	110.6	108.0
	Other	367.6	307.4	406.8	379.4	455.5	443.4
Placed June deadline applicants per 10,000 population	Asian	61.8	50.3	72.0	73.8	77.3	73.9
	Black	18.7	17.9	20.2	22.2	24.1	25.8
	Mixed	38.4	42.1	57.2	50.3	42.4	49.3
	White	16.2	13.9	16.6	18.2	18.2	16.3
	Other	33.8	38.3	61.0	60.7	68.8	67.5
All placed applicants per 10,000 population	Asian	62.3	51.3	73.3	76.7	80.7	77.0
	Black	18.7	17.9	20.6	22.6	25.1	27.3
	Mixed	38.4	42.1	57.6	50.7	43.4	50.9
	White	16.2	14.0	16.7	18.3	18.4	16.6
	Other	33.8	38.3	62.2	62.9	69.8	68.5

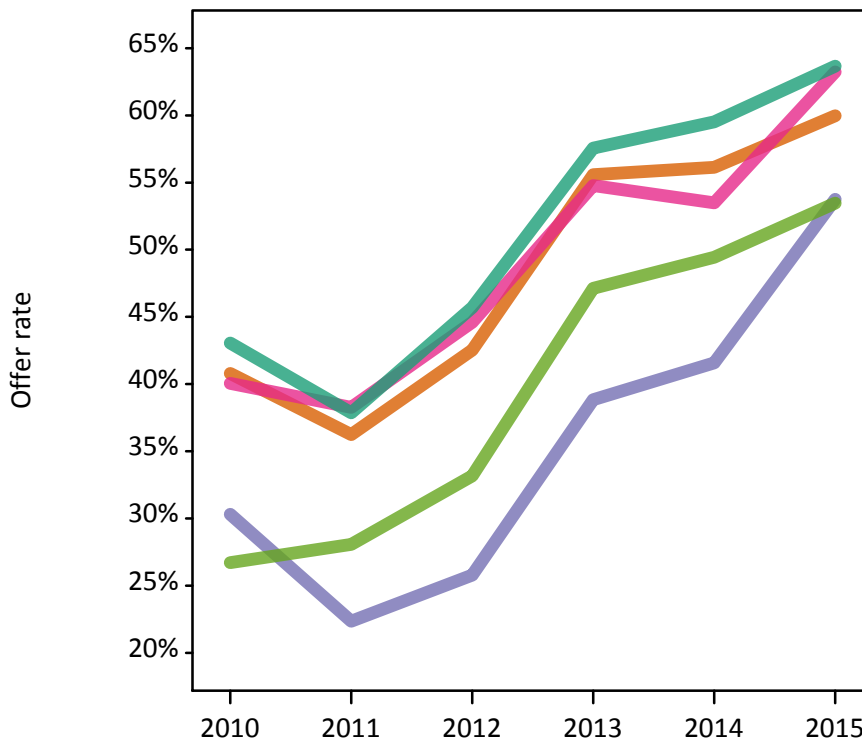
P.12 18 year old applications by ethnic group

Statistic	Ethnic group	2010	2011	2012	2013	2014	2015
June deadline applications	Asian	3,075	2,770	2,910	3,080	3,290	3,475
	Black	640	605	600	620	685	720
	Mixed	685	795	870	775	875	890
	White	7,480	6,925	7,010	6,905	6,990	6,905
	Other	290	260	375	365	445	445
Offers	Asian	1,255	1,005	1,235	1,710	1,850	2,085
	Black	195	135	155	240	285	385
	Mixed	275	305	390	425	465	565
	White	3,220	2,620	3,205	3,975	4,160	4,395
	Other	80	75	125	170	220	240
Offer rate	Asian	40.8%	36.2%	42.5%	55.6%	56.1%	60.0%
	Black	30.3%	22.4%	25.8%	38.8%	41.6%	53.8%
	Mixed	40.1%	38.3%	44.6%	54.8%	53.5%	63.2%
	White	43.1%	37.9%	45.7%	57.6%	59.5%	63.7%
	Other	26.7%	28.1%	33.2%	47.1%	49.4%	53.5%
Average offer rate	Asian	42.6%	37.9%	44.3%	55.9%	56.6%	61.0%
	Black	33.7%	27.2%	29.5%	42.4%	45.3%	54.9%
	Mixed	39.6%	36.5%	43.7%	55.0%	56.7%	60.7%
	White	41.7%	36.8%	44.4%	57.1%	58.2%	63.2%
	Other	33.5%	31.0%	38.8%	46.5%	53.7%	57.0%
Percentage point difference between offer rate and average offer rate	Asian	-1.8	-1.7	-1.8	-0.4	-0.5	-1.0
	Black	-3.4	-4.8	-3.8	-3.5	-3.7	-1.2
	Mixed	0.4	1.8	0.9	-0.2	-3.2	2.5
	White	1.4	1.0	1.3	0.5	1.4	0.5
	Other	-6.8	-2.9	-5.7	0.6	-4.3	-3.5
Contribution of group to the average offer rate	Asian	0.383	0.362	0.365	0.388	0.382	0.391
	Black	0.165	0.155	0.150	0.155	0.161	0.147
	Mixed	0.113	0.134	0.128	0.119	0.124	0.131
	White	0.684	0.669	0.660	0.666	0.643	0.632
	Other	0.101	0.125	0.131	0.118	0.118	0.111

P.13 18 year old offer rate by ethnic group

Note: The line for a group is not plotted when that group made fewer than 10 applications in any of the years from 2010-2015.

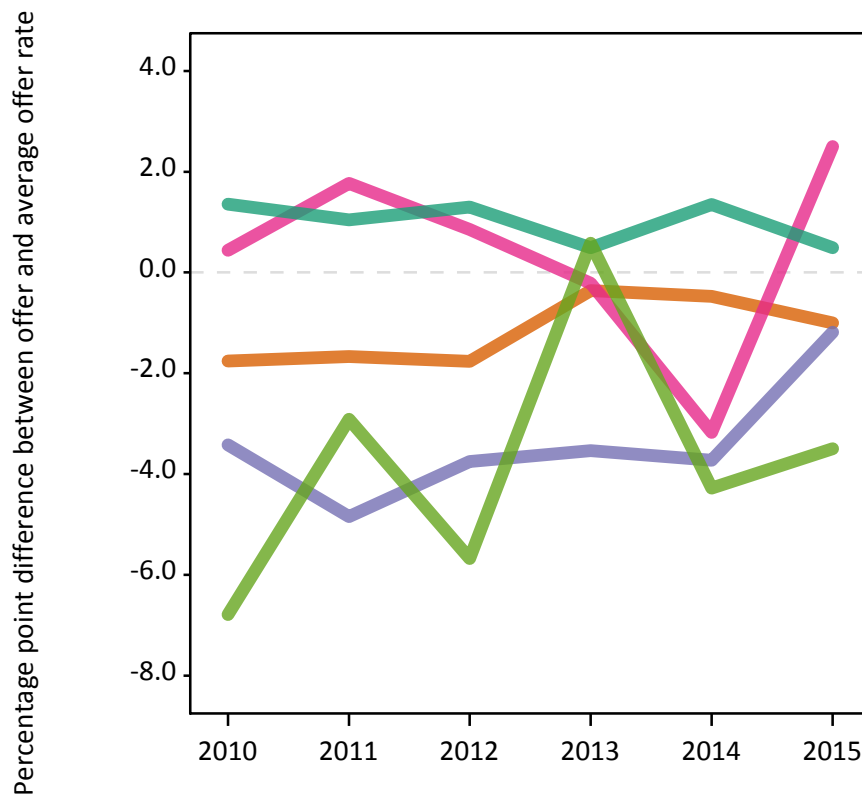
- Asian
- Black
- Mixed
- White
- Other



P.14 Percentage point difference between 18 year old offer rate and average offer rate by ethnic group

Note: The line for a group is not plotted when that group made fewer than 50 applications in any of the years from 2010-2015.

- Asian
- Black
- Mixed
- White
- Other



P.15 Applicants (all ages)

Statistic	2010	2011	2012	2013	2014	2015
June deadline applicants	19,435	18,195	16,810	17,885	18,630	19,280
Placed June deadline applicants	2,435	2,050	2,495	2,810	2,825	2,875
All placed applicants	2,440	2,055	2,535	2,875	2,900	2,955

P.16 Applications (all ages)

Statistic	2010	2011	2012	2013	2014	2015
June deadline applications	20,160	18,860	17,435	18,540	19,375	20,035
Offers	6,705	5,515	6,590	8,800	9,435	10,580
Offer rate	33.3%	29.2%	37.8%	47.5%	48.7%	52.8%

P.17 Applicants (all ages) by sex

Statistic	Sex	2010	2011	2012	2013	2014	2015
June deadline applicants	Men	9,645	9,285	8,660	9,075	9,465	9,645
	Women	9,790	8,910	8,150	8,810	9,165	9,635
Placed June deadline applicants	Men	1,220	1,045	1,240	1,355	1,400	1,355
	Women	1,210	1,005	1,255	1,455	1,425	1,520
All placed applicants	Men	1,225	1,050	1,260	1,380	1,440	1,385
	Women	1,215	1,005	1,275	1,490	1,460	1,570

P.18 Applications (all ages) by sex

Statistic	Sex	2010	2011	2012	2013	2014	2015
June deadline applications	Men	10,020	9,650	9,000	9,420	9,840	9,995
	Women	10,140	9,210	8,430	9,120	9,540	10,045
Offers	Men	3,555	2,960	3,525	4,545	4,890	5,195
	Women	3,150	2,555	3,070	4,255	4,545	5,385
Offer rate	Men	35.5%	30.7%	39.1%	48.3%	49.7%	52.0%
	Women	31.1%	27.7%	36.4%	46.6%	47.7%	53.6%

P.19 Applicants (all ages) by POLAR3 quintile

Statistic	POLAR3 quintile	2010	2011	2012	2013	2014	2015
June deadline applicants	Quintile 1	805	805	715	810	835	855
	Quintile 2	1,610	1,475	1,410	1,575	1,585	1,695
	Quintile 3	3,305	3,140	2,780	3,070	3,295	3,360
	Quintile 4	4,715	4,350	4,065	4,275	4,445	4,640
	Quintile 5	8,865	8,330	7,750	8,080	8,400	8,610
Placed June deadline applicants	Quintile 1	100	65	90	120	115	90
	Quintile 2	175	160	170	230	255	235
	Quintile 3	370	310	355	435	435	460
	Quintile 4	535	480	610	690	635	690
	Quintile 5	1,240	1,025	1,260	1,335	1,365	1,380
All placed applicants	Quintile 1	100	65	90	120	120	95
	Quintile 2	180	160	175	230	260	245
	Quintile 3	370	310	360	450	450	480
	Quintile 4	535	485	625	705	655	710
	Quintile 5	1,240	1,030	1,280	1,360	1,405	1,410

P.20 Applications (all ages) by POLAR3 quintile

Statistic	POLAR3 quintile	2010	2011	2012	2013	2014	2015
June deadline applications	Quintile 1	835	830	740	845	865	880
	Quintile 2	1,660	1,530	1,455	1,615	1,645	1,765
	Quintile 3	3,455	3,260	2,880	3,200	3,435	3,480
	Quintile 4	4,880	4,480	4,215	4,420	4,620	4,825
	Quintile 5	9,180	8,655	8,040	8,385	8,730	8,970
Offers	Quintile 1	235	180	230	350	390	380
	Quintile 2	505	410	470	710	805	865
	Quintile 3	965	815	955	1,330	1,465	1,650
	Quintile 4	1,530	1,250	1,590	2,060	2,140	2,505
	Quintile 5	3,435	2,835	3,325	4,335	4,600	5,130
Offer rate	Quintile 1	28.0%	21.9%	31.2%	41.2%	44.8%	42.9%
	Quintile 2	30.3%	26.7%	32.2%	44.0%	48.8%	49.1%
	Quintile 3	27.9%	25.0%	33.2%	41.6%	42.7%	47.5%
	Quintile 4	31.4%	27.9%	37.7%	46.6%	46.4%	51.9%
	Quintile 5	37.4%	32.8%	41.3%	51.7%	52.7%	57.2%

P.21 Applicants (all ages) by ethnic group

Statistic	Ethnic group	2010	2011	2012	2013	2014	2015
June deadline applicants	Asian	4,320	4,005	3,905	4,355	4,705	5,010
	Black	1,335	1,210	1,035	1,220	1,285	1,350
	Mixed	1,155	1,195	1,165	1,185	1,255	1,365
	White	11,710	10,955	9,850	10,210	10,375	10,420
	Other	520	480	570	615	735	780
Placed June deadline applicants	Asian	520	420	640	660	695	765
	Black	70	75	80	110	130	155
	Mixed	140	120	195	200	170	220
	White	1,615	1,355	1,485	1,705	1,700	1,590
	Other	45	40	75	90	95	95
All placed applicants	Asian	525	425	655	685	725	795
	Black	70	75	80	115	135	160
	Mixed	140	120	195	200	175	230
	White	1,620	1,355	1,490	1,720	1,730	1,615
	Other	45	40	75	95	100	100

P.22 Applications (all ages) by ethnic group

Statistic	Ethnic group	2010	2011	2012	2013	2014	2015
June deadline applications	Asian	4,500	4,175	4,070	4,530	4,895	5,215
	Black	1,390	1,255	1,065	1,245	1,330	1,395
	Mixed	1,205	1,245	1,205	1,235	1,305	1,425
	White	12,110	11,300	10,175	10,565	10,760	10,815
	Other	550	500	605	655	785	810
Offers	Asian	1,580	1,260	1,625	2,220	2,405	2,785
	Black	275	200	215	365	440	570
	Mixed	380	365	470	580	615	755
	White	4,215	3,480	4,015	5,235	5,550	5,935
	Other	125	105	170	255	315	345
Offer rate	Asian	35.1%	30.2%	40.0%	49.0%	49.1%	53.4%
	Black	19.8%	16.1%	20.1%	29.4%	33.1%	40.9%
	Mixed	31.5%	29.1%	39.0%	46.9%	47.0%	52.8%
	White	34.8%	30.8%	39.4%	49.6%	51.6%	54.9%
	Other	22.9%	20.7%	27.9%	39.1%	40.5%	42.7%

Technical Notes and Definitions

UCAS undergraduate scheme

Adjustment

Adjustment allows applicants who have met and exceeded the terms of their conditional firm offer to seek and find a place at another provider whilst keeping their place at their original firm choice provider.

Clearing

Clearing is a route for applicants that are not placed and holding no offers to find a place on courses with vacancies.

Cycle year

The UCAS application cycle which runs from September to October the following year. For example the 2015 cycle runs from September 2014 through to October 2015.

End of cycle

The point in the cycle to which the numbers in this report refer, and the point at which the cycle is closed such that no more applications or offers can be made, and no more applicants can be placed. Numbers reported at the end of cycle exclude information on a small number of applicants who cancelled during the cycle.

Extra

Applicants who are unsuccessful in obtaining an offer or decline all offers may be eligible to apply through Extra, where they can apply to one further course at a time. Extra operates from 25 February until early July. It provides applicants who are eligible the possibility of obtaining an offer before exam results are published and Clearing starts.

June 30 deadline

The deadline for main scheme applications. Applicants who apply after this date will go directly into Clearing.

Record of Prior Acceptance (RPA)

RPA is an acceptance route used when a provider informs UCAS of applicants it has accepted outside of the normal application process (e.g. individuals who have applied directly to the provider).

Reporting groups

Ethnic group

High level grouping of ethnic origin as declared by the applicant: 'White', 'Black', 'Asian', 'Mixed', 'Other', 'Unknown'. Applicants who declare themselves as 'Unknown' ethnic origin are not reported in these tables, but are included in the associated csv data file.

POLAR3 quintile

Developed by HEFCE, POLAR3 classifies small areas across the UK into five groups according to their level of young participation in Higher Education. Each of these groups represents around 20 per cent of young people and is ranked from Quintile 1 (areas with the lowest young participation rates, considered as the most disadvantaged) to Quintile 5 (highest young participation rates, considered most advantaged). POLAR3 is based on the participation rates of young people between 2005 and 2009 who entered Higher Education between 2005-06 and 2010-11, therefore is most suitable for applicants aged 19 and under. These groups are assigned using the postcode declared by the applicant at the time of their application. If a UK postcode is invalid, considered unsafe for measurement or there is no link to Census geography possible then the applicant is not assigned to a quintile. Applicants with no POLAR3 quintile are not reported.

Sex

Sex as declared by the applicant.

SIMD quintile

Scottish index of multiple deprivation (SIMD) for 2012 identifies small area concentrations of multiple deprivation across all of Scotland, providing a relative measure of deprivation amongst 6505 small areas (data zones) based on 7 socio-economic domains. These small areas are classified into five groups ranked from Quintile 1 (considered the most deprived) to Quintile 5 (considered least deprived), with equal populations in each quintile. Quintiles are assigned using the postcode declared by the applicant, applicants declaring invalid postcodes are classified as 'Not assigned' and are not reported.

SIMD is only defined for applicants domiciled in Scotland, therefore any applicants domiciled outside of Scotland cannot be assigned to an SIMD quintile and so are not reported for this measure.

SIMD is only reported for providers in Scotland. Application and entry rates by SIMD are reported in the 2015 End of Cycle Report and the 2016 cycle January deadline application rate report.

Statistics reported in the tables

All placed applicants

The number of applicants placed for entry into higher education at the provider through one of their choices, including any choices made through Extra, or via Adjustment, Clearing or RPA.

All placed applicants per 10,000 population

The number of total UK domiciled 18 year old placed applicants for entry into higher education at the provider divided by the number of UK 18 year olds in the population, multiplied by 10,000. This gives the number of 18 year olds, for every 10,000 in the population, that were placed at the provider through one of their choices, including any choices made through Extra, or via Adjustment, Clearing or RPA. It is an alternative way of expressing the entry rate to a provider. By referencing the underlying population this statistic shows how the number of placed applicants is changing in relation to the available pool of potential applicants and so gives the chance that somebody from the group will be placed at a provider.

This statistic is only reported for 18 year olds.

Average offer rate

The offer rate that you might expect if the predicted grades and subject choice of applicants were the only factors that influenced whether an applicant was made an offer by the provider. The average offer rate is calculated by dividing applicants according to their specific combination of grades (for A levels the best three predicted grades are used, for BTECs, International Baccalaureate and Scottish Highers and Advanced Highers, predicted grades along with any grades already achieved upon applying are used) and subject choice. For each combination the number of main scheme offers is divided by the number of main scheme applications, to give an overall offer rate. This is then multiplied by the number of applications made by the group for which the average offer rate is being calculated (for example POLAR3 quintile 1), to give an average number of offers for that group. These average number of offers are then added together across all combinations of predicted grade and subject and divided by the number of main scheme applications from the group to give the average offer rate.

The average offer rate does not attempt to control for any other factors that may play a part in the decision to make an offer, such as the subject of the qualifications studied, their relevance to a course, or the grade in each subject; higher numbers of A levels being studied; the exact profile of grades predicted; personal statements; teacher references; interviews; or any other criteria (such as work experience or portfolios) that may be part of the admissions decision.

This statistic is only reported for 18 year olds.

Contribution of group to the average offer rate

The way in which the average offer rate is defined means that the pattern of application and offers of a group (for example POLAR3 quintile 1) will always contribute, in part, to the average offer rate for that group. When this contribution is large, the average offer rate will mainly reflect the patterns for the group, meaning that the value of the average offer rate will be similar to the offer rate, the percentage point difference statistic will be small, and any real difference between the offer rate and what might be expected given the predicted grades and subject choices of the applicants will be difficult to detect.

Values of the contribution of group to the average offer rate range between 0 and 1. The closer the value is to 1 the greater the contribution a group makes to its own average offer rate.

This statistic is only reported for 18 year olds.

Placed June deadline applicants

An applicant who has been placed for entry into higher education at the provider through a June deadline application.

Placed June deadline applicants per 10,000 population

The number of UK domiciled 18 year old placed June deadline applicants at the provider divided by the number of UK 18 year olds in the population, multiplied by 10,000. This gives the number of 18 year olds, for every 10,000 in the population, that were placed at the provider through one of their June deadline applications. It is an alternative way of expressing the entry rate to a provider, but for placed June deadline applicants only. By referencing the underlying population this statistic shows how the number of placed June deadline applicants is changing in relation to the available pool of potential 18 year old applicants and so gives the chance that somebody from the group will be placed at a provider through a June deadline application.

This statistic is only reported for 18 year olds.

June deadline applications

An application (or choice) to a course in higher education to the provider that is made by the June 30 deadline. Each applicant can make up to five choices this way. The number of June deadline applications does not include choices made through the following routes: Clearing, Extra, Adjustment and RPAs. Applications made to October deadline courses received after the October deadline are not included in these statistics.

June deadline applicants

The number of applicants that made at least one application to the provider by the June 30 deadline.

June deadline applicants per 10,000 population

The number of UK domiciled 18 year old June deadline applicants to the provider divided by the number of UK 18 year olds in the population, multiplied by 10,000. This gives the number of 18 year olds, for every 10,000 in the population, who applied by the June 30 deadline. It is equivalent to the application rate. By referencing the underlying population this statistic shows how the number of June deadline applicants is changing in relation to the available pool of potential 18 year old applicants and so gives the chance that somebody from the group will apply to a provider by the June 30 deadline.

This statistic is only reported for 18 year olds.

Offers

An offer is defined as a provider's decision in response to an application to offer a place to an applicant, often subject to the applicant satisfying academic and/or other criteria, via a June deadline application (i.e. does not cover choices made through the following routes: Clearing, Extra, Adjustment and RPAs).

Offer rate

The number of offers made divided by the number of June deadline applications. This gives the proportion of all June deadline applications to the provider that received an offer.

Percentage point difference between offer rate and average offer rate

The offer rate minus the average offer rate.

The percentage point difference can be compared to the expected range of statistical variation resulting from the calculation of the average offer rate using the Average Offer Rate Lookup Table. Where the value of the percentage point difference lies outside of this range, the percentage point difference may be considered to represent a real difference between the offer rate and the average offer rate.

Other definitions

Age

This analysis uses country-specific age definitions that align with the cut off points for school and college cohorts within the different administrations of the UK. For England and Wales, ages are defined on the 31 August, for Northern Ireland on the 1 July and for Scotland on the 28 February the following year. Defining ages in this way matches the assignment of children to school cohorts. For applicants outside of the UK a cohort cut off of 31 August has been used.

Provider

A higher education provider - a university or college.

UK domiciled

Declared area of permanent residence within England, Northern Ireland, Scotland and Wales. Applicants from the Channel Islands and Isle of Man are not included.