

## U40 University of the West of Scotland

**Cycle years:** 2010 - 2015

**Cycle Reference Point:** End of Cycle

**Applicant coverage:** UK domiciled

**Reporting groups:** Sex, POLAR3, SIMD, ethnic group

**Applicant statistics:** June deadline applicants, placed June deadline applicants, all placed applicants, June deadline applicants per 10,000 population, placed June deadline applicants per 10,000 population, all placed applicants per 10,000 population

**Application statistics:** June deadline applications, offers, offer rate, average offer rate, percentage point difference between offer rate and average offer rate, contribution of group to the average offer rate

**Non-disclosure controls:** To avoid the disclosure of information about any individual the following measures are taken

- Applicants, placed applicants, applications and offers are rounded to the nearest 5.
- Applicants/placed applicants per 10,000 population figures are reported as 0 if the applicant/placed applicant figures are rounded to 0.
- All statistics related to the offer rate are not reported when the number of applications for a group is less than 10. The percentage point difference between the offer rate and the average offer rate is not reported when the number of applications for a group is less than 50.
- Offer rates are reported as 0% if there are fewer than 5 offers, and 100% if the number of offers is within 5 of the number of applications. When the offer rate is reported as 0% or 100%, it is reported in italics.

### Contents:

18 year old applicants:	P.1
18 year old applications:	P.2
18 year old applicants by sex:	P.3
18 year old applications by sex:	P.4
18 year old applicants by POLAR3 quintile:	P.7
18 year old applications by POLAR3 quintile:	P.8
18 year old, Scotland domiciled applicants by SIMD quintile:	P.11
18 year old, Scotland domiciled applications by SIMD quintile:	P.12
18 year old applicants by ethnic group:	P.15
18 year old applications by ethnic group:	P.16
Applicants (all ages):	P.19
Applications (all ages):	P.20
Applicants (all ages) by sex:	P.21
Applications (all ages) by sex:	P.22
Applicants (all ages) by POLAR3 quintile:	P.23
Applications (all ages) by POLAR3 quintile:	P.24
Scotland domiciled applicants (all ages) by SIMD quintile:	P.25
Scotland domiciled applications (all ages) by SIMD quintile:	P.26
Applicants (all ages) by ethnic group:	P.27
Applications (all ages) by ethnic group:	P.28

## P.1 18 year old applicants

Statistic	2010	2011	2012	2013	2014	2015
June deadline applicants	2,995	3,500	3,665	3,695	4,080	3,915
Placed June deadline applicants	825	930	855	755	610	605
All placed applicants	1,465	1,255	1,100	970	740	870
June deadline applicants per 10,000 population	37.9	45.5	47.4	48.5	54.2	51.1
Placed June deadline applicants per 10,000	10.5	12.1	11.0	9.9	8.1	7.9
All placed applicants per 10,000 population	18.5	16.3	14.2	12.8	9.8	11.3

## P.2 18 year old applications

Statistic	2010	2011	2012	2013	2014	2015
June deadline applications	4,015	4,900	4,925	4,885	5,425	4,920
Offers	3,075	3,405	3,615	3,310	3,380	3,185
Offer rate	76.5%	69.5%	73.4%	67.8%	62.4%	64.8%

### P.3 18 year old applicants by sex

Statistic	Sex	2010	2011	2012	2013	2014	2015
June deadline applicants	Men	1,255	1,470	1,475	1,515	1,650	1,510
	Women	1,740	2,030	2,190	2,180	2,430	2,410
Placed June deadline applicants	Men	385	450	355	340	250	250
	Women	440	480	495	415	355	355
All placed applicants	Men	700	595	470	430	305	375
	Women	765	660	630	540	435	495
June deadline applicants per 10,000 population	Men	31.3	37.4	37.1	38.8	42.6	38.4
	Women	44.8	53.9	58.1	58.8	66.4	64.5
Placed June deadline applicants per 10,000 population	Men	9.6	11.4	9.0	8.7	6.5	6.4
	Women	11.4	12.8	13.2	11.3	9.8	9.5
All placed applicants per 10,000 population	Men	17.4	15.1	11.8	11.0	7.9	9.6
	Women	19.7	17.6	16.7	14.6	11.8	13.2

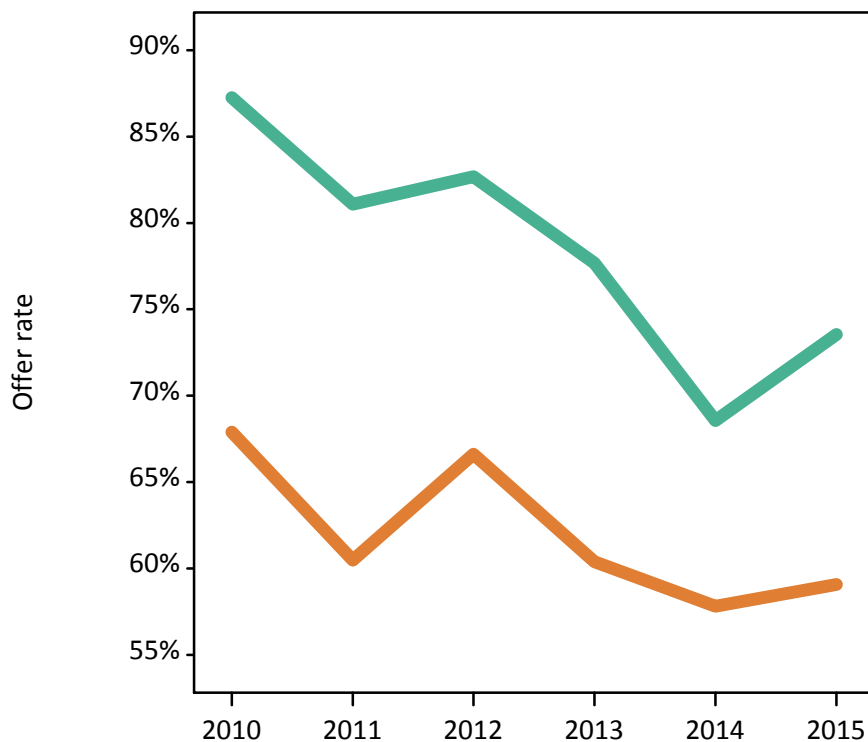
### P.4 18 year old applications by sex

Statistic	Sex	2010	2011	2012	2013	2014	2015
June deadline applications	Men	1,795	2,135	2,080	2,090	2,290	1,935
	Women	2,220	2,765	2,845	2,790	3,135	2,985
Offers	Men	1,565	1,730	1,720	1,625	1,570	1,425
	Women	1,510	1,675	1,895	1,685	1,810	1,765
Offer rate	Men	87.2%	81.1%	82.7%	77.7%	68.6%	73.5%
	Women	67.9%	60.5%	66.6%	60.4%	57.8%	59.1%
Average offer rate	Men	86.4%	80.0%	83.3%	77.5%	68.3%	73.3%
	Women	68.6%	61.3%	66.2%	60.5%	58.0%	59.2%
Percentage point difference between offer rate and average offer rate	Men	0.9	1.0	-0.6	0.2	0.3	0.2
	Women	-0.7	-0.8	0.4	-0.2	-0.2	-0.2
Contribution of group to the average offer rate	Men	0.662	0.647	0.650	0.662	0.650	0.620
	Women	0.727	0.727	0.744	0.747	0.745	0.754

### P.5 18 year old offer rate by sex

Note: The line for a group is not plotted when that group made fewer than 10 applications in any of the years from 2010-2015.

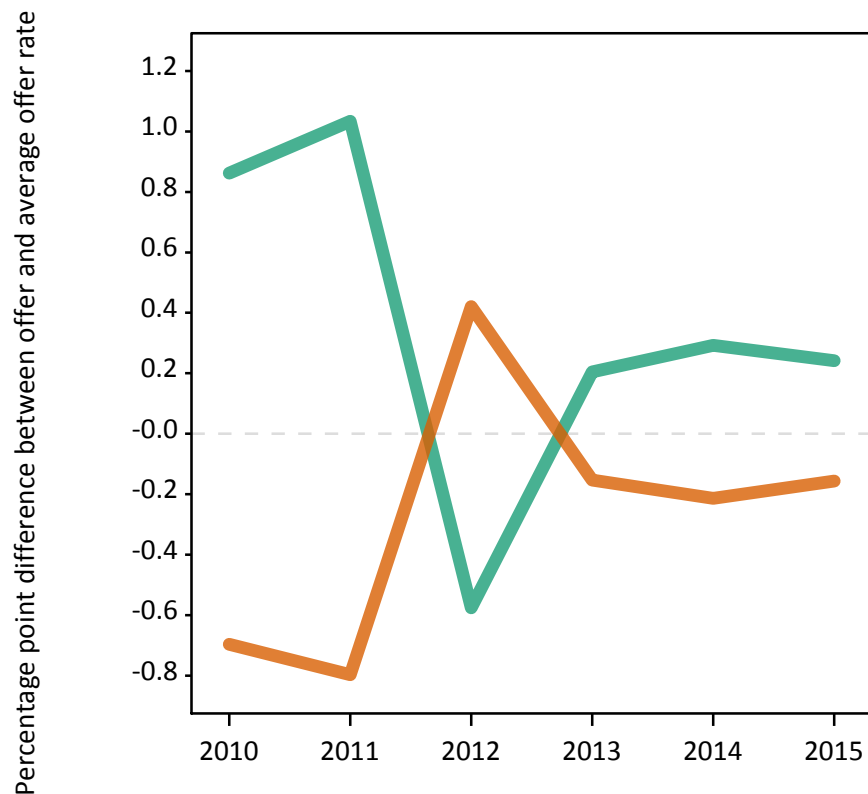
Men  
Women



### P.6 Percentage point difference between 18 year old offer rate and average offer rate by sex

Note: The line for a group is not plotted when that group made fewer than 50 applications in any of the years from 2010-2015.

Men  
Women



## P.7 18 year old applicants by POLAR3 quintile

Statistic	POLAR3 quintile	2010	2011	2012	2013	2014	2015
June deadline applicants	Quintile 1	200	225	220	240	285	300
	Quintile 2	520	560	565	575	695	620
	Quintile 3	550	690	760	720	760	765
	Quintile 4	725	870	895	885	990	955
	Quintile 5	995	1,155	1,215	1,265	1,345	1,275
Placed June deadline applicants	Quintile 1	45	50	55	50	35	35
	Quintile 2	150	160	140	100	110	80
	Quintile 3	170	200	190	170	105	125
	Quintile 4	200	230	205	170	145	150
	Quintile 5	260	295	265	265	210	215
All placed applicants	Quintile 1	80	65	75	65	45	50
	Quintile 2	235	200	180	130	125	115
	Quintile 3	295	270	230	215	135	175
	Quintile 4	345	320	260	225	175	205
	Quintile 5	500	400	350	340	255	320
June deadline applicants per 10,000 population	Quintile 1	13.6	15.5	15.6	17.2	20.5	21.5
	Quintile 2	33.9	37.2	37.7	39.0	47.5	41.7
	Quintile 3	34.5	45.0	49.3	47.3	50.4	49.7
	Quintile 4	45.5	55.5	56.3	56.5	64.2	61.1
	Quintile 5	58.8	69.8	72.4	76.6	82.4	76.0
Placed June deadline applicants per 10,000 population	Quintile 1	3.0	3.4	3.9	3.7	2.6	2.6
	Quintile 2	9.9	10.6	9.2	6.8	7.5	5.5
	Quintile 3	10.6	12.9	12.2	11.1	7.1	8.1
	Quintile 4	12.4	14.6	12.8	10.9	9.5	9.6
	Quintile 5	15.4	17.7	15.8	16.1	12.8	12.8
All placed applicants per 10,000 population	Quintile 1	5.5	4.5	5.2	4.5	3.2	3.6
	Quintile 2	15.3	13.4	11.9	8.8	8.7	7.7
	Quintile 3	18.7	17.5	14.8	14.0	9.1	11.5
	Quintile 4	21.7	20.4	16.5	14.5	11.4	13.2
	Quintile 5	29.6	24.1	20.8	20.4	15.7	19.1

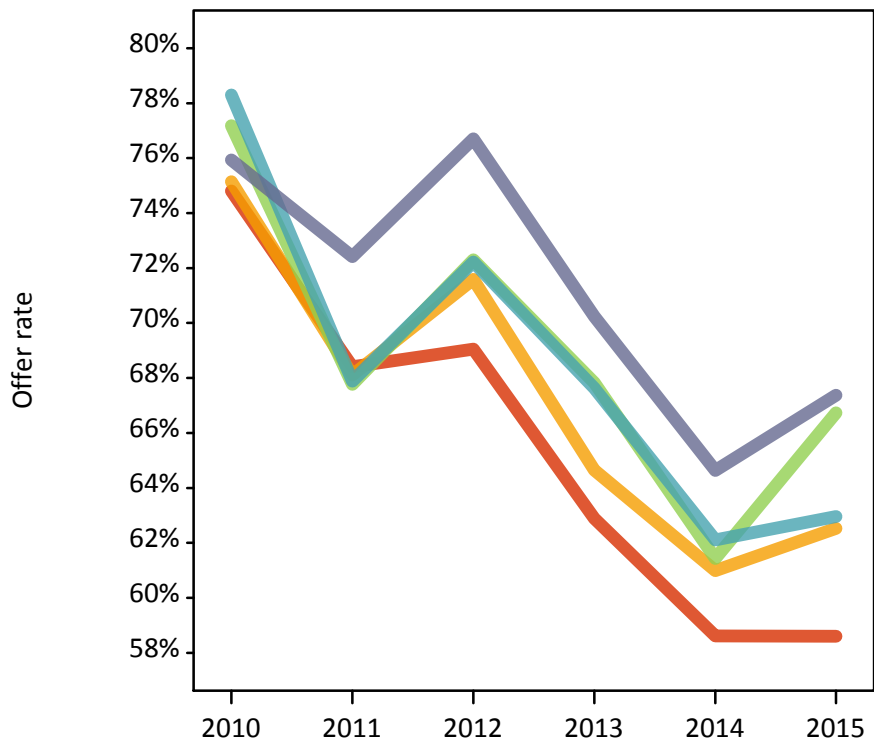
## P.8 18 year old applications by POLAR3 quintile

Statistic	POLAR3 quintile	2010	2011	2012	2013	2014	2015
June deadline applications	Quintile 1	260	305	305	325	360	370
	Quintile 2	690	760	785	760	935	775
	Quintile 3	765	995	1,035	975	1,020	970
	Quintile 4	985	1,200	1,200	1,170	1,310	1,195
	Quintile 5	1,315	1,635	1,590	1,650	1,795	1,605
Offers	Quintile 1	195	210	210	205	210	220
	Quintile 2	515	520	560	490	570	485
	Quintile 3	590	675	750	660	625	645
	Quintile 4	770	815	870	790	815	755
	Quintile 5	995	1,185	1,220	1,160	1,160	1,080
Offer rate	Quintile 1	74.8%	68.4%	69.1%	62.9%	58.6%	58.6%
	Quintile 2	75.1%	68.1%	71.6%	64.6%	61.0%	62.5%
	Quintile 3	77.2%	67.8%	72.3%	67.8%	61.4%	66.7%
	Quintile 4	78.3%	67.9%	72.2%	67.6%	62.1%	63.0%
	Quintile 5	75.9%	72.4%	76.7%	70.2%	64.6%	67.4%
Average offer rate	Quintile 1	74.0%	70.3%	69.6%	66.7%	61.6%	61.6%
	Quintile 2	73.8%	69.1%	73.4%	67.0%	60.9%	64.1%
	Quintile 3	76.9%	67.0%	72.5%	66.4%	61.8%	64.9%
	Quintile 4	78.5%	67.5%	72.7%	67.5%	62.4%	64.0%
	Quintile 5	76.8%	72.4%	75.2%	69.4%	63.7%	66.3%
Percentage point difference between offer rate and average offer rate	Quintile 1	0.8	-1.9	-0.6	-3.8	-3.0	-3.0
	Quintile 2	1.4	-1.0	-1.8	-2.4	0.1	-1.5
	Quintile 3	0.3	0.8	-0.2	1.4	-0.3	1.9
	Quintile 4	-0.2	0.4	-0.5	0.2	-0.3	-1.1
	Quintile 5	-0.9	0.0	1.5	0.9	0.9	1.1
Contribution of group to the average offer rate	Quintile 1	0.160	0.158	0.145	0.129	0.133	0.137
	Quintile 2	0.227	0.199	0.208	0.201	0.209	0.200
	Quintile 3	0.243	0.243	0.251	0.244	0.228	0.239
	Quintile 4	0.288	0.288	0.285	0.278	0.277	0.282
	Quintile 5	0.368	0.372	0.359	0.377	0.366	0.370

### P.9 18 year old offer rate by POLAR3 quintile

Note: The line for a group is not plotted when that group made fewer than 10 applications in any of the years from 2010-2015.

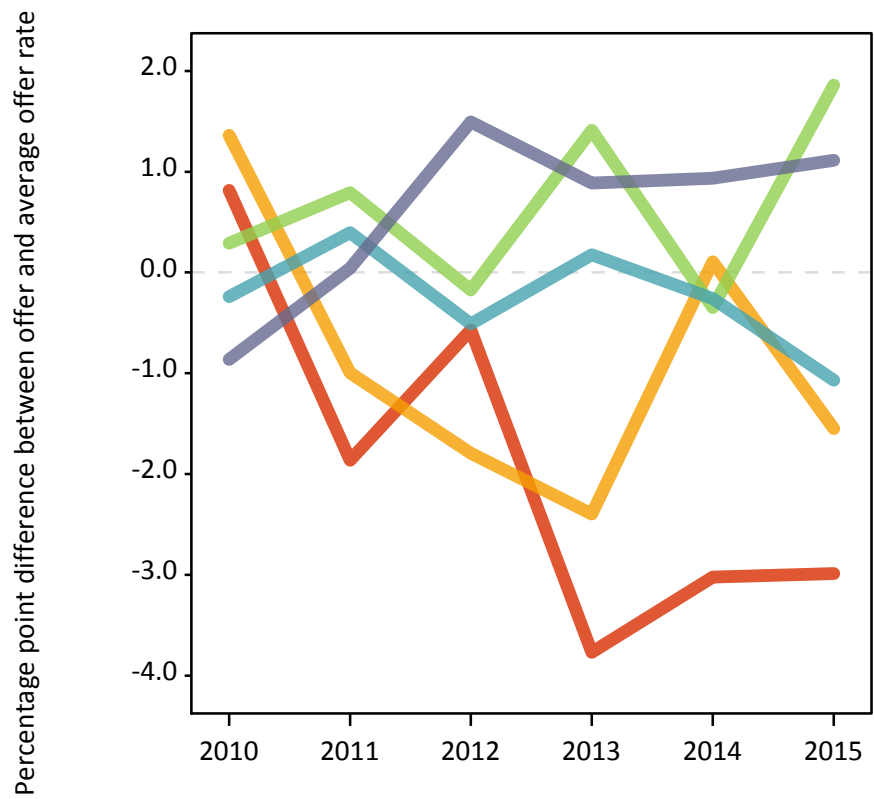
- Quintile 1
- Quintile 2
- Quintile 3
- Quintile 4
- Quintile 5



### P.10 Percentage point difference between 18 year old offer rate and average offer rate by POLAR3 quintile

Note: The line for a group is not plotted when that group made fewer than 50 applications in any of the years from 2010-2015.

- Quintile 1
- Quintile 2
- Quintile 3
- Quintile 4
- Quintile 5



## P.11 18 year old, Scotland domiciled applicants by SIMD quintile

Statistic	SIMD quintile	2010	2011	2012	2013	2014	2015
June deadline applicants	Quintile 1	540	575	655	620	755	650
	Quintile 2	585	665	620	675	750	740
	Quintile 3	545	680	720	715	750	745
	Quintile 4	565	630	715	730	780	750
	Quintile 5	620	765	750	715	815	795
Placed June deadline applicants	Quintile 1	155	175	180	140	120	90
	Quintile 2	155	195	170	155	125	110
	Quintile 3	170	190	165	145	105	110
	Quintile 4	160	165	140	145	120	140
	Quintile 5	160	190	185	160	135	145
All placed applicants	Quintile 1	265	215	225	175	140	120
	Quintile 2	275	265	205	195	145	150
	Quintile 3	295	265	215	200	120	155
	Quintile 4	280	225	190	185	150	200
	Quintile 5	305	265	235	205	175	220
June deadline applicants per 10,000 population	Quintile 1	397.3	431.5	502.9	474.4	575.2	511.2
	Quintile 2	469.1	555.3	526.8	574.6	644.5	650.2
	Quintile 3	440.4	552.3	595.9	601.1	634.2	641.6
	Quintile 4	452.6	504.7	576.1	590.5	631.1	611.8
	Quintile 5	480.1	599.6	596.2	575.3	657.0	649.4
Placed June deadline applicants per 10,000 population	Quintile 1	115.5	129.6	137.8	107.5	90.0	70.6
	Quintile 2	124.7	162.3	142.8	133.2	106.0	97.8
	Quintile 3	138.5	154.0	137.4	120.1	88.9	95.7
	Quintile 4	129.5	132.2	112.6	117.1	96.2	115.0
	Quintile 5	122.9	149.9	145.3	128.4	110.7	117.9
All placed applicants per 10,000 population	Quintile 1	195.0	159.6	173.7	132.7	107.6	94.9
	Quintile 2	222.9	219.0	174.2	165.6	124.1	133.9
	Quintile 3	237.5	214.2	177.9	166.2	103.3	134.5
	Quintile 4	223.1	181.1	152.9	150.2	119.6	164.0
	Quintile 5	235.0	208.8	185.0	162.9	141.4	178.5



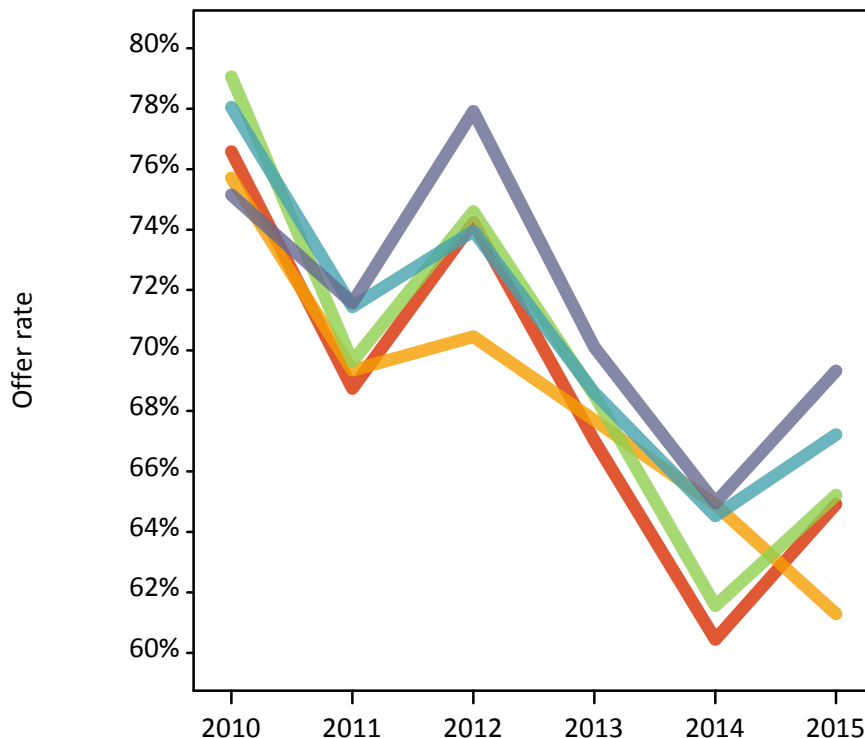
**P.12 18 year old, Scotland domiciled applications by SIMD quintile**

Statistic	SIMD quintile	2010	2011	2012	2013	2014	2015
June deadline applications	Quintile 1	745	835	950	860	1,035	840
	Quintile 2	805	970	845	940	1,040	950
	Quintile 3	745	990	990	935	980	920
	Quintile 4	760	870	930	925	1,015	960
	Quintile 5	815	1,040	1,005	975	1,115	1,005
Offers	Quintile 1	570	575	705	575	625	545
	Quintile 2	610	670	595	635	675	580
	Quintile 3	590	690	735	640	600	600
	Quintile 4	595	625	685	635	655	645
	Quintile 5	610	745	785	685	725	695
Offer rate	Quintile 1	76.6%	68.7%	74.2%	67.0%	60.4%	64.9%
	Quintile 2	75.7%	69.3%	70.5%	67.7%	64.9%	61.3%
	Quintile 3	79.1%	69.6%	74.6%	68.5%	61.6%	65.2%
	Quintile 4	78.1%	71.4%	74.0%	68.6%	64.5%	67.2%
	Quintile 5	75.2%	71.6%	77.9%	70.1%	65.0%	69.3%
Average offer rate	Quintile 1	74.9%	70.1%	74.6%	69.5%	62.8%	66.4%
	Quintile 2	76.4%	68.6%	71.8%	67.4%	63.9%	63.7%
	Quintile 3	77.7%	70.8%	74.8%	68.0%	61.5%	65.4%
	Quintile 4	76.9%	69.6%	73.9%	68.5%	64.2%	64.9%
	Quintile 5	78.3%	71.6%	76.3%	68.8%	64.0%	67.8%
Percentage point difference between offer rate and average offer rate	Quintile 1	1.7	-1.3	-0.4	-2.5	-2.3	-1.5
	Quintile 2	-0.7	0.7	-1.3	0.3	1.0	-2.5
	Quintile 3	1.4	-1.2	-0.2	0.5	0.0	-0.1
	Quintile 4	1.1	1.8	0.1	0.1	0.3	2.3
	Quintile 5	-3.2	-0.0	1.6	1.3	0.9	1.5
Contribution of group to the average offer rate	Quintile 1	0.224	0.210	0.224	0.211	0.221	0.204
	Quintile 2	0.232	0.229	0.209	0.227	0.222	0.226
	Quintile 3	0.221	0.230	0.234	0.222	0.204	0.213
	Quintile 4	0.223	0.217	0.215	0.221	0.217	0.220
	Quintile 5	0.252	0.250	0.246	0.233	0.237	0.246

**P.13 18 year old, Scotland domiciled offer rate by SIMD quintile**

Note: The line for a group is not plotted when that group made fewer than 10 applications in any of the years from 2010-2015.

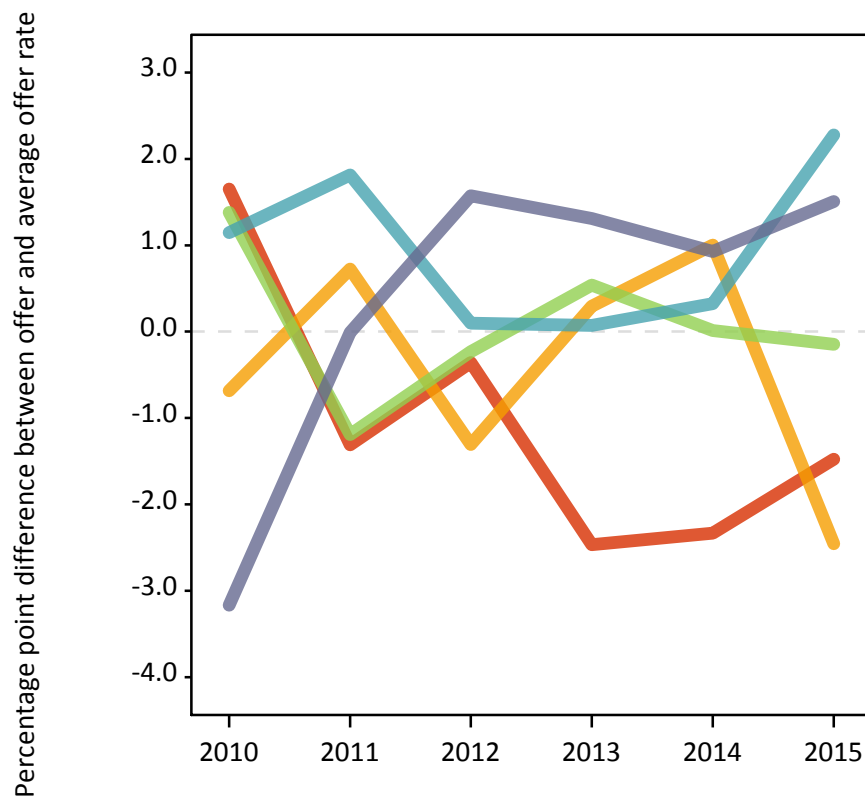
- Quintile 1
- Quintile 2
- Quintile 3
- Quintile 4
- Quintile 5



**P.14 Percentage point difference between 18 year old, Scotland domiciled offer rate and average offer rate by SIMD quintile**

Note: The line for a group is not plotted when that group made fewer than 50 applications in any of the years from 2010-2015.

- Quintile 1
- Quintile 2
- Quintile 3
- Quintile 4
- Quintile 5



## P.15 18 year old applicants by ethnic group

Statistic	Ethnic group	2010	2011	2012	2013	2014	2015
June deadline applicants	Asian	100	115	165	160	160	160
	Black	15	20	25	30	40	30
	Mixed	30	35	30	35	45	55
	White	2,840	3,325	3,425	3,450	3,820	3,645
	Other	0	0	10	15	10	15
Placed June deadline applicants	Asian	30	35	35	25	15	20
	Black	5	5	5	5	0	5
	Mixed	5	5	5	10	5	5
	White	785	880	800	720	585	570
	Other	0	0	5	5	0	5
All placed applicants	Asian	85	60	60	40	25	40
	Black	10	10	10	5	5	5
	Mixed	10	10	5	10	5	5
	White	1,300	1,170	1,020	910	705	805
	Other	0	0	5	5	0	5
June deadline applicants per 10,000 population	Asian	16.2	17.9	25.5	24.1	23.9	22.9
	Black	6.5	8.0	8.5	9.8	12.5	8.8
	Mixed	12.5	14.5	11.9	12.6	15.3	17.8
	White	42.3	51.3	53.0	54.8	61.9	58.5
	Other	0.0	0.0	12.4	16.5	9.7	16.6
Placed June deadline applicants per 10,000 population	Asian	4.9	5.7	5.4	3.6	2.5	3.0
	Black	1.5	2.6	2.5	1.3	0.0	0.9
	Mixed	1.7	2.5	2.3	3.0	1.4	1.6
	White	11.7	13.6	12.4	11.4	9.5	9.1
	Other	0.0	0.0	3.4	3.3	0.0	5.2
All placed applicants per 10,000 population	Asian	13.6	9.5	9.1	6.4	3.7	5.4
	Black	4.6	4.0	3.6	1.7	1.3	1.6
	Mixed	3.9	4.1	2.7	3.3	1.4	2.3
	White	19.4	18.1	15.8	14.5	11.4	12.9
	Other	0.0	0.0	3.4	3.3	0.0	7.3

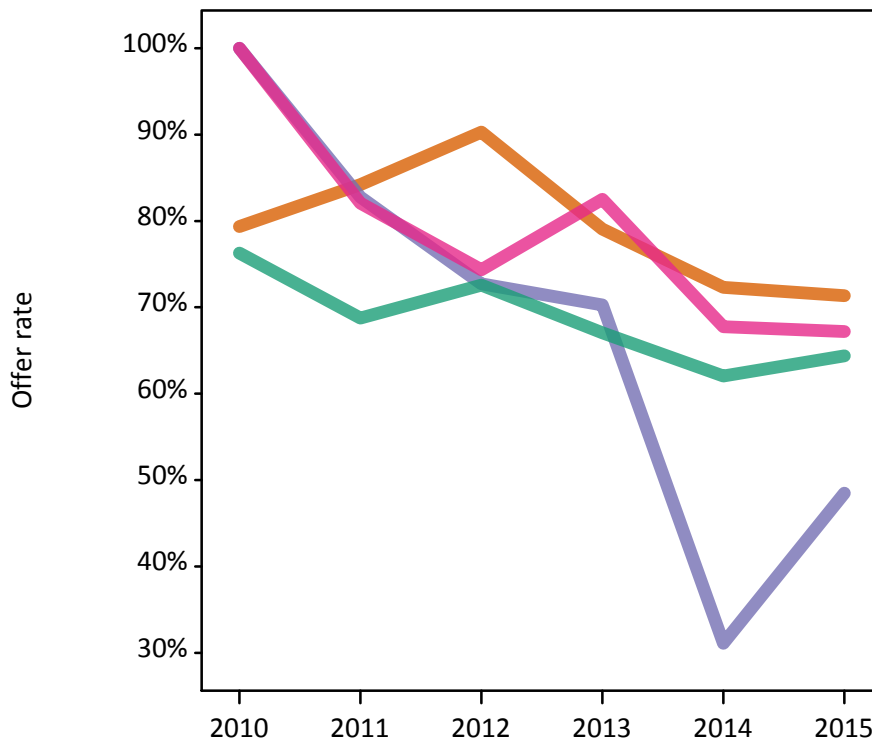
## P.16 18 year old applications by ethnic group

Statistic	Ethnic group	2010	2011	2012	2013	2014	2015
June deadline applications	Asian	125	150	215	210	225	205
	Black	20	30	35	35	45	35
	Mixed	35	40	40	40	60	60
	White	3,820	4,670	4,610	4,570	5,070	4,585
	Other	0	0	20	15	10	20
Offers	Asian	100	130	195	165	160	145
	Black	15	25	25	25	15	15
	Mixed	30	30	30	35	40	40
	White	2,915	3,215	3,345	3,065	3,145	2,950
	Other	0	0	15	15	5	15
Offer rate	Asian	79.4%	84.2%	90.3%	79.0%	72.3%	71.4%
	Black	100.0%	82.8%	72.7%	70.3%	31.1%	48.5%
	Mixed	100.0%	82.1%	74.4%	82.5%	67.7%	67.2%
	White	76.3%	68.8%	72.6%	67.0%	62.1%	64.4%
	Other	N/A	N/A	100.0%	100.0%	100.0%	100.0%
Average offer rate	Asian	87.9%	83.4%	87.0%	79.4%	76.4%	74.3%
	Black	79.1%	79.1%	81.1%	72.9%	59.1%	62.9%
	Mixed	87.7%	75.1%	79.2%	79.0%	67.9%	69.0%
	White	76.0%	68.9%	72.6%	67.0%	61.6%	64.2%
	Other	N/A	N/A	75.5%	90.5%	77.8%	77.0%
Percentage point difference between offer rate and average offer rate	Asian	-8.6	0.8	3.3	-0.4	-4.1	-2.9
	Black	N/A	N/A	N/A	N/A	N/A	N/A
	Mixed	N/A	N/A	N/A	N/A	-0.1	-1.8
	White	0.3	-0.1	-0.1	-0.0	0.4	0.2
	Other	N/A	N/A	N/A	N/A	N/A	N/A
Contribution of group to the average offer rate	Asian	0.112	0.112	0.139	0.108	0.112	0.133
	Black	0.040	0.150	0.138	0.119	0.101	0.145
	Mixed	0.136	0.076	0.090	0.133	0.096	0.098
	White	0.956	0.958	0.944	0.943	0.940	0.940
	Other	N/A	N/A	0.105	0.061	0.068	0.065

### P.17 18 year old offer rate by ethnic group

Note: The line for a group is not plotted when that group made fewer than 10 applications in any of the years from 2010-2015.

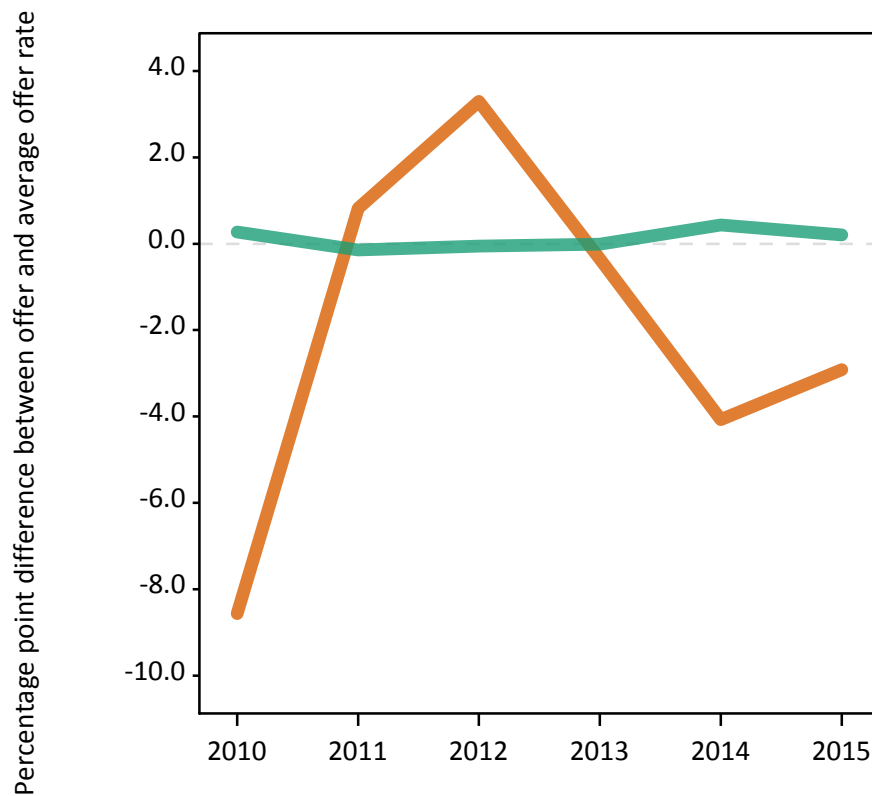
- Asian
- Black
- Mixed
- White
- Other



### P.18 Percentage point difference between 18 year old offer rate and average offer rate by ethnic group

Note: The line for a group is not plotted when that group made fewer than 50 applications in any of the years from 2010-2015.

- Asian
- Black
- Mixed
- White
- Other



### P.19 Applicants (all ages)

Statistic	2010	2011	2012	2013	2014	2015
June deadline applicants	8,210	9,850	10,400	10,925	11,700	13,315
Placed June deadline applicants	2,915	3,320	3,170	3,095	2,925	3,235
All placed applicants	4,505	4,105	3,850	3,730	3,305	3,985

### P.20 Applications (all ages)

Statistic	2010	2011	2012	2013	2014	2015
June deadline applications	11,070	13,705	14,230	14,805	16,320	17,890
Offers	7,315	8,170	8,830	8,640	8,880	9,080
Offer rate	66.1%	59.6%	62.0%	58.4%	54.4%	50.8%

## P.21 Applicants (all ages) by sex

Statistic	Sex	2010	2011	2012	2013	2014	2015
June deadline applicants	Men	3,150	3,860	4,015	4,265	4,400	4,595
	Women	5,060	5,990	6,385	6,660	7,300	8,720
Placed June deadline applicants	Men	1,215	1,365	1,285	1,280	1,125	1,170
	Women	1,700	1,955	1,885	1,815	1,795	2,065
All placed applicants	Men	2,005	1,715	1,575	1,530	1,280	1,495
	Women	2,500	2,390	2,275	2,195	2,030	2,490

## P.22 Applications (all ages) by sex

Statistic	Sex	2010	2011	2012	2013	2014	2015
June deadline applications	Men	4,375	5,400	5,650	5,940	6,310	6,120
	Women	6,690	8,305	8,580	8,865	10,010	11,770
Offers	Men	3,410	3,775	4,035	4,040	3,925	3,770
	Women	3,900	4,395	4,795	4,600	4,955	5,310
Offer rate	Men	78.0%	69.9%	71.4%	68.0%	62.2%	61.6%
	Women	58.3%	52.9%	55.9%	51.9%	49.5%	45.1%

### P.23 Applicants (all ages) by POLAR3 quintile

Statistic	POLAR3 quintile	2010	2011	2012	2013	2014	2015
June deadline applicants	Quintile 1	645	810	825	875	1,010	1,160
	Quintile 2	1,580	1,755	1,905	1,945	2,185	2,385
	Quintile 3	1,605	2,010	2,120	2,190	2,345	2,600
	Quintile 4	1,895	2,260	2,320	2,510	2,630	3,025
	Quintile 5	2,465	3,000	3,210	3,375	3,515	4,125
Placed June deadline applicants	Quintile 1	210	255	255	235	250	270
	Quintile 2	580	615	595	570	605	615
	Quintile 3	600	695	645	645	585	685
	Quintile 4	660	745	705	700	640	700
	Quintile 5	860	1,005	965	940	840	970
All placed applicants	Quintile 1	330	310	320	270	280	335
	Quintile 2	825	730	725	650	665	720
	Quintile 3	910	875	780	790	665	835
	Quintile 4	1,030	940	845	850	725	870
	Quintile 5	1,400	1,245	1,175	1,155	970	1,220

### P.24 Applications (all ages) by POLAR3 quintile

Statistic	POLAR3 quintile	2010	2011	2012	2013	2014	2015
June deadline applications	Quintile 1	850	1,100	1,145	1,180	1,355	1,575
	Quintile 2	2,105	2,405	2,680	2,685	3,125	3,315
	Quintile 3	2,225	2,875	2,895	3,005	3,315	3,500
	Quintile 4	2,570	3,125	3,185	3,390	3,655	3,980
	Quintile 5	3,300	4,175	4,295	4,515	4,850	5,485
Offers	Quintile 1	550	635	665	655	705	755
	Quintile 2	1,365	1,390	1,590	1,505	1,635	1,655
	Quintile 3	1,435	1,655	1,820	1,750	1,785	1,815
	Quintile 4	1,710	1,850	1,940	1,985	2,015	2,015
	Quintile 5	2,230	2,630	2,800	2,730	2,735	2,825
Offer rate	Quintile 1	65.0%	57.8%	57.9%	55.2%	51.8%	47.9%
	Quintile 2	64.9%	57.8%	59.4%	56.0%	52.4%	49.9%
	Quintile 3	64.6%	57.7%	62.8%	58.3%	53.8%	51.8%
	Quintile 4	66.6%	59.2%	60.9%	58.5%	55.1%	50.6%
	Quintile 5	67.6%	63.0%	65.2%	60.4%	56.3%	51.5%



### P.25 Scotland domiciled applicants (all ages) by SIMD quintile

Statistic	SIMD quintile	2010	2011	2012	2013	2014	2015
June deadline applicants	Quintile 1	2,055	2,375	2,590	2,550	3,000	3,175
	Quintile 2	1,700	2,015	2,040	2,230	2,410	2,685
	Quintile 3	1,465	1,850	1,975	2,095	2,130	2,460
	Quintile 4	1,325	1,495	1,640	1,780	1,845	2,160
	Quintile 5	1,310	1,640	1,675	1,700	1,760	2,190
Placed June deadline applicants	Quintile 1	795	865	875	765	850	890
	Quintile 2	605	730	695	680	650	675
	Quintile 3	550	650	580	620	550	615
	Quintile 4	465	480	460	505	400	510
	Quintile 5	450	550	505	485	430	490
All placed applicants	Quintile 1	1,150	1,025	1,055	900	940	1,065
	Quintile 2	930	900	815	815	720	810
	Quintile 3	855	815	720	755	615	745
	Quintile 4	730	595	575	620	470	655
	Quintile 5	740	695	610	590	510	630

### P.26 Scotland domiciled applications (all ages) by SIMD quintile

Statistic	SIMD quintile	2010	2011	2012	2013	2014	2015
June deadline applications	Quintile 1	2,830	3,370	3,680	3,565	4,320	4,500
	Quintile 2	2,310	2,845	2,850	3,115	3,445	3,625
	Quintile 3	2,000	2,630	2,720	2,805	2,945	3,300
	Quintile 4	1,785	2,085	2,190	2,380	2,545	2,875
	Quintile 5	1,765	2,250	2,270	2,325	2,455	2,890
Offers	Quintile 1	1,825	1,940	2,235	2,020	2,285	2,345
	Quintile 2	1,505	1,685	1,745	1,830	1,865	1,810
	Quintile 3	1,330	1,555	1,670	1,680	1,660	1,675
	Quintile 4	1,230	1,310	1,425	1,415	1,400	1,505
	Quintile 5	1,210	1,475	1,540	1,420	1,440	1,490
Offer rate	Quintile 1	64.5%	57.6%	60.8%	56.7%	52.9%	52.1%
	Quintile 2	65.1%	59.3%	61.2%	58.8%	54.1%	50.0%
	Quintile 3	66.6%	59.2%	61.3%	59.9%	56.5%	50.7%
	Quintile 4	68.9%	62.9%	65.1%	59.5%	55.0%	52.4%
	Quintile 5	68.7%	65.6%	67.9%	61.0%	58.6%	51.6%

## P.27 Applicants (all ages) by ethnic group

Statistic	Ethnic group	2010	2011	2012	2013	2014	2015
June deadline applicants	Asian	320	425	470	520	505	585
	Black	240	270	290	255	305	340
	Mixed	85	100	110	110	130	160
	White	7,520	9,010	9,470	9,960	10,690	12,095
	Other	10	15	30	45	45	70
Placed June deadline applicants	Asian	105	140	140	135	105	155
	Black	50	50	65	55	55	65
	Mixed	30	30	30	30	30	30
	White	2,715	3,085	2,920	2,850	2,720	2,950
	Other	5	5	10	15	10	25
All placed applicants	Asian	210	200	195	200	130	210
	Black	85	70	85	70	65	85
	Mixed	40	35	35	35	30	40
	White	3,660	3,755	3,515	3,390	3,015	3,605
	Other	15	5	10	15	10	30

## P.28 Applications (all ages) by ethnic group

Statistic	Ethnic group	2010	2011	2012	2013	2014	2015
June deadline applications	Asian	425	585	645	695	690	785
	Black	310	350	365	325	385	435
	Mixed	115	120	145	140	175	195
	White	10,170	12,590	13,000	13,545	14,975	16,305
	Other	10	20	45	55	55	95
Offers	Asian	315	440	495	515	450	485
	Black	130	135	165	165	140	150
	Mixed	90	80	95	90	105	105
	White	6,740	7,475	8,015	7,815	8,135	8,235
	Other	10	15	30	35	30	55
Offer rate	Asian	73.7%	74.7%	77.1%	74.0%	64.8%	62.0%
	Black	42.5%	38.0%	45.5%	50.5%	37.0%	34.8%
	Mixed	77.2%	69.5%	65.0%	65.0%	58.8%	54.6%
	White	66.3%	59.4%	61.7%	57.7%	54.3%	50.5%
	Other	100.0%	100.0%	63.6%	60.7%	50.9%	60.2%

## Technical Notes and Definitions

### UCAS undergraduate scheme

#### Adjustment

Adjustment allows applicants who have met and exceeded the terms of their conditional firm offer to seek and find a place at another provider whilst keeping their place at their original firm choice provider.

#### Clearing

Clearing is a route for applicants that are not placed and holding no offers to find a place on courses with vacancies.

#### Cycle year

The UCAS application cycle which runs from September to October the following year. For example the 2015 cycle runs from September 2014 through to October 2015.

#### End of cycle

The point in the cycle to which the numbers in this report refer, and the point at which the cycle is closed such that no more applications or offers can be made, and no more applicants can be placed. Numbers reported at the end of cycle exclude information on a small number of applicants who cancelled during the cycle.

#### Extra

Applicants who are unsuccessful in obtaining an offer or decline all offers may be eligible to apply through Extra, where they can apply to one further course at a time. Extra operates from 25 February until early July. It provides applicants who are eligible the possibility of obtaining an offer before exam results are published and Clearing starts.

#### June 30 deadline

The deadline for main scheme applications. Applicants who apply after this date will go directly into Clearing.

#### Record of Prior Acceptance (RPA)

RPA is an acceptance route used when a provider informs UCAS of applicants it has accepted outside of the normal application process (e.g. individuals who have applied directly to the provider).

### Reporting groups

#### Ethnic group

High level grouping of ethnic origin as declared by the applicant: 'White', 'Black', 'Asian', 'Mixed', 'Other', 'Unknown'. Applicants who declare themselves as 'Unknown' ethnic origin are not reported in these tables, but are included in the associated csv data file.

#### POLAR3 quintile

Developed by HEFCE, POLAR3 classifies small areas across the UK into five groups according to their level of young participation in Higher Education. Each of these groups represents around 20 per cent of young people and is ranked from Quintile 1 (areas with the lowest young participation rates, considered as the most disadvantaged) to Quintile 5 (highest young participation rates, considered most advantaged). POLAR3 is based on the participation rates of young people between 2005 and 2009 who entered Higher Education between 2005-06 and 2010-11, therefore is most suitable for applicants aged 19 and under. These groups are assigned using the postcode declared by the applicant at the time of their application. If a UK postcode is invalid, considered unsafe for measurement or there is no link to Census geography possible then the applicant is not assigned to a quintile. Applicants with no POLAR3 quintile are not reported.

#### Sex

Sex as declared by the applicant.

### **SIMD quintile**

Scottish index of multiple deprivation (SIMD) for 2012 identifies small area concentrations of multiple deprivation across all of Scotland, providing a relative measure of deprivation amongst 6505 small areas (data zones) based on 7 socio-economic domains. These small areas are classified into five groups ranked from Quintile 1 (considered the most deprived) to Quintile 5 (considered least deprived), with equal populations in each quintile. Quintiles are assigned using the postcode declared by the applicant, applicants declaring invalid postcodes are classified as 'Not assigned' and are not reported.

SIMD is only defined for applicants domiciled in Scotland, therefore any applicants domiciled outside of Scotland cannot be assigned to an SIMD quintile and so are not reported for this measure.

SIMD is only reported for providers in Scotland. Application and entry rates by SIMD are reported in the 2015 End of Cycle Report and the 2016 cycle January deadline application rate report.

### **Statistics reported in the tables**

#### **All placed applicants**

The number of applicants placed for entry into higher education at the provider through one of their choices, including any choices made through Extra, or via Adjustment, Clearing or RPA.

#### **All placed applicants per 10,000 population**

The number of total UK domiciled 18 year old placed applicants for entry into higher education at the provider divided by the number of UK 18 year olds in the population, multiplied by 10,000. This gives the number of 18 year olds, for every 10,000 in the population, that were placed at the provider through one of their choices, including any choices made through Extra, or via Adjustment, Clearing or RPA. It is an alternative way of expressing the entry rate to a provider. By referencing the underlying population this statistic shows how the number of placed applicants is changing in relation to the available pool of potential applicants and so gives the chance that somebody from the group will be placed at a provider.

This statistic is only reported for 18 year olds.

#### **Average offer rate**

The offer rate that you might expect if the predicted grades and subject choice of applicants were the only factors that influenced whether an applicant was made an offer by the provider. The average offer rate is calculated by dividing applicants according to their specific combination of grades (for A levels the best three predicted grades are used, for BTECs, International Baccalaureate and Scottish Highers and Advanced Highers, predicted grades along with any grades already achieved upon applying are used) and subject choice. For each combination the number of main scheme offers is divided by the number of main scheme applications, to give an overall offer rate. This is then multiplied by the number of applications made by the group for which the average offer rate is being calculated (for example POLAR3 quintile 1), to give an average number of offers for that group. These average number of offers are then added together across all combinations of predicted grade and subject and divided by the number of main scheme applications from the group to give the average offer rate.

The average offer rate does not attempt to control for any other factors that may play a part in the decision to make an offer, such as the subject of the qualifications studied, their relevance to a course, or the grade in each subject; higher numbers of A levels being studied; the exact profile of grades predicted; personal statements; teacher references; interviews; or any other criteria (such as work experience or portfolios) that may be part of the admissions decision.

This statistic is only reported for 18 year olds.

### Contribution of group to the average offer rate

The way in which the average offer rate is defined means that the pattern of application and offers of a group (for example POLAR3 quintile 1) will always contribute, in part, to the average offer rate for that group. When this contribution is large, the average offer rate will mainly reflect the patterns for the group, meaning that the value of the average offer rate will be similar to the offer rate, the percentage point difference statistic will be small, and any real difference between the offer rate and what might be expected given the predicted grades and subject choices of the applicants will be difficult to detect.

Values of the contribution of group to the average offer rate range between 0 and 1. The closer the value is to 1 the greater the contribution a group makes to its own average offer rate.

This statistic is only reported for 18 year olds.

### Placed June deadline applicants

An applicant who has been placed for entry into higher education at the provider through a June deadline application.

### Placed June deadline applicants per 10,000 population

The number of UK domiciled 18 year old placed June deadline applicants at the provider divided by the number of UK 18 year olds in the population, multiplied by 10,000. This gives the number of 18 year olds, for every 10,000 in the population, that were placed at the provider through one of their June deadline applications. It is an alternative way of expressing the entry rate to a provider, but for placed June deadline applicants only. By referencing the underlying population this statistic shows how the number of placed June deadline applicants is changing in relation to the available pool of potential 18 year old applicants and so gives the chance that somebody from the group will be placed at a provider through a June deadline application.

This statistic is only reported for 18 year olds.

### June deadline applications

An application (or choice) to a course in higher education to the provider that is made by the June 30 deadline. Each applicant can make up to five choices this way. The number of June deadline applications does not include choices made through the following routes: Clearing, Extra, Adjustment and RPAs. Applications made to October deadline courses received after the October deadline are not included in these statistics.

### June deadline applicants

The number of applicants that made at least one application to the provider by the June 30 deadline.

### June deadline applicants per 10,000 population

The number of UK domiciled 18 year old June deadline applicants to the provider divided by the number of UK 18 year olds in the population, multiplied by 10,000. This gives the number of 18 year olds, for every 10,000 in the population, who applied by the June 30 deadline. It is equivalent to the application rate. By referencing the underlying population this statistic shows how the number of June deadline applicants is changing in relation to the available pool of potential 18 year old applicants and so gives the chance that somebody from the group will apply to a provider by the June 30 deadline.

This statistic is only reported for 18 year olds.

### Offers

An offer is defined as a provider's decision in response to an application to offer a place to an applicant, often subject to the applicant satisfying academic and/or other criteria, via a June deadline application (i.e. does not cover choices made through the following routes: Clearing, Extra, Adjustment and RPAs).

### Offer rate

The number of offers made divided by the number of June deadline applications. This gives the proportion of all June deadline applications to the provider that received an offer.

### Percentage point difference between offer rate and average offer rate

The offer rate minus the average offer rate.

The percentage point difference can be compared to the expected range of statistical variation resulting from the calculation of the average offer rate using the Average Offer Rate Lookup Table. Where the value of the percentage point difference lies outside of this range, the percentage point difference may be considered to represent a real difference between the offer rate and the average offer rate.

### Other definitions

#### Age

This analysis uses country-specific age definitions that align with the cut off points for school and college cohorts within the different administrations of the UK. For England and Wales, ages are defined on the 31 August, for Northern Ireland on the 1 July and for Scotland on the 28 February the following year. Defining ages in this way matches the assignment of children to school cohorts. For applicants outside of the UK a cohort cut off of 31 August has been used.

#### Provider

A higher education provider - a university or college.

#### UK domiciled

Declared area of permanent residence within England, Northern Ireland, Scotland and Wales. Applicants from the Channel Islands and Isle of Man are not included.