

## W50 University of Westminster

**Cycle years:** 2010 - 2015

**Cycle Reference Point:** End of Cycle

**Applicant coverage:** UK domiciled

**Reporting groups:** Sex, POLAR3, ethnic group

**Applicant statistics:** June deadline applicants, placed June deadline applicants, all placed applicants, June deadline applicants per 10,000 population, placed June deadline applicants per 10,000 population, all placed applicants per 10,000 population

**Application statistics:** June deadline applications, offers, offer rate, average offer rate, percentage point difference between offer rate and average offer rate, contribution of group to the average offer rate

**Non-disclosure controls:** To avoid the disclosure of information about any individual the following measures are taken

- Applicants, placed applicants, applications and offers are rounded to the nearest 5.
- Applicants/placed applicants per 10,000 population figures are reported as 0 if the applicant/placed applicant figures are rounded to 0.
- All statistics related to the offer rate are not reported when the number of applications for a group is less than 10. The percentage point difference between the offer rate and the average offer rate is not reported when the number of applications for a group is less than 50.
- Offer rates are reported as 0% if there are fewer than 5 offers, and 100% if the number of offers is within 5 of the number of applications. When the offer rate is reported as 0% or 100%, it is reported in italics.

### Contents:

18 year old applicants:	P.1
18 year old applications:	P.2
18 year old applicants by sex:	P.3
18 year old applications by sex:	P.4
18 year old applicants by POLAR3 quintile:	P.7
18 year old applications by POLAR3 quintile:	P.8
18 year old applicants by ethnic group:	P.11
18 year old applications by ethnic group:	P.12
Applicants (all ages):	P.15
Applications (all ages):	P.16
Applicants (all ages) by sex:	P.17
Applications (all ages) by sex:	P.18
Applicants (all ages) by POLAR3 quintile:	P.19
Applications (all ages) by POLAR3 quintile:	P.20
Applicants (all ages) by ethnic group:	P.21
Applications (all ages) by ethnic group:	P.22

## P.1 18 year old applicants

Statistic	2010	2011	2012	2013	2014	2015
June deadline applicants	6,620	7,795	8,115	8,975	9,980	9,290
Placed June deadline applicants	995	1,205	1,175	1,420	1,500	1,375
All placed applicants	1,485	1,595	1,595	1,770	1,865	1,680
June deadline applicants per 10,000 population	83.8	101.2	104.9	117.9	132.5	121.3
Placed June deadline applicants per 10,000	12.6	15.6	15.2	18.7	19.9	17.9
All placed applicants per 10,000 population	18.8	20.7	20.6	23.3	24.7	22.0

## P.2 18 year old applications

Statistic	2010	2011	2012	2013	2014	2015
June deadline applications	6,885	8,125	8,440	9,300	10,345	9,540
Offers	4,725	5,850	6,365	7,275	8,030	7,625
Offer rate	68.6%	72.0%	75.4%	78.2%	77.6%	79.9%

### P.3 18 year old applicants by sex

Statistic	Sex	2010	2011	2012	2013	2014	2015
June deadline applicants	Men	2,730	3,225	3,390	3,670	3,950	3,620
	Women	3,890	4,570	4,730	5,300	6,030	5,670
Placed June deadline applicants	Men	405	470	480	550	585	555
	Women	595	735	700	875	915	820
All placed applicants	Men	590	645	630	690	690	670
	Women	895	950	965	1,080	1,170	1,015
June deadline applicants per 10,000 population	Men	67.9	82.0	85.5	94.0	102.1	92.3
	Women	100.3	121.3	125.4	143.1	164.8	151.7
Placed June deadline applicants per 10,000 population	Men	10.1	11.9	12.1	14.1	15.1	14.1
	Women	15.3	19.5	18.5	23.6	25.0	22.0
All placed applicants per 10,000 population	Men	14.7	16.4	15.9	17.7	17.9	17.0
	Women	23.0	25.2	25.5	29.1	32.0	27.1

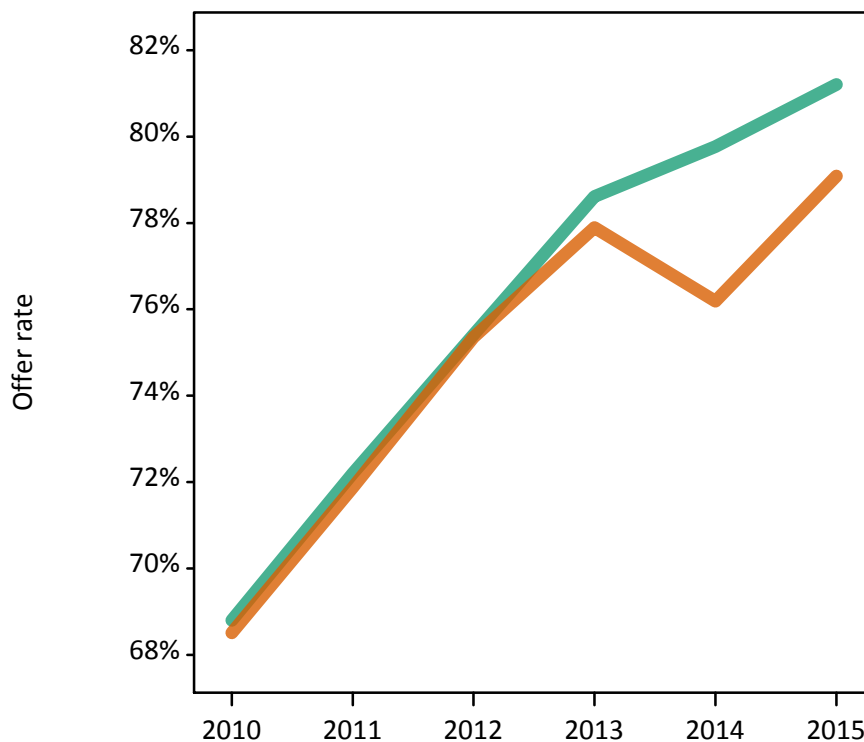
### P.4 18 year old applications by sex

Statistic	Sex	2010	2011	2012	2013	2014	2015
June deadline applications	Men	2,860	3,380	3,555	3,825	4,120	3,745
	Women	4,025	4,745	4,890	5,475	6,225	5,795
Offers	Men	1,970	2,440	2,680	3,005	3,290	3,040
	Women	2,755	3,410	3,685	4,265	4,740	4,585
Offer rate	Men	68.8%	72.2%	75.4%	78.6%	79.8%	81.2%
	Women	68.5%	71.9%	75.3%	77.9%	76.2%	79.1%
Average offer rate	Men	68.4%	71.9%	74.9%	77.9%	79.3%	81.1%
	Women	68.8%	72.1%	75.7%	78.4%	76.5%	79.2%
Percentage point difference between offer rate and average offer rate	Men	0.4	0.3	0.5	0.8	0.4	0.1
	Women	-0.3	-0.2	-0.4	-0.5	-0.3	-0.1
Contribution of group to the average offer rate	Men	0.574	0.580	0.569	0.569	0.561	0.572
	Women	0.697	0.701	0.687	0.699	0.709	0.723

### P.5 18 year old offer rate by sex

Note: The line for a group is not plotted when that group made fewer than 10 applications in any of the years from 2010-2015.

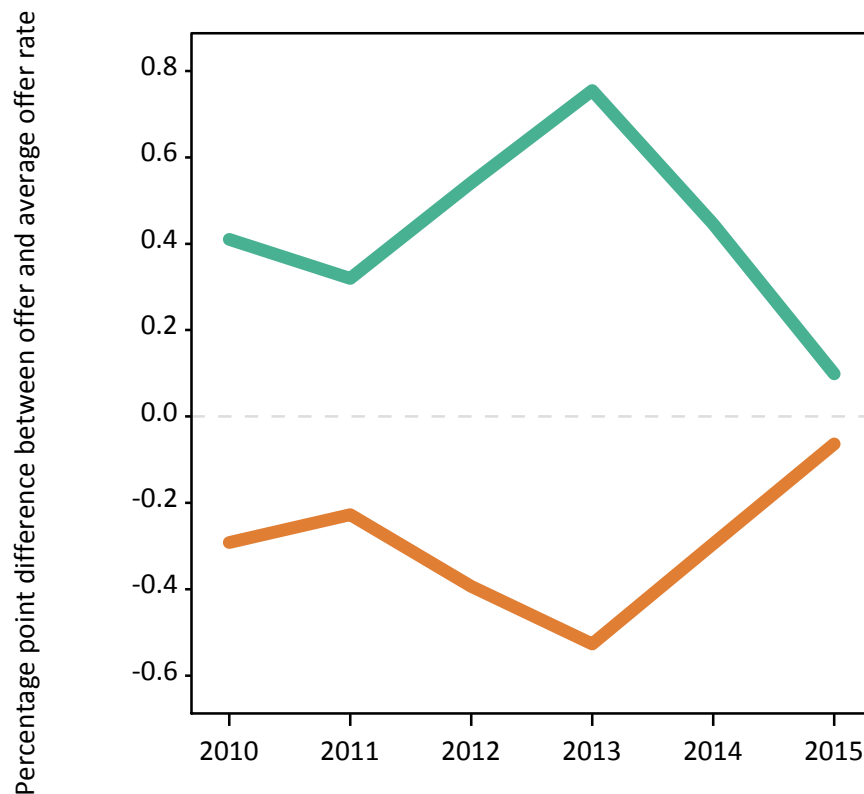
Men  
Women



### P.6 Percentage point difference between 18 year old offer rate and average offer rate by sex

Note: The line for a group is not plotted when that group made fewer than 50 applications in any of the years from 2010-2015.

Men  
Women



## P.7 18 year old applicants by POLAR3 quintile

Statistic	POLAR3 quintile	2010	2011	2012	2013	2014	2015
June deadline applicants	Quintile 1	400	525	535	615	755	680
	Quintile 2	755	950	945	1,120	1,280	1,190
	Quintile 3	1,645	1,905	2,060	2,215	2,500	2,265
	Quintile 4	1,780	2,145	2,185	2,475	2,705	2,575
	Quintile 5	2,025	2,250	2,375	2,525	2,720	2,550
Placed June deadline applicants	Quintile 1	45	80	70	75	105	80
	Quintile 2	115	130	130	190	170	175
	Quintile 3	250	285	330	380	400	345
	Quintile 4	270	365	300	410	440	415
	Quintile 5	310	345	350	365	385	350
All placed applicants	Quintile 1	60	100	80	90	120	90
	Quintile 2	145	160	170	225	205	195
	Quintile 3	375	380	445	480	490	420
	Quintile 4	390	460	420	505	540	500
	Quintile 5	510	495	470	470	505	465
June deadline applicants per 10,000 population	Quintile 1	27.0	36.5	37.7	44.2	54.1	48.5
	Quintile 2	49.1	63.1	62.9	75.9	87.6	80.1
	Quintile 3	103.3	123.8	133.3	145.4	166.1	147.5
	Quintile 4	111.7	137.1	137.6	158.2	175.5	164.4
	Quintile 5	119.5	135.8	141.2	152.6	166.7	152.3
Placed June deadline applicants per 10,000 population	Quintile 1	3.0	5.4	4.8	5.4	7.5	5.9
	Quintile 2	7.4	8.6	8.5	13.0	11.6	11.8
	Quintile 3	15.8	18.7	21.4	24.9	26.5	22.5
	Quintile 4	17.0	23.2	18.8	26.1	28.4	26.6
	Quintile 5	18.4	20.9	20.8	22.2	23.5	20.8
All placed applicants per 10,000 population	Quintile 1	4.1	6.8	5.7	6.4	8.8	6.5
	Quintile 2	9.5	10.6	11.3	15.3	13.9	13.2
	Quintile 3	23.5	24.6	28.8	31.4	32.5	27.5
	Quintile 4	24.4	29.4	26.6	32.2	35.0	32.0
	Quintile 5	30.1	30.0	28.0	28.5	30.9	27.7

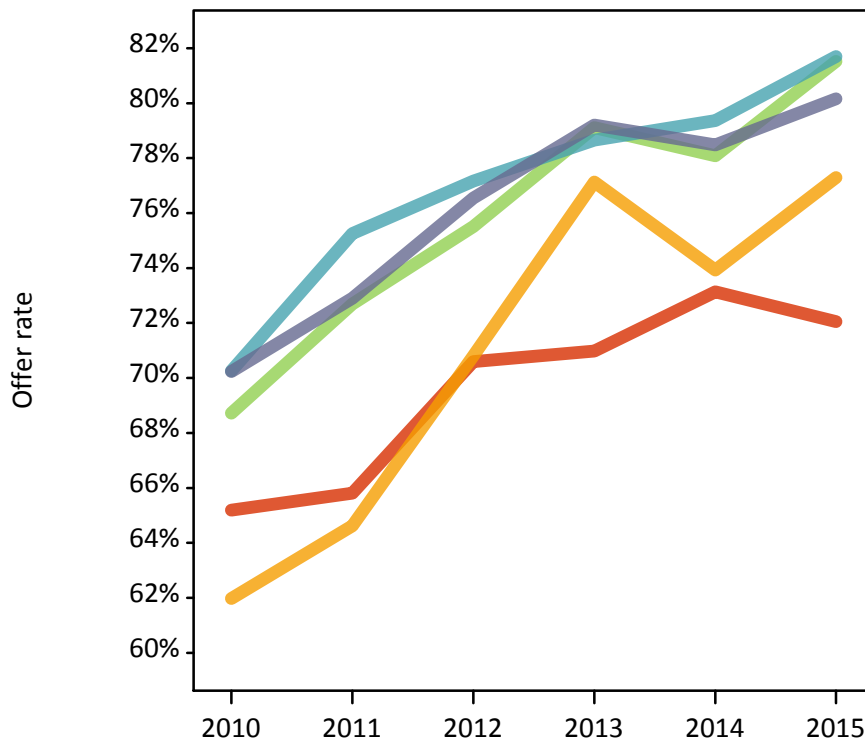
## P.8 18 year old applications by POLAR3 quintile

Statistic	POLAR3 quintile	2010	2011	2012	2013	2014	2015
June deadline applications	Quintile 1	410	545	550	635	790	695
	Quintile 2	780	995	990	1,165	1,335	1,225
	Quintile 3	1,725	1,990	2,135	2,285	2,595	2,320
	Quintile 4	1,855	2,240	2,245	2,580	2,785	2,645
	Quintile 5	2,100	2,335	2,495	2,615	2,810	2,620
Offers	Quintile 1	265	360	390	450	575	500
	Quintile 2	485	645	700	895	985	945
	Quintile 3	1,185	1,450	1,615	1,805	2,025	1,895
	Quintile 4	1,305	1,685	1,735	2,030	2,210	2,160
	Quintile 5	1,475	1,705	1,910	2,070	2,205	2,100
Offer rate	Quintile 1	65.2%	65.8%	70.6%	71.0%	73.1%	72.0%
	Quintile 2	62.0%	64.6%	70.8%	77.1%	73.9%	77.3%
	Quintile 3	68.7%	72.7%	75.5%	79.1%	78.1%	81.5%
	Quintile 4	70.3%	75.3%	77.2%	78.7%	79.4%	81.7%
	Quintile 5	70.2%	72.9%	76.6%	79.2%	78.5%	80.2%
Average offer rate	Quintile 1	63.6%	66.7%	70.2%	72.9%	74.1%	74.4%
	Quintile 2	64.1%	66.8%	72.8%	75.6%	74.6%	77.4%
	Quintile 3	69.7%	72.7%	75.7%	79.3%	78.2%	81.8%
	Quintile 4	70.0%	74.1%	76.9%	78.1%	79.2%	80.7%
	Quintile 5	69.2%	72.9%	75.9%	79.8%	78.0%	80.3%
Percentage point difference between offer rate and average offer rate	Quintile 1	1.5	-0.8	0.4	-1.9	-1.0	-2.3
	Quintile 2	-2.1	-2.1	-2.0	1.5	-0.7	-0.1
	Quintile 3	-1.0	-0.0	-0.2	-0.2	-0.1	-0.3
	Quintile 4	0.3	1.2	0.3	0.5	0.2	1.0
	Quintile 5	1.0	-0.0	0.6	-0.6	0.5	-0.1
Contribution of group to the average offer rate	Quintile 1	0.162	0.162	0.159	0.147	0.150	0.160
	Quintile 2	0.205	0.210	0.206	0.195	0.200	0.211
	Quintile 3	0.328	0.325	0.338	0.315	0.317	0.311
	Quintile 4	0.344	0.357	0.338	0.338	0.329	0.335
	Quintile 5	0.387	0.365	0.372	0.354	0.344	0.348

### P.9 18 year old offer rate by POLAR3 quintile

Note: The line for a group is not plotted when that group made fewer than 10 applications in any of the years from 2010-2015.

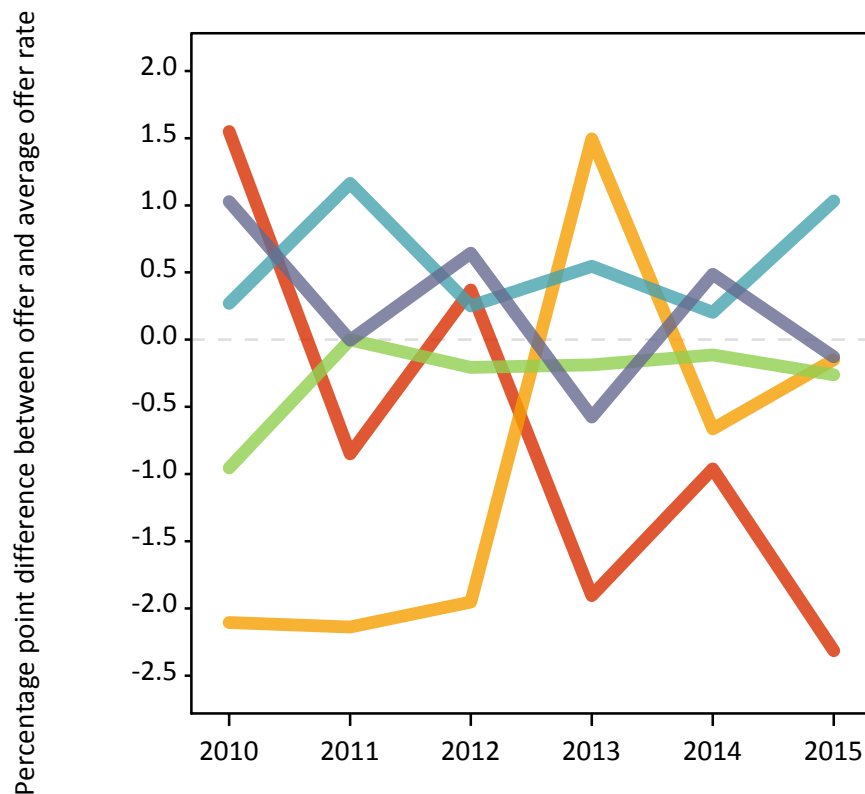
- Quintile 1
- Quintile 2
- Quintile 3
- Quintile 4
- Quintile 5



### P.10 Percentage point difference between 18 year old offer rate and average offer rate by POLAR3 quintile

Note: The line for a group is not plotted when that group made fewer than 50 applications in any of the years from 2010-2015.

- Quintile 1
- Quintile 2
- Quintile 3
- Quintile 4
- Quintile 5



## P.11 18 year old applicants by ethnic group

Statistic	Ethnic group	2010	2011	2012	2013	2014	2015
June deadline applicants	Asian	2,245	2,410	2,450	2,635	2,935	2,880
	Black	745	915	930	1,095	1,175	1,080
	Mixed	355	450	465	550	575	590
	White	2,885	3,595	3,760	4,125	4,655	4,110
	Other	325	340	440	490	570	540
Placed June deadline applicants	Asian	385	440	375	510	555	480
	Black	90	120	130	180	185	155
	Mixed	50	60	55	80	90	90
	White	405	505	515	560	560	540
	Other	60	70	85	85	100	95
All placed applicants	Asian	640	625	585	675	755	640
	Black	150	155	180	230	225	195
	Mixed	70	85	80	90	110	105
	White	510	620	595	645	635	600
	Other	95	95	135	115	120	120
June deadline applicants per 10,000 population	Asian	363.5	382.1	378.2	399.5	432.7	407.0
	Black	284.6	335.4	329.6	368.5	387.0	340.0
	Mixed	153.7	185.8	177.8	203.0	199.9	191.7
	White	43.0	55.5	58.2	65.6	75.4	65.9
	Other	424.7	422.2	497.3	541.5	613.5	561.8
Placed June deadline applicants per 10,000 population	Asian	62.6	70.0	57.8	77.3	82.0	67.6
	Black	33.6	43.2	46.5	61.0	60.7	49.3
	Mixed	22.0	24.8	21.9	28.8	32.0	28.9
	White	6.0	7.8	8.0	8.9	9.1	8.7
	Other	77.9	85.2	98.3	92.6	105.3	100.7
All placed applicants per 10,000 population	Asian	103.8	99.2	90.2	102.3	111.3	90.6
	Black	57.7	56.3	64.6	77.1	74.9	61.6
	Mixed	29.8	35.1	30.3	34.0	37.5	33.7
	White	7.6	9.6	9.2	10.3	10.3	9.6
	Other	126.0	114.8	150.3	127.9	128.9	125.6



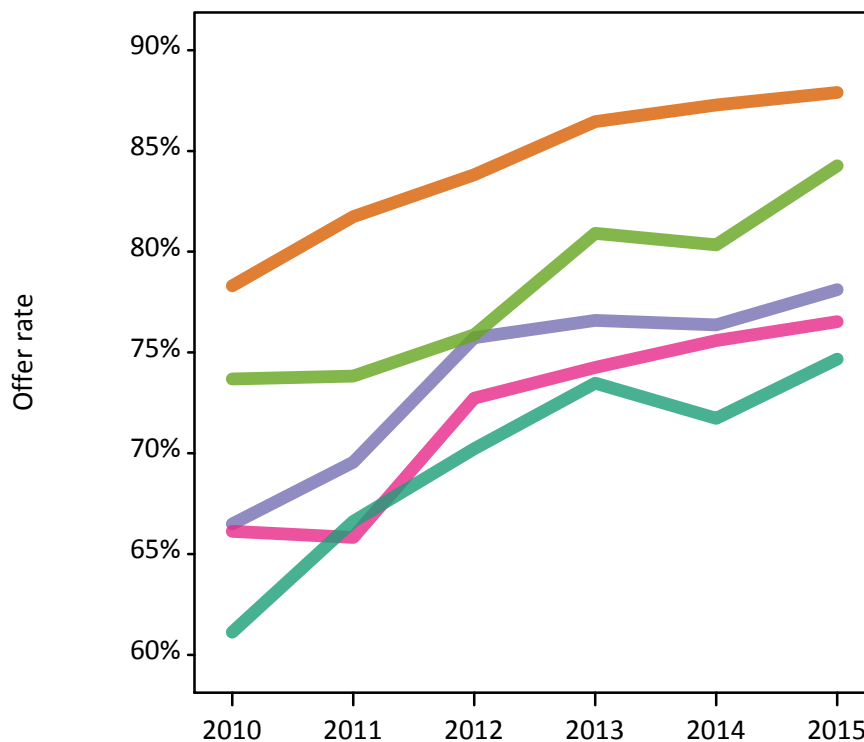
## P.12 18 year old applications by ethnic group

Statistic	Ethnic group	2010	2011	2012	2013	2014	2015
June deadline applications	Asian	2,340	2,515	2,535	2,740	3,035	2,960
	Black	765	935	960	1,120	1,210	1,100
	Mixed	370	475	475	570	600	605
	White	3,005	3,755	3,935	4,285	4,835	4,235
	Other	340	365	455	510	590	555
Offers	Asian	1,835	2,055	2,125	2,370	2,650	2,600
	Black	510	650	725	855	925	860
	Mixed	245	310	345	425	450	465
	White	1,835	2,500	2,765	3,150	3,470	3,165
	Other	250	270	345	410	475	465
Offer rate	Asian	78.3%	81.7%	83.8%	86.5%	87.3%	87.9%
	Black	66.5%	69.6%	75.7%	76.6%	76.4%	78.1%
	Mixed	66.1%	65.8%	72.7%	74.3%	75.6%	76.5%
	White	61.1%	66.6%	70.2%	73.5%	71.7%	74.7%
	Other	73.7%	73.8%	75.9%	80.9%	80.3%	84.3%
Average offer rate	Asian	78.0%	81.3%	82.5%	85.5%	86.1%	86.7%
	Black	67.7%	71.3%	75.6%	78.4%	77.8%	79.8%
	Mixed	64.8%	67.3%	72.9%	74.3%	73.5%	76.6%
	White	61.3%	66.1%	70.6%	73.7%	72.4%	75.2%
	Other	73.5%	74.7%	78.6%	80.6%	80.4%	83.1%
Percentage point difference between offer rate and average offer rate	Asian	0.3	0.4	1.3	1.0	1.2	1.2
	Black	-1.2	-1.8	0.1	-1.8	-1.4	-1.7
	Mixed	1.3	-1.4	-0.2	-0.0	2.1	-0.1
	White	-0.2	0.5	-0.4	-0.2	-0.6	-0.5
	Other	0.2	-0.9	-2.7	0.3	-0.1	1.1
Contribution of group to the average offer rate	Asian	0.515	0.467	0.462	0.432	0.426	0.438
	Black	0.236	0.226	0.229	0.210	0.197	0.190
	Mixed	0.163	0.162	0.155	0.142	0.144	0.138
	White	0.601	0.605	0.611	0.588	0.587	0.568
	Other	0.151	0.138	0.155	0.153	0.141	0.145

### P.13 18 year old offer rate by ethnic group

Note: The line for a group is not plotted when that group made fewer than 10 applications in any of the years from 2010-2015.

- Asian
- Black
- Mixed
- White
- Other



### P.14 Percentage point difference between 18 year old offer rate and average offer rate by ethnic group

Note: The line for a group is not plotted when that group made fewer than 50 applications in any of the years from 2010-2015.

- Asian
- Black
- Mixed
- White
- Other



### P.15 Applicants (all ages)

Statistic	2010	2011	2012	2013	2014	2015
June deadline applicants	17,725	19,900	18,055	19,655	21,965	20,075
Placed June deadline applicants	2,790	3,115	2,565	3,165	3,280	2,990
All placed applicants	4,065	4,085	3,580	4,065	4,145	3,825

### P.16 Applications (all ages)

Statistic	2010	2011	2012	2013	2014	2015
June deadline applications	18,890	21,160	19,050	20,630	23,075	20,910
Offers	10,515	12,295	11,820	13,785	15,425	14,235
Offer rate	55.7%	58.1%	62.0%	66.8%	66.8%	68.1%

### P.17 Applicants (all ages) by sex

Statistic	Sex	2010	2011	2012	2013	2014	2015
June deadline applicants	Men	8,135	9,195	8,165	8,735	9,580	8,700
	Women	9,585	10,705	9,890	10,915	12,380	11,375
Placed June deadline applicants	Men	1,240	1,380	1,120	1,370	1,415	1,310
	Women	1,555	1,735	1,445	1,795	1,865	1,680
All placed applicants	Men	1,840	1,865	1,590	1,790	1,760	1,685
	Women	2,225	2,220	1,995	2,275	2,390	2,140

### P.18 Applications (all ages) by sex

Statistic	Sex	2010	2011	2012	2013	2014	2015
June deadline applications	Men	8,715	9,835	8,655	9,240	10,110	9,140
	Women	10,175	11,325	10,400	11,390	12,965	11,770
Offers	Men	4,830	5,670	5,310	6,185	6,900	6,295
	Women	5,685	6,625	6,510	7,595	8,525	7,940
Offer rate	Men	55.4%	57.7%	61.4%	67.0%	68.3%	68.9%
	Women	55.9%	58.5%	62.6%	66.7%	65.8%	67.5%

### P.19 Applicants (all ages) by POLAR3 quintile

Statistic	POLAR3 quintile	2010	2011	2012	2013	2014	2015
June deadline applicants	Quintile 1	990	1,245	1,090	1,300	1,590	1,390
	Quintile 2	1,855	2,195	2,030	2,330	2,700	2,460
	Quintile 3	4,605	5,120	4,745	5,105	5,705	5,170
	Quintile 4	4,775	5,330	4,865	5,290	5,805	5,390
	Quintile 5	5,400	5,915	5,240	5,535	6,085	5,575
Placed June deadline applicants	Quintile 1	120	175	130	175	205	160
	Quintile 2	275	325	260	365	365	370
	Quintile 3	730	785	725	840	905	790
	Quintile 4	795	880	685	900	895	855
	Quintile 5	855	940	750	875	900	795
All placed applicants	Quintile 1	170	215	165	215	240	190
	Quintile 2	385	415	345	450	430	435
	Quintile 3	1,055	1,020	995	1,105	1,135	1,025
	Quintile 4	1,090	1,135	960	1,135	1,145	1,105
	Quintile 5	1,340	1,285	1,075	1,140	1,185	1,050

### P.20 Applications (all ages) by POLAR3 quintile

Statistic	POLAR3 quintile	2010	2011	2012	2013	2014	2015
June deadline applications	Quintile 1	1,030	1,300	1,120	1,350	1,655	1,435
	Quintile 2	1,940	2,325	2,145	2,435	2,835	2,550
	Quintile 3	4,925	5,460	4,995	5,355	6,025	5,405
	Quintile 4	5,090	5,660	5,120	5,560	6,070	5,610
	Quintile 5	5,800	6,315	5,580	5,840	6,400	5,815
Offers	Quintile 1	515	685	645	855	1,020	885
	Quintile 2	1,000	1,260	1,270	1,620	1,830	1,720
	Quintile 3	2,700	3,155	3,085	3,550	4,035	3,615
	Quintile 4	2,960	3,415	3,260	3,780	4,185	3,945
	Quintile 5	3,300	3,735	3,510	3,930	4,310	4,025
Offer rate	Quintile 1	50.0%	52.7%	57.4%	63.5%	61.6%	61.6%
	Quintile 2	51.4%	54.1%	59.3%	66.6%	64.6%	67.5%
	Quintile 3	54.8%	57.8%	61.8%	66.3%	66.9%	66.9%
	Quintile 4	58.2%	60.3%	63.7%	68.0%	68.9%	70.3%
	Quintile 5	56.9%	59.1%	63.0%	67.3%	67.4%	69.2%

## P.21 Applicants (all ages) by ethnic group

Statistic	Ethnic group	2010	2011	2012	2013	2014	2015
June deadline applicants	Asian	4,935	5,475	5,090	5,285	5,920	5,705
	Black	2,875	3,205	2,940	3,085	3,340	3,005
	Mixed	1,055	1,255	1,090	1,265	1,395	1,365
	White	7,725	8,725	7,615	8,620	9,700	8,510
	Other	885	920	1,100	1,140	1,355	1,240
Placed June deadline applicants	Asian	755	880	765	955	1,000	920
	Black	400	440	360	465	480	385
	Mixed	150	195	140	185	210	205
	White	1,295	1,365	1,095	1,345	1,345	1,230
	Other	155	175	180	180	210	210
All placed applicants	Asian	1,315	1,265	1,170	1,325	1,375	1,275
	Black	620	615	545	635	630	545
	Mixed	215	255	210	235	255	260
	White	1,560	1,640	1,300	1,545	1,555	1,415
	Other	275	235	280	260	280	275

## P.22 Applications (all ages) by ethnic group

Statistic	Ethnic group	2010	2011	2012	2013	2014	2015
June deadline applications	Asian	5,255	5,815	5,340	5,535	6,205	5,915
	Black	3,020	3,365	3,070	3,205	3,485	3,090
	Mixed	1,120	1,345	1,140	1,330	1,465	1,410
	White	8,270	9,285	8,075	9,090	10,240	8,950
	Other	950	990	1,190	1,195	1,425	1,290
Offers	Asian	3,470	3,970	3,795	4,265	4,795	4,620
	Black	1,530	1,770	1,705	1,990	2,140	1,910
	Mixed	585	720	655	840	945	890
	White	4,235	5,040	4,805	5,695	6,400	5,760
	Other	550	590	725	830	985	900
Offer rate	Asian	66.1%	68.3%	71.1%	77.0%	77.2%	78.1%
	Black	50.6%	52.6%	55.5%	62.0%	61.5%	61.8%
	Mixed	52.1%	53.7%	57.6%	63.3%	64.7%	63.0%
	White	51.2%	54.3%	59.5%	62.6%	62.5%	64.4%
	Other	57.8%	59.6%	60.8%	69.7%	69.4%	69.7%

## Technical Notes and Definitions

### UCAS undergraduate scheme

#### Adjustment

Adjustment allows applicants who have met and exceeded the terms of their conditional firm offer to seek and find a place at another provider whilst keeping their place at their original firm choice provider.

#### Clearing

Clearing is a route for applicants that are not placed and holding no offers to find a place on courses with vacancies.

#### Cycle year

The UCAS application cycle which runs from September to October the following year. For example the 2015 cycle runs from September 2014 through to October 2015.

#### End of cycle

The point in the cycle to which the numbers in this report refer, and the point at which the cycle is closed such that no more applications or offers can be made, and no more applicants can be placed. Numbers reported at the end of cycle exclude information on a small number of applicants who cancelled during the cycle.

#### Extra

Applicants who are unsuccessful in obtaining an offer or decline all offers may be eligible to apply through Extra, where they can apply to one further course at a time. Extra operates from 25 February until early July. It provides applicants who are eligible the possibility of obtaining an offer before exam results are published and Clearing starts.

#### June 30 deadline

The deadline for main scheme applications. Applicants who apply after this date will go directly into Clearing.

#### Record of Prior Acceptance (RPA)

RPA is an acceptance route used when a provider informs UCAS of applicants it has accepted outside of the normal application process (e.g. individuals who have applied directly to the provider).

### Reporting groups

#### Ethnic group

High level grouping of ethnic origin as declared by the applicant: 'White', 'Black', 'Asian', 'Mixed', 'Other', 'Unknown'. Applicants who declare themselves as 'Unknown' ethnic origin are not reported in these tables, but are included in the associated csv data file.

#### POLAR3 quintile

Developed by HEFCE, POLAR3 classifies small areas across the UK into five groups according to their level of young participation in Higher Education. Each of these groups represents around 20 per cent of young people and is ranked from Quintile 1 (areas with the lowest young participation rates, considered as the most disadvantaged) to Quintile 5 (highest young participation rates, considered most advantaged). POLAR3 is based on the participation rates of young people between 2005 and 2009 who entered Higher Education between 2005-06 and 2010-11, therefore is most suitable for applicants aged 19 and under. These groups are assigned using the postcode declared by the applicant at the time of their application. If a UK postcode is invalid, considered unsafe for measurement or there is no link to Census geography possible then the applicant is not assigned to a quintile. Applicants with no POLAR3 quintile are not reported.

#### Sex

Sex as declared by the applicant.

### **SIMD quintile**

Scottish index of multiple deprivation (SIMD) for 2012 identifies small area concentrations of multiple deprivation across all of Scotland, providing a relative measure of deprivation amongst 6505 small areas (data zones) based on 7 socio-economic domains. These small areas are classified into five groups ranked from Quintile 1 (considered the most deprived) to Quintile 5 (considered least deprived), with equal populations in each quintile. Quintiles are assigned using the postcode declared by the applicant, applicants declaring invalid postcodes are classified as 'Not assigned' and are not reported.

SIMD is only defined for applicants domiciled in Scotland, therefore any applicants domiciled outside of Scotland cannot be assigned to an SIMD quintile and so are not reported for this measure.

SIMD is only reported for providers in Scotland. Application and entry rates by SIMD are reported in the 2015 End of Cycle Report and the 2016 cycle January deadline application rate report.

### **Statistics reported in the tables**

#### **All placed applicants**

The number of applicants placed for entry into higher education at the provider through one of their choices, including any choices made through Extra, or via Adjustment, Clearing or RPA.

#### **All placed applicants per 10,000 population**

The number of total UK domiciled 18 year old placed applicants for entry into higher education at the provider divided by the number of UK 18 year olds in the population, multiplied by 10,000. This gives the number of 18 year olds, for every 10,000 in the population, that were placed at the provider through one of their choices, including any choices made through Extra, or via Adjustment, Clearing or RPA. It is an alternative way of expressing the entry rate to a provider. By referencing the underlying population this statistic shows how the number of placed applicants is changing in relation to the available pool of potential applicants and so gives the chance that somebody from the group will be placed at a provider.

This statistic is only reported for 18 year olds.

#### **Average offer rate**

The offer rate that you might expect if the predicted grades and subject choice of applicants were the only factors that influenced whether an applicant was made an offer by the provider. The average offer rate is calculated by dividing applicants according to their specific combination of grades (for A levels the best three predicted grades are used, for BTECs, International Baccalaureate and Scottish Highers and Advanced Highers, predicted grades along with any grades already achieved upon applying are used) and subject choice. For each combination the number of main scheme offers is divided by the number of main scheme applications, to give an overall offer rate. This is then multiplied by the number of applications made by the group for which the average offer rate is being calculated (for example POLAR3 quintile 1), to give an average number of offers for that group. These average number of offers are then added together across all combinations of predicted grade and subject and divided by the number of main scheme applications from the group to give the average offer rate.

The average offer rate does not attempt to control for any other factors that may play a part in the decision to make an offer, such as the subject of the qualifications studied, their relevance to a course, or the grade in each subject; higher numbers of A levels being studied; the exact profile of grades predicted; personal statements; teacher references; interviews; or any other criteria (such as work experience or portfolios) that may be part of the admissions decision.

This statistic is only reported for 18 year olds.



### Contribution of group to the average offer rate

The way in which the average offer rate is defined means that the pattern of application and offers of a group (for example POLAR3 quintile 1) will always contribute, in part, to the average offer rate for that group. When this contribution is large, the average offer rate will mainly reflect the patterns for the group, meaning that the value of the average offer rate will be similar to the offer rate, the percentage point difference statistic will be small, and any real difference between the offer rate and what might be expected given the predicted grades and subject choices of the applicants will be difficult to detect.

Values of the contribution of group to the average offer rate range between 0 and 1. The closer the value is to 1 the greater the contribution a group makes to its own average offer rate.

This statistic is only reported for 18 year olds.

### Placed June deadline applicants

An applicant who has been placed for entry into higher education at the provider through a June deadline application.

### Placed June deadline applicants per 10,000 population

The number of UK domiciled 18 year old placed June deadline applicants at the provider divided by the number of UK 18 year olds in the population, multiplied by 10,000. This gives the number of 18 year olds, for every 10,000 in the population, that were placed at the provider through one of their June deadline applications. It is an alternative way of expressing the entry rate to a provider, but for placed June deadline applicants only. By referencing the underlying population this statistic shows how the number of placed June deadline applicants is changing in relation to the available pool of potential 18 year old applicants and so gives the chance that somebody from the group will be placed at a provider through a June deadline application.

This statistic is only reported for 18 year olds.

### June deadline applications

An application (or choice) to a course in higher education to the provider that is made by the June 30 deadline. Each applicant can make up to five choices this way. The number of June deadline applications does not include choices made through the following routes: Clearing, Extra, Adjustment and RPAs. Applications made to October deadline courses received after the October deadline are not included in these statistics.

### June deadline applicants

The number of applicants that made at least one application to the provider by the June 30 deadline.

### June deadline applicants per 10,000 population

The number of UK domiciled 18 year old June deadline applicants to the provider divided by the number of UK 18 year olds in the population, multiplied by 10,000. This gives the number of 18 year olds, for every 10,000 in the population, who applied by the June 30 deadline. It is equivalent to the application rate. By referencing the underlying population this statistic shows how the number of June deadline applicants is changing in relation to the available pool of potential 18 year old applicants and so gives the chance that somebody from the group will apply to a provider by the June 30 deadline.

This statistic is only reported for 18 year olds.

### Offers

An offer is defined as a provider's decision in response to an application to offer a place to an applicant, often subject to the applicant satisfying academic and/or other criteria, via a June deadline application (i.e. does not cover choices made through the following routes: Clearing, Extra, Adjustment and RPAs).

### Offer rate

The number of offers made divided by the number of June deadline applications. This gives the proportion of all June deadline applications to the provider that received an offer.

### Percentage point difference between offer rate and average offer rate

The offer rate minus the average offer rate.

The percentage point difference can be compared to the expected range of statistical variation resulting from the calculation of the average offer rate using the Average Offer Rate Lookup Table. Where the value of the percentage point difference lies outside of this range, the percentage point difference may be considered to represent a real difference between the offer rate and the average offer rate.

### Other definitions

#### Age

This analysis uses country-specific age definitions that align with the cut off points for school and college cohorts within the different administrations of the UK. For England and Wales, ages are defined on the 31 August, for Northern Ireland on the 1 July and for Scotland on the 28 February the following year. Defining ages in this way matches the assignment of children to school cohorts. For applicants outside of the UK a cohort cut off of 31 August has been used.

#### Provider

A higher education provider - a university or college.

#### UK domiciled

Declared area of permanent residence within England, Northern Ireland, Scotland and Wales. Applicants from the Channel Islands and Isle of Man are not included.