

W76 University of Winchester

Cycle years: 2010 - 2015

Cycle Reference Point: End of Cycle

Applicant coverage: UK domiciled

Reporting groups: Sex, POLAR3, ethnic group

Applicant statistics: June deadline applicants, placed June deadline applicants, all placed applicants, June deadline applicants per 10,000 population, placed June deadline applicants per 10,000 population, all placed applicants per 10,000 population

Application statistics: June deadline applications, offers, offer rate, average offer rate, percentage point difference between offer rate and average offer rate, contribution of group to the average offer rate

Non-disclosure controls: To avoid the disclosure of information about any individual the following measures are taken

- Applicants, placed applicants, applications and offers are rounded to the nearest 5.
- Applicants/placed applicants per 10,000 population figures are reported as 0 if the applicant/placed applicant figures are rounded to 0.
- All statistics related to the offer rate are not reported when the number of applications for a group is less than 10. The percentage point difference between the offer rate and the average offer rate is not reported when the number of applications for a group is less than 50.
- Offer rates are reported as 0% if there are fewer than 5 offers, and 100% if the number of offers is within 5 of the number of applications. When the offer rate is reported as 0% or 100%, it is reported in italics.

Contents:

18 year old applicants:	P.1
18 year old applications:	P.2
18 year old applicants by sex:	P.3
18 year old applications by sex:	P.4
18 year old applicants by POLAR3 quintile:	P.7
18 year old applications by POLAR3 quintile:	P.8
18 year old applicants by ethnic group:	P.11
18 year old applications by ethnic group:	P.12
Applicants (all ages):	P.15
Applications (all ages):	P.16
Applicants (all ages) by sex:	P.17
Applications (all ages) by sex:	P.18
Applicants (all ages) by POLAR3 quintile:	P.19
Applications (all ages) by POLAR3 quintile:	P.20
Applicants (all ages) by ethnic group:	P.21
Applications (all ages) by ethnic group:	P.22

P.1 18 year old applicants

Statistic	2010	2011	2012	2013	2014	2015
June deadline applicants	4,375	5,225	5,370	4,505	4,925	5,380
Placed June deadline applicants	845	1,000	1,050	1,100	1,090	1,250
All placed applicants	860	1,010	1,095	1,190	1,245	1,360
June deadline applicants per 10,000 population	55.4	67.9	69.4	59.2	65.4	70.2
Placed June deadline applicants per 10,000	10.7	13.0	13.5	14.5	14.5	16.3
All placed applicants per 10,000 population	10.9	13.1	14.1	15.6	16.5	17.7

P.2 18 year old applications

Statistic	2010	2011	2012	2013	2014	2015
June deadline applications	4,685	5,555	5,610	4,670	5,185	5,600
Offers	3,615	4,100	4,665	4,025	4,540	5,150
Offer rate	77.1%	73.8%	83.2%	86.2%	87.6%	91.9%

P.3 18 year old applicants by sex

Statistic	Sex	2010	2011	2012	2013	2014	2015
June deadline applicants	Men	1,445	1,670	1,715	1,320	1,560	1,575
	Women	2,925	3,555	3,655	3,185	3,365	3,805
Placed June deadline applicants	Men	275	315	355	330	335	365
	Women	575	685	690	770	755	885
All placed applicants	Men	275	315	370	355	395	400
	Women	585	695	725	835	850	960
June deadline applicants per 10,000 population	Men	36.0	42.5	43.3	33.8	40.2	40.2
	Women	75.4	94.4	96.9	85.9	92.0	101.8
Placed June deadline applicants per 10,000 population	Men	6.8	8.0	9.0	8.4	8.7	9.3
	Women	14.8	18.2	18.3	20.8	20.7	23.7
All placed applicants per 10,000 population	Men	6.9	8.1	9.3	9.1	10.2	10.1
	Women	15.1	18.4	19.2	22.5	23.2	25.7

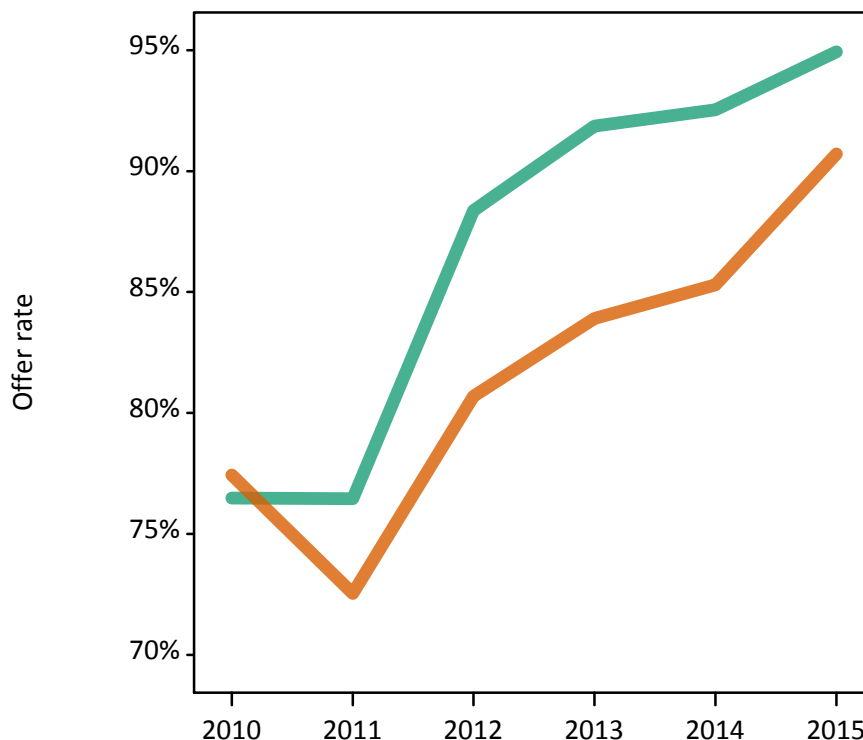
P.4 18 year old applications by sex

Statistic	Sex	2010	2011	2012	2013	2014	2015
June deadline applications	Men	1,550	1,765	1,795	1,375	1,650	1,635
	Women	3,140	3,790	3,810	3,290	3,535	3,965
Offers	Men	1,185	1,350	1,590	1,265	1,525	1,555
	Women	2,430	2,750	3,075	2,760	3,015	3,595
Offer rate	Men	76.5%	76.5%	88.4%	91.9%	92.5%	94.9%
	Women	77.4%	72.5%	80.7%	83.9%	85.3%	90.7%
Average offer rate	Men	77.4%	76.3%	86.5%	92.7%	93.2%	95.7%
	Women	77.0%	72.6%	81.6%	83.6%	85.0%	90.4%
Percentage point difference between offer rate and average offer rate	Men	-0.9	0.1	1.8	-0.8	-0.7	-0.8
	Women	0.5	-0.1	-0.9	0.3	0.3	0.3
Contribution of group to the average offer rate	Men	0.500	0.473	0.494	0.505	0.528	0.469
	Women	0.753	0.755	0.761	0.793	0.780	0.781

P.5 18 year old offer rate by sex

Note: The line for a group is not plotted when that group made fewer than 10 applications in any of the years from 2010-2015.

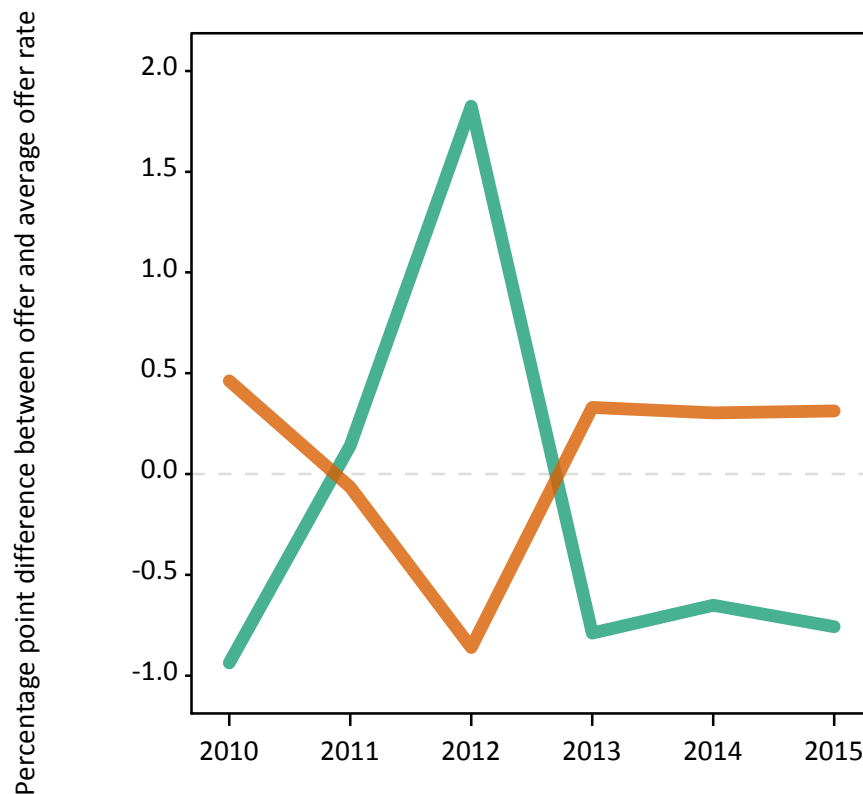
Men
Women



P.6 Percentage point difference between 18 year old offer rate and average offer rate by sex

Note: The line for a group is not plotted when that group made fewer than 50 applications in any of the years from 2010-2015.

Men
Women



P.7 18 year old applicants by POLAR3 quintile

Statistic	POLAR3 quintile	2010	2011	2012	2013	2014	2015
June deadline applicants	Quintile 1	500	595	605	540	590	610
	Quintile 2	715	805	820	715	810	865
	Quintile 3	860	1,085	1,090	890	1,015	1,090
	Quintile 4	1,145	1,295	1,400	1,125	1,235	1,385
	Quintile 5	1,150	1,435	1,450	1,230	1,270	1,420
Placed June deadline applicants	Quintile 1	100	115	110	130	120	140
	Quintile 2	125	150	155	175	175	200
	Quintile 3	170	230	210	220	220	240
	Quintile 4	225	260	295	275	285	330
	Quintile 5	225	240	280	300	290	335
All placed applicants	Quintile 1	100	120	120	140	145	150
	Quintile 2	130	150	160	185	195	210
	Quintile 3	170	230	220	235	250	265
	Quintile 4	235	260	305	300	325	360
	Quintile 5	225	240	290	325	330	365
June deadline applicants per 10,000 population	Quintile 1	33.6	41.3	42.3	38.7	42.3	43.6
	Quintile 2	46.6	53.4	54.6	48.7	55.4	58.2
	Quintile 3	54.0	70.4	70.6	58.4	67.4	70.9
	Quintile 4	72.0	82.8	88.3	71.9	80.1	88.3
	Quintile 5	67.9	86.8	86.3	74.4	77.7	84.8
Placed June deadline applicants per 10,000 population	Quintile 1	6.8	8.1	7.9	9.3	8.7	10.0
	Quintile 2	8.2	10.1	10.4	11.9	12.0	13.5
	Quintile 3	10.6	14.8	13.5	14.5	14.6	15.7
	Quintile 4	14.3	16.7	18.5	17.5	18.4	21.0
	Quintile 5	13.2	14.4	16.5	18.0	17.8	20.1
All placed applicants per 10,000 population	Quintile 1	6.8	8.3	8.3	10.2	10.3	10.8
	Quintile 2	8.3	10.1	10.7	12.7	13.3	14.1
	Quintile 3	10.6	14.9	14.1	15.3	16.5	17.3
	Quintile 4	14.9	16.7	19.2	19.2	21.0	23.0
	Quintile 5	13.3	14.6	17.4	19.6	20.4	21.9

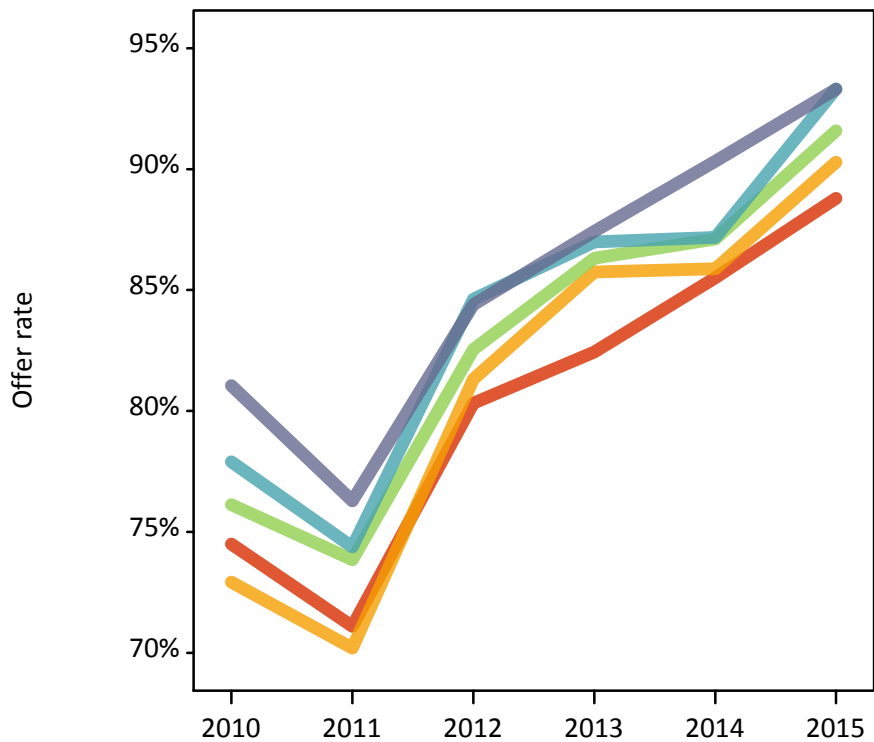
P.8 18 year old applications by POLAR3 quintile

Statistic	POLAR3 quintile	2010	2011	2012	2013	2014	2015
June deadline applications	Quintile 1	545	640	635	560	630	640
	Quintile 2	770	870	850	745	835	905
	Quintile 3	930	1,145	1,145	920	1,070	1,115
	Quintile 4	1,235	1,370	1,465	1,170	1,295	1,440
	Quintile 5	1,205	1,515	1,505	1,275	1,345	1,480
Offers	Quintile 1	405	455	510	460	535	570
	Quintile 2	560	610	690	640	720	820
	Quintile 3	710	845	945	795	935	1,025
	Quintile 4	960	1,020	1,240	1,015	1,130	1,340
	Quintile 5	975	1,155	1,270	1,115	1,215	1,380
Offer rate	Quintile 1	74.5%	71.1%	80.3%	82.4%	85.5%	88.8%
	Quintile 2	72.9%	70.2%	81.3%	85.8%	85.9%	90.3%
	Quintile 3	76.1%	73.8%	82.5%	86.3%	87.1%	91.6%
	Quintile 4	77.9%	74.4%	84.6%	87.0%	87.2%	93.3%
	Quintile 5	81.0%	76.3%	84.4%	87.4%	90.3%	93.3%
Average offer rate	Quintile 1	75.7%	72.6%	80.7%	84.7%	86.6%	90.5%
	Quintile 2	75.3%	73.1%	83.4%	86.7%	86.1%	90.7%
	Quintile 3	76.0%	73.8%	83.1%	86.0%	87.5%	92.2%
	Quintile 4	78.0%	73.3%	83.1%	85.9%	87.3%	92.6%
	Quintile 5	78.9%	75.0%	84.0%	87.0%	89.2%	92.5%
Percentage point difference between offer rate and average offer rate	Quintile 1	-1.2	-1.5	-0.4	-2.2	-1.1	-1.7
	Quintile 2	-2.4	-2.9	-2.1	-1.0	-0.2	-0.4
	Quintile 3	0.1	0.0	-0.6	0.3	-0.4	-0.6
	Quintile 4	-0.1	1.1	1.5	1.0	-0.1	0.7
	Quintile 5	2.1	1.3	0.4	0.4	1.1	0.8
Contribution of group to the average offer rate	Quintile 1	0.209	0.226	0.205	0.212	0.230	0.207
	Quintile 2	0.251	0.239	0.233	0.257	0.255	0.257
	Quintile 3	0.284	0.279	0.270	0.291	0.293	0.278
	Quintile 4	0.338	0.311	0.326	0.336	0.330	0.342
	Quintile 5	0.336	0.346	0.344	0.355	0.343	0.351

P.9 18 year old offer rate by POLAR3 quintile

Note: The line for a group is not plotted when that group made fewer than 10 applications in any of the years from 2010-2015.

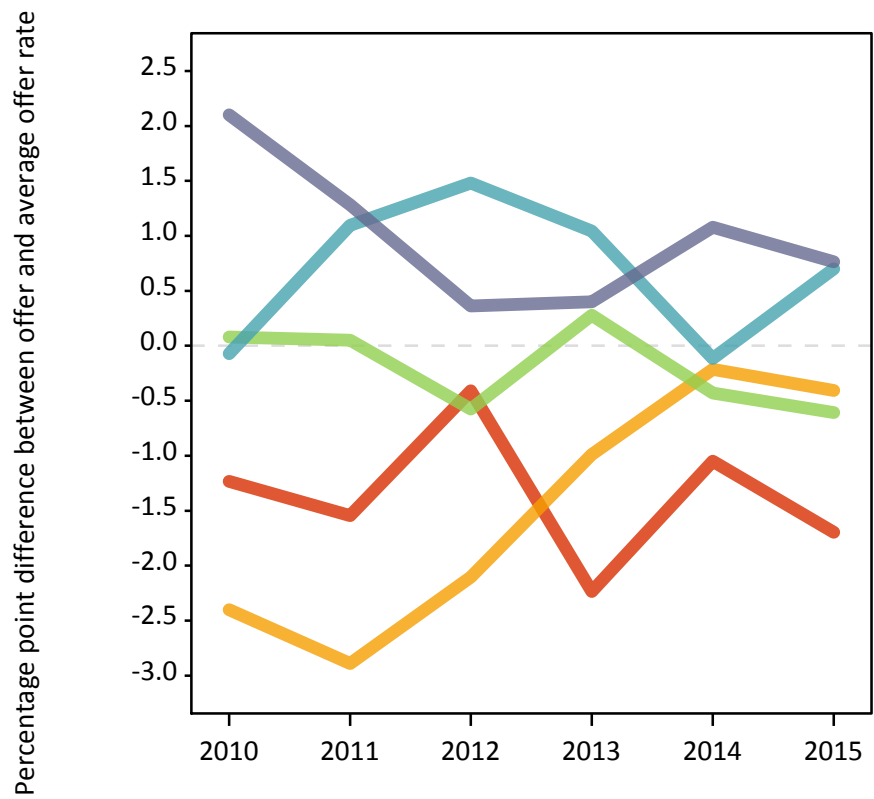
- Quintile 1
- Quintile 2
- Quintile 3
- Quintile 4
- Quintile 5



P.10 Percentage point difference between 18 year old offer rate and average offer rate by POLAR3 quintile

Note: The line for a group is not plotted when that group made fewer than 50 applications in any of the years from 2010-2015.

- Quintile 1
- Quintile 2
- Quintile 3
- Quintile 4
- Quintile 5



P.11 18 year old applicants by ethnic group

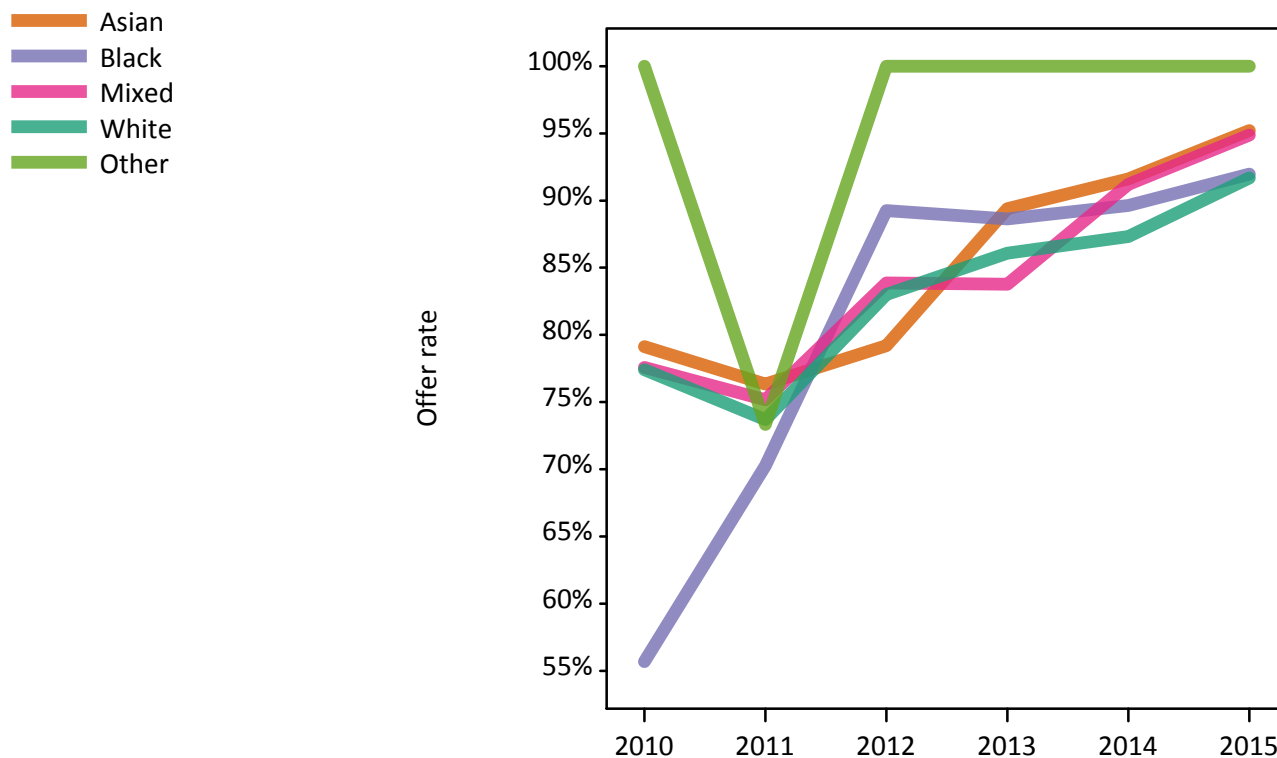
Statistic	Ethnic group	2010	2011	2012	2013	2014	2015
June deadline applicants	Asian	110	120	145	130	150	185
	Black	85	110	120	85	105	110
	Mixed	100	130	150	105	150	190
	White	4,050	4,820	4,910	4,155	4,485	4,855
	Other	20	30	30	25	20	25
Placed June deadline applicants	Asian	15	20	30	25	30	35
	Black	10	15	20	15	15	15
	Mixed	10	20	30	20	25	40
	White	805	935	965	1,035	1,015	1,145
	Other	0	5	5	5	5	5
All placed applicants	Asian	20	20	30	30	45	50
	Black	10	15	20	15	25	20
	Mixed	10	20	30	20	30	50
	White	820	945	1,005	1,110	1,130	1,230
	Other	0	5	5	5	5	5
June deadline applicants per 10,000 population	Asian	17.5	19.4	22.7	19.4	22.0	26.1
	Black	32.5	39.5	43.0	29.0	35.0	34.9
	Mixed	44.0	53.7	58.4	39.6	52.1	61.0
	White	60.4	74.4	76.0	66.0	72.7	77.9
	Other	24.7	35.8	31.6	25.4	23.6	27.0
Placed June deadline applicants per 10,000 population	Asian	2.6	3.3	4.3	4.1	4.6	4.9
	Black	3.8	6.2	7.1	4.4	5.3	5.3
	Mixed	5.2	9.1	10.7	6.7	9.0	13.6
	White	12.0	14.4	14.9	16.4	16.5	18.4
	Other	0.0	6.2	5.7	6.6	3.2	5.2
All placed applicants per 10,000 population	Asian	3.1	3.3	4.8	4.7	6.9	6.8
	Black	3.8	6.2	7.1	5.1	8.6	6.6
	Mixed	5.2	9.1	11.1	8.1	11.1	15.9
	White	12.2	14.6	15.6	17.7	18.3	19.7
	Other	0.0	6.2	5.7	7.7	5.4	5.2

P.12 18 year old applications by ethnic group

Statistic	Ethnic group	2010	2011	2012	2013	2014	2015
June deadline applications	Asian	115	130	150	130	155	190
	Black	90	110	120	90	105	110
	Mixed	105	135	155	110	160	195
	White	4,345	5,125	5,140	4,310	4,730	5,060
	Other	20	30	30	25	25	25
Offers	Asian	90	100	120	120	140	180
	Black	50	80	110	80	95	105
	Mixed	85	105	130	95	145	185
	White	3,365	3,780	4,265	3,710	4,130	4,640
	Other	15	20	30	20	20	25
Offer rate	Asian	79.1%	76.3%	79.2%	89.4%	91.6%	95.2%
	Black	55.7%	70.3%	89.3%	88.6%	89.6%	92.0%
	Mixed	77.6%	75.2%	83.9%	83.8%	91.2%	94.9%
	White	77.4%	73.7%	83.0%	86.1%	87.3%	91.7%
	Other	100.0%	73.3%	100.0%	100.0%	100.0%	100.0%
Average offer rate	Asian	82.2%	76.9%	81.8%	92.5%	93.1%	96.2%
	Black	70.6%	74.4%	84.8%	91.2%	91.5%	94.7%
	Mixed	75.7%	73.7%	83.1%	86.3%	91.4%	92.9%
	White	77.1%	73.6%	83.1%	85.9%	87.2%	91.7%
	Other	83.0%	77.2%	89.3%	90.2%	96.2%	96.0%
Percentage point difference between offer rate and average offer rate	Asian	-3.1	-0.5	-2.6	-3.1	-1.5	-1.0
	Black	-15.0	-4.1	4.5	-2.6	-1.9	-2.7
	Mixed	1.9	1.5	0.8	-2.5	-0.2	2.0
	White	0.3	0.1	-0.1	0.2	0.1	0.0
	Other	N/A	N/A	N/A	N/A	N/A	N/A
Contribution of group to the average offer rate	Asian	0.191	0.168	0.158	0.157	0.161	0.164
	Black	0.131	0.126	0.157	0.188	0.167	0.164
	Mixed	0.122	0.116	0.128	0.137	0.138	0.154
	White	0.938	0.935	0.928	0.936	0.925	0.918
	Other	0.139	0.088	0.086	0.174	0.159	0.155

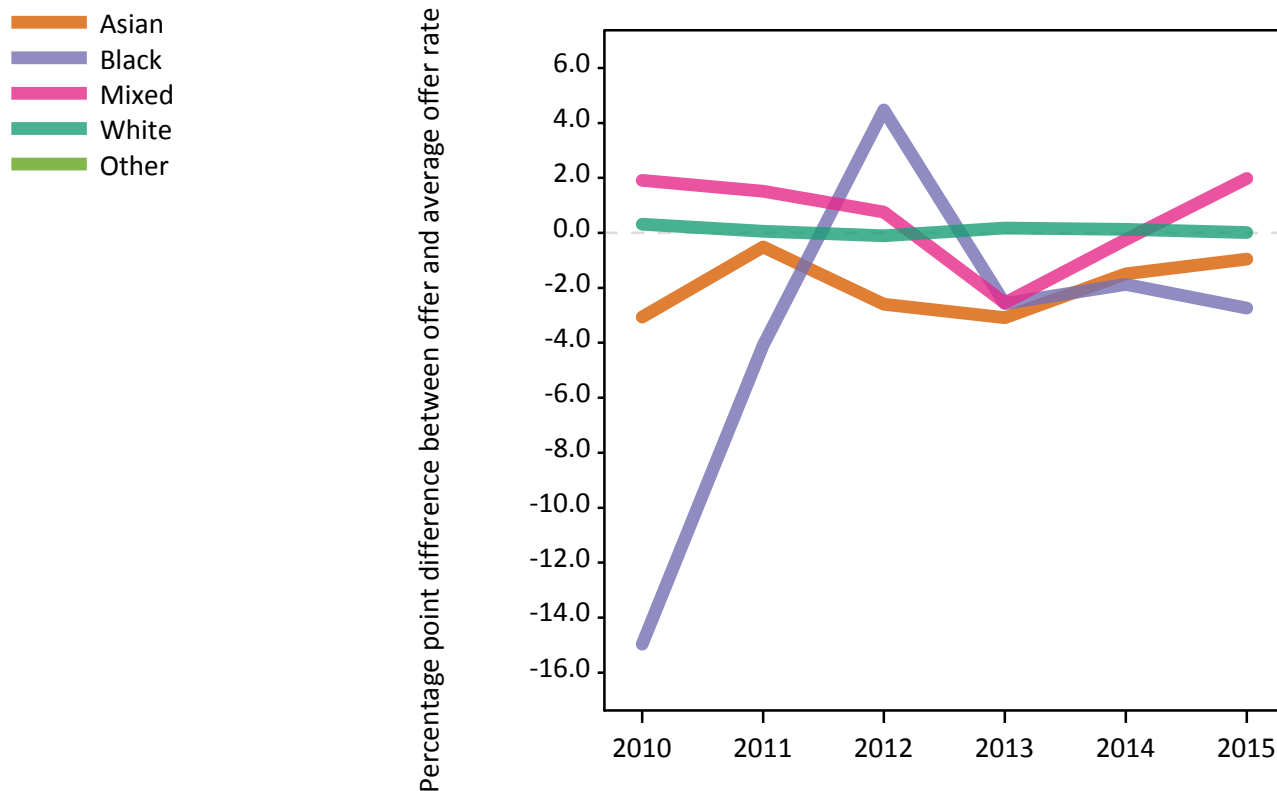
P.13 18 year old offer rate by ethnic group

Note: The line for a group is not plotted when that group made fewer than 10 applications in any of the years from 2010-2015.



P.14 Percentage point difference between 18 year old offer rate and average offer rate by ethnic group

Note: The line for a group is not plotted when that group made fewer than 50 applications in any of the years from 2010-2015.



P.15 Applicants (all ages)

Statistic	2010	2011	2012	2013	2014	2015
June deadline applicants	7,215	8,270	8,185	7,070	7,670	8,190
Placed June deadline applicants	1,475	1,660	1,710	1,765	1,790	1,960
All placed applicants	1,525	1,680	1,805	1,950	2,050	2,190

P.16 Applications (all ages)

Statistic	2010	2011	2012	2013	2014	2015
June deadline applications	7,955	9,015	8,735	7,440	8,220	8,640
Offers	5,485	6,090	6,745	6,145	6,830	7,615
Offer rate	69.0%	67.6%	77.2%	82.6%	83.1%	88.1%

P.17 Applicants (all ages) by sex

Statistic	Sex	2010	2011	2012	2013	2014	2015
June deadline applicants	Men	2,530	2,810	2,785	2,325	2,600	2,685
	Women	4,685	5,460	5,400	4,745	5,070	5,500
Placed June deadline applicants	Men	500	545	590	605	595	630
	Women	975	1,115	1,120	1,165	1,195	1,330
All placed applicants	Men	525	545	620	665	695	715
	Women	1,000	1,130	1,190	1,285	1,355	1,475

P.18 Applications (all ages) by sex

Statistic	Sex	2010	2011	2012	2013	2014	2015
June deadline applications	Men	2,780	3,040	2,960	2,450	2,790	2,815
	Women	5,175	5,975	5,775	4,990	5,430	5,825
Offers	Men	1,895	2,120	2,420	2,135	2,455	2,570
	Women	3,590	3,970	4,325	4,010	4,375	5,050
Offer rate	Men	68.2%	69.8%	81.7%	87.2%	88.1%	91.2%
	Women	69.4%	66.4%	74.9%	80.4%	80.6%	86.7%

P.19 Applicants (all ages) by POLAR3 quintile

Statistic	POLAR3 quintile	2010	2011	2012	2013	2014	2015
June deadline applicants	Quintile 1	950	1,065	1,100	920	1,035	1,045
	Quintile 2	1,190	1,370	1,340	1,195	1,325	1,360
	Quintile 3	1,430	1,675	1,595	1,450	1,525	1,660
	Quintile 4	1,850	2,015	2,090	1,695	1,880	2,035
	Quintile 5	1,790	2,120	2,040	1,800	1,885	2,065
Placed June deadline applicants	Quintile 1	205	210	235	245	240	255
	Quintile 2	235	290	280	285	300	330
	Quintile 3	280	350	310	365	355	385
	Quintile 4	385	405	460	425	465	485
	Quintile 5	375	395	425	445	430	500
All placed applicants	Quintile 1	205	215	255	270	285	285
	Quintile 2	245	295	290	320	335	360
	Quintile 3	285	355	330	395	395	430
	Quintile 4	400	405	485	475	535	545
	Quintile 5	385	395	450	485	495	565

P.20 Applications (all ages) by POLAR3 quintile

Statistic	POLAR3 quintile	2010	2011	2012	2013	2014	2015
June deadline applications	Quintile 1	1,075	1,180	1,215	970	1,125	1,120
	Quintile 2	1,305	1,515	1,425	1,260	1,400	1,445
	Quintile 3	1,595	1,815	1,700	1,530	1,635	1,740
	Quintile 4	2,040	2,180	2,225	1,785	2,025	2,135
	Quintile 5	1,925	2,300	2,155	1,885	2,020	2,180
Offers	Quintile 1	685	740	885	760	905	935
	Quintile 2	890	1,005	1,085	1,015	1,135	1,255
	Quintile 3	1,065	1,205	1,300	1,255	1,360	1,535
	Quintile 4	1,410	1,490	1,730	1,515	1,700	1,915
	Quintile 5	1,430	1,635	1,735	1,595	1,715	1,955
Offer rate	Quintile 1	63.7%	62.8%	72.8%	78.4%	80.6%	83.5%
	Quintile 2	67.9%	66.5%	75.9%	80.6%	81.0%	86.9%
	Quintile 3	66.7%	66.3%	76.5%	82.0%	83.3%	88.2%
	Quintile 4	69.2%	68.3%	77.8%	84.8%	83.9%	89.8%
	Quintile 5	74.3%	71.0%	80.4%	84.6%	85.0%	89.8%

P.21 Applicants (all ages) by ethnic group

Statistic	Ethnic group	2010	2011	2012	2013	2014	2015
June deadline applicants	Asian	185	230	285	220	275	300
	Black	230	250	340	230	255	290
	Mixed	210	235	240	185	240	295
	White	6,520	7,485	7,230	6,375	6,830	7,230
	Other	40	40	55	50	40	45
Placed June deadline applicants	Asian	25	50	45	50	55	55
	Black	30	45	65	40	45	55
	Mixed	35	40	45	35	55	65
	White	1,370	1,515	1,535	1,630	1,620	1,775
	Other	5	5	15	10	10	5
All placed applicants	Asian	30	50	50	60	90	80
	Black	35	45	75	55	65	80
	Mixed	40	40	50	45	65	75
	White	1,405	1,535	1,615	1,775	1,810	1,945
	Other	5	5	15	10	15	10

P.22 Applications (all ages) by ethnic group

Statistic	Ethnic group	2010	2011	2012	2013	2014	2015
June deadline applications	Asian	205	250	290	230	290	305
	Black	240	260	355	240	260	295
	Mixed	240	245	250	190	255	310
	White	7,190	8,190	7,755	6,715	7,340	7,655
	Other	45	45	60	50	45	45
Offers	Asian	145	175	225	195	245	285
	Black	105	150	225	175	195	230
	Mixed	160	165	200	155	220	280
	White	5,015	5,555	6,020	5,565	6,110	6,755
	Other	30	25	50	40	40	40
Offer rate	Asian	71.6%	69.6%	77.9%	85.2%	84.2%	93.4%
	Black	44.4%	58.9%	62.8%	72.9%	74.8%	77.8%
	Mixed	66.8%	67.9%	80.8%	82.0%	87.4%	90.3%
	White	69.8%	67.8%	77.6%	82.9%	83.2%	88.2%
	Other	72.1%	55.6%	87.9%	87.5%	100.0%	100.0%

Technical Notes and Definitions

UCAS undergraduate scheme

Adjustment

Adjustment allows applicants who have met and exceeded the terms of their conditional firm offer to seek and find a place at another provider whilst keeping their place at their original firm choice provider.

Clearing

Clearing is a route for applicants that are not placed and holding no offers to find a place on courses with vacancies.

Cycle year

The UCAS application cycle which runs from September to October the following year. For example the 2015 cycle runs from September 2014 through to October 2015.

End of cycle

The point in the cycle to which the numbers in this report refer, and the point at which the cycle is closed such that no more applications or offers can be made, and no more applicants can be placed. Numbers reported at the end of cycle exclude information on a small number of applicants who cancelled during the cycle.

Extra

Applicants who are unsuccessful in obtaining an offer or decline all offers may be eligible to apply through Extra, where they can apply to one further course at a time. Extra operates from 25 February until early July. It provides applicants who are eligible the possibility of obtaining an offer before exam results are published and Clearing starts.

June 30 deadline

The deadline for main scheme applications. Applicants who apply after this date will go directly into Clearing.

Record of Prior Acceptance (RPA)

RPA is an acceptance route used when a provider informs UCAS of applicants it has accepted outside of the normal application process (e.g. individuals who have applied directly to the provider).

Reporting groups

Ethnic group

High level grouping of ethnic origin as declared by the applicant: 'White', 'Black', 'Asian', 'Mixed', 'Other', 'Unknown'. Applicants who declare themselves as 'Unknown' ethnic origin are not reported in these tables, but are included in the associated csv data file.

POLAR3 quintile

Developed by HEFCE, POLAR3 classifies small areas across the UK into five groups according to their level of young participation in Higher Education. Each of these groups represents around 20 per cent of young people and is ranked from Quintile 1 (areas with the lowest young participation rates, considered as the most disadvantaged) to Quintile 5 (highest young participation rates, considered most advantaged). POLAR3 is based on the participation rates of young people between 2005 and 2009 who entered Higher Education between 2005-06 and 2010-11, therefore is most suitable for applicants aged 19 and under. These groups are assigned using the postcode declared by the applicant at the time of their application. If a UK postcode is invalid, considered unsafe for measurement or there is no link to Census geography possible then the applicant is not assigned to a quintile. Applicants with no POLAR3 quintile are not reported.

Sex

Sex as declared by the applicant.

SIMD quintile

Scottish index of multiple deprivation (SIMD) for 2012 identifies small area concentrations of multiple deprivation across all of Scotland, providing a relative measure of deprivation amongst 6505 small areas (data zones) based on 7 socio-economic domains. These small areas are classified into five groups ranked from Quintile 1 (considered the most deprived) to Quintile 5 (considered least deprived), with equal populations in each quintile. Quintiles are assigned using the postcode declared by the applicant, applicants declaring invalid postcodes are classified as 'Not assigned' and are not reported.

SIMD is only defined for applicants domiciled in Scotland, therefore any applicants domiciled outside of Scotland cannot be assigned to an SIMD quintile and so are not reported for this measure.

SIMD is only reported for providers in Scotland. Application and entry rates by SIMD are reported in the 2015 End of Cycle Report and the 2016 cycle January deadline application rate report.

Statistics reported in the tables

All placed applicants

The number of applicants placed for entry into higher education at the provider through one of their choices, including any choices made through Extra, or via Adjustment, Clearing or RPA.

All placed applicants per 10,000 population

The number of total UK domiciled 18 year old placed applicants for entry into higher education at the provider divided by the number of UK 18 year olds in the population, multiplied by 10,000. This gives the number of 18 year olds, for every 10,000 in the population, that were placed at the provider through one of their choices, including any choices made through Extra, or via Adjustment, Clearing or RPA. It is an alternative way of expressing the entry rate to a provider. By referencing the underlying population this statistic shows how the number of placed applicants is changing in relation to the available pool of potential applicants and so gives the chance that somebody from the group will be placed at a provider.

This statistic is only reported for 18 year olds.

Average offer rate

The offer rate that you might expect if the predicted grades and subject choice of applicants were the only factors that influenced whether an applicant was made an offer by the provider. The average offer rate is calculated by dividing applicants according to their specific combination of grades (for A levels the best three predicted grades are used, for BTECs, International Baccalaureate and Scottish Highers and Advanced Highers, predicted grades along with any grades already achieved upon applying are used) and subject choice. For each combination the number of main scheme offers is divided by the number of main scheme applications, to give an overall offer rate. This is then multiplied by the number of applications made by the group for which the average offer rate is being calculated (for example POLAR3 quintile 1), to give an average number of offers for that group. These average number of offers are then added together across all combinations of predicted grade and subject and divided by the number of main scheme applications from the group to give the average offer rate.

The average offer rate does not attempt to control for any other factors that may play a part in the decision to make an offer, such as the subject of the qualifications studied, their relevance to a course, or the grade in each subject; higher numbers of A levels being studied; the exact profile of grades predicted; personal statements; teacher references; interviews; or any other criteria (such as work experience or portfolios) that may be part of the admissions decision.

This statistic is only reported for 18 year olds.

Contribution of group to the average offer rate

The way in which the average offer rate is defined means that the pattern of application and offers of a group (for example POLAR3 quintile 1) will always contribute, in part, to the average offer rate for that group. When this contribution is large, the average offer rate will mainly reflect the patterns for the group, meaning that the value of the average offer rate will be similar to the offer rate, the percentage point difference statistic will be small, and any real difference between the offer rate and what might be expected given the predicted grades and subject choices of the applicants will be difficult to detect.

Values of the contribution of group to the average offer rate range between 0 and 1. The closer the value is to 1 the greater the contribution a group makes to its own average offer rate.

This statistic is only reported for 18 year olds.

Placed June deadline applicants

An applicant who has been placed for entry into higher education at the provider through a June deadline application.

Placed June deadline applicants per 10,000 population

The number of UK domiciled 18 year old placed June deadline applicants at the provider divided by the number of UK 18 year olds in the population, multiplied by 10,000. This gives the number of 18 year olds, for every 10,000 in the population, that were placed at the provider through one of their June deadline applications. It is an alternative way of expressing the entry rate to a provider, but for placed June deadline applicants only. By referencing the underlying population this statistic shows how the number of placed June deadline applicants is changing in relation to the available pool of potential 18 year old applicants and so gives the chance that somebody from the group will be placed at a provider through a June deadline application.

This statistic is only reported for 18 year olds.

June deadline applications

An application (or choice) to a course in higher education to the provider that is made by the June 30 deadline. Each applicant can make up to five choices this way. The number of June deadline applications does not include choices made through the following routes: Clearing, Extra, Adjustment and RPAs. Applications made to October deadline courses received after the October deadline are not included in these statistics.

June deadline applicants

The number of applicants that made at least one application to the provider by the June 30 deadline.

June deadline applicants per 10,000 population

The number of UK domiciled 18 year old June deadline applicants to the provider divided by the number of UK 18 year olds in the population, multiplied by 10,000. This gives the number of 18 year olds, for every 10,000 in the population, who applied by the June 30 deadline. It is equivalent to the application rate. By referencing the underlying population this statistic shows how the number of June deadline applicants is changing in relation to the available pool of potential 18 year old applicants and so gives the chance that somebody from the group will apply to a provider by the June 30 deadline.

This statistic is only reported for 18 year olds.

Offers

An offer is defined as a provider's decision in response to an application to offer a place to an applicant, often subject to the applicant satisfying academic and/or other criteria, via a June deadline application (i.e. does not cover choices made through the following routes: Clearing, Extra, Adjustment and RPAs).

Offer rate

The number of offers made divided by the number of June deadline applications. This gives the proportion of all June deadline applications to the provider that received an offer.

Percentage point difference between offer rate and average offer rate

The offer rate minus the average offer rate.

The percentage point difference can be compared to the expected range of statistical variation resulting from the calculation of the average offer rate using the Average Offer Rate Lookup Table. Where the value of the percentage point difference lies outside of this range, the percentage point difference may be considered to represent a real difference between the offer rate and the average offer rate.

Other definitions

Age

This analysis uses country-specific age definitions that align with the cut off points for school and college cohorts within the different administrations of the UK. For England and Wales, ages are defined on the 31 August, for Northern Ireland on the 1 July and for Scotland on the 28 February the following year. Defining ages in this way matches the assignment of children to school cohorts. For applicants outside of the UK a cohort cut off of 31 August has been used.

Provider

A higher education provider - a university or college.

UK domiciled

Declared area of permanent residence within England, Northern Ireland, Scotland and Wales. Applicants from the Channel Islands and Isle of Man are not included.