

## W75 University of Wolverhampton

**Cycle years:** 2010 - 2015

**Cycle Reference Point:** End of Cycle

**Applicant coverage:** UK domiciled

**Reporting groups:** Sex, POLAR3, ethnic group

**Applicant statistics:** June deadline applicants, placed June deadline applicants, all placed applicants, June deadline applicants per 10,000 population, placed June deadline applicants per 10,000 population, all placed applicants per 10,000 population

**Application statistics:** June deadline applications, offers, offer rate, average offer rate, percentage point difference between offer rate and average offer rate, contribution of group to the average offer rate

**Non-disclosure controls:** To avoid the disclosure of information about any individual the following measures are taken

- Applicants, placed applicants, applications and offers are rounded to the nearest 5.
- Applicants/placed applicants per 10,000 population figures are reported as 0 if the applicant/placed applicant figures are rounded to 0.
- All statistics related to the offer rate are not reported when the number of applications for a group is less than 10. The percentage point difference between the offer rate and the average offer rate is not reported when the number of applications for a group is less than 50.
- Offer rates are reported as 0% if there are fewer than 5 offers, and 100% if the number of offers is within 5 of the number of applications. When the offer rate is reported as 0% or 100%, it is reported in italics.

### Contents:

18 year old applicants:	P.1
18 year old applications:	P.2
18 year old applicants by sex:	P.3
18 year old applications by sex:	P.4
18 year old applicants by POLAR3 quintile:	P.7
18 year old applications by POLAR3 quintile:	P.8
18 year old applicants by ethnic group:	P.11
18 year old applications by ethnic group:	P.12
Applicants (all ages):	P.15
Applications (all ages):	P.16
Applicants (all ages) by sex:	P.17
Applications (all ages) by sex:	P.18
Applicants (all ages) by POLAR3 quintile:	P.19
Applications (all ages) by POLAR3 quintile:	P.20
Applicants (all ages) by ethnic group:	P.21
Applications (all ages) by ethnic group:	P.22

## P.1 18 year old applicants

Statistic	2010	2011	2012	2013	2014	2015
June deadline applicants	6,525	7,250	7,725	7,585	7,040	7,060
Placed June deadline applicants	1,240	1,510	1,390	1,240	1,240	1,250
All placed applicants	1,545	1,735	1,665	1,490	1,570	1,575
June deadline applicants per 10,000 population	82.6	94.2	99.9	99.7	93.5	92.1
Placed June deadline applicants per 10,000	15.7	19.6	17.9	16.3	16.5	16.3
All placed applicants per 10,000 population	19.6	22.5	21.5	19.6	20.9	20.6

## P.2 18 year old applications

Statistic	2010	2011	2012	2013	2014	2015
June deadline applications	7,380	8,305	8,765	8,450	7,800	7,760
Offers	5,530	5,950	7,015	6,660	7,210	7,175
Offer rate	74.9%	71.6%	80.0%	78.8%	92.5%	92.5%

### P.3 18 year old applicants by sex

Statistic	Sex	2010	2011	2012	2013	2014	2015
June deadline applicants	Men	2,640	3,040	3,035	2,980	2,810	2,705
	Women	3,885	4,215	4,690	4,605	4,230	4,355
Placed June deadline applicants	Men	525	640	600	555	525	505
	Women	715	870	785	685	715	745
All placed applicants	Men	670	745	730	660	660	625
	Women	880	990	935	830	910	950
June deadline applicants per 10,000 population	Men	65.7	77.2	76.5	76.3	72.6	68.9
	Women	100.2	111.9	124.4	124.3	115.5	116.6
Placed June deadline applicants per 10,000 population	Men	13.1	16.3	15.2	14.3	13.6	12.9
	Women	18.4	23.0	20.9	18.4	19.5	19.9
All placed applicants per 10,000 population	Men	16.7	18.9	18.4	16.9	17.0	15.9
	Women	22.6	26.2	24.8	22.5	24.9	25.4

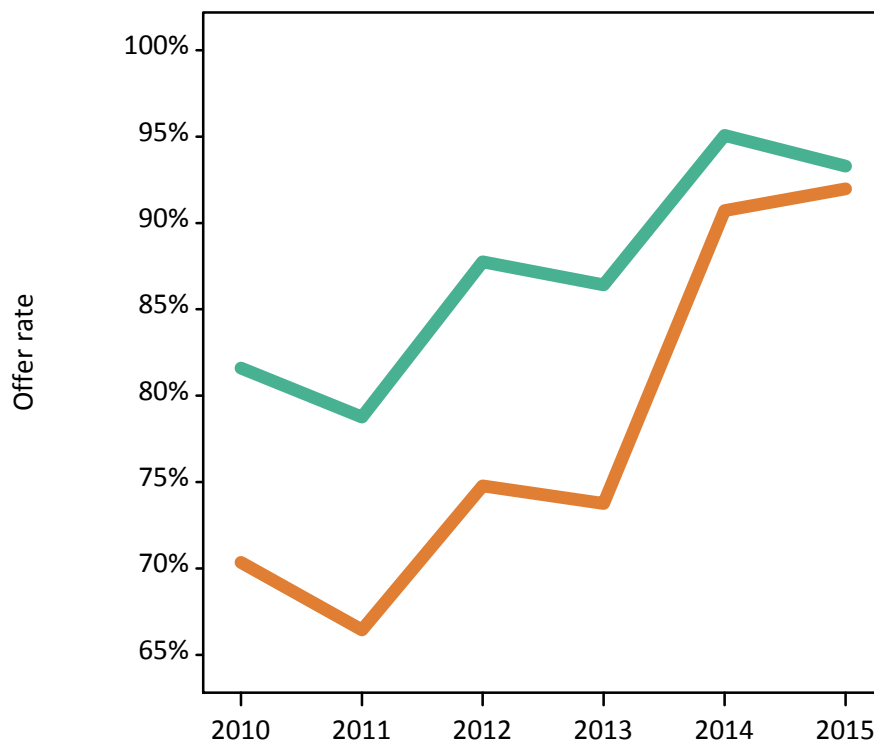
### P.4 18 year old applications by sex

Statistic	Sex	2010	2011	2012	2013	2014	2015
June deadline applications	Men	3,000	3,510	3,535	3,380	3,160	3,025
	Women	4,380	4,795	5,230	5,065	4,640	4,735
Offers	Men	2,450	2,765	3,100	2,920	3,005	2,820
	Women	3,080	3,185	3,910	3,735	4,210	4,355
Offer rate	Men	81.6%	78.8%	87.7%	86.4%	95.1%	93.3%
	Women	70.3%	66.4%	74.8%	73.8%	90.7%	92.0%
Average offer rate	Men	82.0%	79.6%	88.4%	86.8%	94.9%	93.3%
	Women	70.1%	65.9%	74.4%	73.5%	90.8%	92.0%
Percentage point difference between offer rate and average offer rate	Men	-0.4	-0.8	-0.6	-0.4	0.2	0.0
	Women	0.3	0.6	0.4	0.3	-0.1	-0.0
Contribution of group to the average offer rate	Men	0.631	0.632	0.608	0.629	0.635	0.618
	Women	0.748	0.731	0.735	0.753	0.752	0.756

### P.5 18 year old offer rate by sex

Note: The line for a group is not plotted when that group made fewer than 10 applications in any of the years from 2010-2015.

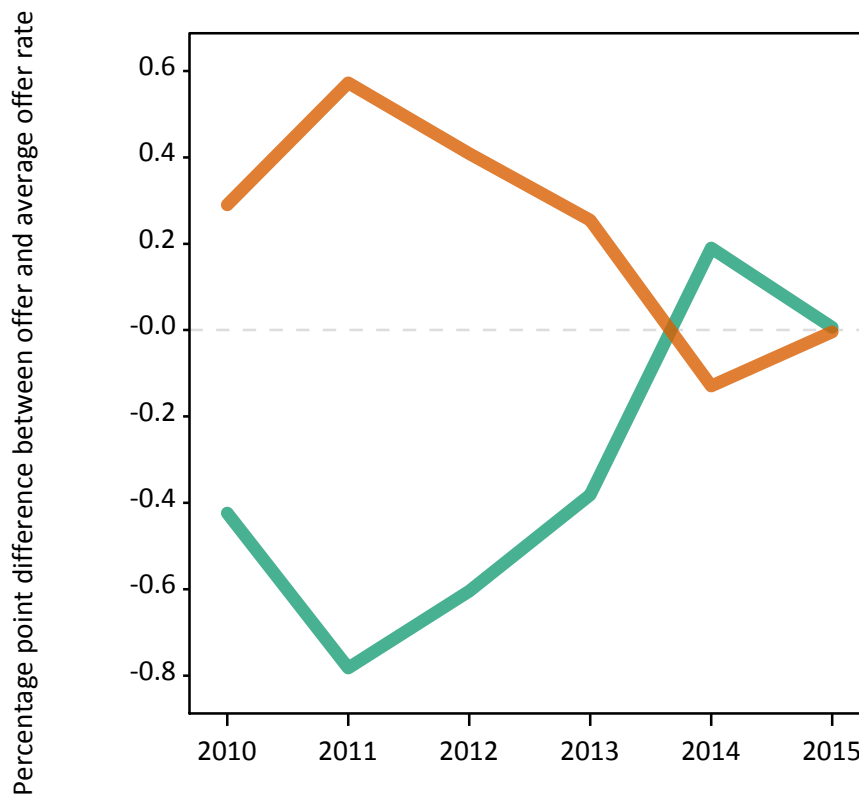
Men  
Women



### P.6 Percentage point difference between 18 year old offer rate and average offer rate by sex

Note: The line for a group is not plotted when that group made fewer than 50 applications in any of the years from 2010-2015.

Men  
Women



## P.7 18 year old applicants by POLAR3 quintile

Statistic	POLAR3 quintile	2010	2011	2012	2013	2014	2015
June deadline applicants	Quintile 1	1,150	1,315	1,390	1,445	1,345	1,255
	Quintile 2	1,710	1,960	2,050	2,035	1,940	2,060
	Quintile 3	1,585	1,690	1,830	1,820	1,700	1,745
	Quintile 4	1,015	1,150	1,160	1,140	980	1,025
	Quintile 5	1,055	1,135	1,280	1,130	1,065	965
Placed June deadline applicants	Quintile 1	265	305	285	270	270	260
	Quintile 2	375	470	400	325	360	380
	Quintile 3	295	375	330	325	320	345
	Quintile 4	145	180	170	160	135	135
	Quintile 5	160	175	200	155	150	130
All placed applicants	Quintile 1	310	350	330	315	330	310
	Quintile 2	465	520	490	390	475	485
	Quintile 3	370	435	405	405	400	435
	Quintile 4	180	205	205	200	170	175
	Quintile 5	220	215	235	180	195	170
June deadline applicants per 10,000 population	Quintile 1	77.6	91.4	97.5	103.8	96.6	89.6
	Quintile 2	111.3	130.2	136.8	138.2	132.7	138.8
	Quintile 3	99.7	109.8	118.6	119.2	113.0	113.5
	Quintile 4	63.7	73.3	73.0	72.8	63.7	65.5
	Quintile 5	62.2	68.4	76.2	68.5	65.2	57.5
Placed June deadline applicants per 10,000 population	Quintile 1	17.8	21.2	19.9	19.4	19.5	18.6
	Quintile 2	24.3	31.2	26.7	22.1	24.5	25.4
	Quintile 3	18.7	24.5	21.4	21.4	21.3	22.5
	Quintile 4	9.2	11.4	10.7	10.1	8.8	8.6
	Quintile 5	9.3	10.7	11.8	9.4	9.3	7.8
All placed applicants per 10,000 population	Quintile 1	21.0	24.3	23.0	22.5	23.6	22.1
	Quintile 2	30.1	34.7	32.7	26.5	32.5	32.6
	Quintile 3	23.4	28.4	26.2	26.5	26.7	28.2
	Quintile 4	11.3	13.2	12.8	12.7	10.9	11.2
	Quintile 5	12.9	13.1	13.9	11.0	12.0	10.2

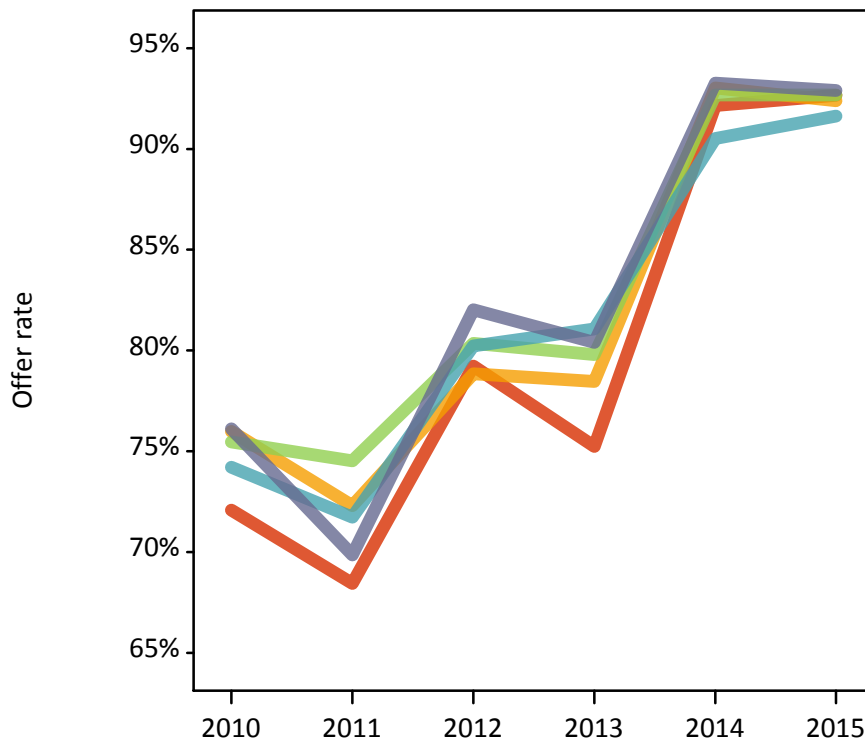
## P.8 18 year old applications by POLAR3 quintile

Statistic	POLAR3 quintile	2010	2011	2012	2013	2014	2015
June deadline applications	Quintile 1	1,355	1,560	1,620	1,640	1,490	1,405
	Quintile 2	1,965	2,255	2,365	2,295	2,195	2,300
	Quintile 3	1,795	1,955	2,085	2,050	1,885	1,925
	Quintile 4	1,105	1,275	1,260	1,230	1,075	1,085
	Quintile 5	1,145	1,245	1,420	1,220	1,145	1,030
Offers	Quintile 1	975	1,070	1,285	1,235	1,375	1,300
	Quintile 2	1,495	1,630	1,865	1,800	2,045	2,125
	Quintile 3	1,355	1,455	1,675	1,635	1,745	1,785
	Quintile 4	820	915	1,010	1,000	975	995
	Quintile 5	875	870	1,165	980	1,065	955
Offer rate	Quintile 1	72.1%	68.4%	79.2%	75.2%	92.1%	92.7%
	Quintile 2	76.0%	72.3%	78.8%	78.5%	93.0%	92.4%
	Quintile 3	75.5%	74.5%	80.4%	79.8%	92.7%	92.7%
	Quintile 4	74.2%	71.7%	80.2%	81.1%	90.5%	91.6%
	Quintile 5	76.1%	69.9%	82.0%	80.4%	93.3%	92.9%
Average offer rate	Quintile 1	72.7%	68.9%	78.4%	75.6%	92.7%	92.7%
	Quintile 2	74.9%	71.5%	78.8%	78.2%	92.7%	92.6%
	Quintile 3	75.6%	73.8%	81.1%	80.1%	92.5%	92.6%
	Quintile 4	75.0%	73.1%	80.0%	80.3%	91.3%	91.6%
	Quintile 5	76.3%	70.5%	82.1%	80.8%	92.8%	92.7%
Percentage point difference between offer rate and average offer rate	Quintile 1	-0.6	-0.5	0.8	-0.3	-0.5	-0.0
	Quintile 2	1.1	0.8	0.0	0.3	0.3	-0.2
	Quintile 3	-0.1	0.8	-0.8	-0.3	0.2	0.1
	Quintile 4	-0.8	-1.4	0.2	0.8	-0.7	0.1
	Quintile 5	-0.2	-0.7	-0.1	-0.4	0.5	0.2
Contribution of group to the average offer rate	Quintile 1	0.277	0.274	0.269	0.283	0.280	0.273
	Quintile 2	0.349	0.346	0.338	0.348	0.352	0.371
	Quintile 3	0.327	0.313	0.309	0.321	0.308	0.332
	Quintile 4	0.250	0.248	0.238	0.249	0.239	0.249
	Quintile 5	0.270	0.247	0.264	0.243	0.254	0.243

### P.9 18 year old offer rate by POLAR3 quintile

Note: The line for a group is not plotted when that group made fewer than 10 applications in any of the years from 2010-2015.

- Quintile 1
- Quintile 2
- Quintile 3
- Quintile 4
- Quintile 5



### P.10 Percentage point difference between 18 year old offer rate and average offer rate by POLAR3 quintile

Note: The line for a group is not plotted when that group made fewer than 50 applications in any of the years from 2010-2015.

- Quintile 1
- Quintile 2
- Quintile 3
- Quintile 4
- Quintile 5



## P.11 18 year old applicants by ethnic group

Statistic	Ethnic group	2010	2011	2012	2013	2014	2015
June deadline applicants	Asian	1,280	1,555	1,830	1,720	1,685	1,720
	Black	370	465	550	650	600	655
	Mixed	240	265	305	285	270	290
	White	4,570	4,895	4,945	4,840	4,360	4,270
	Other	40	50	70	70	95	95
Placed June deadline applicants	Asian	265	340	325	265	250	270
	Black	50	85	85	95	100	135
	Mixed	60	60	65	45	45	60
	White	855	1,010	895	825	820	765
	Other	5	10	10	10	20	20
All placed applicants	Asian	385	415	430	345	370	380
	Black	85	105	115	150	150	195
	Mixed	70	65	75	55	70	70
	White	995	1,120	1,015	925	950	900
	Other	10	15	15	15	25	25
June deadline applicants per 10,000 population	Asian	207.2	246.6	282.7	260.5	248.3	242.8
	Black	140.6	170.1	194.6	218.3	198.3	205.2
	Mixed	103.6	109.0	116.7	104.7	94.5	94.7
	White	68.2	75.6	76.6	76.9	70.6	68.5
	Other	54.6	60.5	79.1	77.2	101.0	99.7
Placed June deadline applicants per 10,000 population	Asian	43.0	54.3	50.3	39.9	36.9	37.9
	Black	19.5	30.7	30.9	32.7	32.7	42.1
	Mixed	25.5	23.9	24.6	16.6	16.3	19.1
	White	12.7	15.6	13.9	13.1	13.3	12.3
	Other	7.8	12.3	11.3	8.8	19.3	19.7
All placed applicants per 10,000 population	Asian	62.6	65.5	66.1	52.0	54.3	53.4
	Black	31.7	39.1	40.5	50.2	49.8	61.0
	Mixed	29.4	27.2	28.0	20.0	24.3	23.0
	White	14.9	17.3	15.7	14.7	15.4	14.4
	Other	10.4	16.0	17.0	15.4	26.9	26.0



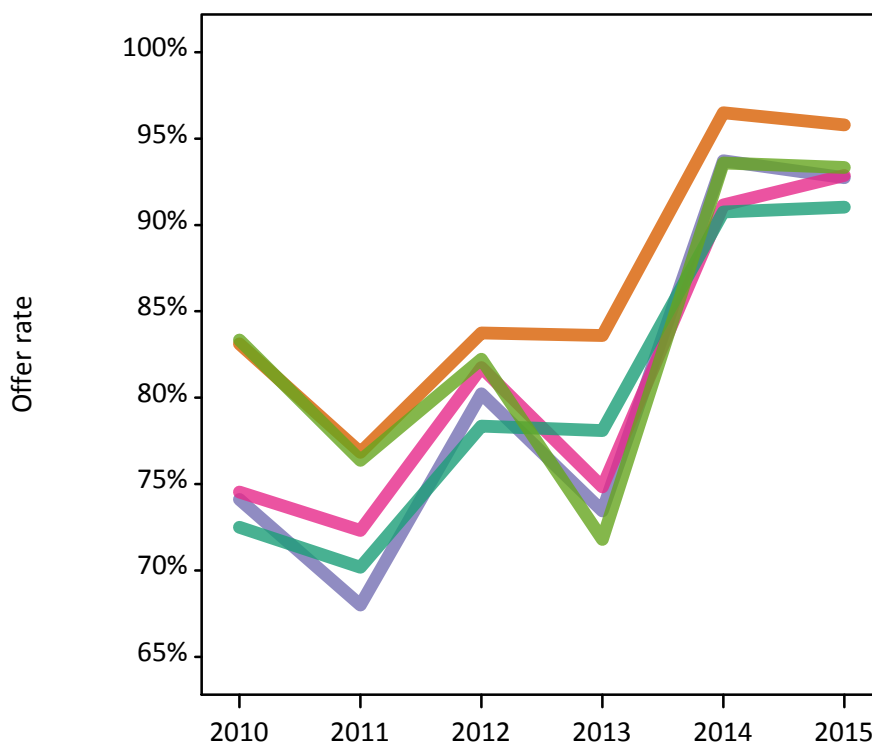
## P.12 18 year old applications by ethnic group

Statistic	Ethnic group	2010	2011	2012	2013	2014	2015
June deadline applications	Asian	1,490	1,830	2,135	1,970	1,910	1,905
	Black	390	505	600	680	620	700
	Mixed	265	305	335	315	295	320
	White	5,160	5,580	5,575	5,380	4,830	4,695
	Other	50	55	90	80	110	105
Offers	Asian	1,240	1,405	1,790	1,645	1,845	1,825
	Black	290	340	485	500	580	650
	Mixed	200	220	275	235	270	300
	White	3,740	3,915	4,365	4,200	4,385	4,275
	Other	40	40	75	55	100	100
Offer rate	Asian	83.1%	76.8%	83.7%	83.6%	96.5%	95.8%
	Black	74.1%	68.0%	80.2%	73.5%	93.7%	92.7%
	Mixed	74.5%	72.3%	81.7%	74.8%	91.2%	92.9%
	White	72.5%	70.2%	78.3%	78.1%	90.7%	91.0%
	Other	83.3%	76.4%	82.2%	71.8%	93.6%	93.3%
Average offer rate	Asian	83.7%	77.6%	85.5%	83.8%	95.9%	95.6%
	Black	78.9%	72.8%	81.7%	75.6%	94.8%	94.6%
	Mixed	73.6%	73.2%	80.6%	75.6%	91.9%	92.1%
	White	72.0%	69.4%	77.6%	77.7%	90.8%	90.9%
	Other	85.4%	76.3%	84.2%	73.2%	95.8%	95.2%
Percentage point difference between offer rate and average offer rate	Asian	-0.6	-0.7	-1.7	-0.2	0.6	0.2
	Black	-4.8	-4.9	-1.5	-2.1	-1.1	-1.8
	Mixed	1.0	-0.9	1.2	-0.8	-0.7	0.7
	White	0.5	0.8	0.8	0.4	-0.0	0.2
	Other	N/A	0.1	-2.0	-1.4	-2.2	-1.9
Contribution of group to the average offer rate	Asian	0.417	0.413	0.422	0.400	0.401	0.406
	Black	0.174	0.163	0.166	0.184	0.173	0.197
	Mixed	0.131	0.147	0.136	0.127	0.110	0.149
	White	0.780	0.749	0.725	0.719	0.705	0.697
	Other	0.108	0.154	0.115	0.128	0.111	0.113

### P.13 18 year old offer rate by ethnic group

Note: The line for a group is not plotted when that group made fewer than 10 applications in any of the years from 2010-2015.

- Asian
- Black
- Mixed
- White
- Other



### P.14 Percentage point difference between 18 year old offer rate and average offer rate by ethnic group

Note: The line for a group is not plotted when that group made fewer than 50 applications in any of the years from 2010-2015.

- Asian
- Black
- Mixed
- White
- Other



### P.15 Applicants (all ages)

Statistic	2010	2011	2012	2013	2014	2015
June deadline applicants	15,865	17,670	18,145	18,125	17,620	17,400
Placed June deadline applicants	3,210	3,920	3,560	3,410	3,800	3,760
All placed applicants	4,180	4,560	4,515	4,200	4,725	4,790

### P.16 Applications (all ages)

Statistic	2010	2011	2012	2013	2014	2015
June deadline applications	18,650	20,920	21,205	20,815	20,290	19,705
Offers	11,245	12,210	14,360	13,515	16,915	16,790
Offer rate	60.3%	58.4%	67.7%	64.9%	83.3%	85.2%

### P.17 Applicants (all ages) by sex

Statistic	Sex	2010	2011	2012	2013	2014	2015
June deadline applicants	Men	6,180	7,220	7,035	6,705	6,325	5,960
	Women	9,680	10,450	11,115	11,420	11,300	11,440
Placed June deadline applicants	Men	1,305	1,685	1,565	1,425	1,445	1,285
	Women	1,905	2,240	1,995	1,985	2,355	2,475
All placed applicants	Men	1,825	2,005	2,060	1,780	1,820	1,680
	Women	2,355	2,555	2,460	2,420	2,905	3,110

### P.18 Applications (all ages) by sex

Statistic	Sex	2010	2011	2012	2013	2014	2015
June deadline applications	Men	7,250	8,530	8,265	7,745	7,335	6,755
	Women	11,400	12,390	12,940	13,070	12,960	12,950
Offers	Men	5,015	5,610	6,550	5,970	6,550	5,935
	Women	6,225	6,595	7,810	7,540	10,365	10,850
Offer rate	Men	69.2%	65.8%	79.3%	77.1%	89.3%	87.9%
	Women	54.6%	53.2%	60.3%	57.7%	80.0%	83.8%

### P.19 Applicants (all ages) by POLAR3 quintile

Statistic	POLAR3 quintile	2010	2011	2012	2013	2014	2015
June deadline applicants	Quintile 1	2,950	3,390	3,535	3,565	3,645	3,465
	Quintile 2	4,525	4,950	5,090	5,095	5,110	5,140
	Quintile 3	3,870	4,200	4,365	4,380	4,195	4,180
	Quintile 4	2,180	2,500	2,455	2,540	2,320	2,310
	Quintile 5	2,320	2,600	2,660	2,515	2,325	2,265
Placed June deadline applicants	Quintile 1	675	830	770	775	900	850
	Quintile 2	1,000	1,200	1,040	965	1,150	1,105
	Quintile 3	795	960	880	835	925	965
	Quintile 4	355	475	405	425	395	415
	Quintile 5	385	450	465	405	430	410
All placed applicants	Quintile 1	840	940	935	920	1,060	1,045
	Quintile 2	1,275	1,390	1,335	1,200	1,470	1,450
	Quintile 3	1,045	1,115	1,135	1,050	1,150	1,230
	Quintile 4	470	565	510	530	495	525
	Quintile 5	540	545	590	495	550	530

### P.20 Applications (all ages) by POLAR3 quintile

Statistic	POLAR3 quintile	2010	2011	2012	2013	2014	2015
June deadline applications	Quintile 1	3,575	4,150	4,220	4,160	4,330	4,050
	Quintile 2	5,395	5,945	6,020	5,945	5,910	5,910
	Quintile 3	4,560	4,985	5,175	5,060	4,830	4,725
	Quintile 4	2,475	2,840	2,740	2,815	2,590	2,490
	Quintile 5	2,620	2,970	3,005	2,800	2,600	2,480
Offers	Quintile 1	2,025	2,310	2,680	2,580	3,535	3,400
	Quintile 2	3,245	3,490	4,030	3,825	4,915	4,975
	Quintile 3	2,815	2,980	3,580	3,290	4,110	4,105
	Quintile 4	1,515	1,700	1,900	1,890	2,140	2,150
	Quintile 5	1,625	1,710	2,145	1,905	2,190	2,120
Offer rate	Quintile 1	56.7%	55.7%	63.5%	62.0%	81.6%	83.9%
	Quintile 2	60.2%	58.7%	67.0%	64.4%	83.2%	84.2%
	Quintile 3	61.7%	59.7%	69.1%	65.0%	85.1%	86.9%
	Quintile 4	61.2%	59.9%	69.4%	67.2%	82.6%	86.3%
	Quintile 5	62.1%	57.6%	71.5%	68.1%	84.3%	85.4%

## P.21 Applicants (all ages) by ethnic group

Statistic	Ethnic group	2010	2011	2012	2013	2014	2015
June deadline applicants	Asian	3,120	3,795	4,080	3,970	3,805	3,785
	Black	2,220	2,605	2,795	2,830	2,905	3,020
	Mixed	680	710	795	795	830	855
	White	9,620	10,285	10,125	10,175	9,720	9,330
	Other	125	165	260	255	260	285
Placed June deadline applicants	Asian	635	860	825	700	775	705
	Black	350	545	450	515	645	745
	Mixed	155	175	150	160	175	215
	White	2,030	2,285	2,075	1,980	2,120	2,005
	Other	20	35	45	40	60	65
All placed applicants	Asian	970	1,050	1,085	920	1,070	1,000
	Black	520	650	610	720	850	1,025
	Mixed	205	200	180	190	230	270
	White	2,385	2,565	2,380	2,265	2,460	2,370
	Other	35	40	70	55	80	85

## P.22 Applications (all ages) by ethnic group

Statistic	Ethnic group	2010	2011	2012	2013	2014	2015
June deadline applications	Asian	3,710	4,630	4,910	4,660	4,395	4,270
	Black	2,630	3,020	3,205	3,220	3,310	3,435
	Mixed	805	835	920	905	940	980
	White	11,240	12,110	11,745	11,615	11,235	10,565
	Other	140	200	305	285	300	315
Offers	Asian	2,640	3,100	3,830	3,515	4,005	3,920
	Black	1,145	1,305	1,645	1,620	2,545	2,730
	Mixed	455	480	595	555	755	835
	White	6,830	7,130	7,990	7,565	9,250	8,925
	Other	95	120	215	185	265	270
Offer rate	Asian	71.1%	67.0%	78.0%	75.5%	91.2%	91.8%
	Black	43.5%	43.2%	51.3%	50.2%	76.9%	79.5%
	Mixed	56.7%	57.7%	64.9%	61.5%	80.7%	85.0%
	White	60.8%	58.9%	68.1%	65.1%	82.3%	84.5%
	Other	66.0%	60.1%	70.6%	65.4%	88.1%	86.6%

## Technical Notes and Definitions

### UCAS undergraduate scheme

#### Adjustment

Adjustment allows applicants who have met and exceeded the terms of their conditional firm offer to seek and find a place at another provider whilst keeping their place at their original firm choice provider.

#### Clearing

Clearing is a route for applicants that are not placed and holding no offers to find a place on courses with vacancies.

#### Cycle year

The UCAS application cycle which runs from September to October the following year. For example the 2015 cycle runs from September 2014 through to October 2015.

#### End of cycle

The point in the cycle to which the numbers in this report refer, and the point at which the cycle is closed such that no more applications or offers can be made, and no more applicants can be placed. Numbers reported at the end of cycle exclude information on a small number of applicants who cancelled during the cycle.

#### Extra

Applicants who are unsuccessful in obtaining an offer or decline all offers may be eligible to apply through Extra, where they can apply to one further course at a time. Extra operates from 25 February until early July. It provides applicants who are eligible the possibility of obtaining an offer before exam results are published and Clearing starts.

#### June 30 deadline

The deadline for main scheme applications. Applicants who apply after this date will go directly into Clearing.

#### Record of Prior Acceptance (RPA)

RPA is an acceptance route used when a provider informs UCAS of applicants it has accepted outside of the normal application process (e.g. individuals who have applied directly to the provider).

### Reporting groups

#### Ethnic group

High level grouping of ethnic origin as declared by the applicant: 'White', 'Black', 'Asian', 'Mixed', 'Other', 'Unknown'. Applicants who declare themselves as 'Unknown' ethnic origin are not reported in these tables, but are included in the associated csv data file.

#### POLAR3 quintile

Developed by HEFCE, POLAR3 classifies small areas across the UK into five groups according to their level of young participation in Higher Education. Each of these groups represents around 20 per cent of young people and is ranked from Quintile 1 (areas with the lowest young participation rates, considered as the most disadvantaged) to Quintile 5 (highest young participation rates, considered most advantaged). POLAR3 is based on the participation rates of young people between 2005 and 2009 who entered Higher Education between 2005-06 and 2010-11, therefore is most suitable for applicants aged 19 and under. These groups are assigned using the postcode declared by the applicant at the time of their application. If a UK postcode is invalid, considered unsafe for measurement or there is no link to Census geography possible then the applicant is not assigned to a quintile. Applicants with no POLAR3 quintile are not reported.

#### Sex

Sex as declared by the applicant.

### **SIMD quintile**

Scottish index of multiple deprivation (SIMD) for 2012 identifies small area concentrations of multiple deprivation across all of Scotland, providing a relative measure of deprivation amongst 6505 small areas (data zones) based on 7 socio-economic domains. These small areas are classified into five groups ranked from Quintile 1 (considered the most deprived) to Quintile 5 (considered least deprived), with equal populations in each quintile. Quintiles are assigned using the postcode declared by the applicant, applicants declaring invalid postcodes are classified as 'Not assigned' and are not reported.

SIMD is only defined for applicants domiciled in Scotland, therefore any applicants domiciled outside of Scotland cannot be assigned to an SIMD quintile and so are not reported for this measure.

SIMD is only reported for providers in Scotland. Application and entry rates by SIMD are reported in the 2015 End of Cycle Report and the 2016 cycle January deadline application rate report.

### **Statistics reported in the tables**

#### **All placed applicants**

The number of applicants placed for entry into higher education at the provider through one of their choices, including any choices made through Extra, or via Adjustment, Clearing or RPA.

#### **All placed applicants per 10,000 population**

The number of total UK domiciled 18 year old placed applicants for entry into higher education at the provider divided by the number of UK 18 year olds in the population, multiplied by 10,000. This gives the number of 18 year olds, for every 10,000 in the population, that were placed at the provider through one of their choices, including any choices made through Extra, or via Adjustment, Clearing or RPA. It is an alternative way of expressing the entry rate to a provider. By referencing the underlying population this statistic shows how the number of placed applicants is changing in relation to the available pool of potential applicants and so gives the chance that somebody from the group will be placed at a provider.

This statistic is only reported for 18 year olds.

#### **Average offer rate**

The offer rate that you might expect if the predicted grades and subject choice of applicants were the only factors that influenced whether an applicant was made an offer by the provider. The average offer rate is calculated by dividing applicants according to their specific combination of grades (for A levels the best three predicted grades are used, for BTECs, International Baccalaureate and Scottish Highers and Advanced Highers, predicted grades along with any grades already achieved upon applying are used) and subject choice. For each combination the number of main scheme offers is divided by the number of main scheme applications, to give an overall offer rate. This is then multiplied by the number of applications made by the group for which the average offer rate is being calculated (for example POLAR3 quintile 1), to give an average number of offers for that group. These average number of offers are then added together across all combinations of predicted grade and subject and divided by the number of main scheme applications from the group to give the average offer rate.

The average offer rate does not attempt to control for any other factors that may play a part in the decision to make an offer, such as the subject of the qualifications studied, their relevance to a course, or the grade in each subject; higher numbers of A levels being studied; the exact profile of grades predicted; personal statements; teacher references; interviews; or any other criteria (such as work experience or portfolios) that may be part of the admissions decision.

This statistic is only reported for 18 year olds.



### Contribution of group to the average offer rate

The way in which the average offer rate is defined means that the pattern of application and offers of a group (for example POLAR3 quintile 1) will always contribute, in part, to the average offer rate for that group. When this contribution is large, the average offer rate will mainly reflect the patterns for the group, meaning that the value of the average offer rate will be similar to the offer rate, the percentage point difference statistic will be small, and any real difference between the offer rate and what might be expected given the predicted grades and subject choices of the applicants will be difficult to detect.

Values of the contribution of group to the average offer rate range between 0 and 1. The closer the value is to 1 the greater the contribution a group makes to its own average offer rate.

This statistic is only reported for 18 year olds.

### Placed June deadline applicants

An applicant who has been placed for entry into higher education at the provider through a June deadline application.

### Placed June deadline applicants per 10,000 population

The number of UK domiciled 18 year old placed June deadline applicants at the provider divided by the number of UK 18 year olds in the population, multiplied by 10,000. This gives the number of 18 year olds, for every 10,000 in the population, that were placed at the provider through one of their June deadline applications. It is an alternative way of expressing the entry rate to a provider, but for placed June deadline applicants only. By referencing the underlying population this statistic shows how the number of placed June deadline applicants is changing in relation to the available pool of potential 18 year old applicants and so gives the chance that somebody from the group will be placed at a provider through a June deadline application.

This statistic is only reported for 18 year olds.

### June deadline applications

An application (or choice) to a course in higher education to the provider that is made by the June 30 deadline. Each applicant can make up to five choices this way. The number of June deadline applications does not include choices made through the following routes: Clearing, Extra, Adjustment and RPAs. Applications made to October deadline courses received after the October deadline are not included in these statistics.

### June deadline applicants

The number of applicants that made at least one application to the provider by the June 30 deadline.

### June deadline applicants per 10,000 population

The number of UK domiciled 18 year old June deadline applicants to the provider divided by the number of UK 18 year olds in the population, multiplied by 10,000. This gives the number of 18 year olds, for every 10,000 in the population, who applied by the June 30 deadline. It is equivalent to the application rate. By referencing the underlying population this statistic shows how the number of June deadline applicants is changing in relation to the available pool of potential 18 year old applicants and so gives the chance that somebody from the group will apply to a provider by the June 30 deadline.

This statistic is only reported for 18 year olds.

### Offers

An offer is defined as a provider's decision in response to an application to offer a place to an applicant, often subject to the applicant satisfying academic and/or other criteria, via a June deadline application (i.e. does not cover choices made through the following routes: Clearing, Extra, Adjustment and RPAs).

### Offer rate

The number of offers made divided by the number of June deadline applications. This gives the proportion of all June deadline applications to the provider that received an offer.

### Percentage point difference between offer rate and average offer rate

The offer rate minus the average offer rate.

The percentage point difference can be compared to the expected range of statistical variation resulting from the calculation of the average offer rate using the Average Offer Rate Lookup Table. Where the value of the percentage point difference lies outside of this range, the percentage point difference may be considered to represent a real difference between the offer rate and the average offer rate.

### Other definitions

#### Age

This analysis uses country-specific age definitions that align with the cut off points for school and college cohorts within the different administrations of the UK. For England and Wales, ages are defined on the 31 August, for Northern Ireland on the 1 July and for Scotland on the 28 February the following year. Defining ages in this way matches the assignment of children to school cohorts. For applicants outside of the UK a cohort cut off of 31 August has been used.

#### Provider

A higher education provider - a university or college.

#### UK domiciled

Declared area of permanent residence within England, Northern Ireland, Scotland and Wales. Applicants from the Channel Islands and Isle of Man are not included.