

Y50 University of York

Cycle years: 2010 - 2015

Cycle Reference Point: End of Cycle

Applicant coverage: UK domiciled

Reporting groups: Sex, POLAR3, ethnic group

Applicant statistics: June deadline applicants, placed June deadline applicants, all placed applicants, June deadline applicants per 10,000 population, placed June deadline applicants per 10,000 population, all placed applicants per 10,000 population

Application statistics: June deadline applications, offers, offer rate, average offer rate, percentage point difference between offer rate and average offer rate, contribution of group to the average offer rate

Non-disclosure controls: To avoid the disclosure of information about any individual the following measures are taken

- Applicants, placed applicants, applications and offers are rounded to the nearest 5.
- Applicants/placed applicants per 10,000 population figures are reported as 0 if the applicant/placed applicant figures are rounded to 0.
- All statistics related to the offer rate are not reported when the number of applications for a group is less than 10. The percentage point difference between the offer rate and the average offer rate is not reported when the number of applications for a group is less than 50.
- Offer rates are reported as 0% if there are fewer than 5 offers, and 100% if the number of offers is within 5 of the number of applications. When the offer rate is reported as 0% or 100%, it is reported in italics.

Contents:

18 year old applicants:	P.1
18 year old applications:	P.2
18 year old applicants by sex:	P.3
18 year old applications by sex:	P.4
18 year old applicants by POLAR3 quintile:	P.7
18 year old applications by POLAR3 quintile:	P.8
18 year old applicants by ethnic group:	P.11
18 year old applications by ethnic group:	P.12
Applicants (all ages):	P.15
Applications (all ages):	P.16
Applicants (all ages) by sex:	P.17
Applications (all ages) by sex:	P.18
Applicants (all ages) by POLAR3 quintile:	P.19
Applications (all ages) by POLAR3 quintile:	P.20
Applicants (all ages) by ethnic group:	P.21
Applications (all ages) by ethnic group:	P.22

P.1 18 year old applicants

Statistic	2010	2011	2012	2013	2014	2015
June deadline applicants	14,075	12,750	13,455	13,900	13,785	14,300
Placed June deadline applicants	2,035	1,910	2,065	2,150	2,020	2,155
All placed applicants	2,140	1,990	2,265	2,475	2,335	2,565
June deadline applicants per 10,000 population	178.3	165.6	173.9	182.7	183.0	186.6
Placed June deadline applicants per 10,000	25.8	24.8	26.7	28.2	26.8	28.1
All placed applicants per 10,000 population	27.1	25.9	29.3	32.5	31.0	33.5

P.2 18 year old applications

Statistic	2010	2011	2012	2013	2014	2015
June deadline applications	14,300	12,910	13,650	14,085	13,935	14,460
Offers	9,830	9,300	10,205	10,680	10,920	11,360
Offer rate	68.7%	72.0%	74.8%	75.8%	78.4%	78.5%

P.3 18 year old applicants by sex

Statistic	Sex	2010	2011	2012	2013	2014	2015
June deadline applicants	Men	6,240	5,705	5,935	5,805	5,570	5,485
	Women	7,835	7,045	7,515	8,095	8,215	8,810
Placed June deadline applicants	Men	945	915	905	1,000	910	940
	Women	1,085	1,000	1,160	1,150	1,115	1,215
All placed applicants	Men	990	950	1,005	1,170	1,065	1,155
	Women	1,150	1,040	1,260	1,305	1,265	1,410
June deadline applicants per 10,000 population	Men	155.4	145.0	149.7	148.7	143.9	139.8
	Women	202.0	187.1	199.4	218.5	224.5	235.8
Placed June deadline applicants per 10,000 population	Men	23.6	23.2	22.8	25.6	23.5	24.0
	Women	28.0	26.5	30.8	31.0	30.4	32.5
All placed applicants per 10,000 population	Men	24.6	24.2	25.4	30.0	27.5	29.4
	Women	29.6	27.6	33.4	35.2	34.6	37.8

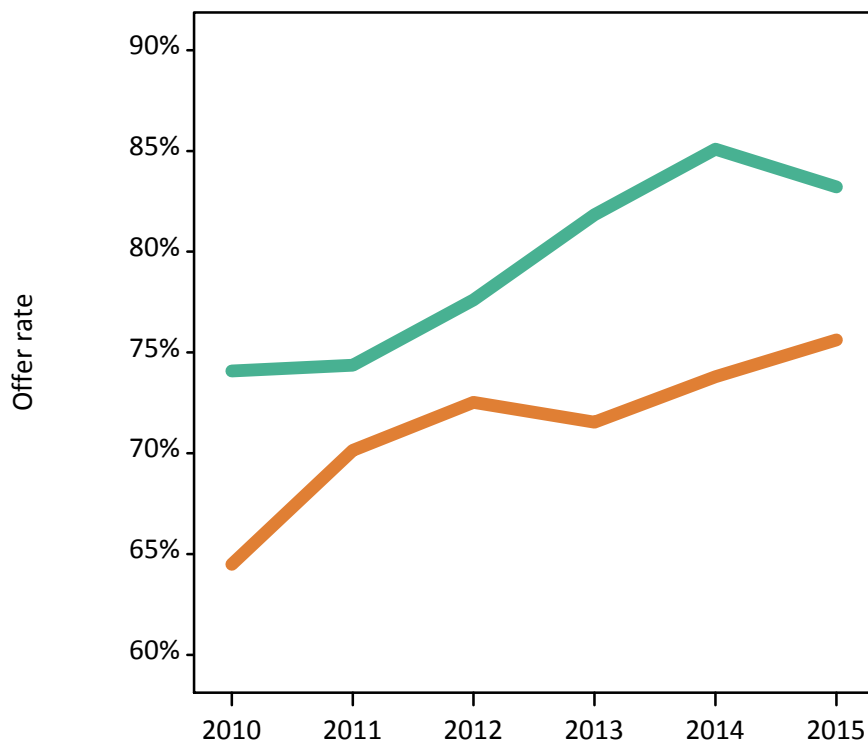
P.4 18 year old applications by sex

Statistic	Sex	2010	2011	2012	2013	2014	2015
June deadline applications	Men	6,325	5,780	6,035	5,880	5,645	5,560
	Women	7,970	7,130	7,615	8,205	8,290	8,905
Offers	Men	4,685	4,300	4,685	4,810	4,800	4,625
	Women	5,140	5,000	5,520	5,870	6,120	6,735
Offer rate	Men	74.1%	74.4%	77.6%	81.8%	85.1%	83.2%
	Women	64.5%	70.1%	72.5%	71.5%	73.8%	75.6%
Average offer rate	Men	74.5%	75.1%	78.2%	82.4%	85.3%	83.5%
	Women	64.1%	69.5%	72.1%	71.2%	73.6%	75.5%
Percentage point difference between offer rate and average offer rate	Men	-0.5	-0.8	-0.5	-0.5	-0.2	-0.3
	Women	0.4	0.6	0.4	0.4	0.2	0.2
Contribution of group to the average offer rate	Men	0.590	0.596	0.593	0.579	0.559	0.550
	Women	0.674	0.672	0.678	0.699	0.700	0.719

P.5 18 year old offer rate by sex

Note: The line for a group is not plotted when that group made fewer than 10 applications in any of the years from 2010-2015.

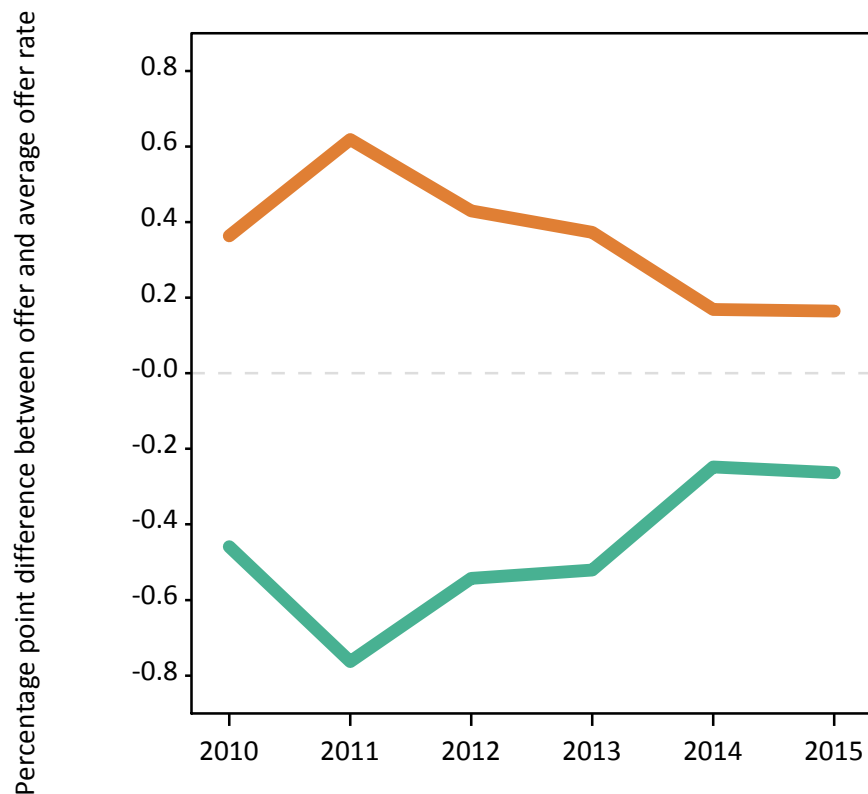
Men
Women



P.6 Percentage point difference between 18 year old offer rate and average offer rate by sex

Note: The line for a group is not plotted when that group made fewer than 50 applications in any of the years from 2010-2015.

Men
Women



P.7 18 year old applicants by POLAR3 quintile

Statistic	POLAR3 quintile	2010	2011	2012	2013	2014	2015
June deadline applicants	Quintile 1	1,130	1,025	1,075	1,210	1,280	1,400
	Quintile 2	1,695	1,510	1,600	1,770	1,810	1,900
	Quintile 3	2,375	2,120	2,210	2,395	2,355	2,490
	Quintile 4	3,475	3,095	3,220	3,285	3,165	3,385
	Quintile 5	5,380	4,970	5,320	5,230	5,155	5,080
Placed June deadline applicants	Quintile 1	130	125	125	140	165	170
	Quintile 2	230	210	240	235	235	275
	Quintile 3	335	285	335	405	350	370
	Quintile 4	535	480	545	525	500	580
	Quintile 5	810	805	815	845	775	755
All placed applicants	Quintile 1	135	135	140	160	190	200
	Quintile 2	235	215	270	265	260	315
	Quintile 3	350	295	370	460	395	440
	Quintile 4	555	500	580	595	580	665
	Quintile 5	860	845	910	990	905	930
June deadline applicants per 10,000 population	Quintile 1	76.3	71.3	75.5	86.7	92.1	100.1
	Quintile 2	110.3	100.4	106.6	120.0	123.6	128.0
	Quintile 3	149.5	137.9	143.2	157.1	156.4	162.1
	Quintile 4	218.1	197.7	203.0	210.2	205.5	216.2
	Quintile 5	317.4	300.3	316.7	316.2	316.0	303.4
Placed June deadline applicants per 10,000 population	Quintile 1	8.6	8.8	8.9	10.1	12.0	12.3
	Quintile 2	14.8	13.9	16.1	15.8	15.9	18.4
	Quintile 3	20.9	18.5	21.8	26.5	23.1	24.0
	Quintile 4	33.5	30.8	34.2	33.4	32.3	36.9
	Quintile 5	47.7	48.8	48.6	51.1	47.5	45.0
All placed applicants per 10,000 population	Quintile 1	9.2	9.5	9.7	11.6	13.6	14.4
	Quintile 2	15.3	14.4	17.9	17.8	17.8	21.1
	Quintile 3	21.9	19.0	23.8	30.0	26.3	28.7
	Quintile 4	34.9	31.9	36.6	38.1	37.8	42.5
	Quintile 5	50.6	51.0	54.1	59.8	55.4	55.7

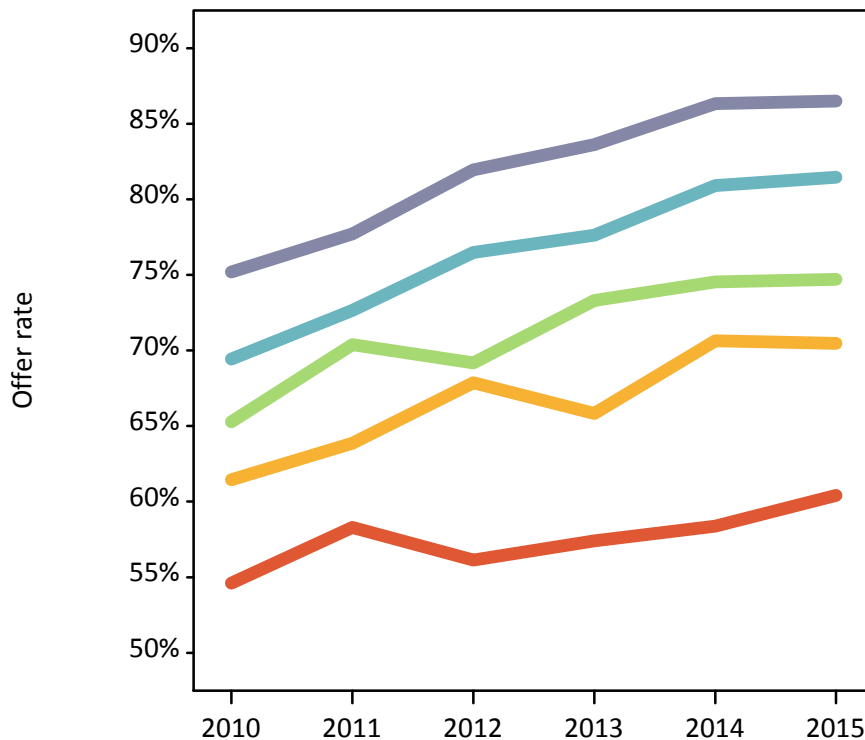
P.8 18 year old applications by POLAR3 quintile

Statistic	POLAR3 quintile	2010	2011	2012	2013	2014	2015
June deadline applications	Quintile 1	1,160	1,045	1,100	1,235	1,300	1,415
	Quintile 2	1,740	1,530	1,630	1,805	1,820	1,930
	Quintile 3	2,435	2,145	2,250	2,435	2,385	2,520
	Quintile 4	3,510	3,135	3,265	3,325	3,210	3,430
	Quintile 5	5,440	5,030	5,375	5,275	5,195	5,120
Offers	Quintile 1	635	610	620	710	760	855
	Quintile 2	1,070	975	1,105	1,185	1,285	1,360
	Quintile 3	1,590	1,510	1,555	1,785	1,775	1,880
	Quintile 4	2,435	2,275	2,500	2,580	2,595	2,795
	Quintile 5	4,090	3,910	4,405	4,410	4,485	4,430
Offer rate	Quintile 1	54.6%	58.3%	56.1%	57.4%	58.4%	60.4%
	Quintile 2	61.4%	63.9%	67.9%	65.8%	70.6%	70.5%
	Quintile 3	65.3%	70.4%	69.2%	73.3%	74.5%	74.7%
	Quintile 4	69.4%	72.6%	76.5%	77.6%	80.9%	81.5%
	Quintile 5	75.2%	77.7%	82.0%	83.6%	86.3%	86.5%
Average offer rate	Quintile 1	57.3%	61.0%	60.5%	60.4%	61.3%	62.3%
	Quintile 2	63.3%	66.0%	68.9%	68.0%	71.2%	70.8%
	Quintile 3	66.2%	70.6%	71.4%	73.6%	75.0%	76.0%
	Quintile 4	69.5%	72.9%	75.8%	77.0%	81.0%	81.1%
	Quintile 5	73.6%	76.3%	80.3%	82.5%	85.1%	85.5%
Percentage point difference between offer rate and average offer rate	Quintile 1	-2.7	-2.7	-4.4	-3.0	-2.9	-1.9
	Quintile 2	-1.9	-2.1	-1.0	-2.2	-0.5	-0.3
	Quintile 3	-0.9	-0.3	-2.2	-0.3	-0.5	-1.3
	Quintile 4	-0.1	-0.2	0.7	0.7	-0.1	0.4
	Quintile 5	1.6	1.4	1.7	1.2	1.2	1.0
Contribution of group to the average offer rate	Quintile 1	0.164	0.169	0.166	0.179	0.192	0.198
	Quintile 2	0.187	0.188	0.177	0.188	0.187	0.197
	Quintile 3	0.217	0.220	0.217	0.216	0.218	0.226
	Quintile 4	0.286	0.283	0.278	0.271	0.272	0.278
	Quintile 5	0.440	0.450	0.453	0.435	0.439	0.423

P.9 18 year old offer rate by POLAR3 quintile

Note: The line for a group is not plotted when that group made fewer than 10 applications in any of the years from 2010-2015.

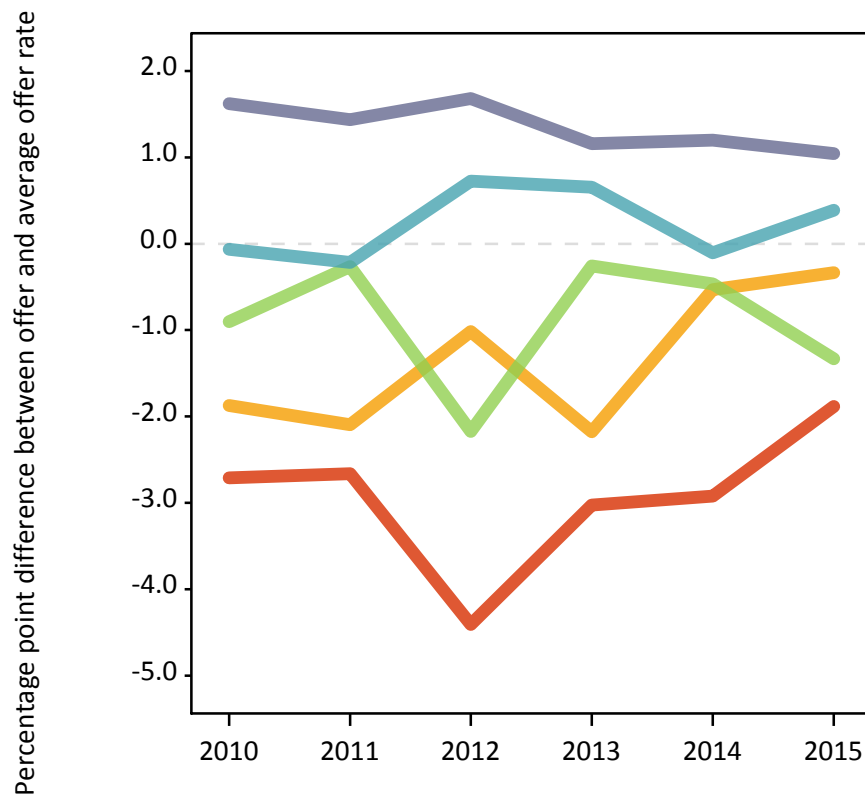
- Quintile 1
- Quintile 2
- Quintile 3
- Quintile 4
- Quintile 5



P.10 Percentage point difference between 18 year old offer rate and average offer rate by POLAR3 quintile

Note: The line for a group is not plotted when that group made fewer than 50 applications in any of the years from 2010-2015.

- Quintile 1
- Quintile 2
- Quintile 3
- Quintile 4
- Quintile 5



P.11 18 year old applicants by ethnic group

Statistic	Ethnic group	2010	2011	2012	2013	2014	2015
June deadline applicants	Asian	515	545	530	625	695	610
	Black	125	155	145	205	225	220
	Mixed	425	425	420	455	490	510
	White	12,815	11,470	12,210	12,480	12,255	12,795
	Other	55	50	45	70	75	60
Placed June deadline applicants	Asian	50	60	55	85	85	70
	Black	15	15	15	30	35	30
	Mixed	60	65	55	70	65	65
	White	1,880	1,750	1,915	1,935	1,810	1,960
	Other	10	10	5	10	15	10
All placed applicants	Asian	65	70	70	115	115	115
	Black	20	20	25	45	50	45
	Mixed	65	65	65	85	85	95
	White	1,960	1,815	2,080	2,195	2,055	2,280
	Other	10	10	10	15	20	10
June deadline applicants per 10,000 population	Asian	83.5	86.2	81.7	94.5	102.3	85.9
	Black	47.0	57.1	50.8	68.7	73.6	69.8
	Mixed	183.0	175.1	161.2	169.0	170.0	165.8
	White	191.1	177.1	189.1	198.3	198.6	205.3
	Other	74.0	63.0	50.9	75.0	82.7	60.2
Placed June deadline applicants per 10,000 population	Asian	8.4	9.4	8.2	12.7	12.7	10.2
	Black	6.1	5.5	6.0	10.8	10.9	9.1
	Mixed	25.9	26.4	20.7	26.6	23.3	21.7
	White	28.0	27.1	29.7	30.8	29.4	31.5
	Other	10.4	9.9	5.7	11.0	15.0	8.3
All placed applicants per 10,000 population	Asian	10.5	10.9	10.8	17.3	17.0	16.0
	Black	8.0	6.9	8.2	15.5	16.2	14.1
	Mixed	28.1	27.2	24.6	32.2	28.8	30.2
	White	29.2	28.0	32.2	34.9	33.3	36.6
	Other	10.4	11.1	9.0	17.6	22.6	11.4

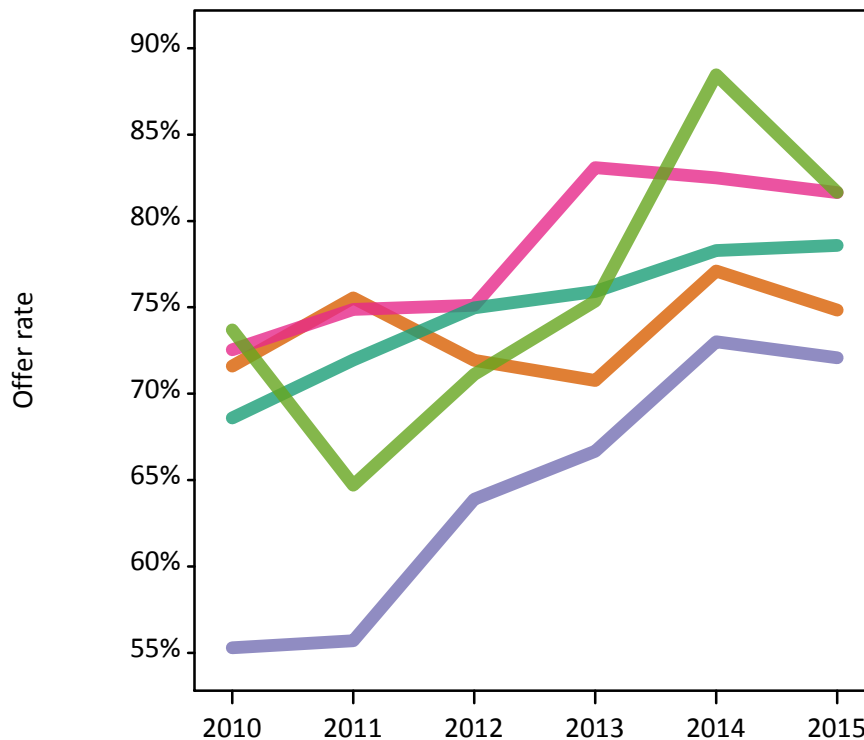
P.12 18 year old applications by ethnic group

Statistic	Ethnic group	2010	2011	2012	2013	2014	2015
June deadline applications	Asian	520	545	530	625	700	615
	Black	125	160	145	205	225	220
	Mixed	425	425	420	460	490	510
	White	13,025	11,620	12,395	12,655	12,390	12,945
	Other	55	50	45	70	80	60
Offers	Asian	375	410	380	445	540	460
	Black	70	90	90	135	165	160
	Mixed	310	320	315	385	405	420
	White	8,935	8,360	9,295	9,605	9,700	10,175
	Other	40	35	30	50	70	50
Offer rate	Asian	71.6%	75.6%	71.9%	70.8%	77.1%	74.8%
	Black	55.3%	55.7%	63.9%	66.7%	73.0%	72.1%
	Mixed	72.5%	74.9%	75.1%	83.1%	82.5%	81.6%
	White	68.6%	72.0%	75.0%	75.9%	78.3%	78.6%
	Other	73.7%	64.7%	71.1%	75.4%	88.5%	81.7%
Average offer rate	Asian	72.2%	74.3%	73.4%	72.5%	76.2%	75.4%
	Black	57.8%	61.4%	64.4%	67.7%	72.6%	72.4%
	Mixed	69.8%	73.5%	74.7%	81.8%	81.4%	81.7%
	White	68.6%	72.0%	74.9%	75.9%	78.4%	78.6%
	Other	69.5%	73.2%	71.9%	78.0%	85.7%	82.4%
Percentage point difference between offer rate and average offer rate	Asian	-0.6	1.3	-1.5	-1.7	1.0	-0.6
	Black	-2.5	-5.7	-0.5	-1.0	0.4	-0.3
	Mixed	2.7	1.4	0.4	1.3	1.1	-0.0
	White	-0.1	-0.0	0.1	0.1	-0.1	0.0
	Other	4.2	-8.5	N/A	-2.7	2.8	-0.7
Contribution of group to the average offer rate	Asian	0.113	0.136	0.115	0.130	0.130	0.116
	Black	0.094	0.086	0.086	0.097	0.087	0.090
	Mixed	0.080	0.079	0.097	0.089	0.092	0.089
	White	0.918	0.908	0.916	0.907	0.899	0.903
	Other	0.068	0.080	0.096	0.071	0.048	0.055

P.13 18 year old offer rate by ethnic group

Note: The line for a group is not plotted when that group made fewer than 10 applications in any of the years from 2010-2015.

- Asian
- Black
- Mixed
- White
- Other



P.14 Percentage point difference between 18 year old offer rate and average offer rate by ethnic group

Note: The line for a group is not plotted when that group made fewer than 50 applications in any of the years from 2010-2015.

- Asian
- Black
- Mixed
- White
- Other



P.15 Applicants (all ages)

Statistic	2010	2011	2012	2013	2014	2015
June deadline applicants	20,120	18,770	18,810	20,250	20,345	20,890
Placed June deadline applicants	3,060	2,855	2,760	2,915	2,885	2,965
All placed applicants	3,250	3,015	3,065	3,390	3,360	3,580

P.16 Applications (all ages)

Statistic	2010	2011	2012	2013	2014	2015
June deadline applications	20,680	19,155	19,185	20,660	20,730	21,260
Offers	12,550	12,110	12,440	13,360	13,905	14,315
Offer rate	60.7%	63.2%	64.8%	64.7%	67.1%	67.3%

P.17 Applicants (all ages) by sex

Statistic	Sex	2010	2011	2012	2013	2014	2015
June deadline applicants	Men	8,580	8,085	7,885	8,010	7,795	7,675
	Women	11,535	10,685	10,925	12,240	12,550	13,215
Placed June deadline applicants	Men	1,385	1,330	1,205	1,340	1,275	1,285
	Women	1,675	1,525	1,555	1,575	1,610	1,675
All placed applicants	Men	1,465	1,405	1,365	1,575	1,515	1,615
	Women	1,785	1,610	1,700	1,815	1,850	1,965

P.18 Applications (all ages) by sex

Statistic	Sex	2010	2011	2012	2013	2014	2015
June deadline applications	Men	8,795	8,245	8,050	8,150	7,945	7,810
	Women	11,885	10,910	11,135	12,510	12,785	13,445
Offers	Men	5,930	5,565	5,715	6,040	6,110	5,935
	Women	6,620	6,545	6,725	7,320	7,790	8,380
Offer rate	Men	67.4%	67.5%	71.0%	74.1%	76.9%	76.0%
	Women	55.7%	60.0%	60.4%	58.5%	61.0%	62.3%

P.19 Applicants (all ages) by POLAR3 quintile

Statistic	POLAR3 quintile	2010	2011	2012	2013	2014	2015
June deadline applicants	Quintile 1	2,045	1,975	2,025	2,285	2,410	2,685
	Quintile 2	2,690	2,395	2,485	2,825	2,920	3,045
	Quintile 3	3,385	3,185	3,180	3,505	3,525	3,640
	Quintile 4	4,765	4,390	4,275	4,565	4,525	4,725
	Quintile 5	7,180	6,770	6,795	7,045	6,925	6,730
Placed June deadline applicants	Quintile 1	240	225	215	215	255	285
	Quintile 2	385	355	345	340	360	390
	Quintile 3	510	455	455	525	495	520
	Quintile 4	785	705	705	695	710	755
	Quintile 5	1,135	1,105	1,035	1,130	1,055	995
All placed applicants	Quintile 1	260	245	240	245	290	340
	Quintile 2	405	370	390	390	410	460
	Quintile 3	535	475	505	600	575	635
	Quintile 4	830	745	760	805	830	890
	Quintile 5	1,210	1,170	1,165	1,335	1,255	1,245

P.20 Applications (all ages) by POLAR3 quintile

Statistic	POLAR3 quintile	2010	2011	2012	2013	2014	2015
June deadline applications	Quintile 1	2,125	2,030	2,080	2,335	2,450	2,730
	Quintile 2	2,795	2,440	2,545	2,905	2,980	3,105
	Quintile 3	3,505	3,260	3,250	3,585	3,620	3,710
	Quintile 4	4,895	4,465	4,355	4,650	4,615	4,820
	Quintile 5	7,310	6,900	6,910	7,155	7,025	6,830
Offers	Quintile 1	905	875	870	955	1,060	1,230
	Quintile 2	1,420	1,305	1,390	1,505	1,670	1,770
	Quintile 3	2,020	1,990	1,910	2,230	2,280	2,370
	Quintile 4	3,085	2,940	2,985	3,205	3,295	3,470
	Quintile 5	5,095	4,960	5,245	5,445	5,570	5,425
Offer rate	Quintile 1	42.7%	43.0%	41.8%	40.9%	43.3%	45.1%
	Quintile 2	50.8%	53.5%	54.7%	51.9%	56.1%	57.1%
	Quintile 3	57.7%	61.1%	58.8%	62.2%	63.1%	64.0%
	Quintile 4	63.0%	65.8%	68.6%	69.0%	71.4%	72.0%
	Quintile 5	69.7%	71.9%	75.9%	76.1%	79.3%	79.4%

P.21 Applicants (all ages) by ethnic group

Statistic	Ethnic group	2010	2011	2012	2013	2014	2015
June deadline applicants	Asian	840	830	825	970	1,080	1,045
	Black	425	455	475	545	535	625
	Mixed	620	610	565	660	700	755
	White	17,925	16,610	16,705	17,830	17,790	18,170
	Other	95	95	85	115	140	120
Placed June deadline applicants	Asian	105	85	75	125	125	115
	Black	40	40	45	55	60	65
	Mixed	90	90	65	95	90	95
	White	2,780	2,600	2,535	2,600	2,560	2,640
	Other	15	15	10	15	25	10
All placed applicants	Asian	120	105	100	165	175	185
	Black	50	50	60	75	90	95
	Mixed	100	95	80	120	120	140
	White	2,925	2,720	2,775	2,965	2,920	3,095
	Other	15	15	10	25	35	20

P.22 Applications (all ages) by ethnic group

Statistic	Ethnic group	2010	2011	2012	2013	2014	2015
June deadline applications	Asian	850	835	830	985	1,100	1,060
	Black	435	465	495	555	555	640
	Mixed	630	615	570	665	705	760
	White	18,455	16,965	17,040	18,200	18,120	18,495
	Other	95	95	85	115	145	120
Offers	Asian	545	545	510	615	740	675
	Black	120	170	165	205	250	270
	Mixed	405	420	390	480	525	565
	White	11,295	10,790	11,205	11,890	12,220	12,585
	Other	55	60	45	70	95	75
Offer rate	Asian	63.9%	65.1%	61.6%	62.4%	67.1%	63.6%
	Black	27.8%	36.1%	33.7%	36.8%	44.9%	41.7%
	Mixed	64.5%	68.7%	68.2%	71.8%	74.8%	74.2%
	White	61.2%	63.6%	65.7%	65.3%	67.4%	68.1%
	Other	58.8%	64.9%	56.6%	62.3%	67.8%	62.8%

Technical Notes and Definitions

UCAS undergraduate scheme

Adjustment

Adjustment allows applicants who have met and exceeded the terms of their conditional firm offer to seek and find a place at another provider whilst keeping their place at their original firm choice provider.

Clearing

Clearing is a route for applicants that are not placed and holding no offers to find a place on courses with vacancies.

Cycle year

The UCAS application cycle which runs from September to October the following year. For example the 2015 cycle runs from September 2014 through to October 2015.

End of cycle

The point in the cycle to which the numbers in this report refer, and the point at which the cycle is closed such that no more applications or offers can be made, and no more applicants can be placed. Numbers reported at the end of cycle exclude information on a small number of applicants who cancelled during the cycle.

Extra

Applicants who are unsuccessful in obtaining an offer or decline all offers may be eligible to apply through Extra, where they can apply to one further course at a time. Extra operates from 25 February until early July. It provides applicants who are eligible the possibility of obtaining an offer before exam results are published and Clearing starts.

June 30 deadline

The deadline for main scheme applications. Applicants who apply after this date will go directly into Clearing.

Record of Prior Acceptance (RPA)

RPA is an acceptance route used when a provider informs UCAS of applicants it has accepted outside of the normal application process (e.g. individuals who have applied directly to the provider).

Reporting groups

Ethnic group

High level grouping of ethnic origin as declared by the applicant: 'White', 'Black', 'Asian', 'Mixed', 'Other', 'Unknown'. Applicants who declare themselves as 'Unknown' ethnic origin are not reported in these tables, but are included in the associated csv data file.

POLAR3 quintile

Developed by HEFCE, POLAR3 classifies small areas across the UK into five groups according to their level of young participation in Higher Education. Each of these groups represents around 20 per cent of young people and is ranked from Quintile 1 (areas with the lowest young participation rates, considered as the most disadvantaged) to Quintile 5 (highest young participation rates, considered most advantaged). POLAR3 is based on the participation rates of young people between 2005 and 2009 who entered Higher Education between 2005-06 and 2010-11, therefore is most suitable for applicants aged 19 and under. These groups are assigned using the postcode declared by the applicant at the time of their application. If a UK postcode is invalid, considered unsafe for measurement or there is no link to Census geography possible then the applicant is not assigned to a quintile. Applicants with no POLAR3 quintile are not reported.

Sex

Sex as declared by the applicant.

SIMD quintile

Scottish index of multiple deprivation (SIMD) for 2012 identifies small area concentrations of multiple deprivation across all of Scotland, providing a relative measure of deprivation amongst 6505 small areas (data zones) based on 7 socio-economic domains. These small areas are classified into five groups ranked from Quintile 1 (considered the most deprived) to Quintile 5 (considered least deprived), with equal populations in each quintile. Quintiles are assigned using the postcode declared by the applicant, applicants declaring invalid postcodes are classified as 'Not assigned' and are not reported.

SIMD is only defined for applicants domiciled in Scotland, therefore any applicants domiciled outside of Scotland cannot be assigned to an SIMD quintile and so are not reported for this measure.

SIMD is only reported for providers in Scotland. Application and entry rates by SIMD are reported in the 2015 End of Cycle Report and the 2016 cycle January deadline application rate report.

Statistics reported in the tables

All placed applicants

The number of applicants placed for entry into higher education at the provider through one of their choices, including any choices made through Extra, or via Adjustment, Clearing or RPA.

All placed applicants per 10,000 population

The number of total UK domiciled 18 year old placed applicants for entry into higher education at the provider divided by the number of UK 18 year olds in the population, multiplied by 10,000. This gives the number of 18 year olds, for every 10,000 in the population, that were placed at the provider through one of their choices, including any choices made through Extra, or via Adjustment, Clearing or RPA. It is an alternative way of expressing the entry rate to a provider. By referencing the underlying population this statistic shows how the number of placed applicants is changing in relation to the available pool of potential applicants and so gives the chance that somebody from the group will be placed at a provider.

This statistic is only reported for 18 year olds.

Average offer rate

The offer rate that you might expect if the predicted grades and subject choice of applicants were the only factors that influenced whether an applicant was made an offer by the provider. The average offer rate is calculated by dividing applicants according to their specific combination of grades (for A levels the best three predicted grades are used, for BTECs, International Baccalaureate and Scottish Highers and Advanced Highers, predicted grades along with any grades already achieved upon applying are used) and subject choice. For each combination the number of main scheme offers is divided by the number of main scheme applications, to give an overall offer rate. This is then multiplied by the number of applications made by the group for which the average offer rate is being calculated (for example POLAR3 quintile 1), to give an average number of offers for that group. These average number of offers are then added together across all combinations of predicted grade and subject and divided by the number of main scheme applications from the group to give the average offer rate.

The average offer rate does not attempt to control for any other factors that may play a part in the decision to make an offer, such as the subject of the qualifications studied, their relevance to a course, or the grade in each subject; higher numbers of A levels being studied; the exact profile of grades predicted; personal statements; teacher references; interviews; or any other criteria (such as work experience or portfolios) that may be part of the admissions decision.

This statistic is only reported for 18 year olds.

Contribution of group to the average offer rate

The way in which the average offer rate is defined means that the pattern of application and offers of a group (for example POLAR3 quintile 1) will always contribute, in part, to the average offer rate for that group. When this contribution is large, the average offer rate will mainly reflect the patterns for the group, meaning that the value of the average offer rate will be similar to the offer rate, the percentage point difference statistic will be small, and any real difference between the offer rate and what might be expected given the predicted grades and subject choices of the applicants will be difficult to detect.

Values of the contribution of group to the average offer rate range between 0 and 1. The closer the value is to 1 the greater the contribution a group makes to its own average offer rate.

This statistic is only reported for 18 year olds.

Placed June deadline applicants

An applicant who has been placed for entry into higher education at the provider through a June deadline application.

Placed June deadline applicants per 10,000 population

The number of UK domiciled 18 year old placed June deadline applicants at the provider divided by the number of UK 18 year olds in the population, multiplied by 10,000. This gives the number of 18 year olds, for every 10,000 in the population, that were placed at the provider through one of their June deadline applications. It is an alternative way of expressing the entry rate to a provider, but for placed June deadline applicants only. By referencing the underlying population this statistic shows how the number of placed June deadline applicants is changing in relation to the available pool of potential 18 year old applicants and so gives the chance that somebody from the group will be placed at a provider through a June deadline application.

This statistic is only reported for 18 year olds.

June deadline applications

An application (or choice) to a course in higher education to the provider that is made by the June 30 deadline. Each applicant can make up to five choices this way. The number of June deadline applications does not include choices made through the following routes: Clearing, Extra, Adjustment and RPAs. Applications made to October deadline courses received after the October deadline are not included in these statistics.

June deadline applicants

The number of applicants that made at least one application to the provider by the June 30 deadline.

June deadline applicants per 10,000 population

The number of UK domiciled 18 year old June deadline applicants to the provider divided by the number of UK 18 year olds in the population, multiplied by 10,000. This gives the number of 18 year olds, for every 10,000 in the population, who applied by the June 30 deadline. It is equivalent to the application rate. By referencing the underlying population this statistic shows how the number of June deadline applicants is changing in relation to the available pool of potential 18 year old applicants and so gives the chance that somebody from the group will apply to a provider by the June 30 deadline.

This statistic is only reported for 18 year olds.

Offers

An offer is defined as a provider's decision in response to an application to offer a place to an applicant, often subject to the applicant satisfying academic and/or other criteria, via a June deadline application (i.e. does not cover choices made through the following routes: Clearing, Extra, Adjustment and RPAs).

Offer rate

The number of offers made divided by the number of June deadline applications. This gives the proportion of all June deadline applications to the provider that received an offer.

Percentage point difference between offer rate and average offer rate

The offer rate minus the average offer rate.

The percentage point difference can be compared to the expected range of statistical variation resulting from the calculation of the average offer rate using the Average Offer Rate Lookup Table. Where the value of the percentage point difference lies outside of this range, the percentage point difference may be considered to represent a real difference between the offer rate and the average offer rate.

Other definitions

Age

This analysis uses country-specific age definitions that align with the cut off points for school and college cohorts within the different administrations of the UK. For England and Wales, ages are defined on the 31 August, for Northern Ireland on the 1 July and for Scotland on the 28 February the following year. Defining ages in this way matches the assignment of children to school cohorts. For applicants outside of the UK a cohort cut off of 31 August has been used.

Provider

A higher education provider - a university or college.

UK domiciled

Declared area of permanent residence within England, Northern Ireland, Scotland and Wales. Applicants from the Channel Islands and Isle of Man are not included.