

## UK providers

**Cycle years:** 2010 - 2015

**Cycle Reference Point:** End of Cycle

**Applicant coverage:** UK domiciled

**Reporting groups:** Sex, POLAR3, ethnic group

**Applicant statistics:** June deadline applicants, placed June deadline applicants, all placed applicants, June deadline applicants per 10,000 population, placed June deadline applicants per 10,000 population, all placed applicants per 10,000 population

**Application statistics:** June deadline applications, offers, offer rate, average offer rate, percentage point difference between offer rate and average offer rate, contribution of group to the average offer rate

**Non-disclosure controls:** To avoid the disclosure of information about any individual the following measures are taken

- Applicants, placed applicants, applications and offers are rounded to the nearest 5.
- Applicants/placed applicants per 10,000 population figures are reported as 0 if the applicant/placed applicant figures are rounded to 0.
- All statistics related to the offer rate are not reported when the number of applications for a group is less than 10. The percentage point difference between the offer rate and the average offer rate is not reported when the number of applications for a group is less than 50.
- Offer rates are reported as 0% if there are fewer than 5 offers, and 100% if the number of offers is within 5 of the number of applications. When the offer rate is reported as 0% or 100%, it is reported in italics.

## Contents:

18 year old applicants:	P.1
18 year old applications:	P.2
18 year old applicants by sex:	P.3
18 year old applications by sex:	P.4
18 year old applicants by POLAR3 quintile:	P.7
18 year old applications by POLAR3 quintile:	P.8
18 year old applicants by ethnic group:	P.11
18 year old applications by ethnic group:	P.12
Applicants (all ages):	P.15
Applications (all ages):	P.16
Applicants (all ages) by sex:	P.17
Applications (all ages) by sex:	P.18
Applicants (all ages) by POLAR3 quintile:	P.19
Applications (all ages) by POLAR3 quintile:	P.20
Applicants (all ages) by ethnic group:	P.21
Applications (all ages) by ethnic group:	P.22

## P.1 18 year old applicants

Statistic	2010	2011	2012	2013	2014	2015
June deadline applicants	268,355	267,400	257,410	259,395	265,965	275,860
Placed June deadline applicants	189,100	189,715	184,110	191,965	195,205	203,945
All placed applicants	213,100	217,640	212,060	219,305	224,525	235,320
June deadline applicants per 10,000 population	3,398.9	3,472.2	3,327.8	3,408.7	3,531.3	3,600.6
Placed June deadline applicants per 10,000	2,395.1	2,463.5	2,380.2	2,522.6	2,591.8	2,662.0
All placed applicants per 10,000 population	2,699.1	2,826.1	2,741.6	2,881.9	2,981.1	3,071.5

## P.2 18 year old applications

Statistic	2010	2011	2012	2013	2014	2015
June deadline applications	1,241,905	1,256,765	1,205,485	1,211,720	1,246,925	1,294,480
Offers	868,435	852,305	855,420	903,480	946,440	991,605
Offer rate	69.9%	67.8%	71.0%	74.6%	75.9%	76.6%

### P.3 18 year old applicants by sex

Statistic	Sex	2010	2011	2012	2013	2014	2015
June deadline applicants	Men	119,370	119,030	113,140	114,500	117,505	119,905
	Women	148,985	148,365	144,270	144,890	148,460	155,955
Placed June deadline applicants	Men	84,545	85,360	81,440	85,610	86,750	89,185
	Women	104,555	104,355	102,670	106,355	108,455	114,760
All placed applicants	Men	95,490	97,765	94,000	97,595	99,825	102,880
	Women	117,610	119,875	118,060	121,715	124,705	132,440
June deadline applicants per 10,000 population	Men	2,972.0	3,024.8	2,852.9	2,932.9	3,035.4	3,055.4
	Women	3,841.0	3,939.7	3,827.6	3,910.0	4,055.7	4,173.2
Placed June deadline applicants per 10,000 population	Men	2,105.0	2,169.1	2,053.6	2,192.9	2,240.9	2,272.6
	Women	2,695.6	2,771.1	2,723.9	2,870.0	2,962.8	3,070.8
All placed applicants per 10,000 population	Men	2,377.5	2,484.4	2,370.3	2,499.8	2,578.6	2,621.6
	Women	3,032.1	3,183.1	3,132.2	3,284.5	3,406.8	3,544.0

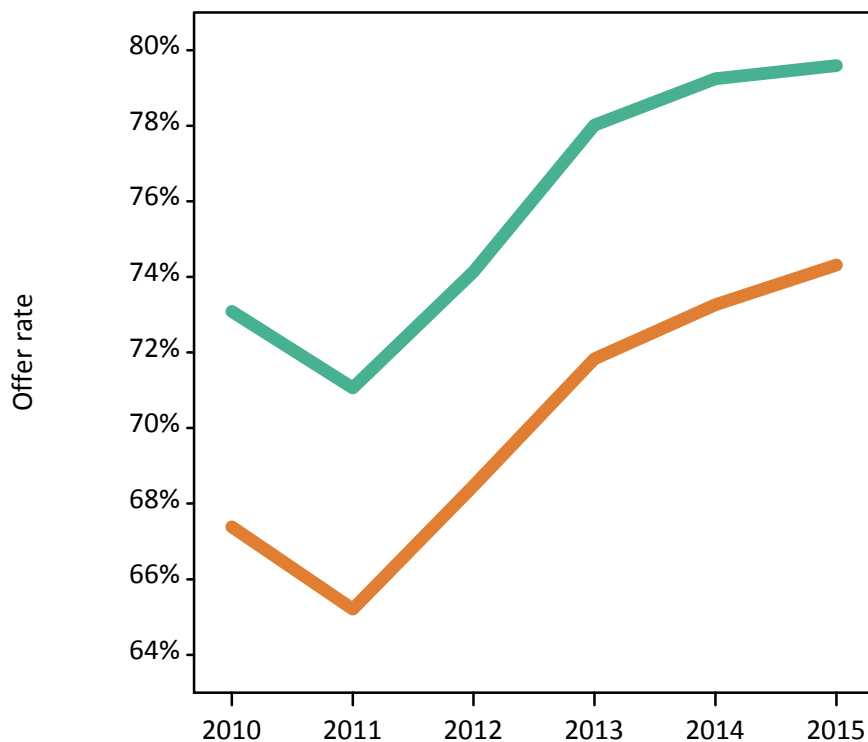
### P.4 18 year old applications by sex

Statistic	Sex	2010	2011	2012	2013	2014	2015
June deadline applications	Men	553,830	559,775	529,390	534,620	550,245	561,715
	Women	688,075	696,995	676,095	677,095	696,680	732,765
Offers	Men	404,765	397,775	392,490	417,095	436,040	447,065
	Women	463,670	454,530	462,930	486,380	510,400	544,540
Offer rate	Men	73.1%	71.1%	74.1%	78.0%	79.2%	79.6%
	Women	67.4%	65.2%	68.5%	71.8%	73.3%	74.3%
Average offer rate	Men	73.4%	71.5%	74.6%	78.4%	79.6%	80.0%
	Women	67.1%	64.9%	68.1%	71.5%	73.0%	74.0%
Percentage point difference between offer rate and average offer rate	Men	-0.4	-0.4	-0.4	-0.4	-0.4	-0.4
	Women	0.3	0.3	0.4	0.3	0.3	0.3
Contribution of group to the average offer rate	Men	0.606	0.606	0.605	0.611	0.613	0.607
	Women	0.683	0.684	0.691	0.693	0.694	0.699

### P.5 18 year old offer rate by sex

Note: The line for a group is not plotted when that group made fewer than 10 applications in any of the years from 2010-2015.

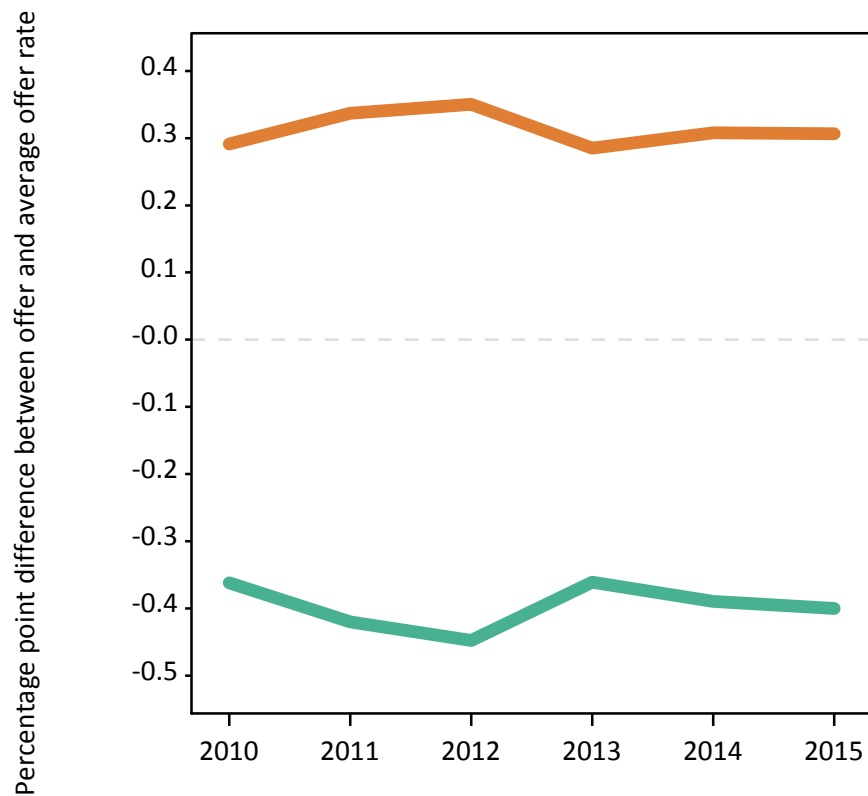
Men  
Women



### P.6 Percentage point difference between 18 year old offer rate and average offer rate by sex

Note: The line for a group is not plotted when that group made fewer than 50 applications in any of the years from 2010-2015.

Men  
Women



## P.7 18 year old applicants by POLAR3 quintile

Statistic	POLAR3 quintile	2010	2011	2012	2013	2014	2015
June deadline applicants	Quintile 1	27,180	27,210	26,160	26,785	28,850	29,935
	Quintile 2	39,455	39,870	38,225	39,020	40,725	42,580
	Quintile 3	50,970	50,550	49,135	49,820	51,215	53,250
	Quintile 4	64,195	63,495	60,715	61,220	61,690	64,295
	Quintile 5	85,975	85,740	82,675	82,100	82,980	85,130
Placed June deadline applicants	Quintile 1	18,355	18,340	18,255	19,315	20,940	21,705
	Quintile 2	27,075	27,515	26,825	28,635	29,720	31,080
	Quintile 3	35,190	35,150	34,370	36,350	37,025	38,760
	Quintile 4	45,600	45,300	43,560	45,310	45,285	47,735
	Quintile 5	62,495	63,050	60,785	62,065	61,900	64,195
All placed applicants	Quintile 1	20,580	21,040	21,070	22,145	24,060	25,100
	Quintile 2	30,600	31,645	31,110	32,775	34,235	35,920
	Quintile 3	40,180	40,900	40,160	42,000	43,095	45,410
	Quintile 4	51,345	51,940	50,105	51,845	52,040	54,870
	Quintile 5	69,940	71,685	69,235	70,165	70,695	73,440
June deadline applicants per 10,000 population	Quintile 1	1,836.2	1,893.0	1,836.2	1,921.8	2,073.5	2,136.5
	Quintile 2	2,565.8	2,651.9	2,549.4	2,648.2	2,783.4	2,866.9
	Quintile 3	3,205.2	3,285.1	3,181.9	3,266.6	3,403.2	3,467.9
	Quintile 4	4,031.1	4,053.7	3,826.1	3,914.4	4,002.9	4,107.4
	Quintile 5	5,072.8	5,179.9	4,921.0	4,965.2	5,088.0	5,085.1
Placed June deadline applicants per 10,000 population	Quintile 1	1,240.1	1,275.9	1,281.3	1,385.8	1,504.9	1,549.2
	Quintile 2	1,760.8	1,830.4	1,789.3	1,943.2	2,031.2	2,092.6
	Quintile 3	2,213.0	2,284.2	2,225.8	2,383.6	2,460.1	2,524.3
	Quintile 4	2,863.4	2,892.0	2,745.2	2,897.1	2,938.5	3,049.3
	Quintile 5	3,687.4	3,809.1	3,618.2	3,753.4	3,795.4	3,834.6
All placed applicants per 10,000 population	Quintile 1	1,390.5	1,463.8	1,478.9	1,589.0	1,729.2	1,791.4
	Quintile 2	1,990.0	2,104.9	2,074.8	2,224.3	2,339.7	2,418.5
	Quintile 3	2,526.7	2,658.1	2,600.5	2,753.8	2,863.5	2,957.3
	Quintile 4	3,224.2	3,316.1	3,157.5	3,314.9	3,376.8	3,505.1
	Quintile 5	4,126.7	4,330.9	4,121.0	4,243.4	4,334.7	4,387.0

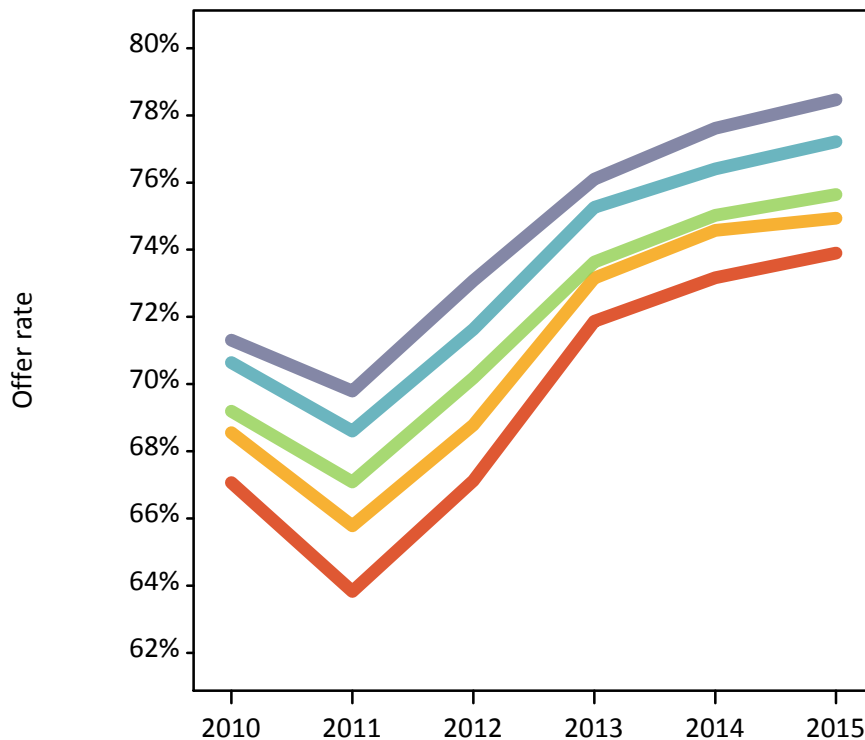
## P.8 18 year old applications by POLAR3 quintile

Statistic	POLAR3 quintile	2010	2011	2012	2013	2014	2015
June deadline applications	Quintile 1	120,140	123,515	118,430	120,115	130,955	136,235
	Quintile 2	178,690	184,075	176,260	179,485	187,980	196,730
	Quintile 3	235,025	236,690	229,235	232,035	239,700	249,400
	Quintile 4	299,010	300,135	285,395	287,530	290,190	302,785
	Quintile 5	406,375	409,850	393,815	390,435	395,780	406,215
Offers	Quintile 1	80,570	78,840	79,490	86,330	95,815	100,680
	Quintile 2	122,490	121,080	121,240	131,300	140,190	147,435
	Quintile 3	162,630	158,780	160,885	170,855	179,830	188,645
	Quintile 4	211,225	205,905	204,445	216,400	221,725	233,810
	Quintile 5	289,790	286,050	287,790	297,140	307,210	318,750
Offer rate	Quintile 1	67.1%	63.8%	67.1%	71.9%	73.2%	73.9%
	Quintile 2	68.5%	65.8%	68.8%	73.2%	74.6%	74.9%
	Quintile 3	69.2%	67.1%	70.2%	73.6%	75.0%	75.6%
	Quintile 4	70.6%	68.6%	71.6%	75.3%	76.4%	77.2%
	Quintile 5	71.3%	69.8%	73.1%	76.1%	77.6%	78.5%
Average offer rate	Quintile 1	68.3%	65.3%	68.3%	73.0%	74.2%	75.0%
	Quintile 2	69.4%	66.5%	69.4%	73.6%	74.9%	75.4%
	Quintile 3	69.6%	67.6%	70.6%	74.0%	75.3%	76.0%
	Quintile 4	70.5%	68.5%	71.6%	75.1%	76.3%	77.2%
	Quintile 5	70.4%	68.9%	72.2%	75.5%	77.0%	77.7%
Percentage point difference between offer rate and average offer rate	Quintile 1	-1.2	-1.5	-1.2	-1.1	-1.0	-1.1
	Quintile 2	-0.9	-0.7	-0.6	-0.4	-0.3	-0.5
	Quintile 3	-0.4	-0.5	-0.4	-0.4	-0.3	-0.4
	Quintile 4	0.1	0.1	0.1	0.2	0.1	0.1
	Quintile 5	0.9	0.9	0.8	0.6	0.6	0.8
Contribution of group to the average offer rate	Quintile 1	0.209	0.209	0.210	0.211	0.214	0.211
	Quintile 2	0.233	0.234	0.236	0.237	0.236	0.236
	Quintile 3	0.262	0.260	0.263	0.263	0.262	0.262
	Quintile 4	0.303	0.301	0.300	0.299	0.294	0.294
	Quintile 5	0.420	0.419	0.421	0.419	0.414	0.410

### P.9 18 year old offer rate by POLAR3 quintile

Note: The line for a group is not plotted when that group made fewer than 10 applications in any of the years from 2010-2015.

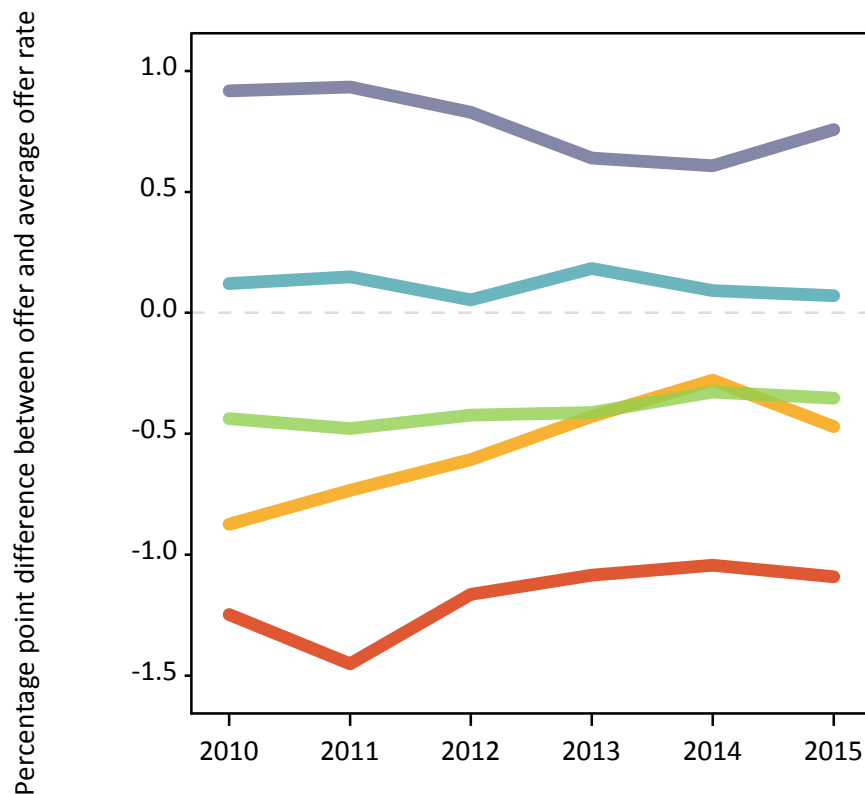
- Quintile 1
- Quintile 2
- Quintile 3
- Quintile 4
- Quintile 5



### P.10 Percentage point difference between 18 year old offer rate and average offer rate by POLAR3 quintile

Note: The line for a group is not plotted when that group made fewer than 50 applications in any of the years from 2010-2015.

- Quintile 1
- Quintile 2
- Quintile 3
- Quintile 4
- Quintile 5



## P.11 18 year old applicants by ethnic group

Statistic	Ethnic group	2010	2011	2012	2013	2014	2015
June deadline applicants	Asian	24,210	25,220	25,090	26,100	27,720	29,690
	Black	9,355	10,225	10,290	11,600	12,295	13,425
	Mixed	8,125	8,885	8,680	9,150	9,830	10,950
	White	223,025	219,360	209,440	208,625	211,785	216,690
	Other	2,120	2,320	2,680	2,800	3,240	3,530
Placed June deadline applicants	Asian	15,200	15,635	15,520	17,255	18,085	19,740
	Black	5,435	5,960	6,190	7,390	7,720	8,625
	Mixed	5,535	6,115	6,045	6,555	7,125	8,010
	White	160,545	159,595	153,865	158,190	159,495	164,105
	Other	1,340	1,450	1,660	1,805	2,050	2,330
All placed applicants	Asian	19,540	20,730	20,790	22,330	23,760	25,880
	Black	7,480	8,530	8,760	10,095	10,695	11,860
	Mixed	6,370	7,295	7,140	7,680	8,375	9,475
	White	176,530	177,910	171,965	175,695	177,875	183,535
	Other	1,735	1,935	2,235	2,360	2,740	3,090
June deadline applicants per 10,000 population	Asian	3,915.9	4,001.4	3,874.0	3,957.1	4,087.7	4,195.9
	Black	3,574.5	3,740.0	3,654.5	3,906.9	4,056.9	4,219.6
	Mixed	3,507.8	3,668.4	3,333.2	3,384.9	3,417.4	3,551.5
	White	3,325.4	3,388.2	3,243.7	3,315.6	3,432.7	3,477.6
	Other	2,754.9	2,861.8	3,027.6	3,090.1	3,482.1	3,663.5
Placed June deadline applicants per 10,000 population	Asian	2,458.7	2,481.0	2,396.5	2,616.0	2,667.2	2,790.0
	Black	2,076.3	2,179.2	2,198.9	2,488.8	2,547.2	2,710.5
	Mixed	2,388.6	2,523.9	2,320.1	2,423.6	2,476.8	2,597.5
	White	2,393.8	2,465.1	2,382.9	2,514.0	2,585.2	2,633.7
	Other	1,740.5	1,791.4	1,876.0	1,989.5	2,204.6	2,420.5
All placed applicants per 10,000 population	Asian	3,161.0	3,289.2	3,210.3	3,385.6	3,503.7	3,657.2
	Black	2,857.1	3,120.0	3,111.2	3,400.6	3,527.7	3,727.5
	Mixed	2,749.9	3,011.5	2,741.2	2,839.7	2,911.3	3,073.7
	White	2,632.2	2,747.9	2,663.2	2,792.2	2,883.1	2,945.5
	Other	2,256.1	2,390.2	2,525.8	2,600.4	2,942.7	3,206.6



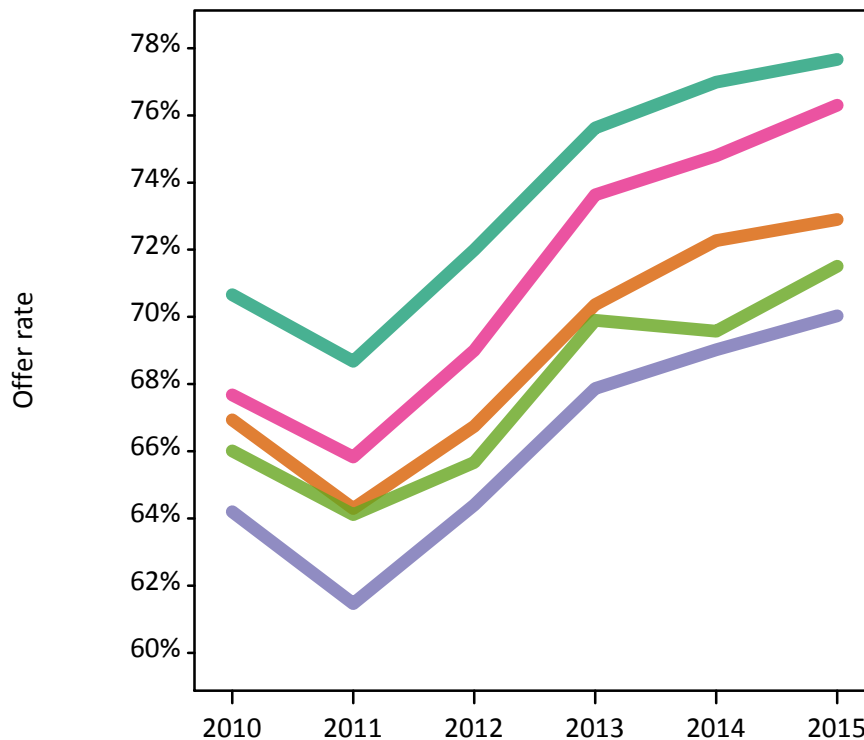
## P.12 18 year old applications by ethnic group

Statistic	Ethnic group	2010	2011	2012	2013	2014	2015
June deadline applications	Asian	116,890	122,595	121,670	126,320	134,470	144,005
	Black	45,465	50,060	50,400	56,690	60,130	65,775
	Mixed	38,365	42,535	41,305	43,490	46,760	52,165
	White	1,023,810	1,023,695	973,360	966,355	984,685	1,007,970
	Other	10,270	11,255	12,970	13,545	15,750	17,090
Offers	Asian	78,240	78,825	81,205	88,885	97,180	104,975
	Black	29,190	30,765	32,455	38,475	41,505	46,065
	Mixed	25,965	28,000	28,500	32,025	34,975	39,800
	White	723,420	703,045	700,750	730,810	758,110	782,875
	Other	6,780	7,215	8,520	9,470	10,960	12,220
Offer rate	Asian	66.9%	64.3%	66.7%	70.4%	72.3%	72.9%
	Black	64.2%	61.5%	64.4%	67.9%	69.0%	70.0%
	Mixed	67.7%	65.8%	69.0%	73.6%	74.8%	76.3%
	White	70.7%	68.7%	72.0%	75.6%	77.0%	77.7%
	Other	66.0%	64.1%	65.7%	69.9%	69.6%	71.5%
Average offer rate	Asian	68.0%	65.8%	68.2%	71.6%	73.3%	74.1%
	Black	66.9%	64.4%	67.8%	70.8%	71.9%	72.6%
	Mixed	68.0%	66.5%	69.5%	73.9%	75.3%	76.5%
	White	70.4%	68.3%	71.6%	75.3%	76.6%	77.3%
	Other	67.1%	66.1%	68.3%	71.5%	72.0%	73.4%
Percentage point difference between offer rate and average offer rate	Asian	-1.1	-1.5	-1.4	-1.2	-1.1	-1.2
	Black	-2.7	-2.9	-3.4	-2.9	-2.9	-2.6
	Mixed	-0.3	-0.6	-0.5	-0.3	-0.5	-0.2
	White	0.3	0.4	0.4	0.4	0.4	0.4
	Other	-1.1	-2.0	-2.6	-1.6	-2.4	-1.9
Contribution of group to the average offer rate	Asian	0.325	0.316	0.314	0.310	0.303	0.303
	Black	0.185	0.188	0.188	0.194	0.188	0.183
	Mixed	0.113	0.118	0.119	0.118	0.117	0.119
	White	0.874	0.866	0.860	0.853	0.845	0.836
	Other	0.111	0.106	0.121	0.115	0.117	0.112

### P.13 18 year old offer rate by ethnic group

Note: The line for a group is not plotted when that group made fewer than 10 applications in any of the years from 2010-2015.

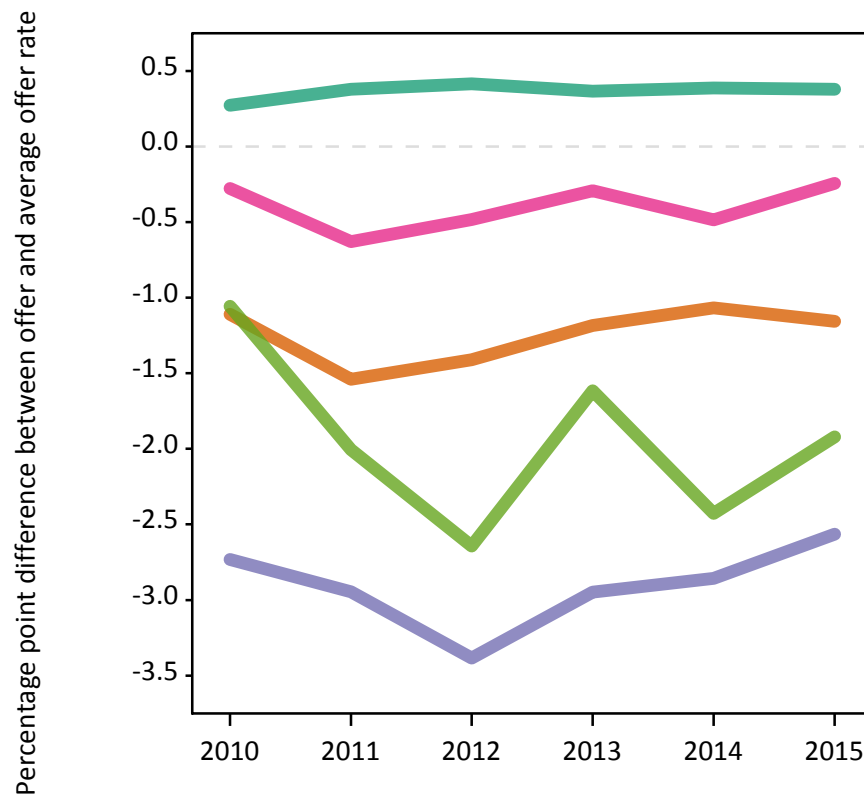
- Asian
- Black
- Mixed
- White
- Other



### P.14 Percentage point difference between 18 year old offer rate and average offer rate by ethnic group

Note: The line for a group is not plotted when that group made fewer than 50 applications in any of the years from 2010-2015.

- Asian
- Black
- Mixed
- White
- Other



### P.15 Applicants (all ages)

Statistic	2010	2011	2012	2013	2014	2015
June deadline applicants	559,005	563,685	513,565	527,320	544,220	553,230
Placed June deadline applicants	362,560	365,020	335,185	359,300	368,950	379,520
All placed applicants	423,295	429,875	406,030	433,400	447,205	463,405

### P.16 Applications (all ages)

Statistic	2010	2011	2012	2013	2014	2015
June deadline applications	2,304,965	2,399,705	2,191,665	2,241,075	2,322,760	2,365,095
Offers	1,365,365	1,364,880	1,314,280	1,424,555	1,500,875	1,557,525
Offer rate	59.2%	56.9%	60.0%	63.6%	64.6%	65.9%

### P.17 Applicants (all ages) by sex

Statistic	Sex	2010	2011	2012	2013	2014	2015
June deadline applicants	Men	238,810	241,865	217,590	224,505	230,300	232,630
	Women	320,190	321,820	295,980	302,815	313,925	320,600
Placed June deadline applicants	Men	159,965	162,730	147,545	159,050	161,515	164,240
	Women	202,600	202,290	187,635	200,250	207,435	215,280
All placed applicants	Men	188,460	192,385	180,350	192,955	197,320	201,835
	Women	234,835	237,490	225,680	240,445	249,885	261,570

### P.18 Applications (all ages) by sex

Statistic	Sex	2010	2011	2012	2013	2014	2015
June deadline applications	Men	1,013,330	1,053,810	947,795	971,840	1,002,410	1,012,715
	Women	1,291,635	1,345,895	1,243,870	1,269,235	1,320,345	1,352,380
Offers	Men	643,530	645,345	613,955	668,800	699,350	714,555
	Women	721,835	719,530	700,325	755,755	801,525	842,970
Offer rate	Men	63.5%	61.2%	64.8%	68.8%	69.8%	70.6%
	Women	55.9%	53.5%	56.3%	59.5%	60.7%	62.3%

### P.19 Applicants (all ages) by POLAR3 quintile

Statistic	POLAR3 quintile	2010	2011	2012	2013	2014	2015
June deadline applicants	Quintile 1	68,610	70,355	65,065	67,265	71,495	71,615
	Quintile 2	90,475	92,055	84,130	86,840	91,165	92,355
	Quintile 3	112,525	113,730	103,705	106,605	110,305	111,745
	Quintile 4	128,195	128,065	115,935	119,250	121,625	124,105
	Quintile 5	157,440	157,890	143,310	146,130	148,400	151,770
Placed June deadline applicants	Quintile 1	41,865	42,725	40,625	44,235	47,280	47,715
	Quintile 2	56,665	57,905	53,410	58,190	60,860	62,235
	Quintile 3	70,810	71,190	65,490	70,725	72,875	74,840
	Quintile 4	84,380	83,950	76,500	81,970	83,015	85,750
	Quintile 5	107,800	108,305	98,370	103,450	104,205	107,955
All placed applicants	Quintile 1	48,760	50,235	49,415	53,455	57,270	58,430
	Quintile 2	66,550	68,125	65,270	70,425	73,965	76,210
	Quintile 3	84,010	85,550	81,240	87,380	90,675	94,030
	Quintile 4	98,370	98,890	92,400	98,705	100,435	104,395
	Quintile 5	124,245	125,895	116,490	122,295	123,835	128,795

### P.20 Applications (all ages) by POLAR3 quintile

Statistic	POLAR3 quintile	2010	2011	2012	2013	2014	2015
June deadline applications	Quintile 1	260,100	280,615	260,410	265,995	286,095	288,695
	Quintile 2	357,620	378,695	348,135	357,625	377,480	383,760
	Quintile 3	462,200	481,995	441,675	452,350	469,865	476,915
	Quintile 4	536,660	551,795	500,115	513,865	524,695	536,075
	Quintile 5	681,160	699,815	635,240	645,980	659,420	672,695
Offers	Quintile 1	142,775	144,595	141,785	156,900	172,765	178,055
	Quintile 2	203,895	205,820	198,290	219,200	235,225	243,855
	Quintile 3	265,075	264,195	256,430	278,625	294,810	305,280
	Quintile 4	324,275	320,950	306,180	333,070	344,410	358,930
	Quintile 5	425,635	425,945	408,455	433,870	450,645	467,340
Offer rate	Quintile 1	54.9%	51.5%	54.4%	59.0%	60.4%	61.7%
	Quintile 2	57.0%	54.3%	57.0%	61.3%	62.3%	63.5%
	Quintile 3	57.4%	54.8%	58.1%	61.6%	62.7%	64.0%
	Quintile 4	60.4%	58.2%	61.2%	64.8%	65.6%	67.0%
	Quintile 5	62.5%	60.9%	64.3%	67.2%	68.3%	69.5%

## P.21 Applicants (all ages) by ethnic group

Statistic	Ethnic group	2010	2011	2012	2013	2014	2015
June deadline applicants	Asian	52,990	56,110	52,945	54,725	57,710	60,465
	Black	41,620	44,460	42,215	42,130	44,260	45,470
	Mixed	18,960	20,095	18,430	19,465	21,105	22,500
	White	435,120	432,450	389,135	400,035	409,420	411,565
	Other	5,945	6,285	7,310	7,405	8,195	8,695
Placed June deadline applicants	Asian	30,360	31,820	30,250	33,405	34,780	37,160
	Black	19,275	20,345	19,950	21,455	22,380	23,625
	Mixed	11,890	12,790	11,855	13,075	14,075	15,410
	White	295,190	294,115	267,005	284,965	290,980	295,345
	Other	3,200	3,410	4,040	4,225	4,695	5,170
All placed applicants	Asian	40,705	43,170	42,515	45,640	48,380	51,755
	Black	27,155	29,675	30,790	32,480	35,990	37,435
	Mixed	14,170	15,475	14,800	16,235	17,695	19,320
	White	330,240	331,955	307,325	327,460	333,005	341,005
	Other	4,405	4,700	5,895	6,190	6,980	7,715

## P.22 Applications (all ages) by ethnic group

Statistic	Ethnic group	2010	2011	2012	2013	2014	2015
June deadline applications	Asian	238,395	257,000	243,070	251,130	265,400	277,515
	Black	179,295	197,020	188,110	188,180	197,240	202,715
	Mixed	81,115	88,620	80,970	85,515	92,575	99,225
	White	1,762,160	1,810,950	1,631,750	1,667,845	1,715,905	1,727,335
	Other	26,040	27,970	32,805	33,280	36,990	39,230
Offers	Asian	137,225	141,190	140,680	154,725	167,055	177,980
	Black	72,025	73,410	75,255	83,535	89,840	96,480
	Mixed	45,340	48,455	47,270	53,395	58,780	65,095
	White	1,087,680	1,078,325	1,025,510	1,105,285	1,155,595	1,183,270
	Other	13,595	14,225	17,610	19,250	21,605	23,485
Offer rate	Asian	57.6%	54.9%	57.9%	61.6%	62.9%	64.1%
	Black	40.2%	37.3%	40.0%	44.4%	45.5%	47.6%
	Mixed	55.9%	54.7%	58.4%	62.4%	63.5%	65.6%
	White	61.7%	59.5%	62.8%	66.3%	67.3%	68.5%
	Other	52.2%	50.9%	53.7%	57.9%	58.4%	59.9%

## Technical Notes and Definitions

### UCAS undergraduate scheme

#### Adjustment

Adjustment allows applicants who have met and exceeded the terms of their conditional firm offer to seek and find a place at another provider whilst keeping their place at their original firm choice provider.

#### Clearing

Clearing is a route for applicants that are not placed and holding no offers to find a place on courses with vacancies.

#### Cycle year

The UCAS application cycle which runs from September to October the following year. For example the 2015 cycle runs from September 2014 through to October 2015.

#### End of cycle

The point in the cycle to which the numbers in this report refer, and the point at which the cycle is closed such that no more applications or offers can be made, and no more applicants can be placed. Numbers reported at the end of cycle exclude information on a small number of applicants who cancelled during the cycle.

#### Extra

Applicants who are unsuccessful in obtaining an offer or decline all offers may be eligible to apply through Extra, where they can apply to one further course at a time. Extra operates from 25 February until early July. It provides applicants who are eligible the possibility of obtaining an offer before exam results are published and Clearing starts.

#### June 30 deadline

The deadline for main scheme applications. Applicants who apply after this date will go directly into Clearing.

#### Record of Prior Acceptance (RPA)

RPA is an acceptance route used when a provider informs UCAS of applicants it has accepted outside of the normal application process (e.g. individuals who have applied directly to the provider).

### Reporting groups

#### Ethnic group

High level grouping of ethnic origin as declared by the applicant: 'White', 'Black', 'Asian', 'Mixed', 'Other', 'Unknown'. Applicants who declare themselves as 'Unknown' ethnic origin are not reported in these tables, but are included in the associated csv data file.

#### POLAR3 quintile

Developed by HEFCE, POLAR3 classifies small areas across the UK into five groups according to their level of young participation in Higher Education. Each of these groups represents around 20 per cent of young people and is ranked from Quintile 1 (areas with the lowest young participation rates, considered as the most disadvantaged) to Quintile 5 (highest young participation rates, considered most advantaged). POLAR3 is based on the participation rates of young people between 2005 and 2009 who entered Higher Education between 2005-06 and 2010-11, therefore is most suitable for applicants aged 19 and under. These groups are assigned using the postcode declared by the applicant at the time of their application. If a UK postcode is invalid, considered unsafe for measurement or there is no link to Census geography possible then the applicant is not assigned to a quintile. Applicants with no POLAR3 quintile are not reported.

#### Sex

Sex as declared by the applicant.

### **SIMD quintile**

Scottish index of multiple deprivation (SIMD) for 2012 identifies small area concentrations of multiple deprivation across all of Scotland, providing a relative measure of deprivation amongst 6505 small areas (data zones) based on 7 socio-economic domains. These small areas are classified into five groups ranked from Quintile 1 (considered the most deprived) to Quintile 5 (considered least deprived), with equal populations in each quintile. Quintiles are assigned using the postcode declared by the applicant, applicants declaring invalid postcodes are classified as 'Not assigned' and are not reported.

SIMD is only defined for applicants domiciled in Scotland, therefore any applicants domiciled outside of Scotland cannot be assigned to an SIMD quintile and so are not reported for this measure.

SIMD is only reported for providers in Scotland. Application and entry rates by SIMD are reported in the 2015 End of Cycle Report and the 2016 cycle January deadline application rate report.

### **Statistics reported in the tables**

#### **All placed applicants**

The number of applicants placed for entry into higher education at the provider through one of their choices, including any choices made through Extra, or via Adjustment, Clearing or RPA.

#### **All placed applicants per 10,000 population**

The number of total UK domiciled 18 year old placed applicants for entry into higher education at the provider divided by the number of UK 18 year olds in the population, multiplied by 10,000. This gives the number of 18 year olds, for every 10,000 in the population, that were placed at the provider through one of their choices, including any choices made through Extra, or via Adjustment, Clearing or RPA. It is an alternative way of expressing the entry rate to a provider. By referencing the underlying population this statistic shows how the number of placed applicants is changing in relation to the available pool of potential applicants and so gives the chance that somebody from the group will be placed at a provider.

This statistic is only reported for 18 year olds.

#### **Average offer rate**

The offer rate that you might expect if the predicted grades and subject choice of applicants were the only factors that influenced whether an applicant was made an offer by the provider. The average offer rate is calculated by dividing applicants according to their specific combination of grades (for A levels the best three predicted grades are used, for BTECs, International Baccalaureate and Scottish Highers and Advanced Highers, predicted grades along with any grades already achieved upon applying are used) and subject choice. For each combination the number of main scheme offers is divided by the number of main scheme applications, to give an overall offer rate. This is then multiplied by the number of applications made by the group for which the average offer rate is being calculated (for example POLAR3 quintile 1), to give an average number of offers for that group. These average number of offers are then added together across all combinations of predicted grade and subject and divided by the number of main scheme applications from the group to give the average offer rate.

The average offer rate does not attempt to control for any other factors that may play a part in the decision to make an offer, such as the subject of the qualifications studied, their relevance to a course, or the grade in each subject; higher numbers of A levels being studied; the exact profile of grades predicted; personal statements; teacher references; interviews; or any other criteria (such as work experience or portfolios) that may be part of the admissions decision.

This statistic is only reported for 18 year olds.



### Contribution of group to the average offer rate

The way in which the average offer rate is defined means that the pattern of application and offers of a group (for example POLAR3 quintile 1) will always contribute, in part, to the average offer rate for that group. When this contribution is large, the average offer rate will mainly reflect the patterns for the group, meaning that the value of the average offer rate will be similar to the offer rate, the percentage point difference statistic will be small, and any real difference between the offer rate and what might be expected given the predicted grades and subject choices of the applicants will be difficult to detect.

Values of the contribution of group to the average offer rate range between 0 and 1. The closer the value is to 1 the greater the contribution a group makes to its own average offer rate.

This statistic is only reported for 18 year olds.

### Placed June deadline applicants

An applicant who has been placed for entry into higher education at the provider through a June deadline application.

### Placed June deadline applicants per 10,000 population

The number of UK domiciled 18 year old placed June deadline applicants at the provider divided by the number of UK 18 year olds in the population, multiplied by 10,000. This gives the number of 18 year olds, for every 10,000 in the population, that were placed at the provider through one of their June deadline applications. It is an alternative way of expressing the entry rate to a provider, but for placed June deadline applicants only. By referencing the underlying population this statistic shows how the number of placed June deadline applicants is changing in relation to the available pool of potential 18 year old applicants and so gives the chance that somebody from the group will be placed at a provider through a June deadline application.

This statistic is only reported for 18 year olds.

### June deadline applications

An application (or choice) to a course in higher education to the provider that is made by the June 30 deadline. Each applicant can make up to five choices this way. The number of June deadline applications does not include choices made through the following routes: Clearing, Extra, Adjustment and RPAs. Applications made to October deadline courses received after the October deadline are not included in these statistics.

### June deadline applicants

The number of applicants that made at least one application to the provider by the June 30 deadline.

### June deadline applicants per 10,000 population

The number of UK domiciled 18 year old June deadline applicants to the provider divided by the number of UK 18 year olds in the population, multiplied by 10,000. This gives the number of 18 year olds, for every 10,000 in the population, who applied by the June 30 deadline. It is equivalent to the application rate. By referencing the underlying population this statistic shows how the number of June deadline applicants is changing in relation to the available pool of potential 18 year old applicants and so gives the chance that somebody from the group will apply to a provider by the June 30 deadline.

This statistic is only reported for 18 year olds.

### Offers

An offer is defined as a provider's decision in response to an application to offer a place to an applicant, often subject to the applicant satisfying academic and/or other criteria, via a June deadline application (i.e. does not cover choices made through the following routes: Clearing, Extra, Adjustment and RPAs).

### Offer rate

The number of offers made divided by the number of June deadline applications. This gives the proportion of all June deadline applications to the provider that received an offer.

### Percentage point difference between offer rate and average offer rate

The offer rate minus the average offer rate.

The percentage point difference can be compared to the expected range of statistical variation resulting from the calculation of the average offer rate using the Average Offer Rate Lookup Table. Where the value of the percentage point difference lies outside of this range, the percentage point difference may be considered to represent a real difference between the offer rate and the average offer rate.

### Other definitions

#### Age

This analysis uses country-specific age definitions that align with the cut off points for school and college cohorts within the different administrations of the UK. For England and Wales, ages are defined on the 31 August, for Northern Ireland on the 1 July and for Scotland on the 28 February the following year. Defining ages in this way matches the assignment of children to school cohorts. For applicants outside of the UK a cohort cut off of 31 August has been used.

#### Provider

A higher education provider - a university or college.

#### UK domiciled

Declared area of permanent residence within England, Northern Ireland, Scotland and Wales. Applicants from the Channel Islands and Isle of Man are not included.